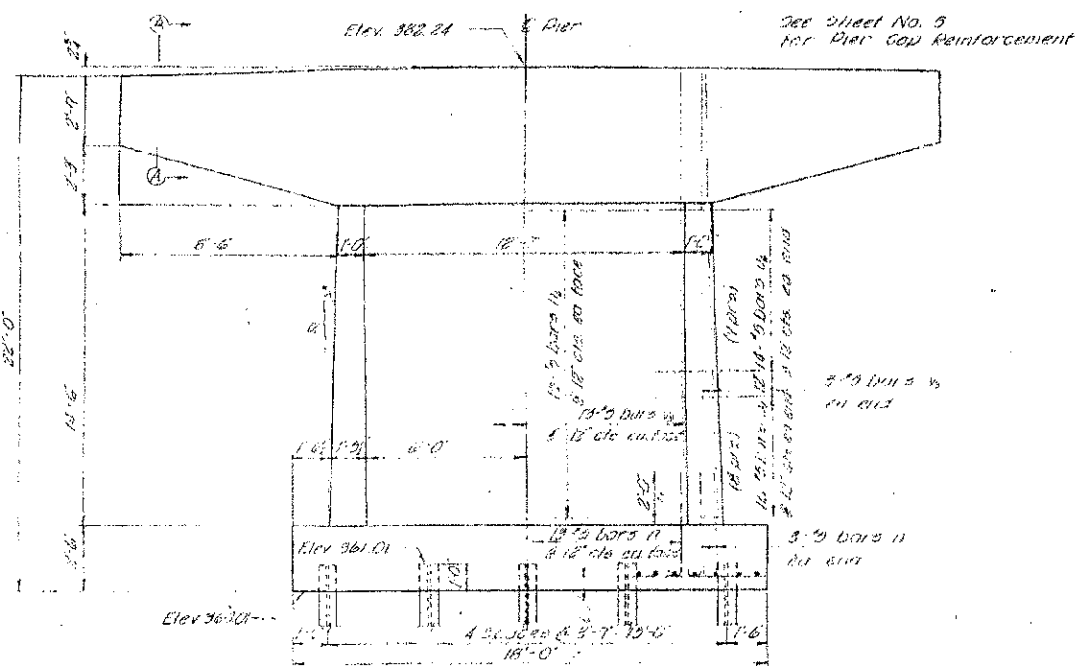
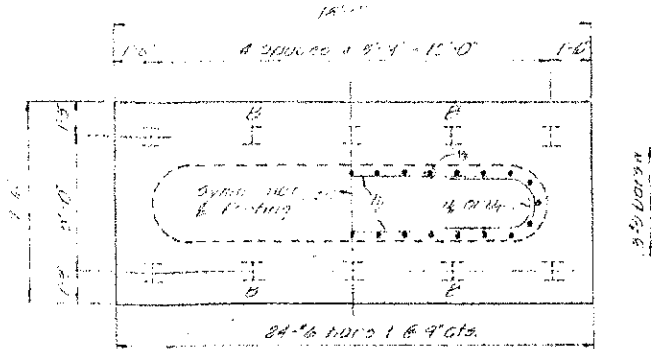


TOP PLAN

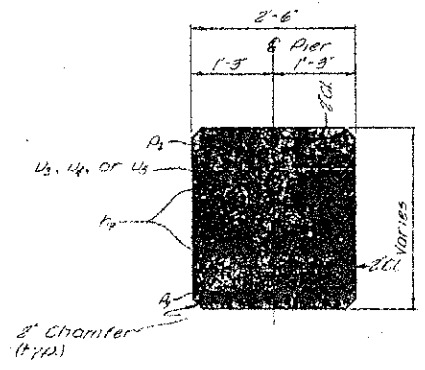


ELEVATION

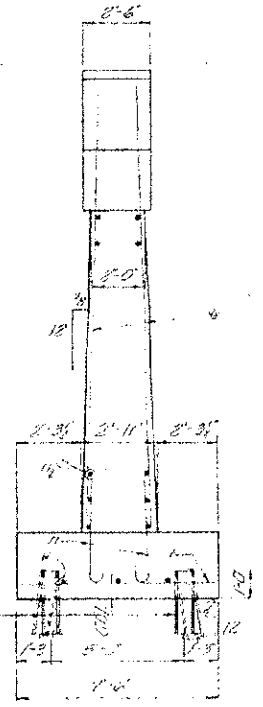


FOOTING PLAN

Note: Piles marked B to be Batteres 2/11.



SECTION A-A



END VIEW

PILE DATA

Type: Steel (A.P.P.)
 No. Required: 18
 Est. Length: 12 ft.
 Piles shall be driven to refusal.
 *Includes one test pile to be driven in Pier #4.

BILL OF MATERIAL - PIER 4

BAR	NO.	SIZE	LENGTH	SHAPE	
1	20	#5	18'-0"	---	
2	4	#5	50'-8"	---	
3	21	#5	47'-0"	---	
4	3	#11	34'-3"	C-5	
5	4	#5	10'-0"	---	
6	24	#6	78'-0"	---	
7	6	#6	71'-0"	---	
8	16	#4	78'-0"	---	
9	16	#4	68'-0"	---	
10	28	#5	37'-0"	---	
11	32	#5	37'-0"	---	
12	32	#5	14'-3"	---	
13	8	#5	17'-0"	---	
Concrete				cu. yds	441
Reinforcement Bars				lbs	3200
Formwork (B.P.P.)				sq. ft.	111
Excavation (Total)				each	1
Excavation				cu. yds	96

See End Details See Sheet # of 7
 10 16

PIER 4
 CRAB ORCHARD CREEK BRIDGE
 SECTION 104B-TR CARBONDALE RD. DIST.
 JACKSON COUNTY
 STATION 152 + 54

REVISIONS: REC, 8-20-66, 416