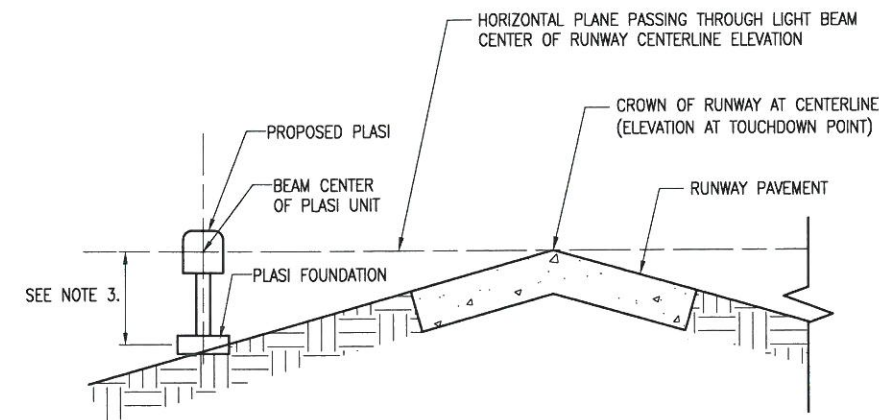


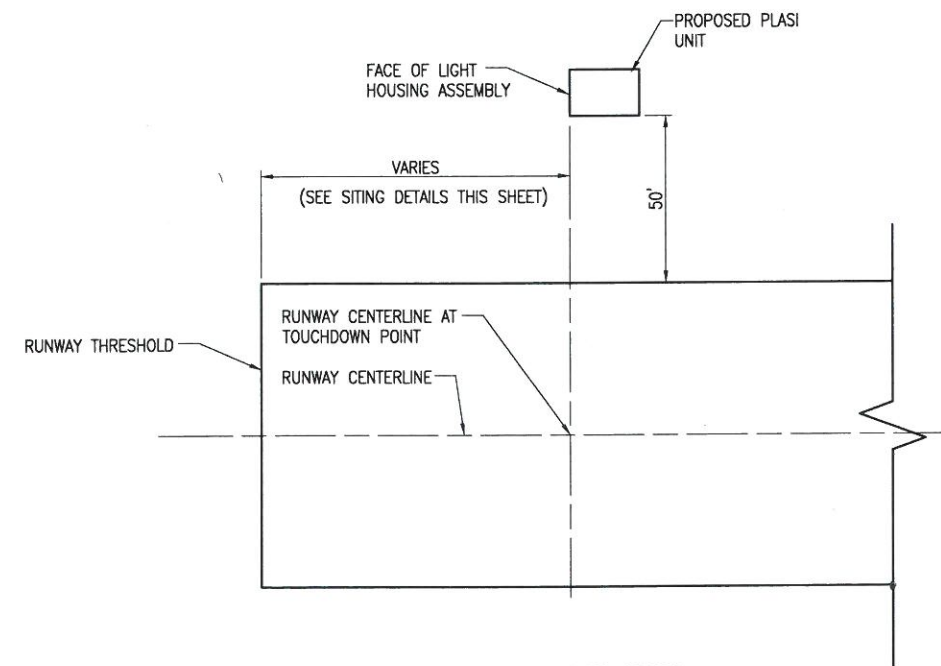
**P.L.A.S.I. AIMING DIAGRAM RUNWAY 9 END**  
NOT TO SCALE



**TYPICAL P.L.A.S.I. ELEVATION DETAIL**  
NOT TO SCALE

**NOTES:**

1. REFER TO PLASI AIMING DIAGRAM FOR LOCATION AND ORIENTATION INFORMATION FOR PROPOSED PLASI UNIT.
2. AFTER INSTALLATION OF PLASI, CONTRACTOR SHALL PROVIDE THE HEIGHT OF THE PLASI LIGHT HOUSING ASSEMBLY (BETWEEN CONCRETE PAD AND BOTTOM OF LHA) FOR AS-BUILT RECORDS.
3. REFER TO PLASI AIMING DIAGRAM FOR MOUNTING HEIGHTS OF EACH RESPECTIVE PLASI UNIT. MOUNTING HEIGHT SHALL BE MEASURED FROM THE CONCRETE PAD TO BEAM CENTERLINE OF PLASI UNIT. PLASI MOUNTING HEIGHT SHALL MATCH CENTER OF PROPOSED PLASI LIGHT HOUSING ASSEMBLY WITH RUNWAY & BEAM ELEVATION UNLESS NOTED OTHERWISE. THE PLASI HORIZONTAL PLANE MUST BE WITHIN 1 FOOT OF THE ELEVATION OF THE RUNWAY CENTERLINE AT THE INTERCEPT POINT OF THE VISUAL GLIDE PATH WITH THE RUNWAY IN ACCORDANCE WITH FAA AC 150/5340-30G, CHAPTER 7, PART 7.5. CONTRACTOR SHALL MEASURE AND RECORD PLASI HEIGHT FOR RECORD DRAWINGS IN PRESENCE OF RESIDENT ENGINEER/RESIDENT PROJECT REPRESENTATIVE.



**P.L.A.S.I. SITE DETAIL**  
NOT TO SCALE

| DATE     | REVISION                    |
|----------|-----------------------------|
| 05/21/13 | REVISED VGPA TO 3.5 DEGREES |

KEWANEE MUNICIPAL AIRPORT  
KEWANEE, ILLINOIS

IL. PROJ.: EZI-4221  
BLOCK GRANT PROJ.: 3-17-0058-B16

|                    |                    |
|--------------------|--------------------|
| Hanson Project No. | 12A0056            |
| Filename           | E-504-ELEC-REV.dwg |
| Scale              | AS SHOWN           |
| Date               | 02/01/13           |
| LAYOUT             | KNL 01/09/13       |
| DRAWN              | TRR 01/09/13       |
| REVIEWED           | CAH 01/16/13       |



REPLACE PLASI'S ON  
RUNWAYS 9 AND 27

PROPOSED RUNWAY 9 PLASI  
SITING DETAILS



5/28/13  
*Charles A. Hagloch*  
EXPIRES 11/30/13

MAY 28, 2013 12:03 PM HAGL003BZ  
p:\s\sp-504-hanson.com\hanson - Project\Documents\12\1056\12A0056\12A0056.dwg (CAD) \Report\Sheet\E-504-ELEC