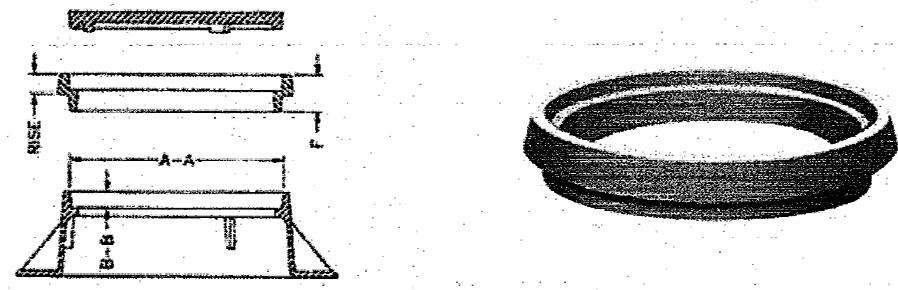
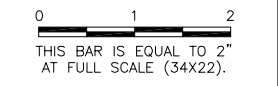


BUTT JOINT DETAIL
N.T.S.

UN052

REVISIONS		
NUMBER	BY	DATE

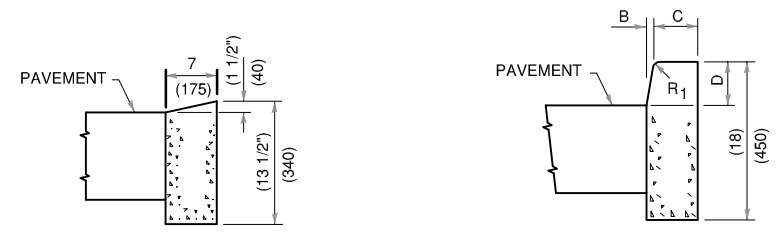


INLET ADJUSTMENT TABLE

STRUCTURE	TYPE GRATE	GRATE SIZE	EXISTING ELEVATION	PROPOSED ELEVATION	NOTES
A-1	ROUND, CLOSED	23"Ø	745.32	745.55	NONE
A-2	ROUND, OPEN	23"Ø	744.74	745.20	NONE
A-3	ROUND, OPEN	23"Ø	744.40	744.90	NONE
A-4	RECTANGULAR, OPEN	26"x 32"	744.10	744.75	SEE NOTE 1
A-5	ROUND, OPEN	33"Ø	744.19	744.44	REMOVE EXISTING "BEEHIVE" GRATE & REPLACE W/NEW NEENAH R-4370 TYPE D GRATE OR APPROVED EQUIVALENT TO MATCH EXISTING GRATES IN PARKING LOT
A-6	ROUND, OPEN	23"Ø	745.08	745.33	NONE
A-7	ROUND, OPEN	23"Ø	746.44	746.44	NO ADJUSTMENT
A-8	ROUND, OPEN	23"Ø	749.06	749.24	SEE NOTE 5

NOTES:

1. THE RECTANGULAR GRATE SHALL BE ADJUSTED USING A RECTANGULAR ADJUSTMENT RING. IF AND ADJUSTMENT IS NOT AVAILABLE IN THIS SIZE/STYLE, THE CONTRACTOR SHALL ADJUST THE INLET TO THE PROPOSED ELEVATION BY PERFORMING AND POURING A CONCRETE ADJUSTMENT COLLAR FOR THE INLET.
2. STRUCTURE A-7 SHALL REMAIN AT ITS EXISTING ELEVATION AND A BUTT JOINT SHALL BE CONSTRUCTED AROUND IT TO TRANSITION THE PROPOSED BITUMINOUS PAVEMENT.
3. ADJUSTMENT RINGS SHALL BE NEENAH R-1779 SERIES OR APPROVED EQUIVALENT.
4. IT SHALL BE THE SOLE RESPONSIBILITY OF THE CONTRACTOR TO VERIFY ALL DIMENSIONS AND ELEVATIONS PRIOR TO ORDERING EACH ADJUSTMENT RING.
5. THE RECTANGULAR GRATE SHALL BE ADJUSTED USING A RECTANGULAR ADJUSTMENT RING. IF AND ADJUSTMENT IS NOT AVAILABLE IN THIS SIZE/STYLE, THE CONTRACTOR SHALL ADJUST THE INLET TO THE PROPOSED ELEVATION BY PERFORMING AND POURING A CONCRETE ADJUSTMENT COLLAR FOR THE INLET. THE CONTRACTOR SHALL FIELD CHECK THE EXISTING INLET AS TO VERIFY DEPTH OF ADJUSTMENT TO ACCOUNT FOR EXISTING BRICK CURRENTLY USED FOR ADJUSTMENT.



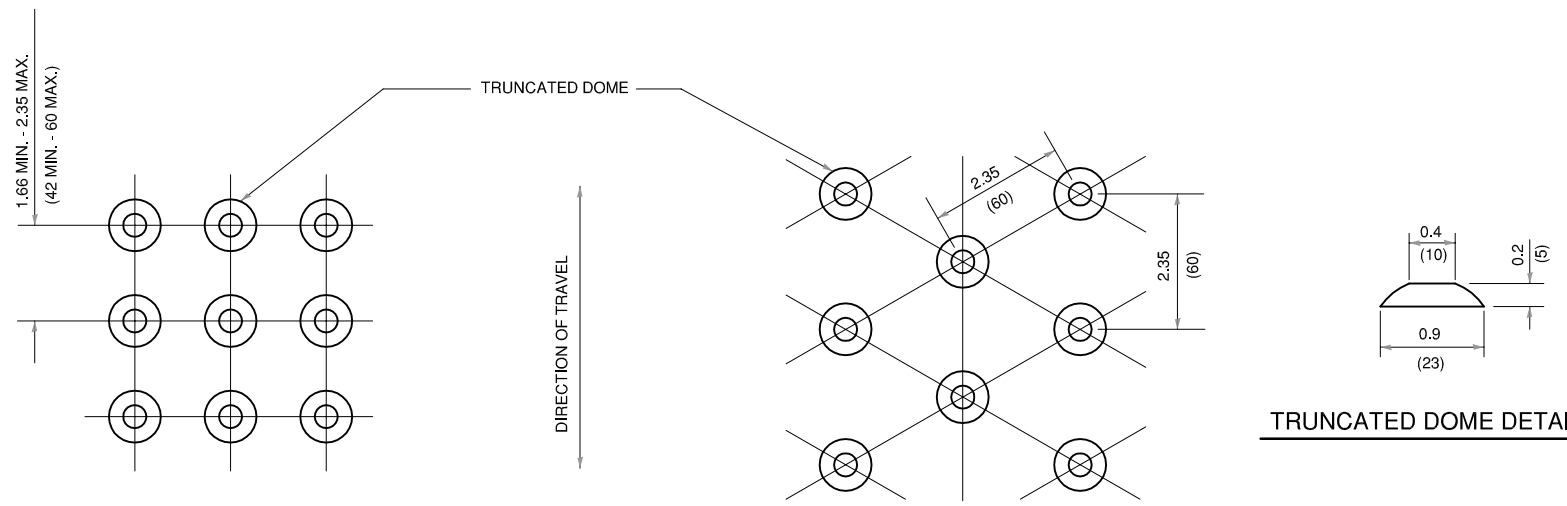
DEPRESSED CURB

BARRIER CURB

ADJACENT TO FLEXIBLE PAVEMENT

CONCRETE CURB TYPE B

TABLE OF DIMENSIONS BARRIER CURB					
TYPE	A	B	C	D	R ₁
B-6.12 (B-15.3)	12 (300)	1 (25)	6 (150)	6 (150)	1 (25)
B-6.18 (B-15.45)	18 (450)	1 (25)	6 (150)	6 (150)	1 (25)
B-6.24 (B-15.60)	24 (600)	1 (25)	6 (150)	6 (150)	1 (25)
B-9.12 (B-22.30)	12 (300)	2 (50)	5 (125)	9 (225)	1 (25)
B-9.18 (B-22.45)	18 (450)	2 (50)	5 (125)	9 (225)	1 (25)
B-9.24 (B-22.60)	24 (600)	2 (50)	5 (125)	9 (225)	1 (25)

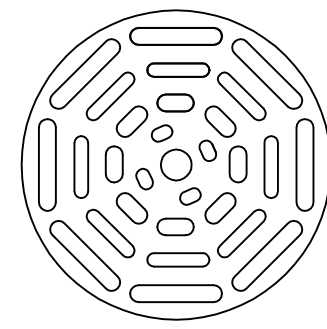


SQUARE PATTERN
(Parallel Alignment)

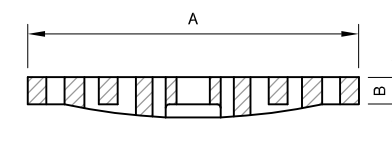
TRIANGULAR PATTERN

DETECTABLE WARNINGS DETAIL

TRUNCATED DOME DETAIL



**SERIES R-4370 ROUND
DRAINAGE GRATE
(OR APPROVED EQUIVALENT)**



CUT ELEVATION VIEW

UNIVERSITY OF ILLINOIS
 WILLARD AIRPORT
 SAVOY, ILLINOIS

RELOCATE ENTRANCE ROADWAY &
 REHABILITATE OLD TERMINAL PARKING LOT
 PAVING & MISCELLANEOUS
 DETAILS

© Copyright CMT, Inc.
CMT
 CRAWFORD, MURPHY & TILLY, INC.
 CONSULTING ENGINEERS
 License No. 184-000613

DESIGN BY:	CBG
DRAWN BY:	CMT
CHECKED BY:	KLB
APPROVED BY:	CET
DATE:	4/19/2013
JOB No:	11059-05-00

IL PROJ. NO. CMI-4269