

INDEX OF SHEETS

SHT NO.	DESCRIPTION
1	COVER SHEET
2	INDEX OF SHEETS, HIGHWAY STANDARDS, AND GENERAL NOTES
3-5	LOCATION MAPS
6-10	SUMMARY OF QUANTITIES
11-17	DISTRICT 1 STANDARD TRAFFIC SIGNAL DESIGN DETAILS (TS-05)
18	DISTRICT 1 MAST ARM MOUNTED STREET NAME SIGNS (TS-02)

SHT NO.	TS NO.	INTERSECTION NAME
19-23	5630	PALATINE RD AT WINDSOR DR
24-28	5620	PALATINE RD AT SCHOENBECK RD
29-33	5625	PALATINE RD AT WHEELING RD
34-38	1285	US RTE 14 AT RAND RD/NORTHWEST HWY
39-42	5830	TOUHY AVE AT DEE RD
43-47	6805	IL RTE 176 (ROCKLAND RD) AT IL RTE 43 (WAUKEGAN RD)
48-51	7020	IL RTE 176 (ROCKLAND RD) AT IL RTE 131 (GREEN BAY RD)
52-55	755	IL RTE 38 (STATE ST) AT IL RTE 25 (BENNETT ST) LOCATION REMOVED

SHT NO.	DESCRIPTION
56	TRAFFIC CONTROL AND PROTECTION FOR SIDE ROADS, INTERSECTIONS, AND DRIVEWAYS (TC-10)
57	ARTERIAL ROAD INFORMATION SIGN (TC-22)

HIGHWAY STANDARDS

STD. NO.	TITLE
000001-07	STANDARD SYMBOLS, ABBREVIATIONS AND PATTERNS
001001-02	AREAS OF REINFORCEMENT BARS
001006	DECIMAL OF AN INCH AND OF A FOOT
701006-05	OFF-ROAD OPERATIONS 2L, 2W, 15' (4.5 m) TO 24" (600 mm) FROM PAVEMENT EDGE
701101-05	OFF-ROAD OPERATIONS MULTILANE, 15' (4.5 m) TO 24" (600 mm) FROM PAVEMENT EDGE
701701-10	URBAN LANE CLOSURE MULTILANE INTERSECTION
701801-06	SIDEWALK, CORNER OR CROSSWALK CLOSURE
701901-08	TRAFFIC CONTROL DEVICES
720001-01	SIGN PANEL MOUNTING DETAIL
814001-03	HANDHOLES
814006-02	DOUBLE HANDHOLES
873001-02	TRAFFIC SIGNAL GROUNDING & BONDING
877001-07	STEEL MAST ARM ASSEMBLY AND POLE 16' THROUGH 55'
877011-10	STEEL COMBINATION MAST ARM ASSEMBLY AND POLE 16' THROUGH 55'
878001-10	CONCRETE FOUNDATION DETAILS
880006-01	TRAFFIC SIGNAL MOUNTING DETAILS
886001-01	DETECTOR LOOP INSTALLATIONS

RLR NOTES

DUE TO THE PRESENCE OF A RED LIGHT RUNNING (RLR) CAMERA FOR THE BELOW LISTED LOCATIONS, CONTRACTOR SHALL NOTIFY THE VILLAGE AND RLR CAMERA COMPANY PRIOR TO THE START OF CONSTRUCTION. THE VILLAGE OR THE RLR CAMERA COMPANY SHALL MAKE THE CAMERA INOPERATIVE FOR THE TIME OF CONSTRUCTION. ANY RLR CAMERA EQUIPMENT THAT IS IN CONFLICT WITH THE PROPOSED CONSTRUCTION SHALL BE REMOVED BY ITS RESPECTIVE OWNERS PRIOR TO THE START OF CONSTRUCTION.

RLR CAMERA LOCATION:
TS 5625 PALATINE RD AT WHEELING RD

VILLAGE OF WHEELING 2 COMMUNITY BLVD WHEELING, IL 60090 (847) 459-2600	RED SPEED, LLC. 400 EISENHOWER LANE LOMBARD, ILLINOIS 60148 (630) 317-5700
---	---

GENERAL NOTES

BEFORE STARTING ANY EXCAVATION, THE CONTRACTOR SHALL CALL "J.U.L.I.E." AT (800) 892-0123 OR 811 FOR FIELD LOCATIONS OF BURIED ELECTRIC, TELEPHONE AND GAS. 48 HOUR NOTIFICATION IS REQUIRED.

THE CONTRACTOR SHALL CONTACT THE TRAFFIC CONTROL SUPERVISOR AT (847) 705-4470, 72 HOURS IN ADVANCE OF BEGINNING WORK.

IT SHALL BE THE CONTRACTOR'S RESPONSIBILITY TO VERIFY ALL DIMENSIONS AND CONDITIONS EXISTING IN THE FIELD PRIOR TO ORDERING MATERIALS AND BEGINNING CONSTRUCTION. THIS SHALL INCLUDE LOCATING THE MAST ARM FOUNDATIONS AND VERIFYING THE MAST ARM LENGTHS.

ALL EXISTING R.O.W. SHOWN IS APPROXIMATE AND MAY NEED TO BE VERIFIED IN THE FIELD. ANY R.O.W. CONFLICTS SHALL BE COORDINATED WITH THE RESIDENT ENGINEER.

THE EXACT LOCATION OF ALL UTILITIES SHALL BE FIELD VERIFIED BY THE CONTRACTOR BEFORE ORDERING ANY MATERIALS AND STARTING ANY WORK. FOR LOCATIONS OF UTILITIES, LOCALLY OWNED EQUIPMENT, LEASED ENFORCEMENT CAMERA SYSTEM FACILITIES AND IDOT UNDERGROUND FACILITIES, CONTACT THE LOCAL COUNTIES, MUNICIPALITIES AND IDOT FOR LOCATES. THE CONTRACTOR SHALL CALL "JULIE" AT (800) 892-0123 OR 811, IN THE CITY OF CHICAGO CONTACT DIGGER AT (312) 744-7000 FOR FIELD LOCATIONS OF BURIED UTILITIES (48 HOURS NOTIFICATION REQUIRED).

IF THIS CONTRACT REQUIRES THE SERVICES OF AN ELECTRICAL CONTRACTOR, THE CONTRACTOR SHALL BE RESPONSIBLE AT HIS/HER OWN EXPENSE FOR LOCATING EXISTING IDOT ELECTRICAL FACILITIES PRIOR TO PERFORMING ANY WORK. IF THIS CONTRACT DOES NOT REQUIRE THE SERVICES OF AN ELECTRICAL CONTRACTOR, THE CONTRACTOR MAY REQUEST ONE FREE LOCATE FOR EXISTING IDOT ELECTRICAL FACILITIES FROM THE DISTRICT ONE ELECTRICAL MAINTENANCE CONTRACTOR PRIOR TO THE START OF ANY WORK. ADDITIONAL REQUESTS MAY BE AT THE EXPENSE OF THE CONTRACTOR. THE LOCATION OF UNDERGROUND TRAFFIC FACILITIES DOES NOT RELIEVE THE CONTRACTOR OF THEIR RESPONSIBILITY TO REPAIR ANY FACILITIES DAMAGED DURING CONSTRUCTION AT THEIR EXPENSE.

THE CONTRACTOR SHALL CHECK THE PROPOSED TRAFFIC SIGNAL EQUIPMENT LOCATIONS FOR UNDERGROUND AND OVERHEAD UTILITY CONFLICTS. THE CONTRACTOR SHALL NOTIFY THE AREA ENGINEER, THE RESIDENT ENGINEER AND ANY IMPACTED UTILITY COMPANY OF THE CONFLICT, AND SHALL COORDINATE AND RESOLVE THE ISSUE PRIOR TO ORDERING MATERIALS, AND PRIOR TO POURING FOUNDATIONS.

THE CONTRACTOR SHALL COORDINATE CONSTRUCTION ACTIVITIES WITH UTILITY COMPANIES, LOCAL GOVERNMENT AGENCIES AND IDOT.

RESTORATION OF THE TRAFFIC SIGNAL WORK AREA SHALL BE INCLUDED IN THE RELATED PAY ITEM SUCH AS FOUNDATION, CONDUIT, HANDHOLE, ETC., AND NO EXTRA COMPENSATION SHALL BE ALLOWED. ALL ROADWAY SURFACES SUCH AS SHOULDERS, MEDIAN, SIDEWALKS, PAVEMENT ETC. SHALL BE REPLACED IN KIND. ALL DAMAGE TO MOWED LAWNS SHALL BE REPLACED WITH AN APPROVED SOD, AND ALL DAMAGE TO UNMOWED FIELDS SHALL BE SEEDED IN ACCORDANCE WITH STANDARD SPECIFICATIONS 252 AND 250 RESPECTIVELY.

PARTIAL PAYMENT AS DESCRIBED IN ARTICLE 109.07(b) OF THE STANDARD SPECIFICATIONS WILL NOT BE ALLOWED FOR ITEMS INCLUDED IN THIS CONTRACT.

AT LOCATIONS ON THE PLANS WHERE TRAFFIC SIGNAL POST AND/OR MAST ARM AND POLE REMOVAL IS IDENTIFIED AND NEW TRAFFIC SIGNAL POST INSTALLATIONS ARE SPECIFIED, THE CONTRACTOR SHALL INSPECT THE EXISTING FOUNDATIONS. PRIOR TO REMOVING THE EXISTING EQUIPMENT, THE CONTRACTOR SHALL VERIFY THAT THE PATTERN, SPACING, AND CONDITION OF THE EXISTING ANCHOR BOLT IS ACCEPTABLE FOR REUSE WITH A NEW POST. IF THE EXISTING ANCHOR BOLT CONDITION IS NOT ACCEPTABLE, THE CONTRACTOR SHALL REPLACE ANCHOR BOLT AS DIRECTED BY THE ENGINEER. ANCHOR BOLT REPLACEMENT WILL BE PAID FOR AS "REMOVE AND REPLACE ANCHOR BOLTS". "REMOVE AND REPLACE ANCHOR BOLTS" PAY ITEM QUANTITIES SHOWN ARE NOMINAL AND ONLY TO BE UTILIZED AS APPROVED BY THE ENGINEER.

LOCATIONS WITH PEDESTRIAN EQUIPMENT HAVE BEEN DESIGNED TO BE ADA COMPLIANT. ANY DEVIATION FROM THE PLANS FOR TRAFFIC SIGNAL MAST ARM/POSTS THAT HAVE PEDESTRIAN EQUIPMENT WILL HAVE TO BE APPROVED BY THE ENGINEER TO INSURE ADA COMPLIANCE.

MODEL: D:\p\it... FILE NAME: S:\p\Design\Ibvan08_MastArmContracts\62H46 - June 2019\CADD\62H46-rt-general.dgn

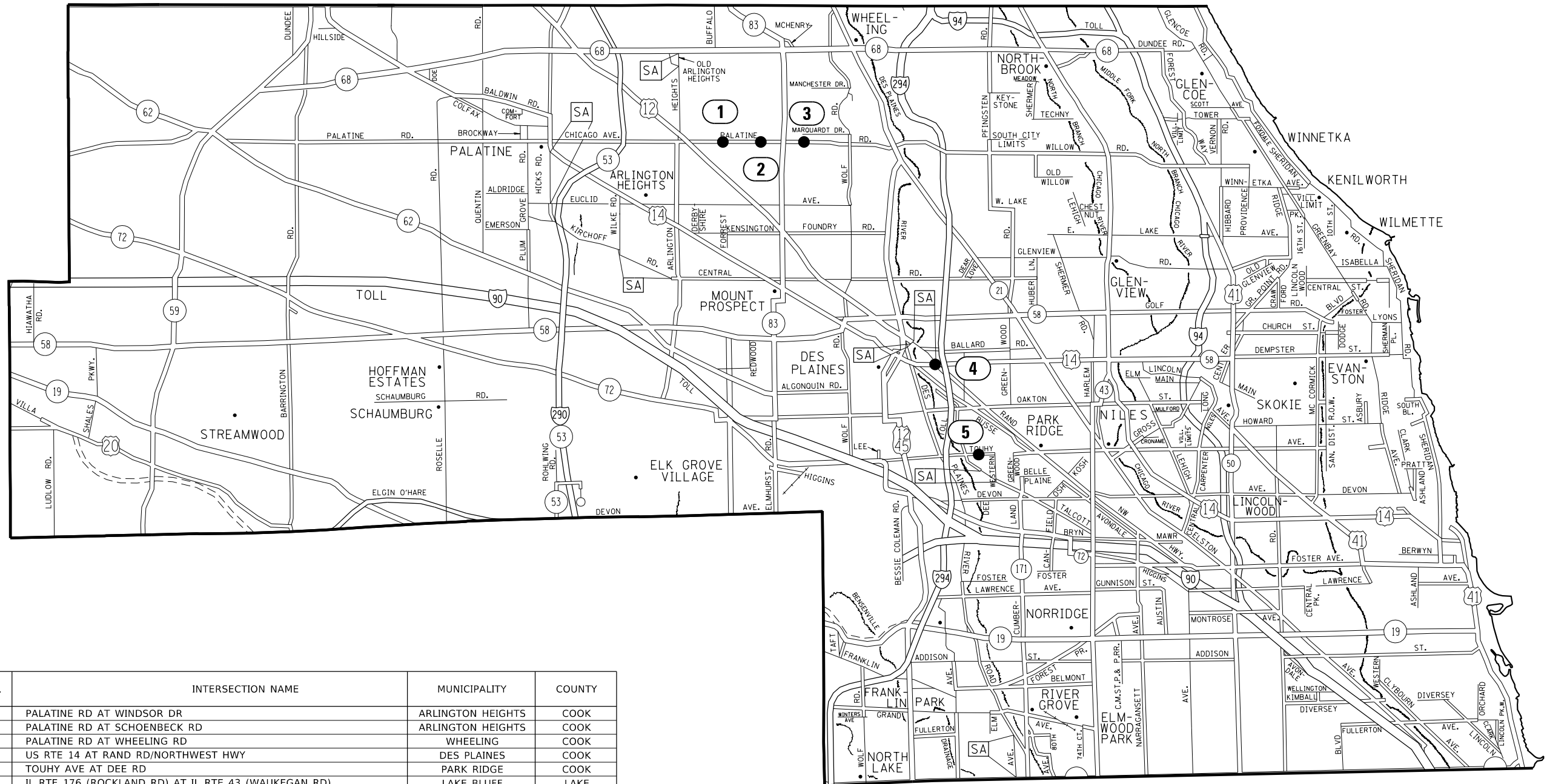
USER NAME = plascenciai	DESIGNED - IP	REVISED - 5/30/2019
	DRAWN - IP	REVISED -
PLOT SCALE = 100.0000 ' / in.	CHECKED - LP	REVISED -
PLOT DATE = 5/30/2019	DATE - 3/15/2019	REVISED -

**STATE OF ILLINOIS
DEPARTMENT OF TRANSPORTATION**

INDEX OF SHEETS, HIGHWAY STANDARDS & GENERAL NOTES

SCALE: SHEET OF SHEETS STA. TO STA.

F.A. RTE.	SECTION	COUNTY	TOTAL SHEETS	SHEET NO.
	2018-099-T5	VARIOUS	57	2
			CONTRACT NO. 62H46	
		ILLINOIS	FED. AID PROJECT	



LOC. NO.	TS NO.	INTERSECTION NAME	MUNICIPALITY	COUNTY
1	5630	PALATINE RD AT WINDSOR DR	ARLINGTON HEIGHTS	COOK
2	5620	PALATINE RD AT SCHOENBECK RD	ARLINGTON HEIGHTS	COOK
3	5625	PALATINE RD AT WHEELING RD	WHEELING	COOK
4	1285	US RTE 14 AT RAND RD/NORTHWEST HWY	DES PLAINES	COOK
5	5830	TOUHY AVE AT DEE RD	PARK RIDGE	COOK
6	6805	IL RTE 176 (ROCKLAND RD) AT IL RTE 43 (WAUKEGAN RD)	LAKE BLUFF	LAKE
7	7020	IL RTE 176 (ROCKLAND RD) AT IL RTE 131 (GREEN BAY RD)	LAKE BLUFF	LAKE
8	735	IL RTE 38 (STATE ST) AT IL RTE 25 (BENNETT ST)	GENEVA	KANE

△ LOCATION REMOVED

MODEL: D:\p1\...
 FILE: 2019\CD\DD\62146 - June 2019\CD\DD\62146-rts-general.dgn

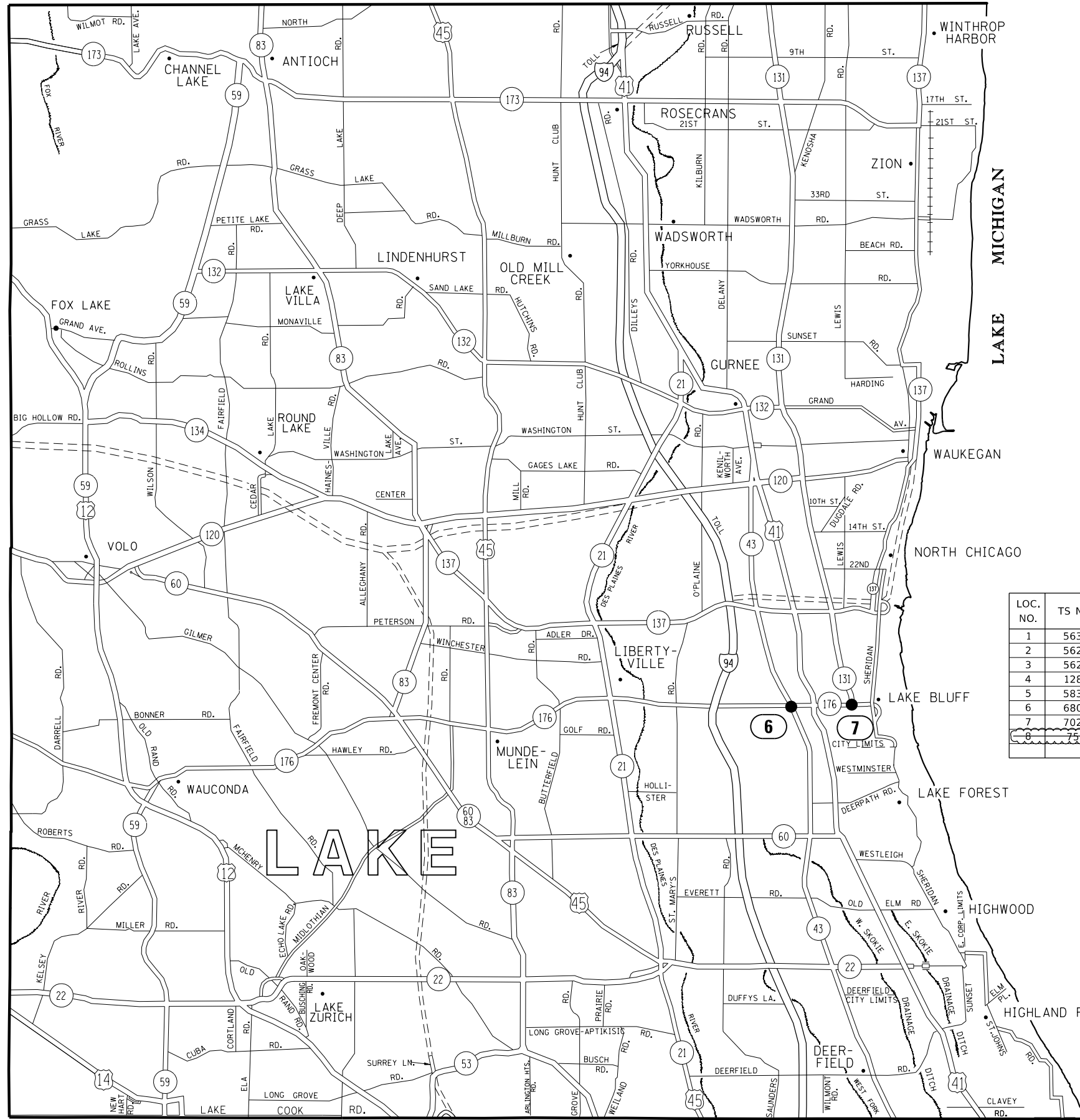
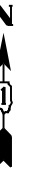
USER NAME = plascenciai	DESIGNED - IP	REVISED - 5/30/2019
	DRAWN - IP	REVISED -
PLOT SCALE = 100,0000' / in.	CHECKED - LP	REVISED -
PLOT DATE = 5/30/2019	DATE - 3/15/2019	REVISED -

**STATE OF ILLINOIS
DEPARTMENT OF TRANSPORTATION**

**LOCATION MAP
NORTH COOK COUNTY**

SCALE: SHEET OF SHEETS STA. TO STA.

F.A. RTE.	SECTION	COUNTY	TOTAL SHEETS	SHEET NO.
VAR	2018-099-T5	VARIOUS	57	3
			CONTRACT NO. 62H46	
		ILLINOIS FED. AID PROJECT		



LOC. NO.	TS NO.	INTERSECTION NAME	MUNICIPALITY	COUNTY
1	5630	PALATINE RD AT WINDSOR DR	ARLINGTON HEIGHTS	COOK
2	5620	PALATINE RD AT SCHOENBECK RD	ARLINGTON HEIGHTS	COOK
3	5625	PALATINE RD AT WHEELING RD	WHEELING	COOK
4	1285	US RTE 14 AT RAND RD/NORTHWEST HWY	DES PLAINES	COOK
5	5830	TOUHY AVE AT DEE RD	PARK RIDGE	COOK
6	6805	IL RTE 176 (ROCKLAND RD) AT IL RTE 43 (WAUKEGAN RD)	LAKE BLUFF	LAKE
7	7020	IL RTE 176 (ROCKLAND RD) AT IL RTE 131 (GREEN BAY RD)	LAKE BLUFF	LAKE
8	755	IL RTE 38 (STATE ST) AT IL RTE 25 (BENNETT ST)	GENEVA	KANE

△ LOCATION REMOVED

MODEL: D:\dft\...
 FILE: NAME: S:\V\Design\lvanan08_Maps\dm\Contract\62H46 - June 2019\CADD\62H46-pts-general.dgn

USER NAME = plascenciai	DESIGNED - IP	REVISED - 5/30/2019
PLOT SCALE = 100,0000' / in.	DRAWN - IP	REVISED -
PLOT DATE = 5/30/2019	CHECKED - LP	REVISED -
	DATE - 3/15/2019	REVISED -

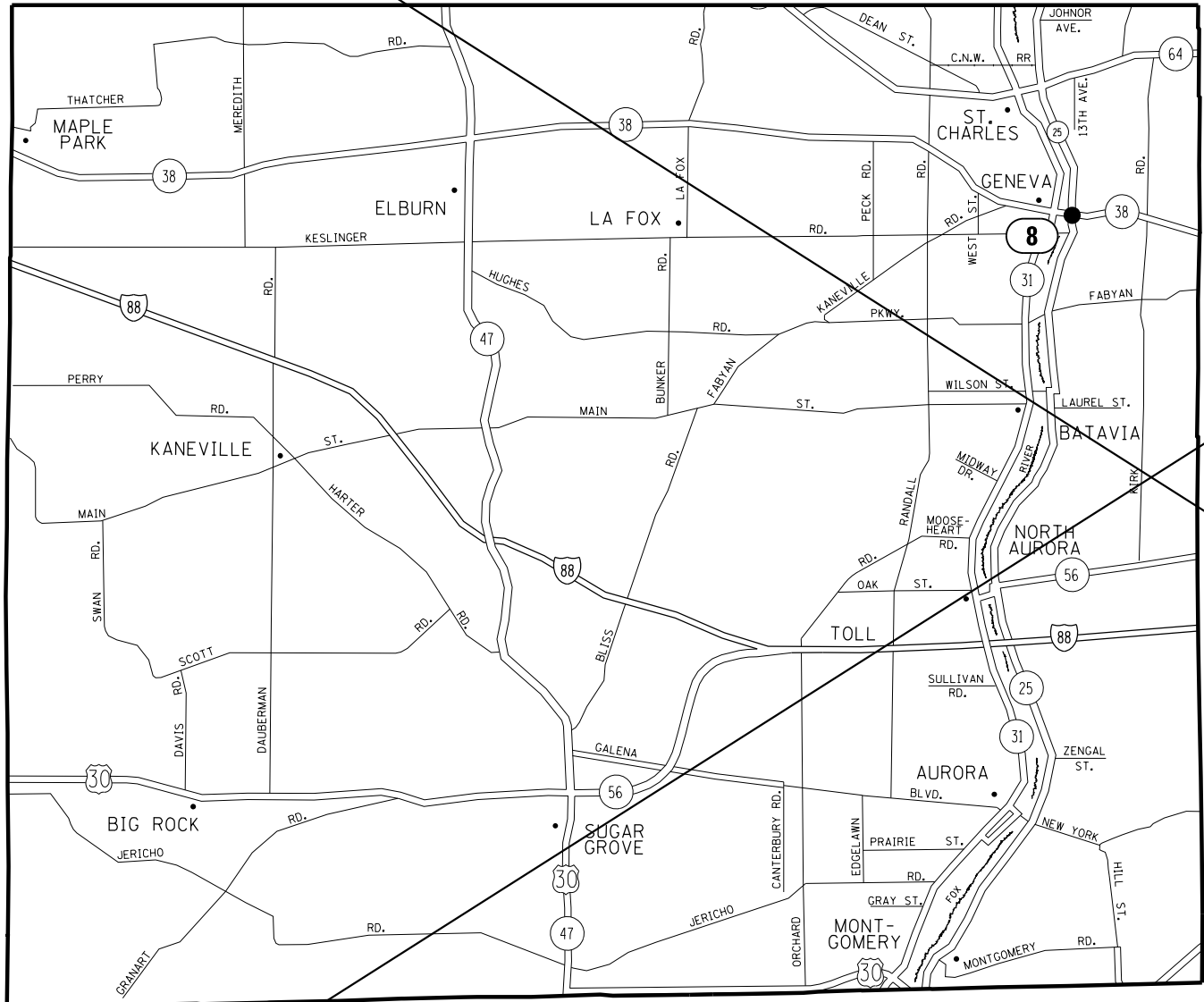
**STATE OF ILLINOIS
DEPARTMENT OF TRANSPORTATION**

**LOCATION MAP
LAKE COUNTY**

SCALE: SHEET OF SHEETS STA. TO STA.

F.A. RTE.	SECTION	COUNTY	TOTAL SHEETS	SHEET NO.
VAR	2018-099-T5	VARIOUS	57	4
			CONTRACT NO. 62H46	
ILLINOIS FED. AID PROJECT				

LOCATION REMOVED



LOC. NO.	TS NO.	INTERSECTION NAME	MUNICIPALITY	COUNTY
1	5630	PALATINE RD AT WINDSOR DR	ARLINGTON HEIGHTS	COOK
2	5620	PALATINE RD AT SCHOENBECK RD	ARLINGTON HEIGHTS	COOK
3	5625	PALATINE RD AT WHEELING RD	WHEELING	COOK
4	1285	US RTE 14 AT RAND RD/NORTHWEST HWY	DES PLAINES	COOK
5	5830	TOUHY AVE AT DEE RD	PARK RIDGE	COOK
6	6805	IL RTE 176 (ROCKLAND RD) AT IL RTE 43 (WAUKEGAN RD)	LAKE BLUFF	LAKE
7	7020	IL RTE 176 (ROCKLAND RD) AT IL RTE 131 (GREEN BAY RD)	LAKE BLUFF	LAKE
8	735	IL RTE 38 (STATE ST) AT IL RTE 25 (BENNETT ST)	GENEVA	KANE

△ LOCATION REMOVED

MODEL: D:\dft\...
 FILE: NAME: SURV\PR\Design\Bvan08_Maps\dm\Contract\62H46 - June 2019\CADD\62H46-rft-general.dgn

USER NAME = plascenciai	DESIGNED - IP	REVISED - △ 5/30/2019
PLOT SCALE = 100,000' / in.	DRAWN - IP	REVISED -
PLOT DATE = 5/30/2019	CHECKED - LP	REVISED -
	DATE - 3/15/2019	REVISED -

**STATE OF ILLINOIS
DEPARTMENT OF TRANSPORTATION**

**LOCATION MAP
KANE COUNTY**

SCALE: SHEET OF SHEETS STA. TO STA.

F.A. RTE.	SECTION	COUNTY	TOTAL SHEETS	SHEET NO.
VAR	2018-099-T5	VARIOUS	57	5
			CONTRACT NO. 62H46	
		ILLINOIS	FED. AID PROJECT	

MODEL: D:\p\it...
FILE NAME: S:\V\Design\Ivanan08_Mtazam\Contract\62H46 - June 2019\CADD\62H46-CH-General.dgn

CODE NO.	ITEM	UNIT	TOTAL QUANTITY	VARIOUS COUNTIES		CONSTRUCTION CODE	
				80% FED 20% STATE COOK COUNTY	80% FED 20% STATE LAKE COUNTY		
							TRAFFIC SIGNALS 021 URBAN
* 66900200	NON-SPECIAL WASTE DISPOSAL	CU YD	89	48	41		
* 66900530	SOIL DISPOSAL ANALYSIS	EACH	3	2	1		
* 66901001	REGULATED SUBSTANCES PRE-CONSTRUCTION PLAN	LSUM	1	0.67	0.33		
* 66901002	ON-SITE MONITORING OF REGULATED SUBSTANCES	CAL DA	6	4	2		
* 66901003	REGULATED SUBSTANCES FINAL CONSTRUCTION REPORT	LSUM	1	0.67	0.33		
67000400	ENGINEER'S FIELD OFFICE, TYPE A	CAL MO	3	2	1		
67100100	MOBILIZATION	L SUM	1	0.71	0.29		
70102635	TRAFFIC CONTROL AND PROTECTION, STANDARD 701701	L SUM	1	0.71	0.29		
70102640	TRAFFIC CONTROL AND PROTECTION, STANDARD 701801	L SUM	1	0.71	0.29		
* 72000100	SIGN PANEL - TYPE 1	SQ FT	75	75			
81028200	UNDERGROUND CONDUIT, GALVANIZED STEEL, 2" DIA.	FOOT	651	249	402		
81028220	UNDERGROUND CONDUIT, GALVANIZED STEEL, 3" DIA.	FOOT	465	318	147		
81028240	UNDERGROUND CONDUIT, GALVANIZED STEEL, 4" DIA.	FOOT	629	530	99		
81400200	HEAVY-DUTY HANDHOLE	EACH	8		8		

*= SPECIALTY ITEM

USER NAME = plascenciai	DESIGNED - IP	REVISED -
PLOT SCALE = 100.0000' / in.	DRAWN - IP	REVISED -
PLOT DATE = 5/10/2019	CHECKED - LP	REVISED -
	DATE - 3/15/2019	REVISED -

**STATE OF ILLINOIS
DEPARTMENT OF TRANSPORTATION**

SUMMARY OF QUANTITIES (SHEET 1 OF 5)			
SCALE:	SHEET	OF	SHEETS
	STA.	TO	STA.

F.A. RTE.	SECTION	COUNTY	TOTAL SHEETS	SHEET NO.
VAR	2018-099-T5	VARIOUS	57	6
			CONTRACT NO. 62H46	

MODEL: Default
 FILE: Model6_SummaryQuantities.dwg - June 2019\CADD\62H46-CH-General.dwg

CODE NO.	ITEM	UNIT	TOTAL QUANTITY	VARIOUS COUNTIES		CONSTRUCTION CODE	
				80% FED 20% STATE COOK COUNTY	80% FED 20% STATE LAKE COUNTY	TRAFFIC SIGNALS 0021 URBAN	
81400300	DOUBLE HANDHOLE	EACH	1	1			
85000200	MAINTENANCE OF EXISTING TRAFFIC SIGNAL INSTALLATION	EACH	7	5	2		
87301215	ELECTRIC CABLE IN CONDUIT, SIGNAL NO. 14 2C	FOOT	2581	1,756	825		
87301225	ELECTRIC CABLE IN CONDUIT, SIGNAL NO. 14 3C	FOOT	4529	3,095	1,434		
87301245	ELECTRIC CABLE IN CONDUIT, SIGNAL NO. 14 5C	FOOT	9971	7,814	2,157		
87301255	ELECTRIC CABLE IN CONDUIT, SIGNAL NO. 14 7C	FOOT	2780	4,013	2,104		
87301305	ELECTRIC CABLE IN CONDUIT, LEAD-IN, NO. 14 1 PAIR	FOOT	1665	1,340	1,440		
87301900	ELECTRIC CABLE IN CONDUIT, EQUIPMENT GROUNDING CONDUCTOR, NO. 6 1C	FOOT	10	1,285	380		
87502500	TRAFFIC SIGNAL POST, GALVANIZED STEEL 16 FT.	EACH	10	9	1		
87700150	STEEL MAST ARM ASSEMBLY AND POLE, 22 FT.	EACH	4	2	2		
87700170	STEEL MAST ARM ASSEMBLY AND POLE, 26 FT.	EACH	1		1		
87700190	STEEL MAST ARM ASSEMBLY AND POLE, 30 FT.	EACH	3	3			
87700200	STEEL MAST ARM ASSEMBLY AND POLE, 32 FT.	EACH	2	2			
87700210	STEEL MAST ARM ASSEMBLY AND POLE, 34 FT.	EACH	2	2			

USER NAME = plascenciai	DESIGNED - IP	REVISED -
PLOT SCALE = 100.0000' / in.	DRAWN - IP	REVISED -
PLOT DATE = 5/10/2019	CHECKED - LP	REVISED -
	DATE - 3/15/2019	REVISED -

**STATE OF ILLINOIS
 DEPARTMENT OF TRANSPORTATION**

SUMMARY OF QUANTITIES (SHEET 2 OF 5)			
SCALE:	SHEET	OF	SHEETS
	STA.	TO	STA.

F.A. RTE.	SECTION	COUNTY	TOTAL SHEETS	SHEET NO.
VAR	2018-099-T5	VARIOUS	57	7
			CONTRACT NO. 62H46	
ILLINOIS FED. AID PROJECT				

CODE NO.	ITEM	UNIT	TOTAL QUANTITY	VARIOUS COUNTIES		CONSTRUCTION CODE	
				80% FED 20% STATE COOK COUNTY	80% FED 20% STATE LAKE COUNTY	TRAFFIC SIGNALS 0021 URBAN	
87700220	STEEL MAST ARM ASSEMBLY AND POLE, 36 FT.	EACH	2	2			
87700230	STEEL MAST ARM ASSEMBLY AND POLE, 38 FT.	EACH	1	1			
87700240	STEEL MAST ARM ASSEMBLY AND POLE, 40 FT.	EACH	2		2		
87700270	STEEL MAST ARM ASSEMBLY AND POLE, 46 FT.	EACH	1		1		
87700280	STEEL MAST ARM ASSEMBLY AND POLE, 48 FT.	EACH	2	2			
87702910	STEEL COMBINATION MAST ARM ASSEMBLY AND POLE 36 FT.	EACH	1		1		
87800100	CONCRETE FOUNDATION, TYPE A	FOOT	24	24			
87800400	CONCRETE FOUNDATION, TYPE E 30-INCH DIAMETER	FOOT	158	128	30		
87800415	CONCRETE FOUNDATION, TYPE E 36-INCH DIAMETER	FOOT	76	26	50		
87900200	DRILL EXISTING HANDHOLE	EACH	47	26	21		
88030020	SIGNAL HEAD, LED, 1-FACE, 3-SECTION, MAST-ARM MOUNTED	EACH	35	24	11		
88030050	SIGNAL HEAD, LED, 1-FACE, 3-SECTION, BRACKET MOUNTED	EACH	13	12	1		
88030100	SIGNAL HEAD, LED, 1-FACE, 5-SECTION, BRACKET MOUNTED	EACH	21	12	9		
88030110	SIGNAL HEAD, LED, 1-FACE, 5-SECTION, MAST-ARM MOUNTED	EACH	21	12	9		

MODEL: Default
 FILE NAME: S:\V\Projects\Design\Ivanan08_MastArm\Contract\62H46 - June 2019\CADD\62H46-CH-General.dgn

USER NAME = plascenciai	DESIGNED - IP	REVISED -
PLOT SCALE = 100.0000' / in.	DRAWN - IP	REVISED -
PLOT DATE = 5/13/2019	CHECKED - LP	REVISED -
	DATE - 3/15/2019	REVISED -

**STATE OF ILLINOIS
DEPARTMENT OF TRANSPORTATION**

**SUMMARY OF QUANTITIES
(SHEET 3 OF 5)**

SCALE: SHEET OF SHEETS STA. TO STA.

F.A. RTE.	SECTION	COUNTY	TOTAL SHEETS	SHEET NO.
	2018-099-T5	VARIOUS	57	8
			CONTRACT NO. 62H46	
ILLINOIS FED. AID PROJECT				

MODEL: Default
 FILE NAME: S:\WP\Design\Ibvan08_MastArmContract\62H46 - June 2019\CADD\62H46-sht-general.dgn

CODE NO.	ITEM	UNIT	TOTAL QUANTITY	CONSTRUCTION CODE		TRAFFIC SIGNALS	
				80% FED 20% STATE COOK COUNTY	80% FED 20% STATE LAKE COUNTY	0021	URBAN
88055150	OPTICALLY PROGRAMMED SIGNAL HEAD, LED, 1-FACE, 3-SECTION, BRACKET MOUNTED	EACH	8	8			
88055160	OPTICALLY PROGRAMMED SIGNAL HEAD, LED, 1-FACE, 3-SECTION, MAST ARM MOUNTED	EACH	28	28			
88200410	TRAFFIC SIGNAL BACKPLATE, LOUVERED, FORMED PLASTIC	EACH	84	64	20		
88600100	DETECTOR LOOP, TYPE I	FOOT	905		905		
88800100	PEDESTRIAN PUSH BUTTON	EACH					
89500200	RELOCATE EXISTING PEDESTRIAN SIGNAL HEAD	EACH	19	11	8		
89500400	RELOCATE EXISTING PEDESTRIAN PUSH-BUTTON	EACH	14	11	3		
89501250	RELOCATE EXISTING TRAFFIC SIGNAL EQUIPMENT	EACH	6	4	2		
89502200	MODIFY EXISTING CONTROLLER	EACH	2	2			
89502210	MODIFY EXISTING CONTROLLER CABINET	EACH	2	2			
89502300	REMOVE ELECTRIC CABLE FROM CONDUIT	FOOT	16,120	10,720	5,400		
89502350	REMOVE AND REINSTALL ELECTRIC CABLE FROM CONDUIT	FOOT	1,385	500	885		
89502375	REMOVE EXISTING TRAFFIC SIGNAL EQUIPMENT	EACH	7	5	2		
89502380	REMOVE EXISTING HANDHOLE	EACH	8	7	1		

USER NAME = plascencial	DESIGNED - IP	REVISED -
PLOT SCALE = 100.0000' / in.	DRAWN - JP	REVISED -
PLOT DATE = 5/13/2019	CHECKED - LP	REVISED -
	DATE - 3/15/2019	REVISED -

**STATE OF ILLINOIS
DEPARTMENT OF TRANSPORTATION**

**SUMMARY OF QUANTITIES
(SHEET 4 OF 5)**

SCALE: SHEET OF SHEETS STA. TO STA.

F.A. RTE.	SECTION	COUNTY	TOTAL SHEETS	SHEET NO.
VAR	2018-099-T5	VARIOUS	57	9
			CONTRACT NO. 62H46	
ILLINOIS FED. AID PROJECT				

CODE NO.	ITEM	UNIT	TOTAL QUANTITY	VARIOUS COUNTIES		CONSTRUCTION CODE			
				80% FED 20% STATE COOK COUNTY	80% FED 20% STATE LAKE COUNTY	TRAFFIC SIGNALS			
						0021		URBAN	
89502385	REMOVE EXISTING CONCRETE FOUNDATION	EACH	24	15	9				
X0324085	EMERGENCY VEHICLE PRIORITY SYSTEM LINE SENSOR CABLE, NO. 20 3/C	FOOT	1876	1,295	581				
X1400102	OUTDOOR RATED NETWORK CABLE	FOOT	250		250				
X8130125	REMOVE EXISTING JUNCTION BOX	EACH	4		4				
X8760200	ACCESSIBLE PEDESTRIAN SIGNALS	EACH	8		8				
Z0030850	TEMPORARY INFORMATION SIGNING	SQ FT	565.4	359.8	205.6				
Z0050400	REMOVE AND REPLACE ANCHOR BOLTS	EACH	3	2	1				
X1400367	PEDESTRIAN SIGNAL POST, 10 FT.	EACH	8	4	4				
X8780010	CONCRETE FOUNDATION, TYPE A 10-INCH DIAMETER	FOOT	32	16	16				

MODEL: D:\d46\1
FILE NAME: S:\XIP\Design\Ivanan08_Mtazam\Contract\62H46 - June 2019\CADD\62H46-05-01-general.dgn

USER NAME = plascenciai	DESIGNED - IP	REVISED -
	DRAWN - IP	REVISED -
PLOT SCALE = 100.0000' / in.	CHECKED - LP	REVISED -
PLOT DATE = 5/10/2019	DATE - 3/15/2019	REVISED -

**STATE OF ILLINOIS
DEPARTMENT OF TRANSPORTATION**

**SUMMARY OF QUANTITIES
(SHEET 5 OF 5)**

SCALE: SHEET OF SHEETS STA. TO STA.

F.A. RTE.	SECTION	COUNTY	TOTAL SHEETS	SHEET NO.
VAR	2018-099-T5	VARIOUS	57	10
			CONTRACT NO. 62H46	

REMOVAL AND RELOCATION NOTES:

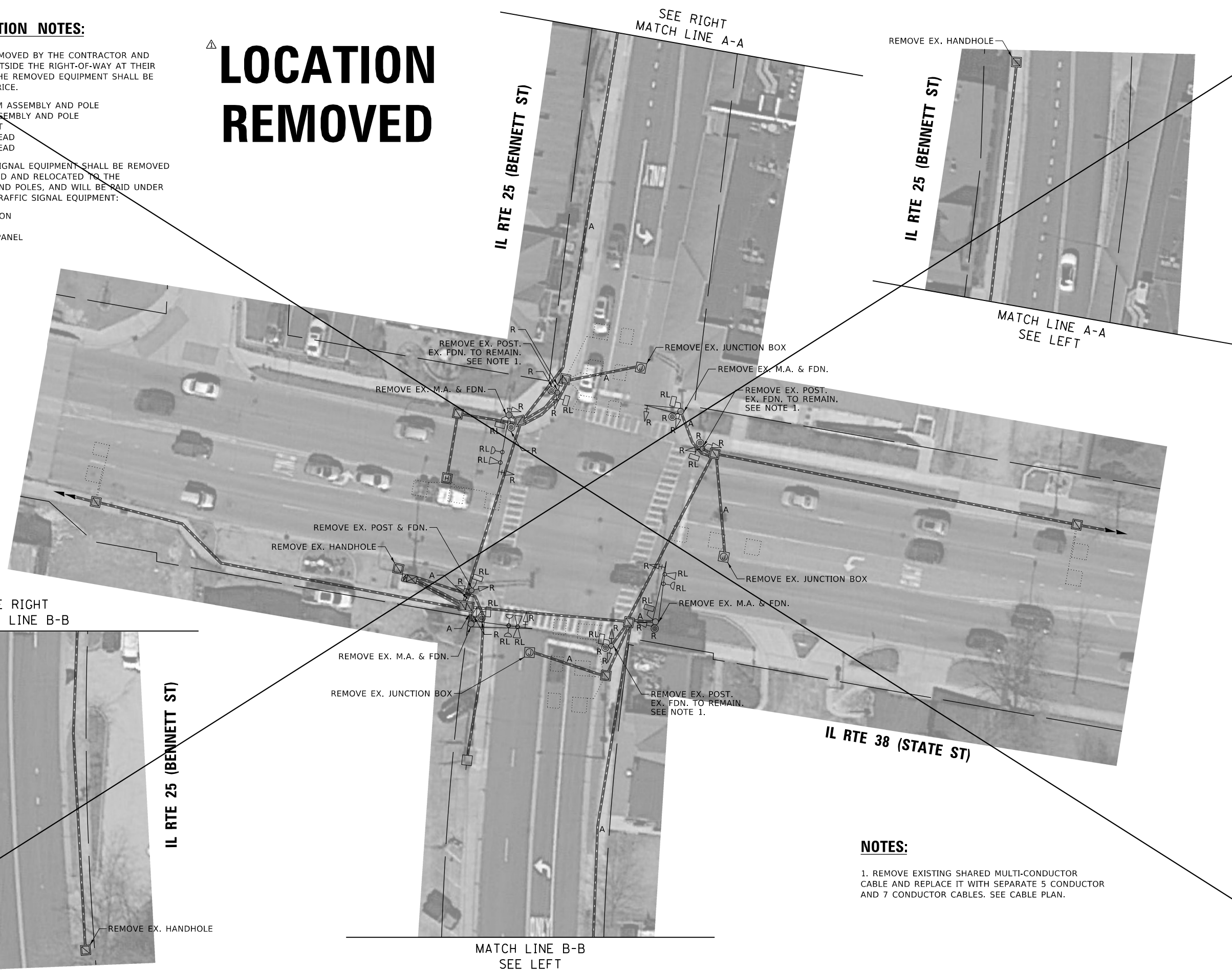
THE FOLLOWING ITEMS SHALL BE REMOVED BY THE CONTRACTOR AND SHALL BE DISPOSED OF BY THEM OUTSIDE THE RIGHT-OF-WAY AT THEIR EXPENSE. THE SALVAGE VALUE OF THE REMOVED EQUIPMENT SHALL BE REFLECTED IN THE CONTRACT BID PRICE.

- 3 EACH ALUMINUM MAST ARM ASSEMBLY AND POLE
- 1 EACH STEEL MAST ARM ASSEMBLY AND POLE
- 4 EACH TRAFFIC SIGNAL POST
- 8 EACH 3-SECTION SIGNAL HEAD
- 8 EACH 5-SECTION SIGNAL HEAD

THE FOLLOWING EXISTING TRAFFIC SIGNAL EQUIPMENT SHALL BE REMOVED BY THE CONTRACTOR, SAFELY STORED AND RELOCATED TO THE PROPOSED MAST ARM ASSEMBLIES AND POLES, AND WILL BE PAID UNDER THE PAY ITEM RELOCATE EXISTING TRAFFIC SIGNAL EQUIPMENT:

- 3 EACH CONFIRMATION BEACON
- 3 EACH LIGHT DETECTOR
- 4 EACH STREET NAME SIGN PANEL

**LOCATION
REMOVED**



NOTES:

1. REMOVE EXISTING SHARED MULTI-CONDUCTOR CABLE AND REPLACE IT WITH SEPARATE 5 CONDUCTOR AND 7 CONDUCTOR CABLES. SEE CABLE PLAN.

MODEL: Default
FILE: \\nas01\svr\proj\Design\Bennett\08_MastArm\Contract\62H46 - June 2019\CADD\62H46-rts.dgn

**TS 755
EAGLE 2G**

USER NAME = plascenciai	DESIGNED - IP	REVISED - 5/30/2019
PLOT SCALE = 40,0000 ' / in.	DRAWN - IP	REVISED -
PLOT DATE = 5/30/2019	CHECKED - LP	REVISED -
	DATE - 3/15/2019	REVISED -

**STATE OF ILLINOIS
DEPARTMENT OF TRANSPORTATION**

**TRAFFIC SIGNAL REMOVAL PLAN
IL RTE 38 (STATE ST) AT IL RTE 25 (BENNETT ST)**

SCALE: SHEET OF SHEETS STA. TO STA.

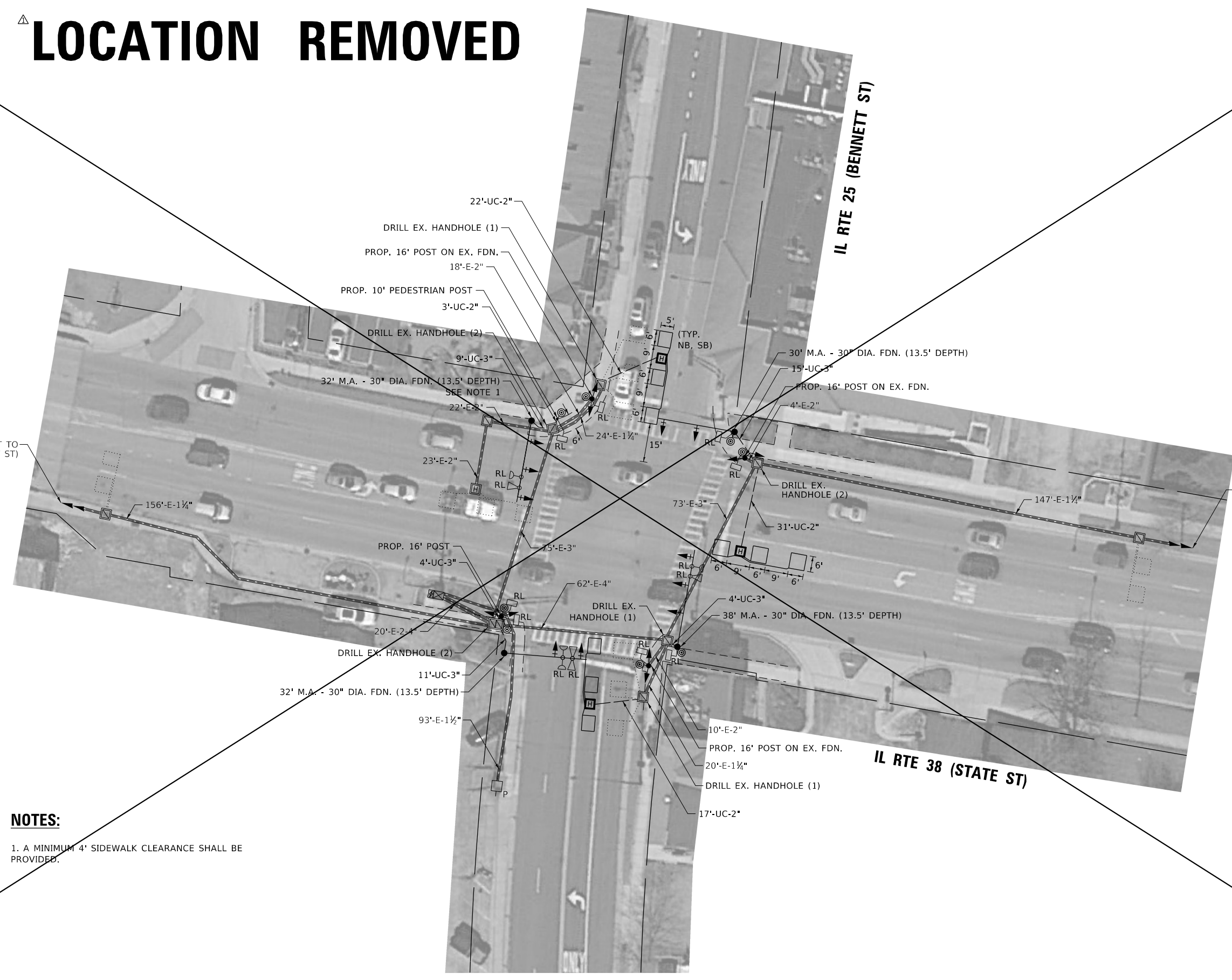
F.A. RTE.	SECTION	COUNTY	TOTAL SHEETS	SHEET NO.
VAR	2018-099-TS	KANE	57	52
			CONTRACT NO. 62H46	
		ILLINOIS	FED. AID PROJECT	

LOCATION REMOVED



EX. INTERCONNECT TO IL RTE 31 (FIRST ST)

EX. INTERCONNECT FROM E SIDE DR TO IL RTE 38 AT IL RTE 25 FOR ADVANCED WB EVP



NOTES:

1. A MINIMUM 4' SIDEWALK CLEARANCE SHALL BE PROVIDED.

MODEL: Default; FILE: 62H46; SW: 19/03/2019; Design: Ivanov08; Mstafarm; Contract: 62H46; Date: June 2019; CADD: 62H46-01-01.dgn

**TS 755
EAGLE 2G**

USER NAME = plascenciai	DESIGNED - IP	REVISED - 5/30/2019
PLOT SCALE = 40,0000 ' / in.	DRAWN - IP	REVISED -
PLOT DATE = 5/30/2019	CHECKED - LP	REVISED -
	DATE - 3/15/2019	REVISED -

**STATE OF ILLINOIS
DEPARTMENT OF TRANSPORTATION**

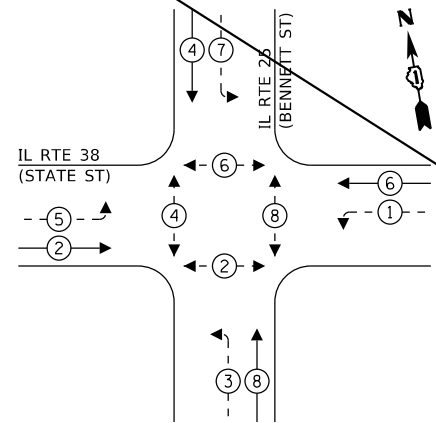
**TRAFFIC SIGNAL MODERNIZATION PLAN
IL RTE 38 (STATE ST) AT IL RTE 25 (BENNETT ST)**

SCALE: SHEET OF SHEETS STA. TO STA.

F.A. RTE.	SECTION	COUNTY	TOTAL SHEETS	SHEET NO.
VAR	2018-099-TS	KANE	57	53
CONTRACT NO. 62H46				
ILLINOIS FED. AID PROJECT				

LOCATION REMOVED

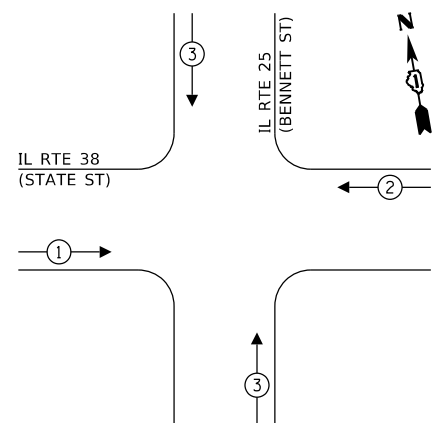
EXISTING CONTROLLER SEQUENCE



LEGEND:

- ← ⊛ ← PROTECTED PHASE
- ← ⊛ - - PROTECTED/PERMITTED PHASE
- ← ⊛ → PEDESTRIAN PHASE
- ← ⊛ OL OVERLAP

EXISTING EMERGENCY VEHICLE PREEMPTION SEQUENCE



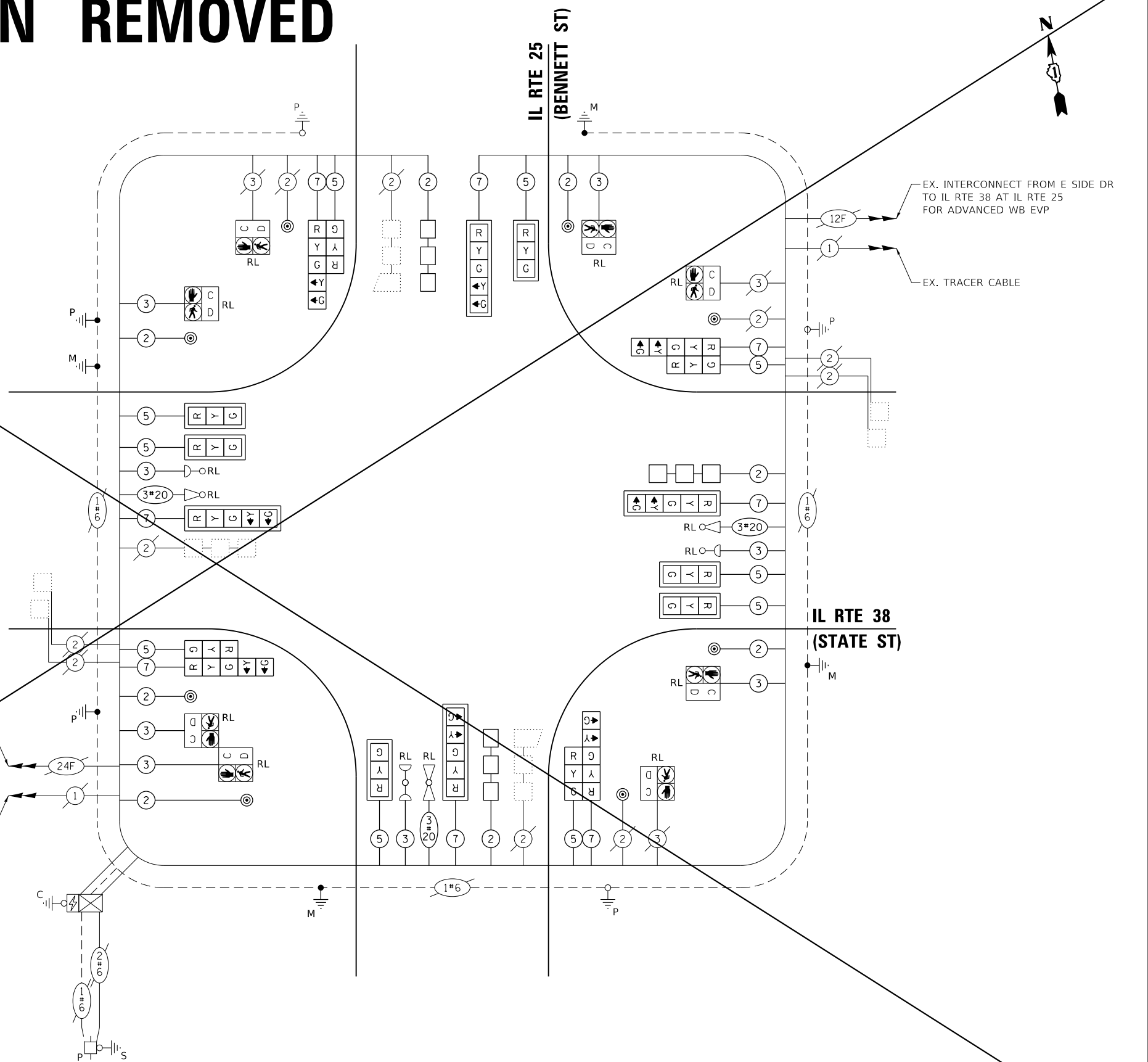
TRAFFIC SIGNAL ELECTRICAL SERVICE REQUIREMENTS

TYPE	NO. OF LAMPS	LED WATTAGE	% OPERATION	TOTAL WATTAGE
SIGNAL (RED)	18	11	50	99.0
(YELLOW)	18	20	5	18.0
(GREEN)	18	12	45	97.2
PERMISSIVE ARROW	16	10	10	16.0
PED. SIGNAL	8	20	100	160.0
CONTROLLER	1	100	100	100.0
UPS	1	25	100	25.0
VIDEO SYSTEM	-	100	100	-
BLANK-OUT SIGN	-	25	5	-
FLASHER	-	-	50	-
STREET NAME SIGN	-	120	50	-
LUMINAIRE	-	-	-	-
TOTAL =				515.2

ENERGY COSTS TO:

ILLINOIS DEPARTMENT OF TRANSPORTATION
201 W CENTER CT
SCHAUMBURG, IL 60196

ENERGY SUPPLY: CONTACT: JOE STACHO
PHONE: (630) 424-5704
COMPANY: COMMONWEALTH EDISON
ACCOUNT NUMBER: ---



MODEL: D:\p1\... FILE: 2018-099-TS... 2019-06-01 10:00:00 AM

TS 755
EAGLE 2G

STATE OF ILLINOIS
DEPARTMENT OF TRANSPORTATION

CABLE PLAN, PHASE DESIGNATION DIAGRAM,
AND EMERGENCY VEHICLE PREEMPTION SEQUENCE
IL RTE 38 (STATE ST) AT IL RTE 25 (BENNETT ST)

F.A. RTE.	SECTION	COUNTY	TOTAL SHEETS	SHEET NO.
VAR	2018-099-TS	KANE	57	54
CONTRACT NO. 62H46				

USER NAME = plascenciai	DESIGNED - IP	REVISED - 5/30/2019
PLOT SCALE = 40.0000 ' / in.	DRAWN - IP	REVISED -
PLOT DATE = 5/30/2019	CHECKED - LP	REVISED -
	DATE - 3/15/2019	REVISED -

SCALE: SHEET OF SHEETS STA. TO STA.

ILLINOIS FED. AID PROJECT

△ LOCATION REMOVED

SCHEDULE OF QUANTITIES

ITEM DESCRIPTION	UNITS	TOTAL QTY.
UNDERGROUND CONDUIT, GALVANIZED STEEL, 2" DIA.	FOOT	73
UNDERGROUND CONDUIT, GALVANIZED STEEL, 3" DIA.	FOOT	43
HEAVY-DUTY HANDHOLE	EACH	3
MAINTENANCE OF EXISTING TRAFFIC SIGNAL INSTALLATION	EACH	1
ELECTRIC CABLE IN CONDUIT, SIGNAL NO. 14 2C	FOOT	574
ELECTRIC CABLE IN CONDUIT, SIGNAL NO. 14 3C	FOOT	950
ELECTRIC CABLE IN CONDUIT, SIGNAL NO. 14 5C	FOOT	1,470
ELECTRIC CABLE IN CONDUIT, SIGNAL NO. 14 7C	FOOT	1,195
ELECTRIC CABLE IN CONDUIT, LEAD-IN, NO. 14 1 PAIR	FOOT	560
ELECTRIC CABLE IN CONDUIT, EQUIPMENT GROUNDING CONDUCTOR, NO. 6 1C	FOOT	130
TRAFFIC SIGNAL POST, GALVANIZED STEEL 16 FT.	EACH	4
STEEL MAST ARM ASSEMBLY AND POLE, 30 FT.	EACH	1
STEEL MAST ARM ASSEMBLY AND POLE, 32 FT.	EACH	2
STEEL MAST ARM ASSEMBLY AND POLE, 38 FT.	EACH	1
CONCRETE FOUNDATION, TYPE A	FOOT	4
CONCRETE FOUNDATION, TYPE E 30-INCH DIAMETER	FOOT	54.0
DRILL EXISTING HANDHOLE	EACH	9
SIGNAL HEAD, LED, 1-FACE, 3-SECTION, MAST-ARM MOUNTED	EACH	6
SIGNAL HEAD, LED, 1-FACE, 3-SECTION, BRACKET MOUNTED	EACH	4
SIGNAL HEAD, LED, 1-FACE, 5-SECTION, BRACKET MOUNTED	EACH	4
SIGNAL HEAD, LED, 1-FACE, 5-SECTION, MAST-ARM MOUNTED	EACH	4
TRAFFIC SIGNAL BACKPLATE, LOUVERED, FORMED PLASTIC	EACH	10
DETECTOR LOOP, TYPE I	FOOT	280
PEDESTRIAN PUSH-BUTTON	EACH	8
RELOCATE EXISTING PEDESTRIAN SIGNAL HEAD	EACH	8
RELOCATE EXISTING TRAFFIC SIGNAL EQUIPMENT	EACH	1
REMOVE ELECTRIC CABLE FROM CONDUIT	FOOT	3,500
REMOVE EXISTING TRAFFIC SIGNAL EQUIPMENT	EACH	1
REMOVE EXISTING HANDHOLE	EACH	3
REMOVE EXISTING CONCRETE FOUNDATION	EACH	5
EMERGENCY VEHICLE PRIORITY SYSTEM LINE SENSOR CABLE, NO. 20 3/C	FOOT	276
REMOVE EXISTING JUNCTION BOX	EACH	3
TEMPORARY INFORMATION SIGNING	SQ FT	102.8
REMOVE AND REPLACE ANCHOR BOLTS	EACH	2
PEDESTRIAN SIGNAL POST, 10 FT.	EACH	1
CONCRETE FOUNDATION, TYPE A 10-INCH DIAMETER	FOOT	4

MODEL: Default
 FILE: \\nas105.srv.wip.design.ibm.com\ibm\08_Masafarm\Contract\62H46 - June 2019\CADD\62H46-01-01.dgn

**TS 755
EAGLE 2G**

USER NAME = plascenciai	DESIGNED - IP	REVISED - △ 5/30/2019
	DRAWN - IP	REVISED -
PLOT SCALE = 40.0000 ' / in.	CHECKED - LP	REVISED -
PLOT DATE = 5/30/2019	DATE - 3/15/2019	REVISED -

**STATE OF ILLINOIS
DEPARTMENT OF TRANSPORTATION**

**SCHEDULE OF QUANTITIES
IL RTE 38 (STATE ST) AT IL RTE 25 (BENNETT ST)**

SCALE: SHEET OF SHEETS STA. TO STA.

F.A. RTE.	SECTION	COUNTY	TOTAL SHEETS	SHEET NO.
VAR	2018-099-TS	KANE	57	55
			CONTRACT NO. 62H46	
		ILLINOIS	FED. AID PROJECT	