

06-14-2019 LETTING ITEM 029

STATE OF ILLINOIS
DEPARTMENT OF TRANSPORTATION

F.A.P. RTE.	SECTION	COUNTY	TOTAL SHEETS	SHEET NO.
573	2019-044-BP&BR	KANE	15	1
		(ILLINOIS)	CONTRACT NO. 62J22	

029

FOR INDEX OF SHEETS, SEE SHEET NO. 2

DESIGN DESIGNATION
750(40) LOCAL URBAN COLLECTOR 3.17 (HMA-20)

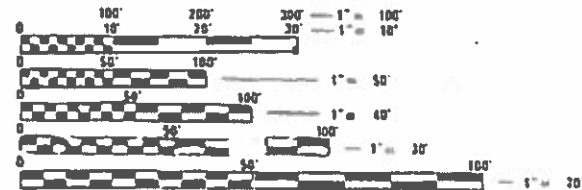
TRAFFIC DATA

ADT HANKES ROAD:	ADT IL 56:
5,200 (2011)	18,500 (2011)
21,000 (2040)	50,000 (2040)

P.V. = 97.9%	P.V. = 88.0%
S.U. = 1.7%	S.U. = 4.7%
M.U. = 0.38%	M.U. = 7.3%

SPEED LIMIT HANKES ROAD:	SPEED LIMIT IL 56:
35 / 45 MPH (POSTED)	55 MPH (POSTED)
50 MPH (DESIGN)	70 MPH (DESIGN)

PROJECT LOCATED IN SUGAR GROVE TOWNSHIP AND THE VILLAGE OF SUGAR GROVE, KANE COUNTY



FULL SIZE PLANS HAVE BEEN PREPARED USING STANDARD ENGINEERING SCALES. REDUCED SIZED PLANS WILL NOT CONFORM TO STANDARD SCALES, IN MAKING MEASUREMENTS ON REDUCED PLANS, THE ABOVE SCALES MAY BE USED.

J.U.L.I.E.
JOINT UTILITY LOCATION INFORMATION FOR EXCAVATION
1-800-892-0123
OR 811

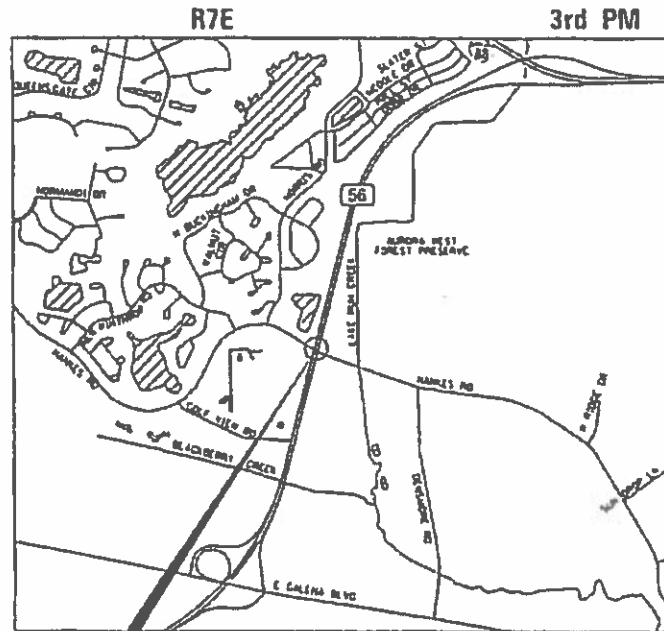
PROJECT ENGINEER: MS. ANA ABREU
PROJECT MANAGER: MS. SERIN KELLER, P.E.

CONTRACT NO. 62J22

PROPOSED HIGHWAY PLANS

FAP ROUTE 573 (IL ROUTE 56)
SECTION 2019-044-BP&BR
PROJECT: NHPP-HNW3(697)
IL ROUTE 56 AT HANKES ROAD
SHIELDING AND PAINTING
KANE COUNTY

C-91-377-19



SN 045-0081
HANKES ROAD
OVER IL RTE 56

LOCATION MAP
NOT TO SCALE

GROSS & NET LENGTH = 193.30 FT. = 0.037 MILE



JAYMIN I. PATEL
ILLINOIS REGISTERED PROFESSIONAL ENGINEER
MY LICENSE EXPIRES ON 11-30-2019.

DATE 03/20/19



STATE OF ILLINOIS
DEPARTMENT OF TRANSPORTATION

SUBMITTED March 20 2019
Anthony A. Dringley / CEB
REGIONAL ENGINEER
May 10 2019
as E.A. ETC
ENGINEER OF DESIGN AND ENVIRONMENT
May 10 2019
Paul E. Chaf
DIRECTOR OF HIGHWAYS PROJECT IMPLEMENTATION

PRINTED BY THE AUTHORITY
OF THE STATE OF ILLINOIS

REV. - MS

CONSULTING ENGINEERS

BLA, Inc.
333 PIERCE ROAD SUITE 200 ITASCA, IL 60143
P(630) 438 6400 F(630) 438 6444 www.bla.com
ILLINOIS • MISSOURI • WISCONSIN

INDEX OF SHEETS

1	COVER SHEET
2	INDEX, HIGHWAY STANDARDS, GENERAL NOTES AND COMMITMENTS
3-4	SUMMARY OF QUANTITIES
5-10	BRIDGE DETAILS - SN 045-0081
11-15	DISTRICT DETAILS

DISTRICT ONE DETAILS

TC-11	RAISED REFLECTIVE PAVEMENT MARKERS (SNOW PLOW RESISTANT)
TC-13	DISTRICT ONE TYPICAL PAVEMENT MARKINGS
TC-17	TRAFFIC CONTROL FOR FREEWAY SHOULDER CLOSURES AND PARTIAL RAMP CLOSURES
TC-22	ARTERIAL ROAD INFORMATION SIGN

HIGHWAY STANDARDS

000001-07	STANDARD SYMBOLS, ABBREVIATIONS AND PATTERNS
001006	DECIMAL OF AN INCH AND OF A FOOT
701101-05	OFF-ROAD OPERATIONS, MULTILANE, 15 FT. (4.5 m) TO 24 IN. (600 mm) FROM PAVEMENT EDGE
701106-02	OFF-ROAD OPERATIONS, MULTILANE, MORE THAN 15 FT. (4.5 m)
701301-04	LANE CLOSURE, 2L, 2W, SHORT TIME OPERATIONS
701400-09	APPROACH TO LANE CLOSURE, FREEWAY / EXPRESSWAY
701401-12	LANE CLOSURE, FREEWAY / EXPRESSWAY
701428-01	TRAFFIC CONTROL SETUP AND REMOVAL FREEWAY/EXPRESSWAY
701901-08	TRAFFIC CONTROL DEVICES
780001-05	TYPICAL PAVEMENT MARKINGS
781001-04	TYPICAL APPLICATIONS RAISED REFLECTIVE PAVEMENT MARKERS

GENERAL NOTES

- ALL CONSTRUCTION SHALL BE DONE IN ACCORDANCE WITH THE STANDARD SPECIFICATIONS FOR ROAD AND BRIDGE CONSTRUCTION ADOPTED APRIL 1, 2016 (HEREIN AFTER REFERRED TO AS THE STANDARD SPECIFICATIONS; THE SUPPLEMENTAL SPECIFICATIONS AND RECURRING SPECIAL PROVISIONS ADOPTED JANUARY 1, 2019; THE LATEST EDITION OF THE ILLINOIS MANUAL ON UNIFORM TRAFFIC CONTROL DEVICES FOR STREETS AND HIGHWAYS; THE STANDARD SPECIFICATIONS FOR WATER & SEWER MAIN CONSTRUCTION IN ILLINOIS, SEVENTH EDITION; THE DETAILS IN THE PLANS; AND THE SPECIAL PROVISIONS INCLUDED IN THE CONTRACT DOCUMENTS.
- ANY REFERENCE TO STANDARDS THROUGHOUT THE PLANS OR SPECIAL PROVISIONS SHALL BE INTERPRETED AS THE LATEST STANDARD OF THE ILLINOIS DEPARTMENT OF TRANSPORTATION.
- THE CONTRACTOR SHALL BE RESPONSIBLE FOR CONTACTING THE OWNERS OF ALL UTILITIES PRIOR TO CONSTRUCTION TO DETERMINE THE LOCATION OF ALL EXISTING AND PROPOSED UTILITY EQUIPMENT. THE CONTRACTOR SHALL COOPERATE WITH ALL UTILITY OWNERS AS PROVIDED FOR IN THE STANDARD SPECIFICATIONS, IF UTILITY RELOCATION, ADJUSTMENT, OR PROTECTION IS NECESSARY.
- BEFORE STARTING ANY EXCAVATION, THE CONTRACTOR SHALL CALL "J.U.L.I.E." AT (800) 892-0123 OR 811 FOR FIELD LOCATIONS OF BURIED ELECTRIC, TELEPHONE AND GAS UTILITIES. 48 HOURS NOTIFICATION IS REQUIRED.
- THE CONTRACTOR SHALL COORDINATE CONSTRUCTION ACTIVITIES WITH UTILITY COMPANIES, THE VILLAGE, AND WITH LOCAL EMERGENCY SERVICES.
- THE CONTRACTOR WILL NOT BE ALLOWED TO SET UP A YARD OR FIELD OFFICE ON STATE PROPERTY WITHOUT WRITTEN PERMISSION FROM THE DEPARTMENT.
- WHEN ARTIFICIAL LIGHTING IS UTILIZED IN NIGHT OPERATIONS THE CONTRACTOR SHALL EXERCISE THE UTMOST PRECAUTIONS IN PREVENTING ADVERSE VISIBILITY TO THE MOTORING PUBLIC AND ADJOINING RESIDENTIAL AREAS.
- THE RESIDENT ENGINEER SHALL CONTACT THE AREA TRAFFIC FIELD ENGINEER MR. DON CHIARUGI AT DON.CHIARUGI@ILLINOIS.GOV A MINIMUM OF 2 WEEKS PRIOR TO PLACEMENT OF PERMANENT PAVEMENT MARKINGS.
- THE RESIDENT ENGINEER SHALL CONTACT THE ARTERIAL TRAFFIC CONTROL SUPERVISOR AT (847) 705-4470 A MINIMUM OF 72 HOURS PRIOR TO THE PLACEMENT OF ANY TEMPORARY TRAFFIC CONTROL DEVICES.
- DO NOT SCALE PLANS FOR CONSTRUCTION DIMENSIONS.
- THE CONTRACTOR SHALL BE RESPONSIBLE FOR ANY MEASUREMENTS NEEDED BEFORE THE ORDERING OF MATERIALS. ANY VARIATIONS FROM THE PLANS ARE NOT THE RESPONSIBILITY OF THE DEPARTMENT AND NO ADDITIONAL COMPENSATION WILL BE AWARDED.
- THE CONTRACTOR SHALL TAKE CARE IN REMOVING OR EXCAVATING NEAR ALL EXISTING ITEMS WHICH WILL REMAIN. ANY DAMAGE DONE TO EXISTING ITEMS BY THE CONTRACTOR SHALL BE REPAIRED AT THE CONTRACTOR'S EXPENSE. ANYTHING DISTURBED OUTSIDE THE PROJECT LIMITS IS THE CONTRACTOR'S RESPONSIBILITY AND SHALL BE REPLACED IN KIND. NO ADDITIONAL COMPENSATION WILL BE AWARDED.
- THE CONTRACTOR SHALL OBTAIN ALL NECESSARY PERMITS, AS REQUIRED, PRIOR TO COMMENCING WITH CONSTRUCTION. ANY COST ASSOCIATED WITH OBTAINING THESE PERMITS SHALL BE CONSIDERED INCLUDED IN THE CONTRACT UNIT PRICE FOR THE ITEMS BEING INSTALLED.
- NO WORK SHALL COMMENCE UNTIL TRAFFIC CONTROL REQUIREMENTS ARE MET.
- THE COST OF SAW CUTTING PRIOR TO THE REMOVAL OF ANY ITEM NOTED ON THE PLAN OR AS DIRECTED BY THE ENGINEER, (FULL DEPTH) SHALL BE INCLUDED IN THE UNIT PRICES FOR THE VARIOUS REMOVAL PAY ITEMS.
- THE CONTRACTOR SHALL COORDINATE WITH THE VILLAGE OF SUGAR GROVE IN COMPLIANCE WITH LOCAL ORDINANCES.
- THE CONTRACTOR SHALL SUBMIT TO THE ENGINEER A SATISFACTORY PROGRESS SCHEDULE AND CRITICAL PATH SCHEDULE WHICH SHALL SHOW THE PROPOSED SEQUENCE OF WORK AT THE TIME OF THE PRE-CONSTRUCTION CONFERENCE.
- ALL ELEVATIONS ARE ON THE U.S.G.S. DATUM NAVD 88.
- ALL OFFSET LOCATIONS GIVEN ON THE DETAILED PLANS FOR STRUCTURES, BACKS OF CURB, ETC. ARE FROM THE CENTERLINE AS SHOWN ON THE PLANS.
- THE CONTRACTOR SHALL BE RESPONSIBLE FOR PROTECTING FRESH CONCRETE FROM DAMAGE AND VANDALISM. ANY DAMAGED OR VANDALIZED CONCRETE SHALL BE REMOVED AND REPLACED AT THE CONTRACTOR'S EXPENSE.
- ALL DISTURBED AREAS WITHIN THE PROJECT THAT ARE NOT OTHERWISE SURFACED SHALL BE CLEANED, LAYERED WITH TOPSOIL, AND SEEDED AS SHOWN ON THE PLANS.

GENERAL PAINT NOTES

- CLEANING AND PAINTING OF THE EXISTING STRUCTURAL STEEL SHALL BE AS SPECIFIED IN THE SPECIAL PROVISIONS FOR "CLEANING AND PAINTING EXISTING STEEL STRUCTURES."
- ALL ITEMS (SUCH AS, BUT NOT LIMITED TO: CONDUITS, BRACKETS AND DECK DRAINS) ATTACHED TO THE OUTSIDE OF THE FASCIA BEAMS SHOULD BE CLEANED AND PAINTED.
- ALL BEAMS, BEARINGS, AND OTHER STRUCTURAL STEEL WITHIN FIVE (5) FT. (MEASURED ALONG THE BEAM) OF EITHER SIDE OF ALL DECK JOINTS SHALL BE CLEANED PER NEAR WHITE BLAST CLEANING SSPC-SP10. THE EXTERIOR SURFACES AND TOP AND BOTTOM OF THE BOTTOM FLANGE OF THE FASCIA BEAMS SHALL BE CLEANED PER NEAR WHITE BLAST CLEANING SSPC-SP10.
 - THESE AREAS SHALL BE PAINTED ACCORDING TO THE REQUIREMENTS OF PAINT SYSTEM 1 -0Z/E/U. THE COLOR OF THE FINAL FINISH COAT FOR ALL INTERIOR STEEL SURFACES SHALL BE GRAY, MUNSELL NO 5B 7/1. THE COLOR OF THE FINAL FINISH COAT FOR THE EXTERIOR AND BOTTOM FLANGE OF THE FASCIA BEAMS SHALL BE REDDISH BROWN, MUNSELL NO 2, 5YR 3/4.
- A MINIMUM OF TWO (2) AIR MONITORS WILL BE REQUIRED TO MONITOR ABRASIVE BLASTING OPERATIONS. SEE SPECIAL PROVISIONS FOR "CONTAINMENT AND DISPOSAL OF LEAD PAINT CLEANING RESIDUES."

HOT-MIX ASPHALT MIXTURE REQUIREMENTS CHART

MIXTURE TYPE	AIR VOIDS @ N _{DES}	OMP
OVERLAY		
HMA SURFACE COURSE, MIX "D", N50 (IL-9.5mm), 1 3/4"	4% @ 50 GYR.	OC/OA
OMP DESIGNATION: QUALITY CONTROL/QUALITY ASSURANCE (OC/OA)		

NOTES:

- THE UNIT WEIGHT USED TO CALCULATE ALL HOT-MIX ASPHALT SURFACE MIXTURE QUANTITIES IS 112 LBS/SQ YD/IN.
- THE AC TYPE FOR POLYMERIZED HMA MIXES SHALL BE SBS/SBR PG 76-22 AND FOR NON-POLYMERIZED HMA THE AC TYPE SHALL BE PG 64-22 UNLESS MODIFIED BY DISTRICT ONE SPECIAL PROVISIONS. FOR THE USE OF RECYCLED MATERIALS SEE DISTRICT ONE SPECIAL PROVISIONS.
- QUALITY MANAGEMENT PROGRAM (OMP) IDENTIFIES THE PARTICULAR QUALITY CONTROL SPECIFICATION THAT APPLIES TO THE HMA MIXTURE.



USER NAME = WTeng	DESIGNED - MTC	REVISED -
	DRAWN - MTC	REVISED -
PLOT SCALE = 100.0000' / in.	CHECKED - JIP	REVISED -
PLOT DATE = 3/22/2019	DATE - 03/22/2019	REVISED -

STATE OF ILLINOIS
DEPARTMENT OF TRANSPORTATION

IL ROUTE 56 AT HANKES RD
INDEX, HIGHWAY STANDARDS, AND GENERAL NOTES

SCALE: N.T.S. SHEET 1 OF 2 SHEETS STA. N/A TO STA. N/A

F.A.P. RTE.	SECTION	COUNTY	TOTAL SHEETS	SHEET NO.
573	2019-044-BP&BR	KANE	15	2
				CONTRACT NO. 62J22
ILLINOIS FED. AID PROJECT				

URBAN
80% FED
20% STATE

CONSTRUCTION CODE

CODE NO.	ITEM	UNIT	TOTAL QUANTITY	BRIDGE
				0047 S. N: 045-0081
21101625	TOPSOIL FURNISH AND PLACE, 6"	SQ YD	7	7
25100635	HEAVY DUTY EROSION CONTROL BLANKET	SQ YD	7	7
40600985	PORTLAND CEMENT CONCRETE SURFACE REMOVAL - BUTT JOINT	SQ YD	25	25
40603335	HOT-MIX ASPHALT SURFACE COURSE, MIX "D", N50	TON	58	58
40800029	BITUMINOUS MATERIALS (TACK COAT)	POUND	266	266
Z0010501	CLEANING AND PAINTING STEEL BRIDGE NO. 1	L SUM	1	1
58600101	GRANULAR BACKFILL FOR STRUCTURES	CU YD	69	69
67000400	ENGINEER'S FIELD OFFICE, TYPE A	CAL MO	4	4
67100100	MOBILIZATION	L SUM	1	1
70100205	TRAFFIC CONTROL AND PROTECTION, STANDARD 701401	EACH	2	2
* 78000200	THERMOPLASTIC PAVEMENT MARKING - LINE 4"	FOOT	1040	1040
* 78100300	REPLACEMENT REFLECTOR	EACH	28	28
78300200	RAISED REFLECTIVE PAVEMENT MARKER REMOVAL	EACH	28	28
X0327980	PAVEMENT MARKING REMOVAL - WATER BLASTING	SQ FT	94	94

* SPECIALTY ITEM

REV. - MS

URBAN
80% FED
20% STATE

CONSTRUCTION CODE

CODE NO.	ITEM	UNIT	TOTAL QUANTITY	CONSTRUCTION CODE	
				BRIDGE 0047	S. N: 045-0081
X5017305	PROTECTIVE SHIELD (PERMANENT)	SQ YD	220		220
Z0007112	CONTAINMENT AND DISPOSAL OF LEAD PAINT CLEANING RESIDUES	L SUM	1		1
Z0065700	SLOPE WALL REPAIR	SQ YD	60		60
X2300021	BRIDGE RAILING ERECTION	FOOT	25		25

* SPECIALTY ITEM

REV. - MS



USER NAME = wteng	DESIGNED - MTC	REVISED -
PLOT SCALE = 100.0000' / 1in.	DRAWN - MTC	REVISED -
PLOT DATE = 3/22/2019	CHECKED - JIP	REVISED -
	DATE - 03/22/2019	REVISED -

STATE OF ILLINOIS
DEPARTMENT OF TRANSPORTATION

IL ROUTE 56 AT HANKES RD
SUMMARY OF QUANTITIES

SCALE: N.T.S. SHEET 2 OF 2 SHEETS STA. N/A TO STA. N/A

F.A.P RTE.	SECTION	COUNTY	TOTAL SHEETS	SHEET NO.
573	2019-044-BP&BR	KANE	15	4
				CONTRACT NO. 62J22
ILLINOIS FED. AID PROJECT				

GENERAL NOTES

Traffic on Hanks Road shall be maintained using stage construction with one lane open to traffic. Traffic on IL 56 shall be maintained using daytime closures.

Construction of butt joints, tack coat, and HMA overlay on the Hanks Road bridge shall be completed in one day for each stage of construction.

The area of existing broken concrete debris along the north edge of the existing east slope wall shall be removed and disposed of. The area will not be measured for payment. Cost shall be included in Slope Wall Repair.

Plan dimensions and details relative to existing plans are subject to nominal construction variations. The Contractor shall field verify existing dimensions and details affecting new construction and make necessary approved adjustments prior to construction or ordering of materials. Such variations shall not be cause for additional compensation for a change in scope of the work, however, the Contractor will be paid for the quantity actually furnished at the unit price bid for the work.

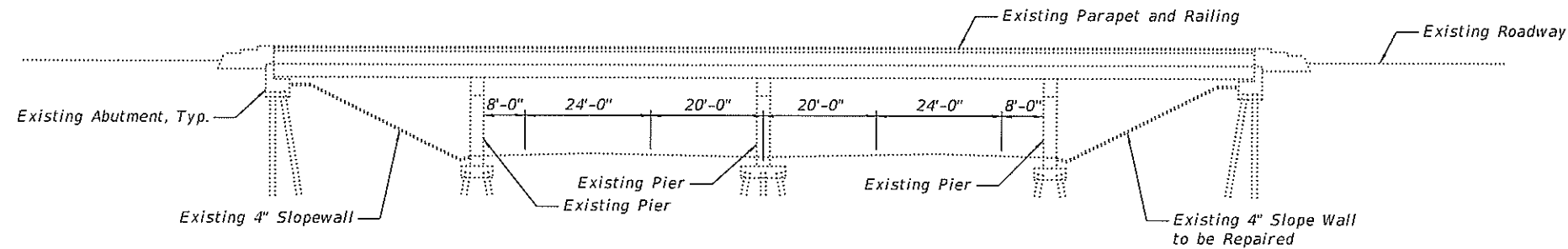
The existing structural steel coating contains lead. The Contractor shall take appropriate precautions to deal with the presence of lead on this project.

Existing structural steel that will be in contact with new structural steel shall be cleaned and painted prior to erection as required by the special provision "Cleaning and Painting Contact Surface Areas of Existing Steel Structures".

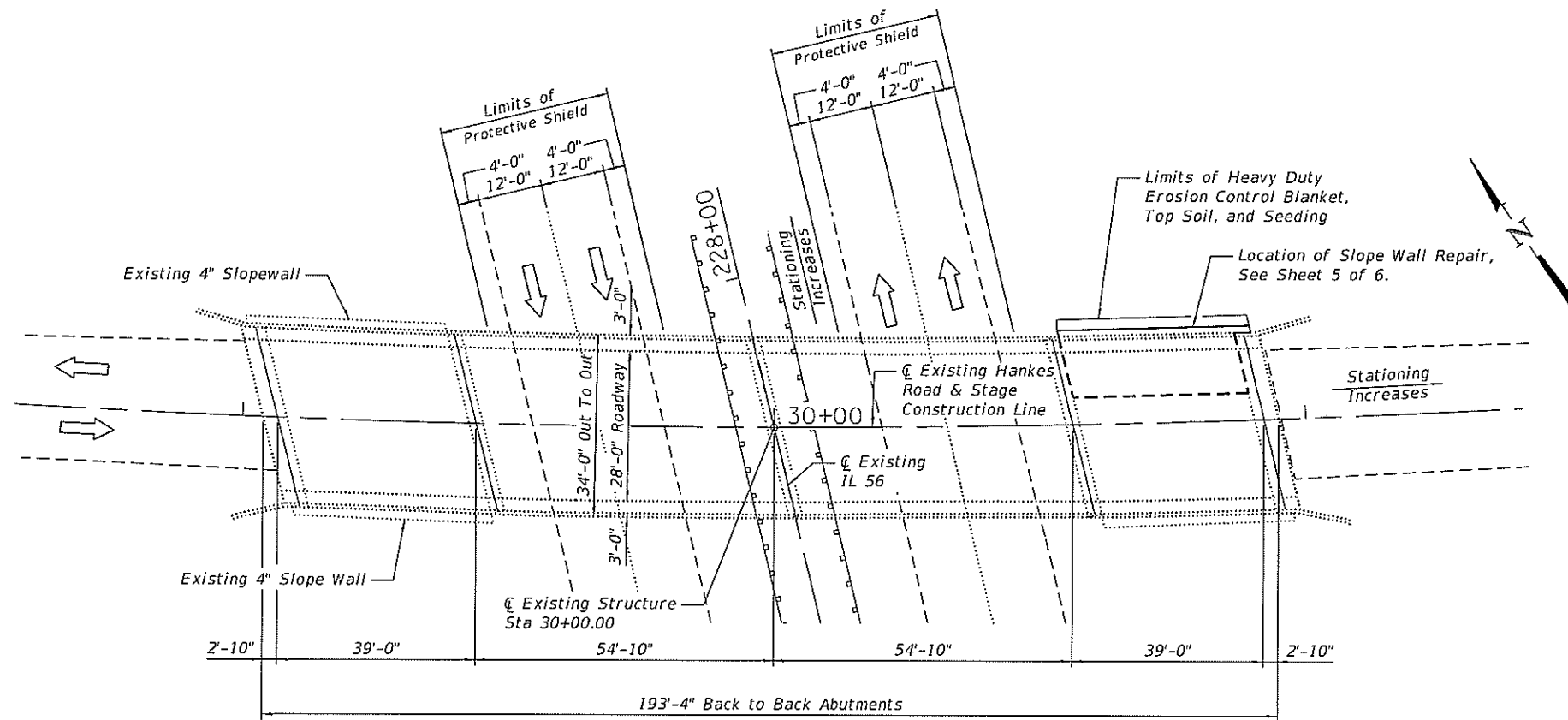
Cleaning and painting of the existing structural steel shall be as specified in the special provision for "Cleaning and Painting Existing Steel Structures". Areas to be painted shall consist of all beam ends, end diaphragms, and all existing structural steel for 5 feet from the end of each beam at each abutment. Also included in the areas to be painted is the entire surface of the fascia beams. The designated areas to be painted shall be cleaned per Near White Blast Cleaning - SSPC-SP 10 and shall be painted according to the requirements of Paint System 1 - OZ/E/U. The color of the final finish coat for all areas shall be Reddish Brown Munsell No. 2.5 YR 3/4

Containment and disposal as specified shall follow the special provision for "Containment and Disposal of Lead Paint Blast Residue". A minimum of two air monitors shall be used for this project. The SSPC-QP1 and SSPC-QP2 painting Contractor certifications will be required.

See sheet 3 of 6 for existing structural steel details.



ELEVATION



PLAN

SCOPE OF WORK

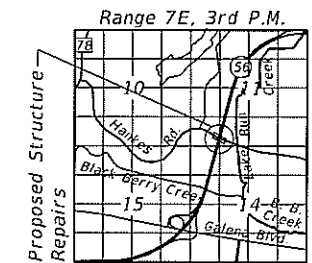
1. Construct HMA bridge deck overlay using stage construction.
2. Repair existing east slope wall.
3. Clean and paint fascia beams and 5 feet at each end of all beams.
4. Install permanent protective shield.
5. Replace missing railing section on southeast side of bridge.

INDEX OF SHEETS

1. General Plan & Elevation
2. Deck Overlay Plan and Details
3. Permanent Protective Shield Plan
4. Permanent Protective Shield Details
5. Slope Wall Repair Details
6. Existing Railing Details

TOTAL BILL OF MATERIAL

ITEM	UNIT	TOTAL
Portland Cement Concrete Surface Removal - Butt Joint	Sq. Yd.	25
Hot-Mix Asphalt Surface Course, Mix "D", N50	Ton	58
Bituminous Materials (Tack Coat)	Pound	266
Cleaning and Painting STEEL BRIDGE Location 1	L.S.	1
Granular Backfill for Structures	Cu. Yd.	69
Protective Shield (Permanent)	Sq. Yd.	220
Containment and Disposal of Lead Paint Cleaning Residues	L.S.	1
Slope Wall Repair	Sq. Yd.	60
Bridge Railing Erection	Foot	25



LOCATION SKETCH

GENERAL PLAN & ELEVATION

HANKS ROAD OVER

ILLINOIS ROUTE 56

F.A.P. 573 SECTION 2019-044-BP&BR

KANE COUNTY

STATION 30+00.00

STRUCTURE NO. 045-0081



J. D. Ash

DATE SIGNED: 03-15-2019
EXP. DATE: 11-30-2019



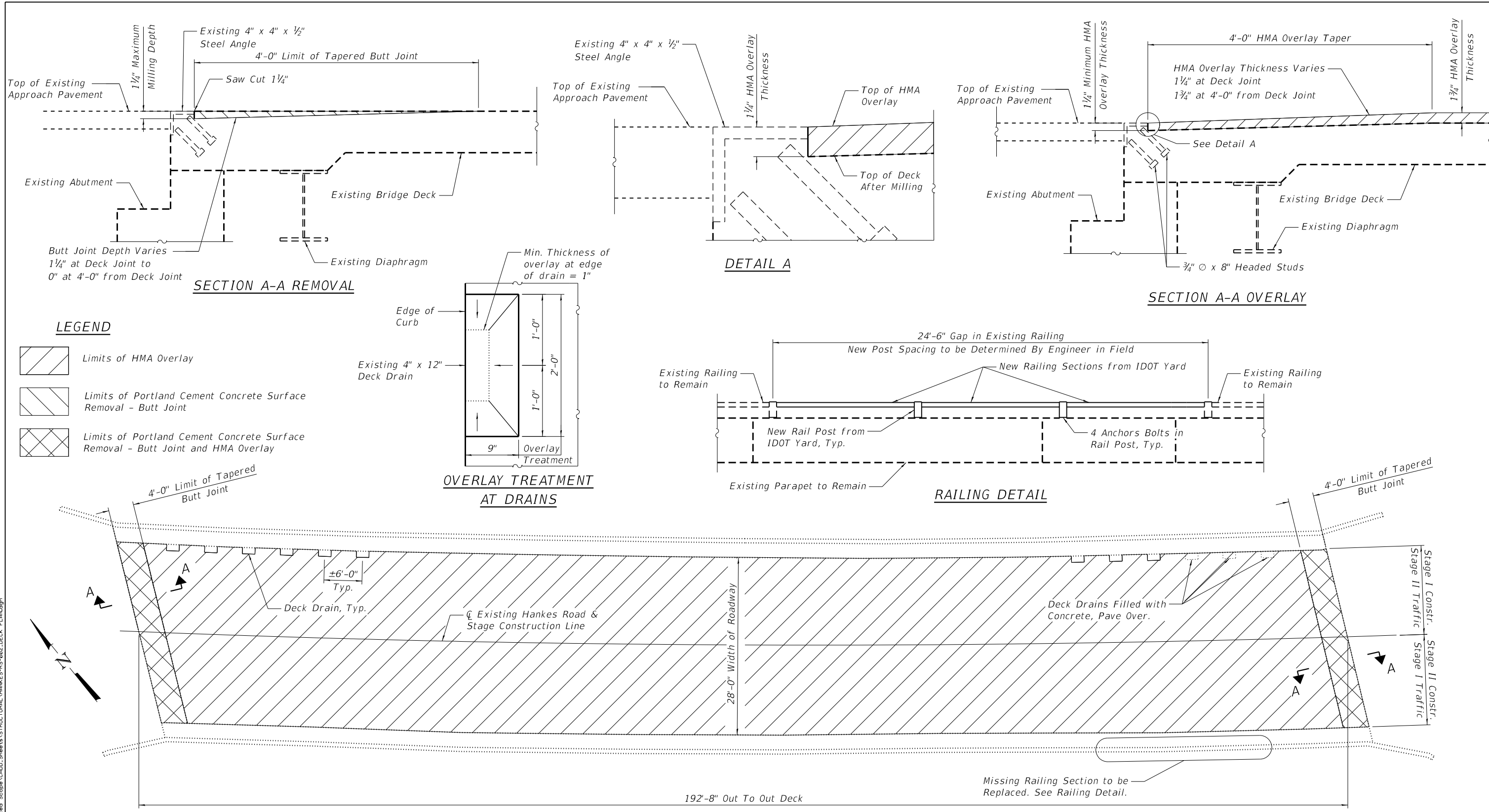
USER NAME =	DESIGNED - HB	REVISED -
	CHECKED - JJI	REVISED -
PLOT SCALE =	DRAWN - HB	REVISED -
PLOT DATE = 3/22/2019	CHECKED - JJI	REVISED -

**STATE OF ILLINOIS
DEPARTMENT OF TRANSPORTATION**

SHEET 1 OF 6 SHEETS

F.A.P. RTE.	SECTION	COUNTY	TOTAL SHEETS	SHEET NO.
573	2019-044-BP&BR	Kane	15	5
			CONTRACT NO. 62J22	
ILLINOIS FED. AID PROJECT				

FILE NAME = M:\191-144 IDOT IL 56 at Hanks Road\Struct\Struct\HANKES-RS-001.dwg



LEGEND

- Limits of HMA Overlay
- Limits of Portland Cement Concrete Surface Removal - Butt Joint
- Limits of Portland Cement Concrete Surface Removal - Butt Joint and HMA Overlay

Notes:
 All loose material on the bridge deck and sidewalks, including loose cold patch material, shall be cleaned off to the satisfaction of the Engineer prior to the application of tack coat. Cost of cleaning the bridge deck is included in Bituminous Materials (Tack Coat).
 The salvaged bridge railing to be erected in place of the missing section on the southeast side of the bridge shall be obtained from IDOT's District Bridge Yard at the following address:
 1101 Biesterfield Road, Elk Grove Village, IL 60007
 9:00am to 3:00pm. Contact: Mr. John Bilski, 847-956-1444
 Cost to be included with Bridge Railing Erection.
 See special provision for Bridge Railing Erection.
 See sheet 6 of 6 for existing railing details.

BILL OF MATERIAL

ITEM	UNIT	TOTAL
Portland Cement Concrete Surface Removal - Butt Joint	Sq. Yd.	25
Hot-Mix Asphalt Surface Course, Mix "D", N50	Ton	58
Bituminous Materials (Tack Coat)	Pound	266
Bridge Railing Erection	Foot	25

FILE NAME = W:\191-144 IDOT IL 56 at Hanks Rd\Reduced Scope\CADD_Sheets\STRUCTURAL\HANKES-RS-002_DECK_PLAN.dgn



USER NAME =	DESIGNED - HB	REVISED -
	CHECKED - JJI	REVISED -
PLOT SCALE =	DRAWN - HB	REVISED -
PLOT DATE = 3/22/2019	CHECKED - JJI	REVISED -

**STATE OF ILLINOIS
 DEPARTMENT OF TRANSPORTATION**

**DECK OVERLAY PLAN AND DETAILS
 STRUCTURE NO. 045-0081**

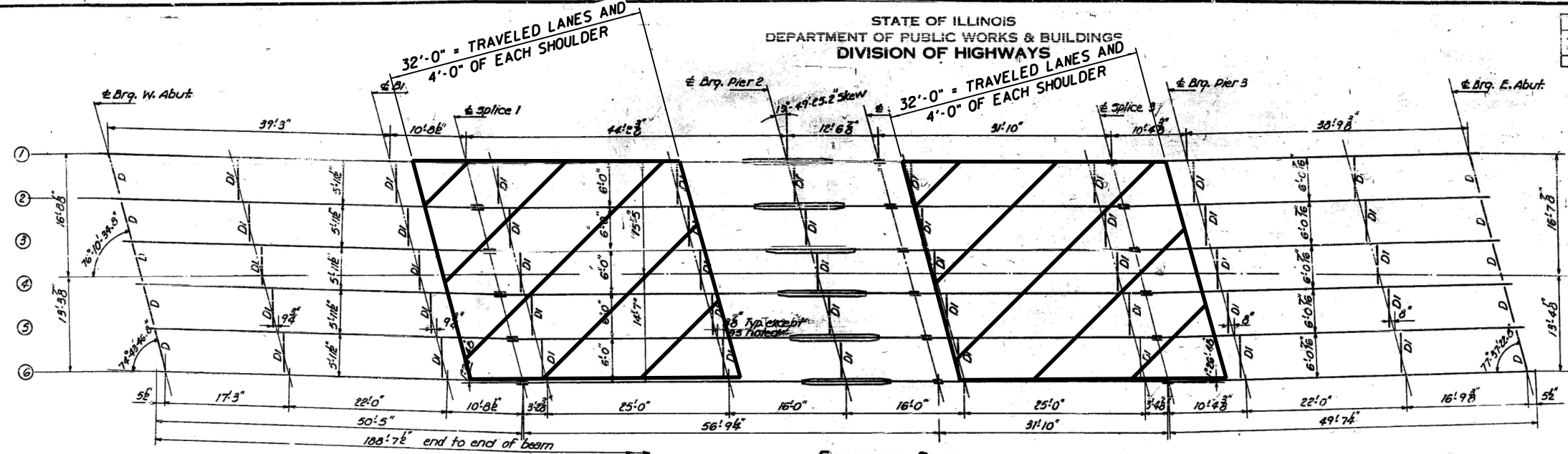
SHEET 2 OF 6 SHEETS

F.A.P. RTE.	SECTION	COUNTY	TOTAL SHEETS	SHEET NO.
573	2019-044-BP&BR	Kane	15	6
CONTRACT NO. 62J22				

ILLINOIS FED. AID PROJECT

STATE OF ILLINOIS
DEPARTMENT OF PUBLIC WORKS & BUILDINGS
DIVISION OF HIGHWAYS

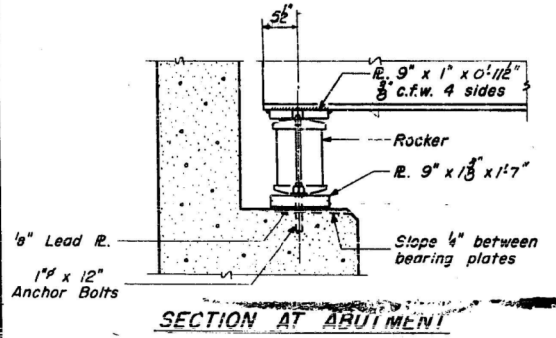
ROUTE NO.	SECTION	COUNTY	DATE	SHEET NO.
131	61MB	KANE	25 12	4
SHEETS				



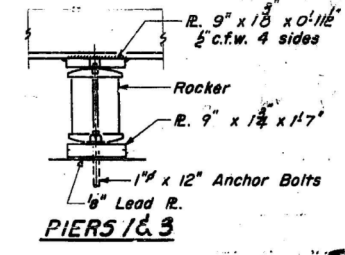
FRAMING PLAN
All beams 30 W-99

All Horizontal Dimensions are taken along \pm Brn.

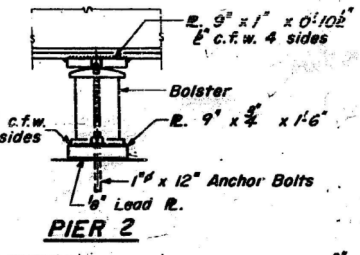
HATCHED AREA INDICATES PERMANENT PROTECTIVE SHIELD



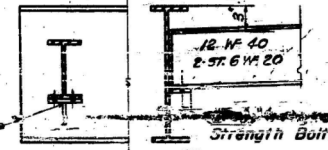
SECTION AT ABUTMENT



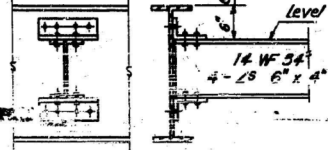
PIERS 1 & 3



PIER 2



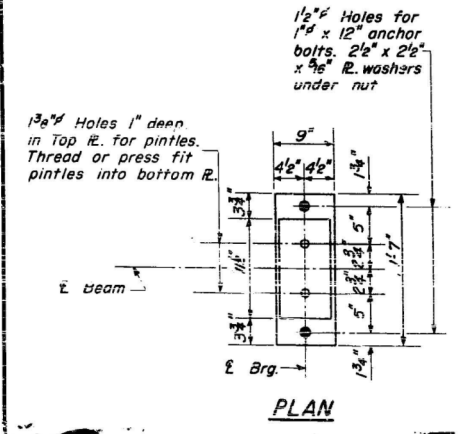
DIAPHRAGM D
10 Required



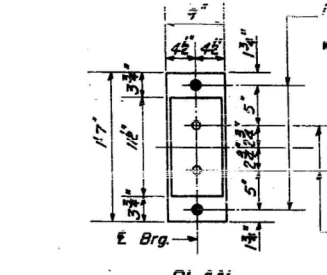
DIAPHRAGM D1
45 Required

ELEVATION TOP OF WF
For Fabrication only

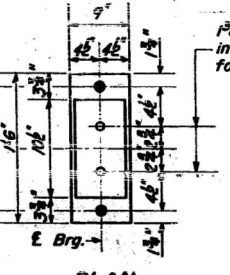
Local Beams	± Brg. W. Abut.	± Brg. Pier 1	± Brg. Pier 2	± Brg. Pier 3	± Brg. E. Abut.
1	693.34	693.43	693.43	693.43	693.32
2	693.64	693.73	693.73	693.73	693.66
3	693.74	694.03	694.03	694.03	693.96
4	694.24	694.33	694.33	694.33	694.26
5	694.54	694.63	694.63	694.63	694.56
6	694.04	694.93	694.93	694.93	694.86



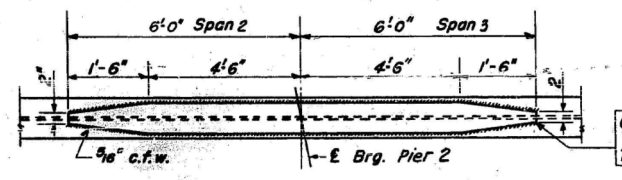
PLAN



PLAN



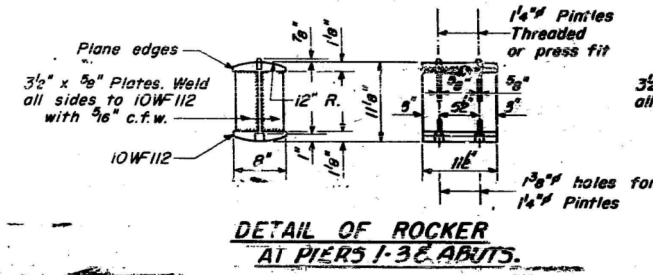
PLAN



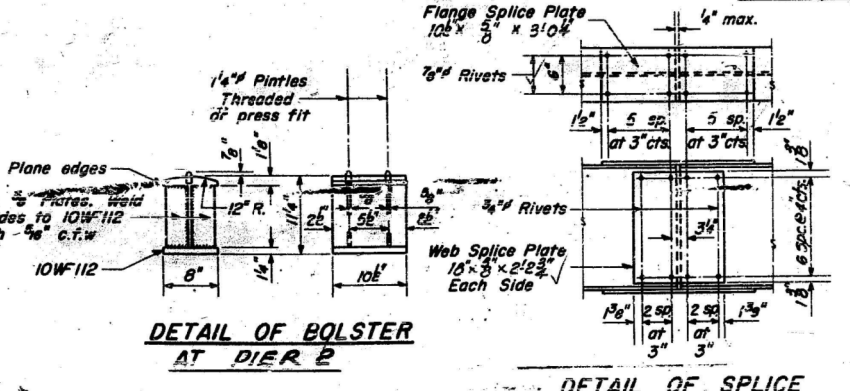
DETAIL OF COVER PLATE

DESIGNED	T. M. Young
CHECKED	W. A. Sausaman Jr.
DRAWN	W. A. Sausaman Jr.
CHECKED	W. A. Sausaman Jr.

EXAMINED	MAY 21 1963 W. E. Beermann ENGINEER OF BRIDGE AND TRAFFIC STRUCTURES
PASSED	E. J. Schmitt ENGINEER
APPROVED	



DETAIL OF ROCKER AT PIERS 1, 3 & ABUTS.



DETAIL OF BOLSTER AT PIER 2

DETAIL OF SPLICE

STRUCTURAL STEEL
E.A. R. 131 - SEC. 61MB
KANE COUNTY
STAFFORD

FILE NAME = W:\191-144 IDOT IL 56 at Hankes Rd\Reduced Scope\CADD Sheets\STRUCTURAL\HANKES-RS-003.PROTECTIVE_SHIELD.dgn



USER NAME =	DESIGNED - HB
PLOT SCALE =	CHECKED - JUI
PLOT DATE = 3/22/2019	DRAWN - HB
	CHECKED - JUI

DESIGNED - HB	REVISED -
CHECKED - JUI	REVISED -
DRAWN - HB	REVISED -
CHECKED - JUI	REVISED -

STATE OF ILLINOIS
DEPARTMENT OF TRANSPORTATION

PERMANENT PROTECTIVE SHIELD PLAN
STRUCTURE NO. 045-0081

SHEET 3 OF 6 SHEETS

F.A.P. RTE.	SECTION	COUNTY	TOTAL SHEETS	SHEET NO.
573	2019-044-BP&BR	Kane	15	7
CONTRACT NO. 62J22				

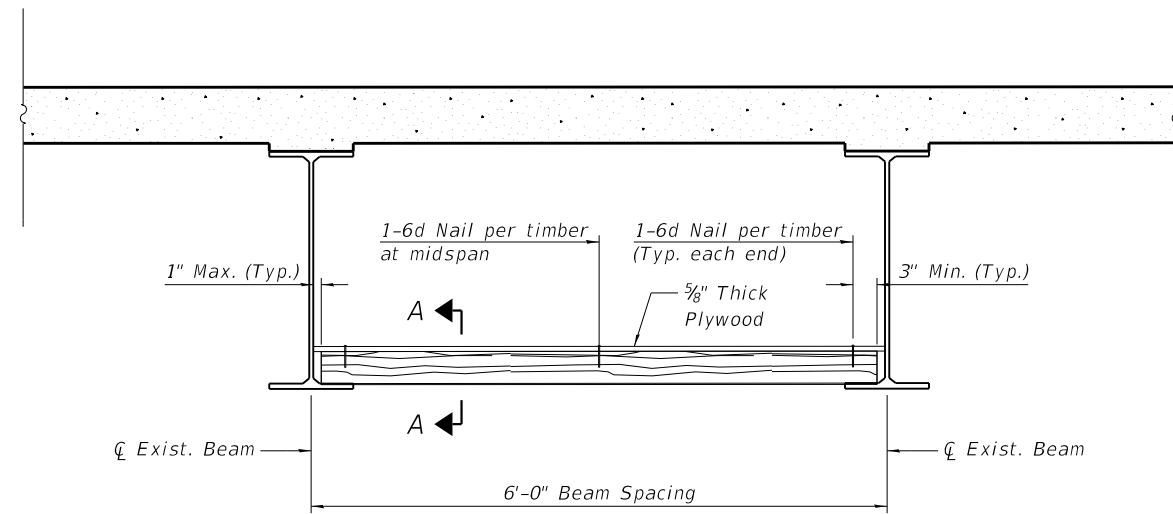
ILLINOIS FED. AID PROJECT

TIMBER SPACING

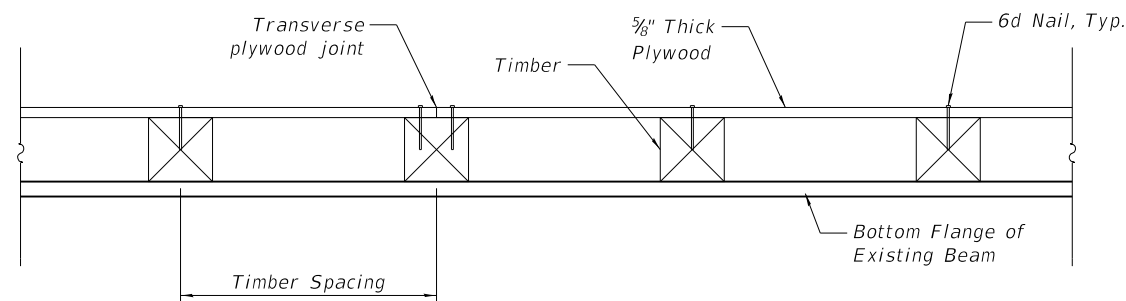
Beam Spacing (ft.)	Timber Sizes (in.)		
	4" x 4" with min. Fb=775 psi Fv=135 psi	4" x 6" with min. Fb=775 psi Fv=135 psi	6" x 6" with min. Fb=575 psi Fv=125 psi
	Maximum Timber Spacing (in.)		
4.5	16	16	16
4.75	16	16	16
5.0	16	16	16
5.25	16	16	16
5.75	16	16	16
6.0	16	16	16
6.25	12	16	16
6.5	12	16	16
6.75	12	16	16
7.0	8	16	16
7.25	8	16	16
7.5	8	16	16
7.75	8	16	16
8.0	8	12	16
8.25	8	12	16
8.5	6	12	12
8.75	6	12	12
9.0	6	8	12

BILL OF MATERIAL

ITEM	UNIT	TOTAL
Protective Shield (Permanent)	Sq. Yd.	183



TYPICAL SECTION THRU BAY



SECTION A-A

NOTES

- See special provision for Permanent Protective Shield System.
- Timber sizes shown are nominal sizes. Rough sawn timber of the dimensions shown will also be considered acceptable.
- The minimum Fb and Fv values shown are the tabulated design values given in the National Design Specification for Wood Construction for No. 2 Spruce-Pine-Fir without adjustment factors applied. Better grades or other species with equal or higher allowable stresses will also be considered acceptable.
- The timber spacings shown have been determined using allowable stresses with all adjustment factors necessary for the anticipated service conditions.
- All timber shall be treated.
- Plywood shall be 5/8 " Exterior type plywood.
- Plywood shall be placed such that the face grain is perpendicular to the timber supports. When less than a full sheet (4' width) of plywood is used, the width of the strip used shall not be less than 2'.
- Transverse plywood joints shall be supported by timbers.
- When 4" x 6" timbers are used, they shall be placed such that the wide face is horizontal and the narrow face is vertical.
- Design load = 200 psf.

FILE NAME = W:\191-144 IDOT IL 56 at Hankes Rd\Reduced Scope\CADD_Sheets\STRUCTURAL\HANKES-RS-004_PROTECTIVE_SHIELD_DETAIL.dgn



USER NAME =	DESIGNED - HB	REVISED -
	CHECKED - JJI	REVISED -
PLOT SCALE =	DRAWN - HB	REVISED -
PLOT DATE = 3/22/2019	CHECKED - JJI	REVISED -

**STATE OF ILLINOIS
DEPARTMENT OF TRANSPORTATION**

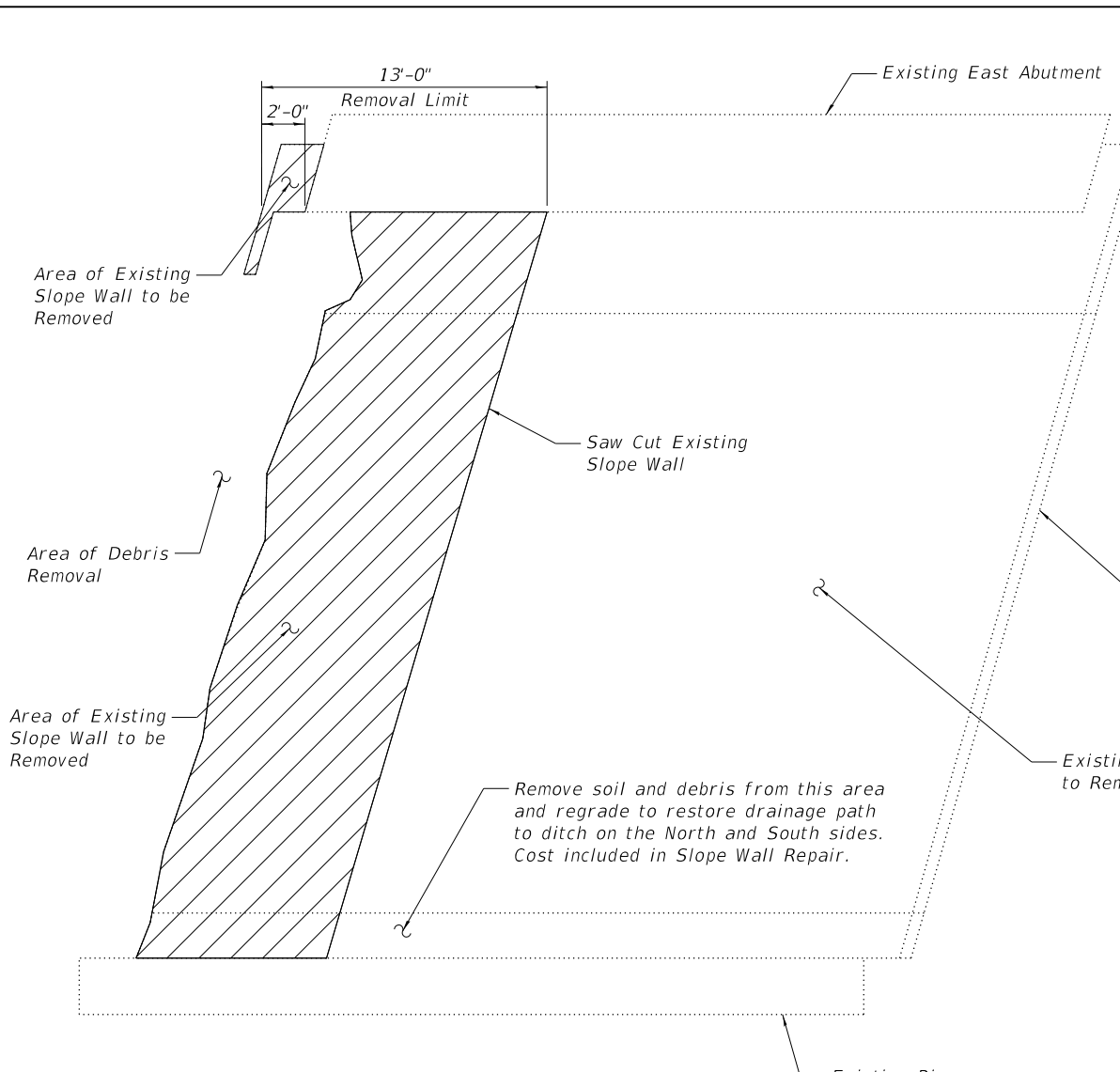
**PERMANENT PROTECTIVE SHIELD DETAILS
STRUCTURE NO. 045-0081**

SHEET 4 OF 6 SHEETS

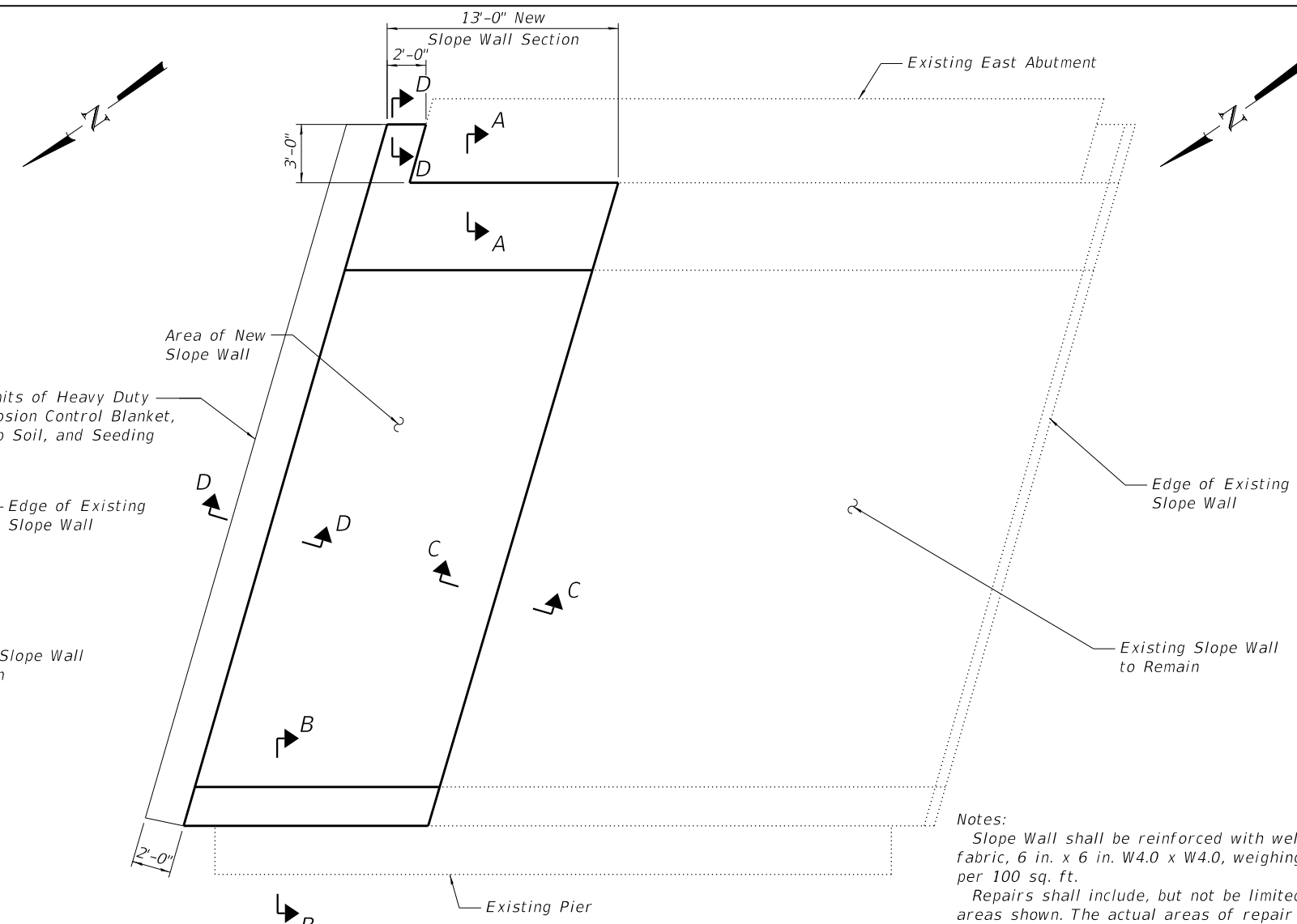
F.A.P. RTE.	SECTION	COUNTY	TOTAL SHEETS	SHEET NO.
573	2019-044-BP&BR	Kane	15	8
				CONTRACT NO. 62J22

ILLINOIS FED. AID PROJECT

FILE NAME = W:\191-144 IDOT IL 56 at Hankes Rd\Reduced Scope\CADD\Sheets\STRUCTURAL\HANKES-RS-005_SLOPEWALL_REPAIRS.dgn



**EAST SLOPEWALL
REMOVAL PLAN**

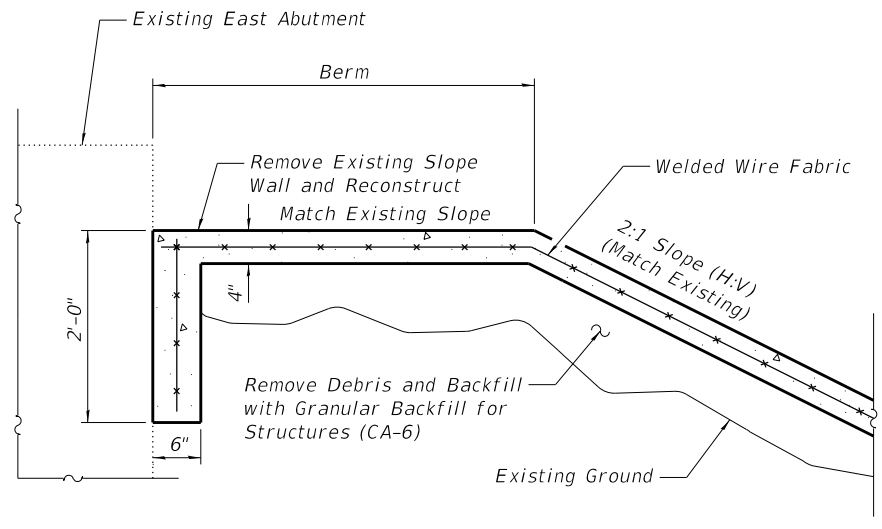


**EAST SLOPEWALL
PLAN**

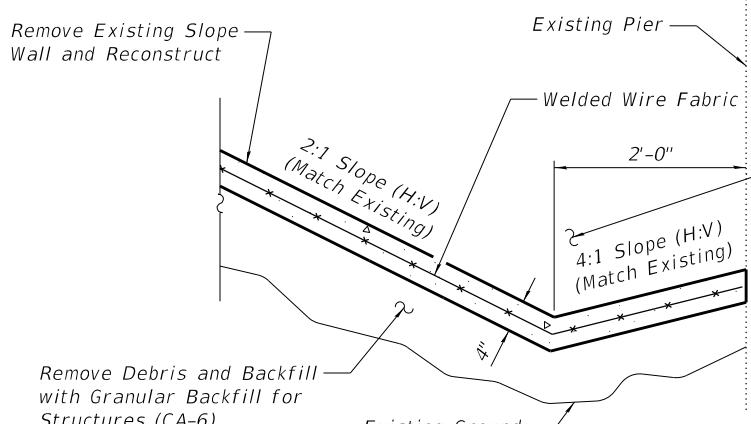
Notes:
Slope Wall shall be reinforced with welded wire fabric, 6 in. x 6 in. W4.0 x W4.0, weighing 58 lbs. per 100 sq. ft.
Repairs shall include, but not be limited to the areas shown. The actual areas of repair shall be determined by the Engineer at the time of construction.
Granular Backfill for Structures shall be CA-6.

BILL OF MATERIAL

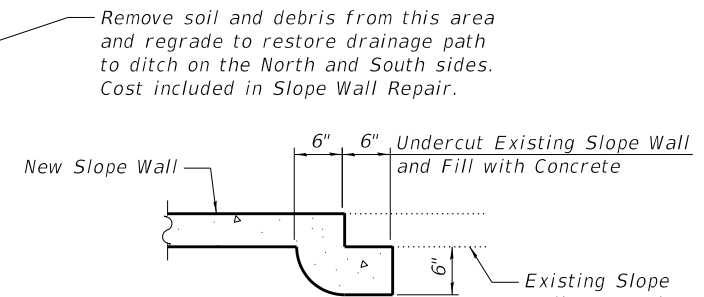
ITEM	UNIT	TOTAL
Granular Backfill for Structures	Cu. Yd.	69
Slope Wall Repair	Sq. Yd.	60



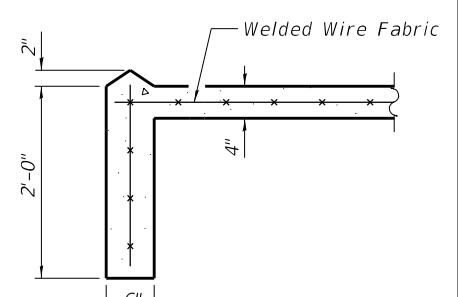
SECTION A-A



SECTION B-B



SECTION C-C



SECTION D-D



USER NAME =	DESIGNED - HB	REVISED -
	CHECKED - JJI	REVISED -
PLOT SCALE =	DRAWN - HB	REVISED -
PLOT DATE = 3/22/2019	CHECKED - JJI	REVISED -

**STATE OF ILLINOIS
DEPARTMENT OF TRANSPORTATION**

**SLOPE WALL REPAIR DETAILS
STRUCTURE NO. 045-0081**

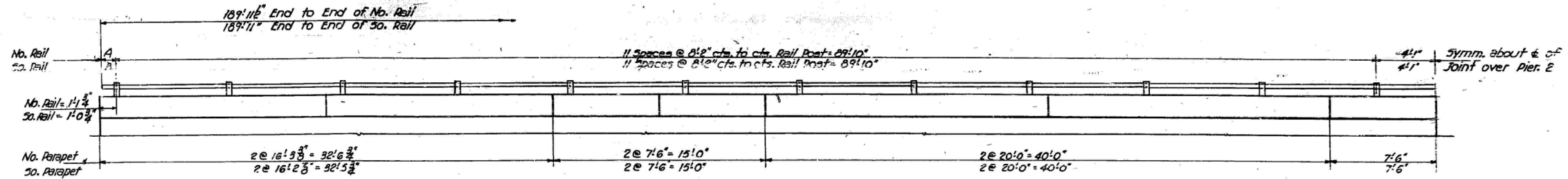
SHEET 5 OF 6 SHEETS

F.A.P. RTE.	SECTION	COUNTY	TOTAL SHEETS	SHEET NO.
573	2019-044-BP&BR	Kane	15	9
CONTRACT NO. 62J22				

ILLINOIS FED. AID PROJECT

STATE OF ILLINOIS
DEPARTMENT OF PUBLIC WORKS & BUILDINGS
DIVISION OF HIGHWAYS

PROJECT NO.	731	61H6	KANE	25	11	SHEET NO. 3
TOTAL SHEETS						11 SHEETS

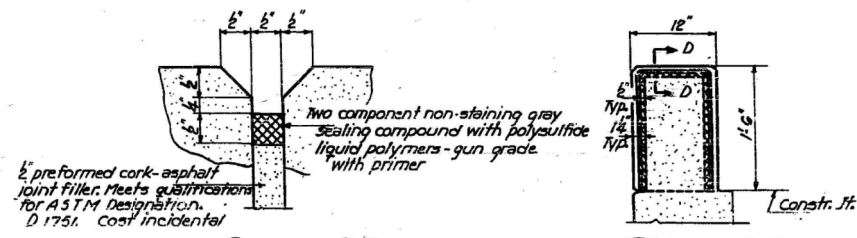


HALF ELEVATION

All dimensions along outside edge of Parapet

VALUES OF A & B

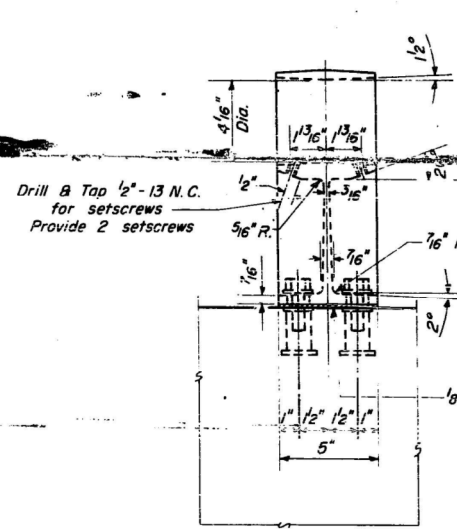
	W. End	E. End
A	10 ⁶	1 ⁵
B	1 ² ⁶	10 ⁶



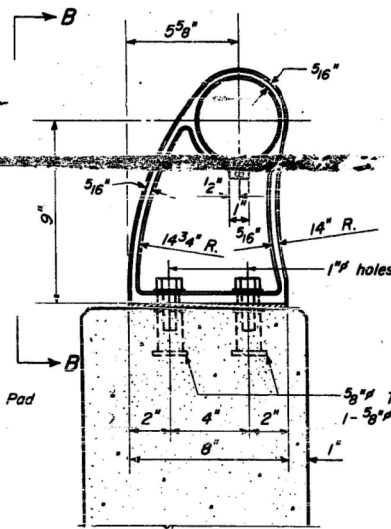
SECTION D-D

SECTION C-C

PARAPET JOINT DETAILS



VIEW B-B

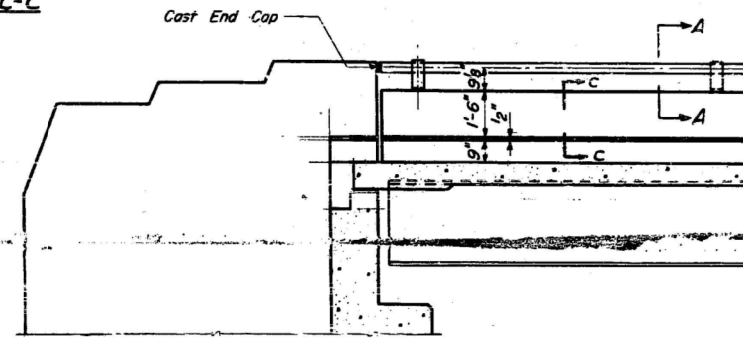


SECTION A-A

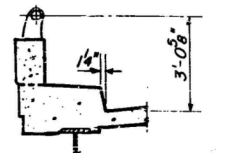
RAIL POST DETAILS

CAST END CAP

DRIVE FIT TYPE
4 - Required
Incidental to item "Aluminum Handrail"



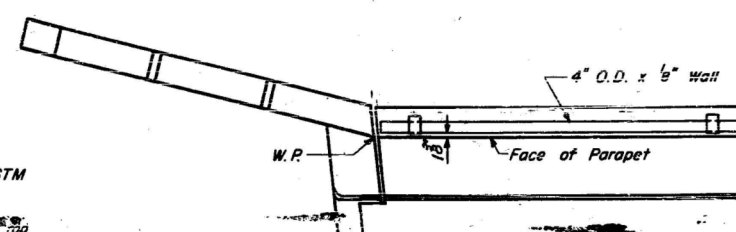
ELEVATION - END POST



SEC THRU CURB

BILL OF MATERIAL

Item	Unit	Quantity
Aluminum Handrail	Lin. Ft.	360



PLAN - END POST

ALUMINUM HANDRAIL

NOTES

- All Posts shall be placed normal to parapet
- All Posts shall be of Aluminum conforming to ASTM Specification B-108 alloy 56-70B-T6.
- All Rail Tubing shall be of Aluminum conforming to ASTM Specification B-235 alloy 6061-T6.
- Aluminum handrail shall be measured in lineal feet. The length shall be the overall length along the longitudinal railing member through all post and gaps.
- Rail Tubing shall be cut to chords between posts.
- For material composition of Prefabricated Pad, See Art. 54.9 (f), (Bearings and Anchorage), of the Std. Specs.
- Set Screws shall be of Aluminum conforming to ASTM Specification B-211 alloy 2024-T4.
- Aluminum handrail will be paid for at the contract unit price per lineal foot for ALUMINUM HANDRAIL, measured as specified, which price shall be payment in full for all material, fabrication, transportation and erection.

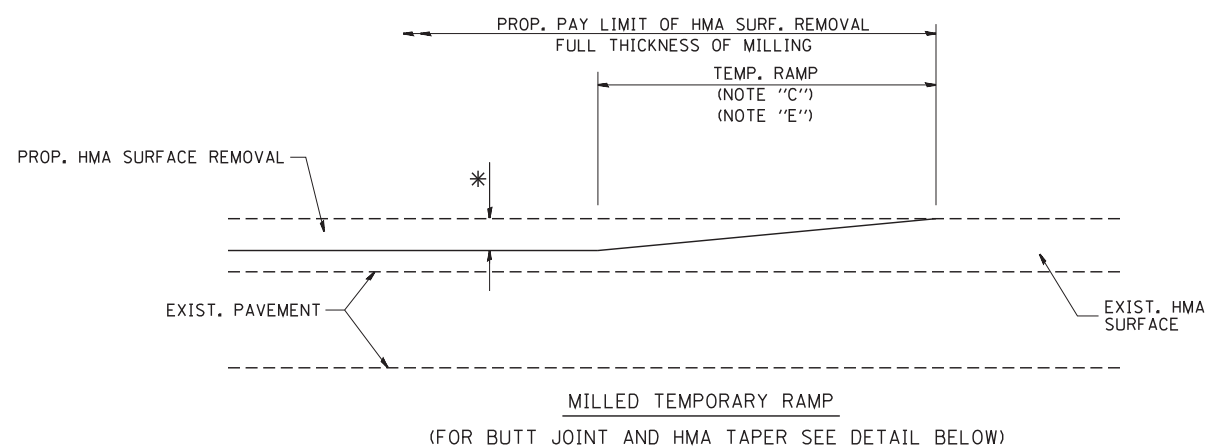
FOR INFORMATION ONLY

E.A. REIS - Sec. 61-H6
KANE COUNTY
STATION 226+69.60

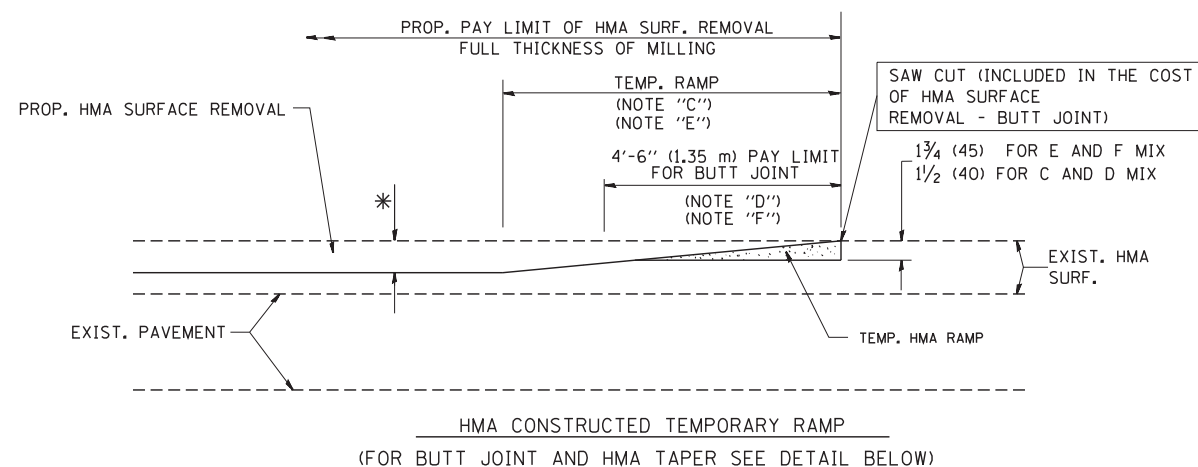
DESIGNED	T. M. Yang
CHECKED	W. H. Yang
DRAWN	W. A. Sausaman
CHECKED	W. H. Yang

DATE	MAY 21 1963
EXAMINED	W. G. Baumann
PASSED	P. J. Schmitt
CITY/STATE	SPRINGFIELD, ILL.

FILE NAME = W:\191-144 IDOT IL 56 at Hankes Rd\Reduced Scope\CADD Sheets\STRUCTURAL\HANKES-RS-006-EXISTING RAILING.dgn

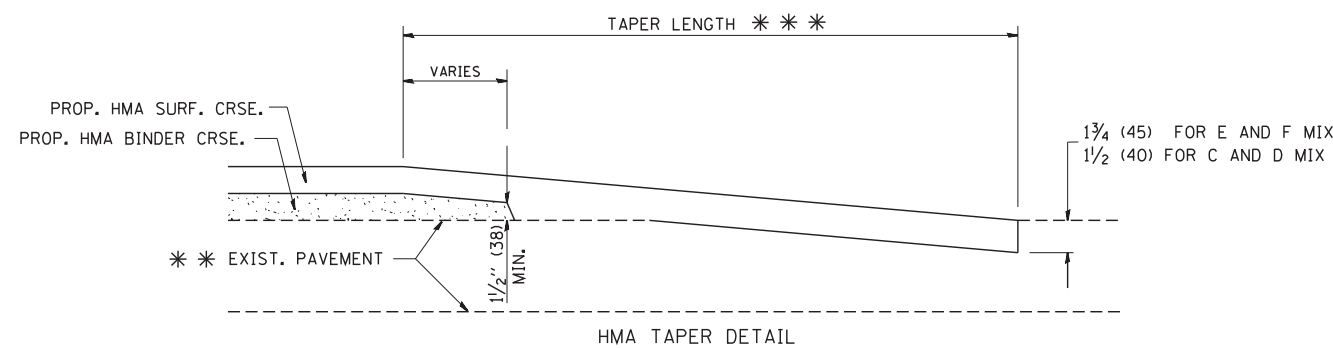
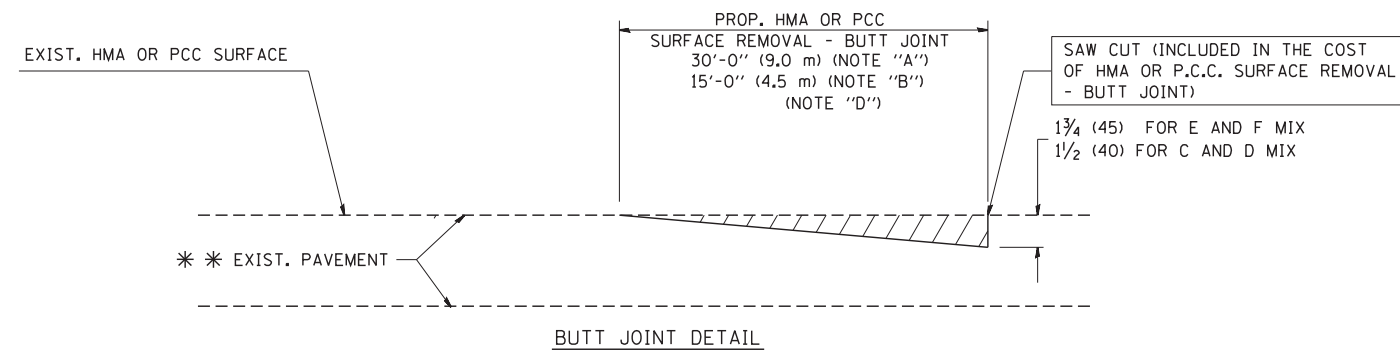


OPTION 1



OPTION 2

TYPICAL TEMPORARY RAMP



TYPICAL BUTT JOINT AND HMA TAPER FOR RESURFACING ONLY

*** PC CONCRETE, HMA OR HMA RESURFACED PAVEMENT.

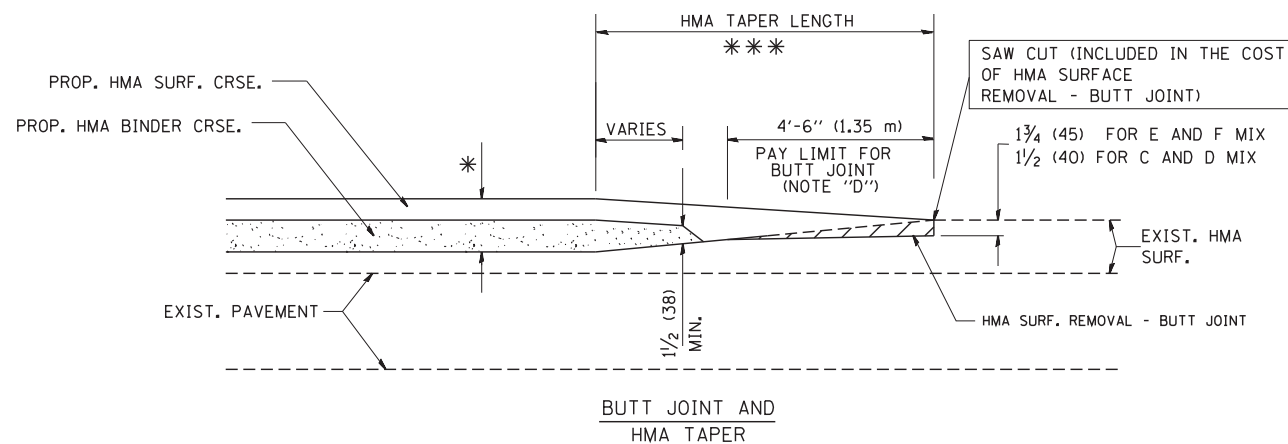
NOTES

- A: MAINLINE ROADWAYS AND MAJOR SIDE ROADS.
 - B: MINOR SIDE ROADS.
 - C: THE TEMP. RAMP SHALL BE CONSTRUCTED IMMEDIATELY UPON REMOVAL OF THE EXISTING HMA SURFACE.
 - D: THE BUTT JOINT SHALL BE CONSTRUCTED IMMEDIATELY PRIOR TO PLACING THE PROPOSED HMA COURSES.
 - E: TAPER THE TEMP. RAMP AT A RATE OF 3'-0" (900 mm) PER 1 INCH (25 mm) OF MILLING THICKNESS.
 - F: INSTALLATION AND REMOVAL OF THE 4'-6" (1.35 m) TEMP. RAMP IS INCLUDED IN COST OF HMA SURFACE REMOVAL - BUTT JOINT
 - G: SEE ARTICLE 406.08 AND 406.14 OF THE STANDARD SPECIFICATIONS FOR "HMA AND/OR PCC SURFACE REMOVAL, BUTT JOINT".
- * SEE TYPICAL SECTIONS FOR MILLING THICKNESS.
- *** 20'-0" (6.1 m) PER 1 (25) RESURFACING (NOTE "A")
10'-0" (3.0 m) PER 1 (25) RESURFACING (NOTE "B")

BASIS OF PAYMENT:

THE BUTT JOINT WILL BE PAID FOR AT THE CONTRACT UNIT PRICE PER SQUARE YARD (SQUARE METER) FOR "HOT-MIX ASPHALT SURFACE REMOVAL - BUTT JOINT" OR FOR "PORTLAND CEMENT CONCRETE SURFACE REMOVAL - BUTT JOINT".

ALL DIMENSIONS ARE IN INCHES (MILLIMETERS) UNLESS OTHERWISE SHOWN.



TYPICAL BUTT JOINT AND HMA TAPER FOR MILLING AND RESURFACING

FILE NAME = W:\diststd\22x34\bd32.dgn

USER NAME = gaglionobt
PLOT SCALE = 50.0000' / IN.
PLOT DATE = 1/4/2008

DESIGNED - M. DE YONG
DRAWN -
CHECKED -
DATE - 06-13-90

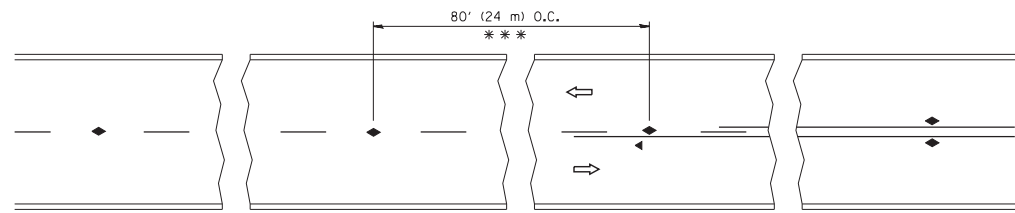
REVISED - R. SHAH 10-25-94
REVISED - A. ABBAS 03-21-97
REVISED - M. GOMEZ 04-06-01
REVISED - R. BORO 01-01-07

**STATE OF ILLINOIS
DEPARTMENT OF TRANSPORTATION**

**BUTT JOINT AND
HMA TAPER DETAILS**

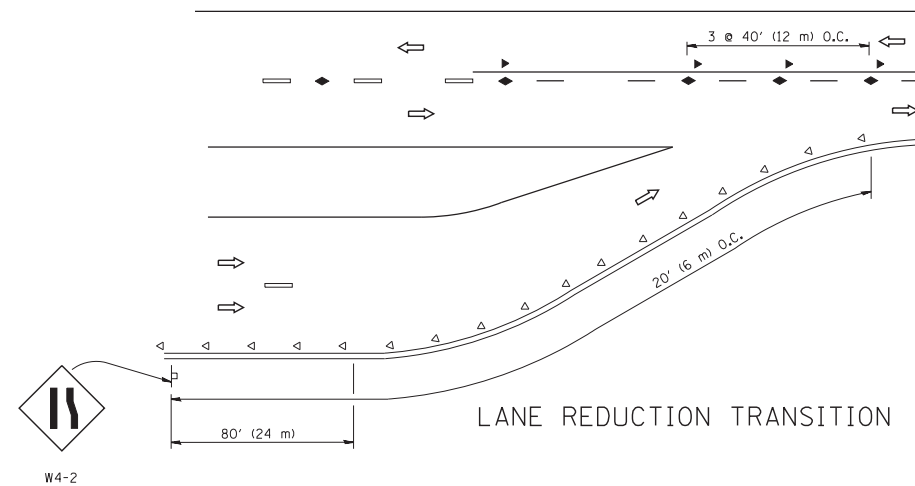
SCALE: NONE SHEET NO. 1 OF 1 SHEETS STA. TO STA.

F.A.P. RTE.	SECTION	COUNTY	TOTAL SHEETS	SHEET NO.
573	2019-044-BP&BR	KANE	15	11
BD400-05 BD32		CONTRACT NO. 62J22		
FED. ROAD DIST. NO. 1 ILLINOIS FED. AID PROJECT				

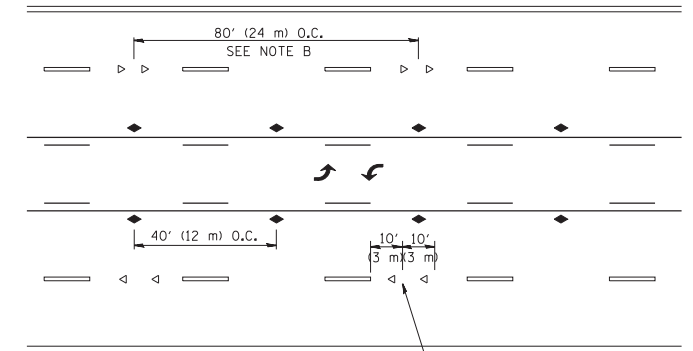


*** REDUCE TO 40' (12 m) O.C. ON CURVES WITH POSTED OR ADVISORY SPEED 45 M.P.H. (70 km/h) OR LESS.

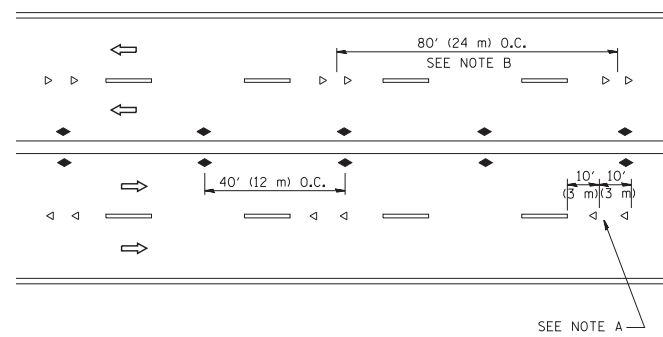
TWO-LANE/TWO-WAY



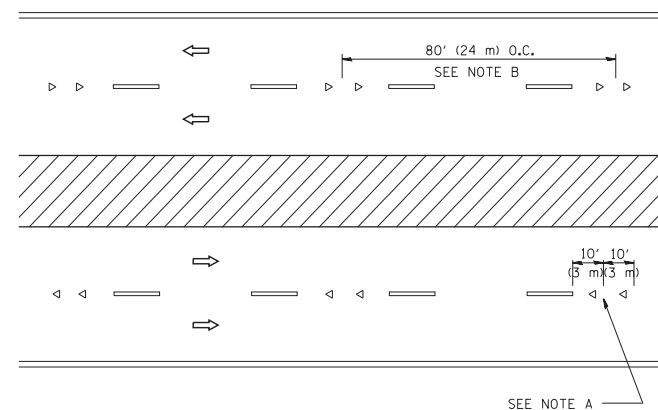
LANE REDUCTION TRANSITION



TWO-WAY LEFT TURN



MULTI-LANE/UNDIVIDED



MULTI-LANE/DIVIDED

GENERAL NOTES

1. MARKERS USED WITH DASHED LINES SHALL BE CENTERED IN THE GAP BETWEEN SEGMENTS.
2. MARKERS USED ADJACENT TO SOLID LINES SHALL BE OFFSET 2 TO 3 (50 TO 75) TOWARD TRAFFIC AS SHOWN.
3. MARKERS THROUGH TANGENTS LESS THAN 500' (150 m) IN LENGTH BETWEEN CURVES SHALL BE INSTALLED AT THE LESSER OF THE TWO CURVE SPACINGS.

SYMBOLS

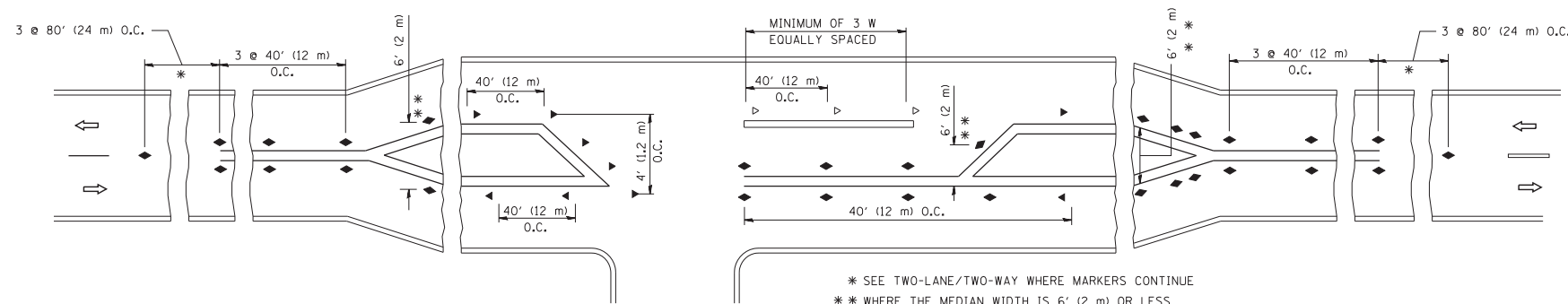
- YELLOW STRIPE
- WHITE STRIPE
- ◀ ONE-WAY AMBER MARKER
- ◁ ONE-WAY CRYSTAL MARKER (W/O)
- ◆ TWO-WAY AMBER MARKER

LANE MARKER NOTES

- A. USE DOUBLE LANE LINE MARKERS SPACED AS SHOWN.
- B. REDUCE TO 40' (12 m) O.C. ON CURVES WHERE ADVISORY SPEEDS ARE 10 M.P.H (20 km/h) LOWER THAN POSTED SPEEDS.

DESIGN NOTES

1. DOUBLE LANE LINE MARKERS SHALL BE USED UNLESS SPECIFIED OTHERWISE.
2. EXCEPT AS SHOWN ON THE LANE REDUCTION TRANSITION AND FREEWAY EXIT RAMP DETAIL, MARKERS ARE NOT TO BE SPECIFIED ON RIGHT EDGE LINES.
3. THE EXACT MARKER LIMITS, SPACING, AND COLOR SHALL BE INCLUDED IN THE PLANS WHEN STANDARD SPECIFICATIONS ARE NOT BEING USED.
4. MARKERS SHOULD NOT BE USED ALONGSIDE CURBS EXCEPT FOR EXTREMELY SHORT SECTIONS OF CURBS WHERE NOT MORE THAN TWO MARKERS WOULD BE INVOLVED.



LEFT TURN

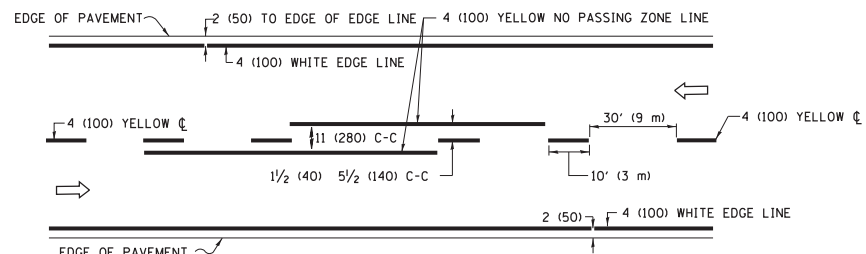
All dimensions are in inches (millimeters) unless otherwise shown.

FILE NAME =	USER NAME = lryso	DESIGNED -	REVISED - T. RAMMACHER 09-19-94
ct:\pw\work\p\dot\lryso\d0108315\l1.dgn		DRAWN -	REVISED - T. RAMMACHER 03-12-99
	PLOT SCALE = 50.000' / IN.	CHECKED -	REVISED - T. RAMMACHER 01-06-00
	PLOT DATE = 3/2/2011	DATE -	REVISED - C. JUCIUS 09-09-09

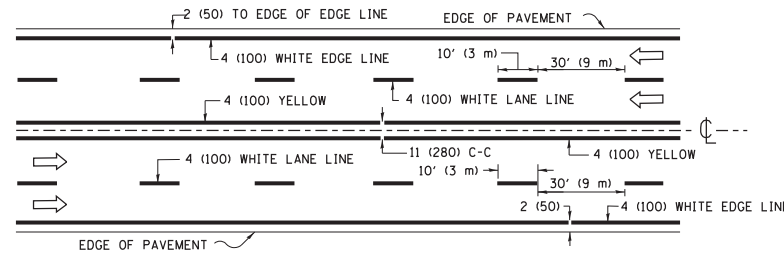
STATE OF ILLINOIS
DEPARTMENT OF TRANSPORTATION

TYPICAL APPLICATIONS			
RAISED REFLECTIVE PAVEMENT MARKERS (SNOW-PLOW RESISTANT)			
SCALE: NONE	SHEET NO. 1 OF 1 SHEETS	STA.	TO STA.

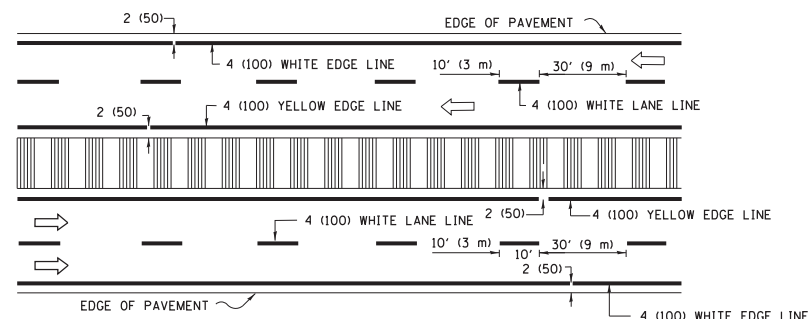
F.A.P. RTE.	SECTION	COUNTY	TOTAL SHEETS	SHEET NO.
573	2019-044-BP&BR	KANE	15	12
TC-11			CONTRACT NO. 62J22	
FED. ROAD DIST. NO. 1 ILLINOIS FED. AID PROJECT				



2-LANE ROADWAY

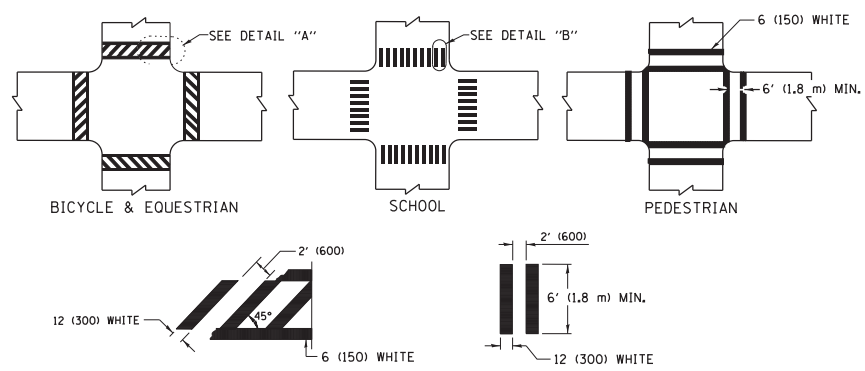


MULTI-LANE UNDIVIDED



MULTI-LANE DIVIDED WITH MEDIAN

TYPICAL LANE AND EDGE LINE MARKING

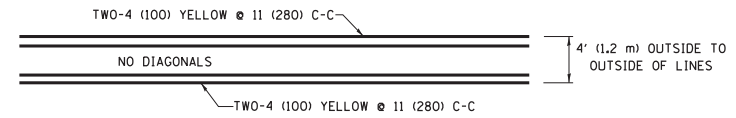


DETAIL "A"

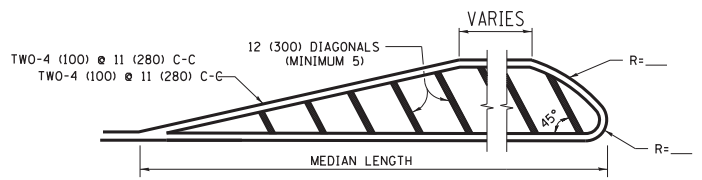
DETAIL "B"

TYPICAL CROSSWALK MARKING

* MARKINGS SHALL BE INSTALLED PARALLEL TO THE CENTERLINE OF THE ROAD WHICH IT CROSSES

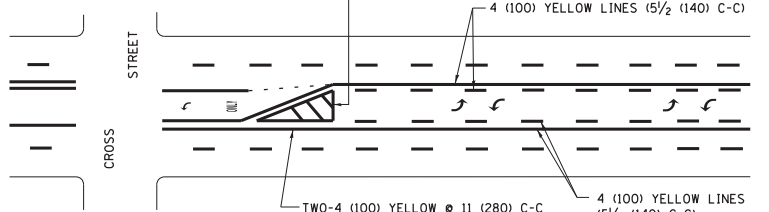


4' (1.2 m) WIDE MEDIANS ONLY

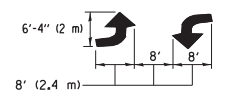


MEDIANS OVER 4' (1.2 m) WIDE

DIAGONAL LINE SPACING: 50' (15 m) C-C (LESS THAN 30MPH (50 km/h))
75' (25 m) C-C 30MPH (50 km/h) TO 45MPH (70 km/h)
150' (45 m) C-C (MORE THAN 45MPH (70 km/h))

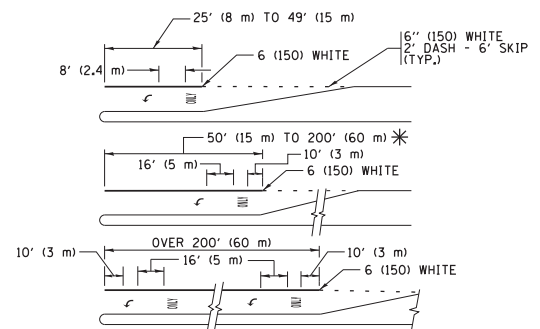


A MINIMUM OF TWO PAIRS OF TURN ARROWS SHALL BE USED, WHITE IN COLOR. ADDITIONAL PAIRS SHALL BE PLACED AT 200' (60 m) TO 300' (90 m) INTERVALS.



MEDIAN WITH TWO-WAY LEFT TURN LANE

TYPICAL PAINTED MEDIAN MARKING

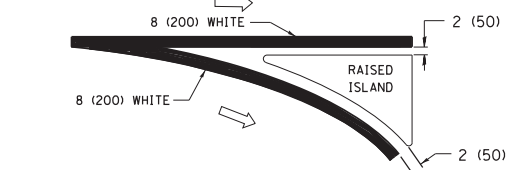
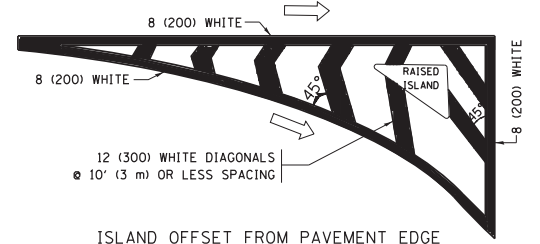


FULL SIZE LETTERS 8' (2.4 m) AND ARROWS SHALL BE USED.
AREA = 15.6 SQ. FT. (1.5 m²) ONLY AREA = 20.8 SQ. FT. (1.9 m²)

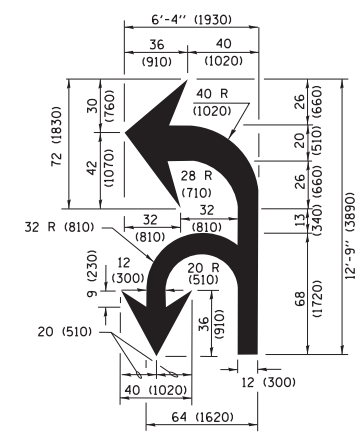
* TURN LANES IN EXCESS OF 400' (120 m) IN LENGTH MAY HAVE AN ADDITIONAL SET OF ARROW - "ONLY" INSTALLED MIDWAY BETWEEN THE OTHER TWO SETS OF ARROW - "ONLY".

TYPICAL LEFT (OR RIGHT) TURN LANE

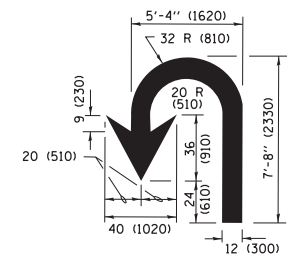
TYPICAL TURN LANE MARKING



TYPICAL ISLAND MARKING



COMBINATION LEFT AND U-TURN



LANE REDUCTION TRANSITION

* LANE REDUCTION ARROWS REQUIRED AT SPEEDS OF 45 MPH OR GREATER OR WHEN SPECIFIED IN PLANS.

D(FT)	SPEED LIMIT
345	30
425	35
500	40
580	45
665	50
750	55

TYPE OF MARKING	WIDTH OF LINE	PATTERN	COLOR	SPACING /REMARKS
CENTERLINE ON 2 LANE PAVEMENT	4 (100)	SKIP-DASH	YELLOW	10' (3 m) LINE WITH 30' (9 m) SPACE
CENTERLINE ON MULTI-LANE UNDIVIDED PAVEMENT	2 @ 4 (100)	SOLID	YELLOW	11 (280) C-C
NO PASSING ZONE LINES FOR ONE DIRECTION FOR BOTH DIRECTIONS	4 (100) 2 @ 4 (100)	SOLID SOLID	YELLOW YELLOW	5/2 (140) C-C FROM SKIP-DASH CENTERLINE 11 (280) C-C OMIT SKIP-DASH CENTERLINE BETWEEN
LANE LINES	4 (100) 5 (125) ON FREEWAYS	SKIP-DASH SKIP-DASH	WHITE WHITE	10' (3 m) LINE WITH 30' (9 m) SPACE
DOTTED LINES (EXTENSIONS OF CENTER, LANE OR TURN LANE MARKINGS)	SAME AS LINE BEING EXTENDED	SKIP-DASH	SAME AS LINE BEING EXTENDED	2' (600) LINE WITH 6' (1.8 m) SPACE
EDGE LINES	4 (100)	SOLID	YELLOW-LEFT WHITE-RIGHT	OUTLINE MEDIANS IN YELLOW
TURN LANE MARKINGS	6 (150) LINE; FULL SIZE LETTERS & SYMBOLS (8' (2.4m))	SOLID	WHITE	SEE TYPICAL TURN LANE MARKING DETAIL
TWO WAY LEFT TURN MARKING	2 @ 4 (100) EACH DIRECTION 8' (2.4m) LEFT ARROW	SKIP-DASH AND SOLID IN PAIRS	YELLOW WHITE	10' (3 m) LINE WITH 30' (9 m) SPACE FOR SKIP-DASH; 5/2 (140) C-C BETWEEN SOLID LINE AND SKIP-DASH LINE SEE TYPICAL TWO-WAY LEFT TURN MARKING DETAIL
CROSSWALK LINES (PEDESTRIAN) A. DIAGONALS (BIKE & EQUESTRIAN) B. LONGITUDINAL BARS (SCHOOL)	2 @ 6 (150) 12 (300) @ 45° 12 (300) @ 90°	SOLID SOLID SOLID	WHITE WHITE WHITE	NOT LESS THAN 6' (1.8 m) APART 2' (600) APART 2' (600) APART SEE TYPICAL CROSSWALK MARKING DETAILS.
STOP LINES	24 (600)	SOLID	WHITE	PLACE 4' (1.2 m) IN ADVANCE OF AND PARALLEL TO CROSSWALK, IF PRESENT, OTHERWISE, PLACE AT DESIRED STOPPING POINT, PARALLEL TO CROSSROAD CENTERLINE, WHERE POSSIBLE.
PAINTED MEDIANS	2 @ 4 (100) WITH 12 (300) DIAGONALS @ 45° NO DIAGONALS USED FOR 4' (1.2 m) WIDE MEDIANS	SOLID	YELLOW; TWO WAY TRAFFIC WHITE; ONE WAY TRAFFIC	11 (280) C-C FOR THE DOUBLE LINE SEE TYPICAL PAINTED MEDIAN MARKING.
GORE MARKING AND CHANNELIZING LINES	8 (200) WITH 12 (300) DIAGONALS @ 45°	SOLID	WHITE	DIAGONALS: 15' (4.5 m) C-C (LESS THAN 30MPH (50 km/h)) 20' (6 m) C-C 30MPH (50 km/h) TO 45MPH (70 km/h) 30' (9 m) C-C (OVER 45MPH (70 km/h))
RAILROAD CROSSING	24 (600) TRANSVERSE LINES; "RR" IS 6' (1.8 m) LETTERS; 16 (400) LINE FOR "X"	SOLID	WHITE	SEE STATE STANDARD 780001 AREA OF: "R"=3.6 SQ. FT. (0.33 m ²) EACH "X"=54.0 SQ. FT. (5.0 m ²)
SHOULDER DIAGONALS (REQUIRED FOR SHOULDERS ≥ 8')	12 (300) @ 45°	SOLID	WHITE - RIGHT YELLOW - LEFT	50' (15 m) C-C (LESS THAN 30MPH (50 km/h)) 75' (25 m) C-C (30 MPH (50 km/h) TO 45MPH (70 km/h)) 150' (45 m) C-C (OVER 45MPH (70 km/h))
U TURN ARROW	SEE DETAIL	SOLID	WHITE	16.3 SF
2 ARROW COMBINATION LEFT AND U TURN	SEE DETAIL	SOLID	WHITE	30.4 SF

FOR FURTHER DETAILS ON PAVEMENT MARKING REFER TO STANDARD SPECIFICATIONS FOR ROAD AND BRIDGE CONSTRUCTION AND STATE STANDARD 780001.

All dimensions are in inches (millimeters) unless otherwise shown.

FILE NAME = W:\diststd\22x34\to13.dgn	USER NAME = luyso	DESIGNED - EVERS	REVISED - C. JUCIUS 09-09-09
Default	PLOT SCALE = 50.000' / in.	DRAWN -	REVISED - C. JUCIUS 07-01-13
	PLOT DATE = 6/23/2017	CHECKED -	REVISED - C. JUCIUS 12-21-15
		DATE - 03-19-90	REVISED - C. JUCIUS 04-12-16

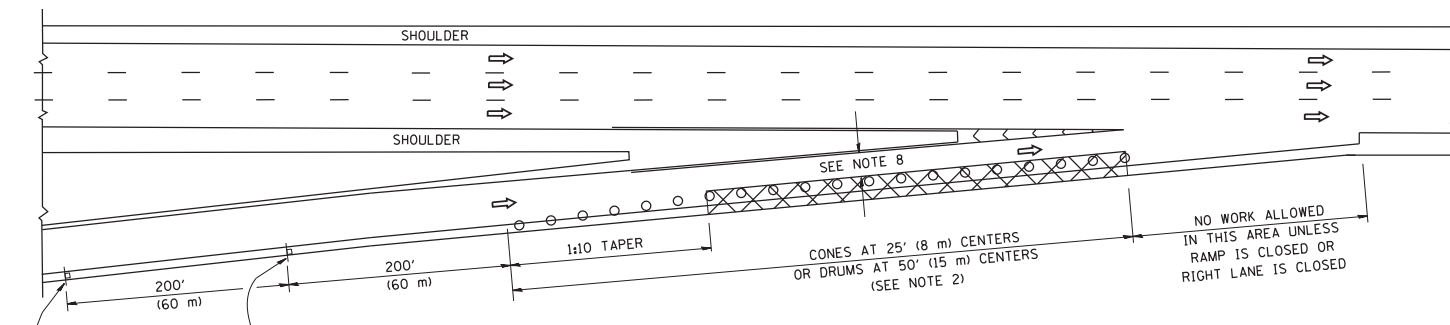
**STATE OF ILLINOIS
DEPARTMENT OF TRANSPORTATION**

**DISTRICT ONE
TYPICAL PAVEMENT MARKINGS**

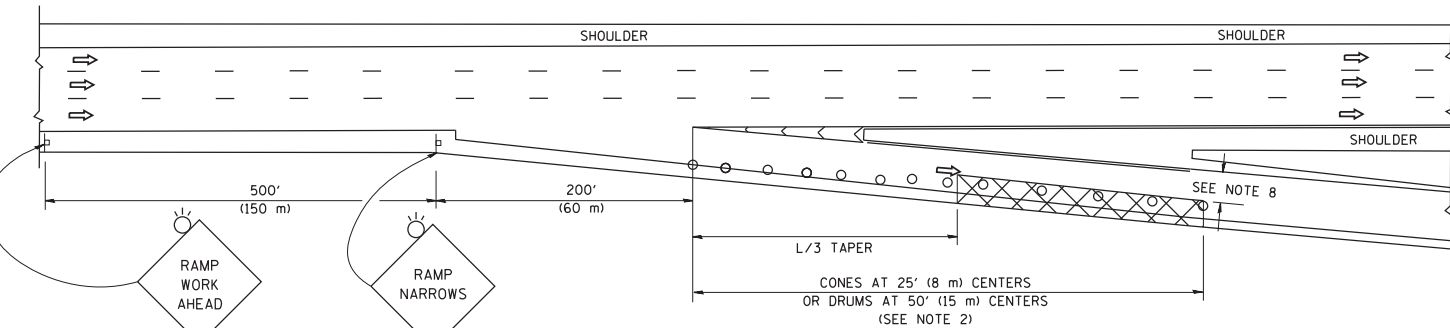
SCALE: NONE SHEET 1 OF 1 SHEETS STA. TO STA.

F.A.P RTE.	SECTION	COUNTY	TOTAL SHEETS	SHEET NO.
573	2019-044-BP&BR	KANE	15	13
TC-13		CONTRACT NO. 62J22		
ILLINOIS FED. AID PROJECT				

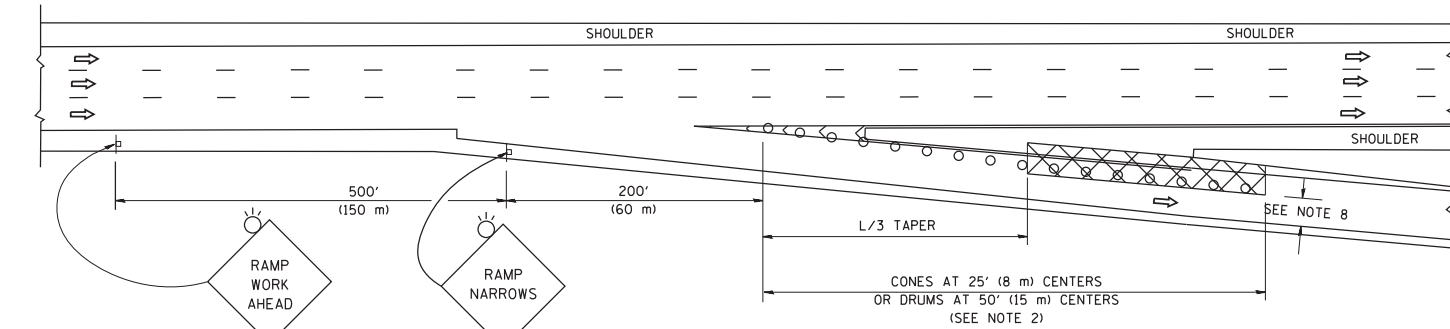
PARTIAL RAMP CLOSURE DETAILS



TYPICAL ENTRANCE RAMP



TYPICAL EXIT RAMP



TYPICAL EXIT RAMP

SYMBOLS

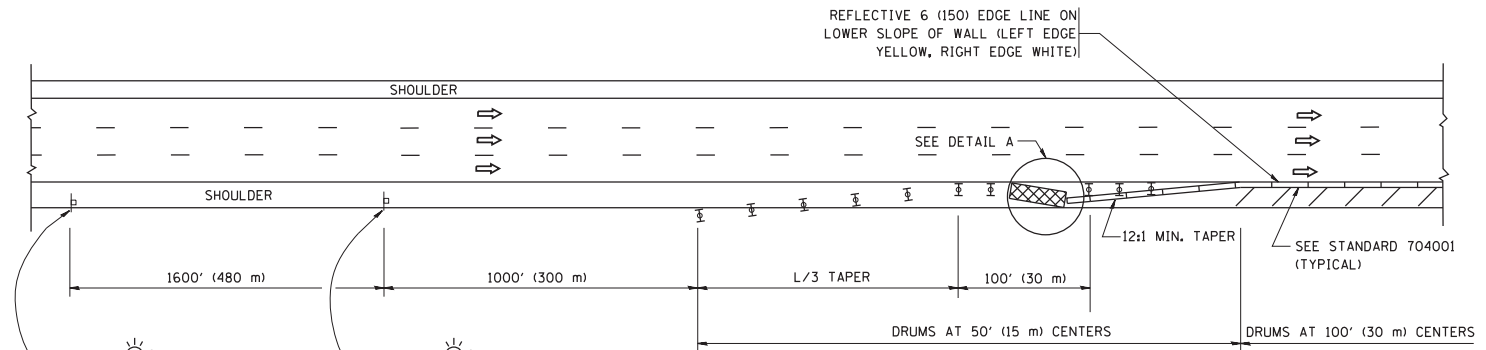
- ACTIVE WORK AREA
- SIGN ON PORTABLE OR PERMANENT SUPPORT
- FLAGGER WITH CONTROL SIGN
- TYPE II BARRICADE OR DRUM
- CONE, DRUM OR BARRICADE
- IMPACT ATTENUATOR OF TYPE AND TEST LEVEL SPECIFIED

GENERAL NOTES

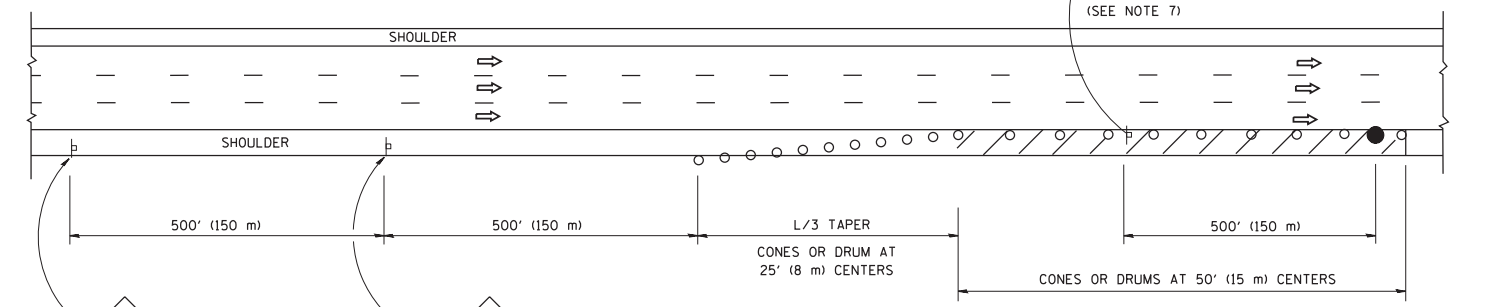
1. THE "L" DISTANCE EQUALS:

SPEED LIMIT	FORMULAS
45 mph (80 km/h)	METRIC ENGLISH
OR GREATER:	L=0.65(W)(S) L=(W)(S)
W = WIDTH OF OFFSET IN FEET (METERS)	
S = NORMAL POSTED SPEED MPH (KM/H)	
2. TYPE II BARRICADES OR DRUMS ARE REQUIRED FOR ALL NIGHTTIME CLOSURES. TYPE II BARRICADES OR DRUMS WITH MONODIRECTIONAL STEADY BURN LIGHTS ARE REQUIRED FOR DELINEATING OBSTACLES, EXCAVATIONS, OR HAZARDS EXCEEDING 100 FT (30m) IN LENGTH AT NIGHT.
3. ALL SIGNS SHALL BE POST MOUNTED IF THE CLOSURE TIME EXCEEDS FOUR DAYS.
4. FLASHING LIGHTS SHALL BE USED DURING THE HOURS OF DARKNESS AND SHALL BE INSTALLED ABOVE THE FIRST TWO SETS OF SIGNS.
5. THE IMPACT ATTENUATOR, TEMPORARY IS NOT REQUIRED WHEN THE TEMPORARY CONCRETE BARRIER WALL IS PROTECTED BY OR IS TIED INTO THE EXISTING GUARDRAIL. IF OFFSET IS LESS THAN 5 FEET USE NARROW USE TYPE DEVICE TO MEET NCHRP350/MASH.
6. AUTHORIZATION FROM THE DISTRICT'S BUREAU OF TRAFFIC IS REQUIRED FOR ALL FREEWAY CLOSURES.
7. THE FLAGGER AND FLAGGER SIGN ARE REQUIRED AT THE ABOVE WORK SITES WHEN:
 - a. FOUR OR MORE WORK VEHICLES ENTER THE TRAFFIC LANES IN A ONE HOUR PERIOD.
 - b. THE WORK ACTIVITY REQUIRES FREQUENT ENCROACHMENT INTO THE LANE OPEN TO TRAFFIC.
 THE FLAGGER SHALL BE STATIONED APPROXIMATELY 100' (30 m) TO 200' (60 m) IN ADVANCE OF THE WORKERS.
8. 12' MIN. WIDTH TANGENT SECTION
16' MIN. WIDTH CURVE SECTION.

SHOULDER CLOSURE DETAILS

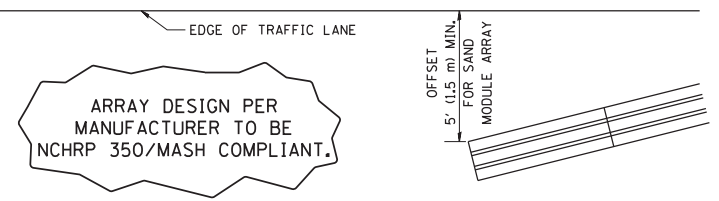


PERMANENT SHOULDER CLOSURE



DAYTIME SHOULDER CLOSURE

THIS DETAIL IS USED WHERE:
1. VEHICLES, EQUIPMENT, WORKERS OR THEIR ACTIVITIES ENCROACH IN AN AREA CLOSER THAN 15' (4.5 m) TO THE EDGE OF PAVEMENT FOR A PERIOD IN EXCESS OF 15 MINUTES.



ALL DIMENSIONS ARE IN INCHES (MILLIMETERS) UNLESS OTHERWISE SHOWN.

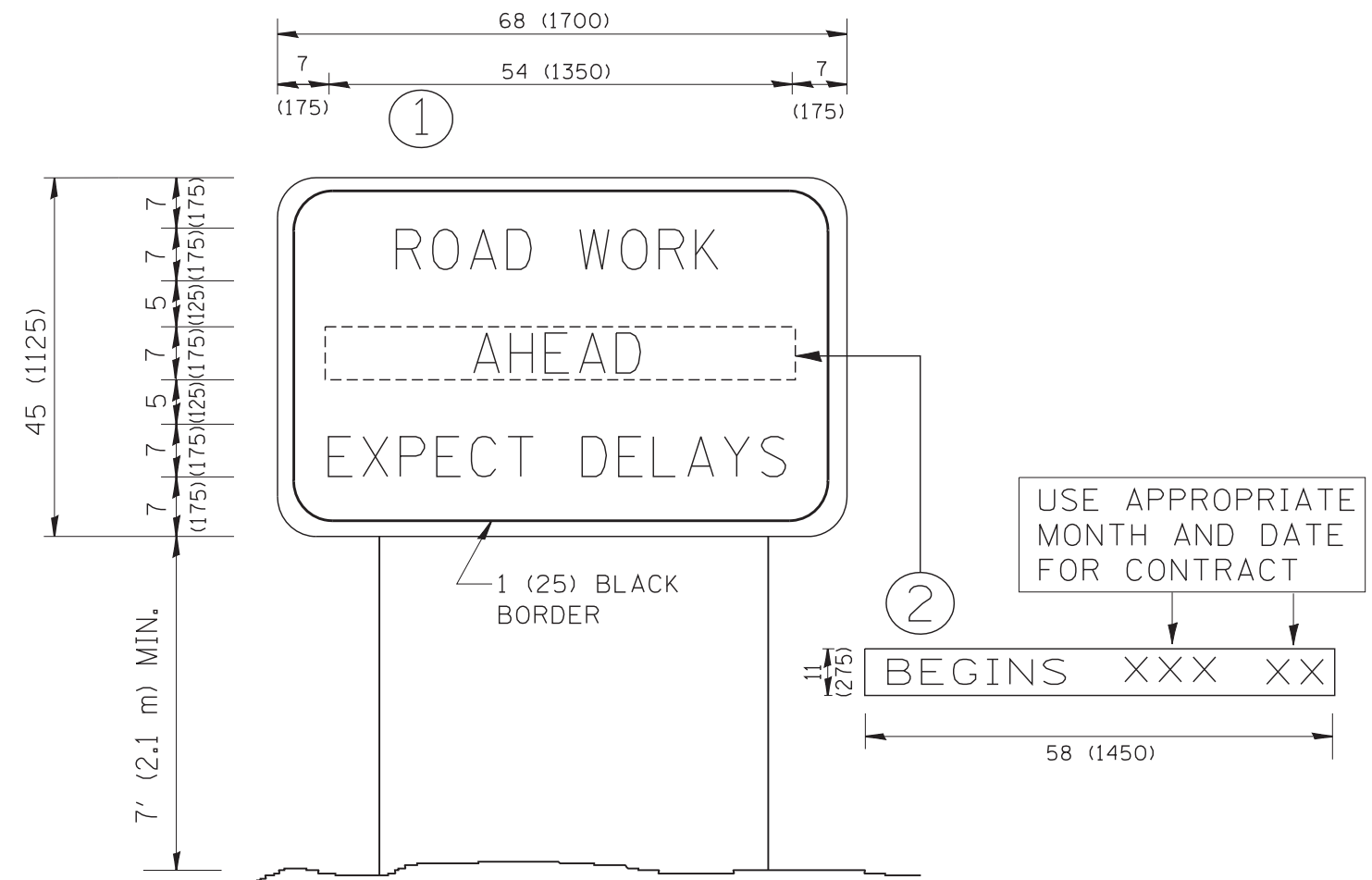
FILE NAME =	USER NAME = footemj	DESIGNED -	REVISED - S.P.B. 01-07
pw:\IL\084EBID\INTEG\illinois.gov\PI\DOT\Documents\DOT Offices\District 1\Projects\Dist 1\084EBID\CAD\Drawings\T17.dgn		CHECKED -	REVISED - S.P.B. 12-09
Default	PLOT SCALE = 50.0000' / in.	DATE - 11-96	REVISED - M.D. 06-13
	PLOT DATE = 11/27/2017		REVISED - M.D. 01-18

STATE OF ILLINOIS
DEPARTMENT OF TRANSPORTATION

TRAFFIC CONTROL DETAILS FOR FREEWAY
SHOULDER CLOSURES AND PARTIAL RAMP CLOSURES

SCALE: NONE SHEET 1 OF 1 SHEETS STA. TO STA.

F.A.P. RTE.	SECTION	COUNTY	TOTAL SHEETS	SHEET NO.
573	2019-044-BP&BR	KANE	15	14
TC-17		CONTRACT NO. 62J22		
ILLINOIS FED. AID PROJECT				



NOTES:

1. USE BLACK LETTERING ON ORANGE BACKGROUND.
2. ERECT SIGNS IN ADVANCE OF THE LOCATION FOR THE "ROAD CONSTRUCTION AHEAD" SIGN AT LOCATIONS AS DIRECTED BY THE ENGINEER.
3. ERECT SIGN ① WITH INSTALLED PANEL ② ONE WEEK PRIOR TO THE START OF CONSTRUCTION.
4. REMOVE PANEL ② SOON AFTER THE START OF CONSTRUCTION.
5. SEE SPECIAL PROVISION FOR "TEMPORARY INFORMATION SIGNING" FOR ADDITIONAL INFORMATION.
6. ONE SIGN ASSEMBLY EQUALS 25.70 SQ. FT. (2.3 SQ. M.)
7. SHALL BE PAID FOR AS TEMPORARY INFORMATION SIGNING.

ALL DIMENSIONS ARE IN INCHES (MILLIMETERS) UNLESS OTHERWISE SHOWN.

FILE NAME = W:\diststd\22x34\tc22.dgn	USER NAME = gaglianobt	DESIGNED - DRAWN -	REVISED - REVISED -
		DESIGNED - CHECKED -	REVISED - REVISED -
		DESIGNED - DATE -	REVISED - REVISED -

**STATE OF ILLINOIS
DEPARTMENT OF TRANSPORTATION**

**ARTERIAL ROAD
INFORMATION SIGN**

SCALE: NONE SHEET NO. 1 OF 1 SHEETS STA. TO STA.

F.A.P. RTE.	SECTION	COUNTY	TOTAL SHEETS	SHEET NO.
573	2019-044-BP&BR	KANE	15	15
TC-22			CONTRACT NO. 62J22	
<small>FED. ROAD DIST. NO. 1 ILLINOIS FED. AID PROJECT</small>				