

STATE OF ILLINOIS
DEPARTMENT OF TRANSPORTATION

F.A. RTE.	SECTION	COUNTY	TOTAL SHEETS	SHEET NO.
2484	1128RS-3	FORD	8	1
ILLINOIS			CONTRACT NO. 66A03	

INDEX OF SHEETS

- 1 COVER SHEET
- 2 GENERAL NOTES
- 3 - 4 SUMMARY OF QUANTITIES
- 5 TYPICAL SECTIONS
- 6 SCHEDULES
- 7 - 8 DETAILS

LIST OF ILLINOIS DOT HIGHWAY STANDARDS

000001-07	STANDARD SYMBOLS, ABBREVIATIONS AND PATTERNS
001006	DECIMAL OF AN INCH AND OF A FOOT
406201-01	MAILBOX TURNOUT
667101-02	PERMANENT SURVEY MARKERS
701306-04	LANE CLOSURE, 2L, 2W, SLOW MOVING OPERATIONS DAY ONLY, FOR SPEEDS ≥ 45 MPH
701311-03	LANE CLOSURE, 2L, 2W, MOVING OPERATIONS - DAY ONLY
780001-05	TYPICAL PAVEMENT MARKINGS
781001-04	TYPICAL APPLICATIONS RAISED REFLECTIVE PAVEMENT MARKERS

PROPOSED
HIGHWAY PLANS

FAS ROUTE 2484 (IL 165)
SECTION (128)RS-3
PROJECT STP-DP58(459)
3P MILLING AND
RESURFACING
FORD COUNTY

C-93-064-10

R7E

PROJECT END
STA 204+20

PROJECT BEGIN
STA 0+00



MAJOR COLLECTOR-RURAL
2017 ADT = 575 VPD

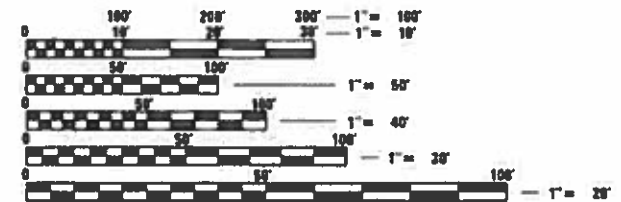
PV = 84.4% SU = 5.2% MU = 10.4%

STATE OF ILLINOIS
DEPARTMENT OF TRANSPORTATION
DIVISION OF HIGHWAYS

SUBMITTED March 21 20 19
Luis Calderon
REGIONAL ENGINEER

May 10 20 19
Brad Druncan
ENGINEER OF DESIGN AND ENVIRONMENT

May 10 20 19
Brad Druncan
DIRECTOR OF HIGHWAYS, PROJECT IMPLEMENTATION

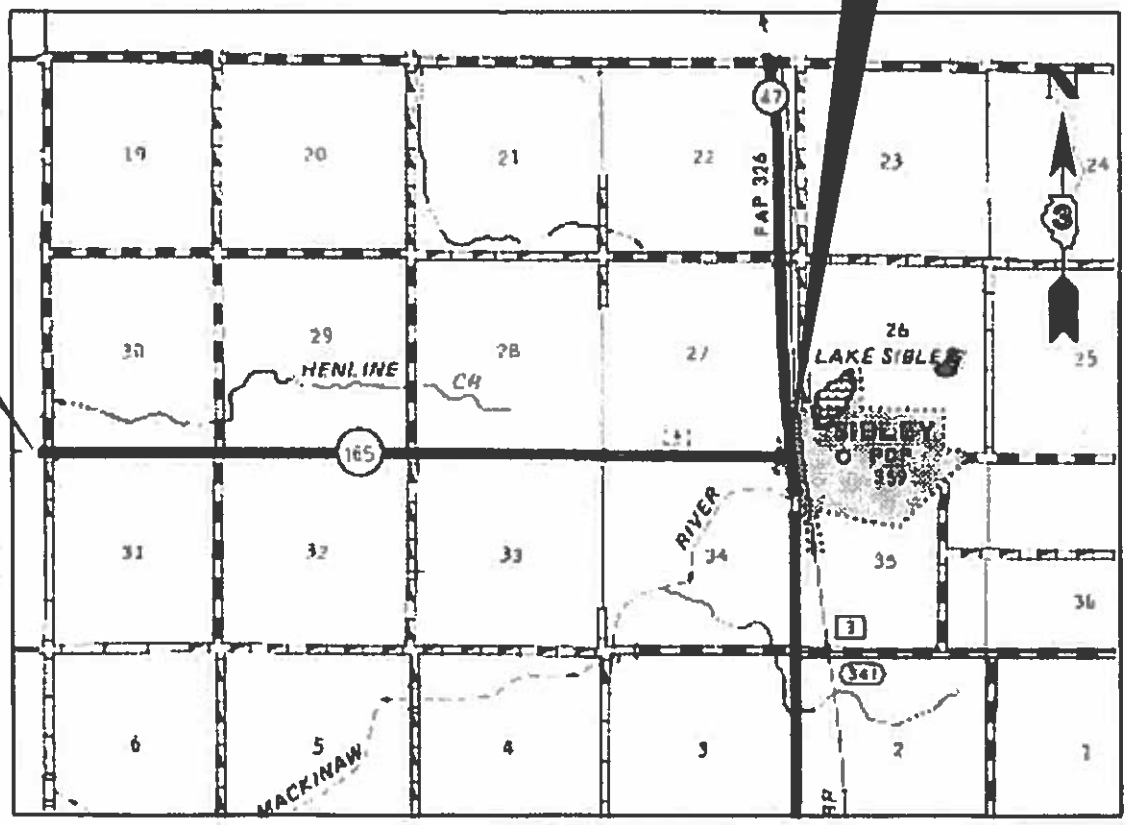


FULL SIZE PLANS HAVE BEEN PREPARED USING STANDARD ENGINEERING SCALES. REDUCED SIZED PLANS WILL NOT CONFORM TO STANDARD SCALES. IN MAKING MEASUREMENTS ON REDUCED PLANS, THE ABOVE SCALES MAY BE USED.

J.U.L.I.E.
JOINT UTILITY LOCATION INFORMATION FOR EXCAVATION
1-800-892-0123
OR 811

PROJECT ENGINEER: BRAD DRUNCAN, P.E.
UNIT CHIEF: LUIS CALDERON, P.E.

CONTRACT NO. 66A03



GROSS LENGTH = 20433.6 FT. = 3.87 MILE
NET LENGTH = 20433.6 FT. = 3.87 MILE

PRINTED BY THE AUTHORITY
OF THE STATE OF ILLINOIS

GENERAL NOTES

THE THICKNESS OF HMA SHOWN ON THE PLANS IS THE NOMINAL THICKNESS. DEVIATIONS FROM THE NOMINAL THICKNESS WILL BE PERMITTED WHEN SUCH DEVIATIONS OCCUR DUE TO IRREGULARITIES IN THE EXISTING SURFACE OR BASE ON WHICH THE HMA IS PLACED.

THE HMA SURFACE OF ALL MAILBOX TURNOUTS, PRIVATE ENTRANCES, COMMERCIAL ENTRANCES, AND SIDE ROADS SHALL BE MADE NEATLY, IN A WORKMANLIKE MANNER, AND SHALL ACCURATELY CONFORM TO THE SHAPES AND DIMENSIONS SHOWN ON THE PLAN DETAILS. IF REQUIRED BY THE ENGINEER, THE CONTRACTOR SHALL SAW CUT THE HMA SURFACE TO CONFORM TO THE SHAPES AND DIMENSIONS SHOWN ON THE PLAN DETAILS. THIS WORK WILL BE INCLUDED IN THE COST OF THE HMA SURFACE.

EXCEPT AS NOTED ON THE PLANS, PAVEMENT GRADES SHOWN ARE AT THE TOP OF PAVEMENT SURFACES.

THE ENGINEER WILL BE THE SOLE JUDGE CONCERNING CURING TIME FOR THE VARIOUS HMA LIFTS.

FOR STABILIZATION, ALL TYPE III BARRICADES WILL REQUIRE A MINIMUM OF FOUR SAND BAGS PER BARRICADE.

SEEDING WILL NOT BE PERMITTED AT ANY TIME WHEN THE GROUND IS FROZEN, WET, OR IN AN UNTILLABLE CONDITION. LOCATIONS TO BE SEEDED WILL BE DETERMINED BY THE ENGINEER.

THE FINISHED EARTHWORK SHALL HAVE A VEGETATION SUSTAINING SOIL COVERING THE TOP FOUR INCHES (100 MILLIMETERS) IN AREAS TO BE SEEDED OR SODDED. THE VEGETATION SUSTAINING SOIL REQUIRED WILL NOT BE PAID FOR SEPARATELY BUT WILL BE INCLUDED IN THE COST OF FURNISHED EXCAVATION.

ALL EXCAVATED MATERIAL, WHICH INCLUDES DIGGING OR GRADING OF ANY SOIL OR FILL MATERIAL, WITH THE EXCEPTION OF AGGREGATE FILLS, MUST BE INCORPORATED WITHIN THE IDOT RIGHT OF WAY DUE TO ENVIRONMENTAL DOCUMENTATION REQUIREMENTS.

ON EXISTING PAVEMENT WHICH MAY BE SUPERELEVATED, THE NEW HMA PAVEMENT SHALL BE BUILT WITH THE SAME SUPERELEVATION UNLESS NEW SUPERELEVATION RATES ARE GIVEN ON THE PLANS.

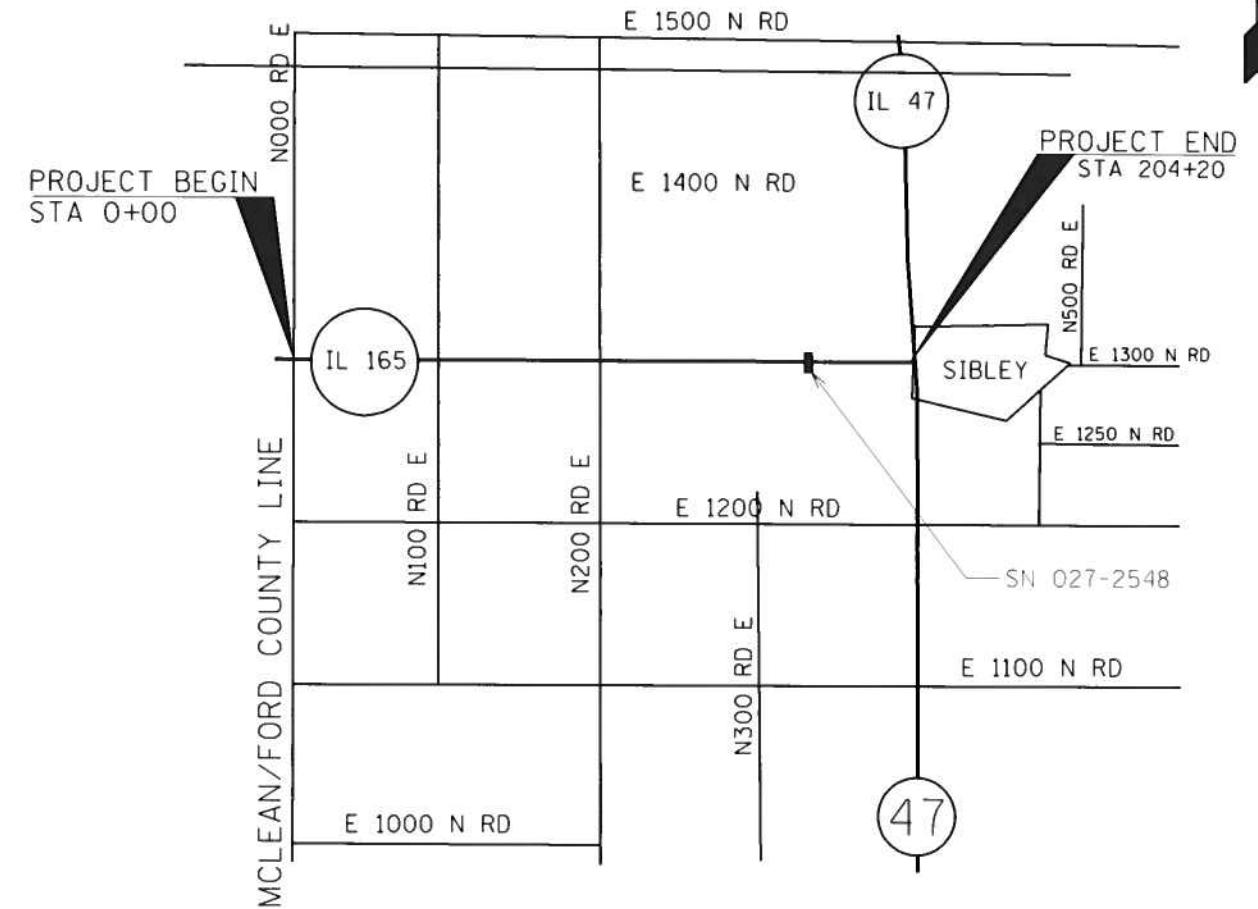
ALL ELEVATIONS REFERRING TO U.S.G.S. MEAN SEA LEVEL DATUM.

ANY REFERENCE TO A STANDARD IN THESE PLANS SHALL BE INTERPRETED TO MEAN THE EDITION AS INDICATED BY THE SUBNUMBER SHOWN IN THE LIST OF STANDARDS OR THE COPY INCLUDED IN THESE PLANS.

THE FOLLOWING RATES OF APPLICATION HAVE BEEN USED IN CALCULATING PLAN QUANTITIES:

GRANULAR MATERIALS	2.05	TONS / CU YD
HMA RESURFACING	112	LBS / SQ YD / IN
SHORT TERM PAVEMENT MARKING	10	FT /100 FT OF APPLICATION
MIX FOR CRACKS, JTS & FLGWYS	0.0003	TONS / SQ YD
LEVEL BINDER (HAND METHOD)	0.0005	TONS / SQ YD

THE CONTRACTOR SHALL CONTACT JULIE AT LEAST 48 HOURS PRIOR TO EXCAVATION TO DETERMINE WHICH UTILITIES ARE IN THE AREA.



STATE OF ILLINOIS
DEPARTMENT OF TRANSPORTATION
DISTRICT THREE
AS BUILT INFORMATION

SUPERVISING CONSTRUCTION FIELD ENGINEER

RESIDENT ENGINEER / TECHNICIAN

START & END DATES
OF CONSTRUCTION:

INSPECTORS:

STATE OF ILLINOIS
DEPARTMENT OF TRANSPORTATION
DISTRICT THREE

PREPARED BY: *Don Bonin*
DISTRICT STUDIES & PLANS ENGINEER

DATE: 3-20-19

EXAMINED BY: *Hyle Vidiga AH*
DISTRICT CONSTRUCTION ENGINEER
Michael Shat CN
DISTRICT MATERIALS ENGINEER

Tom H. [Signature]
DISTRICT OPERATIONS ENGINEER

STATE OF ILLINOIS
DEPARTMENT OF TRANSPORTATION

GENERAL NOTES

SCALE: SHEET OF SHEETS STA. TO STA.

F.A.S. RTE.	SECTION	COUNTY	TOTAL SHEETS	SHEET NO.
2484	(128)RS-3	FORD	8	2
ILLINOIS FED. AID PROJECT			CONTRACT NO. 66A03	

MODIFIED: 3/20/19
 FILE NAME: L:\pwworking\jcalderoni\17384\173866A03-1\173866A03.dgn

CONSTR. CODE
80% FED - 20% STATE
STP FUNDING
ROADWAY
0005
RURAL

CODE NO.	ITEM	UNIT	TOTAL QUANTITY	
20400800	FURNISHED EXCAVATION	CU YD	28	28
40600290	BITUMINOUS MATERIALS (TACK COAT)	POUND	33693	33693
40600400	MIXTURE FOR CRACKS, JOINTS, AND FLANGEWAYS	TON	15	15
40600527	LEVELING BINDER (HAND METHOD), 1L-9.5FG, N50	TON	25	25
40600627	LEVELING BINDER (MACHINE METHOD), 1L-9.5FG, N50	TON	3494	3494
40600990	TEMPORARY RAMP	SQ YD	100	100
40603415	HOT-MIX ASPHALT SURFACE COURSE, 1L-9.5FG, N50	TON	4193	4193
40800050	INCIDENTAL HOT-MIX ASPHALT SURFACING	TON	241	241
44000155	HOT-MIX ASPHALT SURFACE REMOVAL, 1 1/2"	SQ YD	830	830
44000160	HOT-MIX ASPHALT SURFACE REMOVAL, 2 3/4"	SQ YD	49916	49916
48102100	AGGREGATE WEDGE SHOULDER, TYPE B	TON	1066	1066
* 66700205	PERMANENT SURVEY MARKERS, TYPE I	EACH	2	2
67100100	MOBILIZATION	L SUM	1	1
70100460	TRAFFIC CONTROL AND PROTECTION, STANDARD 701306	L SUM	1	1

* SPECIALTY ITEM

MODEL: \\MODELM\MPITS
 FILE: \\MODELM\csp\work\spw\idb\calderon\60173841D\66A03-1H-DETAILS.dgn

USER NAME = calderonl	DESIGNED -	REVISED -
	DRAWN -	REVISED -
PLOT SCALE = 100.0000 ' / in.	CHECKED -	REVISED -
PLOT DATE = 3/19/2019	DATE -	REVISED -

**STATE OF ILLINOIS
DEPARTMENT OF TRANSPORTATION**

SUMMARY OF QUANTITIES

SCALE: SHEET OF SHEETS STA. TO STA.

F.A.S. RTE.	SECTION	COUNTY	TOTAL SHEETS	SHEET NO.
2484	(128)RS-3	FORD	8	3
CONTRACT NO. 66A03			ILLINOIS FED. AID PROJECT	

CONSTR. CODE
80% FED - 20% STATE
STP FUNDING
ROADWAY
0005
RURAL

CODE NO.	ITEM	UNIT	TOTAL QUANTITY	
70300100	SHORT TERM PAVEMENT MARKING	FOOT	6126	6126
70300150	SHORT TERM PAVEMENT MARKING REMOVAL	SQ FT	681	681
70300220	TEMPORARY PAVEMENT MARKING - LINE 4"	FOOT	43592	43592
70300240	TEMPORARY PAVEMENT MARKING - LINE 6"	FOOT	5105	5105
* 78008210	POLYUREA PAVEMENT MARKING TYPE I - LINE 4"	FOOT	43592	43592
* 78008230	POLYUREA PAVEMENT MARKING TYPE I - LINE 6"	FOOT	5105	5105
* 78008270	POLYUREA PAVEMENT MARKING TYPE I - LINE 24"	FOOT	17	17
* 78100100	RAISED REFLECTIVE PAVEMENT MARKER	EACH	255	255
78300200	RAISED REFLECTIVE PAVEMENT MARKER REMOVAL	EACH	255	255
X0327980	PAVEMENT MARKING REMOVAL - WATER BLASTING	SQ FT	17083	17083
X4401198	HOT-MIX ASPHALT SURFACE REMOVAL, VARIABLE DEPTH	SQ YD	734	734
Z0030850	TEMPORARY INFORMATION SIGNING	SQ FT	42	42
Z0033700	LONGITUDINAL JOINT SEALANT	FOOT	20420	20420
Z0034105	MATERIAL TRANSFER DEVICE	TON	7687	7687

* SPECIALTY ITEM

MODEL: \\MODELMARKETS
 FILE: \\marks_cad\work\pavement\calderon\601738410366A03-1H-DETAILS.dgn

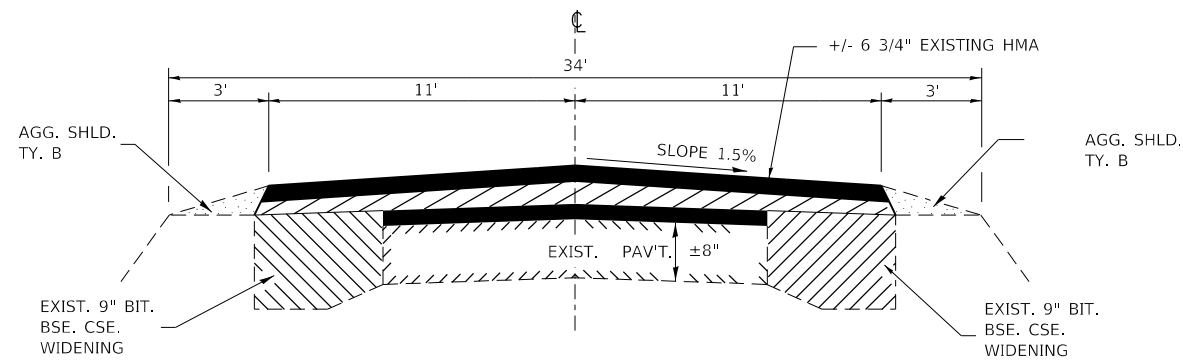
USER NAME = calderon1	DESIGNED -	REVISED -
	DRAWN -	REVISED -
PLOT SCALE = 100.0000 ' / in.	CHECKED -	REVISED -
PLOT DATE = 3/19/2019	DATE -	REVISED -

**STATE OF ILLINOIS
DEPARTMENT OF TRANSPORTATION**

SUMMARY OF QUANTITIES

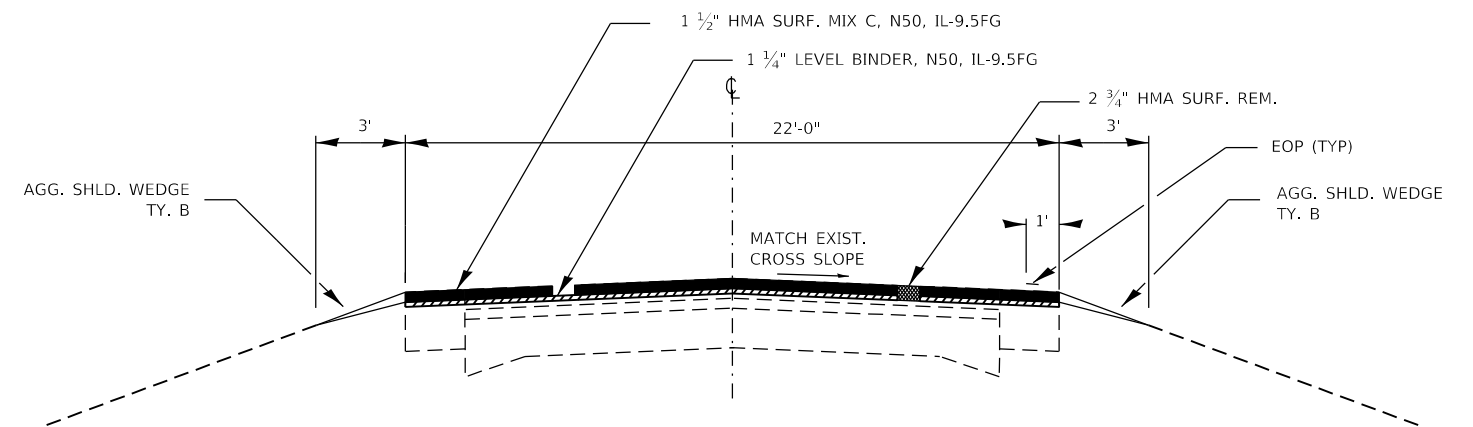
SCALE: SHEET OF SHEETS STA. TO STA.

F.A.S. RTE.	SECTION	COUNTY	TOTAL SHEETS	SHEET NO.
2484	(128)RS-3	FORD	8	4
CONTRACT NO. 66A03			ILLINOIS FED. AID PROJECT	



EXISTING TYPICAL SECTION

STA. 0+00 TO STA. 204+20



PROPOSED TYPICAL SECTION

STA. 0+00 TO 204+20

PERMANENT SURVEY MARKER SCHEDULE

GPS NUMBER	DESCRIPTION	EXISTING MONUMENT TYPE	PROPOSED MONUMENT TYPE	MONUMENT RECORD TO BE RECORDED	RESPONSIBILITY
165003	N QTR COR SEC 31 T25N R7E OF THE 3RD PM	BRASS DISK	MAG NAIL	NO	2
165008	N QTR COR SEC 33 T25N R7E OF THE 3RD PM	BRASS DISK	MAG NAIL	NO	2
165009	NW COR SEC 34 T25N R7E OF THE 3RD PM	BRASS DISK	TYPE 1	YES*	1
165010	N QTR COR SEC 34 T25N R7E OF THE 3RD PM	BRASS DISK	TYPE 1	YES*	1

COORDINATES ON THE LISTED MONUMENTS ARE KNOWN. PRE CONSTRUCTION TIES BY THE R.E. ARE NOT REQUIRED. UNKNOWN MONUMENTS SET BY OTHERS MAY EXIST. IF FOUND, THE R.E. MUST TIE AND REQUEST PLATS AND PLANS PERSONNEL TO GPS ANY MONUMENT(S) SUBJECT TO DAMAGE OR DESTRUCTION FROM THE RESURFACING WORK, AND INFORM THEM TO RESET THE MONUMENT(S) WHEN RESURFACING IS COMPLETE. THE R.E. IS TO INFORM THE PLATS AND PLANS SECTION TO SEARCH FOR ADDITIONAL MONUMENTS IF THE JOB LIMITS ARE EXPANDED DURING CONSTRUCTION. UPON PAVING COMPLETION, THE R.E. WILL DIRECT PLATS AND PLANS PERSONNEL TO STAKE THE LOCATIONS FOR TYPE 1 MONUMENT CORING. * PLATS AND PLANS WILL PREPARE AND RECORD THE REQUIRED MONUMENT RECORDS.

RESPONSIBILITY:

- 1) RESIDENT TO RE-ESTABLISH MONUMENT (PAY ITEM REQUIRED. PERMANENT SURVEY MARKER, TYPE 1)
- 2) PLATS AND PLANS TO RE-ESTABLISH MONUMENT

HMA MIXTURE REQUIREMENT TABLE

LOCATION(S):	ENTIRE PROJECT	ENTIRE PROJECT	ENTIRE PROJECT
MIXTURE USE(S):	HMA LEVEL BINDER	HMA SURFACE COURSE	INCIDENTAL HMA
BINDER GRADE (PG):	PG 64-22	PG 64-22	PG 64-22
DESIGN AIR VOIDS:	4.0% @ N50	4.0% @ N50	4.0% @ N50
MIXTURE COMPOSITION: (MIXTURE GRADATION)	IL-9.5FG	IL-9.5FG	IL-9.5FG
FRICTION AGGREGATE:		MIXTURE C	
MIXTURE WEIGHT:	112.0 LB/SY/IN	112.0 LB/SY/IN	112.0 LB/SY/IN
QUALITY MANAGEMENT PROGRAM:	QCP	QCP	QCQA
SUBLOT SIZE:	1000 TONS	1000 TONS	N/A
DENSITY TEST METHOD:	CORES	CORES	SATISFACTION OF ENGINEER

MODEL: \\MODELS\MARMS FILE: \\MARMS\cadd\work\shld\shld\calderon\1738410366A03-shd-DETAILS.dgn

USER NAME = calderon	DESIGNED -	REVISED -
	DRAWN -	REVISED -
PLOT SCALE = 100.0000' / in.	CHECKED -	REVISED -
PLOT DATE = 3/19/2019	DATE -	REVISED -

**STATE OF ILLINOIS
DEPARTMENT OF TRANSPORTATION**

TYPICAL SECTION

SCALE: SHEET OF SHEETS STA. TO STA.

F.A.S. RTE.	SECTION	COUNTY	TOTAL SHEETS	SHEET NO.
2484	(128)RS-3	FORD	8	5
CONTRACT NO. 66A03			ILLINOIS FED. AID PROJECT	

MAINLINE SCHEDULE												
STA. TO STA.		LENGTH	WIDTH	HMA SURF REM 2 3/4"	HMA SURF CSE N50 IL-9.5FG MIX C	LEVEL BINDER (MM) N50 IL-9.5FG MIX C	LONG JOINT SEAL (1 APP)	LEVEL BINDER (HM)	MIX FOR JTS, CRACKS & FLGWYS	BIT MAT'L TACK COAT	AGG SHLD WEDGE SHLDR TY B	TEMP RAMP
		FT	FT	SQ YD	TONS	TONS	FOOT	TONS	TONS	POUND	TONS	SQ YD
0+00	204+20	20420	22	49,915.6	4192.9	3494.1	20420	25.0	15	33,693.0	1065.9	37
TOTALS				49,916	4,193	3,494	20,420	25.0	15	33,693	1,066	37

* LONG JOINT SEAL UNDER CENTERLINE SURFACE LIFT

SIDEROAD & ENTRANCES SCHEDULE																	
STA *	SIDE	LOCATION	SURF TYPE	WIDTH FT	LENGTH FT	AREA SQ YD	HMA SURF VAR DEPTH	HMA SURF REM 1 1/2"	INC HMA SURF	TEMP. RAMP	BIT. MAT. TACK CT.	FURN EXCAV **	EROS CNTRL BLANKET	FERTILIZER			SEED CL 2A
							SQ YD	SQ YD	TONS	SQ YD	POUND	CU YD	SQ YD	NITRO NUTR POUND	PHOS NUTR POUND	POT NUTR POUND	ACRE
00+31	L	N 000 EAST RD	HMA	17	30	105.0	105.0		16.2	9.4	70.9	4.0	18	0.3	0.3	0.3	0.004
00+31	R	N 000 EAST RD	HMA	23	22	77.0	77.0		11.9	12.8	52.0	4.0	18	0.3	0.3	0.3	0.004
17+48	R	CE	HMA	22	10	41.7		41.7	6.4		18.8						
46+58	L	N 100 EAST RD	HMA	17	30	145.0	145.0		22.3	9.4	97.9	4.0	18	0.3	0.3	0.3	0.004
46+58	R	N 100 EAST RD	HMA	17	30	140.0	140.0		21.6	9.4	94.5	4.0	18	0.3	0.3	0.3	0.004
52+81	L	PE	HMA	15	10	16.7		16.7	2.6		7.5						
52+81	L	MBTO	HMA	5	101	56.1		56.1	8.6		25.3	1.3	11	0.2	0.2	0.2	0.002
68+22	R	PE	HMA	24	10	38.3		38.3	5.9		17.3						
68+30	L	MBTO	HMA	5	75	41.7		41.7	6.4		18.8	1.0	8	0.1	0.1	0.1	0.002
100+10	L	N 200 EAST RD	HMA	21	30	138.3	138.3		21.3	11.7	93.4	4.0	18	0.3	0.3	0.3	0.004
100+10	R	N 200 EAST RD	HMA	19	30	128.3	128.3		19.8	10.6	86.6	4.0	18	0.3	0.3	0.3	0.004
124+20	L	MBTO	HMA	5	54	30.0		30.0	4.6		13.5	0.7	6	0.1	0.1	0.1	0.001
124+20	R	PE	HMA	23	5	15.6		15.6	2.4		7.0						
169+31	R	PE	HMA	13	10	22.2		22.2	3.4		10.0						
173+97	L	CEMETARY	HMA	23	10	38.9		38.9	6.0		17.5						
188+00	R	CE	HMA	78	12	112.7		112.7	17.4		50.7						
189+47	R	PE	HMA	17	12	33.3		33.3	5.1		15.0						
189+68	L	PE	HMA	16	15	50.0		50.0	7.7		22.5						
194+83	L	MBTO	HMA	4	91	40.4		40.4	6.2		18.2	1.2	10	0.2	0.2	0.2	0.002
194+83	L	PE	HMA	10	20	60.0		60.0	9.2		27.0						
197+91	R	CE	HMA	31	10	42.8		42.8	6.6		19.3						
200+75	R	CE	HMA	40	10	59.4		59.4	9.2		26.8						
204+50	R	CE	HMA	19	10	40.0		40.0	6.2		18.0						
204+91	L	CE	HMA	35	17	89.7		89.7	13.8		40.4						
TOTALS							734	830	241	63	869	28	142	3	3	3	0.03

* NOTE: ALL STATION ARE APPROXIMATE +/-

** FURNISHED EXCAVATION AREAS TO BE SEEDED AND FERTILIZED AS DIRECTED BY THE RESIDENT.

SEEDING, FERTILIZER AND EROSION CONTROL BLANKET ITEMS ARE INCLUDED IN THE COST OF FURNISHED EXCAVATION. REFER TO RESTORATION OF WORK AREA SPECIAL PROVISION.

PAVEMENT MARKING SCHEDULE												
LOCATION	POLYUREA TY 1				TEMPORARY PAVEMENT MARKING		PAVT MARK REMOVAL (WATER BLAST)	SHORT-TERM PAVT MARKING	SHORT-TERM PAVT MARK REM	RAISED REFLECTIVE PVMT MARKERS		
	4" WHITE	4" YELLOW	6" YELLOW	24" WHITE	4"	6"				INSTALL	REMOVAL	
	(1 APP)				(1 APP)					(1 APP)	(3 APP)	(1 APP)
STA	TO	FOOT	FOOT	FOOT	FOOT	FOOT	FOOT	SQ FT	FOOT	SQ FT	EACH	EACH
0+00	TO 204+20	40,840		5,105	17	40,840	5,105	16,166	6,126	681	255	255
NO PASSING ZONES (1)												
149+76	- 156+60		684			684		228				
159+98	- 165+31		533			533		178				
165+31	- 172+61		730			730		243				
179+15	- 187+20		805			805		268				
RURAL TOTAL		40,840	2,752	5,105	17	43,592	5,105	17,083	6,126	681	255	255

(1) R.E. TO VERIFY NO PASSING ZONES PRIOR TO MILLING OPERATION

MODEL: \\MODELMARIES\FILE: \\maries\cadd\work\sidrdb\calderon\017384\0366A03-31-2019\DETAILS.dgn

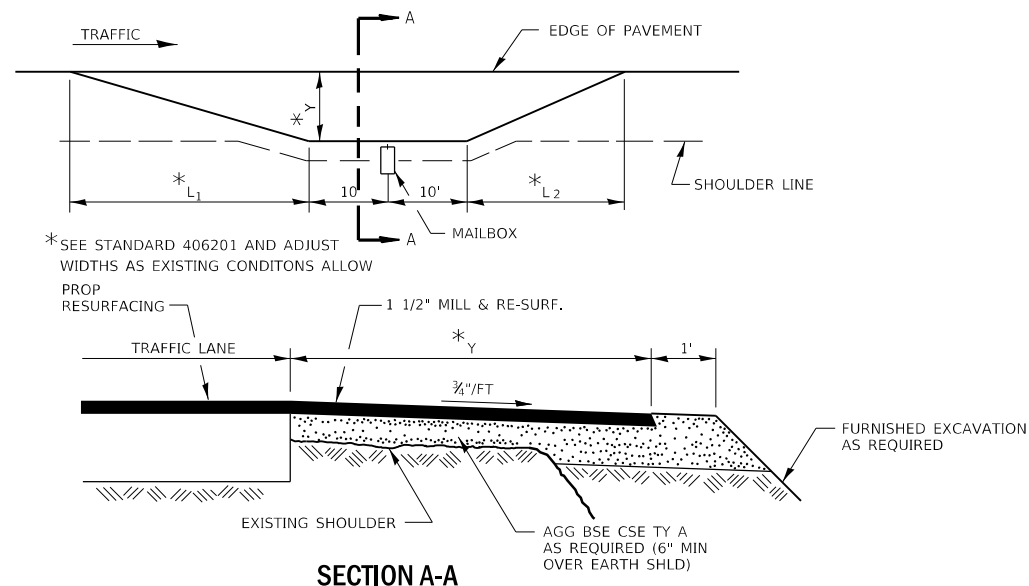
USER NAME = calderon	DESIGNED -	REVISED -
	DRAWN -	REVISED -
PLOT SCALE = 100.0000' / in.	CHECKED -	REVISED -
PLOT DATE = 3/19/2019	DATE -	REVISED -

STATE OF ILLINOIS
DEPARTMENT OF TRANSPORTATION

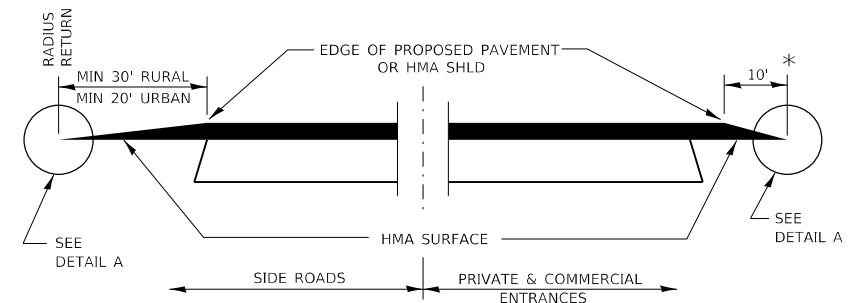
SCHEDULES

SCALE: SHEET OF SHEETS STA. TO STA.

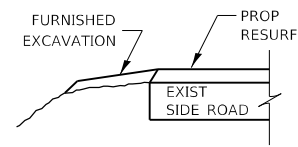
F.A.S. RTE.	SECTION	COUNTY	TOTAL SHEETS	SHEET NO.
2484	(128)RS-3	FORD	8	6
CONTRACT NO. 66A03				
ILLINOIS FED. AID PROJECT				



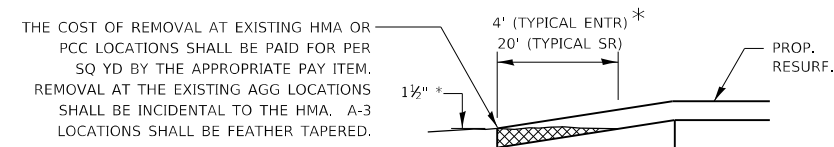
RURAL MAILBOX TURNOUT DETAILS



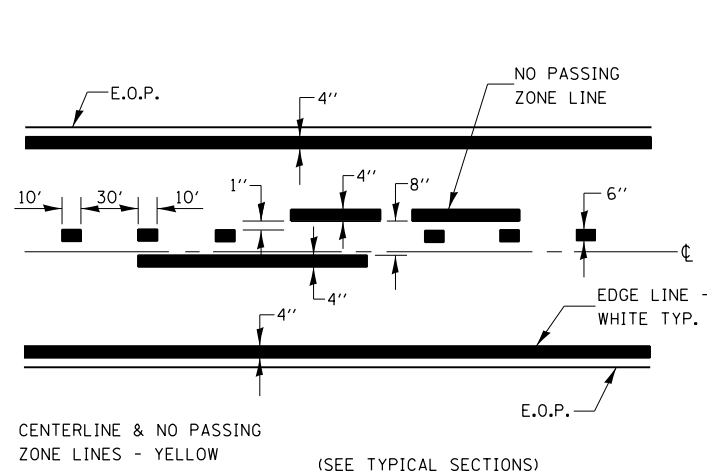
**SECTION A-A
DETAILS AT ENTRANCES & SIDE ROADS**



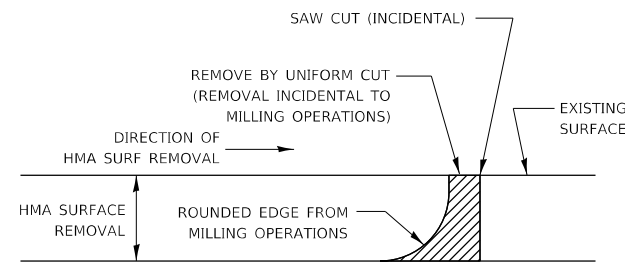
SECTION B-B



* SIDEROADS SHALL BE FEATHER TAPERED TO A MAX OF 1/2" OR AS EXISTING CONDITIONS ALLOW.

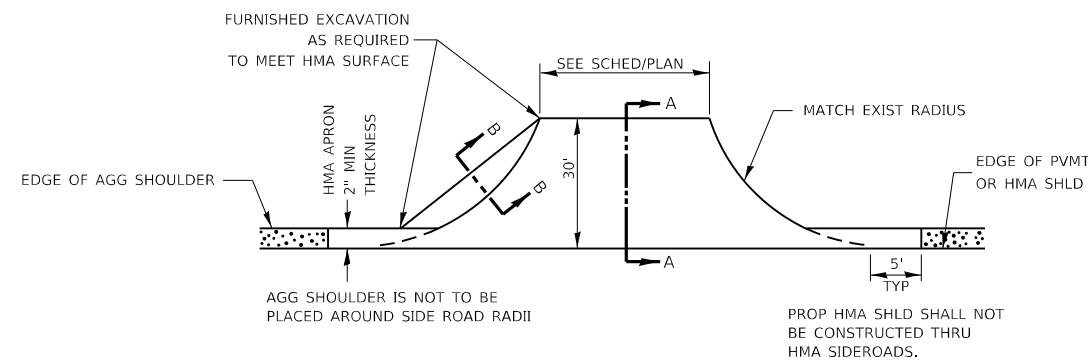


PAVEMENT MARKING

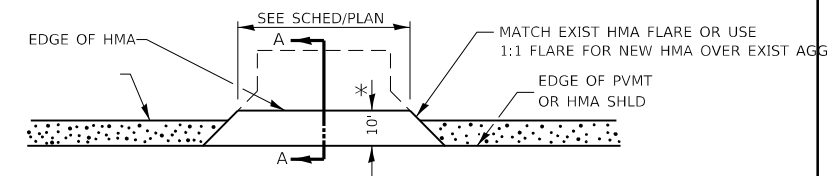


NOTE:
WHEN MILLING OPERATIONS PRODUCE A ROUNDED EDGE, THEN A SAW CUT SHALL BE USED TO MANUFACTURE A PERPENDICULAR EDGE AS SHOWN IN THE DETAIL. THE ENGINEER SHALL BE THE SOLE JUDGE CONCERNING THE USE OF THIS DETAIL

HMA DETAIL AT BUTT JOINTS



PLAN AT SIDE ROADS



PLAN AT PRIVATE & COMMERCIAL ENTRANCES

(DO NOT RESURFACE FIELD ENTRANCES)

* PROPOSED HMA RESURFACING AT PUBLIC EDUCATIONAL FACILITY ENTRANCES SHALL BE EXTENDED TO THE RIGHT-OF-WAY LIMITS.

MODEL: \\MODELS\MARIS
FILE: \\MARIS_CAD\work\sideb\calderon\14017384\1D366A03-314-DETAILS.dwg

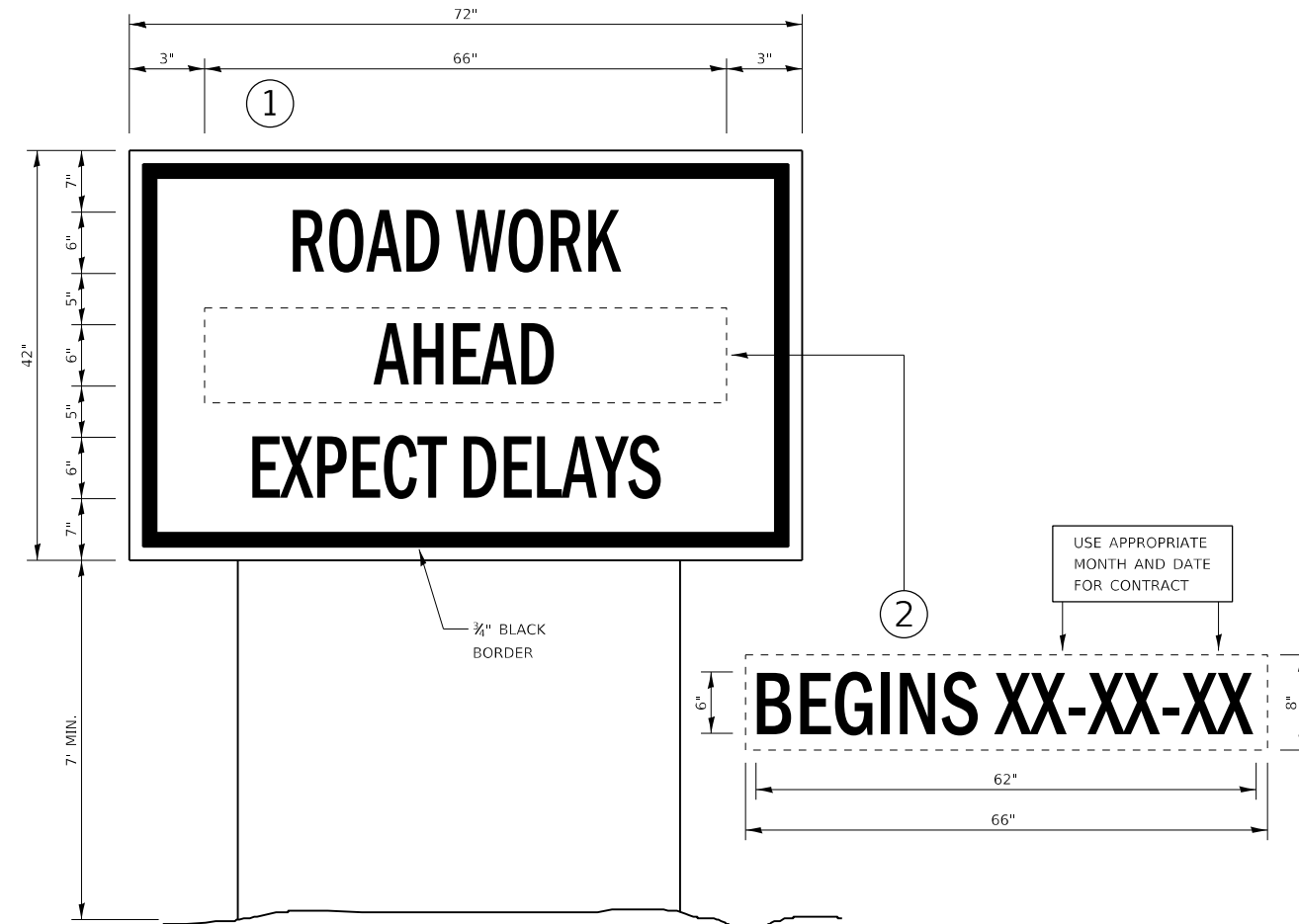
USER NAME = calderon1	DESIGNED -	REVISED -
	DRAWN -	REVISED -
PLOT SCALE = 100.0000' / in.	CHECKED -	REVISED -
PLOT DATE = 3/19/2019	DATE -	REVISED -

**STATE OF ILLINOIS
DEPARTMENT OF TRANSPORTATION**

SCHEDULES

SCALE:	SHEET	OF	SHEETS	STA.	TO	STA.
--------	-------	----	--------	------	----	------

F.A.S. RTE.	SECTION	COUNTY	TOTAL SHEETS	SHEET NO.
2484	(128)RS-3	FORD	8	7
CONTRACT NO. 66A03			ILLINOIS FED. AID PROJECT	



TEMPORARY INFORMATION SIGNING

NOTES:

1. USE 6" D BLACK LETTERING ON FLUORESCENT ORANGE BACKGROUND.
2. ERECT SIGNS AT LOCATIONS IN ADVANCE OF THE "ROAD CONSTRUCTION AHEAD" SIGNS AS DIRECTED BY THE ENGINEER.
3. ERECT SIGN ① WITH INSTALLED PANEL ② A MINIMUM OF ONE WEEK PRIOR TO THE START OF THE LANE CLOSURE.
4. REMOVE PANEL ② ON THAT DATE.
5. SEE SPECIAL PROVISION "TEMPORARY INFORMATION SIGNING" FOR ADDITIONAL INFORMATION.
6. WILL BE PAID FOR PER SQ FT AS "TEMPORARY INFORMATION SIGNING". EACH SIGN = 21 SQ FT AND THE DATE PANEL ② WILL NOT BE MEASURED SEPARATELY FOR PAYMENT.

MODEL: \\MODELS\MARIS
 FILE: \\maris\csp\work\sp\idba\calderon\60172841D\66A03-314-DETAILS.dgn

USER NAME = calderon1	DESIGNED -	REVISED -
	DRAWN -	REVISED -
PLOT SCALE = 100.0000' / in.	CHECKED -	REVISED -
PLOT DATE = 3/19/2019	DATE -	REVISED -

**STATE OF ILLINOIS
DEPARTMENT OF TRANSPORTATION**

DETAILS

SCALE: SHEET OF SHEETS STA. TO STA.

F.A.S. RTE.	SECTION	COUNTY	TOTAL SHEETS	SHEET NO.
2484	(128)RS-3	FORD	8	8
CONTRACT NO. 66A03				
ILLINOIS FED. AID PROJECT				