

STATE OF ILLINOIS  
DEPARTMENT OF TRANSPORTATION

F.A.P. ATE.	SECTION	COUNTY	TOTAL SHEETS	SHEET NO.
IDOT		EDGAR	29	1
		ILLINOIS	CONTRACT NO. 70D18	

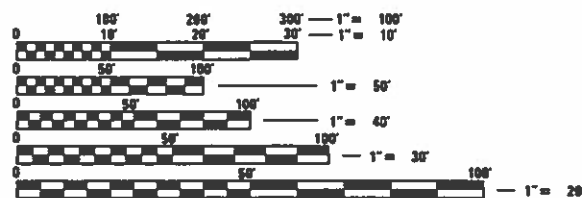
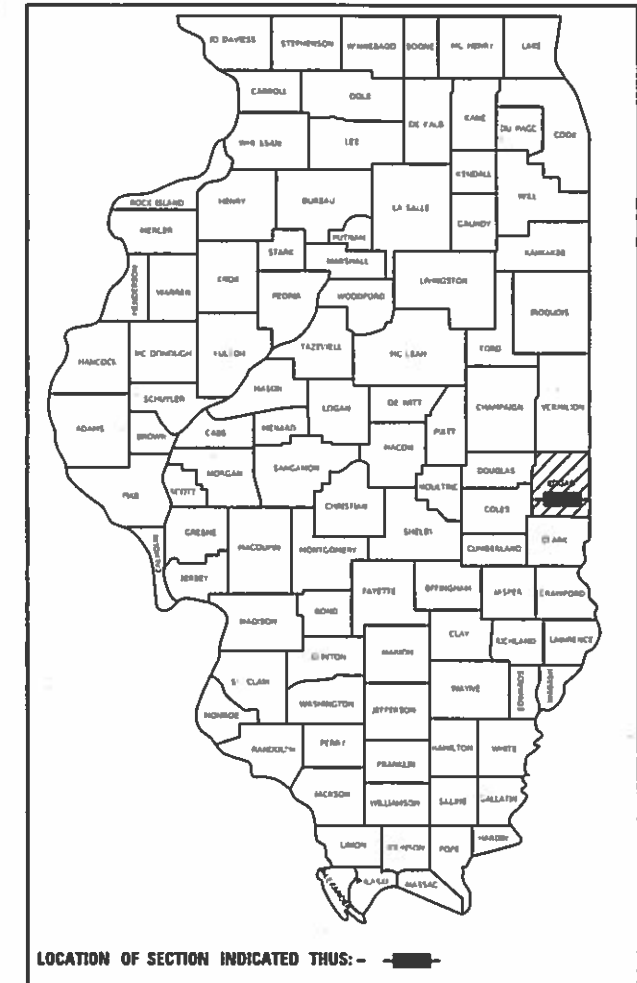
D-95-007-18

FOR INDEX OF SHEETS, SEE SHEET NO. 2  
FOR SUMMARY OF QUANTITIES, SEE SHEETS NO. 3-7

# PROPOSED HIGHWAY PLANS

ROUTE: IDOT BLVD  
SECTION: D5 LOT IMPROVEMENT 2019-1  
PROJECT: PARKING LOT IMPROVEMENTS  
EDGAR COUNTY

C-95-019-18

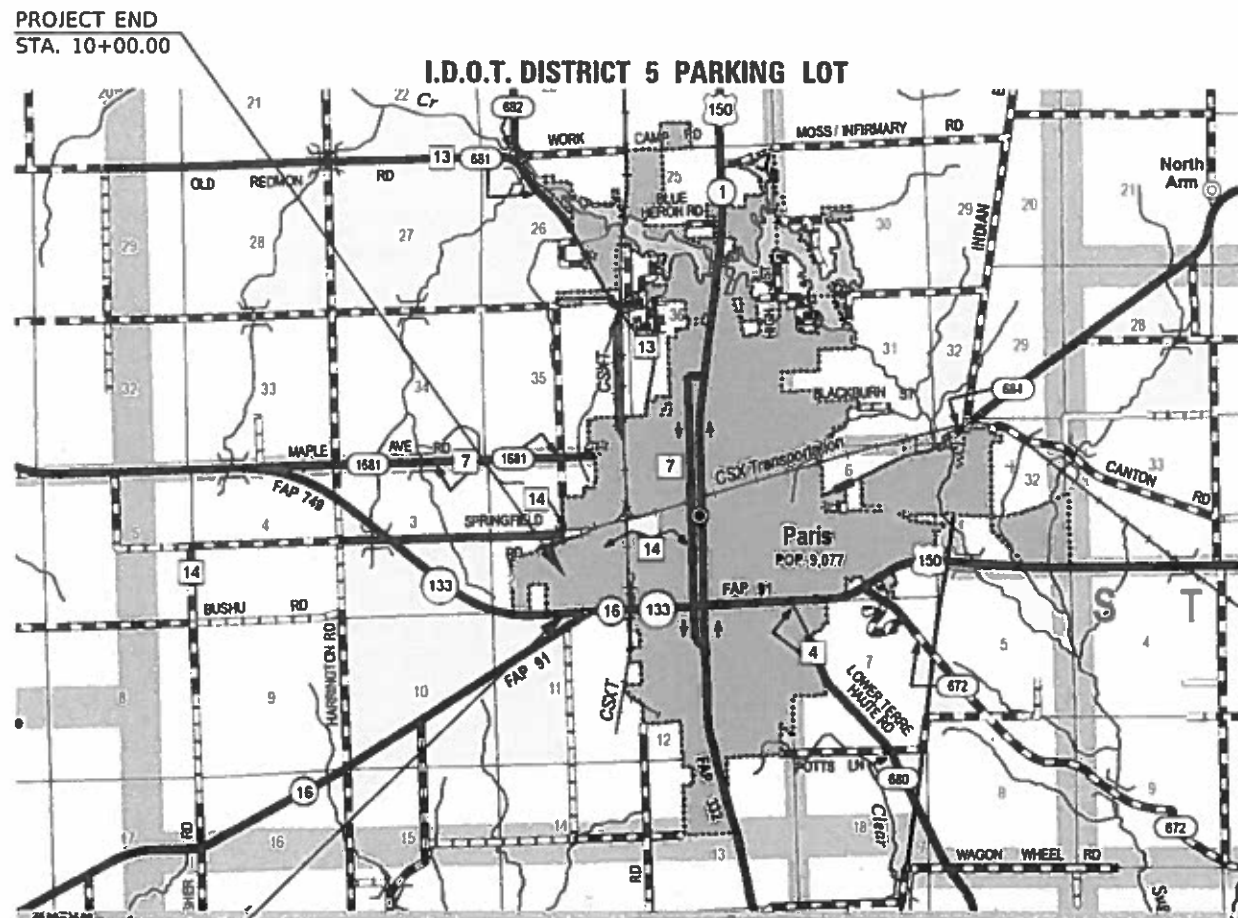


FULL SIZE PLANS HAVE BEEN PREPARED USING STANDARD ENGINEERING SCALES. REDUCED SIZED PLANS WILL NOT CONFORM TO STANDARD SCALES. IN MAKING MEASUREMENTS ON REDUCED PLANS, THE ABOVE SCALES MAY BE USED.

J.U.L.I.E.  
JOINT UTILITY LOCATION INFORMATION FOR EXCAVATORS  
1-800-892-0123  
OR 811

PROJECT ENGINEER: NANCY FASIG  
PROJECT MANAGER: BRIAN J. HOGAN  
DESIGNER: ROBERT A. HODGSON  
PHONE NUMBER: (217)-465-4181

CONTRACT NO. 70D18



PROJECT START  
STA. 00+00.00

PROJECT END  
STA. 10+00.00

GROSS LENGTH = 1,000.00 FT. = 0.19 MILE  
NET LENGTH = 1,000.00 FT. = 0.19 MILE

STATE OF ILLINOIS  
DEPARTMENT OF TRANSPORTATION

SUBMITTED 03/18 2019  
Kensil A. Barnett  
REGIONAL ENGINEER

May 10 2019  
ENGINEER OF DESIGN AND ENVIRONMENT

May 10 2019  
DIRECTOR OF HIGHWAYS PROJECT IMPLEMENTATION

PRINTED BY THE AUTHORITY  
OF THE STATE OF ILLINOIS

### INDEX OF SHEETS

SHEET NO.	DESCRIPTION
1	COVER SHEET
2	INDEX OF SHEETS
2	LIST OF STANDARDS
2	GENERAL NOTES
3-7	SUMMARY OF QUANTITIES
8-9	TYPICAL SECTIONS
10-16	SCHEDULES OF QUANTITIES
17	PLAN SHEET OVERVIEW
18-20	REMOVAL PLAN SHEETS
21-23	PROPOSED PLAN SHEETS
24-26	EROSION CONTROL PLAN SHEETS
27	DISTRICT 5 DETAIL NO. 54248510 - CONCRETE COLLAR
28	DISTRICT 5 DETAIL NO. 606AAAAA - GUTTER DEPRESSION AT INLETS, CATCH BASINS AND MANHOLES
29	DISTRICT 5 DETAIL NO. 61101011A - FIELD TILE SYSTEMS (TREATMENT OF EXISTING)

### LIST OF STANDARDS

STANDARD NO.	DESCRIPTION
000001 - 07	STANDARD SYMBOLS, ABBREVIATIONS AND PATTERNS
001001 - 02	AREAS OF REINFORCEMENT BARS
001006	DECIMAL OF AN INCH AND OF A FOOT
280001-07	TEMPORARY EROSION CONTROL SYSTEMS
420701-03	PAVEMENT WELDED WIRE REINFORCEMENT
442101-09	CLASS B PATCHES
442201-03	CLASS C AND D PATCHES
602306-03	INLET, TYPE B
602401-06	PRECAST MANHOLE, TYPE A, 4' (1.22 m) DIAMETER
602402-02	PRECAST MANHOLE, TYPE A, 5' (1.52 m) DIAMETER
602406-10	PRECAST MANHOLE, TYPE A, 6' (1.83 m) DIAMETER
602601-06	PRECAST REINFORCED CONCRETE FLAT SLAB TOP
602701-02	MANHOLE STEPS
604001-04	FRAME AND LIDS, TYPE 1
604016-04	FRAME AND GRATE, TYPE 4
604051-04	FRAME AND GRATE, TYPE 11
606001-07	CONCRETE CURB TYPE B AND COMBINATION CONCRETE CURB AND GUTTER
664001-02	CHAIN LINK FENCE
701901-08	TRAFFIC CONTROL DEVICES

### GENERAL NOTES

GN 105.07C  
 EXISTING STATE-OWNED AND MAINTAINED UNDERGROUND UTILITY FACILITIES EXIST WITHIN THE ROW. THE DEPARTMENT IS NOT A MEMBER OF JULIE AND DOES NOT LOCATE IT'S OWN FACILITIES. THE CONTRACTOR SHALL BE RESPONSIBLE AT THEIR OWN EXPENSE FOR SECURING AN APPROVED LOCATING FIRM TO LOCATE ALL EXISTING IDOT UNDERGROUND FACILITIES PRIOR TO COMMENCING ANY EXCAVATION, PER THE REQUIREMENTS OF ARTICLE 803 OF THE STANDARD SPECIFICATIONS. UTILITY LOCATES MAY ALSO BE REQUIRED OUTSIDE THE PROJECT LIMITS, SUCH AS FOR TRAFFIC CONTROL SIGNING AND OTHER ITEMS. THE CONTRACTOR MAY OBTAIN, ON REQUEST, PLANS OF EXISTING ELECTRICAL FACILITIES FROM THE DEPARTMENT. FOR FURTHER INFORMATION, THE CONTRACTOR MAY CONTACT THE DISTRICT TRAFFIC OPERATIONS ENGINEER, GARY SIMS, AT 217-251-4859.

G.N.-105.09A  
 ALL ELEVATIONS SHOWN IN THE PLANS ARE BASED ON NORTH AMERICAN VERTICAL DATUM OF 1988. (NAVD 88)

G.N.- 442B - PATCHING SCHEDULES  
 THE PATCHING SCHEDULES INCLUDED IN THE PLANS REPRESENT THE BEST INFORMATION AVAILABLE AT THE TIME OF COMPLETION OF THE PLANS FOR LETTING. VARIATIONS IN LOCATION AND SIZES OF THE FULL-DEPTH AND PARTIAL-DEPTH PATCHES MAY OCCUR.

G.N.- 551  
 EXISTING STORM SEWERS SHALL BE REMOVED IN ACCORDANCE WITH SECTION 551 OF THE STANDARD SPECIFICATIONS EXCEPT THAT THE CONTRACTOR WILL NOT BE REQUIRED TO SALVAGE ANY EXISTING SEWER PIPE.

NO COMMITMENTS.

**STATE OF ILLINOIS  
 DEPARTMENT OF TRANSPORTATION**

**INDEX OF SHEETS, GENERAL NOTES  
 & LIST OF HIGHWAY STANDARDS**

USER NAME = HodgsonRA	DESIGNED -	REVISED -
	DRAWN -	REVISED -
PLOT SCALE = 40.0000 ' / in.	CHECKED -	REVISED -
PLOT DATE = 3/18/2019	DATE -	REVISED -

SCALE: SHEET OF SHEETS STA. TO STA.

F.A.P. RTE.	SECTION	COUNTY	TOTAL SHEETS	SHEET NO.
IDOT	*	EDGAR	29	2
			CONTRACT NO. 70D18	
		ILLINOIS	FED. AID PROJECT	

\* D5 LOT IMPROVEMENT 2019-1

LOCATION OF WORK:

I.D.O.T. BOULEVARD

PARKING LOT

STA. 00+00.00 TO STA. 10+00.00

EDGAR COUNTY

FUNDING BREAKOUT:

STATE 100%

CONSTRUCTION TYPE CODE:

0044

CODE NO.	ITEM	UNIT	TOTAL QUANTITY	
20800150	TRENCH BACKFILL	CU YD	920.0	920.0
21101615	TOPSOIL FURNISH AND PLACE, 4"	SQ YD	365.0	365.0
25000110	SEEDING, CLASS 1A	ACRE	0.25	0.25
25000350	SEEDING, CLASS 7	ACRE	0.25	0.25
25000400	NITROGEN FERTILIZER NUTRIENT	POUND	22.5	22.5
25000500	PHOSPHORUS FERTILIZER NUTRIENT	POUND	22.5	22.5
25000600	POTASSIUM FERTILIZER NUTRIENT	POUND	22.5	22.5
25100115	MULCH, METHOD 2	ACRE	0.25	0.25
28000250	TEMPORARY EROSION CONTROL SEEDING	POUND	25.0	25.0
28000500	INLET AND PIPE PROTECTION	EACH	23.0	23.0
42000060	WELDED WIRE REINFORCEMENT	SQ YD	277.0	277.0
44000500	COMBINATION CURB AND GUTTER REMOVAL	FOOT	295.0	295.0
44200956	CLASS B PATCHES, TYPE II, 9 INCH	SQ YD	8.0	8.0
44200964	CLASS B PATCHES, TYPE IV, 9 INCH	SQ YD	277.0	277.0

\* DENOTES SPECIALTY ITEM

MODEL: 4\MODEL\M\MS  
FILE: 4\MS\44200964.dwg  
C:\ProgramData\Autodesk\LT2019\Help\Content\2D Objects\2D\DOT\Office\DOT\Documents\DOT\_Office\DOT\44200964.dwg

USER NAME = HodgsonRA	DESIGNED -	REVISED -
PLOT SCALE = 40.0000 ' / in.	DRAWN -	REVISED -
PLOT DATE = 3/18/2019	CHECKED -	REVISED -
	DATE -	REVISED -

**STATE OF ILLINOIS  
DEPARTMENT OF TRANSPORTATION**

**SUMMARY OF QUANTITIES**

SCALE: SHEET OF SHEETS STA. TO STA.

F.A.P. RTE.	SECTION	COUNTY	TOTAL SHEETS	SHEET NO.
IDOT	*	EDGAR	29	3
CONTRACT NO. 70D18				
		ILLINOIS FED. AID PROJECT		



LOCATION OF WORK:

I.D.O.T. BOULEVARD

PARKING LOT

STA. 00+00.00 TO STA. 10+00.00

EDGAR COUNTY

FUNDING BREAKOUT:

STATE 100%

CONSTRUCTION TYPE CODE:

0044

CODE NO.	ITEM	UNIT	TOTAL QUANTITY	
550A2730	STORM SEWERS, RUBBER GASKET, CLASS A, TYPE 3 15"	FOOT	8.0	8.0
550A2760	STORM SEWERS, RUBBER GASKET, CLASS A, TYPE 3 24"	FOOT	8.0	8.0
550B2310	STORM SEWERS, RUBBER GASKET, CLASS B, TYPE 1 10"	FOOT	200.0	200.0
55100100	STORM SEWER REMOVAL 4"	FOOT	4.0	4.0
55100200	STORM SEWER REMOVAL 6"	FOOT	16.0	16.0
55100300	STORM SEWER REMOVAL 8"	FOOT	156.0	156.0
55100400	STORM SEWER REMOVAL 10"	FOOT	236.0	236.0
55100500	STORM SEWER REMOVAL 12"	FOOT	544.0	544.0
55100700	STORM SEWER REMOVAL 15"	FOOT	256.0	256.0
55101200	STORM SEWER REMOVAL 24"	FOOT	8.0	8.0
60218400	MANHOLES, TYPE A, 4'-DIAMETER, TYPE 1 FRAME, CLOSED LID	EACH	6.0	6.0
60221100	MANHOLES, TYPE A, 5'-DIAMETER, TYPE 1 FRAME, CLOSED LID	EACH	5.0	5.0
60223800	MANHOLES, TYPE A, 6'-DIAMETER, TYPE 1 FRAME, CLOSED LID	EACH	1.0	1.0
60240210	INLETS, TYPE B, TYPE 1 FRAME, OPEN LID	EACH	2.0	2.0
* DENOTES SPECIALTY ITEM				

MODEL: \\MODEL\NAME  
 FILE: \\NAME: \\path\to\file\name.dwg  
 PROJECT: \\PROJECT\NAME  
 OFFICE: \\OFFICE\NAME  
 DATE: 3/18/2019

USER NAME = HodgsonRA	DESIGNED -	REVISED -
	DRAWN -	REVISED -
PLOT SCALE = 40,0000 ' / in.	CHECKED -	REVISED -
PLOT DATE = 3/18/2019	DATE -	REVISED -

**STATE OF ILLINOIS  
DEPARTMENT OF TRANSPORTATION**

**SUMMARY OF QUANTITIES**

SCALE: SHEET OF SHEETS STA. TO STA.

F.A.P. RTE.	SECTION	COUNTY	TOTAL SHEETS	SHEET NO.
IDOT	*	EDGAR	29	5
			CONTRACT NO. 70D18	
		ILLINOIS	FED. AID PROJECT	

LOCATION OF WORK:

I.D.O.T. BOULEVARD

PARKING LOT

STA. 00+00.00 TO STA. 10+00.00

EDGAR COUNTY

FUNDING BREAKOUT:

STATE 100%

CONSTRUCTION TYPE CODE:

0044

CODE NO.	ITEM	UNIT	TOTAL QUANTITY		
60240225	INLETS, TYPE B, TYPE 4 FRAME AND GRATE	EACH	1.0	1.0	
60240310	INLETS, TYPE B, TYPE 11 FRAME AND GRATE	EACH	13.0	13.0	
60500050	REMOVING CATCH BASINS	EACH	9.0	9.0	
60500060	REMOVING INLETS	EACH	16.0	16.0	
60603800	COMBINATION CONCRETE CURB AND GUTTER, TYPE B-6.12	FOOT	295.0	295.0	
61139800	STORM SEWERS (SPECIAL), 4"	FOOT	4.0	4.0	
61139900	STORM SEWERS (SPECIAL), 6"	FOOT	16.0	16.0	
61140000	STORM SEWERS (SPECIAL), 8"	FOOT	8.0	8.0	
61140100	STORM SEWERS (SPECIAL), 10"	FOOT	12.0	12.0	
*	66900200	NON-SPECIAL WASTE DISPOSAL	CU YD	1,465.0	1,465.0
*	66900530	SOIL DISPOSAL ANALYSIS	EACH	1.0	1.0
*	66901001	REGULATED SUBSTANCES PRE-CONSTRUCTION PLAN	LSUM	1.0	1.0
*	66901002	ON-SITE MONITORING OF REGULATED SUBSTANCES	CAL DA	7.0	7.0
*	66901003	REGULATED SUBSTANCES FINAL CONSTRUCTION REPORT	LSUM	1.0	1.0
* DENOTES SPECIALTY ITEM					

MODEL: \\MODEL\MATHS  
 FILE: \\models\pww\idm\com\ad\illinois\gov\pww\idm\Documents\IDOT\_Offices\District\_5\Projects\ID57001\B\CADD\BataCAD\Inres\ID57001B-sh-500.dgn

USER NAME = HodgsonRA	DESIGNED -	REVISED -
PLOT SCALE = 40,0000 ' / in.	DRAWN -	REVISIED -
PLOT DATE = 3/18/2019	CHECKED -	REVISED -
	DATE -	REVISED -

**STATE OF ILLINOIS  
DEPARTMENT OF TRANSPORTATION**

**SUMMARY OF QUANTITIES**

SCALE: SHEET OF SHEETS STA. TO STA.

F.A.P. RTE.	SECTION	COUNTY	TOTAL SHEETS	SHEET NO.
	*	EDGAR	29	6
			CONTRACT NO. 70D18	
		ILLINOIS	FED. AID PROJECT	

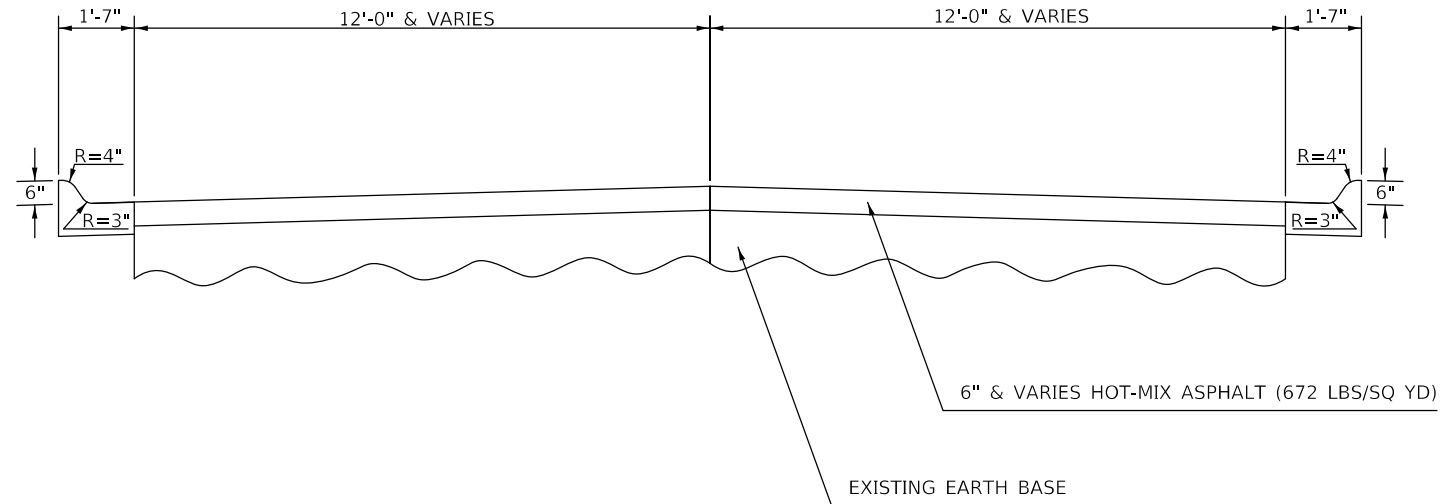
\* D5 LOT IMPROVEMENT 2019-1



# EXISTING TYPICAL CROSS SECTIONS

## HQ – EAST PARKING LOT

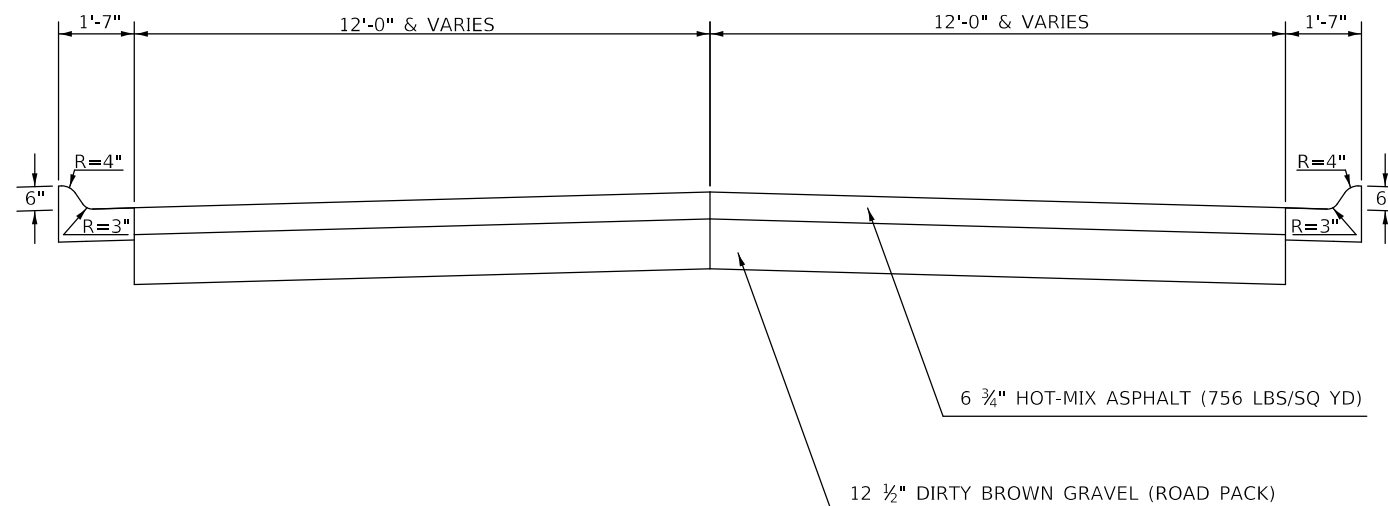
### STRUCTURES 1-7



# EXISTING TYPICAL CROSS SECTIONS

## HQ – NORTH PARKING LOT

### STRUCTURES 8-27



MODEL: \\MODEL\MAT\...  
 FILE: \\mat\...

USER NAME = HodgsonRA	DESIGNED -	REVISED -
	DRAWN -	REVISED -
PLOT SCALE = 40.0000' / in.	CHECKED -	REVISED -
PLOT DATE = 3/18/2019	DATE -	REVISED -

STATE OF ILLINOIS  
DEPARTMENT OF TRANSPORTATION

I.D.O.T. BLVD TYPICAL SECTIONS

SCALE: SHEET OF SHEETS STA. TO STA.

F.A.P. RTE.	SECTION	COUNTY	TOTAL SHEETS	SHEET NO.
	*	EDGAR	29	8
CONTRACT NO. 70D18				
ILLINOIS FED. AID PROJECT				

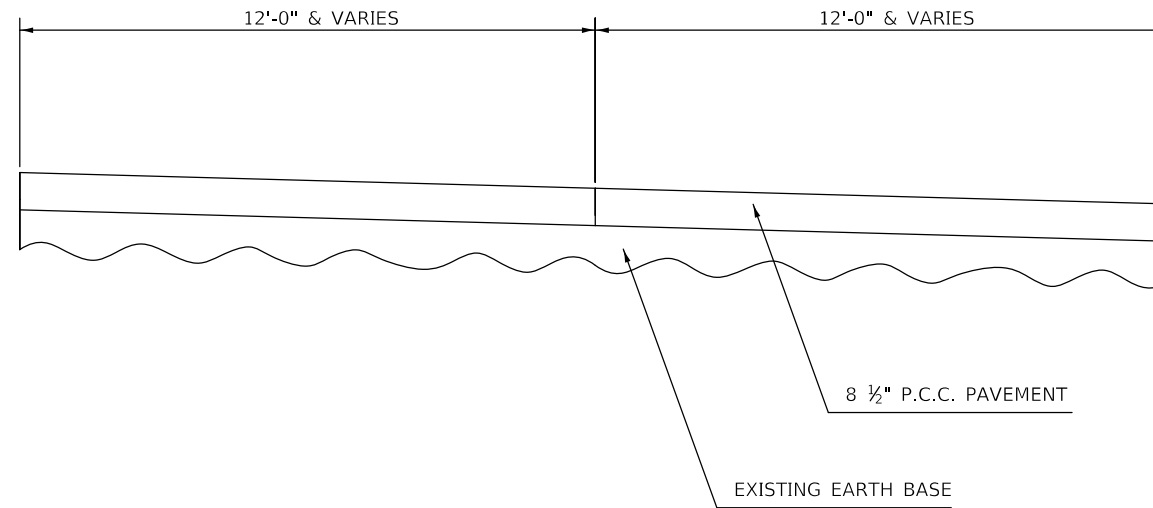
\* D5 LOT IMPROVEMENT 2019-1



# EXISTING TYPICAL CROSS SECTIONS

## SIGN SHOP – NORTH LOT

### STRUCTURES 28–31



MODEL: s:\MODEL\MRFs  
 FILE: MRFs\_Plan\Illumination\Illinois\DOT\Documents\DOT\_Offices\District 5\Projects\D570D18\CADD\DATA\CAD\Sheet\D570D18-shc-Typical.dgn

USER NAME = HodgsonRA	DESIGNED -	REVISED -
	DRAWN -	REVISED -
PLOT SCALE = 40.0000 ' / in.	CHECKED -	REVISED -
PLOT DATE = 3/18/2019	DATE -	REVISED -

**STATE OF ILLINOIS**  
**DEPARTMENT OF TRANSPORTATION**

**I.D.O.T. BLVD TYPICAL SECTIONS**

SCALE: SHEET OF SHEETS STA. TO STA.

F.A.P. RTE.	SECTION	COUNTY	TOTAL SHEETS	SHEET NO.
IDOT	*	EDGAR	29	9
			CONTRACT NO. 70D18	
		ILLINOIS	FED. AID PROJECT	

\* D5 LOT IMPROVEMENT 2019-1

# SCHEDULE OF QUANTITIES

## STORM SEWER REMOVAL SCHEDULE

STRUCTURE NO.	FROM STRUCTURE		TO STRUCTURE		SLOPE (%)	STORM SEWER REMOVAL 4" 55100100 (FOOT)	STORM SEWER REMOVAL 6" 55100200 (FOOT)	STORM SEWER REMOVAL 8" 55100300 (FOOT)	STORM SEWER REMOVAL 10" 55104100 (FOOT)	STORM SEWER REMOVAL 12" 55105100 (FOOT)	STORM SEWER REMOVAL 15" 55100700 (FOOT)	STORM SEWER REMOVAL 24" 55101200 (FOOT)	
	FLOWLINE OUT (FEET)		STRUCTURE NO.	FLOWLINE IN (FEET)									
1	734.56	NE	3	734.29	SW	0.74%	-	-	-	-	36.6	-	
2	734.69	N	3	734.48	S	1.29%	-	-	-	-	16.3	-	
3	734.25	N	6	732.01	S	2.65%	-	-	-	-	84.4	-	
4	735.01	SW	PUNCH IN @ 3-5			-	-	-	-	-	7.2	-	
TIE-IN w/ COLLAR	-		6	730.38	N	--	-	4.0	-	-	-	-	
TIE-IN w/ COLLAR	-		6	733.43	NE	--	4.0	-	-	-	-	-	
TIE-IN w/ COLLAR	-		6	730.19	S	--	-	4.0	-	-	-	-	
6	730.07	W	26	729.62	E	0.27%	-	-	168.8	-	-	-	
9	734.19	SE	11	733.08	NW	7.12%	-	-	-	15.6	-	-	
TIE-IN w/ COLLAR	-		11	730.35	NE	--	-	-	-	4.0	-	-	
10	734.72	SE	25	734.70	NW	0.59%	-	-	3.4	-	-	-	
25	734.10	SW	26	733.68	NE	1.79%	-	-	23.4	-	-	-	
11	729.06	SW	26	728.78	NE	0.83%	-	-	-	-	33.8	-	
13	734.03	NE	26	733.40	SW	2.09%	-	-	-	-	30.1	-	
26	729.49	W	17	729.60	E	-0.09%	-	-	-	117.4	-	-	
TIE-IN w/ COLLAR	-		12	733.75	SE	--	-	-	4.0	-	-	-	
TIE-IN w/ COLLAR	-		12	-		--	-	4.0	-	-	-	-	
TIE-IN w/ COLLAR	-		14	733.53	NE	--	-	4.0	-	-	-	-	
14	733.54	E	26	733.20	W	1.30%	-	-	26.2	-	-	-	
16	732.92	W	17	732.88	E	0.33%	-	-	-	-	12.1	-	
18	733.03	E	17	732.71	W	2.46%	-	-	-	-	13.0	-	
TIE-IN w/ COLLAR	-		17	729.63	NE	--	-	-	-	-	8.0	-	
TIE-IN w/ COLLAR	-		17	730.16	NW	--	-	-	-	-	8.0	-	
17	729.42	SW	19	729.42	NE	0.00%	-	-	-	-	73.2	-	
TIE-IN w/ COLLAR	-		19	729.42	SE	--	-	-	-	-	8.0	-	
TIE-IN w/ COLLAR	-		19	734.41	S	--	-	4.0	-	-	-	-	
TIE-IN w/ COLLAR	-		19	729.90	S	--	-	4.0	-	-	-	-	
19	729.37	SW	20	729.19	NE	0.28%	-	-	-	-	64.9	-	
24	733.95	S	23	733.84	N	0.29%	-	-	-	-	37.3	-	
23	733.42	SE	20	733.15	NW	0.46%	-	-	-	58.4	-	-	
20	729.05	S	21	728.95	N	0.22%	-	-	-	-	45.0	-	
22	734.04	SE	21	732.43	NW	4.68%	-	-	-	34.4	-	-	
TIE-IN w/ COLLAR	-		21	728.75	NE	--	-	-	-	-	8.0	-	
TIE-IN w/ COLLAR	-		21	-		--	-	-	-	-	-	8.0	
NE SIGN SHOP	-		30	-		--	-	10.6	-	-	-	-	
SIGN SHOP PLUG	-		28	731.57	S	--	-	-	-	65.3	-	-	
30	-		29	-		--	-	136.2	-	-	-	-	
TIE-IN w/ COLLAR	-		27	730.74	E	--	-	-	-	4.0	-	-	
TIE-IN w/ COLLAR	-		27	-		--	-	-	-	4.0	-	-	
TIE-IN w/ COLLAR	-		27	730.78	W	--	-	-	8.0	-	-	-	
TOTAL =							4.0	16.0	154.8	233.8	536.6	252.4	8.0
ROUND TO :							4.0	16.0	156.0	236.0	544.0	256.0	8.0

**STATE OF ILLINOIS  
DEPARTMENT OF TRANSPORTATION**

**SCHEDULE OF QUANTITIES**

SCALE: SHEET 2 OF 7 SHEETS STA. TO STA.

F.A.P. RTE.	SECTION	COUNTY	TOTAL SHEETS	SHEET NO.
	*	EDGAR	29	10
CONTRACT NO. 70D18				
ILLINOIS FED. AID PROJECT				

\* D5 LOT IMPROVEMENT 2019-1

# SCHEDULE OF QUANTITIES

## STORM SEWER SCHEDULE

FROM STRUCTURE		TO STRUCTURE		SLOPE (%)	STORM SEWERS, RUBBER GASKET, CLASS A, TYPE 1, 12" 550A2320 (FOOT)	STORM SEWERS, RUBBER GASKET, CLASS A, TYPE 1, 15" 550A2330 (FOOT)	STORM SEWERS, RUBBER GASKET, CLASS A, TYPE 2, 12" 550A2520 (FOOT)	STORM SEWERS, RUBBER GASKET, CLASS A, TYPE 2, 15" 550A2530 (FOOT)	STORM SEWERS, RUBBER GASKET, CLASS A, TYPE 2, 24" 550A2560 (FOOT)	STORM SEWERS, RUBBER GASKET, CLASS A, TYPE 3, 15" 550A2730 (FOOT)	STORM SEWERS, RUBBER GASKET, CLASS A, TYPE 3, 24" 550A2760 (FOOT)	STORM SEWERS, RUBBER GASKET, CLASS B, TYPE 1, 10" 550B2310 (FOOT)	STORM SEWERS (SPECIAL), 4" 61139800 (FOOT)	STORM SEWERS (SPECIAL), 6" 61139900 (FOOT)	STORM SEWERS (SPECIAL), 8" 61140000 (FOOT)	STORM SEWERS (SPECIAL), 10" 61140100 (FOOT)	CONCRETE COLLAR 54248510 (CU YD)		
STRUCTURE NO.	FLOWLINE OUT (FEET)	STRUCTURE NO.	FLOWLINE IN (FEET)																
1	734.57 NE	3	734.40 SW	0.49%	35.0	--	--	--	--	--	--	--	--	--	--	--	--	--	
2	734.69 N	3	734.60 S	0.54%	16.8	--	--	--	--	--	--	--	--	--	--	--	--	--	
3	734.25 N	5	734.00 S	0.48%	--	51.6	--	--	--	--	--	--	--	--	--	--	--	--	
4	735.01 NW	5	734.95 SE	0.44%	13.6	--	--	--	--	--	--	--	--	--	--	--	--	--	
7	734.66 NE	5	734.46 SW	0.47%	42.6	--	--	--	--	--	--	--	--	--	--	--	--	--	
5	733.75 N	6	733.55 S	0.71%	--	--	--	28.0	--	--	--	--	--	--	--	--	--	--	
TIE-IN w/ COLLAR	--	6	730.38 N	--	--	--	--	--	--	--	--	--	--	--	4.0	--	--	0.19	
TIE-IN w/ COLLAR	--	6	733.43 NE	--	--	--	--	--	--	--	--	--	4.0	--	--	--	--	0.14	
TIE-IN w/ COLLAR	--	6	730.19 S	--	--	--	--	--	--	--	--	--	--	--	4.0	--	--	0.19	
6	730.18 W	8	729.96 E	0.16%	--	--	--	--	134.4	--	--	--	--	--	--	--	--	--	
9	734.20 SE	11	734.10 NW	0.67%	15.0	--	--	--	--	--	--	--	--	--	--	--	--	--	
11	730.25 S	8	729.97 N	0.32%	--	--	--	88.2	--	--	--	--	--	--	--	--	--	--	
TIE-IN w/ COLLAR	--	11	730.35 NE	--	--	--	4.0	--	--	--	--	--	--	--	--	--	--	0.25	
10	734.72 SE	8	734.70 NW	0.14%	14.5	--	--	--	--	--	--	--	--	--	--	--	--	--	
TIE-IN w/ COLLAR	--	12	733.75 SE	--	--	--	--	--	--	--	--	--	--	--	--	4.0	--	0.22	
TIE-IN w/ COLLAR	733.67 SW	12	--	--	--	--	--	--	--	--	--	--	4.0	--	--	--	--	0.16	
8	729.86 W	15	729.73 E	0.18%	--	--	--	--	73.0	--	--	--	--	--	--	--	--	--	
14	733.40 W	15	733.35 E	0.45%	11.2	--	--	--	--	--	--	--	--	--	--	--	--	--	
TIE-IN w/ COLLAR	--	14	733.53 NE	--	--	--	--	--	--	--	--	--	4.0	--	--	--	--	0.16	
13	734.03 NW	15	733.82 SE	0.47%	44.5	--	--	--	--	--	--	--	--	--	--	--	--	--	
15	729.63 W	17	729.50 E	0.17%	--	--	--	--	74.6	--	--	--	--	--	--	--	--	--	
16	733.00 W	17	732.95 E	0.47%	10.6	--	--	--	--	--	--	--	--	--	--	--	--	--	
18	733.03 E	17	732.95 W	0.70%	11.4	--	--	--	--	--	--	--	--	--	--	--	--	--	
TIE-IN w/ COLLAR	--	17	729.63 NE	--	--	--	--	8.0	--	--	--	--	--	--	--	--	--	0.30	
TIE-IN w/ COLLAR	--	17	730.16 NW	--	--	--	--	8.0	--	--	--	--	--	--	--	--	--	0.30	
17	729.40 SW	19	729.25 NE	0.21%	--	--	--	--	72.1	--	--	--	--	--	--	--	--	--	
TIE-IN w/ COLLAR	--	19	729.42 SE	--	--	--	--	8.0	--	--	--	--	--	--	--	--	--	0.30	
TIE-IN w/ COLLAR	--	19	734.41 S	--	--	--	--	--	--	--	--	--	4.0	--	--	--	--	0.16	
TIE-IN w/ COLLAR	--	19	729.90 S	--	--	--	--	--	--	--	--	--	4.0	--	--	--	--	0.16	
19	729.15 SW	20	729.00 NE	0.23%	--	--	--	--	65.7	--	--	--	--	--	--	--	--	--	
24	733.75 S	23	733.50 N	0.69%	--	36.2	--	--	--	--	--	--	--	--	--	--	--	--	
23	733.40 SE	20	733.20 NW	0.35%	--	57.4	--	--	--	--	--	--	--	--	--	--	--	--	
20	728.85 S	21	728.75 N	0.23%	--	--	--	--	44.2	--	--	--	--	--	--	--	--	--	
22	734.04 SE	21	733.85 NW	0.56%	33.8	--	--	--	--	--	--	--	--	--	--	--	--	--	
TIE-IN w/ COLLAR	--	21	728.75 NE	--	--	--	--	--	8.0	--	--	--	--	--	--	--	--	0.30	
TIE-IN w/ COLLAR	728.65 SW	21	--	--	--	--	--	--	--	8.0	--	--	--	--	--	--	--	0.45	
NE SIGN SHOP	734.65 N	30	734.60 S	--	--	--	--	--	--	--	--	9.7	--	--	--	--	--	--	
30	734.60 W	29	733.55 E	0.56%	--	--	--	--	--	--	--	187.0	--	--	--	--	--	--	
28	731.56 SW	31	731.34 E	0.47%	--	--	46.5	--	--	--	--	--	--	--	--	--	--	--	
31	731.24 S	29	730.93 N	0.47%	--	--	66.0	--	--	--	--	--	--	--	--	--	--	--	
29	730.83 SW	27	730.59 NE	0.48%	--	--	50.0	--	--	--	--	--	--	--	--	--	--	--	
TIE-IN w/ COLLAR	--	27	730.74 E	--	--	--	4.0	--	--	--	--	--	--	--	--	--	--	0.25	
TIE-IN w/ COLLAR	730.49 S	27	--	--	--	--	4.0	--	--	--	--	--	--	--	--	--	--	0.25	
TIE-IN w/ COLLAR	--	27	730.78 W	--	--	--	--	--	--	--	--	--	--	--	--	8.0	--	0.22	
TOTAL =					249.0	145.2	174.5	140.2	464.0	8.0	8.0	196.7	4.0	16.0	8.0	12.0	4.0		
ROUND TO :					256.0	152.0	176.0	144.0	464.0	8.0	8.0	200.0	4.0	16.0	8.0	12.0	4.0		

MODEL: I:\MODEL\MAFIS FILE: MAIFIS\_Plan\I18m\hcom\da\illinois.gov\PWDOT\Documents\DOT\_Offices\Illinfct 5\Projects\0570D18\CAD\DATA\CAD\Inspecs\0570D18-Inf-Schedule.dgn

USER NAME = HodgsonRA	DESIGNED -	REVISED -
	DRAWN -	REVISED -
PLOT SCALE = 40,0000' / in.	CHECKED -	REVISED -
PLOT DATE = 3/18/2019	DATE -	REVISED -

**STATE OF ILLINOIS  
DEPARTMENT OF TRANSPORTATION**

**SCHEDULE OF QUANTITIES**

SCALE: SHEET 3 OF 7 SHEETS STA. TO STA.

F.A.P. RTE.	SECTION	COUNTY	TOTAL SHEETS	SHEET NO.
IDOT	*	EDGAR	29	11
CONTRACT NO.			70D18	
ILLINOIS FED. AID PROJECT				

\* D5 LOT IMPROVEMENT 2019-1







# SCHEDULE OF QUANTITIES

## TOPSOIL, SEEDING, AND FERTILIZER

FROM STRUCTURE NO.	TO STRUCTURE NO.	TRENCH WIDTH (INCHES)	STRUCTURE EXCAVATION AREA (SQ FT)	TOPSOIL FURNISH LENGTH (FEET)	TOPSOIL FURNISH AND PLACE, 4" 21101615 (SQ YD)	SEEDING, CLASS 1A 25000110 (ACRE)	SEEDING, CLASS 7 25000350 (ACRE)	NITROGEN FERTILIZER NUTRIENT 25000400 (POUND)	PHOSPHORUS FERTILIZER NUTRIENT 25000500 (POUND)	POTASSIUM FERTILIZER NUTRIENT 25000600 (POUND)	MULCH, METHOD 2 25100115 (ACRE)	TEMPORARY EROSION CONTROL SEEDING 28000250 (POUND)
3	5	55.50	-	3.7	1.9	0.0004	0.0004	0.04	0.04	0.04	0.0004	0.12
4	5	34.00	-	13.6	4.3	0.0009	0.0009	0.08	0.08	0.08	0.0009	0.27
5	6	55.50	-	12.2	6.3	0.0013	0.0013	0.12	0.12	0.12	0.0013	0.39
6	8	66.00	-	102.8	62.8	0.0130	0.0130	1.17	1.17	1.17	0.0130	3.89
9	11	34.00	-	15.0	4.7	0.0010	0.0010	0.09	0.09	0.09	0.0010	0.29
11	8	55.50	-	88.2	45.3	0.0094	0.0094	0.84	0.84	0.84	0.0094	2.81
TIE-IN w/ COLLAR	11	52.00	-	4.0	1.9	0.0004	0.0004	0.04	0.04	0.04	0.0004	0.12
11	26	52.00	-	2.0	1.0	0.0002	0.0002	0.02	0.02	0.02	0.0002	0.06
10	8	34.00	-	14.5	4.6	0.0009	0.0009	0.08	0.08	0.08	0.0009	0.28
TIE-IN w/ COLLAR	12	31.67	-	4.0	1.2	0.0002	0.0002	0.02	0.02	0.02	0.0002	0.07
TIE-IN w/ COLLAR	12	27.00	-	4.0	1.0	0.0002	0.0002	0.02	0.02	0.02	0.0002	0.06
8	15	66.00	-	4.4	2.7	0.0006	0.0006	0.05	0.05	0.05	0.0006	0.17
14	15	34.00	-	11.2	3.5	0.0007	0.0007	0.07	0.07	0.07	0.0007	0.22
TIE-IN w/ COLLAR	14	27.00	-	4.0	1.0	0.0002	0.0002	0.02	0.02	0.02	0.0002	0.06
15	17	66.00	-	74.6	45.6	0.0094	0.0094	0.85	0.85	0.85	0.0094	2.83
18	17	34.00	-	11.4	3.6	0.0007	0.0007	0.07	0.07	0.07	0.0007	0.22
TIE-IN w/ COLLAR	17	55.50	-	8.0	4.1	0.0008	0.0008	0.08	0.08	0.08	0.0008	0.25
TIE-IN w/ COLLAR	17	55.50	-	8.0	4.1	0.0008	0.0008	0.08	0.08	0.08	0.0008	0.25
19	20	66.00	-	42.8	26.2	0.0054	0.0054	0.49	0.49	0.49	0.0054	1.62
23	20	55.50	-	57.4	29.5	0.0061	0.0061	0.55	0.55	0.55	0.0061	1.83
20	21	66.00	-	44.2	27.0	0.0056	0.0056	0.50	0.50	0.50	0.0056	1.67
22	21	52.00	-	33.8	16.3	0.0034	0.0034	0.30	0.30	0.30	0.0034	1.01
TIE-IN w/ COLLAR	21	55.50	-	8.0	4.1	0.0008	0.0008	0.08	0.08	0.08	0.0008	0.25
TIE-IN w/ COLLAR	21	66.00	-	8.0	4.9	0.0010	0.0010	0.09	0.09	0.09	0.0010	0.30
1	-	-	20.63	-	2.3	0.0005	0.0005	0.04	0.04	0.04	0.0005	0.14
4	-	-	20.63	-	2.3	0.0005	0.0005	0.04	0.04	0.04	0.0005	0.14
5	-	-	28.35	-	3.1	0.0007	0.0007	0.06	0.06	0.06	0.0007	0.20
7	-	-	20.63	-	2.3	0.0005	0.0005	0.04	0.04	0.04	0.0005	0.14
8	-	-	35.73	-	4.0	0.0008	0.0008	0.07	0.07	0.07	0.0008	0.25
9	-	-	20.63	-	2.3	0.0005	0.0005	0.04	0.04	0.04	0.0005	0.14
11	-	-	28.35	-	3.1	0.0007	0.0007	0.06	0.06	0.06	0.0007	0.20
12	-	-	20.63	-	2.3	0.0005	0.0005	0.04	0.04	0.04	0.0005	0.14
13	-	-	20.63	-	2.3	0.0005	0.0005	0.04	0.04	0.04	0.0005	0.14
14	-	-	20.63	-	2.3	0.0005	0.0005	0.04	0.04	0.04	0.0005	0.14
15	-	-	35.73	-	4.0	0.0008	0.0008	0.07	0.07	0.07	0.0008	0.25
16	-	-	20.63	-	2.3	0.0005	0.0005	0.04	0.04	0.04	0.0005	0.14
17	-	-	43.69	-	4.9	0.0010	0.0010	0.09	0.09	0.09	0.0010	0.30
18	-	-	20.63	-	2.3	0.0005	0.0005	0.04	0.04	0.04	0.0005	0.14
20	-	-	28.35	-	3.1	0.0007	0.0007	0.06	0.06	0.06	0.0007	0.20
21	-	-	35.73	-	4.0	0.0008	0.0008	0.07	0.07	0.07	0.0008	0.25
22	-	-	20.63	-	2.3	0.0005	0.0005	0.04	0.04	0.04	0.0005	0.14
23	-	-	20.63	-	2.3	0.0005	0.0005	0.04	0.04	0.04	0.0005	0.14
24	-	-	20.63	-	2.3	0.0005	0.0005	0.04	0.04	0.04	0.0005	0.14
25	-	-	20.63	-	2.3	0.0005	0.0005	0.04	0.04	0.04	0.0005	0.14
TOTAL =					363.6	0.08	0.08	6.8	6.8	6.8	0.08	22.5
ROUND TO :					365.0	0.25	0.25	22.5	22.5	22.5	0.25	25.0

MODEL: \\MODEL\MAT\...  
 FILE: \\MODEL\MAT\...

USER NAME = HodgsonRA	DESIGNED -	REVISED -
DRAWN -	REVISIONS -	REVISIONS -
PLOT SCALE = 40.0000' / in.	CHECKED -	REVISIONS -
PLOT DATE = 3/18/2019	DATE -	REVISIONS -

**STATE OF ILLINOIS  
DEPARTMENT OF TRANSPORTATION**

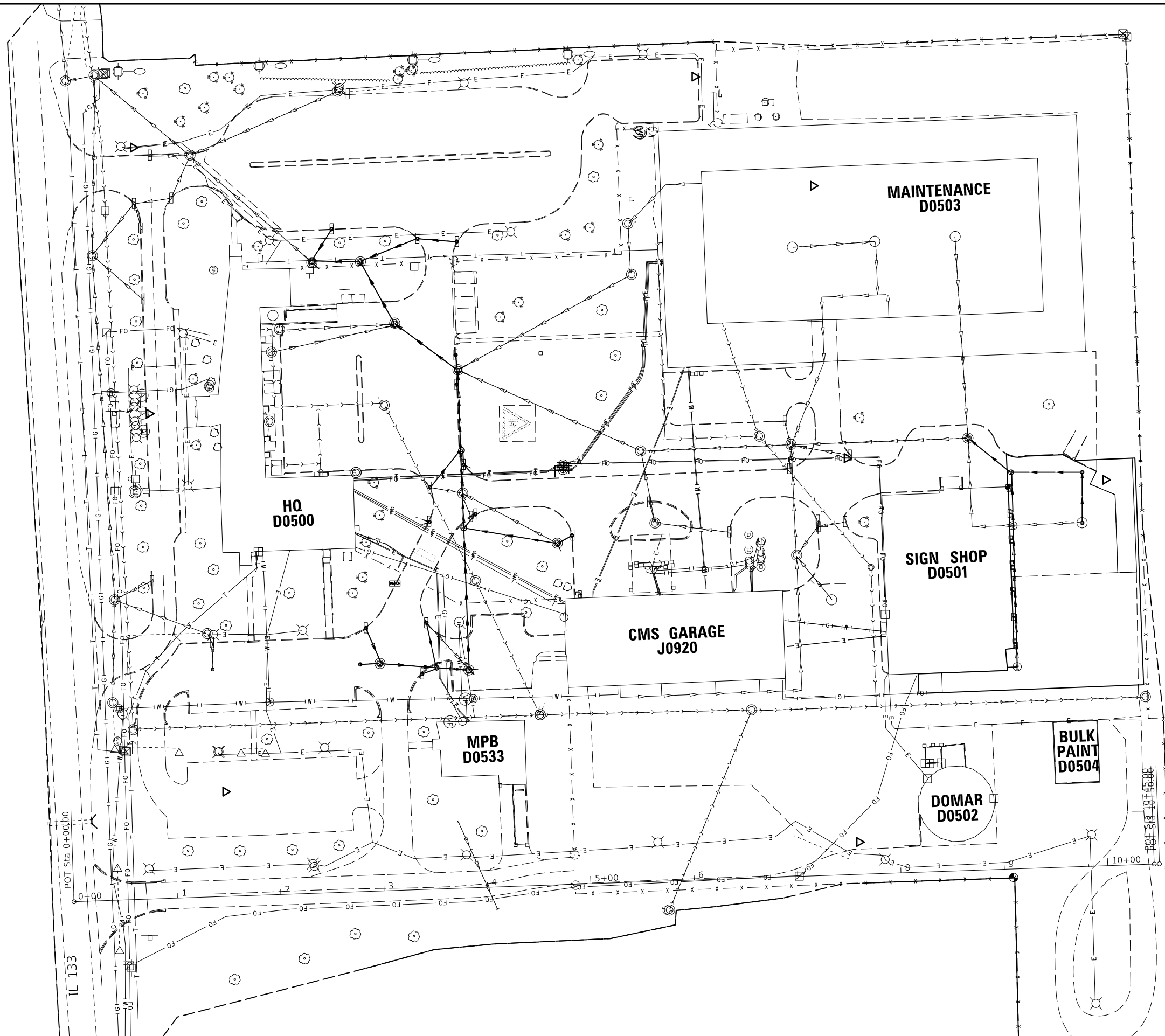
<b>SCHEDULE OF QUANTITIES</b>			
SCALE:	SHEET 6 OF 7 SHEETS	STA.	TO STA.

F.A.P. RTE.	SECTION	COUNTY	TOTAL SHEETS	SHEET NO.
	*	EDGAR	29	15
CONTRACT NO. 70D18				
ILLINOIS FED. AID PROJECT				

\* D5 LOT IMPROVEMENT 2019-1







MODEL: \\MODEL\MATF  
 FILE: \\matf:pub\blm\com\da\illinois\pwr\DOT\Documents\DOT\_Offices\blm\DOT\_05\018\CADD\DATA\CAD\sheet\05\_70D18-1-1-plan.dgn

USER NAME = HodgsonRA	DESIGNED -	REVISED -
PLOT SCALE = 100,0000' / in.	DRAWN -	REVISED -
PLOT DATE = 3/18/2019	CHECKED -	REVISED -
	DATE -	REVISED -

**STATE OF ILLINOIS**  
**DEPARTMENT OF TRANSPORTATION**

**PLAN SHEET**

SCALE: SHEET 1 OF 1 SHEETS STA. TO STA.

F.A.P. RTE.	SECTION	COUNTY	TOTAL SHEETS	SHEET NO.
IDOT	*	EDGAR	29	17
CONTRACT NO. 70D18			ILLINOIS FED. AID PROJECT	

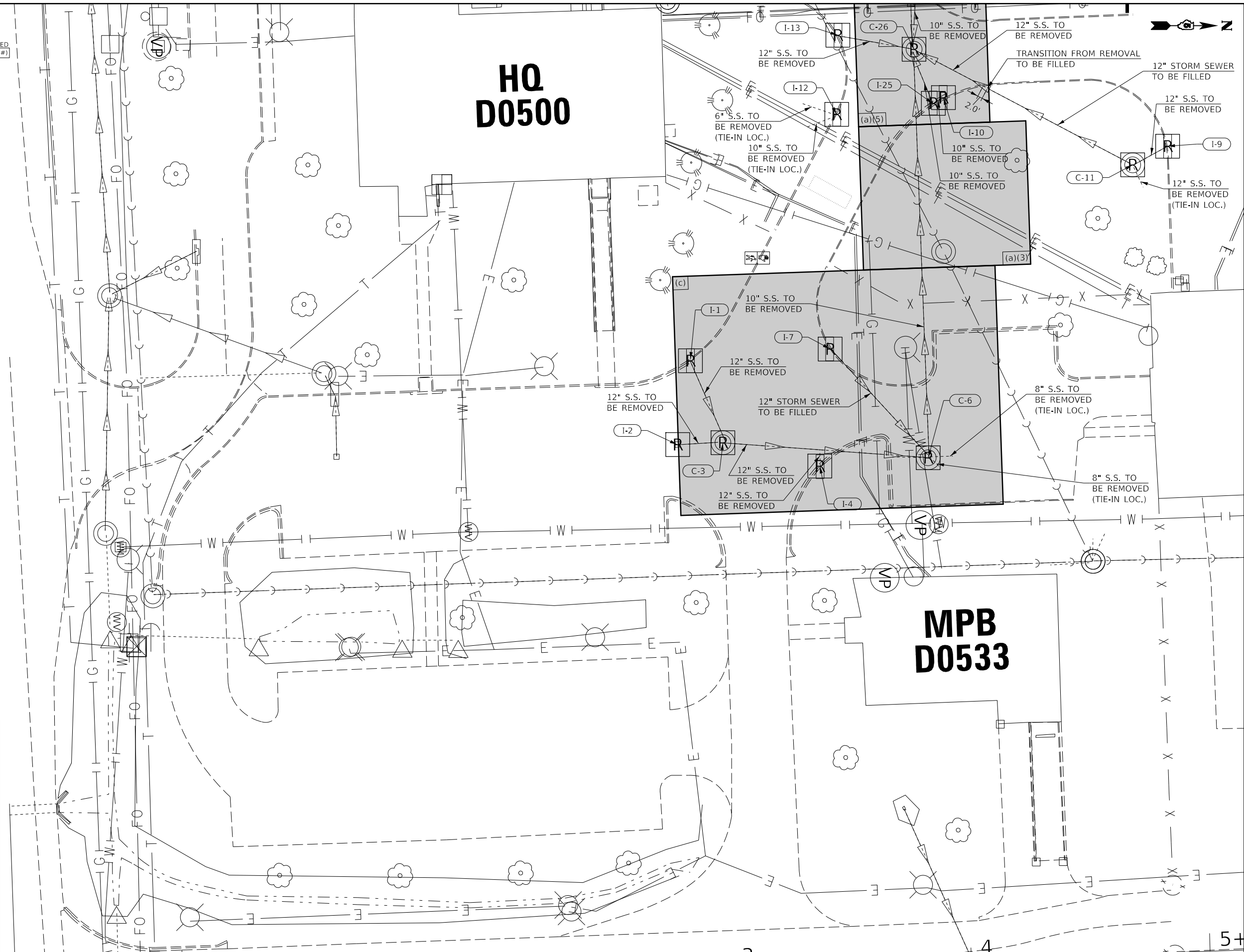
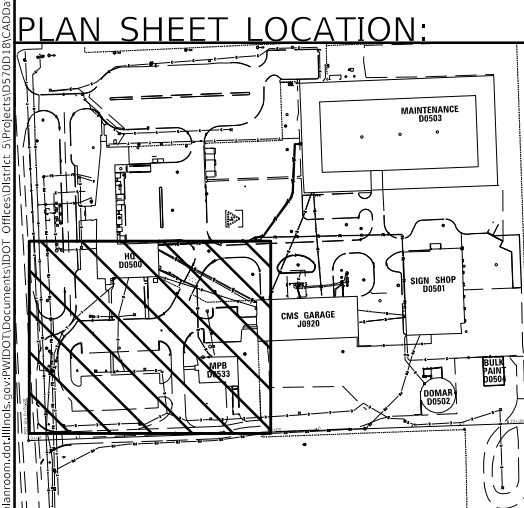
\* D5 LOT IMPROVEMENT 2019-1

- I-1**  
INLET  
STA: 2+91.11  
OFF: 254.64' LT.
- I-2**  
INLET  
STA: 2+84.75  
OFF: 219.76' LT.
- C-3**  
CATCH BASIN  
STA: 3+03.67  
OFF: 219.83' LT.
- I-4**  
INLET  
STA: 3+43.96  
OFF: 208.30' LT.
- C-6**  
CATCH BASIN  
STA: 3+89.30  
OFF: 210.52' LT.
- I-7**  
INLET  
STA: 3+49.11  
OFF: 257.74' LT.
- C-26**  
CATCH BASIN  
STA: 3+89.34  
OFF: 381.59' LT.
- I-9**  
INLET  
STA: 4+93.60  
OFF: 337.17' LT.
- I-10**  
INLET  
STA: 4+00.82  
OFF: 360.91' LT.
- C-11**  
CATCH BASIN  
STA: 4+79.10  
OFF: 330.07' LT.
- I-25**  
INLET  
STA: 3+96.56  
OFF: 358.71' LT.
- I-12**  
INLET  
STA: 3+55.05  
OFF: 355.05' LT.
- I-13**  
INLET  
STA: 3+57.76  
OFF: 388.51' LT.

**REGULATED SUBSTANCES**  
NOTE: SOIL CLASSIFICATION LABELED IN CORNER OF BOX AS 669.05 (a)(#)  
a=LETTER  
#=NUMBER

**HQ  
D0500**

**MPB  
D0533**



**STATE OF ILLINOIS  
DEPARTMENT OF TRANSPORTATION**

**REMOVAL PLANS - D5 HQ**

USER NAME = HodgsonRA	DESIGNED -	REVISED -
PLOT SCALE = 40,0000' / in.	DRAWN -	REVISED -
PLOT DATE = 3/18/2019	CHECKED -	REVISED -
	DATE -	REVISED -

SCALE:	SHEET	OF	SHEETS	STA.	TO	STA.
--------	-------	----	--------	------	----	------

F.A.P. RTE.	SECTION	COUNTY	TOTAL SHEETS	SHEET NO.
IDOT	*	EDGAR	29	18
CONTRACT NO. 70D18				
ILLINOIS FED. AID PROJECT				

\* D5 LOT IMPROVEMENT 2019-1

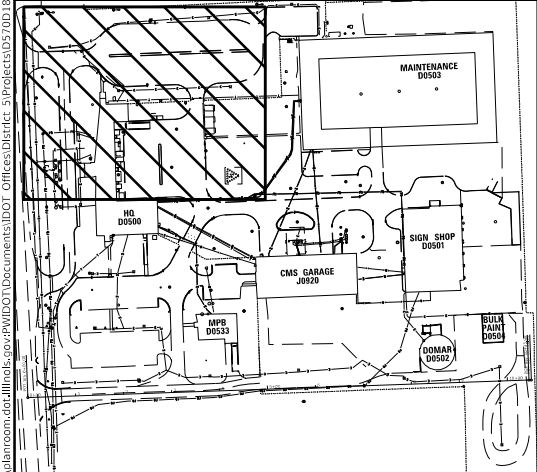
MODEL: s:\MODEL\MHFE... FILE: MHFE... PROJECT: 70D18... 3/18/2019

- I-14  
INLET  
STA: 3+91.16  
OFF: 409.29' LT.
- I-16  
INLET  
STA: 3+87.09  
OFF: 486.87' LT.
- C-17  
CATCH BASIN  
STA: 3+88.99  
OFF: 501.03' LT.
- I-18  
INLET  
STA: 3+87.08  
OFF: 515.40' LT.
- C-19  
CATCH BASIN  
STA: 3+29.21  
OFF: 547.40' LT.
- C-20  
CATCH BASIN  
STA: 2+98.37  
OFF: 608.58' LT.
- C-21  
CATCH BASIN  
STA: 2+51.35  
OFF: 609.45' LT.
- I-22  
INLET  
STA: 2+71.60  
OFF: 641.39' LT.
- I-23  
INLET  
STA: 3+54.07  
OFF: 629.47' LT.
- I-24  
INLET  
STA: 3+92.24  
OFF: 625.04' LT.

REGULATED SUBSTANCES

NOTE: SOIL CLASSIFICATION LABELED IN CORNER OF BOX AS 669.05(a)(#)  
a=LETTER  
#=NUMBER

PLAN SHEET LOCATION:



NO PROPOSED WORK PAST NORTHERN LIMITS OF THIS SHEET

MODEL: s:\MODEL\NAME: FILE: NAME: PROJECT: C:\Users\ra\Documents\DOT Office\Drawings\Projects\2018\CAD\Drawings\2018\2018-Removal\Section.dgn

USER NAME = HodgsonRA	DESIGNED -	REVISED -
DRAWN -	REVISOR -	
PLOT SCALE = 40.0000' / in.	CHECKED -	REVISOR -
PLOT DATE = 3/18/2019	DATE -	REVISOR -

STATE OF ILLINOIS  
DEPARTMENT OF TRANSPORTATION

REMOVAL PLANS - D5 HQ

SCALE:	SHEET	OF	SHEETS	STA.	TO	STA.
--------	-------	----	--------	------	----	------

F.A.P. RTE.	SECTION	COUNTY	TOTAL SHEETS	SHEET NO.
IDOT	*	EDGAR	29	19
CONTRACT NO. 70D18			ILLINOIS FED. AID PROJECT	

\* D5 LOT IMPROVEMENT 2019-1



C-27  
CATCH BASIN  
STA: 8+79.40  
OFF: 417.81' LT.

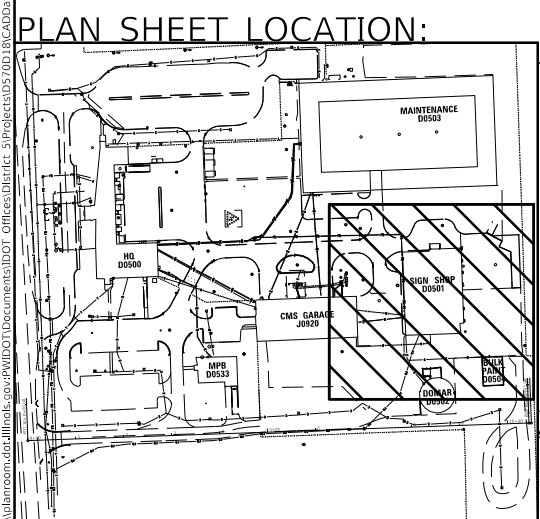
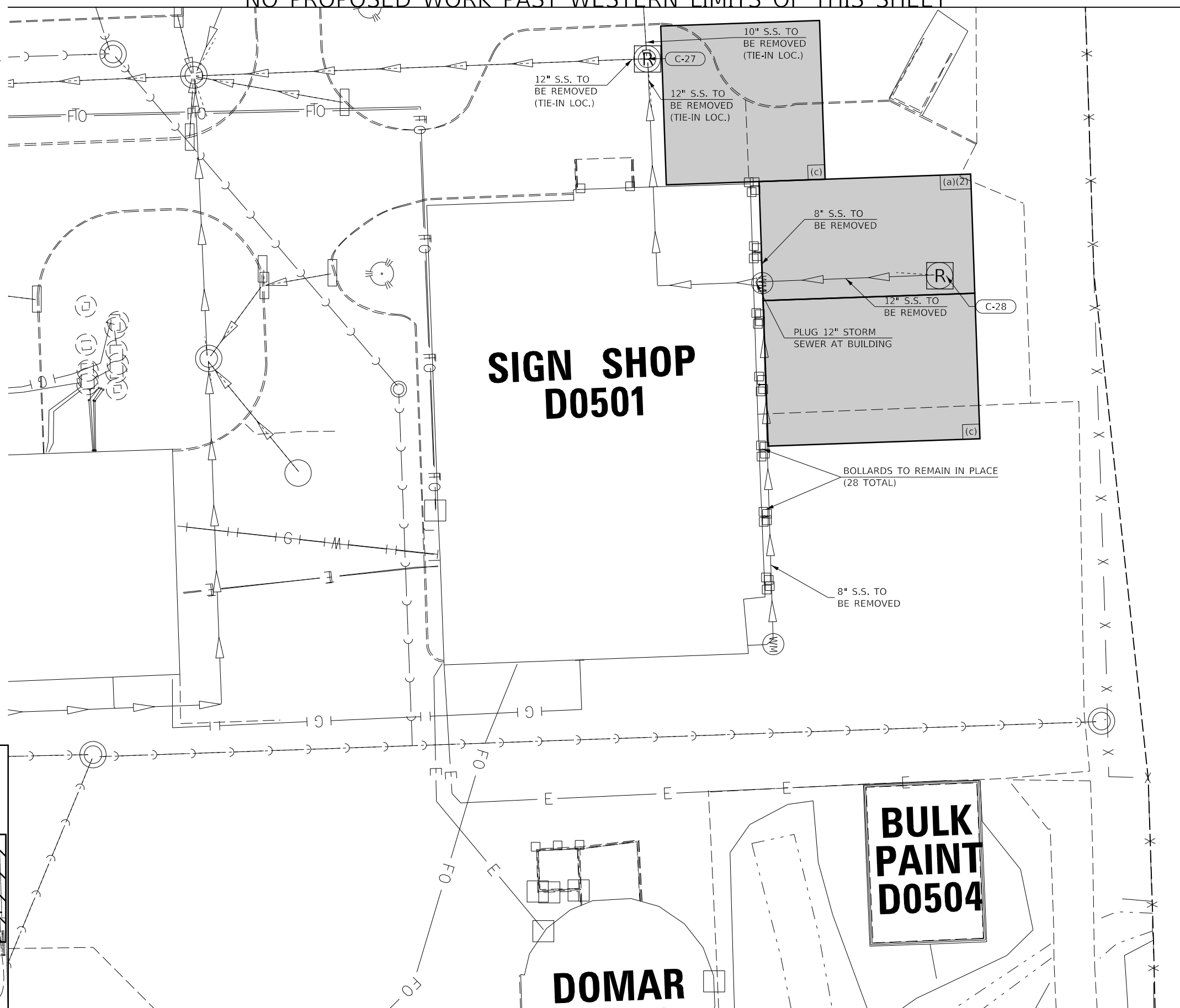
I-28  
INLET  
STA: 9+86.86  
OFF: 332.14' LT.

REGULATED  
SUBSTANCES

NOTE: SOIL CLASSIFICATION LABELED  
IN CORNER OF BOX AS 669.05(a)(#)  
a=LETTER  
#=NUMBER

PAVEMENT REMOVAL

NO PROPOSED WORK PAST WESTERN LIMITS OF THIS SHEET



**SIGN SHOP  
D0501**

**BULK  
PAINT  
D0504**

**DOMAR**

MODEL: s:\MODEL\MHFE  
FILE: mhfe.psd  
PROJECT: s:\PROJECTS\DOT\Documents\DOT\_Offices\Director\_S\Projects\DOT\1818\CAD\Drawings\DOT1818-SH-Removal\Section.dgn

USER NAME = HodgsonRA	DESIGNED -	REVISED -
PLOT SCALE = 40.0000' / in.	DRAWN -	REVISED -
PLOT DATE = 3/18/2019	CHECKED -	REVISED -
	DATE -	REVISED -

STATE OF ILLINOIS  
DEPARTMENT OF TRANSPORTATION

REMOVAL PLANS - D5 HQ

SCALE: SHEET OF SHEETS STA. TO STA.

F.A.P. RTE.	SECTION	COUNTY	TOTAL SHEETS	SHEET NO.
IDOT	*	EDGAR	29	20
CONTRACT NO. 70D18				
ILLINOIS FED. AID PROJECT				

\* D5 LOT IMPROVEMENT 2019-1

**I-1**  
 INLET TB T3 F&G  
 STA: 2+91.11  
 OFF: 254.64' LT.  
 T.O.M. = 736.79  
 T.O.G. = 737.62  
 RL OUT = 734.57 (12") NE

**I-2**  
 INLET TB T4 F&G  
 STA: 2+84.60  
 OFF: 219.68' LT.  
 T.O.M. = 736.90  
 T.O.G. = 737.80  
 RL OUT = 734.25 (12") N

**M-3**  
 MANHOLE TA 4'0" T1 F C.L.  
 STA: 3+03.67  
 OFF: 219.83' LT.  
 T.O.M. = 737.34  
 T.O.G. = 738.09  
 RL IN = 734.60 (12") S  
 RL IN = 734.40 (12") SW  
 RL OUT = 734.25 (15") N

**I-4**  
 INLET TB T3 F&G  
 STA: 3+43.96  
 OFF: 208.30 LT.  
 T.O.M. = 737.35  
 T.O.G. = 738.18  
 RL OUT = 735.01 (12") NW

**M-5**  
 MANHOLE TA 4'0" T1 F C.L.  
 STA: 3+58.23  
 OFF: 213.91' LT.  
 T.O.M. = 737.93  
 T.O.G. = 738.68  
 RL IN = 734.95 (12") SE  
 RL IN = 734.00 (12") S  
 RL IN = 734.46 (15") SW  
 RL OUT = 733.75 (15") N

**M-6**  
 MANHOLE TA 5'0" T1 F C.L.  
 STA: 3+89.30  
 OFF: 210.52' LT.  
 T.O.M. = 737.50  
 T.O.G. = 738.25  
 RL IN = 730.38 (8") N  
 RL IN = 733.43 (4") NE  
 RL IN = 730.19 (8") SW  
 RL IN = 733.55 (15") S  
 RL OUT = 730.18 (24") W

**I-7**  
 INLET TB T3 F&G  
 STA: 3+49.81  
 OFF: 257.74 LT.  
 T.O.M. = 736.90  
 T.O.G. = 737.73  
 RL OUT = 734.66 (12") NE

**REGULATED SUBSTANCES**  
 NOTE: SOIL CLASSIFICATION LABELED IN CORNER OF BOX AS 669.05 (a)(#)  
 a=LETTER  
 #=NUMBER

**M-8**  
 MANHOLE TA 5'0" T3 F C.L.  
 STA: 3+89.21  
 OFF: 348.11' LT.  
 T.O.M. = 737.00  
 T.O.G. = 737.75  
 RL IN = 729.97 (15") NE  
 RL IN = 729.96 (24") E  
 RL IN = 734.70 (12") NW  
 RL OUT = 729.86 (24") W

**I-9**  
 INLET TB T3 F&G  
 STA: 4+93.60  
 OFF: 337.17' LT.  
 T.O.M. = 737.04  
 T.O.G. = 737.87  
 RL OUT = 734.20 (12") SE

**I-10**  
 INLET TB T3 F&G  
 STA: 4+00.82  
 OFF: 360.91' LT.  
 T.O.M. = 736.39  
 T.O.G. = 737.22  
 RL OUT = 734.72 (12") SE

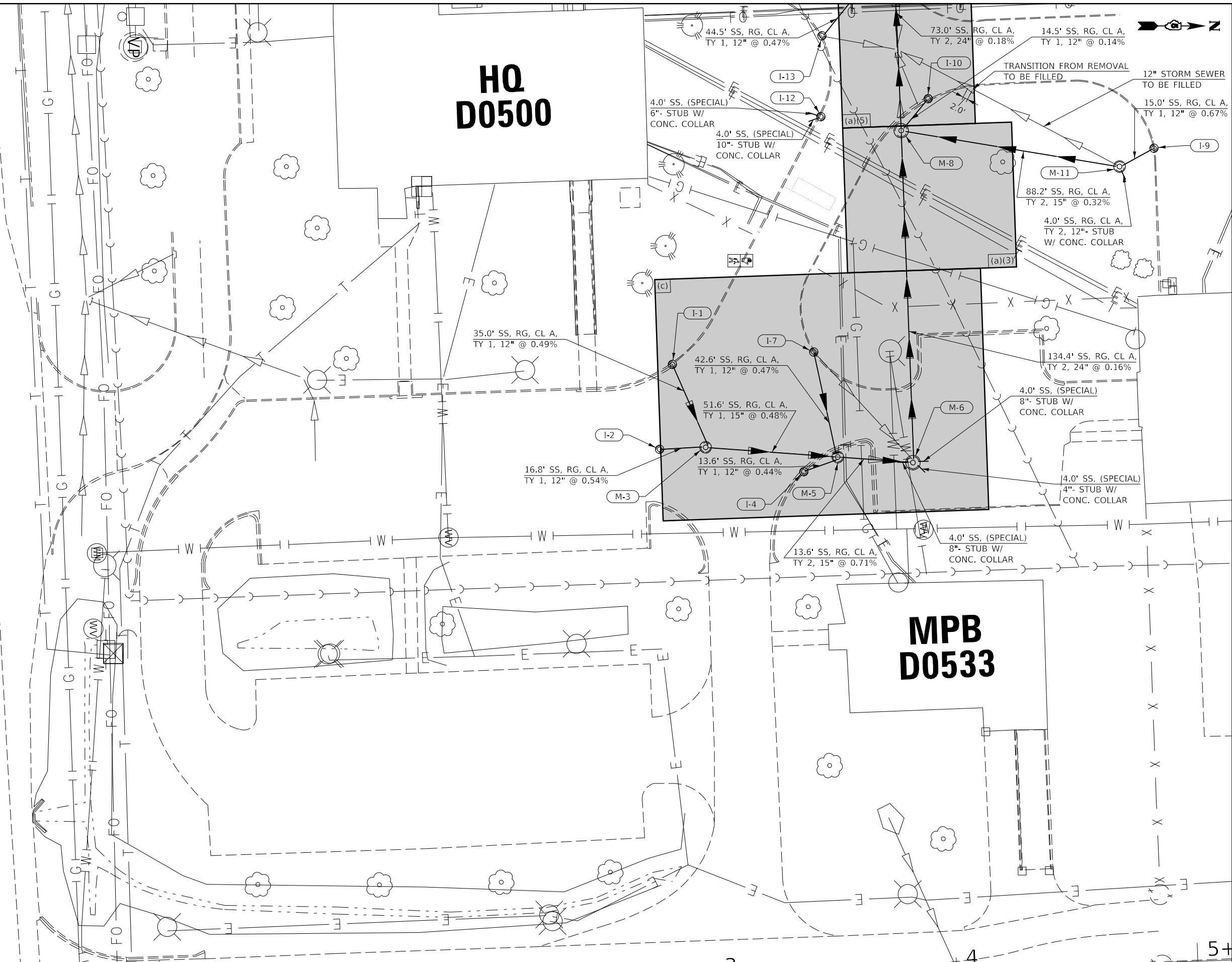
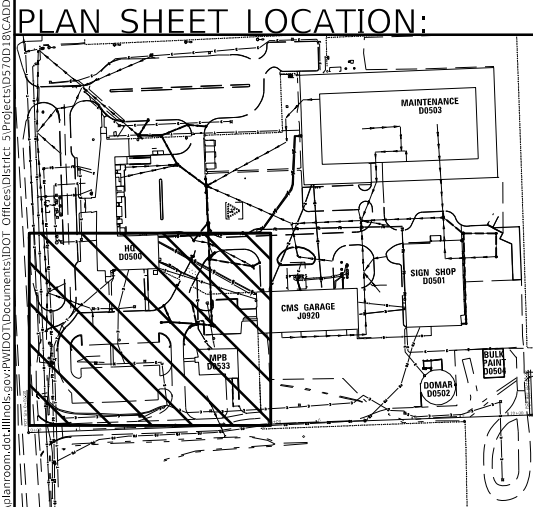
**M-11**  
 MANHOLE TA 4'0" T3 F C.L.  
 STA: 4+79.10  
 OFF: 330.07' LT.  
 T.O.M. = 737.30  
 T.O.G. = 738.05  
 RL IN = 730.35 (12") NE  
 RL IN = 734.10 (12") NW  
 RL OUT = 730.25 (15") S

**I-12**  
 INLET TB T3 F&G  
 STA: 3+56.15  
 OFF: 355.05' LT.  
 T.O.M. = 736.42  
 T.O.G. = 737.25  
 RL IN = 733.75 (10") SE  
 RL OUT = 733.67 (6") SW

**I-13**  
 INLET TB T3 F&G  
 STA: 3+57.76  
 OFF: 388.51' LT.  
 T.O.M. = 736.86  
 T.O.G. = 737.69  
 RL OUT = 734.03 (12") NW

**HQ D0500**

**MPB D0533**



MODEL: s:\MODEL\MHFE  
 FILE: MHFE.dwg  
 PROJECT: s:\PROJECTS\DOT\Documents\DOT\Office\Director\Projects\DOT\DOT18\DOT18-Proposed-Sections.dwg

USER NAME = HodgsonRA	DESIGNED -	REVISED -
PLOT SCALE = 40.0000' / in.	DRAWN -	REVISED -
PLOT DATE = 3/18/2019	CHECKED -	REVISED -
	DATE -	REVISED -

**STATE OF ILLINOIS**  
**DEPARTMENT OF TRANSPORTATION**

<b>PROPOSED PLANS - D5 HQ</b>				
SCALE:	SHEET	OF	SHEETS	STA. TO STA.

F.A.P. RTE.	SECTION	COUNTY	TOTAL SHEETS	SHEET NO.
IDOT	*	EDGAR	29	21
CONTRACT NO. 70D18				
ILLINOIS FED. AID PROJECT				

\* D5 LOT IMPROVEMENT 2019-1

**I-14**  
INLET TB T3 F&G  
STA: 3+91.16  
OFF: 409.29' LT.  
T.O.M. = 736.61  
T.O.G. = 737.44  
f<sub>L</sub> IN = 733.53 (6") NE  
f<sub>L</sub> OUT = 733.40 (12") W

**M-15**  
MANHOLE TA 5'0" T1 F C.L.  
STA: 3+89.62  
OFF: 423.15' LT.  
T.O.M. = 736.82  
T.O.G. = 737.57  
f<sub>L</sub> IN = 733.35 (12") E  
f<sub>L</sub> IN = 729.73 (24") E  
f<sub>L</sub> IN = 733.82 (12") SE  
f<sub>L</sub> OUT = 729.63 (24") W

**I-16**  
INLET TB T3 F&G  
STA: 3+87.09  
OFF: 486.87' LT.  
T.O.M. = 736.11  
T.O.G. = 736.94  
f<sub>L</sub> OUT = 733.00 (12") W

**M-17**  
MANHOLE TA 6'0" T1 F C.L.  
STA: 3+88.99  
OFF: 501.03' LT.  
T.O.M. = 736.57  
T.O.G. = 737.32  
f<sub>L</sub> IN = 729.63 (15") NE  
f<sub>L</sub> IN = 732.95 (12") E  
f<sub>L</sub> IN = 729.50 (24") E  
f<sub>L</sub> IN = 732.95 (12") W  
f<sub>L</sub> IN = 730.16 (15") NW  
f<sub>L</sub> OUT = 729.40 (24") W

**I-18**  
INLET TB T3 F&G  
STA: 3+87.09  
OFF: 515.40' LT.  
T.O.M. = 736.16  
T.O.G. = 736.99  
f<sub>L</sub> OUT = 733.03 (12") E

**M-19**  
MANHOLE TA 5'0" T1 F C.L.  
STA: 3+29.21  
OFF: 547.40' LT.  
T.O.M. = 737.53  
T.O.G. = 738.28  
f<sub>L</sub> IN = 729.25 (24") NE  
f<sub>L</sub> IN = 729.42 (15") E  
f<sub>L</sub> IN = 734.41 (6") E  
f<sub>L</sub> IN = 729.90 (6") W  
f<sub>L</sub> OUT = 729.15 (24") W

**REGULATED SUBSTANCES**  
NOTE: SOIL CLASSIFICATION LABELED IN CORNER OF BOX AS 669.05 (a)(#)  
a=LETTER  
#=NUMBER

**M-20**  
MANHOLE TA 4'0" T1 F C.L.  
STA: 2+98.37  
OFF: 608.58' LT.  
T.O.M. = 738.10  
T.O.G. = 738.85  
f<sub>L</sub> IN = 729.00 (24") NE  
f<sub>L</sub> IN = 733.20 (15") NW  
f<sub>L</sub> OUT = 728.85 (24") S

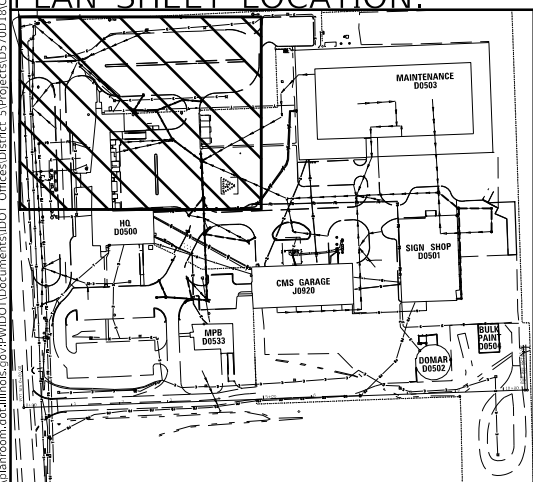
**M-21**  
MANHOLE TA 5'0" T1 F C.L.  
STA: 2+51.38  
OFF: 611.03' LT.  
T.O.M. = 738.67  
T.O.G. = 739.42  
f<sub>L</sub> IN = 728.75 (24") N  
f<sub>L</sub> IN = 728.75 (15") NE  
f<sub>L</sub> IN = 733.85 (12") NW  
f<sub>L</sub> OUT = 728.65 (24") SW

**I-22**  
INLET TB T3 F&G  
STA: 2+71.71  
OFF: 641.35' LT.  
T.O.M. = 737.13  
T.O.G. = 737.96  
f<sub>L</sub> OUT = 734.04 (12") SE

**I-23**  
INLET TB T3 F&G  
STA: 3+54.07  
OFF: 629.22' LT.  
T.O.M. = 736.78  
T.O.G. = 737.61  
f<sub>L</sub> IN = 733.50 (15") N  
f<sub>L</sub> OUT = 733.40 (15") SE

**I-24**  
INLET TB T3 F&G  
STA: 3+91.99  
OFF: 625.17' LT.  
T.O.M. = 736.54  
T.O.G. = 737.37  
f<sub>L</sub> OUT = 733.75 (15") S

**PLAN SHEET LOCATION:**



NO PROPOSED WORK PAST NORTHERN LIMITS OF THIS SHEET

MODEL: s:\MODEL\MHETS... FILE: MHETS... PROJECT: 2019-1... CONTRACT NO. 70D18

USER NAME = HodgsonRA	DESIGNED -	REVISED -
PLOT SCALE = 40,0000' / in.	DRAWN -	REVISED -
PLOT DATE = 3/18/2019	CHECKED -	REVISED -
	DATE -	REVISED -

**STATE OF ILLINOIS  
DEPARTMENT OF TRANSPORTATION**

**PROPOSED PLANS - D5 HQ**

SCALE: SHEET OF SHEETS STA. TO STA.

F.A.P. RTE.	SECTION	COUNTY	TOTAL SHEETS	SHEET NO.
IDOT	*	EDGAR	29	22
CONTRACT NO. 70D18			ILLINOIS FED. AID PROJECT	

\* D5 LOT IMPROVEMENT 2019-1



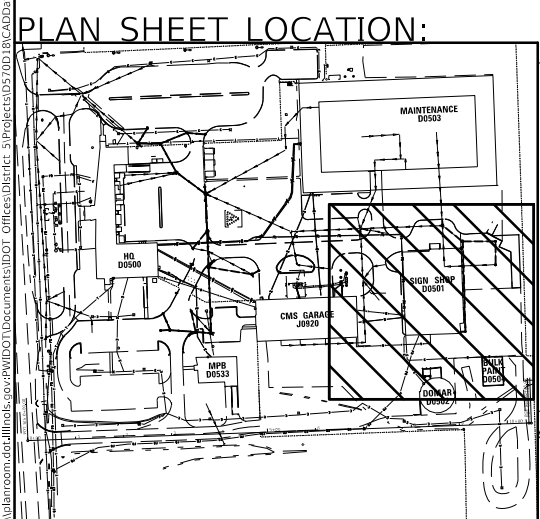
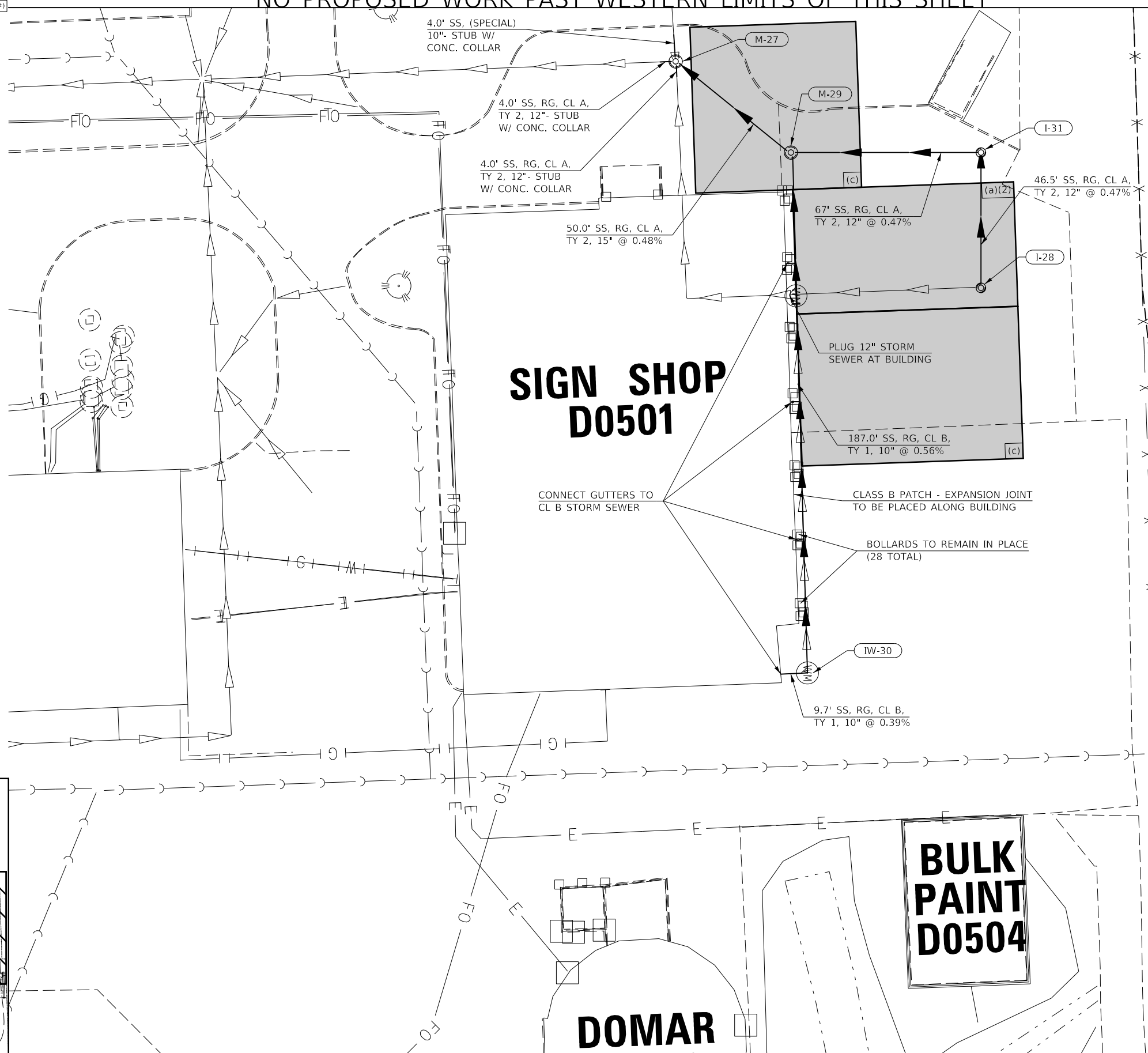
NO PROPOSED WORK PAST WESTERN LIMITS OF THIS SHEET

- M-27**  
MANHOLE TA 4'Ø T1 F C.L.  
STA: 8+79.40  
OFF: 417.81' LT.  
T.O.M. = 737.16  
T.O.G. = 737.91  
f<sub>L</sub> IN = 730.59 (12") NE  
f<sub>L</sub> IN = 730.74 (12") E  
f<sub>L</sub> IN = 730.78 (10") W  
f<sub>L</sub> OUT = 730.49 (12") S
- I-28**  
INLET TB T1 F O.L.  
STA: 9+86.86  
OFF: 332.14' LT.  
T.O.M. = 735.44  
T.O.G. = 736.19  
f<sub>L</sub> OUT = 731.56 (12") W
- M-29**  
MANHOLE TA 4'Ø T1 F C.L.  
STA: 9+19.90  
OFF: 381.03' LT.  
T.O.M. = 736.23  
T.O.G. = 736.98  
f<sub>L</sub> IN = 730.93 (12") N  
f<sub>L</sub> IN = 733.55 (10") E  
f<sub>L</sub> OUT = 730.83 (12") SW
- IW-30**  
INSPECTION WELL  
STA: 9+19.31  
OFF: 195.14' LT.  
T.O.M. = 735.90  
T.O.G. = 736.57  
f<sub>L</sub> IN = 734.60 (10") S  
f<sub>L</sub> OUT = 734.60 (10") W
- I-31**  
INLET TB T1 F O.L.  
STA: 9+88.56  
OFF: 381.03' LT.  
T.O.M. = 735.68  
T.O.G. = 736.43  
f<sub>L</sub> IN = 731.34 (12") E  
f<sub>L</sub> OUT = 731.24 (12") S

REGULATED SUBSTANCES

NOTE: SOIL CLASSIFICATION LABELED IN CORNER OF BOX AS 669.05 (a)(#)

α=LETTER  
#=NUMBER



# SIGN SHOP D0501

# BULK PAINT D0504

# DOMAR

STATE OF ILLINOIS  
DEPARTMENT OF TRANSPORTATION

PROPOSED PLANS - D5 HQ

USER NAME = HodgsonRA	DESIGNED -	REVISED -
PLOT SCALE = 40.0000' / in.	DRAWN -	REVISED -
PLOT DATE = 3/18/2019	CHECKED -	REVISED -
	DATE -	REVISED -

SCALE:	SHEET	OF	SHEETS	STA.	TO	STA.
--------	-------	----	--------	------	----	------

F.A.P. RTE.	SECTION	COUNTY	TOTAL SHEETS	SHEET NO.
IDOT	*	EDGAR	29	23
CONTRACT NO. 70D18				
ILLINOIS FED. AID PROJECT				

MODEL: s:\MODEL\MHFE  
 FILE: mhfe\_20190318.dwg  
 PROJECT: s:\PROJECTS\DOT\Office\Director\Projects\DOT\70D18\HQ\Proposed-Sections.dwg

\* D5 LOT IMPROVEMENT 2019-1

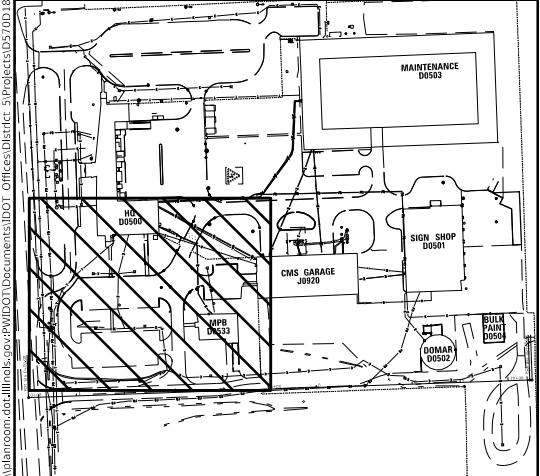
REGULATED SUBSTANCES

NOTE: SOIL CLASSIFICATION LABELED IN CORNER OF BOX AS 669.05 (a)(#)  
 α=LETTER  
 #=NUMBER

**HQ  
D0500**

**MPB  
D0533**

PLAN SHEET LOCATION:



MODEL: \\MODEL\NAME  
 FILE: \\NAME: \\PROJECT\Documents\IDOT Office\Drawings\Projects\052018\CADD\DATA\CAD\Sheet\052018-18-18-18-18-18.dgn

USER NAME = HodgsonRA	DESIGNED -	REVISED -
	DRAWN -	REVISED -
PLOT SCALE = 40,0000' / in.	CHECKED -	REVISED -
PLOT DATE = 3/18/2019	DATE -	REVISED -

**STATE OF ILLINOIS  
DEPARTMENT OF TRANSPORTATION**

<b>EROSION CONTROL</b>	
SCALE:	SHEET 1 OF 3 SHEETS STA. TO STA.

F.A.P. RTE.	SECTION	COUNTY	TOTAL SHEETS	SHEET NO.
IDOT	*	EDGAR	29	24
CONTRACT NO. 70D18				
ILLINOIS FED. AID PROJECT				

\* D5 LOT IMPROVEMENT 2019-1

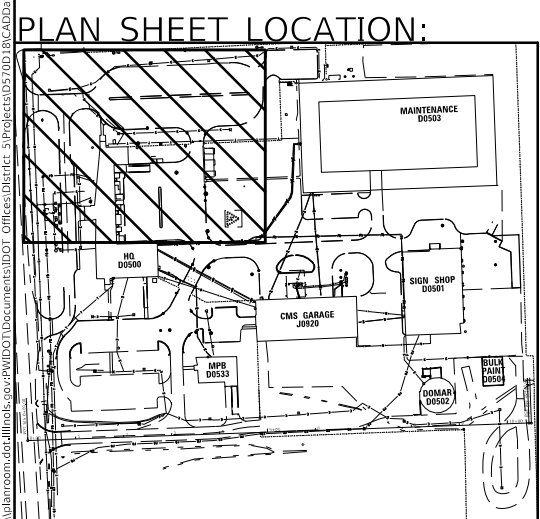


REGULATED SUBSTANCES

NOTE: SOIL CLASSIFICATION LABELED IN CORNER OF BOX AS 669.05 (a)(#)  
 α=LETTER  
 #=NUMBER



NO PROPOSED WORK PAST NORTHERN LIMITS OF THIS SHEET



MODEL: s:\MODEL\MHMF5  
 FILE: MHMF5\_Plan.dwg  
 PROJECT: D:\Projects\DOT\Documents\DOT\_Offices\Director\_5\Projects\0570018\CADD\DATA\CAD\Sheet\0570018-5-18-Erosion.dgn

USER NAME = HodgsonRA	DESIGNED -	REVISED -
PLOT SCALE = 40.0000 ' / in.	DRAWN -	REVISED -
PLOT DATE = 3/18/2019	CHECKED -	REVISED -
	DATE -	REVISED -

**STATE OF ILLINOIS  
 DEPARTMENT OF TRANSPORTATION**

<b>EROSION CONTROL</b>	
SCALE:	TO STA.
SHEET 2	OF 3 SHEETS

F.A.P. RTE.	SECTION	COUNTY	TOTAL SHEETS	SHEET NO.
IDOT	*	EDGAR	29	25
CONTRACT NO. 70D18				
ILLINOIS FED. AID PROJECT				

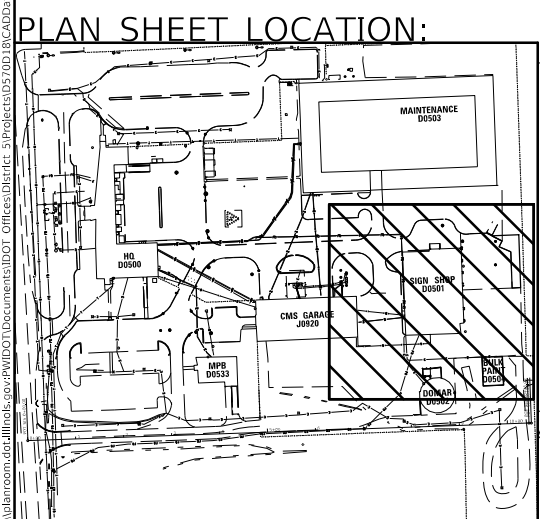
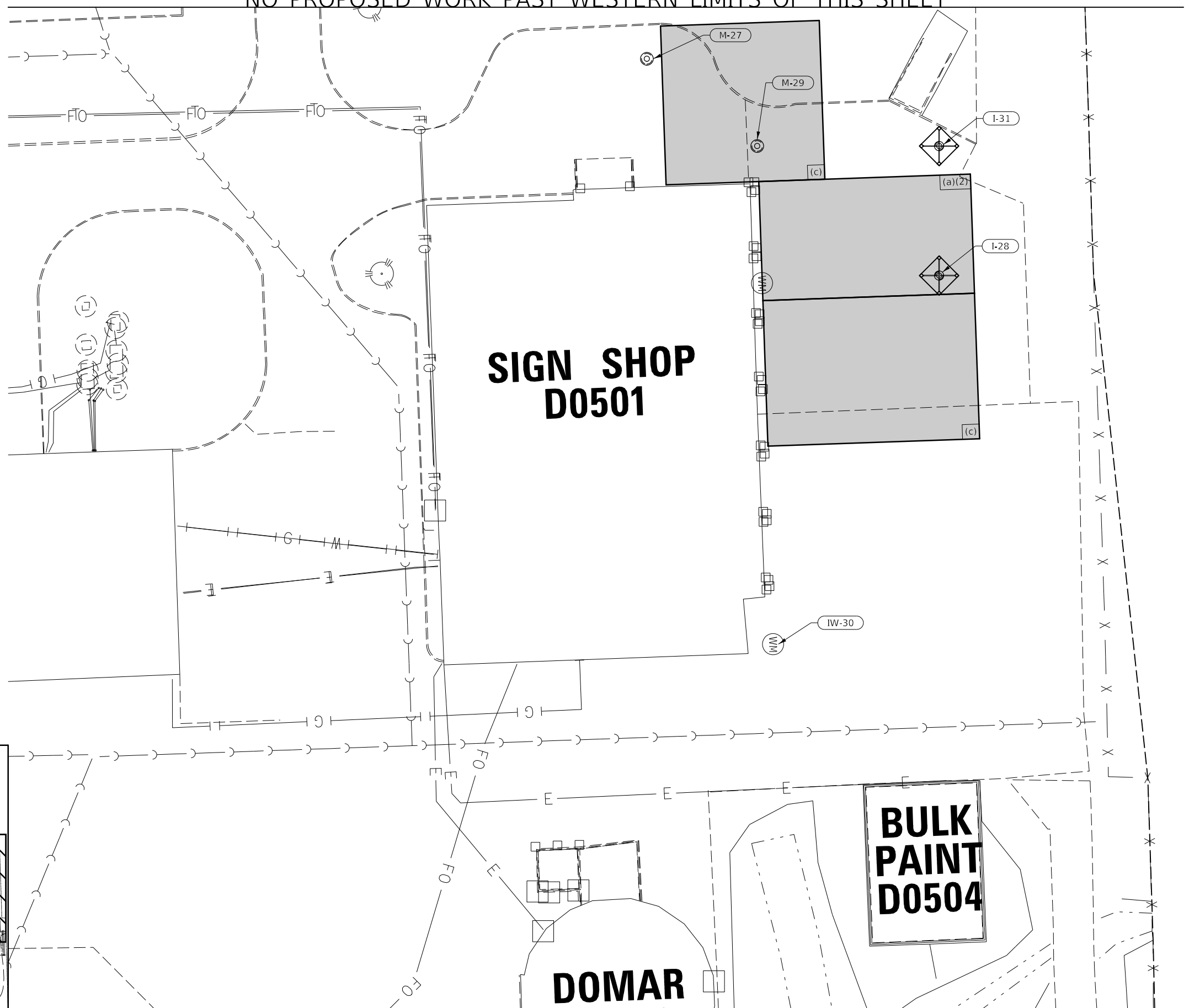
\* D5 LOT IMPROVEMENT 2019-1



REGULATED SUBSTANCES

NOTE: SOIL CLASSIFICATION LABELED IN CORNER OF BOX AS 669.05 [a][#]  
 a=LETTER  
 #=NUMBER

NO PROPOSED WORK PAST WESTERN LIMITS OF THIS SHEET



MODEL: s:\MODEL\MHFE  
 FILE: MHFE\_20190308.dwg  
 PROJECT: s:\PROJECTS\DOT\Office\Director\Projects\DOT\18CAD\DATA\CAD\Sheet\0570D18-18-18-Erosion.dgn

USER NAME = HodgsonRA	DESIGNED -	REVISED -
PLOT SCALE = 40,0000 ' / in.	DRAWN -	REVISED -
PLOT DATE = 3/18/2019	CHECKED -	REVISED -
	DATE -	REVISED -

STATE OF ILLINOIS  
 DEPARTMENT OF TRANSPORTATION

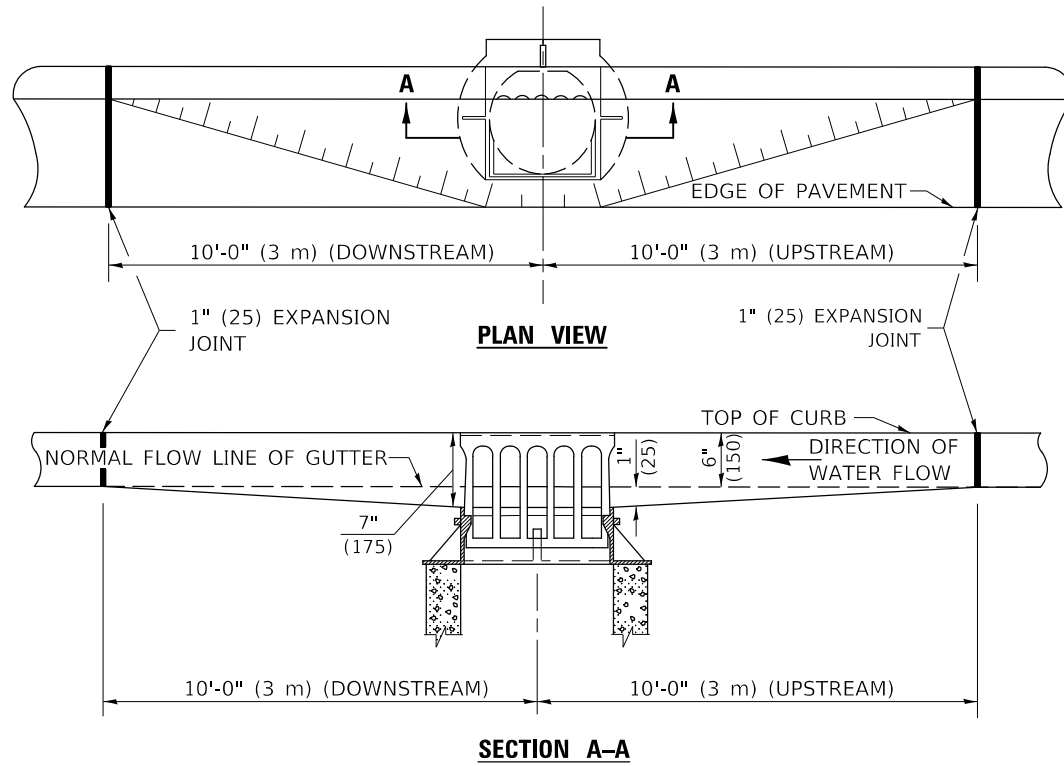
EROSION CONTROL	
SCALE:	SHEET 3 OF 3 SHEETS STA. TO STA.

F.A.P. RTE.	SECTION	COUNTY	TOTAL SHEETS	SHEET NO.
IDOT	*	EDGAR	29	26
CONTRACT NO. 70D18				
ILLINOIS FED. AID PROJECT				

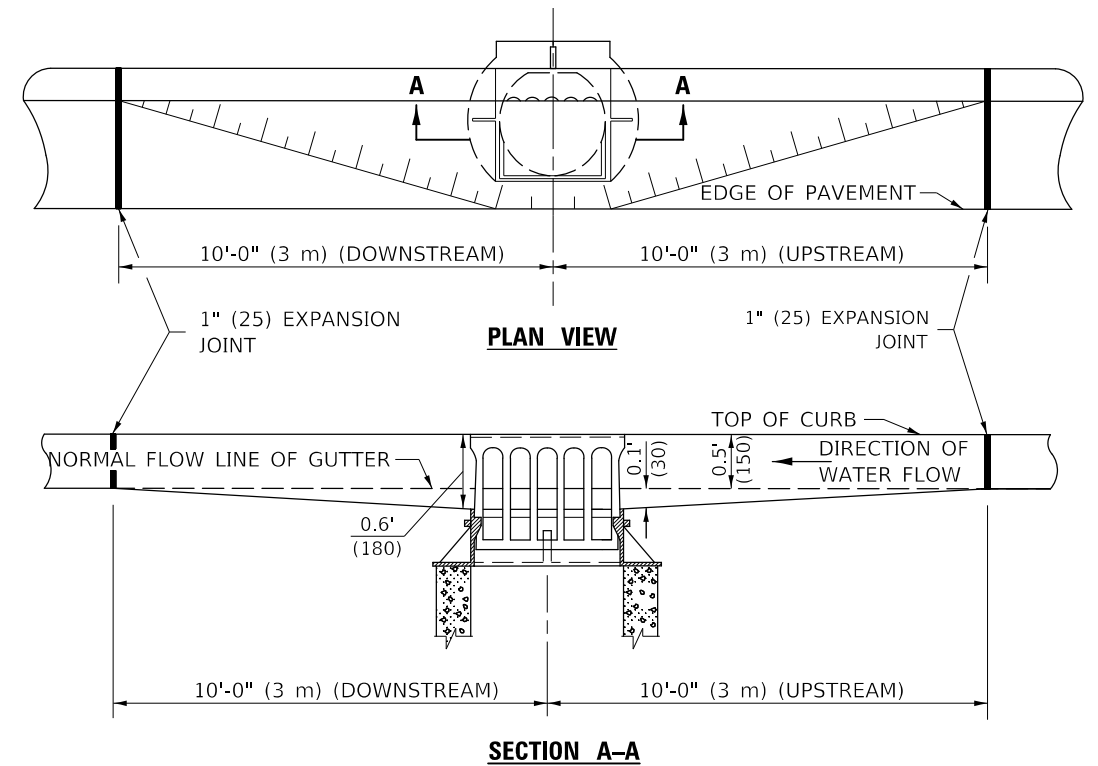
\* D5 LOT IMPROVEMENT 2019-1



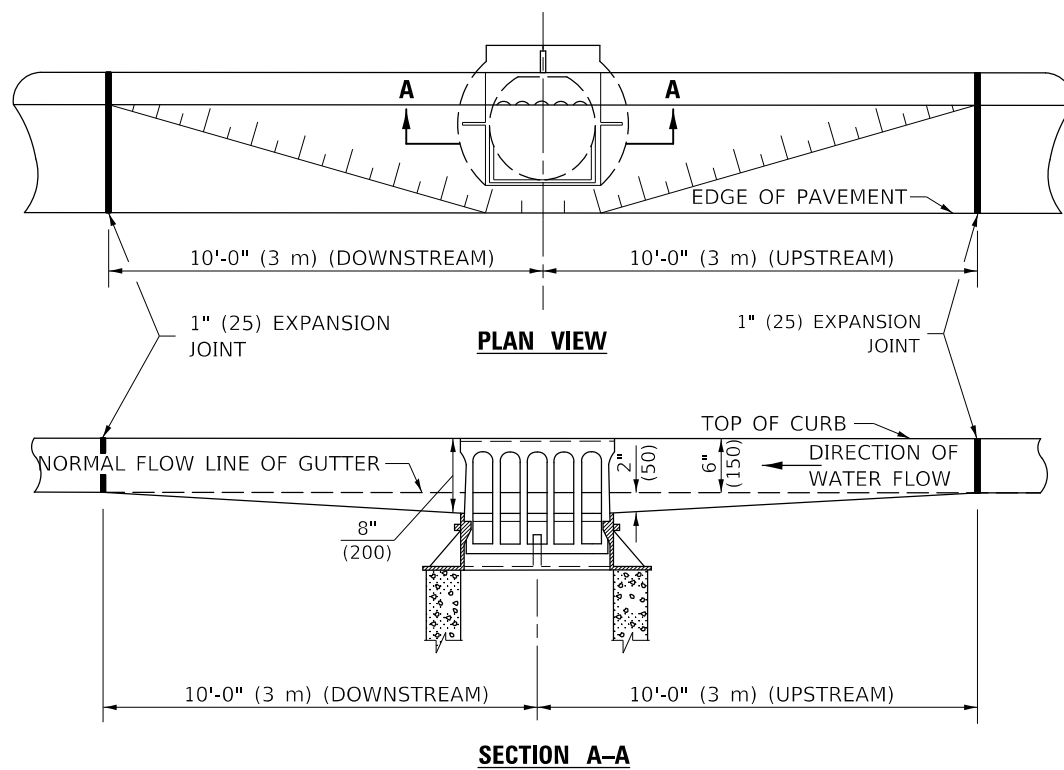
### GUTTER DEPRESSION 1" (25mm)



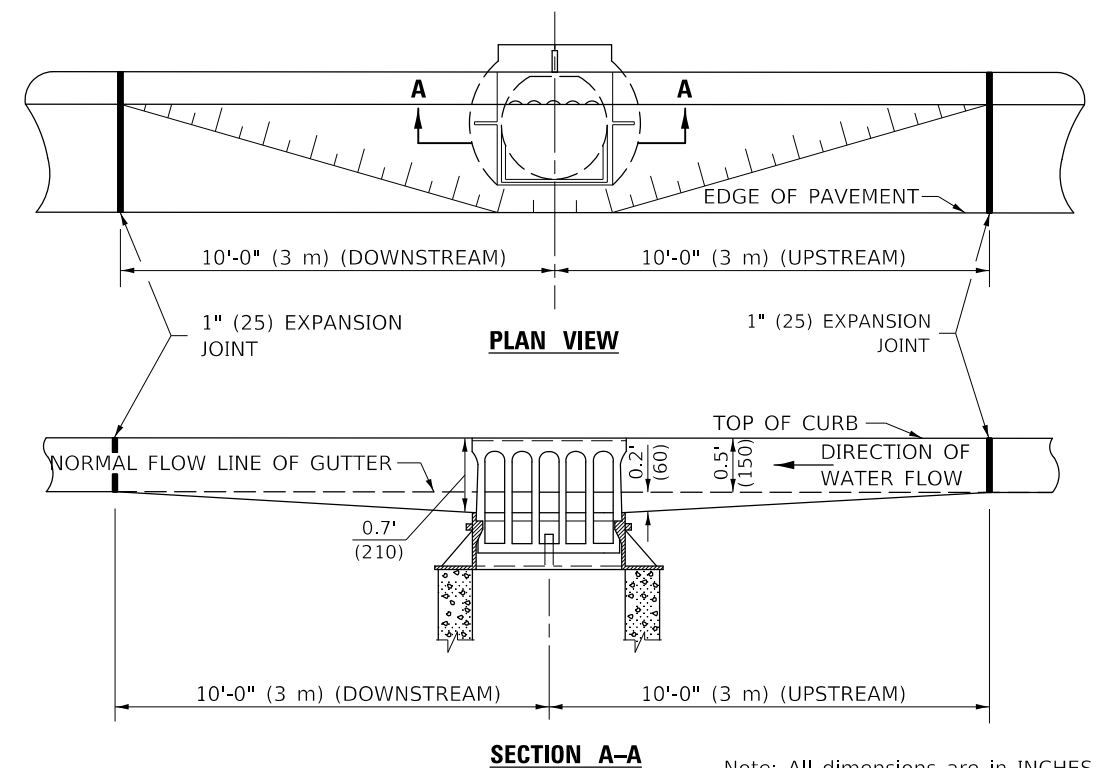
### GUTTER DEPRESSION 0.1 FOOT (30mm)



### GUTTER DEPRESSION 2" (50mm)



### GUTTER DEPRESSION 0.2 FOOT (60mm)



### GENERAL NOTES

1. THE TWO EXPANSION JOINTS SHALL BE PLACED AS SHOWN IN STANDARD 606001.
2. THE GUTTER GRADE SHALL BE DEPRESSED AT ALL INLETS, CATCH BASINS AND MANHOLES UNLESS OTHERWISE SPECIFIED IN THE PLANS.
3. THE COST OF THIS WORK SHALL BE INCLUDED IN THE COST OF THE VARIOUS PAY ITEMS OF WORK INVOLVED.

Note: All dimensions are in INCHES (millimeters) unless otherwise shown.

MODEL: \\MODELNAME  
 FILE: \\NAME.dwg  
 PROJECT: \\PROJECTNAME  
 DATE: 3/18/2019

USER NAME = HodgsonRA	DESIGNED -	REVISED - 11/06
PLOT SCALE = 40,0000 ' / in.	DRAWN -	REVISED -
PLOT DATE = 3/18/2019	CHECKED -	REVISED -
	DATE -	REVISED -

**STATE OF ILLINOIS  
 DEPARTMENT OF TRANSPORTATION**

**GUTTER DEPRESSION AT INLETS, CATCH BASINS AND MANHOLES**

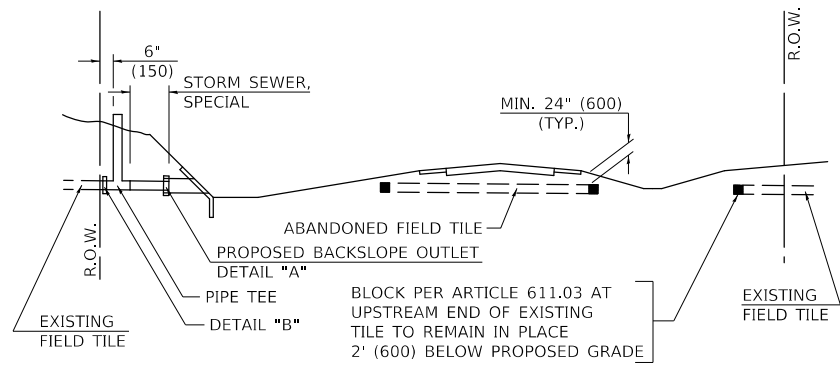
SCALE: SHEET 1 OF 1 SHEETS STA. TO STA.

### DISTRICT 5 DETAIL NO. 606AAAAA

F.A.P. RTE.	SECTION	COUNTY	TOTAL SHEETS	SHEET NO.
IDOT	*	EDGAR	29	28
			CONTRACT NO. 70D18	

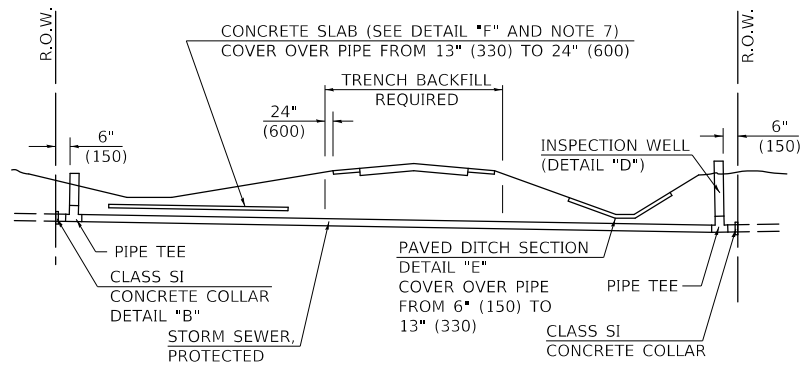
ILLINOIS FED. AID PROJECT

\* D5 LOT IMPROVEMENT 2019-1



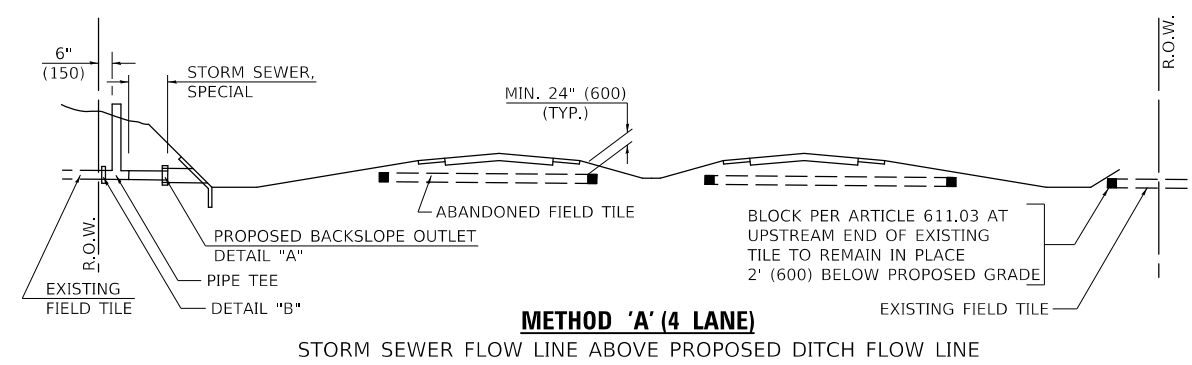
**METHOD 'A' (2 LANE)**

STORM SEWER FLOW LINE ABOVE PROPOSED DITCH FLOW LINE



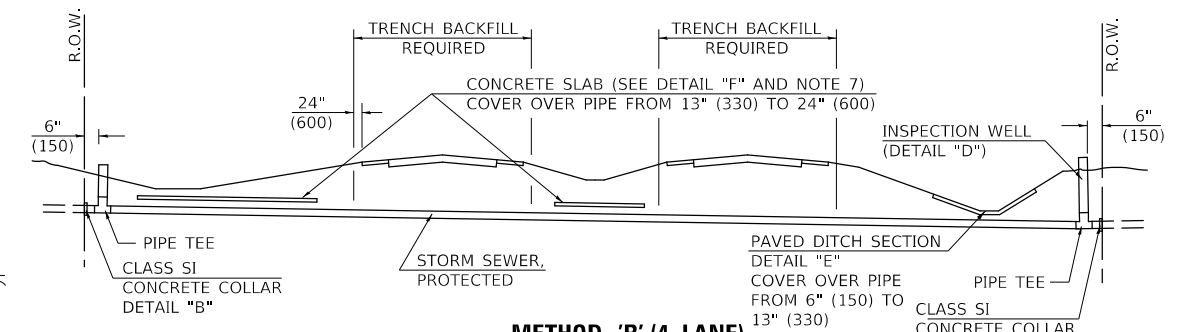
**METHOD 'B' (2 LANE)**

STORM SEWER LESS THAN 2' (600 mm) BELOW DITCH FLOW LINE AND STORM SEWERS CROSSING UNDER PAVEMENT AND PAVED DITCH



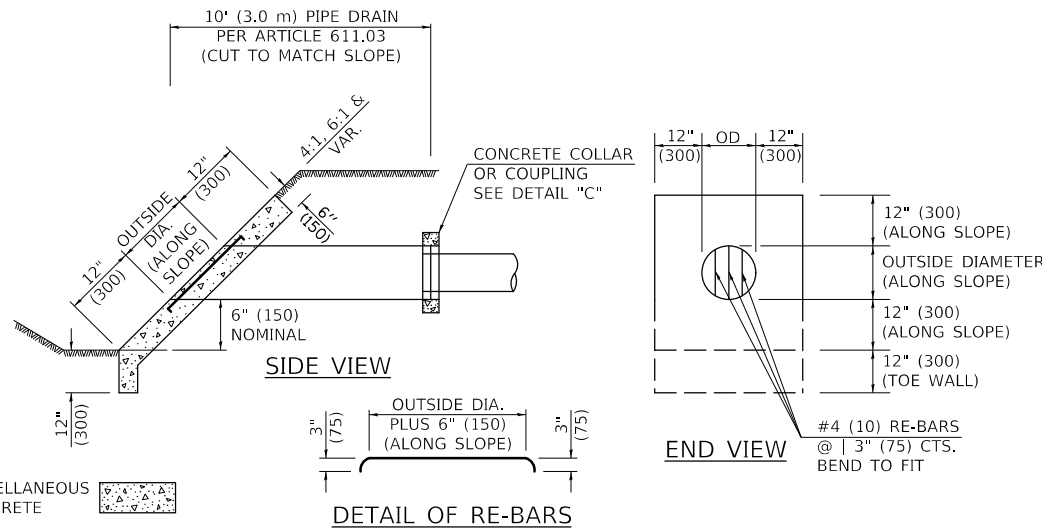
**METHOD 'A' (4 LANE)**

STORM SEWER FLOW LINE ABOVE PROPOSED DITCH FLOW LINE

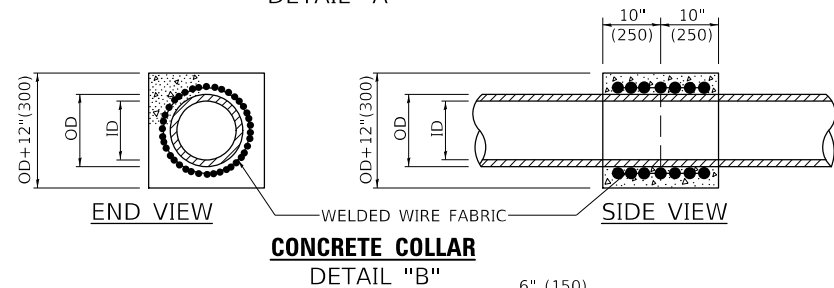


**METHOD 'B' (4 LANE)**

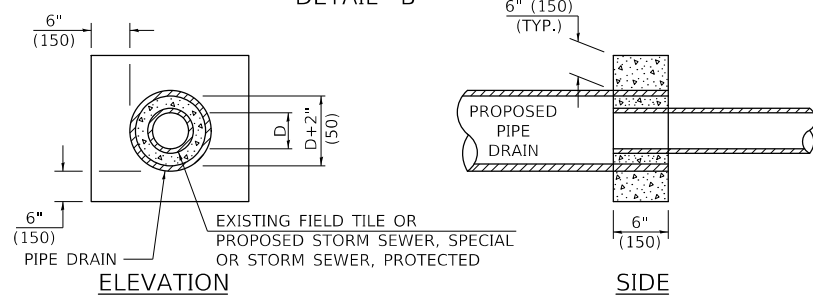
STORM SEWER LESS THAN 2' (600 mm) BELOW DITCH FLOW LINE AND STORM SEWERS CROSSING UNDER PAVEMENTS AND PAVED DITCHES



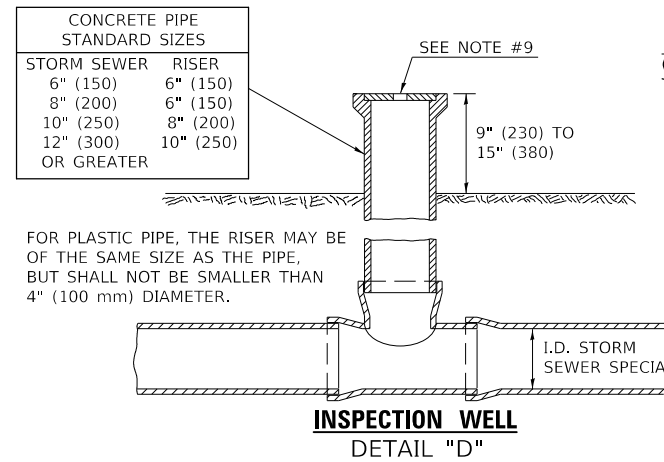
**HEADWALL FOR BACKSLOPE OUTLET**  
DETAIL "A"



**CONCRETE COLLAR**  
DETAIL "B"



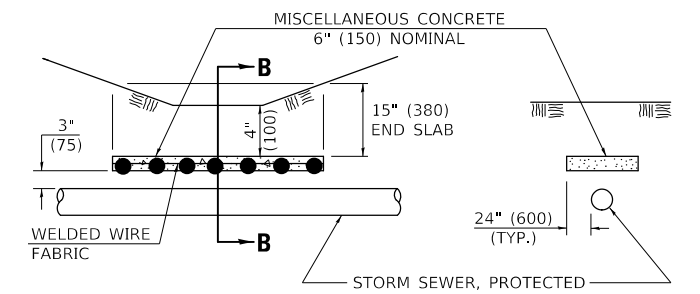
**CLASS SI COLLAR**  
DETAIL "C"



**INSPECTION WELL**  
DETAIL "D"

**GENERAL NOTES**

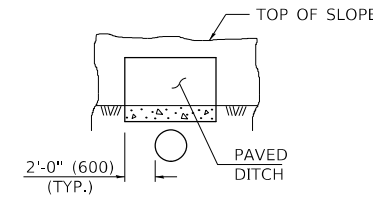
- EXISTING FIELD TILE ENCOUNTERED BY EXPLORATION TRENCH SHALL BE INSPECTED BY THE ENGINEER FOR UNOBSTRUCTED FLOW WITHIN THE LIMITS OF THE RIGHT-OF-WAY.
- ONLY FIELD TILE THAT DOES NOT HAVE SATISFACTORY FLOW AND OR HAS VISIBLE SIGNS OF DETERIORATION (SINK HOLES, ETC.) SHALL BE REPLACED WITHIN THE LIMITS OF THE RIGHT-OF-WAY IN ACCORDANCE WITH METHOD "B".
- INSPECTION WELLS SHALL BE CONSTRUCTED APPROXIMATELY 6" (150 mm) INSIDE OF BOTH RIGHT-OF-WAY LINES AT ALL FIELD TILE LOCATIONS.
- EXISTING FIELD TILE ABANDONED UNDER EXISTING PAVEMENTS OR PAVED SHOULDERS SHALL BE FILLED WITH FLOWABLE GROUT AS DIRECTED BY THE ENGINEER. THIS WORK WILL BE PAID FOR ACCORDING TO ARTICLE 109.04.
- NON-CIRCULAR FIELD TILE SHALL BE REPLACED WITH STORM SEWER, SPECIAL OF AT LEAST THE SAME CROSS SECTIONAL AREA. ALL EXISTING FIELD TILE SHALL BE REPLACED WITH STORM SEWER OF THE TYPE REQUIRED FOR THE MINIMUM DEPTH OF COVER.
- THE 6" (150 mm) CONCRETE SLAB OR DITCH LINING SHALL BE POURED THE LENGTH OF THE TRENCH AT ALL DITCH FLOW LINE LOCATIONS WITHIN THE RIGHT-OF-WAY WITH LESS THAN 2' (600 mm) OF EARTH COVER. MISCELLANEOUS CONCRETE SHALL BE USED ACCORDING TO SECTION 611.
- ALL MISCELLANEOUS SLABS, APRONS AND DITCH LININGS SHALL BE REINFORCED WITH WELDED WIRE FABRIC AS SHOWN FOR PAVED DITCH IN STANDARD 606401.
- HEADWALL FOR BACKSLOPE OUTLET MAY BE USED FOR PIPE DRAIN DIAMETERS UP TO 10" (250 mm). SPECIAL DESIGNS WILL BE REQUIRED FOR LARGER SIZES.
- THE INSPECTION WELL LID FOR P.C.C. PIPE SHALL BE CONSTRUCTED OF 3/8" (10 mm) CAST IRON AND PROVIDED WITH A 1" (25 mm) DIAMETER HOLE IN CENTER. THE LID FOR THE OTHER PIPE MATERIALS SHALL BE A GRATE ASSEMBLY PREFABRICATED FOR AND COMPATIBLE WITH THE PIPE SYSTEM.



**SLAB ELEVATION**

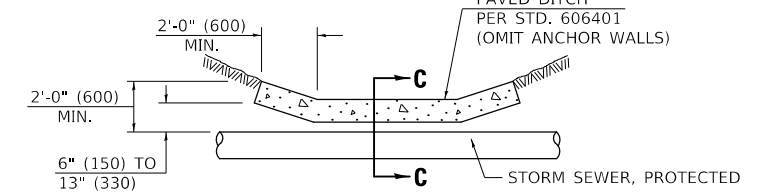
**CONCRETE SLAB**  
DETAIL "F"

**SECTION B-B**



**SECTION C-C**

**PAVED DITCH**  
DETAIL "E"



**PAVED DITCH ELEVATION**

Note: All dimensions are in INCHES (millimeters) unless otherwise shown.

**DISTRICT 5 DETAIL NO. 61101011A**

USER NAME = HodgsonRA	DESIGNED -	REVISED - 11/06
PLOT SCALE = 40,0000 ' / in.	DRAWN -	REVISED -
PLOT DATE = 3/18/2019	CHECKED -	REVISED -
	DATE -	REVISED -

**STATE OF ILLINOIS**  
**DEPARTMENT OF TRANSPORTATION**

**FIELD TILE SYSTEMS (TREATMENT OF EXISTING)**

SCALE: SHEET 1 OF 1 SHEETS STA. TO STA.

F.A.P. RTE.	SECTION	COUNTY	TOTAL SHEETS	SHEET NO.
IDOT	*	EDGAR	29	29
				CONTRACT NO. 70D18

ILLINOIS FED. AID PROJECT

\* D5 LOT IMPROVEMENT 2019-1

MODEL: s:\MODEL\MATF... FILE: s:\matf... PROJECT: 05700118\CAD\DATA\CAD\INRES\05700118-INT-Detail.dwg