

STATE OF ILLINOIS
DEPARTMENT OF TRANSPORTATION

F.A.I. RTE.	SECTION	COUNTY	TOTAL SHEET NO.
39	(50-1,2,3)PP	LASALLE	15
		ILLINOIS	CONTRACT NO. 66J84

INDEX OF SHEETS

- 1 COVER SHEET
- 2 GENERAL NOTES
- 3-4 SUMMARY OF QUANTITIES
- 5 TYPICAL SECTIONS
- 6-10 SCHEDULE OF QUANTITIES
- 11-14 DETAILS
- 16 701400 STANDARD (SPECIAL)

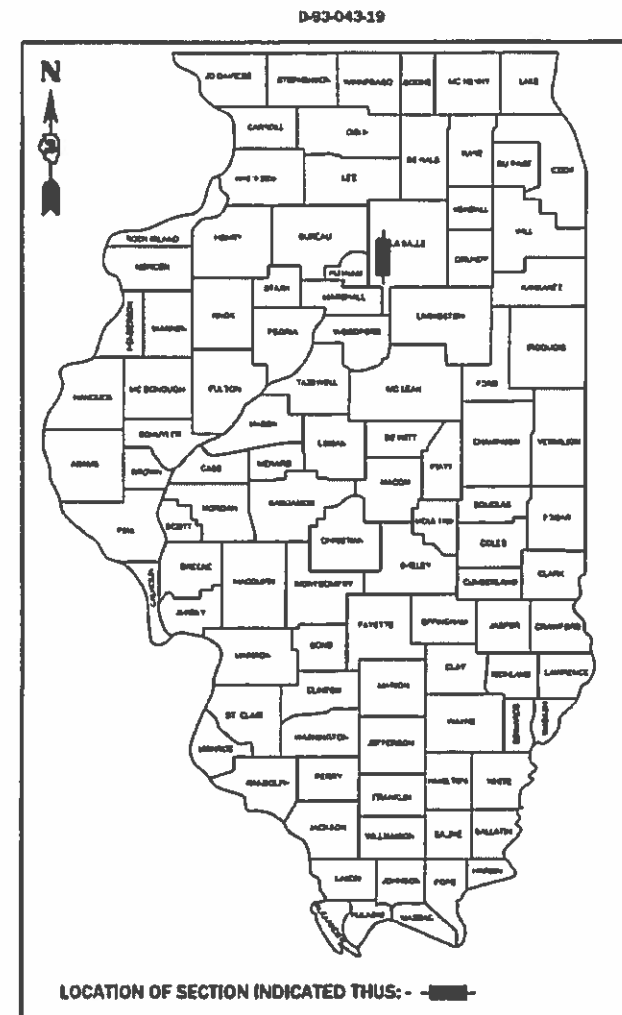
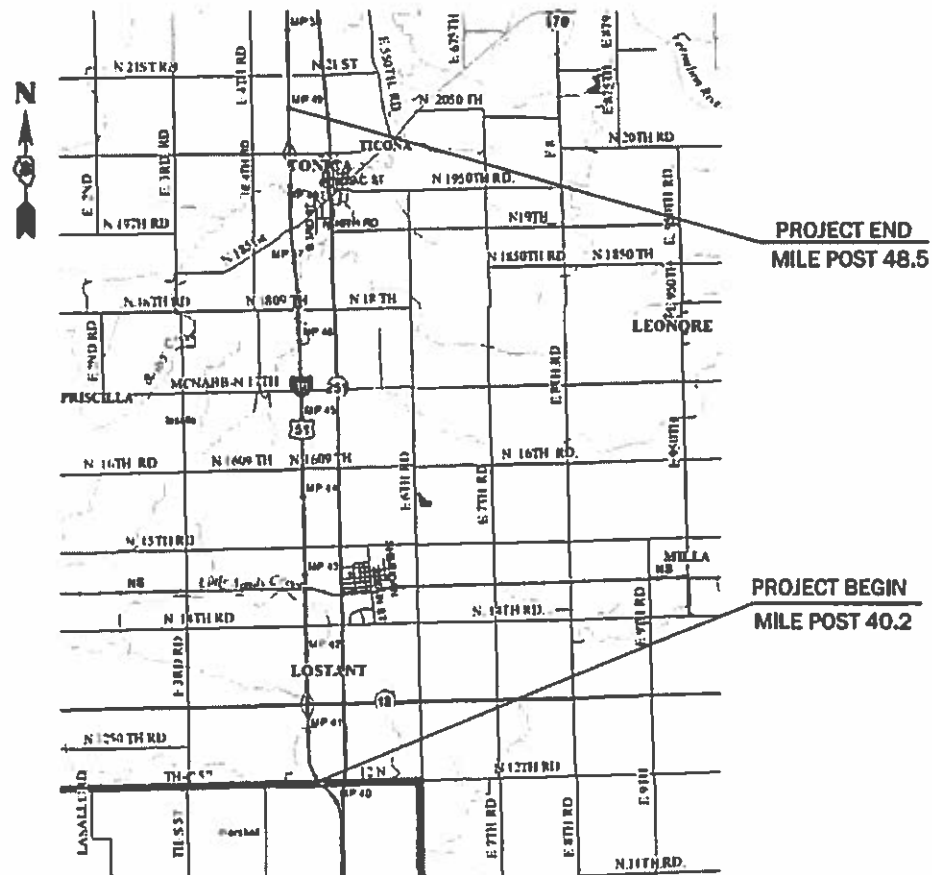
LIST OF ILLINOIS DOT HIGHWAY STANDARDS

- 000001-07 STANDARD SYMBOLS, ABBREVIATIONS AND PATTERNS
- 001006 DECIMAL OF AN INCH AND OF A FOOT
- 701101-05 OFF-ROAD OPERATIONS, MULTILANE, 15' (4.5 m) TO 24' (600 mm) FROM PAVEMENT EDGE
- 701400-09 APPROACH TO LANE CLOSURE, FREEWAY/EXPRESSWAY
- 701401-12 LANE CLOSURE, FREEWAY/EXPRESSWAY
- 701406 12 LANE CLOSURE, FREEWAY/EXPRESSWAY, DAY OPERATIONS ONLY
- 701411-09 LANE CLOSURE, MULTILANE, AT ENTRANCE OR EXIT RAMP FOR SPEEDS ≥ 50 mph
- 701426-09 LANE CLOSURE, MULTILANE INTERMITTENT OR MOVING OPERATION, FOR SPEEDS ≥ 50 mph
- 701428-01 TRAFFIC CONTROL, SETUP AND REMOVAL, FREEWAY/EXPRESSWAY
- 701901-08 TRAFFIC CONTROL DEVICES
- 780001-05 TYPICAL PAVEMENT MARKINGS
- 781001-04 TYPICAL APPLICATIONS RAISED REFLECTIVE PAVEMENT MARKERS
- 701106-02 OFF-ROAD OPERATIONS, MULTILANE, MORE THAN 15' (4.5 m) AWAY

PROPOSED
HIGHWAY PLANS

ROUTE FAI 39 (I-39)
SECTION (50-1,2,3)PP
PROJECT STATE
PAVEMENT PATCHING
LASALLE COUNTY

C-93-067-19



FUNCTIONAL CLASSIFICATION: INTERSTATE

2017 ADT = 19,800 VPD
PV% = 59.59 SU% = 9.23 MU% = 31.18

STATE OF ILLINOIS
DEPARTMENT OF TRANSPORTATION

SUBMITTED 05/24 2019
Kim Mardock and
May 19 2019 REGIONAL ENGINEER
cc E.A. ETC
ENGINEER OF DESIGN AND ENVIRONMENT
May 19 2019
Paul J. Cook
DIRECTOR OF HIGHWAYS PROJECT IMPLEMENTATION

PRINTED BY THE AUTHORITY
OF THE STATE OF ILLINOIS



FULL SIZE PLANS HAVE BEEN PREPARED USING STANDARD ENGINEERING SCALES. REDUCED SIZED PLANS WILL NOT CONFORM TO STANDARD SCALES. IN MAKING MEASUREMENTS ON REDUCED PLANS, THE ABOVE SCALES MAY BE USED.

J.U.L.I.E.
JOINT UTILITY LOCATION INFORMATION FOR EXCAVATION
1-800-892-0123
DR 811

PROJECT ENGINEER: JOE KANNEL, PE
UNIT CHIEF: ARLENE OTERO-FEBUS
DISTRICT 3 NO. (815) 434-6131
CONTRACT NO. 66J84

GROSS LENGTH = 44774.5 FT. = 8.5 MILE
NET LENGTH = 44774.5 FT. = 8.5 MILE

GENERAL NOTES

THE INTENT OF THIS PROJECT IS TO ROUT AND SEAL WORKING TRANSVERSE CRACKS AND PRIMARY LONGITUDINAL CRACKS GREATER THAN 1/4" IN WIDTH. SECONDARY CRACKS GREATER THAN 1/4" IN WIDTH SHALL BE SEALED.

THERE ARE NO QUANTITIES TO REPAIR PAVEMENT MARKING, SO CARE SHOULD BE TAKEN TO AVOID DAMAGING EXISTING PAVEMENT MARKINGS. LONGITUDINAL CRACKS THAT CONFLICT WITH THE EXISTING PAVEMENT MARKINGS SHALL NOT BE SEALED.

ALL PCC BRIDGE DECKS SHALL BE OMITTED. BRIDGE DECKS WITH HMA OVERLAYS ARE TO BE SEALED ONLY (NO ROUTING).

PLAN DIMENSIONS AND DETAILS RELATIVE TO EXISTING PLANS ARE SUBJECT TO NOMINAL CONSTRUCTION VARIATIONS. THE CONTRACTOR SHALL FIELD VERIFY EXISTING DIMENSIONS AND DETAILS AFFECTING NEW CONSTRUCTION AND MAKE NECESSARY APPROVED ADJUSTMENTS PRIOR TO CONSTRUCTION OR ORDERING OF MATERIALS. SUCH VARIATIONS SHALL NOT BE CAUSE FOR ADDITIONAL COMPENSATION FOR A CHANGE IN SCOPE OF WORK; HOWEVER, THE CONTRACTOR WILL BE PAID FOR THE QUANTITY ACTUALLY FURNISHED AT THE UNIT PRICE BID FOR THE WORK.

ALL EXCAVATED MATERIAL, WHICH INCLUDES DIGGING OR GRADING OF ANY SOIL OR FILL MATERIAL, WITH THE EXCEPTION OF AGGREGATE FILLS, MUST BE INCORPORATED WITHIN THE IDOT RIGHT OF WAY DUE TO ENVIRONMENTAL DOCUMENTATION REQUIREMENTS.

ANY REFERENCE TO A STANDARD IN THESE PLANS SHALL BE INTERPRETED TO MEAN THE EDITION AS INDICATED BY THE SUBNUMBER SHOWN IN THE LIST OF STANDARDS OR THE COPY INCLUDED IN THESE PLANS.

THE FOLLOWING RATES OF APPLICATION HAVE BEEN USED IN CALCULATING PLAN QUANTITIES:

CRACK FILLING MATERIAL	0.35	POUNDS/FOOT
MIX FOR CRACKS, JTS & FLGWYS	0.0003	TONS / SQ YD

THE CONTRACTOR SHALL CONTACT JULIE AT LEAST 48 HOURS PRIOR TO EXCAVATION TO DETERMINE WHICH UTILITIES ARE IN THE AREA.

HMA MIXTURE REQUIREMENT TABLE	
LOCATION(S):	I- 39 LONGITUDINAL PARTIAL DEPTH PATCHES
MIXTURE USE(S):	HMA SURFACE
BINDER GRADE (PG):	PG 64-22
DESIGN AIR VOIDS:	4.0% @ N90
MIXTURE COMPOSITION (MIXTURE GRADATION):	IL 9.5
FRICTION AGGREGATE:	MIXTURE D
MIXTURE WEIGHT:	112.0 LB/SY/IN
QUALITY MANAGEMENT PROGRAM:	QC/QA
SUBLOT SIZE:	N/A
DENSITY TEST METHOD:	CORES/NUCLEAR

STATE OF ILLINOIS
DEPARTMENT OF TRANSPORTATION
DISTRICT THREE
AS BUILT INFORMATION

SUPERVISING CONSTRUCTION FIELD ENGINEER

RESIDENT ENGINEER / TECHNICIAN

START & END DATES
OF CONSTRUCTION:

INSPECTORS:

STATE OF ILLINOIS
DEPARTMENT OF TRANSPORTATION
DISTRICT THREE

PREPARED BY: Paul Barick (enr)
DISTRICT STUDIES & PLANS ENGINEER

DATE: 03/26/19

EXAMINED BY: Kyle Vest
DISTRICT CONSTRUCTION ENGINEER
Michael Short
DISTRICT MATERIALS ENGINEER
Ron Hays
DISTRICT OPERATIONS ENGINEER

FILE NAME =	USER NAME = NOLASCDCJ	DESIGNED -	REVISED -
pw\planner\room.doc\illinois.gov\PI\DOT\Documents\DOT	Office\District 3\Projects\0366J84\CAD\plan\0366J84-01-scove	DRAWN -	REVISED -
Default	PLOT SCALE = 100.0000 1/in.	CHECKED -	REVISED -
	PLOT DATE = 3/25/2019	DATE -	REVISED -

STATE OF ILLINOIS
DEPARTMENT OF TRANSPORTATION

GENERAL NOTES

SCALE: SHEET 1 OF 1 SHEETS STA: STA

F.A.I. RTE.	SECTION	COUNTY	TOTAL SHEETS	SHEET NO.
39	(50-1.2.3) PP	LASALLE	15	2
CONTRACT NO. 66J84				
ILLINOIS FED. AID PROJECT				

CODE NO.	ITEM	UNIT	TOTAL QUANTITY	CONSTR. CODE
				STATE FUNDING ROADWAY
				0006
				RURAL
40600290	BITUMINOUS MATERIALS (TACK COAT)	POUND	1107	1107
40600400	MIXTURE FOR CRACKS, JOINTS, AND FLANGEWAYS	TON	0.9	0.9
44200553	CLASS A PATCHES, TYPE II, 10 INCH	SQ YD	1252	1252
44200557	CLASS A PATCHES, TYPE III, 10 INCH	SQ YD	276	276
44200559	CLASS A PATCHES, TYPE IV, 10 INCH	SQ YD	180	180
44213000	PATCHING REINFORCEMENT	SQ YD	1708	1708
44213200	SAW CUTS	FOOT	6476	6476
44213204	TIE BARS 3/4"	EACH	7522	7522
45100100	CRACK ROUTING (PAVEMENT)	FOOT	390245	390245
45100200	CRACK FILLING	POUND	136590	136590
67100100	MOBILIZATION	L SUM	1	1
70100420	TRAFFIC CONTROL AND PROTECTION, STANDARD 701411	EACH	8	8
70103815	TRAFFIC CONTROL SURVEILLANCE	CAL DA	24	24
70107025	CHANGEABLE MESSAGE SIGN	CAL DA	28	28

MODEL: Default
 FILE NAME: P:\pub\p1anroom.dat\illinois.gov\PI\DOT\Documents\DOT_Offices\District_3\Projects\036618\IC\0366184-rtt-details.dgn

USER NAME = NOLASCOCJ	DESIGNED -	REVISED -
	DRAWN -	REVISED -
PLOT SCALE = 100.0000' / in.	CHECKED -	REVISED -
PLOT DATE = 3/26/2019	DATE -	REVISED -

**STATE OF ILLINOIS
DEPARTMENT OF TRANSPORTATION**

SUMMARY OF QUANTITIES

SCALE: SHEET 1 OF 2 SHEETS STA. TO STA.

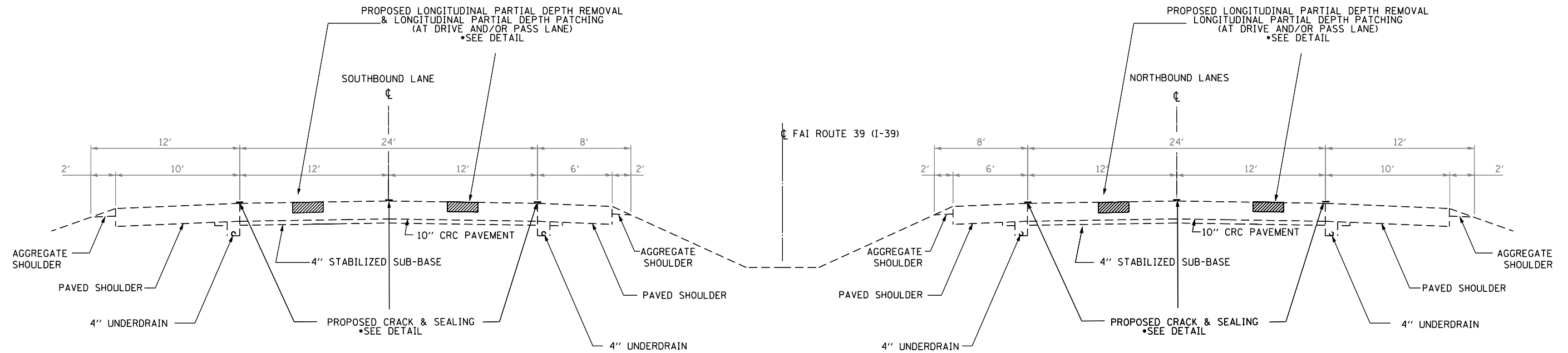
F.A.I RTE.	SECTION	COUNTY	TOTAL SHEETS	SHEET NO.
39	(50-1,2,3)PP	LASALLE	15	3
CONTRACT NO. 66J84			ILLINOIS FED. AID PROJECT	

CODE NO.	ITEM	UNIT	TOTAL QUANTITY	CONSTR. CODE
				STATE FUNDING
				ROADWAY
				0006 RURAL
* 78008210	POLYUREA PAVEMENT MARKING TYPE I - LINE 4"	FOOT	1282	1282
* 78008230	POLYUREA PAVEMENT MARKING TYPE I - LINE 6"	FOOT	1630	1630
* 78100100	RAISED REFLECTIVE PAVEMENT MARKER	EACH	45	45
78300200	RAISED REFLECTIVE PAVEMENT MARKER REMOVAL	EACH	45	45
X4405020	LONGITUDINAL PARTIAL DEPTH REMOVAL 2"	FOOT	11048	11048
X4420900	LONGITUDINAL PARTIAL DEPTH PATCHING	TON	274.9	274.9
X7010805	TRAFFIC CONTROL AND PROTECTION, STANDARD 701401 (SPECIAL)	L SUM	1	1

*= SPECIALTY ITEM

MODEL: Default
FILE NAME: P:\pub\lanscom.dwg
PROJECT: \Projects\DOT\Documents\DOT_Offices\District_3\Projects\ID366184\CD\Drawn\ID366184-ht-detaile.dwg

USER NAME = NOLASCOCJ	DESIGNED -	REVISED -	STATE OF ILLINOIS DEPARTMENT OF TRANSPORTATION	SUMMARY OF QUANTITIES				F.A.I. RTE.	SECTION	COUNTY	TOTAL SHEETS	SHEET NO.
PLOT SCALE = 100.0000' / in.	DRAWN -	REVISED -						39	(50-1,2,3)PP	LASALLE	15	4
PLOT DATE = 3/26/2019	CHECKED -	REVISED -		SCALE: SHEET 2 OF 2 SHEETS STA. TO STA.				ILLINOIS FED. AID PROJECT		CONTRACT NO. 66J84		
	DATE -	REVISED -										



I-39 FROM MP 40.2 TO MP 48.5

PERMANENT SURVEY MARKERS

GPS NUMBER	DESCRIPTION	EXISTING MONUMENT TYPE	PROPOSED MONUMENT TYPE	MONUMENT RECORD TO BE RECORDED	RESPONSIBILITY
N/A	NO CENTERLINE CONTROL OR SECTION CORNER PERMANENT SURVEY MARKERS TO BE SET	N/A	N/A	N/A	N/A

THERE ARE NO RECORD LAND SURVEY OR CENTERLINE CONTROL MONUMENTS LOCATED ON THE I-39 ROAD SURFACE WITHIN THE JOB LIMITS. UNKNOWN MONUMENTS SET BY OTHERS MAY EXIST. IF FOUND, THE R.E. MUST TIE AND REQUEST PLATS AND PLANS PERSONNEL TO GPS ANY MONUMENT SUBJECT TO DAMAGE OR DESTRUCTION FROM THE PAVEMENT PATCHING, AND INFORM THEM TO RESET THESE MONUMENTS UPON JOB COMPLETION. THE R.E. IS TO INFORM THE PLATS AND PLANS SECTION TO SEARCH FOR ADDITIONAL MONUMENTS IF JOB LIMITS ARE EXPANDED DURING CONSTRUCTION. NO MONUMENT RECORDS WILL BE REQUIRED FOR THIS JOB.

MODEL: Default
 FILE NAME: p:\pub\lansroom.dat\illinois.gov\PI\DOT\Documents\DOT_Offices\District_3\Projects\I39668\IC\CD\39ASD\39668\4-ht-details.dgn

USER NAME = NOLASCOCJ	DESIGNED -	REVISED -	
	DRAWN -	REVISED -	
PLOT SCALE = 100.0000' / in.	CHECKED -	REVISED -	
PLOT DATE = 3/26/2019	DATE -	REVISED -	

**STATE OF ILLINOIS
DEPARTMENT OF TRANSPORTATION**

TYPICAL SECTION

SCALE: SHEET 1 OF 1 SHEETS STA. TO STA.

F.A.I. RTE.	SECTION	COUNTY	TOTAL SHEETS	SHEET NO.
39	(50-1,2,3) PP	LASALLE	15	5
CONTRACT NO. 66J84				
ILLINOIS FED. AID PROJECT				

LONGITUDINAL PARTIAL DEPTH PATCHING - SOUTHBOUND							
LOCATION	LENGTH	WIDTH	AREA	LONGITUDINAL PARTIAL DEPTH REMOVAL 2"	BIT MAT (TACK COAT)	LONGITUDINAL PARTIAL DEPTH PATCHING	MIX FOR CRACKS, JOINTS & FLGWYS
MILE POST	FOOT	FOOT	SQ YD	FOOT	POUNDS	TON	TON
PASSING LANE							
40.8	80	2	18	80	8	2.0	
41.5	80	2	18	80	8	2.0	0.01
41.8	120	2	27	120	12	3.0	0.01
42	20	2	4	20	2	0.4	
42.1	120	2	27	120	12	3.0	0.01
42.2	640	2	142	640	64	15.9	0.04
42.3	540	2	120	540	54	13.4	0.04
42.4	300	2	67	300	30	7.5	0.02
42.5	80	2	18	80	8	2.0	0.01
42.6	370	2	82	370	37	9.2	0.02
43	100	2	22	100	10	2.5	
43.1	240	2	53	240	24	5.9	0.02
43.4	40	2	9	40	4	1.0	
46	120	2	27	120	12	3.0	0.01
48.2	90	2	20	90	9	2.2	0.01
SUB-TOTAL				2940	294	73	0.2
DRIVING LANE							
40.6	100	2	22	100	10	2.5	0.01
42.1	120	2	27	120	12	3.0	0.01
43	120	2	27	120	12	3.0	0.01
43.1	370	2	82	370	37	9.2	0.02
43.4	80	2	18	80	8	2.0	0.01
43.5	240	2	53	240	24	5.9	0.02
44.3	240	2	53	240	24	5.9	0.02
44.4	180	2	40	180	18	4.5	0.01
44.5	600	2	133	600	60	14.9	0.04
44.6	550	2	122	550	55	13.7	0.04
44.8	50	2	11	50	5	1.2	
45	210	2	47	210	21	5.3	0.01
45.7	30	2	7	30	3	0.8	
45.8	110	2	24	110	11	2.7	0.01
46	470	2	104	470	47	11.6	0.03
46.1	80	2	18	80	8	2.0	0.01
46.2	120	2	27	120	12	3.0	0.01
48.2	30	2	7	30	3	0.8	
SUB-TOTAL				3700	370	92.0	0.3
TOTAL				6640	664	165.0	0.5

MODEL: Default
 FILE NAME: P:\pub\lanscom.dwg
 PROJECT: I:\projects\10366181\10366181\10366181\10366181.dwg

USER NAME = NOLASCOCJ	DESIGNED -	REVISED -	STATE OF ILLINOIS DEPARTMENT OF TRANSPORTATION	LONGITUDINAL PARTIAL DEPTH PATCHING - SOUTHBOUND SCHEDULE		F.A.I RTE.	SECTION	COUNTY	TOTAL SHEETS	SHEET NO.
	DRAWN -	REVISED -		39	(50-1,2,3) PP	LASALLE	15	6		
PLOT SCALE = 100.0000' / in.	CHECKED -	REVISED -		SCALE:		SHEET 1 OF 2 SHEETS		CONTRACT NO. 66J84		
PLOT DATE = 3/26/2019	DATE -	REVISED -		STA.		TO STA.		ILLINOIS FED. AID PROJECT		

LONGITUDINAL PARTIAL DEPTH PATCHING - NORTHBOUND							
LOCATION	LENGTH	WIDTH	AREA	LONGITUDINAL PARTIAL DEPTH REMOVAL 2"	BIT MAT (TACK COAT) POUNDS	LONGITUDINAL PARTIAL DEPTH PATCHING TON	MIX FOR CRACKS, JOINTS & FLGWYS TON
MILE POST	FOOT	FOOT	SQ YD	FOOT			
PASSING LANE							
41.9	18	2	4	18	2	0.4	
45.2	130	2	29	130	13	3.2	0.01
45.6	140	2	31	140	14	3.5	0.01
45.7	80	2	18	80	8	2	0.01
46.1	40	2	9	40	4	1	
47.1	90	2	20	90	9	2.2	0.01
47.9	80	2	18	80	8	2	0.01
SUB-TOTAL				578	58	14.3	0.1
DRIVING LANE							
40.3	60	2	13	60	6	1.5	
40.5	75	2	17	75	8	1.9	0.01
40.8	135	2	30	135	14	3.4	0.01
41.2	70	2	16	70	7	1.8	
42	120	2	27	120	12	3	0.01
42.2	80	2	18	80	8	2	0.01
42.3	50	2	11	50	5	1.2	
42.5	135	2	30	135	14	3.4	0.01
45.1	135	2	30	135	14	3.4	0.01
45.9	150	2	33	150	15	3.7	0.01
46.2	80	2	18	80	8	2	0.01
46.3	50	2	11	50	5	1.2	
46.4	110	2	24	110	11	2.7	0.01
46.5	250	2	56	250	25	6.3	0.02
46.7	90	2	20	90	9	2.2	0.01
46.8	55	2	12	55	5	1.3	
46.9	30	2	7	30	3	0.8	
47	410	2	91	410	41	10.2	0.03
47.1	120	2	27	120	12	3	0.01
47.3	160	2	36	160	16	4	0.01
47.3	200	2	44	200	20	4.9	0.01
47.4	160	2	36	160	16	4	0.01
47.4	120	2	27	120	12	3	0.01
47.7	270	2	60	270	27	6.7	0.02
47.8	70	2	16	70	7	1.8	
48.0	210	2	47	210	21	5.3	0.01
48.4	205	2	46	205	21	5.2	0.01
48.5	230	2	51	230	23	5.7	0.02
SUB-TOTAL				3830	385	95.6	0.3
TOTAL				4408	443	109.9	0.4

MODEL: Default
 FILE NAME: p:\pub\lanscom.dwt\illinois.gov\PIWDOT\Documents\DOT_Offices\District_3\Projects\ID366184\ICD000003\ID366184-rt-detail.dgn

USER NAME = NOLASCOCJ	DESIGNED -	REVISED -
	DRAWN -	REVISED -
PLOT SCALE = 100.0000' / in.	CHECKED -	REVISED -
PLOT DATE = 3/25/2019	DATE -	REVISED -

**STATE OF ILLINOIS
DEPARTMENT OF TRANSPORTATION**

LONGITUDINAL PARTIAL DEPTH PATCHING - NORTHBOUND SCHEDULE			
SCALE:	SHEET 2	OF 2 SHEETS	STA. TO STA.

F.A.I. RTE.	SECTION	COUNTY	TOTAL SHEETS	SHEET NO.
39	(50-1,2,3) PP	LASALLE	15	7
			CONTRACT NO. 66J84	
		ILLINOIS	FED. AID PROJECT	

CRACK ROUTING AND SEALING SCHEDULE				
LOCATION	LONGITUDINAL CRACK ROUTING (PAVEMENT)	TRANSVERSE CRACK ROUTING (PAVEMENT)	LONGITUDINAL CRACK FILLING	TRANSVERSE CRACK FILLING
MP TO MP	FOOT	FOOT	POUND	POUND
SOUTHBOUND				
40.0 TO 41.0	735	34632	257	12121
41.0 TO 42.0	1360	48288	476	16901
42.0 TO 43.0	940	37368	329	13079
43.0 TO 44.0	60	38616	21	13516
44.0 TO 45.0	678	26064	237	9122
45.0 TO 46.0	3290	18768	1152	6569
46.0 TO 47.0	1250	17064	438	5972
47.0 TO 48.0	620	13488	217	4721
48.0 TO 48.4	310	4704	109	1646
SUB-TOTAL	9243	238992	3236	83647
NORTHBOUND				
40.0 TO 41.0	425	10728	149	3755
41.0 TO 42.0	90	13392	32	4687
42.0 TO 43.0	525	14904	184	5216
43.0 TO 44.0	10	13680	4	4788
44.0 TO 45.0	230	18720	81	6552
45.0 TO 46.0	470	19152	165	6703
46.0 TO 47.0	930	19512	326	6829
47.0 TO 48.0	1720	18792	602	6577
48.0 TO 48.4	90	8640	32	3024
SUB-TOTAL	4490	137520	1575	48132
TOTAL	13733	376512	4811	131779

PAVEMENT MARKING			
LOCATION	LENGTH	POLYUREA PVMT MRK TYPE I	
		LINE 4" WHITE	LINE 6" WHITE
MP TO MP	FOOT	FOOT	FOOT
SOUTHBOUND			
40.0 TO 41.0	45	45	60
41.0 TO 42.0	30	30	50
42.0 TO 43.0	65	65	70
43.0 TO 44.0	54	54	80
44.0 TO 45.0	18	18	30
45.0 TO 46.0	61	61	70
46.0 TO 47.0	142	142	200
47.0 TO 48.0	163	163	180
48.0 TO 48.5	38	38	60
SUB-TOTAL	616	616	800
NORTHBOUND			
40.0 TO 41.0	36	36	60
41.0 TO 42.0	38	38	60
42.0 TO 43.0	170	170	170
43.0 TO 44.0	74	74	110
44.0 TO 45.0	68	68	80
45.0 TO 46.0	71	71	70
46.0 TO 47.0	82	82	110
47.0 TO 48.0	77	77	110
48.0 TO 48.5	50	50	60
SUB-TOTAL	666	666	830
TOTAL	1282	1282	1630

LOCATION	RAISED REFLECTIVE MARKER	RAISED REFLECTIVE MARKER REMOVAL
MP TO MP	EACH	EACH
SOUTHBOUND		
40.0 TO 48.5	28	28
NORTHBOUND		
40.0 TO 48.5	17	17
TOTAL	45	45

MODEL: Default
 FILE NAME: P:\pub\lanscom.dwg
 PROJECT: I:\projects\10366181\10366181\10366181.dwg
 OFFICE: D:\dot\Documents\DOT - Office\10366181.dwg

USER NAME = NOLASCOCJ	DESIGNED -	REVISED -
	DRAWN -	REVISED -
PLOT SCALE = 100.0000' / in.	CHECKED -	REVISED -
PLOT DATE = 3/26/2019	DATE -	REVISED -

STATE OF ILLINOIS
DEPARTMENT OF TRANSPORTATION

CRACK AND SEALING & PAVEMENT MARKING
SCHEDULES

SCALE: SHEET 1 OF 1 SHEETS STA. TO STA.

F.A.I. RTE.	SECTION	COUNTY	TOTAL SHEETS	SHEET NO.
39	(50-1,2,3) PP	LASALLE	15	8
CONTRACT NO. 66J84			ILLINOIS FED. AID PROJECT	

PATCHING SCHEDULE - NORTHBOUND

DRIVING LANE									PASSING LANE								
LOCATION	LENGTH	WIDTH	CLASS A PATCHES			PATCH REINF	SAW CUTS	TIE BARS 3/4"	LOCATION	LENGTH	WIDTH	CLASS A PATCHES			PATCH REINF	SAW CUTS	TIE BARS 3/4"
			TYPE II 10"	TYPE III 10"	TYPE IV 10"							TYPE II 10"	TYPE III 10"	TYPE IV 10"			
MILE POST	FOOT	FOOT	SQ YD	SQ YD	SQ YD	SQ YD	FOOT	EACH	MILE POST	FOOT	FOOT	SQ YD	SQ YD	SQ YD	SQ YD	FOOT	EACH
40.3	6	12	8			8	36	46	40.6	6	12	8			8	36	46
40.5	6	12	8			8	36	46	40.7	6	12	8			8	36	46
40.5	6	12	8			8	36	46	41	6	12	8			8	36	46
40.6	6	12	8			8	36	46	41.7	6	12	8			8	36	46
41	6	12	8			8	36	46	42.5	6	12	8			8	36	46
41.1	6	12	8			8	36	46	42.6	6	12	8			8	36	46
41.4	6	12	8			8	36	46	42.6	6	12	8			8	36	46
41.8	8	12	11			11	40	46	42.8	6	12	8			8	36	46
42.2	8	12	11			11	40	46	43.2	6	12	8			8	36	46
42.2	18	12		24		24	60	46	43.3	6	12	8			8	36	46
42.2	12	12		16		16	48	46	43.5	6	12	8			8	36	46
42.3	10	12	13			13	44	46	43.5	6	12	8			8	36	46
42.3	10	12	13			13	44	46	43.7	6	12	8			8	36	46
42.3	6	12	8			8	36	46	44.3	6	12	8			8	36	46
42.4	25	12			33	33	74	54	44.6	12	12		16		16	48	46
42.4	15	12		20		20	54	46	44.9	6	12	8			8	36	46
42.4	10	12	13			13	44	46	45	6	12	8			8	36	46
42.4	6	12	8			8	36	46	45.4	12	12		16		16	48	46
42.5	6	12	8			8	36	46	45.7	15	12		20		20	54	46
42.6	10	12	13			13	44	46	45.7	20	12			27	27	64	46
42.6	10	12	13			13	44	46	46.1	6	12	8			8	36	46
43	10	12	13			13	44	46	46.2	6	12	8			8	36	46
43	10	12	13			13	44	46	46.4	6	12	8			8	36	46
43.4	6	12	8			8	36	46	46.5	6	12	8			8	36	46
43.4	6	12	8			8	36	46	46.7	6	12	8			8	36	46
43.6	6	12	8			8	36	46	46.9	6	12	8			8	36	46
43.7	6	12	8			8	36	46	46.9	6	12	8			8	36	46
44.4	10	12	13			13	44	46	47.1	6	12	8			8	36	46
44.5	10	12	13			13	44	46	47.7	6	12	8			8	36	46
44.5	10	12	13			13	44	46	47.8	6	12	8			8	36	46
44.5	8	12	11			11	40	46	48.1	10	12	13			13	44	46
44.7	6	12	8			8	36	46	48.2	10	12	13			13	44	46
45	6	12	8			8	36	46									
45.2	6	12	8			8	36	46	SUBTOTAL			234	52	27	313	1238	1472
45.5	6	12	8			8	36	46									
46	6	12	8			8	36	46									
46	8	12	11			11	40	46									
46.2	6	12	8			8	36	46									
46.5	20	12			27	27	64	46									
47	6	12	8			8	36	46									
47.1	6	12	8			8	36	46									
47.2	15	12		20		20	54	46									
47.3	6	12	8			8	36	46									
47.5	6	12	8			8	36	46									
47.5	8	12	11			11	40	46									
47.6	6	12	8			8	36	46									
47.9	6	12	8			8	36	46									
48	6	12	8			8	36	46									
48.1	12	12		16		16	48	46									
48.3	6	12	8			8	36	46									
48.5	6	12	8			8	36	46									
SUBTOTAL			417	96	60	573	2086	2354									

MODEL: Default
FILE NAME: P:\pub\lanscom.dta\illinois.gov\PROJECTS\DOT\Office\Draft\3\Projects\0366181\CAD\0366181.dgn

USER NAME = NOLASCOCJ	DESIGNED -	REVISED -	STATE OF ILLINOIS DEPARTMENT OF TRANSPORTATION	PATCHING CLASS A NORTHBOUND SCHEDULE				F.A.I. RTE.	SECTION	COUNTY	TOTAL SHEETS	SHEET NO.	
PLOT SCALE = 100.0000' / in.	DRAWN -	REVISED -		SCALE:	SHEET 1	OF 2	SHEETS	STA.	TO STA.	(50-1,2,3)PP	LASALLE	15	9
PLOT DATE = 3/26/2019	CHECKED -	REVISED -											
	DATE -	REVISED -											

ILLINOIS FED. AID PROJECT CONTRACT NO. 66J84

PATCHING SCHEDULE - SOUTHBOUND

DRIVING LANE									PASSING LANE							
LOCATION	LENGTH	WIDTH	CLASS A PATCHES			PATCH REINF	SAW CUTS	TIE BARS 3/4"	LOCATION	LENGTH	WIDTH	CLASS A PATCHES		PATCH REINF	SAW CUTS	TIE BARS 3/4"
			TYPE II 10"	TYPE III 10"	TYPE IV 10"							TYPE II 10"	TYPE IV 10"			
MILE POST	FOOT	FOOT	SQ YD	SQ YD	SQ YD	SQ YD	FOOT	EACH	MILE POST	FOOT	FOOT	SQ YD	SQ YD	SQ YD	FOOT	EACH
40.6	15	12		20		20	54	46	40.6	6	12	8		8	36	46
40.6	6	12	8			8	36	46	40.7	6	12	8		8	36	46
41.1	6	12	8			8	36	46	40.8	6	12	8		8	36	46
41.2	6	12	8			8	36	46	40.8	6	12	8		8	36	46
41.6	6	12	8			8	36	46	41	6	12	8		8	36	46
42.0	10	12	13			13	44	46	41.7	6	12	8		8	36	46
42.1	6	12	8			8	36	46	42.7	6	12	8		8	36	46
42.3	6	12	8			8	36	46	42.8	6	12	8		8	36	46
42.4	25	12			33	33	74	54	43.3	6	12	8		8	36	46
42.6	6	12	8			8	36	46	43.5	6	12	8		8	36	46
43	8	12	11			11	40	46	43.7	6	12	8		8	36	46
43.5	6	12	8			8	36	46	44.8	6	12	8		8	36	46
43.5	6	12	8			8	36	46	45	6	12	8		8	36	46
43.6	6	12	8			8	36	46	45.4	6	12	8		8	36	46
43.7	10	12	13			13	44	46	45.7	6	12	8		8	36	46
44.0	6	12	8			8	36	46	45.7	25	12		33	33	74	54
44.7	6	12	8			8	36	46	46.3	8	12	11		11	40	46
45.1	6	12	8			8	36	46	46.4	6	12	8		8	36	46
45.5	6	12	8			8	36	46	46.6	6	12	8		8	36	46
45.9	6	12	8			8	36	46	46.8	6	12	8		8	36	46
46	12	12		16		16	48	46	46.8	6	12	8		8	36	46
46.3	6	12	8			8	36	46	46.8	6	12	8		8	36	46
46.4	6	12	8			8	36	46	46.8	6	12	8		8	36	46
46.4	6	12	8			8	36	46	46.9	6	12	8		8	36	46
46.5	6	12	8			8	36	46	46.9	6	12	8		8	36	46
46.5	12	12		16		16	48	46	46.9	6	12	8		8	36	46
46.6	10	12	13			13	44	46	47.1	6	12	8		8	36	46
46.6	8	12	11			11	40	46	47.1	6	12	8		8	36	46
46.7	6	12	8			8	36	46	47.4	6	12	8		8	36	46
46.9	8	12	11			11	40	46	47.5	6	12	8		8	36	46
47.0	6	12	8			8	36	46	47.7	6	12	8		8	36	46
47.0	8	12	11			11	40	46	48	6	12	8		8	36	46
47.1	15	12		20		20	54	46	48	6	12	8		8	36	46
47.1	8	12	11			11	40	46	SUB-TOTALS			259	33	292	1230	1526
47.1	15	12		20		20	54	46								
47.1	20	12			27	27	64	46								
47.2	6	12	8			8	36	46								
47.2	6	12	8			8	36	46								
47.3	15	12		20		20	54	46								
47.3	10	12	13			13	44	46								
47.3	6	12	8			8	36	46								
47.4	6	12	8			8	36	46								
47.9	12	12		16		16	48	46								
48.0	6	12	8			8	36	46								
48.6	8	12	11			11	40	46								
48.6	6	12	8			8	36	46								
48.6	6	12	8			8	36	46								
SUBTOTALS			342	128	60	530	1922	2170								

MODEL: Default
 FILE NAME: P:\pub\lanscom.dta\illinois.gov\PWDOT\Documents\DOT_Offices\District_3\Projects\ID366\84\CAD\Drawings\ID366\84-ht-detail.dgn

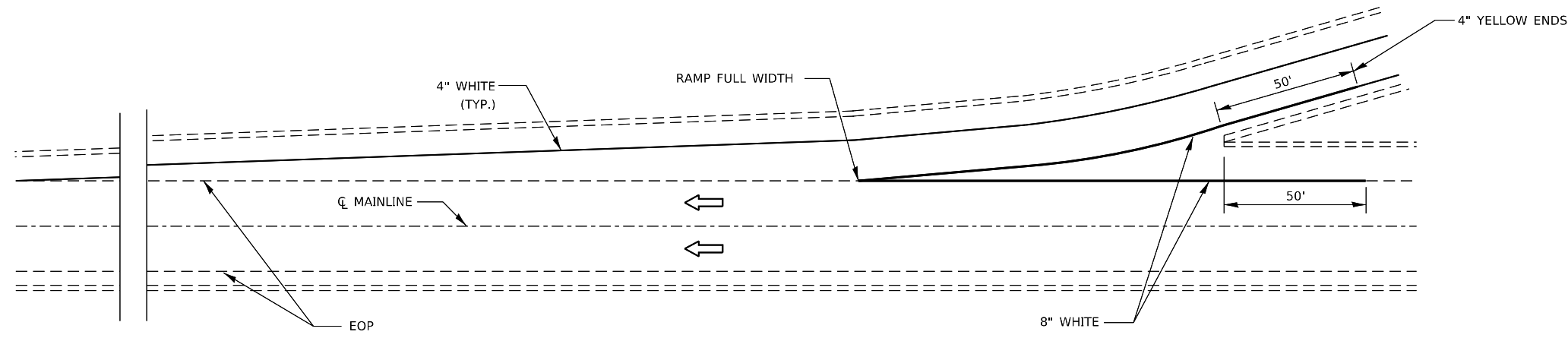
USER NAME = NOLASCOCJ	DESIGNED -	REVISED -
	DRAWN -	REVISED -
PLOT SCALE = 100.0000' / in.	CHECKED -	REVISED -
PLOT DATE = 3/26/2019	DATE -	REVISED -

**STATE OF ILLINOIS
DEPARTMENT OF TRANSPORTATION**

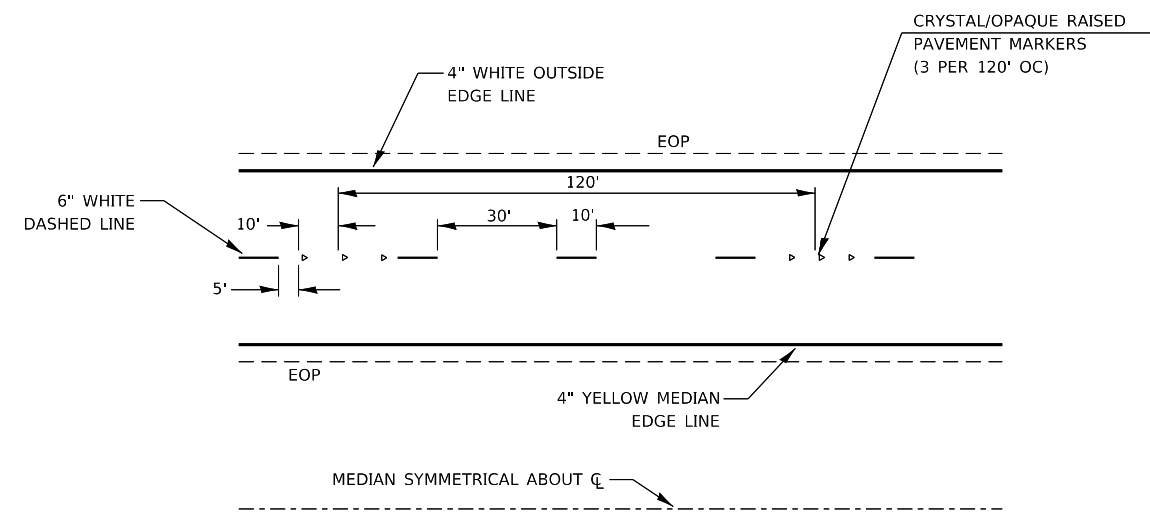
**PATCHING CLASS A
SOUTHBOUND SCHEDULE**

SCALE: SHEET 1 OF 2 SHEETS STA. TO STA.

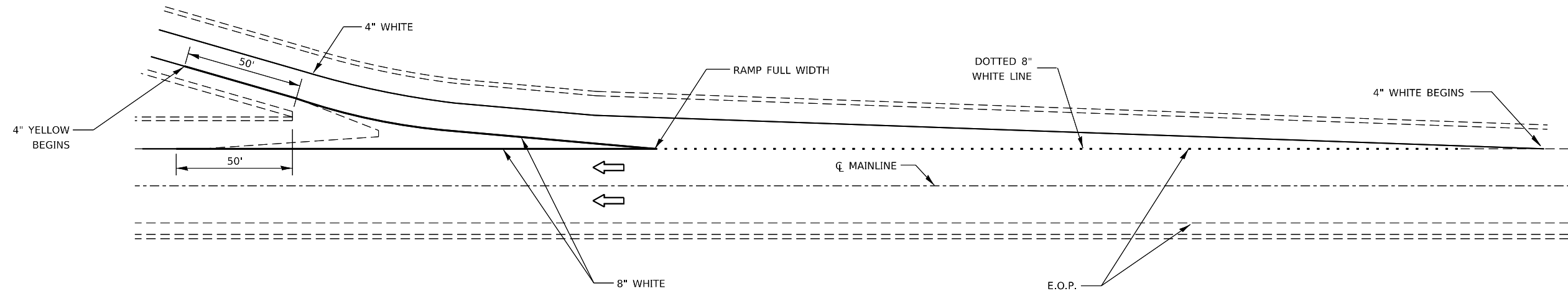
F.A.I. RTE.	SECTION	COUNTY	TOTAL SHEETS	SHEET NO.
39	(50-1,2,3)PP	LASALLE	15	10
CONTRACT NO. 66J84				
ILLINOIS FED. AID PROJECT				



TYPICAL PAVEMENT MARKING FOR ENTRANCE RAMP TERMINALS



TYPICAL PAVEMENT MARKINGS



TYPICAL PAVEMENT MARKINGS FOR EXIT RAMP TERMINALS

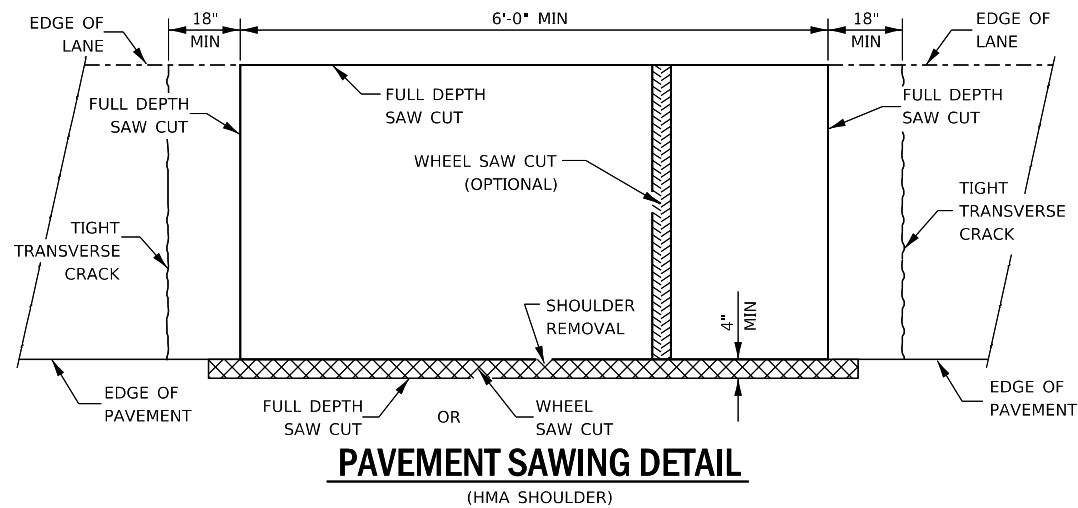
MODEL: Default
 FILE NAME: p:\pub\lanscom.dat\illinois.gov\PIWDOT\Documents\DOT_Offices\District 3\Projects\0366818\ICAD\0366818-ht-details.dgn

USER NAME = NOLASCOCJ	DESIGNED -	REVISED -
	DRAWN -	REVISED -
PLOT SCALE = 100.0000' / in.	CHECKED -	REVISED -
PLOT DATE = 3/25/2019	DATE -	REVISED -

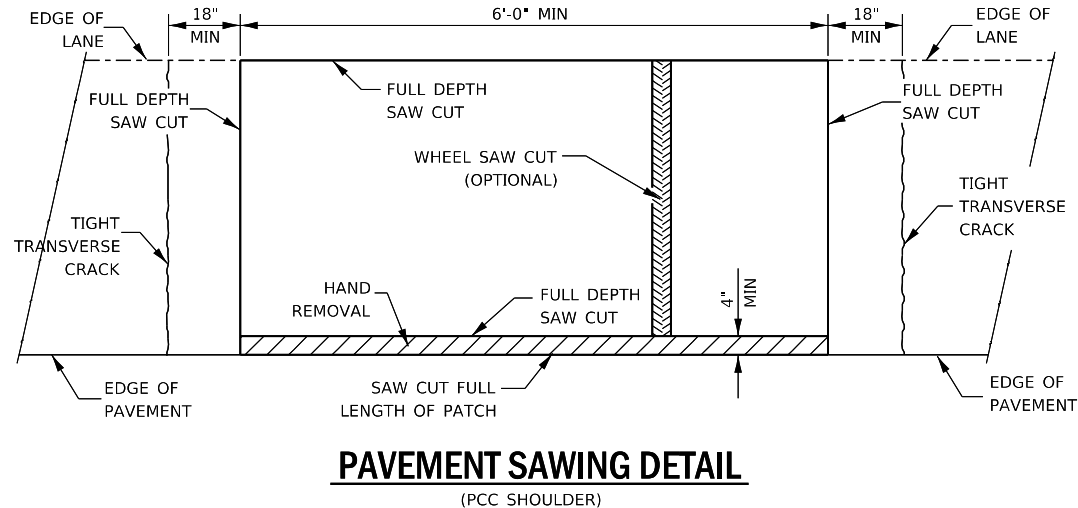
STATE OF ILLINOIS
DEPARTMENT OF TRANSPORTATION

PAVEMENT MARKING DETAILS			
SCALE:	SHEET 1	OF 1	SHEETS
	STA.		TO STA.

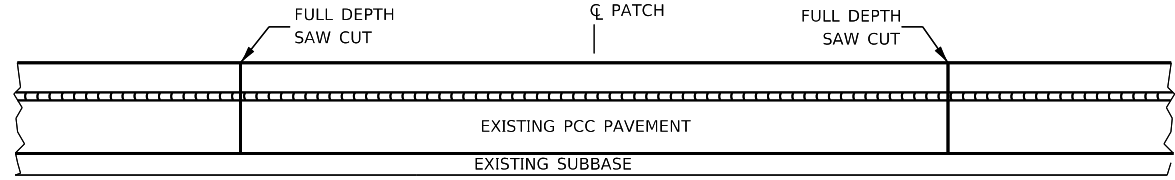
F.A.I. RTE.	SECTION	COUNTY	TOTAL SHEETS	SHEET NO.
39	(50-1,2,3) PP	LASALLE	15	11
CONTRACT NO. 66J84			ILLINOIS FED. AID PROJECT	



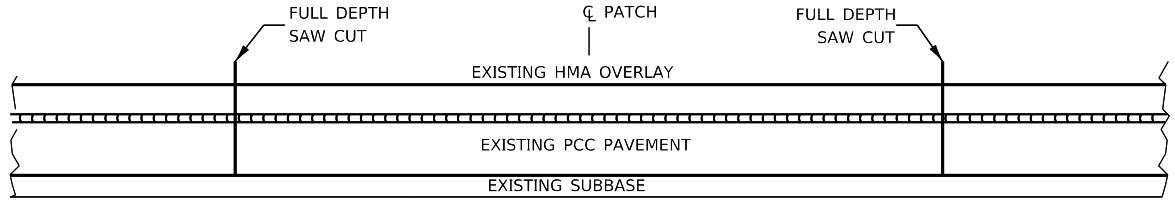
PAVEMENT SAWING DETAIL
(HMA SHOULDER)



PAVEMENT SAWING DETAIL
(PCC SHOULDER)

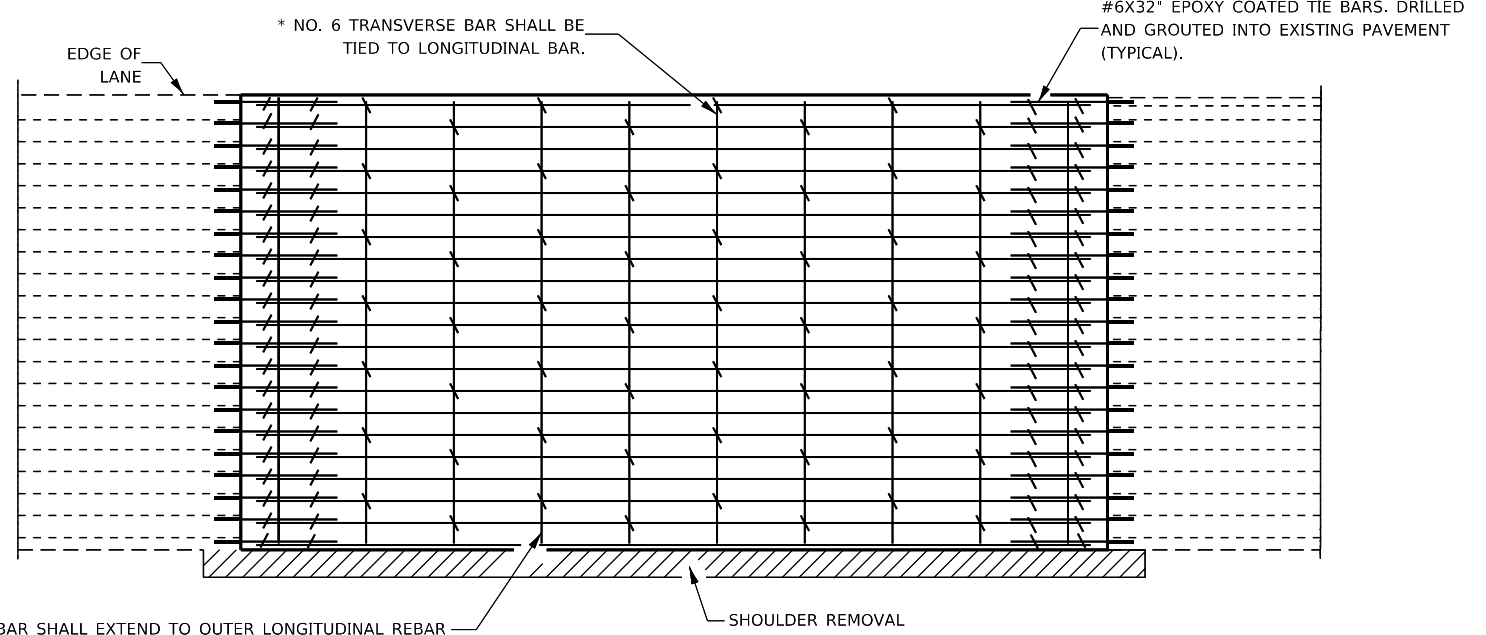


EXISTING PAVEMENT WITHOUT HMA SURFACE



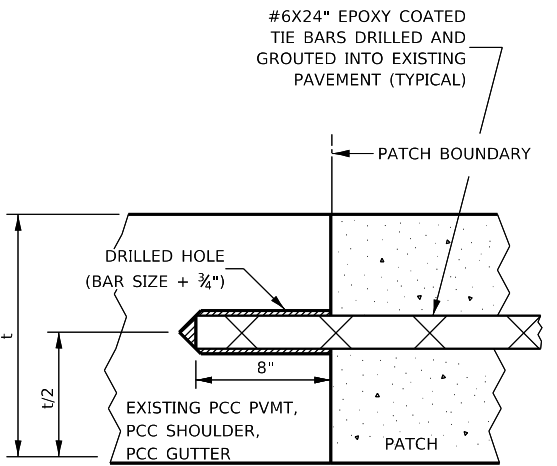
EXISTING PAVEMENT WITH HMA SURFACE

PAVEMENT SAWING DETAIL FOR CLASS A PATCHING
(CRC PAVEMENT)



PAVEMENT REINFORCEMENT DETAIL

TRANSVERSE REBAR SHALL EXTEND TO OUTER LONGITUDINAL REBAR WHILE PROVIDING A MINIMUM 3" CLEARANCE FROM EXISTING PAVEMENT EDGE



LONGITUDINAL CONSTRUCTION JOINT

PATCHES MORE THAN 20' IN LENGTH SHALL BE TIED TO ADJACENT PAVEMENT, PCC SHOULDERS OR PCC CURB AND GUTTER WITH #6X24" EPOXY COATED TIE BARS AT 36" CENTERS.

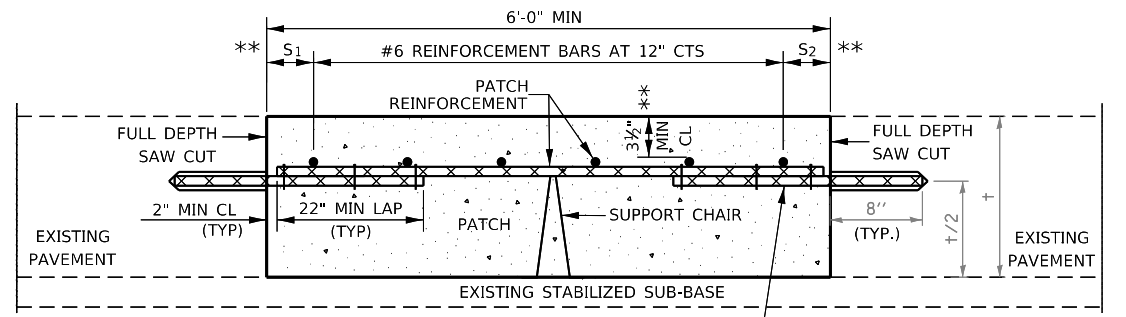
NOTES:

EXISTING LONGITUDINAL REINFORCEMENT SPACING; $\pm 6"$.

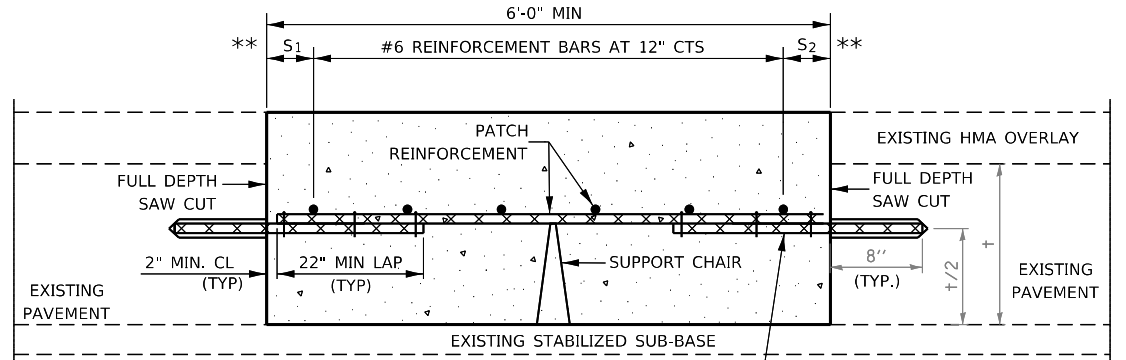
SPACING OF NEW LONGITUDINAL REINFORCEMENT AND NEW LONGITUDINAL TIE BARS SHALL MATCH SPACING OF EXISTING REINFORCEMENT AND SHALL BE TIED TOGETHER WITH A MINIMUM OF TWO TIES PER BAR.

* EVERY THIRD INTERSECTION MUST BE TIED. WHEN THE MINIMUM CLEARANCE CANNOT BE OBTAINED WITH THE TRANSVERSE REBAR ON TOP, THEN THE TRANSVERSE REBAR SHALL BE TIED TO THE BOTTOM OF THE LONGITUDINAL REBAR.

** VARIABLE: WHERE S_1 AND S_2 ARE $2\frac{1}{2}"$ MIN. AND 12" MAX.



WITHOUT HMA OVERLAY



WITH HMA OVERLAY

PATCHING DETAIL FOR CLASS A PATCHING
(CRC PAVEMENT)

MODEL: Default
FILE NAME: pavelpanroom.dat\illinois.gov\PIWDOT\Documents\DOT_Offices\District_3\Projects\3136618\ICAD\31366184-eh-drawls.dgn

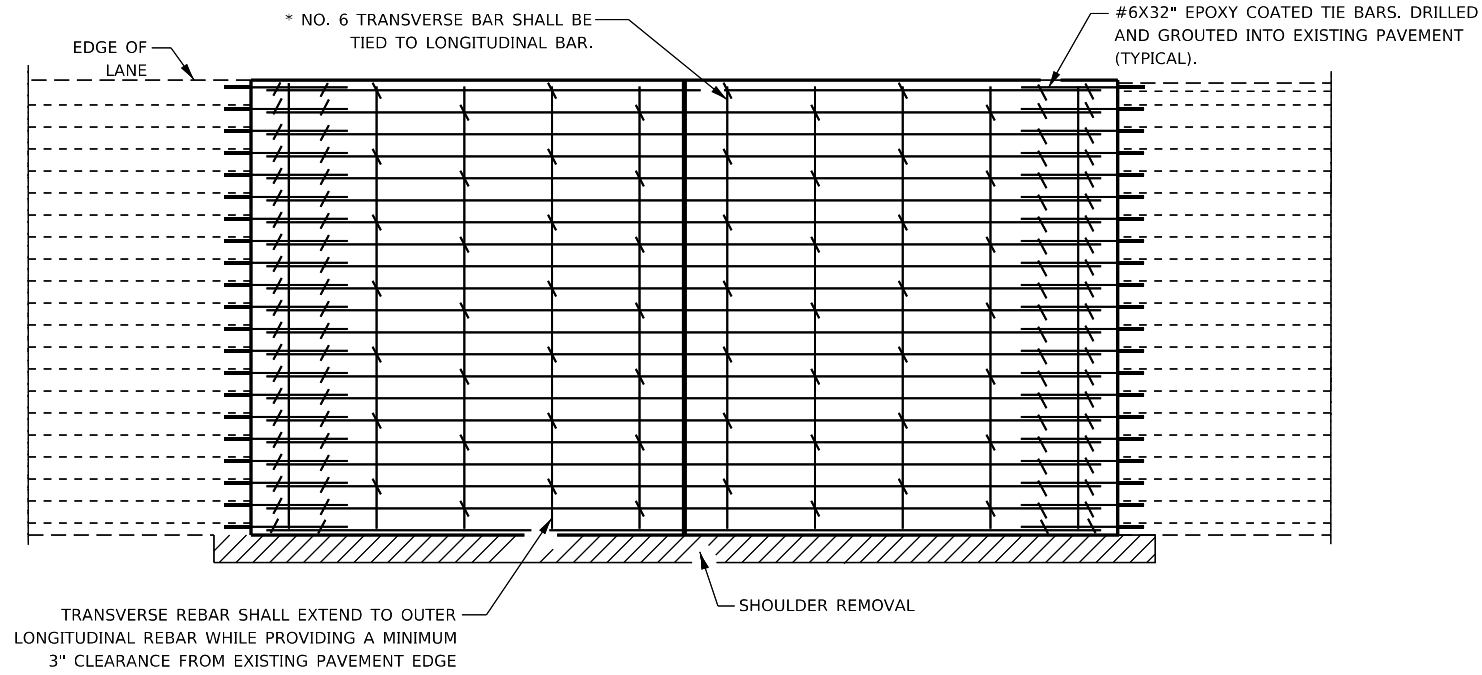
USER NAME = NOLASCOCJ	DESIGNED -	REVISED -
	DRAWN -	REVISED -
PLOT SCALE = 100.0000' / in.	CHECKED -	REVISED -
PLOT DATE = 3/25/2019	DATE -	REVISED -

STATE OF ILLINOIS
DEPARTMENT OF TRANSPORTATION

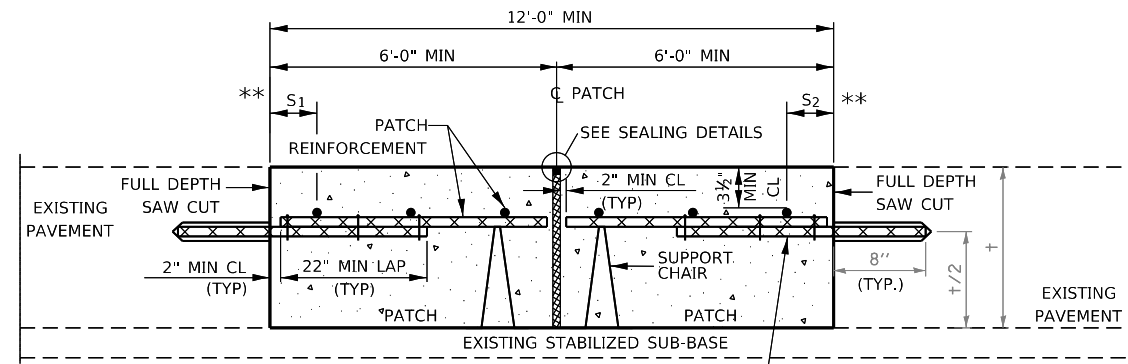
CLASS A PATCHING DETAILS

SCALE: SHEET 1 OF 2 SHEETS STA. TO STA.

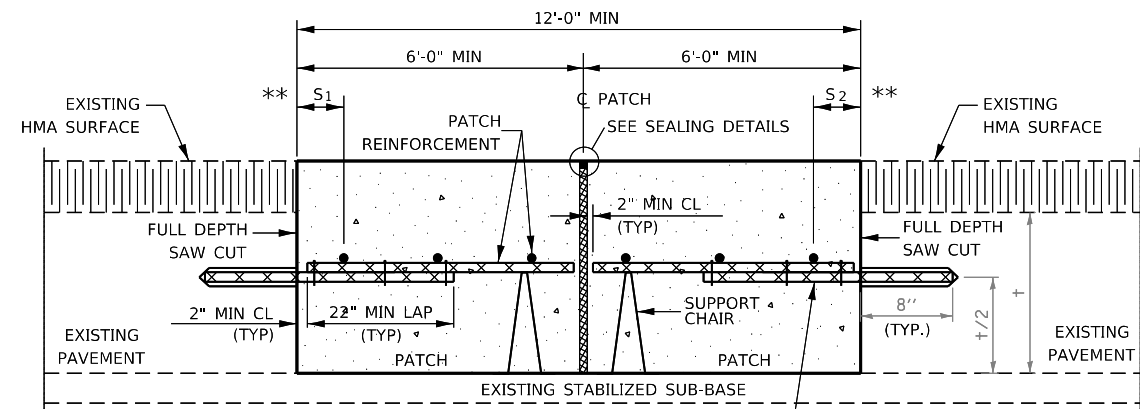
F.A.J RTE.	SECTION	COUNTY	TOTAL SHEETS	SHEET NO.
39	(50-1,2,3) PP	LASALLE	15	12
CONTRACT NO. 66J84				
ILLINOIS FED. AID PROJECT				



PAVEMENT REINFORCEMENT DETAIL

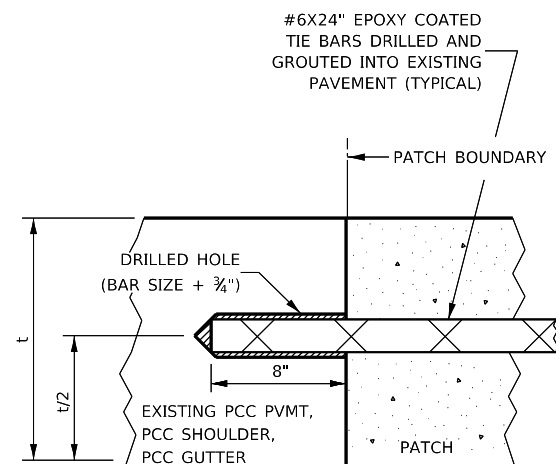


WITHOUT HMA OVERLAY



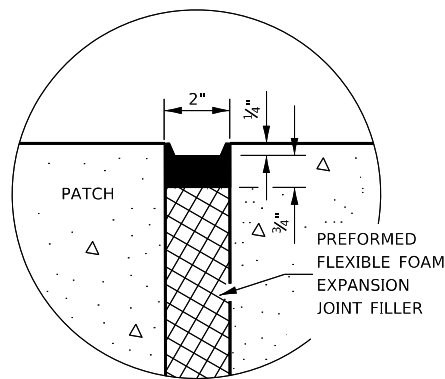
WITH HMA OVERLAY

CLASS A PATCH WITH EXPANSION JOINT

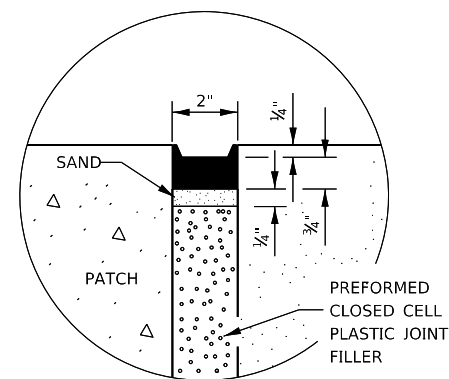


LONGITUDINAL CONSTRUCTION JOINT

PATCHES MORE THAN 20' IN LENGTH SHALL BE TIED TO ADJACENT PAVEMENT, PCC SHOULDERS OR PCC CURB AND GUTTER WITH #6x24" EPOXY COATED TIE BARS AT 36" CENTERS.



SEALING DETAIL



SEALING DETAIL

NOTES:

EXISTING LONGITUDINAL REINFORCEMENT SPACING; $\pm 6"$.

SPACING OF NEW LONGITUDINAL REINFORCEMENT AND NEW LONGITUDINAL TIE BARS SHALL MATCH SPACING OF EXISTING REINFORCEMENT AND SHALL BE TIED TOGETHER WITH A MINIMUM OF TWO TIES PER BAR.

* EVERY THIRD INTERSECTION MUST BE TIED. WHEN THE MINIMUM CLEARANCE CANNOT BE OBTAINED WITH THE TRANSVERSE REBAR ON TOP, THEN THE TRANSVERSE REBAR SHALL BE TIED TO THE BOTTOM OF THE LONGITUDINAL REBAR.

** VARIABLE: WHERE S_1 AND S_2 ARE $2\frac{1}{2}"$ MIN. AND $12"$ MAX.

MODEL: Default
FILE NAME: p:\pub\aroom.d\at\links.gov\PWD\DOT\Documents\DOT_Offices\Ill\dtct_3\projects\036688\IC\000003\036688-ht-detail.dgn

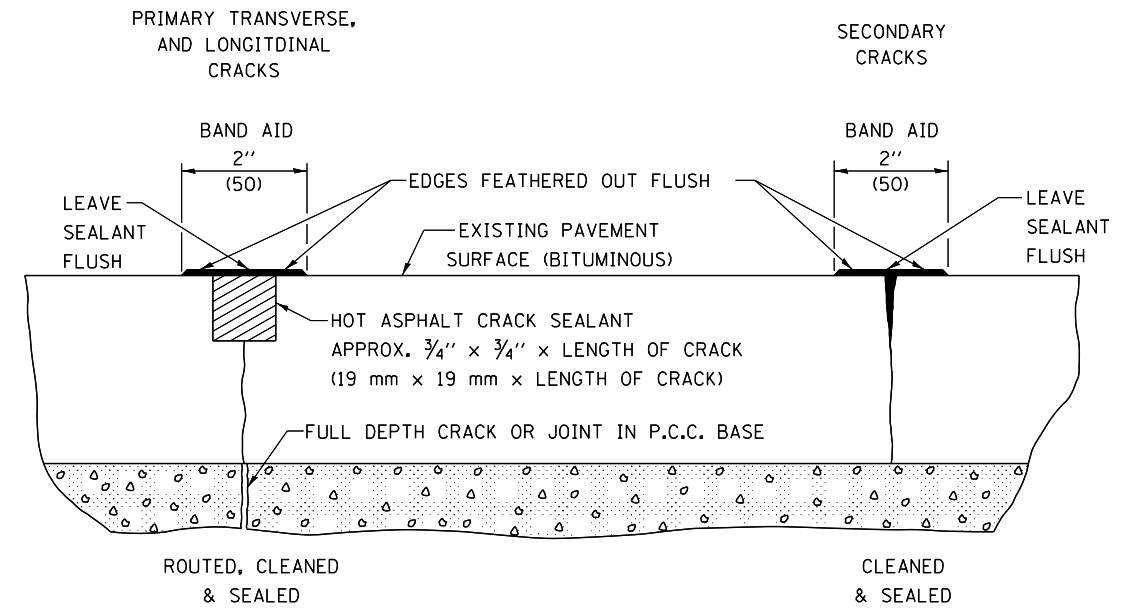
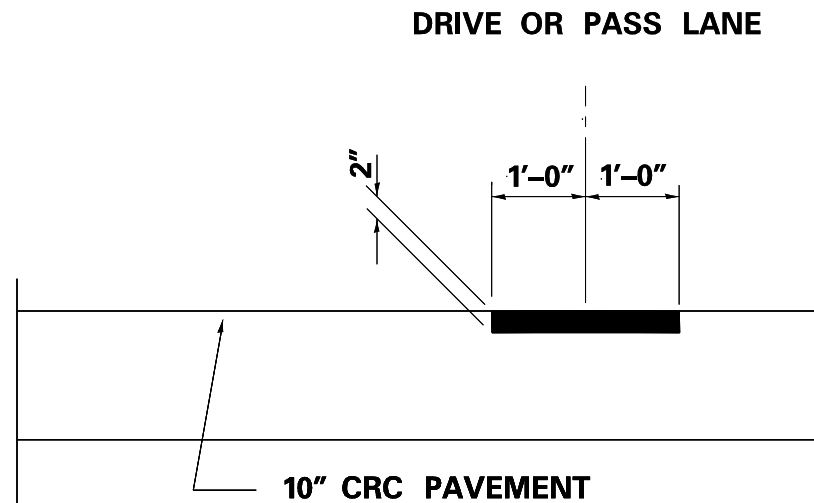
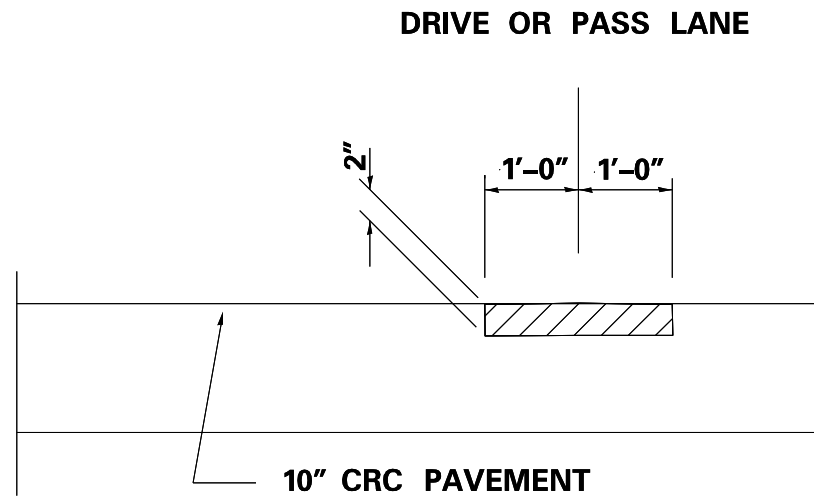
USER NAME = NOLASCOCJ	DESIGNED -	REVISED -
PLOT SCALE = 100.0000' / in.	DRAWN -	REVISED -
PLOT DATE = 3/25/2019	CHECKED -	REVISED -
	DATE -	REVISED -

**STATE OF ILLINOIS
DEPARTMENT OF TRANSPORTATION**

CLASS A PATCHING DETAILS

SCALE: SHEET 2 OF 2 SHEETS STA. TO STA.

F.A.I RTE.	SECTION	COUNTY	TOTAL SHEETS	SHEET NO.
39	(50-1,2,3) PP	LASALLE	15	13
CONTRACT NO. 66J84				
ILLINOIS FED. AID PROJECT				



CRACK SEALING DETAIL

 **LONGITUDINAL PARTIAL DEPTH REMOVAL**



*** SEE SCHEDULE FOR LOCATIONS**

MODEL: Default
FILE NAME: P:\pub\lanscom.dat\illinois.gov\PI\DOT\Documents\DOT_Offices\Dist\ctc_3\projects\036618\IC\036618-ctc-details.dgn

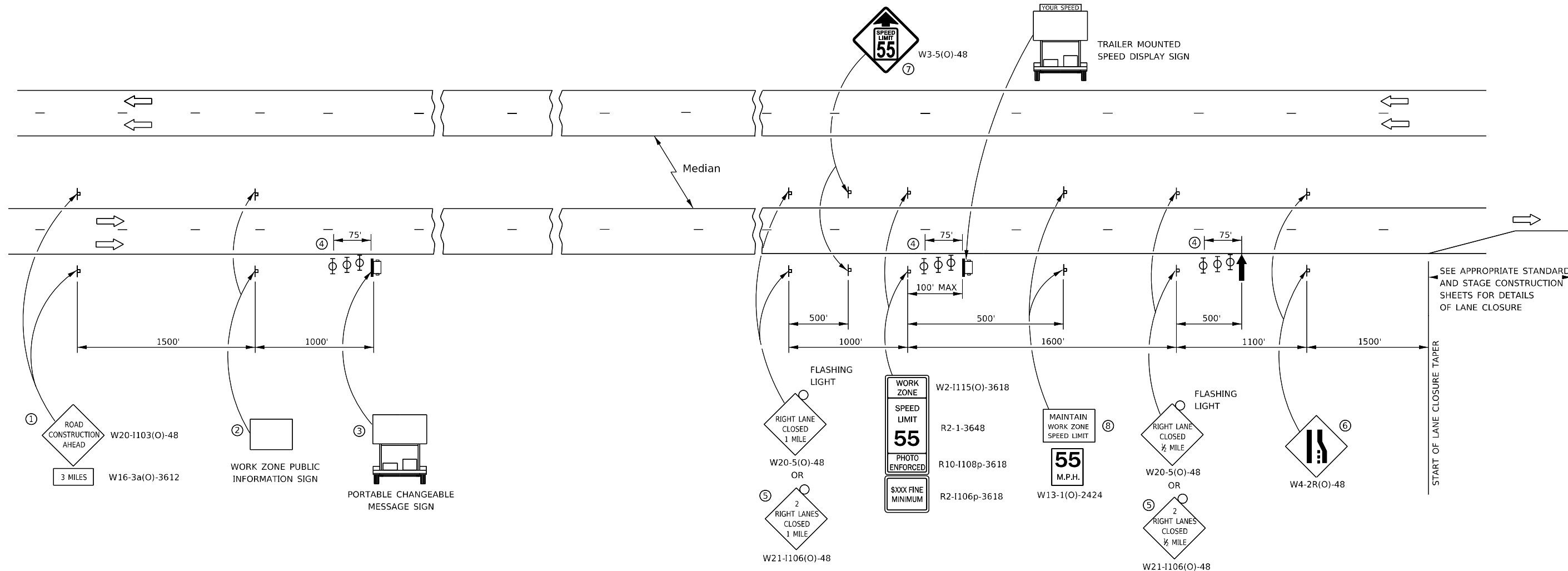
USER NAME = NOLASCOCJ	DESIGNED -	REVISED -
	DRAWN -	REVISED -
PLOT SCALE = 100.0000' / in.	CHECKED -	REVISED -
PLOT DATE = 3/25/2019	DATE -	REVISED -

**STATE OF ILLINOIS
DEPARTMENT OF TRANSPORTATION**

**LONGITUDINAL PARTIAL DEPTH PATCHING
& CRACK SEALING DETAILS**

SCALE: SHEET 1 OF 1 SHEETS STA. TO STA.

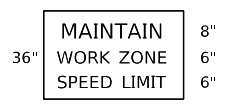
F.A.I. RTE.	SECTION	COUNTY	TOTAL SHEETS	SHEET NO.
39	(50-1,2,3)PP	LASALLE	15	14
CONTRACT NO. 66J84			ILLINOIS FED. AID PROJECT	



SEE APPROPRIATE STANDARD AND STAGE CONSTRUCTION SHEETS FOR DETAILS OF LANE CLOSURE

- ① THE ROAD CONSTRUCTION AHEAD SIGN SHALL BE LOCATED 3 MILES IN ADVANCE OF THE PROJECT LIMITS.
- ② THE MESSAGE AND SIZE OF THE WORK ZONE PUBLIC INFORMATION SIGN SHALL BE AS SPECIFIED BY THE DEPARTMENT.
- ③ TO BE PLACED IN THE MEDIAN WHEN FEASIBLE. THE MESSAGE BOARD SHALL BE USED TO DISPLAY STATUS OF LANES WITHIN THE PROJECT. THE PRIMARY MESSAGES SHALL BE:
"RIGHT LANE CLOSED" / " x MILES AHEAD"
"LEFT LANE CLOSED" / " x MILES AHEAD"
"ALL LANES OPEN"
- ④ THREE, TYPE II BARRICADES, DRUMS, OR VERTICAL BARRICADES AT 25' CENTERS.
- ⑤ THIS SIGN SHALL BE USED WHEN 2 LANES ARE CLOSED.
- ⑥ WHEN THE LEFT LANE IS CLOSED, SWITCH THE SIGN.
- ⑦ THIS SIGN SHALL ONLY BE USED IF THE EXISTING SPEED LIMIT IS GREATER THAN 65 MPH.

⑧ 48"x36" FLUORESCENT ORANGE SIGN WITH BLACK LETTERS.



- ↑ ARROW BOARD
- ☐ PORTABLE CHANGEABLE MESSAGE SIGN
- ⊥ SIGN
- ⊕ TYPE II BARRICADE, DRUM, OR VERTICAL BARRICADE WITH MONODIRECTIONAL FLASHING LIGHT

GENERAL NOTE:

THIS STANDARD IS USED WHERE AT ANY TIME A LANE IS CLOSED ON A FREEWAY/EXPRESSWAY.

WHEN THE LEFT LANE IS CLOSED, LEFT LANE CLOSED SIGNS SHALL BE SUBSTITUTED FOR THE RIGHT LANE CLOSED SIGNS.

THE FIRST TWO SIGNS AND THE MESSAGE BOARD ARE STATIONARY. THE OTHER SIGNS AND ARROWBOARDS SHALL BE MOVED AS NECESSARY TO MAINTAIN THE REQUIRED DISTANCE FROM THE START OF THE LANE CLOSURE TAPER(S).

SEE SPECIAL PROVISIONS.

ALL DIMENSIONS ARE IN INCHES UNLESS OTHERWISE SHOWN.

MODEL: 4\MODEL\MAR15
FILE: Mar15 - 3100 - work\pds\dat\caterofbusa\0601613103068684-rtt-details.dgn

USER NAME = OTEROFEBUSA	DESIGNED -	REVISED -
	DRAWN -	REVISED -
PLOT SCALE = 100.0000' / in.	CHECKED -	REVISED -
PLOT DATE = 3/29/2019	DATE -	REVISED -

**STATE OF ILLINOIS
DEPARTMENT OF TRANSPORTATION**

STANDARD 701400 (SPECIAL)

SCALE: SHEET 1 OF 1 SHEETS STA. TO STA.

F.A.I. RTE.	SECTION	COUNTY	TOTAL SHEETS	SHEET NO.
39	(50-1,2,3)PP	LASALLE	15	15
CONTRACT NO. 66J84			ILLINOIS FED. AID PROJECT	