

STATE OF ILLINOIS
DEPARTMENT OF TRANSPORTATION

FAI RTE.	SECTION	COUNTY	TOTAL SHEETS	SHEET NO.
39	(50-4) K&PP	LASALLE	14	1
		ILLINOIS	CONTRACT NO. 66J97	

INDEX OF SHEETS

1. COVER SHEET
2. LAYOUT MAP
3. GENERAL NOTES
- 4-5. SUMMARY OF QUANTITIES
- 6-7. TYPICAL SECTIONS
- 8-11. SCHEDULES
- 12-13. CLASS B PATCHING DETAILS
14. DETAILS

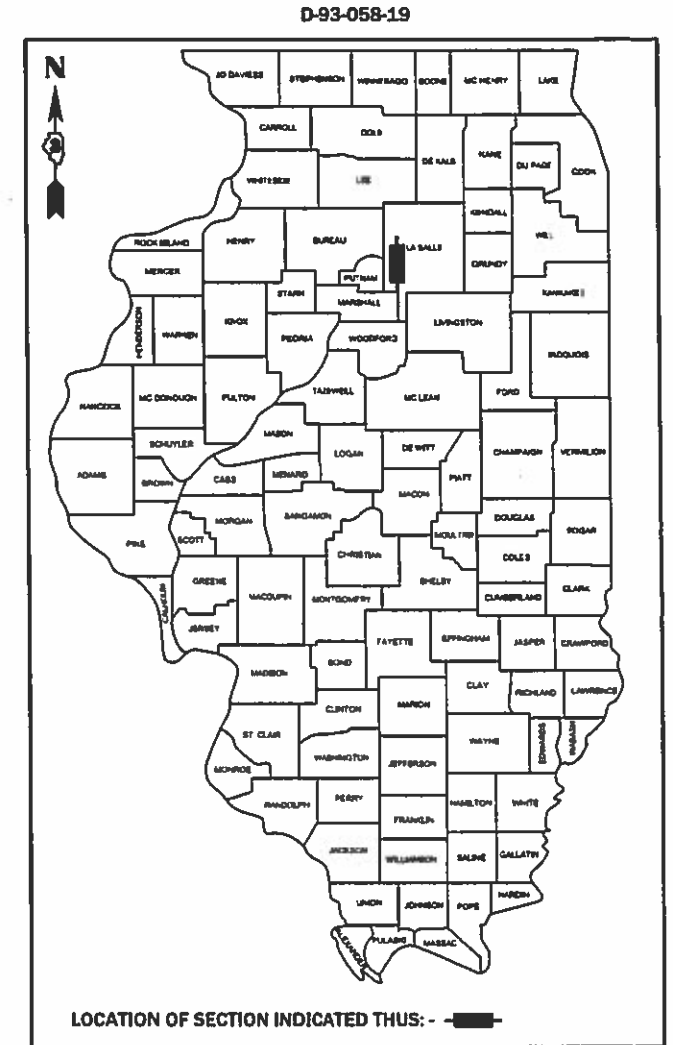
STANDARDS

- 701001-02 OFF-ROAD OPERATIONS 2L, 2W, MORE THAN 15' (4.5 m) AWAY
701006-05 OFF-ROAD OPERATIONS 2L, 2W, 15' (4.5 m) TO 24" (600 mm) FROM PAVEMENT EDGE
701201-05 LANE CLOSURE, 2L, 2W, DAY ONLY, FOR SPEEDS ≥ 45 MPH
701456-05 PARTIAL EXIT RAMP CLOSURE FREEWAY/EXPRESSWAY
701901-08 TRAFFIC CONTROL DEVICES

PROPOSED HIGHWAY PLANS

FAI ROUTE 39 (I-39) SECTION (50-4) K&PP PROJECT PAVEMENT PATCHING LASALLE COUNTY

C-93-082-19



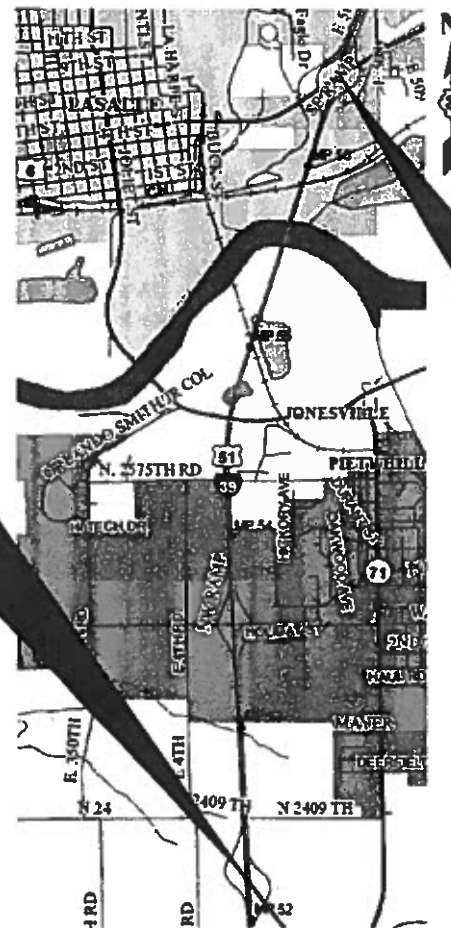
FUNCTIONAL CLASSIFICATION URBAN - US 6 MAJOR COLLECTOR 2017 ADT = 8100 P.V. 93% S.U. 4.01% M.U. 3.09%	FUNCTIONAL CLASSIFICATION RURAL - IL 251 MAJOR COLLECTOR 2017 ADT = 4200 P.V. 95% S.U. 3.57% M.U. 2.14%
--	--

IMPROVEMENT
LOCATION NO. 2

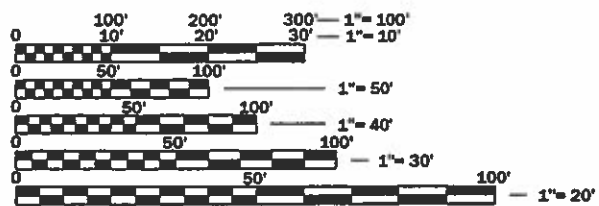
INTERSECTION OF I-39
AND IL 251 INTERCHANGE

IMPROVEMENT
LOCATION NO. 1

INTERSECTION OF I-39
AND US 6 INTERCHANGE



POINT LOCATIONS



FULL SIZE PLANS HAVE BEEN PREPARED USING STANDARD ENGINEERING SCALES. REDUCED SIZED PLANS WILL NOT CONFORM TO STANDARD SCALES. IN MAKING MEASUREMENTS ON REDUCED PLANS, THE ABOVE SCALES MAY BE USED.

J.U.L.I.E.
JOINT UTILITY LOCATION INFORMATION FOR EXCAVATION
1-800-892-0123
OR 811

PROJECT ENGINEER JOE KANNEL P.E.
UNIT CHIEF RON WOODSHANK
DISTRICT 3 NO. (815) 434-6131
CONTRACT NO. 66J97

STATE OF ILLINOIS
DEPARTMENT OF TRANSPORTATION

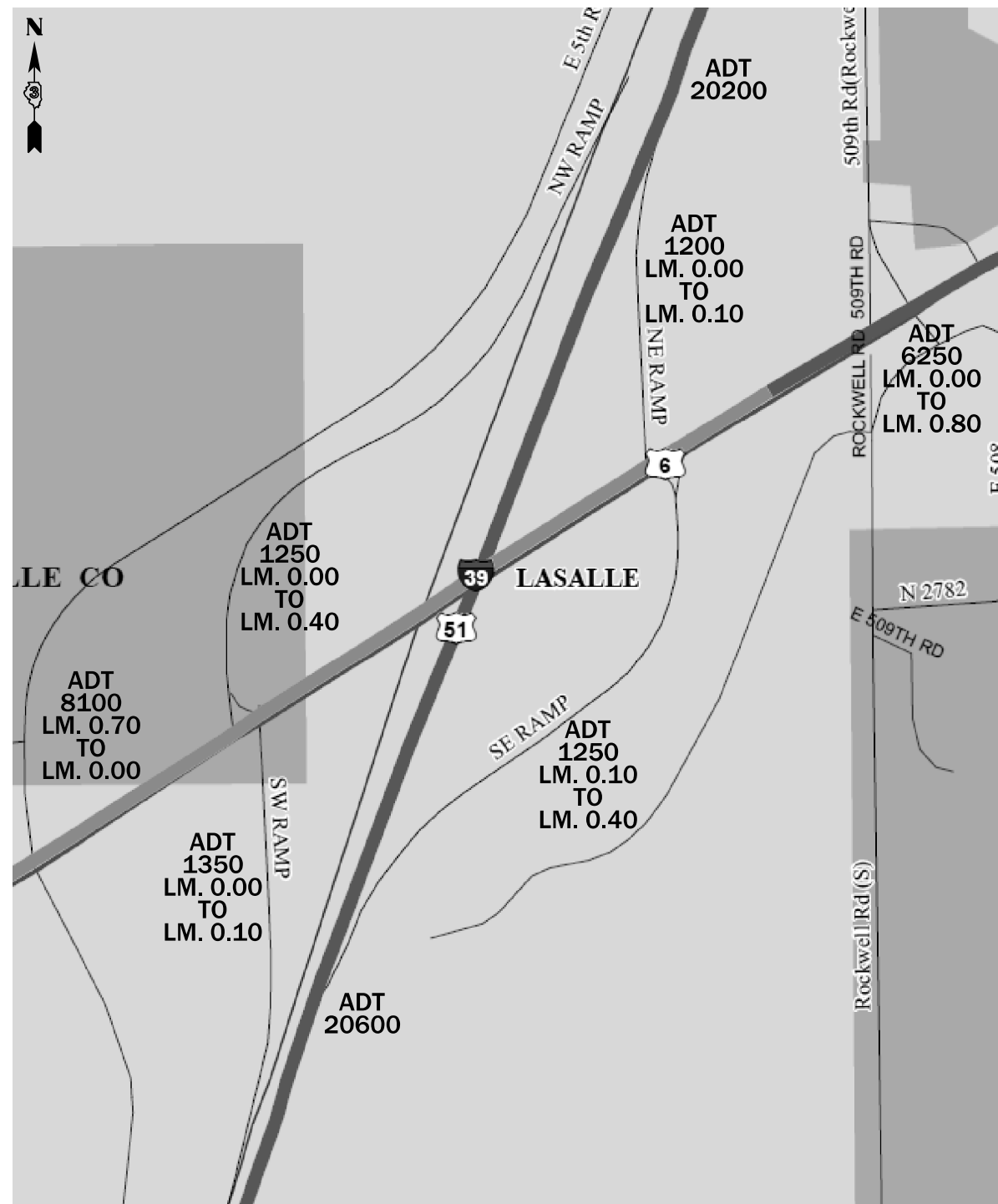
SUBMITTED 3-28 2019
Mark
REGIONAL ENGINEER

May 10 2019
Paul
ENGINEER OF DESIGN AND ENVIRONMENT

May 19 2019
Paul
DIRECTOR OF HIGHWAYS PROJECT IMPLEMENTATION

PRINTED BY THE AUTHORITY
OF THE STATE OF ILLINOIS

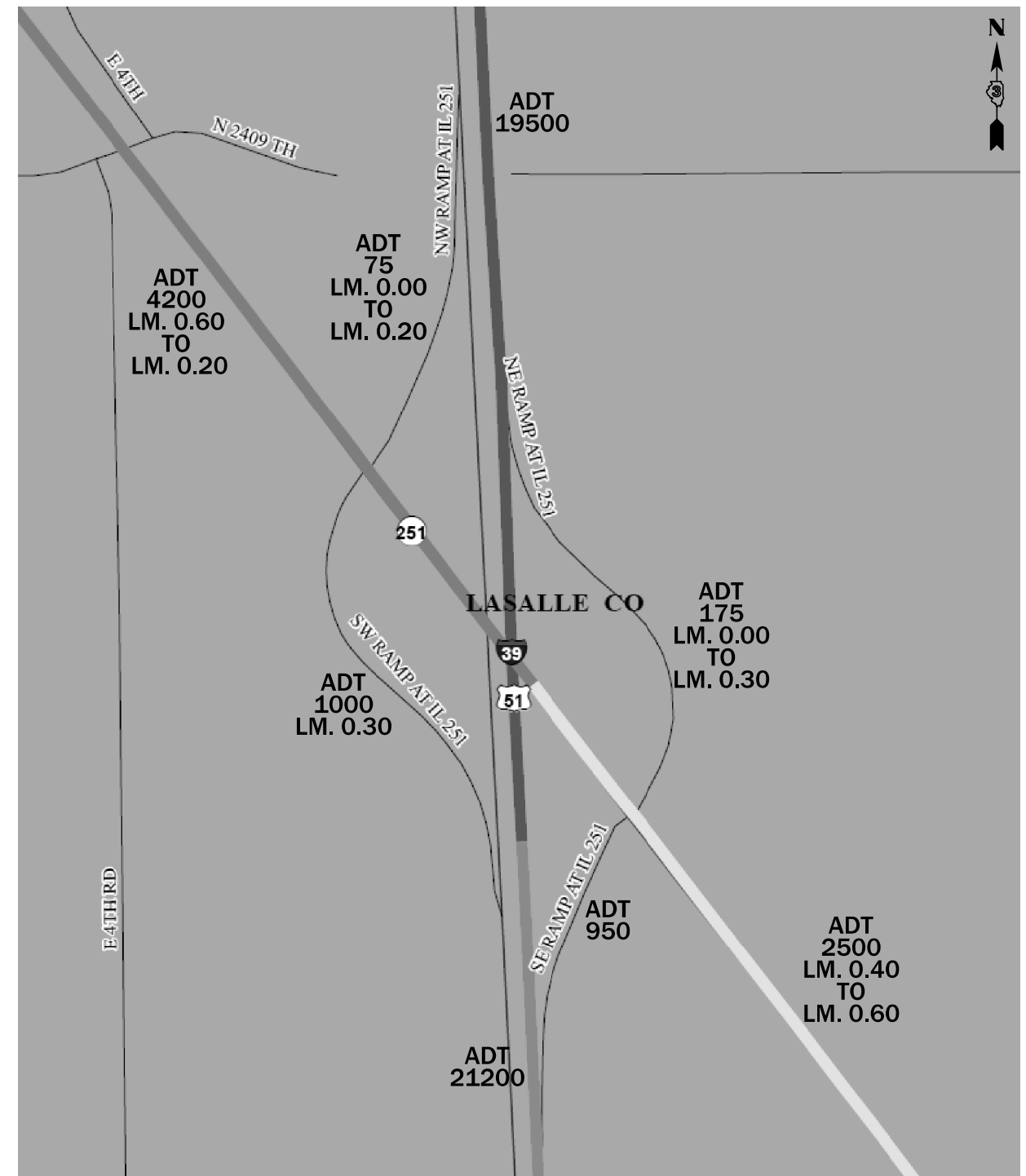
SN: 050-0195



GROSS LENGTH:

US 6 = 3168 FT. = 0.60 MILE
 SB-ON RAMP = 1584 FT. = 0.30 MILE
 NB-ON RAMP = 1584 FT. = 0.30 MILE
 SB-OFF RAMP = 1056 FT. = 0.20 MILE
 NB-OFF RAMP = 0 FT. = 0.00 MILE

SN: 050-0200



GROSS LENGTH:

IL 251 = 4224 FT. = 0.80 MILE
 SB-ON RAMP = 528 FT. = 0.10 MILE
 NB-ON RAMP = 528 FT. = 0.10 MILE
 SB-OFF RAMP = 2112 FT. = 0.40 MILE
 NB-OFF RAMP = 2112 FT. = 0.40 MILE

FILE NAME =	USER NAME = MARINEJ	DESIGNED - EVAN MARINI	REVISED -	STATE OF ILLINOIS DEPARTMENT OF TRANSPORTATION	LAYOUT MAP	F.A.I. RTE.	SECTION	COUNTY	TOTAL SHEETS	SHEET NO.	
pwc\planroom\dot\llinois.gov\PWIDOT\Documents\IDOT	0\ices\District 3\Projects\I366J97\CADData\66J97-cover.dgn	DRAWN - EVAN MARINI	REVISED -			39	(50-4) K&PP	LASALLE	14	2	
Default	PLOT SCALE = 3,9529' / mm	CHECKED - RON WOODSHANK	REVISED -			CONTRACT NO. 66J97					
	PLOT DATE = 3/19/2019	DATE - 1/22/2019	REVISED -			ILLINOIS FED. AID PROJECT					

GENERAL NOTES

FOR STABILIZATION, ALL TYPE III BARRICADES WILL REQUIRE A MINIMUM OF FOUR SAND BAGS PER BARRICADE.

ALL EXCAVATED MATERIAL, WHICH INCLUDES DIGGING OR GRADING OF ANY SOIL OR FILL MATERIAL, WITH THE EXCEPTION OF AGGREGATE FILLS, MUST BE INCORPORATED WITHIN THE IDOT RIGHT OF WAY DUE TO ENVIRONMENTAL DOCUMENTATION REQUIREMENTS.

ANY REFERENCE TO A STANDARD IN THESE PLANS SHALL BE INTERPRETED TO MEAN THE EDITION AS INDICATED BY THE SUBNUMBER SHOWN IN THE LIST OF STANDARDS OR THE COPY INCLUDED IN THESE PLANS.

THE CONTRACTOR SHALL CONTACT JULIE AT LEAST 48 HOURS PRIOR TO EXCAVATION TO DETERMINE WHICH UTILITIES ARE IN THE AREA.

COMMITMENTS

GPS NUMBER	DESCRIPTION	EXISTING MONUMENT TYPE	PROPOSED MONUMENT TYPE	MONUMENT RECORD TO BE RECORDED	RESPONSIBILITY
N/A	NO CENTERLINE CONTROL OR SECTION CORNER PERMANENT SURVEY MARKERS TO BE SET	N/A	N/A	N/A	N/A
<p>THERE ARE NO RECORD LAND SURVEY OR CENTERLINE CONTROL MONUMENTS LOCATED ON THE I-39 ROAD SURFACE WITHIN THE JOB LIMITS. UNKNOWN MONUMENTS SET BY OTHERS MAY EXIST. IF FOUND, THE R.E. MUST TIE AND REQUEST PLATS AND PLANS PERSONNEL TO GPS ANY MONUMENT SUBJECT TO DAMAGE OR DESTRUCTION FROM THE PAVEMENT PATCHING, AND INFORM THEM TO RESET THESE MONUMENTS UPON JOB COMPLETION. THE R.E. IS TO INFORM THE PLATS AND PLANS SECTION TO SEARCH FOR ADDITIONAL MONUMENTS IF JOB LIMITS ARE EXPANDED DURING CONSTRUCTION. NO MONUMENT RECORDS WILL BE REQUIRED FOR THIS JOB.</p>					

STATE OF ILLINOIS
DEPARTMENT OF TRANSPORTATION
DISTRICT THREE
AS BUILT INFORMATION

SUPERVISING CONSTRUCTION FIELD ENGINEER

RESIDENT ENGINEER / TECHNICIAN

START & END DATES
OF CONSTRUCTION:

INSPECTORS:

STATE OF ILLINOIS
DEPARTMENT OF TRANSPORTATION
DISTRICT THREE

PREPARED BY: *Tom Beninc*
DISTRICT STUDIES & PLANS ENGINEER

DATE: 3-25-19

EXAMINED BY: *[Signature]*
DISTRICT CONSTRUCTION ENGINEER

[Signature]
DISTRICT MATERIALS ENGINEER

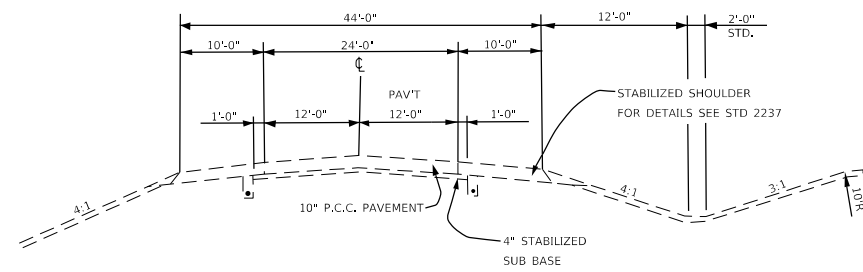
[Signature]
DISTRICT OPERATIONS ENGINEER

FILE NAME =	USER NAME = MARINEJ	DESIGNED - EVAN MARINI	REVISED -	STATE OF ILLINOIS DEPARTMENT OF TRANSPORTATION	GENERAL NOTES	F.A.I. RTE.	SECTION	COUNTY	TOTAL SHEETS	SHEET NO.
pw:\planroom.dot\illinois.gov\PWIDOT\Documents\DOT Offices\District 3\Projects\0366J97\CADData\66J97-cover.dgn	DRAWN - EVAN MARINI	REVISED -	39			(50-4) K&PP	LASALLE	14	3	
Default	PLOT SCALE = 3.9403' / mm	CHECKED - RON WOODSHANK	REVISED -			CONTRACT NO. 66J97				
	PLOT DATE = 3/19/2019	DATE - 1/22/2019	REVISED -			SCALE:	SHEET 1	OF 1	SHEETS STA.	TO STA.

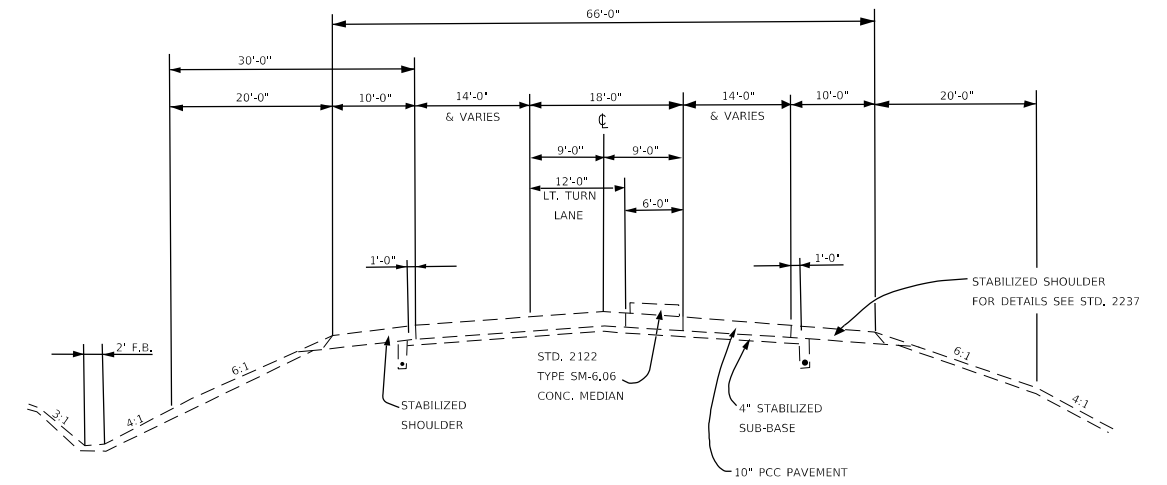
CODE NO.	ITEM	UNIT	TOTAL QUANTITY	CONSTRUCTION CODE	
				CONTRACT MAINTENANCE 100% STATE	
				ROADWAY	ROADWAY
				0006 RURAL	0006 URBAN
4200060	WELDED WIRE REINFORCEMENT	SQ YD	395	37	358
44200934	CLASS B PATCHES, TYPE II, 8 INCH	SQ YD	66	66	
44200942	CLASS B PATCHES, TYPE III, 8 INCH	SQ YD	21	21	
44200970	CLASS B PATCHES, TYPE II, 10 INCH	SQ YD	585	174	411
44200974	CLASS B PATCHES, TYPE III, 10 INCH	SQ YD	242	16	226
44200976	CLASS B PATCHES, TYPE IV, 10 INCH	SQ YD	116		116
44201299	DOWEL BARS 1 1/2"	EACH	1700	520	1180
44213200	SAW CUTS	FOOT	4330	1282	3048
44213204	TIE BARS 3/4"	EACH	25		25
67100100	MOBILIZATION	L SUM	1	0.5	0.5
70100450	TRAFFIC CONTROL AND PROTECTION, STANDARD 701201	L SUM	1	0.5	0.5
70100825	TRAFFIC CONTROL AND PROTECTION, STANDARD 701456	L SUM	1	0.5	0.5
70107025	CHANGEABLE MESSAGE SIGN	CAL DA	6	3	3
Z0017099	DOWEL BAR ASSEMBLY	EACH	14	4	10

FILE NAME =	USER NAME = MARINIEJ	DESIGNED - EVAN MARINI	REVISED -	STATE OF ILLINOIS DEPARTMENT OF TRANSPORTATION	SUMMARY OF QUANTITIES			FAI RTE.	SECTION	COUNTY	TOTAL SHEETS	SHEET NO.
p:\w2\planroom\dott\illinois.gov\PIDOT\Documents\IDOT	Offices\District 3\Projects\D366J97\CADData\66J97-cover.dgn	DRAWN - EVAN MARINI	REVISED -					39	(50-4) K&PP	LASALLE	14	4
Default	PLOT SCALE = 3,9442 / mm	CHECKED - RON WOODSHANK	REVISED -		SCALE: SHEET 1 OF 2 SHEETS STA. TO STA.			CONTRACT NO. 66J97				
	PLOT DATE = 3/19/2019	DATE - 1/22/2019	REVISED -		ILLINOIS FED. AID PROJECT							

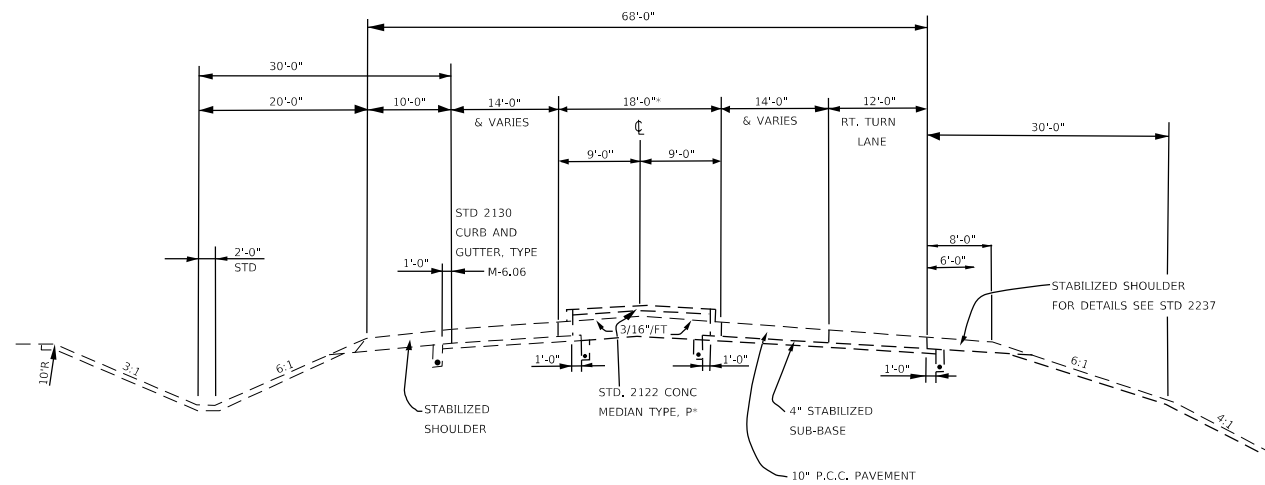
CODE NO.	ITEM	UNIT	TOTAL QUANTITY	CONSTRUCTION CODE	
				CONTRACT MAINTENANCE	
				100% STATE	
				ROADWAY	ROADWAY
				0006	0006
				RURAL	URBAN
Z0030850	TEMPORARY INFORMATION SIGNING	SQ FT	42	21	21



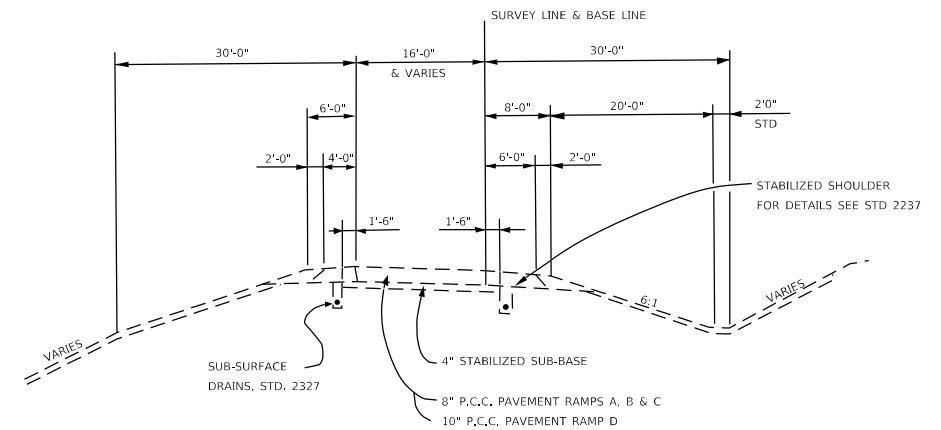
TYPICAL CROSS SECTION FOR IL HWY 251
 LM. 0.00 TO LM. 0.05
 LM. 0.70 TO LM. 0.71



TYPICAL CROSS SECTION FOR IL HWY 251
18'-0" MEDIAN WITH LEFT TURN LANE
 LM. 0.22 TO LM. 0.26
 LM. 0.43 TO LM. 0.48



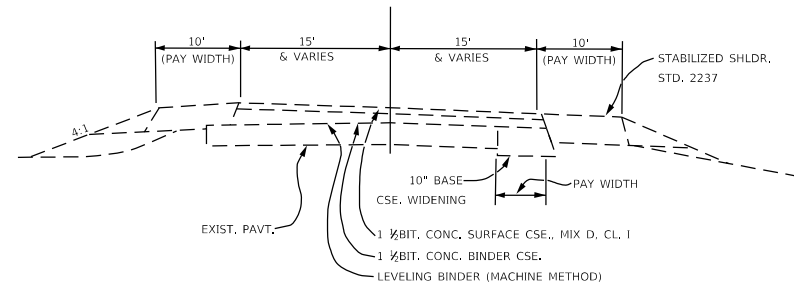
TYPICAL CROSS SECTION FOR IL HWY 251
18'-0" MEDIAN WITH LEFT TURN LANE
 LM. 0.18 TO LM. 0.20
 LM. 0.52 TO LM. 0.57



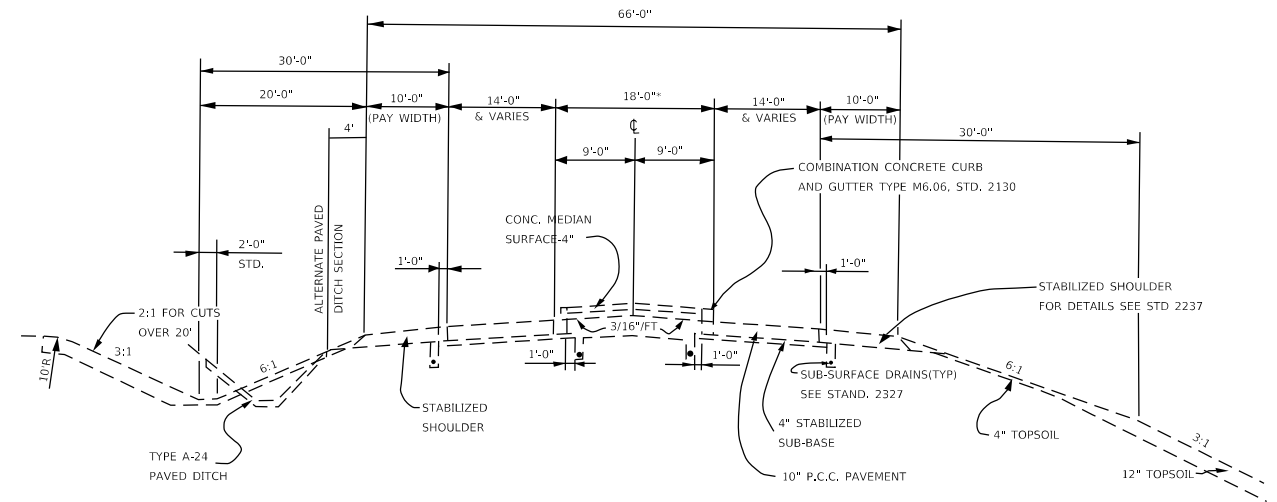
TYPICAL CROSS SECTION FOR RAMP

IL 251
TYPICAL SECTIONS

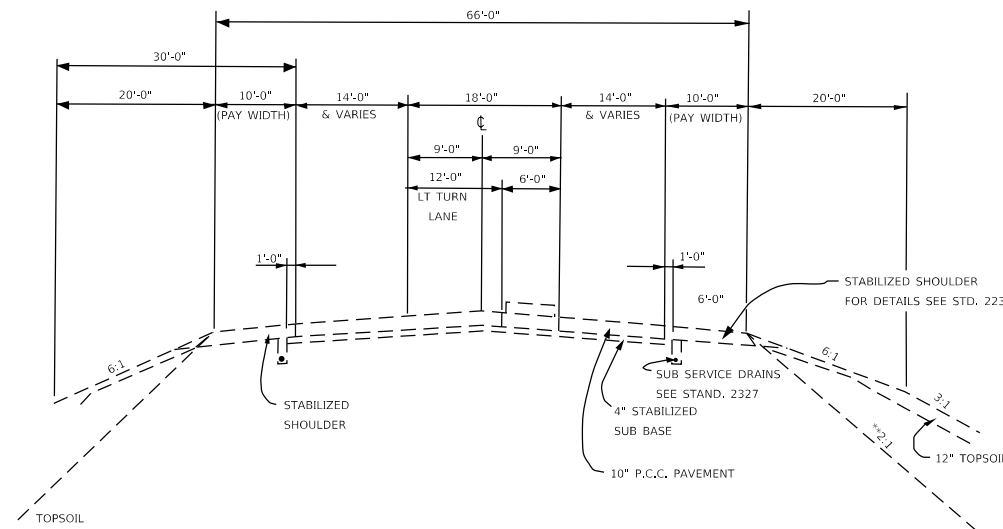
FILE NAME =	USER NAME = MARINIEJ	DESIGNED - EVAN MARINI	REVISED -	STATE OF ILLINOIS DEPARTMENT OF TRANSPORTATION	TYPICAL SECTION	F.A.I. R.T.E.	SECTION	COUNTY	TOTAL SHEETS	SHEET NO.	
pw:\planroom\dot\il\inc\gov\FWIDOT\Documents\DOT	offices\dist\c1 3\Projects\I366\97\CADData\66\97-cover.dgn	DRAWN - EVAN MARINI	REVISED -			39	(50-4) K&PP	LASALLE	14	6	
Default	PLOT SCALE = 3.9393' / mm	CHECKED - RON WOODSHANK	REVISED -			CONTRACT NO. 66J97					
	PLOT DATE = 3/19/2019	DATE - 1/22/2019	REVISED -			SCALE:	SHEET 1	OF 2	SHEETS	STA.	TO STA.



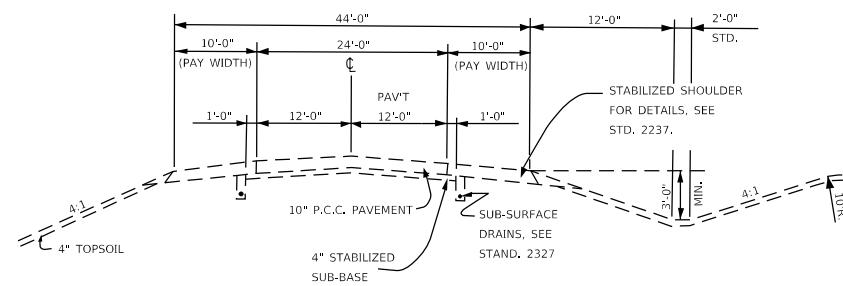
TYPICAL CROSS SECTION FOR US 6 WIDENING & RESURFACING
LM. 0.00 TO LM. 0.09



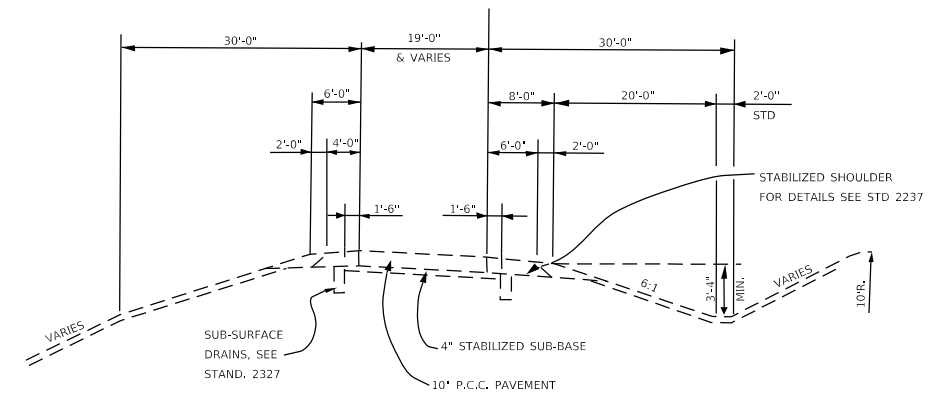
TYPICAL CROSS SECTION FOR U.S. 6
LM. 0.09 TO LM. 0.30
LM. 0.53 TO LM. 0.62
LM. 0.72 TO LM. 0.95



TYPICAL CROSS SECTION FOR U.S. 6
LM. 0.30 TO LM. 0.53 (EXCEPT BRIDGE)
LM. 0.62 TO LM. 0.72



TYPICAL CROSS SECTION FOR U.S. 6
LM. 0.95 TO LM. 0.97



TYPICAL CROSS SECTION FOR RAMP

US 6
TYPICAL SECTIONS

FILE NAME =	USER NAME = MARINIEJ	DESIGNED - EVAN MARINI	REVISED -
pwt\planroom\dot\ilinois.gov\PW\DOT\Documents\DOT\Projects\District 3\Projects\0366\97\CADData\66\97-cover.dgn		DRAWN - EVAN MARINI	REVISED -
Default	PLOT SCALE = 3,944.2 / mm	CHECKED - RON WOODSHANK	REVISED -
	PLOT DATE = 3/19/2019	DATE - 1/22/2019	REVISED -

STATE OF ILLINOIS
DEPARTMENT OF TRANSPORTATION

TYPICAL SECTION

SCALE: SHEET 2 OF 2 SHEETS STA. TO STA.

F.A.J. RTE.	SECTION	COUNTY	TOTAL SHEETS	SHEET NO.
39	(50-4) K&PP	LASALLE	14	7
CONTRACT NO. 66J97				
ILLINOIS FED. AID PROJECT				

PATCHING SCHEDULE

EASTBOUND LANE - MAINLINE US 6 - URBAN								
LOCATION	PATCH LENGTH	CLASS B			DOWEL BARS 1 1/2"	SAW CUTS	WELDED WIRE REINF.	TIE BARS 3/4"
		TYPE II 10"	TYPE III 10"	TYPE IV 10"				
LOG MILE	(FT)	SQ YD	SQ YD	SQ YD	EACH	FOOT	SQ YD	EACH
0.00	6	10			20	48		
0.20	8	12			20	52		
0.20	6				20	48		
0.20	6	9			20	48		
0.30	6	9			20	48		
0.60	6	9			20	48		
0.60	6	9			20	48		
0.60	6	9			20	48		
0.70	6	9			20	48		
0.70	6	9			20	48		
0.80	10		16		20	56	16	
0.80	6	9			20	48		
TOTALS		94	16		240	588	16	

PATCHING SCHEDULE

WESTBOUND LANE - MAINLINE US 6 - URBAN								
LOCATION	PATCH LENGTH	CLASS B			DOWEL BARS 1 1/2"	SAW CUTS	WELDED WIRE REINF.	TIE BARS 3/4"
		TYPE II 10"	TYPE III 10"	TYPE IV 10"				
LOG MILE	(FT)	SQ YD	SQ YD	SQ YD	EACH	FOOT	SQ YD	EACH
0.70	6	9			20	48		
0.70	6	9			20	48		
0.70	6	9			20	48		
0.50	6	8			20	48		
0.40	6	8			20	48		
0.40	6	8			20	48		
0.40	6	8			20	48		
0.40	6	8			20	48		
0.40	6	8			20	48		
0.40	10		16		20	56	16	
0.30	6	6			20	48		
0.30	6	9			20	48		
0.30	6	8			20	48		
0.30	6	8			20	48		
0.20	6	9			20	48		
0.00	6	9			20	48		
0.00	6	9			20	48		
TOTALS		67	16		160	384	16	

PATCHING SCHEDULE

SOUTHBOUND OFF RAMP - MAINLINE US 6 - URBAN								
LOCATION	PATCH LENGTH	CLASS B			DOWEL BARS 1 1/2"	SAW CUTS	WELDED WIRE REINF.	TIE BARS 3/4"
		TYPE II 10"	TYPE III 10"	TYPE IV 10"				
LOG MILE	(FT)	SQ YD	SQ YD	SQ YD	EACH	FOOT	SQ YD	EACH
0.00	6	11			20	48		
0.00	30			53	20	96	53	15
0.10	10		18		20	56	18	
0.10	10		18		20	56	18	
0.10	6	11			20	48		
0.20	10		18		20	56	18	
0.20	6	11			20	48		
0.30	6	11			20	48		
0.40	10		18		20	56	18	
0.40	16		20		20	68	20	
0.40	11		23		20	58	23	
TOTALS		44	115	53	220	638	168	15

PATCHING SCHEDULE

NORTHBOUND OFF RAMP - MAINLINE US 6 - URBAN								
LOCATION	PATCH LENGTH	CLASS B			DOWEL BARS 1 1/2"	SAW CUTS	WELDED WIRE REINF.	TIE BARS 3/4"
		TYPE II 10"	TYPE III 10"	TYPE IV 10"				
LOG MILE	(FT)	SQ YD	SQ YD	SQ YD	EACH	FOOT	SQ YD	EACH
0.10	6	11			20	48		
0.10	10		18		20	56	18	
0.10	6	11			20	48		
0.10	6	11			20	48		
0.10	6	11			20	48		
0.10	6	11			20	48		
0.20	8	14			20	52		
0.20	6	11			20	48		
0.30	6	11			20	48		
0.30	15			27	20	66	27	
0.40	6	11			20	48		
0.40	10		20		20	56	20	
TOTALS		102	38	27	240	614	65	

PATCHING SCHEDULE

SOUTHBOUND ON RAMP - MAINLINE US 6 - URBAN								
LOCATION	PATCH LENGTH	CLASS B			DOWEL BARS 1 1/2"	SAW CUTS	WELDED WIRE REINF.	TIE BARS 3/4"
		TYPE II 10"	TYPE III 10"	TYPE IV 10"				
LOG MILE	(FT)	SQ YD	SQ YD	SQ YD	EACH	FOOT	SQ YD	EACH
0.00	6	10			20	48		
0.00	6	11			20	48		
0.10	6				20	48		
0.10	6	11			20	48		
0.10	6	11			20	48		
0.10	10		18		20	56	18	
0.10	6	11			20	48		
0.10	6	11			20	48		
TOTALS		65	18		160	392	18	

PATCHING SCHEDULE

NORTHBOUND ON RAMP - MAINLINE US 6 - URBAN								
LOCATION	PATCH LENGTH	CLASS B			DOWEL BARS 1 1/2"	SAW CUTS	WELDED WIRE REINF.	TIE BARS 3/4"
		TYPE II 10"	TYPE III 10"	TYPE IV 10"				
LOG MILE	(FT)	SQ YD	SQ YD	SQ YD	EACH	FOOT	SQ YD	EACH
0.00	6	7			20	48		
0.00	6	7			20	48		
0.00	6	7			20	48		
0.00	6	7			20	48		
0.00	12		21		20	60	21	
0.10	6	11			20	48		
0.10	10		18		20	56	18	
0.10	20			36	20	76	36	10
TOTALS		39	39	36	160	432	75	10

PATCHING SCHEDULE

EASTBOUND LANE - MAINLINE IL 251 - RURAL								
LOCATION	PATCH LENGTH	CLASS B			DOWEL BARS 1 1/2"	SAW CUTS	WELDED WIRE REINF.	TIE BARS 3/4"
		TYPE	TYPE	TYPE				
		II 10"	III 10"	IV 10"				
LOG MILE	(FT)	SQ YD	SQ YD	SQ YD	EACH	FOOT	SQ YD	EACH
0.40	9	12			20	54		
0.40	6	8			20	48		
0.50	6	9			20	48		
0.60	6	9			20	48		
TOTALS		38			80	198		

PATCHING SCHEDULE

WESTBOUND LANE - MAINLINE IL 251 - RURAL								
LOCATION	PATCH LENGTH	CLASS B			DOWEL BARS 1 1/2"	SAW CUTS	WELDED WIRE REINF.	TIE BARS 3/4"
		TYPE	TYPE	TYPE				
		II 10"	III 10"	IV 10"				
LOG MILE	(FT)	SQ YD	SQ YD	SQ YD	EACH	FOOT	SQ YD	EACH
0.60	6	9			20	48		
0.60	6	9			20	48		
0.60	6	8			20	48		
0.50	6	9			20	48		
0.50	6	9			20	48		
0.20	6	9			20	48		
TOTALS		53			120	288		

PATCHING SCHEDULE

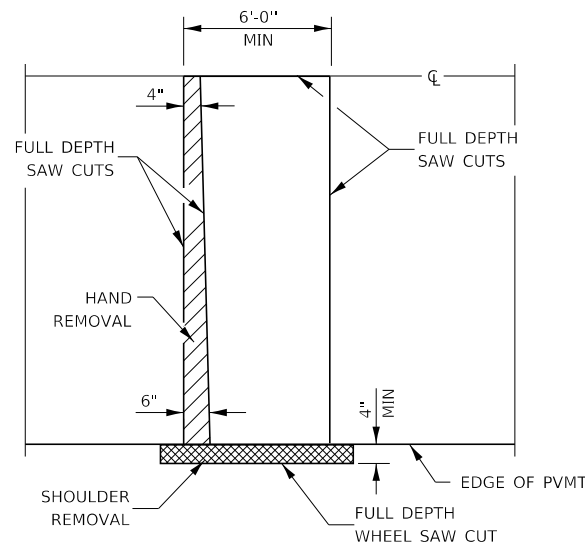
SOUTHBOUND OFF RAMP - MAINLINE IL 251 - RURAL								
LOCATION	PATCH LENGTH	CLASS B			DOWEL BARS 1 1/2"	SAW CUTS	WELDED WIRE REINF. 3/4"	TIE BARS
		TYPE II 8"	TYPE III 8"	TYPE IV 8"				
		SQ YD	SQ YD	SQ YD				
LOG MILE	(FT)	SQ YD	SQ YD	SQ YD	EACH	FOOT	SQ YD	EACH
0.00	6	11			20	48		
0.00	6	11			20	48		
0.10	6	11			20	48		
0.10	6	11			20	48		
0.20	6	11			20	48		
0.20	6	11			20	48		
TOTALS		66			120	288		

PATCHING SCHEDULE

SOUTHBOUND ON RAMP - MAINLINE IL 251 - RURAL								
LOCATION	PATCH LENGTH	CLASS B			DOWEL BARS 1 1/2"	SAW CUTS	WELDED WIRE REINF. 3/4"	TIE BARS
		TYPE II 8"	TYPE III 8"	TYPE IV 8"				
		SQ YD	SQ YD	SQ YD				
LOG MILE	(FT)	SQ YD	SQ YD	SQ YD	EACH	FOOT	SQ YD	EACH
0.30	12		21		20	60	21	
TOTALS			21		20	60	21	

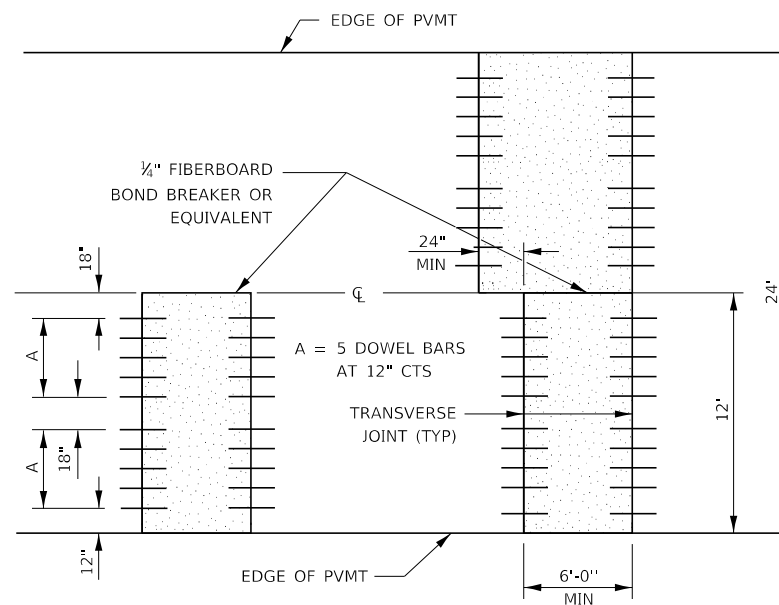
PATCHING SCHEDULE

NORTHBOUND ON RAMP - MAINLINE IL 251 - RURAL								
LOCATION	PATCH LENGTH	CLASS B			DOWEL BARS 1 1/2"	SAW CUTS	WELDED WIRE REINF. 3/4"	TIE BARS
		TYPE II 10"	TYPE III 10"	TYPE IV 10"				
		SQ YD	SQ YD	SQ YD				
LOG MILE	(FT)	SQ YD	SQ YD	SQ YD	EACH	FOOT	SQ YD	EACH
0.00	6	7			20	48		
0.00	6	11			20	48		
0.00	8	10			20	52		
0.00	6	11			20	48		
0.10	6	11			20	48		
0.10	6	11			20	48		
0.10	6	11			20	48		
0.20	12		16		20	60	16	
0.30	6	11			20	48		
TOTALS		83	16		180	448	16	

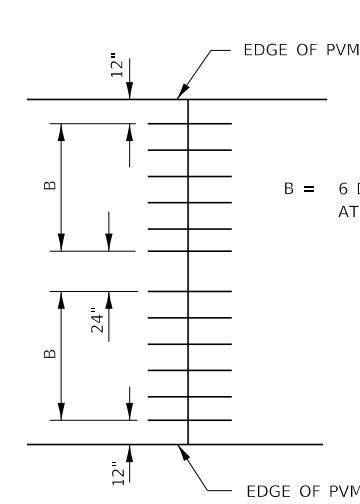


PAVEMENT SAWING DETAIL

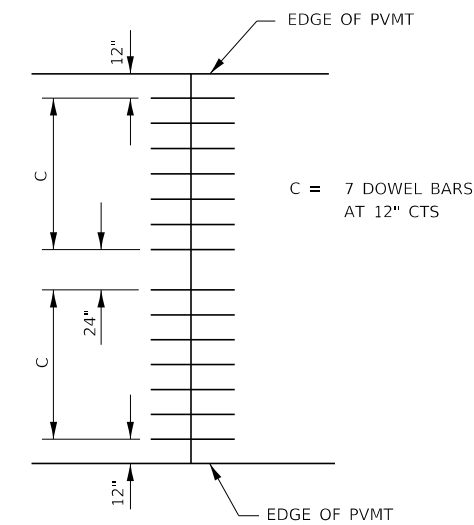
(HMA SHOULDER)



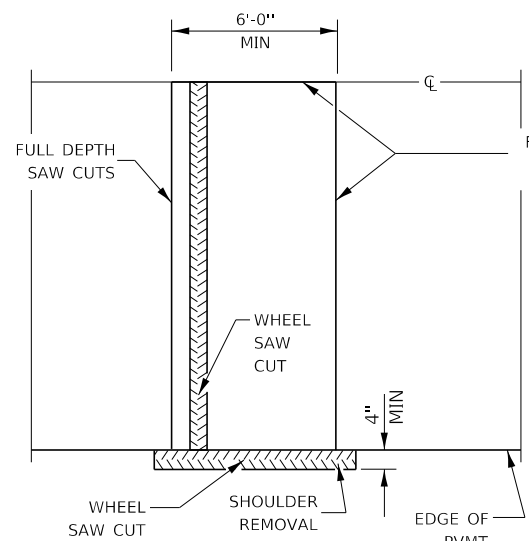
12' WIDE LANES



14' WIDE RAMP

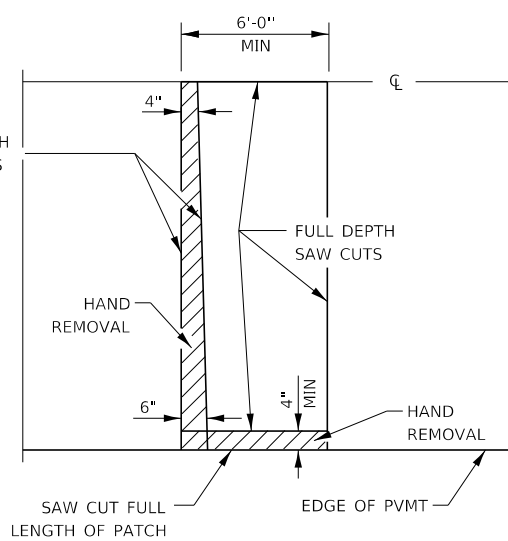


16' WIDE RAMP



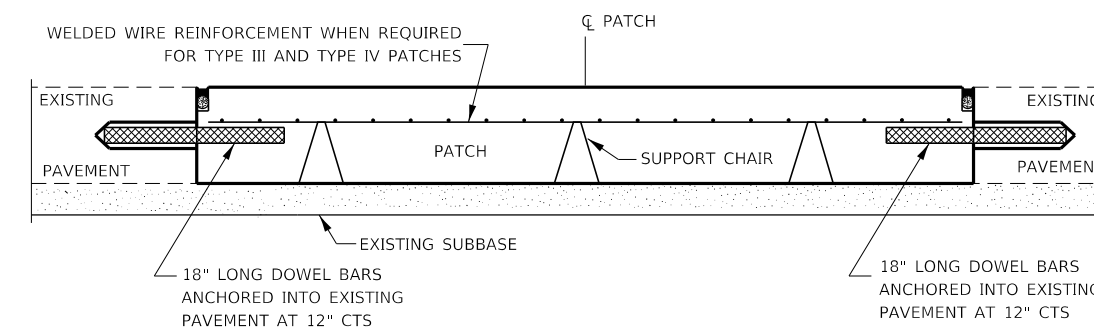
ALTERNATE SAWING DETAIL

(HMA SHOULDER)

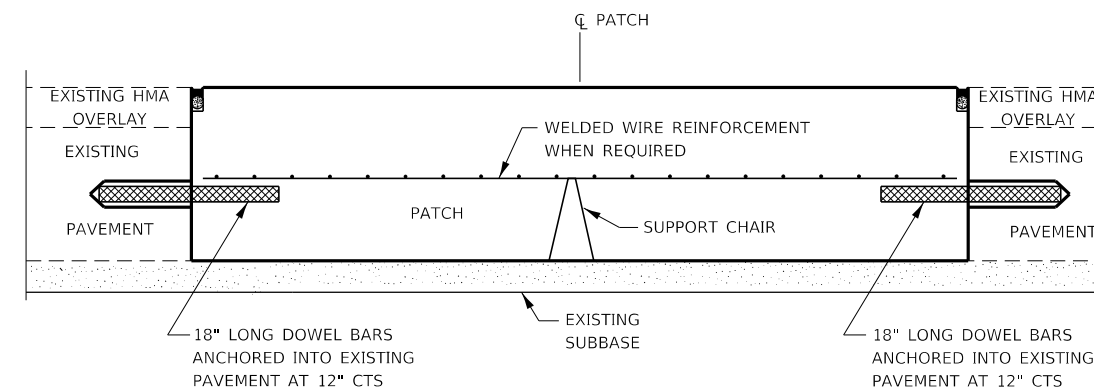


PAVEMENT SAWING DETAIL

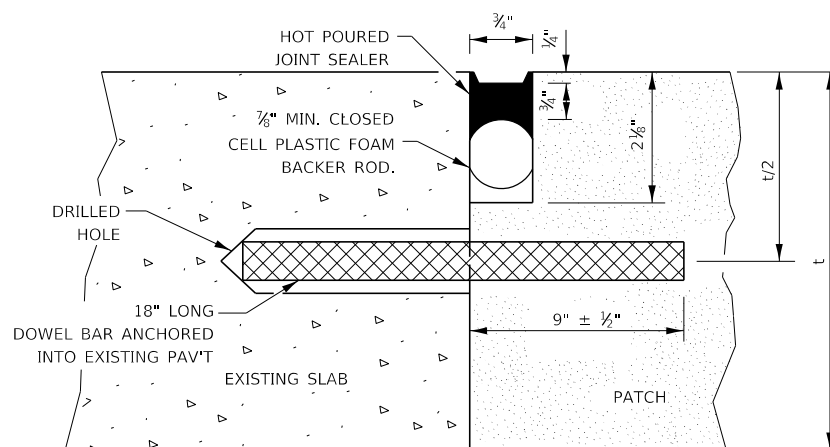
(PCC SHOULDER)



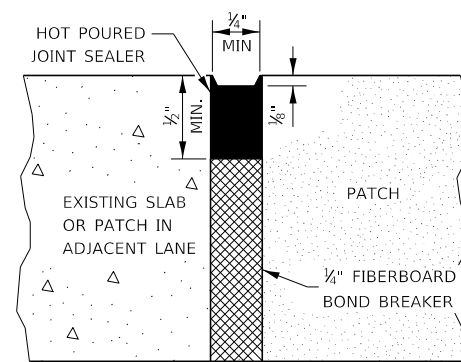
PATCHING WITHOUT HMA OVERLAY



PATCHING WITH HMA OVERLAY



TRANSVERSE JOINT



CENTERLINE JOINT

DOWEL BAR TABLE		
PAVEMENT THICKNESS	DOWEL BAR DIAMETER	HOLE DIAMETER
8" OR GREATER	1 1/2"	1 3/8"
7" THRU 7.99"	1 1/4"	1 3/8"
LESS THAN 7"	1"	1 1/8"

GENERAL NOTES

THE TRANSVERSE JOINTS FOR CLASS B PATCHES SHALL ALIGN WITH JOINTS OR CRACKS IN THE ADJACENT LANE WHENEVER POSSIBLE.

SEE STANDARD 420701 FOR DETAILS OF PAVEMENT WELDED WIRE REINFORCEMENT.

MODEL: D:\p\ait FILE NAME: pva\planroom\dot\illinois\gov\p\dot\Documents\DOT_Offices\District_3\Projects\03666\97\CADData\66197-cover.dgn

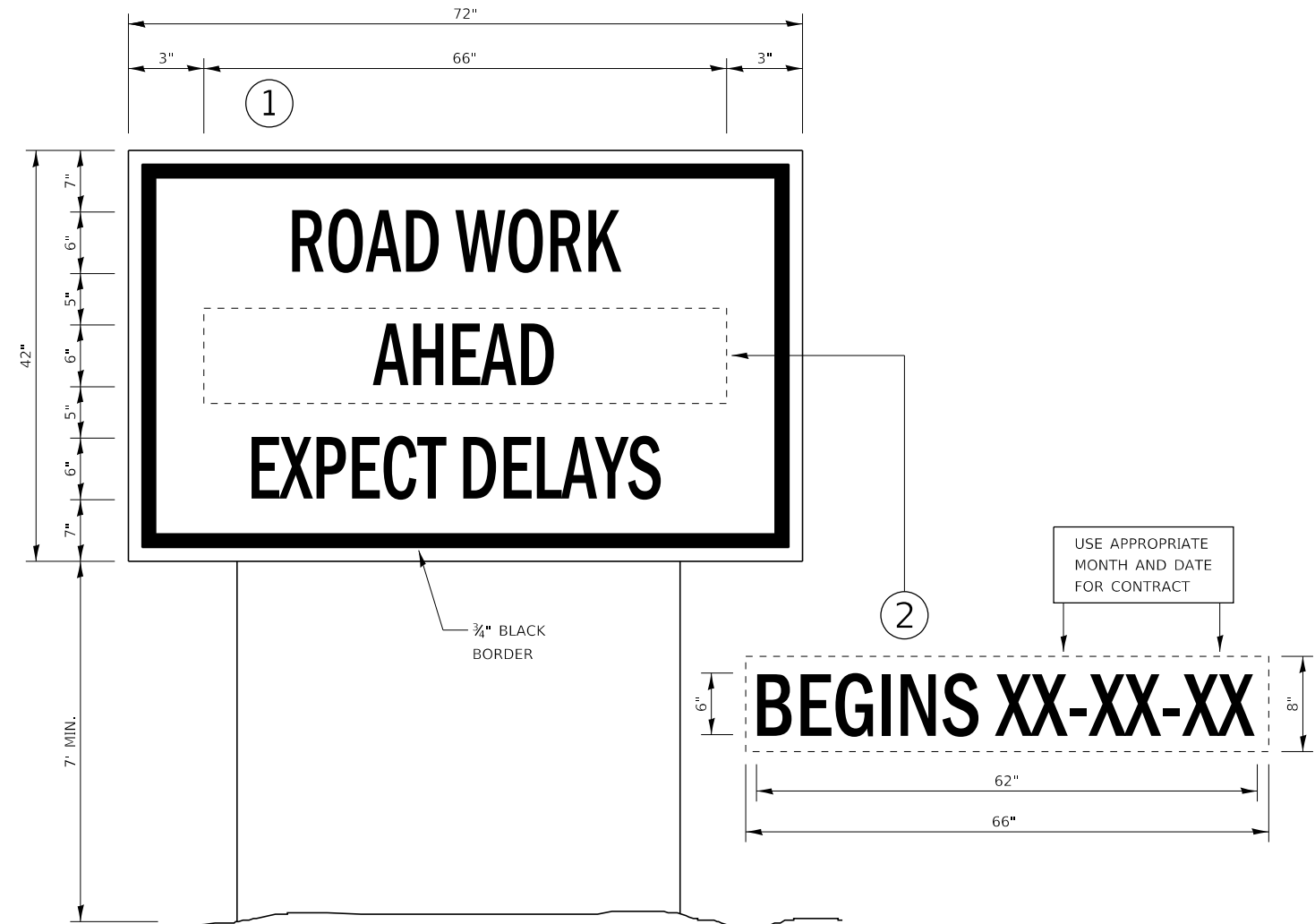
USER NAME = MARINIEJ	DESIGNED - EVAN MARINI	REVISED -
PLOT SCALE = 3.9393' / mm	DRAWN - EVAN MARINI	REVISED -
PLOT DATE = 3/19/2019	CHECKED - RON WOODSHANK	REVISED -
	DATE - 1/22/2019	REVISED -

**STATE OF ILLINOIS
DEPARTMENT OF TRANSPORTATION**

CLASS B PATCHING DETAILS

SCALE: SHEET 1 OF 2 SHEETS STA. TO STA.

F.A.J. RTE. 39	SECTION (50-4) K&PP	COUNTY LASALLE	TOTAL SHEETS 14	SHEET NO. 12
CONTRACT NO. 66J97				ILLINOIS FED. AID PROJECT



TEMPORARY INFORMATION SIGNING

NOTES:

1. USE 6" D BLACK LETTERING ON FLUORESCENT ORANGE BACKGROUND.
2. ERECT SIGNS AT LOCATIONS IN ADVANCE OF THE "ROAD CONSTRUCTION AHEAD" SIGNS AS DIRECTED BY THE ENGINEER.
3. ERECT SIGN ① WITH INSTALLED PANEL ② A MINIMUM OF ONE WEEK PRIOR TO THE START OF THE LANE CLOSURE.
4. REMOVE PANEL ② ON THAT DATE.
5. SEE SPECIAL PROVISION "TEMPORARY INFORMATION SIGNING" FOR ADDITIONAL INFORMATION.
6. WILL BE PAID FOR PER SQ FT AS "TEMPORARY INFORMATION SIGNING". EACH SIGN = 21 SQ FT AND THE DATE PANEL ② WILL NOT BE MEASURED SEPARATELY FOR PAYMENT.

FILE NAME =	USER NAME = MARINEJ	DESIGNED - EVAN MARINI	REVISED -	STATE OF ILLINOIS DEPARTMENT OF TRANSPORTATION	DETAILS				F.A.I. RTE.	SECTION	COUNTY	TOTAL SHEETS	SHEET NO.		
pw2\planroom\dot\hols.gov\PWIDOT\Documents\DOT	Access\District 3\Projects\D366J97\CADData\66J97-cover.dgn	DRAWN - EVAN MARINI	REVISED -		SCALE:	SHEET 1	OF 1	SHEETS	STA.	TO STA.	39	(50-4) K&PP	LASALLE	14	14
Default	PLOT SCALE = 3.9529' / mm	CHECKED - RON WOODSHANK	REVISED -		CONTRACT NO. 66J97										
	PLOT DATE = 3/19/2019	DATE - 1/22/2019	REVISED -		ILLINOIS FED. AID PROJECT										