

187

**INDEX OF SHEETS** 06-14-2019 LETTING ITEM 187

1. COVER SHEET
2. GENERAL NOTES
3. SUMMARY OF QUANTITIES
4. TYPICAL SECTIONS
- 5-7. SCHEDULES
- 8-9. CLASS B PATCHING DETAILS
10. DETAILS

**STANDARDS**

- 701001-02 OFF-ROAD OPERATIONS 2L, 2W, MORE THAN 15' (4.5 m) AWAY
- 701006-05 OFF-ROAD OPERATIONS 2L, 2W, 15' (4.5 m) TO 24" (600 mm) FROM PAVEMENT EDGE
- 701336-07 LANE CLOSURE, 2L, 2W, WORK AREAS IN SERIES, FOR SPEEDS ≥ 45 MPH
- 701501-06 URBAN LANE CLOSURE, 2L, 2W UNDIVIDED
- 701901-08 TRAFFIC CONTROL DEVICES

STATE OF ILLINOIS  
DEPARTMENT OF TRANSPORTATION

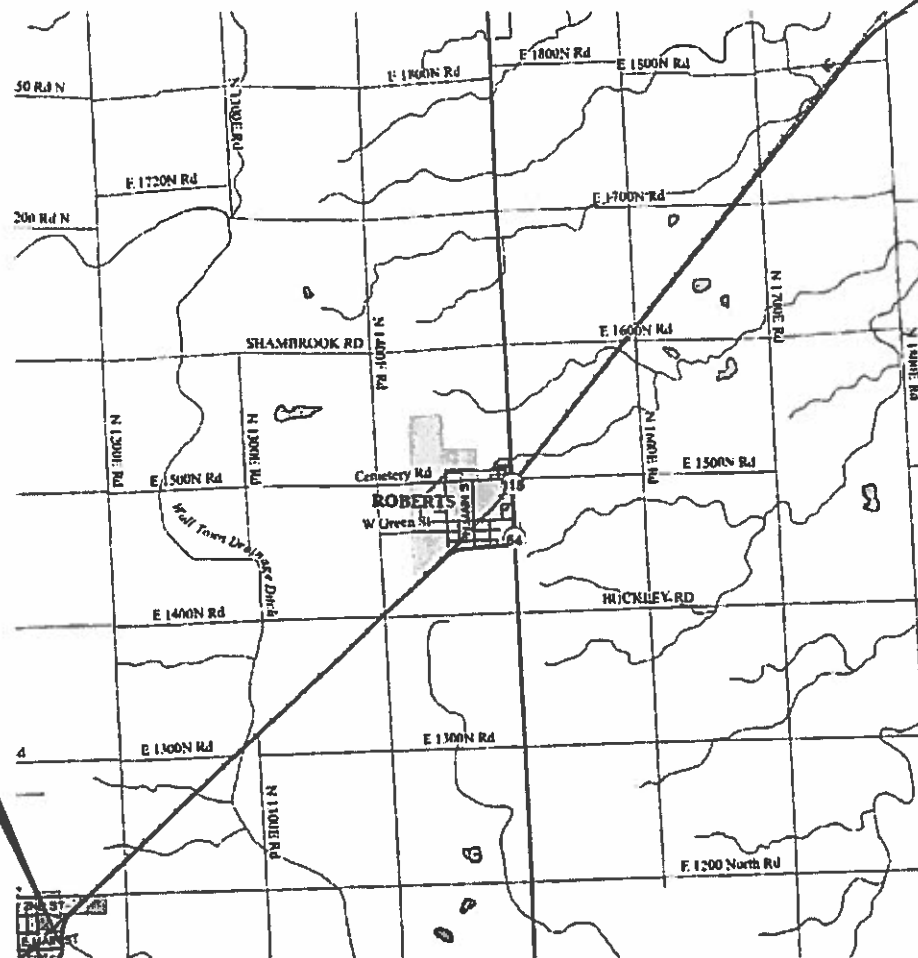
**PROPOSED  
HIGHWAY PLANS**

FAP ROUTE 71 (IL 54)  
SECTION D3 IL 54 PP 2020-6  
PROJECT  
PAVEMENT PATCHING  
FORD COUNTY

END IMPROVEMENT  
IROQUOIS CO. LN.  
LOG MILE 26.6

C-93-088-19

BEGIN IMPROVEMENT  
INTERSECTION OF IL 54  
AND E. MAIN ST. IN MELVIN  
LOG MILE 16.96



FULL SIZE PLANS HAVE BEEN PREPARED USING STANDARD ENGINEERING SCALES. REDUCED SIZED PLANS WILL NOT CONFORM TO STANDARD SCALES. IN MAKING MEASUREMENTS ON REDUCED PLANS, THE ABOVE SCALES MAY BE USED.

J.U.L.I.E.  
JOINT UTILITY LOCATION INFORMATION FOR EXCAVATION  
1-800-892-0123  
OR 811

PROJECT ENGINEER JOE KANNEL P.E.  
UNIT CHIEF RON WOODSHANK  
DISTRICT 3 NO. (815) 434-6131  
CONTRACT NO. 66K04

GROSS LENGTH = 50899 FT. = 9.64 MILE  
NET LENGTH = 50899 FT. = 9.64 MILE

F.A.P. RTE.	SECTION	COUNTY	TOTAL SHEETS	SHEET NO.
71	D3 IL 54 PP 2020-6	FORD	10	1
		ILLINOIS	CONTRACT NO. 66K04	

D-93-064-19



FUNCTIONAL CLASSIFICATION  
RURAL  
MAJOR COLLECTOR  
F.A.P. ROUTE 71 (IL 54)  
2017 ADT = 1000  
P.V. 78% S.U. 6% M.U. 16%

STATE OF ILLINOIS  
DEPARTMENT OF TRANSPORTATION  
SUBMITTED 3-29 2019  
Regional Engineer  
Engineer of Design and Environment  
DIRECTOR OF HIGHWAYS PROJECT IMPLEMENTATION

PRINTED BY THE AUTHORITY  
OF THE STATE OF ILLINOIS

**GENERAL NOTES**

FOR STABILIZATION, ALL TYPE III BARRICADES WILL REQUIRE A MINIMUM OF FOUR SAND BAGS PER BARRICADE.

ALL EXCAVATED MATERIAL, WHICH INCLUDES DIGGING OR GRADING OF ANY SOIL OR FILL MATERIAL, WITH THE EXCEPTION OF AGGREGATE FILLS, MUST BE INCORPORATED WITHIN THE IDOT RIGHT OF WAY DUE TO ENVIRONMENTAL DOCUMENTATION REQUIREMENTS.

ANY REFERENCE TO A STANDARD IN THESE PLANS SHALL BE INTERPRETED TO MEAN THE EDITION AS INDICATED BY THE SUBNUMBER SHOWN IN THE LIST OF STANDARDS OR THE COPY INCLUDED IN THESE PLANS.

THE CONTRACTOR SHALL CONTACT JULIE AT LEAST 48 HOURS PRIOR TO EXCAVATION TO DETERMINE WHICH UTILITIES ARE IN THE AREA.

THE EXISTING CONCRETE PAVEMENT AROUND THE DETECTOR LOOPS SHALL BE AVOIDED UNLESS THE ENGINEER DETERMINES THAT PAVEMENT PATCHING IS REQUIRED. IF PATCHING FALLS WITHIN THE DETECTOR LOOP AREA, CONTACT TRAFFIC SIGNAL SECTION AT 815-434-8506.

**COMMITMENTS**

STATE OF ILLINOIS  
DEPARTMENT OF TRANSPORTATION  
DISTRICT THREE  
AS BUILT INFORMATION

\_\_\_\_\_  
SUPERVISING CONSTRUCTION FIELD ENGINEER

\_\_\_\_\_  
RESIDENT ENGINEER / TECHNICIAN

START & END DATES  
OF CONSTRUCTION:

INSPECTORS:

STATE OF ILLINOIS  
DEPARTMENT OF TRANSPORTATION  
DISTRICT THREE

PREPARED BY: *Don Beaulieu*  
DISTRICT STUDIES & PLANS ENGINEER

DATE: 3-28-19

EXAMINED BY: *[Signature]*  
DISTRICT CONSTRUCTION ENGINEER

*Michael Ashby*  
DISTRICT MATERIALS ENGINEER

*[Signature]*  
DISTRICT OPERATIONS ENGINEER

FILE NAME =	USER NAME = MARINIEJ	DESIGNED - EVAN MARINI	REVISED -
pw:\planroom\dot\illinois.gov\PWIDOT\Documents\IDOT	Office\District 3\Projects\ID366K04\CADData\66K04-cover.dgn	DRAWN - EVAN MARINI	REVISED -
Default	PLOT SCALE = 3.9414" / mm	CHECKED - RON WOODSHANK	REVISED -
	PLOT DATE = 3/15/2019	DATE - 1/22/2019	REVISED -

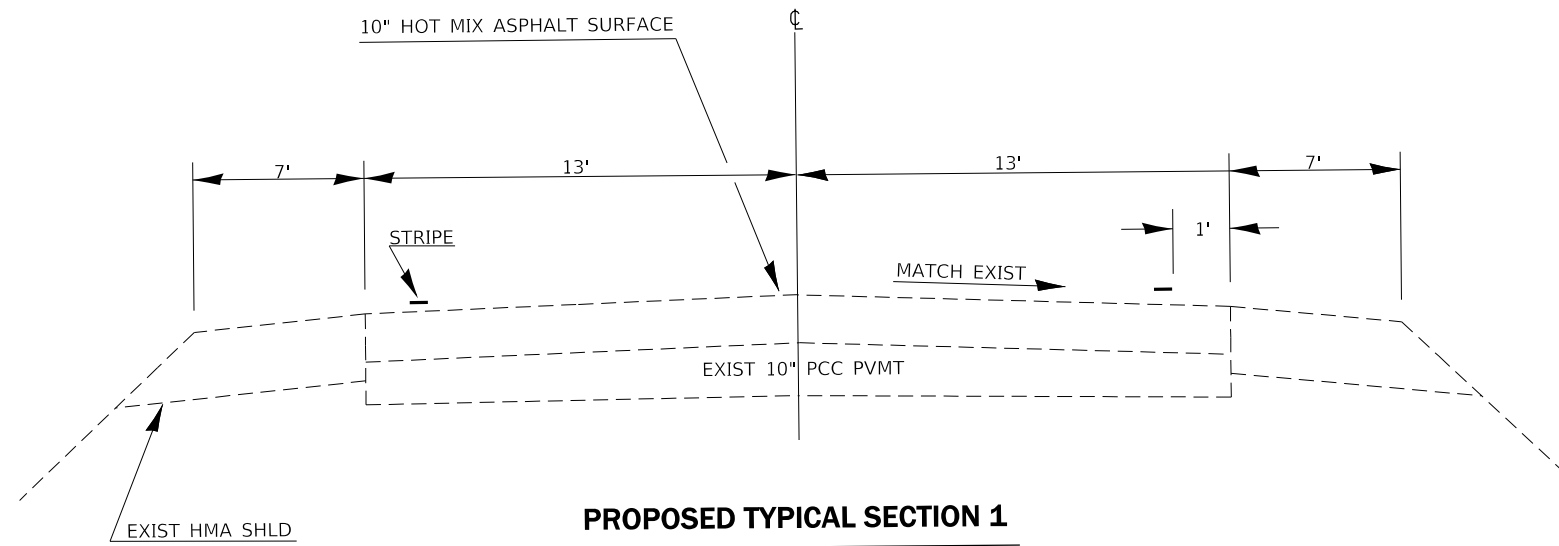
STATE OF ILLINOIS  
DEPARTMENT OF TRANSPORTATION

**GENERAL NOTES**

SCALE: SHEET 1 OF 1 SHEETS STA. TO STA.

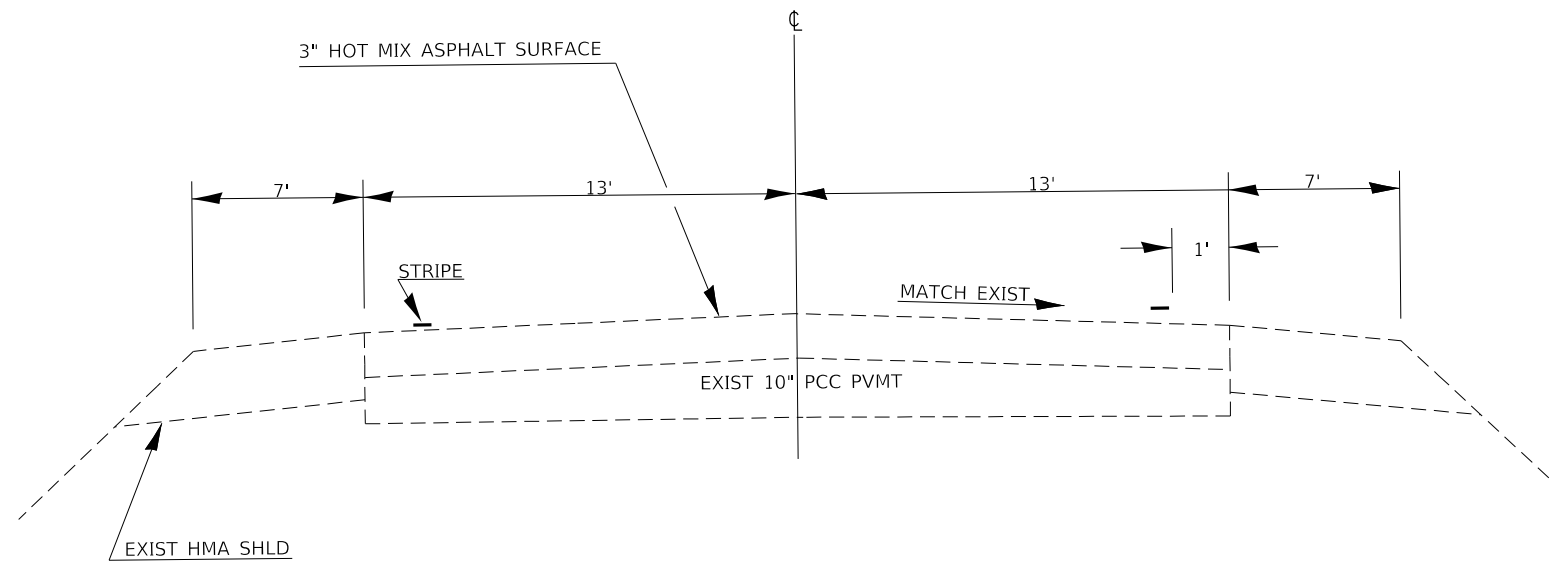
F.A.P. RTE.	SECTION	COUNTY	TOTAL SHEETS	SHEET NO.
71	D3 IL 54 PP 2020-6	FORD	10	2
				CONTRACT NO. 66K04
ILLINOIS FED. AID PROJECT				

CODE NO.	ITEM	UNIT	TOTAL QUANTITY	CONSTR. CODE	
				CONTRACT MAINTENANCE	
				100% STATE ROADWAY	
				0006	RURAL
42000060	WELDED WIRE REINFORCEMENT	SQ YD	267		267
44201007	CLASS B PATCHES, TYPE II, 13 INCH	SQ YD	360		360
44201102	CLASS B PATCHES, TYPE II, 20 INCH	SQ YD	1018		1018
44201104	CLASS B PATCHES, TYPE III, 20 INCH	SQ YD	261		261
44201106	CLASS B PATCHES, TYPE IV, 20 INCH	SQ YD	29		29
44201299	DOWEL BARS 1 1/2"	EACH	2960		2960
44213200	SAW CUTS	FOOT	7588		7588
44213204	TIE BARS 3/4"	EACH	10		10
67100100	MOBILIZATION	L SUM	1		1
X7010216	TRAFFIC CONTROL AND PROTECTION, (SPECIAL)	L SUM	1		1
Z0017099	DOWEL BAR ASSEMBLY	EACH	18		18
Z0030850	TEMPORARY INFORMATION SIGNING	SQ FT	42		42



**PROPOSED TYPICAL SECTION 1**

LM. 16.96 TO LM. 22.10



**PROPOSED TYPICAL SECTION 2**

LM. 22.10 TO LM. 26.60

FILE NAME - p:\planroom\do\illinois.gov\PWIDOT\Documents\DOT\	USER NAME - MARINEJ	DESIGNED - EVAN MARINI	REVISED -	<b>STATE OF ILLINOIS DEPARTMENT OF TRANSPORTATION</b>	<b>TYPICAL SECTION</b>			F.A.P. RTE.	SECTION	COUNTY	TOTAL SHEETS	SHEET NO.
	DRAWN - EVAN MARINI	CHECKED - RON WOODSHANK	REVISED -					71	D3 IL 54 PP 2020-6	FORD	10	4
	PLOT SCALE = 3.9407' / 1 mm	DATE - 1/22/2019	REVISED -		SCALE: SHEET 1 OF 1 SHEETS STA. TO STA.			CONTRACT NO. 66K04				
	PLOT DATE = 3/26/2019	REVISED -				ILLINOIS FED. AID PROJECT						

PATCHING SCHEDULE

EASTBOUND LANE						
LOCATION	PATCH LENGTH	CLASS B		DOWEL BARS 1 1/2"	SAW CUTS	WELDED WIRE REINF.
		TYPE II 20"	TYPE III 20"			
LOG MILE	(FT)	SQ YD	SQ YD	EACH	FOOT	SQ YD
17.30	8	12		20	52	
17.30	6	9		20	48	
17.40	15		22	20	66	22
17.40	6	9		20	48	
17.40	8	12		20	52	
17.40	10	14		20	56	
17.50	6	9		20	48	
17.60	8	12		20	52	
17.60	6	9		20	48	
17.70	10	14		20	56	
17.90	6	9		20	48	
18.00	8	12		20	52	
18.20	6	9		20	48	
18.20	10	14		20	56	
18.30	15		22	20	66	22
18.40	6	9		20	48	
18.40	6	9		20	48	
18.50	6	9		20	48	
18.60	6	9		20	48	
18.80	8	12		20	52	
18.90	10	14		20	56	
18.90	6	9		20	48	
<b>TOTALS</b>		<b>215</b>	<b>44</b>	<b>440</b>	<b>1144</b>	<b>44</b>

PATCHING SCHEDULE

EASTBOUND LANE						
LOCATION	PATCH LENGTH	CLASS B		DOWEL BARS 1 1/2"	SAW CUTS	WELDED WIRE REINF.
		TYPE II 20"	TYPE III 20"			
LOG MILE	(FT)	SQ YD	SQ YD	EACH	FOOT	SQ YD
19.10	8	12		20	52	
19.30	8	12		20	52	
19.40	6	9		20	48	
19.40	6	9		20	48	
19.50	6	9		20	48	
19.60	10	14		20	56	
19.90	6	9		20	48	
19.90	10	14		20	56	
19.90	6	9		20	48	
19.90	6	9		20	48	
20.30	8	12		20	52	
20.40	12		17	20	60	17
20.50	15		22	20	66	22
20.50	6	9		20	48	
20.80	8	12		20	52	
20.80	8	12		20	52	
20.80	6	9		20	48	
21.00	6	9		20	48	
21.30	6	9		20	48	
21.40	8	12		20	52	
21.40	6	9		20	48	
21.50	6	9		20	48	
21.90	10	14		20	56	
<b>TOTALS</b>		<b>222</b>	<b>39</b>	<b>460</b>	<b>1182</b>	<b>39</b>

PATCHING SCHEDULE

WESTBOUND LANE								
LOCATION	PATCH LENGTH	CLASS B			DOWEL BARS 1 1/2"	SAW CUTS FOOT	WELDED WIRE REINF. SQ YD	TIE BARS 3/4" EACH
		TYPE II 20"	TYPE III 20"	TYPE IV 20"				
LOG MILE	(FT)	SQ YD	SQ YD	SQ YD	EACH	FOOT	SQ YD	EACH
21.9	6	9			20	48		
21.8	6	9			20	48		
21.5	12		17		20	60	17	
21.5	6	9			20	48		
21.5	10	14			20	56		
21.5	10	14			20	56		
21.2	6	9			20	48		
21.1	15		22		20	66	22	
21.1	6	9			20	48		
21.0	6	9			20	48		
20.9	6	9			20	48		
20.9	8	12			20	52		
20.8	10	14			20	56		
20.8	6	9			20	48		
20.8	8	12			20	52		
20.7	8	12			20	52		
20.7	8	12			20	52		
20.7	8	12			20	52		
20.5	6	9			20	48		
20.5	10	14			20	56		
20.4	15		22		20	66	22	
20.4	6	9			20	48		
20.2	6	9			20	48		
20.2	8	12			20	52		
20.1	6	9			20	48		
20.1	6	9			20	48		
20.0	20			29	20	76	29	10
19.9	6	9			20	48		
19.9	6	9			20	48		
19.8	15		22		20	66	22	
19.7	8	12			20	52		
19.6	6	9			20	48		
19.6	6	9			20	48		
TOTALS		293	83	29	660	1738	112	10

PATCHING SCHEDULE

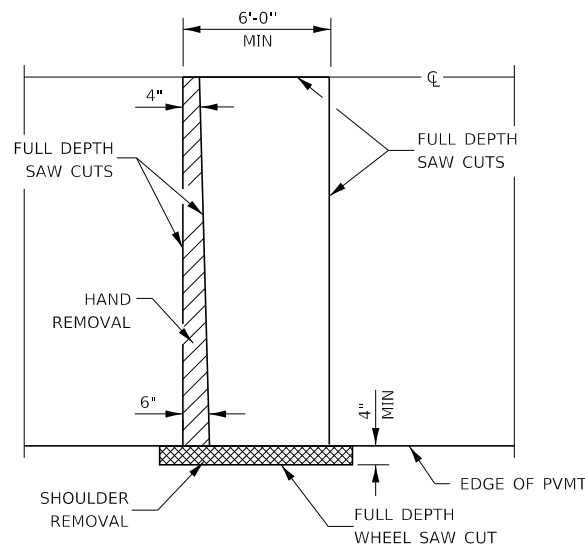
WESTBOUND LANE								
LOCATION	PATCH LENGTH	CLASS B			DOWEL BARS 1 1/2"	SAW CUTS FOOT	WELDED WIRE REINF. SQ YD	TIE BARS 3/4" EACH
		TYPE II 20"	TYPE III 20"	TYPE IV 20"				
LOG MILE	(FT)	SQ YD	SQ YD	SQ YD	EACH	FOOT	SQ YD	EACH
19.5	6	9			20	48		
19.5	6	9			20	48		
19.4	6	9			20	48		
19.4	6	9			20	48		
19.3	6	9			20	48		
19.2	6	9			20	48		
19.1	6	9			20	48		
19.0	6	9			20	48		
19.0	10	14			20	56		
18.9	12		17		20	60	17	
18.8	8	12			20	52		
18.8	12		17		20	60	17	
18.7	8	12			20	52		
18.7	6	9			20	48		
18.6	10	14			20	56		
18.5	8	12			20	52		
18.4	6	9			20	48		
18.3	10	14			20	56		
18.2	6	9			20	48		
18.0	15		22		20	66	22	
17.9	8	12			20	52		
17.9	6	9			20	48		
17.8	6	9			20	48		
17.7	6	9			20	48		
17.7	15		22		20	66	22	
17.6	6	9			20	48		
17.6	6	9			20	48		
17.6	8	12			20	52		
17.5	12		17		20	60	17	
17.4	6	9			20	48		
17.4	8	12			20	52		
17.3	6	9			20	48		
17.3	8	12			20	52		
TOTALS		288	95		660	1708	95	

PATCHING SCHEDULE

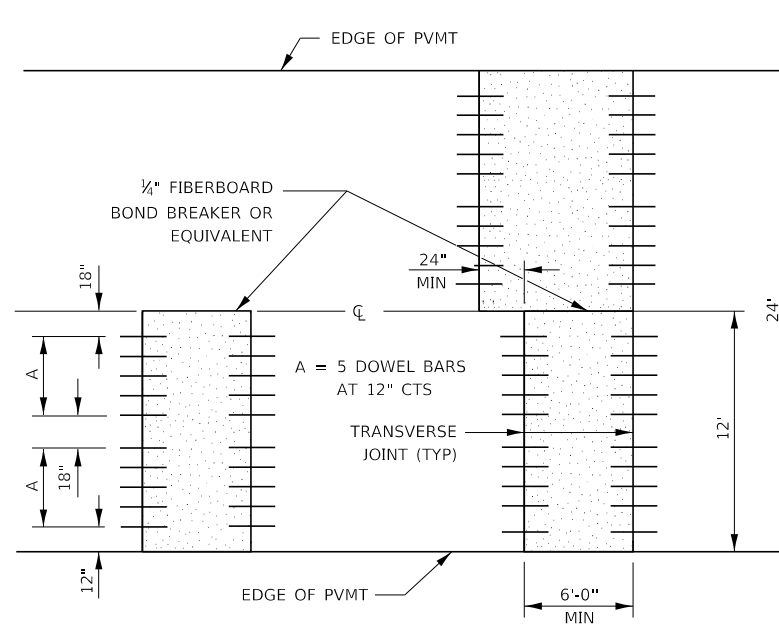
EASTBOUND LANE				
LOCATION	PATCH LENGTH	CLASS B TYPE	DOWEL BARS	SAW CUTS
		II 13"	1 1/2"	
LOG MILE	(FT)	SQ YD	EACH	FOOT
22.30	8	12	20	52
22.70	6	9	20	48
22.70	6	9	20	48
23.00	6	9	20	48
23.50	6	9	20	48
23.70	6	9	20	48
24.00	6	9	20	48
24.50	6	9	20	48
24.60	6	9	20	48
25.10	6	9	20	48
26.20	6	9	20	48
<b>TOTALS</b>		<b>102</b>	<b>220</b>	<b>532</b>

PATCHING SCHEDULE

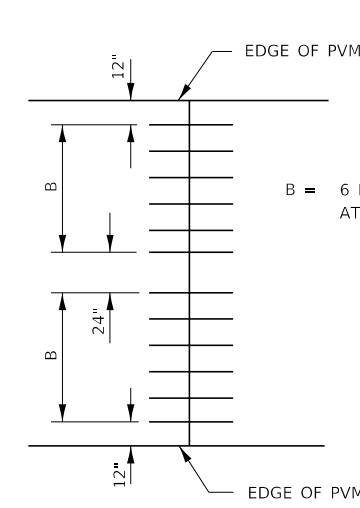
WESTBOUND LANE				
LOCATION	PATCH LENGTH	CLASS B TYPE	DOWEL BARS	SAW CUTS
		II 13"	1 1/2"	
LOG MILE	(FT)	SQ YD	EACH	FOOT
26.5	6	9	20	48
26.3	6	9	20	48
26.2	6	9	20	48
26.1	6	9	20	48
25.9	6	9	20	48
24.9	6	9	20	48
24.6	6	9	20	48
24.5	6	9	20	48
24.5	8	12	20	52
23.5	6	9	20	48
23.5	8	12	20	52
23.5	6	9	20	48
23.4	6	9	20	48
23.2	6	9	20	48
23.2	10	14	20	56
23.1	10	14	20	56
23.1	6	9	20	48
22.9	6	9	20	48
22.9	6	9	20	48
22.7	6	9	20	48
22.7	6	9	20	48
22.4	6	9	20	48
22.4	8	12	20	52
22.2	6	9	20	48
22.2	10	14	20	56
22.1	6	9	20	48
<b>TOTALS</b>		<b>258</b>	<b>520</b>	<b>1284</b>



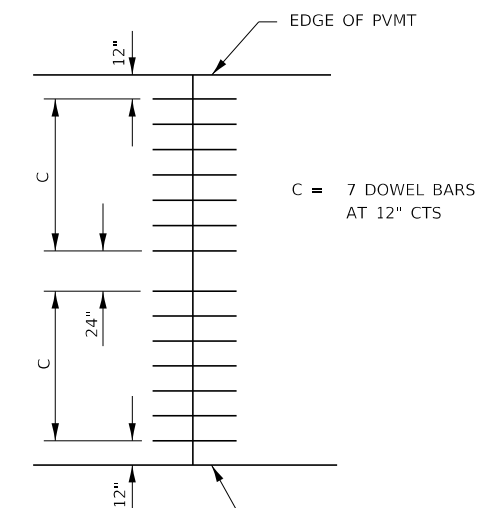
**PAVEMENT SAWING DETAIL**  
(HMA SHOULDER)



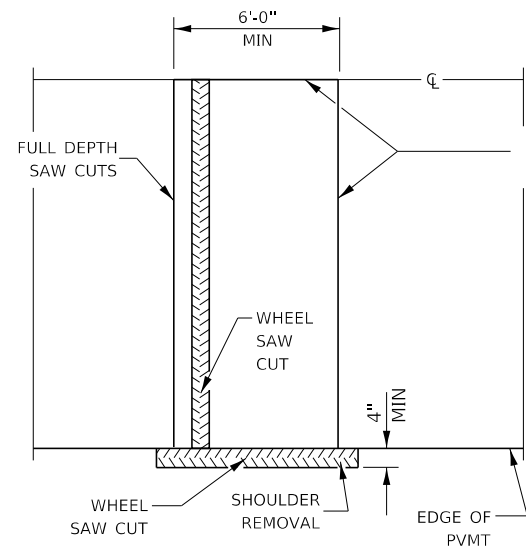
**12' WIDE LANES**



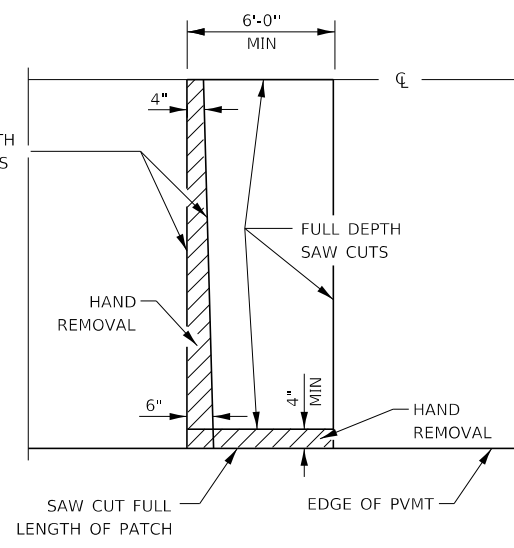
**14' WIDE RAMP**



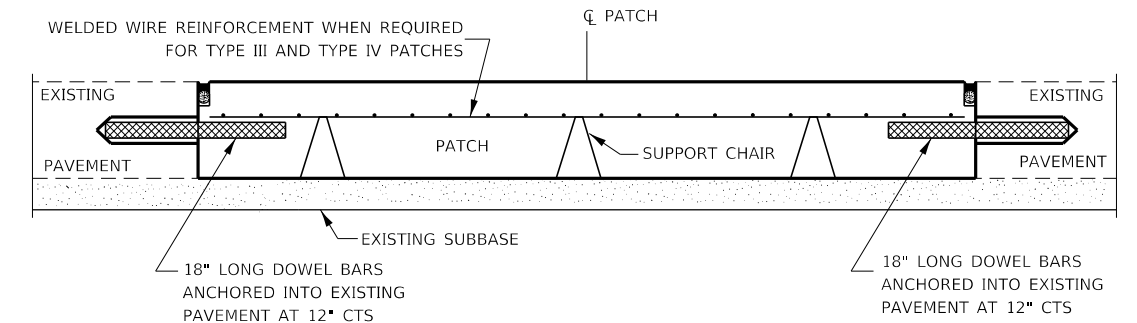
**16' WIDE RAMP**



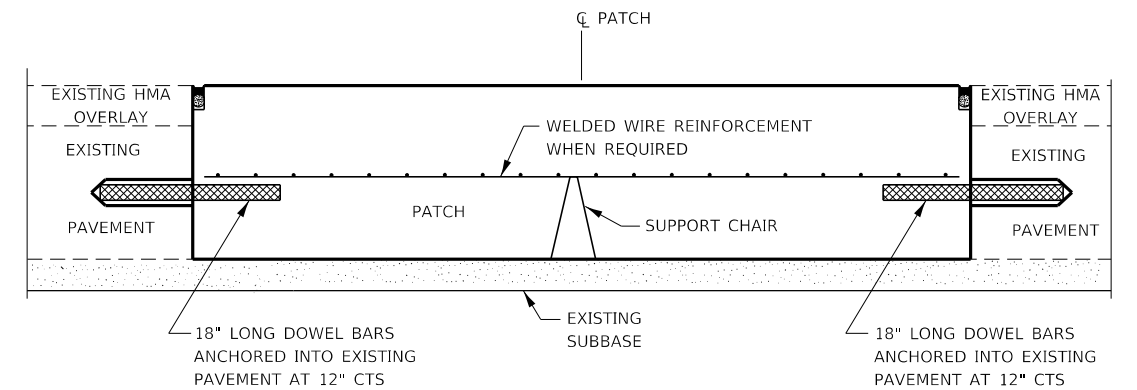
**ALTERNATE SAWING DETAIL**  
(HMA SHOULDER)



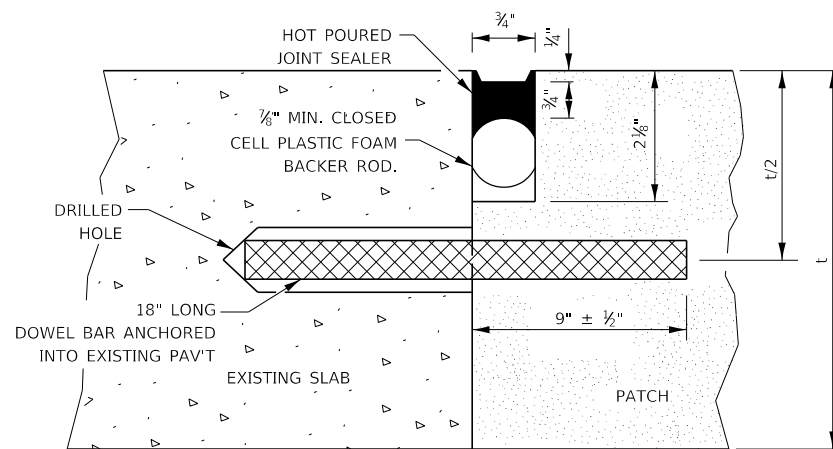
**PAVEMENT SAWING DETAIL**  
(PCC SHOULDER)



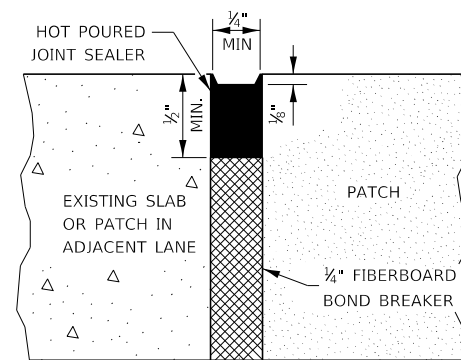
**PATCHING WITHOUT HMA OVERLAY**



**PATCHING WITH HMA OVERLAY**



**TRANSVERSE JOINT**



**CENTERLINE JOINT**

DOWEL BAR TABLE		
PAVEMENT THICKNESS	DOWEL BAR DIAMETER	HOLE DIAMETER
8" OR GREATER	1 1/2"	1 3/8"
7" THRU 7.99"	1 1/4"	1 3/8"
LESS THAN 7"	1"	1 1/8"

**GENERAL NOTES**

THE TRANSVERSE JOINTS FOR CLASS B PATCHES SHALL ALIGN WITH JOINTS OR CRACKS IN THE ADJACENT LANE WHENEVER POSSIBLE.

SEE STANDARD 420701 FOR DETAILS OF PAVEMENT WELDED WIRE REINFORCEMENT.

MODEL: Default; FILE NAME: pcc\pavement\illinois\gov\pww\DOT\Documents\IDOT\_Offices\District\_3\Projects\3166\K04\CADD\04\66K04-cover.dgn

USER NAME = MARINIEJ	DESIGNED - EVAN MARINI	REVISED -
	DRAWN - EVAN MARINI	REVISED -
PLOT SCALE = 3.9346 1/1 mm	CHECKED - RON WOODSHANK	REVISED -
PLOT DATE = 3/26/2019	DATE - 1/22/2019	REVISED -

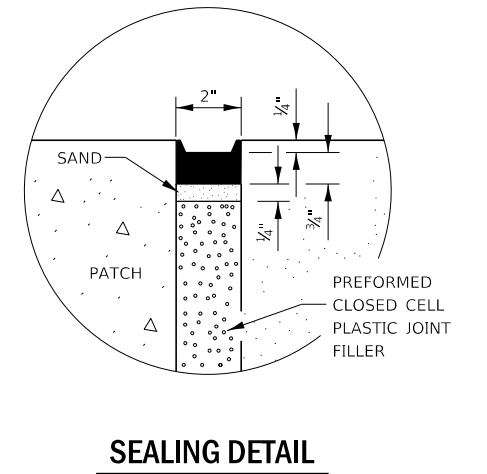
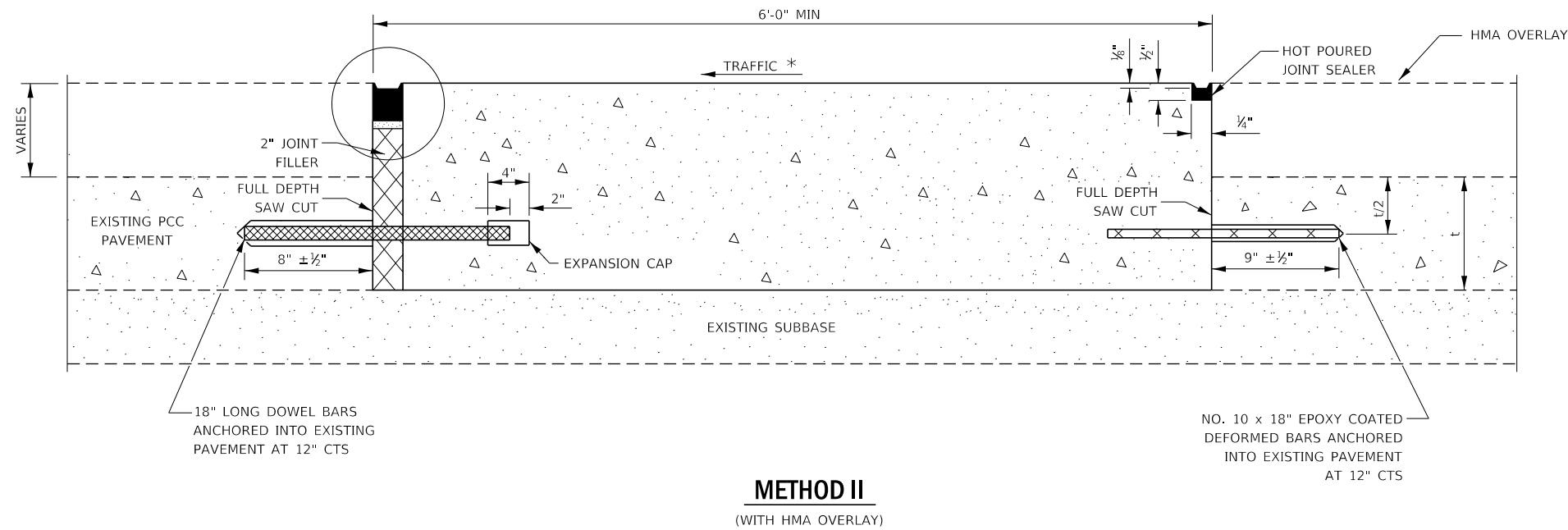
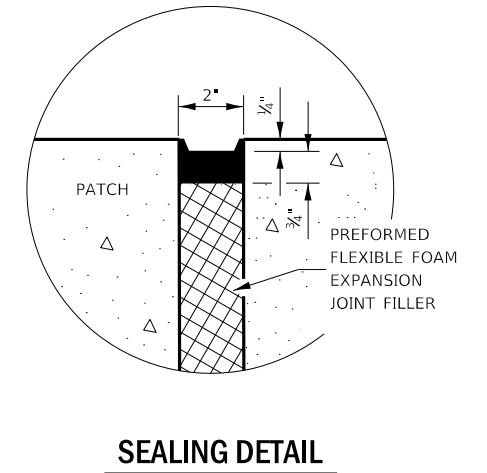
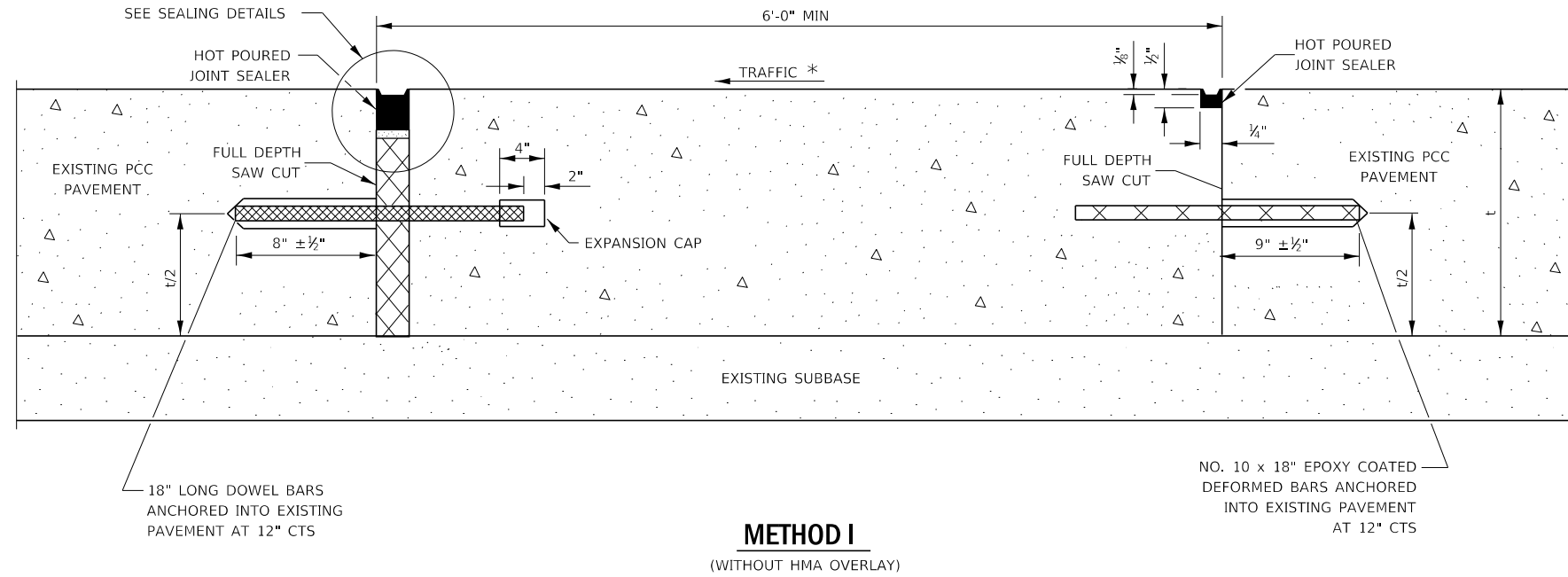
**STATE OF ILLINOIS  
DEPARTMENT OF TRANSPORTATION**

**CLASS B PATCHING DETAILS**

SCALE: SHEET 1 OF 2 SHEETS STA. TO STA.

F.A.P. RTE.	SECTION	COUNTY	TOTAL SHEETS	SHEET NO.
71	D3 IL 54 PP 2020-6	FORD	10	8
CONTRACT NO. 66K04			ILLINOIS FED. AID PROJECT	





**NOTE**

\* WHEN RE-ESTABLISHING A TRANSVERSE EXPANSION JOINT ON A TWO-WAY ROAD, REVERSE THE ORIENTATION OF THE DOWEL BARS WITH RESPECT TO TRAFFIC FOR ONE OF THE PATCHES SUCH THAT THE JOINT WILL BE CONTINUOUS ACROSS BOTH LANES.

MODEL: Default  
FILE NAME: p:\m\3\blanroom\dot\ill\m\k\p\c\w\DOT\Documents\DOT - Offices\District 3\Projects\0366K04\CADD\066K04-cover.dgn

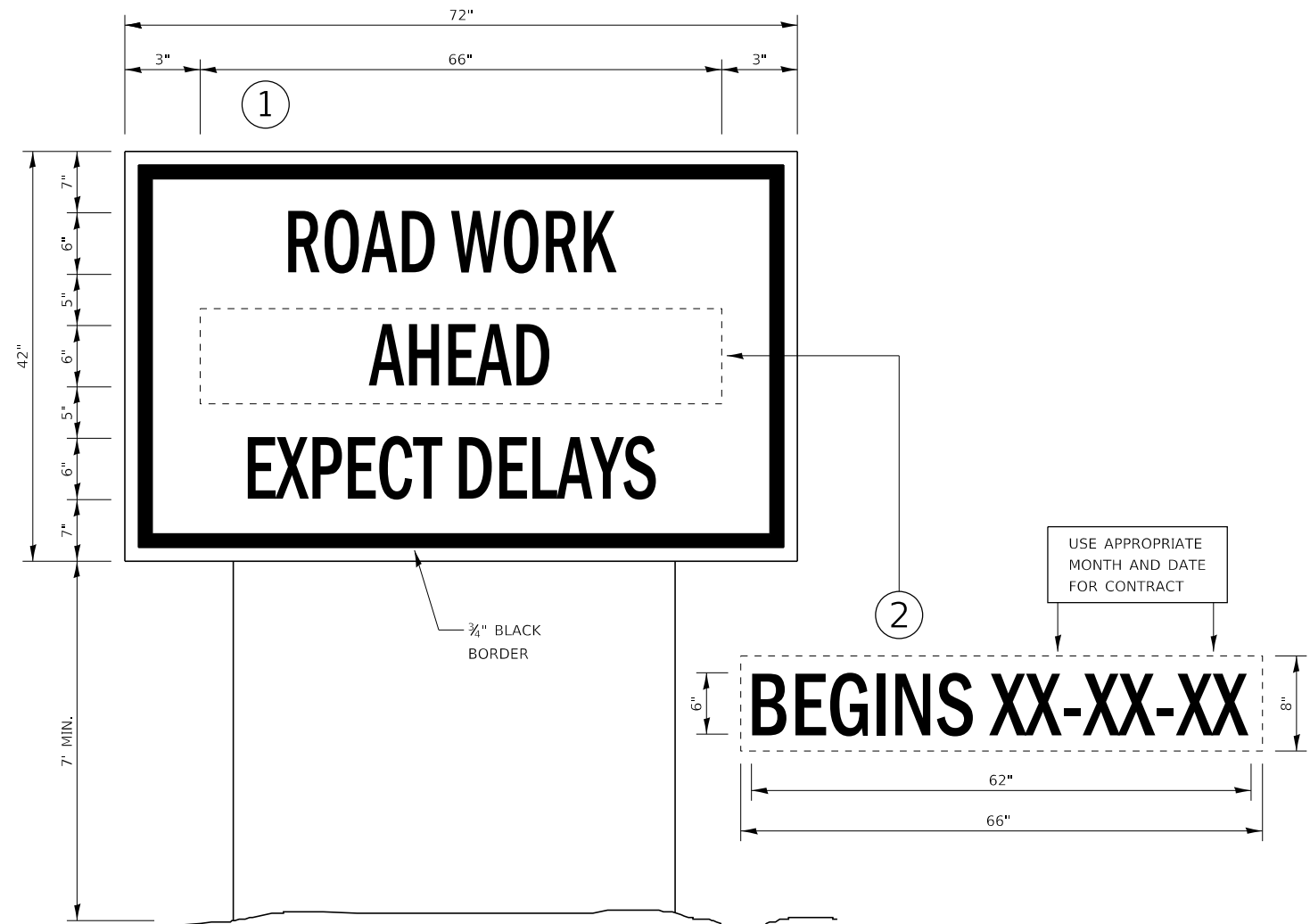
USER NAME = MARINEJ	DESIGNED - EVAN MARINI	REVISED -
	DRAWN - EVAN MARINI	REVISED -
PLOT SCALE = 3.9559' / mm	CHECKED - RON WOODSHANK	REVISED -
PLOT DATE = 3/26/2019	DATE - 1/22/2019	REVISED -

STATE OF ILLINOIS  
DEPARTMENT OF TRANSPORTATION

**CLASS B PATCHING DETAILS**

SCALE: SHEET 2 OF 2 SHEETS STA. TO STA.

F.A.P RTE.	SECTION	COUNTY	TOTAL SHEETS	SHEET NO.
71	D3 IL 54 PP 2020-6	FORD	10	9
CONTRACT NO. 66K04				
ILLINOIS FED. AID PROJECT				



### TEMPORARY INFORMATION SIGNING

**NOTES:**

1. USE 6" D BLACK LETTERING ON FLUORESCENT ORANGE BACKGROUND.
2. ERECT SIGNS AT LOCATIONS IN ADVANCE OF THE "ROAD CONSTRUCTION AHEAD" SIGNS AS DIRECTED BY THE ENGINEER.
3. ERECT SIGN ① WITH INSTALLED PANEL ② A MINIMUM OF ONE WEEK PRIOR TO THE START OF THE LANE CLOSURE.
4. REMOVE PANEL ② ON THAT DATE.
5. SEE SPECIAL PROVISION "TEMPORARY INFORMATION SIGNING" FOR ADDITIONAL INFORMATION.
6. WILL BE PAID FOR PER SQ FT AS "TEMPORARY INFORMATION SIGNING". EACH SIGN = 21 SQ FT AND THE DATE PANEL ② WILL NOT BE MEASURED SEPARATELY FOR PAYMENT.

FILE NAME =	USER NAME = MARINIEJ	DESIGNED - EVAN MARINI	REVISED -	<b>STATE OF ILLINOIS DEPARTMENT OF TRANSPORTATION</b>	<b>DETAILS</b>	F.A.P RTE.	SECTION	COUNTY	TOTAL SHEETS	SHEET NO.	
pww\planroom\dtd\ilinois.gov\PWIDOT\Documents\DOT	Office\District 3\Projects\D366K04\CADData\66K04-cover.dgn	DRAWN - EVAN MARINI	REVISED -			71	D3 IL 54 PP 2020-6	FORD	10	10	
Default	PLOT SCALE = 3,9478' / mm	CHECKED - RON WOODSHANK	REVISED -			CONTRACT NO. 66K04					
	PLOT DATE = 3/11/2019	DATE - 1/22/2019	REVISED -			ILLINOIS   FED. AID PROJECT					

SCALE: SHEET 1 OF 1 SHEETS STA. TO STA.