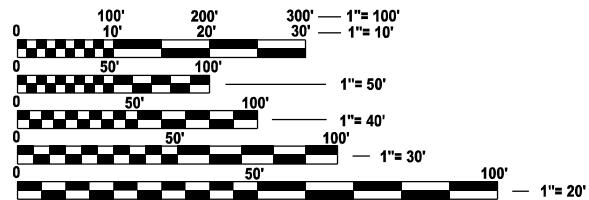


INDEX OF SHEETS

- 1 . COVER SHEET
- 2 . GENERAL NOTES
- 3 - 4 . SUMMARY OF QUANTITIES
- 5 . TYPICAL SECTIONS
- 6 . SCHEDULES - JOINT AND POTHOLE REPAIR
- 7 - 8 . SCHEDULES PATCHING NORTHBOUND LANES
- 9 - 10 . SCHEDULES PATCHING SOUTHBOUND LANES
- 11 - 12 . SCHEDULES PAVEMENT MARKING
- 13 . TRAFFIC CONTROL AND PROTECTION, STANDARD 701400
- 14 - 16 . CLASS A PATCHING DETAILS
- 17 - 22 . TYPICAL PAVEMENT MARKING DETAILS

HIGHWAY STANDARDS

- 000001-08 STANDARD SYMBOLS, ABBREVIATIONS AND PATTERNS
- 001001-02 AREAS OF REINFORCEMENT BARS
- 001006 DECIMAL OF AN INCH AND OF A FOOT
- 420001-10 PAVEMENT JOINTS
- 701101-05 OFF-ROAD OPERATIONS, MULTILANE, 15' TO 24" FROM PAVEMENT EDGE
- 701106-02 OFF-ROAD OPERATIONS, MULTILANE, MORE THAN 15' AWAY
- 701401-13 LANE CLOSURE, FREEWAY/EXPRESSWAY
- 701406-13 LANE CLOSURE, FREEWAY/EXPRESSWAY, DAY OPERATIONS ONLY
- 701411-09 LANE CLOSURE, MULTILANE, AT ENTRANCE OR EXIT RAMP
FOR SPEEDS ≥ 45 MPH
- 701426-09 LANE CLOSURE, MULTILANE INTERMITTENT OR MOVING OPERATION,
FOR SPEEDS ≥ 45 MPH
- 701428-01 TRAFFIC CONTROL, SETUP AND REMOVAL, FREEWAY/EXPRESSWAY
- 701901-09 TRAFFIC CONTROL DEVICES



FULL SIZE PLANS HAVE BEEN PREPARED USING STANDARD ENGINEERING SCALES. REDUCED SIZED PLANS WILL NOT CONFORM TO STANDARD SCALES. IN MAKING MEASUREMENTS ON REDUCED PLANS, THE ABOVE SCALES MAY BE USED.

J.U.L.I.E.
JOINT UTILITY LOCATION INFORMATION FOR EXCAVATION
1-800-892-0123
OR 811

PROJECT ENGINEER YOGESH PATEL P.E.
UNIT CHIEF RON WOODSHANK
DISTRICT NO. 3 (815) 434-6131
CONTRACT NO. 66P38

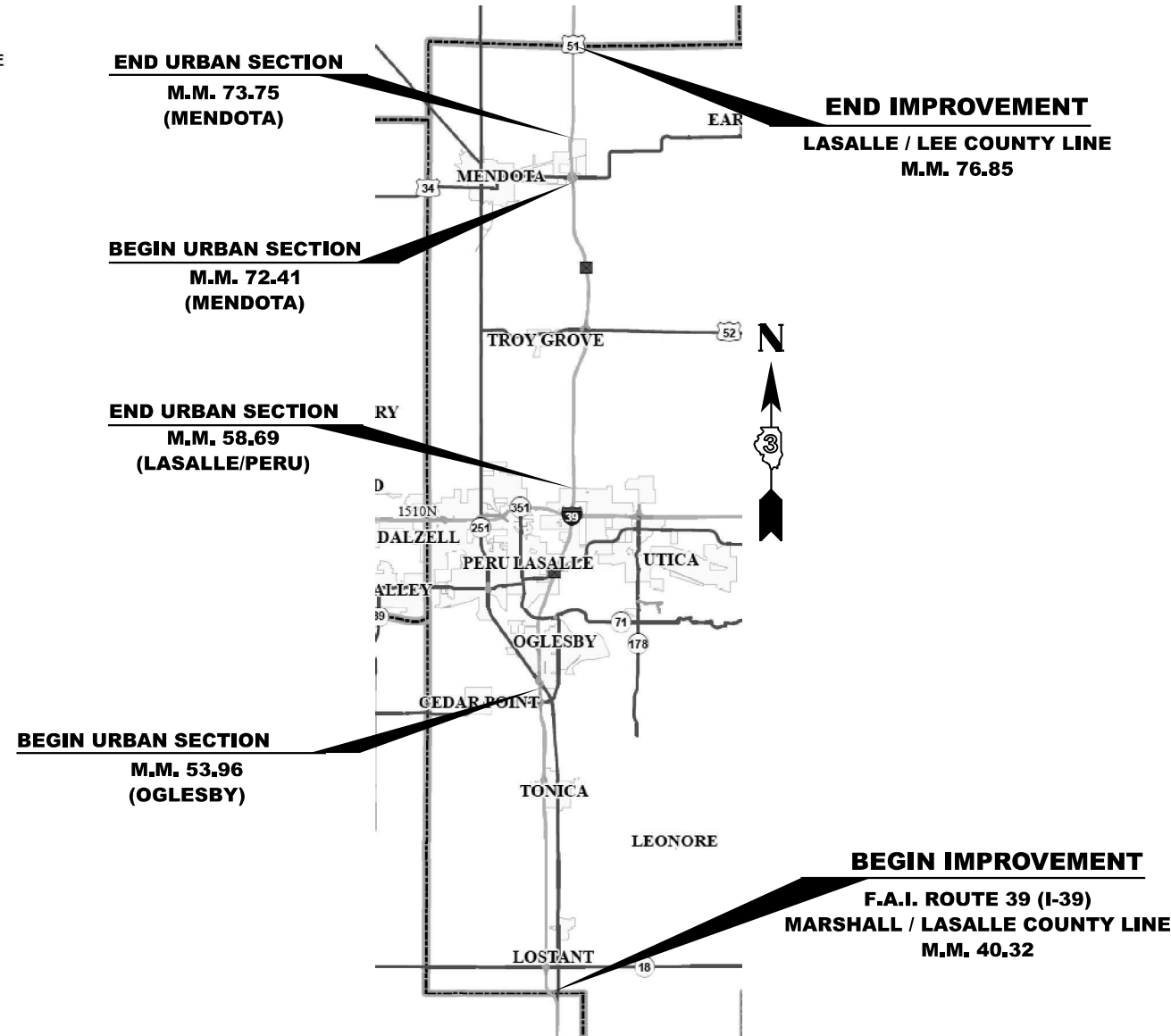
STATE OF ILLINOIS
DEPARTMENT OF TRANSPORTATION

PROPOSED
HIGHWAY PLANS

F.A.I. ROUTE 39 (I-39)
SECTION 50(1-8)PP-18
CLASS A PATCHING AND
JOINT / POTHOLE REPAIR

LASALLE COUNTY

C-93-089-24



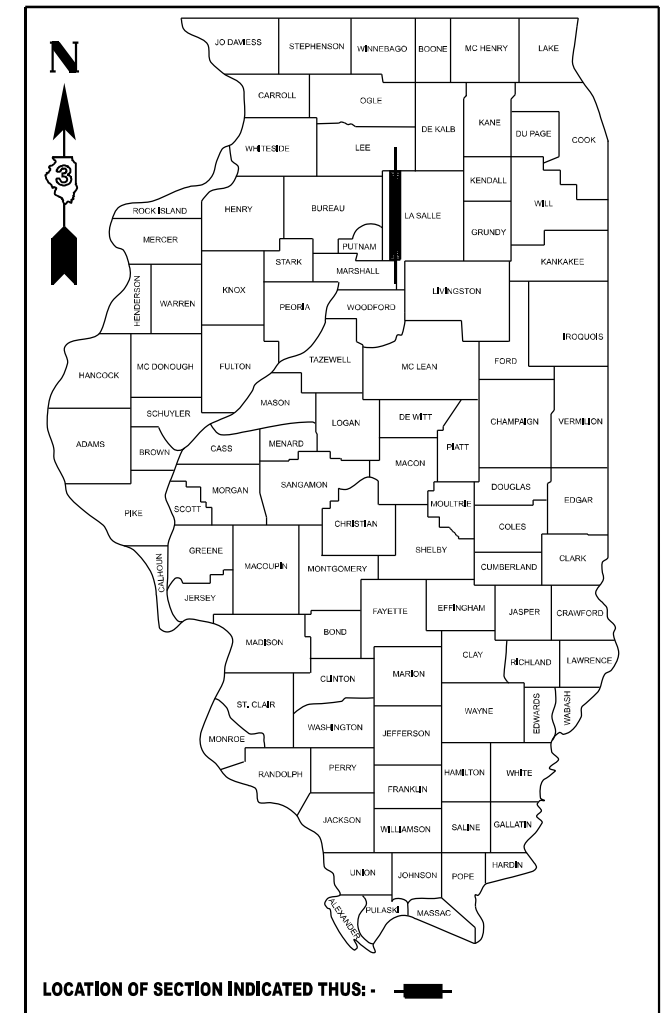
NBL - GROSS LENGTH = 192,878 FT. = 36.53 MILE
NBL - NET LENGTH = 611 FT = 0.12 MILE

SBL - GROSS LENGTH = 192,878 FT. = 36.53 MILE
SBL - NET LENGTH = 643 FT = 0.12 MILE

F.A.I. RTE.	SECTION	COUNTY	TOTAL SHEETS	SHEET NO.
39	50(1-8)PP-18	LASALLE	17*	1
		ILLINOIS	CONTRACT NO. 66P38	

* 17 + 5 = 22 TOTAL SHEETS

D-93-052-24



FUNCTIONAL CLASSIFICATION
RURAL / URBAN INTERSTATE
F.A.I. ROUTE 39 (I-39)
2021 ADT = 19800
P.V. 69.2 % S.U. 25.8 % M.U. 5.0 %

STATE OF ILLINOIS
DEPARTMENT OF TRANSPORTATION

SUBMITTED March 26, 2024
Trisha Thompson REGIONAL ENGINEER

May 10, 2024 *[Signature]*
ENGINEER OF DESIGN AND ENVIRONMENT

May 10, 2024 *[Signature]*
DIRECTOR OF HIGHWAYS PROJECT IMPLEMENTATION

PRINTED BY THE AUTHORITY
OF THE STATE OF ILLINOIS

GENERAL NOTES

ALL EXCAVATED MATERIAL, WHICH INCLUDES DIGGING OR GRADING OF ANY SOIL OR FILL MATERIAL, WITH THE EXCEPTION OF AGGREGATE FILLS, HOT-MIX ASPHALT OR CONCRETE MATERIALS MUST REMAIN ON SITE AND MUST BE INCORPORATED WITHIN THE IDOT RIGHT OF WAY.

COMMITMENTS

NONE

HMA MIXTURE REQUIREMENT TABLE	
LOCATIONS:	I-39 ENTIRE PROJECT
MIXTURE USE(S):	POTHOLE PATCHING
BINDER GRADE (PG):	PG64-22
DESIGN AIR VOIDS:	4.0% @ N70
MIXTURE COMPOSITION: (MIXTURE GRADATION)	IL 9.5
FRICTION AGGREGATE:	MIX "D"
MIXTURE WEIGHT:	112.0 LB/SY/IN
QUALITY MANAGEMENT PROGRAM:	QCQA
SUBLOT SIZE:	N/A
DENSITY TEST METHOD:	SATISFACTION OF ENGINEER

**STATE OF ILLINOIS
DEPARTMENT OF TRANSPORTATION
DISTRICT THREE
AS BUILT INFORMATION**

SUPERVISING CONSTRUCTION FIELD ENGINEER

RESIDENT ENGINEER / TECHNICIAN

**START & END DATES
OF CONSTRUCTION:**

INSPECTORS:

MODEL: Default
FILE NAME: c:\pwworking\woodshank\10270654\66P38.dgn

USER NAME = ronald.woodshank	DESIGNED - RW	REVISED -	STATE OF ILLINOIS DEPARTMENT OF TRANSPORTATION	GENERAL NOTES	F.A.I. RTE.	SECTION	COUNTY	TOTAL SHEETS	SHEET NO.	
DRAWN - RW	CHECKED - YP	REVISED -			39	50(1-8)PP-18	LASALLE	17	2	
PLOT SCALE = \$SCALE\$	DATE - 1/16/2024	REVISED -			CONTRACT NO. 66P38					
PLOT DATE = 3/2/2024					SCALE:	SHEET 1 OF 1 SHEETS	STA.	TO STA.	ILLINOIS FED. AID PROJECT	

CODE NO.	ITEM	UNIT	TOTAL QUANTITY	CONSTRUCTION CODE	
				100% STATE	100% STATE
				ROADWAY	ROADWAY
				0006 RURAL	0006 URBAN
40600290	BITUMINOUS MATERIALS (TACK COAT)	POUND	1639	1367	272
44200553	CLASS A PATCHES, TYPE II, 10 INCH	SQ YD	968	686	282
44200557	CLASS A PATCHES, TYPE III, 10 INCH	SQ YD	235	120	115
44200559	CLASS A PATCHES, TYPE IV, 10 INCH	SQ YD	983	829	154
44213000	PATCHING REINFORCEMENT	SQ YD	2243	1692	551
44213200	SAW CUTS	FOOT	6846	5058	1788
67100100	MOBILIZATION	L SUM	1	0.5	0.5
70100420	TRAFFIC CONTROL AND PROTECTION, STANDARD 701411	EACH	40	20	20
70100700	TRAFFIC CONTROL AND PROTECTION, STANDARD 701406	L SUM	1	0.5	0.5
70100800	TRAFFIC CONTROL AND PROTECTION, STANDARD 701401	L SUM	1	0.5	0.5
70103815	TRAFFIC CONTROL SURVEILLANCE	CAL DA	23	23	0
70107025	CHANGEABLE MESSAGE SIGN	CAL DA	28	14	14
* 78009004	MODIFIED URETHANE PAVEMENT MARKING - LINE 4"	FOOT	1681	1267	414
* 78009006	MODIFIED URETHANE PAVEMENT MARKING - LINE 6"	FOOT	2130	1610	520

*SPECIALITY ITEMS

MODEL: Default
FILE NAME: c:\pwworkspace\woodshank\10070654\66P38.dgn

USER NAME = ronald.woodshank	DESIGNED - RW	REVISED -	STATE OF ILLINOIS DEPARTMENT OF TRANSPORTATION	SUMMARY OF QUANTITIES		F.A.I. RTE.	SECTION	COUNTY	TOTAL SHEETS	SHEET NO.
DRAWN - RW	REVISIED -	39				50(1-8)PP-18	LASALLE	17	3	
PLOT SCALE = \$SCALE\$	CHECKED - YP	REVISED -		SCALE:		SHEET 1 OF 2 SHEETS		STA.	TO STA.	
PLOT DATE = 3/2/2024	DATE - 1/16/2024	REVISED -						ILLINOIS FED. AID PROJECT		CONTRACT NO. 66P38

CODE NO.	ITEM	UNIT	TOTAL QUANTITY	CONSTRUCTION CODE	
				100% STATE	100% STATE
				ROADWAY	ROADWAY
				0006 RURAL	0006 URBAN
Z0004910	HOT-MIX ASPHALT FOR PATCHING POTHOLES (HOT MIX)	TON	51	43	8
Z0018911	DRILL AND GROUT #6 TIE BARS	EACH	261	201	60
Z0018913	DRILL AND GROUT #8 TIE BARS	EACH	3648	2520	1128

MODEL: Default
FILE NAME: c:\pw_work\pw1610\woodshank\1607065-166P38.dgn

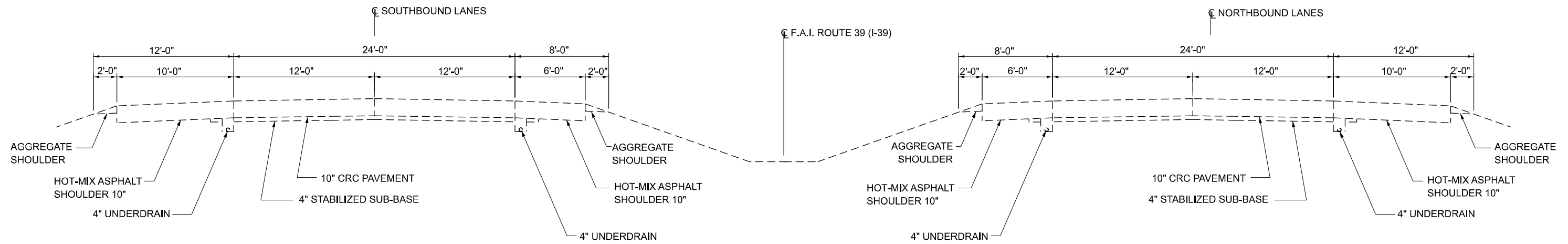
USER NAME = ronald.woodshank	DESIGNED - RW	REVISED -
	DRAWN - RW	REVISED -
PLOT SCALE = \$SCALE\$	CHECKED - YP	REVISED -
PLOT DATE = 3/2/2024	DATE - 1/16/2024	REVISED -

**STATE OF ILLINOIS
DEPARTMENT OF TRANSPORTATION**

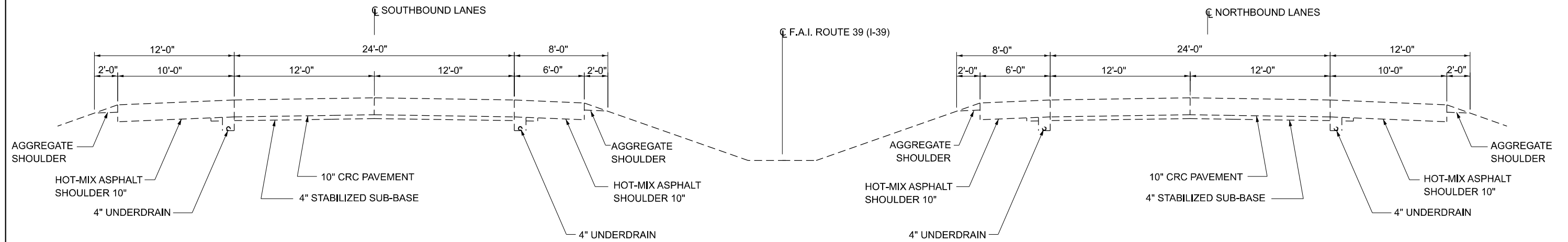
SUMMARY OF QUANTITIES

SCALE: SHEET 2 OF 2 SHEETS STA. TO STA.

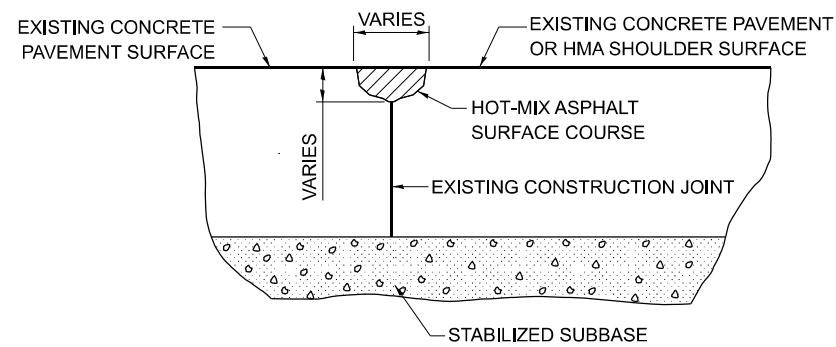
F.A.I. RTE.	SECTION	COUNTY	TOTAL SHEETS	SHEET NO.
39	50(1-8)PP-18	LASALLE	17	4
CONTRACT NO. 66P38				
ILLINOIS FED. AID PROJECT				



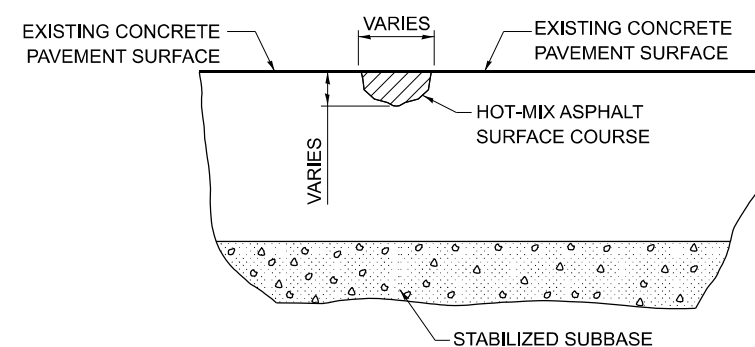
TYPICAL SECTION
M.M. 40.32 TO M.M. 52.20



TYPICAL SECTION
M.M. 52.20 TO M.M. 76.85



JOINT REPAIR DETAIL



POTHOLE REPAIR DETAIL

MODEL: Default
FILE NAME: c:\pwwork\woodshank\1007065466P38.dgn

USER NAME = ronald.woodshank	DESIGNED - RW	REVISED -
	DRAWN - RW	REVISED -
PLOT SCALE = \$SCALE\$	CHECKED - YP	REVISED -
PLOT DATE = 3/2/2024	DATE - 1/16/2024	REVISED -

STATE OF ILLINOIS
DEPARTMENT OF TRANSPORTATION

TYPICAL SECTIONS
FOR PAVEMENT PATCHING

SCALE: SHEET 1 OF 2 SHEETS STA. TO STA.

F.A.I. RTE.	SECTION	COUNTY	TOTAL SHEETS	SHEET NO.
39	50(1-8)PP-18	LASALLE	17	5
CONTRACT NO. 66P38				
ILLINOIS FED. AID PROJECT				

SCHEDULE - CENTERLINE REPAIR

LOCATION				CENTERLINE LENGTH	BITUMINOIS MATERIALS (TACK COAT)	HOT-MIX ASPHALT FOR PATCHING POTHoles (HOT MIX)
NORTHBOUND LANES						
STA.	TO	STA.	LANE	FEET	POUND	TON
RURAL						
40.32	TO	53.96	NBL	72019	612	19
URBAN						
53.96	TO	58.69	NBL	24974	212	7
RURAL						
58.69	TO	72.41	NBL	72442	616	19
URBAN						
72.41	TO	73.75	NBL	7075	60	2
RURAL						
73.75	TO	76.85	NBL	16368	139	4
RURAL SUBTOTAL					1367	43
URBAN SUBTOTAL					272	8
TOTAL					1639	51

"SEE SPECIAL PROVISION FOR PLACEMENT REQUIREMENTS"

MODEL: Default
FILE NAME: c:\pwwork\woodshank\1007065466P38.dgn

USER NAME = ronald.woodshank	DESIGNED - RW	REVISED -	STATE OF ILLINOIS DEPARTMENT OF TRANSPORTATION	SCHEDULES SHOULDER RECONSTRUCTION	F.A.I. RTE.	SECTION	COUNTY	TOTAL SHEETS	SHEET NO.	
	DRAWN - RW	REVISED -			39	50(1-8)PP-18	LASALLE	17	6	
PLOT SCALE = \$SCALE\$	CHECKED - YP	REVISED -			CONTRACT NO. 66P38					
PLOT DATE = 3/2/2024	DATE - 1/16/2024	REVISED -			SCALE:	SHEET 1 OF 1 SHEETS	STA.	TO STA.	ILLINOIS	FED. AID PROJECT

PATCHING SCHEDULES - NORTHBOUND LANES

LOCATION	PATCH LENGTH	PATCH WIDTH	PASSING LANE							DRIVING LANE							
			CLASS A PATCHING			PATCH REINFORCEMENT	SAW CUT	DRILL AND GROUT #6 TIE BARS	DRILL AND GROUT #8 TIE BARS	CLASS A PATCHING			PATCH REINFORCEMENT	SAW CUT	DRILL AND GROUT #6 TIE BARS	DRILL AND GROUT #8 TIE BARS	
			TYPE II 10"	TYPE III 10"	TYPE IV 10"					TYPE II 10"	TYPE III 10"	TYPE IV 10"					
MILE MARKER	FEET	FEET	SQ YD	SQ YD	SQ YD	SQ YD	FOOT	EACH	EACH	SQ YD	SQ YD	SQ YD	SQ YD	FOOT	EACH	EACH	
RURAL																	
42.3	12	12									16		16	48		24	
42.3	6	12								8			8	36		24	
46.4	10	12								13			13	44		24	
46.7	6	12								8			8	36		24	
46.7	6	12								8			8	36		24	
47.0	6	12								8			8	36		24	
47.1	10	12								13			13	44		24	
47.3	6	12								8			8	36		24	
47.4	22	12										29	29	68	14	24	
47.7	6	12								8			8	36		24	
47.7	6	12								8			8	36		24	
48.0	6	12								8			8	36		24	
48.1	10	12								13			13	44		24	
48.4	30	12										40	40	84	20	24	
48.5	12	12									16		16	48		24	
48.6	22	12										29	29	68	14	24	
48.6	12	12									16		16	48		24	
51.6	8	12								11			11	40		24	
52.3	40	12										53	53	104	26	24	
URBAN																	
54.1	30	12			40	40	84	20	24				33	33	74	16	24
54.3	25	12											8	8	36		24
54.3	6	12											27	27	64	12	24
54.4	20	12															24
56.2	6	12	8			8	36		24								24
56.2	6	12	8			8	36		24								24
56.4	6	12	8			8	36		24								24
56.7	6	12	8			8	36		24								24
56.7	6	12	8			8	36		24								24
56.8	8	12								11			11	40			24
56.8	10	12								13			13	44			24
57.4	8	12								11			11	40			24
57.8	15	12									20		20	54			24
58.2	6	12								8			8	36			24
58.3	6	12	8			8	36		24								24
RURAL																	
60.0	6	12								8			8	36			24
62.1	6	12								8			8	36			24
66.7	6	12								8			8	36			24
66.8	6	12								8			8	36			24
67.0	15	12									20		20	54			24
67.0	6	12								8			8	36			24
68.5	6	12								8			8	36			24
68.5	6	12								8			8	36			24
69.4	6	12								8			8	36			24

MODEL: Default
FILE NAME: C:\pwworking\woodshank\10070654\66P38.dgn

USER NAME = ronald.woodshank	DESIGNED - RW	REVISED -
	DRAWN - RW	REVISED -
PLOT SCALE = \$\$CALES	CHECKED - YP	REVISED -
PLOT DATE = 3/2/2024	DATE - 1/16/2024	REVISED -

**STATE OF ILLINOIS
DEPARTMENT OF TRANSPORTATION**

**SCHEDULES - PATCHING
NORTHBOUND LANES**

SCALE: SHEET 1 OF 2 SHEETS STA. TO STA.

F.A.I. RTE.	SECTION	COUNTY	TOTAL SHEETS	SHEET NO.
39	50(1-8)PP-18	LASALLE	17	7
CONTRACT NO. 66P38				
ILLINOIS FED. AID PROJECT				

PATCHING SCHEDULES - NORTHBOUND LANES

LOCATION	PATCH LENGTH	PATCH WIDTH	PASSING LANE							DRIVING LANE						
			CLASS A PATCHING			PATCH REINFORCEMENT	SAW CUT	DRILL AND GROUT #6 TIE BARS	DRILL AND GROUT #8 TIE BARS	CLASS A PATCHING			PATCH REINFORCEMENT	SAW CUT	DRILL AND GROUT #6 TIE BARS	DRILL AND GROUT #8 TIE BARS
			TYPE II 10"	TYPE III 10"	TYPE IV 10"					TYPE II 10"	TYPE III 10"	TYPE IV 10"				
MILE MARKER	FEET	FEET	SQ YD	SQ YD	SQ YD	SQ YD	FOOT	EACH	EACH	SQ YD	SQ YD	SQ YD	SQ YD	FOOT	EACH	EACH
RURAL																
69.6	6	12								8			8	36		24
69.6	6	12								8			8	36		24
69.7	6	12								8			8	36		24
69.7	6	12								8			8	36		24
71.0	6	12								8			8	36		24
URBAN																
72.3	6	12								8			8	36		24
72.4	6	12								8			8	36		24
72.8	6	12								8			8	36		24
72.9	6	12								8			8	36		24
73.0	8	12								11			11	40		24
73.3	12	12									16		16	48		24
RURAL																
73.5	10	12								13			13	44		24
73.7	6	12								8			8	36		24
74.2	6	12								8			8	36		24
75.0	6	12								8			8	36		24
75.0	6	12								8			8	36		24
75.1	6	12								8			8	36		24
75.1	6	12								8			8	36		24
75.3	6	12								8			8	36		24
75.5	6	12								8			8	36		24
75.8	10	12								13			13	44		24
76.1	6	12								8			8	36		24
RURAL SUBTOTALS	403									316	68	151	535	1862	37	1056
URBAN SUBTOTALS	208		48		40	88	300	20	168	94	36	60	190	620	28	504
NORTHBOUND TOTALS	611		48		40	88	300	20	168	410	104	211	725	2482	65	1560

MODEL: Default
FILE NAME: c:\pwworking\woodshank\10070654\66P38.dgn

USER NAME = ronald.woodshank	DESIGNED - RW	REVISED -
DRAWN - RW	REVISIONS -	
PLOT SCALE = \$SCALE\$	CHECKED - YP	REVISED -
PLOT DATE = 3/2/2024	DATE - 1/16/2024	REVISED -

**STATE OF ILLINOIS
DEPARTMENT OF TRANSPORTATION**

**SCHEDULES - PATCHING
NORTHBOUND LANES**

SCALE: SHEET 2 OF 2 SHEETS STA. TO STA.

F.A.I. RTE.	SECTION	COUNTY	TOTAL SHEETS	SHEET NO.
39	50(1-8)PP-18	LASALLE	17	8
CONTRACT NO. 66P38				
ILLINOIS FED. AID PROJECT				

PATCHING SCHEDULES - SOUTHBOUND LANES

LOCATION	PATCH LENGTH	PATCH WIDTH	PASSING LANE							DRIVING LANE						
			CLASS A PATCHING			PATCH REINFORCEMENT	SAW CUT	DRILL AND GROUT #6 TIE BARS	DRILL AND GROUT #8 TIE BARS	CLASS A PATCHING			PATCH REINFORCEMENT	SAW CUT	DRILL AND GROUT #6 TIE BARS	DRILL AND GROUT #8 TIE BARS
			TYPE II 10"	TYPE III 10"	TYPE IV 10"					TYPE II 10"	TYPE III 10"	TYPE IV 10"				
MILE MARKER	FEET	FEET	SQ YD	SQ YD	SQ YD	SQ YD	FOOT	EACH	EACH	SQ YD	SQ YD	SQ YD	SQ YD	FOOT	EACH	EACH
RURAL																
76.0	6	12	8			8	36		24	8			8	36		24
76.0	6	12								8			8	36		24
75.3	12	12									16		16	48		24
74.4	6	12								8			8	36		24
74.4	10	12								13			13	44		24
74.3	10	12								13			13	44		24
74.3	12	12									16		16	48		24
74.3	10	12									20		20	54		24
74.3	15	12								8			8	36		24
74.2	6	12								8			8	36		24
73.9	8	12								11			11	40		24
73.9	6	12								8			8	36		24
73.9	10	12								13			13	44		24
URBAN																
73.2	6	12								8			8	36		24
73.2	8	12								11			11	40		24
73.1	10	12								13			13	44		24
73.0	6	12								8			8	36		24
72.9	20	12									27		27	64	6	24
72.3	10	12								13			13	44		24
72.3	6	12								8			8	36		24
72.3	6	12								8			8	36		24
RURAL																
71.1	6	12								8			8	36		24
70.3	8	12								11			11	40		24
70.1	8	12								11			11	40		24
70.0	10	12								13			13	44		24
69.8	6	12								8			8	36		24
69.8	6	12								8			8	36		24
69.8	6	12								8			8	36		24
69.8	6	12								8			8	36		24
69.7	20	12									27		27	64	6	24
69.7	10	12								13			13	44		24
68.4	6	12								8			8	36		24
68.2	20	12									27		27	64	6	24
68.2	8	12								11			11	40		24
68.2	6	12								8			8	36		24
68.2	6	12								8			8	36		24
67.2	6	12	8			8	36		24	8			8	36		24
63.1	8	12								11			11	40		24
63.1	36	12									48		48	96	12	24
60.0	100	12									133		133	224	33	24
59.9	50	12									67		67	124	16	24

MODEL: Default
FILE NAME: c:\pwworkspace\woodshank\10070654\66P38.dgn

USER NAME = ronald.woodshank	DESIGNED - RW	REVISED -	STATE OF ILLINOIS DEPARTMENT OF TRANSPORTATION	SCHEDULES - PATCHING SOUTHBOUND LANES	F.A.I. RTE. 39	SECTION 50(1-8)PP-18	COUNTY LASALLE	TOTAL SHEETS 17	SHEET NO. 9		
PLOT SCALE = \$SCALES	CHECKED - YP	REVISED -			SCALE:	SHEET 1 OF 2 SHEETS	STA. TO STA.	CONTRACT NO. 66P38			
PLOT DATE = 3/2/2024	DATE - 1/16/2024	REVISED -			ILLINOIS FED. AID PROJECT						

PATCHING SCHEDULES - SOUTHBOUND LANES

LOCATION	PATCH LENGTH	PATCH WIDTH	PASSING LANE							DRIVING LANE							
			CLASS A PATCHING			PATCH REINFORCEMENT	SAW CUT	DRILL AND GROUT #6 TIE BARS	DRILL AND GROUT #8 TIE BARS	CLASS A PATCHING			PATCH REINFORCEMENT	SAW CUT	DRILL AND GROUT #6 TIE BARS	DRILL AND GROUT #8 TIE BARS	
			TYPE II 10"	TYPE III 10"	TYPE IV 10"					TYPE II 10"	TYPE III 10"	TYPE IV 10"					
MILE MARKER	FEET	FEET	SQ YD	SQ YD	SQ YD	SQ YD	FOOT	EACH	EACH	SQ YD	SQ YD	SQ YD	SQ YD	FOOT	EACH	EACH	
URBAN																	
57.7	10	12								13			13	44		24	
57.3	10	12								13			13	44		24	
56.5	20	12									27		27	64	6	24	
54.4	6	12								8			8	36		24	
54.4	8	12								11			11	40		24	
54.4	10	12	13			13		44									
54.3	12	12									16		16	48		24	
54.3	16	12								13			13	44		24	
54.3	10	12									21		21	56		24	
54.2	16	12									21		21	56		24	
53.3	16	12									21		21	56		24	
RURAL																	
52.8	30	12										40	40	84	10	24	
52.5	6	12								8			8	36		24	
52.5	6	12								8			8	36		24	
52.5	6	12								8			8	36		24	
50.3	25	12										33	33	74	16	24	
48.3	15	12									20		20	54		24	
48.1	6	12	8			8		36									
48.0	16	12									21		21	56		24	
47.7	6	12	8			8		36									
47.6	20	12										27	27	64	12	24	
47.6	12	12									16		16	48		24	
47.2	8	12								11			11	40		24	
46.7	8	12								11			11	40		24	
46.4	33	12										44	44	90	22	24	
44.5	8	12								11			11	40		24	
44.5	8	12								11			11	40		24	
44.5	8	12								11			11	40		24	
43.5	22	12										29	29	68	14	24	
43.4	6	12								8			8	36		24	
43.1	20	12										27	27	64	12	24	
43.1	20	12										27	27	64	12	24	
43.0	30	12										40	40	84	20	24	
42.6	8	12								11			11	40		24	
42.6	30	12										40	40	84	20	24	
42.6	6	12								8			8	36		24	
41.1	6	12								8			8	36		24	
40.8	30	12										40	40	84	20	24	
40.8	22	12															
RURAL SUBTOTALS	437		32		29	61		212	7	120	338	52	649	1096	2984	231	1344
URBAN SUBTOTALS	206		13			13		44		24	127	79	54	260	824	12	432
SOUTHBOUND TOTALS	643		45		29	74		256	7	144	465	131	703	1356	3808	243	1776

MODEL: Default
FILE NAME: c:\pwworking\woodshank\10970654\66P38.dgn

USER NAME = ronald.woodshank	DESIGNED - RW	REVISED -
	DRAWN - RW	REVISED -
PLOT SCALE = \$SCALES	CHECKED - YP	REVISED -
PLOT DATE = 3/2/2024	DATE - 1/16/2024	REVISED -

**STATE OF ILLINOIS
DEPARTMENT OF TRANSPORTATION**

**SCHEDULES - PATCHING
SOUTHBOUND LANES**

SCALE: SHEET 2 OF 2 SHEETS STA. TO STA.

F.A.I. RTE.	SECTION	COUNTY	TOTAL SHEETS	SHEET NO.
39	50(1-8)PP-18	LASALLE	17	10
CONTRACT NO. 66P38				
ILLINOIS FED. AID PROJECT				

PAVEMENT MARKING SCHEDULES

LOCATION	LENGTH	NORTHBOUND LANES		
		MODIFIED URETHANE PAVEMENT MARKING LINE - 4"		MODIFIED URETHANE PAVEMENT MARKING LINE - 6"
		YELLOW FOOT	WHITE FOOT	WHITE FOOT
RURAL				
42.3	12		12	20
42.3	6		6	10
46.4	10		10	10
46.7	6		6	10
46.7	6		6	10
47.0	6		6	10
47.1	10		10	10
47.3	6		6	10
47.4	22		22	30
47.7	6		6	10
47.7	6		6	10
48.0	6		6	10
48.1	10		10	10
48.4	30		30	30
48.5	12		12	20
48.6	22		22	30
48.6	12		12	20
51.6	8		8	10
52.3	40		40	40
URBAN				
54.1	30	30		30
54.3	25		25	30
54.3	6		6	10
54.4	20		20	20
56.2	6	6		10
56.2	6	6		10
56.4	6	6		10
56.7	6	6		10
56.7	6	6		10
56.8	8		8	10
56.8	10		10	10
57.4	8		8	10
57.8	15		15	10
58.2	6		6	10
58.3	6	6		10
RURAL				
60.0	6		6	10
62.1	6		6	10
66.7	6		6	10
66.8	6		6	10
67.0	15		15	20
67.0	6		6	10
68.5	6		6	10
RURAL SUBTOTALS	287		287	390
URBAN SUBTOTALS	164	66	98	200

PAVEMENT MARKING SCHEDULES CON'T

LOCATION	LENGTH	NORTHBOUND LANES		
		MODIFIED URETHANE PAVEMENT MARKING LINE - 4"		MODIFIED URETHANE PAVEMENT MARKING LINE - 6"
		YELLOW FOOT	WHITE FOOT	WHITE FOOT
RURAL				
68.5	6		6	10
69.4	6		6	10
69.6	6		6	10
69.6	6		6	10
69.7	6		6	10
69.7	6		6	10
71.0	6		6	10
URBAN				
72.3	6		6	10
72.4	6		6	10
72.8	6		6	10
72.9	6		6	10
73.0	8		8	10
73.3	12		12	20
RURAL				
73.5	10		10	10
73.7	6		6	10
74.2	6		6	10
75.0	6		6	10
75.0	6		6	10
75.1	6		6	10
75.1	6		6	10
75.3	6		6	10
75.5	6		6	10
75.8	10		10	10
76.1	6		6	10
RURAL SUBTOTALS	116		116	180
URBAN SUBTOTALS	44		44	70
RURAL TOTALS	403		403	570
URBAN TOTALS	208		208	270

MODEL: Default
FILE NAME: c:\pwworking\woodshank\10070654\66P38.dgn

USER NAME = ronald.woodshank	DESIGNED - RW	REVISED -
	DRAWN - RW	REVISED -
PLOT SCALE = \$SCALE\$	CHECKED - YP	REVISED -
PLOT DATE = 3/2/2024	DATE - 1/16/2024	REVISED -

**STATE OF ILLINOIS
DEPARTMENT OF TRANSPORTATION**

**SCHEDULES
PAVEMENT MARKING**

SCALE: SHEET 1 OF 2 SHEETS STA. TO STA.

F.A.I. RTE.	SECTION	COUNTY	TOTAL SHEETS	SHEET NO.
39	50(1-8)PP-18	LASALLE	17	11
CONTRACT NO. 66P38				
ILLINOIS FED. AID PROJECT				

PAVEMENT MARKING SCHEDULES

LOCATION	LENGTH	SOUTHBOUND LANES		
		MODIFIED URETHANE PAVEMENT MARKING LINE - 4"		MODIFIED URETHANE PAVEMENT MARKING LINE - 6"
		YELLOW FOOT	WHITE FOOT	WHITE FOOT
RURAL				
76.0	6	6		10
76.0	6		6	10
75.3	12		12	20
74.4	6		6	10
74.4	10		10	10
74.3	10		10	10
74.3	12		12	20
74.3	10		10	10
74.3	15		15	20
74.2	6		6	10
73.9	8		8	10
73.9	6		6	10
73.9	10		10	10
URBAN				
73.2	6		6	10
73.2	8		8	10
73.1	10		10	10
73.0	6		6	10
72.9	20		20	20
72.3	10		10	10
72.3	6		6	10
72.3	6		6	10
RURAL				
71.1	6		6	10
70.6	8		8	10
70.1	8		8	10
70.0	10		10	10
69.8	6		6	10
69.8	6		6	10
69.8	6		6	10
69.8	6		6	10
69.7	20		20	20
69.7	10		10	10
68.4	6		6	10
68.2	20		20	20
68.2	8		8	10
68.2	6		6	10
67.2	6	6		10
63.1	8		8	10
63.1	36		36	40
60.0	100		100	100
59.9	50		50	50
RURAL SUBTOTALS	443	12	431	530
URBAN SUBTOTALS	72		72	90

PAVEMENT MARKING SCHEDULES CON'T

LOCATION	LENGTH	SOUTHBOUND LANES		
		MODIFIED URETHANE PAVEMENT MARKING LINE - 4"		MODIFIED URETHANE PAVEMENT MARKING LINE - 6"
		YELLOW FOOT	WHITE FOOT	WHITE FOOT
URBAN				
57.7	10		10	10
57.3	10		10	10
56.5	20		20	20
54.4	6		6	10
54.4	8		8	10
54.4	10	10		10
54.3	12		12	20
54.3	16		16	20
54.3	10		10	10
54.2	16		16	20
53.3	16		16	20
RURAL				
52.8			30	30
52.5			6	10
52.5			6	10
52.5			6	10
50.3			25	30
48.3			15	20
48.1	6	6		10
48.0			16	20
47.7	6	6		10
47.6			20	20
47.6			12	20
47.2			8	10
46.7			8	10
46.4			33	40
44.5			8	10
44.5			8	10
44.5			8	10
43.5			22	30
43.4			6	10
43.1			20	20
43.1			20	20
43.0			30	30
42.6			8	10
42.6			30	30
42.6			6	10
41.1			6	10
40.8			30	30
40.8	22	22		30
RURAL SUBTOTALS	34	34	387	510
URBAN SUBTOTALS	134	10	124	160
RURAL TOTALS	477		864	1040
URBAN TOTALS	206		206	250

MODEL: Default
FILE NAME: c:\pwworking\woodshank\10070654\66P38.dgn

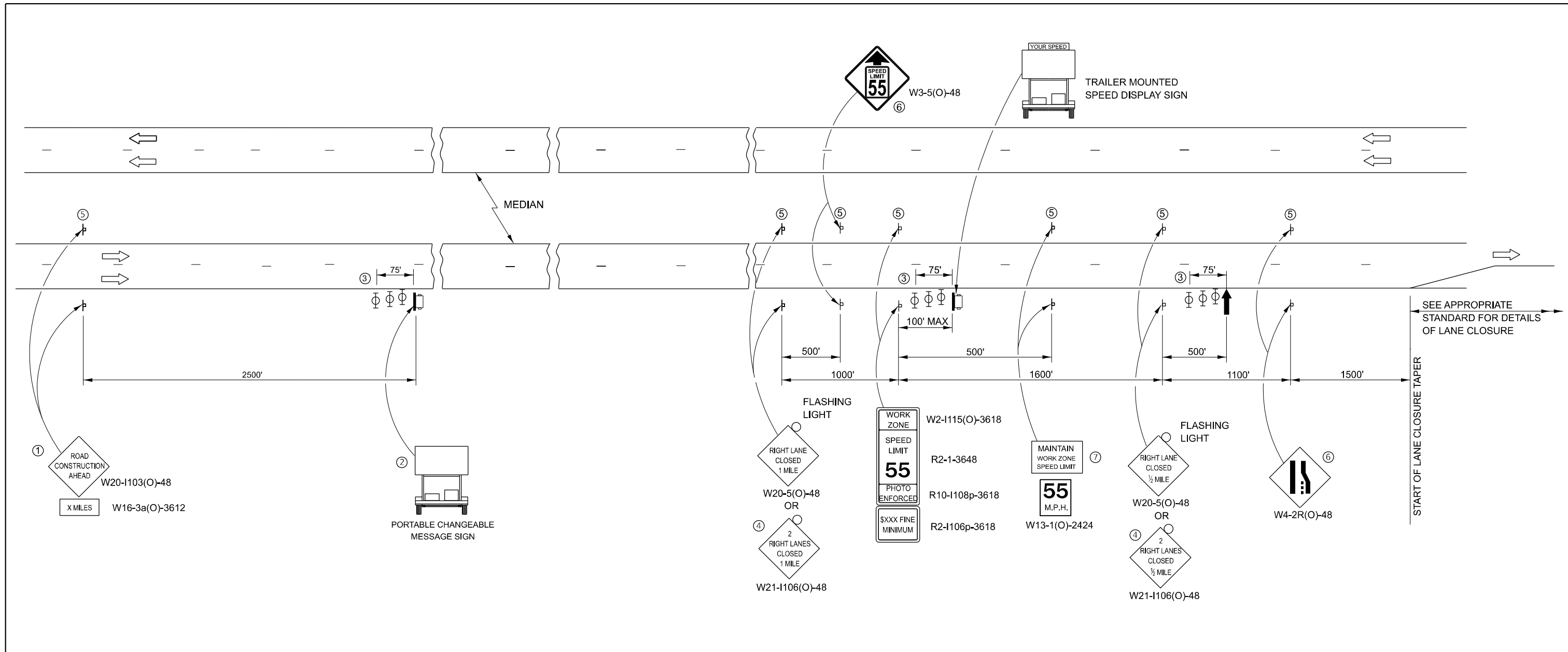
USER NAME = ronald.woodshank	DESIGNED - RW	REVISED -
	DRAWN - RW	REVISED -
PLOT SCALE = \$SCALE\$	CHECKED - YP	REVISED -
PLOT DATE = 3/2/2024	DATE - 1/16/2024	REVISED -

**STATE OF ILLINOIS
DEPARTMENT OF TRANSPORTATION**

**SCHEDULES
PAVEMENT MARKING**

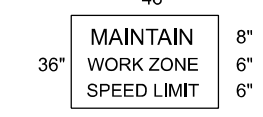
SCALE: SHEET 2 OF 2 SHEETS STA. TO STA.

F.A.I. RTE.	SECTION	COUNTY	TOTAL SHEETS	SHEET NO.
39	50(1-8)PP-18	LASALLE	17	12
CONTRACT NO. 66P38				
ILLINOIS FED. AID PROJECT				



- ① THE ROAD CONSTRUCTION AHEAD SIGN SHALL BE LOCATED 3 MILES IN ADVANCE OF THE PROJECT LIMITS.
- ② THE MESSAGE BOARD SHALL BE USED TO DISPLAY STATUS OF LANES WITHIN THE PROJECT. THE PRIMARY MESSAGES SHALL BE:
 "RIGHT LANE CLOSED" / " x MILES AHEAD"
 "LEFT LANE CLOSED" / " x MILES AHEAD"
 "ALL LANES OPEN"
- ③ THREE, TYPE II BARRICADES, DRUMS, OR VERTICAL BARRICADES AT 25' CENTERS.
- ④ THIS SIGN SHALL BE USED WHEN 2 LANES ARE CLOSED.
- ⑤ THIS SIGN SHALL BE OMITTED WHEN THE MEDIAN WIDTH IS LESS THAN 10'.
- ⑥ THIS SIGN SHALL ONLY BE USED IF THE EXISTING SPEED LIMIT IS GREATER THAN 65 MPH.

⑦ 48"x36" FLUORESCENT ORANGE SIGN WITH BLACK LETTERS.



"MAINTAIN WORK ZONE SPEED LIMIT" SIGN SHALL NOT BE PAID FOR SEPARATELY BUT SHALL BE INCLUDED IN THIS TRAFFIC CONTROL STANDARD.

SYMBOLS

- ↑ ARROW BOARD
- ▭ PORTABLE CHANGEABLE MESSAGE SIGN
- ⊥ SIGN
- ⊕ TYPE II BARRICADE, DRUM, OR VERTICAL BARRICADE WITH MONODIRECTIONAL FLASHING LIGHT

GENERAL NOTE:

THIS STANDARD IS USED WHERE AT ANY TIME A LANE IS CLOSED ON A FREEWAY/EXPRESSWAY.

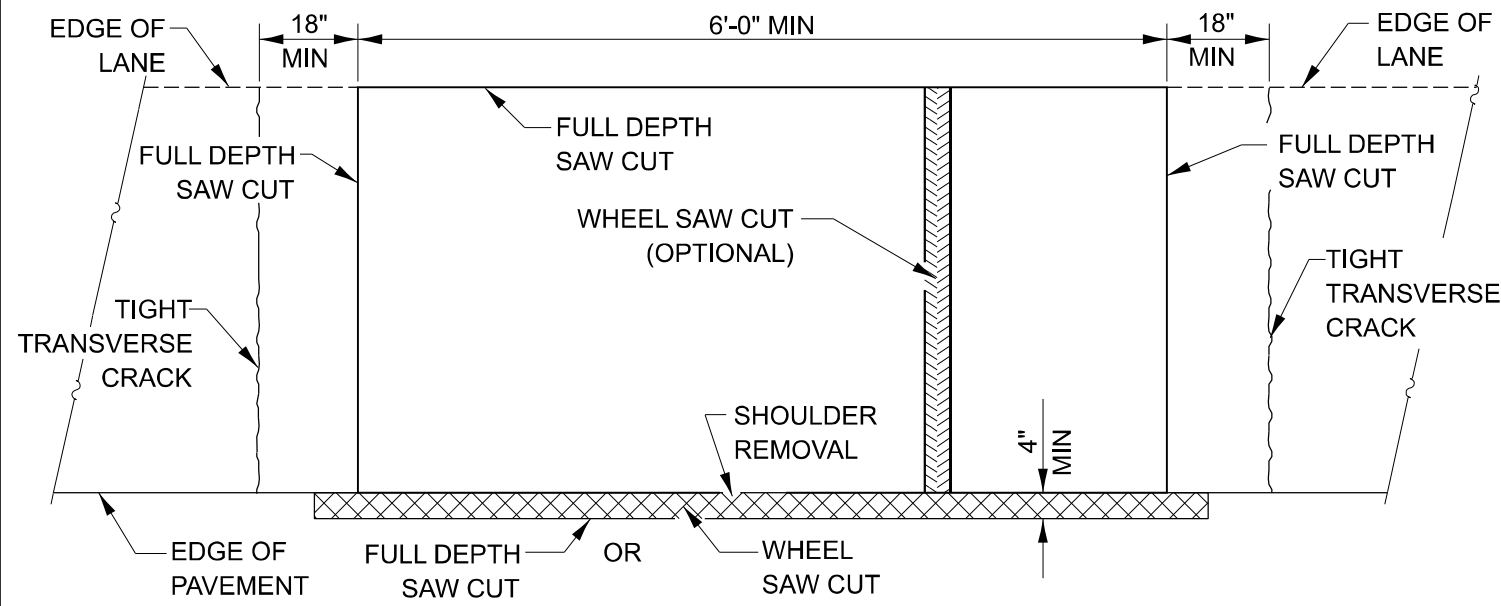
WHEN THE LEFT LANE IS CLOSED, LEFT LANE CLOSED SIGNS SHALL BE SUBSTITUTED FOR THE RIGHT LANE CLOSED SIGNS.

THE FIRST THREE SIGNS, RUMBLE STRIPS AND THE MESSAGE BOARD ARE STATIONARY. THE OTHER SIGNS AND ARROWBOARDS SHALL BE MOVED AS NECESSARY TO MAINTAIN THE REQUIRED DISTANCE FROM THE START OF THE LANE CLOSURE TAPER(S).

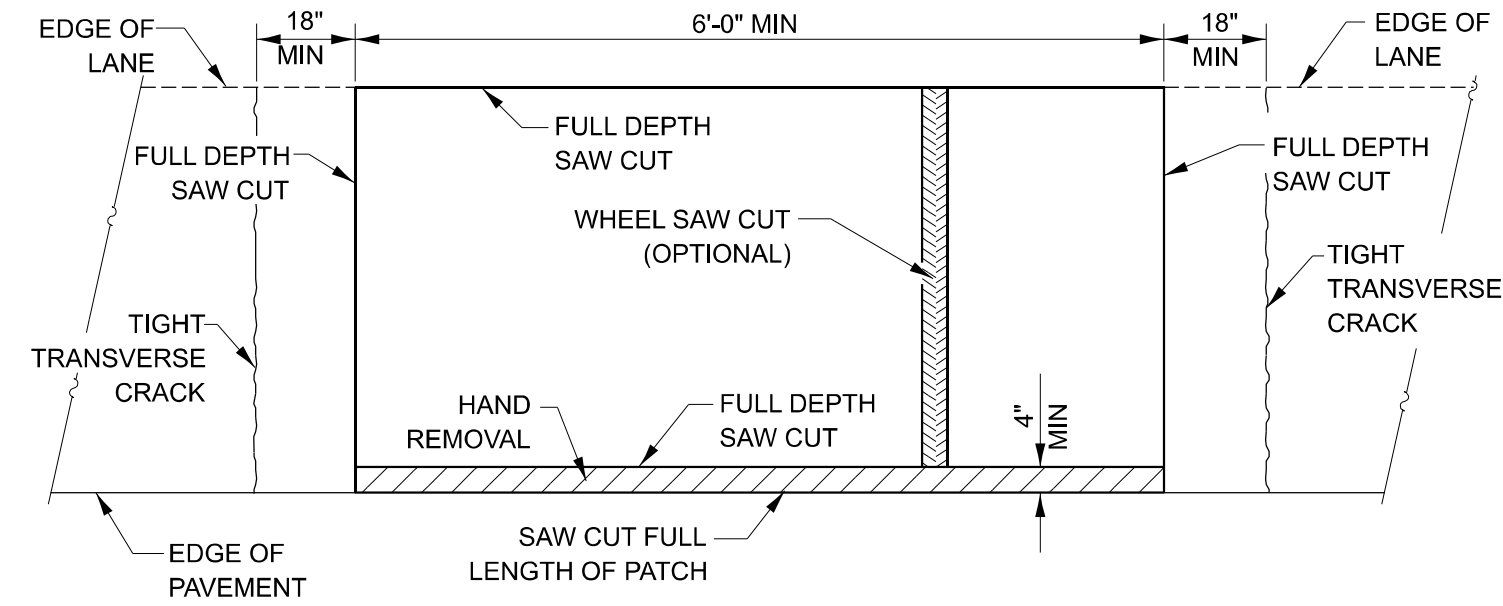
SEE SPECIAL PROVISIONS.

MODEL: Default

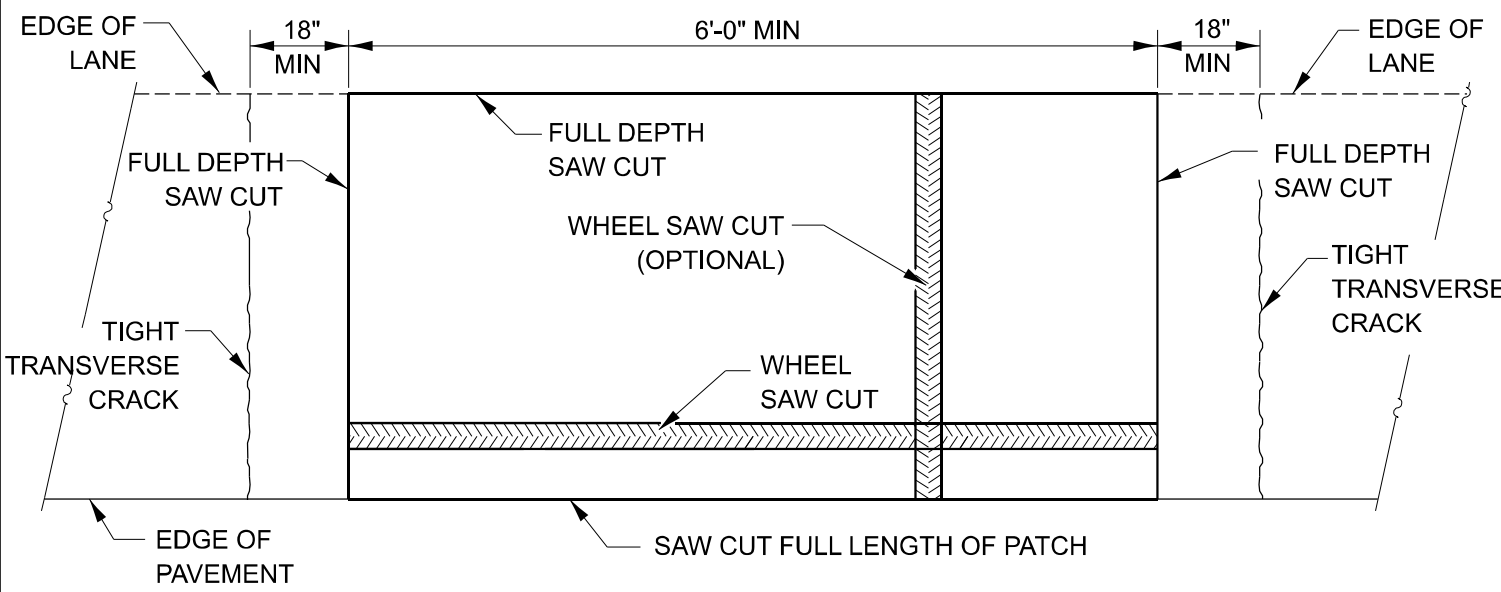
USER NAME = ronald.woodshank PLOT SCALE = \$SCALE\$ PLOT DATE = 3/2/2024	DESIGNED - RW	REVISED -	STATE OF ILLINOIS DEPARTMENT OF TRANSPORTATION	TRAFFIC CONTROL AND PROTECTION, STANDARD 701400	F.A.I. RTE. 39	SECTION 50(1-8)PP-18	COUNTY LASALLE	TOTAL SHEETS 17	SHEET NO. 13		
	DRAWN - RW	REVISED -			CONTRACT NO. 66P38		ILLINOIS	FED. AID PROJECT			
	CHECKED - YP	REVISED -			SCALE:	SHEET 1 OF 1 SHEETS	STA.	TO STA.			
	DATE - 1/16/2024	REVISED -									



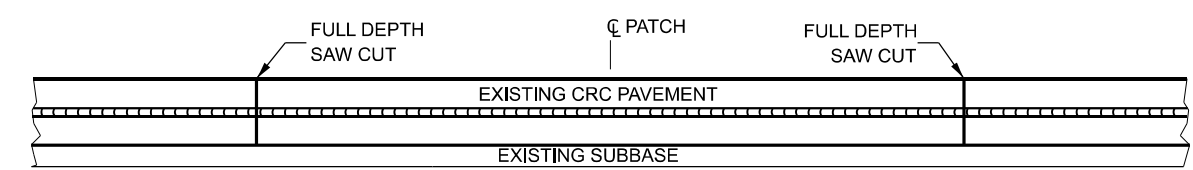
PAVEMENT SAWING DETAIL
(HMA SHOULDER)



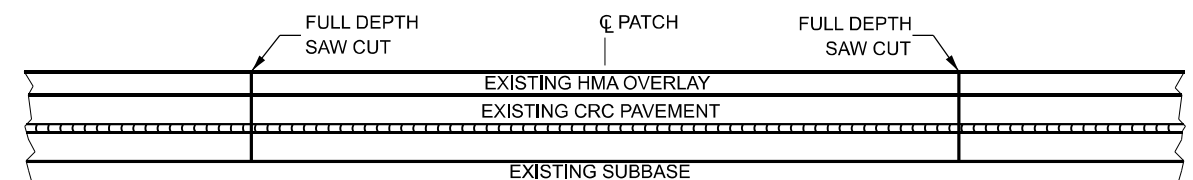
PAVEMENT SAWING DETAIL
(PCC SHOULDER)



ALTERNATE SAWING DETAIL
(PCC SHOULDER)



EXISTING PAVEMENT WITHOUT HMA SURFACE



EXISTING PAVEMENT WITH HMA SURFACE

PAVEMENT SAWING DETAIL FOR CLASS A PATCHING
(CRC PAVEMENT)

MODEL: Default
FILE NAME: c:\pwwork\woodshank\097065466P38.dgn

USER NAME = ronald.woodshank	DESIGNED - RW	REVISED -
DRAWN - RW	CHECKED - YP	REVISED -
PLOT SCALE = \$SCALE\$	DATE - 1/16/2024	REVISED -
PLOT DATE = 3/2/2024		

STATE OF ILLINOIS
DEPARTMENT OF TRANSPORTATION

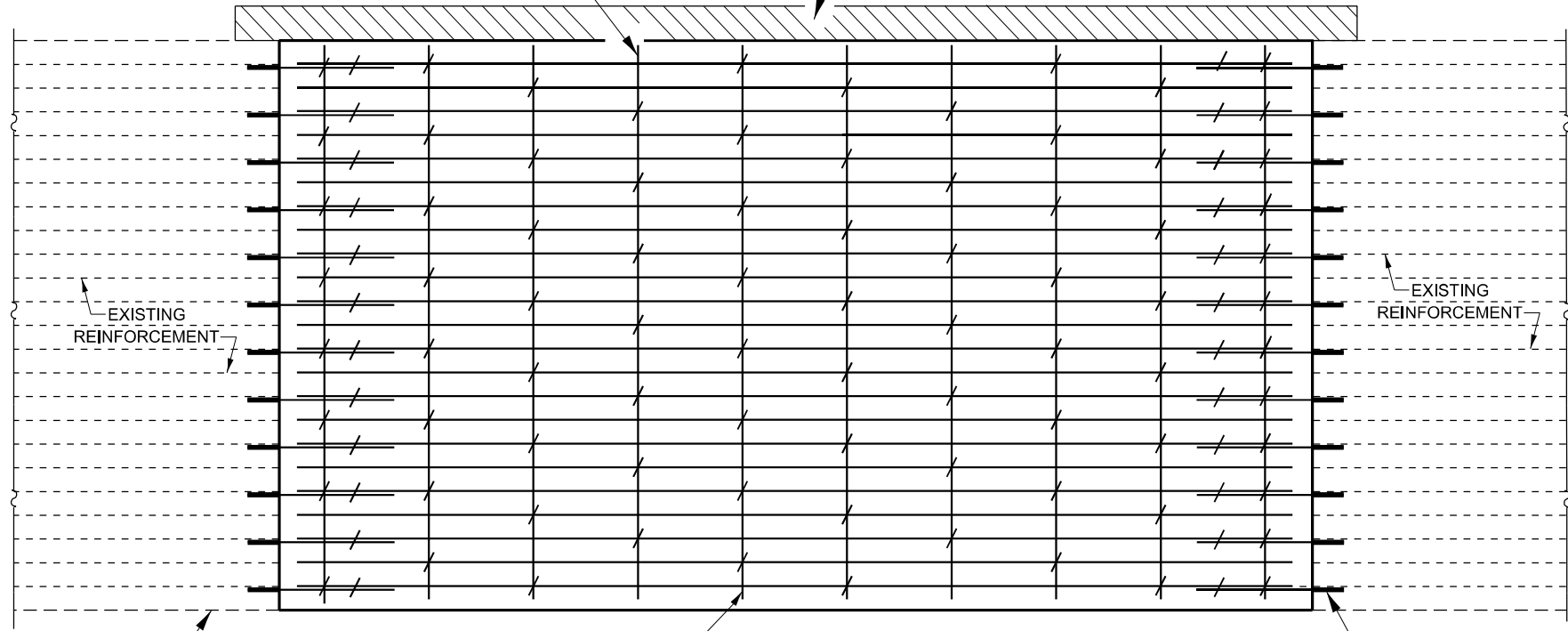
CLASS A PATCHING DETAILS

SCALE: SHEET 1 OF 3 SHEETS STA. TO STA.

F.A.I. RTE.	SECTION	COUNTY	TOTAL SHEETS	SHEET NO.
39	50(1-8)PP-18	LASALLE	17	14
CONTRACT NO. 66P38				
ILLINOIS FED. AID PROJECT				

TRANSVERSE REBAR SHALL EXTEND TO OUTER LONGITUDINAL REBAR WHILE PROVIDING A MINIMUM 3" CLEARANCE FROM EXISTING PAVEMENT EDGE

SHOULDER REMOVAL

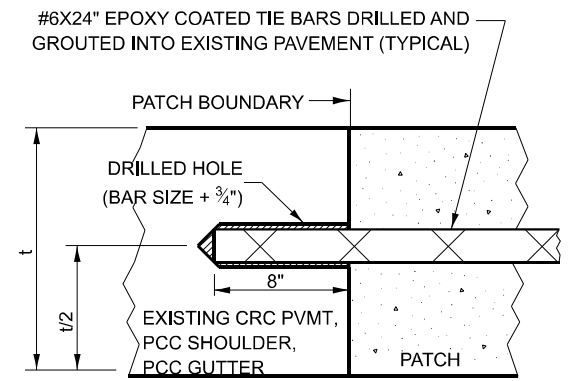


EDGE OF LANE

* NO. 6 TRANSVERSE BAR SHALL BE TIED TO LONGITUDINAL BAR.

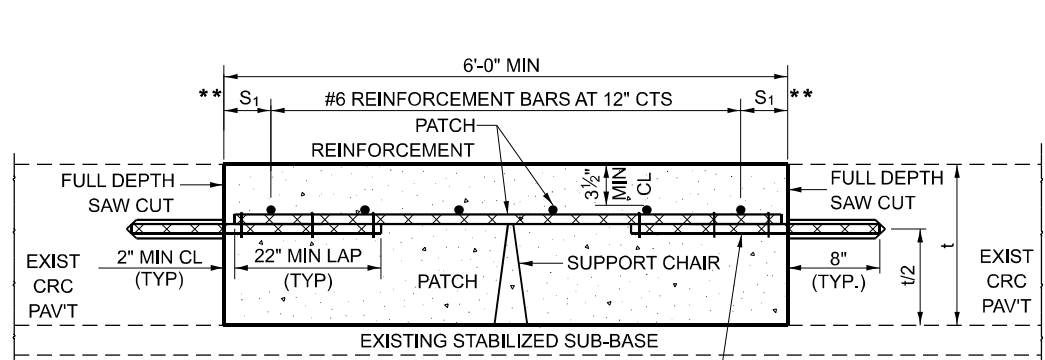
#8X32" EPOXY COATED TIE BARS. DRILLED AND GROUTED INTO EXISTING PAVEMENT (TYPICAL).

PAVEMENT REINFORCEMENT DETAIL



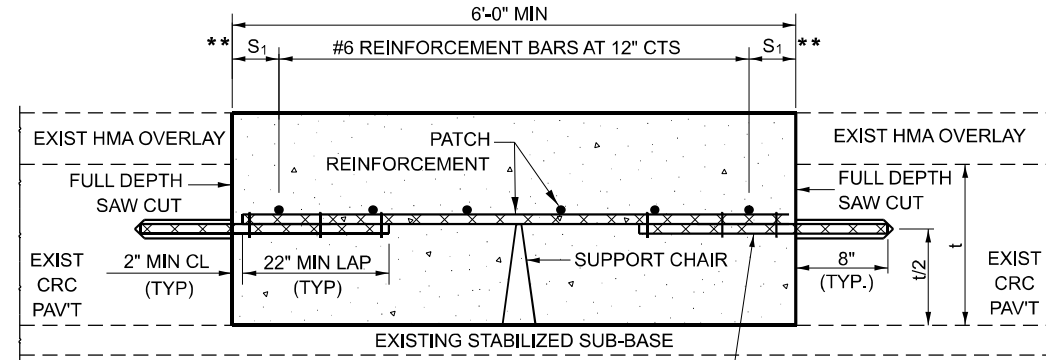
LONGITUDINAL CONSTRUCTION JOINT

PATCHES MORE THAN 20' IN LENGTH SHALL BE TIED TO ADJACENT PAVEMENT, PCC SHOULDERS OR PCC CURB AND GUTTER WITH #6x24" EPOXY COATED TIE BARS AT 36" CENTERS.



WITHOUT HMA OVERLAY

#8X32" EPOXY COATED TIE BARS DRILLED AND GROUTED INTO EXISTING PAVEMENT (TYPICAL)



WITH HMA OVERLAY

#8X32" EPOXY COATED TIE BARS DRILLED AND GROUTED INTO EXISTING PAVEMENT (TYPICAL)

PATCHING DETAIL FOR CLASS A PATCHING (CRC PAVEMENT)

NOTES:
EXISTING LONGITUDINAL REINFORCEMENT:
22 - #5 BARS AT 6 1/2" SPACING.

SPACING OF NEW LONGITUDINAL REINFORCEMENT SHALL MATCH THE SPACING OF EXISTING REINFORCEMENT AND SHALL BE TIED TOGETHER WITH A MINIMUM OF TWO TIES PER BAR.

TRANSVERSE CONSTRUCTION JOINTS: #8 X 32" EPOXY COATED TIE BAR SHALL BE DRILLED AND GROUTED INTO THE EXISTING PCC PAVEMENT AT A SPACING OF ± TWICE THE SPACING OF EXISTING LONGITUDINAL REINFORCEMENT BARS AND SHALL BE TIED TO PROPOSED LONGITUDINAL REINFORCEMENT WITH A MINIMUM OF TWO TIES PER BAR WHEN PRACTICAL.

* EVERY THIRD INTERSECTION MUST BE TIED. WHEN THE MINIMUM CLEARANCE CANNOT BE OBTAINED WITH THE TRANSVERSE REBAR ON TOP, THEN THE TRANSVERSE REBAR SHALL BE TIED TO THE BOTTOM OF THE LONGITUDINAL REBAR.

** VARIABLE: WHERE S₁ IS 2 1/2" MIN. AND 12" MAX.

MODEL: Default
FILE NAME: c:\pwworkspace\woodshank\10070654\66P38.dgn

USER NAME = ronald.woodshank	DESIGNED - RW	REVISED -
	DRAWN - RW	REVISED -
PLOT SCALE = \$SCALE\$	CHECKED - YP	REVISED -
PLOT DATE = 3/2/2024	DATE - 1/16/2024	REVISED -

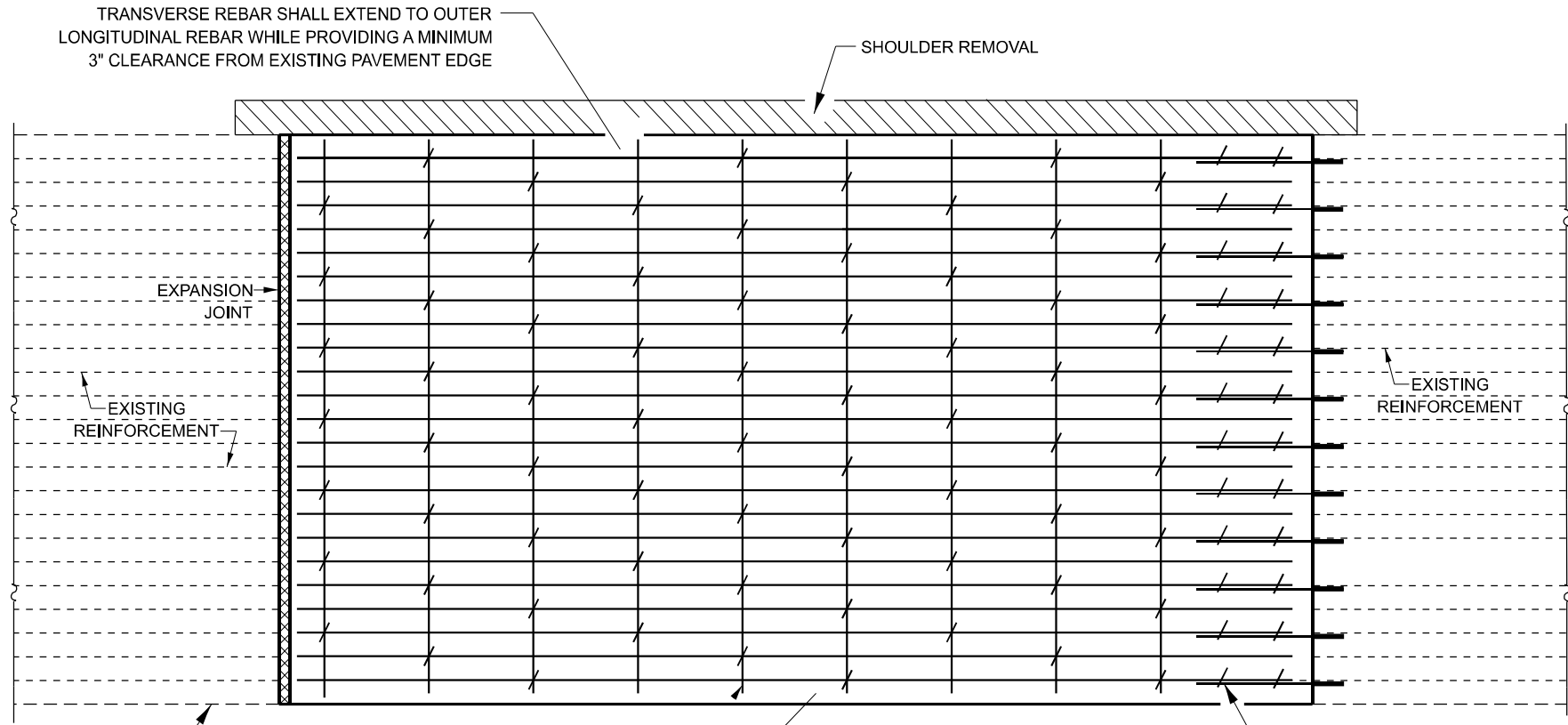
STATE OF ILLINOIS
DEPARTMENT OF TRANSPORTATION

CLASS A PATCHING DETAILS

SCALE: SHEET 2 OF 3 SHEETS STA. TO STA.

F.A.I. RTE.	SECTION	COUNTY	TOTAL SHEETS	SHEET NO.
39	50(1-8)PP-18	LASALLE	17	15
CONTRACT NO. 66P38				
ILLINOIS FED. AID PROJECT				

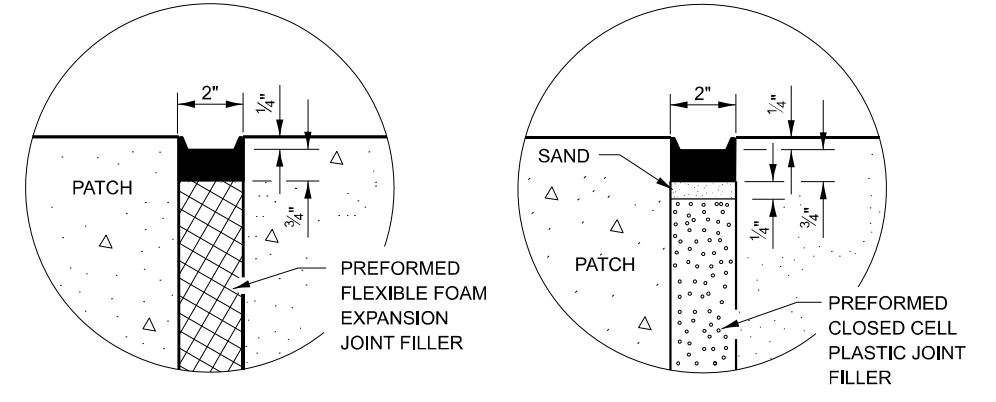
← DIRECTION OF TRAFFIC



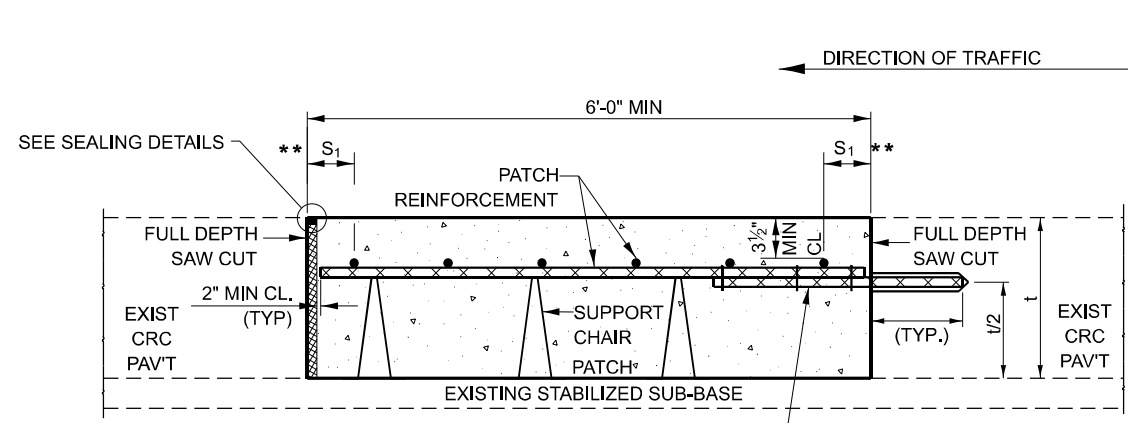
* NO. 6 TRANSVERSE BAR SHALL BE TIED TO LONGITUDINAL BAR.

#8X32" EPOXY COATED TIE BARS, DRILLED AND GROUTED INTO EXISTING PAVEMENT (TYPICAL).

PAVEMENT REINFORCEMENT DETAIL

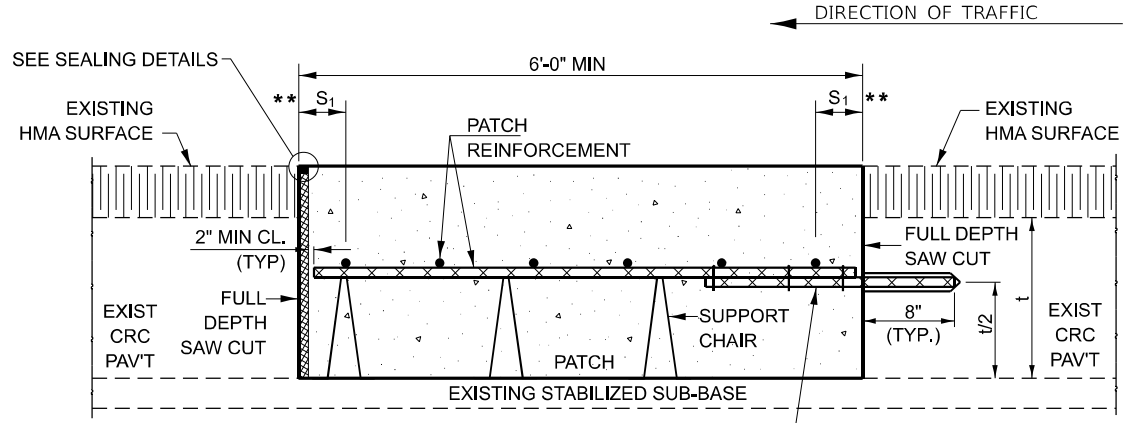


SEALING DETAILS



WITHOUT HMA OVERLAY

#8X32" EPOXY COATED TIE BARS DRILLED AND GROUTED INTO EXISTING PAVEMENT (TYPICAL). MINIMUM 22" LAP WITH PATCH REINFORCEMENT.



WITH HMA OVERLAY

#8X32" EPOXY COATED TIE BARS DRILLED AND GROUTED INTO EXISTING PAVEMENT (TYPICAL). MINIMUM 22" LAP WITH PATCH REINFORCEMENT.

CLASS A PATCH WITH EXPANSION JOINT

MODEL: Default
FILE NAME: c:\pwworking\woodshank\10970654\66P38.dgn

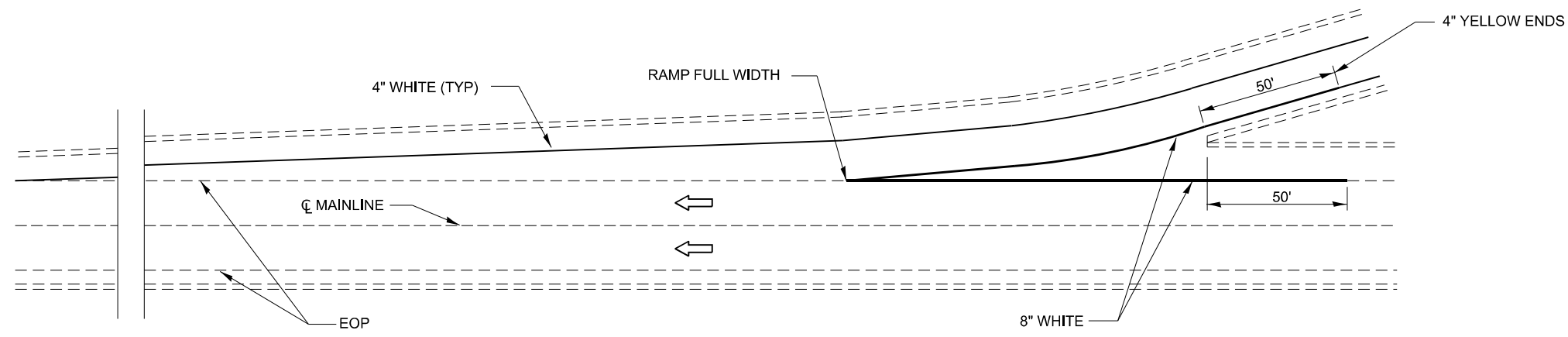
USER NAME = ronald.woodshank	DESIGNED - RW	REVISED -
	DRAWN - RW	REVISED -
PLOT SCALE = \$SCALE\$	CHECKED - YP	REVISED -
PLOT DATE = 3/2/2024	DATE - 1/16/2024	REVISED -

**STATE OF ILLINOIS
DEPARTMENT OF TRANSPORTATION**

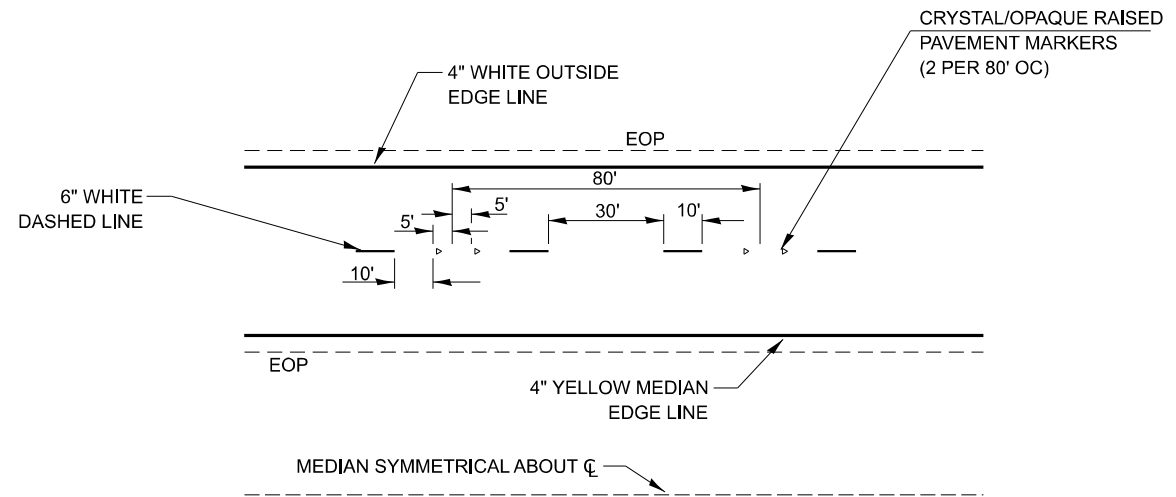
CLASS A PATCHING DETAILS

SCALE: SHEET 3 OF 3 SHEETS STA. TO STA.

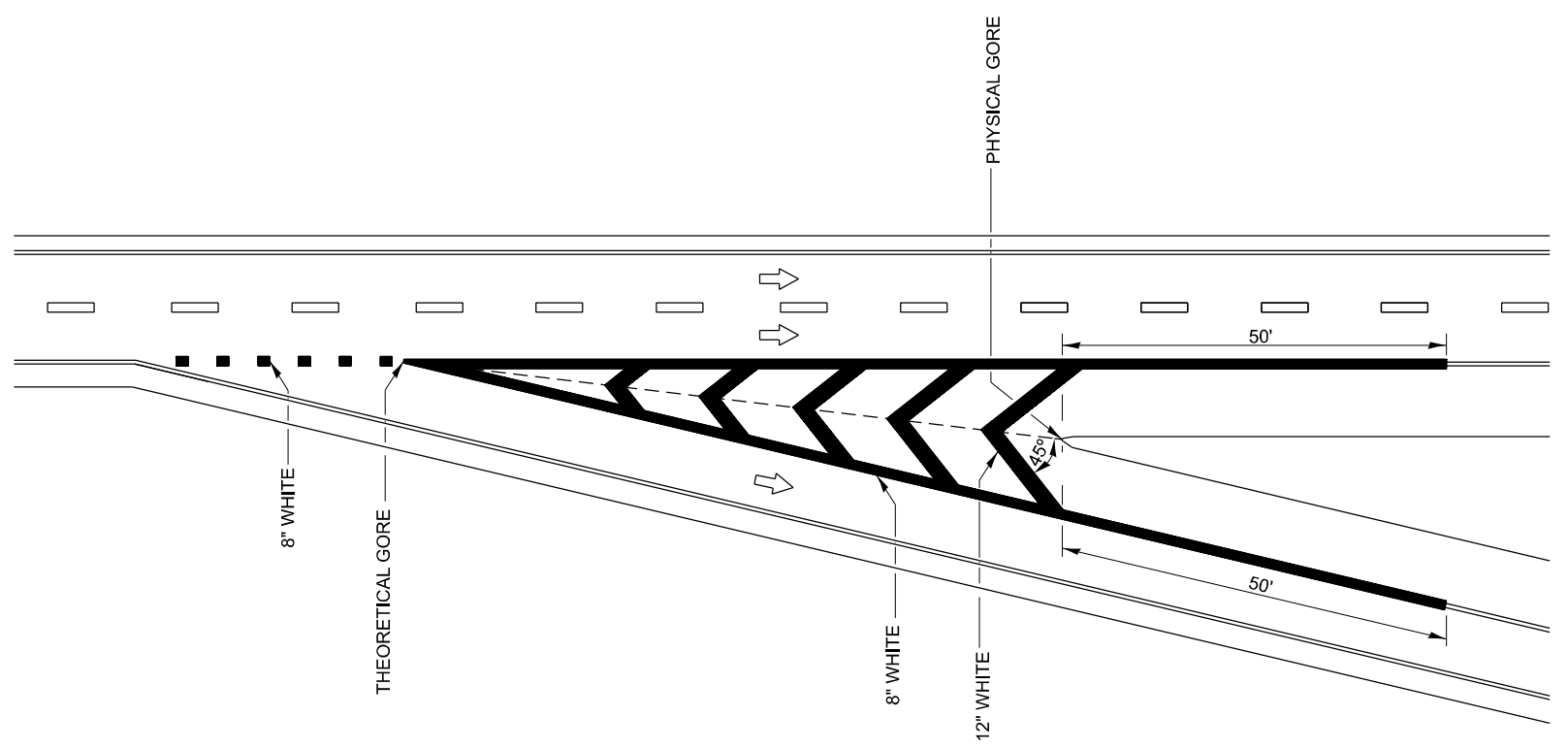
F.A.I. RTE.	SECTION	COUNTY	TOTAL SHEETS	SHEET NO.
39	50(1-8)PP-18	LASALLE	17	16
CONTRACT NO. 66P38				
ILLINOIS FED. AID PROJECT				



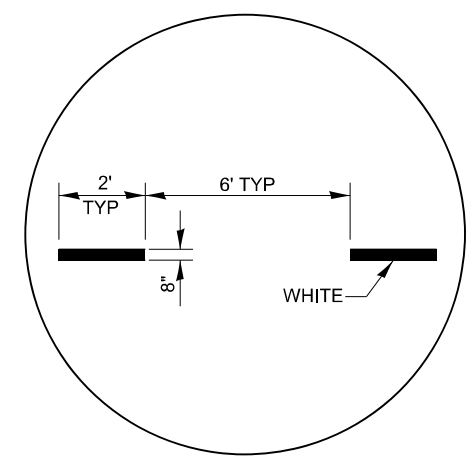
TYPICAL PAVEMENT MARKING FOR ENTRANCE RAMP TERMINALS



TYPICAL PAVEMENT MARKINGS



EXIT RAMP GORE DETAIL



INTERSTATE RAMP TRANSITION LINE

MODEL: Default
FILE NAME: c:\pwworking\woodshank\10270654\66P38.dgn

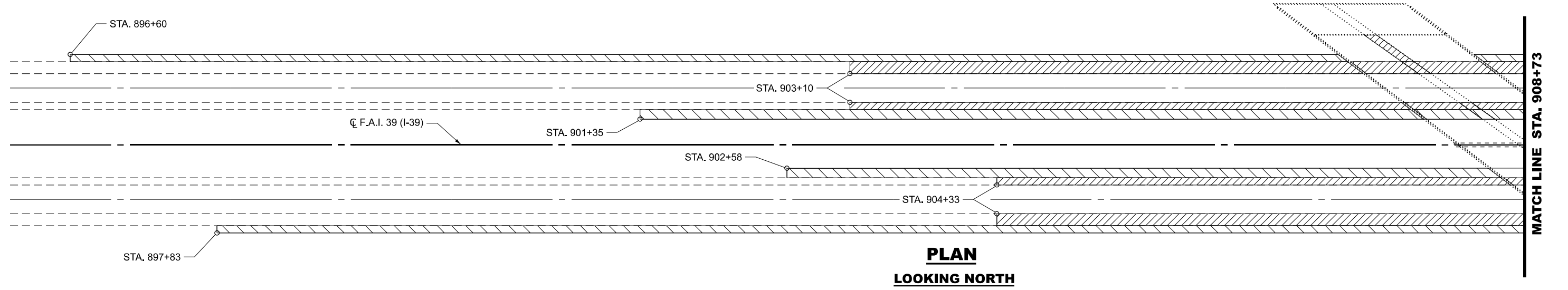
USER NAME = ronald.woodshank	DESIGNED - RW	REVISED -
DRAWN - RW	REVISOR -	
PLOT SCALE = \$SCALE\$	CHECKED - YP	REVISED -
PLOT DATE = 3/2/2024	DATE - 1/16/2024	REVISED -

**STATE OF ILLINOIS
DEPARTMENT OF TRANSPORTATION**

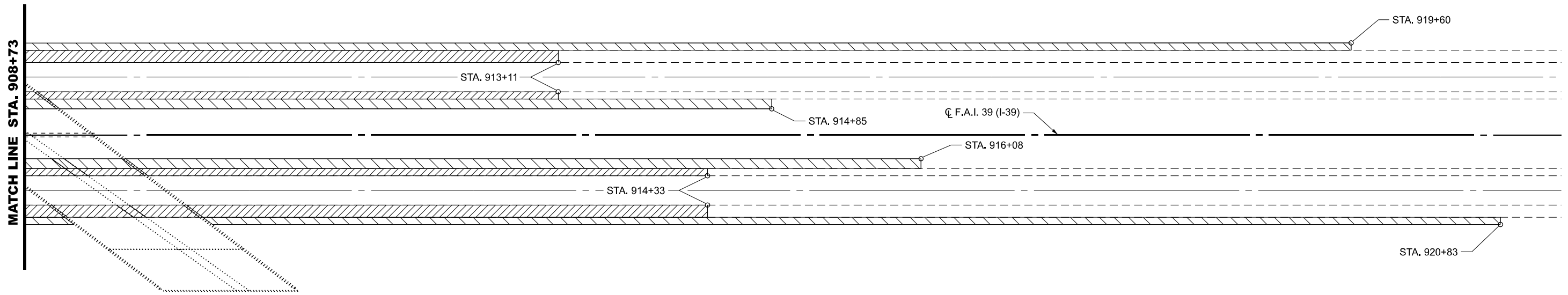
TYPICAL PAVEMENT MARKING

SCALE: SHEET 1 OF 1 SHEETS STA. TO STA.

F.A.I. RTE.	SECTION	COUNTY	TOTAL SHEETS	SHEET NO.
39	50(1-8)PP-18	LASALLE	17	17
CONTRACT NO. 66P38				
ILLINOIS FED. AID PROJECT				



**PLAN
LOOKING NORTH**



LEGEND

- PAVED SHOULDER REMOVAL**
- PORTLAND CEMENT CONCRETE SHOULDERS 10"**
- EARTH EXCAVATION**
- FERTILIZER, SEEDING MULCH (EXCAVATED MATERIALS)**

NOTES:

1. PROPOSED PORTLAND CEMENT CONCRETE SHOULDERS SHALL BE TIED TO THE EXISTING CONTINUOUSLY REINFORCED CONCRETE PAVEMENT AND CONCRETE GUTTER WITH #6 EPOXY COATED TIE BARS DRILLED AND GROUTED 8" DEEP AT 36" CTS.
2. IN THE EVENT THAT THE EXISTING PIPE UNDERDRAINS ARE DETERMINED TO BE INADEQUATE OR DETERIORATED FOR REUSE, THE PIPE UNDERDRAINS SHALL BE REMOVED AND REPLACED WITH THE SAME DIAMETER AND LIKE MATERIALS AT THE DIRECTION OF THE ENGINEER. THE COST OF THE REMOVAL, FURNISHING AND INSTALLING NEW PIPE UNDERDRAINS SHALL BE PAID FOR ACCORDING TO ARTICLE 109.04 OF THE STANDARD SPECIFICATIONS.

MODEL: Default
FILE NAME: c:\pwworking\woodshank\097065466P38.dgn

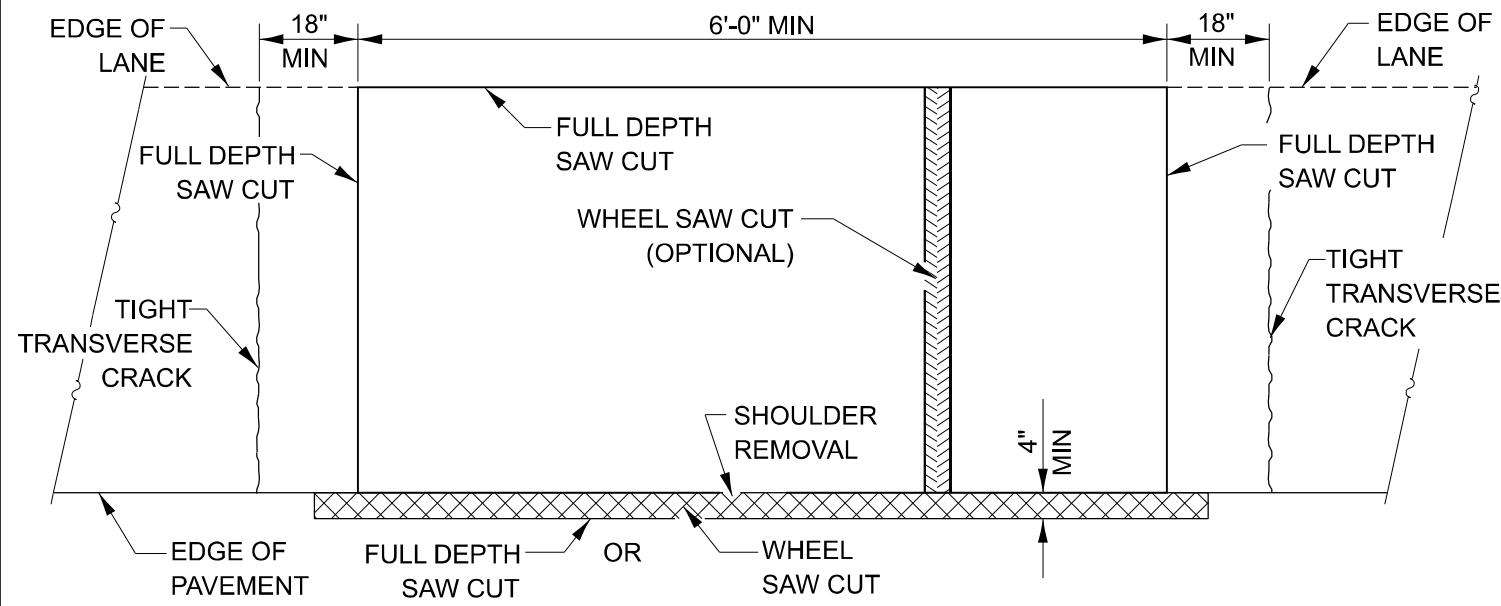
USER NAME = ronald.woodshank	DESIGNED - RW	REVISED -
	DRAWN - RW	REVISED -
PLOT SCALE = \$SCALE\$	CHECKED - YP	REVISED -
PLOT DATE = 2/27/2024	DATE - 1/16/2024	REVISED -

**STATE OF ILLINOIS
DEPARTMENT OF TRANSPORTATION**

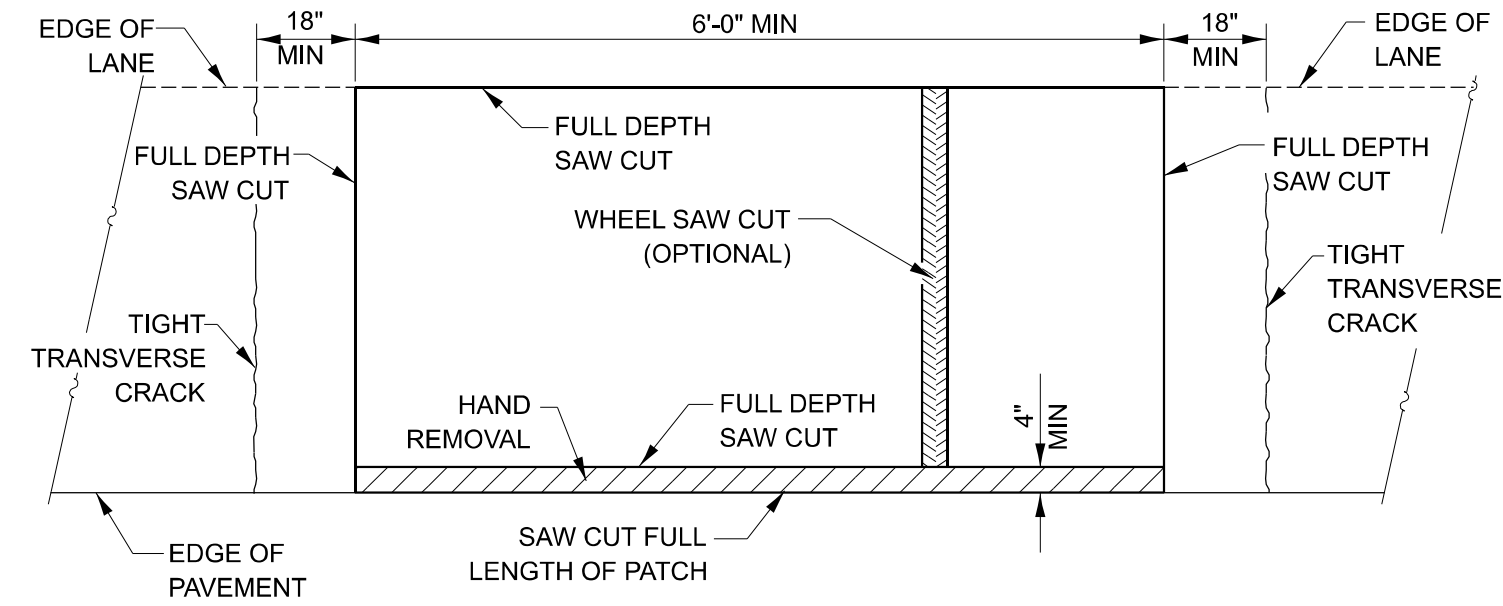
**SHOULDER RECONSTRUCTION AT
STRUCTURE NO.'S 050-0181 AND 050-0195**

SCALE: SHEET 1 OF 1 SHEETS STA. TO STA.

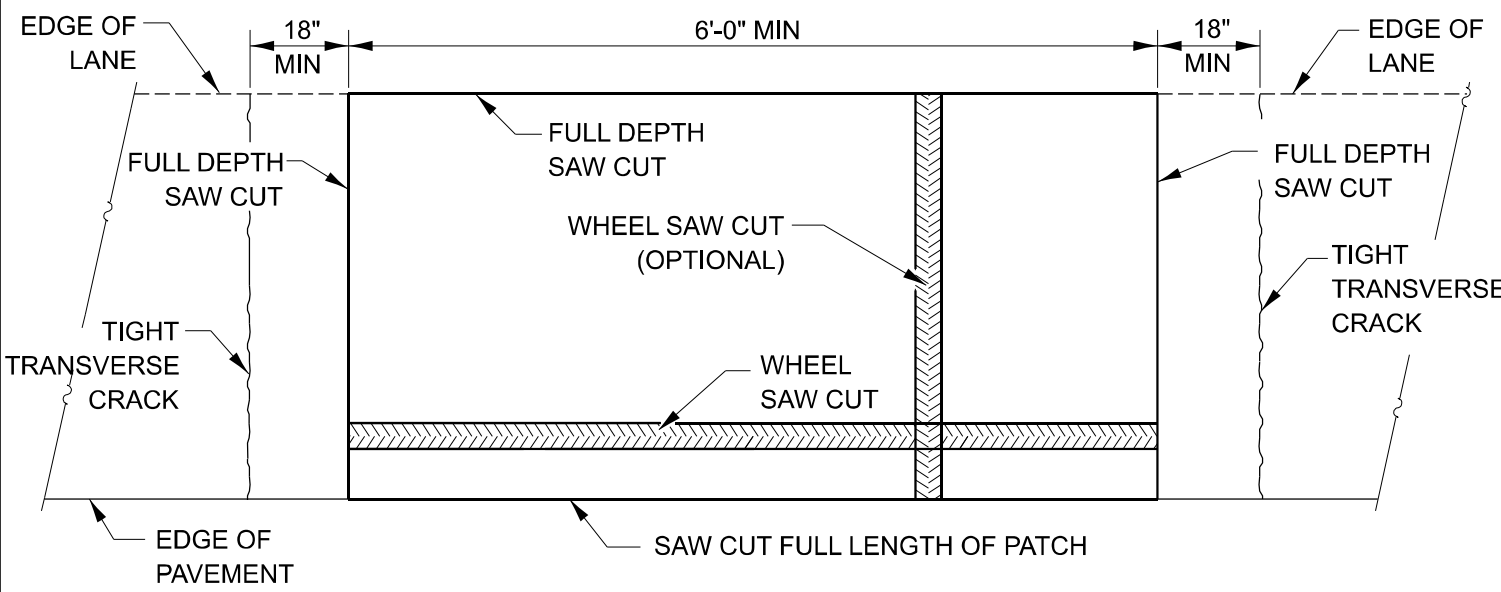
F.A.I. RTE.	SECTION	COUNTY	TOTAL SHEETS	SHEET NO.
39	50(1-8)PP-18	LASALLE	22	18
CONTRACT NO. 66P38				
ILLINOIS FED. AID PROJECT				



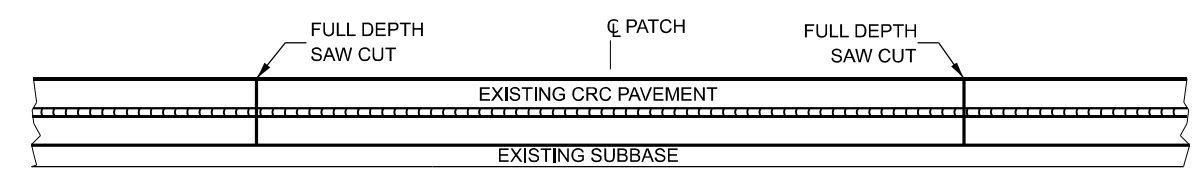
PAVEMENT SAWING DETAIL
(HMA SHOULDER)



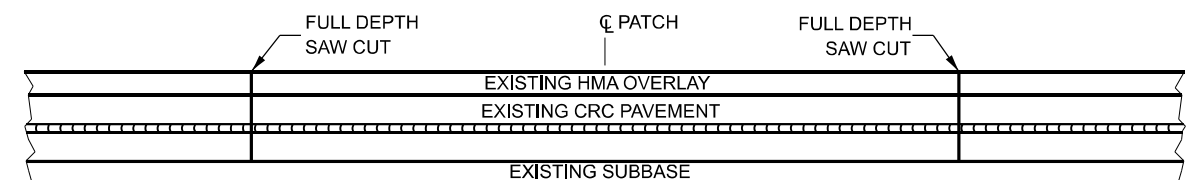
PAVEMENT SAWING DETAIL
(PCC SHOULDER)



ALTERNATE SAWING DETAIL
(PCC SHOULDER)



EXISTING PAVEMENT WITHOUT HMA SURFACE



EXISTING PAVEMENT WITH HMA SURFACE

PAVEMENT SAWING DETAIL FOR CLASS A PATCHING
(CRC PAVEMENT)

MODEL: Default
FILE NAME: c:\pwwork\woodshank\097065466P38.dgn

USER NAME = ronald.woodshank	DESIGNED - RW	REVISED -
DRAWN - RW	CHECKED - YP	REVISED -
PLOT SCALE = \$SCALE\$	DATE - 1/16/2024	REVISED -
PLOT DATE = 2/27/2024		

STATE OF ILLINOIS
DEPARTMENT OF TRANSPORTATION

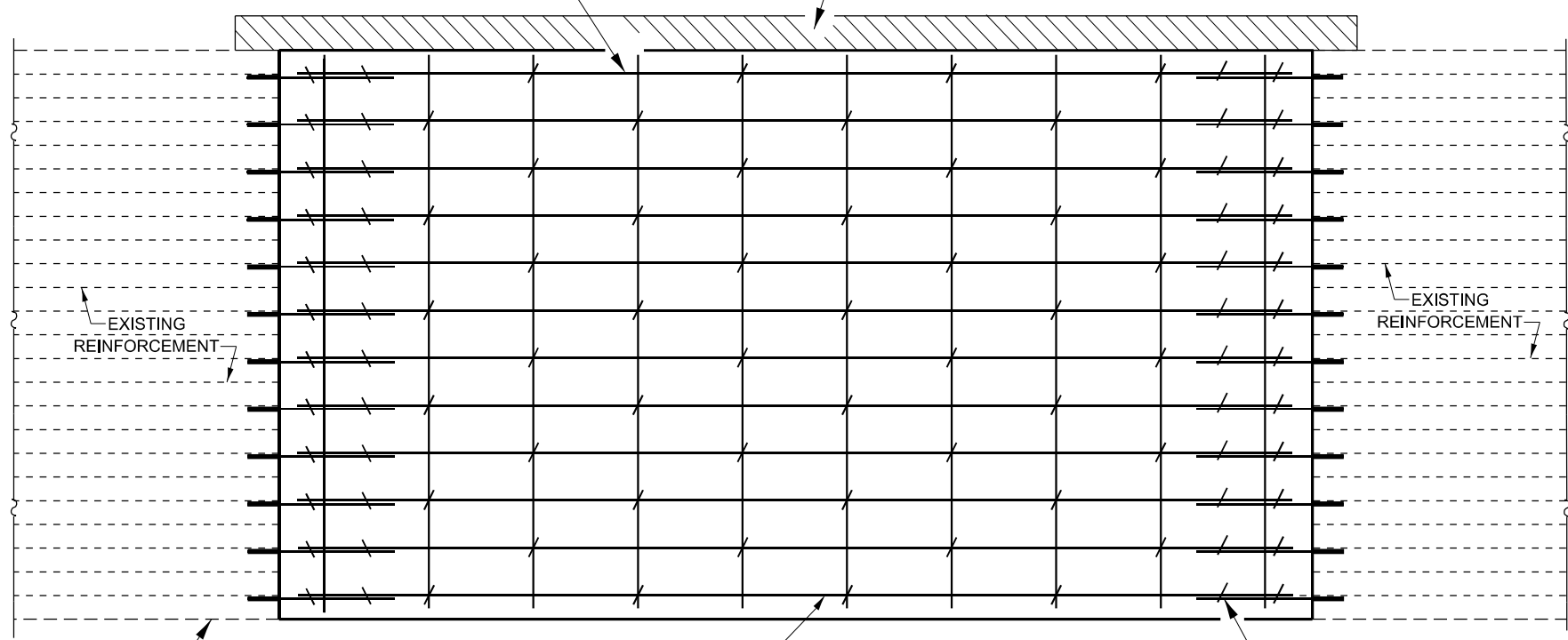
CLASS A PATCHING DETAILS

SCALE: SHEET 1 OF 3 SHEETS STA. TO STA.

F.A.I. RTE.	SECTION	COUNTY	TOTAL SHEETS	SHEET NO.
39	50(1-8)PP-18	LASALLE	22	19
CONTRACT NO. 66P38				
ILLINOIS FED. AID PROJECT				

TRANSVERSE REBAR SHALL EXTEND TO OUTER LONGITUDINAL REBAR WHILE PROVIDING A MINIMUM 3" CLEARANCE FROM EXISTING PAVEMENT EDGE

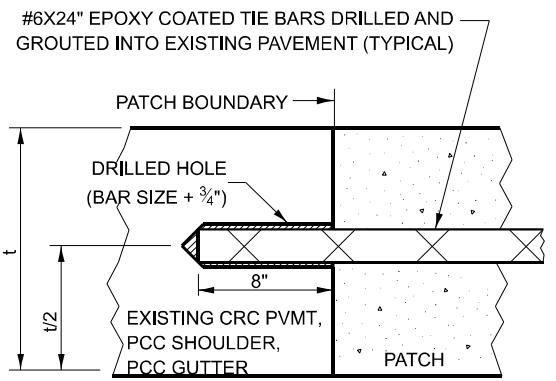
SHOULDER REMOVAL



* NO. 6 TRANSVERSE BAR SHALL BE TIED TO LONGITUDINAL BAR.

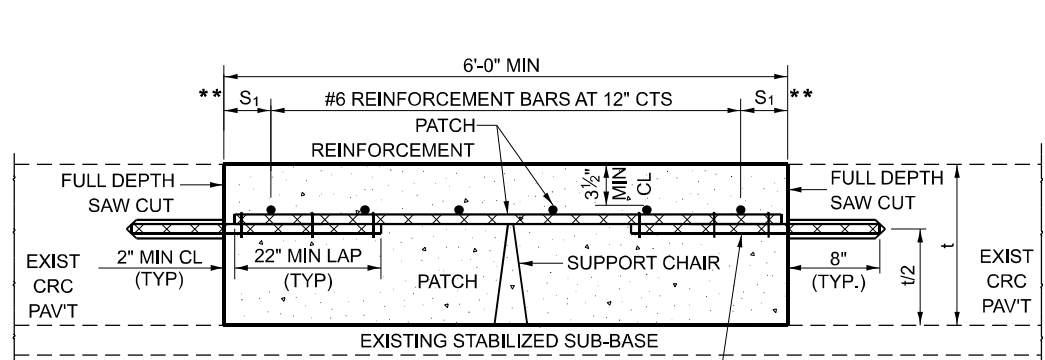
#8X32" EPOXY COATED TIE BARS, DRILLED AND GROUDED INTO EXISTING PAVEMENT (TYPICAL).

PAVEMENT REINFORCEMENT DETAIL



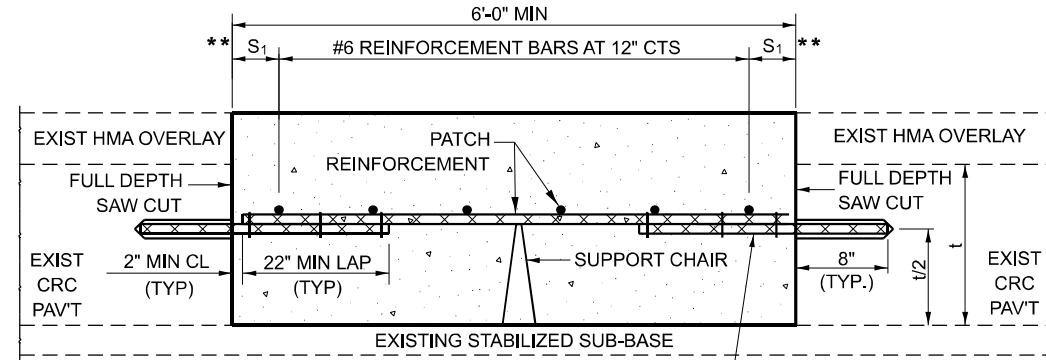
LONGITUDINAL CONSTRUCTION JOINT

PATCHES MORE THAN 20' IN LENGTH SHALL BE TIED TO ADJACENT PAVEMENT, PCC SHOULDERS OR PCC CURB AND GUTTER WITH #6X24" EPOXY COATED TIE BARS AT 36" CENTERS.



WITHOUT HMA OVERLAY

#8X32" EPOXY COATED TIE BARS DRILLED AND GROUDED INTO EXISTING PAVEMENT (TYPICAL)



WITH HMA OVERLAY

#8X32" EPOXY COATED TIE BARS DRILLED AND GROUDED INTO EXISTING PAVEMENT (TYPICAL)

PATCHING DETAIL FOR CLASS A PATCHING (CRC PAVEMENT)

NOTES:
EXISTING LONGITUDINAL REINFORCEMENT:
22 - #5 BARS AT 6 1/2" SPACING.

SPACING OF NEW LONGITUDINAL REINFORCEMENT SHALL MATCH THE SPACING OF EXISTING REINFORCEMENT AND SHALL BE TIED TOGETHER WITH A MINIMUM OF TWO TIES PER BAR.

TRANSVERSE CONSTRUCTION JOINTS: #8 X 32" EPOXY COATED TIE BAR SHALL BE DRILLED AND GROUDED INTO THE EXISTING PCC PAVEMENT AT A SPACING OF ± TWICE THE SPACING OF EXISTING LONGITUDINAL REINFORCEMENT BARS AND SHALL BE TIED TO PROPOSED LONGITUDINAL REINFORCEMENT WITH A MINIMUM OF TWO TIES PER BAR WHEN PRACTICAL.

* EVERY THIRD INTERSECTION MUST BE TIED. WHEN THE MINIMUM CLEARANCE CANNOT BE OBTAINED WITH THE TRANSVERSE REBAR ON TOP, THEN THE TRANSVERSE REBAR SHALL BE TIED TO THE BOTTOM OF THE LONGITUDINAL REBAR.

** VARIABLE: WHERE S1 IS 2 1/2" MIN. AND 12" MAX.

MODEL: Default
FILE NAME: c:\pwworking\woodshank\10970654\66P38.dgn

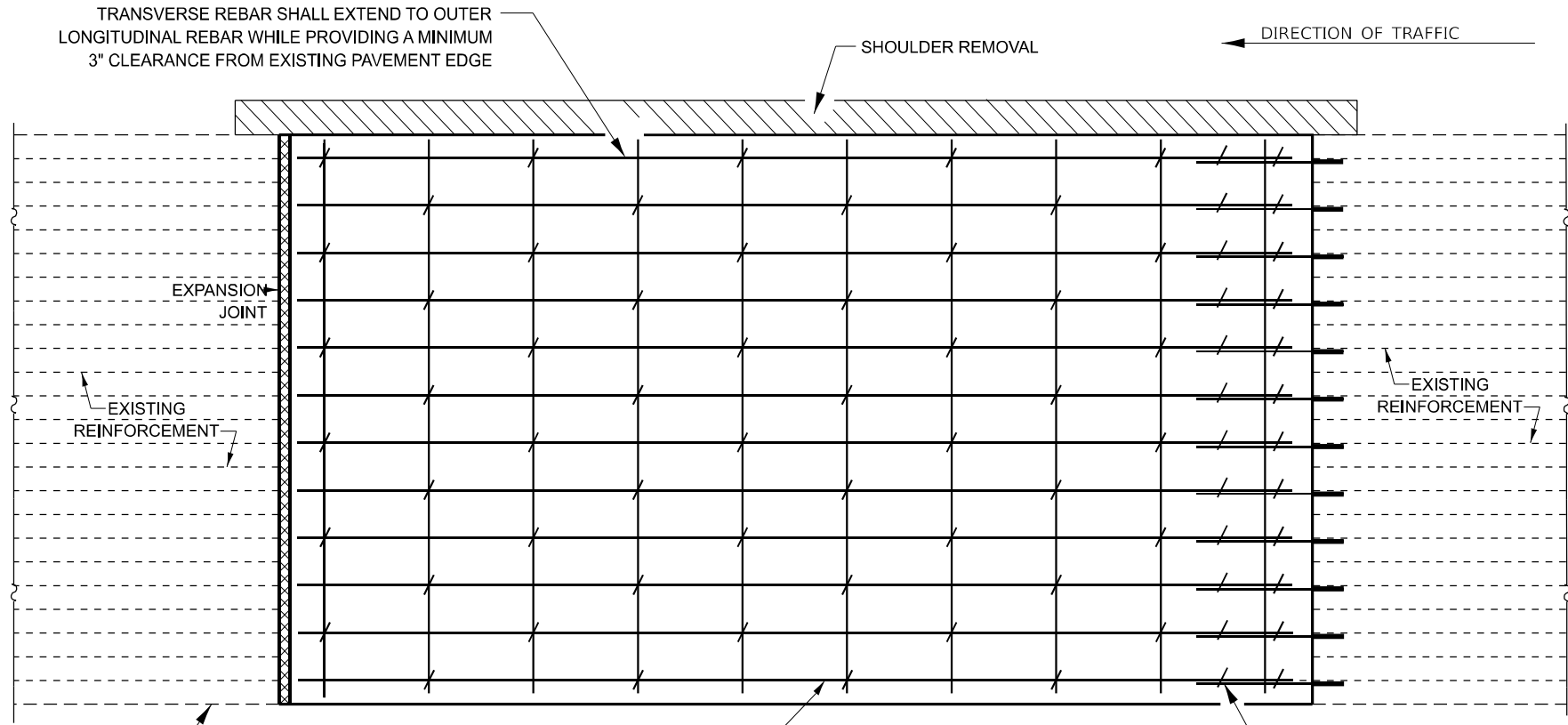
USER NAME = ronald.woodshank	DESIGNED - RW	REVISED -
	DRAWN - RW	REVISED -
PLOT SCALE = \$SCALES	CHECKED - YP	REVISED -
PLOT DATE = 2/27/2024	DATE - 1/16/2024	REVISED -

STATE OF ILLINOIS
DEPARTMENT OF TRANSPORTATION

CLASS A PATCHING DETAILS

SCALE: SHEET 2 OF 3 SHEETS STA. TO STA.

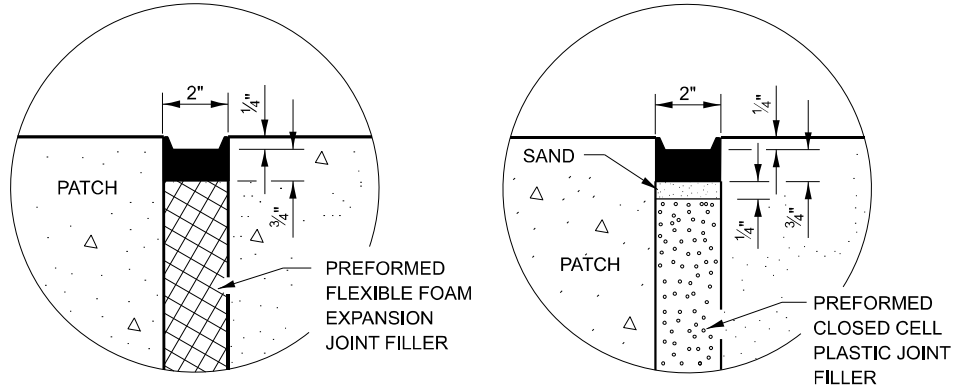
F.A.I. RTE.	SECTION	COUNTY	TOTAL SHEETS	SHEET NO.
39	50(1-8)PP-18	LASALLE	22	20
CONTRACT NO. 66P38				
ILLINOIS FED. AID PROJECT				



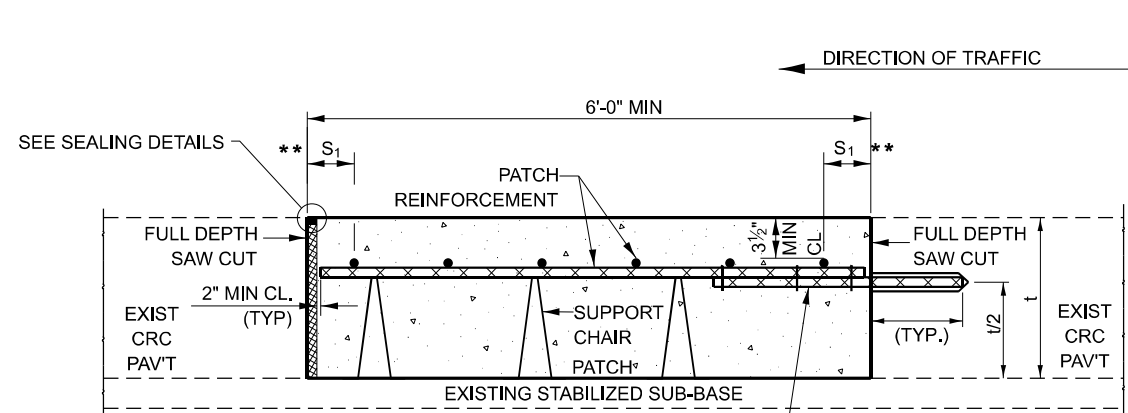
* NO. 6 TRANSVERSE BAR SHALL BE TIED TO LONGITUDINAL BAR.

#8X32" EPOXY COATED TIE BARS, DRILLED AND GROUTED INTO EXISTING PAVEMENT (TYPICAL).

PAVEMENT REINFORCEMENT DETAIL

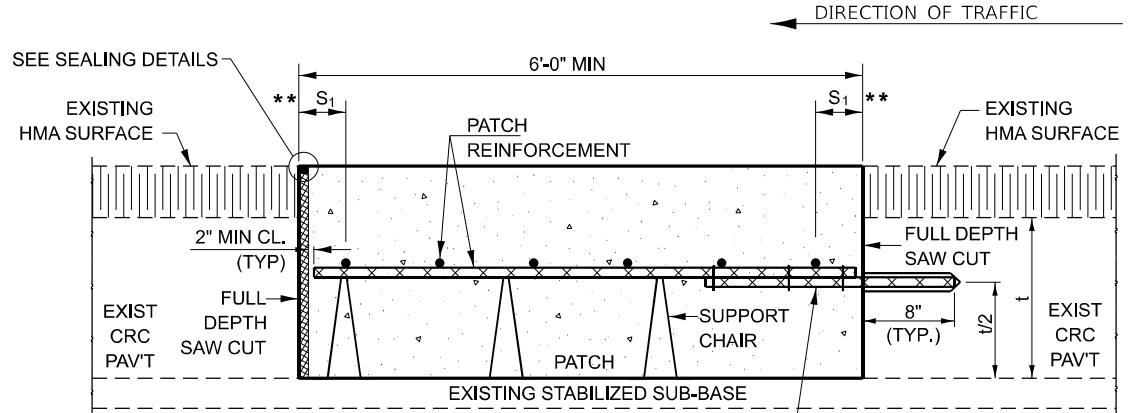


SEALING DETAILS



WITHOUT HMA OVERLAY

#8X32" EPOXY COATED TIE BARS DRILLED AND GROUTED INTO EXISTING PAVEMENT (TYPICAL). MINIMUM 22" LAP WITH PATCH REINFORCEMENT.



WITH HMA OVERLAY

#8X32" EPOXY COATED TIE BARS DRILLED AND GROUTED INTO EXISTING PAVEMENT (TYPICAL). MINIMUM 22" LAP WITH PATCH REINFORCEMENT.

CLASS A PATCH WITH EXPANSION JOINT

MODEL: Default
FILE NAME: c:\pwworking\woodshank\10970654\66P38.dgn

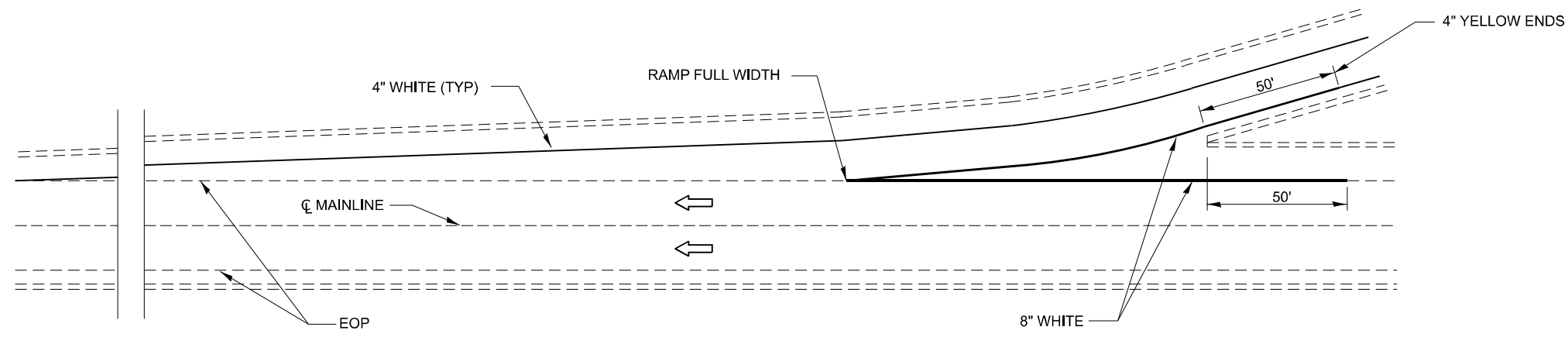
USER NAME = ronald.woodshank	DESIGNED - RW	REVISED -
	DRAWN - RW	REVISED -
PLOT SCALE = \$SCALE\$	CHECKED - YP	REVISED -
PLOT DATE = 2/27/2024	DATE - 1/16/2024	REVISED -

**STATE OF ILLINOIS
DEPARTMENT OF TRANSPORTATION**

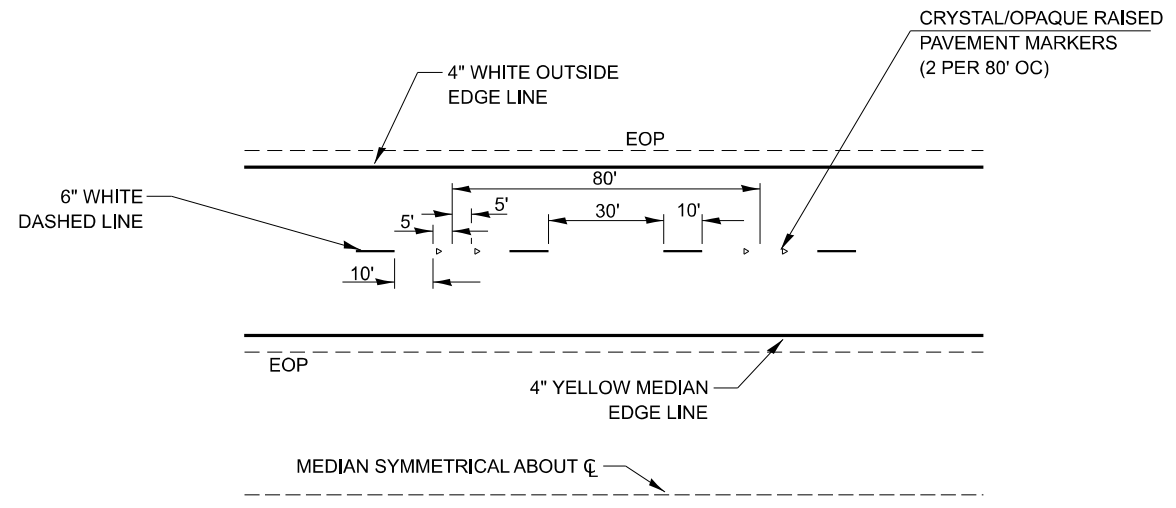
CLASS A PATCHING DETAILS

SCALE: SHEET 3 OF 3 SHEETS STA. TO STA.

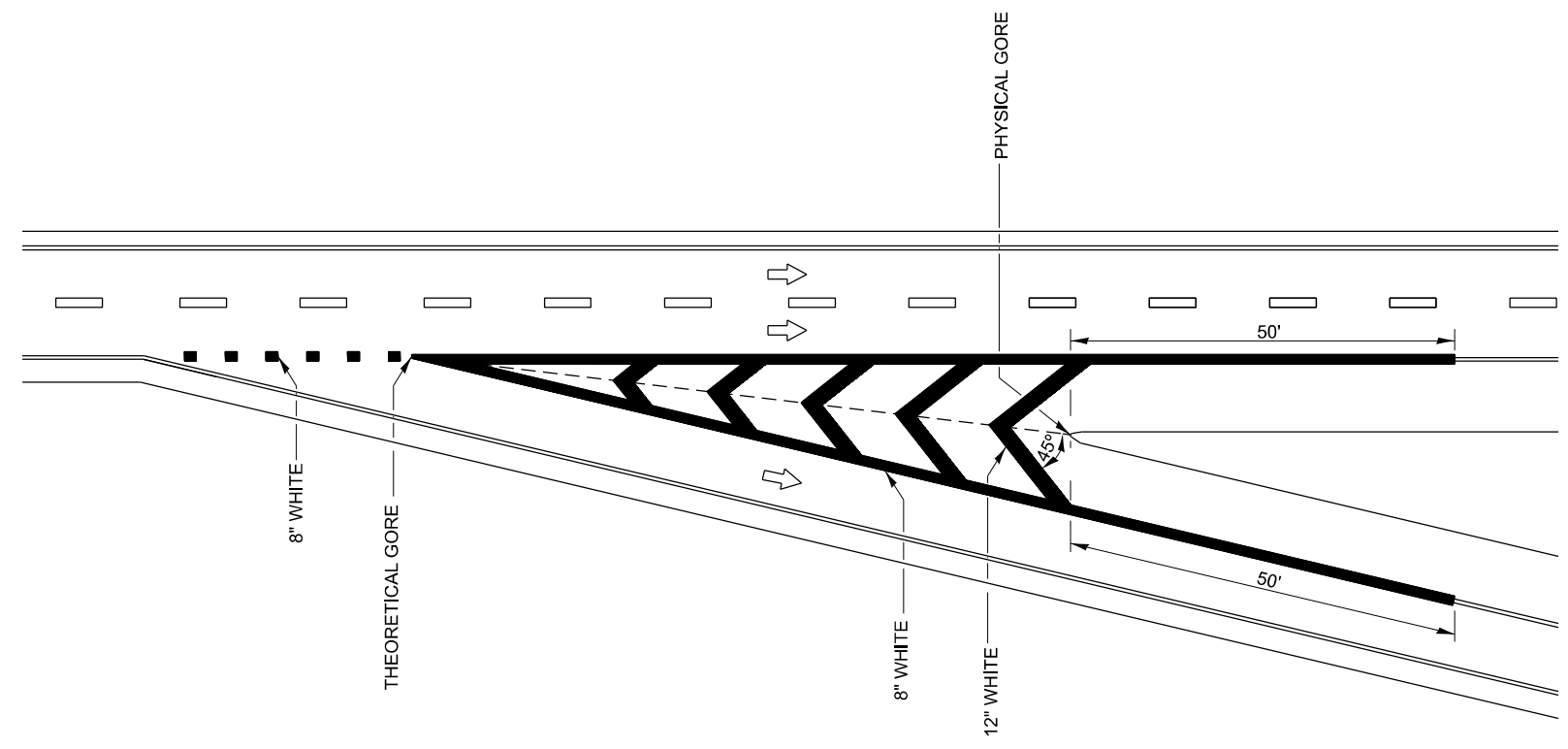
F.A.I. RTE.	SECTION	COUNTY	TOTAL SHEETS	SHEET NO.
39	50(1-8)PP-18	LASALLE	22	21
CONTRACT NO. 66P38				
ILLINOIS FED. AID PROJECT				



TYPICAL PAVEMENT MARKING FOR ENTRANCE RAMP TERMINALS



TYPICAL PAVEMENT MARKINGS



EXIT RAMP GORE DETAIL

MODEL: Default
FILE NAME: c:\pwworking\woodshank\10270654\66P38.dgn

USER NAME = ronald.woodshank	DESIGNED - RW	REVISED -
	DRAWN - RW	REVISED -
PLOT SCALE = \$SCALE\$	CHECKED - YP	REVISED -
PLOT DATE = 2/27/2024	DATE - 1/16/2024	REVISED -

**STATE OF ILLINOIS
DEPARTMENT OF TRANSPORTATION**

TYPICAL PAVEMENT MARKING

SCALE: SHEET 1 OF 1 SHEETS STA. TO STA.

F.A.I. RTE.	SECTION	COUNTY	TOTAL SHEETS	SHEET NO.
39	50(1-8)PP-18	LASALLE	22	22
CONTRACT NO. 66P38				
ILLINOIS FED. AID PROJECT				