

STATE OF ILLINOIS
DEPARTMENT OF TRANSPORTATION

*BROWN/MASON		F.A. RTE.	SECTION	COUNTY	TOTAL SHEETS	SHEET NO.
VAR	D6 ITS 2024				17	1
				ILLINOIS	CONTRACT NO. 72733	

FOR INDEX OF SHEETS, SEE SHEET NO. 2

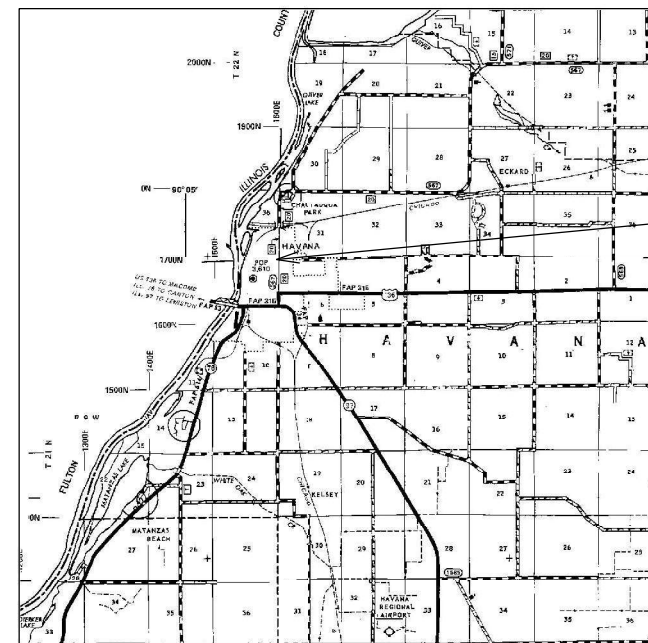
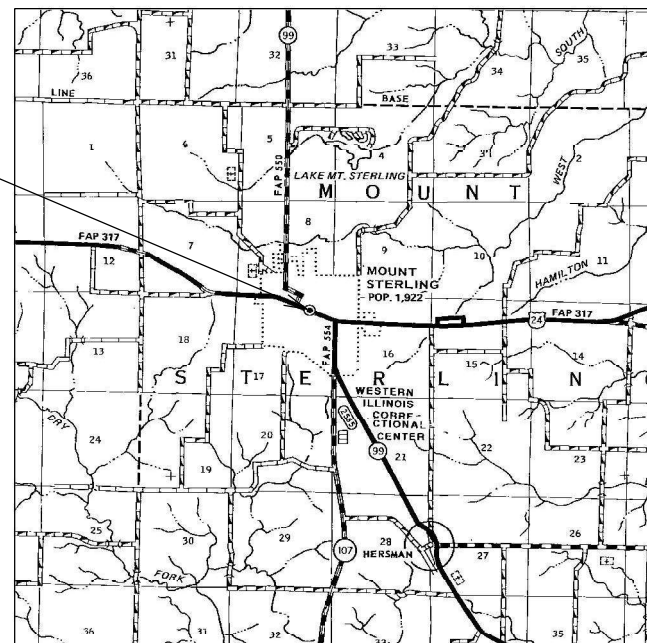
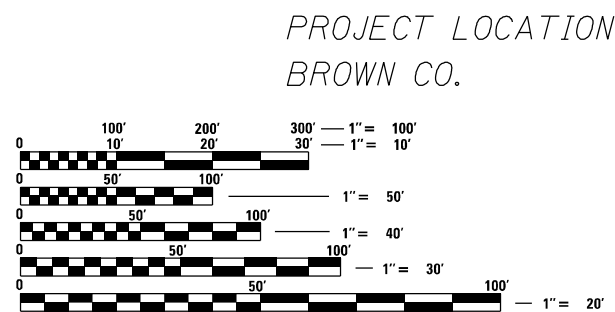
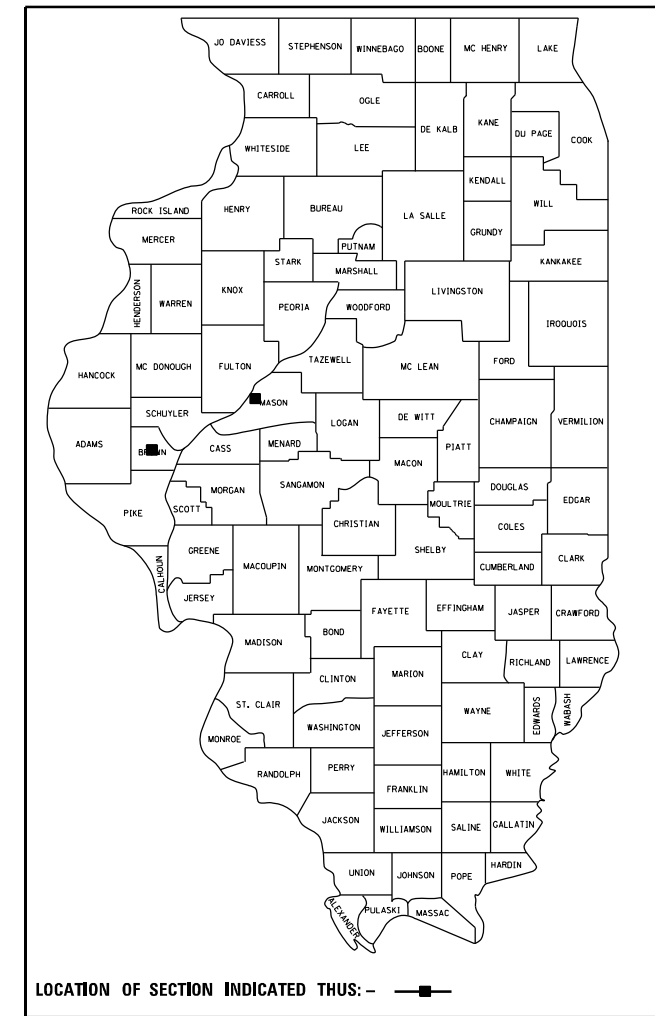
PROPOSED
IMPROVEMENTS

VARIOUS
(VARIOUS)
SECTION D6 ITS 2024

BROWN/MASON

C-96-041-24

D-96-025-24



PROJECT LOCATION
MASON CO.

FULL SIZE PLANS HAVE BEEN PREPARED USING STANDARD ENGINEERING SCALES. REDUCED SIZED PLANS WILL NOT CONFORM TO STANDARD SCALES. IN MAKING MEASUREMENTS ON REDUCED PLANS, THE ABOVE SCALES MAY BE USED.

J.U.L.I.E.
JOINT UTILITY LOCATION INFORMATION FOR EXCAVATION
1-800-892-0123
OR 811

PROJECT ENGINEER : MIKE HAMBY - (217)524-7765
PROJECT MANAGER : TIM SHARP - (217)524-9160

CONTRACT NO. 72733

STATE OF ILLINOIS
DEPARTMENT OF TRANSPORTATION

SUBMITTED March 27, 2024

John P. Meyer
REGION FOUR ENGINEER

May 10, 2024
John A. Ebersole
ENGINEER OF DESIGN AND ENVIRONMENT

May 10, 2024
Stephen McSwain
DIRECTOR OF HIGHWAYS PROJECT IMPLEMENTATION

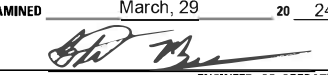
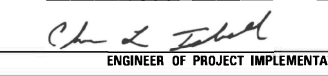

PRINTED BY THE AUTHORITY
OF THE STATE OF ILLINOIS

INDEX OF SHEETS

- 1 COVER SHEET
- 2 INDEX OF SHEETS, GENERAL NOTES, SIGNATURES, STANDARDS
- 3 SUMMARY OF QUANTITIES
- 4 LEGEND AND NOTES
- 5-6 LOCATION PLAN
- 7-12 PLANS
- 13-17 VIDEO VEHICLE DETECTION PLAN

HIGHWAY STANDARDS

- 000001-08 STANDARD SYMBOLS, ABBREVIATIONS AND PATTERNS
- 001006 DECIMAL OF AN INCH AND OF A FOOT
- 420001-10 PAVEMENT JOINTS
- 701001-02 OFF-RD OPERATIONS, 2L, 2W, MORE THAN 15' (4.5 m) AWAY
- 701006-05 OFF-RD OPERATIONS, 2L, 2W, 15' (4.5 m) TO 24" (600mm) FROM PAVEMENT EDGE
- 701101-05 OFF-RD OPERATIONS, MULTILANE, 15' (4.5 m) TO 24" (600mm) FROM EDGE OF PAVEMENT
- 701106-02 OFF-RD OPERATIONS, MULTILANE, MORE THAN 15' (4.5m) AWAY
- 701201-05 LANE CLOSURE, 2L, 2W, DAY ONLY, FOR SPEEDS > 45 MPH
- 701502-09 URBAN LANE CLOSURE, 2L, 2W, WITH BIDIRECTIONAL LEFT TURN LANE
- 701601-09 URBAN LANE CLOSURE, MULTILANE, 1W OR 2W WITH NONTRANSVERSABLE MEDIAN
- 701602-10 URBAN LANE CLOSURE, MULTILANE, 2W WITH BIDIRECTIONAL LEFT TURN LANE
- 701701-10 URBAN LANE CLOSURE, MULTILANE INTERSECTION
- 701901-09 TRAFFIC CONTROL DEVICES
- 814001-03 HANDHOLES
- 857001-01 STANDARD PHASE DESIGNATION DIAGRAMS AND PHASE SEQUENCES

STATE OF ILLINOIS DEPARTMENT OF TRANSPORTATION DIVISION OF HIGHWAYS DISTRICT 6	
EXAMINED _____	March, 29 _____ 20 24
 ENGINEER OF OPERATIONS	
EXAMINED _____	March, 29 _____ 20 24
 ENGINEER OF PROJECT IMPLEMENTATION	
EXAMINED _____	March, 29 _____ 20 24
 ENGINEER OF PROGRAM DEVELOPMENT	

REV. - MS

FILE NAME =	USER NAME = Timothy.Sharp	DESIGNED - DMS 2/2017	REVISED -	STATE OF ILLINOIS DEPARTMENT OF TRANSPORTATION	INDEX OF SHEETS, GENERAL NOTES, SIGNATURES	F.A. RTE.	SECTION	COUNTY	TOTAL SHEETS	SHEET NO.	
S:\CONTRMAINT_CAD\72733 - VARIOUS (VAR)	USIHAYANA - MT. STERLING -ITS - MASON - BROWN	DRAWN 6-14-2024\MS 2/2017	REVISED -			VAR	ITS D6 2024	*	17	2	
Default	PLOT SCALE = 40.0000' / in.	CHECKED -	REVISED -			SCALE: SHEET 1 OF 1 SHEETS STA. TO STA.		CONTRACT NO. 72733			
	PLOT DATE = 3/27/2024	DATE -	REVISED -			*BROWN/MASON ILLINOIS FED. AID PROJECT					

CODE NO.	ITEM	UNIT	TOTAL QUANTITY	6-00338-9983	6-00338-9983
				100% STATE BROWN	100% STATE MASON
				ROADWAY 0043 RURAL	ROADWAY 0043 RURAL
42400100	PORTLAND CEMENT CONCRETE SIDEWALK 4 INCH	SQ FT	20	0	20
44000600	SIDEWALK REMOVAL	SQ FT	20	0	20
67100100	MOBILIZATION	L SUM	1	0.5	0.5
70100450	TRAFFIC CONTROL AND PROTECTION, STANDARD 701201	L SUM	1	0.5	0.5
70102622	TRAFFIC CONTROL AND PROTECTION, STANDARD 701502	L SUM	1	0.5	0.5
70102630	TRAFFIC CONTROL AND PROTECTION, STANDARD 701601	L SUM	1	0.5	0.5
70102632	TRAFFIC CONTROL AND PROTECTION, STANDARD 701602	L SUM	1	0.5	0.5
70102635	TRAFFIC CONTROL AND PROTECTION, STANDARD 701701	L SUM	1	0.5	0.5
81028340	UNDERGROUND CONDUIT, PVC, 1 1/2" DIA.	FOOT	5346	2717	2629
85706000	INTERSECTION MONITOR UNIT	EACH	5	3	2
87900200	DRILL EXISTING HANDHOLE	EACH	5	3	2

CODE NO.	ITEM	UNIT	TOTAL QUANTITY	6-00338-9983	6-00338-9983
				100% STATE BROWN	100% STATE MASON
				ROADWAY 0043 RURAL	ROADWAY 0043 RURAL
89502210	MODIFY EXISTING CONTROLLER CABINET	EACH	5	3	2
89502375	REMOVE EXISTING TRAFFIC SIGNAL EQUIPMENT	EACH	4	2	2
X8891202	WIDE AREA VIDEO VEHICLE DETECTION SYSTEM COMPLETE	EACH	5	2	3
X8710103	ETHERNET SWITCH	EACH	5	3	2
X0326812	CAT 5 ETHERNET CABLE	FOOT	792	398	394
X0326905	CLOSED CIRCUIT TELEVISION DOME CAMERA, IP BASED	EACH	2	1	1
X1400076	COBALT CONTROLLER	EACH	5	3	2
X8140105	HANDHOLE (SPECIAL)	EACH	8	3	5
X8710029	FIBER OPTIC CABLE 24 FIBERS, SINGLE MODE	FOOT	6058	2919	3139
Z0010688	CAMERA MOUNTING ASSEMBLY	EACH	7	4	3

FILE NAME = S:\CONTRMAINT_CAD\72733 - VARIOUS (VAR)	USER NAME = Timothy.Sharp	DESIGNED - _____	REVISED - _____
	USHAVANA - MT. STERLING - ITS - MASON - BROWN	DRAWN - _____	REVISED - _____
Default	PLOT SCALE = 40.0000' / in.	CHECKED - _____	REVISED - _____
	PLOT DATE = 4/2/2024	DATE - _____	REVISED - _____

**STATE OF ILLINOIS
DEPARTMENT OF TRANSPORTATION**

SUMMARY OF QUANTITIES			
SCALE: _____	SHEET _____	OF _____ SHEETS	STA. _____ TO STA. _____

*BROWN/MASON				
F.A. RTE.	SECTION	COUNTY	TOTAL SHEETS	SHEET NO.
VAR	D6 ITS 2024	*	17	3
			CONTRACT NO. 72733	
ILLINOIS FED. AID PROJECT				

GENERAL NOTES

LEGEND

- R REMOVE
- RR REMOVE AND REPLACE
- ◻ EXISTING HANDHOLE
- ◻◻ EXISTING DOUBLE HANDHOLE
- ⊠ EXISTING CONTROLLER
- ◻◻ PROPOSED HANDHOLE
- 📷 PROPOSED CCTV CAMERA
- ◻◻ EXISTING GULF BOX JUNCTION
- — — EXISTING CONDUIT
- - - PROPOSED CONDUIT
- 📷 VIDEO VEHICLE DETECTION SYSTEM

- 1 CCTV ARE LOCATION SENSITIVE. PROPOSED EQUIPMENT LOCATIONS ARE APPROXIMATE. TO ENSURE THE OPTIMUM FIELD OF VIEW, ACTUAL LOCATIONS SHALL BE DETERMINED IN THE FIELD BY THE CONTRACTOR, PER THE MANUFACTURER REPRESENTATIVES RECOMMENDATIONS AND THE ENGINEERS APPROVAL.
- 2 PLAN ELEVATIONS - U.S.G.S. MEAN SEA LEVEL DATUM.
- 3 ALL ELEVATIONS SHOWN ON THE PLANS ARE ESTABLISHED FORM U.S.G.S. MEAN SEA LEVEL DATUM.
- 4 U-BOLTS SHALL BE PRODUCED FROM ASTM A276, TYPE 304, 304L, 316, CONDITION A , COLD FINISH, OR AN EQUIVALENT MATERIAL ACCEPTABLE TO THE ENGINEER. ALL NUTS SHALL BE STAINLESS STEEL CONFORMING TO ASTM A194, GRADE 8 (AISI TYPE 304) OR GRADE 8F (AISI TYPE 303). THE NUTS SHALL BE LOCKNUTS WITH NYLON OR STEEL INSERTS AND SEMI FINISHED HEXAGONAL HEADS EQUIVALENT TO THE FINISHED HEX SERIES OF THE AMERICAN NATIONAL STANDARD. ALL WASHERS SHALL BE STAINLESS STEEL CONFORMING TO ASTM 240, TYPE 302 OR 304.
- 5 ALL BOLTS, SCREWS, NUTS AND WASHERS SHALL BE STAINLESS STEEL. ANTI-SEIZE PASTE COMPOUND SHALL BE USED ON ALL MOUNTING HARDWARE FIELD CONNECTIONS. ALL CCTV MOUNTING METHODS AND MOUNTING MATERIAL SHALL BE PRE- APPROVED BY THE ENGINEER.
- 6 UNDERGROUND CABLE MARKING TAPE SHALL BE INSTALLED WITH ALL TRENCH & BACKFILL FOR ELECTRICAL WORK IN ACCORDANCE WITH ARTICLES 815.03 (d) & 1066.05 OF THE STANDARD SPECIFICATIONS.
- 7 A 1/4" DIA. NYLON ROPE SHALL BE INSTALLED IN ALL CONDUIT RUNS. THE COST OF PULL ROPE SHALL BE INCLUDED IN THE PROPOSED ELECTRIC CABLE INSTALLATION IN THAT CONDUIT.
- 8 THE CONTRACTOR SHALL NOT DRILL ANY HOLES IN THE BEAMS, DECK, OR SUBSTRUCTURE OF THE BRIDGE, UNLESS OTHERWISE APPROVED BY THE ENGINEER.
- 9 ALL GROUND RODS SUPPLIED FOR THIS PROJECT SHALL BE 3/4" DIAMETER X 12'-0" LONG.
- 10 THE LOCATION OF EXISTING WATER MAINS, GAS MAINS, SEWERS, ELECTRIC POWER LINES, TELEPHONE LINES AND OTHER UTILITIES AS SHOWN ON THE PLANS ARE BASED ON CAREFUL FIELD INVESTIGATION AND THE BEST INFORMATION AVAILABLE, BUT THEY ARE NOT GUARANTEED. IT SHALL BE THE CONTRACTOR'S RESPONSIBILITY TO ASCERTAIN THEIR EXACT LOCATION FROM THE UTILITY COMPANIES AND BY FIELD INSPECTION.
- 11 ALL UTILITIES SHALL BE LOCATED IN FIELD PRIOR TO ANY ATTEMPT TO CONSTRUCT ANY COMPONENT OF THE VARIOUS CCTV CAMERA SYSTEM. ILLINOIS STATE LAW REQUIRES A 48-HOUR NOTICE BE GIVEN TO UTILITIES BEFORE DIGGING. FIELD MARKING OF FACILITIES MAY BE OBTAINED BY PROVIDING A MINIMUM OF 96-HOURS ADVANCE NOTICE TO THE RESIDENT ENGINEER SO THAT THE UTILITY COMPANIES CAN BE NOTIFIED.
- 12 COORDINATION WITH THE DEPARTMENTS BUREAU OF OPERATIONS IS REQUIRED BEFORE ANY TRENCHING SHALL BE DONE TO LOCATE HIGHWAY LIGHTING/PUMP STATION FACILITIES. PH: (217)558-6716 OR (217)622-0608.
- 13 THE AREAS THAT ARE DISTURBED DUE TO THE DIGGING OR TRENCHING SHALL BE COMPLETED ON A WEEKLY BASIS USING SEEDING, CLASS 2 AND MULCH METHOD 1 AND SHALL CONFORM TO THE REQUIREMENTS OF SECTION 251 OF THE STANDARD SPECIFICATIONS EXCEPT THAT NO EMULSIFIED ASPHALT SHALL BE USED. THE COST SHALL BE INCIDENTAL TO THE CONTRACT.
- 14 THE CONTRACTOR MUST COORDINATE AND COOPERATE WITH THE DEPARTMENT AND THE INVOLVED PARTIES AS DIRECTED BY THE DEPARTMENT
- 15 EXISTING CONDUIT AND PULL POINT LOCATIONS TAKEN FROM HISTORICAL DATA. CONTRACTOR SHALL FIELD VERIFY EXISTING CONDUIT SIZES AND LOCATIONS PRIOR TO INSTALLING PROPOSED FIBER OPTIC CABLE WITHIN EXISTING CONDUIT.
- 16 BENDING RADIUS OF FIBER OPTIC CABLE SHALL NOT EXCEED SIX (6) INCHES.
- 17 EXACT FIELD LOCATIONS OF ITS EQUIPMENT SHALL BE AS DIRECTED BY THE ENGINEER. THE CONTRACTOR SHALL TAKE CARE NOT TO INSTALL ITS EQUIPMENT IN DRAINAGE AREAS.
- 18 THE CONTRACTOR SHALL SUBMIT SHOP DRAWINGS, CONSTRUCTION METHODOLOGIES, PRODUCT MANUFACTURER SPECIFICATIONS, OWNERS MANUALS, AND USER MANUALS BEFORE PROCURING AND INSTALLING ANY ITS EQUIPMENT AS PART OF THIS CONTRACT. ALL PROPOSED ITS WORK SHALL BE REVIEWED AND APPROVED BY THE DEPARTMENT.
- 19 THE CONTRACTOR SHALL BE RESPONSIBLE FOR COORDINATING TRAFFIC CONTROL FOR THE INSTALLATION OF ITS RELATED EQUIPMENT WITH OTHER CONTRACTS AND WORK IN THE AREA.

*BROWN/MASON

FILE NAME =	USER NAME = Timothy.Sharp	DESIGNED - _____	REVISED - _____	STATE OF ILLINOIS DEPARTMENT OF TRANSPORTATION	LEGEND AND NOTES			F.A. RTE.	SECTION	COUNTY	TOTAL SHEETS	SHEET NO.	
S:\CONTRMINT_CAD\72733 - VARIOUS (VAR)	USIHAVANA - MT. STERLING -ITS - MASON - BROWN	DRAWN 6-14-2024\plans\72733-sht-4-ubr-1	REVISED - _____		SCALE: _____	SHEET _____	OF _____	SHEETS	STA. _____	TO STA. _____	ILLINOIS	FED. AID PROJECT	
Default	PLOT SCALE = 1.0000' / in.	CHECKED - _____	REVISED - _____										
	PLOT DATE = 3/25/2024	DATE - _____	REVISED - _____										

CONTRACT NO. 72733

BEGIN PROJECT



END PROJECT

FILE NAME =	USER NAME = Timothy.Sharp	DESIGNED - _____	REVISED - _____
S:\CONTRMINT_CAD\72733 - VARIOUS (VAR)	USHAVANA - MT. STERLING - ITS - MASON - BROWN	DRAWN 6-14-2024 \plens\72733-sht-5-6-pl	REVISED - _____
Default	PLOT SCALE = 40.0000' / in.	CHECKED - _____	REVISED - _____
	PLOT DATE = 3/25/2024	DATE - _____	REVISED - _____

**STATE OF ILLINOIS
DEPARTMENT OF TRANSPORTATION**

**LOCATION MAP
HAVANA**

SCALE: _____ SHEET _____ OF _____ SHEETS STA. _____ TO STA. _____

*BROWN/MASON

F.A. RTE.	SECTION	COUNTY	TOTAL SHEETS	SHEET NO.
VAR	06 ITS 2024	*	17	5
			CONTRACT NO. 72733	
ILLINOIS FED. AID PROJECT				

BEGIN PROJECT



END PROJECT

REV. - MS

FILE NAME =	USER NAME = Timothy.Sharp	DESIGNED -	REVISED -
S:\CONTRMNT_CAD\72733 - VARIOUS (VARIOUS) - MT. STERLING - ITS - MASON - BROWN\DRAWING-14-2024\plans\72733-ht-5-6-pl	USHAHAYANA - MT. STERLING - ITS - MASON - BROWN\DRAWING-14-2024\plans\72733-ht-5-6-pl	DRAWN -	REVISED -
Default	PLOT SCALE = 40.0000' / in.	CHECKED -	REVISED -
	PLOT DATE = 3/25/2024	DATE -	REVISED -

**STATE OF ILLINOIS
DEPARTMENT OF TRANSPORTATION**

**LOCATION MAP
MT. STERLING**

SCALE: _____ SHEET _____ OF _____ SHEETS STA. _____ TO STA. _____

•BROWN/MASON

F.A. RTE.	SECTION	COUNTY	TOTAL SHEETS	SHEET NO.
VAR	D6 ITS 2024	*	17	6
			CONTRACT NO. 72733	
ILLINOIS FED. AID PROJECT				



CODE NO.	SCHEDULE OF QUANTITIES	UNIT	TOTAL QUANTITY
81028340	UNDERGROUND CONDUIT, PVC, 1 1/2" DIA.	FOOT	365
87900200	DRILL EXISTING HANDHOLE	EACH	2
89502210	MODIFY EXISTING CONTROLLER CABINET	EACH	2
X8710029	FIBER OPTIC CABLE 24 FIBERS, SINGLE MODE	FOOT	478

MODEL: D:\p\h\... FILE NAME: S:\CONTRACT\CA072733 - VARIOUS (VARIOUS)\HAWANA - NT, STERLING, ITS - MASON - BROWN CO - (6-14-2024)\d\h\...72733-dh-21-12-Renewal.docx

USER NAME = Timothy,Sharp	DESIGNED - _____	REVISED - _____
PLOT SCALE = 1,0000' / in.	DRAWN - _____	REVISED - _____
PLOT DATE = 3/25/2024	CHECKED - _____	REVISED - _____
	DATE - _____	REVISED - _____

**STATE OF ILLINOIS
DEPARTMENT OF TRANSPORTATION**

HAVANA PLAN

SCALE: _____ SHEET ____ OF ____ SHEETS STA. _____ TO STA. _____

*BROWN/MASON

F.A. RTE.	SECTION	COUNTY	TOTAL SHEETS	SHEET NO.
	D6 ITS 2024	*	17	7
CONTRACT NO. 72733				
ILLINOIS FED. AID PROJECT				

A MATCH LINE A

MODEL PATH: \\S:\CONTRACT\CA072733 - VARIOUS (VARIOUS)\HAWANA - NT, STERLING - ITS - MASON - BROWN CO - (6-14-2024)\dtdh\172733-dtdh-212-Revce-bns.dgn



CODE NO.	SCHEDULE OF QUANTITIES	UNIT	TOTAL QUANTITY
81028340	UNDERGROUND CONDUIT, PVC, 1 1/2" DIA.	FOOT	690
X8140105	HANDHOLE (SPECIAL)	EACH	1
X8710029	FIBER OPTIC CABLE 24 FIBERS, SINGLE MODE	FOOT	717

USER NAME = Timothy,Sharp	DESIGNED - _____	REVISED - _____
PLOT SCALE = 1,0000' / in.	DRAWN - _____	REVISED - _____
PLOT DATE = 3/25/2024	CHECKED - _____	REVISED - _____
	DATE - _____	REVISED - _____

**STATE OF ILLINOIS
DEPARTMENT OF TRANSPORTATION**

HAVANA PLAN

SCALE: _____ SHEET ____ OF ____ SHEETS STA. _____ TO STA. _____

*BROWN/MASON

F.A. RTE.	SECTION	COUNTY	TOTAL SHEETS	SHEET NO.
VAR	D6 ITS 2024	*	17	8
CONTRACT NO. 72733				
ILLINOIS FED. AID PROJECT				



CODE NO.	SCHEDULE OF QUANTITIES	UNIT	TOTAL QUANTITY
81028340	UNDERGROUND CONDUIT, PVC, 1 1/2" DIA.	FOOT	690
X8140105	HANDHOLE (SPECIAL)	EACH	1
X8710029	FIBER OPTIC CABLE 24 FIBERS, SINGLE MODE	FOOT	717

MODEL: D:\p4\h...
 FILE NAME: S:\CONTRACT\INT CAD\72733 - VARIOUS (VARIOUS)\HAWANA - NT, STERLING - ITS - MASON - BROWN CO - (6-14-2024)\d...72733-int-2-12-Renewal.dwg

USER NAME = Timothy,Sharp	DESIGNED - _____	REVISED - _____
PLOT SCALE = 1,0000 ' / in.	DRAWN - _____	REVISED - _____
PLOT DATE = 3/25/2024	CHECKED - _____	REVISED - _____
	DATE - _____	REVISED - _____

STATE OF ILLINOIS
DEPARTMENT OF TRANSPORTATION

HAVANA PLAN

SCALE: _____ SHEET ____ OF ____ SHEETS STA. _____ TO STA. _____

*BROWN/MASON

F.A. RTE.	SECTION	COUNTY	TOTAL SHEETS	SHEET NO.
VAR	D6 ITS 2024	*	17	9
CONTRACT NO. 72733				
ILLINOIS FED. AID PROJECT				



CODE NO.	SCHEDULE OF QUANTITIES	UNIT	TOTAL QUANTITY
81028340	UNDERGROUND CONDUIT, PVC, 1 1/2" DIA.	FOOT	972
87900200	DRILL EXISTING HANDHOLE	EACH	1
89502210	MODIFY EXISTING CONTROLLER CABINET	EACH	1
X8140105	HANDHOLE (SPECIAL)	EACH	1
X8710029	FIBER OPTIC CABLE 24 FIBERS, SINGLE MODE	FOOT	1007

MODEL: D:\p4\h\... FILE NAME: S:\CONTRACT\CA072733 - VARIOUS (VARIOUS)\HAVANA - NT, STERLING - ITS - MASON - BROWN CO - (6-14-2024)\h\...

USER NAME = Timothy,Sharp	DESIGNED - _____	REVISED - _____
PLOT SCALE = 1,0000' / in.	DRAWN - _____	REVISED - _____
PLOT DATE = 3/25/2024	CHECKED - _____	REVISED - _____
	DATE - _____	REVISED - _____

STATE OF ILLINOIS
DEPARTMENT OF TRANSPORTATION

HAVANA PLAN

SCALE: _____ SHEET _____ OF _____ SHEETS STA. _____ TO STA. _____

*BROWN/MASON

F.A. RTE.	SECTION	COUNTY	TOTAL SHEETS	SHEET NO.
VAR	D6 ITS 2024	*	17	10
			CONTRACT NO. 72733	
ILLINOIS FED. AID PROJECT				



CODE NO.	SCHEDULE OF QUANTITIES	UNIT	TOTAL QUANTITY
42400100	SIDEWALK REMOVAL	SQ FT	20
44000600	PORTLAND CEMENT CONCRETE SIDEWALK 4 INCH	SQ FT	20
81028340	UNDERGROUND CONDUIT, PVC, 1 1/2" DIA.	FOOT	1052
87900200	DRILL EXISTING HANDHOLE	EACH	1
89502210	MODIFY EXISTING CONTROLLER CABINET	EACH	1
X8140105	HANDHOLE (SPECIAL)	EACH	2
X8710029	FIBER OPTIC CABLE 24 FIBERS, SINGLE MODE	FOOT	1122

MODEL: D:\p\h\p\...
 FILE NAME: S:\CONTRACT\MT - VARIOUS (VARIOUS)\HAYANA - NT, STERLING - ITS - MASON - BROWN CO - (6-14-2024)\d\h\...72733-dh-z1-12-Rbrown-bns.dgn

USER NAME = Timothy,Sharp	DESIGNED - _____	REVISED - _____
PLOT SCALE = 1,0000' / in.	DRAWN - _____	REVISED - _____
PLOT DATE = 3/25/2024	CHECKED - _____	REVISED - _____
	DATE - _____	REVISED - _____

STATE OF ILLINOIS
DEPARTMENT OF TRANSPORTATION

MT. STERLING PLAN

SCALE: _____ SHEET _____ OF _____ SHEETS STA. _____ TO STA. _____

*BROWN/MASON

F.A. RTE.	SECTION	COUNTY	TOTAL SHEETS	SHEET NO.
VAR	D6 ITS 2024	*	17	11
CONTRACT NO. 72733				
ILLINOIS FED. AID PROJECT				



CODE NO.	SCHEDULE OF QUANTITIES	UNIT	TOTAL QUANTITY
81028340	UNDERGROUND CONDUIT, PVC, 1 1/2" DIA.	FOOT	1577
87900200	DRILL EXISTING HANDHOLE	EACH	1
89502210	MODIFY EXISTING CONTROLLER CABINET	EACH	1
X8140105	HANDHOLE (SPECIAL)	EACH	3
X8710029	FIBER OPTIC CABLE 24 FIBERS, SINGLE MODE	FOOT	2017

LEAVE 100' OF SLACK FOR FIBER OPTIC CABLE

MODEL: D:\p\h\p\... FILE NAME: S:\CONTRACT\MT CAD\72733 - VARIOUS (VARIOUS)HAYANA - NT, STERLING - ITS - MASON - BROWN CO - (6-14-2024)\d\h\...72733-nt-212-Rev-03.dwg

*BROWN/MASON

USER NAME = Timothy,Sharp	DESIGNED - _____	REVISED - _____
PLOT SCALE = 1,000' / in.	CHECKED - _____	REVISED - _____
PLOT DATE = 3/25/2024	DATE - _____	REVISED - _____

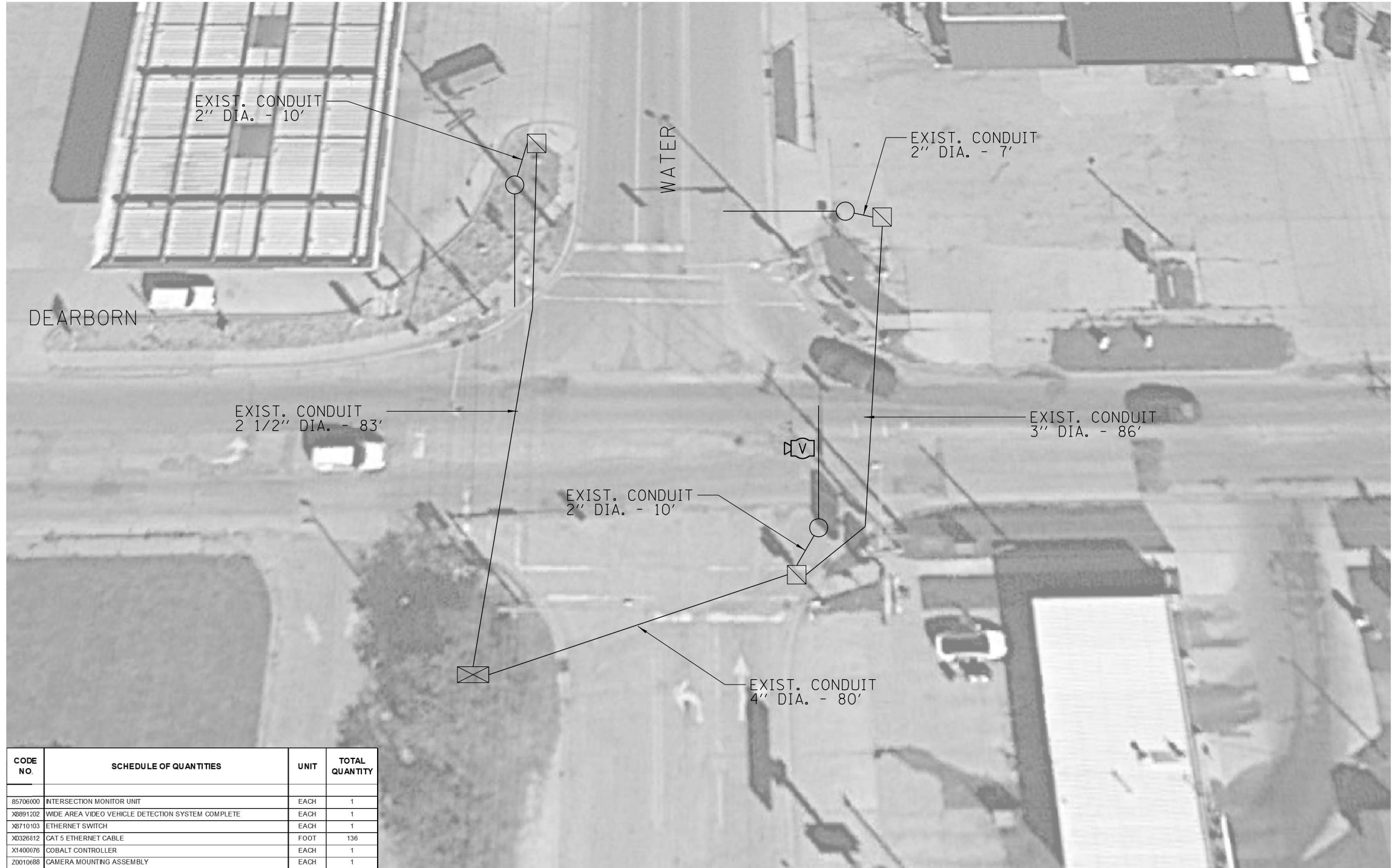
**STATE OF ILLINOIS
DEPARTMENT OF TRANSPORTATION**

MT. STERLING PLAN

SCALE: _____ SHEET _____ OF _____ SHEETS STA. _____ TO STA. _____

F.A. RTE.	SECTION	COUNTY	TOTAL SHEETS	SHEET NO.
VAR	D6 ITS 2024	BROW/MAS	17	12
CONTRACT NO. 72733				

ILLINOIS FED. AID PROJECT



CODE NO.	SCHEDULE OF QUANTITIES	UNIT	TOTAL QUANTITY
85706000	INTERSECTION MONITOR UNIT	EACH	1
X8891202	WIDE AREA VIDEO VEHICLE DETECTION SYSTEM COMPLETE	EACH	1
X8710103	ETHERNET SWITCH	EACH	1
X0326812	CAT 5 ETHERNET CABLE	FOOT	136
X1400076	COBALT CONTROLLER	EACH	1
Z0010688	CAMERA MOUNTING ASSEMBLY	EACH	1

DEARBORN AND WATER

MODEL: D:\p4\h\...
 FILE NAME: S:\CONTRACTS\72733 - VARIOUS (VARIOUS)\HAWANA - NT - STERLING - ITS - MASON - BROWN CO - (6-14-2024)\d\h\72733-dh-13-17-contra.dgn

USER NAME = Timothy.Sharp	DESIGNED - _____	REVISED - _____
PLOT SCALE = 1000.0000 ' / in.	CHECKED - _____	REVISED - _____
PLOT DATE = 3/26/2024	DATE - _____	REVISED - _____

**STATE OF ILLINOIS
DEPARTMENT OF TRANSPORTATION**

HAVANA CAMERA

SCALE: _____ SHEET ____ OF ____ SHEETS STA. _____ TO STA. _____

*BROWN/MASON

F.A. RTE.	SECTION	COUNTY	TOTAL SHEETS	SHEET NO.
VAR	D6 ITS 2024	*	17	13
CONTRACT NO. 72733			ILLINOIS FED. AID PROJECT	



CODE NO.	SCHEDULE OF QUANTITIES	UNIT	TOTAL QUANTITY
85706000	INTERSECTION MONITOR UNIT	EACH	1
89502375	REMOVE EXISTING TRAFFIC SIGNAL EQUIPMENT	EACH	1
X8891202	WIDE AREA VIDEO VEHICLE DETECTION SYSTEM COMPLETE	EACH	1
X8710103	ETHERNET SWITCH	EACH	1
X0326812	CAT 5 ETHERNET CABLE	FOOT	102
X0326905	CLOSED CIRCUIT TELEVISION DOME CAMERA, IP BASED	EACH	1
X1400076	COBALT CONTROLLER	EACH	1
Z0010688	CAMERA MOUNTING ASSEMBLY	EACH	2

89502375 - REMOVE EXIST. TRAFFIC SIGNAL EQUIPMENT	UNIT	TOTAL QUANTITY
ITEM TO BE REMOVED		
AUTOSCOPE SOLO CAMERA	EACH	4
AUTO SCOPE CAMERA MOUNTING BRACKET	EACH	4
AUTOSCOPE CAMERA CABLE	EACH	4
AUTOSCOPE ACIP BOARD	EACH	1
AUTOSCOPE MINI HUB	EACH	1
ALL TRAFFIC SIGNAL REMOVAL ITEMS SHALL BECOME PROPERTY OF IDOT DISTRICT 6		

DEARBORN AND SCHRADER

MODEL: D:\p4\h\p...
 FILE NAME: S:\CONTRACTS\CA072733 - VARIOUS MAINTENANCE - NT, STERLING - ITS - MASON - BROWN CO - (6-14-2024)\d\h\072733-rh-13-17-contract.dgn

USER NAME = Timothy.Sharp	DESIGNED - _____	REVISED - _____
PLOT SCALE = 1000.0000 ' / in.	CHECKED - _____	REVISED - _____
PLOT DATE = 3/26/2024	DATE - _____	REVISED - _____

**STATE OF ILLINOIS
DEPARTMENT OF TRANSPORTATION**

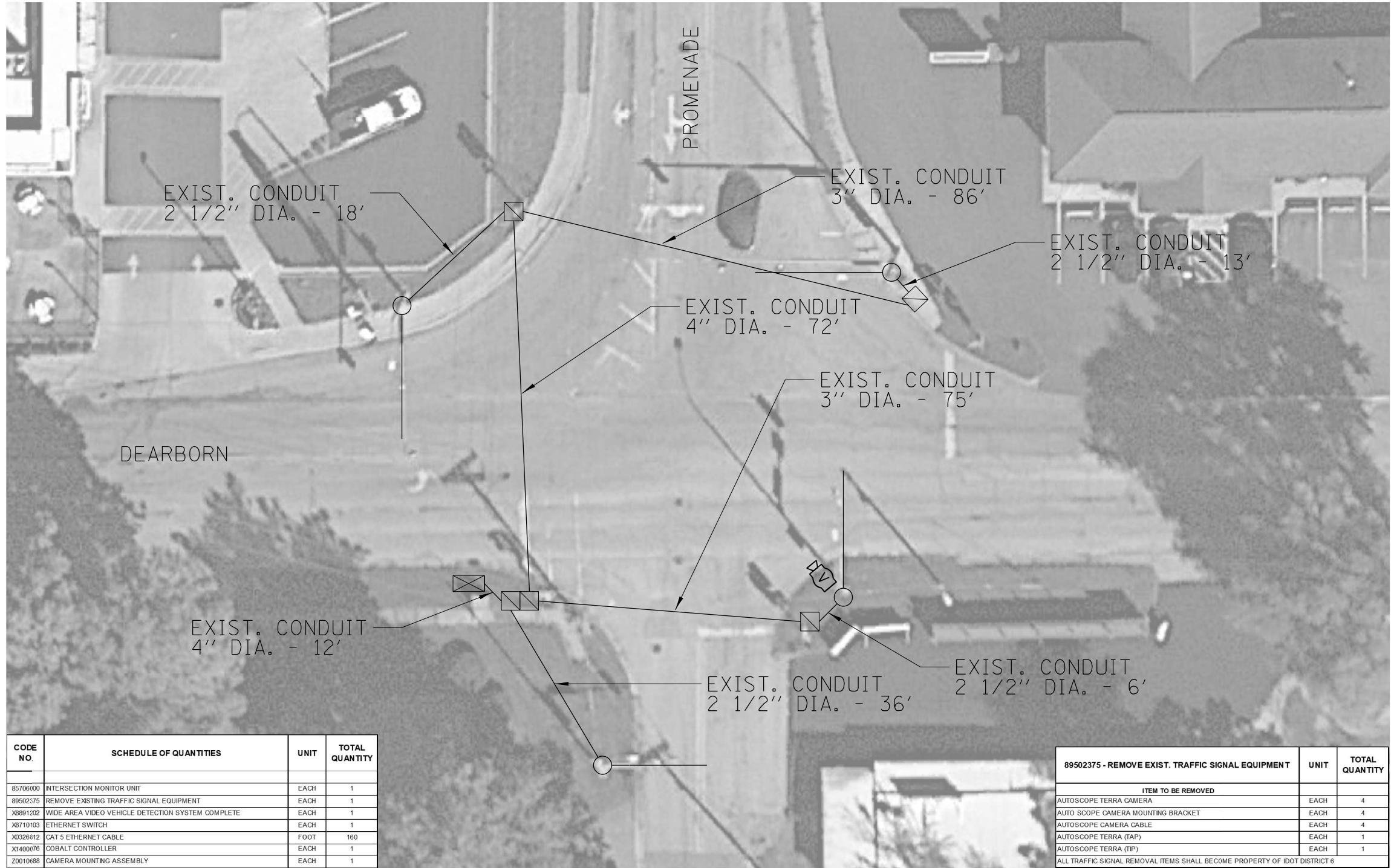
HAVANA CAMERA

SCALE: _____ SHEET _____ OF _____ SHEETS STA. _____ TO STA. _____

*BROWN/MASON

F.A. RTE.	SECTION	COUNTY	TOTAL SHEETS	SHEET NO.
VAR	D6 ITS 2024	*	17	14
CONTRACT NO. 72733				

ILLINOIS FED. AID PROJECT



CODE NO.	SCHEDULE OF QUANTITIES	UNIT	TOTAL QUANTITY
85706000	INTERSECTION MONITOR UNIT	EACH	1
89502375	REMOVE EXISTING TRAFFIC SIGNAL EQUIPMENT	EACH	1
X8891202	WIDE AREA VIDEO VEHICLE DETECTION SYSTEM COMPLETE	EACH	1
X8710103	ETHERNET SWITCH	EACH	1
X0326812	CAT 5 ETHERNET CABLE	FOOT	160
X1400076	COBALT CONTROLLER	EACH	1
Z0010688	CAMERA MOUNTING ASSEMBLY	EACH	1

89502375 - REMOVE EXIST. TRAFFIC SIGNAL EQUIPMENT	UNIT	TOTAL QUANTITY
ITEM TO BE REMOVED		
AUTOSCOPE TERRA CAMERA	EACH	4
AUTO SCOPE CAMERA MOUNTING BRACKET	EACH	4
AUTOSCOPE CAMERA CABLE	EACH	4
AUTOSCOPE TERRA (IAP)	EACH	1
AUTOSCOPE TERRA (IP)	EACH	1
ALL TRAFFIC SIGNAL REMOVAL ITEMS SHALL BECOME PROPERTY OF IDOT DISTRICT 6		

DEARBORN AND PROMENADE

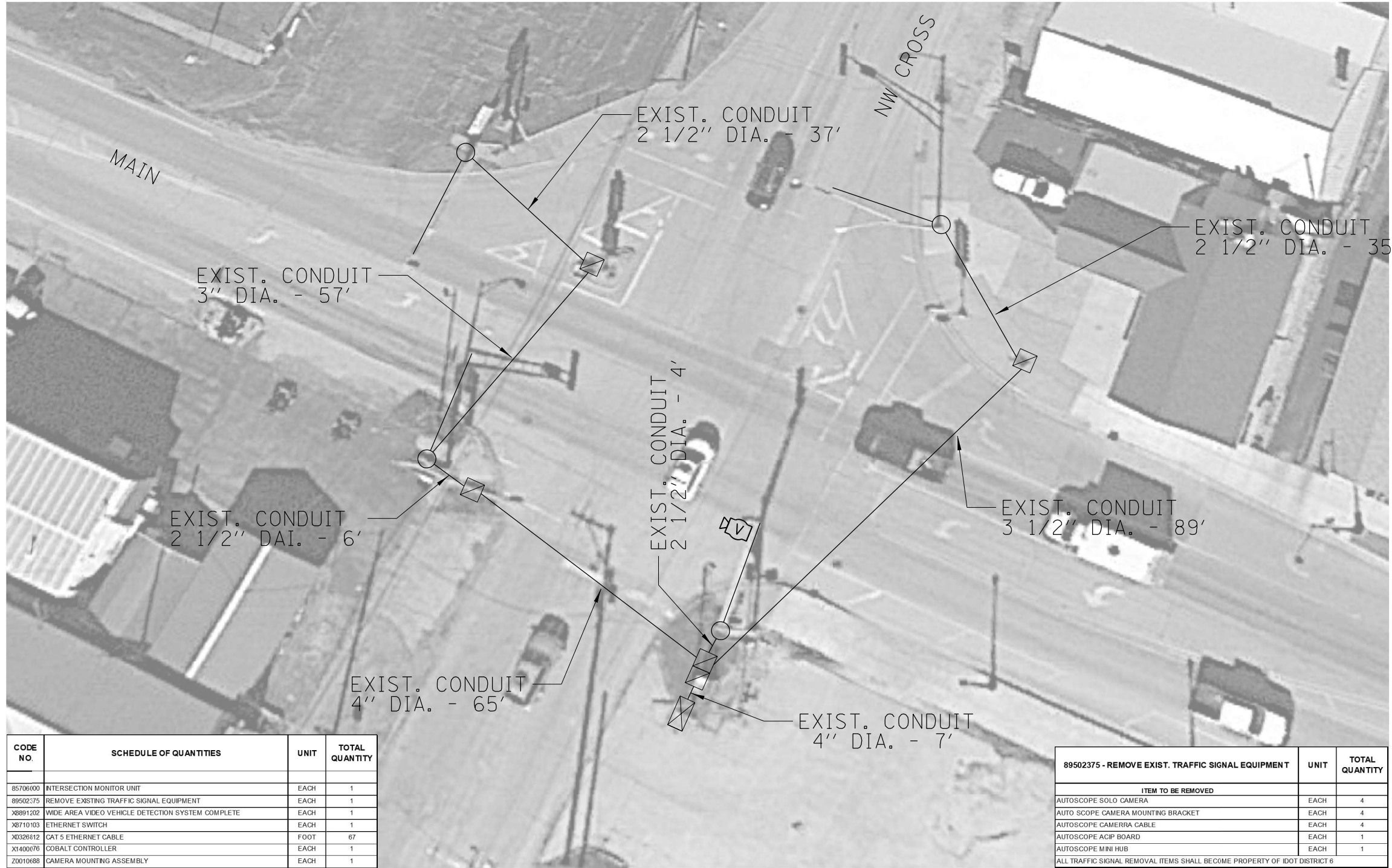
MODEL: D:\64bit\... FILE NAME: S:\CONTRACT\MAINT_CAD\72733 - VARIOUS (VARIOUS)\HAVANA - NT, STERLING - ITS - MASON - BROWN CO - (6-14-2024)\idb\8172733-dt-13-17-contract.dgn

USER NAME = Timothy.Sharp	DESIGNED - _____	REVISED - _____
PLOT SCALE = 1000.0000 ' / in.	CHECKED - _____	REVISED - _____
PLOT DATE = 3/26/2024	DATE - _____	REVISED - _____

**STATE OF ILLINOIS
DEPARTMENT OF TRANSPORTATION**

HAVANA CAMERA	
SCALE: _____	SHEET ____ OF ____ SHEETS STA. _____ TO STA. _____

*BROWN/MASON				
F.A. RTE.	SECTION	COUNTY	TOTAL SHEETS	SHEET NO.
VAR	D6 ITS 2024	*	17	15
CONTRACT NO. 72733				
ILLINOIS FED. AID PROJECT				



CODE NO.	SCHEDULE OF QUANTITIES	UNIT	TOTAL QUANTITY
85706000	INTERSECTION MONITOR UNIT	EACH	1
89502375	REMOVE EXISTING TRAFFIC SIGNAL EQUIPMENT	EACH	1
X8891202	WIDE AREA VIDEO VEHICLE DETECTION SYSTEM COMPLETE	EACH	1
X8710103	ETHERNET SWITCH	EACH	1
X0326812	CAT 5 ETHERNET CABLE	FOOT	67
X1400076	COBALT CONTROLLER	EACH	1
Z0010688	CAMERA MOUNTING ASSEMBLY	EACH	1

89502375 - REMOVE EXIST. TRAFFIC SIGNAL EQUIPMENT	UNIT	TOTAL QUANTITY
ITEM TO BE REMOVED		
AUTOSCOPE SOLO CAMERA	EACH	4
AUTO SCOPE CAMERA MOUNTING BRACKET	EACH	4
AUTOSCOPE CAMERA CABLE	EACH	4
AUTOSCOPE ACIP BOARD	EACH	1
AUTOSCOPE MINI HUB	EACH	1
ALL TRAFFIC SIGNAL REMOVAL ITEMS SHALL BECOME PROPERTY OF IDOT DISTRICT 6		

MAIN AND NW CROSS

MODEL: D:\64bit\... FILE NAME: S:\CONTRACTS\... - VARIOUS (VARIOUS)\SHAVANA - NT, STERLING - ITS - MASON - BROWN CO - (6-14-2024)\idb\...-72733-dt-13-17-comps.dgn

USER NAME = Timothy.Sharp	DESIGNED - _____	REVISED - _____
PLOT SCALE = 1000.0000 ' / in.	CHECKED - _____	REVISED - _____
PLOT DATE = 3/26/2024	DATE - _____	REVISED - _____

**STATE OF ILLINOIS
DEPARTMENT OF TRANSPORTATION**

MT. STERLING CAMERA

SCALE: _____ SHEET _____ OF _____ SHEETS STA. _____ TO STA. _____

*BROWN/MASON

F.A. RTE.	SECTION	COUNTY	TOTAL SHEETS	SHEET NO.
VAR	D6 ITS 2024	*	17	16
CONTRACT NO. 72733			ILLINOIS FED. AID PROJECT	



SCHEDULE OF QUANTITIES	UNIT	TOTAL QUANTITY
INTERSECTION MONITOR UNIT	EACH	1
REMOVE EXISTING TRAFFIC SIGNAL EQUIPMENT	EACH	1
WIDE AREA VIDEO VEHICLE DETECTION SYSTEM COMPLETE	EACH	1
ETHERNET SWITCH	EACH	1
CAT 5 ETHERNET CABLE	FOOT	327
CLOSED CIRCUIT TELEVISION DOME CAMERA, IP BASED	EACH	1
COBAL™ CONTROLLER	EACH	1
CAMERA MOUNTING ASSEMBLY	EACH	2

89502375 - REMOVE EXIST. TRAFFIC SIGNAL EQUIPMENT	UNIT	TOTAL QUANTITY
ITEM TO BE REMOVED		
AUTOSCOPE SOLO CAMERA	EACH	4
AUTO SCOPE CAMERA MOUNTING BRACKET	EACH	4
AUTOSCOPE CAMERA CABLE	EACH	4
AUTOSCOPE ACIP BOARD	EACH	1
AUTOSCOPE MINI HUB	EACH	1
ALL TRAFFIC SIGNAL REMOVAL ITEMS SHALL BECOME PROPERTY OF IDOT DISTRICT 6		

MAIN AND PITTSFIELD

MODEL PATH: S:\CONTRACTS\CAD\72733 - VARIOUS (VARIOUS)\SHAVANA - NT - STERLING - ITS - MASON - BROWN CO - (6-14-2024)\dtd-13172733-dt-13-17-contract.dgn
 FILE NAME: S:\CONTRACTS\CAD\72733 - VARIOUS (VARIOUS)\SHAVANA - NT - STERLING - ITS - MASON - BROWN CO - (6-14-2024)\dtd-13172733-dt-13-17-contract.dgn

USER NAME = Timothy.Sharp	DESIGNED - _____	REVISED - _____
PLOT SCALE = 1000.0000 ' / in.	CHECKED - _____	REVISED - _____
PLOT DATE = 3/26/2024	DATE - _____	REVISED - _____

**STATE OF ILLINOIS
DEPARTMENT OF TRANSPORTATION**

MT. STERLING CAMERA

SCALE: _____ SHEET _____ OF _____ SHEETS STA. _____ TO STA. _____

*BROWN/MASON				
F.A. RTE.	SECTION	COUNTY	TOTAL SHEETS	SHEET NO.
VAR	D6 ITS 2024	*	17	17
			CONTRACT NO. 72733	
ILLINOIS FED. AID PROJECT				