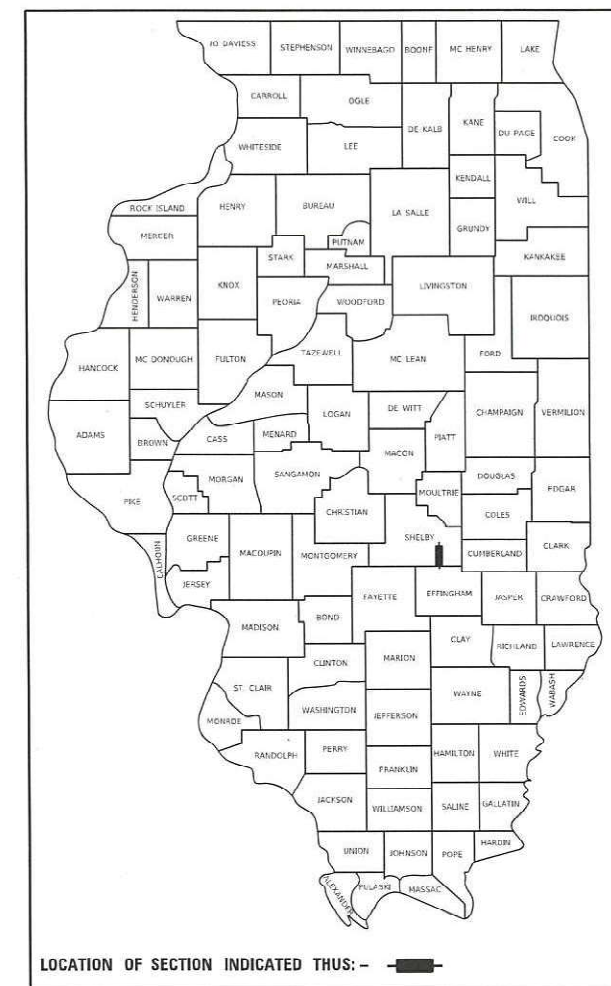


STATE OF ILLINOIS
DEPARTMENT OF TRANSPORTATION

F.A.P. RTE.	SECTION	COUNTY	TOTAL SHEETS	SHEET NO.
766	D7 AGG SHLD 2024-4	SHELBY	3	1
		ILLINOIS	CONTRACT NO. 74C77	

D-97-009-24



FOR INDEX OF SHEETS, SEE SHEET NO. 2
ADT = 4,000

PROPOSED HIGHWAY PLANS

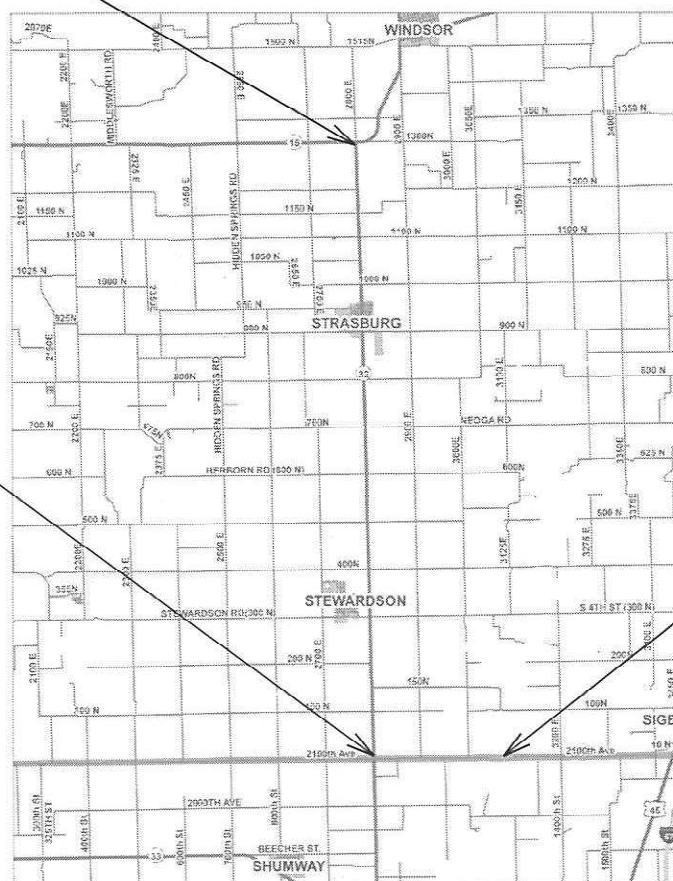
FAP ROUTE 766 (ILL 32)
SECTION D7 AGG SHLD 2024-4

SHOULDER RECONSTRUCTION
SHELBY COUNTY

C-97-009-24

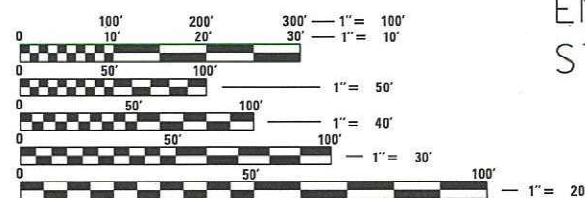
START PROJECT
STA. 13+00

END PROJECT
STA. 688+10



EFFINGHAM CO LINE

LENGTH = 13.0 MILE



FULL SIZE PLANS HAVE BEEN PREPARED USING STANDARD ENGINEERING SCALES. REDUCED SIZED PLANS WILL NOT CONFORM TO STANDARD SCALES. IN MAKING MEASUREMENTS ON REDUCED PLANS, THE ABOVE SCALES MAY BE USED.

J.U.L.I.E.
JOINT UTILITY LOCATION INFORMATION FOR EXCAVATORS
1-800-892-0123
OR 811

PROJECT ENGINEER: JACQUELYN SEALS
PROJECT MANAGER: KYLE PRICE

CONTRACT NO. 74C77

STATE OF ILLINOIS
DEPARTMENT OF TRANSPORTATION

SUBMITTED March 28 2024
Jeffrey S. Maguire
REGIONAL ENGINEER

May 10, 2024
Scott A. Etk
ENGINEER OF DESIGN AND ENVIRONMENT

May 10, 2024
Stephen M. Smith
DIRECTOR OF HIGHWAYS PROJECT IMPLEMENTATION

PRINTED BY THE AUTHORITY
OF THE STATE OF ILLINOIS

SHEET NO.	ITEM
1	COVER SHEET
2	GENERAL NOTES, INDEX OF SHEETS AND SHOULDER DETAIL
3	SUMMARY OF QUANTITIES

GENERAL NOTES

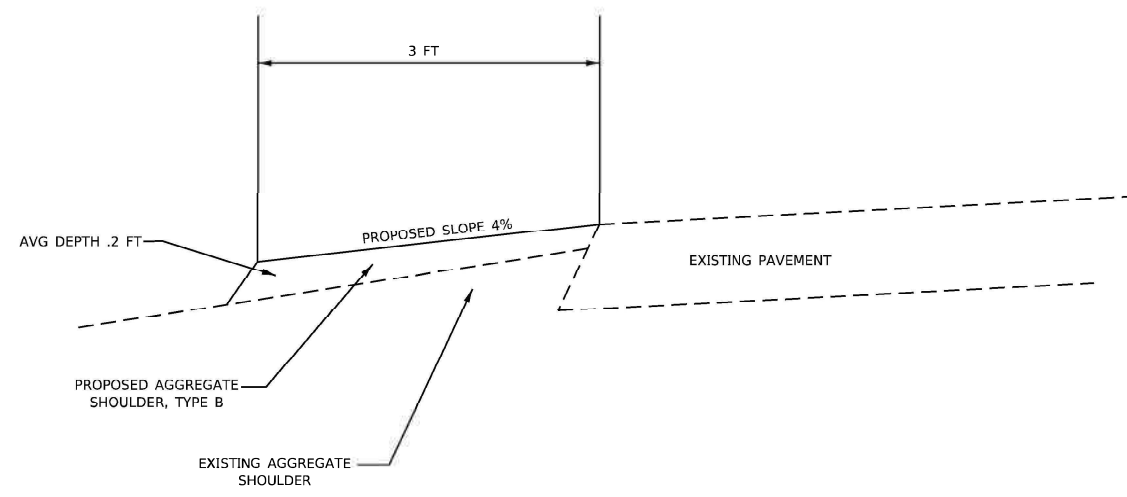
AGGREGATE FOR MAILBOX TURNOUTS AND PRIVATE ENTRANCES SHALL BE PLACED AS DIRECTED BY THE ENGINEER AND WILL BE PAID FOR AS AGGREGATE SHOULDERS, TYPE B.

A RATE OF APPLICATION OF 2.05 TONS/CU YD HAS BEEN USED IN CALCULATING PLAN QUANTITY.

RAP IS NOT ALLOWED FOR THE AGGREGATE SHOULDERS.

THE FOLLOWING STANDARDS ARE A PART OF THESE PLANS AND ARE INCLUDED AFTER SHEET NO. 3

STD. NO.	DESCRIPTION
000001 - 08	STANDARD SYMBOLS, ABBREVIATIONS, AND PATTERNS
001006	DECIMAL OF AN INCH AND OF A FOOT
406201 - 01	MAILBOX TURNOUT
701001 - 02	OFF-ROAD OPERATIONS, 2L, 2W, MORE THAN 15' (4.5 M) AWAY
701006 - 05	OFF-ROAD OPERATIONS, 2L, 2W, 15' (4.5 M) TO 24" (600 MM) FROM PAVEMENT EDGE OFF-ROAD
701011 - 04	MOVING OPERATIONS, 2L, 2W, DAY ONLY
701301 - 04	LANE CLOSURE, 2L, 2W, SHORT TIME OPERATIONS
701306 - 04	LANE CLOSURE, 2L, 2W, SLOW MOVING OPERATIONS DAY ONLY, FOR SPEEDS > 45 MPH
701901 - 09	TRAFFIC CONTROL DEVICES



SHOULDER DETAIL

REV. - MS

MODEL: Default
 FILE NAME: p:\w\ldot\pw\benley.com\p\w\dot\Documents\DOT Offices\District 3\Projects\74C77\CADD\Drawings\Drawings\74C77-shl-shoulder.dgn

USER NAME = jessica.hille	DESIGNED -	REVISED -
	DRAWN -	REVISED -
PLOT SCALE = 100.0000' / in.	CHECKED -	REVISED -
PLOT DATE = 3/28/2024	DATE -	REVISED -

**STATE OF ILLINOIS
DEPARTMENT OF TRANSPORTATION**

GENERAL NOTES, INDEX OF SHEETS, STANDARDS, & SHOULDER DETAIL

SCALE: SHEET OF SHEETS STA. TO STA.

F.A.P. RTE.	SECTION	COUNTY	TOTAL SHEETS	SHEET NO.
766	D7 AGG SHLD 2024-4	SHELBY	3	2
			CONTRACT NO. 74C77	
ILLINOIS FED. AID PROJECT				

