

STATE OF ILLINOIS
DEPARTMENT OF TRANSPORTATION

SBI RTE.	SECTION	COUNTY	TOTAL SHEETS	SHEET NO.
1E	D7 PARKING LOT IMPROV 2024-2	WABASH	6	1
		ILLINOIS	CONTRACT NO 74C79	

FOR INDEX OF SHEETS, SEE SHEET NO. 2

PROPOSED HIGHWAY PLANS

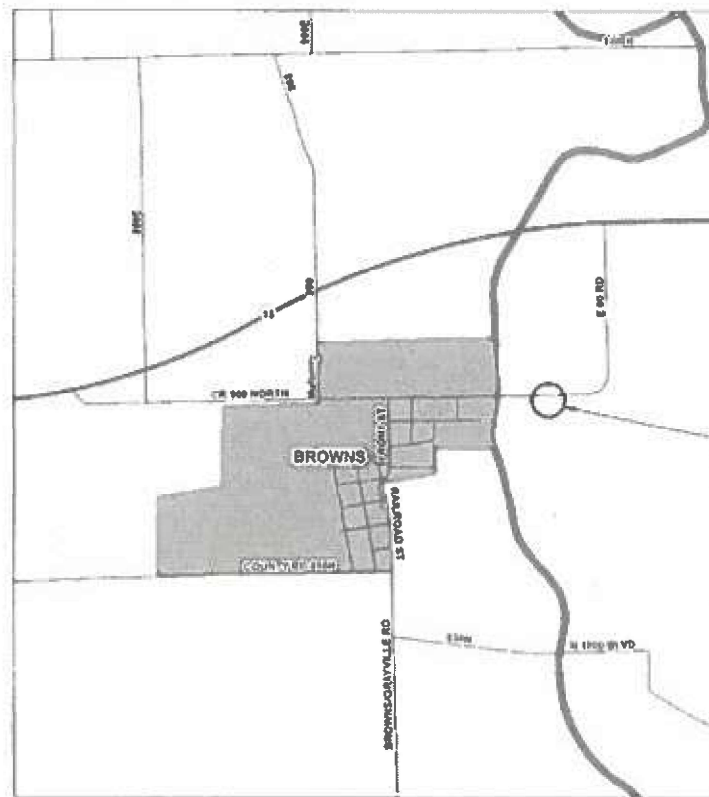
SBI ROUTE 1E (E 80 RD)
D7 PARKING LOT IMPROV 2024-2

PARKING LOT IMPROVEMENT
WABASH COUNTY
C-97-012-24



FULL SIZE PLANS HAVE BEEN PREPARED USING STANDARD ENGINEERING SCALES. REDUCED SIZED PLANS WILL NOT CONFORM TO STANDARD SCALES. IN MAKING MEASUREMENTS ON REDUCED PLANS, THE ABOVE SCALES MAY BE USED.

J.U.L.I.E.
JOINT UTILITY LOCATION INFORMATION FOR EXCAVATION
1-800-892-0123
OR 811



BROWNS YARD
80 ROAD 11076 EAST
BROWNS, IL 62818

PROJECT ENGINEER DAVID BUZZARD
PROJECT MANAGER ROBERT GREUEL

CONTRACT NO. 74C79

GROSS LENGTH = 528.00 FT. = 0.100 MILE
NET LENGTH = 528.00 FT. = 0.100 MILE

STATE OF ILLINOIS
DEPARTMENT OF TRANSPORTATION

SUBMITTED March 22 20 24
Jeffrey P. Myrland
REGIONAL ENGINEER

May 10, 2024 [Signature]
ENGINEER OF DESIGN AND ENVIRONMENT

May 10, 2024 [Signature]
DIRECTOR OF HIGHWAYS PROJECT IMPLEMENTATION

PRINTED BY THE AUTHORITY
OF THE STATE OF ILLINOIS

INDEX OF SHEETS

SHEET NO.	DESCRIPTION
1	COVER SHEET
2	INDEX OF SHEETS AND GENERAL NOTES
3	SUMMARY OF QUANTITIES
4	PLAN SHEET
5	CONCRETE REMOVAL
6	CONCRETE DETAILS

THE FOLLOWING STANDARDS ARE A PART OF THESE PLANS AND ARE INCLUDED FOLLOWING THE LAST NUMBERED SHEET OF THE PLANS.

000001-08	STANDARD SYMBOLS, ABBREVIATIONS AND PATTERNS
001006	DECIMAL OF AN INCH AND OF A FOOT
420001-10	PAVEMENT JOINTS
701901-09	TRAFFIC CONTROL DEVICES

GENERAL NOTES

THIS PROJECT IS LOCATED AT THE BROWNS MAINTENANCE YARD, 80 ROAD 110075 EAST, BROWNS, ILLINOIS.

THE WORK FOR THIS PARKING LOT REHABILITATION CONSISTS OF REMOVING THE CONCRETE APRON AND REPLACING IT WITH FIBER REINFORCED CONCRETE. ALL MATERIAL PRODUCED FROM THE REMOVAL OPERATIONS SUCH AS BROKEN CONCRETE, GRAVEL, AND SOIL SHALL BE CONSIDERED ILLINOIS STATE PROPERTY AND REMAIN AT THE BROWNS MAINTENANCE YARD.

THE MAINTENANCE YARD WILL REMAIN OPEN FOR BUSINESS AS USUAL AND THE CONTRACTOR SHALL COORDINATE WITH THE YARD TO KEEP INTERRUPTIONS WITH THE YARDS DAILY BUSINESS DOWN TO A MINIMUM.

REV. - MS

MODEL: INDEX [Sheet]
FILE NAME: c:\pw\work\pwr\rdg\greuel\rdg080937\074C79_SHT_index.dgn

USER NAME = Robert.Greuel	DESIGNED -	REVISED -
	DRAWN -	REVISED -
	CHECKED -	REVISED -
PLOT DATE = 3/21/2024	DATE -	REVISED -

**STATE OF ILLINOIS
DEPARTMENT OF TRANSPORTATION**

**INDEX OF SHEETS, HIGHWAY STANDARDS
AND GENERAL NOTES**

SCALE: SHEET OF 1 SHEETS STA. TO STA.

SIB. RTE.	SECTION	COUNTY	TOTAL SHEETS	SHEET NO.
1E	D7 PARKING LOT IMPROV 2024-2	WABASH	6	2
ILLINOIS			FED. AID PROJECT	

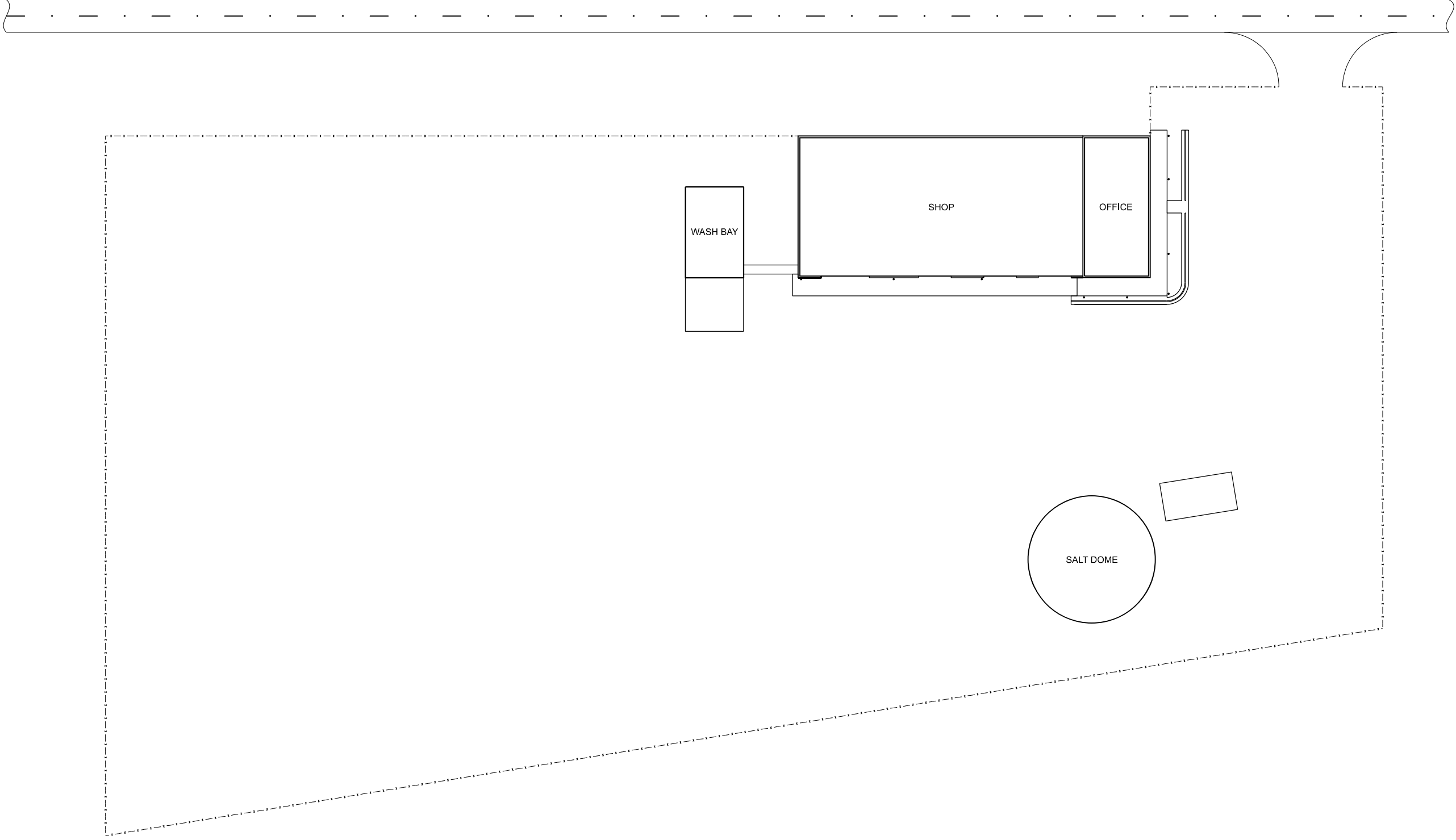
CONTRACT NO. 74C79

SUMMARY OF QUANTITIES				CONSTR. CODE
				100% STATE
CODE NO.	ITEM	UNIT	TOTAL QUANTITY	NONE
				0044
31101000	SUBBASE GRANULAR MATERIAL, TYPE B	TON	75	75
58700300	CONCRETE SEALER	SQ FT	7988	7988
67100100	MOBILIZATION	L SUM	1	1
X0321309	CONCRETE PAD	SQ YD	888	888
X1700114	CONCRETE PAD REMOVAL	SQ FT	2325	2325
Z0062002	SAW CUTTING, (FULL DEPTH)	FOOT	10	10

MODEL: SUMMARY OF QUANTITIES [Sheet]
FILE NAME: c:\p\work\p101\greuel\10080837\074C79_SOO.dgn

REV. - MS

USER NAME = Robert.Greuel	DESIGNED -	REVISED -	STATE OF ILLINOIS DEPARTMENT OF TRANSPORTATION	SUMMARY OF QUANTITIES	S1B	SECTION	COUNTY	TOTAL	SHEET	
	DRAWN -	REVISED -			1E	D7 PARKING LOT IMPROV 2024-2	WABASH	6	3	
	CHECKED -	REVISED -			CONTRACT NO. 74C79					
PLOT DATE = 3/21/2024	DATE -	REVISED -			SCALE:	SHEET	OF 1	SHEETS	STA	TO STA.



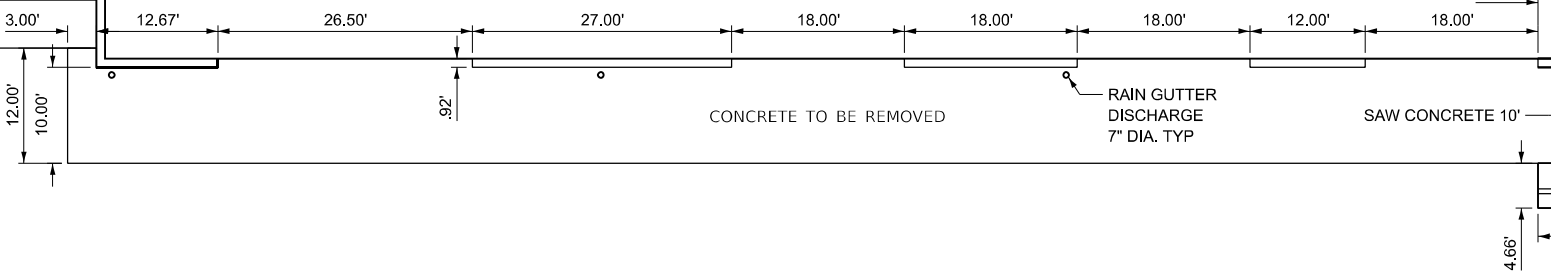
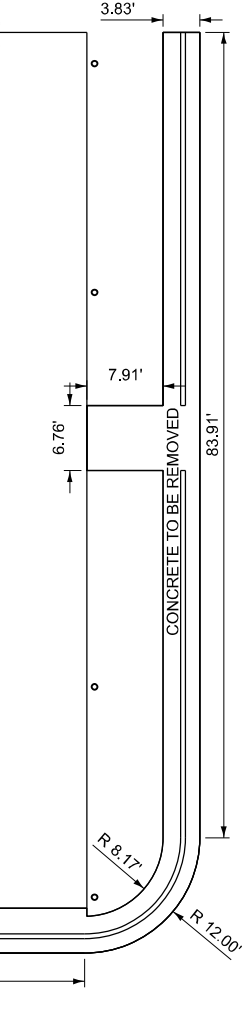
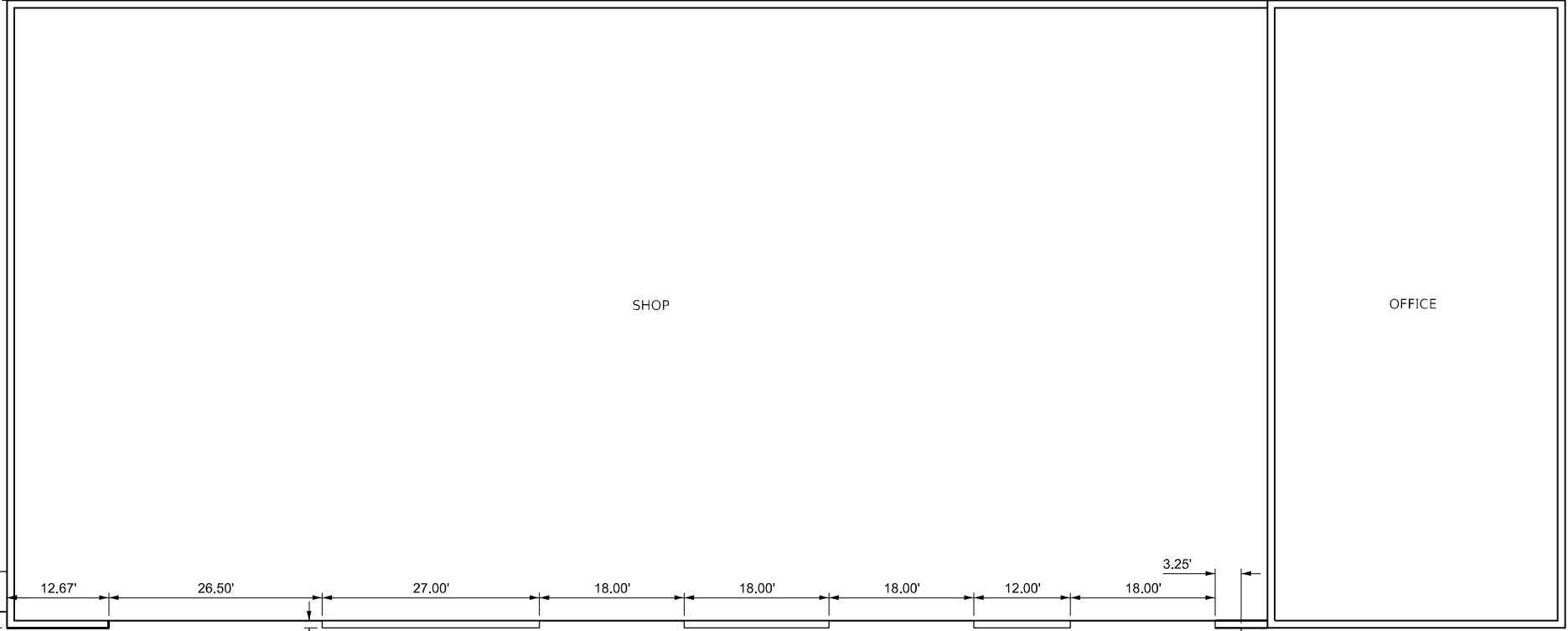
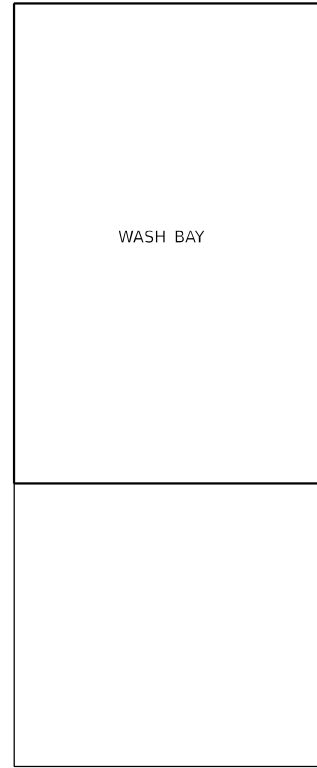
MODEL: PLAN SHEET (Sheet)
 FILE NAME: c:\p\work\wlad\greuel\fd0908937\0774C79_plan.dgn

USER NAME = Robert.Greuel	DESIGNED -	REVISED -
	DRAWN -	REVISED -
	CHECKED -	REVISED -
PLOT DATE = 3/22/2024	DATE -	REVISED -

**STATE OF ILLINOIS
 DEPARTMENT OF TRANSPORTATION**

PLAN SHEET	
SCALE:	SHEET OF 3 SHEETS STA. TO STA.

S.I.B. RTE.	SECTION	COUNTY	TOTAL SHEETS	SHEET NO.
1E	D7 PARKING LOT IMPROV 2024-2	WABASH	6	4
CONTRACT NO. 74C79				
ILLINOIS FED. AID PROJECT				



* NOTE, ALL CONCRETE REMOVED SHALL BE PIAD FOR AS CONCRETE PAD REMOVAL

MODEL: PLAN SHEET-1 (Sheet)
FILE NAME: c:\p\work\civil\greuel\10908937\074C79_plan.dgn

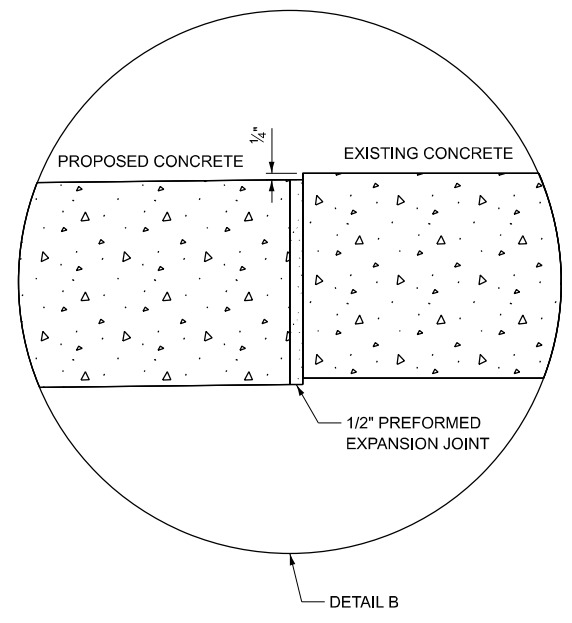
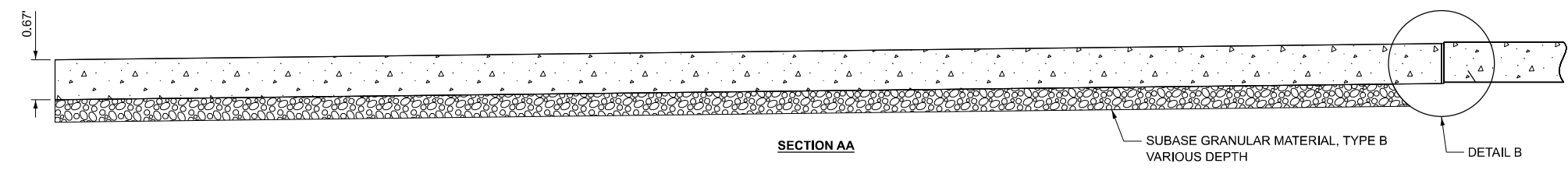
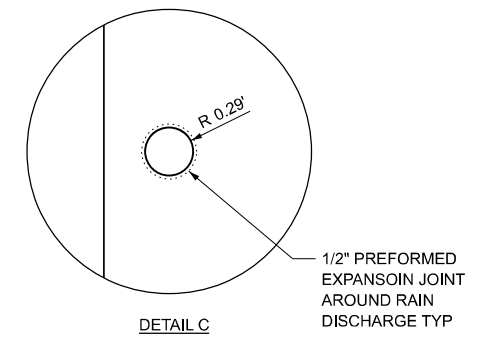
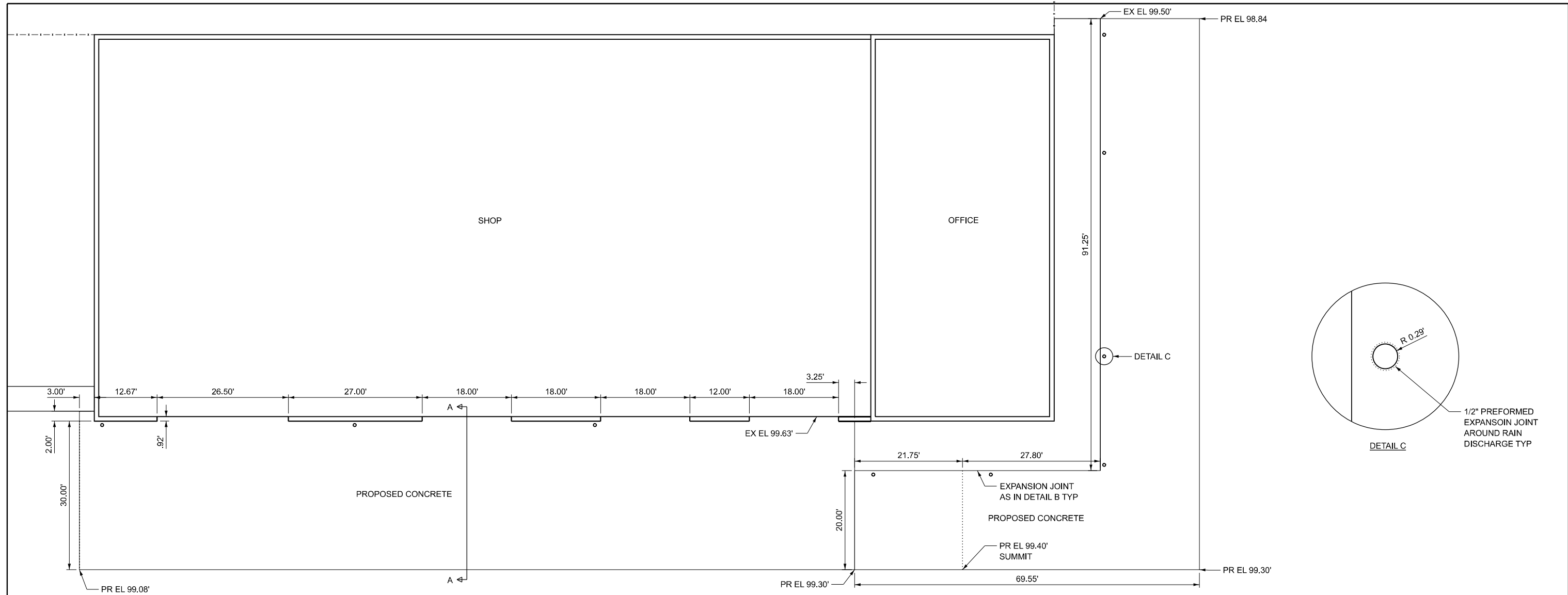
USER NAME = Robert.Greuel	DESIGNED -	REVISED -
	DRAWN -	REVISED -
	CHECKED -	REVISED -
PLOT DATE = 3/22/2024	DATE -	REVISED -

**STATE OF ILLINOIS
DEPARTMENT OF TRANSPORTATION**

CONCRETE REMOVAL

SCALE: SHEET OF 3 SHEETS STA. TO STA.

S.I.B. RTE.	SECTION	COUNTY	TOTAL SHEETS	SHEET NO.
E1	D7 PARKING LOT IMPROV 2024-2	WABASH	6	5
CONTRACT NO. 74C79			ILLINOIS FED. AID PROJECT	



BENCHMARK ON CONCRETE PAD EAST OF SALT DOME
(PAINTED DOT ON "0" OF 2019) GIVEN A 100.00 EL

MODEL: CONCRETE DETAIL (Sheet)
FILE NAME: c:\p\work\w1010\greuel\10090837\0774C79_d1an.dgn

USER NAME = Robert.Greuel	DESIGNED -	REVISED -
	DRAWN -	REVISED -
	CHECKED -	REVISED -
PLOT DATE = 3/21/2024	DATE -	REVISED -

**STATE OF ILLINOIS
DEPARTMENT OF TRANSPORTATION**

CONCRETE DETAILS

SCALE: SHEET OF 3 SHEETS STA. TO STA.

S.I.B. RTE.	SECTION	COUNTY	TOTAL SHEETS	SHEET NO.
1E	D7 PARKING LOT IMPROV 2024-2	WABASH	6	6
ILLINOIS FED. AID PROJECT			CONTRACT NO. 74C79	