

STATE OF ILLINOIS
DEPARTMENT OF TRANSPORTATION

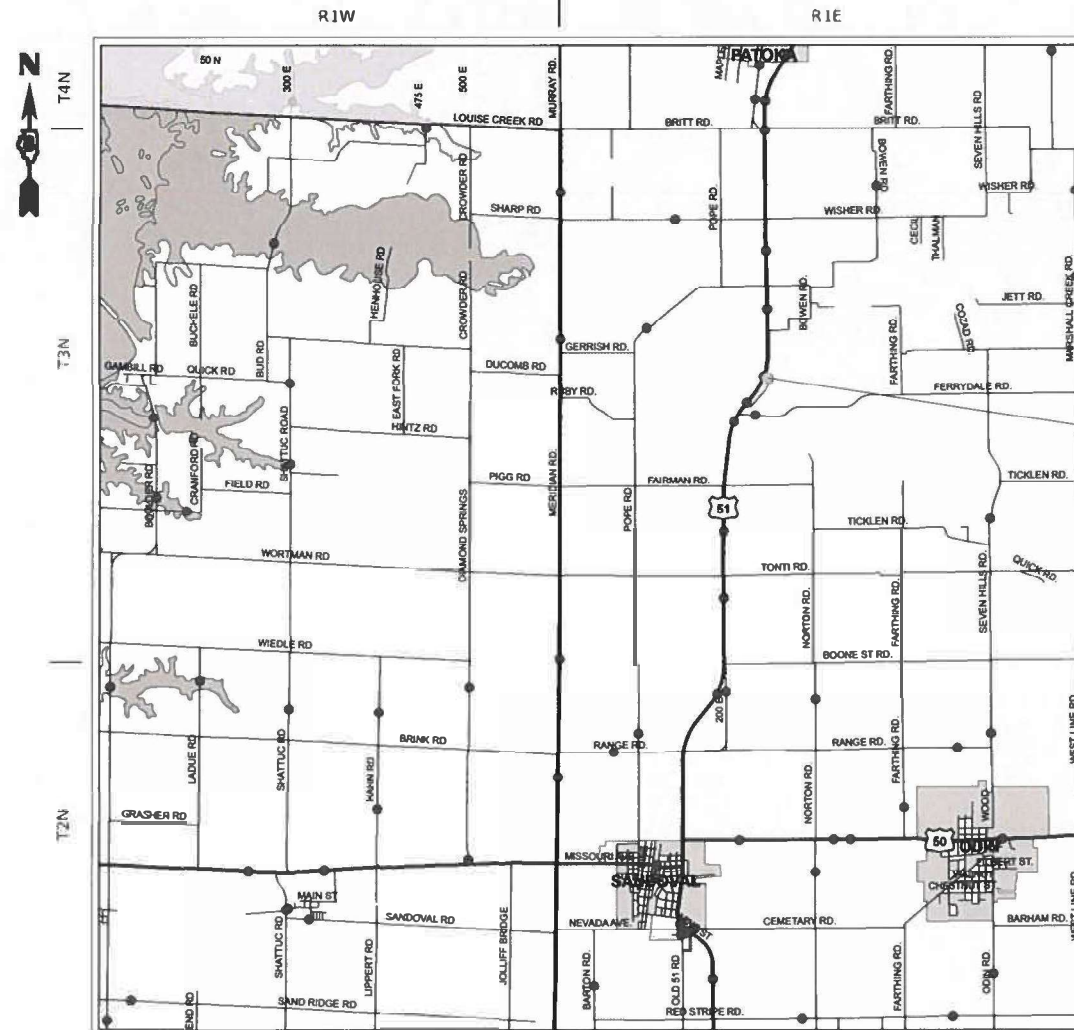
F.A.P. RTE.	SECTION	COUNTY	TOTAL SHEETS	SHEET NO.
322	27BR-1	MARION	9	1
		ILLINOIS	CONTRACT NO. 76H70	

FOR INDEX OF SHEETS, SEE SHEET NO. 2

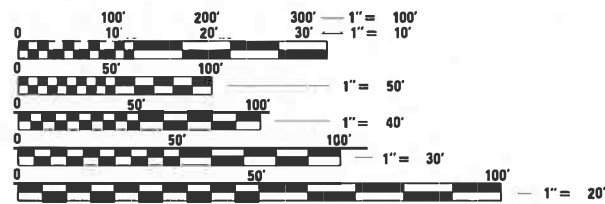
PROPOSED HIGHWAY PLANS

FAP ROUTE 322 (OLD US 51)
SECTION 27BR-1
BRIDGE DEMOLITION
MARION COUNTY

C-98-067-23



PROJECT LOCATION
OLD US 51 OVER EAST FORK
KASKASKIA OVERFLOW
5 MI N OF SANDOVAL
SN 061-0009
LATITUDE: 38.69535
LONGITUDE: -89.09550



FULL SIZE PLANS HAVE BEEN PREPARED USING STANDARD ENGINEERING SCALES. REDUCED SIZED PLANS WILL NOT CONFORM TO STANDARD SCALES. IN MAKING MEASUREMENTS ON REDUCED PLANS, THE ABOVE SCALES MAY BE USED.

J.U.L.I.E.
JOINT UTILITY LOCATION INFORMATION FOR EXCAVATORS
1-800-892-0123
OR 811

PROJECT ENGINEER CHERYL KEPLAR
PROJECT MANAGER KAREN CHALLANDES

CONTRACT NO. 76H70

GROSS LENGTH = 88.0 FT. = 0.0167 MILE
NET LENGTH = 88.0 FT. = 0.0167 MILE

STATE OF ILLINOIS
DEPARTMENT OF TRANSPORTATION

SUBMITTED March 21, 2024
Kirk Brown REGIONAL ENGINEER

May 10, 2024 [Signature]
ENGINEER OF DESIGN AND ENVIRONMENT

May 10, 2024 [Signature]
DIRECTOR OF HIGHWAYS PROJECT IMPLEMENTATION

PRINTED BY THE AUTHORITY
OF THE STATE OF ILLINOIS

INDEX OF SHEETS

- 1 COVER SHEET
- 2 INDEX OF SHEETS, HIGHWAY STANDARDS, GENERAL NOTES, AND COMMITMENTS
- 3 SUMMARY OF QUANTITIES
- 4 TYPICAL SECTIONS
- 5 PLAN SHEET
- 6 ROAD CLOSURE ASSEMBLY DETAIL AND SCHEDULE
- 7-9 EXISTING STRUCTURE PLANS

HIGHWAY STANDARDS

- 000001-08 STANDARD SYMBOLS, ABBREVIATIONS AND PATTERNS
- 001006 DECIMAL OF AN INCH AND OF A FOOT
- 701001-02 OFF-ROAD OPERATIONS, 2L, 2W MORE THAN 15' AWAY
- 701006-05 OFF-ROAD OPERATIONS, 2L, 2W 15' TO 24" FROM PAVEMENT EDGE
- 701901-09 TRAFFIC CONTROL DEVICES
- 720001-01 SIGN PANEL MOUNTING DETAILS
- 720006-04 SIGN PANEL ERECTION DETAILS

GENERAL NOTES

1. UTILITIES KNOWN TO HAVE FACILITIES WITHIN THE PROJECT AREA:
CLEARWAVE COMMUNICATIONS
FRONTIER COMMUNICATIONS
TRI-COUNTY ELECTRIC COOPERATION, INC.
2. NO SURVEY WAS PERFORMED FOR THIS PROJECT AND THE PLANS WERE CREATED USING MICROFILM AND FIELD MEASUREMENTS.
3. IF THE CONTRACTOR, FOR HIS CONSTRUCTION ACTIVITY, REMOVES TREES WITHIN THE RIGHT-OF-WAY LIMITS WHICH ARE NOT DESIGNATED ON THE PLANS FOR REMOVAL, I.E. IN ORDER TO GAIN ACCESS TO THE PROJECT SITE; IT WILL BE HIS RESPONSIBILITY TO REPLACE THE TREES AT A 1:1 RATIO. THE TREES WILL BE REPLACED WITH A 1 GALLON NATIVE ILLINOIS TREE SPECIES AND SHALL BE APPROVED BY THE ENGINEER. THE TREE REMOVAL AND TREE REPLACEMENT WILL BE AT THE CONTRACTOR'S EXPENSE, AND NO ADDITIONAL COMPENSATION WILL BE ALLOWED.
4. SELECTIVE MOWING STAKES SHALL BE PLACED AT THE DIRECTION OF THE ENGINEER.
5. DISTRICT 8 OPERATIONS SHALL PROVIDE THE SPECIAL SIGN "ROAD ENDS 300 FEET". CONTACT JEFF ABEL 618-346-3283 TO COORDINATE.
6. EXCAVATION BEHIND EXISTING ABUTMENT WALLS SHALL BE PERFORMED TO BALANCE FRONT AND BACK SOIL PRESSURE BEFORE REMOVING THE EXISTING SUPERSTRUCTURE.

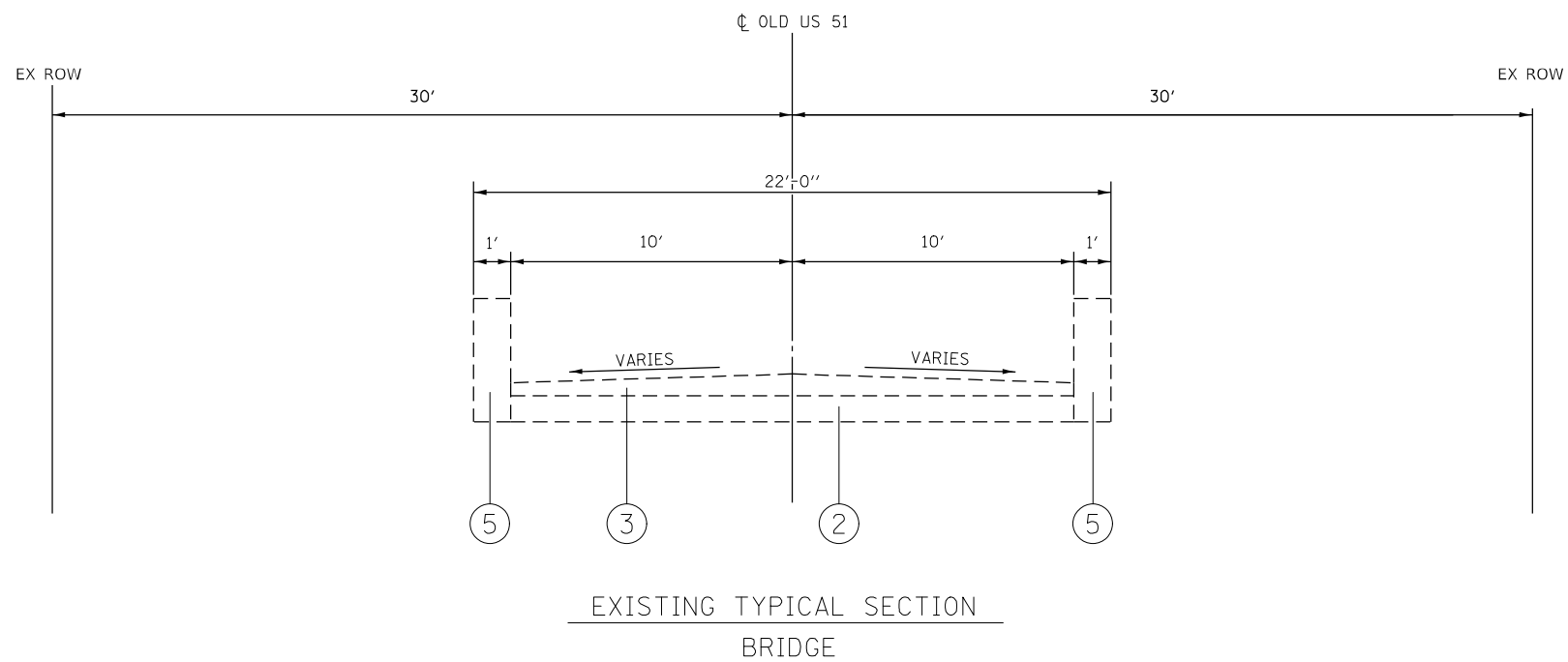
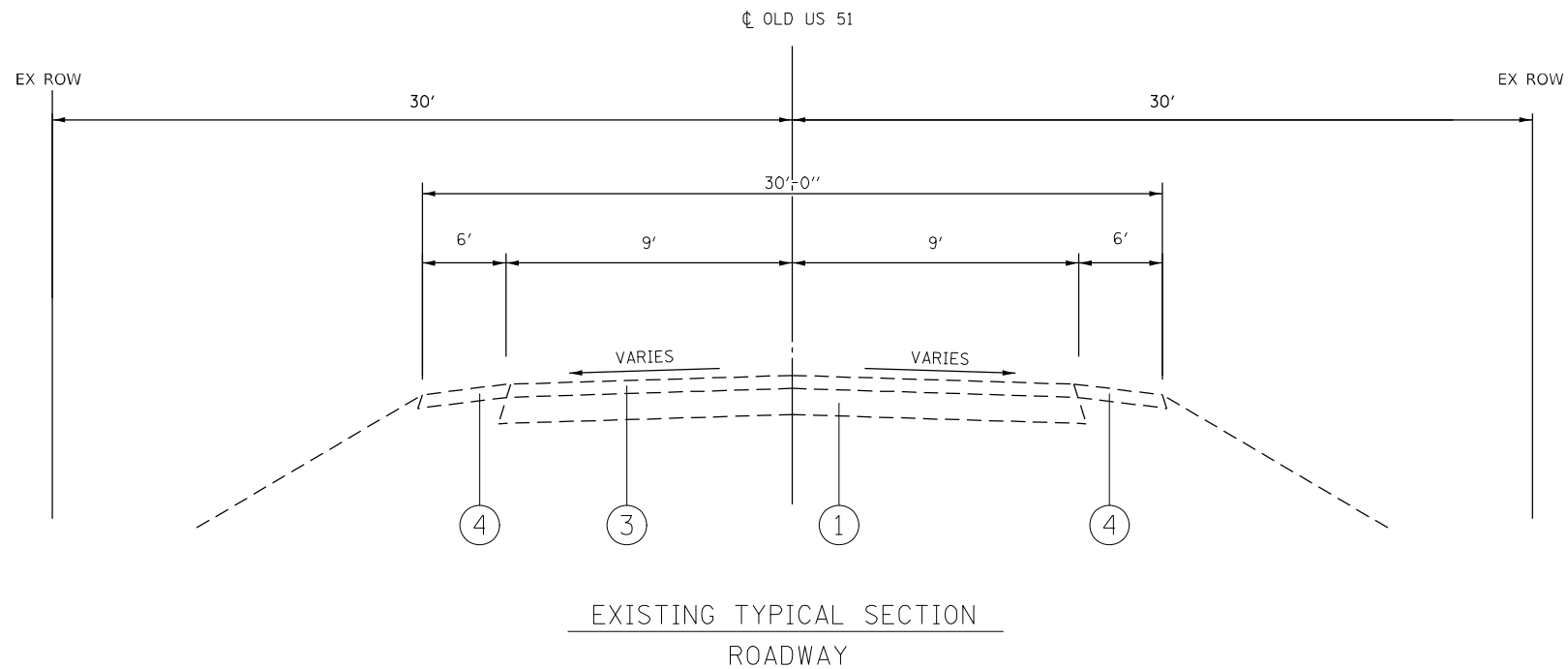
COMMITMENTS

TREES THREE (3) INCHES IN DIAMETER AT BREAST HEIGHT SHALL NOT BE CLEARED FROM APRIL 1ST THROUGH SEPTEMBER 30TH OF ANY GIVEN YEAR.

REV. - MS

MODEL: D:\default
 FILE: M:\MS: P:\ulidect-aw_bentley.com\P\INDOT\Documents\DOT_Offices\District_8\Projects\0876170\CADD\data\CAD\sheet\0876170-sh-gh-generate.dgn

USER NAME = karen.challandes	DESIGNED -	REVISED -	STATE OF ILLINOIS DEPARTMENT OF TRANSPORTATION	INDEX OF SHEETS, HIGHWAY STANDARDS GENERAL NOTES, AND COMMITMENTS	F.A.P. RTE.	SECTION	COUNTY	TOTAL SHEETS	SHEET NO.	
	DRAWN -	REVISED -			322	27BR-1	MARION	9	2	
PLOT SCALE = 100.0000' / in.	CHECKED -	REVISED -			CONTRACT NO. 76H70					
PLOT DATE = 3/21/2024	DATE -	REVISED -			SCALE:	SHEET	OF	SHEETS	STA.	TO
					ILLINOIS FED. AID PROJECT					



LEGEND

- ① EXISTING P.C.C. PAVEMENT
- ② EXISTING P.C.C. BRIDGE DECK
- ③ EXISTING HMA SURFACE COURSE 1"
- ④ EXISTING SOD SHOULDER
- ⑤ EXISTING RAILING

MODEL: Default
 FILE: \\maric.edu\public\aw-becker.com\PIV\DOT\Documents\DOT_Offices\Dir\dr. B\Project\087670\CADD\DATA\CAD\Sheet\087670\Sheet\typical.dgn

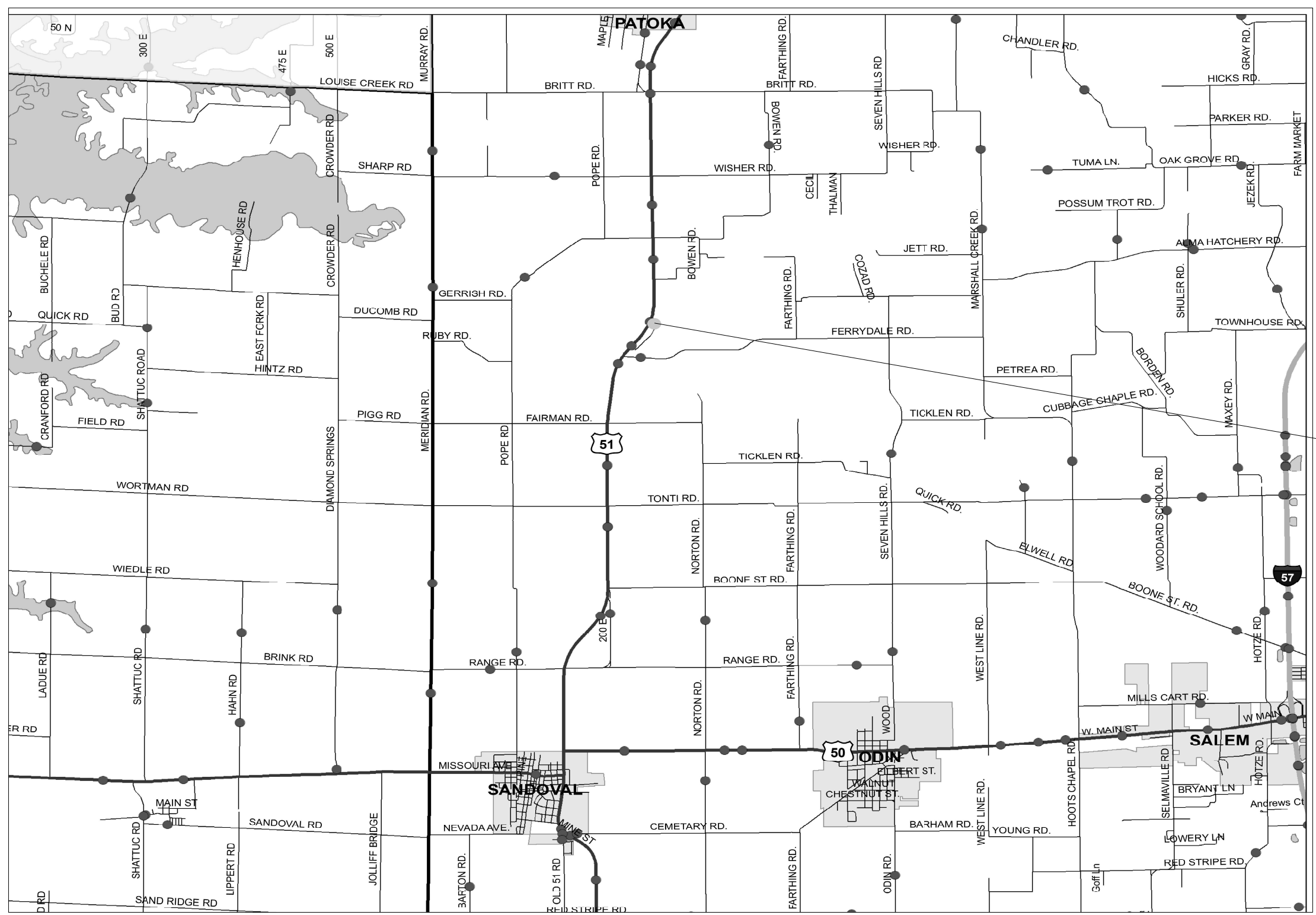
USER NAME = karen.challandes	DESIGNED -	REVISED -
	DRAWN -	REVISED -
PLOT SCALE = 100,0000' / in.	CHECKED -	REVISED -
PLOT DATE = 3/21/2024	DATE -	REVISED -

**STATE OF ILLINOIS
DEPARTMENT OF TRANSPORTATION**

EXISTING TYPICAL SECTIONS

SCALE: NTS SHEET 1 OF 1 SHEETS STA. TO STA.

F.A.P. RTE.	SECTION	COUNTY	TOTAL SHEETS	SHEET NO.
322	27BR-1	MARION	9	4
CONTRACT NO. 76H70				
ILLINOIS FED. AID PROJECT				



PROJECT LOCATION
 SN 061-0009
 OLD US 51 OVER EAST FORK
 KASKASKIA OVERFLOW

MODEL: Default
 FILE: 322.ctb
 PROJECT: 087670\CADD\DATA\CAD\Sheet\087670.ctb
 USER: karen.challandes

USER NAME = karen.challandes	DESIGNED -	REVISED -
	DRAWN -	REVISED -
PLOT SCALE = 100,0000' / in.	CHECKED -	REVISED -
PLOT DATE = 3/21/2024	DATE -	REVISED -

STATE OF ILLINOIS
DEPARTMENT OF TRANSPORTATION

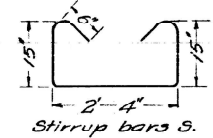
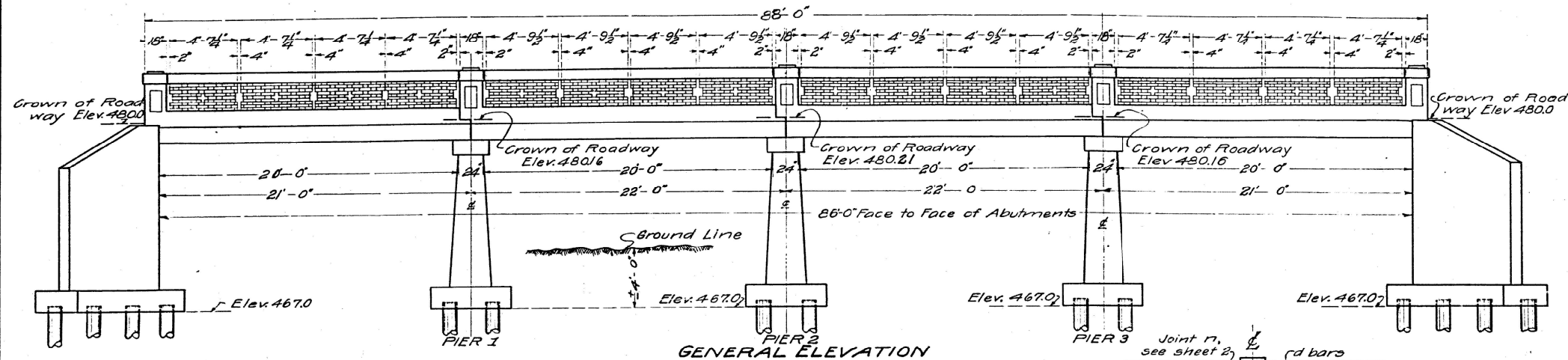
PLAN SHEET

SCALE: SHEET OF SHEETS STA. TO STA.

F.A.P. RTE.	SECTION	COUNTY	TOTAL SHEETS	SHEET NO.
322	27BR-1	MARION	9	5
CONTRACT NO. 76H70				
ILLINOIS FED. AID PROJECT				

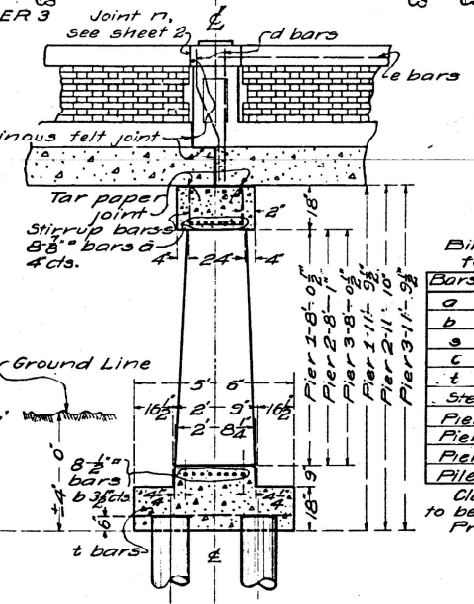
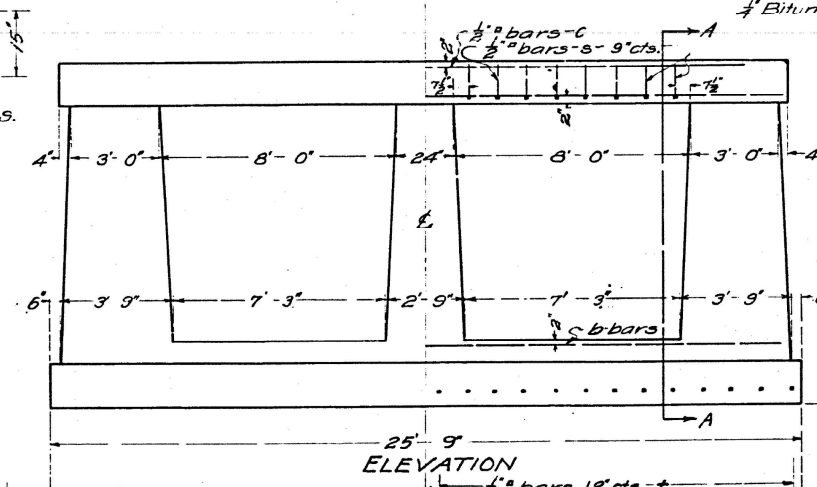
STATE OF ILLINOIS
DEPARTMENT OF PUBLIC WORKS & BUILDINGS
DIVISION OF HIGHWAYS

FEDERAL STATE	FED. AID	FISCAL YEAR	SHEET NO.	TOTAL SHEETS	Sheet 1.
ILL.	14	1970	6	9	3 Sheets.
ROUTE NO.	COUNTY	SEC.	TOTAL SHEETS	SHEET NO.	
2	Marion	27	26	24	



TOTAL BILL OF MATERIAL

Superstructure			
Steel	lbs.	18320	
Concrete Class A	Cu.Yds.	104.0	
Brick		24	
Substructure			
Piers			
Steel	lbs.	2840	
Concrete Class A	Cu.Yds.	57.7	
Files		36	
Abutments			
Steel	lbs.	2060	
Concrete Class A	Cu.Yds.	50.8	
Files		34	
Total			
Steel	lbs.	23220	
Concrete Class A	Cu.Yds.	212.5	
Brick		24	
Files		70	

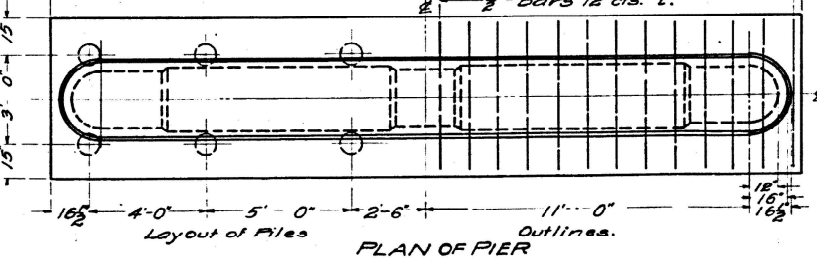


Bill of Material for Piers

Bars	No.	Size	Length
a	24	1/2"	24'-0"
b	24	3/8"	25'-0"
c	60	1/2"	5'-8"
t	12	1/2"	22'-8"
t	75	1/2"	5'-3"

Steel lbs. 2840
Pier 1 Cuds. 132
Pier 2 . 193
Pier 3 . 192
Files 36

Class A concrete to be used thruout. Proportions 1:2 1/2:4



COMPUTED	J.R. Kell
CHECKED	J.W. Mason
DRAWN	J.R. Kell
CHECKED	J.W. Mason
ASSEMBLED	J.W. Mason
CHECKED	J.W. Mason

EXAMINED Feb. 3, 1970
B.J. (Signature)
BRIDGE ENGINEER

DESIGNED
J.R. Kell
ENGINEER OF DESIGN

APPROVED
C. (Signature)
CHIEF HIGHWAY ENGINEER

Sta. 997+47
FEDERAL AID PROJECT NO. 14
Sec 27B
Marion County.

FOR INFORMATION ONLY

USER NAME = karen.challandes	DESIGNED -	REVISED -
	DRAWN -	REVISED -
PLOT SCALE = 100,000' / in.	CHECKED -	REVISED -
PLOT DATE = 3/21/2024	DATE -	REVISED -

STATE OF ILLINOIS
DEPARTMENT OF TRANSPORTATION

EXISTING STRUCTURE PLANS

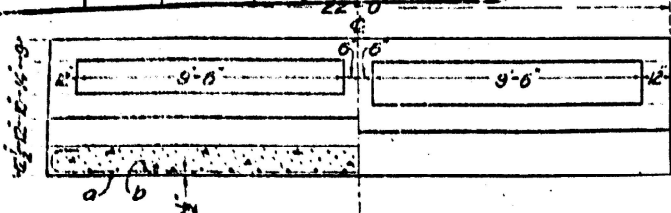
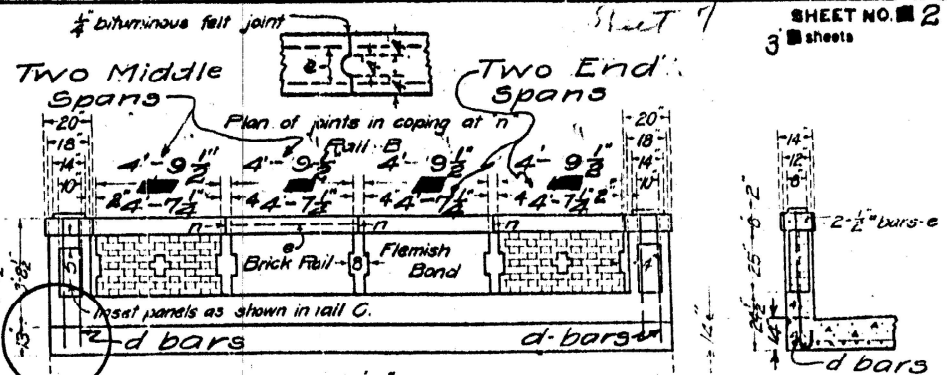
SCALE: SHEET 1 OF 3 SHEETS STA. TO STA.

F.A.P. RTE.	SECTION	COUNTY	TOTAL SHEETS	SHEET NO.
322	27BR-1	MARION	9	7
CONTRACT NO. 76H70				
ILLINOIS FED. AID PROJECT				

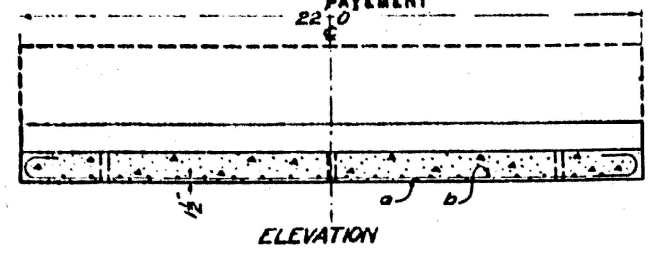
ROAD ISSUE NO.	COUNTY	SEC.	TOTAL SHEETS	SHEET NO.
14	Marion	27	26	25

ROAD STATE	FED. PROJ. NO.	FISCAL YEAR	SHEET NO.	TOTAL SHEETS
ILL	14	1920	17	9

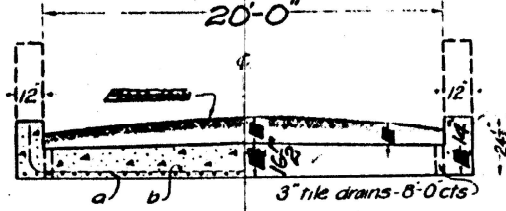
STATE OF ILLINOIS
STATE HIGHWAY DEPARTMENT
REINFORCED CONCRETE SLAB
SPAN, TWENTY FEET.



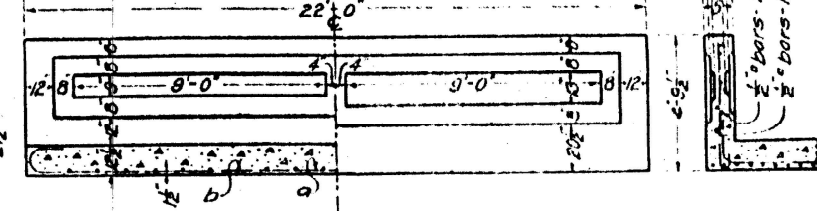
NOTE: TOP TWO INCHES OF FLOOR SLAB IS CONSIDERED AS FINISHING SURFACE AND IS TO BE FINISHED ACCORDING TO SPECIFICATIONS FOR PORTLAND CEMENT CONCRETE PAYMENT



ELEVATION



CROSS SECTION

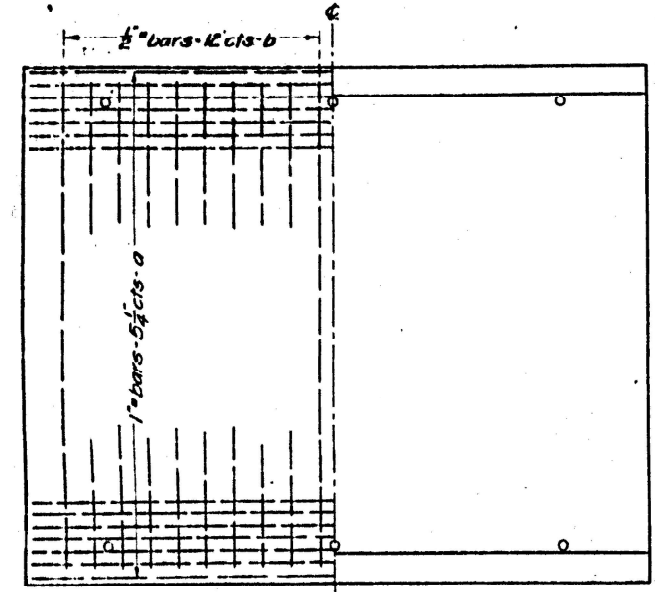


RAIL C

ONE SPAN
BILL OF MATERIAL

	16 FT. ROADWAY			18 FT. ROADWAY			20 FT. ROADWAY			24 FT. ROADWAY			30 FT. ROADWAY			
RAIL	Bars No.	Size	Length	Bars No.	Size	Length	Bars No.	Size	Length	Bars No.	Size	Length	Bars No.	Size	Length	
A	a	41	1"	24'-0"	a	45	1"	24'-0"	a	50	1"	24'-0"	a	59	1"	24'-0"
	b	20	1/2"	19'-6"	b	20	1/2"	21'-6"	b	20	1/2"	23'-6"	b	40	1/2"	18'-0"
	c	6	1/2"	21'-6"	c	6	1/2"	21'-6"	c	6	1/2"	21'-6"	c	6	1/2"	21'-6"
	d	40	1/2"	5'-0"	d	40	1/2"	5'-0"	d	40	1/2"	5'-0"	d	40	1/2"	5'-0"
	Steel-Lbs. 3960			4400			4760			5600			6850			
	Concrete-Cu Yds. 210			228			260			289			338			
B	a	41	1"	24'-0"	a	46	1"	24'-0"	a	50	1"	24'-0"	a	59	1"	24'-0"
	b	20	1/2"	19'-6"	b	20	1/2"	21'-6"	b	20	1/2"	23'-6"	b	40	1/2"	18'-0"
	e	16	1/2"	4'-6"	e	16	1/2"	4'-6"	e	16	1/2"	4'-6"	e	16	1/2"	4'-6"
	d	40	1/2"	5'-0"	d	40	1/2"	5'-0"	d	40	1/2"	5'-0"	d	40	1/2"	5'-0"
	Steel-Lbs. 3750			4190			4590			5400			6640			
	Concrete-Cu Yds. 19.6			21.5			26.0			27.0			32.5			
	Brick Rail-Cu Yds. 1.9			1.9			2.1			1.9			1.9			
C	a	41	1"	24'-0"	a	46	1"	24'-0"	a	50	1"	24'-0"	a	59	1"	24'-0"
	b	20	1/2"	19'-6"	b	20	1/2"	21'-6"	b	20	1/2"	23'-6"	b	40	1/2"	18'-0"
	c	6	1/2"	21'-6"	c	6	1/2"	21'-6"	c	6	1/2"	21'-6"	c	6	1/2"	21'-6"
	d	40	1/2"	5'-0"	d	40	1/2"	5'-0"	d	40	1/2"	5'-0"	d	40	1/2"	5'-0"
	Steel-Lbs. 3960			4400			4760			5600			6850			
	Concrete-Cu Yds. 210			229			247			284			339			

USE RAIL B, 20 FOOT ROADWAY



PLAN

Class A concrete to be used throughout
Proportions 1 - 2 1/4 - 4.

Sta 997+47
~~State Bond Issue Road~~
~~Sec. 27B~~
Marion County
Federal Aid Project No. 14

COMPUTED	Water of Joint
CHECKED	Conc. of Slab
DRAWN	Reinforcement
ASSEMBLED	Formwork
CHECKED	Foundation

EXAMINED
H. F. Burch
BRIDGE ENGINEER
APPROVED
Feb 3 1920
Clifford O. De
STATE HIGHWAY ENGINEER

PASSED
Frank J. Sheet
ENGINEER OF DESIGN

609

FOR INFORMATION ONLY

USER NAME = karen.challandes	DESIGNED -	REVISED -
PLOT SCALE = 100,000' / in.	DRAWN -	REVISED -
PLOT DATE = 3/21/2024	CHECKED -	REVISED -
	DATE -	REVISED -

STATE OF ILLINOIS
DEPARTMENT OF TRANSPORTATION

EXISTING STRUCTURE PLANS

SCALE: SHEET 2 OF 3 SHEETS STA. TO STA.

F.A.P. RTE.	SECTION	COUNTY	TOTAL SHEETS	SHEET NO.
322	27BR-1	MARION	9	8
CONTRACT NO. 76H70				
ILLINOIS FED. AID PROJECT				

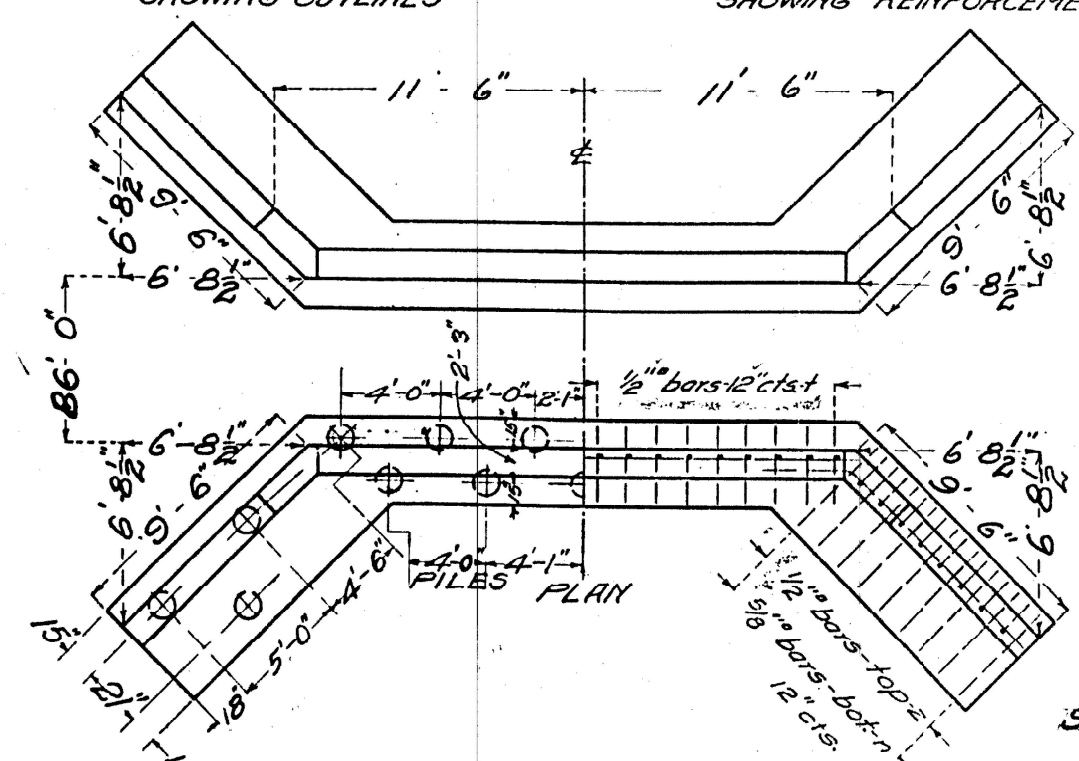
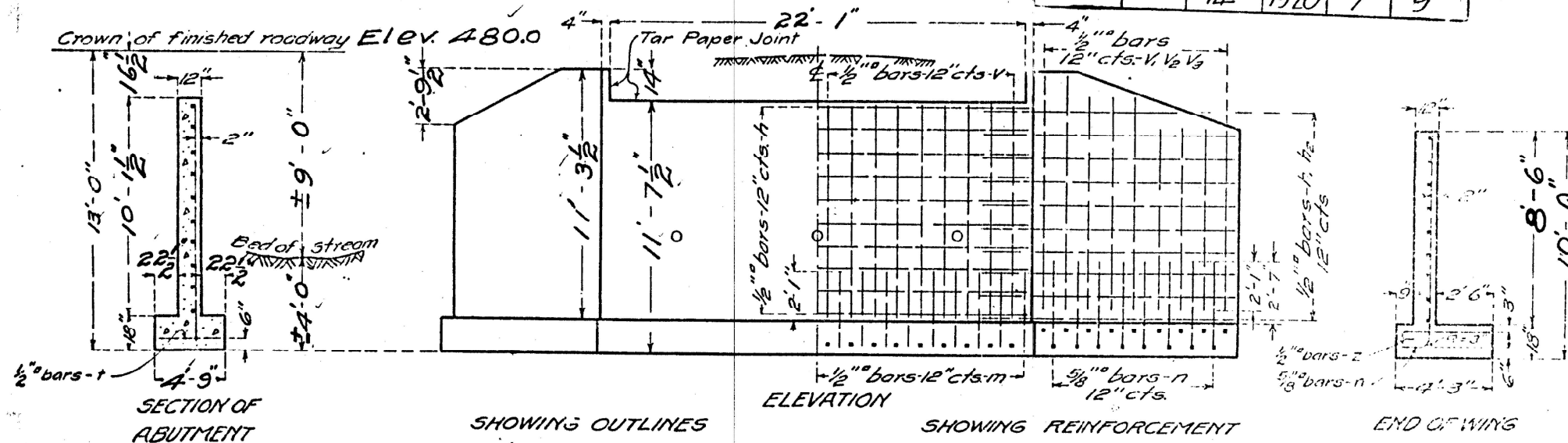
STATE OF ILLINOIS
STATE HIGHWAY DEPARTMENT
R. C. ABUTMENTS FOR SLAB BRIDGE
HEIGHT OVER ALL 13 FT.

BOND ISSUE ROUTE NO.	COUNTY	SEC.	TOTAL SHEETS	SHEET NO.
2	Marion	27	26	25

Sheet No 3
3 sheets

FED. ROAD DIST. NO.	STATE	FED. AID PROJ. NO.	FISCAL YEAR	SHEET NO.	TOTAL SHEETS
1	ILL.	14	1920	7	9

B.M. See Road Plans.



BILL OF MATERIAL

Bars	No.	Size	Length
v	44	1/2"	10'-0"
v	8	1/2"	10'-6"
v	12	1/2"	9'-0"
v	16	1/2"	8'-0"
h	20	1/2"	22'-6"
h	36	1/2"	11'-6"
h ₂	4	1/2"	5'-6"
m	44	1/2"	3'-0"
n	36	5/8"	5'-0"
t	44	1/2"	4'-6"
z	36	1/2"	4'-6"
Steel-Lbs.			2060
Concrete-Cu. Yds.			508

Class A concrete to be used throughout.
Proportions 1:2 1/2:4

Sta 997+47
State Bond Issue Road
Route 2 - Sec. 27B
Marion Co.
Federal Aid Project No. 14

COMPUTED - *Walter J. Ford*
CHECKED - *F. W. Park*
DRAWN - *W. J. ...*
CHECKED - *W. J. ...*
ASSEMBLED - *W. J. ...*
SPECIAL CHECKED - *W. J. ...*
EXAMINED - *W. J. ...*

PASSED
Frank J. ...
ENGINEER OF DESIGN

670

FOR INFORMATION ONLY

USER NAME = karen.challances	DESIGNED -	REVISED -	STATE OF ILLINOIS DEPARTMENT OF TRANSPORTATION		EXISTING STRUCTURE PLANS		F.A.P. RTE. 322	SECTION 27BR-1	COUNTY MARION	TOTAL SHEETS 9	SHEET NO. 9
PLOT SCALE = 100,000' / 1"	DRAWN -	REVISED -	SCALE:		SHEET 3 OF 3 SHEETS	STA. TO STA.	CONTRACT NO. 76H70				
PLOT DATE = 3/21/2024	CHECKED -	REVISED -	ILLINOIS		FED. AID PROJECT						