

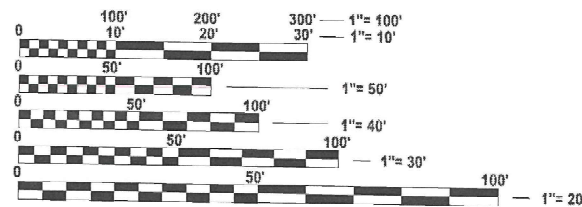
STATE OF ILLINOIS  
DEPARTMENT OF TRANSPORTATION

F.A.P. RTE.	SECTION	COUNTY	TOTAL SHEETS	SHEET NO.
N/A	DIST 8 SEAL COAT 2024-1	VARIOUS	10	1
		ILLINOIS	CONTRACT NO. 76U10	

FOR INDEX OF SHEETS, SEE SHEET NO. 2

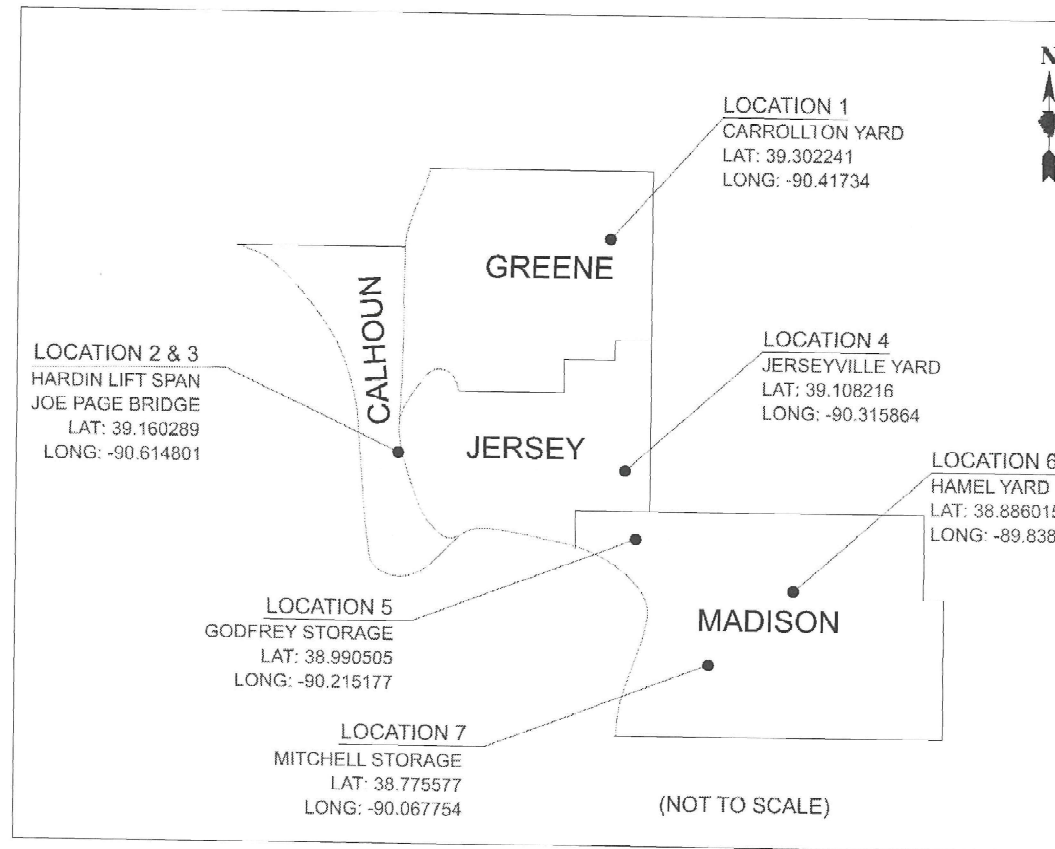
# PROPOSED HIGHWAY PLANS

VARIOUS ROUTES  
SECTION: DIST 8 SEAL COAT 2024-1  
BITUMINOUS SURFACE TREATMENT - A2  
VARIOUS COUNTIES  
C-98-166-24



FULL SIZE PLANS HAVE BEEN PREPARED USING STANDARD ENGINEERING SCALES. REDUCED SIZED PLANS WILL NOT CONFORM TO STANDARD SCALES. IN MAKING MEASUREMENTS ON REDUCED PLANS, THE ABOVE SCALES MAY BE USED.

J.U.L.I.E.  
JOINT UTILITY LOCATION INFORMATION FOR EXCAVATION  
1-800-892-0123  
OR 811



PROJECT ENGINEER: BILLIE OWEN  
PROJECT MANAGER: MEIWU AN

CONTRACT NO. 76U10

STATE OF ILLINOIS  
DEPARTMENT OF TRANSPORTATION

SUBMITTED April 3, 2024

*[Signature]*  
REGIONAL ENGINEER

May 10, 2024 *[Signature]*  
ENGINEER OF DESIGN AND ENVIRONMENT

May 10, 2024 *[Signature]*  
DIRECTOR OF HIGHWAYS PROJECT IMPLEMENTATION

PRINTED BY THE AUTHORITY  
OF THE STATE OF ILLINOIS

## INDEX OF SHEETS

1. COVER SHEET
2. INDEX, HIGHWAY STANDARDS, GENERAL NOTES & COMMITMENTS
3. SUMMARY OF QUANTITIES
- 4-10. LOCATION MAP, LOCATION DETAILS

## HIGHWAY STANDARDS

- 001006 DECIMAL OF AN INCH & OF A FOOT  
 000001-08 STANDARD SYMBOLS, ABBREVIATIONS & PATTERNS  
 701001-02 OFF-RD OPERATIONS, 2L, 2W MORE THAN 15' (4.5M) AWAY  
 701006-05 OFF-RD OPERATIONS, 2L, 2W, 15' (4.5M) TO 24" (600mm) FROM PAVEMENT  
 701301-04 LANE CLOSURE, 2L, 2W, SHORT TIME OPERATIONS  
 701901-09 TRAFFIC CONTROL DEVICES

## GENERAL NOTES

1. THE DEPARTMENT STRONGLY ENCOURAGES THE PRIME CONTRACTOR AND THEIR APPROVED SUB-CONTRACTORS TO HIRE MINORITY, WOMEN AND DISADVANTAGED INDIVIDUALS FROM ITS FEDERALLY FUNDED HIGHWAY CONSTRUCTION CAREERS TRAINING PROGRAM (HCCTP) TO HELP MEET WORKFORCE AND TRAINEE GOALS. THIS PROGRAM IS TRAINING MINORITIES, WOMEN AND DISADVANTAGED INDIVIDUALS IN HIGHWAY CONSTRUCTION RELATED SKILLS, E.G., MATH FOR THE TRADES, JOB READINESS, TECHNICAL SKILLS COURSEWORK (CARPENTRY, CONCRETE FLATWORK, BLUEPRINT READING, SITE PLANS, SITE WORK, TOOLS USE, ETC.) AND OSHA 10 HOUR CERTIFICATION, TO PREPARE THEM FOR A CAREER IN THE HIGHWAY CONSTRUCTION TRADES. GRADUATES ARE WELL-TRAINED AND READY TO BECOME PRODUCTIVE ENTRY-LEVEL CONSTRUCTION WORKERS. CONTACT THE DISTRICT 8 EEO OFFICE AT 618-346-3360 AND/OR THE HCCTP COORDINATOR AT 618-874-6528 TO LEARN MORE ABOUT THE PROGRAM AND FOR ASSISTANCE IN MEETING WORKFORCE AND TRAINEE GOALS.
2. AS STATED IN THE BDE MANUAL, FOG COAT IS NOT REQUIRED ON AREAS WITH ADT LESS THAN 1000 AND IT'S NOT INCLUDED IN THIS CONTRACT.
3. THE CONTRACTOR SHALL USE CA-16 FOR THE SEAL AND COVER AGGREGATE.
4. NO SURVEY WAS PERFORMED FOR THIS PROJECT AND THE PLANS WERE CREATED USING MICROFILM AND FIELD MEASUREMENTS.
5. THE RESIDENT ENGINEER SHALL VERIFY THE EXISTENCE OF HIGHWAY LIGHTING, INTELLIGENT TRANSPORTATION SYSTEMS (I.T.S.) UTILITIES, AND/OR ELECTRICAL CABLES ASSOCIATED WITH TRAFFIC SIGNALS WITHIN THE PROJECT LIMITS. IF ANY OF THESE EXIST WITHIN THE PROJECT LIMITS, AND IF THESE ITEMS REQUIRE LOCATING, THE CONTRACTOR SHALL BE DIRECTED TO DO SO ACCORDING TO SECTION 803 OF THE STANDARD SPECIFICATIONS. THIS WORK SHALL BE PAID FOR ACCORDING TO ARTICLE 109.04 OF THE STANDARD SPECIFICATIONS.
6. ALL TURF AREAS DISTRIBUTED BY THE CONTRACTOR SHALL BE SEEDED WITH THE APPROPRIATE EROSION CONTROL, AS DIRECTED BY THE ENGINEER, AT THE CONTRACTOR'S EXPENSE.

## 7. UTILITIES KNOWN TO HAVE FACILITIES WITHIN THE PROJECT AREA:

Location	Company	Address	Type
<b>1 Carrollton Yard</b>			
	Ameren Illinois	1500 W Lafayette Rd, Jacksonville, IL 62650	Gas & Electric
	City of Carrollton	621 South Main St, Carrollton, IL 62016	Sewer & Water
	Frontier Communications	330 West Beecher Ave, Jacksonville, IL 62650	Communications
<b>2 Hardin Bridge</b>			
	Ameren Illinois	1500 W Lafayette Rd, Jacksonville, IL 62650	Gas & Electric
	Frontier Communications	330 West Beecher Ave, Jacksonville, IL 62650	Communications
	Illinois American Water	4436 Industrial Drive, Alton, IL 62002	Sewer & Water
<b>3 Jerseyville Yard</b>			
	Ameren Illinois	1500 W Lafayette Rd, Jacksonville, IL 62650	Gas & Electric
	New Wave Communications	1176 E 1500 North Rd, Taylorville, IL 62568	Cable TV
	Frontier Communications	330 West Beecher Ave, Jacksonville, IL 62650	Communications
	Grafton Telephone Co	119 E Main St, Grafton, IL 62037	Communications
	Illinois American Water	4436 Industrial Drive, Alton, IL 62002	Sewer & Water
	City of Jerseyville	115 E Prairie St, Jerseyville, IL 62052	Sewer
<b>4 Godfrey Storage</b>			
	Ameren Illinois	700 Oakwood Ave, Alton, IL 62002	Electric
	AT&T Illinois	213 E 3rd St, Alton, IL 62002	Communications
	Charter Spectrum	506 Niagara St, East Alton, IL 62024	Cable TV
	Village of Godfrey	6810 Godfrey Rd, Godfrey, IL 62035	Sewer
	Jersey County Rural Water	1009 State Hwy 16, Jerseyville, IL 62052	Water
<b>5 Mitchell Storage</b>			
	Ameren Illinois	2600 North Center St, PO Box 378, Maryville, IL 62062	Gas & Electric
	AT&T Illinois	160 West Division St, Maryville, IL 62062	Communications
	Charter Spectrum	210 West Division St, Maryville, IL 62062	Cable TV
	City of Edwardsville	118 Hillsboro Ave, Edwardsville, IL 62025	Sewer & Water
	Everstream GLC Holding	1228 Euclid Ave, Cleveland, OH 44115	Communications
	MCI/Verizon	900 Walnut St, St Louis, MO 63102	Communications
	Mitchell Public Water Dist	745 E Chain of Rocks Rd, Granite City, IL 62040	Water
	Buckeye Partners	220 E Hawthorne St, Hartford, IL 62048	Pipeline
<b>6 Hamel Yard</b>			
	Ameren Illinois	2600 North Center St, PO Box 378, Maryville, IL 62062-0378	Gas & Electric
	Village of Hamel	111 S Old Route 66, Hamel, IL 62046	Sewer & Water
	Level 3/Lumen	1015 Locust St, St Louis, MO 63101	Communications
	Madison Telephone Co	21668 Double Arch Rd, Staunton, IL 62088	Communications

## COMMITMENTS

NONE

MODEL: General Notes (Sheet)  
FILE NAME: c:\p\work\pwwid\illinois.gov\joshua.huffstutler@illinois.gov\d097795087610-sh-gmncate.dgn

USER NAME = Joshua.Huffstutler	DESIGNED -	REVISED -
	DRAWN -	REVISED -
	CHECKED -	REVISED -
PLOT DATE = 4/3/2024	DATE -	REVISED -

STATE OF ILLINOIS  
DEPARTMENT OF TRANSPORTATION

INDEX OF SHEETS, HIGHWAY STANDARDS,  
GENERAL NOTES AND COMMITMENTS

SCALE: SHEET OF 1 SHEETS STA. TO STA.

F.A.P. RTE.	SECTION	COUNTY	TOTAL SHEETS	SHEET NO.
N/A	DIST 8 SEAL COAT 2024-1	VARIOUS	10	2
CONTRACT NO. 76U10				
ILLINOIS FED. AID PROJECT				

MODEL: SOQ SHEET [Sheet]  
 FILE NAME: c:\pw\work\pav\illinois.gpr\joshua.huffstutler@illinois.gov\d87795087610-sth-SOQ.dgn

CODE NO.	ITEM	UNIT	TOTAL QUANTITY	CONSTR. CODE	
				100% STATE	
				ROADWAY	
				0005	NONE
67100100	MOBILIZATION	L SUM	1	1	
X1500005	BITUMINOUS SURFACE TREATMENT, A2	SQ YD	43350	43350	

USER NAME = Joshua.Huffstutler	DESIGNED -	REVISED -
	DRAWN -	REVISED -
	CHECKED -	REVISED -
PLOT DATE = 4/2/2024	DATE -	REVISED -

**STATE OF ILLINOIS  
 DEPARTMENT OF TRANSPORTATION**

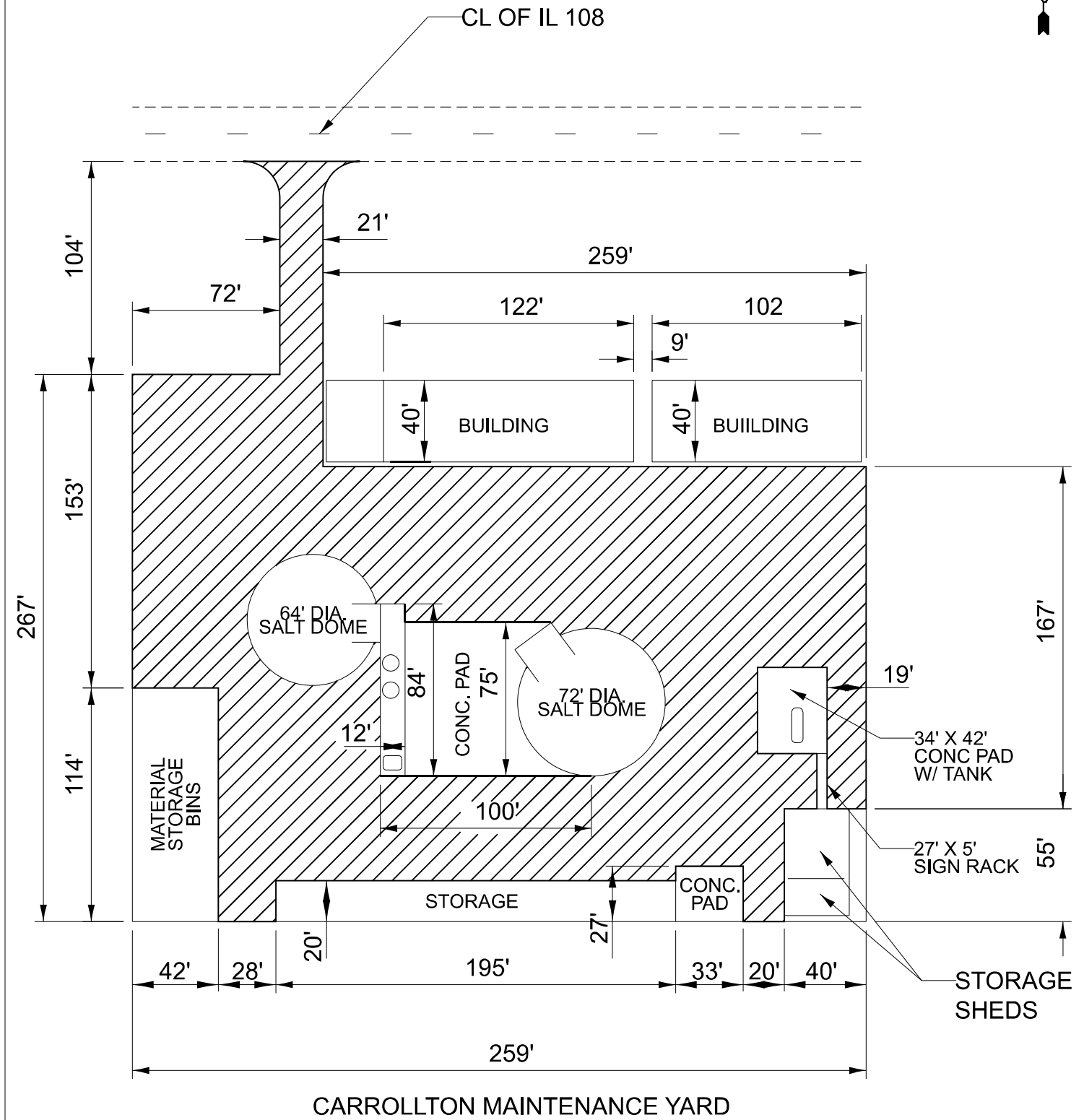
SUMMARY OF QUANTITIES			
SCALE:	SHEET	OF 1 SHEETS	STA. TO STA.

F.A.P. RTE.	SECTION	COUNTY	TOTAL SHEETS	SHEET NO.
N/A	DIST 8 SEAL COAT 2024-1	VARIOUS	10	3
ILLINOIS   FED. AID PROJECT			CONTRACT NO. 76U10	

CARROLLTON MAINTENANCE YARD  
 1091 N MAIN ST.  
 CARROLLTON, IL 62016



LOCATION 1 MAP



BITUMINOUS SURFACE TREATMENT, A2 AREA = 6623 SQ YDS

BITUMINOUS SURFACE TREATMENT, A2

MODEL: Location 1 (Sheet)  
 FILE NAME: c:\p\work\road\maiten\carrollton\loc1\loc1-plan.dgn

USER NAME = MeiWu.An	DESIGNED -	REVISED -
	DRAWN -	REVISED -
	CHECKED -	REVISED -
PLOT DATE = 4/3/2024	DATE -	REVISED -

STATE OF ILLINOIS  
 DEPARTMENT OF TRANSPORTATION

LOCATION 1  
 CARROLLTON MAINTENANCE YARD

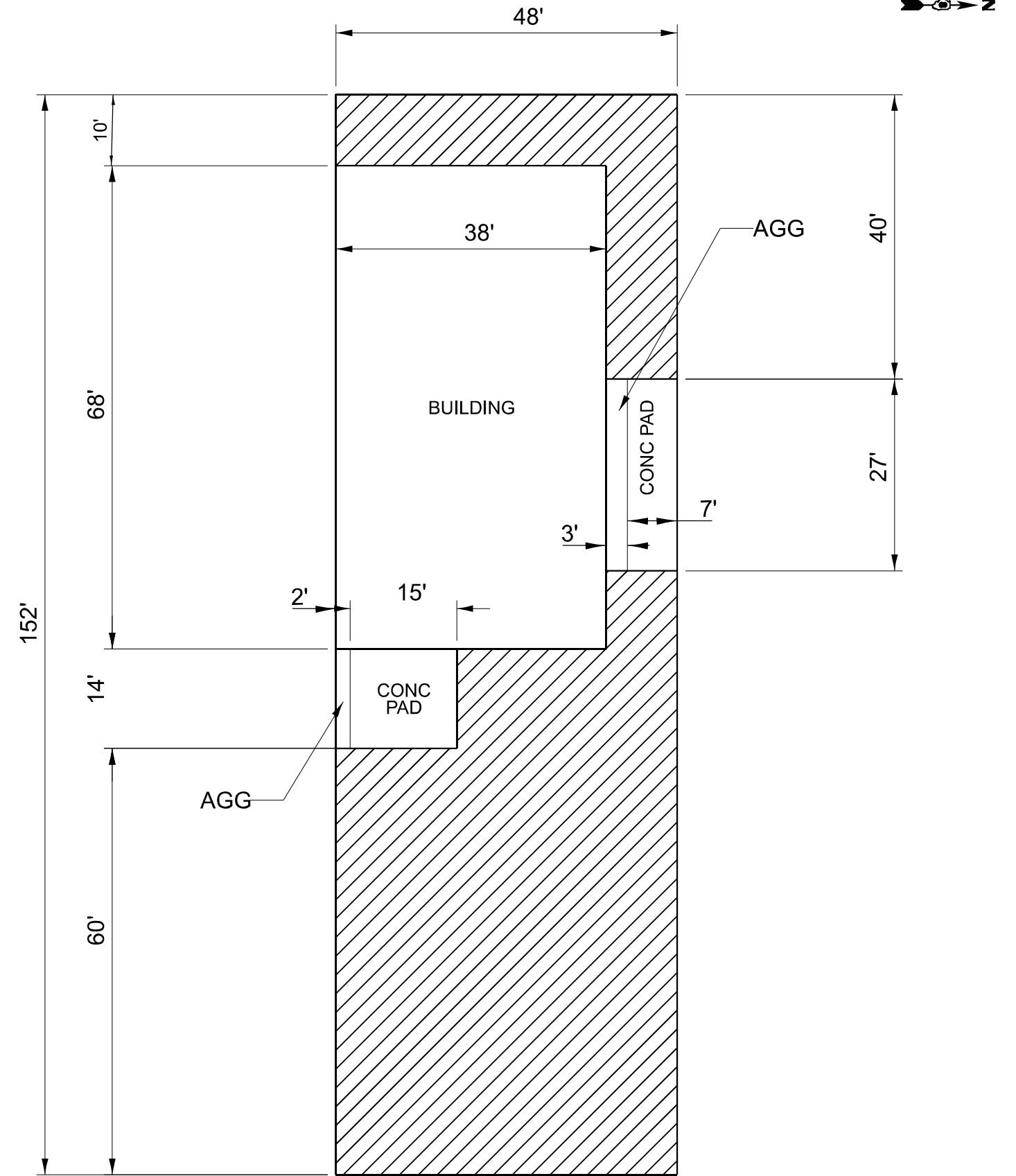
SCALE: SHEET OF 7 SHEETS STA. TO STA.

F.A.P. RTE.	SECTION	COUNTY	TOTAL SHEETS	SHEET NO.
N/A	DIST 8 SEAL COAT 2024-1	VARIOUS	10	4
CONTRACT NO. 76U10				
ILLINOIS FED. AID PROJECT				



**LOCATION 2 MAP**

**JOE PAGE BRIDGE STORAGE SHED  
0.47 MILES SOUTH OF IL 100  
(JOE PAGE BRIDGE) INTERSECTION**



BITUMINOUS SURFACE TREATMENT, A2 AREA = 467 SQ YDS

BITUMINOUS SURFACE TREATMENT, A2

MODEL: Location 2 (Sheet)  
FILE NAME: c:\p\work\road\makuhan@illinois.gov\0977795\0876U10-shed-plan.dgn

USER NAME = Meiwu,An	DESIGNED -	REVISED -
	DRAWN -	REVISED -
	CHECKED -	REVISED -
PLOT DATE = 4/3/2024	DATE -	REVISED -

**STATE OF ILLINOIS  
DEPARTMENT OF TRANSPORTATION**

**LOCATION 2  
JOE PAGE BRIDGE STORAGE SHED**

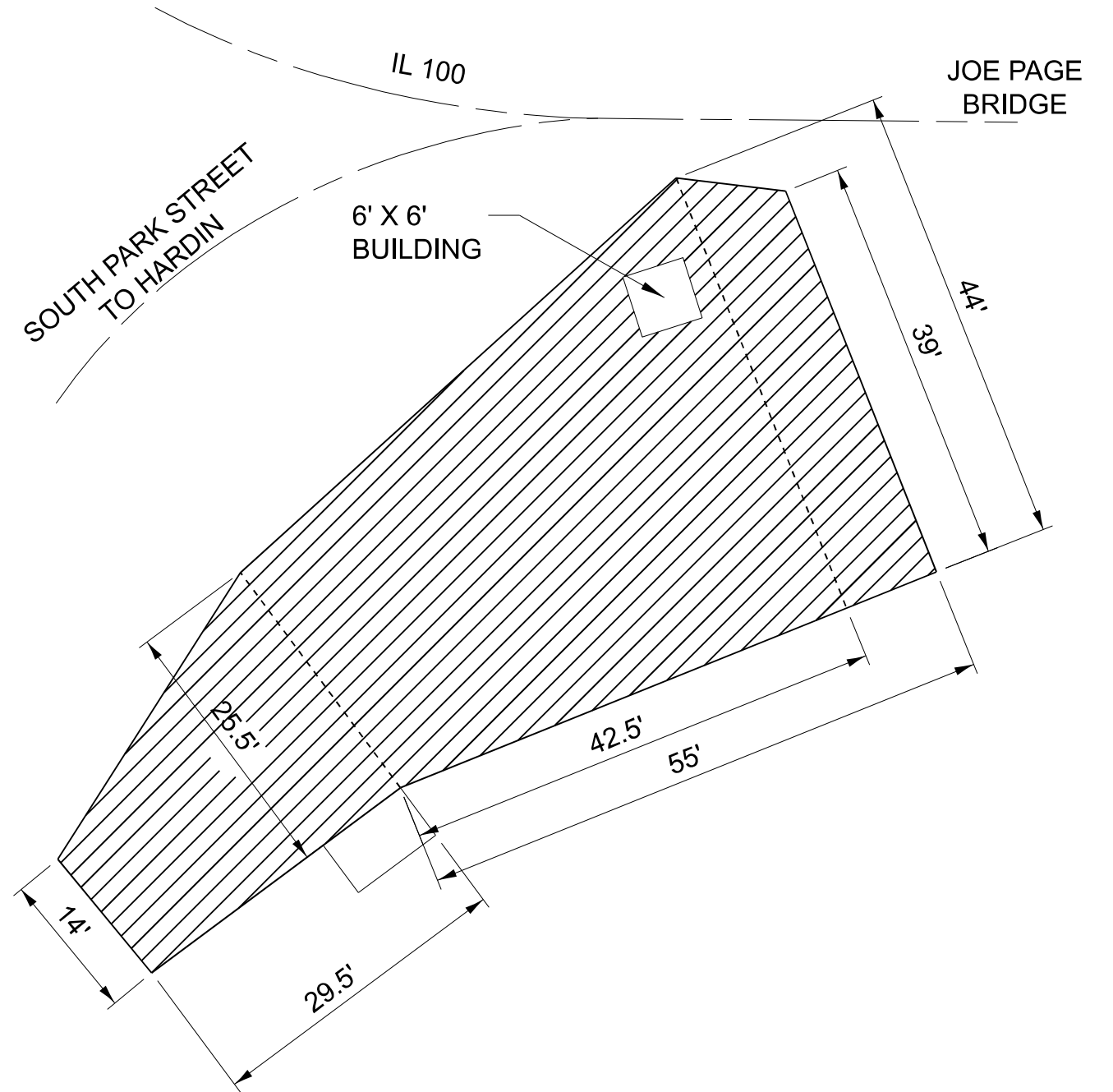
SCALE: SHEET OF 7 SHEETS STA. TO STA.

F.A.P. RTE.	SECTION	COUNTY	TOTAL SHEETS	SHEET NO.
N/A	DIST 8 SEAL COAT 2024-1	VARIOUS	10	5
ILLINOIS FED. AID PROJECT			CONTRACT NO. 76U10	

JOE PAGE BRIDGE PARKING LOT  
HARDIN BRIDGE  
HARDIN, IL 62047



LOCATION 3 MAP



BITUMINOUS SURFACE TREATMENT, A2 AREA = 295 SQ YDS

 BITUMINOUS SURFACE TREATMENT, A2

MODEL: Location 3 (Sheet)  
FILE NAME: c:\p\work\17101\metkuhan@illinois.gov\0977795\0876U10-shit-hp-an.dgn

USER NAME = MeiWu_An	DESIGNED -	REVISED -
	DRAWN -	REVISED -
	CHECKED -	REVISED -
PLOT DATE = 4/3/2024	DATE -	REVISED -

STATE OF ILLINOIS  
DEPARTMENT OF TRANSPORTATION

LOCATION 3  
JOE PAGE BRIDGE PARKING LOT

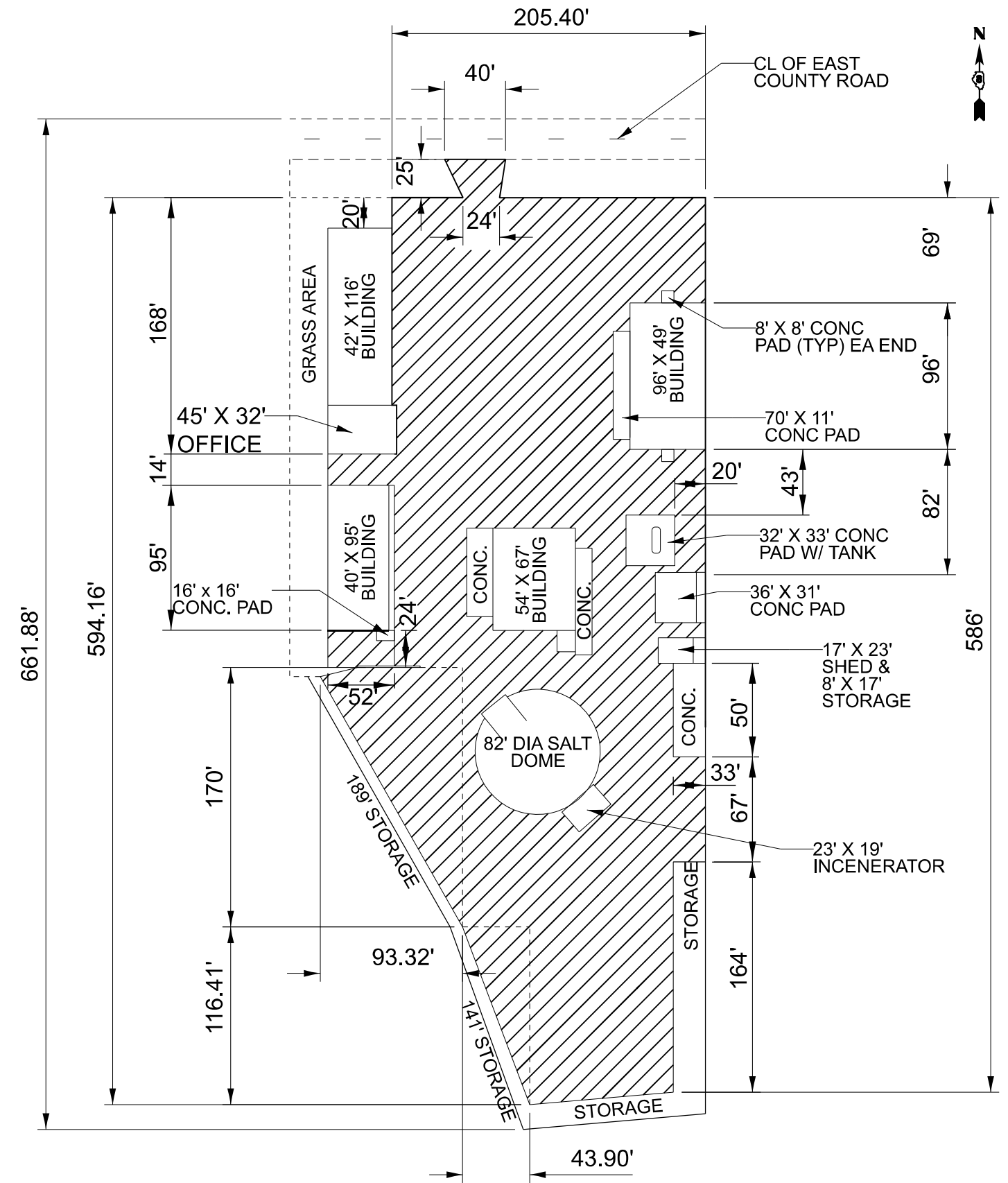
SCALE: SHEET OF 7 SHEETS STA. TO STA.

F.A.P. RTE.	SECTION	COUNTY	TOTAL SHEETS	SHEET NO.
N/A	DIST 8 SEAL COAT 2024-1	VARIOUS	10	6
CONTRACT NO. 76U10				
ILLINOIS FED. AID PROJECT				



LOCATION 4 MAP

JERSEYVILLE MAINTENANCE YARD  
 218 E. COUNTY ROAD  
 JERSEYVILLE, IL 62052



BITUMINOUS SURFACE TREATMENT, A2 AREA = 10188 SQ YDS

BITUMINOUS SURFACE TREATMENT, A2

MODEL: Location 4 (Sheet)  
 FILE NAME: c:\p\work\jerseymaint\plan.dgn

USER NAME = MeiWu.An	DESIGNED -	REVISED -
	DRAWN -	REVISED -
	CHECKED -	REVISED -
PLOT DATE = 4/3/2024	DATE -	REVISED -

STATE OF ILLINOIS  
 DEPARTMENT OF TRANSPORTATION

LOCATION 4  
 JERSEYVILLE MAINTENANCE YARD

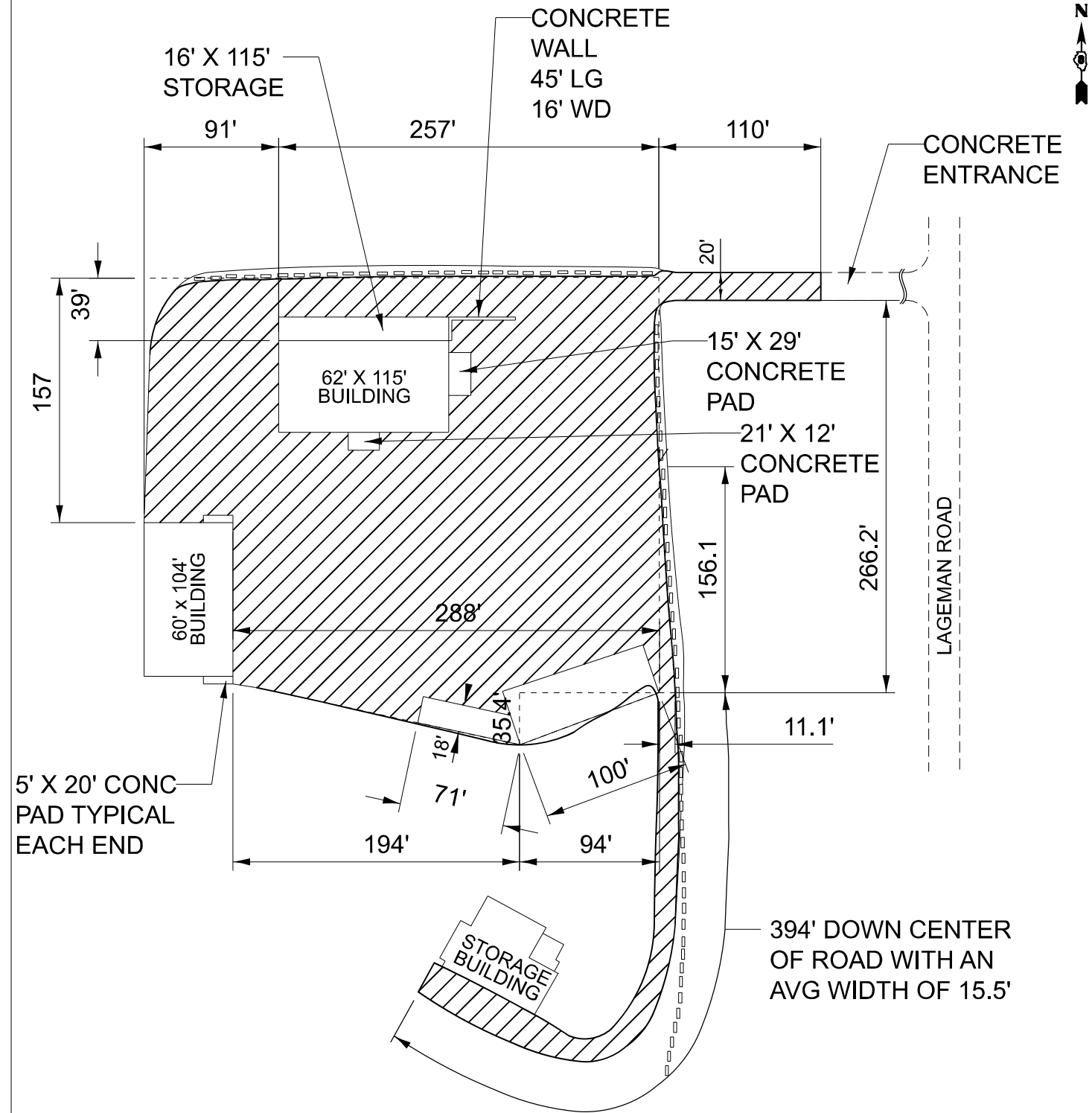
SCALE: SHEET OF 7 SHEETS STA. TO STA.

F.A.P. RTE.	SECTION	COUNTY	TOTAL SHEETS	SHEET NO.
N/A	DIST 8 SEAL COAT 2024-1	VARIOUS	10	7
CONTRACT NO. 76U10				
ILLINOIS FED. AID PROJECT				

GODFREY STORAGE  
8411 GODFREY ROAD  
GODFREY, IL 62035



LOCATION 5 MAP



BITUMINOUS SURFACE TREATMENT, A2 AREA = 9885 SQ YDS

BITUMINOUS SURFACE TREATMENT, A2

MODEL: Location 5 (Sheet)  
FILE NAME: c:\p\work\7610\maku\an@illinois.gov\d0977795\087610-0-sh-h-plan.dgn

USER NAME = Meiwu,An	DESIGNED -	REVISED -
	DRAWN -	REVISED -
	CHECKED -	REVISED -
PLOT DATE = 4/3/2024	DATE -	REVISED -

STATE OF ILLINOIS  
DEPARTMENT OF TRANSPORTATION

LOCATION 5  
GODFREY MAINTENANCE YARD

SCALE: SHEET OF 7 SHEETS STA. TO STA.

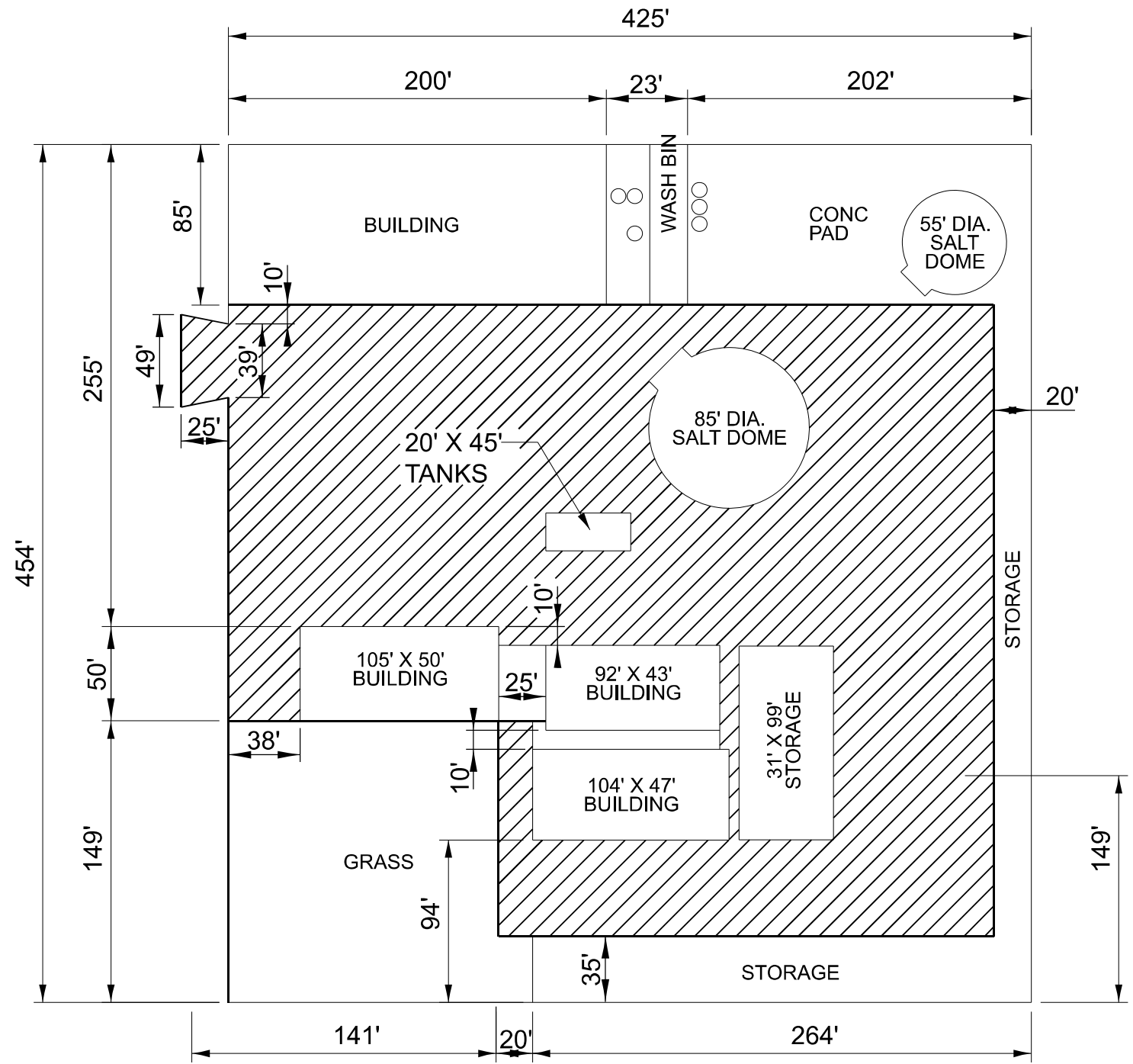
F.A.P. RTE.	SECTION	COUNTY	TOTAL SHEETS	SHEET NO.
N/A	DIST 8 SEAL COAT 2024-1	VARIOUS	10	8
CONTRACT NO. 76U10				
ILLINOIS FED. AID PROJECT				





LOCATION 6 MAP

HAMEL MAINTENANCE YARD  
6284 HAMEL DRIVE  
HAMEL, IL 62046



BITUMINOUS SURFACE TREATMENT, A2 AREA = 10456 SQ YDS

BITUMINOUS SURFACE TREATMENT, A2

MODEL: Location 6 (Sheet)  
FILE NAME: c:\p\work\road\hamel\hamel.dgn

USER NAME = MeiWu_An	DESIGNED -	REVISED -
	DRAWN -	REVISED -
	CHECKED -	REVISED -
PLOT DATE = 4/3/2024	DATE -	REVISED -

STATE OF ILLINOIS  
DEPARTMENT OF TRANSPORTATION

LOCATION 6  
HAMEL MAINTENANCE YARD

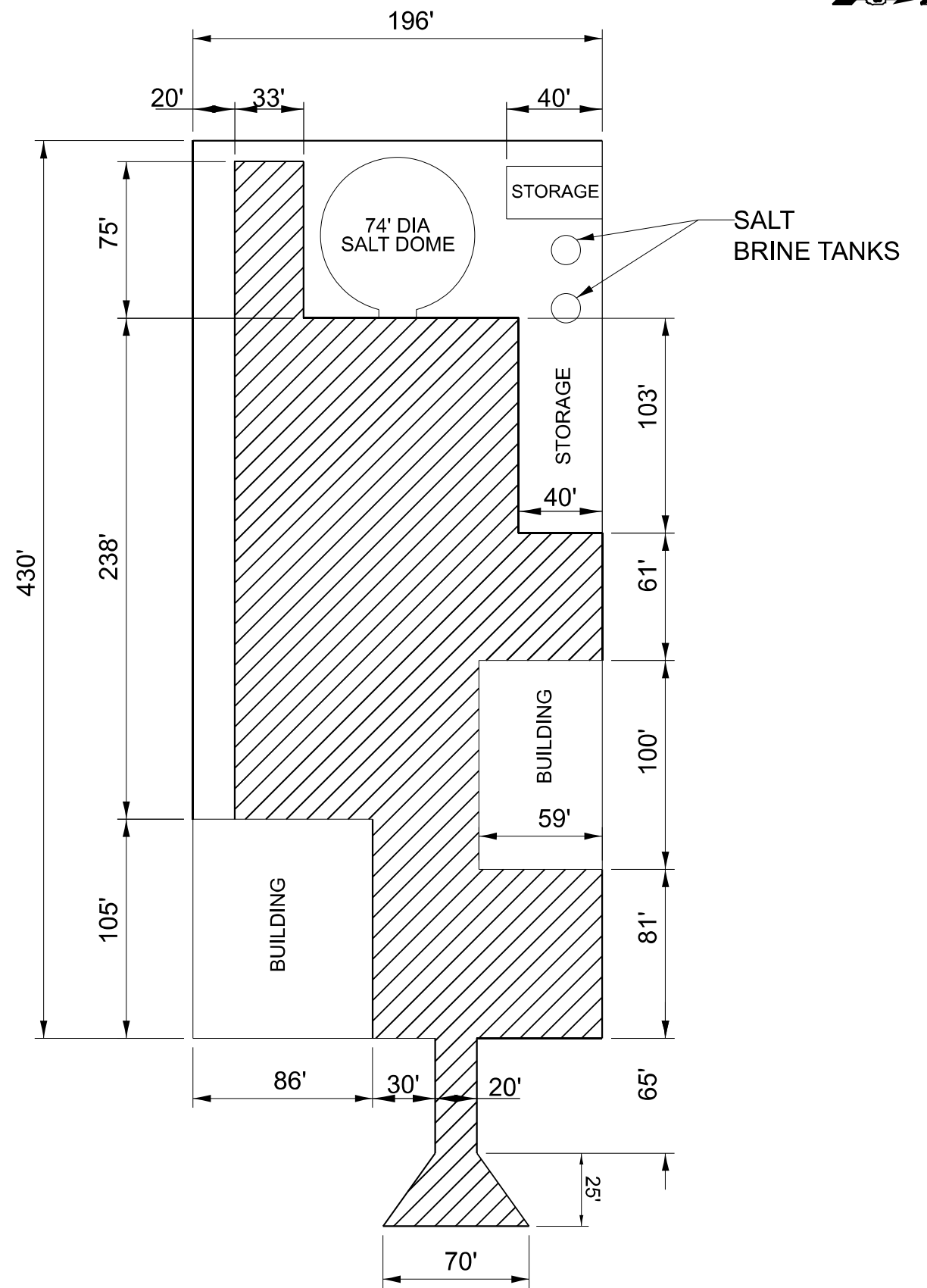
SCALE: SHEET OF 7 SHEETS STA. TO STA.

F.A.P. RTE.	SECTION	COUNTY	TOTAL SHEETS	SHEET NO.
N/A	DIST 8 SEAL COAT 2024-1	VARIOUS	10	9
CONTRACT NO. 76U10				
ILLINOIS FED. AID PROJECT				

MITCHELL STORAGE  
5805 IL 111  
EDWARDSVILLE, IL 62025



LOCATION 7 MAP



BITUMINOUS SURFACE TREATMENT, A2 AREA = 5436 SQ YDS

BITUMINOUS SURFACE TREATMENT, A2

MODEL: Location 7 (Sheet)  
FILE NAME: c:\p\work\7610\mitchell\mitchell.dgn

USER NAME = MeiWu_An	DESIGNED -	REVISED -
	DRAWN -	REVISED -
	CHECKED -	REVISED -
PLOT DATE = 4/3/2024	DATE -	REVISED -

STATE OF ILLINOIS  
DEPARTMENT OF TRANSPORTATION

LOCATION 7  
MITCHELL MAINTENANCE YARD

SCALE: SHEET OF 7 SHEETS STA. TO STA.

F.A.P. RTE.	SECTION	COUNTY	TOTAL SHEETS	SHEET NO.
N/A	DIST 8 SEAL COAT 2024-1	VARIOUS	10	10
CONTRACT NO. 76U10				
ILLINOIS FED. AID PROJECT				