

HOT-MIX ASPHALT MIXTURE REQUIREMENTS

MIXTURE TYPE	PERCENT AIR VOIDS @ NDES	× THICKNESS	× QMP
47TH STREET RECONSTRUCTION			
POLYMERIZED HOT-MIX ASPHALT SURFACE COURSE, SMA, IL-9.5, MIX "F", N80	3.5% @ 80 GYR	1 - 3/4"	QCP
POLYMERIZED HOT-MIX ASPHALT BINDER COURSE, IL-4.75, N50	3.5% @ 50 GYR	3/4"	QC/QA
HOT-MIX ASPHALT BASE COURSE (HMA BINDER IL-19.0)	4% @ 90 GYR	10-1/2"	QC/QA
47TH STREET RESURFACING			
POLYMERIZED HOT-MIX ASPHALT SURFACE COURSE, SMA, IL-9.5, MIX "F", N80	3.5% @ 80 GYR	1 - 3/4"	QCP
POLYMERIZED HOT-MIX ASPHALT BINDER COURSE, IL-4.75, N50	3.5% @ 50 GYR	3/4"	QC/QA
47TH STREET WIDENING			
POLYMERIZED HOT-MIX ASPHALT SURFACE COURSE, SMA, IL-9.5, MIX "F", N80	3.5% @ 80 GYR	1 - 3/4"	QCP
POLYMERIZED HOT-MIX ASPHALT BINDER COURSE, IL-4.75, N50	3.5% @ 50 GYR	3/4"	QC/QA
HOT-MIX ASPHALT BASE COURSE (HMA BINDER IL-19.0)	4% @ 90 GYR	10-1/2"	QC/QA
HMA BASE COURSE WIDENING (HMA BINDER IL-19.0)	4% @ 90 GYR	10-1/2"	QC/QA
EAST AVENUE RECONSTRUCTION			
POLYMERIZED HOT-MIX ASPHALT SURFACE COURSE, SMA, IL-9.5, MIX "F", N80	3.5% @ 80 GYR	1 - 3/4"	QCP
POLYMERIZED HOT-MIX ASPHALT BINDER COURSE, IL-4.75, N50	3.5% @ 50 GYR	3/4"	QC/QA
HOT-MIX ASPHALT BASE COURSE (HMA BINDER IL-19.0)	4% @ 90 GYR	10-1/2"	QC/QA
EAST AVENUE RESURFACING / BLUFF AVE			
POLYMERIZED HOT-MIX ASPHALT SURFACE COURSE, SMA, IL-9.5, MIX "F", N80	3.5% @ 80 GYR	1 - 3/4"	QCP
POLYMERIZED HOT-MIX ASPHALT BINDER COURSE, IL-4.75, N50	3.5% @ 50 GYR	3/4"	QC/QA
EAST AVENUE WIDENING / BLUFF AVE			
POLYMERIZED HOT-MIX ASPHALT SURFACE COURSE, SMA, IL-9.5, MIX "F", N80	3.5% @ 80 GYR	1 - 3/4"	QCP
POLYMERIZED HOT-MIX ASPHALT BINDER COURSE, IL-4.75, N50	3.5% @ 50 GYR	3/4"	QC/QA
HOT-MIX ASPHALT BASE COURSE (HMA BINDER IL-19.0)	4% @ 90 GYR	10-1/2"	QC/QA
HMA BASE COURSE WIDENING (HMA BINDER IL-19.0)	4% @ 90 GYR	10-1/2"	QC/QA
RESTORATION AREAS			
HOT-MIX ASPHALT SURFACE COURSE, IL-9.5, MIX "D", N70	4% @ 70 GYR	1 - 1/2"	QC/QA
HOT-MIX ASPHALT BINDER COURSE, IL-19.0, N70	4% @ 70 GYR	5"	QC/QA
RAILROAD (HMA PLUG)			
HOT-MIX ASPHALT BINDER COURSE, IL-19.0, N90	4% @ 90 GYR	12"	QC/QA
QMP DESIGNATION: QUALITY CONTROL / QUALITY ASSURANCE (QC/QA); QUALITY CONTROL FOR PERFORMANCE (QCP)			

1. THE UNIT WEIGHT USED TO CALCULATE ALL HOT-MIX ASPHALT SURFACE MIXTURES IS 112 LBS/SQ YD/INCH.
2. THE "AC TYPE" FOR POLYMERIZED HMA MIXTURES SHALL BE "SBS/SBR PG 76-22" AND FOR NON-POLYMERIZED HMA THE "AC TYPE" SHALL BE "PG 64-22" UNLESS MODIFIED BY RECLAIMED MATERIALS SPECIFICATIONS.

MODEL: Default
FILE NAME: \\G:\19\projects\17166\04_CADD\CADD_Sheets\17166\F11-Str-Gen-003.dgn



USER NAME = mjablonowska
PLOT SCALE = 2.0000' / in.
PLOT DATE = 5/28/2024

DESIGNED - TS
DRAWN - TS
CHECKED - CLG
DATE - 3/5/2024

REVISED -
REVISED -
REVISED -
REVISED -

**STATE OF ILLINOIS
DEPARTMENT OF TRANSPORTATION**

HOT-MIX ASPHALT MIXTURE REQUIREMENTS

SCALE: SHEET OF SHEETS STA. TO STA.

REVISED SHEET

GEN-03

F.A.U. RTE.	SECTION	COUNTY	TOTAL SHEETS	SHEET NO.
2719	3212TS-RR	COOK	336	5
CONTRACT NO. 62F11				
ILLINOIS FED. AID PROJECT				

CONSTRUCTION CODE						
ROADWAY URBAN	TRAFFIC SIGNALS	RAILROAD CROSSINGS	LIGHTING (IDOT)	BROOKFIELD LIGHTING	LA GRANGE LIGHTING AND EVP	MCCOOK LIGHTING
0004	0021	0021	0021	0021	0021	0021
80% FED 20% IDOT	80% FED 20% IDOT	80% FED 20% IDOT	80% FED 20% IDOT	100% LOCAL	100% LOCAL	100% LOCAL

CODE NO.	ITEM	UNIT	TOTAL QUANTITY	80% FED 20% IDOT	80% FED 20% IDOT	80% FED 20% IDOT	80% FED 20% IDOT	100% LOCAL	100% LOCAL	100% LOCAL
* 20100110	TREE REMOVAL (6 TO 15 UNITS DIAMETER)	UNIT	8	8						
* 20100210	TREE REMOVAL (OVER 15 UNITS DIAMETER)	UNIT	26	26						
20200100	EARTH EXCAVATION	CU YD	4,284	4,284						
20200200	ROCK EXCAVATION	CU YD	6,500	6,500						
20201200	REMOVAL AND DISPOSAL OF UNSUITABLE MATERIALS	CU YD	500	500						
20800150	TRENCH BACKFILL	CU YD	916	916						
21001000	GEOTECHNICAL FABRIC FOR GROUND STABILIZATION	SQ YD	2,865	2,865						
21101505	TOPSOIL EXCAVATION AND PLACEMENT	CU YD	353	353						
21101615	TOPSOIL FURNISH AND PLACE, 4"	SQ YD	5,148	5,148						
* 25000400	NITROGEN FERTILIZER NUTRIENT	POUND	63	63						
* 25000500	PHOSPHORUS FERTILIZER NUTRIENT	POUND	63	63						
* 25000600	POTASSIUM FERTILIZER NUTRIENT	POUND	63	63						
* 25100115	MULCH, METHOD 2	ACRE	1.0	1.0						
* 25200100	SOBDDING	SQ YD	5,031	5,031						



* SPECIALTY ITEMS
 ** 100% IDOT PAY ITEM

REVISED SHEET 6/3/2024

MODEL: D:\m\h\... FILE NAME: 103119\project\1716804_CADD\CADD_Sheet\103119-RR-500-001.dgn



USER NAME = mjablonska	DESIGNED - TS	REVISED -
PLOT SCALE = 2,0000' / in.	DRAWN - TS	REVISED -
PLOT DATE = 3/18/2024	CHECKED - CLG	REVISED -
	DATE - 3/5/2024	REVISED -

STATE OF ILLINOIS
 DEPARTMENT OF TRANSPORTATION

SUMMARY OF QUANTITIES

SCALE: SHEET 1 OF 20 SHEETS STA. TO STA.

F.A.U. RTE.	SECTION	COUNTY	TOTAL SHEETS	SHEET NO.
2719	3212TS-RR	COOK	336	6
CONTRACT NO. 62F11			ILLINOIS FED. AID PROJECT	

S00-01

CONSTRUCTION CODE						
ROADWAY URBAN	TRAFFIC SIGNALS	RAILROAD CROSSINGS	LIGHTING (IDOT)	BROOKFIELD LIGHTING	LA GRANGE LIGHTING AND EVP	MCCOOK LIGHTING
0004	0021	0021	0021	0021	0021	0021

CODE NO.	ITEM	UNIT	TOTAL QUANTITY	80% FED 20% IDOT	80% FED 20% IDOT	80% FED 20% IDOT	80% FED 20% IDOT	100% LOCAL	100% LOCAL	100% LOCAL
* 25200110	SODDING, SALT TOLERANT	SQ YD	5,148	5,148	△					
25200200	SUPPLEMENTAL WATERING	UNIT	91	91						
28000250	TEMPORARY EROSION CONTROL SEEDING	POUND	79	79						
* 28000400	PERIMETER EROSION BARRIER	FOOT	4,654	4,654						
* 28000510	INLET FILTERS	EACH	81	81						
28100109	STONE RIPRAP, CLASS A5	SQ YD	94	94						
* 28200200	FILTER FABRIC	SQ YD	89	89						
30300001	AGGREGATE SUBGRADE IMPROVEMENT	CU YD	1,144	1,144						
30300112	AGGREGATE SUBGRADE IMPROVEMENT 12"	SQ YD	17,150	17,150						
31101200	SUBBASE GRANULAR MATERIAL, TYPE B 4"	SQ YD	1,614	1,614						
35501326	HOT-MIX ASPHALT BASE COURSE, 10 1/2"	SQ YD	11,456	11,456						
35600718	HOT-MIX ASPHALT BASE COURSE WIDENING, 10 1/2"	SQ YD	1,165	1,165						
40600290	BITUMINOUS MATERIALS (TACK COAT)	POUND	24,610	24,610						

* SPECIALTY ITEMS
 ** 100% IDOT PAY ITEM

△ REVISED SHEET 6/3/2024

S00-02

MODEL: Default
 FILE NAME: \\G:\190\projects\17168\04_CADD\CADD_Sheets\0162F11-1-18-2024\002.dgn



USER NAME = mjablonowska	DESIGNED - TS	REVISED -
PLOT SCALE = 2,0000' / in.	DRAWN - TS	REVISED -
PLOT DATE = 3/18/2024	CHECKED - CLG	REVISED -
	DATE - 3/5/2024	REVISED -

STATE OF ILLINOIS
 DEPARTMENT OF TRANSPORTATION

SUMMARY OF QUANTITIES

SCALE: SHEET 2 OF 20 SHEETS STA. TO STA.

F.A.U. RTE.	SECTION	COUNTY	TOTAL SHEETS	SHEET NO.
2719	3212TS-RR	COOK	336	7
CONTRACT NO. 62F11			ILLINOIS FED. AID PROJECT	

CONSTRUCTION CODE

CODE NO.	ITEM	UNIT	TOTAL QUANTITY	CONSTRUCTION CODE							
				ROADWAY URBAN	TRAFFIC SIGNALS	RAILROAD CROSSINGS	LIGHTING (IDOT)	BROOKFIELD LIGHTING	LA GRANGE LIGHTING AND EVP	MCCOOK LIGHTING	
				0004	0021	0021	0021	0021	0021	0021	
				80% FED 20% IDOT	80% FED 20% IDOT	80% FED 20% IDOT	80% FED 20% IDOT	100% LOCAL	100% LOCAL	100% LOCAL	
40600370	LONGITUDINAL JOINT SEALANT	FOOT	74,452	74,452							
40600400	MIXTURE FOR CRACKS, JOINTS, AND FLANGEWAYS	TON	25	25							
40600982	HOT-MIX ASPHALT SURFACE REMOVAL - BUTT JOINT	SQ YD	350	350							
40603085	HOT-MIX ASPHALT BINDER COURSE, IL-19.0, N70	TON	36	36							
40603200	POLYMERIZED HOT-MIX ASPHALT BINDER COURSE, IL-4.75, N50	TON	1,877	1,877							
40603090	HOT - MIX ASPHALT BINDER COURSE, IL - 19.0, N90	TON	63	63							
40604062	HOT-MIX ASPHALT SURFACE COURSE, IL-9.5, MIX "D", N70	TON	1,409	1,409							
40605026	POLYMERIZED HOT-MIX ASPHALT SURFACE COURSE, STONE MATRIX ASPHALT, 9.5, MIX "F", N80	TON	1,879	1,879							
40800050	INCIDENTAL HOT-MIX ASPHALT SURFACING	TON	63	63							
42001300	PROTECTIVE COAT	SQ YD	2,892	2,892							
42200100	PORTLAND CEMENT CONCRETE RAILROAD CROSSING	SQ YD	512				512				
42300400	PORTLAND CEMENT CONCRETE DRIVEWAY PAVEMENT, 8 INCH	SQ YD	612	612							
42400200	PORTLAND CEMENT CONCRETE SIDEWALK 5 INCH	SQ FT	9,121	9,121							
42400800	DETECTABLE WARNINGS	SQ FT	10	10							
44000100	PAVEMENT REMOVAL	SQ YD	11,488	11,488							
44000158	HOT-MIX ASPHALT SURFACE REMOVAL, 2 1/4"	SQ YD	16,631	16,631							

* SPECIALTY ITEMS
 ** 100% IDOT PAY ITEM

REVISED SHEET 6/3/2024

S00-03

MODEL: Default
 FILE NAME: \\G:\19\projects\17166\04_CADD\CADD_Sheets\0162F11-1-19-500-003.dgn



USER NAME = mjablonowska	DESIGNED - TS	REVISED -
PLOT SCALE = 2,0000' / in.	DRAWN - TS	REVISED -
PLOT DATE = 3/18/2024	CHECKED - CLG	REVISED -
	DATE - 3/5/2024	REVISED -

STATE OF ILLINOIS
 DEPARTMENT OF TRANSPORTATION

SUMMARY OF QUANTITIES

SCALE: SHEET 3 OF 20 SHEETS STA. TO STA.

F.A.U. RTE.	SECTION	COUNTY	TOTAL SHEETS	SHEET NO.
2719	3212TS-RR	COOK	336	8
CONTRACT NO. 62F11			ILLINOIS FED. AID PROJECT	

REV-SEP

CONSTRUCTION CODE						
ROADWAY URBAN	TRAFFIC SIGNALS	RAILROAD CROSSINGS	LIGHTING (IDOT)	BROOKFIELD LIGHTING	LA GRANGE LIGHTING AND EVP	MCCOOK LIGHTING
0004	0021	0021	0021	0021	0021	0021

CODE NO.	ITEM	UNIT	TOTAL QUANTITY	80% FED 20% IDOT	80% FED 20% IDOT	80% FED 20% IDOT	80% FED 20% IDOT	100% LOCAL	100% LOCAL	100% LOCAL
* Z0033028	MAINTENANCE OF LIGHTING SYSTEM	CAL MO	12					4	4	4
Z0033046	RE-OPTIMIZE TRAFFIC SIGNAL SYSTEM LEVEL 2	EACH	1		1					
Z0048665	RAILROAD PROTECTIVE LIABILITY INSURANCE	L SUM	1			1				
Z0064800	SELECTIVE CLEARING	UNIT	4	4						
* Z0067100	STEEL CASINGS 8"	FOOT	195		195					
* Z0073510	TEMPORARY TRAFFIC SIGNAL TIMING	EACH	8							
* A2002816	TREE, CATALPA SPECIOSA (NORTHERN CATALPA), 2" CALIPER, BALLED AND BURLAPPED	EACH	4	4						
A2005614	TREE, OSTRYA VIRGINIANA (AMERICAN HOPHORNBEAM), 1-3/4" CALIPER, BALLED AND BURLAPPED	EACH	19	19						
* A2006516	TREE, QUERCUS BICOLOR (SWAMP WHITE OAK), 2" CALIPER, BALLED AND BURLAPPED	EACH	5	5						
* B2001446	TREE, CORNUS MAS 'GOLDEN GLORY' (GOLDEN GLORY CORNELIAN CHERRY DOGWOOD), 6' HEIGHT, CLUMP FORM, B&B	EACH	14	14						
* B2010070	TREE, CLADRASTIS KENTUCKEA (AMERICAN YELLOWWOOD), 2" CALIPER, BALLED AND BURLAPPED	EACH	8	8						
* C2000436	SHRUB, ARONIA ARBUTIFOLIA BRILLIANT ISSIMA (BRILLANT RED CHOKEBERRY), 3' HEIGHT, BALLED AND BURLAPPED	EACH	185	185						
* C2003424	SHRUB, HYDRANGEA ARBORESCENS ANNABELLE (ANNABELLE SMOOTH HYDRANGEA), 2' HEIGHT, BALLED AND BURLAPPED	EACH	130	130						
* C2005818	SHRUB, RHUS AROMATICA GRO-LOW (GRO-LOW FRAGRANT SUMAC), 18" WIDTH, BALLED AND BURLAPPED	EACH	95	95						
* C2011024	SHRUB, SYRINGA PATULA MISS KIM (MISS KIM MANCHURIAN LILAC), 2' HEIGHT, BALLED AND BURLAPPED	EACH	96	96						



* SPECIALTY ITEMS
 ** 100% IDOT PAY ITEM

REVISED SHEET 6/3/2024

S00-16

MODEL: Default
 FILE NAME: \\G:\19\projects\17168\04_CADD\CADD_Sheets\0162F11-1-16-500-016.dgn



USER NAME = mjablonowska	DESIGNED - TS	REVISED -
PLOT SCALE = 2,0000' / in.	DRAWN - TS	REVISIED -
PLOT DATE = 3/18/2024	CHECKED - CLG	REVISIED -
	DATE - 3/5/2024	REVISIED -

STATE OF ILLINOIS
 DEPARTMENT OF TRANSPORTATION

SUMMARY OF QUANTITIES

SCALE: SHEET 16 OF 20 SHEETS STA. TO STA.

F.A.U. RTE.	SECTION	COUNTY	TOTAL SHEETS	SHEET NO.
2719	3212TS-RR	COOK	336	21
CONTRACT NO. 62F11				
ILLINOIS FED. AID PROJECT				

REV-SEP

CONSTRUCTION CODE						
ROADWAY URBAN	TRAFFIC SIGNALS	RAILROAD CROSSINGS	LIGHTING (IDOT)	BROOKFIELD LIGHTING	LA GRANGE LIGHTING AND EVP	MCCOOK LIGHTING
0004	0021	0021	0021	0021	0021	0021

CODE NO.	ITEM	UNIT	TOTAL QUANTITY	80% FED 20% IDOT	80% FED 20% IDOT	80% FED 20% IDOT	80% FED 20% IDOT	100% LOCAL	100% LOCAL	100% LOCAL
* D2001672	EVERGREEN, JUNIPERUS VIRGINIANA CANAERTII (CANAERTI RED CEDAR), 6' HEIGHT, BALLED AND BURLAPPED	EACH	60	60						
* F30099Y2	SEEDLING OSTRYA VIRGINIANA (IRONWOOD AMERICAN HOPHORNBEAM), 2-YEAR OLD, BARE ROOT	UNIT	19	19						
* K0012990	PERENNIAL PLANTS, ORNAMENTAL TYPE, GALLON POT	UNIT	5	5						
* K0026700	TREE CARE	EACH	4	4						
K0029634	WEED CONTROL, PRE-EMERGRNT GRANULAR HERBICIDE	POUND	5	5						
X6350108	FLEXIBLE DELINEATORS	EACH	51	51						
X5510010	STORM SEWER CONNECTION	EACH	22	22						
* X0324085	EMERGENCY VEHICLE PRIORITY SYSTEM LINE SENSOR CABLE, NO. 20 3/C	FOOT	778						778	
* X0325922	CELLULAR MODEM	EACH	1		1					
X0326806	WASHOUT BASIN	L SUM	1	1						
* X0327236	TEMPORARY WOOD POLE, 50 FT., CLASS 4	EACH	1				1			
X0327976	TRACK MONITORING	CAL DA	30	30						
X1200058	INLET RISER STRUCTURES (OPEN BOTTOM)	EACH	11	11						

* SPECIALTY ITEMS
 ** 100% IDOT PAY ITEM

REVISED SHEET 6/3/2024

S00-17

MODEL: D:\a\h\... FILE NAME: I:\1190\project\17168004_CADD\CADD_Sheets\0162F11-1-18-2024\017.dgn



USER NAME = mjablonowska	DESIGNED - TS	REVISED -
PLOT SCALE = 2,0000' / in.	DRAWN - TS	REVISIONS -
PLOT DATE = 3/18/2024	CHECKED - CLG	REVISIONS -
	DATE - 3/5/2024	REVISIONS -

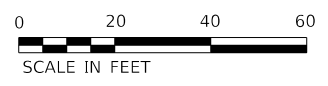
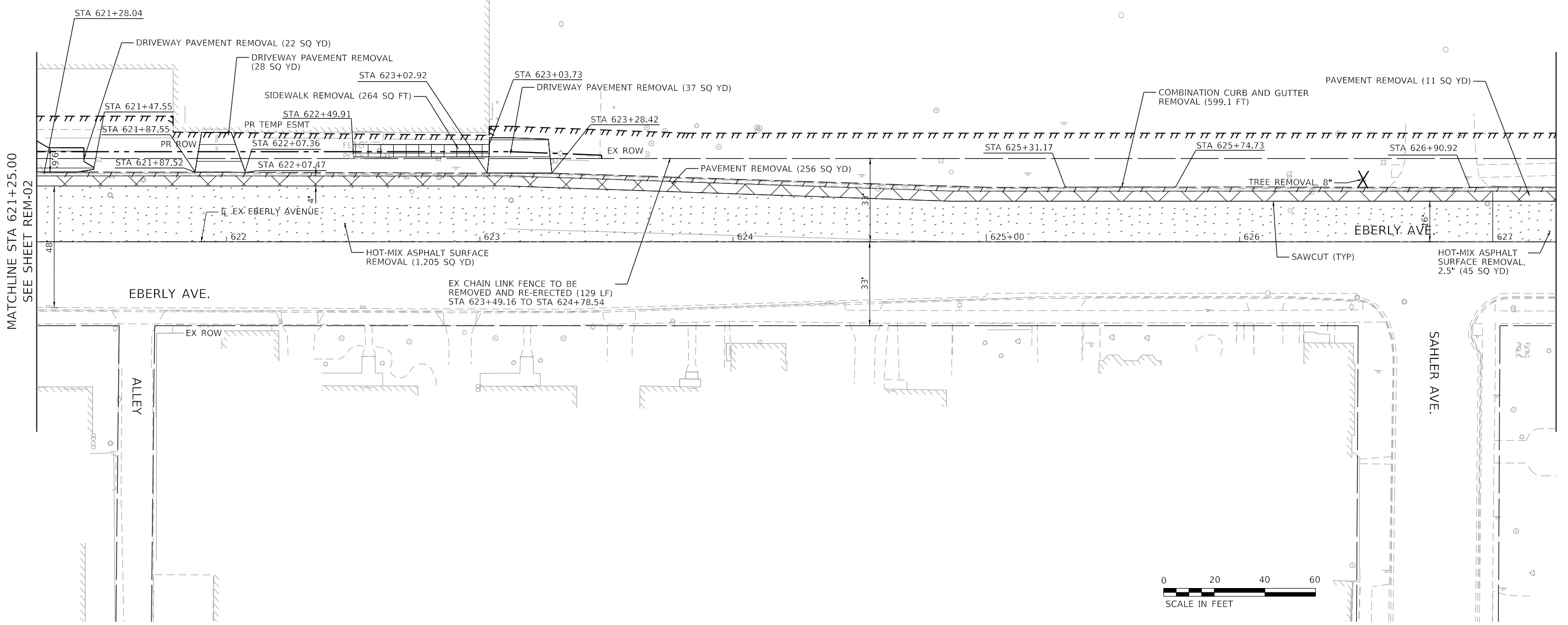
STATE OF ILLINOIS
 DEPARTMENT OF TRANSPORTATION

SUMMARY OF QUANTITIES

SCALE: SHEET 17 OF 20 SHEETS STA. TO STA.

F.A.U. RTE.	SECTION	COUNTY	TOTAL SHEETS	SHEET NO.
2719	3212TS-RR	COOK	336	22
CONTRACT NO. 62F11			ILLINOIS FED. AID PROJECT	

REV-SEP



LEGEND

	HOT-MIX ASPHALT SURFACE REMOVAL, 2.5"		SIDEWALK REMOVAL		SELECTIVE CLEARING		LINEAR REMOVAL
	PAVEMENT REMOVAL		DRIVEWAY PAVEMENT REMOVAL		TREE REMOVAL (SIZE SPECIFIED)		TREE CARE (AT DIRECTION OF THE ENGINEER)

REVISED SHEET

REM-10

MODEL: D:\62F11-Submittal\62F11-Submittal.dwg
 FILE NAME: 20240511-2024-000-47th Street at East Avenue\CAD\CAD_Sheets\62F11-Submittal.dwg



USER NAME = Schaefn	DESIGNED - NWS	REVISED -
PLOT SCALE = 40.0000 ' / in.	DRAWN - DVP	REVISED -
PLOT DATE = 5/29/2024	CHECKED - ALM	REVISED -
	DATE - 3/5/2024	REVISED -

STATE OF ILLINOIS
DEPARTMENT OF TRANSPORTATION

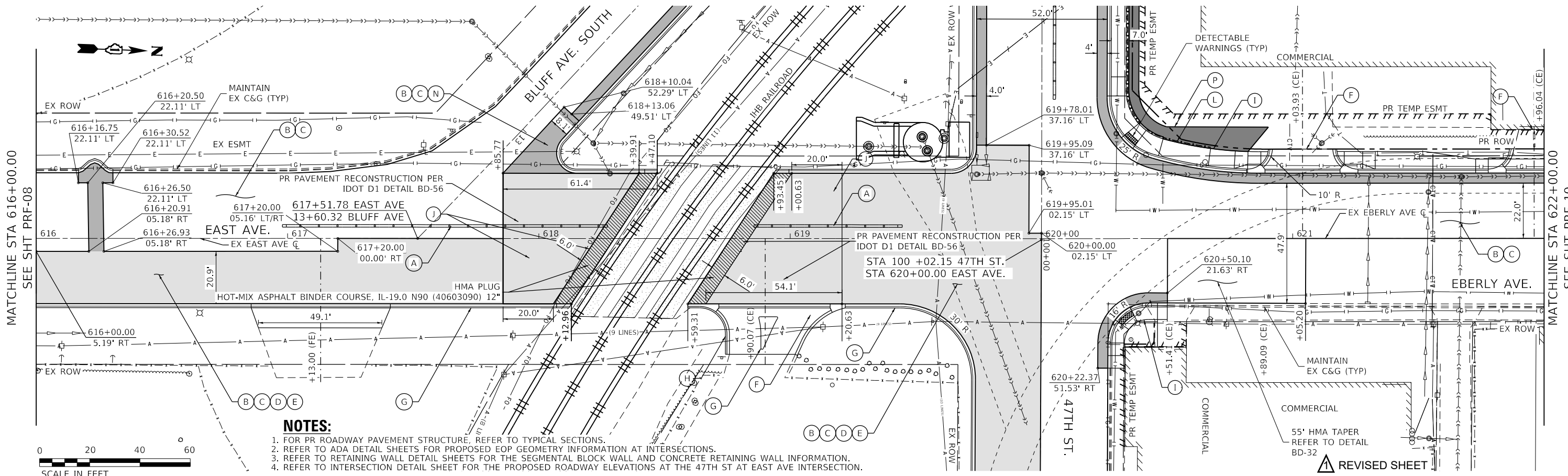
EAST AVENUE AT 47TH STREET
REMOVAL PLANS

SCALE: 1" = 20' SHEET 10 OF 11 SHEETS STA. 621+25.00 TO STA. 627+25.00

F.A.U. RTE.	SECTION	COUNTY	TOTAL SHEETS	SHEET NO.
2719	3212TS-RR	COOK	336	58
CONTRACT NO. 62F11			ILLINOIS FED. AID PROJECT	

PLAN	SURVEYED	DATE
	PLOTTED	
	ALIGNMENT CHECKED	
	NOTE BOOK	
	NO.	
	FILE NAME	
	NO.	

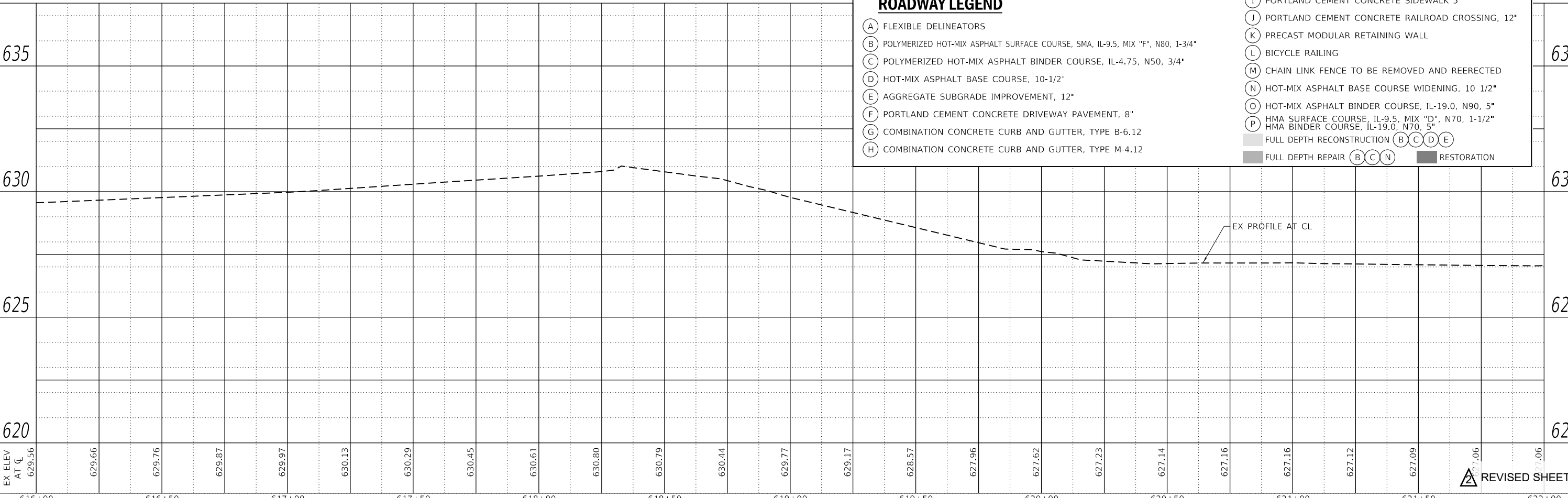
PROFILE	SURVEYED	DATE
	PLOTTED	
	GRADES CHECKED	
	NOTE BOOK	
	NO.	
	FILE NAME	
	NO.	



- NOTES:**
- FOR PR ROADWAY PAVEMENT STRUCTURE, REFER TO TYPICAL SECTIONS.
 - REFER TO ADA DETAIL SHEETS FOR PROPOSED EOP GEOMETRY INFORMATION AT INTERSECTIONS.
 - REFER TO RETAINING WALL DETAIL SHEETS FOR THE SEGMENTAL BLOCK WALL AND CONCRETE RETAINING WALL INFORMATION.
 - REFER TO INTERSECTION DETAIL SHEET FOR THE PROPOSED ROADWAY ELEVATIONS AT THE 47TH ST AT EAST AVE INTERSECTION.



ROADWAY LEGEND	
(A)	FLEXIBLE DELINEATORS
(B)	POLYMERIZED HOT-MIX ASPHALT SURFACE COURSE, SMA, IL-9.5, MIX "F", N80, 1-3/4"
(C)	POLYMERIZED HOT-MIX ASPHALT BINDER COURSE, IL-4.75, N50, 3/4"
(D)	HOT-MIX ASPHALT BASE COURSE, 10-1/2"
(E)	AGGREGATE SUBGRADE IMPROVEMENT, 12"
(F)	PORTLAND CEMENT CONCRETE DRIVEWAY PAVEMENT, 8"
(G)	COMBINATION CONCRETE CURB AND GUTTER, TYPE B-6.12
(H)	COMBINATION CONCRETE CURB AND GUTTER, TYPE M-4.12
(I)	PORTLAND CEMENT CONCRETE SIDEWALK 5"
(J)	PORTLAND CEMENT CONCRETE RAILROAD CROSSING, 12"
(K)	PRECAST MODULAR RETAINING WALL
(L)	BICYCLE RAILING
(M)	CHAIN LINK FENCE TO BE REMOVED AND REERECTED
(N)	HOT-MIX ASPHALT BASE COURSE WIDENING, 10 1/2"
(O)	HOT-MIX ASPHALT BINDER COURSE, IL-19.0, N90, 5"
(P)	HMA SURFACE COURSE, IL-9.5, MIX "D", N70, 1-1/2" HMA BINDER COURSE, IL-19.0, N70, 5"
(B)(C)(D)(E)	FULL DEPTH RECONSTRUCTION
(B)(C)(N)	FULL DEPTH REPAIR
(A)(B)(C)(D)(E)(F)(G)(H)(I)(J)(K)(L)(M)(N)(O)(P)	RESTORATION



MODEL: D:\62F11\site\plan\0026
FILE NAME: W:\projects\1716604_CADD\CADD_Sheets\162F11\site\plan\0026.dwg



USER NAME	= mjablonowska	DESIGNED	- TS	REVISED	-
		DRAWN	- TS	REVISED	-
		CHECKED	- CLG	REVISED	-
		DATE	- 3/5/2024	REVISED	-

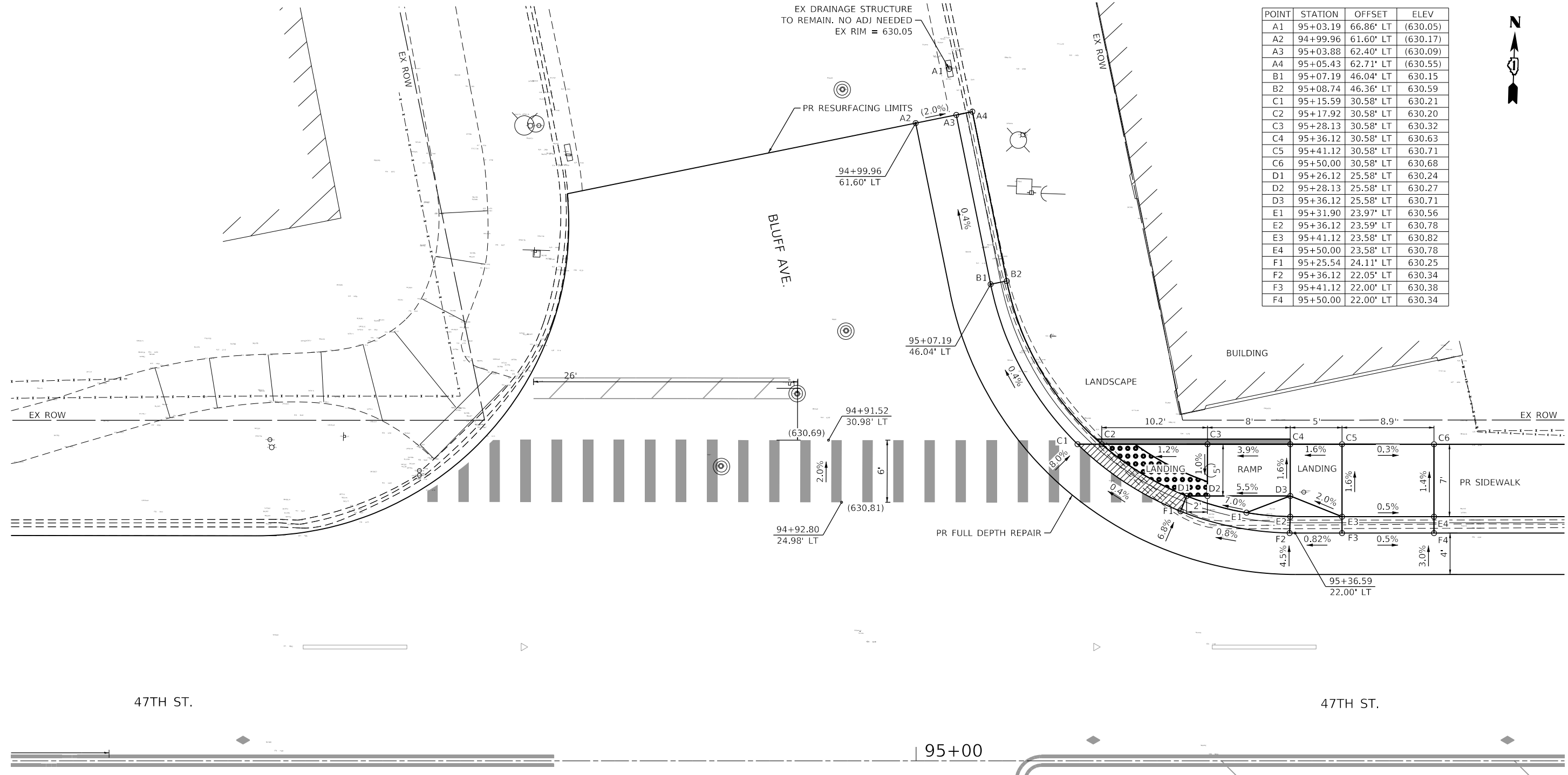
**STATE OF ILLINOIS
DEPARTMENT OF TRANSPORTATION**

**EAST AVENUE AT 47TH STREET
ROADWAY PLAN AND PROFILE**

SCALE: 1"=20' SHEET 9 OF 11 SHEETS STA. 616+00 TO STA. 622+00

F.A.U. RTE.	SECTION	COUNTY	TOTAL SHEETS	SHEET NO.
2719	3212TS-RR	COOK	336	68
CONTRACT NO. 62F11				
ILLINOIS FED. AID PROJECT				

POINT	STATION	OFFSET	ELEV
A1	95+03.19	66.86' LT	(630.05)
A2	94+99.96	61.60' LT	(630.17)
A3	95+03.88	62.40' LT	(630.09)
A4	95+05.43	62.71' LT	(630.55)
B1	95+07.19	46.04' LT	630.15
B2	95+08.74	46.36' LT	630.59
C1	95+15.59	30.58' LT	630.21
C2	95+17.92	30.58' LT	630.20
C3	95+28.13	30.58' LT	630.32
C4	95+36.12	30.58' LT	630.63
C5	95+41.12	30.58' LT	630.71
C6	95+50.00	30.58' LT	630.68
D1	95+26.12	25.58' LT	630.24
D2	95+28.13	25.58' LT	630.27
D3	95+36.12	25.58' LT	630.71
E1	95+31.90	23.97' LT	630.56
E2	95+36.12	23.59' LT	630.78
E3	95+41.12	23.58' LT	630.82
E4	95+50.00	23.58' LT	630.78
F1	95+25.54	24.11' LT	630.25
F2	95+36.12	22.05' LT	630.34
F3	95+41.12	22.00' LT	630.38
F4	95+50.00	22.00' LT	630.34



47TH ST.

47TH ST.

95+00

BLUFF AVE AT 47TH STREET



ADA LEGEND

	DETECTABLE WARNING (42400800)
	DEPRESSED CURB AND GUTTER
	PROPOSED SIDE CURB
(X.XX%)	EXISTING SLOPE
(XX.XX)	EXISTING ELEVATION

MODEL: Default
 FILE NAME: \\0119\projects\17168\04_CADD\CADD_Sheets\17168\F11-17168-ramp-ada-001.dgn



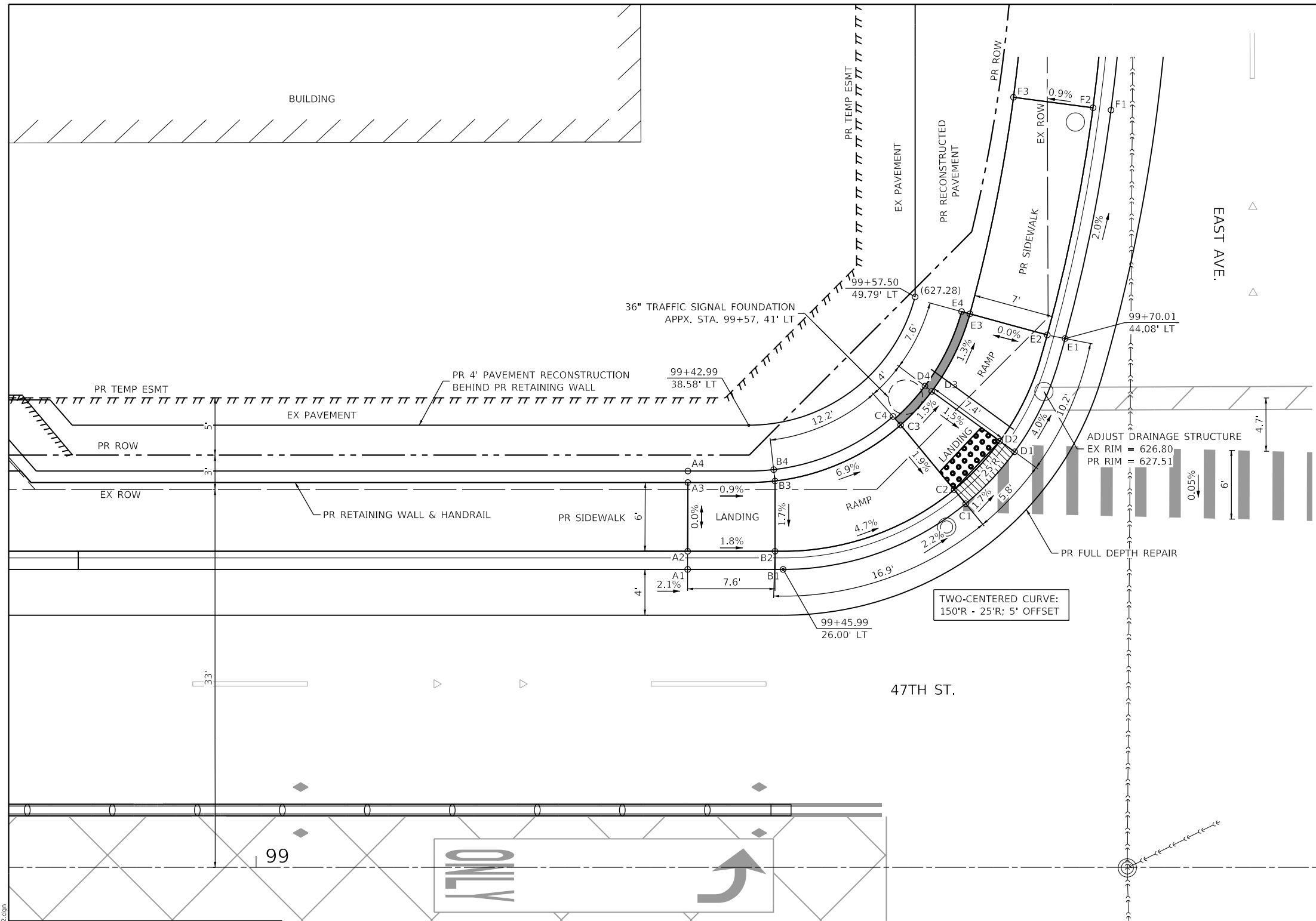
USER NAME = mjablonska	DESIGNED - TS	REVISED -
PLOT SCALE = 10.0000 ' / in.	DRAWN - TS	REVISED -
PLOT DATE = 5/29/2024	CHECKED - CLG	REVISED -
	DATE - 3/5/2024	REVISED -

**STATE OF ILLINOIS
DEPARTMENT OF TRANSPORTATION**

ADA RAMP DETAILS

SCALE: 1"=5' SHEET 1 OF 17 SHEETS STA. TO STA.

		REVISIED SHEET		ADA-01
		F.A.U. RTE.	SECTION	
2719	3212TS-RR	COOK	336	81
CONTRACT NO. 62F11				
ILLINOIS FED. AID PROJECT				



POINT	STATION	OFFSET	ELEV
A1	99+37.66	26' LT	628.37
A2	99+37.66	27.58' LT	628.81
A3	99+37.66	33.58' LT	628.81
A4	99+37.66	34.58' LT	(627.47)
B1	99+45.99	26' LT	628.20
B2	99+45.28	27.58' LT	628.64
B3	99+45.28	33.71' LT	628.74
B4	99+45.17	34.71' LT	(627.42)
C1	99+61.92	31.74' LT	627.82
C2	99+60.91	32.96' LT	627.81
C3	99+56.24	38.60' LT	627.95
C4	99+55.58	39.35' LT	(627.34)
D1	99+66.19	36.27' LT	627.73
D2	99+64.91	37.20' LT	627.72
D3	99+58.96	41.54' LT	627.83
D4	99+58.16	42.14' LT	(627.29)
E1	99+70.57	46.08' LT	627.30
E2	99+69.04	46.46' LT	627.74
E3	99+62.28	48.31' LT	627.74
E4	99+61.32	48.57' LT	(627.21)
F1	99+74.60	66.09' LT	626.70
F2	99+73.03	66.29' LT	627.14
F3	99+66.09	67.20' LT	627.08

47TH ST.

EAST AVE.

EAST AVE AT 47TH STREET

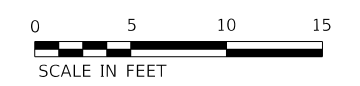
100+00
1620+00

ADA LEGEND

- DETECTABLE WARNING (42400800)
- DEPRESSED CURB AND GUTTER
- PROPOSED SIDE CURB
- (X.XX%) EXISTING SLOPE
- (XX.XX) EXISTING ELEVATION

NOTES

1. REFER TO RETAINING WALL DETAIL FOR MORE INFORMATION. ALL ELEVATIONS PROPOSED ON THIS DETAIL ARE FOR AT FINAL GRADE ELEVATIONS.
2. REFER TO INTERSECTION GRADING PLAN FOR INTERSECTION ELEVATION AND ROADWAY CROSS SLOPES



MODEL: Default; FILE NAME: \\0119\projects\17166\04_CADD\CADD_Sheets\17166\11-shc-detailed-ada-02.dgn



USER NAME = mjablonska	DESIGNED - TS	REVISED -
PLOT SCALE = 10.0000 ' / in.	DRAWN - TS	REVISED -
PLOT DATE = 5/30/2024	CHECKED - CLG	REVISED -
	DATE - 3/5/2024	REVISED -

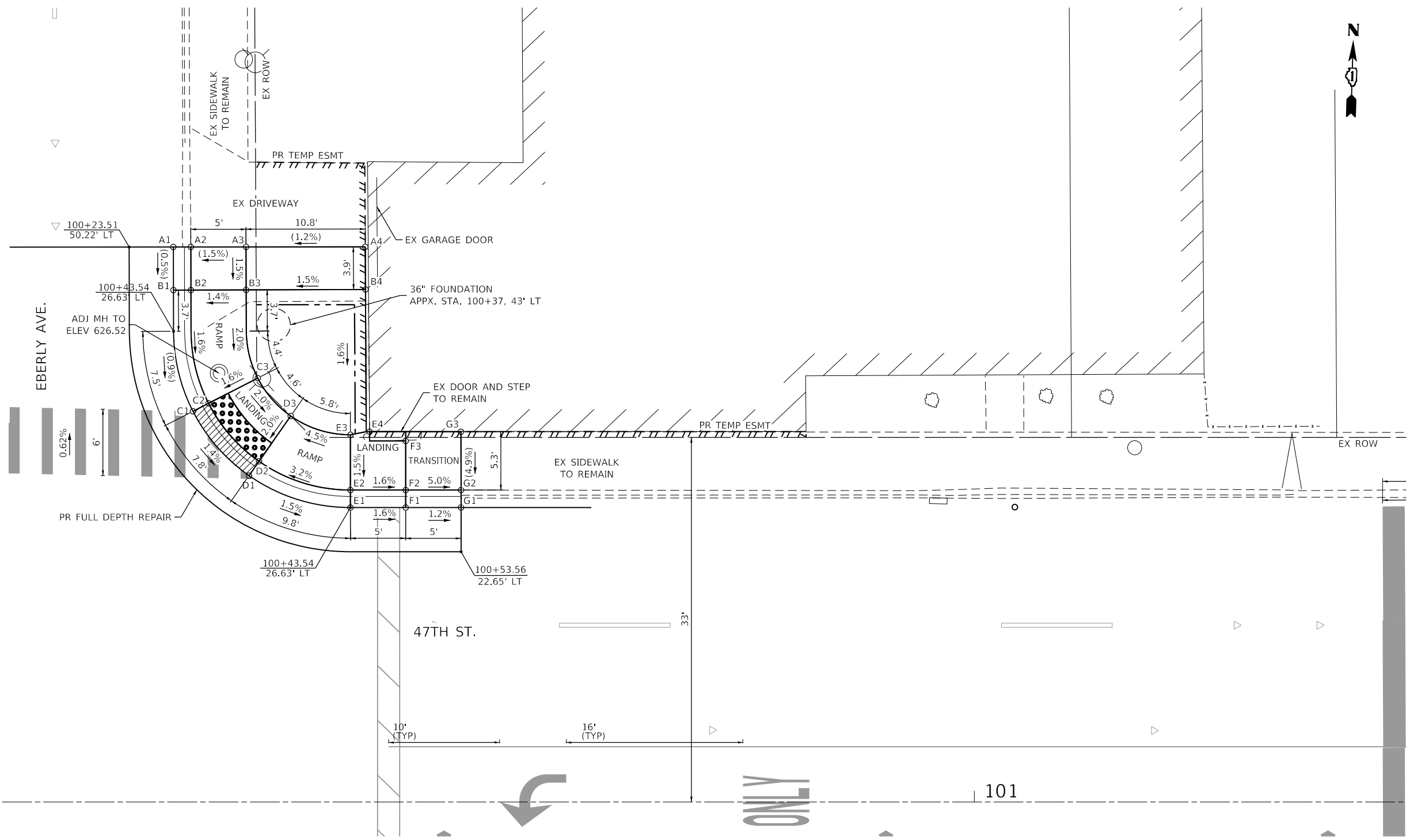
**STATE OF ILLINOIS
DEPARTMENT OF TRANSPORTATION**

ADA RAMP DETAILS

SCALE: 1"=5' SHEET 2 OF 17 SHEETS STA. TO STA.

REVISED SHEET ADA-02	
F.A.U. RTE.	SECTION
2719	3212TS-RR
COUNTY	COOK
TOTAL SHEETS	336
SHEET NO.	82
CONTRACT NO. 62F11	
ILLINOIS FED. AID PROJECT	

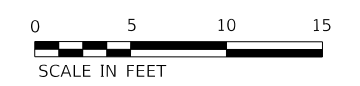
POINT	STATION	OFFSET	ELEV
A1	100+27.51	50.22' LT	(626.61)
A2	100+29.09	50.22' LT	(626.70)
A3	100+34.09	50.23' LT	(626.78)
A4	100+44.88	50.24' LT	(626.90)
B1	100+27.52	46.32' LT	(626.59)
B2	100+29.11	46.32' LT	626.65
B3	100+34.11	46.34' LT	626.72
B4	100+44.90	46.38' LT	(626.88)
C1	100+29.29	35.36' LT	(626.49)
C2	100+30.66	36.06' LT	626.48
C3	100+35.15	38.35' LT	626.56
D1	100+34.36	29.53' LT	626.38
D2	100+35.27	30.83' LT	626.37
D3	100+38.14	34.93' LT	626.47
E1	100+43.54	26.64' LT	626.23
E2	100+43.54	28.23' LT	626.65
E3	100+43.54	33.23' LT	626.73
E4	100+45.28	33.51' LT	(626.68)
F1	100+48.54	26.64' LT	(626.15)
F2	100+48.54	28.23' LT	626.57
F3	100+48.54	32.67' LT	626.63
G1	100+53.55	26.65' LT	(626.09)
G2	100+53.55	28.23' LT	(626.32)
G3	100+53.54	33.50' LT	(626.58)



ADA LEGEND

	DETECTABLE WARNING (42400800)
	DEPRESSED CURB AND GUTTER
	PROPOSED SIDE CURB
(X.XX%)	EXISTING SLOPE
(XX.XX)	EXISTING ELEVATION

EBERLY AVE AT 47TH STREET



MODEL: Default
FILE NAME: \\G:\1\projects\17166\04_CADD\CADD_Sheets\17166\F11-17166-detailed-ada-03.dgn



USER NAME = mjablonska	DESIGNED - TS	REVISED -
PLOT SCALE = 10.0000' / in.	DRAWN - TS	REVISED -
PLOT DATE = 5/30/2024	CHECKED - CLG	REVISED -
	DATE - 3/5/2024	REVISED -

**STATE OF ILLINOIS
DEPARTMENT OF TRANSPORTATION**

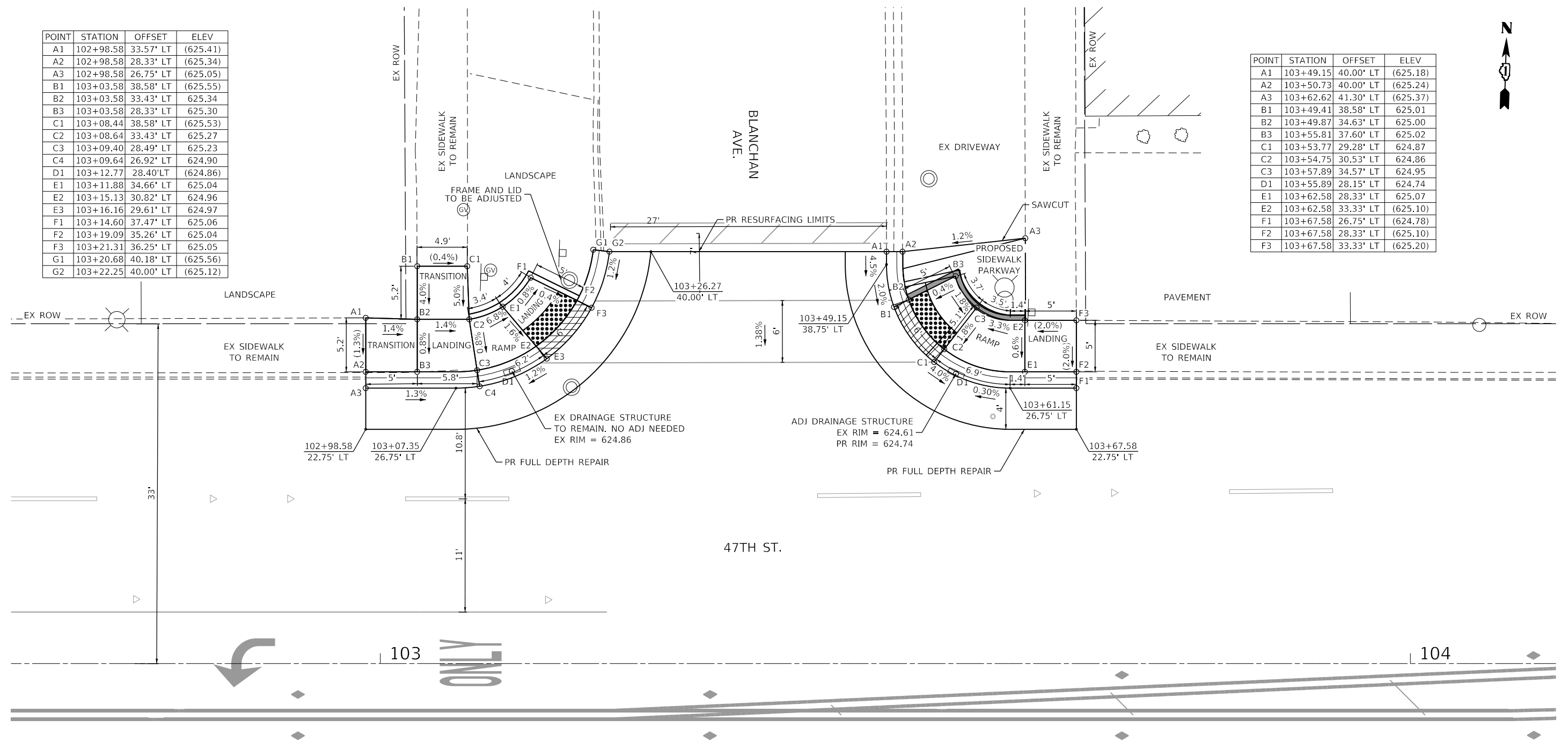
ADA RAMP DETAILS

SCALE: 1"=5' SHEET 3 OF 17 SHEETS STA. TO STA.

REVISED SHEET		ADA-03	
F.A.U. RTE.	SECTION	COUNTY	TOTAL SHEETS
2719	3212TS-RR	COOK	336
			SHEET NO. 83
CONTRACT NO. 62F11			
ILLINOIS FED. AID PROJECT			

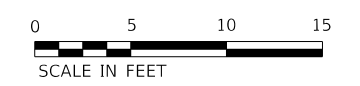
POINT	STATION	OFFSET	ELEV
A1	102+98.58	33.57' LT	(625.41)
A2	102+98.58	28.33' LT	(625.34)
A3	102+98.58	26.75' LT	(625.05)
B1	103+03.58	38.58' LT	(625.55)
B2	103+03.58	33.43' LT	625.34
B3	103+03.58	28.33' LT	625.30
C1	103+08.44	38.58' LT	(625.53)
C2	103+08.64	33.43' LT	625.27
C3	103+09.40	28.49' LT	625.23
C4	103+09.64	26.92' LT	624.90
D1	103+12.77	28.40' LT	(624.86)
E1	103+11.88	34.66' LT	625.04
E2	103+15.13	30.82' LT	624.96
E3	103+16.16	29.61' LT	624.97
F1	103+14.60	37.47' LT	625.06
F2	103+19.09	35.26' LT	625.04
F3	103+21.31	36.25' LT	625.05
G1	103+20.68	40.18' LT	(625.56)
G2	103+22.25	40.00' LT	(625.12)

POINT	STATION	OFFSET	ELEV
A1	103+49.15	40.00' LT	(625.18)
A2	103+50.73	40.00' LT	(625.24)
A3	103+62.62	41.30' LT	(625.37)
B1	103+49.41	38.58' LT	625.01
B2	103+49.87	34.63' LT	625.00
B3	103+55.81	37.60' LT	625.02
C1	103+53.77	29.28' LT	624.87
C2	103+54.75	30.53' LT	624.86
C3	103+57.89	34.57' LT	624.95
D1	103+55.89	28.15' LT	624.74
E1	103+62.58	28.33' LT	625.07
E2	103+62.58	33.33' LT	(625.10)
F1	103+67.58	26.75' LT	(624.78)
F2	103+67.58	28.33' LT	(625.10)
F3	103+67.58	33.33' LT	(625.20)



ADA LEGEND	
	DETECTABLE WARNING (42400800)
	DEPRESSED CURB AND GUTTER
	PROPOSED SIDE CURB
(X.XX%)	EXISTING SLOPE
(XX.XX)	EXISTING ELEVATION

BLANCHAN AVE AT 47TH STREET



MODEL: Default
 FILE NAME: \\0119\projects\17166\04_CADD\CADD_Sheets\17166\F11-17166-detailed-ada-04.dgn



USER NAME = mjablonowska	DESIGNED - TS	REVISED -
PLOT SCALE = 10.0000' / in.	DRAWN - TS	REVISED -
PLOT DATE = 5/30/2024	CHECKED - CLG	REVISED -
	DATE - 3/5/2024	REVISED -

STATE OF ILLINOIS
DEPARTMENT OF TRANSPORTATION

ADA RAMP DETAILS

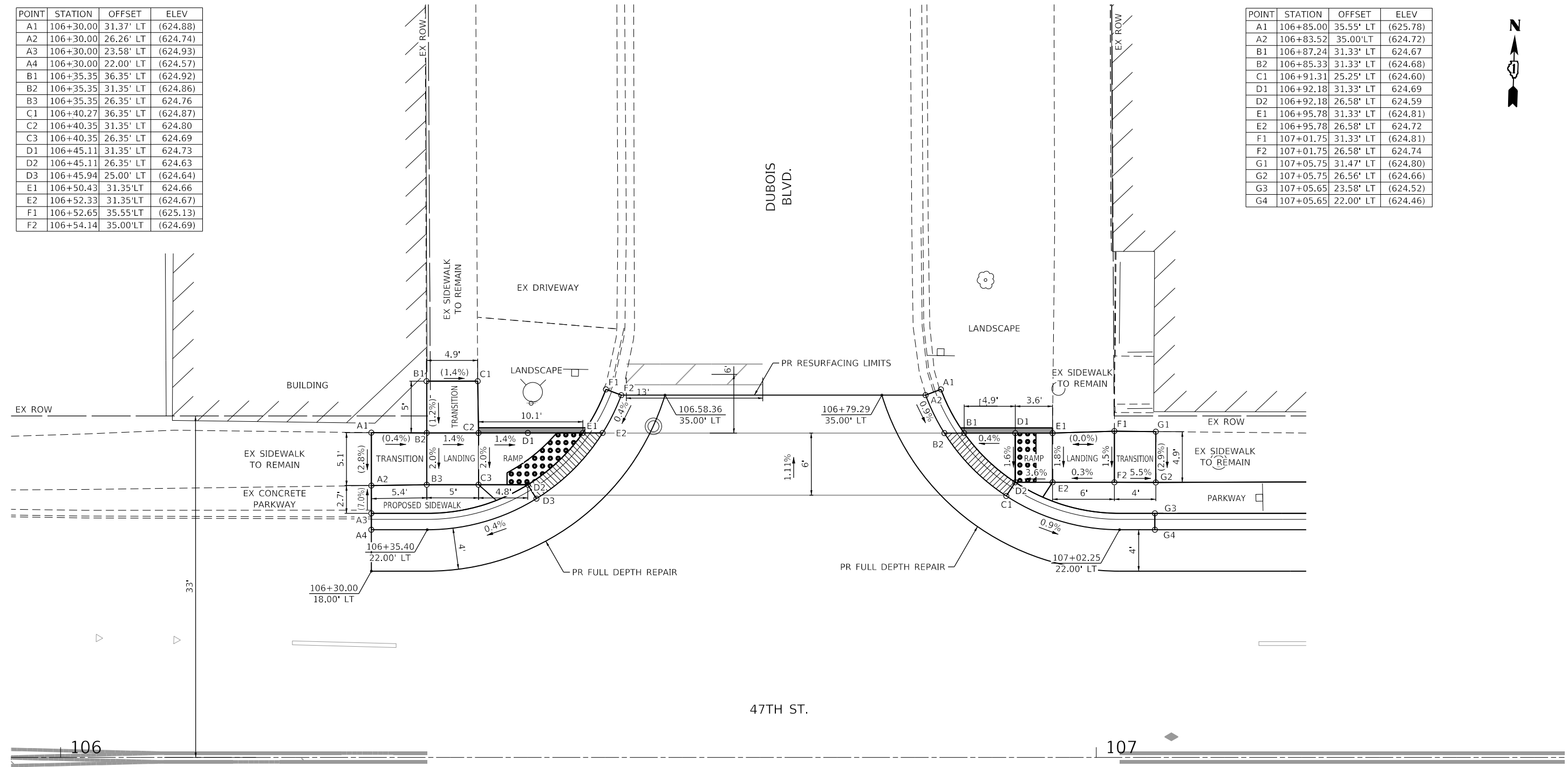
SCALE: 1"=5' SHEET 4 OF 17 SHEETS STA. TO STA.

F.A.U. RTE.	SECTION	COUNTY	TOTAL SHEETS	SHEET NO.
2719	3212TS-RR	COOK	336	84
CONTRACT NO. 62F11				
ILLINOIS FED. AID PROJECT				

REVISED SHEET ADA-04

POINT	STATION	OFFSET	ELEV
A1	106+30.00	31.37' LT	(624.88)
A2	106+30.00	26.26' LT	(624.74)
A3	106+30.00	23.58' LT	(624.93)
A4	106+30.00	22.00' LT	(624.57)
B1	106+35.35	36.35' LT	(624.92)
B2	106+35.35	31.35' LT	(624.86)
B3	106+35.35	26.35' LT	624.76
C1	106+40.27	36.35' LT	(624.87)
C2	106+40.35	31.35' LT	624.80
C3	106+40.35	26.35' LT	624.69
D1	106+45.11	31.35' LT	624.73
D2	106+45.11	26.35' LT	624.63
D3	106+45.94	25.00' LT	(624.64)
E1	106+50.43	31.35' LT	624.66
E2	106+52.33	31.35' LT	(624.67)
F1	106+52.65	35.55' LT	(625.13)
F2	106+54.14	35.00' LT	(624.69)

POINT	STATION	OFFSET	ELEV
A1	106+85.00	35.55' LT	(625.78)
A2	106+83.52	35.00' LT	(624.72)
B1	106+87.24	31.33' LT	624.67
B2	106+85.33	31.33' LT	(624.68)
C1	106+91.31	25.25' LT	(624.60)
D1	106+92.18	31.33' LT	624.69
D2	106+92.18	26.58' LT	624.59
E1	106+95.78	31.33' LT	(624.81)
E2	106+95.78	26.58' LT	624.72
F1	107+01.75	31.33' LT	(624.81)
F2	107+01.75	26.58' LT	624.74
G1	107+05.75	31.47' LT	(624.80)
G2	107+05.75	26.56' LT	(624.66)
G3	107+05.65	23.58' LT	(624.52)
G4	107+05.65	22.00' LT	(624.46)



ADA LEGEND

- DETECTABLE WARNING (42400800)
- DEPRESSED CURB AND GUTTER
- PROPOSED SIDE CURB
- (X.XX%) EXISTING SLOPE
- (XX.XX) EXISTING ELEVATION

DUBOIS AVE AT 47TH STREET



MODEL: D:\draft\106119\project\17168\04_CADD\CADD_Sheets\11-shc-detaill-ada-005.dgn



USER NAME = mjablonska	DESIGNED - TS	REVISED -
PLOT SCALE = 10.0000 ' / in.	DRAWN - TS	REVISED -
PLOT DATE = 5/30/2024	CHECKED - CLG	REVISED -
	DATE - 3/5/2024	REVISED -

STATE OF ILLINOIS
DEPARTMENT OF TRANSPORTATION

ADA RAMP DETAILS

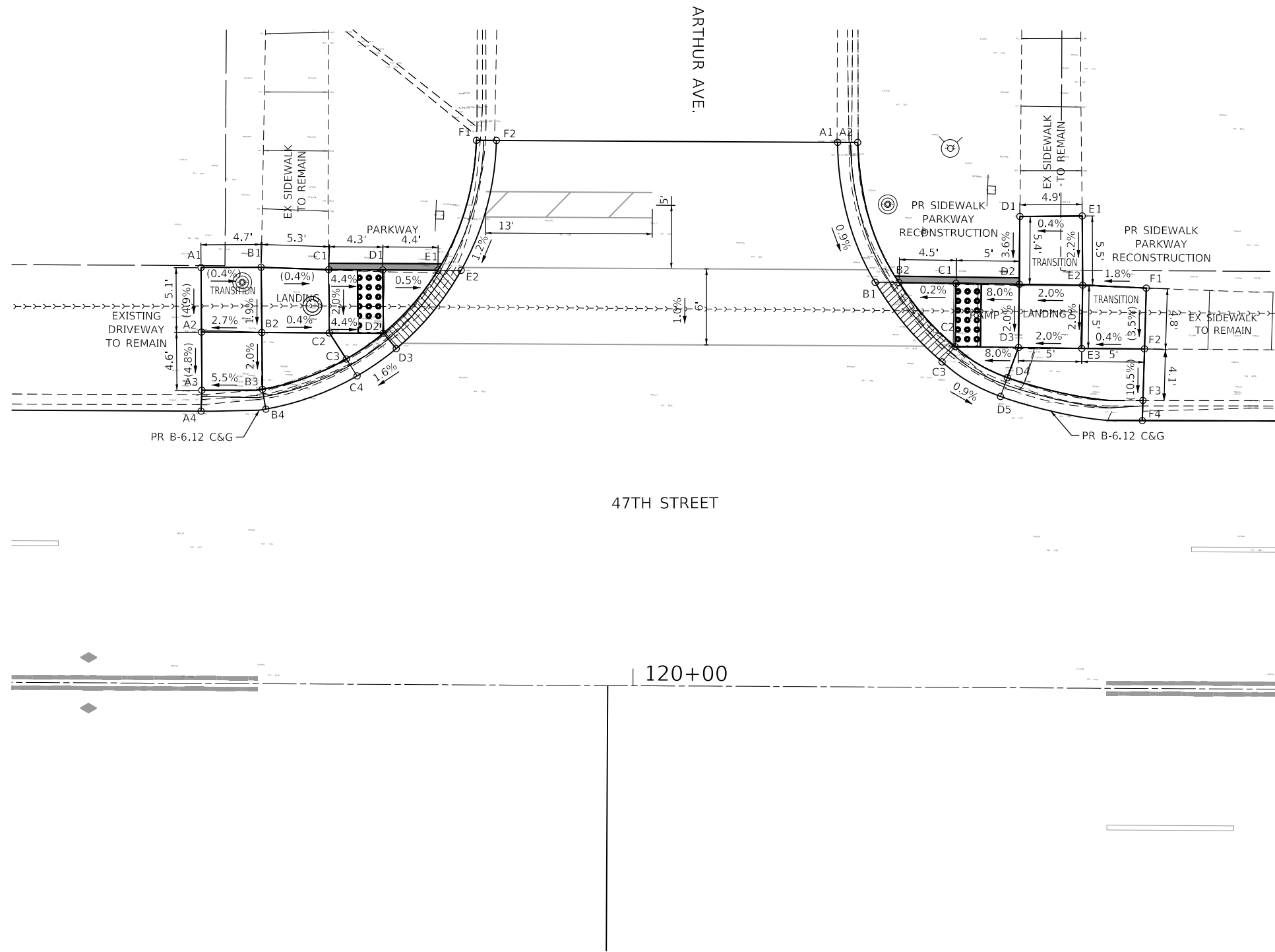
SCALE: 1"=5' SHEET 5 OF 17 SHEETS STA. TO STA.

REVISED SHEET ADA-05

F.A.U. RTE.	SECTION	COUNTY	TOTAL SHEETS	SHEET NO.
2719	3212TS-RR	COOK	336	85
CONTRACT NO. 62F11				
ILLINOIS FED. AID PROJECT				

POINT	STATION	OFFSET	ELEV
A1	119+65.70	32.84' LT	(622.92)
A2	119+65.76	27.74' LT	(622.67)
A3	119+65.82	23.15' LT	(622.45)
A4	119+65.77	21.50' LT	(622.36)
B1	119+70.45	32.89' LT	(622.90)
B2	119+70.53	27.74' LT	622.80
B3	119+70.60	23.24' LT	622.71
B4	119+70.88	21.69' LT	(622.45)
C1	119+75.79	32.73' LT	(622.88)
C2	119+75.87	27.73' LT	622.78
C3	119+77.21	25.67' LT	622.70
C4	119+78.08	24.35' LT	(622.50)
D1	119+80.06	32.73' LT	622.69
D2	119+80.14	27.73' LT	622.59
D3	119+81.16	26.52' LT	622.56
E1	119+84.42	32.73' LT	(622.67)
E2	119+86.25	32.73' LT	(622.64)
F1	119+87.40	42.98' LT	(622.83)
F2	119+88.98	43.00' LT	(622.82)

POINT	STATION	OFFSET	ELEV
A1	120+15.93	43.00' LT	(622.75)
A2	120+17.51	43.00' LT	(622.93)
B1	120+18.95	31.96' LT	(622.61)
B2	120+20.84	31.95' LT	622.62
C1	120+25.34	31.91' LT	622.63
C2	120+25.30	26.91' LT	622.53
C3	120+24.27	25.70' LT	(622.52)
D1	120+30.36	37.22' LT	(623.23)
D2	120+30.34	31.87' LT	623.03
D3	120+30.30	26.87' LT	622.93
D4	120+29.44	24.49' LT	622.82
D5	120+28.90	23.00' LT	(622.45)
E1	120+35.28	37.29' LT	(623.25)
E2	120+35.28	37.29' LT	623.13
E3	120+35.30	26.82' LT	623.03
F1	120+40.37	31.62' LT	(623.22)
F2	120+40.25	26.82' LT	(623.05)
F3	120+40.15	22.75' LT	(622.62)
F4	120+40.12	21.15' LT	(622.39)



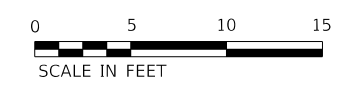
47TH STREET

120+00

ARTHUR AVE AT 47TH STREET

ADA LEGEND

- DETECTABLE WARNING (42400800)
- DEPRESSED CURB AND GUTTER
- PROPOSED SIDE CURB
- (X.XX%) EXISTING SLOPE
- (XX.XX) EXISTING ELEVATION



REVISED SHEET ADA-17

MODEL: Default; FILE NAME: \\G:\19\projects\17166\04_CADD\CADD_Sheets\17166\F11-17166-04-01.dgn



USER NAME = mjablonska
 PLOT SCALE = 10.0000' / in.
 PLOT DATE = 5/30/2024

DESIGNED - TS
 DRAWN - TS
 CHECKED - CLG
 DATE - 3/5/2024

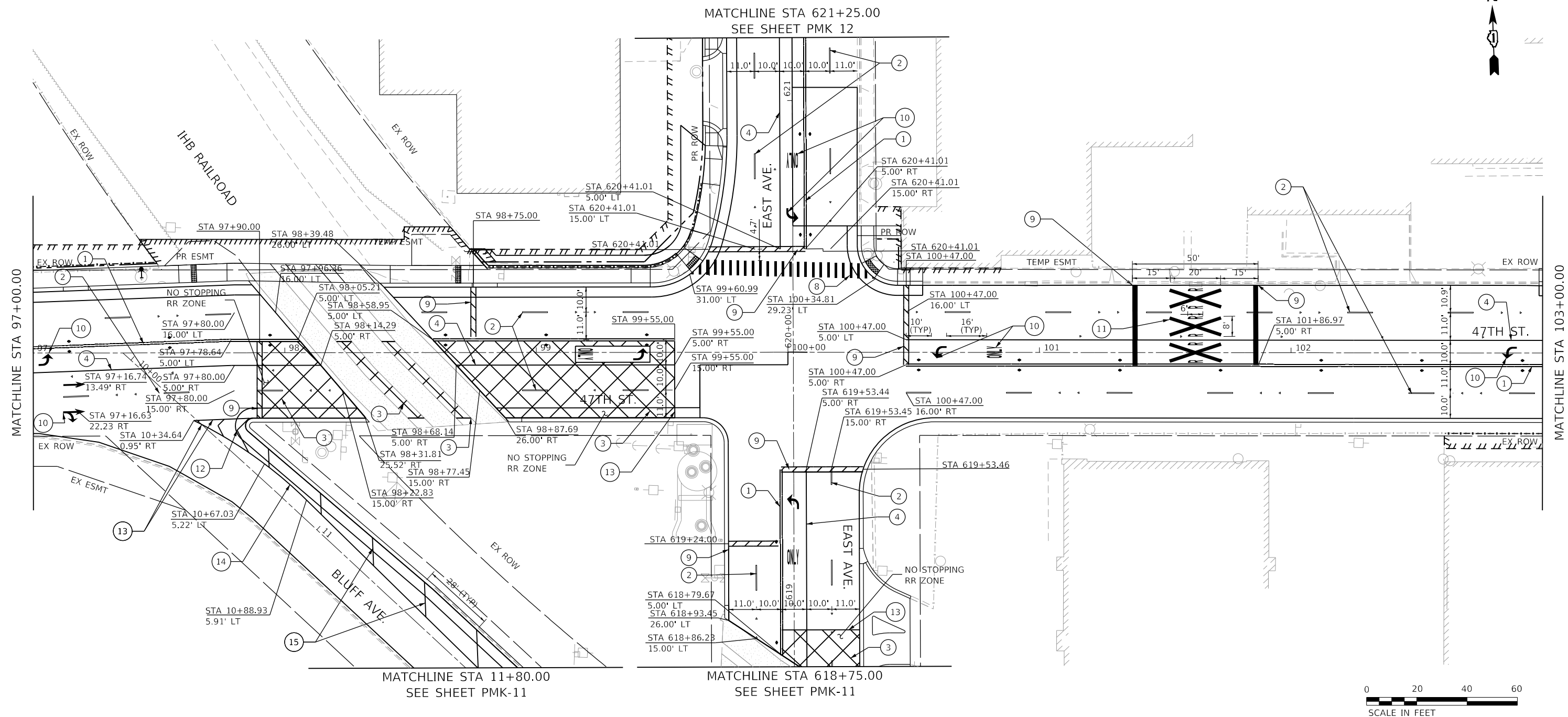
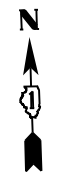
REVISED -
 REVISED -
 REVISED -
 REVISED -

STATE OF ILLINOIS
 DEPARTMENT OF TRANSPORTATION

ADA RAMP DETAILS

SCALE: 1"=5' SHEET 17 OF 17 SHEETS STA. TO STA.

F.A.U. RTE.	SECTION	COUNTY	TOTAL SHEETS	SHEET NO.
2719	3212TS-RR	COOK	336	97
CONTRACT NO. 62F11				
ILLINOIS FED. AID PROJECT				



LEGEND

- ① THERMOPLASTIC PAVEMENT MARKING - LINE 4" DOUBLE YELLOW CENTERLINE @ 11" C-C
- ② THERMOPLASTIC PAVEMENT MARKING - LINE 4" WHITE SKIP DASH LINE (10' DASH, 30' SKIP)
- ③ THERMOPLASTIC PAVEMENT MARKING - LINE 6" WHITE RR CROSSING AREA @ 45° AND 8' C-C
- ④ THERMOPLASTIC PAVEMENT MARKING - LINE 6" WHITE SOLID LINE
- ⑤ THERMOPLASTIC PAVEMENT MARKING - LINE 6" WHITE DOTTED LINE EXTENSION (2' DASH, 6' SKIP)
- ⑥ NOT USED
- ⑦ THERMOPLASTIC PAVEMENT MARKING - LINE 12" YELLOW DIAGONAL LINE @ 45° AND 75' C-C (OR MIN. 5 LINES)
- ⑧ THERMOPLASTIC PAVEMENT MARKING - LINE 12" WHITE CROSSWALK LINE
- ⑨ THERMOPLASTIC PAVEMENT MARKING - LINE 24" WHITE STOP BAR
- ⑩ THERMOPLASTIC PAVEMENT MARKING - LETTERS AND SYMBOLS (WHITE)
- ⑪ THERMOPLASTIC PAVEMENT MARKING - LETTERS AND SYMBOLS @ RR CROSSING (WHITE)
- ⑫ THERMOPLASTIC PAVEMENT MARKING - LINE 12" WHITE CHEVRON
- ⑬ THERMOPLASTIC PAVEMENT MARKING - LINE 8" WHITE SOLID LINE
- ⑭ THERMOPLASTIC PAVEMENT MARKING - LINE 4" YELLOW SOLID LINE
- ⑮ THERMOPLASTIC PAVEMENT MARKING - LINE 12" YELLOW SOLID DIAGONALS
- ⑯ THERMOPLASTIC PAVEMENT MARKING - LINE 4" WHITE SOLID LINE
- TWO-WAY AMBER MARKER
- ONE-WAY CRYSTAL MARKER (W/O)

NOTE: ALL PAVEMENT MARKINGS INSTALLED ACCORDING TO IDOT DISTRICT 1 DETAILS TC-13 & TC-23
ALL RAISED REFLECTIVE PAVEMENT MARKERS INSTALLED ACCORDING TO IDOT DISTRICT 1 DETAIL TC-11

REVISED SHEET

MODEL: D:\62111\sh-sch\mk-004.dgn
FILE NAME: 20240311\20240311-47th Street at East Avenue\CAD\CAD_Sheets\11-24-24\sh-sch-pmk-004.dgn



USER NAME = SchaeffN	DESIGNED - NWS	REVISED -
PLOT SCALE = 40.0000' / in.	DRAWN - DVP	REVISED -
PLOT DATE = 5/29/2024	CHECKED - ALM	REVISED -
	DATE - 3/5/2024	REVISED -

**STATE OF ILLINOIS
DEPARTMENT OF TRANSPORTATION**

**EAST AVENUE AT 47TH STREET
PAVEMENT MARKING PLANS**

SCALE: 1' = 20' SHEET 3 OF 13 SHEETS STA. 97+00.00 TO STA. 103+00.00

F.A.U. RTE.	SECTION	COUNTY	TOTAL SHEETS	SHEET NO.
2719	3212TS-RR	COOK	336	191
CONTRACT NO. 62F11				
ILLINOIS		FED. AID PROJECT		

PMK-03

