

Drawing file: W:\Projects\by\_Village\Vehicle Park\00022004 - 9th Ave Resurfacing (LAW) Ph. 1 & R\00022004.dwg  
 May 16, 2024 - 8:53am

SUMMARY OF QUANTITIES					Const. Type Code
					80% Federal/20% Local
SPLTY	Code No.	Description	Unit	Total Quantity	Resurfacing 005 Urban
	X6020399	CONNECTION TO EXISTING MANHOLE	EACH	2	2
	X6030310	FRAMES AND LIDS TO BE ADJUSTED (SPECIAL)	EACH	15	15
*	X8760200	ACCESSIBLE PEDESTRIAN SIGNALS	EACH	8	8
*	X8780012	CONCRETE FOUNDATION, TYPE A 12-INCH DIA.	FOOT	12	12
*	X8860105	DETECTOR LOOP REPLACEMENT	FOOT	405	405
	XX005770	STRUCTURE TO BE ABANDONED	EACH	1	1
	XX006448	PVC COMBINED SEWER PIPE REPLACEMENT, 10"	FOOT	20	20
	XX009633	STORM SEWER, PVC PIPE, TYPE 1 10"	FOOT	25	25
	Z0030850	TEMPORARY INFORMATION SIGNING	SQ FT	51	51
*	Z0033044	RE OPTIMIZE TRAFFIC SIGNAL SYSTEM LEVEL 1	EACH	1	1


**HANCOCK ENGINEERING**  
 100 YEARS OF  
 Experience  
 ♦ Civil Engineers  
 ♦ Municipal Consultants  
 ♦ Established 1911  
 7733 Roosevelt Road  
 Westchester, IL 61154-2780  
 Phone: 708-644-0300  
 www.hancock.com

DESIGNED - ELS	REVISED - 3-12-24
DRAWN - SFB, DMM, GD	REVISED - 4-3-24
CHECKED - XX	REVISED - 4-7-24
DATE - 11-15-23	REVISED - 5-16-24

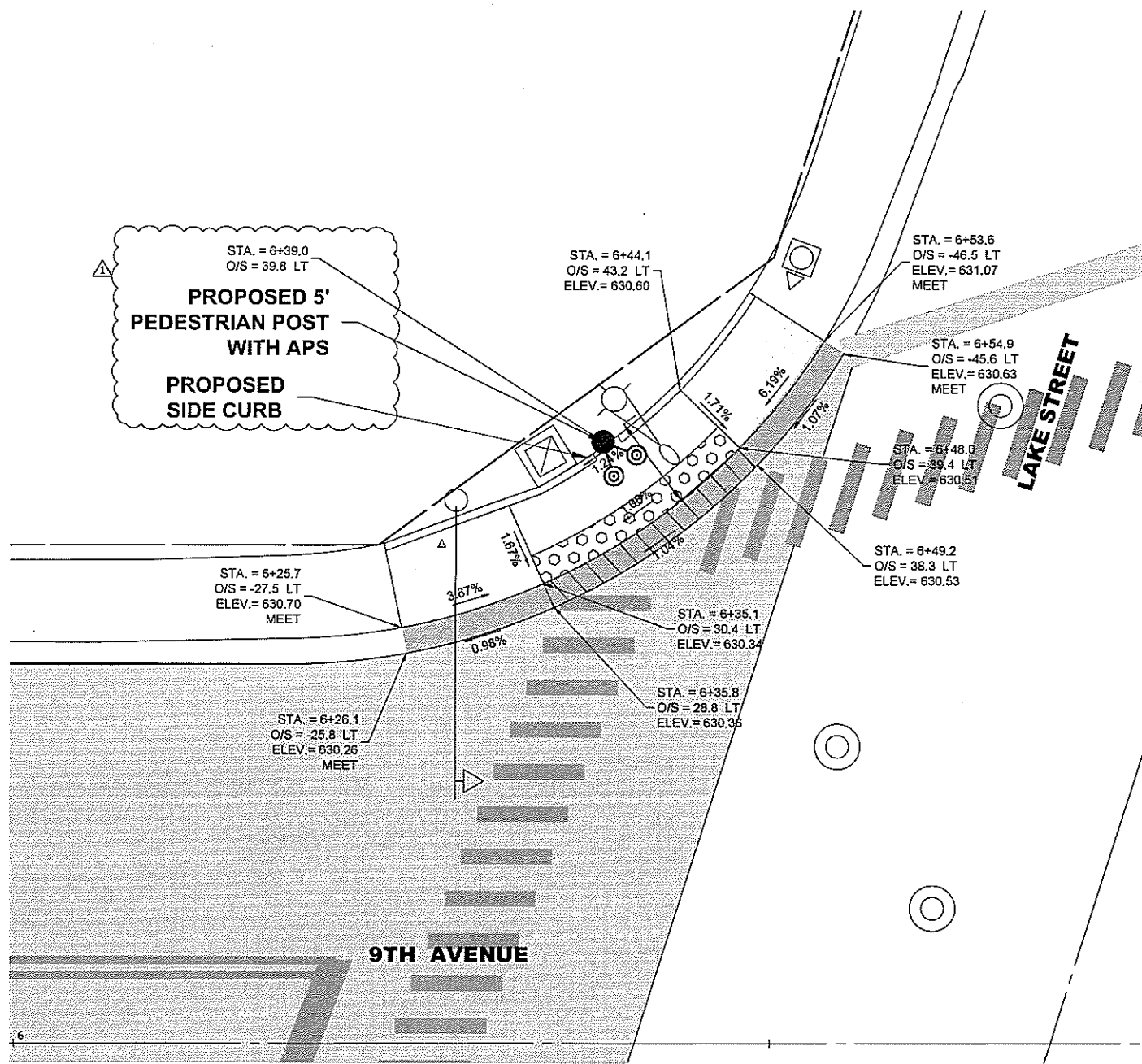
**STATE OF ILLINOIS**  
**DEPARTMENT OF TRANSPORTATION**

SCALE: NONE		SHEET NO. 5 OF 5 SHEETS		STA. -	TO STA. -
-------------	--	-------------------------	--	--------	-----------

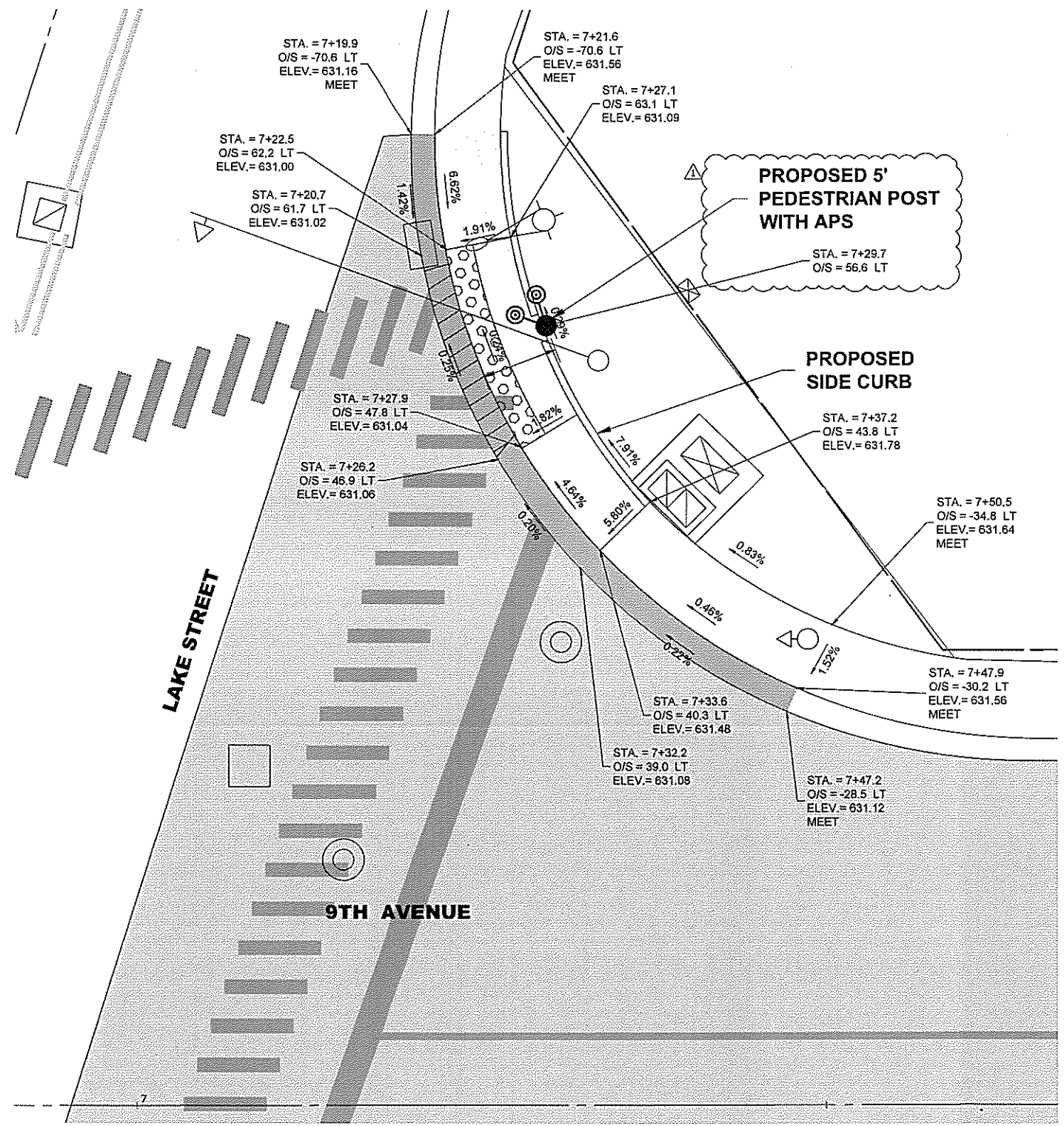
△ REVISED SHEET 5/16/24

F.A.U. RTE.	SECTION	COUNTY	TOTAL SHEETS	SHEET NO.
2733	23-00144-00-RS	COOK	36	9
FED. ROAD DIST. NO. 1   ILLINOIS			CONTRACT NO. 61K40	
			FED. AID PROJECT	
E.H.E. PROJECT NO. 600-23-08401				

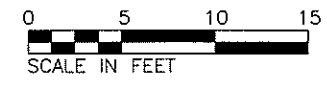
NOTE:  
SIDEWALK SIDE CURB SHALL BE CUT SUCH  
THAT THE PEDESTRIAN SIGNAL POST IS FLUSH  
WITH THE EDGE OF THE SIDEWALK



NOTE:  
SIDEWALK SIDE CURB SHALL BE CUT SUCH  
THAT THE PEDESTRIAN SIGNAL POST IS FLUSH  
WITH THE EDGE OF THE SIDEWALK



**LEGEND**  
(XX.XX) EXISTING LENGTH  
(%) PROPOSED ELEVATIONS/ SLOPE



REVISD SHEET 5/16/24

**HANCOCK ENGINEERING**  
Civil Engineers  
Municipal Consultants  
Established 1911  
9733 Roosevelt Road  
Wheaton, IL 60154-2780  
Phone: 708-665-0300  
www.hancock.com

DESIGNED - ELS	REVISED - 3-12-24
DRAWN - SFB, DMM, GD	REVISED - 4-3-24
CHECKED - XX	REVISED - 4-7-24
DATE - 11-15-23	REVISED - 5-16-24

**STATE OF ILLINOIS  
DEPARTMENT OF TRANSPORTATION**

**ADA DESIGN DETAILS  
9TH AVENUE AT LAKE STREET SW & NW**

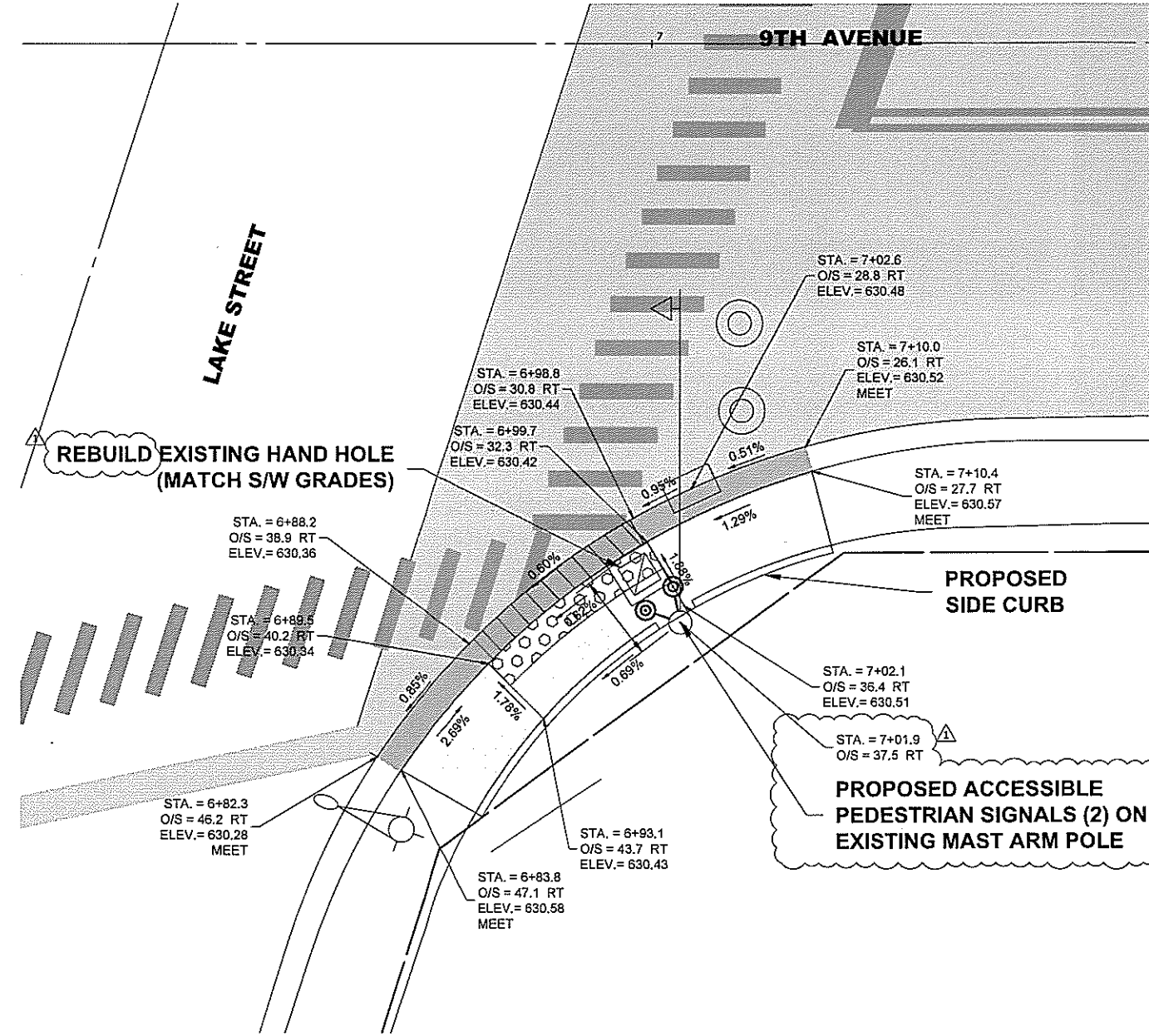
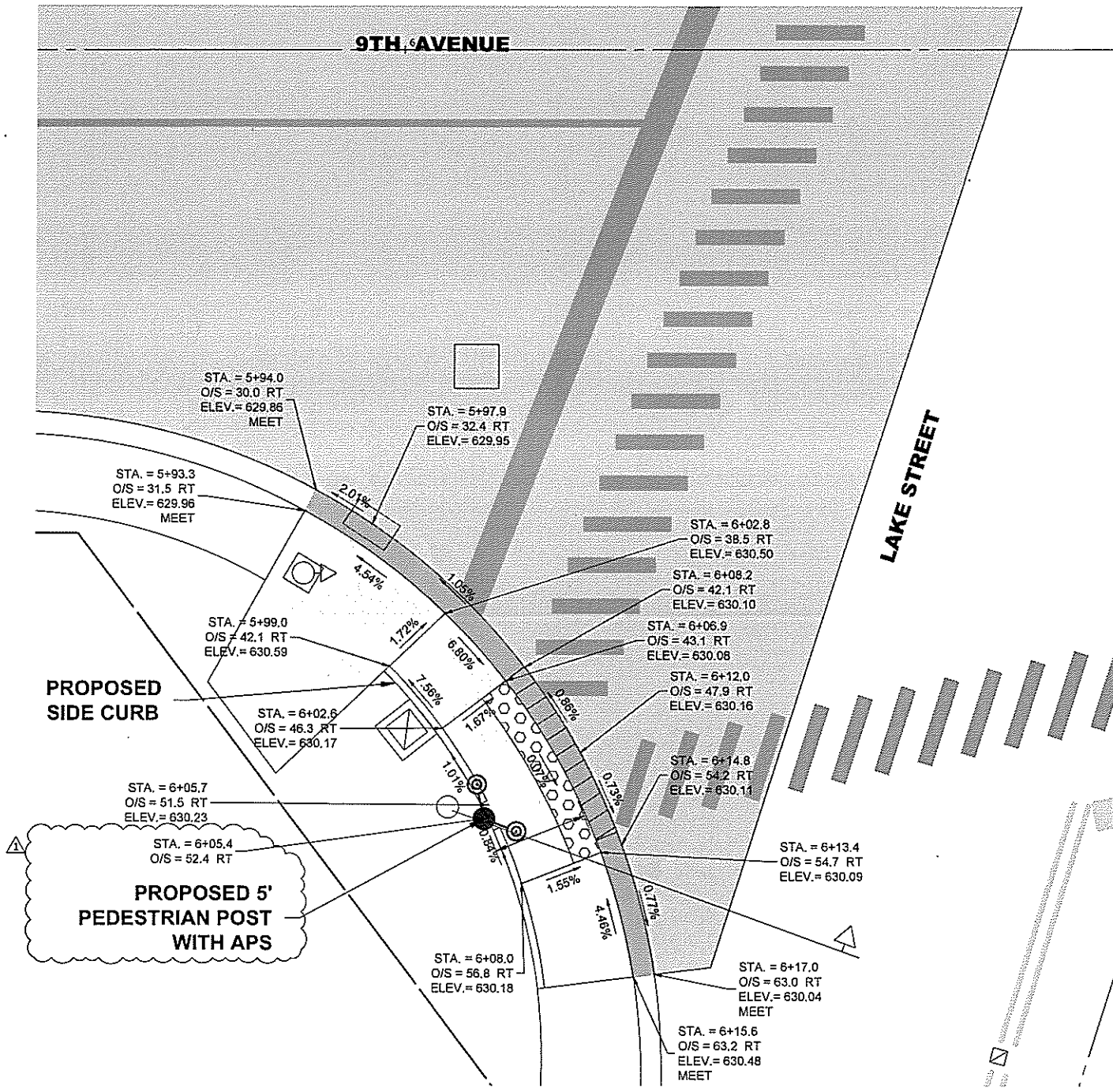
SCALE: 1" = 5' SHEET NO. 1 OF 1 SHEETS STA. - TO STA. -

F.A.U. RTE.	SECTION	COUNTY	TOTAL SHEETS	SHEET NO.
2733	23-00144-00-RS	COOK	38	19
FED. ROAD DIST. NO. 1   ILLINOIS			CONTRACT NO. 61K40	
FED. AID PROJECT			E.H.E. PROJECT NO. 600-23-08401	

NOTE:  
SIDEWALK SIDE CURB SHALL BE CUT SUCH  
THAT THE PEDESTRIAN SIGNAL POST IS FLUSH  
WITH THE EDGE OF THE SIDEWALK



NOTE:  
SIDEWALK SIDE CURB SHALL BE CUT SUCH  
THAT THE PEDESTRIAN SIGNAL POST IS FLUSH  
WITH THE EDGE OF THE SIDEWALK



**LEGEND**  
(XX.XX) EXISTING LENGTH  
(%) PROPOSED ELEVATIONS/ SLOPE



REVISD SHEET 5/16/24

Drawing file: W:\Projects\_by\_Village\Wetras Park\0023084 - 9th Ave Resurfacing (LAFD) Ph 1 & ADA Details\9thLn\_S11\_scale.dwg May 21, 2024 - 2:52pm

**HANCOCK ENGINEERING**  
Civil Engineers  
Municipal Consultants  
Established 1911

9933 Roosevelt Road  
Waukegan, IL 60154-2780  
Phone: 708-843-0300  
www.hancock.com

DESIGNED - ELS	REVISED - 3-12-24
DRAWN - SFB, DMM, GD	REVISED - 4-3-24
CHECKED - XX	REVISED - 4-7-24
DATE - 11-15-23	REVISED - 5-16-24

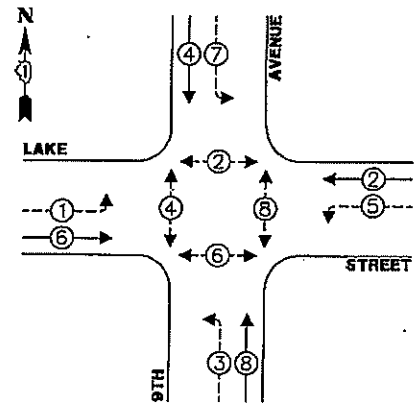
**STATE OF ILLINOIS  
DEPARTMENT OF TRANSPORTATION**

**ADA DESIGN DETAILS  
9TH AVENUE AT LAKE STREET SE & NE**

SCALE: 1" = 5' SHEET NO. 1 OF 1 SHEETS STA. - TO STA. -

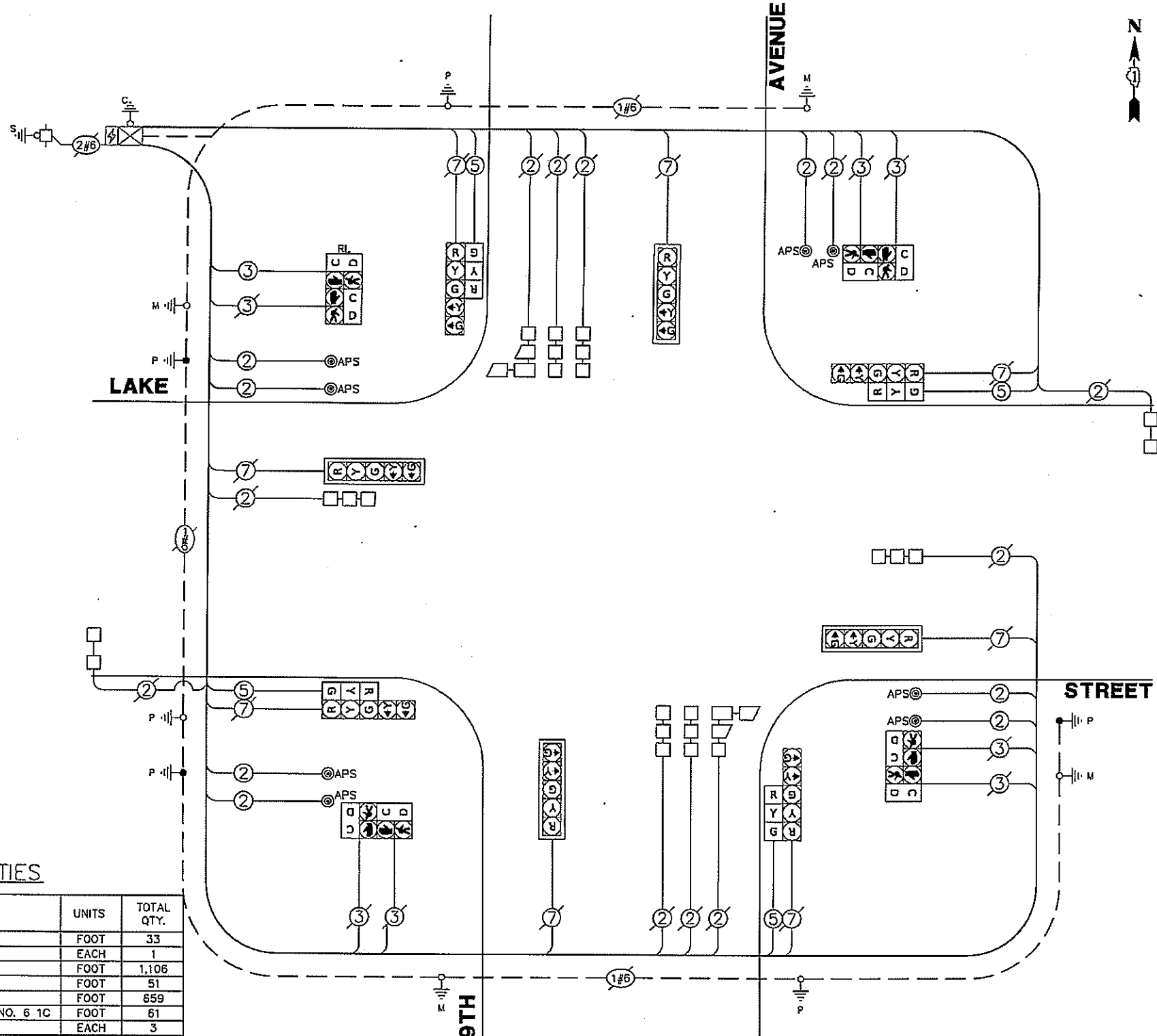
F.A.U. RTE.	SECTION	COUNTY	TOTAL SHEETS	SHEET NO.
2733	23-00144-00-RS	COOK	38	20
FED. ROAD DIST. NO. 1 ILLINOIS			CONTRACT NO. 61K40	
E.H.E. PROJECT NO. 600-23-08401				

**PROPOSED CONTROLLER SEQUENCE**



**LEGEND:**

- ← ⊙ → PROTECTED PHASE
- ← ⊙ ⊙ → PROTECTED/PERMITTED PHASE
- ← ⊙ ⊙ ⊙ → PEDESTRIAN PHASE
- ← ⊙ ⊙ ⊙ ⊙ → OVERLAP



**TRAFFIC SIGNAL ELECTRICAL SERVICE REQUIREMENTS**

TYPE	QUANTITY	UNIT WATTAGE	TOTAL WATTAGE
SIGNAL HEAD 3-SECTION	4	11	44
4-SECTION	-	14	-
5-SECTION	8	13	104
PROGRAMMABLE SIGNAL 3-SECTION	-	22	-
4-SECTION	-	32	-
5-SECTION	-	28	-
PEDESTRIAN SIGNAL CONTROLLER	1	150	150
MASTER CONTROLLER	-	100	-
UPS	1	25	25
DETECTION RADAR	-	20	-
VIDEO	-	20	-
BLANK-OUT SIGN	-	25	-
NETWORK SWITCH (I OR II)	-	35	-
CELLULAR MODEM	-	15	-
TOTAL FOR UPS =			443
UPS CHARGING	1	225	225
BATTERY HEATER MAT	1	180	180
CABINET HEATER	1	200	200
FLASHER	-	15	-
LED STREET NAME SIGN	-	120	-
LUMINAIRE	-	240	-
TOTAL FOR SERVICE =			1,048

**SCHEDULE OF QUANTITIES**

ITEM DESCRIPTION	UNITS	TOTAL QTY.
UNDERGROUND CONDUIT, GALVANIZED STEEL, 2" DIA.	FOOT	33
MAINTENANCE OF EXISTING TRAFFIC SIGNAL INSTALLATION	EACH	1
ELECTRIC CABLE IN CONDUIT, SIGNAL NO. 14 2C	FOOT	1,106
ELECTRIC CABLE IN CONDUIT, SIGNAL NO. 14 3C	FOOT	51
ELECTRIC CABLE IN CONDUIT, SIGNAL NO. 14 5C	FOOT	659
ELECTRIC CABLE IN CONDUIT, EQUIPMENT GROUNDING CONDUCTOR, NO. 6 1C	FOOT	61
DRILL EXISTING HANDHOLE	EACH	3
SIGNAL HEAD, LED, 1-FACE, 3-SECTION, BRACKET MOUNTED	EACH	4
DETECTOR LOOP, TYPE I	FOOT	895
RELOCATE EXISTING PEDESTRIAN SIGNAL HEAD	FOOT	1
REMOVE EXISTING TRAFFIC SIGNAL EQUIPMENT	EACH	1
ROD AND CLEAN EXISTING CONDUIT	FOOT	50
REMOVE ELECTRIC CABLE FROM CONDUIT	FOOT	573
PEDESTRIAN SIGNAL POST, 5 FT.	SQ FT	3
ACCESSIBLE PEDESTRIAN SIGNALS	EACH	8
CONCRETE FOUNDATION, TYPE A, 12-INCH DIAMETER	FOOT	12
RE-OPTIMIZE TRAFFIC SIGNAL SYSTEM LEVEL 1	EACH	1

**CABLE PLAN (NOT TO SCALE)**

ENERGY COSTS TO:  
**VILLAGE OF MAYWOOD**  
 40 MADISON STREET  
 MAYWOOD, IL 60153  
 ENERGY SUPPLY: CONTACT: Erica Irby  
 PHONE: (779) 231-0633  
 COMPANY: COM-ED  
 ACCOUNT NUMBER: 19071-13063

REVISSED SHEET 5/16/2024 **TS 14220**

625 Forest Ridge Drive  
 Vernon Hills, IL 60061  
**GEHAWAT HAMILTON ASSOCIATES, INC.**  
 P.O. Box 831180  
 Chicago, IL 60683

FILE NAME = 5419.100-TR.dwg	USER NAME = ZACH WALLSTEN	DESIGNED - RJH	REVISED - 5/16/2024
PLOT SCALE = 1" = .0833'		DRAWN - ZCW	REVISED -
PLOT DATE = 12/4/2023		CHECKED - RJH	REVISED -
		DATE - 12.04.2023	REVISED -

STATE OF ILLINOIS  
 DEPARTMENT OF TRANSPORTATION

CABLE PLAN, PHASE DESIGNATION DIAGRAM, AND EMERGENCY VEHICLE PREEMPTION SEQUENCE		FALL RTE	SECTION	COUNTY	TOTAL SHEETS	SHEET NO.
9TH AVENUE AND LAKE STREET		2733	23-00144-00-RS	COOK	38	37
SCALE NONE		SHEET NO. 2 OF 2 SHEETS		STA.	TO STA.	
		ILLINOIS FED. AID PROJECT		CONTRACT# 61K40		