

STATE OF ILLINOIS  
DEPARTMENT OF TRANSPORTATION

F.A.P. RTE.	SECTION	COUNTY	TOTAL SHEETS	SHEET NO.
681	(115,116)PP	FORD	9	1
		ILLINOIS	CONTRACT NO. 66P12	

**INDEX OF SHEETS**

1. COVER SHEET
2. GENERAL NOTES
3. SUMMARY OF QUANTITIES
4. TYPICAL SECTIONS
- 5-6. SCHEDULES
- 7-8. CLASS B PATCHING DETAILS
9. TEMPORARY INFORMATION SIGNING

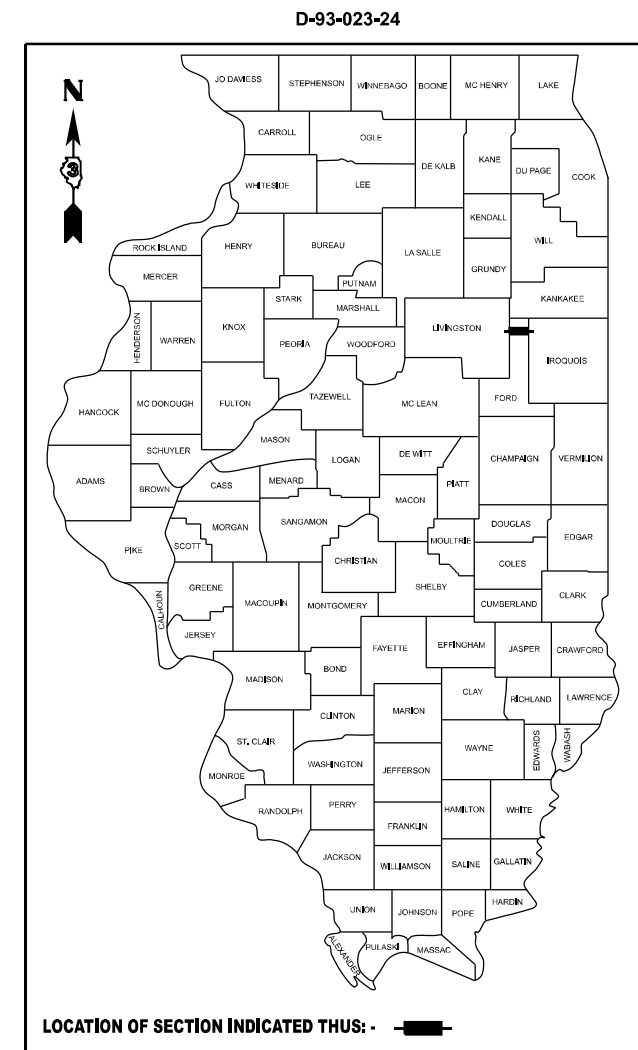
**HIGHWAY STANDARDS**

000001-08	STANDARD SYMBOLS, ABBREVIATIONS AND PATTERNS
001001-02	AREAS OF REINFORCEMENT BARS
001006	DECIMAL OF AN INCH AND OF A FOOT
701001-02	OFF-ROAD OPERATIONS 2L, 2W, MORE THAN 15' AWAY
701006-05	OFF-ROAD OPERATIONS 2L, 2W, 15' TO 24" FROM PAVEMENT EDGE
701301-04	LANE CLOSURE, 2L, 2W, SHORT TIME OPERATIONS
701336-07	LANE CLOSURE, 2L, 2W, WORK AREAS IN SERIES, FOR SPEEDS ≥ 45 MPH
701901-09	TRAFFIC CONTROL DEVICES

**PROPOSED  
HIGHWAY PLANS**

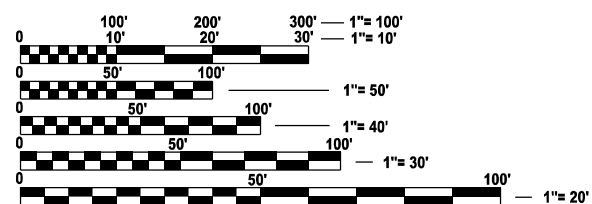
**F.A.P. ROUTE 681 (IL 116)  
SECTION (115, 116)PP  
CLASS B PAVEMENT PATCHING  
FORD COUNTY**

C-93-056-24



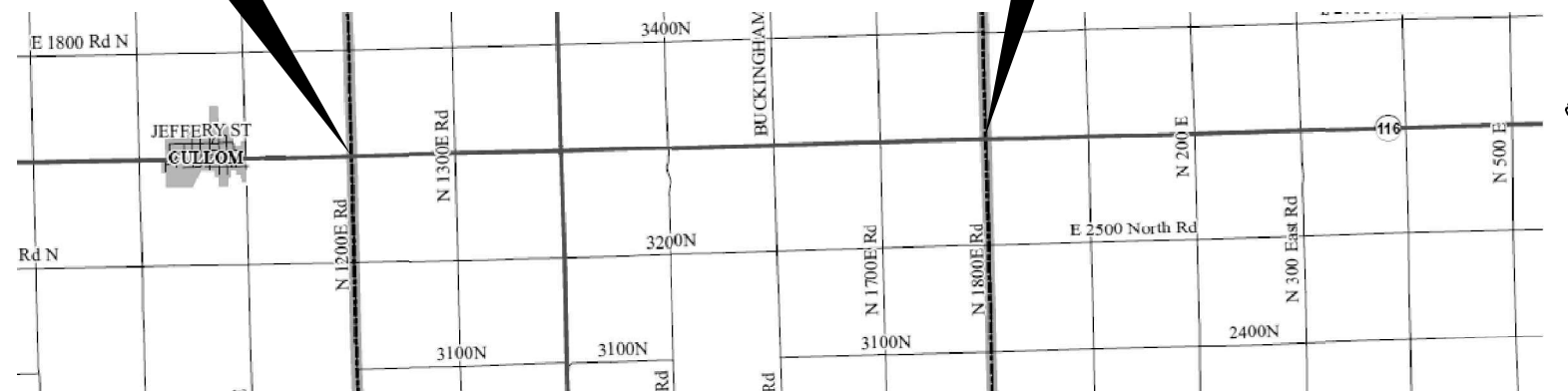
**END IMPROVEMENT**  
**LIVINGSTON/FORD COUNTY LINE**  
**N 1200 E RD.**  
**LOG MILE 6.00**

**BEGIN IMPROVEMENT**  
**FORD/IROQUOIS COUNTY LINE**  
**N 1800 E RD.**  
**LOG MILE 0.00**



FULL SIZE PLANS HAVE BEEN PREPARED USING STANDARD ENGINEERING SCALES. REDUCED SIZED PLANS WILL NOT CONFORM TO STANDARD SCALES. IN MAKING MEASUREMENTS ON REDUCED PLANS, THE ABOVE SCALES MAY BE USED.

J.U.L.I.E.  
JOINT UTILITY LOCATION INFORMATION FOR EXCAVATION  
1-800-892-0123  
OR 811



GROSS LENGTH = 31,680.0 FT. = 6.0 MILE  
NET LENGTH = 736 FT. = 0.14 MILE

**PROJECT ENGINEER YOGESH PATEL P.E.**  
**UNIT CHIEF RON WOODSHANK**  
**DISTRICT 3 (815) 434-6131**  
**CONTRACT NO. 66P12**

**FUNCTIONAL CLASSIFICATION**  
**RURAL OTHER PRINCIPLE ARTERIAL**  
**F.A.P. ROUTE 681 (IL 116)**  
**2021 ADT = 800**  
**P.V. 76.3 % S.U. 6.2 % M.U. 17.5 %**

STATE OF ILLINOIS  
DEPARTMENT OF TRANSPORTATION  
SUBMITTED March 26, 2024  
*Trisha Thompson* REGIONAL ENGINEER  
May 10, 2024 *Scott A. Elk* ENGINEER OF DESIGN AND ENVIRONMENT  
May 10, 2024 *Stephen McSwain* DIRECTOR OF HIGHWAYS PROJECT IMPLEMENTATION

**PRINTED BY THE AUTHORITY  
OF THE STATE OF ILLINOIS**

**GENERAL NOTES**

ALL EXCAVATED MATERIAL, WHICH INCLUDES DIGGING OR GRADING OF ANY SOIL OR FILL MATERIAL, WITH THE EXCEPTION OF AGGREGATE FILLS, MUST BE INCORPORATED WITHIN THE IDOT RIGHT OF WAY.

**COMMITMENTS**

NONE

**STATE OF ILLINOIS  
DEPARTMENT OF TRANSPORTATION  
DISTRICT THREE  
AS BUILT INFORMATION**

\_\_\_\_\_  
**SUPERVISING CONSTRUCTION FIELD ENGINEER**

\_\_\_\_\_  
**RESIDENT ENGINEER / TECHNICIAN**

**START & END DATES  
OF CONSTRUCTION:**

**INSPECTORS:**

MODEL: Default  
FILE NAME: c:\pwwork\woodshank\100965724\66P12.dgn

USER NAME = ronald.woodshank	DESIGNED - RW	REVISED -
	DRAWN - RW	REVISED -
PLOT SCALE = \$\$CALE\$	CHECKED - YP	REVISED -
PLOT DATE = 1/17/2024	DATE - 1/13/2024	REVISED -

**STATE OF ILLINOIS  
DEPARTMENT OF TRANSPORTATION**

**GENERAL NOTES**

SCALE: SHEET 1 OF 1 SHEETS STA. TO STA.

F.A.P. RTE.	SECTION	COUNTY	TOTAL SHEETS	SHEET NO.
681	(115,116)PP	FORD	9	2
			CONTRACT NO. 66P12	
		ILLINOIS	FED. AID PROJECT	

CODE NO.	ITEM	UNIT	TOTAL QUANTITY	CONSTRUCTION CODE	
				CONTRACT MAINTENANCE	
				100% STATE	
				ROADWAY	
				0006	
				RURAL	
44200050	WELDED WIRE REINFORCEMENT	SQ YD	69		69
44201053	CLASS B PATCHES, TYPE IV, 17 INCH	SQ YD	52		52
44201055	CLASS B PATCHES, TYPE II, 17 INCH	SQ YD	1061		1061
44201057	CLASS B PATCHES, TYPE III, 17 INCH	SQ YD	17		17
44201298	DOWEL BARS 1 1/4"	EACH	2552		2552
44213200	SAWCUTS	FOOT	6044		6044
67100100	MOBILIZATION	L SUM	1		1
70100600	TRAFFIC CONTROL AND PROTECTION, STANDARD 701336	L SUM	1		1
Z0030850	TEMPORARY INFORMATION SIGNING	SQ FT	42		42

MODEL: Default  
FILE NAME: c:\pwworking\woodshank\100965724\66P12.dgn

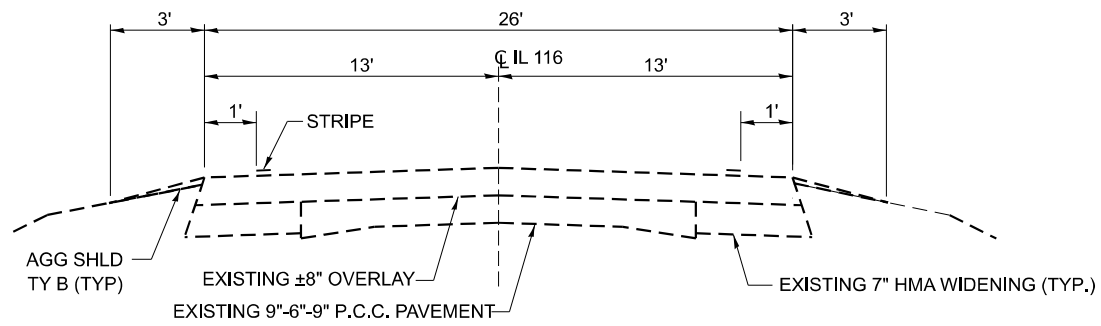
USER NAME = ronald.woodshank	DESIGNED - RW	REVISED -
DRAWN - RW	CHECKED - YP	REVISED -
PLOT SCALE = \$SCALE\$	DATE - 1/13/2024	REVISED -
PLOT DATE = 1/17/2024		

**STATE OF ILLINOIS  
DEPARTMENT OF TRANSPORTATION**

**SUMMARY OF QUANTITIES**

SCALE: SHEET 1 OF 1 SHEETS STA. TO STA.

F.A.P. RTE.	SECTION	COUNTY	TOTAL SHEETS	SHEET NO.
681	(115,116)PP	FORD	9	3
			CONTRACT NO. 66P12	
		ILLINOIS	FED. AID PROJECT	



**TYPICAL SECTION**

STA. 5+97 E TO 6+94 E

MODEL: Default  
FILE NAME: c:\pwworking\woodshank\110965724\66P12.dgn

USER NAME = ronald.woodshank	DESIGNED - RW	REVISED -
	DRAWN - RW	REVISED -
PLOT SCALE = \$SCALE\$	CHECKED - YP	REVISED -
PLOT DATE = 1/17/2024	DATE - 1/13/2024	REVISED -

**STATE OF ILLINOIS  
DEPARTMENT OF TRANSPORTATION**

**TYPICAL SECTIONS**

SCALE: SHEET 1 OF 1 SHEETS STA. TO STA.

F.A.P. RTE.	SECTION	COUNTY	TOTAL SHEETS	SHEET NO.
681	(115,116)PP	FORD	9	4
			CONTRACT NO. 66P12	
		ILLINOIS	FED. AID PROJECT	

**PATCHING SCHEDULE**

LOCATION	EASTBOUND LANE								WESTBOUND LANE							
	PATCH LENGTH	PATCH WIDTH	CLASS B			DOWEL BARS 1 1/4"	SAW CUTS	WELDED WIRE REINF.	PATCH LENGTH	PATCH WIDTH	CLASS B			DOWEL BARS 1 1/4"	SAW CUTS	WELDED WIRE REINF.
			TYPE II 17"	TYPE III 17"	TYPE IV 17"						TYPE II 17"	TYPE III 17"	TYPE IV 17"			
MILE MARKER	FEET	FEET	SQ YD	SQ YD	SQ YD	EACH	FOOT	SQ YD	FEET	FEET	SQ YD	SQ YD	SQ YD	EACH	FOOT	SQ YD
	IROQUOIS/FORD COUNTY LINE (N1800E RD.)															
0.07	6	13	9			22	51		6	13	9			22	51	
0.08	6	13	9			22	51		6	13	9			22	51	
0.17	6	13	9			22	51		6	13	9			22	51	
0.20	8	13	12			22	55		8	13	12			22	55	
0.34	6	13	9			22	51		6	13	9			22	51	
0.35	6	13	9			22	51									
0.42	18	13			26	22	75	26	18	13			26	22	75	26
0.42	6	13	9			22	51		6	13	9			22	51	
0.44	6	13	9			22	51		6	13	9			22	51	
0.51	6	13	9			22	51		6	13	9			22	51	
0.56	6	13	9			22	51		6	13	9			22	51	
0.57	6	13	9			22	51		6	13	9			22	51	
0.58	6	13	9			22	51		6	13	9			22	51	
0.85	10	13	14			22	59		10	13	14			22	59	
0.91	6	13	9			22	51		6	13	9			22	51	
1.10	6	13	9			22	51		6	13	9			22	51	
1.11	6	13	9			22	51		6	13	9			22	51	
1.18	6	13	9			22	51		6	13	9			22	51	
1.41	6	13	9			22	51									
1.43									6	13	9			22	51	
1.61	6	13	9			22	51		6	13	9			22	51	
1.72	12	13		17		22	63	17	6	13	9			22	51	
1.77	6	13	9			22	51									
1.80									8	13	12			22	55	
1.87									6	13	9			22	51	
2.05	6	13	9			22	51		6	13	9			22	51	
2.18	6	13	9			22	51									
2.20									6	13	9			22	51	
2.27	6	13	9			22	51		6	13	9			22	51	
2.31	6	13	9			22	51		6	13	9			22	51	
2.37	6	13	9			22	51		6	13	9			22	51	
2.42	6	13	9			22	51		6	13	9			22	51	
2.48									6	13	9			22	51	
2.49	6	13	9			22	51									
2.54	6	13	9			22	51		6	13	9			22	51	
2.65	6	13	9			22	51		6	13	9			22	51	
2.73	6	13	9			22	51		6	13	9			22	51	
3.15	6	13	9			22	51		6	13	9			22	51	
3.23	6	13	9			22	51		6	13	9			22	51	
3.32	6	13	9			22	51		6	13	9			22	51	
3.33	6	13	9			22	51									
<b>SUBTOTAL</b>	<b>240</b>		<b>314</b>	<b>17</b>	<b>26</b>	<b>792</b>	<b>1884</b>	<b>43</b>	<b>230</b>		<b>317</b>		<b>26</b>	<b>770</b>	<b>1825</b>	<b>26</b>

MODEL: Default  
FILE NAME: c:\pwworking\woodshank\100965734\66P12.dgn

USER NAME = ronald.woodshank	DESIGNED - RW	REVISED -
	DRAWN - RW	REVISED -
PLOT SCALE = \$SCALES	CHECKED - YP	REVISED -
PLOT DATE = 1/17/2024	DATE - 1/13/2024	REVISED -

**STATE OF ILLINOIS  
DEPARTMENT OF TRANSPORTATION**

**SCHEDULES**

SCALE: SHEET 1 OF 2 SHEETS STA. TO STA.

F.A.P. RTE.	SECTION	COUNTY	TOTAL SHEETS	SHEET NO.
681	(115,116)PP	FORD	9	5
CONTRACT NO. 66P12				
ILLINOIS FED. AID PROJECT				

**PATCHING SCHEDULE**

LOCATION	EASTBOUND LANE								WESTBOUND LANE							
	PATCH LENGTH	PATCH WIDTH	CLASS B			DOWEL BARS 1 1/4"	SAW CUTS	WELDED WIRE REINF.	PATCH LENGTH	PATCH WIDTH	CLASS B			DOWEL BARS 1 1/4"	SAW CUTS	WELDED WIRE REINF.
			TYPE II 17"	TYPE III 17"	TYPE IV 17"						TYPE II 17"	TYPE III 17"	TYPE IV 17"			
MILE MARKER	FEET	FEET	SQ YD	SQ YD	SQ YD	EACH	FOOT	SQ YD	FEET	FEET	SQ YD	SQ YD	SQ YD	EACH	FOOT	SQ YD
3.59	6	13	9			22	51		6	13	9			22	51	
3.63									6	13	9			22	51	
3.64	10	13	14			22	59									
3.79	6	13	9			22	51		6	13	9			22	51	
3.88	10	13	14			22	59		10	13	14			22	59	
4.23	6	13	9			22	51		6	13	9			22	51	
4.25	6	13	9			22	51		6	13	9			22	51	
4.30	6	13	9			22	51		6	13	9			22	51	
4.31	6	13	9			22	51		6	13	9			22	51	
4.33	6	13	9			22	51		6	13	9			22	51	
4.37	6	13	9			22	51		6	13	9			22	51	
4.46	6	13	9			22	51		6	13	9			22	51	
4.49									6	13	9			22	51	
4.58									6	13	9			22	51	
4.69	6	13	9			22	51		6	13	9			22	51	
4.74	6	13	9			22	51		6	13	9			22	51	
4.81	10	13	14			22	59		10	13	14			22	59	
4.91	6	13	9			22	51		6	13	9			22	51	
5.07	6	13	9			22	51									
5.09									6	13	9			22	51	
5.29	6	13	9			22	51		6	13	9			22	51	
5.38	6	13	9			22	51		6	13	9			22	51	
5.42	6	13	9			22	51		6	13	9			22	51	
5.61	6	13	9			22	51		6	13	9			22	51	
5.77	6	13	9			22	51									
5.81	6	13	9			22	51		6	13	9			22	51	
6.00	LIVINGSTON/FORD COUNTY LINE (N1200E RD.)															
SUBTOTAL	144		213	0	0	484	1146		146		217	0	0	506	1189	0
<b>TOTAL</b>	<b>384</b>		<b>527</b>	<b>17</b>	<b>26</b>	<b>1276</b>	<b>3030</b>	<b>43</b>	<b>376</b>		<b>534</b>	<b>0</b>	<b>26</b>	<b>1276</b>	<b>3014</b>	<b>26</b>

MODEL: Default  
FILE NAME: c:\pwworking\woodshank\100965734\66P12.dgn

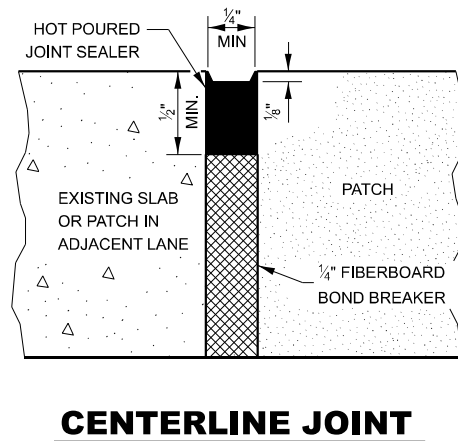
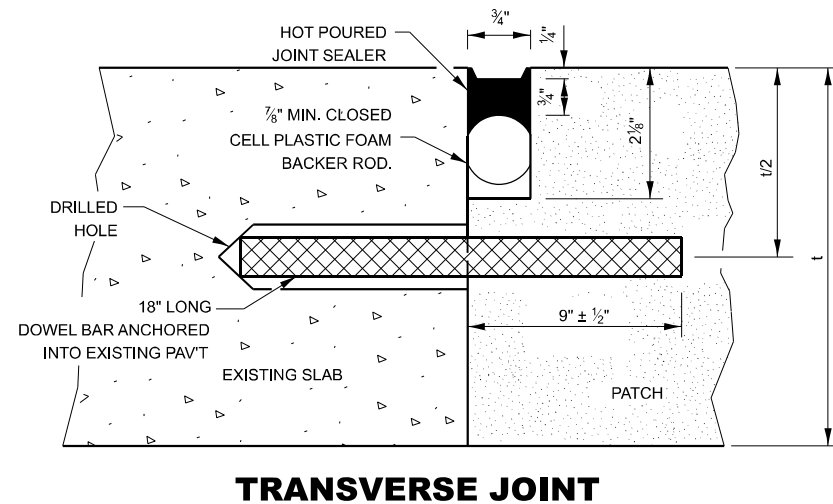
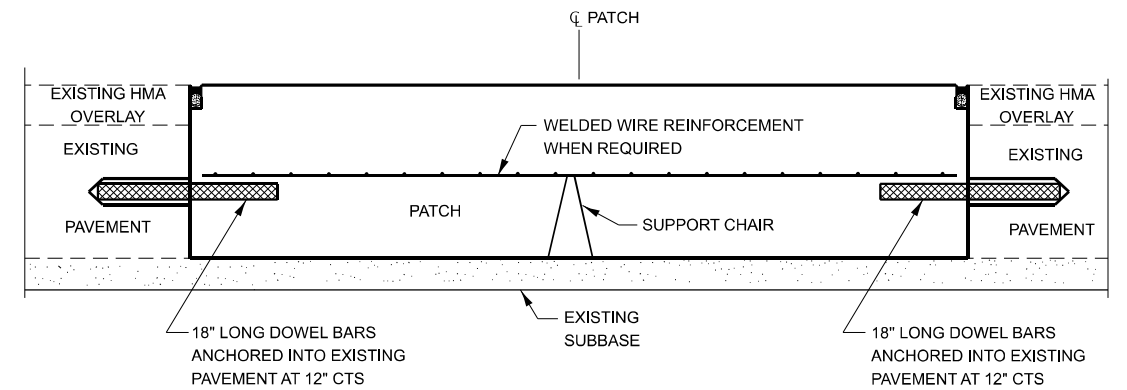
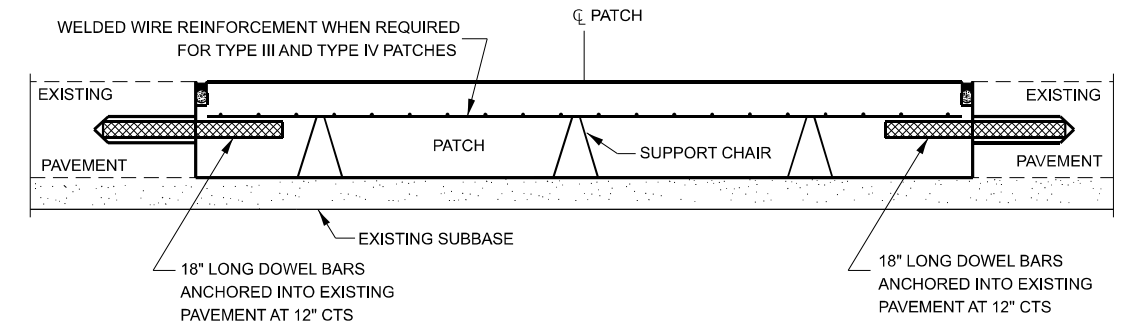
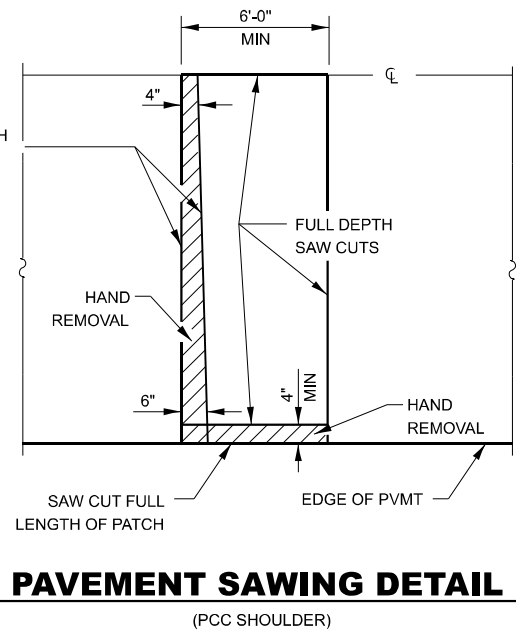
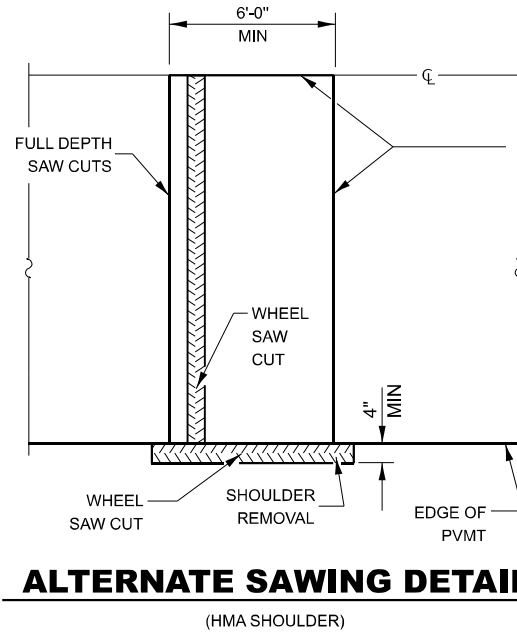
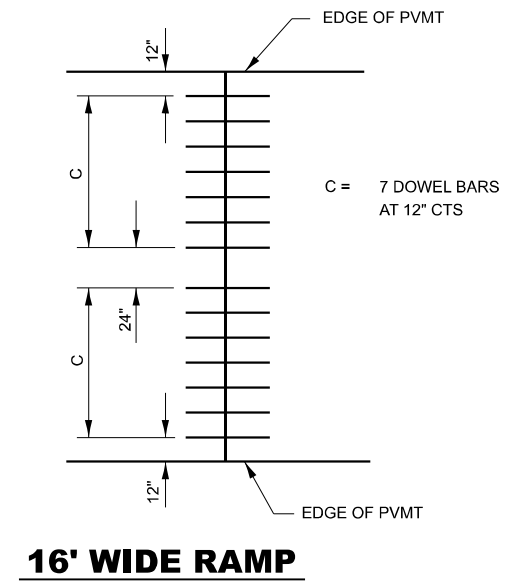
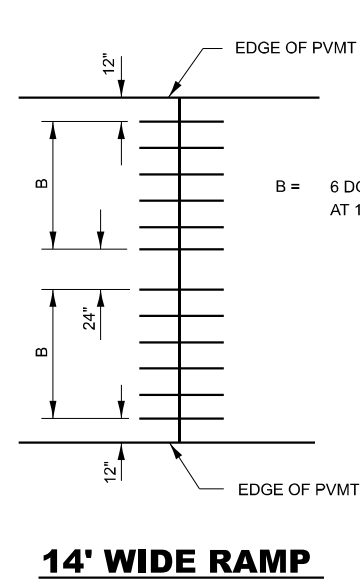
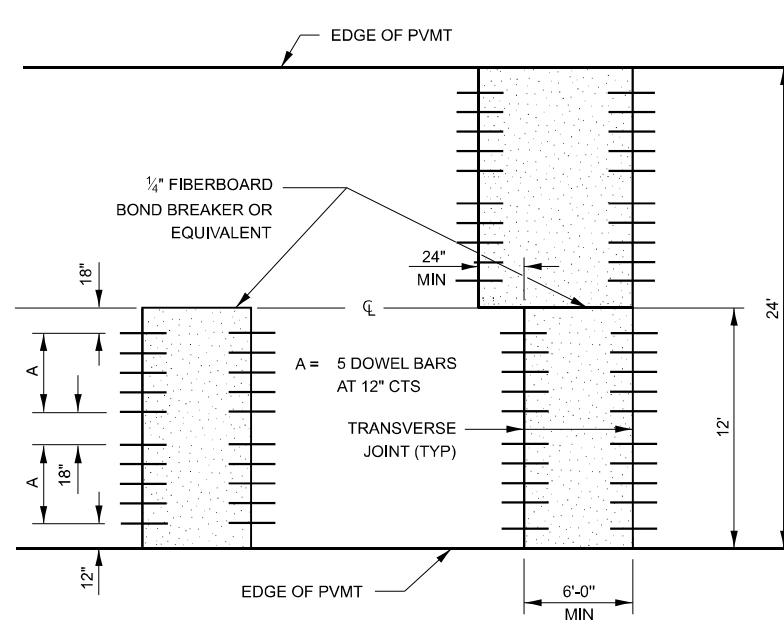
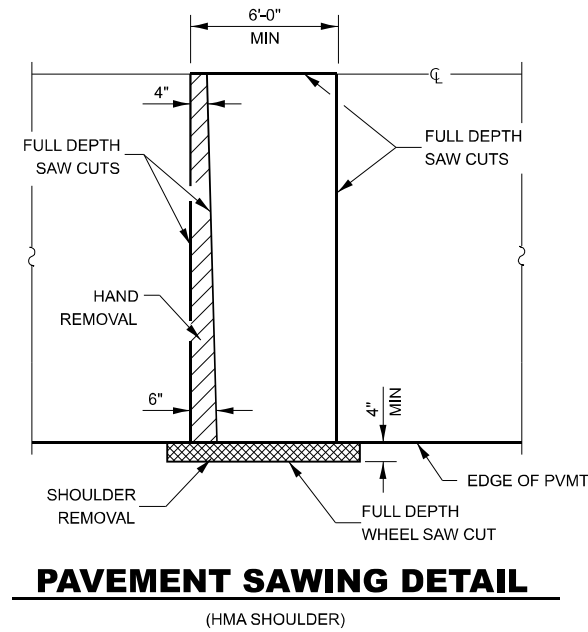
USER NAME = ronald.woodshank	DESIGNED - RW	REVISED -
	DRAWN - RW	REVISED -
PLOT SCALE = \$SCALE\$	CHECKED - YP	REVISED -
PLOT DATE = 1/17/2024	DATE - 1/13/2024	REVISED -

**STATE OF ILLINOIS  
DEPARTMENT OF TRANSPORTATION**

**SCHEDULES**

SCALE: SHEET 2 OF 2 SHEETS STA. TO STA.

F.A.P. RTE.	SECTION	COUNTY	TOTAL SHEETS	SHEET NO.
681	(115,116)PP	FORD	9	6
CONTRACT NO. 66P12				
ILLINOIS FED. AID PROJECT				



DOWEL BAR TABLE		
PAVEMENT THICKNESS	DOWEL BAR DIAMETER	HOLE DIAMETER
8" OR GREATER	1 1/2"	1 5/8"
7" THRU 7.99"	1 1/4"	1 3/8"
LESS THAN 7"	1"	1 1/8"

**GENERAL NOTES**

THE TRANSVERSE JOINTS FOR CLASS B PATCHES SHALL ALIGN WITH JOINTS OR CRACKS IN THE ADJACENT LANE WHENEVER POSSIBLE.

SEE STANDARD 420701 FOR DETAILS OF PAVEMENT WELDED WIRE REINFORCEMENT.

MODEL: Default  
FILE NAME: C:\pwwork\woodshank\10096573.dwg 1/17/2024

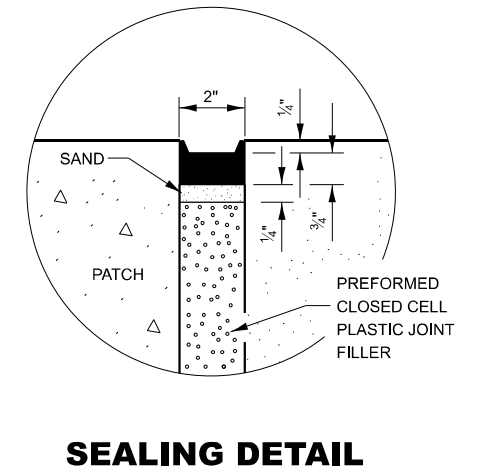
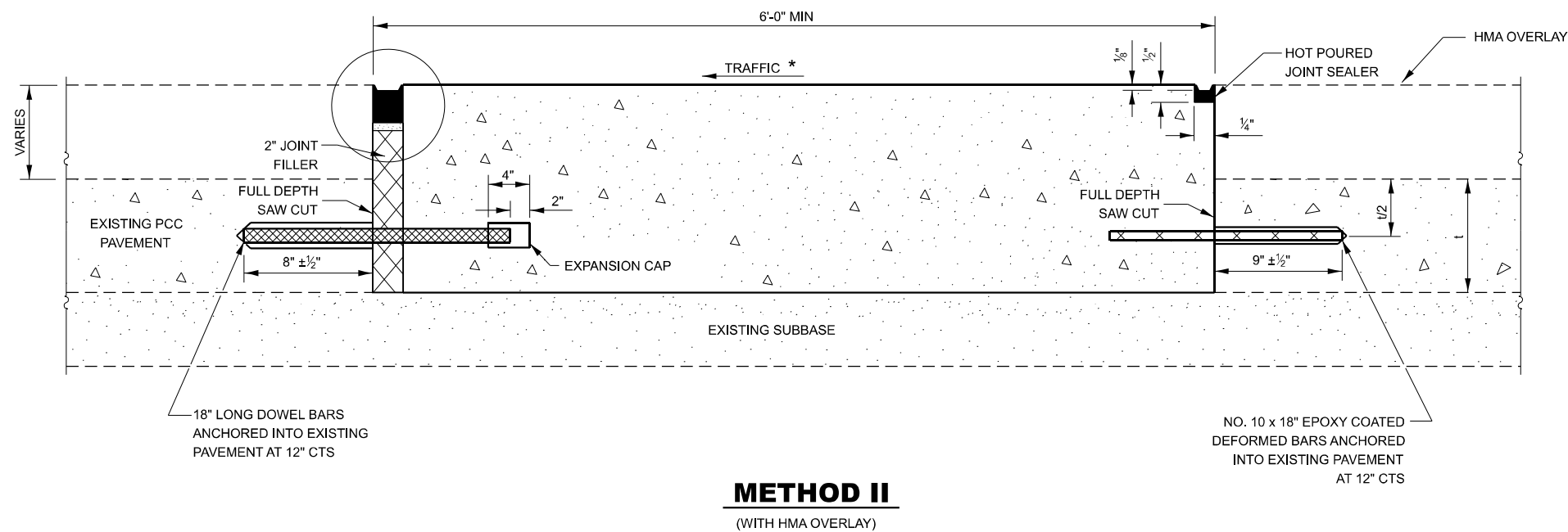
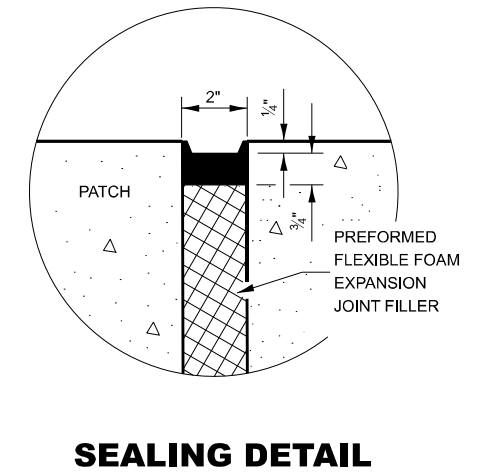
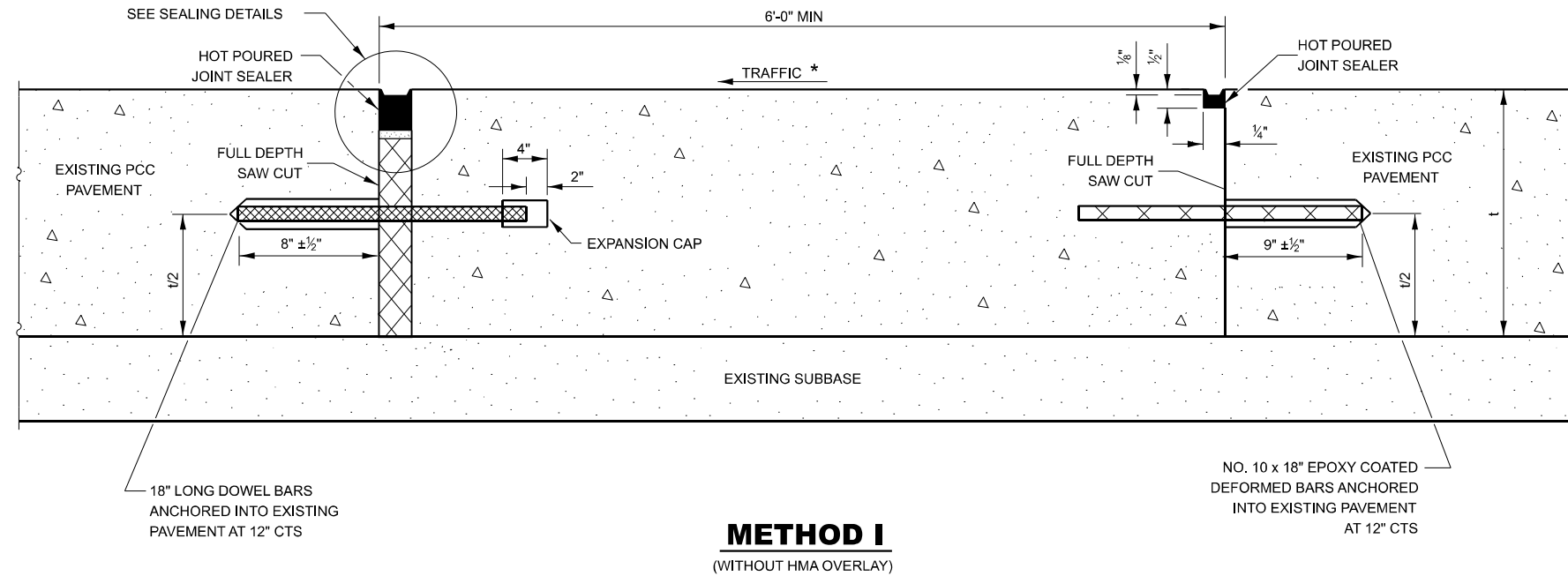
USER NAME = ronald.woodshank	DESIGNED - RW	REVISED -
PLOT SCALE = \$SCALES	DRAWN - RW	REVISED -
PLOT DATE = 1/17/2024	CHECKED - YP	REVISED -
	DATE - 1/13/2024	REVISED -

STATE OF ILLINOIS  
DEPARTMENT OF TRANSPORTATION

CLASS B PATCHING DETAILS

SCALE: SHEET 1 OF 2 SHEETS STA. TO STA.

F.A.P. RTE. 681	SECTION (115,116)PP	COUNTY FORD	TOTAL SHEETS 9	SHEET NO. 7
CONTRACT NO. 66P12				
ILLINOIS FED. AID PROJECT				



**NOTE**

\* WHEN RE-ESTABLISHING A TRANSVERSE EXPANSION JOINT ON A TWO-WAY ROAD, REVERSE THE ORIENTATION OF THE DOWEL BARS WITH RESPECT TO TRAFFIC FOR ONE OF THE PATCHES SUCH THAT THE JOINT WILL BE CONTINUOUS ACROSS BOTH LANES.

MODEL: Default  
FILE NAME: c:\pwwork\woodshank\100965734\66P12.dgn

USER NAME = ronald.woodshank	DESIGNED - RW	REVISED -
DRAWN - RW	CHECKED - YP	REVISED -
PLOT SCALE = \$SCALE\$	DATE - 1/13/2024	REVISED -
PLOT DATE = 1/17/2024		

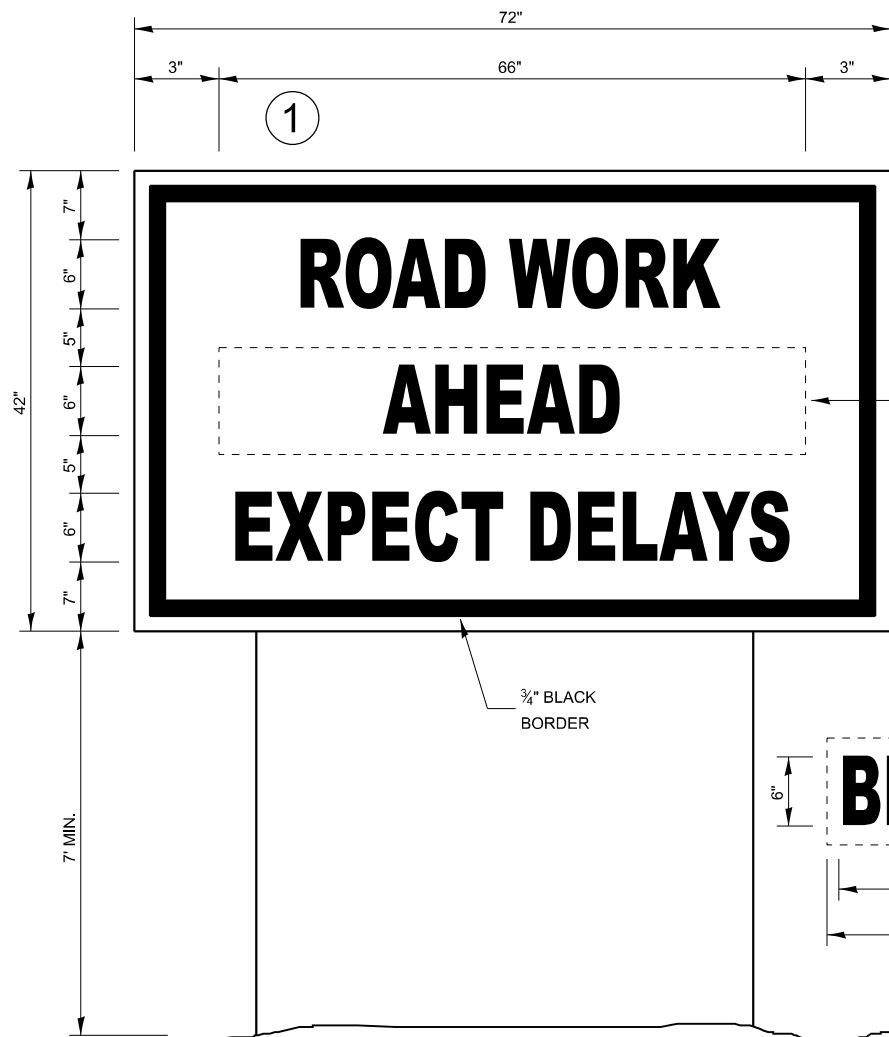
STATE OF ILLINOIS  
DEPARTMENT OF TRANSPORTATION

CLASS B PATCHING DETAILS

SCALE: SHEET 2 OF 2 SHEETS STA. TO STA.

F.A.P. RTE.	SECTION	COUNTY	TOTAL SHEETS	SHEET NO.
681	(115,116)PP	FORD	9	8
CONTRACT NO. 66P12				
ILLINOIS FED. AID PROJECT				

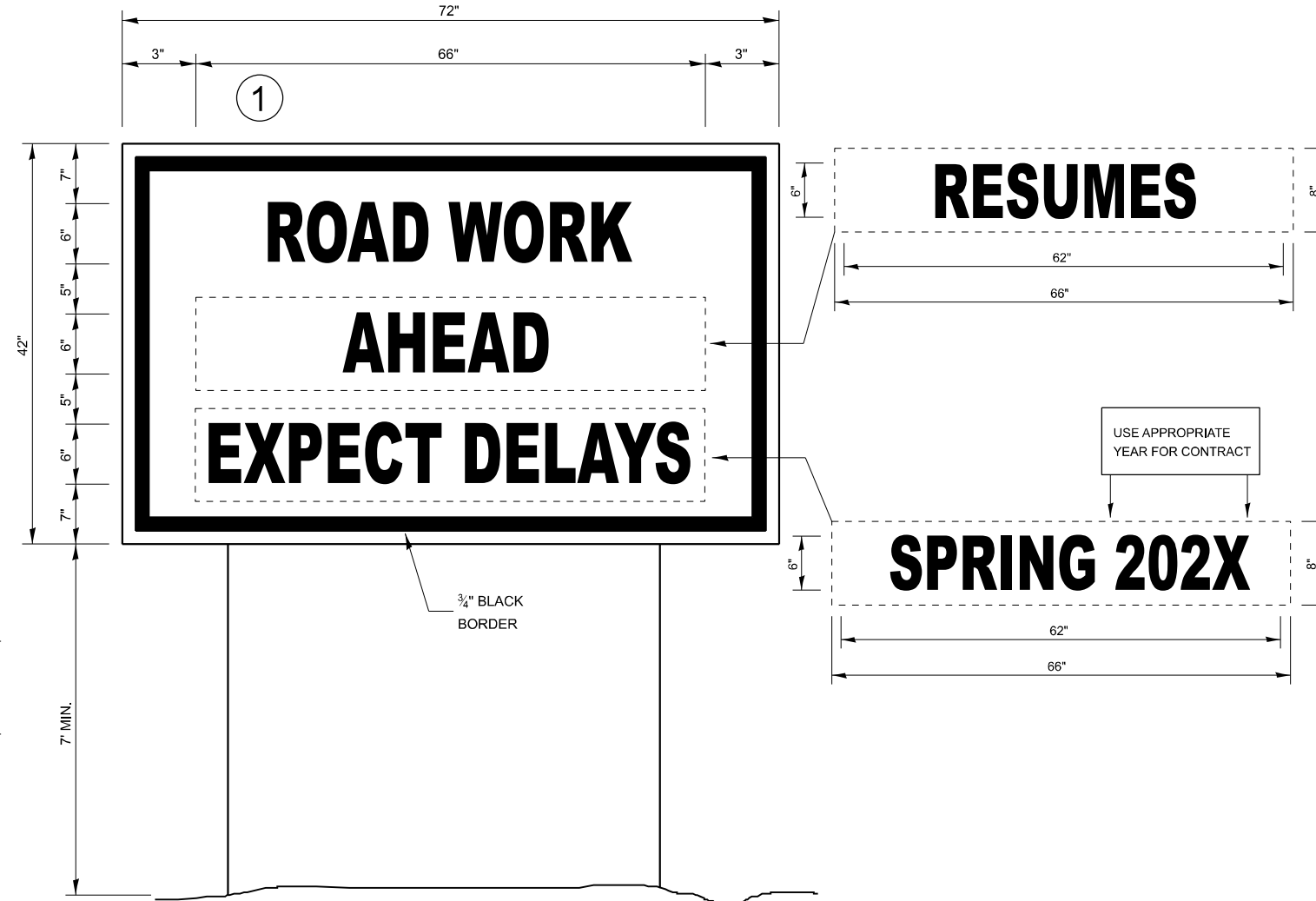




**TEMPORARY INFORMATION SIGNING**

**NOTES:**

1. USE 6" D BLACK LETTERING ON FLOURESENT ORANGE BACKGROUND.
2. ERECT SIGNS AT LOCATIONS IN ADVANCE OF THE "ROAD CONSTRUCTION AHEAD" SIGNS AS DIRECTED BY THE ENGINEER.
3. ERECT SIGN 1 WITH INSTALLED PANEL 2 A MINIMUM OF ONE WEEK PRIOR TO THE START OF THE LANE CLOSURE.
4. REMOVE PANEL 2 ON THAT DATE.
5. SEE SPECIAL PROVISION "TEMPORARY INFORMATION SIGNING" FOR ADDITIONAL INFORMATION.
6. WILL BE PAID FOR PER SQ FT AS "TEMPORARY INFORMATION SIGNING". EACH SIGN = 21 SQ FT AND THE DATE PANEL 2 WILL NOT BE MEASURED SEPARATELY FOR PAYMENT.



**WINTER SHUT DOWN SIGNING**

MODEL: Default  
FILE NAME: c:\pwwork\woodshank\100965724\66P12.dgn

USER NAME = ronald.woodshank	DESIGNED - RW	REVISED -
	DRAWN - RW	REVISED -
PLOT SCALE = \$SCALE\$	CHECKED - YP	REVISED -
PLOT DATE = 1/17/2024	DATE - 1/13/2024	REVISED -

**STATE OF ILLINOIS  
DEPARTMENT OF TRANSPORTATION**

<b>TEMPORARY INFORMATION SIGNING</b>			
SCALE:	SHEET 1 OF 1 SHEETS	STA.	TO STA.

F.A.P. RTE.	SECTION	COUNTY	TOTAL SHEETS	SHEET NO.
681	(115,116)PP	FORD	9	9
CONTRACT NO. 66P12				
ILLINOIS FED. AID PROJECT				