

STATE OF ILLINOIS
DEPARTMENT OF TRANSPORTATION

F.A.P. RTE.	SECTION	COUNTY	TOTAL SHEETS	SHEET NO.
796	(5,6)PP	FORD	10	1
		ILLINOIS	CONTRACT NO. 66P13	

INDEX OF SHEETS

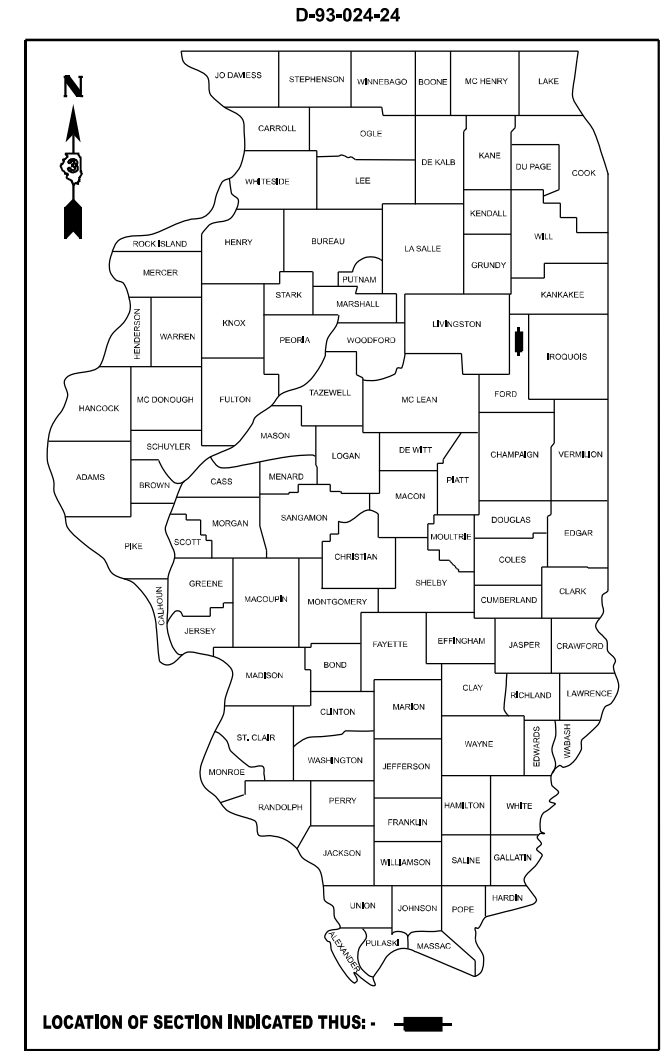
1. COVER SHEET
2. GENERAL NOTES
3. SUMMARY OF QUANTITIES
4. TYPICAL SECTIONS
- 5-7. SCHEDULES
- 8-9. CLASS B PATCHING DETAILS
10. TEMPORARY INFORMATION SIGNING

HIGHWAY STANDARDS

- | | |
|-----------|---|
| 000001-08 | STANDARD SYMBOLS, ABBREVIATIONS AND PATTERNS |
| 001001-02 | AREAS OF REINFORCEMENT BARS |
| 001006 | DECIMAL OF AN INCH AND OF A FOOT |
| 701001-02 | OFF-ROAD OPERATIONS 2L, 2W, MORE THAN 15' AWAY |
| 701006-05 | OFF-ROAD OPERATIONS 2L, 2W, 15' TO 24" FROM PAVEMENT EDGE |
| 701301-04 | LANE CLOSURE, 2L, 2W, SHORT TIME OPERATIONS |
| 701336-07 | LANE CLOSURE, 2L, 2W, WORK AREAS IN SERIES, FOR SPEEDS ≥ 45 MPH |
| 701901-09 | TRAFFIC CONTROL DEVICES |

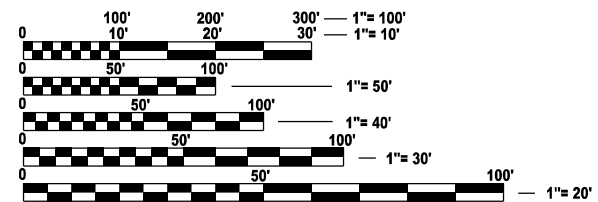
**PROPOSED
HIGHWAY PLANS**

**F.A.P. ROUTE 796 (IL 115)
SECTION (5,6)PP
CLASS B PAVEMENT PATCHING
FORD COUNTY**



END IMPROVEMENT
IL ROUTE 116
LOG MILE 8.50

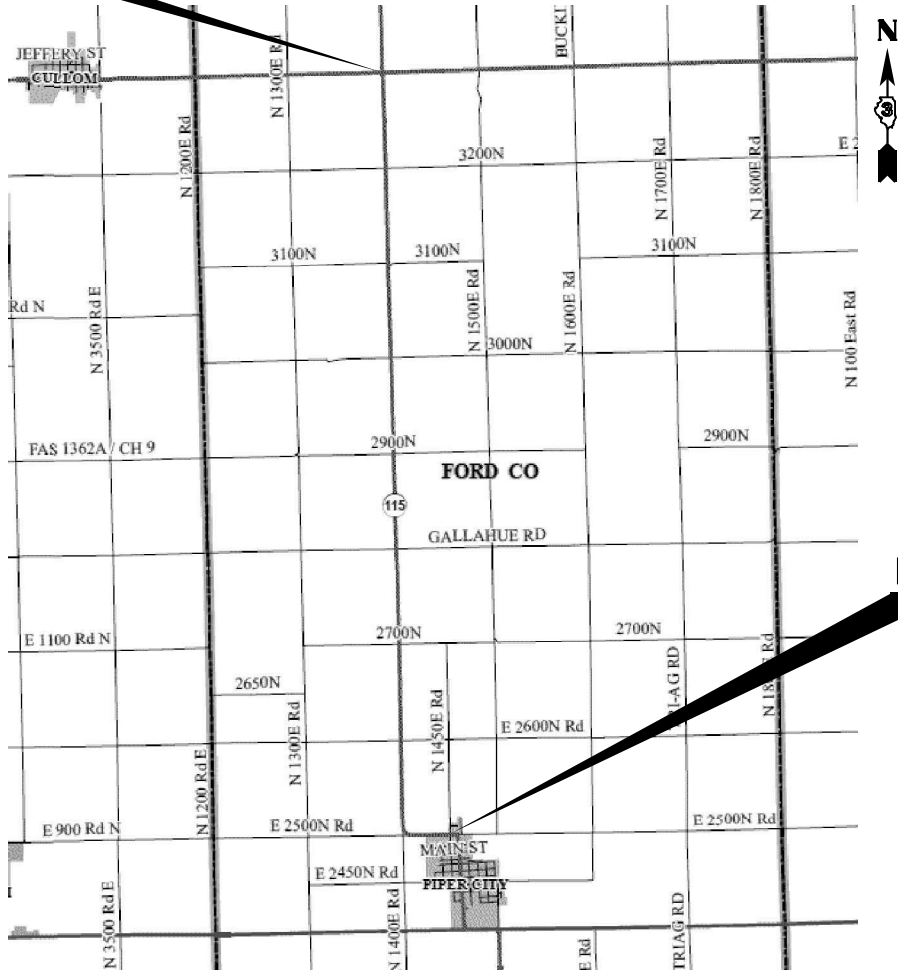
C-93-057-24



FULL SIZE PLANS HAVE BEEN PREPARED USING STANDARD ENGINEERING SCALES. REDUCED SIZED PLANS WILL NOT CONFORM TO STANDARD SCALES. IN MAKING MEASUREMENTS ON REDUCED PLANS, THE ABOVE SCALES MAY BE USED.

J.U.L.I.E.
JOINT UTILITY LOCATION INFORMATION FOR EXCAVATION
1-800-892-0123
OR 811

PROJECT ENGINEER YOGESH PATEL P.E.
UNIT CHIEF RON WOODSHANK
DISTRICT 3 (815) 434-6131
CONTRACT NO. 66P13



BEGIN IMPROVEMENT
PINE STREET
(N 1450 E RD.)
LOG MILE 0.00

GROSS LENGTH = 44,880.0 FT. = 8.50 MILE
NET LENGTH = 1,519 FT. = 0.29 MILE

FUNCTIONAL CLASSIFICATION
RURAL MAJOR COLLECTOR
F.A.P. ROUTE 796 (IL 115)
2021 ADT = 550
P.V. 89.2 % S.U. 5.4 % M.U. 5.4 %

STATE OF ILLINOIS
DEPARTMENT OF TRANSPORTATION

SUBMITTED March 26, 2024
Trisha Thompson
REGIONAL ENGINEER

May 10, 2024 *[Signature]*
ENGINEER OF DESIGN AND ENVIRONMENT

May 10, 2024 *[Signature]*
DIRECTOR OF HIGHWAYS PROJECT IMPLEMENTATION

**PRINTED BY THE AUTHORITY
OF THE STATE OF ILLINOIS**

GENERAL NOTES

ALL EXCAVATED MATERIAL, WHICH INCLUDES DIGGING OR GRADING OF ANY SOIL OR FILL MATERIAL, WITH THE EXCEPTION OF AGGREGATE FILLS, MUST BE INCORPORATED WITHIN THE IDOT RIGHT OF WAY.

COMMITMENTS

NONE

**STATE OF ILLINOIS
DEPARTMENT OF TRANSPORTATION
DISTRICT THREE
AS BUILT INFORMATION**

SUPERVISING CONSTRUCTION FIELD ENGINEER

RESIDENT ENGINEER / TECHNICIAN

**START & END DATES
OF CONSTRUCTION:**

INSPECTORS:

MODEL: Default
FILE NAME: c:\pwwork\woodshank\0966579\66P13.dgn

USER NAME = ronald.woodshank	DESIGNED - RW	REVISED -
	DRAWN - RW	REVISED -
PLOT SCALE = \$SCALE\$	CHECKED - YP	REVISED -
PLOT DATE = 2/16/2024	DATE - 1/13/2024	REVISED -

**STATE OF ILLINOIS
DEPARTMENT OF TRANSPORTATION**

GENERAL NOTES

SCALE: SHEET 1 OF 1 SHEETS STA. TO STA.

F.A.P. RTE.	SECTION	COUNTY	TOTAL SHEETS	SHEET NO.
796	(5,6)PP	FORD	10	2
			CONTRACT NO. 66P13	
		ILLINOIS	FED. AID PROJECT	

CODE NO.	ITEM	UNIT	TOTAL QUANTITY	CONSTRUCTION CODE	
				CONTRACT MAINTENANCE	
				100% STATE	
				ROADWAY	
				0006	
				RURAL	
44200050	WELDED WIRE REINFORCEMENT	SQ YD	235		235
44200994	CLASS B PATCHES, TYPE II, 12 INCH	SQ YD	1739		1739
44200998	CLASS B PATCHES, TYPE III, 12 INCH	SQ YD	242		242
44201000	CLASS B PATCHES, TYPE IV, 12 INCH	SQ YD	50		50
44201298	DOWEL BARS 1 1/4"	EACH	4260		4260
44213200	SAW CUTS	FOOT	10973		10973
67100100	MOBILIZATION	L SUM	1		1
70100600	TRAFFIC CONTROL AND PROTECTION, STANDARD 701336	L SUM	1		1
Z0030850	TEMPORARY INFORMATION SIGNING	SQ FT	42		42

MODEL: Default
FILE NAME: c:\pwworking\woodshank\10066579\66P13.dgn

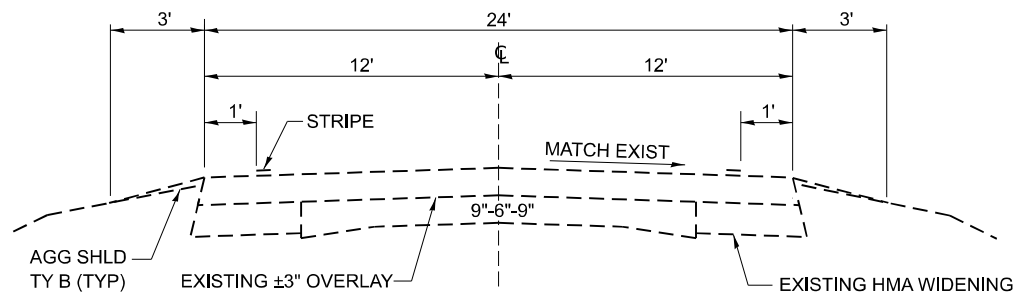
USER NAME = ronald.woodshank	DESIGNED - RW	REVISED -
	DRAWN - RW	REVISED -
PLOT SCALE = \$SCALE\$	CHECKED - YP	REVISED -
PLOT DATE = 2/16/2024	DATE - 1/13/2024	REVISED -

**STATE OF ILLINOIS
DEPARTMENT OF TRANSPORTATION**

SUMMARY OF QUANTITIES

SCALE: SHEET 1 OF 1 SHEETS STA. TO STA.

F.A.P. RTE.	SECTION	COUNTY	TOTAL SHEETS	SHEET NO.
796	(5,6)PP	FORD	10	3
			CONTRACT NO. 66P13	
		ILLINOIS	FED. AID PROJECT	



TYPICAL SECTION
LOG MILE 0.00 TO LOG MILE 8.50

MODEL: Default
 FILE NAME: c:\pwworking\woodshank\100966579\66P13.dgn

USER NAME = ronald.woodshank	DESIGNED - RW	REVISED -
	DRAWN - RW	REVISED -
PLOT SCALE = \$SCALE\$	CHECKED - YP	REVISED -
PLOT DATE = 2/16/2024	DATE - 1/13/2024	REVISED -

STATE OF ILLINOIS
DEPARTMENT OF TRANSPORTATION

TYPICAL SECTIONS

SCALE: SHEET 1 OF 1 SHEETS STA. TO STA.

F.A.P. RTE.	SECTION	COUNTY	TOTAL SHEETS	SHEET NO.
796	(5,6)PP	FORD	10	4
CONTRACT NO. 66P13				
ILLINOIS FED. AID PROJECT				

PATCHING SCHEDULE

LOCATION	EASTBOUND LANE								WESTBOUND LANE							
	PATCH LENGTH	PATCH WIDTH	CLASS B			DOWEL BARS 1 1/4"	SAW CUTS	WELDED WIRE REINF.	PATCH LENGTH	PATCH WIDTH	CLASS B			DOWEL BARS 1 1/4"	SAW CUTS	WELDED WIRE REINF.
			TYPE II 17"	TYPE III 17"	TYPE IV 17"						TYPE II 17"	TYPE III 17"	TYPE IV 17"			
MILE MARKER	FEET	FEET	SQ YD	SQ YD	SQ YD	EACH	FOOT	SQ YD	FEET	FEET	SQ YD	SQ YD	SQ YD	EACH	FOOT	SQ YD
0.00	PINE STREET (1450E RD.)															
0.600									10	12	13			20	59	
0.703									6	12	8			20	51	
0.705									6	12	8			20	51	
0.900									14	12		19		20	67	
1.100									10	12	13			20	59	
1.300	14	12		19		20	67	19	6	12	8			20	51	
1.400	6	12	8			20	51		10	12	13			20	59	
1.513									6	12	8			20	51	
1.557	8	12	11			20	55		8	12	11			20	55	
1.600	8	12	11			20	55		8	12	11			20	55	
1.966	8	12	11			20	55		8	12	11			20	55	
1.999	6	12	8			20	51		8	12	11			20	55	
2.000	6	12	8			20	51		14	12		19		20	67	
2.101	8	12	11			20	55		8	12	11			20	55	
2.121	6	12	8			20	51									
2.123									10	12	13			20	59	
2.183	8	12	11			20	55									
2.300	10	12	13			20	59		10	12	13			20	59	
2.380	10	12	13			20	59		10	12	13			20	59	
2.425	10	12	13			20	59		6	12	8			20	51	
2.500									6	12	8			20	51	
2.516	6	12	8			20	51		6	12	8			20	51	
2.537	14	12		19		20	67	19	14	12		19		20	67	
2.595	8	12	11			20	55		8	12	11			20	55	
2.638	6	12	8			20	51		6	12	8			20	51	
2.655	6	12	8			20	51		6	12	8			20	51	
2.666	8	12	11			20	55		6	12	8			20	51	
2.691	6	12	8			20	51									
2.713	6	12	8			20	51									
2.723	8	12	11			20	55		8	12	11			20	55	
2.814									6	12	8			20	51	
2.822	6	12	8			20	51		6	12	8			20	51	
2.881	19	12			25	20	77	25	19	12			25	20	77	25
2.896	10	12	13			20	59		10	12	13			20	59	
2.922	8	12	11			20	55		8	12	11			20	55	
2.954	8	12	11			20	55		8	12	11			20	55	
2.971	6	12	8			20	51		6	12	8			20	51	
3.116	8	12	11			20	55			12				20		
3.131	10	12	13			20	59		10	12	13			20	59	
3.170	10	12	13			20	59			12				20		
3.238	8	12	11			20	55		6	12	8			20	51	
3.355	6	12	8			20	51		6	12	8			20	51	
SUBTOTAL	275		306	38	25	660	1837	63	303		323	57	25	760	2010	25

MODEL: Default
FILE NAME: c:\pwworking\woodshank\140966579\66P13.dgn

USER NAME = ronald.woodshank	DESIGNED - RW	REVISED -
	DRAWN - RW	REVISED -
PLOT SCALE = \$\$SCALE\$	CHECKED - YP	REVISED -
PLOT DATE = 2/16/2024	DATE - 1/13/2024	REVISED -

**STATE OF ILLINOIS
DEPARTMENT OF TRANSPORTATION**

SCHEDULES			
SCALE:	SHEET 1	OF 3 SHEETS	STA. TO STA.

F.A.P. RTE.	SECTION	COUNTY	TOTAL SHEETS	SHEET NO.
796	(5,6)PP	FORD	10	5
CONTRACT NO. 66P13				
ILLINOIS FED. AID PROJECT				

PATCHING SCHEDULE

LOCATION	EASTBOUND LANE								WESTBOUND LANE							
	PATCH LENGTH	PATCH WIDTH	CLASS B			DOWEL BARS 1 1/4"	SAW CUTS	WELDED WIRE REINF.	PATCH LENGTH	PATCH WIDTH	CLASS B			DOWEL BARS 1 1/4"	SAW CUTS	WELDED WIRE REINF.
			TYPE II 17"	TYPE III 17"	TYPE IV 17"						TYPE II 17"	TYPE III 17"	TYPE IV 17"			
MILE MARKER	FEET	FEET	SQ YD	SQ YD	SQ YD	EACH	FOOT	SQ YD	FEET	FEET	SQ YD	SQ YD	SQ YD	EACH	FOOT	SQ YD
3.534	6	12	8			20	48			12				20		
3.628	14	12		19		20	64	19		12				20		
3.700									6	12	8			20	48	
3.722	10	12	13			20	56									
3.801	8	12	11			20	52		8	12	11			20	52	
3.811	6	12	8			20	48		6	12	8			20	48	
3.820	6	12	8			20	48		6	12	8			20	48	
3.834	6	12	8			20	48		6	12	8			20	48	
3.937	10	12	13			20	56		10	12	13			20	56	
4.081	15	12		20		20	66	20								
4.101	6	12	8			20	48									
4.161	6	12	8			20	48		6	12	8			20	48	
4.187	6	12	8			20	48		6	12	8			20	48	
4.309	6	12	8			20	48		6	12	8			20	48	
4.324	6	12	8			20	48									
4.388	6	12	8			20	48		6	12	8			20	48	
4.400	6	12	8			20	48		6	12	8			20	48	
4.425	10	12	13			20	56									
4.495	6	12	8			20	48		6	12	8			20	48	
4.573	6	12	8			20	48									
4.594	6	12	8			20	48									
4.616	6	12	8			20	48		6	12	8			20	48	
4.681	6	12	8			20	48									
4.732	6	12	8			20	48		6	12	8			20	48	
4.754	6	12	8			20	48		6	12	8			20	48	
4.924	8	12	11			20	52		8	12	11			20	52	
5.013	6	12	8			20	48		6	12	8			20	48	
5.064	6	12	8			20	48									
5.116	6	12	8			20	48		6	12	8			20	48	
5.158	6	12	8			20	48									
5.217	6	12	8			20	48									
5.293	8	12	11			20	52		8	12	11			20	52	
5.326	6	12	8			20	48		6	12	8			20	48	
5.339	6	12	8			20	48		6	12	8			20	48	
5.364	6	12	8			20	48		6	12	8			20	48	
5.413	6	12	8			20	48		6	12	8			20	48	
5.461	6	12	8			20	48		6	12	8			20	48	
5.476	6	12	8			20	48		6	12	8			20	48	
5.000	8	12	11			20	52		8	12	11			20	52	
5.664	6	12	8			20	48		6	12	8			20	48	
5.787	6	12	8			20	48		6	12	8			20	48	
5.835	6	12	8			20	48		6	12	8			20	48	
5.867	6	12	8			20	48		6	12	8			20	48	
SUBTOTAL	289		347	39	0	840	2090	39	192		257	0	0	640	1464	0

MODEL: Default
FILE NAME: c:\pwworking\woodshank\1006657966P13.dgn

USER NAME = ronald.woodshank	DESIGNED - RW	REVISED -
	DRAWN - RW	REVISED -
PLOT SCALE = \$SCALES	CHECKED - YP	REVISED -
PLOT DATE = 2/16/2024	DATE - 1/13/2024	REVISED -

**STATE OF ILLINOIS
DEPARTMENT OF TRANSPORTATION**

SCHEDULES

SCALE: SHEET 2 OF 3 SHEETS STA. TO STA.

F.A.P. RTE.	SECTION	COUNTY	TOTAL SHEETS	SHEET NO.
796	(5,6)PP	FORD	10	6
CONTRACT NO. 66P13				
ILLINOIS FED. AID PROJECT				

PATCHING SCHEDULE

LOCATION	EASTBOUND LANE								WESTBOUND LANE							
	PATCH LENGTH	PATCH WIDTH	CLASS B			DOWEL BARS 1 1/4"	SAW CUTS	WELDED WIRE REINF.	PATCH LENGTH	PATCH WIDTH	CLASS B			DOWEL BARS 1 1/4"	SAW CUTS	WELDED WIRE REINF.
			TYPE II 17"	TYPE III 17"	TYPE IV 17"						TYPE II 17"	TYPE III 17"	TYPE IV 17"			
MILE MARKER	FEET	FEET	SQ YD	SQ YD	SQ YD	EACH	FOOT	SQ YD	FEET	FEET	SQ YD	SQ YD	SQ YD	EACH	FOOT	SQ YD
5.880									6	12	8			20	51	
5.892	6	12	8			20	51		6	12	8			20	51	
6.104	6	12	8			20	51		6	12	8			20	51	
6.140	6	12	8			20	51		6	12	8			20	51	
6.153	6	12	8			20	51		6	12	8			20	51	
6.358	6	12	8			20	51		6	12	8			20	51	
6.366	6	12	8			20	51									
6.402	6	12	8			20	51		6	12	8			20	51	
6.439	6	12	8			20	51		6	12	8			20	51	
6.637	6	12	8			20	51		6	12	8			20	51	
6.685	6	12	8			20	51		6	12	8			20	51	
6.719	6	12	8			20	51		6	12	8			20	51	
6.816	6	12	8			20	51		6	12	8			20	51	
6.821	10	12	13			20	59		6	12	8			20	51	
6.859	6	12	8			20	51									
7.005	6	12	8			20	51									
7.011	6	12	8			20	51		6	12	8			20	51	
7.054	6	12	8			20	51		6	12	8			20	51	
7.085	6	12	8			20	51		6	12	8			20	51	
7.138	10	12	13			20	59									
7.160	6	12	8			20	51		6	12	8			20	51	
7.194	6	12	8			20	51									
7.220	6	12	8			20	51									
7.266	6	12	8			20	51		6	12	8			20	51	
7.340	6	12	8			20	51		6	12	8			20	51	
7.435	6	12	8			20	51									
7.461	6	12	8			20	51		6	12	8			20	51	
7.493	6	12	8			20	51		6	12	8			20	51	
7.515	6	12	8			20	51		6	12	8			20	51	
7.618	6	12	8			20	51		6	12	8			20	51	
7.666	12	12		16		20	63	16	12	12		16		20	63	16
7.780	14	12		19		20	67	19	14	12		19		20	67	19
7.805	14	12		19		20	67	19	14	12		19		20	67	19
7.832	6	12	8			20	51		6	12	8			20	51	
7.955	6	12	8			20	51		6	12	8			20	51	
8.229	6	12	8			20	51		6	12	8			20	51	
8.278	6	12	8			20	51		6	12	8			20	51	
8.330	6	12	8			20	51									
8.430	6	12	8			20	51									
8.500	INTERSECTION IL 115/116															
SUBTOTAL	258		290	54	0	760	1998	54	202		216	54	0	600	1574	54
TOTALS	822		943	131	25	2260	5925	156	697	0	796	111	25	2000	5048	79

MODEL: Default
FILE NAME: c:\pwworking\woodshank\115\66P13.dgn

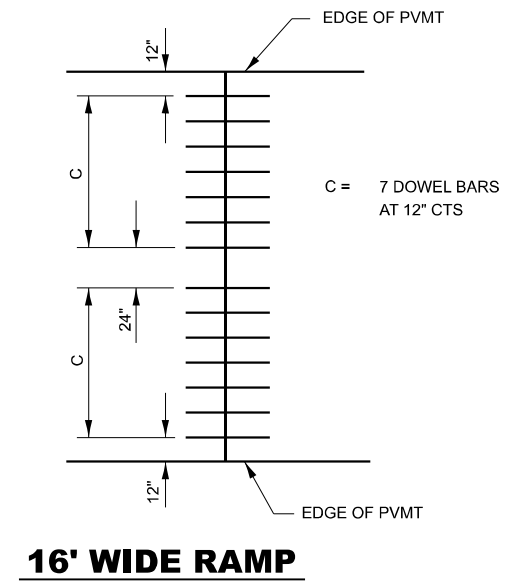
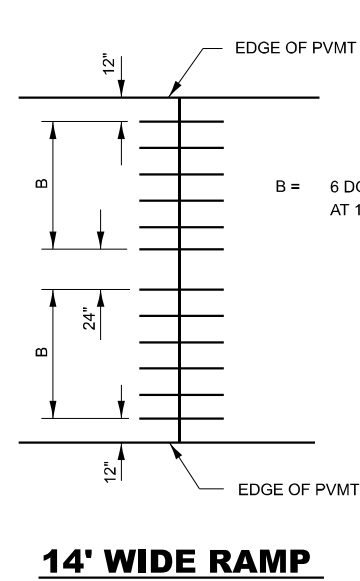
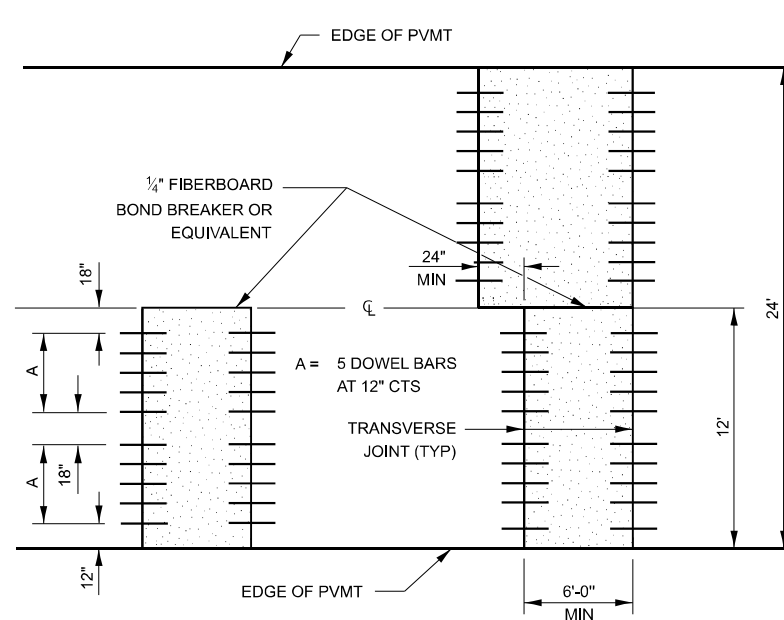
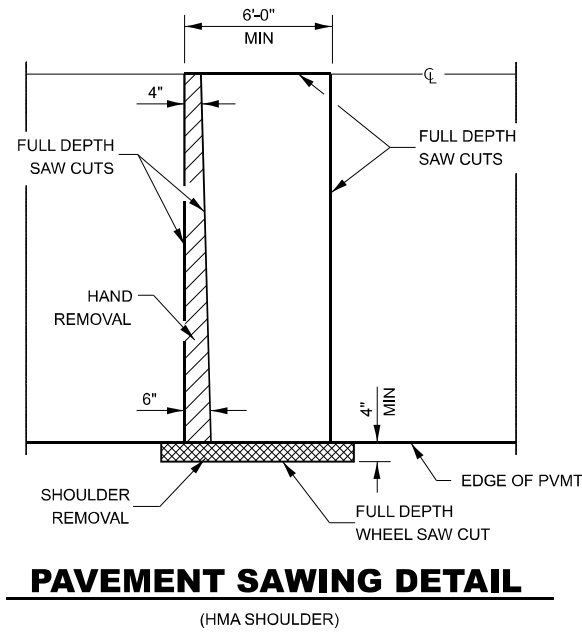
USER NAME = ronald.woodshank	DESIGNED - RW	REVISED -
	DRAWN - RW	REVISED -
PLOT SCALE = \$SCALE\$	CHECKED - YP	REVISED -
PLOT DATE = 2/16/2024	DATE - 1/13/2024	REVISED -

**STATE OF ILLINOIS
DEPARTMENT OF TRANSPORTATION**

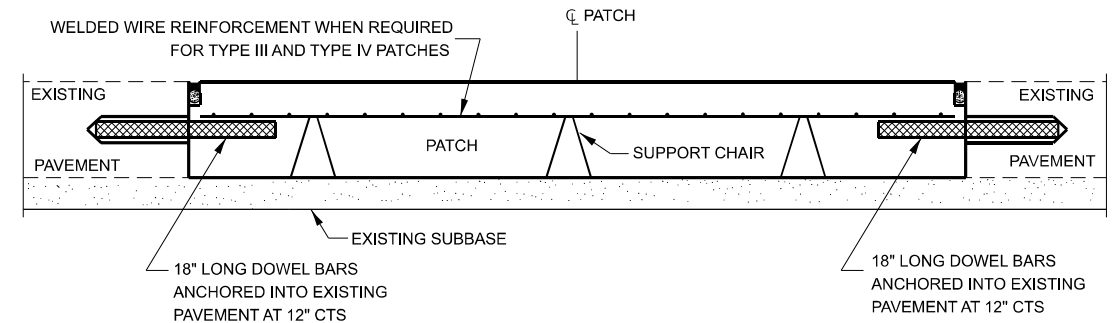
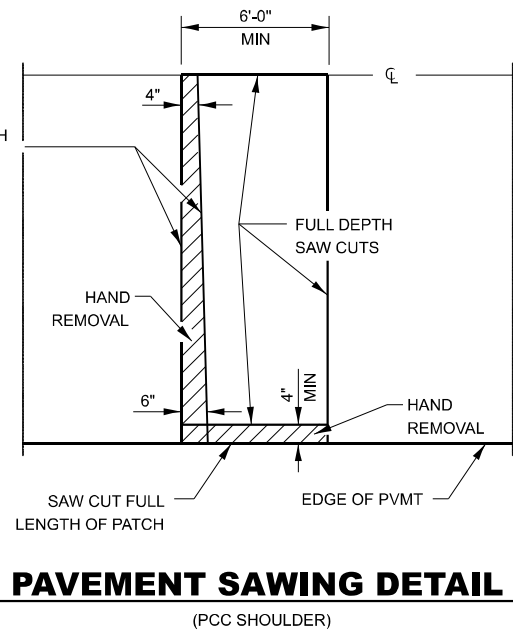
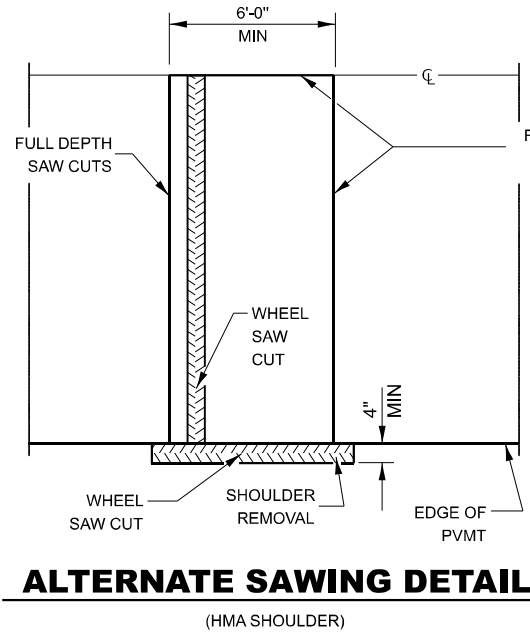
PROJECT LAYOUT

SCALE: SHEET 3 OF 3 SHEETS STA. TO STA.

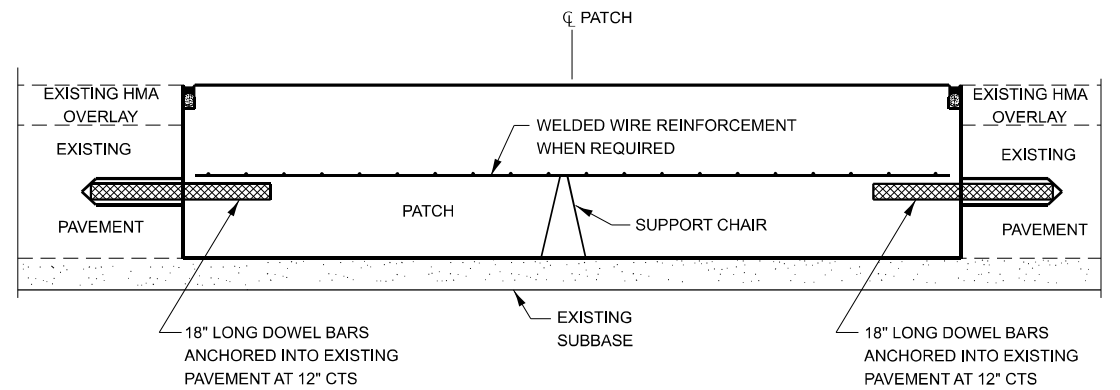
F.A.P. RTE.	SECTION	COUNTY	TOTAL SHEETS	SHEET NO.
796	(5,6)PP	FORD	10	7
CONTRACT NO. 66P13				
ILLINOIS FED. AID PROJECT				



12' WIDE LANES



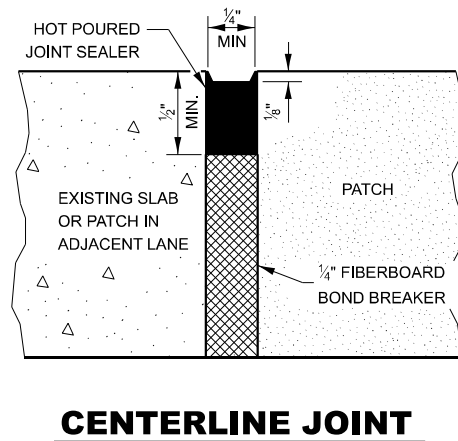
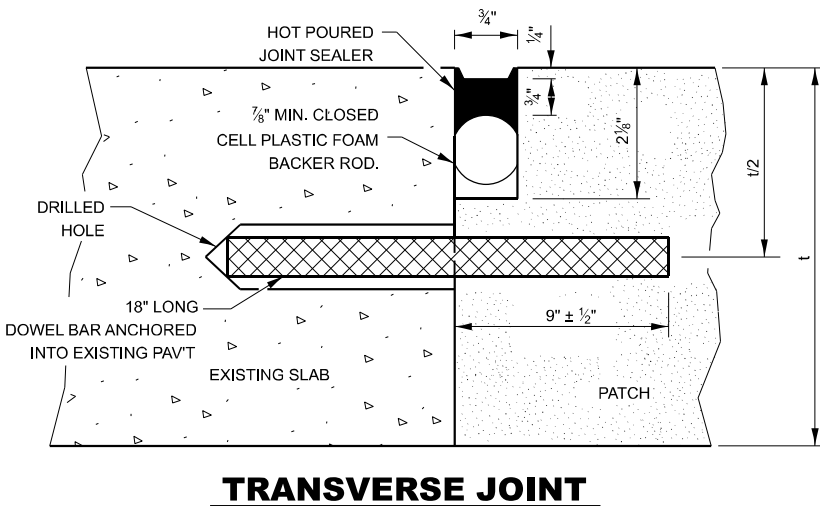
PATCHING WITHOUT HMA OVERLAY



PATCHING WITH HMA OVERLAY

GENERAL NOTES

THE TRANSVERSE JOINTS FOR CLASS B PATCHES SHALL ALIGN WITH JOINTS OR CRACKS IN THE ADJACENT LANE WHENEVER POSSIBLE.
SEE STANDARD 420701 FOR DETAILS OF PAVEMENT WELDED WIRE REINFORCEMENT.



CENTERLINE JOINT

DOWEL BAR TABLE		
PAVEMENT THICKNESS	DOWEL BAR DIAMETER	HOLE DIAMETER
8" OR GREATER	1 1/2"	1 5/8"
7" THRU 7.99"	1 1/4"	1 3/8"
LESS THAN 7"	1"	1 1/8"

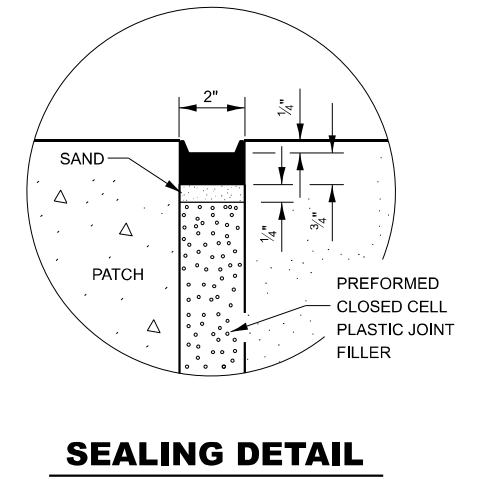
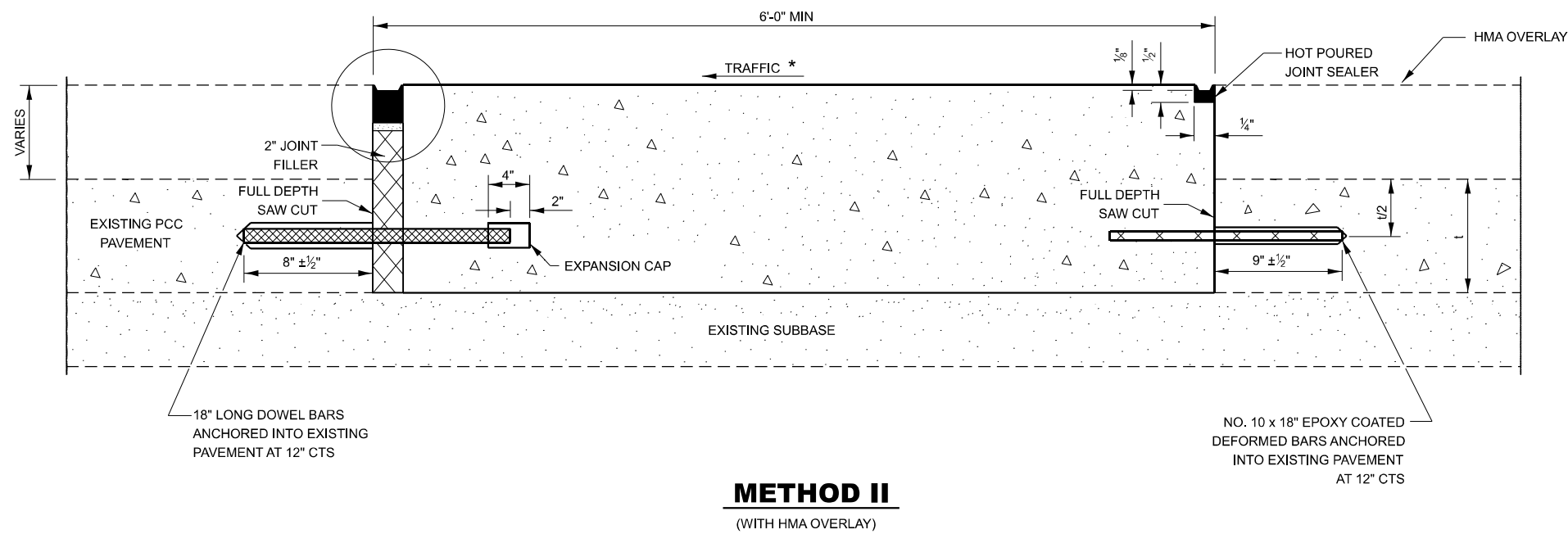
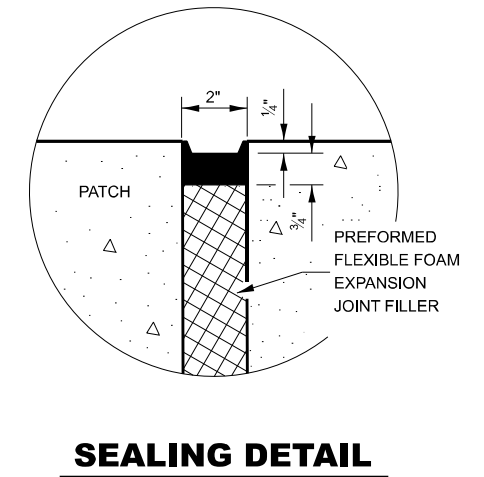
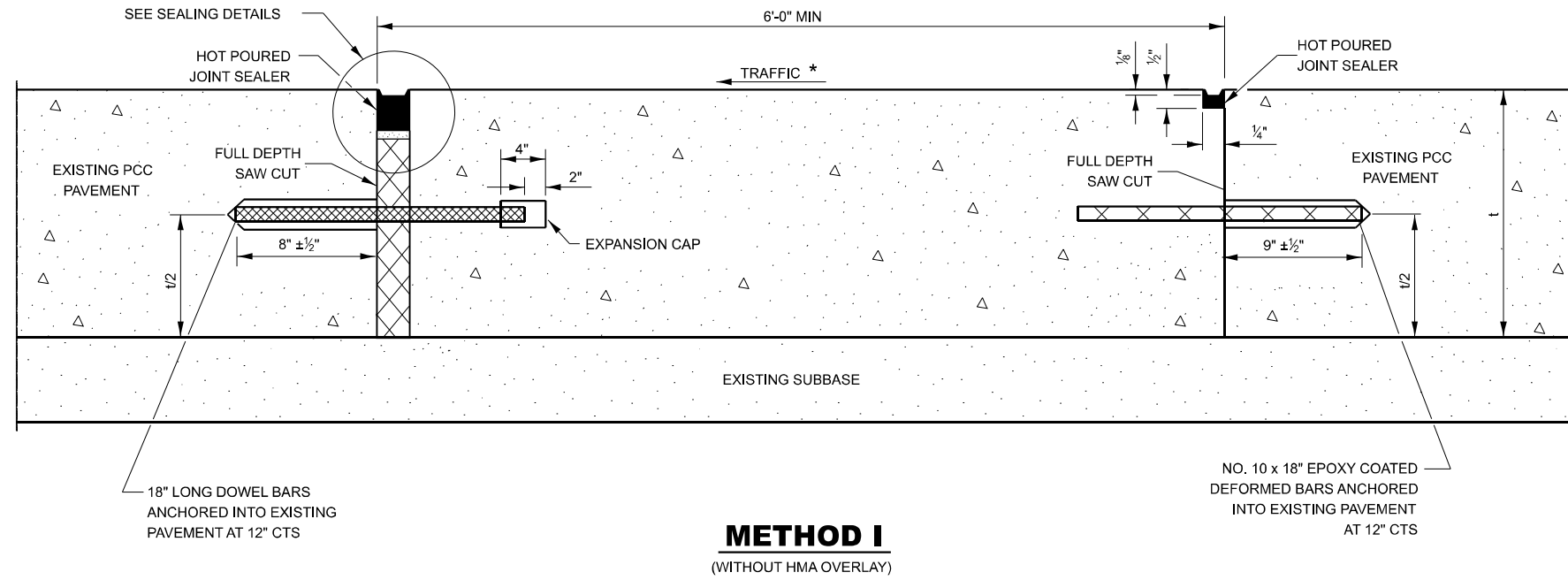
MODEL: Default
FILE NAME: C:\pwwork\woodshank\100966579\66P13.dgn

USER NAME = ronald.woodshank	DESIGNED - RW	REVISED -
PLOT SCALE = SCALES	DRAWN - RW	REVISED -
PLOT DATE = 2/16/2024	CHECKED - YP	REVISED -
	DATE - 1/13/2024	REVISED -

STATE OF ILLINOIS
DEPARTMENT OF TRANSPORTATION

CLASS B PATCHING DETAILS			
SCALE:	SHEET 1 OF 2 SHEETS	STA.	TO STA.

F.A.P. RTE. 796	SECTION (5,6)PP	COUNTY FORD	TOTAL SHEETS 10	SHEET NO. 8
CONTRACT NO. 66P13				
ILLINOIS FED. AID PROJECT				



NOTE

* WHEN RE-ESTABLISHING A TRANSVERSE EXPANSION JOINT ON A TWO-WAY ROAD, REVERSE THE ORIENTATION OF THE DOWEL BARS WITH RESPECT TO TRAFFIC FOR ONE OF THE PATCHES SUCH THAT THE JOINT WILL BE CONTINUOUS ACROSS BOTH LANES.

MODEL: Default
FILE NAME: c:\pwwork\woodshank\td0966579\66P13.dgn

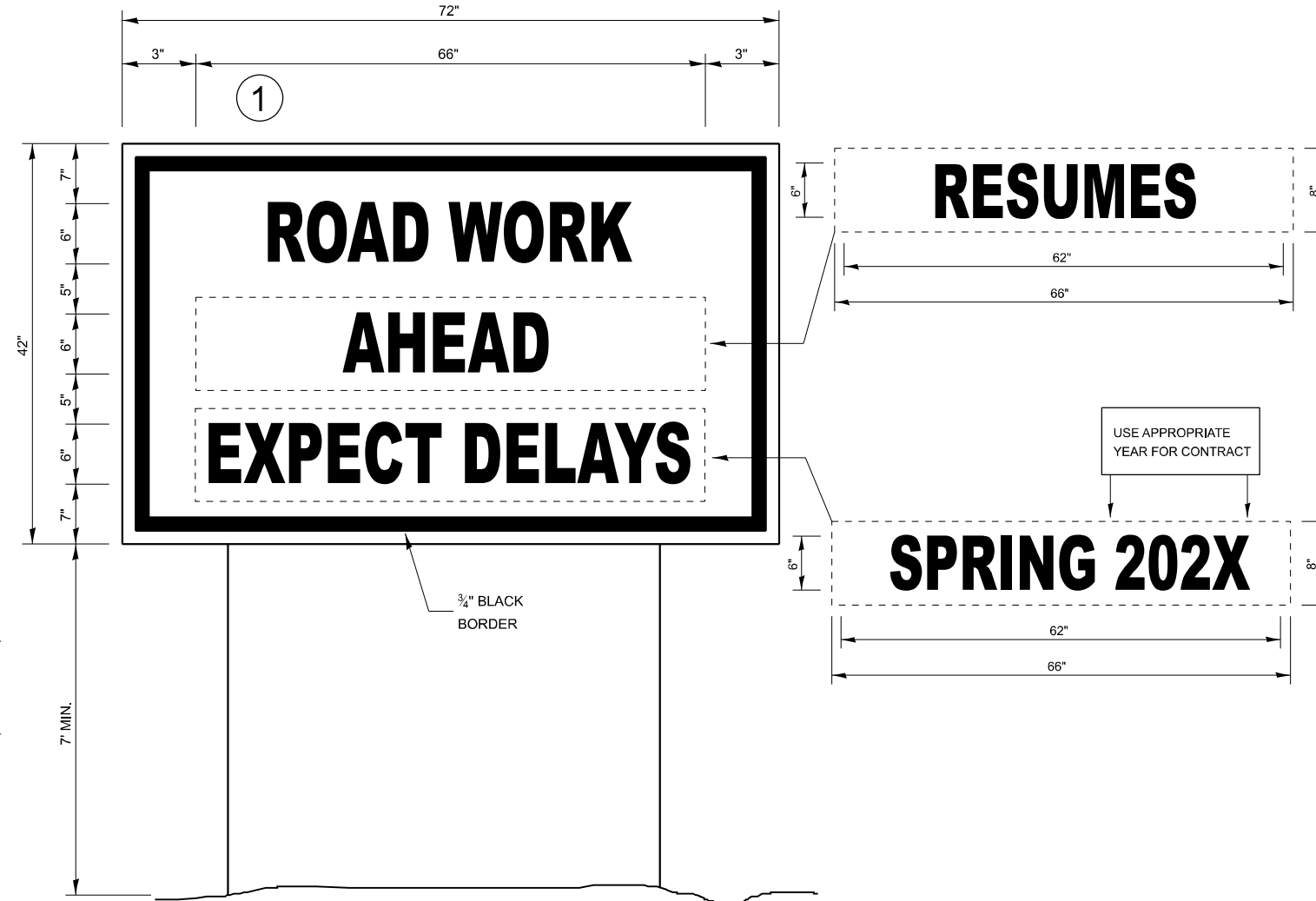
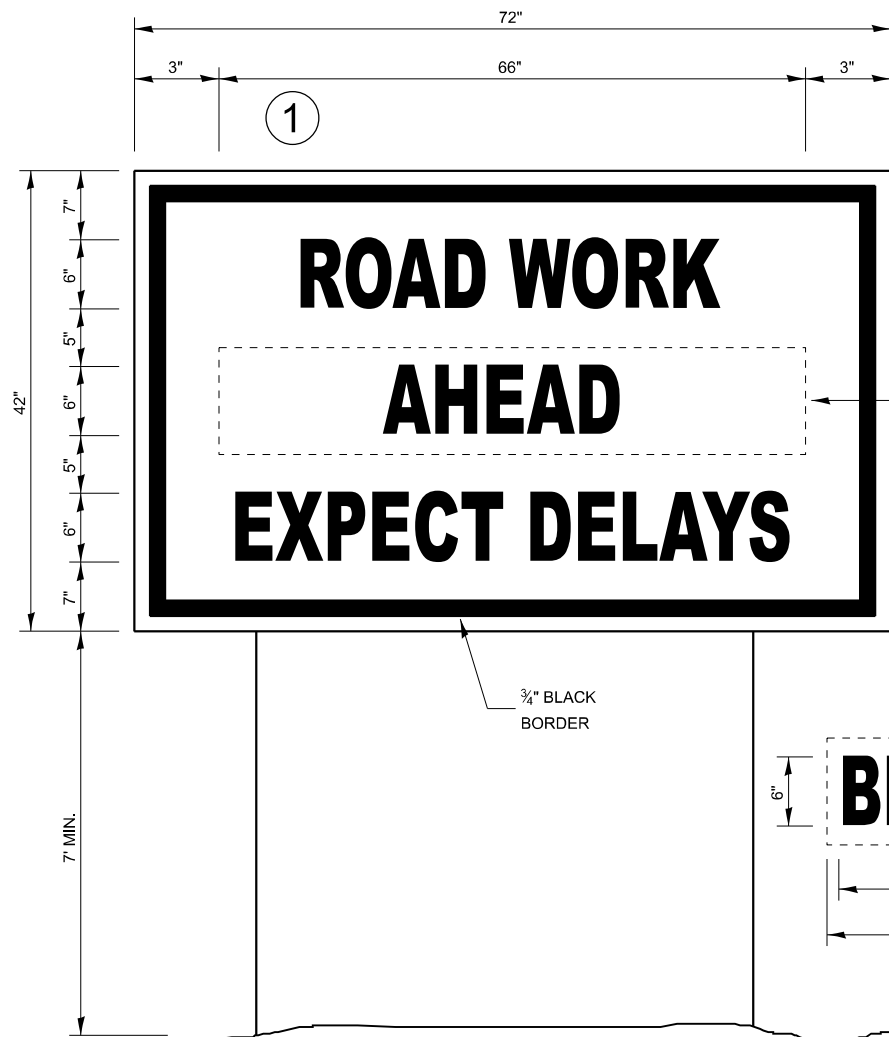
USER NAME = ronald.woodshank	DESIGNED - RW	REVISED -
DRAWN - RW	CHECKED - YP	REVISED -
PLOT SCALE = \$SCALE\$	DATE - 1/13/2024	REVISED -
PLOT DATE = 2/16/2024		

STATE OF ILLINOIS
DEPARTMENT OF TRANSPORTATION

CLASS B PATCHING DETAILS

SCALE: SHEET 2 OF 2 SHEETS STA. TO STA.

F.A.P. RTE.	SECTION	COUNTY	TOTAL SHEETS	SHEET NO.
796	(5,6)PP	FORD	10	9
CONTRACT NO. 66P13				
ILLINOIS FED. AID PROJECT				



TEMPORARY INFORMATION SIGNING

WINTER SHUT DOWN SIGNING

NOTES:

1. USE 6" D BLACK LETTERING ON FLOURESENT ORANGE BACKGROUND.
2. ERECT SIGNS AT LOCATIONS IN ADVANCE OF THE "ROAD CONSTRUCTION AHEAD" SIGNS AS DIRECTED BY THE ENGINEER.
3. ERECT SIGN 1 WITH INSTALLED PANEL 2 A MINIMUM OF ONE WEEK PRIOR TO THE START OF THE LANE CLOSURE.
4. REMOVE PANEL 2 ON THAT DATE.
5. SEE SPECIAL PROVISION "TEMPORARY INFORMATION SIGNING" FOR ADDITIONAL INFORMATION.
6. WILL BE PAID FOR PER SQ FT AS "TEMPORARY INFORMATION SIGNING". EACH SIGN = 21 SQ FT AND THE DATE PANEL 2 WILL NOT BE MEASURED SEPARATELY FOR PAYMENT.

MODEL: Default
FILE NAME: c:\pwwork\woodshank\100966579\66713.dgn

USER NAME = ronald.woodshank	DESIGNED - RW	REVISED -
	DRAWN - RW	REVISED -
PLOT SCALE = \$SCALE\$	CHECKED - YP	REVISED -
PLOT DATE = 2/16/2024	DATE - 1/13/2024	REVISED -

**STATE OF ILLINOIS
DEPARTMENT OF TRANSPORTATION**

TEMPORARY INFORMATION SIGNING			
SCALE:	SHEET 1 OF 1 SHEETS	STA.	TO STA.

F.A.P. RTE.	SECTION	COUNTY	TOTAL SHEETS	SHEET NO.
		FORD	10	10
ILLINOIS FED. AID PROJECT				