

STATE OF ILLINOIS  
DEPARTMENT OF TRANSPORTATION

F.A. RTE.	SECTION	COUNTY	TOTAL SHEETS	SHEET NO.
*	D3 CRACK SEALING 2025-01	BUREAU	18	1
		ILLINOIS	CONTRACT NO. 66P23	

**INDEX OF SHEETS**

- 1 COVER SHEET
- 2 GENERAL NOTES
- 3 SUMMARY OF QUANTITIES
- 4-12 TYPICAL SECTIONS
- 13-15 SCHEDULES
- 16 LINE DIAGRAM
- 17-18 DETAILS

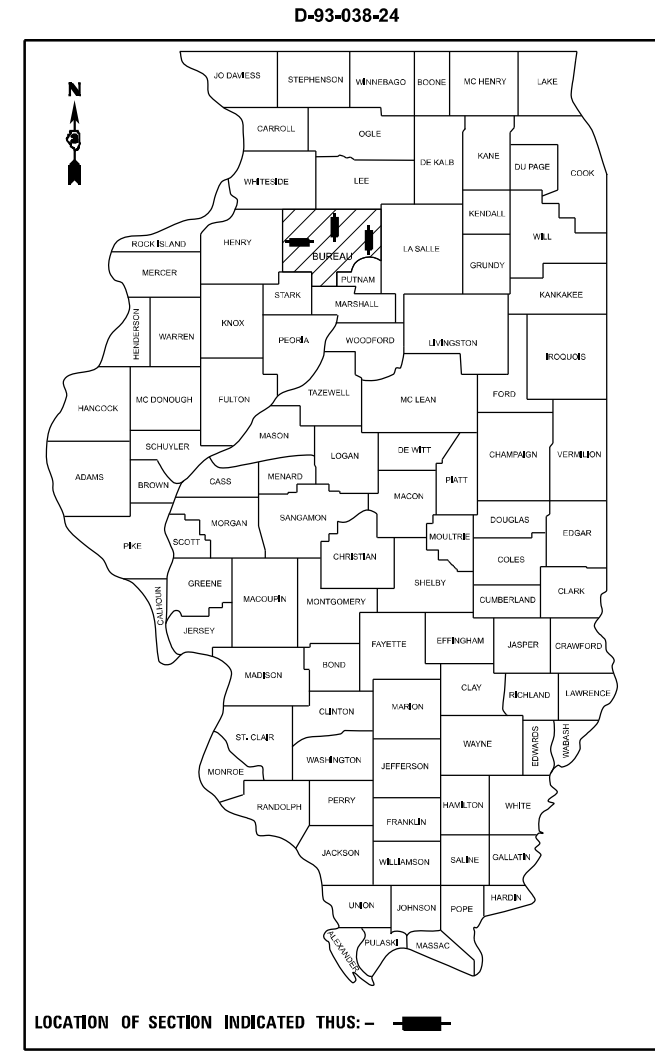
**LIST OF ILLINOIS DOT HIGHWAY STANDARDS**

- 001006 DECIMAL OF AN INCH AND OF A FOOT
- 701001-02 OFF-ROAD OPERATIONS 2L, 2W, MORE THAN 15' (4.5 m) AWAY
- 701006-05 OFF-ROAD OPERATIONS 2L, 2W, 15' (4.5 m) TO 24" (600 mm) FROM PAVEMENT EDGE
- 701301-04 LANE CLOSURE, 2L, 2W, SHORT TIME OPERATIONS
- 701306-04 LANE CLOSURE, 2L, 2W, SLOW MOVING OPERATIONS DAY ONLY, FOR SPEEDS ≥ 45 MPH
- 701311-03 LANE CLOSURE, 2L, 2W, MOVING OPERATIONS - DAY ONLY
- 701501-06 URBAN LANE CLOSURE, 2L, 2W, UNDIVIDED
- 701901-09 TRAFFIC CONTROL DEVICES

# PROPOSED HIGHWAY PLANS

VARIOUS ROUTES

## SECTION D3 CRACK SEALING 2025-01 PROJECT NHPP-STP-UXRG(854) CRACK & JOINT SEALING BUREAU COUNTY

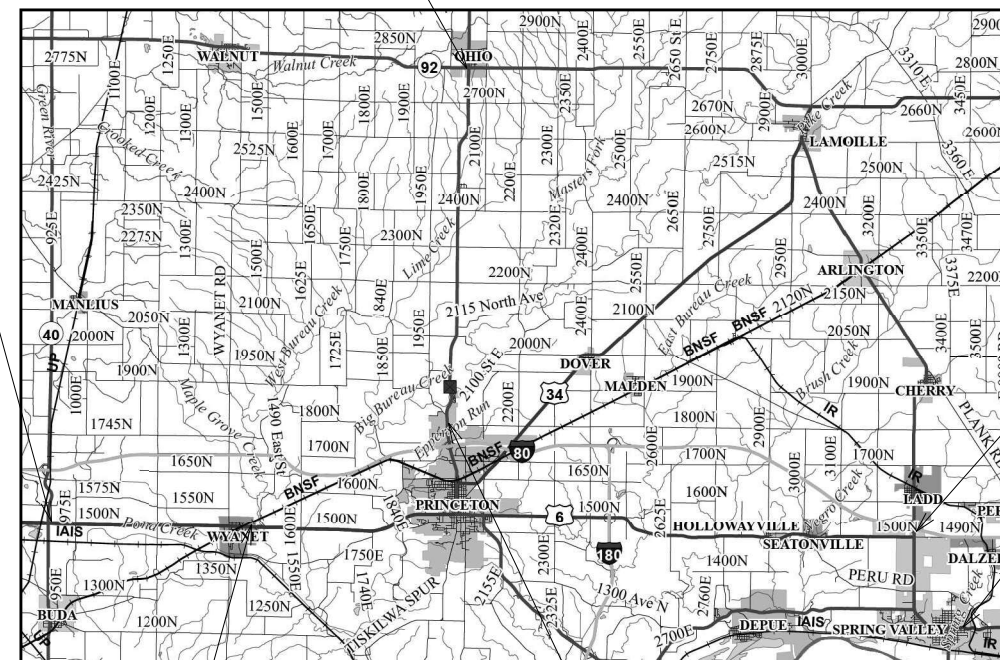


FUNCTIONAL CLASSIFICATION	IL 89/US 6	FUNCTIONAL CLASSIFICATION	OTHER PRINCIPAL ARTERIAL	IL 26
MINOR ARTERIAL	2021 ADT = 9750	OTHER PRINCIPAL ARTERIAL	2021 ADT = 3250	
PV=95.9% SU=03.3% MU=00.8%		PV=85.8% SU=03.4% MU=10.8%		

FUNCTIONAL CLASSIFICATION	US 6/US 34
OTHER PRINCIPAL ARTERIAL	2021 ADT = 2100
PV=83.7% SU=04.3% MU=2.0%	

C-93-074-24

IL 26  
IMPROVMENT BEGINS  
STA. 1051+67



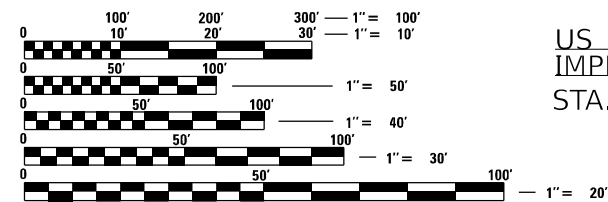
US 6 / US 34  
IMPROVMENT BEGINS  
STA. 1154+70

IL 89 / US 6  
IMPROVMENT BEGINS  
STA. 1645+28

IL 89 / US 6  
IMPROVMENT ENDS  
STA. 13+91

US 6 / US 34  
IMPROVMENT ENDS  
STA. 1459+00

IL 26  
IMPROVMENT ENDS  
STA. 1625+50



FULL SIZE PLANS HAVE BEEN PREPARED USING STANDARD ENGINEERING SCALES. REDUCED SIZED PLANS WILL NOT CONFORM TO STANDARD SCALES. IN MAKING MEASUREMENTS ON REDUCED PLANS, THE ABOVE SCALES MAY BE USED.

J.U.L.I.E.  
JOINT UTILITY LOCATION INFORMATION FOR EXCAVATION  
1-800-892-0123  
OR 811

PROJECT ENGINEER: JOE KANNEL, PE  
UNIT CHIEF: MOHAMED YOUSIF  
DISTRICT 3 NO. (815) 434-6131  
CONTRACT NO. 66P23

GROSS LENGTH = 102,877 FT. = 19.48 MILE  
NET LENGTH = 101,905 FT. = 19.30 MILE

STATE OF ILLINOIS  
DEPARTMENT OF TRANSPORTATION

SUBMITTED March 28, 2024

*Trisha Thompson*  
REGIONAL ENGINEER

May 10, 2024  
*[Signature]*  
ENGINEER OF DESIGN AND ENVIRONMENT

May 10, 2024  
*[Signature]*  
DIRECTOR OF HIGHWAYS PROJECT IMPLEMENTATION

PRINTED BY THE AUTHORITY  
OF THE STATE OF ILLINOIS

# GENERAL NOTES

THE INTENT OF THIS PROJECT IS TO ROUT AND SEAL WORKING TRANSVERSE CRACKS AND PRIMARY LONGITUDINAL CRACKS GREATER THAN 1/4" IN WIDTH. SECONDARY CRACKS GREATER THAN 1/4" IN WIDTH SHALL BE CLEANED AND SEALED.

THE CONTRACTOR SHALL NOT DISTURB THE EXISTING PAVEMENT MARKING OR RAISED REFLECTIVE PAVEMENT MARKERS. THE CONTRACTOR SHALL REPLACE AT NO ADDITIONAL COST TO THE DEPARTMENT, ANY PAVEMENT MARKING OR RAISED REFLECTIVE PAVEMENT MARKERS DAMAGED BY THEIR OPERATION.

THE ENGINEER SHALL DETERMINE WHETHER SECTIONS OF CRACKS SEALING SHOULD BE OMITTED IN ORDER TO AVOID DAMAGING THE PAVEMENT MARKING IN THOSE AREAS.

ALL PCC BRIDGE DECKS AND PAVEMENT SHALL BE OMITTED. BRIDGE DECKS WITH HMA OVERLAYS ARE TO BE SEALED ONLY (NO ROUTING).

THE FOLLOWING RATES OF APPLICATION HAVE BEEN USED IN CALCULATING PLAN QUANTITIES:

CRACK FILLING	0.5	POUND/FOOT
---------------	-----	------------

STATE OF ILLINOIS  
DEPARTMENT OF TRANSPORTATION  
DISTRICT THREE  
AS BUILT INFORMATION

\_\_\_\_\_  
SUPERVISING CONSTRUCTION FIELD ENGINEER

\_\_\_\_\_  
RESIDENT ENGINEER / TECHNICIAN

START & END DATES  
OF CONSTRUCTION:

INSPECTORS:

\_\_\_\_\_  
\_\_\_\_\_  
\_\_\_\_\_

MODEL: Default  
 FILE NAME: I:\projects\2024\66P23\CADD\Drawings\DOT Office\District 3\ORD Project\66P23\CADD\Drawings\66P23 Cover.dgn

USER NAME = boudie.shan	DESIGNED -	REVISED -
	DRAWN -	REVISED -
PLOT SCALE = \$SCALE\$	CHECKED -	REVISED -
PLOT DATE = 3/27/2024	DATE -	REVISED -

**STATE OF ILLINOIS  
DEPARTMENT OF TRANSPORTATION**

**GENERAL NOTES**

SCALE: SHEET OF SHEETS STA. TO STA.

F.A.P. RTE.	SECTION	COUNTY	TOTAL SHEETS	SHEET NO.
*	D3 CRACK SEALING 2025-01	BUREAU	18	2
CONTRACT NO. 66P23				
ILLINOIS FED. AID PROJECT				

IL89 / US 6      IL89 / US 6      IL 26      US 6 / US 34

CODE NO.	ITEM	UNIT	TOTAL QUANTITY	CONSTRUCTION CODE			
				NHPP STATE 20% : FED 80%	NHPP STATE 20% : FED 80%	NHPP STATE 20% : FED 80%	STP-RUR STATE 20% : FED 80%
				ROADWAY	ROADWAY	ROADWAY	ROADWAY
				0005 URBAN	0005 RURAL	0005 RURAL	0005 RURAL
45100100	CRACK ROUTING (PAVEMENT)	FOOT	149943	21688	20905	56508	50842
45100200	CRACK FILLING	POUND	74975	10845	10453	28256	25421
67100100	MOBILIZATION	L SUM	1	0.2	0.2	0.4	0.2
70100460	TRAFFIC CONTROL AND PROTECTION, STANDARD 701306	L SUM	1	0.2	0.2	0.4	0.2
70102620	TRAFFIC CONTROL AND PROTECTION, STANDARD 701501	L SUM	1	0.2	0.2	0.4	0.2
Z0030850	TEMPORARY INFORMATION SIGNING	SQ FT	126	21	21	42	42
Z0048665	RAILROAD PROTECTIVE LIABILITY INSURANCE	L SUM	1	0	0	0	1

MODEL: Default  
 FILE NAME: I:\projects\66P23\CADD\Drawings\DOT Office\District 3\ORD Project\66P23\CADD\Drawings\66P23 - Complete Sheets

USER NAME = Boudle,Shan	DESIGNED -	REVISED -
	DRAWN -	REVISED -
PLOT SCALE = \$SCALE\$	CHECKED -	REVISED -
PLOT DATE = 4/10/2024	DATE -	REVISED -

**STATE OF ILLINOIS  
DEPARTMENT OF TRANSPORTATION**

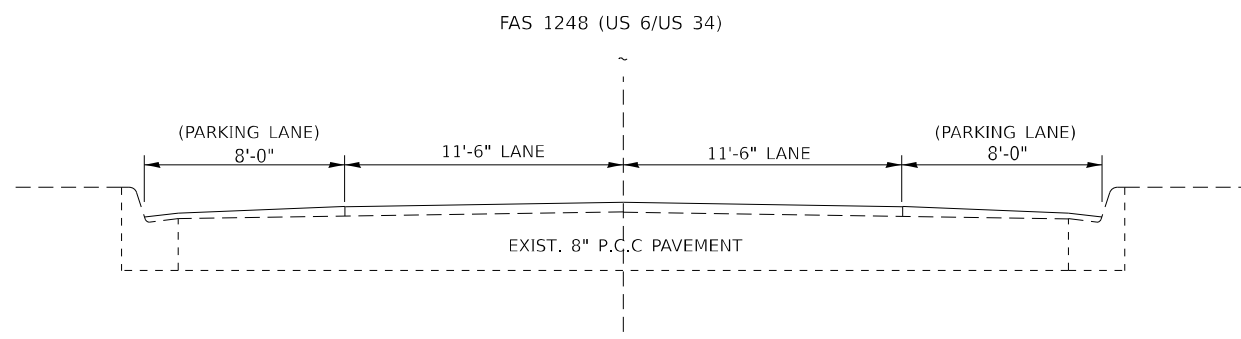
**SUMMARY OF QUANTITIES**

SCALE:      SHEET      OF      SHEETS      STA.      TO STA.

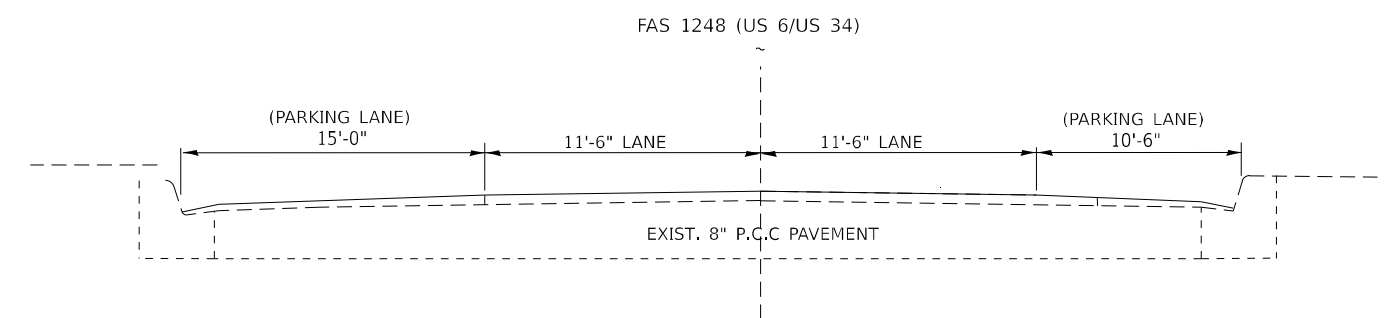
F.A. RTE.	SECTION	COUNTY	TOTAL SHEETS	SHEET NO.
*	D3 CRACK SEALING 2025-01	BUREAU	18	3
CONTRACT NO. 66P23				

ILLINOIS FED. AID PROJECT  
\* FAP 698, FAU 5605, FAS 1248, FAP 316



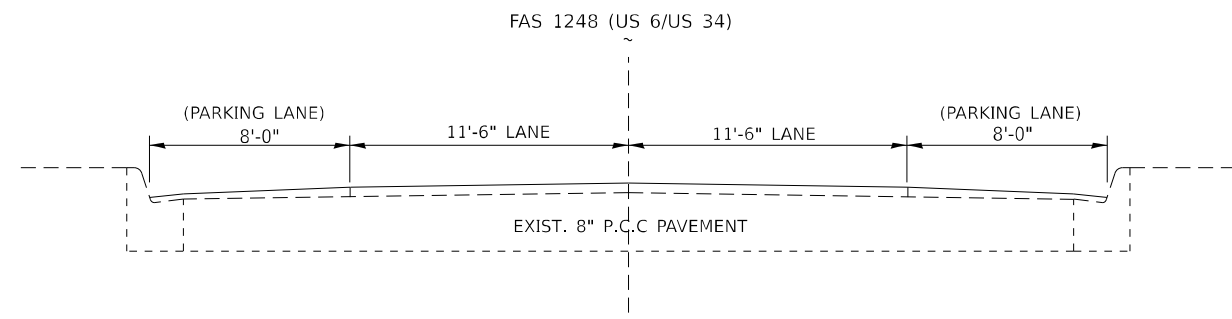


**US 6 / US 34 TYPICAL SECTION (4)**  
 STA. 1425+43 TO STA. 1431+40  
 (ARCH STREET TO LOCUST STREET)



**US 6 / US 34 TYPICAL SECTION (5)**  
 STA. 1431+40 TO STA. 1438+87  
 (LOCUST STREET TO WEST SIDE OF RAILROAD TRACKS)

RAILROAD STA. 1438+87 TO STA. 1439+42



**US 6 / US 34 TYPICAL SECTION (6)**  
 STA. 1439+42 TO STA. 1459+00  
 (EAST SIDE OF RAILROAD TRACKS TO EAST END OF JOB)

RAILROAD STA. 1438+87 TO STA. 1439+42

MODEL Default  
 FILE Name: \\paw\idb\paw\berkeley.com\PI\PIDOT\Documents\DOT\_0\_csa\District\_3\ORD Projects\66P23\CADD\66P23 Typical Sections.dgn

USER NAME = boudie.shan	DESIGNED -	REVISED -
	DRAWN -	REVISED -
PLOT SCALE = \$SCALE\$	CHECKED -	REVISED -
PLOT DATE = 3/27/2024	DATE -	REVISED -

**STATE OF ILLINOIS  
 DEPARTMENT OF TRANSPORTATION**

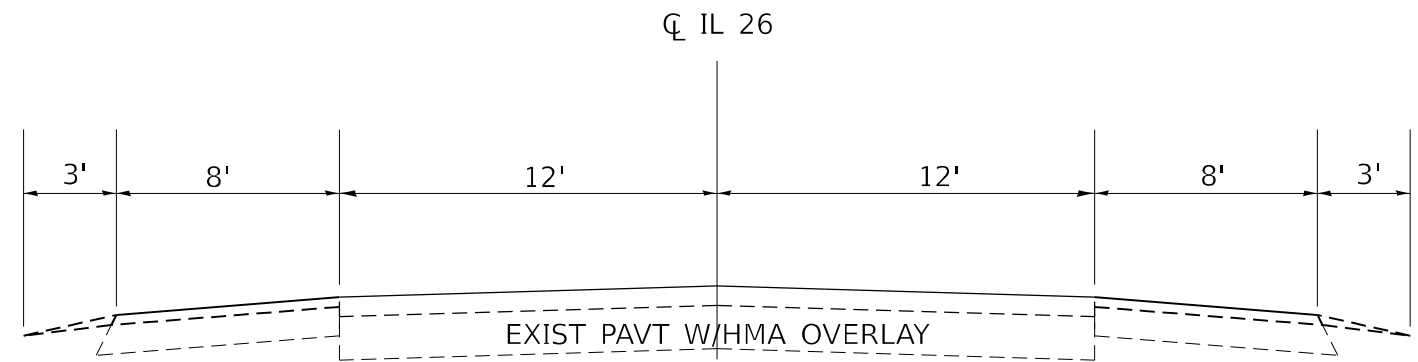
**US 6 / US 34 TYPICAL SECTIONS**

SCALE: SHEET 1 OF 6 SHEETS STA. TO STA.

F.A. RTE.	SECTION	COUNTY	TOTAL SHEETS	SHEET NO.
*	D3 CRACK SEALING 2025-01	BUREAU	18	5
			CONTRACT NO. 66P23	
ILLINOIS FED. AID PROJECT				

\* FAP 698, FAU 5605, FAS 1248, FAP 316

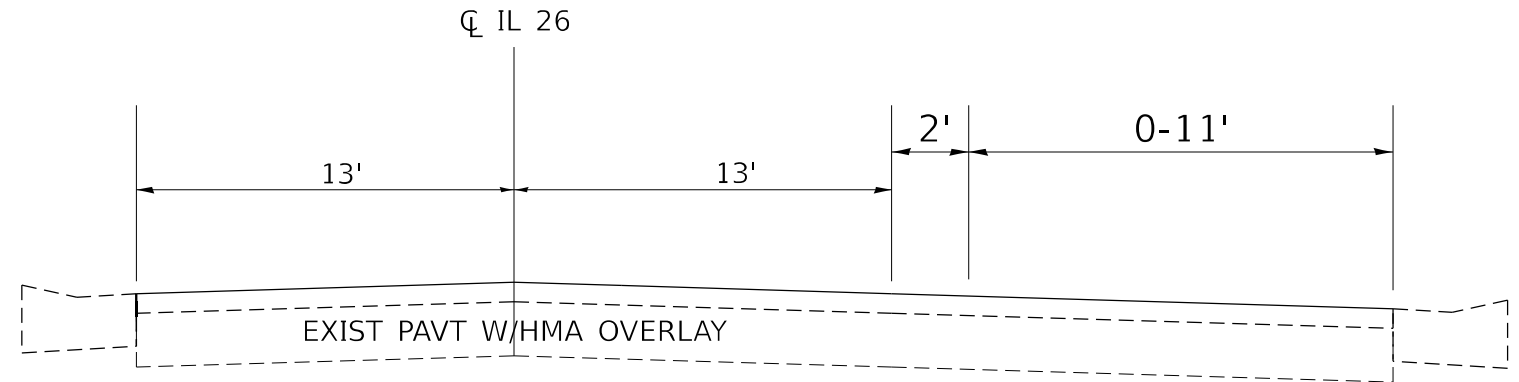




**IL 26 TYPICAL SECTION (3)**

STA. 1116+00 TO STA. 1130+54  
 STA. 1136+84 TO STA. 1212+06  
 STA. 1297+62 TO STA. 1302+96

STA. EQ. 1178+09 BK = STA. 1183+48 AH



**IL 26 TYPICAL SECTION (4)**

STA. 1302+96 TO STA. 1311+76

MODEL: Default  
 FILE NAME: j:\w\1160-cpw\delm\by.com:PWIDOT\Documents\DOT 0 ce\Fb\1161 30RD Projects\1366P23\CAD\1161\1366P23 Typical Sections.dgn

USER NAME = boudie.shan	DESIGNED -	REVISED -
	DRAWN -	REVISED -
PLOT SCALE = 5SCALES	CHECKED -	REVISED -
PLOT DATE = 3/27/2024	DATE -	REVISED -

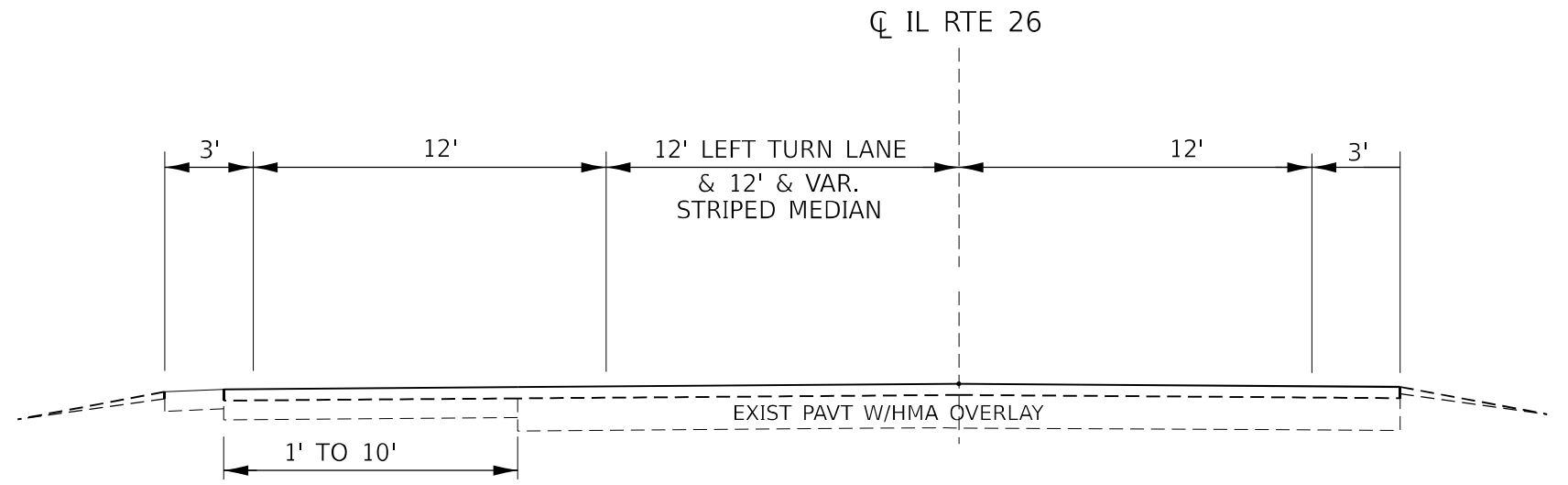
**STATE OF ILLINOIS  
 DEPARTMENT OF TRANSPORTATION**

**IL 26 TYPICAL SECTIONS**

SCALE: SHEET 1 OF 6 SHEETS STA. TO STA.

F.A. RTE.	SECTION	COUNTY	TOTAL SHEETS	SHEET NO.
*	D3 CRACK SEALING 2025-01	BUREAU	18	7
CONTRACT NO. 66P23				
ILLINOIS FED. AID PROJECT				

\* FAP 698, FAU 5605, FAS 1248, FAP 316



**IL 26 TYPICAL SECTION (5)**  
STA. 1493+25 TO STA. 1510+10

MODEL: Default  
FILE NAME: \\w:\illinois\sw\as\m\by.com\PIV\DOT\Documents\DOT 0 ces\2\tr\ct 30\RD Projects\366P23\CAD\Drawings\366P23 Typical Sections.dgn

USER NAME = boudie.shan	DESIGNED -	REVISED -
	DRAWN -	REVISED -
PLOT SCALE = 5/8"=1'	CHECKED -	REVISED -
PLOT DATE = 3/27/2024	DATE -	REVISED -

**STATE OF ILLINOIS  
DEPARTMENT OF TRANSPORTATION**

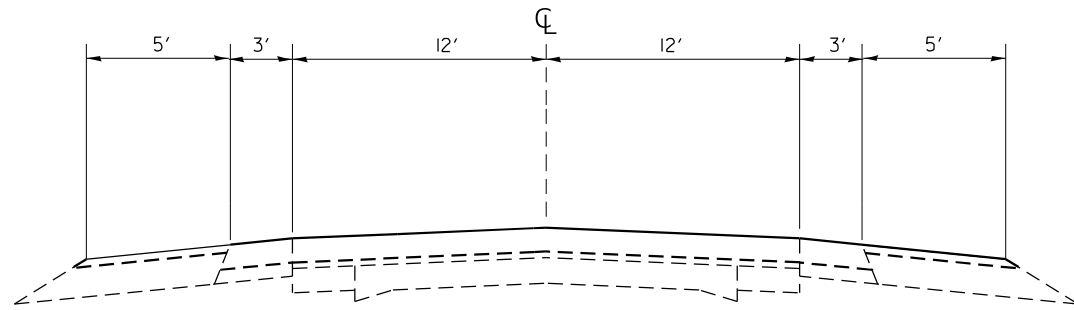
**IL 26 TYPICAL SECTIONS**

SCALE:      SHEET 1      OF 6      SHEETS      STA.      TO STA.

F.A. RTE.	SECTION	COUNTY	TOTAL SHEETS	SHEET NO.
*	D3 CRACK SEALING 2025-01	BUREAU	18	8
CONTRACT NO. 66P23				
ILLINOIS FED. AID PROJECT				

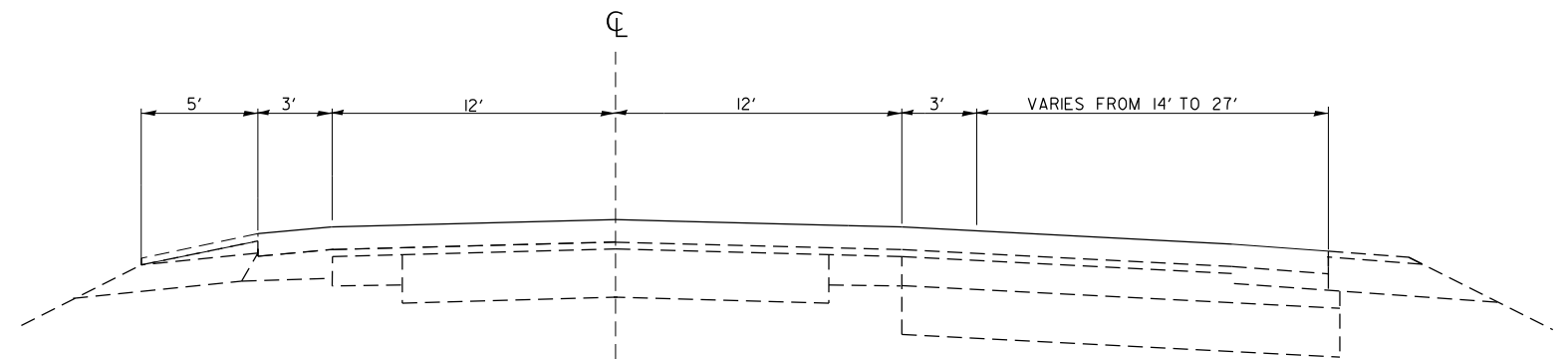
\* FAP 698, FAU 5605, FAS 1248, FAP 316





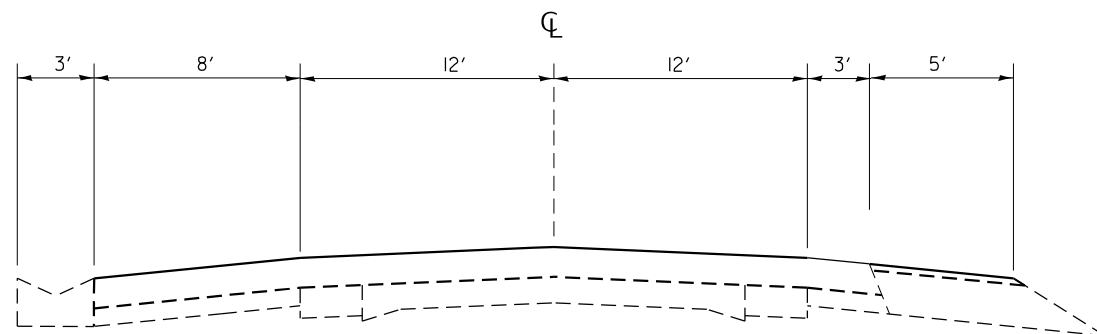
**IL 89 / US 6 TYPICAL SECTION (1)**

STA. 1645+29 TO STA. 1675+07  
 STA. 1710+96 TO STA. 1736+65



**IL 89 / US 6 TYPICAL SECTION (2)**

STA. 1675+07 TO STA. 1710+96



**IL 89 / US 6 TYPICAL SECTION (3)**

STA. 1736+65 TO STA. 1748+03

MODEL: Default  
 FILE NAME: \\w:\illinois-pw-jambly.com\PIWDOT\Documents\DOT D ces\041414 308SD Projects\0366P23\CAD\Draw\0366P23 Typical Sections.dgn

USER NAME = boudie.shan	DESIGNED -	REVISED -
	DRAWN -	REVISED -
PLOT SCALE = 5SCALES	CHECKED -	REVISED -
PLOT DATE = 3/27/2024	DATE -	REVISED -

**STATE OF ILLINOIS  
 DEPARTMENT OF TRANSPORTATION**

**IL 89 / US 6 TYPICAL SECTIONS**

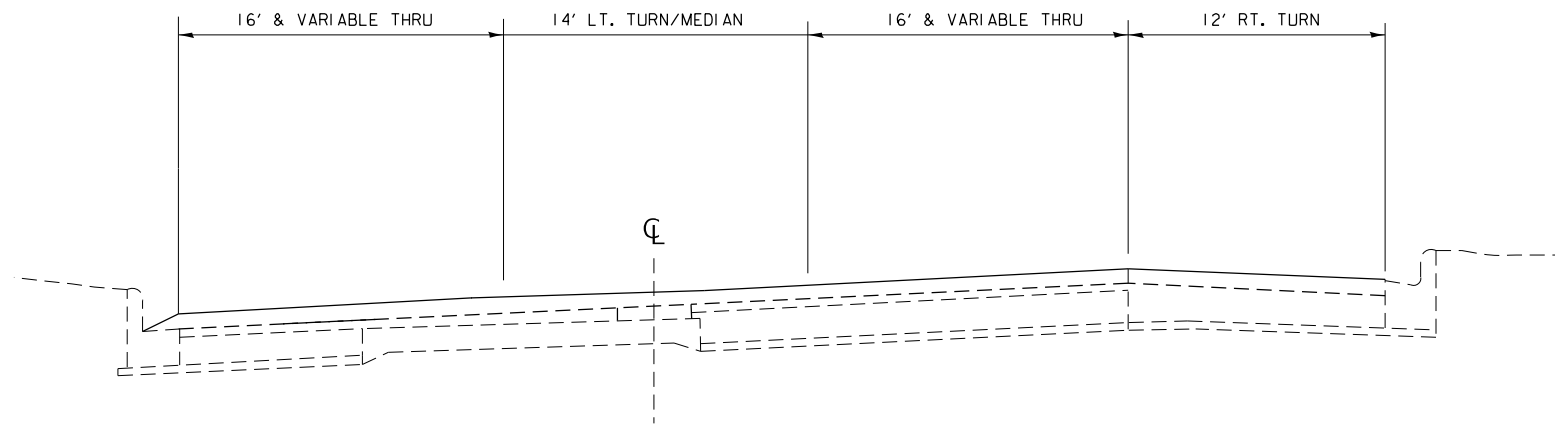
SCALE: SHEET 1 OF 6 SHEETS STA. TO STA.

F.A. RTE.	SECTION	COUNTY	TOTAL SHEETS	SHEET NO.
*	D3 CRACK SEALING 2025-01	BUREAU	18	9
CONTRACT NO. 66P23				
ILLINOIS FED. AID PROJECT				

\* FAP 698, FAU 5605, FAS 1248, FAP 316







**US 6 TYPICAL SECTION (10)**  
 STA. 9+28.00 TO STA. 13+91

MODEL: Default  
 FILE NAME: \\s:\illinois-pw\dwg\mllby.com\PW\DOT\Documents\DOT D ces\Bsr\rlt 308RD Projects\0366P23\CAD\Drawn\0366P23 Typical Sections.dgn

USER NAME = boudie.snan	DESIGNED -	REVISED -
	DRAWN -	REVISED -
PLOT SCALE = \$SCALE\$	CHECKED -	REVISED -
PLOT DATE = 3/27/2024	DATE -	REVISED -

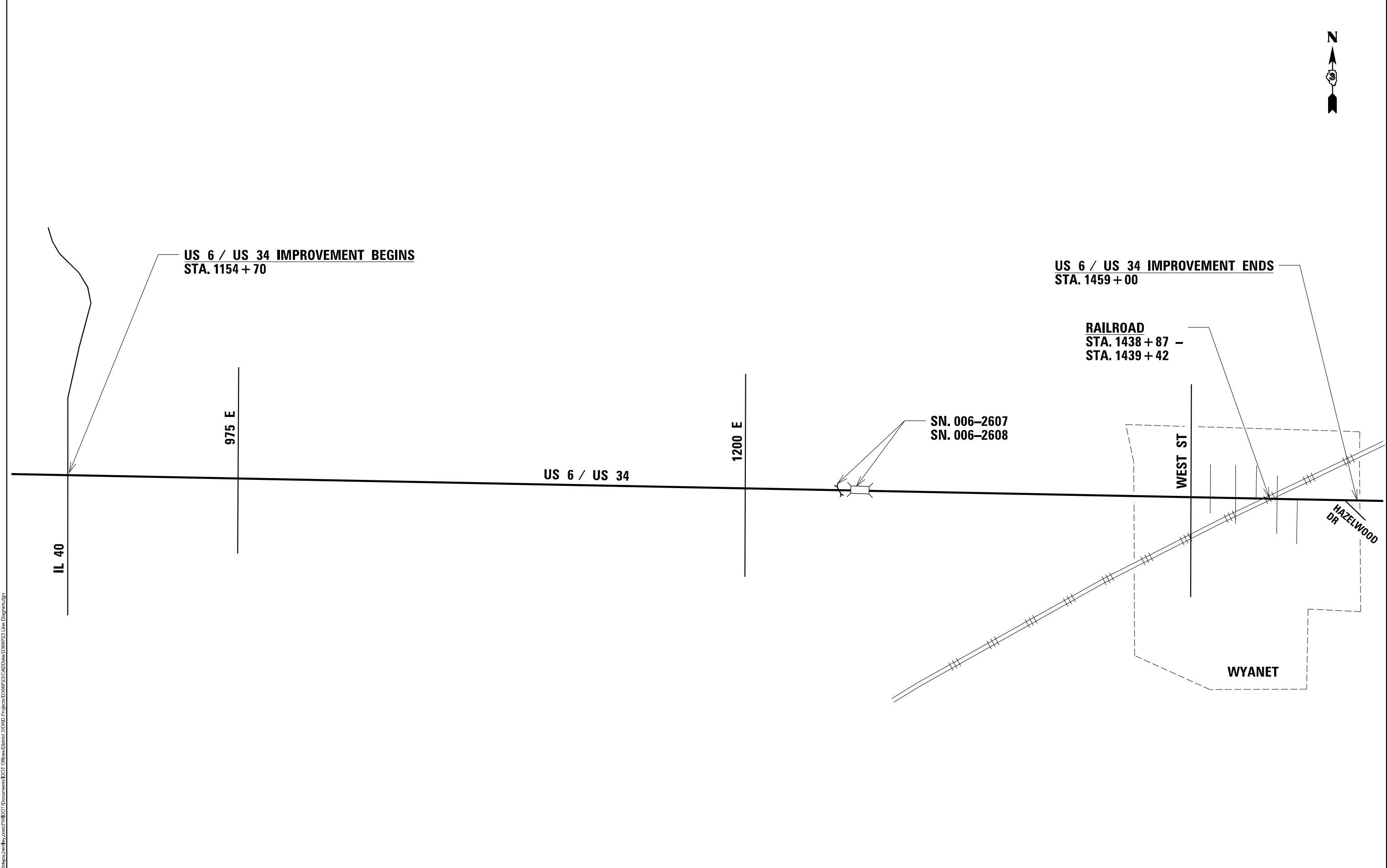
**STATE OF ILLINOIS  
 DEPARTMENT OF TRANSPORTATION**

**IL 89 /US 6 TYPICAL SECTIONS**

SCALE: SHEET 4 OF 6 SHEETS STA. TO STA.

F.A. RTE.	SECTION	COUNTY	TOTAL SHEETS	SHEET NO.
*	D3 CRACK SEALING 2025-01	BUREAU	18	12
CONTRACT NO. 66P23				
ILLINOIS FED. AID PROJECT				

\* FAP 688, FAU 5605, FAS 1248, FAP 316



**US 6 / US 34 IMPROVEMENT BEGINS  
STA. 1154 + 70**

**US 6 / US 34 IMPROVEMENT ENDS  
STA. 1459 + 00**

**RAILROAD  
STA. 1438 + 87 -  
STA. 1439 + 42**

**SN. 006-2607  
SN. 006-2608**

**US 6 / US 34**

**IL 40**

**975 E**

**1200 E**

**WEST ST**

**HAZELWOOD  
DR**

**WYANET**

MODEL: Detail  
 FILE NAME: I:\Projects\2024\66P23\CAD\Drawings\66P23 Line Diagram.dgn

USER NAME = boudle.shan	DESIGNED -	REVISED -
DRAWN -	REVISED -	
PLOT SCALE = \$SCALE\$	CHECKED -	REVISED -
PLOT DATE = 3/27/2024	DATE -	REVISED -

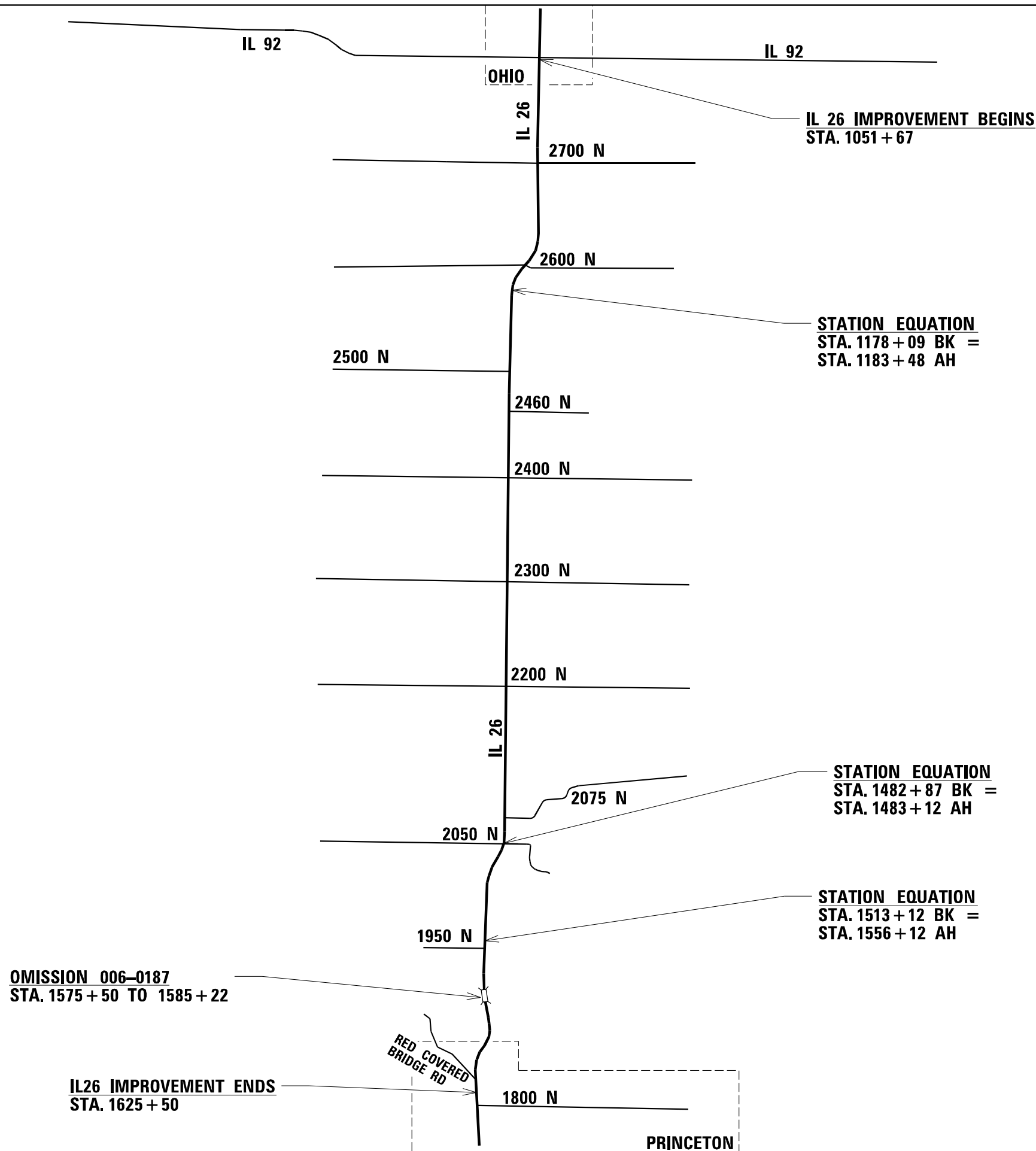
**STATE OF ILLINOIS  
DEPARTMENT OF TRANSPORTATION**

**US 6 / US 34 LINE DIAGRAM**

SCALE: SHEET OF SHEETS STA. TO STA.

F.A. RTE.	SECTION	COUNTY	TOTAL SHEETS	SHEET NO.
*	D3 CRACK SEALING 2025-01	BUREAU	18	13
CONTRACT NO. 66P23				
ILLINOIS FED. AID PROJECT				

\* FAP 698, FAU 5605, FAS 1248, FAP 316



MODEL: Default  
 FILE NAME: \\pwwildsdcv.kim.com\FM\DOT\Documents\DOT Office\District 3\CRD Projects\366P23\CADD\366P23 Line Diagram.dgn

USER NAME = boulie,shen	DESIGNED -	REVISED -
DRAWN -	REVISED -	
PLOT SCALE = \$SCALE\$	CHECKED -	REVISED -
PLOT DATE = 3/27/2024	DATE -	REVISED -

**STATE OF ILLINOIS**  
**DEPARTMENT OF TRANSPORTATION**

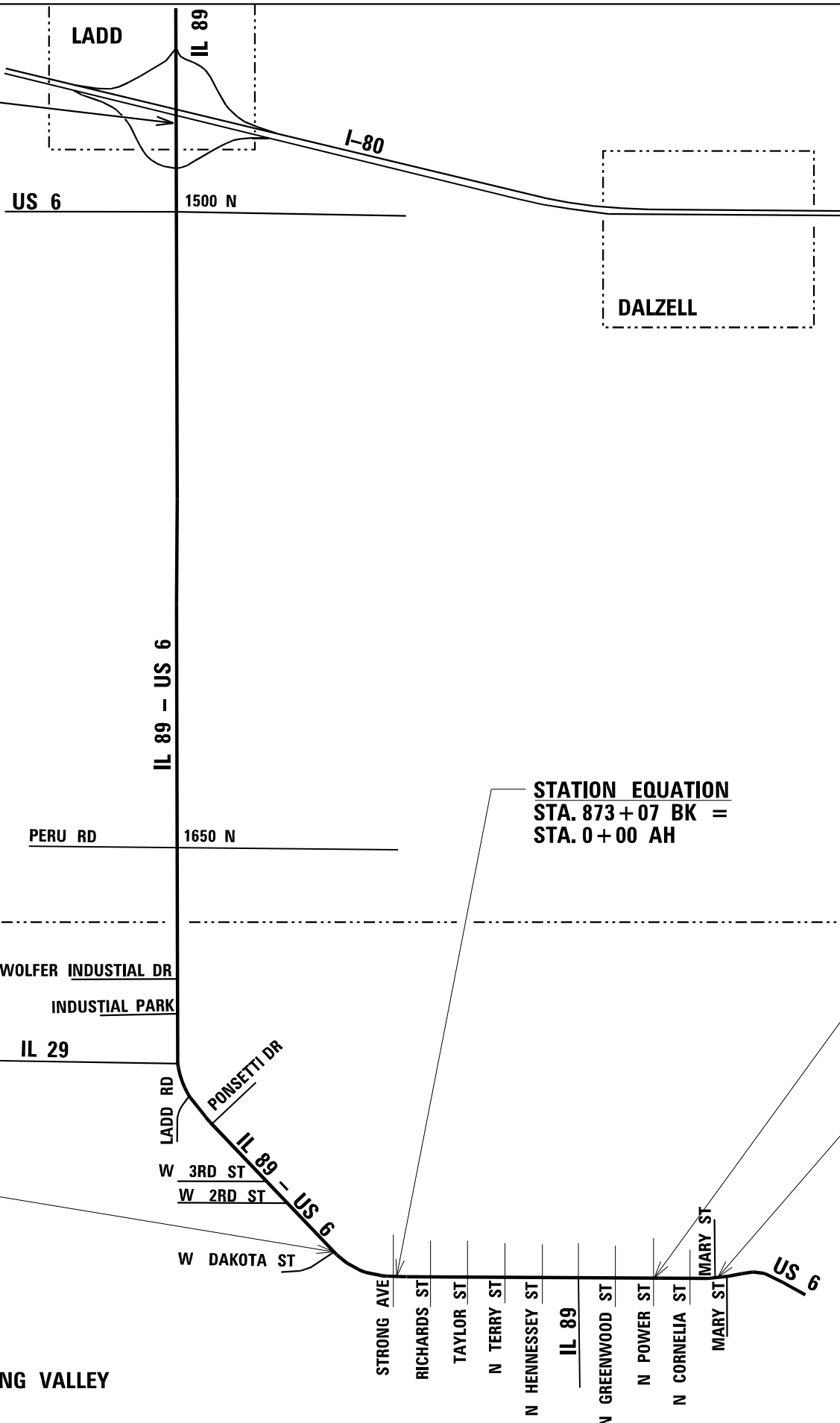
**IL 26 LINE DIAGRAM**  
 SCALE:      SHEET    OF    SHEETS    STA.            TO STA.

F.A. RTE.	SECTION	COUNTY	TOTAL SHEETS	SHEET NO.
*	D3 CRACK SEALING 2025-01	BUREAU	18	14
CONTRACT NO. 66P23				
ILLINOIS FED. AID PROJECT				

\* FAP 698, FAU 5605, FAS 1248, FAP 316



**IL 89 / US 6 IMPROVEMENT BEGINS  
STA. 1645 + 28**



**STATION EQUATION  
STA. 1793 + 39 BK =  
STA. 863 + 81 AH**

**STATION EQUATION  
STA. 873 + 07 BK =  
STA. 0 + 00 AH**

**STATION EQUATION  
STA. 37 + 00 BK =  
STA. 8 + 99 AH**

**US 6 IMPROVEMENT ENDS  
STA. 13 + 91**

MODEL: Default  
 FILE NAME: P:\bids\p23\mfx\com\PNW\DOT\Documents\DOT Office\District 3\CRD Project\388P23\CAD\Data\388P23 Line Diagram.dgn

USER NAME = boudle.shan	DESIGNED -	REVISED -
	DRAWN -	REVISED -
PLOT SCALE = \$\$SCALE\$	CHECKED -	REVISED -
PLOT DATE = 3/27/2024	DATE -	REVISED -

**STATE OF ILLINOIS  
DEPARTMENT OF TRANSPORTATION**

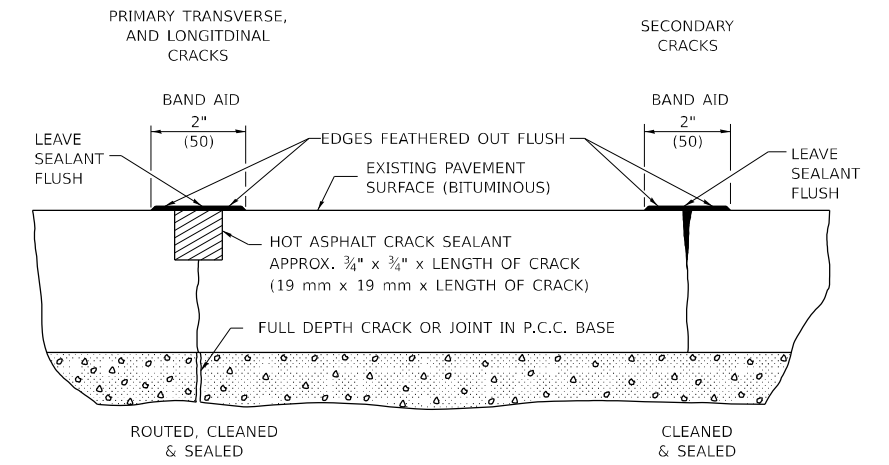
**IL 89 / US 6 LINE DIAGRAM**

SCALE: SHEET OF SHEETS STA. TO STA.

F.A. RTE.	SECTION	COUNTY	TOTAL SHEETS	SHEET NO.
*	D3 CRACK SEALING 2025-01	BUREAU	18	15
CONTRACT NO. 66P23				
ILLINOIS FED. AID PROJECT				







**CRACK SEALING HMA PAVEMENT DETAIL**

MODEL: Detail  
 FILE NAME: P:\bids\pavement\pavement\DOT Documents\DOT Office\Detail 3\CRD Project\038P23\CAD\Detail\038P23 Detail.dgn

USER NAME = boudle.shan	DESIGNED -	REVISED -
	DRAWN -	REVISED -
PLOT SCALE = \$\$SCALE\$	CHECKED -	REVISED -
PLOT DATE = 3/27/2024	DATE -	REVISED -

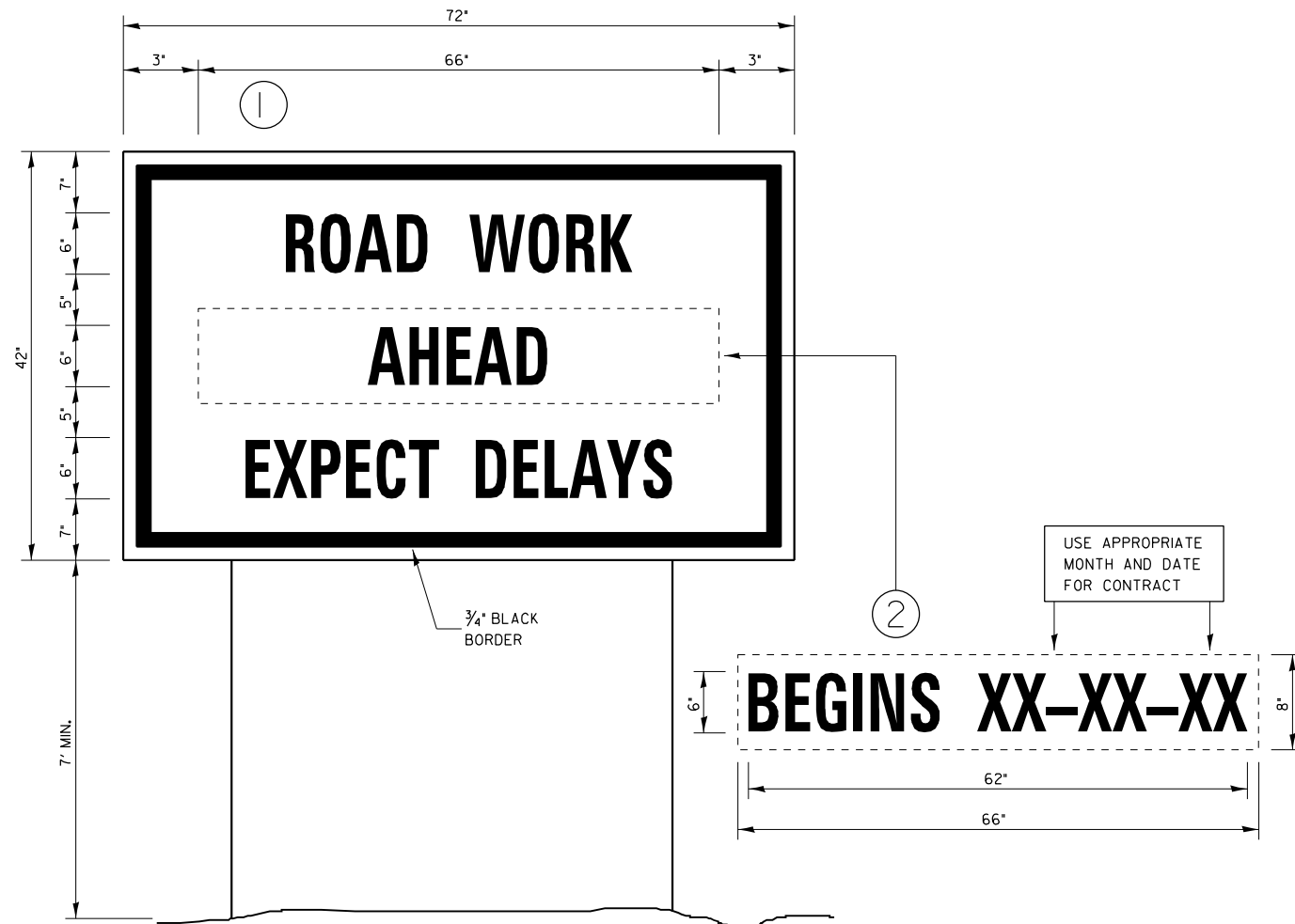
**STATE OF ILLINOIS**  
**DEPARTMENT OF TRANSPORTATION**

**DETAILS**

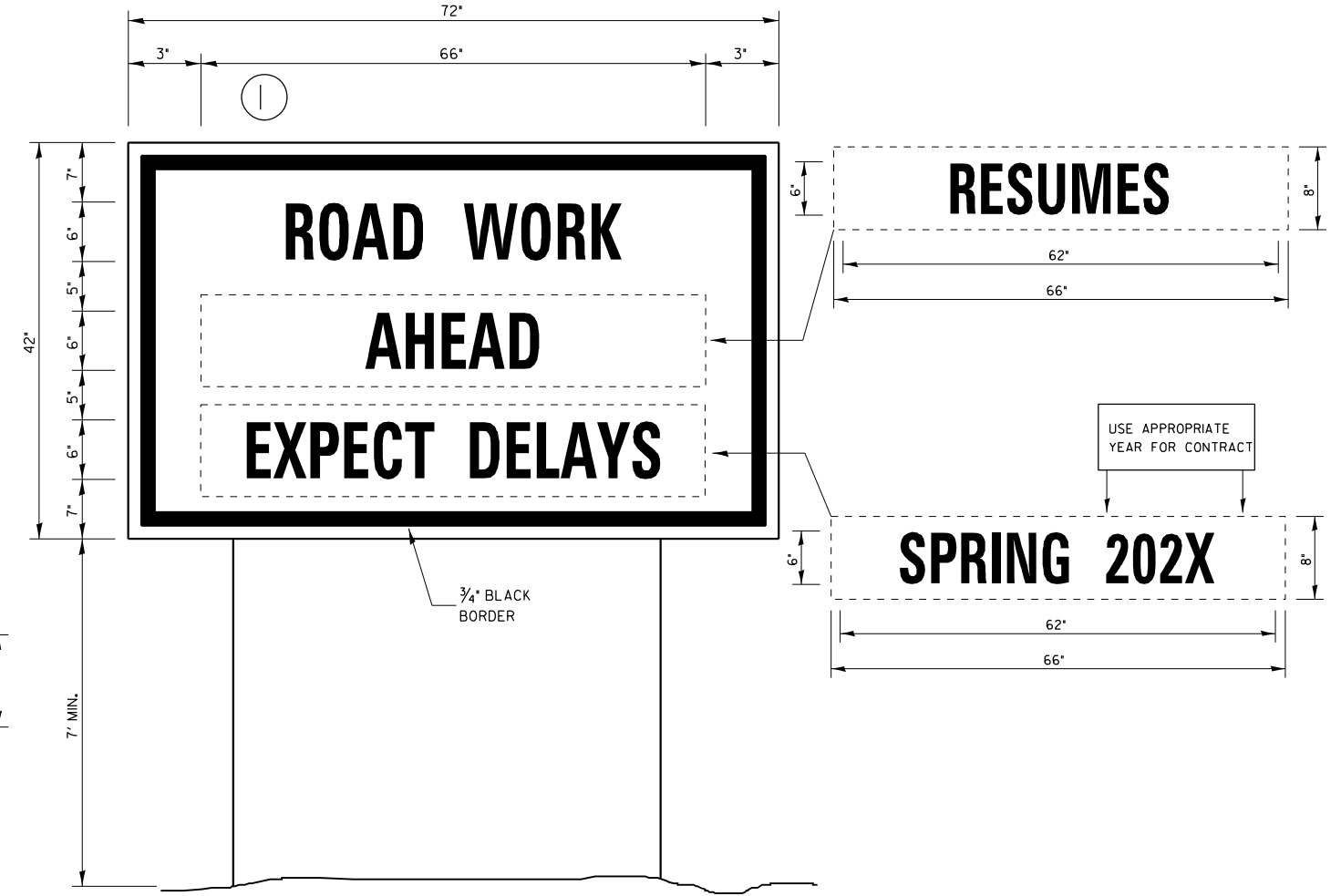
SCALE: SHEET OF SHEETS STA. TO STA.

F.A. RTE.	SECTION	COUNTY	TOTAL SHEETS	SHEET NO.
*	D3 CRACK SEALING 2025-01	BUREAU	18	17
CONTRACT NO. 66P23				
ILLINOIS FED. AID PROJECT				

\* FAP 698, FAU 5605, FAS 1248, FAP 316



**TEMPORARY INFORMATION SIGNING**



**WINTER SHUT DOWN SIGNING**

**NOTES:**

1. USE 6" D BLACK LETTERING ON FLOURESENT ORANGE BACKGROUND.
2. ERECT SIGNS AT LOCATIONS IN ADVANCE OF THE "ROAD CONSTRUCTION AHEAD" SIGNS AS DIRECTED BY THE ENGINEER.
3. ERECT SIGN ① WITH INSTALLED PANEL 2 ② MINIMUM OF ONE WEEK PRIOR TO THE START OF THE LANE CLOSURE.
4. REMOVE PANEL ② ON THAT DATE.
5. SEE SPECIAL PROVISION "TEMPORARY INFORMATION SIGNING" FOR ADDITIONAL INFORMATION.
6. WILL BE PAID FOR PER SO FT AS "TEMPORARY INFORMATION SIGNING". EACH SIGN = 2150 FT AND THE DATE PANEL 2 ② WILL NOT BE MEASURED SEPARATELY FOR PAYMENT.

MODEL: Detail  
FILE NAME: j:\work\p23\2025\2025\DOT\Office\Detail\3\ORD Project\3892\3892\CAD\Detail\3892\Detail.dgn

USER NAME = boudie.ahon	DESIGNED -	REVISED -
PLOT SCALE = \$SCALE\$	DRAWN -	REVISED -
PLOT DATE = 3/15/2024	CHECKED -	REVISED -
	DATE -	REVISED -

**STATE OF ILLINOIS  
DEPARTMENT OF TRANSPORTATION**

SCALE:		SHEET	OF	SHEETS	STA.	TO STA.
--------	--	-------	----	--------	------	---------

F.A. RTÉ.	SECTION	COUNTY	TOTAL SHEETS	SHEET NO.
*	D3 CRACK SEALING 2025-01	BUREAU	18	18
CONTRACT NO. 66P23				
ILLINOIS   FED. AID PROJECT				