

STATE OF ILLINOIS DEPARTMENT OF TRANSPORTATION PLANS FOR PROPOSED SUPERSTRUCTURE REPLACEMENT LOCAL BRIDGE FORMULA PROGRAM

TR RTE.	SECTION	COUNTY	TOTAL SHEETS	SHEET NO.
312	23-17132-00-BR	CHAMPAIGN	19	1
		ILLINOIS	CONTRACT NO. 91647	

INDEX OF SHEETS

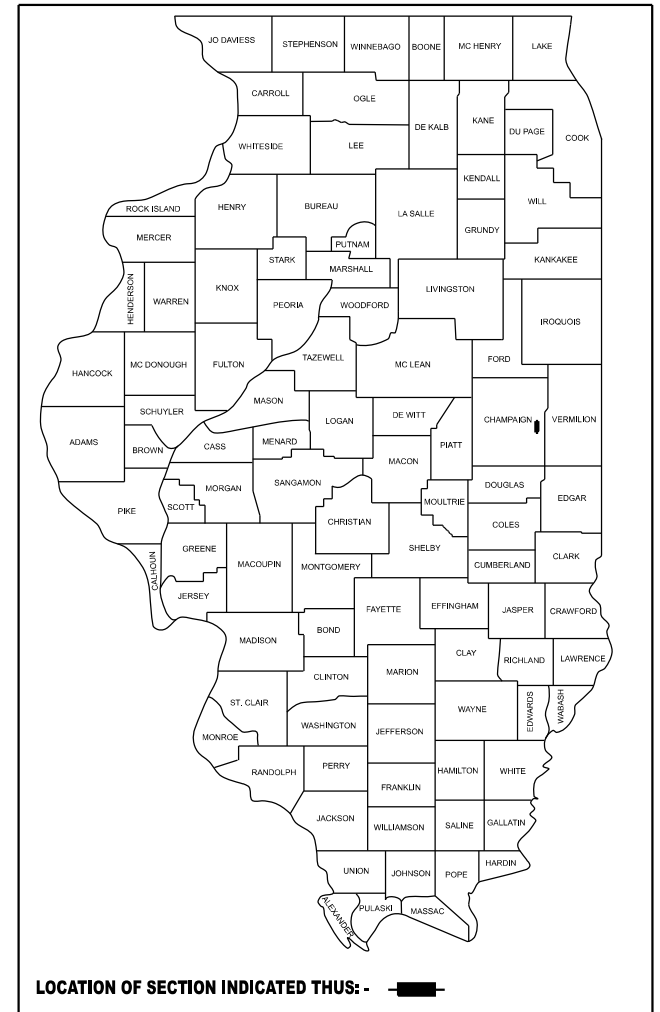
- 1 COVER SHEET
- 2 GENERAL NOTES AND COMMITMENTS
- 3 ALIGNMENT, TIES, AND BENCHMARKS
- 4-5 SUMMARY OF QUANTITIES
- 6 SCHEDULE OF QUANTITIES
- 7 TYPICAL SECTIONS
- 8 PLAN & PROFILE
- 9-19 STRUCTURE PLANS

HIGHWAY STANDARDS

- 000001-08 STANDARD SYMBOLS, ABBREVIATIONS AND PATTERNS
- 001001-02 AREAS OF REINFORCEMENT BARS
- 001006 DECIMAL OF AN INCH AND OF A FOOT
- 515001-04 NAME PLATE FOR BRIDGES
- 701901-09 TRAFFIC CONTROL DEVICES
- 725001-01 OBJECT AND TERMINAL MARKERS
- BLR 21-9 TYPICAL APPLICATION OF TRAFFIC CONTROL DEVICES FOR CONSTRUCTION ON RURAL LOCAL HIGHWAYS

**TR 312 OVER STREAM
SECTION 23-17132-00-BR
ODGEN TOWNSHIP
CHAMPAIGN COUNTY
PROJECT XBDF(524)**

C-95-012-25



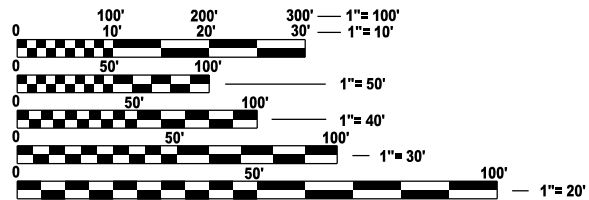
LOCATION OF SECTION INDICATED THUS: - -

UTILITIES

AMEREN ILLINOIS - NORTH (GAS)
CONTACT: NATHAN HILL
PHONE: 618-301-5305

AT&T DISTRIBUTION
CONTACT: G05256@ATT.COM
PHONE: 630-573-6414

AMEREN ILLINOIS (ELECTRIC)
CONTACT: LESLIE CROWNOVER
PHONE: 618-343-8221

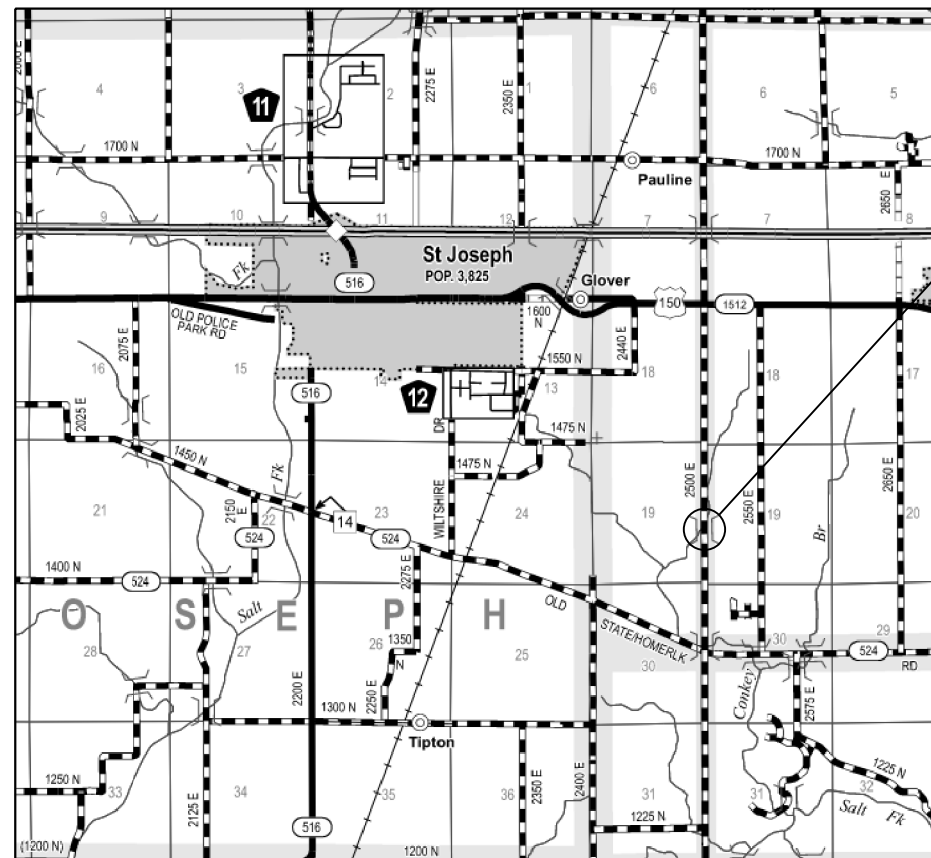


FULL SIZE PLANS HAVE BEEN PREPARED USING STANDARD ENGINEERING SCALES. REDUCED SIZED PLANS WILL NOT CONFORM TO STANDARD SCALES. IN MAKING MEASUREMENTS ON REDUCED PLANS, THE ABOVE SCALES MAY BE USED.

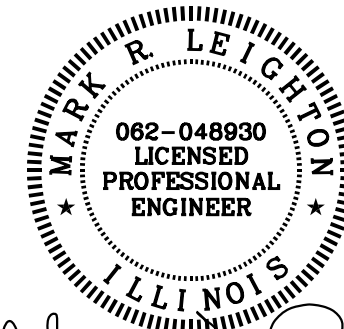
J.U.L.I.E.
JOINT UTILITY LOCATION INFORMATION FOR EXCAVATION
1-800-892-0123
OR 811

PROJECT MANAGER: MARK R. LEIGHTON, P.E., P.L.S.

CONTRACT NO. 91647



**PROPOSED
SUPER REPLACEMENT
SN 010-4028
BEGINS STA. 9+40.00
ENDS STA. 10+40.00**



Expires: 11/30/2026 2-26-24

GROSS LENGTH = 100.00 FT. = 0.019 MILE
NET LENGTH = 100.00 FT. = 0.019 MILE

WORK CONSISTS OF THE REMOVAL OF EXISTING PRECAST DECK BEAMS AND REPLACEMENT WITH PPC DECK BEAMS, SUBSTRUCTURE REHABILITATION, AND THE NECESSARY BACKFILL AND INCIDENTAL APPROACH WORK FOR S.N. 010-4028 AT STA. 9+90.00.

**FUNCTIONAL CLASSIFICATION
LOCAL ROAD
ADT = 200 (2021)
DESIGN SPEED = 30 MPH**

APPROVED	<i>3/7</i>	20 <i>24</i>
	<i>[Signature]</i>	
	COUNTY ENGINEER	
APPROVED	<i>3/7</i>	20 <i>24</i>
	<i>[Signature]</i>	
	ROAD COMMISSIONER	
PASSED	March 27	20 24
	<i>Kensil A. Garnett</i>	
	DISTRICT FIVE ENGINEER OF LOCAL ROADS AND STREETS	
Released For Bid Based on Limited Review	March 27	20 24
	<i>Kensil A. Garnett</i>	
	REGION THREE ENGINEER	
STATE OF ILLINOIS DEPARTMENT OF TRANSPORTATION		

GENERAL NOTES

1. EXCEPT AS NOTED ON THE PLANS, PAVEMENT GRADES SHOWN ARE AT THE TOP OF PAVEMENT SURFACES.
2. ALL ELEVATIONS ARE BASED ON NAVD 88-DATUM.
3. ABANDONED UNDERGROUND UTILITIES THAT CONFLICT WITH CONSTRUCTION SHALL BE DISPOSED OF OUTSIDE THE LIMITS OF THE RIGHT OF WAY ACCORDING TO ARTICLE 202.03 OF THE STANDARD SPECIFICATIONS AND AS DIRECTED BY THE ENGINEER. THIS WORK WILL NOT BE PAID FOR SEPARATELY BUT SHALL BE INCLUDED IN THE COST OF CONTRACT ITEMS INVOLVED.
4. THE FOLLOWING APPLICATION RATES HAVE BEEN USED IN CALCULATING PLAN QUANTITIES:
 TEMPORARY EROSION CONTROL SEEDING: 100 LB/ACRE
 AGGREGATE BASE COURSE: 2.05 TONS/CU YD
 AGGREGATE SURFACE COURSE: 2.05 TONS/CU YD
 RIPRAP: 1.75 TONS/CU YD
5. THE CONTRACTOR'S OPERATIONS AND TEMPORARY STORAGE ACTIVITIES SHALL BE LIMITED TO THE WORK AREA AND/OR CONSTRUCTION LIMITS. ANY ADDITIONAL STAGING AREAS ADJACENT TO THE PROJECT AREA ARE SUBJECT TO PRIOR APPROVAL BY THE ENGINEER AND MUST NOT CONFLICT WITH EXISTING SIDE ROADS, INTERSECTIONS, DRIVEWAYS, OR DRAINAGE. ALL OPERATIONS SHALL BE SUBJECT TO REGULATORY REQUIREMENTS PERMITTED FOR THIS PROJECT. NO ADDITIONAL COMPENSATION WILL BE ALLOWED TO THE CONTRACTOR FOR COMPLIANCE WITH THE ABOVE REQUIREMENTS.
6. DISTURBED AREAS SHALL RECEIVE PERMANENT STABILIZATION WITHIN 7 DAYS OF COMPLETION OF CONSTRUCTION ACTIVITIES. TEMPORARY STABILIZATION OF WORK AREAS IS REQUIRED FOR ALL AREAS REMAINING UNDISTURBED FOR 14 DAYS, UNLESS WORK RESUMES PRIOR TO 21 DAYS. TEMPORARY STABILIZATION MUST BE APPROVED BY THE ENGINEER.
7. THE CONTRACTOR SHALL RELOCATE OR REMOVE AND REPLACE ALL SIGNS THAT INTERFERE WITH THE CONSTRUCTION OPERATIONS AND TEMPORARILY RESET ALL SUCH SIGNS DURING ALL STAGES OF CONSTRUCTION AS DIRECTED BY THE ENGINEER. THE ENGINEER WILL DETERMINE THE PERMANENT LOCATION FOR EXISTING SIGNS TO BE RE-ERECTED.
8. CONTRACTOR SHALL FOLLOW CONSTRUCTION REQUIREMENTS OF SECTION 611 WHEN EXISTING FIELD TILE IS ENCOUNTERED. ALL FIELD TILES ENCOUNTERED SHALL BE CAREFULLY PRESERVED, REPAIRED AND CONNECTED TO THE PROPOSED DRAINAGE STRUCTURES, SEWERS OR DITCHES AS DIRECTED BY THE ENGINEER. PAYMENT FOR THIS WORK SHALL BE INCLUDED IN THE VARIOUS DRAINAGE ITEMS OR AS DIRECTED BY THE ENGINEER.
9. THE LOCATIONS OF EXISTING WATER MAINS, GAS MAINS, SEWERS, ELECTRIC POWER LINES, TELEPHONE LINES AND OTHER UTILITIES AS SHOWN ON THE PLANS ARE BASED ON THE BEST INFORMATION AVAILABLE, BUT THEY ARE NOT GUARANTEED. UNLESS ELEVATIONS ARE SHOWN. ALL UTILITY LOCATIONS SHOWN ON THE CROSS SECTIONS ARE BASED ON THE APPROXIMATE DEPTH SUPPLIED BY THE UTILITY COMPANY. IT SHALL BE THE CONTRACTOR'S RESPONSIBILITY TO ASCERTAIN THEIR EXACT LOCATION FROM THE UTILITY COMPANIES AND BY FIELD INSPECTION.
10. EMBANKMENTS ON HILLSIDES OR SLOPES SHALL BE CONSTRUCTED ACCORDING TO ARTICLE 205.03.
11. CONTRACTOR SHALL VERIFY THE LENGTH OF REQUIRED PIPE CULVERTS AND PIPE DRAINS PRIOR TO ORDERING.
12. WHERE PERMANENT SURVEY MARKERS ARE ENCOUNTERED, THE ENGINEER SHALL BE NOTIFIED BEFORE SUCH MONUMENTS ARE DISTURBED. THE CONTRACTOR SHALL PROTECT AND PRESERVE ALL PROPERTY MARKERS AND MONUMENTS UNTIL THE OWNER AND AN AUTHORIZED SURVEYOR HAS WITNESSED OR OTHERWISE REFERENCED THE LOCATION.
13. THE CONTRACTOR SHALL USE CARE IN ALL REMOVAL ACTIVITIES NEAR ALL EXISTING ITEMS WHICH WILL REMAIN. ANY DAMAGE DONE TO EXISTING ITEMS BY THE CONTRACTOR SHALL BE REPAIRED AT THE CONTRACTORS EXPENSE.
14. A UNIFORMLY STRAIGHT SAW CUT SHALL BE MADE AT LOCATIONS WHERE PROPOSED CONTROLLED LOW-STRENGTH MATERIAL LIMITS MEET THE EXISTING OIL & CHIP SURFACES. THE SAW CUT SHALL BE MADE FULL DEPTH THROUGH THE EXISTING SURFACE. THIS WORK WILL BE CONSIDERED INCLUDED IN THE COST OF THE CONTRACT ITEMS INVOLVED AND NO EXTRA COMPENSATION WILL BE ALLOWED.

COMMITMENTS

1. THERE ARE NO COMMITMENTS ON THIS PROJECT.

MODEL: GEN-1 [Sheet]
 FILE NAME: C:\SP\WHKS & CO\Jobs-Spring - Projects\Champaign County\9768 Champaign Co. TR 312 over Stream\CADD\10.12\CADD Data\Sheets\9768-sh-9genmcte.dgn

design firm
 no. 184001036

 engineers + planners + land surveyors

USER NAME = bjohnson	DESIGNED - BJJ	REVISED -
	DRAWN - BJJ	REVISED -
PLOT SCALE = 0.16666633 1/In.	CHECKED - MRL	REVISED -
PLOT DATE = 1/29/2024	DATE -	REVISED -

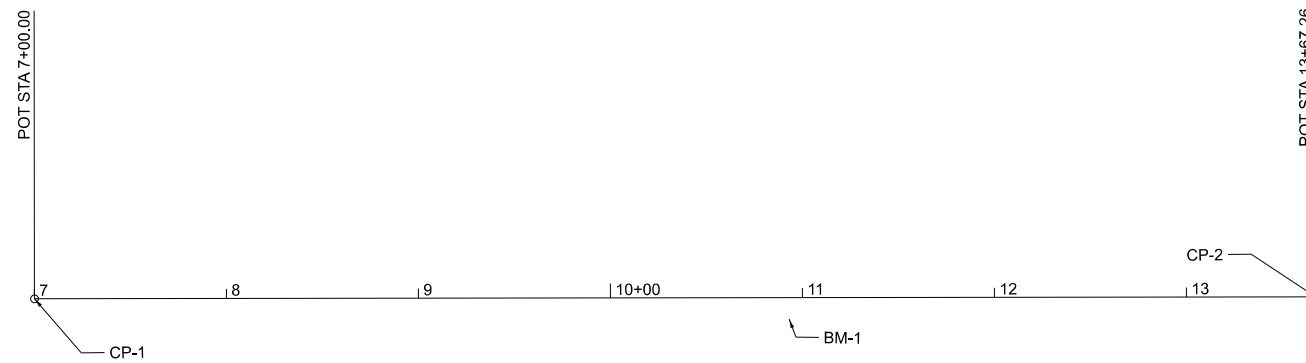
STATE OF ILLINOIS
DEPARTMENT OF TRANSPORTATION

GENERAL NOTES AND COMMITMENTS
TR 312 OVER STREAM

SCALE: 1"=50' SHEET OF SHEETS STA. TO STA.

TR RTE.	SECTION	COUNTY	TOTAL SHEETS	SHEET NO.
312	23-17132-00-BR	CHAMPAIGN	19	2
CONTRACT NO. 91647				
ILLINOIS FED. AID PROJECT				

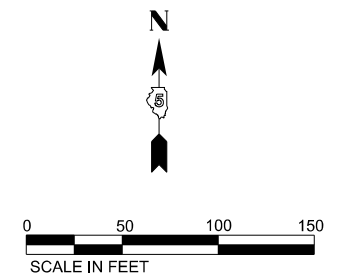
MODEL: ATB-1 (Sheet)
 FILE NAME: C:\SP\WHKS & COL\Jobs-Spring - Projects\Champaign County\9768 Champaign Co. TR 312 over Stream\CADD\10.12\CADD Data\Sheets\9768-sh1-ATB.dgn



BM-1
 SPIKE IN W. FACE OF 1ST POWERPOLE NORTH OF BRIDGE
 ELEVATION = 664.89

CP-1
 SET MAG NAIL OPPOSITE 2ND POWERPOLE SOUTH
 OF BRIDGE +/-2' FROM E. EDGE O/C 2500E ROAD (+/-STA. 6+70)
 ELEVATION = 665.54

CP-2
 SET MAG NAIL +/-2' FROM E. EDGE O/C 2500E ROAD (+/-STA. 14+00)
 ELEVATION = 664.68



USER NAME = bjohnson	DESIGNED - BJJ	REVISED -
	DRAWN - BJJ	REVISED -
PLOT SCALE = 0.16666633 1/In.	CHECKED - MRL	REVISED -
PLOT DATE = 2/15/2024	DATE -	REVISED -

STATE OF ILLINOIS
 DEPARTMENT OF TRANSPORTATION

ALIGNMENT, TIES, AND BENCHMARKS
 TR 312 OVER STREAM


SCALE: 1"=50' SHEET OF SHEETS STA. TO STA.

TR RTE.	SECTION	COUNTY	TOTAL SHEETS	SHEET NO.
312	23-17132-00-BR	CHAMPAIGN	19	3
ILLINOIS FED. AID PROJECT			CONTRACT NO. 91647	

MODEL: S00-1 (Sheet) FILE NAME: C:\SPRINTS & CO\Jobs-Spring - Projects\Champaign County\9768 Champaign Co. TR 312 over Stream\CADD\10.12.CADD Data\Sheet\9768-01-S00.dgn

CODE NO.	ITEM	UNIT	TOTAL QUANTITY	CONSTR. CODE
				BRIDGE
				0013 S.N. 010-4028
20200100	EARTH EXCAVATION	CU YD	20	20
20300100	CHANNEL EXCAVATION	CU YD	37	37
35101400	AGGREGATE BASE COURSE, TYPE B	TON	46	46
50101500	REMOVAL OF EXISTING SUPERSTRUCTURES	EACH	1	1
50102400	CONCRETE REMOVAL	CU YD	0.1	0.1
50200100	STRUCTURE EXCAVATION	CU YD	27	27
50300225	CONCRETE STRUCTURES	CU YD	3.0	3.0
50400405	PRECAST PRESTRESSED CONCRETE DECK BEAMS (21" DEPTH)	SQ FT	1224	1224
50800205	REINFORCEMENT BARS, EPOXY COATED	POUND	340	340
* 50900205	STEEL RAILING, TYPE S1	FOOT	102	102
51500100	NAME PLATES	EACH	1	1


* SPECIALTY ITEMS

 <p>design firm no. 184001036 engineers • planners • land surveyors</p>	USER NAME = bjohnson	DESIGNED - BJJ	REVISED -	STATE OF ILLINOIS DEPARTMENT OF TRANSPORTATION	SUMMARY OF QUANTITIES TR 312 OVER STREAM	TR	SECTION	COUNTY	TOTAL	SHEET		
	PLOT SCALE = 0.16666633 / in.	DRAWN - BJJ	REVISED -			312	23-17132-00-BR	CHAMPAIGN	19	4		
	PLOT DATE = 1/28/2024	CHECKED - MRL	REVISED -			SCALE: 1"=50'		SHEET	OF	SHEETS	STA.	TO STA.
	DATE -	REVISED -								ILLINOIS FED. AID PROJECT		
CONTRACT NO. 91647												

MODEL: SOO-2 (Sheet) FILE NAME: C:\SPRINTS & CADD\Projects\Champaign County\9768 Champaign Co. TR 312 over Stream\CADD\19.12\CADD Data\Sheet\9768-sh-SOO.dgn

CODE NO.	ITEM	UNIT	TOTAL QUANTITY	CONSTR. CODE
				BRIDGE
				0013 S.N. 010-4028
59300100	CONTROLLED LOW-STRENGTH MATERIAL	CUYD	58.8	58.8
60100060	CONCRETE HEADWALLS FOR PIPE DRAINS	EACH	2	2
60103400	PIPE DRAINS, CORRUGATED STEEL 10"	FOOT	20	20
60103700	PIPE DRAINS, CORRUGATED STEEL 18"	FOOT	40	40
67100100	MOBILIZATION	L SUM	1	1
* 72501000	TERMINAL MARKER - DIRECT APPLIED	EACH	4	4
X2501000	SEEDING, CLASS 2 (SPECIAL)	ACRE	0.25	0.25
X2810206	STONE RIPRAP, CLASS A3 (SPECIAL)	TON	222	222
X6110073	EXISTING FIELD TILE REMOVAL	FOOT	40	40
X7011800	TRAFFIC CONTROL AND PROTECTION, STANDARD BLR 21	L SUM	1	1

* SPECIALTY ITEMS

 design firm no. 184001036 engineers • planners • land surveyors	USER NAME = bjohnson	DESIGNED - BJJ	REVISED -	STATE OF ILLINOIS DEPARTMENT OF TRANSPORTATION	SUMMARY OF QUANTITIES TR 312 OVER STREAM				TR	SECTION	COUNTY	TOTAL	SHEET
	PLOT SCALE = 0.16666633' / in.	CHECKED - MRL	REVISED -						312	23-17132-00-BR	CHAMPAIGN	19	5
	PLOT DATE = 2/15/2024	DATE -	REVISED -		SCALE: 1"=50'	SHEET	OF	SHEETS	STA.	TO STA.	ILLINOIS FED. AID PROJECT CONTRACT NO. 91647		

LOCATION	20200100	20300100	FOR INFORMATION ONLY		EARTHWORK BALANCE WASTE(+)AND SHORTAGE (-) CU. YD.
	EARTH EXCAVATION	CHANNEL EXCAVATION	EXCAVATION TO BE USED IN EMBANKMENT (ADJUSTED FOR SHRINKAGE) (EXC. x 0.75)	EMBANKMENT (FILL)	
	CU. YD.	CU. YD.	CU. YD.	CU. YD.	
STA. 9+40.00 TO STA. 9+63.56	10		8	15	-7
STA. 9+63.56 TO STA. 10+16.44		37	* 14		14
STA. 10+16.44 TO STA. 10+40.00	10		8	15	-7
TOTAL	20	37	30	30	0

EARTH EXCAVATION SHRINKAGE FACTOR = 25%
*CHANNEL EXCAVATION USED IN EMBANKMENT= 50%

35101400 AGGREGATE BASE COURSE, TYPE B

TR 312	TON
CL 9+40.00 TO CL 9+63.56	23
CL 10+16.44 TO CL 10+40.00	23
TOTAL	46

60100060 CONCRETE HEADWALLS FOR PIPE DRAINS

TR 312	EACH
18' LT 9+85.00	1
18' RT 9+95.00	1
TOTAL	2

60103400 PIPE DRAINS, CORRUGATED STEEL 10"

TR 312	FOOT
19' LT 10+09.00 TO LT 10+29.00	20
TOTAL	20

60103700 PIPE DRAINS, CORRUGATED STEEL 18"

TR 312	FOOT
19' LT 9+65.00 TO LT 9+85.00	20
17' RT 9+70.00 TO RT 9+90.00	20
TOTAL	40

67100100 MOBILIZATION

TR 312	L SUM
TOTAL	1

X2501000 SEEDING, CLASS 2 (SPECIAL)

TR 312	ACRE
LT 9+40.00 TO LT 9+63.56	0.03
LT 10+16.44 TO LT 10+40.00	0.03
RT 9+40.00 TO RT 9+63.56	0.03
RT 10+16.44 TO RT 10+40.00	0.03
* TOTAL PER MIN. DEGREE OF ACCURACY	TOTAL 0.25

X6110073 EXISTING FIELD TILE REMOVAL

TR 312	FOOT
19' LT 9+65.00 TO LT 9+85.00	20
17' RT 9+70.00 TO RT 9+90.00	20
TOTAL	40

X7011800 TRAFFIC CONTROL AND PROTECTION, STANDARD BLR 21

TR 312	L SUM
TOTAL	1

MODEL: SCH-1 (Sheet)
FILE NAME: C:\SP\WHKS & CO\Jobs-Spring - Projects\Champaign County\9768 Champaign Co. TR 312 over Stream\CADD\10.12\CADD Data\Sheets\9768-sht-schedule.dgn



USER NAME = bjohnson	DESIGNED - BJJ	REVISED -
PLOT SCALE = 0.16666633' / in.	DRAWN - BJJ	REVISED -
PLOT DATE = 1/26/2024	CHECKED - MRL	REVISED -
	DATE -	REVISED -

STATE OF ILLINOIS
DEPARTMENT OF TRANSPORTATION

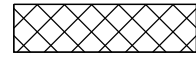
SCHEDULE OF QUANTITIES
TR 312 OVER STREAM

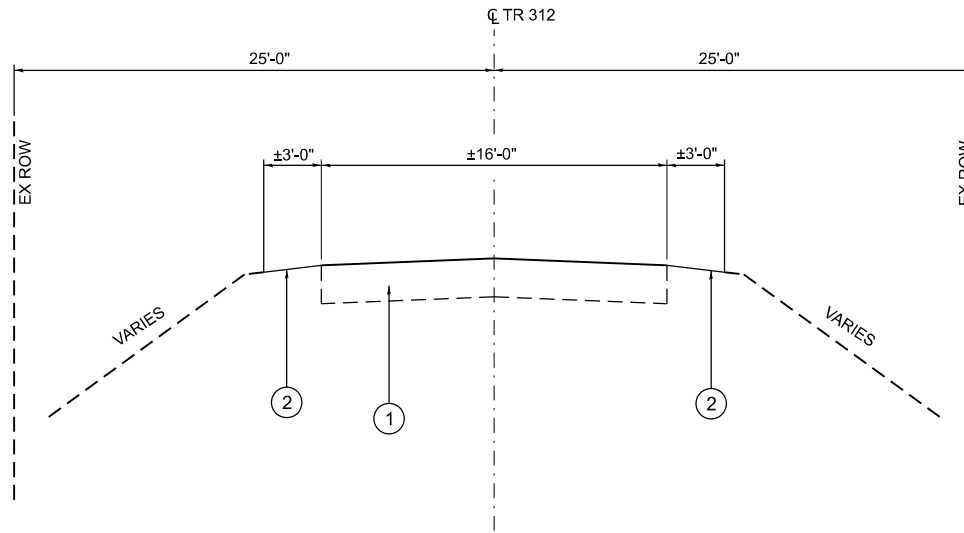
SCALE: 1"=50' SHEET OF SHEETS STA. TO STA.

TR RTE.	SECTION	COUNTY	TOTAL SHEETS	SHEET NO.
312	23-17132-00-BR	CHAMPAIGN	19	6
			CONTRACT NO. 91647	
			ILLINOIS FED. AID PROJECT	

LEGEND

- ① EX OIL AND CHIP
- ② EX EARTH SHOULDER
- ③ PR AGGREGATE BASE COURSE, TYP B (8")
- ④ PR EARTH SHOULDERS

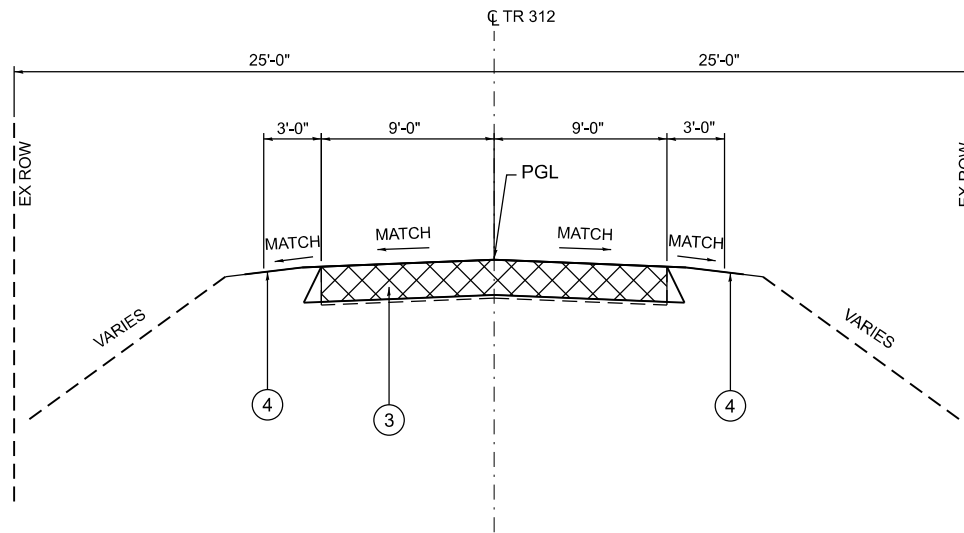
 TO BE REMOVED
(COST INCLUDED IN STRUCTURE EXCAVATION)



EXISTING TYPICAL SECTION

STA. 9+40.00 TO STA. 9+63.56
STA. 10+16.44 TO STA. 10+40.00
(LOOKING EAST)

BRIDGE OMISSION
STA. 9 + 63.56 TO 10 + 16.44



PROPOSED TYPICAL SECTION

STA. 9+40.00 TO STA. 9+63.56
STA. 10+16.44 TO STA. 10+40.00
(LOOKING EAST)

MODEL: TYP-1 [Sheet]
FILE NAME: C:\SP\WHKS & CO\Jobs-Spring - Projects\Champaign County\9768 Champaign Co. TR 312 over Stream\CADD\10.12\CADD Data\Sheets\9768-eh-typical-5scale.dgn



USER NAME = bjohnson	DESIGNED - BJJ	REVISED -
DRAWN - BJJ	REVISIONS -	
PLOT SCALE = 0.16666633' / in.	CHECKED - MRL	REVISED -
PLOT DATE = 2/15/2024	DATE -	REVISED -

STATE OF ILLINOIS
DEPARTMENT OF TRANSPORTATION

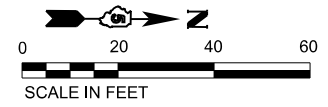
TYPICAL SECTIONS
TR 312 OVER STREAM

SCALE: 1"=5' SHEET OF SHEETS STA. TO STA.

TR RTE.	SECTION	COUNTY	TOTAL SHEETS	SHEET NO.
312	23-17132-00-BR	CHAMPAIGN	19	7
CONTRACT NO. 91647				
ILLINOIS FED. AID PROJECT				

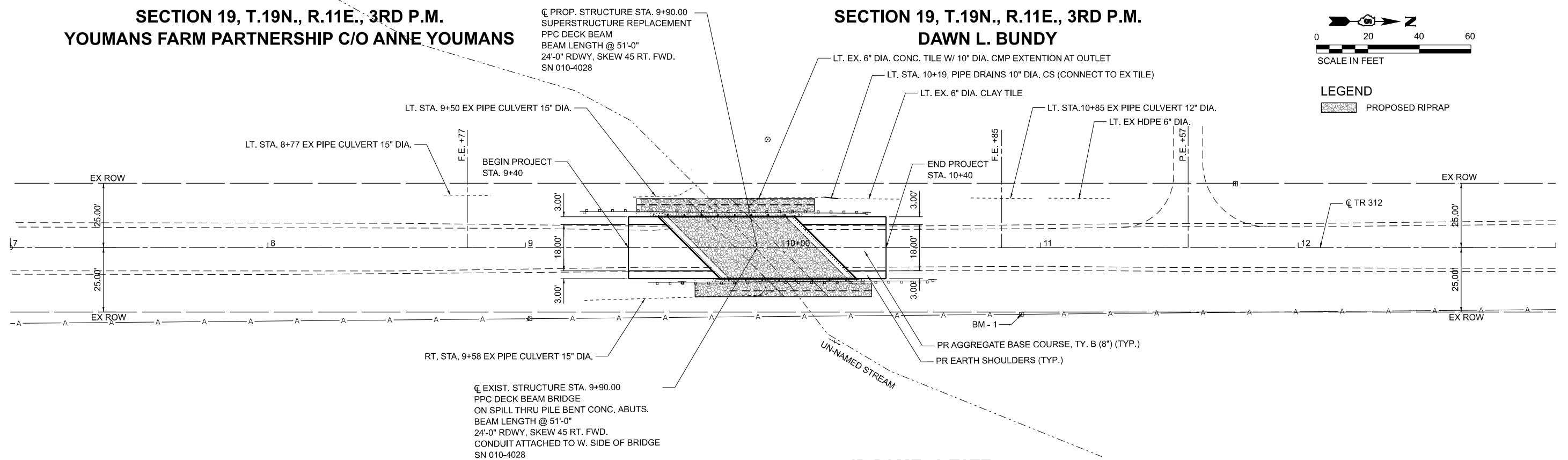
**SECTION 19, T.19N., R.11E., 3RD P.M.
YOUMANS FARM PARTNERSHIP C/O ANNE YOUMANS**

**SECTION 19, T.19N., R.11E., 3RD P.M.
DAWN L. BUNDY**



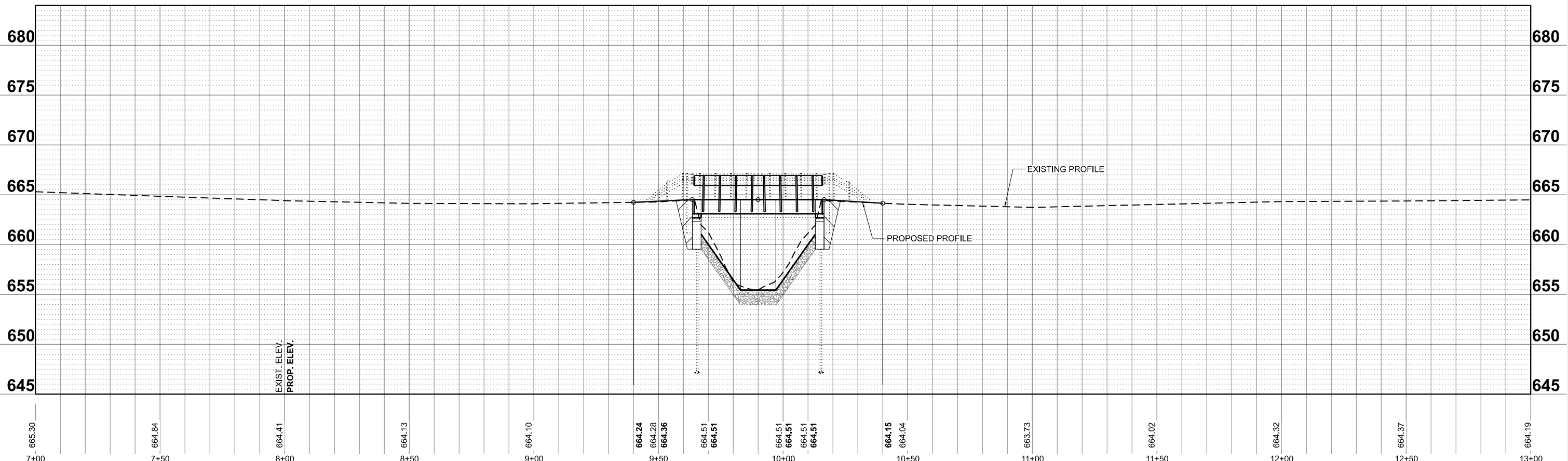
LEGEND

 PROPOSED RIPRAP



**DARRIN AND PAMELA TATE
SECTION 19, T.19N, R.14W., 2ND P.M.**

MODEL: EXCL - Plan 1 (Sheet)
 FILE NAME: C:\SP\WHKS & CO\Jobs-Spring - Projects\Champaign County\9768 Champaign Co. TR 312 over Stream\CADD\10.12\CADD Data\Sheets\9768-sh1-plnprf.dgn



design firm
 no. 184001036

 engineers + planners + land surveyors

USER NAME = bjohnson	DESIGNED - BJJ	REVISED -
PLOT SCALE = 0.16666633' / in.	DRAWN - BJJ	REVISED -
PLOT DATE = 2/15/2024	CHECKED - MRL	REVISED -
	DATE -	REVISED -

**STATE OF ILLINOIS
DEPARTMENT OF TRANSPORTATION**

**PLAN & PROFILE
TR 312 OVER STREAM**

SCALE: 1"=20' SHEET OF SHEETS STA. 7+00.00 TO STA. 13+00.00

TR RTE.	SECTION	COUNTY	TOTAL SHEETS	SHEET NO.
312	23-17132-00-BR	CHAMPAIGN	19	8
CONTRACT NO. 91647				
ILLINOIS FED. AID PROJECT				

Benchmark: BM-1, Sta. 10+93.3, 25.39' Rt. Rail spike in West face of first power pole North of bridge. Elevation = 664.89

Existing Structure: SN 010-4028 was built in 1974 as Section CAB 13-73, Station 9+90. The structure is a single span precast prestressed concrete deck beam bridge on spill thru pile bent concrete abutments founded on concrete filled metal shell piling. The bridge is constructed on a 45° skew, right forward. Beam lengths are 51'-0" each with a total bridge length of 52'-10 5/8" back-to-back of abutments. The out-to-out bridge width is 24'-5". Road is to be closed and traffic detoured during construction.

Salvage: None

INDEX OF SHEETS

1. General Plan and Elevation
2. General Data
- 3.-4. 21" x 36" PPC Deck Beam Details
5. Superstructure Details
6. Steel Railing, Type S-1
7. Substructure Details
- 8.-11. Existing Plans (for information only)

DESIGN SPECIFICATIONS (New Const.)

2020 AASHTO LRFD Bridge Design Specifications
9th Edition

LOADING HL-93 (New Const.)

Allow 25#/sq. ft. for future wearing surface.

DESIGN STRESSES

FIELD UNITS (New Construction)

$f_c = 3,500$ psi (Substructure)
 $f_y = 60,000$ psi (Reinforcement)

FIELD UNITS (Existing)

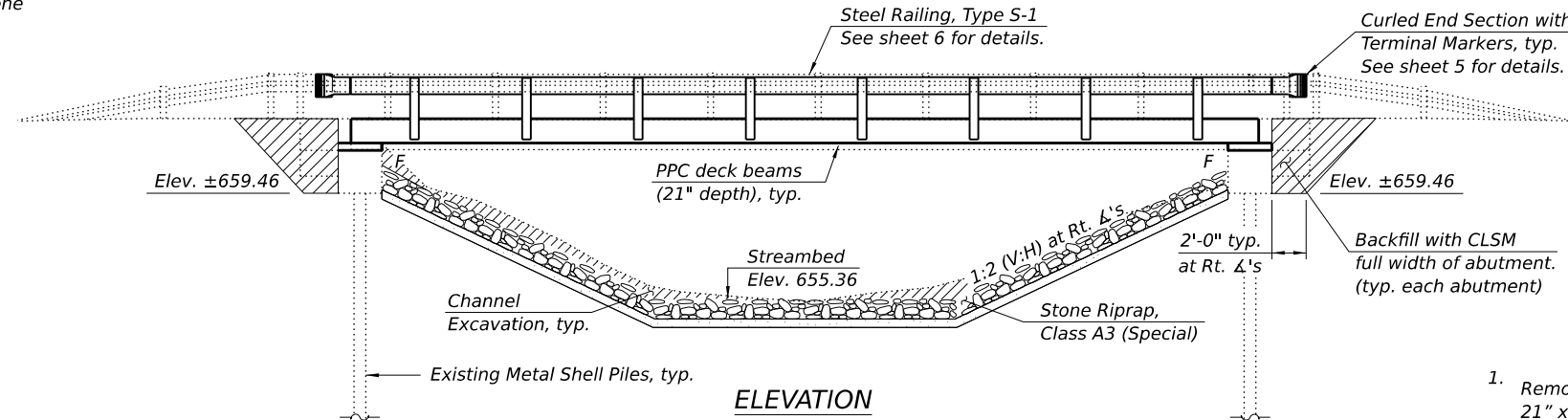
$f_c = 1,400$ psi
 $f_s = 20,000$ psi (Reinforcement)

PRECAST UNITS (New Construction)

$f_c = 6,000$ psi
 $f_{ci} = 5,000$ psi
 $f_{pu} = 270,000$ psi (1/2" low lax strands)
 $f_{pbt} = 201,960$ psi (1/2" low lax strands)

SEISMIC DATA (Exist. Const.)

Seismic Performance Zone (SPZ) = 1
Design Spectral Acceleration at 1.0 sec. (S_{D1}) = 0.098g
Design Spectral Acceleration at 1.0 sec. (S_{D5}) = 0.190g
Soil Site Class = C



SCOPE OF WORK

1. Remove and replace existing superstructure with eight (8) new 21" x 36" Precast Prestressed Concrete (PPC) Deck Beams.
2. Add new Type S-1 steel railing.
3. Existing abutment caps to be raised with full width and length reinforced concrete cap extensions.
4. Modify wingwalls to accommodate new superstructure.
5. Streambed and bridge embankment to be armored with Stone Riprap, Class A3 (Special).

UNNAMED STREAM
RE-BUILT BY
CHAMPAIGN COUNTY
SECTION 23-17132-00-BR
TR 312 STATION 9+90
STR. NO. 010-4028 LOADING HL93

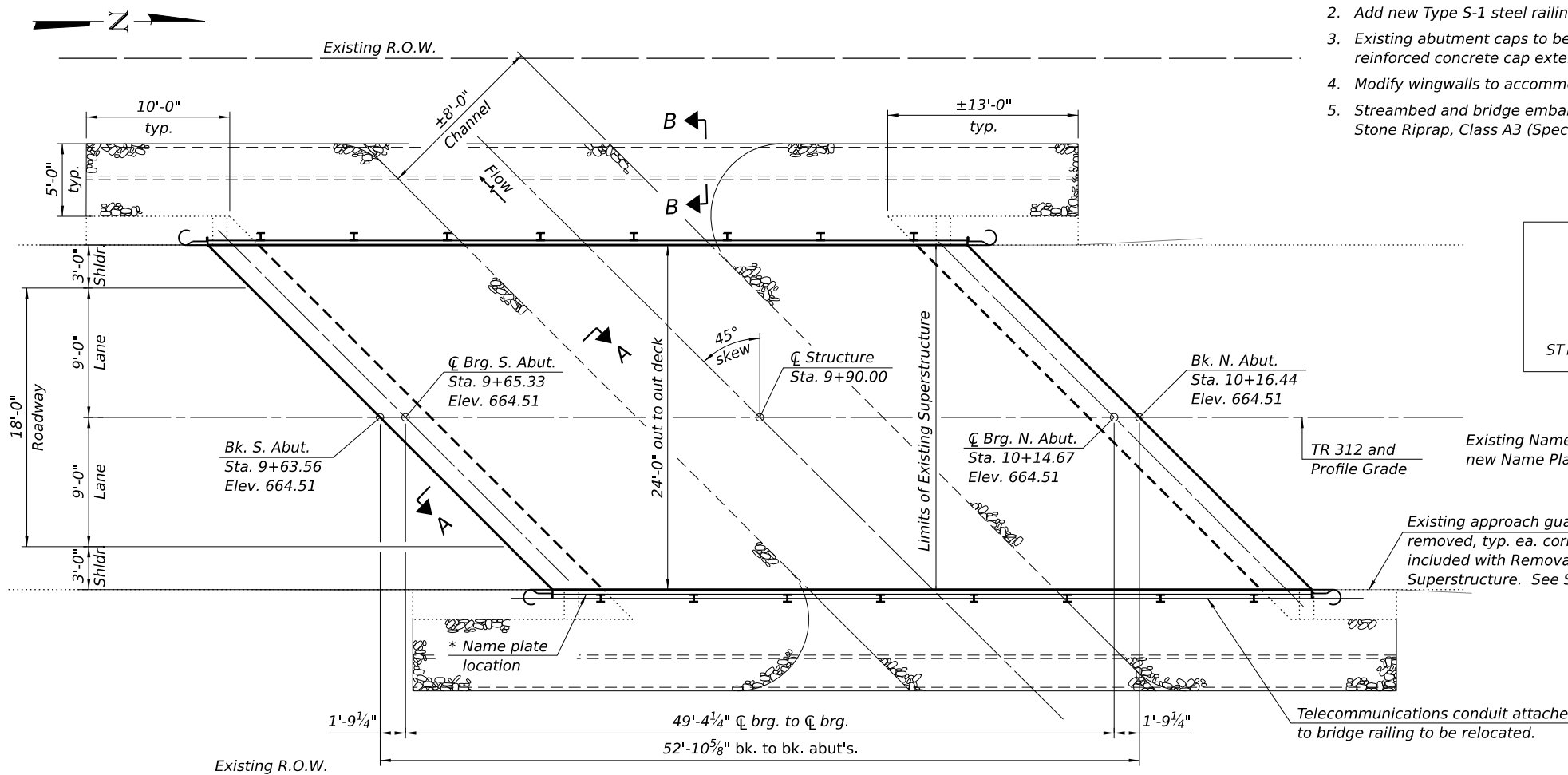
NAME PLATE

See Std. 515001

Existing Name Plate shall be cleaned and relocated next to new Name Plate. Cost included with Name Plates.

Existing approach guardrail ends to be removed, typ. ea. corner. Cost included with Removal of Existing Superstructure. See Special Provisions.

Telecommunications conduit attached to bridge railing to be relocated.



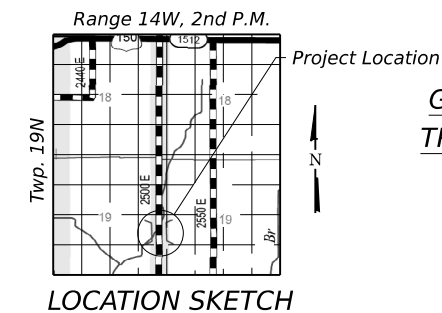
DESIGN SCOUR ELEVATION TABLE

Event / Limit State	Design Scour Elev. (ft.)		Item 113
	S. Abut.	N. Abut.	
Q100	-	-	8
Q200	-	-	
Design	659.46	659.46	
Check	659.46	659.46	

* Place on back side of 12" rail.

Notes:

1. See roadway plans for additional information not shown herein.
2. See Sheet 2 for Proposed Profile Grade, Section A-A, and Section B-B.



GENERAL PLAN AND ELEVATION
TR 312 OVER UNNAMED STREAM
SECTION 23-17132-00-BR
CHAMPAIGN COUNTY
STATION 9+90
STRUCTURE NO. 010-4028



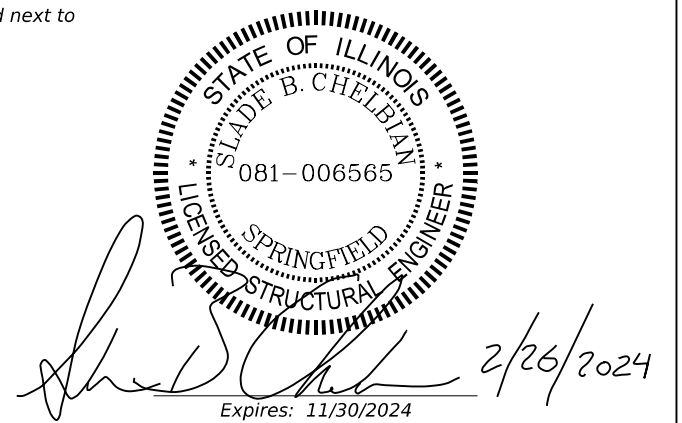
USER NAME = dheberling	DESIGNED - JLM	REVISED -
PLOT DATE = 3/11/2024	CHECKED - GEM	REVISED -
PLOT DATE = 10:04:23 AM	DRAWN - DLH / JLM	REVISED -
	CHECKED - JLM / SBC	REVISED -

CHAMPAIGN COUNTY HIGHWAY DEPARTMENT

STRUCTURE NO. 010-4028

SHEET 1 OF 11 SHEETS

TR RTE.	SECTION	COUNTY	TOTAL SHEETS	SHEET NO.
312	23-17132-00-BR	CHAMPAIGN	19	9
CONTRACT NO. 91647				
ILLINOIS FED. AID PROJECT				



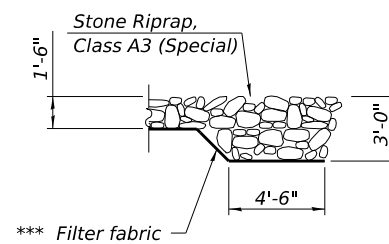
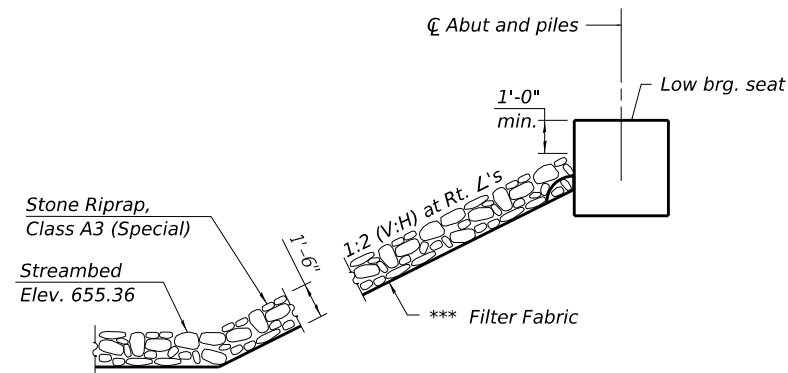
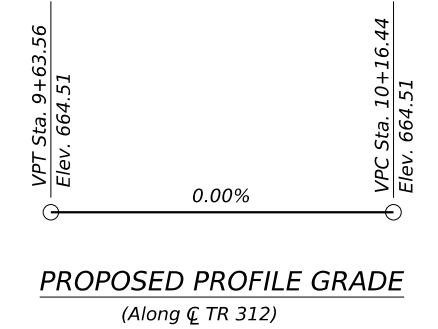
FILE NAME: C:\SP\WHKS & COL\Jobs-Spring - Projects\Champaign County\0768 Champaign Co. TR 312 over Stream\CADD\10-12\CADD Data\Bridges\SN010_4028.dgn

GENERAL NOTES

1. Reinforcement bars designated (E) shall be epoxy coated.
2. Plan dimensions and details relative to existing plans are subject to nominal construction variations. The Contractor shall field verify existing dimensions and details affecting new construction and make necessary approved adjustments prior to construction or ordering of materials. Such variations shall not be cause for additional compensation for a change in scope of the work, however, the Contractor will be paid for the quantity actually furnished at the unit price bid for the work.
3. The Contractor shall be responsible for diverting the water flow from the construction area using a method meeting the approval of the Engineer. This shall not be paid for separately but shall be included in the cost of the Contract.
4. Layout of the slope protection system and streambed armoring shown herein may be varied to suit ground conditions in the field as directed by the Engineer.

TOTAL BILL OF MATERIAL

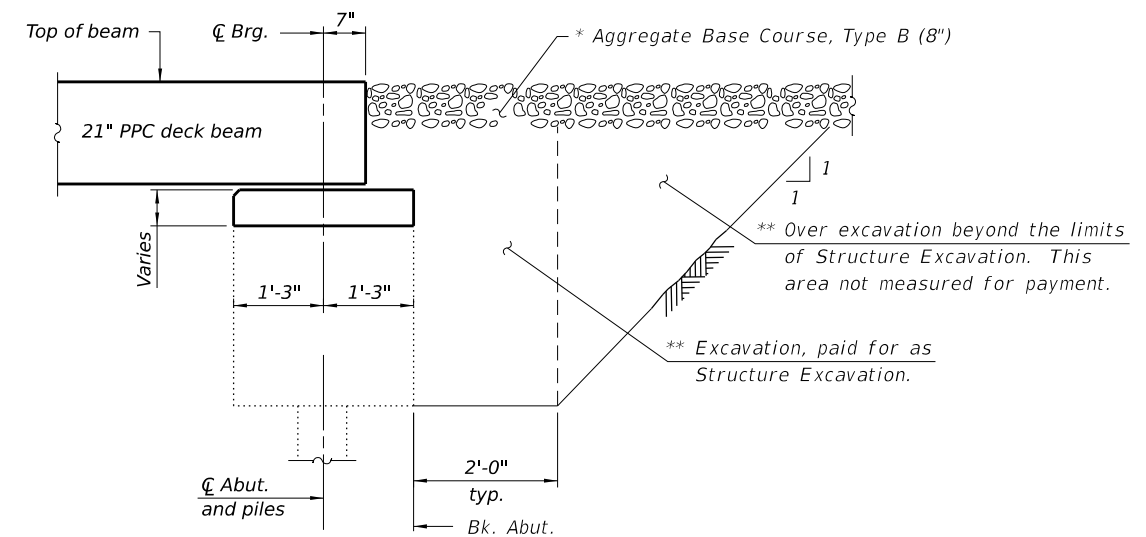
Item	Unit	Super	Sub	Total
Channel Excavation	Cu. Yd.		37	37
Removal of Existing Superstructures	Each	1		1
Concrete Removal	Cu. Yd.		0.1	0.1
Structure Excavation	Cu. Yd.		27	27
Concrete Structures	Cu. Yd.		3.0	3.0
Precast Prestressed Concrete Deck Beams (21" Depth)	Sq. Ft.	1,224		1,224
Reinforcement Bars, Epoxy Coated	Pound		340	340
Steel Railing, Type S1	Foot	102		102
Name Plates	Each	1		1
Controlled Low-Strength Material	Cu. Yd.		58.8	58.8
Terminal Marker - Direct Applied	Each		4	4
Stone Riprap, Class A3 (Special)	Ton		222	222



SECTION A-A

*** Cost included with Stone Riprap, Class A3 (Special). See Special Provisions.

SECTION B-B



- * See Roadway Plans
- ** Backfill with Controlled Low-Strength Material (CLSM) (Mix 2) full width of abutment cap only, typ. each abutment.

FILE NAME: C:\SP\WHKS & COL\Jobs-Spring - Projects\Champaign County\0768 Champaign Co. TR 312 over Stream\CADD\10.12\CADD Data\Bridges\N010_4028.dgn



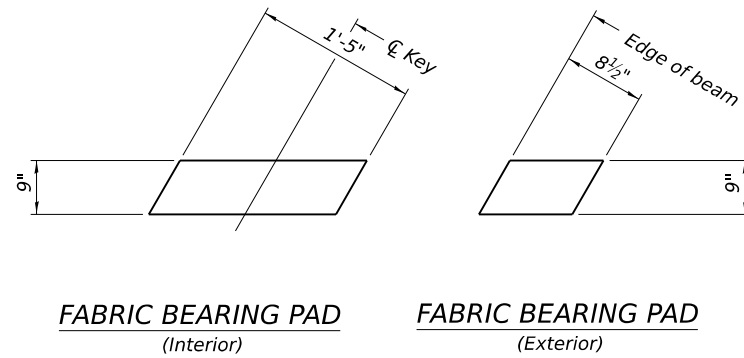
USER NAME = dheberling	DESIGNED - JLM	REVISED -
	CHECKED - GEM	REVISED -
PLOT DATE = 3/11/2024	DRAWN - DLH / JLM	REVISED -
PLOT DATE = 10:04:56 AM	CHECKED - JLM / SBC	REVISED -

CHAMPAIGN COUNTY HIGHWAY DEPARTMENT

GENERAL DATA
STRUCTURE NO. 010-4028

SHEET 2 OF 11 SHEETS

TR RTE.	SECTION	COUNTY	TOTAL SHEETS	SHEET NO.
312	23-17132-00-BR	CHAMPAIGN	19	10
CONTRACT NO. 91647				
ILLINOIS		FED. AID PROJECT		

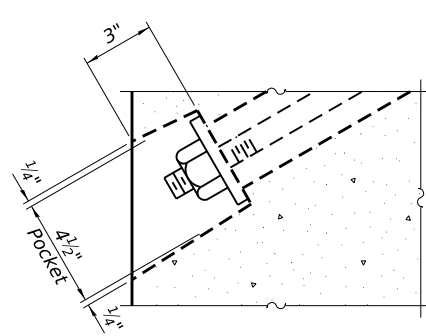


FABRIC BEARING PAD
(Interior)

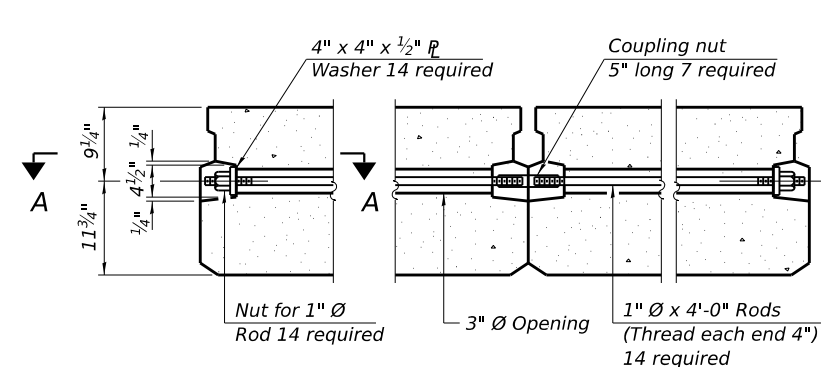
FABRIC BEARING PAD
(Exterior)

Note:
1. All bearing pads shall be 1" thick.

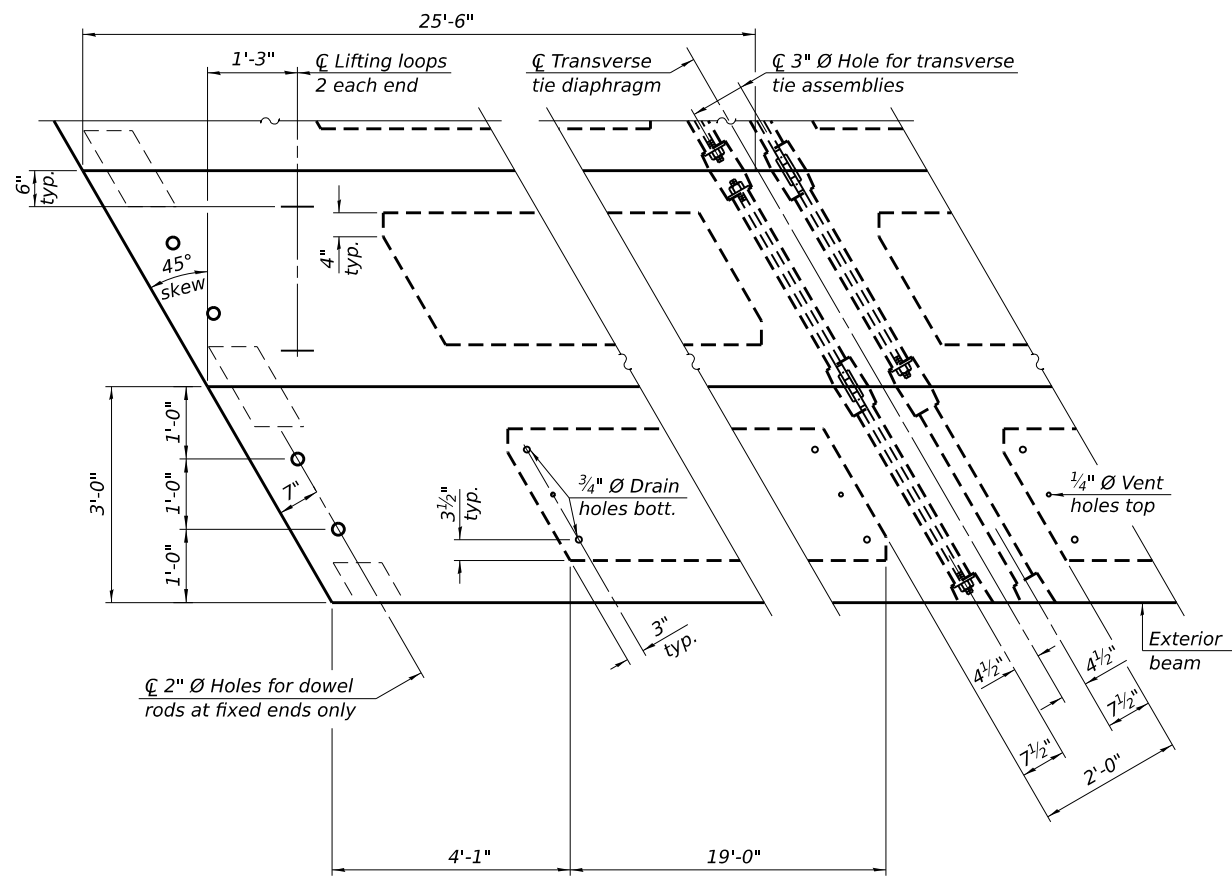
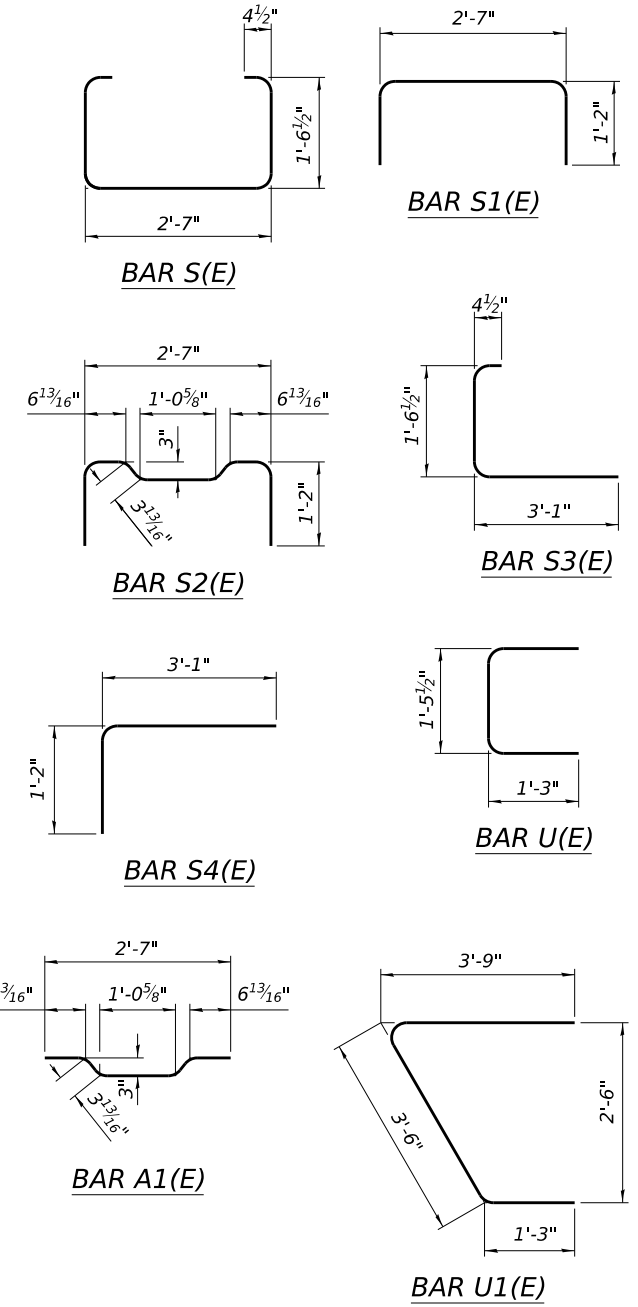
FIXED



SECTION A-A

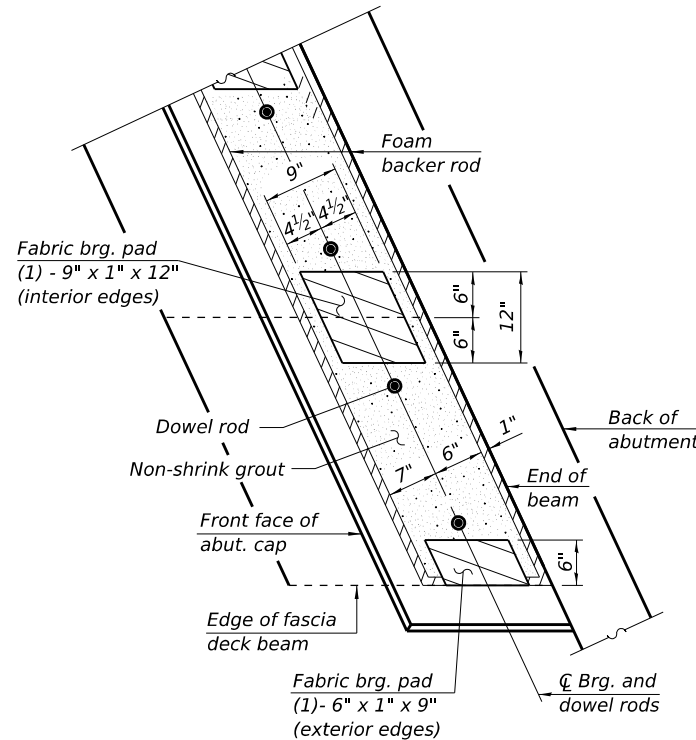


TYPICAL TRANSVERSE TIE ASSEMBLY



PLAN VIEW

Connect beams in pairs with the transverse tie configuration shown.



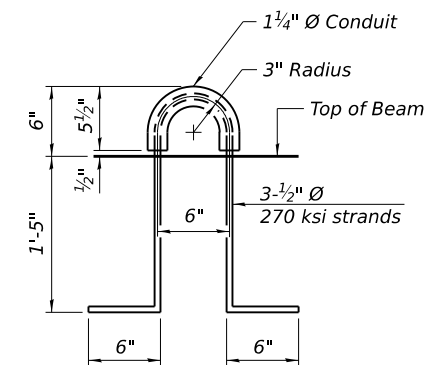
PLAN - FIXED BEARINGS

(See Sheet 7 for Section Thru Abutment)

The bearing seat surfaces shall be adjusted by shimming the bearing to assure firm and even bearing prior to placement of grout. 2 - 3/8" fabric adjusting shims of the dimensions of the exterior bearing pad shown shall be provided for each bearing.

NOTES

1. Prestressing steel shall be uncoated high strength, low relaxation 7-wire strand, Grade 270.
2. The nominal diameter shall be 1/2" and the nominal cross-sectional area shall be 0.153 sq. in.
3. The 1" Ø rods in the transverse tie assembly shall be tightened to a snug fit and the threads set. Pockets on exterior faces of bridge shall be filled with grout after transverse tie assembly is in place.
4. Two 1/8" fabric adjusting shims of the dimensions of the exterior bearing pad shall be provided for each bearing pad location.
5. A minimum 2 1/2" Ø lifting pin shall be used to engage the lifting loops during handling.
6. Corrosion Inhibitor, per Article 1020.05(b)(10) and 1021.07 of the Standard Specifications, shall be used in the concrete for precast prestressed concrete deck beams.
7. Compressive strength of prestressed concrete, f'c, shall be 6000 psi.
8. Compressive strength of prestressed concrete at release, f'ci, shall be 5000 psi.



LIFTING LOOP DETAIL

BILL OF MATERIAL

Precast Prestressed Conc. Deck Bms. (21" depth)	Sq. Ft.	1,224
---	---------	-------

FILE NAME: C:\SP\WHKS & CO\Jobs-Spring - Projects\Champaign County\0768 Champaign Co. TR 312 over Stream\CADD\10.12\CADD Data\Bridges\N010_4028.dgn



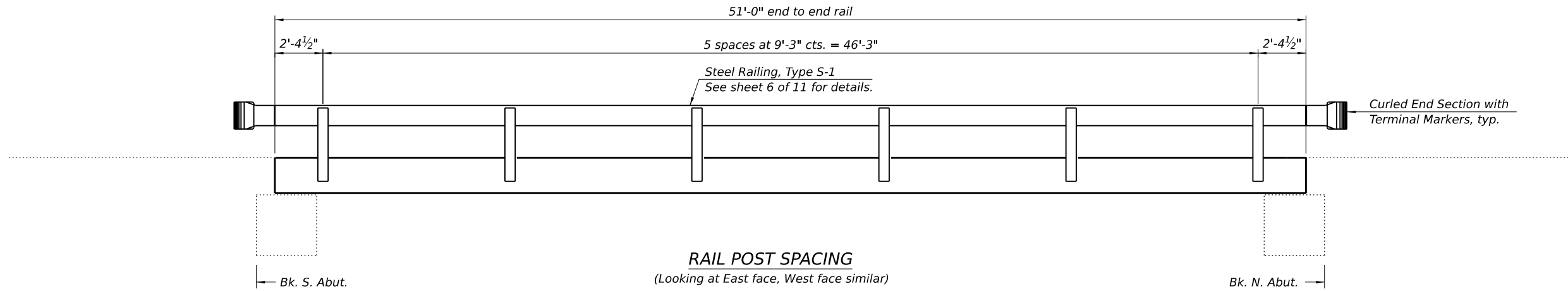
USER NAME = dheberling	DESIGNED - JLM	REVISED -
PLOT DATE = 3/11/2024	CHECKED - GEM	REVISED -
PLOT DATE = 10:04:57 AM	DRAWN - DLH / JLM	REVISED -
	CHECKED - JLM / SBC	REVISED -

CHAMPAIGN COUNTY HIGHWAY DEPARTMENT

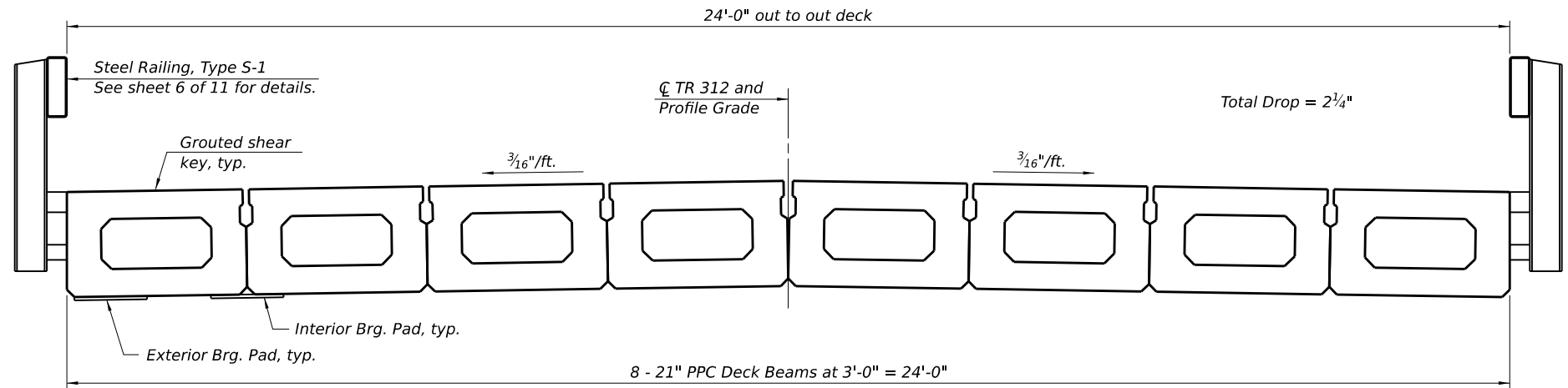
21" x 36" PPC DECK BEAM DETAILS
STRUCTURE NO. 010-4028

SHEET 4 OF 11 SHEETS

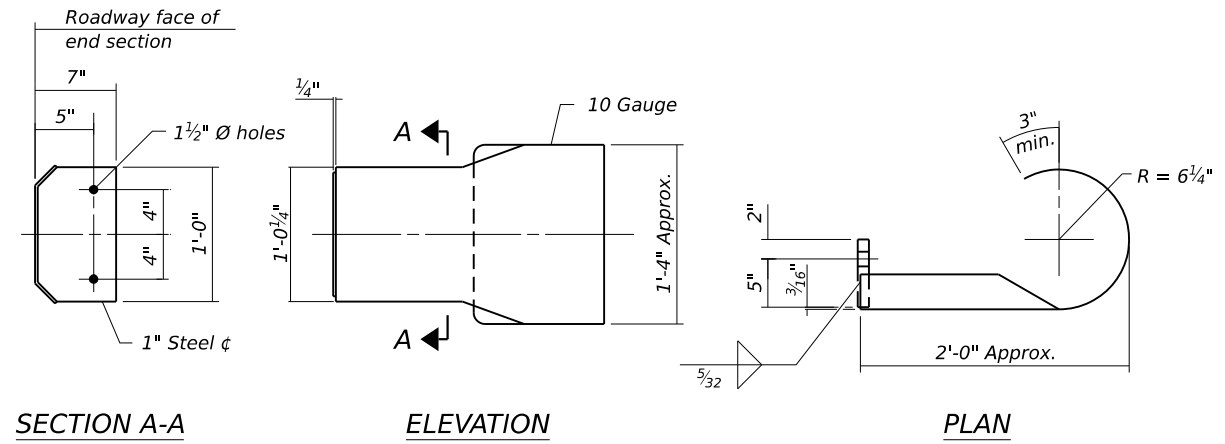
TR RTE.	SECTION	COUNTY	TOTAL SHEETS	SHEET NO.
312	23-17132-00-BR	CHAMPAIGN	19	12
CONTRACT NO. 91647				
ILLINOIS FED. AID PROJECT				



RAIL POST SPACING
(Looking at East face, West face similar)

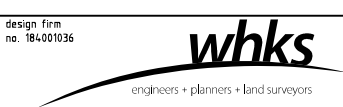


CROSS SECTION



DETAILS OF CURLED END SECTION
(Cost included with Steel Railing, Type S-1.)

FILE NAME: C:\SP\WHKS & CO\Jobs-Spring - Projects\Champaign County\0768 Champaign Co. TR 312 over Stream\CADD\10.12\CADD Data\Bridges\N010_4028.dgn



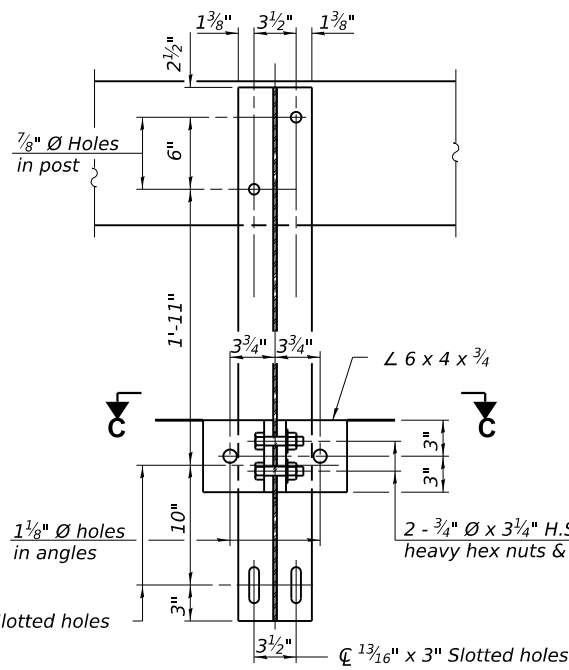
USER NAME = dheberling	DESIGNED - JLM	REVISED -
PLOT DATE = 3/11/2024	CHECKED - GEM	REVISED -
PLOT DATE = 10:04:57 AM	DRAWN - DLH / JLM	REVISED -
	CHECKED - JLM / SBC	REVISED -

CHAMPAIGN COUNTY HIGHWAY DEPARTMENT

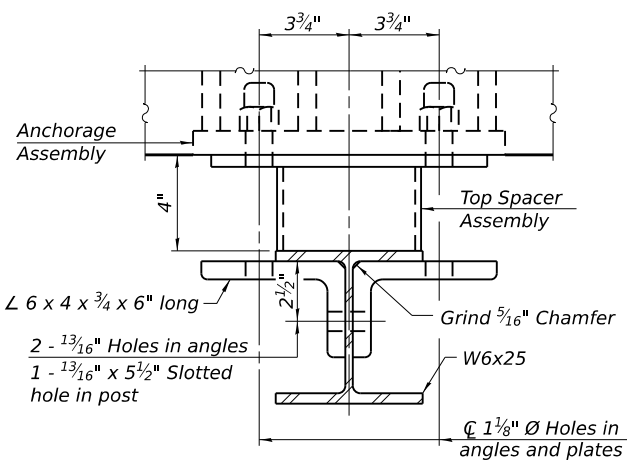
SUPERSTRUCTURE DETAILS
STRUCTURE NO. 010-4028

SHEET 5 OF 11 SHEETS

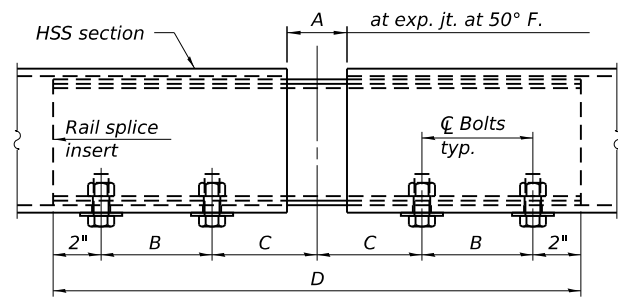
TR RTE.	SECTION	COUNTY	TOTAL SHEETS	SHEET NO.
312	23-17132-00-BR	CHAMPAIGN	19	13
CONTRACT NO. 91647				
ILLINOIS FED. AID PROJECT				



SECTION B-B



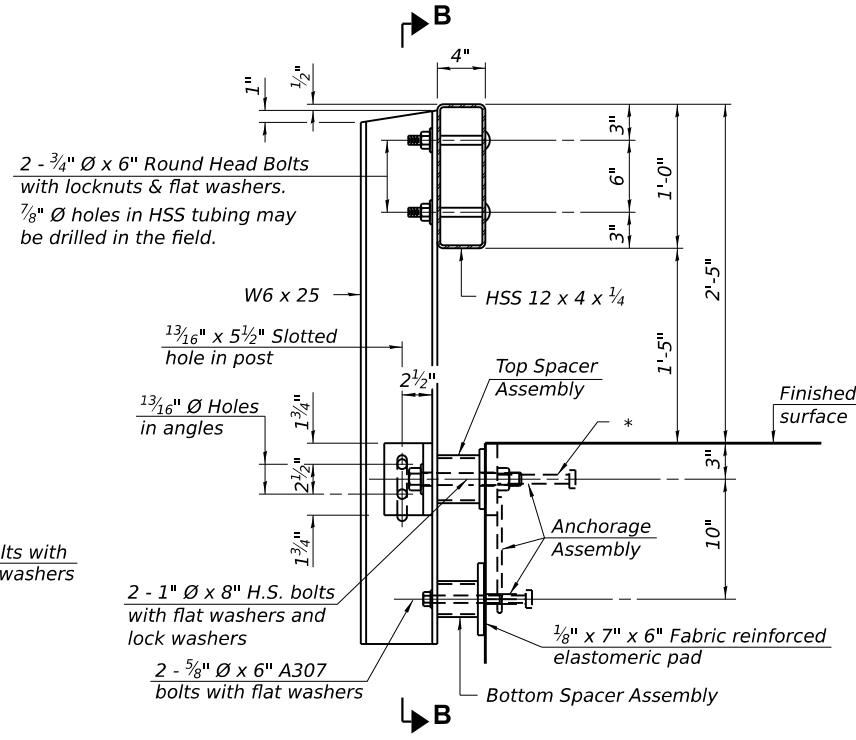
SECTION C-C



RAIL SPLICE ELEVATION

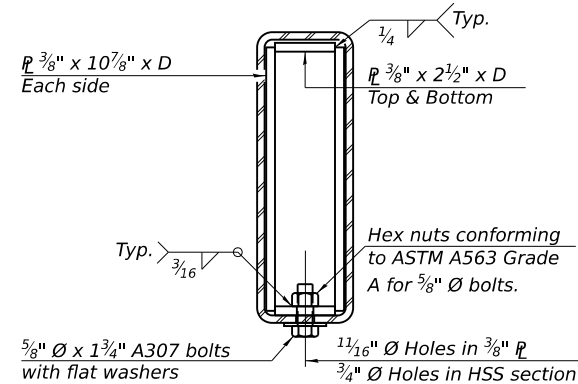
RAILING CRITERIA

NCHRP 350 Test Level	2
Railing Weight (plf)	50

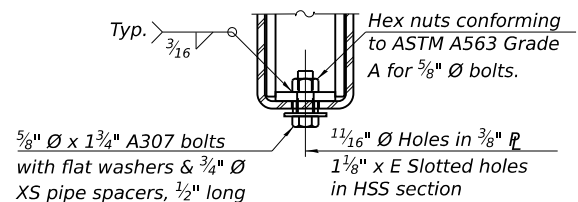


SECTION AT RAILING POST

* The outermost longitudinal reinforcement bar shall be placed directly above the studs of the rail post anchorage assembly. The anchorage studs may be bent down 1/2" to accommodate the top reinforcement bar placement.



SECTION AT RAIL SPLICE

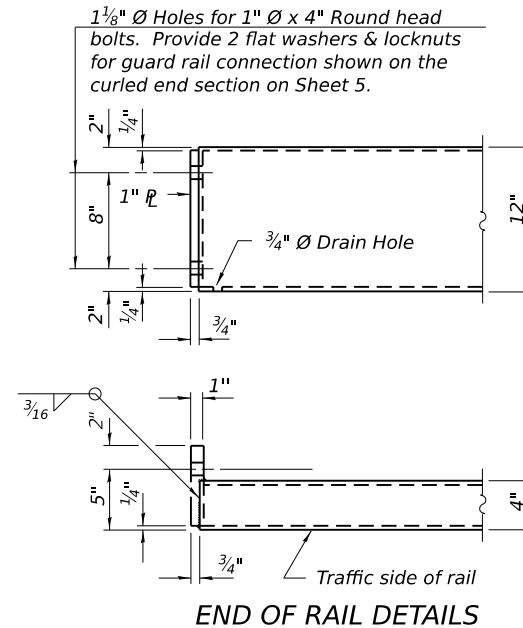


RAIL SPLICE CONNECTION AT EXPANSION JT.

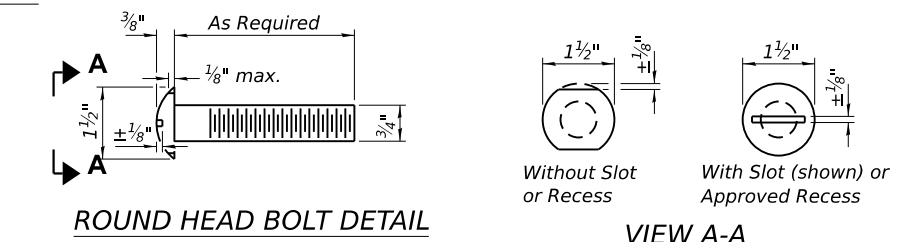
SPLICE DIMENSIONS

Location	T	A	B	C	D	E
All locs. not over exp. jts.	0	1/4"	4"	4"	1'-8"	-
Over Strip Seal Jt.	≤ 4"	2 1/2"	4 3/8"	4 3/8"	1'-10"	3 1/16"
Over Finger or Modular Jt.	≤ 9 1/2"	5 1/2"	7 3/8"	7 1/4"	2'-9 1/4"	5 13/16"
Over Finger or Modular Jt.	≤ 15"	8 1/4"	10 1/8"	10"	3'-8 1/4"	8 9/16"

T = ; total movement along centerline of roadway at expansion joint.

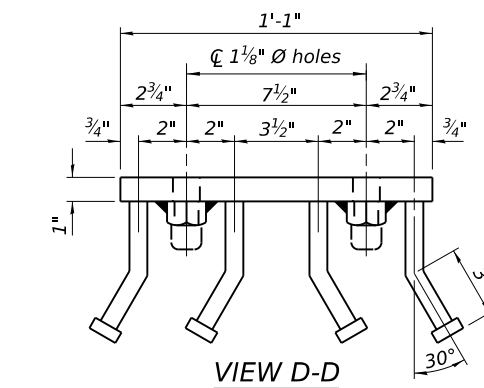


END OF RAIL DETAILS

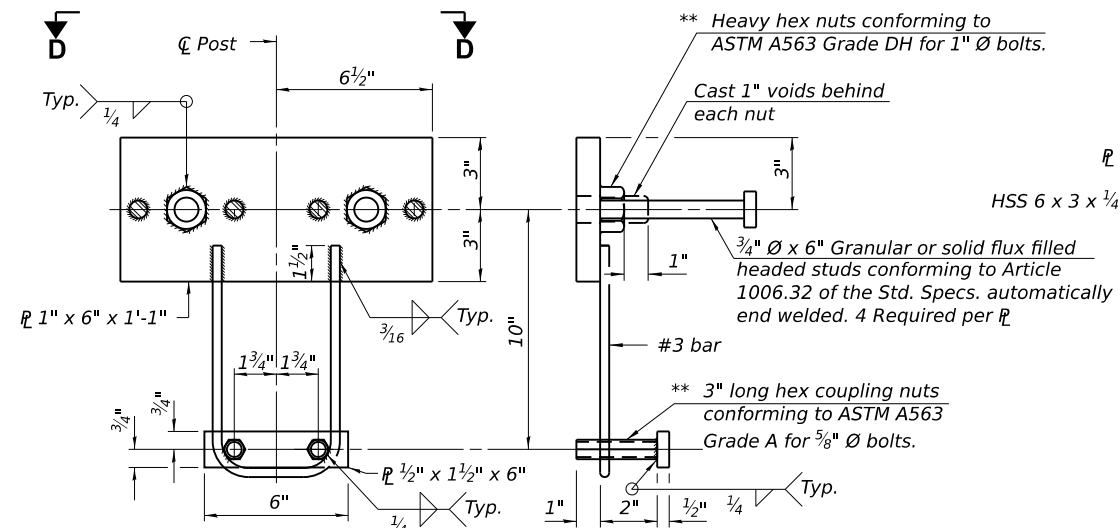


ROUND HEAD BOLT DETAIL

VIEW A-A



VIEW D-D

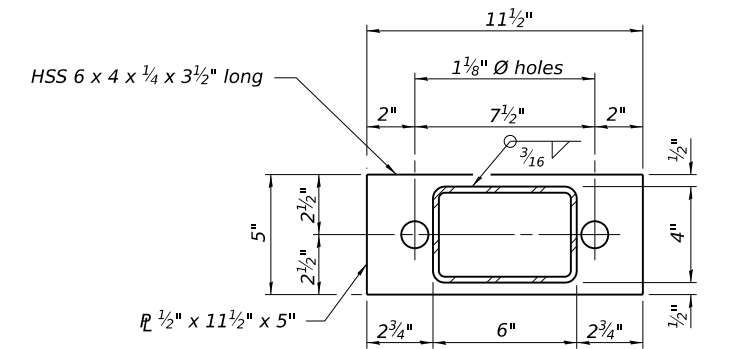


ANCHORAGE ASSEMBLY

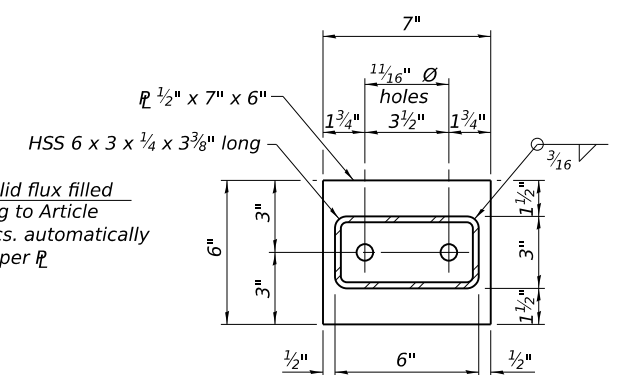
** Threaded areas shall be plugged or blocked off during casting of concrete.

Notes:

1. A sufficient number of shims of various thicknesses, sized to fit behind the top spacer assembly, 5" x 1 1/2", and bottom spacer assembly, 6" x 7", shall be provided to adjust posts for proper alignment. If the summation of shims is greater than 1/4" (top) or 1/2" (bottom), longer bolts are required. Cost included with Steel Railing, Type S-1.
2. All steel rail elements including shims shall be galvanized according to Article 509.05 of the Standard Specifications.
3. All HSS tubing shall be CVN tested according to Article 1006.34(b) of the Standard Specifications.
4. Rail splice inserts may be built out of 2-3/8" bent plates in lieu of the 4 plate rail splice inserts shown, provided the outside dimensions are matched.
5. All round head bolts shall be ASTM A307 with locknuts according to ASTM A563 grade A.



TOP SPACER ASSEMBLY



BOTTOM SPACER ASSEMBLY

BILL OF MATERIAL

Item	Unit	Quantity
Steel Railing, Type S-1	Foot	102

FILE NAME: C:\SP\WHKS & CO\Jobs-Spring - Projects\Champaign County\0768 Champaign Co. TR 312 over Stream\CADD\10.L2\CADD Data\Bridges\N010_4028.dgn



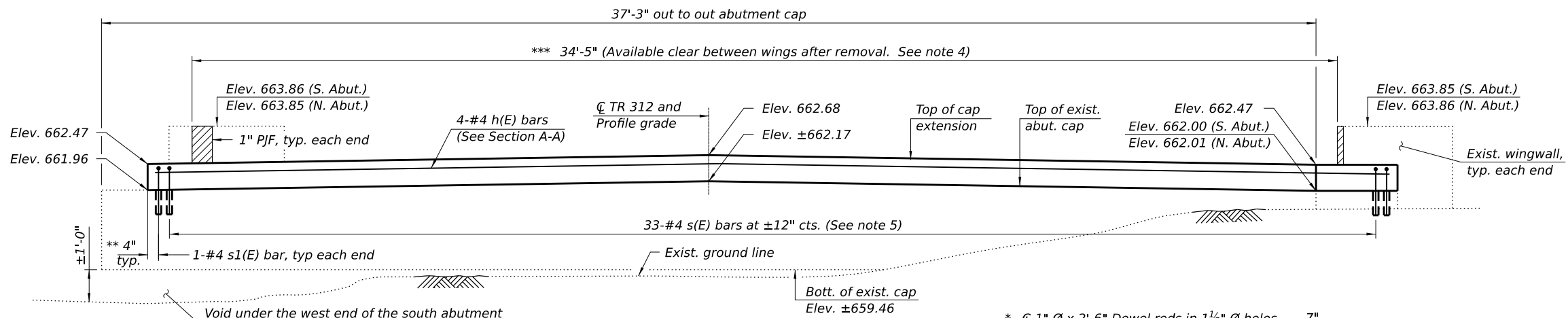
USER NAME = dheberling	DESIGNED - JLM	REVISED -
PLOT DATE = 3/11/2024	CHECKED - GEM	REVISED -
PLOT DATE = 10:04:58 AM	DRAWN - DLH / JLM	REVISED -
	CHECKED - JLM / SBC	REVISED -

CHAMPAIGN COUNTY HIGHWAY DEPARTMENT

STEEL RAILING, TYPE S-1
STRUCTURE NO. 010-4028

SHEET 6 OF 11 SHEETS

TR RTE.	SECTION	COUNTY	TOTAL SHEETS	SHEET NO.
312	23-17132-00-BR	CHAMPAIGN	19	14
CONTRACT NO. 91647				
ILLINOIS FED. AID PROJECT				



ABUTMENT ELEVATION

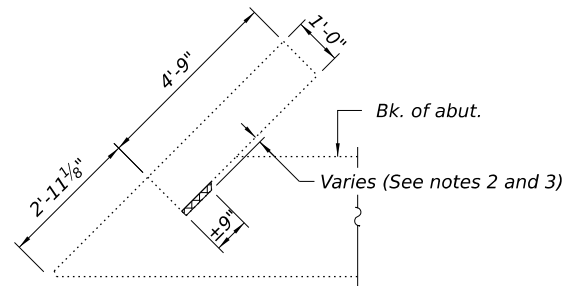
(South abutment shown. North abutment similar, unless otherwise noted.)

** See Abutment Details

*** Dimension determined from the existing plans and shall be field verified by the Contractor prior to superstructure installation. (See Abutment Details)

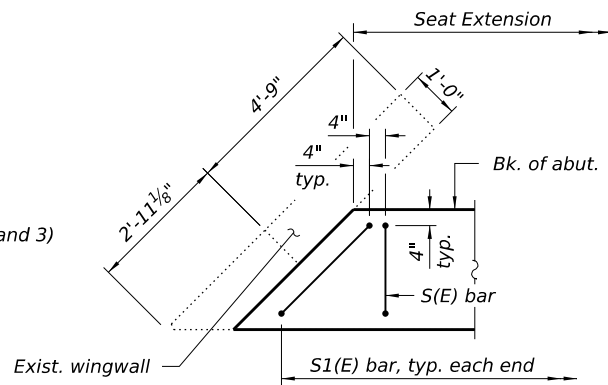
LEGEND

Limits of Concrete Removal

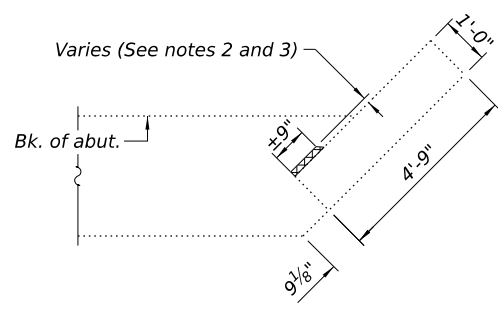


Plan Showing Wingwall Removal

(Showing South Abutment, East End. North Abutment, West End Similar.)

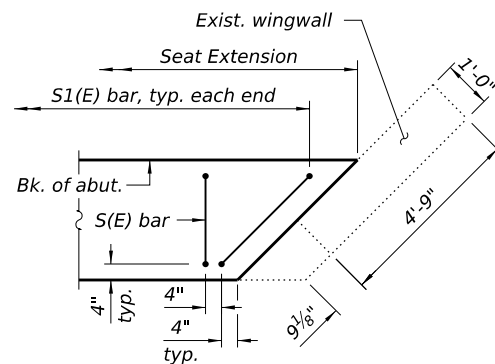


Plan Showing New Seat Extension



Plan Showing Wingwall Removal

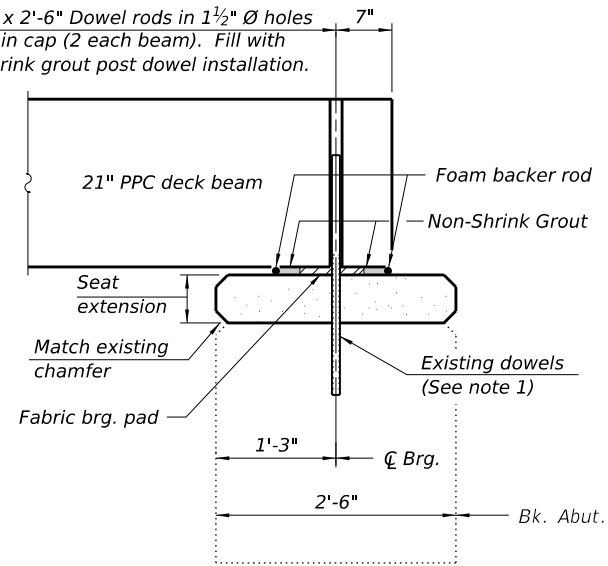
(Showing South Abutment, West End. North Abutment, East End Similar.)



Plan Showing New Seat Extension

ABUTMENT DETAILS

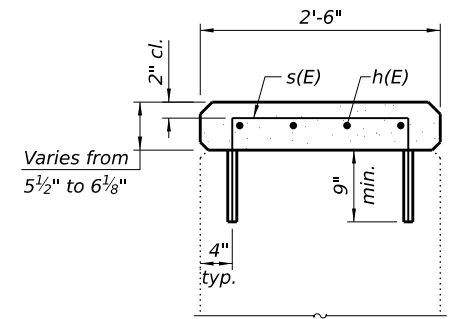
* \varnothing 1" \times 2'-6" Dowel rods in 1 1/2" \varnothing holes drilled in cap (2 each beam). Fill with non-shrink grout post dowel installation.



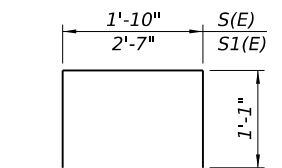
SECTION THRU ABUTMENT

(Dimensions are at Rt. Δ 's)

* If the contractor encounters any conflicts with existing dowel rods, contact the Engineer of Record for further disposition.



SECTION A-A
(Dimensions are at Rt. Δ 's)



BAR s(E) & s1(E)

Notes:

1. Burn existing dowels flush with top of cap. Grind existing dowels smooth and seal with epoxy. Epoxy used shall be approved by the Engineer. Cost is included with Removal of Existing Superstructure.
2. Burn any existing reinforcement extending into the wingwall concrete removal limits flush with the remaining concrete surface. Grind existing reinforcement smooth and seal with epoxy. Epoxy used shall be approved by the Engineer. Cost included with Concrete Removal.
3. Removal of the wingwalls shall be completed in a manner such that the removal is the minimum necessary to allow for installation of the new superstructure as detailed herein. The Contractor shall provide sawing equipment adequate in size and horsepower to complete the required full-depth sawing operation. Chipping and/or hydraulic hammers are not allowed along the vertical wingwall removal lines. The resulting vertical surface of the wingwalls after concrete removal operations shall be smooth and plumb.
4. The thickness of the preformed joint filler (PPF) may be increased if the expansion gap between exterior beams and wing walls are larger than anticipate after concrete removal operations. Cost included with Precast Prestressed Concrete Deck Beams (21" Depth).
5. Drill and grout s(E) and s1(E) bars in accordance with Article 584 of the Standard Specification. Cost included with Reinforcing Bars, Epoxy Coated.

BILL OF MATERIAL

(1 Abutment)

Bar	No.	Size	Length	Shape
h(E)	4	#4	34'-1"	—
s(E)	33	#4	2'-11"	□
s1(E)	2	#4	3'-8"	□
# Concrete Removal			Cu. Yd.	0.1
Concrete Structures			Cu. Yd.	1.5
Reinforcement Bars, Epoxy Coated			Pound	170
Controlled Low Strength Material			Cu. Yd.	29.4

Concrete Removal only anticipated at South Abutment.

FILE NAME: C:\SP\WHKS & COL\Jobs-Spring - Projects\Champaign County\0768 Champaign Co. TR 312 over Stream\CADD10.12\CADD Data\Bridges\N010_4028.dgn



USER NAME = dheberling	DESIGNED - JLM	REVISED -
	CHECKED - GEM	REVISED -
PLOT DATE = 3/11/2024	DRAWN - DLH / JLM	REVISED -
PLOT DATE = 10:04:58 AM	CHECKED - JLM / SBC	REVISED -

CHAMPAIGN COUNTY HIGHWAY DEPARTMENT

**SUBSTRUCTURE DETAILS
STRUCTURE NO. 010-4028**

SHEET 7 OF 11 SHEETS

TR RTE.	SECTION	COUNTY	TOTAL SHEETS	SHEET NO.
312	23-17132-00-BR	CHAMPAIGN	19	15
CONTRACT NO. 91647				
ILLINOIS		FED. AID PROJECT		

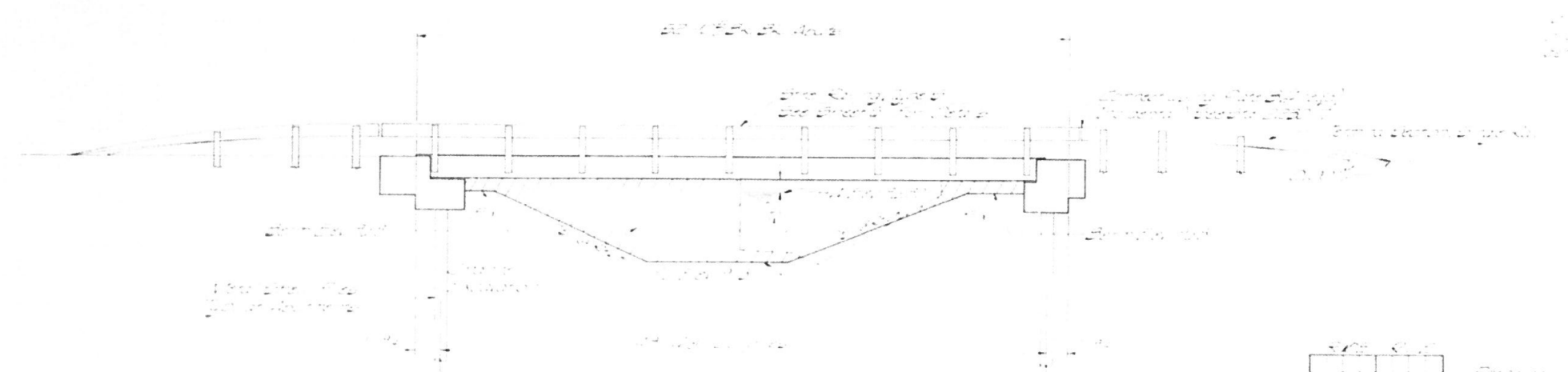
S.M. - Check in S.M. original
 8441 Sta 9+95.5 Elev. 101.00 (Assumed)

Existing Structure - One span T-Beam bridge
 with timber deck, abutments, approach
 and wingwalls. The Contractor shall remove
 before constructing new bridge.

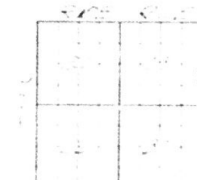
ROUTE NO.	SEC.	COUNTY	TOTAL SHEETS	SHEET NO.
23	17132-00-BR	CHAMPAIGN	19	16
ROAD DIST. 0.0000				

GENERAL NOTES

1. All dimensions are to be verified by the contractor before construction.
 2. The contractor shall be responsible for obtaining all necessary permits.
 3. The contractor shall be responsible for obtaining all necessary easements.
 4. The contractor shall be responsible for obtaining all necessary utility easements.
 5. The contractor shall be responsible for obtaining all necessary right-of-way easements.



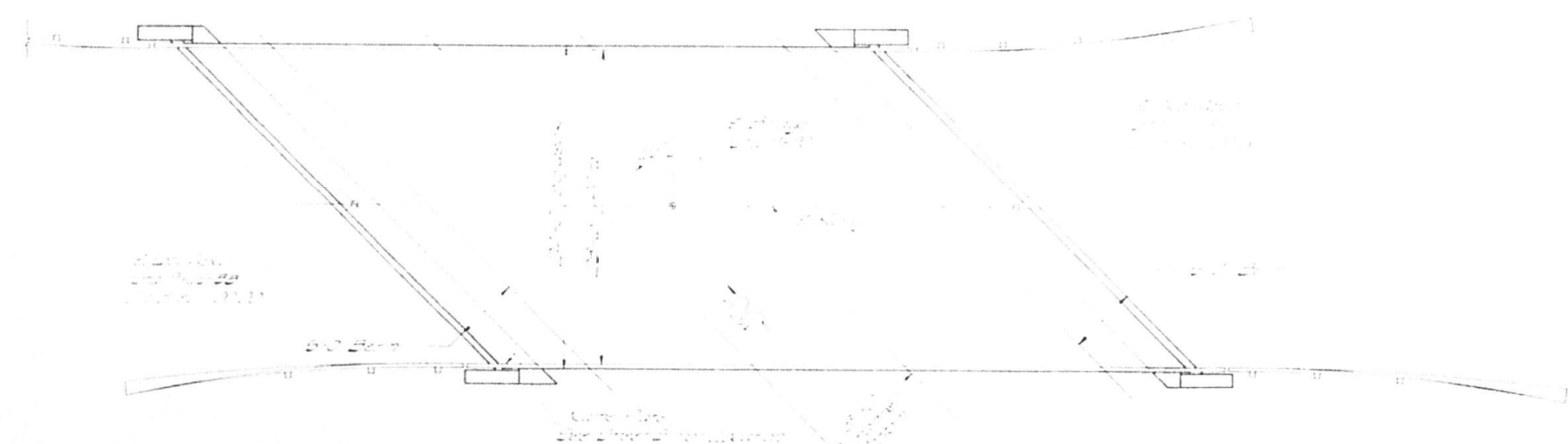
ELEVATION



LOCATION PLAN

LETTERING FOR NAME PLATE

LETTERING FOR NAME PLATE



PLAN

TOTAL BILL OF MATERIAL

ITEM	UNIT	QUANTITY	PRICE	TOTAL
Concrete	cu yd	100	100	10000
Reinforcing Steel	lbs	1000	100	100000
Timber Deck	sq ft	1000	100	100000
Abutment	sq ft	100	100	10000
Wingwall	sq ft	100	100	10000
Approach	sq ft	100	100	10000
Other				
TOTAL				

WATERWAY DATA

Channel width: 20' - 0"
 Channel depth: 10' - 0"
 Channel slope: 1:1
 Channel material: Concrete

DESIGN STRESSES

Design stresses for concrete and steel reinforcement. Includes values for compression, tension, and shear stresses.

GENERAL PLAN AND ELEVATION
 SECTION CAB 13-73
 OGDEN ROAD DISTRICT
 CHAMPAIGN COUNTY
 STATION 9+90

COLLINS AND RICE
 CONSULTING ENGINEERS

DESIGNED: JLM
 CHECKED: JLM
 DRAWN: JLM

CHECKED: JLM
 DATE: 8/24/23 BY: JLM

FILE NAME: C:\SP\WHKS & COLLABS\Spring - Projects\Champaign County\9768 Champaign Co. TR 312 over Stream\CADD\10.12\CADD Data\Bridges\N010_4028.dgn

design firm
 no. 184001036

whks
 engineers + planners + land surveyors

USER NAME = dheberling	DESIGNED - JLM	REVISED -
	CHECKED - GEM	REVISED -
PLOT DATE = 3/11/2024	DRAWN - DLH / JLM	REVISED -
PLOT DATE = 10:04:59 AM	CHECKED - JLM / SBC	REVISED -

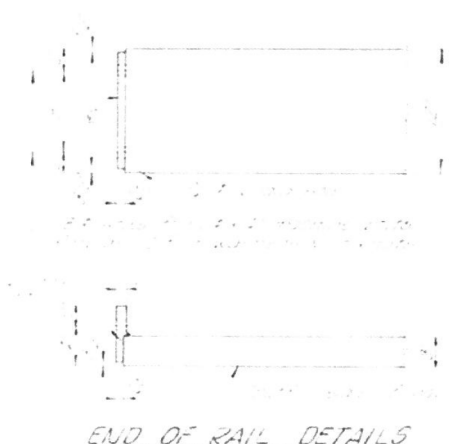
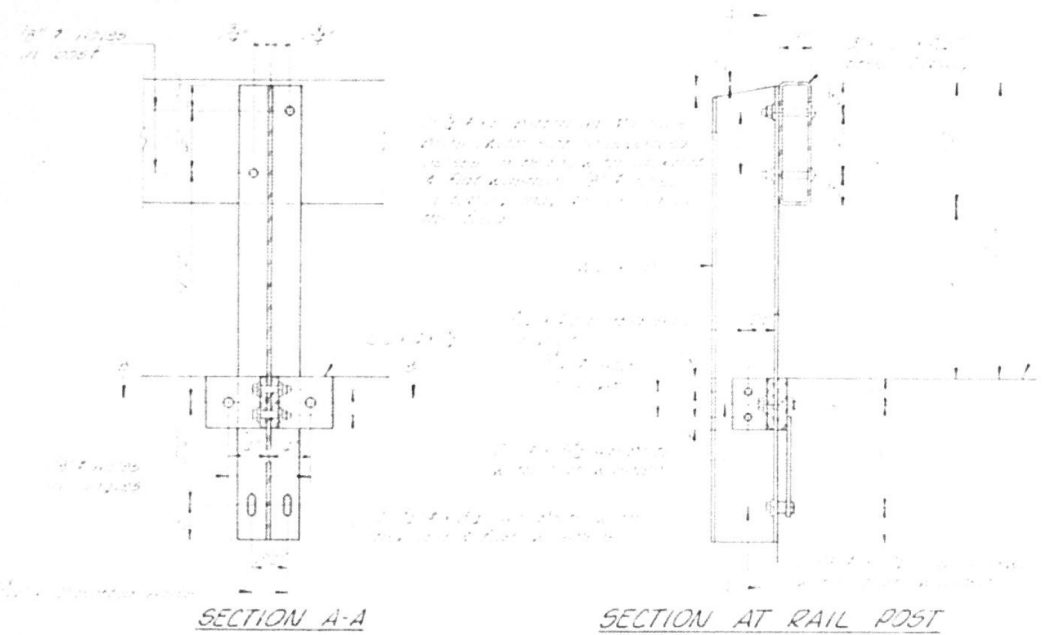
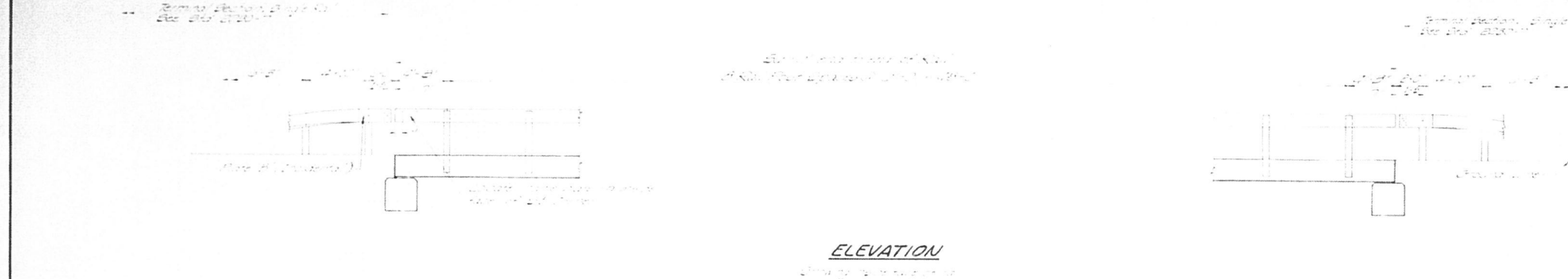
CHAMPAIGN COUNTY HIGHWAY DEPARTMENT

EXISTING PLANS (FOR INFORMATION ONLY)
STRUCTURE NO. 010-4028

SHEET 8 OF 11 SHEETS

TR. RTE.	SECTION	COUNTY	TOTAL SHEETS	SHEET NO.
312	23-17132-00-BR	CHAMPAIGN	19	16
CONTRACT NO. 91647				
ILLINOIS FED. AID PROJECT				

ROUTE NO.	SEC.	COUNTY	TOTAL SHEETS	SHEET NO.
112	1	CHAMPAIGN	19	18



NOTES

1. This structure shall comply with the requirements of AASHTO M 288 and shall be fabricated from steel tubing.

2. The railing shall be fabricated from steel tubing with a minimum yield strength of 42,000 psi and a minimum tensile strength of 58,000 psi.

3. The railing shall be fabricated from steel tubing with a minimum wall thickness of 0.1875 inches.

4. The railing shall be fabricated from steel tubing with a minimum diameter of 4.5 inches.

5. The railing shall be fabricated from steel tubing with a minimum length of 10 feet.

6. The railing shall be fabricated from steel tubing with a minimum height of 42 inches.

7. The railing shall be fabricated from steel tubing with a minimum spacing of 4 feet between posts.

8. The railing shall be fabricated from steel tubing with a minimum spacing of 2 feet between rails.

9. The railing shall be fabricated from steel tubing with a minimum spacing of 1/2 inch between rails.

10. The railing shall be fabricated from steel tubing with a minimum spacing of 1/4 inch between rails.

11. The railing shall be fabricated from steel tubing with a minimum spacing of 1/8 inch between rails.

12. The railing shall be fabricated from steel tubing with a minimum spacing of 1/16 inch between rails.

13. The railing shall be fabricated from steel tubing with a minimum spacing of 1/32 inch between rails.

14. The railing shall be fabricated from steel tubing with a minimum spacing of 1/64 inch between rails.

15. The railing shall be fabricated from steel tubing with a minimum spacing of 1/128 inch between rails.

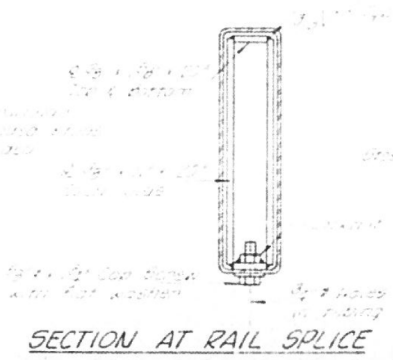
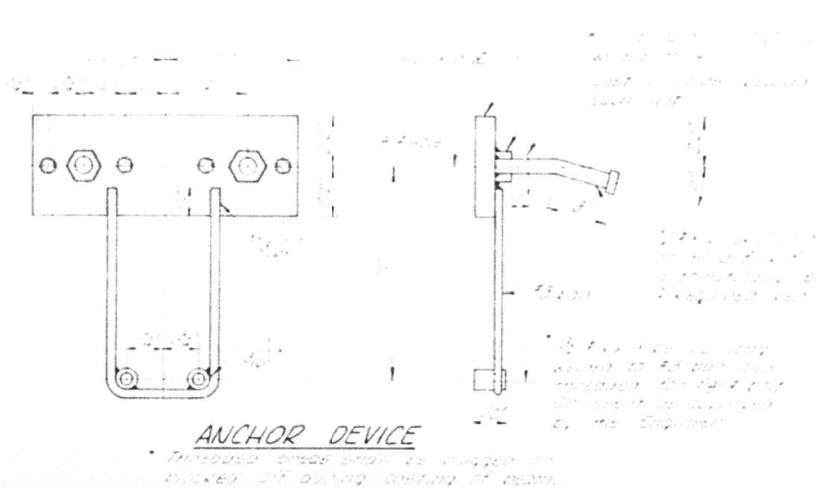
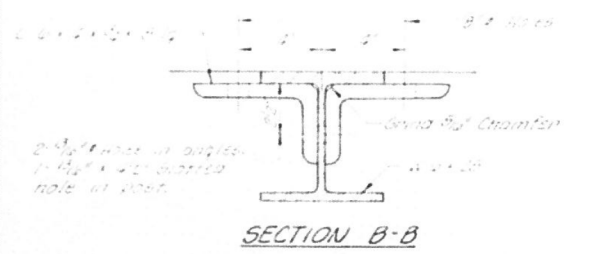
16. The railing shall be fabricated from steel tubing with a minimum spacing of 1/256 inch between rails.

17. The railing shall be fabricated from steel tubing with a minimum spacing of 1/512 inch between rails.

18. The railing shall be fabricated from steel tubing with a minimum spacing of 1/1024 inch between rails.

19. The railing shall be fabricated from steel tubing with a minimum spacing of 1/2048 inch between rails.

20. The railing shall be fabricated from steel tubing with a minimum spacing of 1/4096 inch between rails.



BILL OF MATERIAL

Item	Unit	Quantity
Steel Railing, Type S	Lin. Ft.	112

STEEL RAILING, TYPE S

SECTION CAB 13-73
OGDEN ROAD DISTRICT
CHAMPAIGN COUNTY
STATION 9+90

COLLINS AND RICE
CONSULTING ENGINEERS

DESIGNED: MJB CHECKED: MJB
DATE: 4-22-23 NO: 257

FILE NAME: C:\SP\WHKS & COLLABS\Spring - Projects\Champaign County\9768 Champaign Co. TR 312 over Stream\CADD\10.12\CADD Data\Bridges\N010_4028.dgn

whks
engineers + planners + land surveyors

USER NAME = dheberling	DESIGNED - JLM	REVISED -
PLOT DATE = 3/11/2024	CHECKED - GEM	REVISED -
PLOT DATE = 10:05:08 AM	DRAWN - DLH / JLM	REVISED -
	CHECKED - JLM / SBC	REVISED -

CHAMPAIGN COUNTY HIGHWAY DEPARTMENT

EXISTING PLANS (FOR INFORMATION ONLY)
STRUCTURE NO. 010-4028

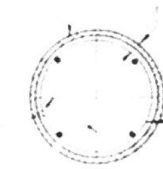
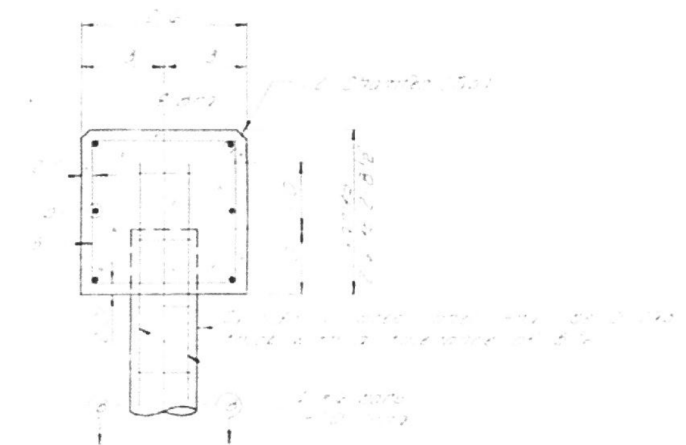
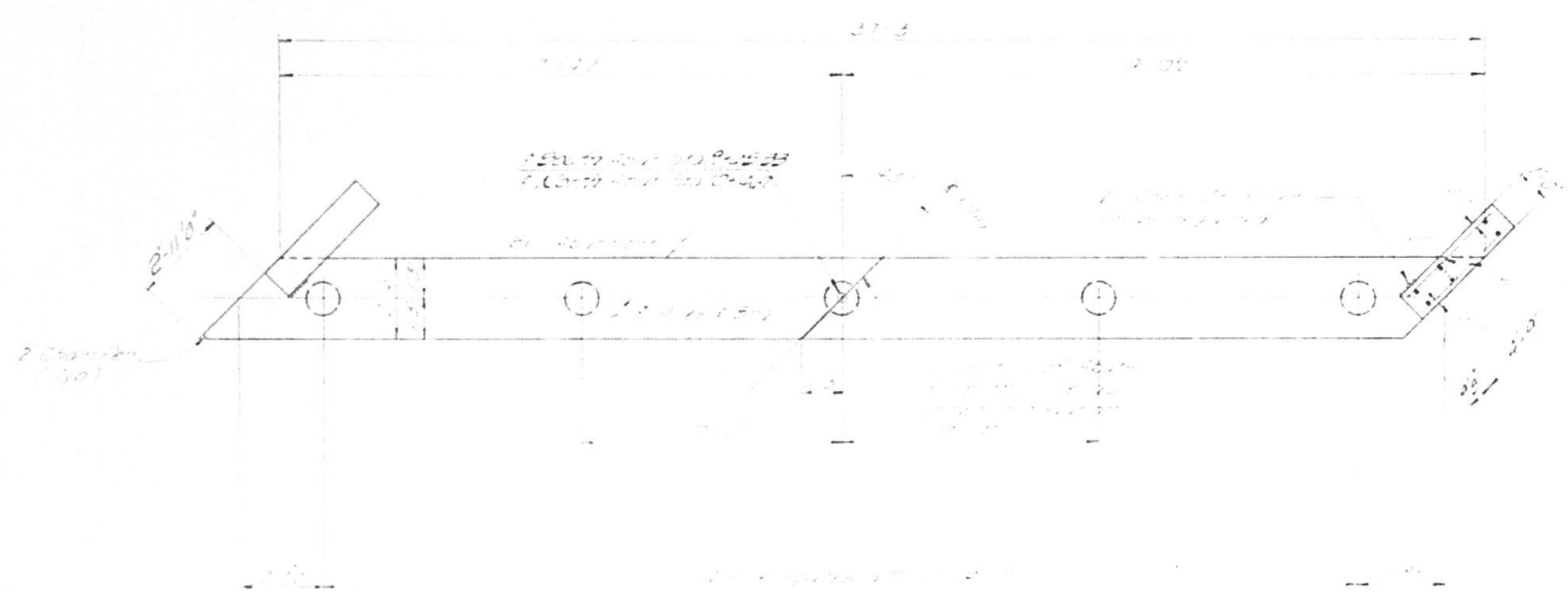
SHEET 10 OF 11 SHEETS

TR RTE.	SECTION	COUNTY	TOTAL SHEETS	SHEET NO.
312	23-17132-00-BR	CHAMPAIGN	19	18

CONTRACT NO. 91647

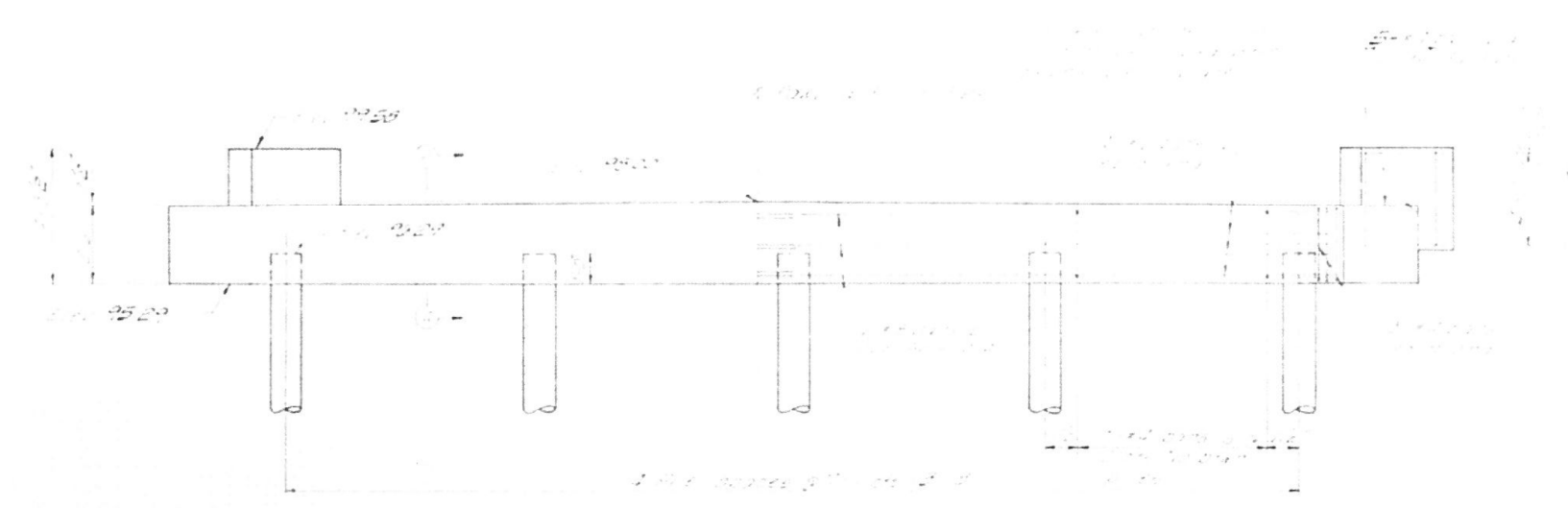
ILLINOIS FED. AID PROJECT

ROUTE NO.	SEC.	COUNTY	TOTAL SHEETS	SHEET NO.
13-73		CHAMPAIGN	19	19
ROAD DIST. 0+000				



PILE DATA

27" dia.	25' long
25" dia.	25' long



BILL OF MATERIAL - 2 ABUTS

27" dia.	25' long	2
25" dia.	25' long	2

ABUTMENTS
SECTION C A B 13-73
OGDEN ROAD DISTRICT
CHAMPAIGN COUNTY
STATION 9+90
COLLINS AND RICE
CONSULTING ENGINEERS

DESIGNED: F.S.
CHECKED: L.R.
DATE: 08-13-05

FILE NAME: C:\SP\WHKS & COL\Jobs-Spring - Projects\Champaign County\0768 Champaign Co. TR 312 over Stream\CADD\10.12\CADD Data\Bridges\N010_4028.dgn

design firm
no. 184001036

engineers + planners + land surveyors

USER NAME = dheberling	DESIGNED - JLM	REVISED -
	CHECKED - GEM	REVISED -
PLOT DATE = 3/11/2024	DRAWN - DLH / JLM	REVISED -
PLOT DATE = 10:05:13 AM	CHECKED - JLM / SBC	REVISED -

CHAMPAIGN COUNTY HIGHWAY DEPARTMENT

EXISTING PLANS (FOR INFORMATION ONLY)
STRUCTURE NO. 010-4028

SHEET 11 OF 11 SHEETS

TR. RTE.	SECTION	COUNTY	TOTAL SHEETS	SHEET NO.
312	23-17132-00-BR	CHAMPAIGN	19	19
CONTRACT NO. 91647				
ILLINOIS FED. AID PROJECT				