

045-0006

**STATE OF ILLINOIS
DEPARTMENT OF PUBLIC WORKS AND BUILDINGS
DIVISION OF HIGHWAYS
PLANS FOR PROPOSED
FEDERAL AID HIGHWAY**

FEDERAL AID ROUTE NO.	SEC.	COUNTY	TOTAL SHEETS	SHEET NO.
6	BR-B-1 BR-HB-3 BR-HB-4 BR-HB-5 BR-HF-5 BR-HB-6 BR-HF-6	KANE		

SCALES: PLAN 1 INCH = 50 FT.
PROFILE, HOR. 1 INCH = 20 FT.
PROFILE, VERT. 1 INCH = 10 FT.
CROSS-SECTIONS 1 INCH = 5 FT.

F.A. ROUTE 6
 SECTIONS **8R-B-1** **8R-HB-3** **8R-HB-5** **8R-HB-6**
 8R-HB-4 **8R-HF-5** **8R-HF-6**
COOK-KANE COUNTIES
PROJECT U-613(3)



LOCATION OF SECTION INDICATED THIS:-
SPECIAL COVER SHEET PREPARED FOR FEDERAL PROJECT

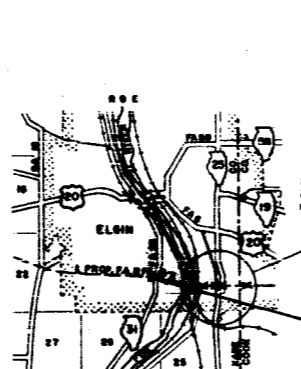
SECTION 8R-HB-3 INCLUDES:
THE CONSTRUCTION OF AN I-BEAM GRADE SEPARATION STRUCTURE (ON ILL. Rte. 9-S, STATE STREET-OVER F.A. Rte. 6) NEAR THE INTERSECTION OF S. STATE STREET & SOUSTER AVENUE IN THE CITY OF EGIN. ONE SPAN A 67'-2" (BETW. OF ABUTMENTS 71'-10 1/2") AND THE FURNISHING, FABRICATING, SHOP PAINTING, AND DELIVERY OF THE STRUCTURAL STEEL. ALSO INCLUDES THE RECONSTRUCTION OF S. STATE STREET, EGIN STATE HOSPITAL ENTRANCE AND SERVICE DRIVE, STORM SEWERS, AND OTHER APPURTENANCES.

SECTION 8R-HB-4 INCLUDES:
THE CONSTRUCTION OF AN I-BEAM GRADE SEPARATION STRUCTURE (ON F.A. Rte. 6 OVER RAYMOND STREET) NEAR THE INTERSECTION OF RAYMOND & RUSSELL STREETS IN THE CITY OF EGIN. SPANS ONE 48'-0" & TWO 48'-9" AT STA. 207+21.04. ALSO INCLUDES THE RECONSTRUCTION OF RAYMOND & DWIGHT STREETS INVOLVING RETAINING WALLS, STORM SEWERS, AND OTHER APPURTENANCES.

SECTION 8R-HB-5 INCLUDES:
THE CONSTRUCTION OF AN I-BEAM GRADE SEPARATION BRIDGE (ON F.A. Rte. 6 OVER LIBERTY STREET (ILL. Rte. 25) NEAR THE INTERSECTION OF LIBERTY AND RUSSELL STREETS IN THE CITY OF EGIN. SPANS ONE AT 65'-0" AND TWO AT 37'-6" AT STA. 221+35.26 WITH THE EXCEPTION OF FURNISHING, FABRICATING, SHOP PAINTING, AND DELIVERY OF THE STRUCTURAL STEEL AS SPECIFIED BELOW.

SECTION 8R-HF-6 INCLUDES:
FURNISHING, FABRICATING, SHOP PAINTING AND DELIVERY OF THE STRUCTURAL STEEL AS SPECIFIED IN THE ILL. F.A. Rte. 6 OVER LIBERTY STREET (ILL. Rte. 25) NEAR THE INTERSECTION OF LIBERTY AND RUSSELL STREETS IN THE CITY OF EGIN. SPANS ONE AT 65'-0" AND TWO AT 37'-6" AT STA. 221+35.26.

NOTE:
STRUCTURAL STEEL SHALL BE DELIVERED F.O.B. NATIONAL STREET 30'AWAY IN THE CITY OF EGIN. OF THE CHICAGO MILWAUKEE, ST. PAUL AND PACIFIC R.R., EXCEPT THAT DELIVERY MAY BE MADE F.O.B. BRIDGE SITE BY TRUCK IF SUITABLE ARRANGEMENTS ARE MADE WITH THE CONTRACTOR FOR SECTION 8R-HB-6.



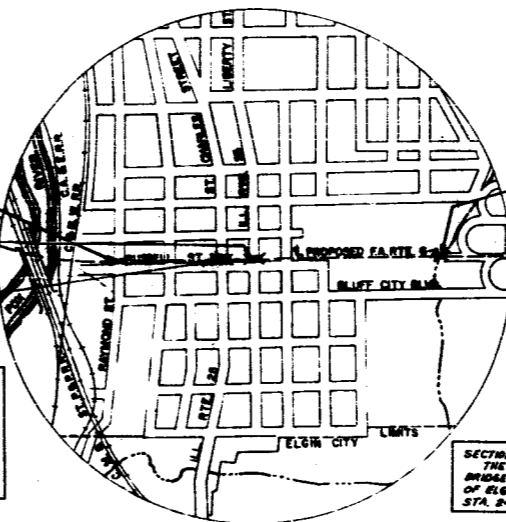
SCALE 1" = 1 MILE

- F.A. Rte. 6, Sec. 8R-HB-4 & Sta. 207+21.04
- LOCATION OF PROJECT
- F.A. Rte. 6, Sec. 8R-HB-6 & Sta. 221+35.26
- F.A. Rte. 6, Sec. 8R-HB-5 & Sta. 220+04.90
- F.A. Rte. 6, Sec. 8R-HB-3 & Sta. 176+28.26

SECTION 8R-HB-6 INCLUDES:
THE CONSTRUCTION OF AN I-BEAM GRADE SEPARATION BRIDGE (ON F.A. Rte. 6 OVER ST. CHARLES STREET) NEAR THE INTERSECTION OF ST. CHARLES & RUSSELL STREETS IN THE CITY OF EGIN. SPANS ONE 48'-0" & TWO 48'-9" AT STA. 220+04.90 WITH THE EXCEPTION OF FURNISHING, FABRICATING, SHOP PAINTING, AND DELIVERY OF THE STRUCTURAL STEEL AS SPECIFIED BELOW. ALSO INCLUDES THE CONSTRUCTION OF RETAINING WALLS AND SERVICE DRENCHES, STA. 220+11 TO STA. 220+20.

SECTION 8R-HF-5 INCLUDES:
THE FURNISHING, FABRICATING, SHOP PAINTING, AND DELIVERY OF THE STRUCTURAL STEEL AS SPECIFIED IN THE ILL. F.A. Rte. 6 OVER ST. CHARLES STREET (ILL. Rte. 25) NEAR THE INTERSECTION OF ST. CHARLES & RUSSELL STREETS IN THE CITY OF EGIN. SPANS ONE 48'-0" & TWO 48'-9" AT STA. 220+04.90.

NOTE:
STRUCTURAL STEEL SHALL BE DELIVERED F.O.B. NATIONAL STREET 30'AWAY IN THE CITY OF EGIN. OF THE CHICAGO MILWAUKEE, ST. PAUL AND PACIFIC R.R., EXCEPT THAT DELIVERY MAY BE MADE F.O.B. BRIDGE SITE BY TRUCK IF SUITABLE ARRANGEMENTS ARE MADE WITH THE CONTRACTOR FOR SECTION 8R-HB-5.



SECTION 8R-B-1 INCLUDES:
THE CONSTRUCTION OF AN I-BEAM GRADE SEPARATION BRIDGE (ON F.A. Rte. 6 OVER POPP AR. CREEK) BY THE CITY OF EGIN. SPANS ONE 42'-6" & TWO 36'-1" AT STA. 240+22.5.

NET LENGTH OF SECTION 8R-B-1 119.00 FT. = .022 MI.
NET LENGTH OF SECTION 8R-HB-3 1008.5 FT. = .191 MI.
NET LENGTH OF SECTION 8R-HB-4 1199 FT. = .026 MI.
NET LENGTH OF SECTION 8R-HB-5 1409.17 FT. = .030 MI.
NET LENGTH OF SECTION 8R-HB-6 1475.5 FT. = .029 MI.

STATE OF ILLINOIS
DEPARTMENT OF PUBLIC WORKS AND BUILDINGS
BUREAU OF HIGHWAYS
December 10, 1952
S. J. Maguire
March 10, 1952
A. L. Van Dyke
March 10, 1952
Blaney
March 10, 1952
A. J. Conroy
March 10, 1952
Blaney

DEPARTMENT OF COMMERCE
BUREAU OF PUBLIC ROADS
[Redacted Signature]

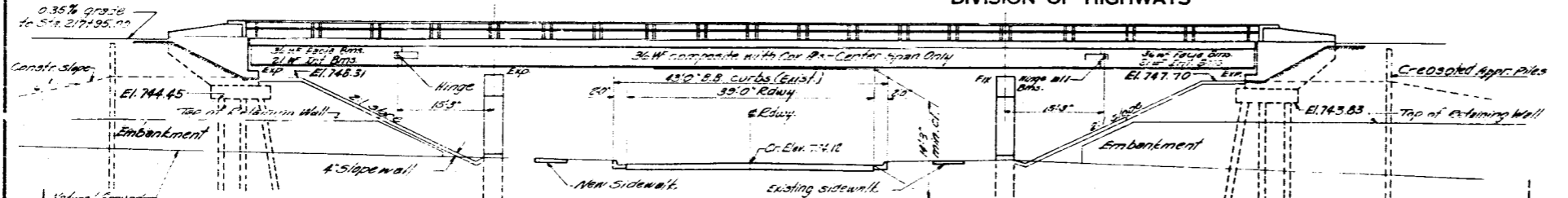
KANE COUNTY SECTIONS 8R-B-1 8R-HB-3 8R-HB-4 8R-HB-5 8R-HB-6 8R-HF-5 8R-HF-6 F.A. ROUTE 6

S.M. 21 - E. out of fire insurance N.E. corner of St. Charles & Russell Sts. - Elev. 734.67 in Existing Structure.

STATE OF ILLINOIS
DEPARTMENT OF PUBLIC WORKS & BUILDINGS
DIVISION OF HIGHWAYS

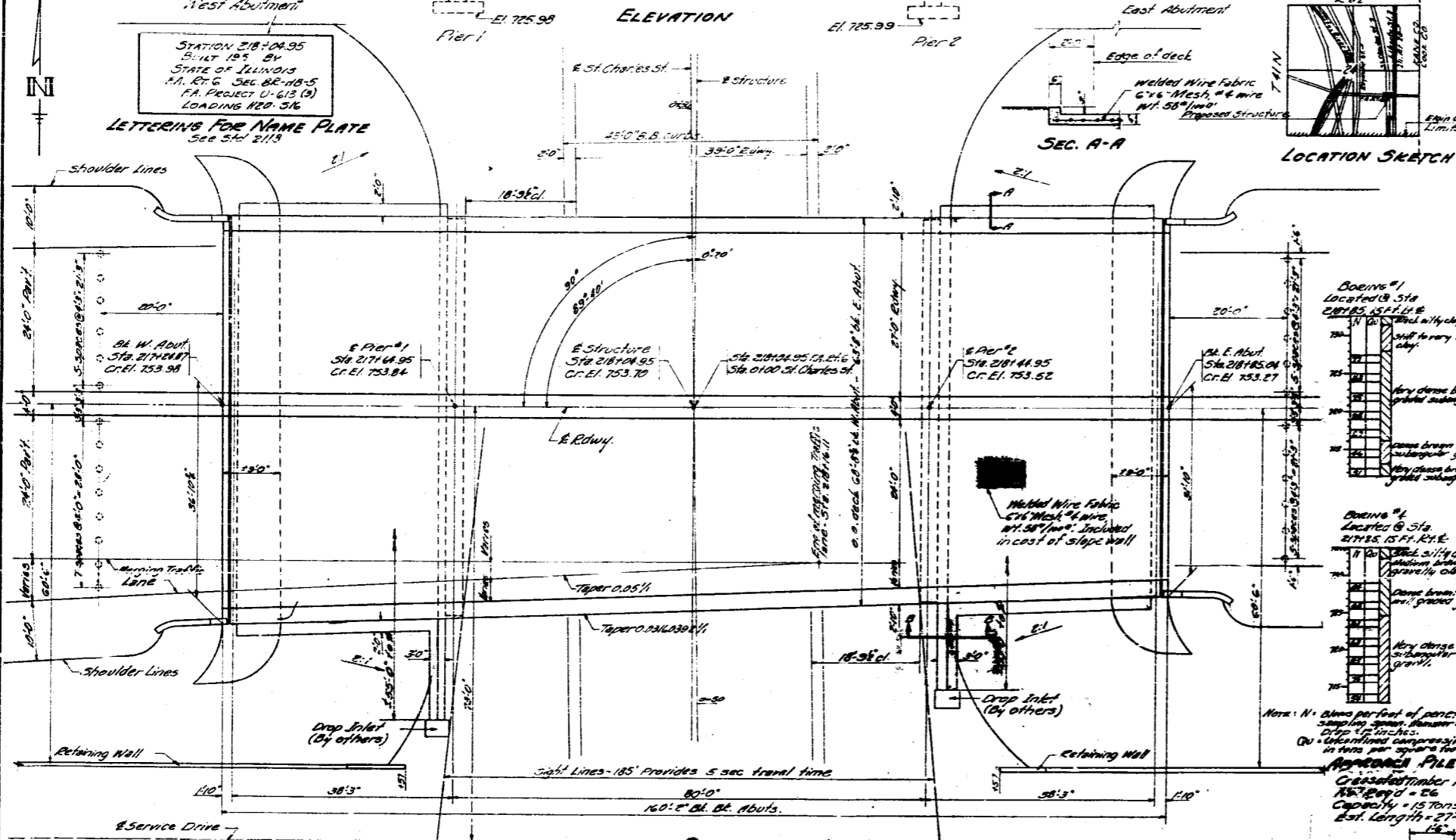
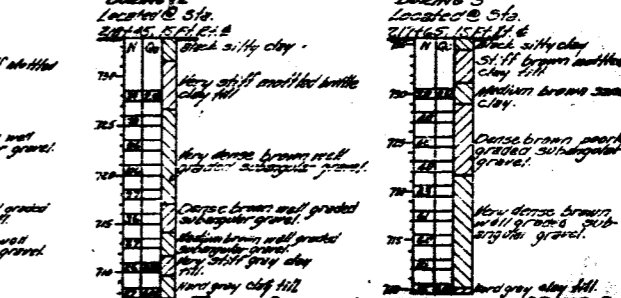
PROJECT NO.	SECTION	COUNTY	TOTAL SHEETS	SHEET NO.	SHEET NO. /
116	BR-15	KANE	22	12	// SHEETS

GENERAL NOTES
 Class X Concrete shall be used throughout except in general and posts.
 Reinforced Concrete shall be used in handrails and posts.
 The concrete floor slab shall be finished in accordance with Article 5119 of the Standard Specifications.
 Slope walls shall be reinforced with welded wire fabric 6"x6" mesh, #4 wires, weighing 58# per 100 sq. ft.
 Notes for piles in abutments shall be prepared in accordance with Article 603(c) of the Standard Spec. Piles #1 open holes #4, unless noted.
 Field connections riveted, unless noted.



All bolsters, rockers, bearing plates, lead plates, pinholes and anchor bolts shall be fabricated and set in accordance with Article 5115 of the Standard Specifications and are included in quantity of structural steel.
 Anchor bolts shall be set before riveting diaphragms over supports.
 Except as otherwise provided all structural steel shall receive one shop coat of red lead paint and two coats of aluminum paint. See articles 56.1 to 56.5 inclusive of the Standard Specifications.

The Contractor shall drive 2 conc. test piles (in permanent locations) as directed by the Engineer before ordering remainder of piles. One test pile at East Abutment and one test pile at West Abutment.
 Expansion guards shall be fabricated and erected in accordance with Article 5115 (d) of the Standard Specifications. Expansion guards are included in quantity of structural steel. Est. Wt. 1880 lbs.
 The following surfaces of expansion guards shall be given two shop coats of red lead paint; outside face of vertical leg and top faces of horizontal legs of 4"x4" L's.



Total Bill of Materials - SEC. BR-15-5

Item	Unit	Superstr.	Substr.	Total
Class X Concrete	Cu Yds	216.3	137.1	353.4
Reinforced Concrete	Cu Yds	2.0		2.0
Expansion Guards	Lbs.	1880	63.75	1943.75
Structural Steel	Lbs.	30000		30000
6" Slope Wall	Sq. Yds		633	633
Concrete Piles	Lin. Ft.	520		520
Conc. Test Piles	Each	2		2
Mini Handrail	Lin. Ft.	316		316
Class 3 Excav for Str.	Cu Yds		447	447
Borrow Excav	Cu Yds		1300	1300
Crescoped Piles	Lin. Ft.		780	780
Water Pipes	Each	One		One

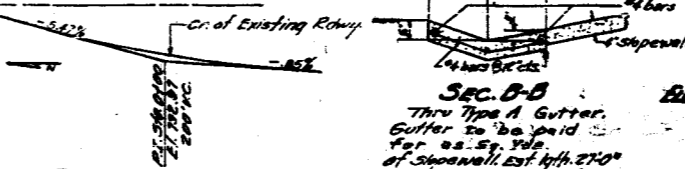
APPROACH PILE DATA
 Crescoped Timber Piles
 No. 2000 - 26
 Capacity = 15 Tons
 Est. Length = 27'-0"

DESIGNED *A.A. Lutz*
 CHECKED *T. Tamba*
 DRAWN *E. Rush*
 CHECKED *T. Tamba*

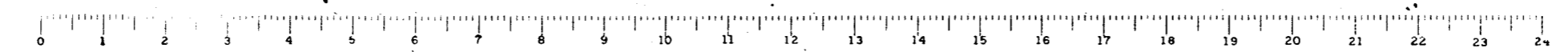
EXAMINED *M.P. [Signature]*
 PASSED *[Signature]*
 APPROVED *R.R. [Signature]*

DESIGN STRESSES
 f_c = 1000 p.s.i. (Super.)
 f_s = 20,000 p.s.i. (Rein.)
 f_s = 15,000 p.s.i. (Struct.)
 f_c = 75 p.s.i. (Pier Piles)
 Pier Pile Pressure - Max. 2.87%
 11-18 (Average 2.07%)

CURVE DATA - R.A. RT. 6

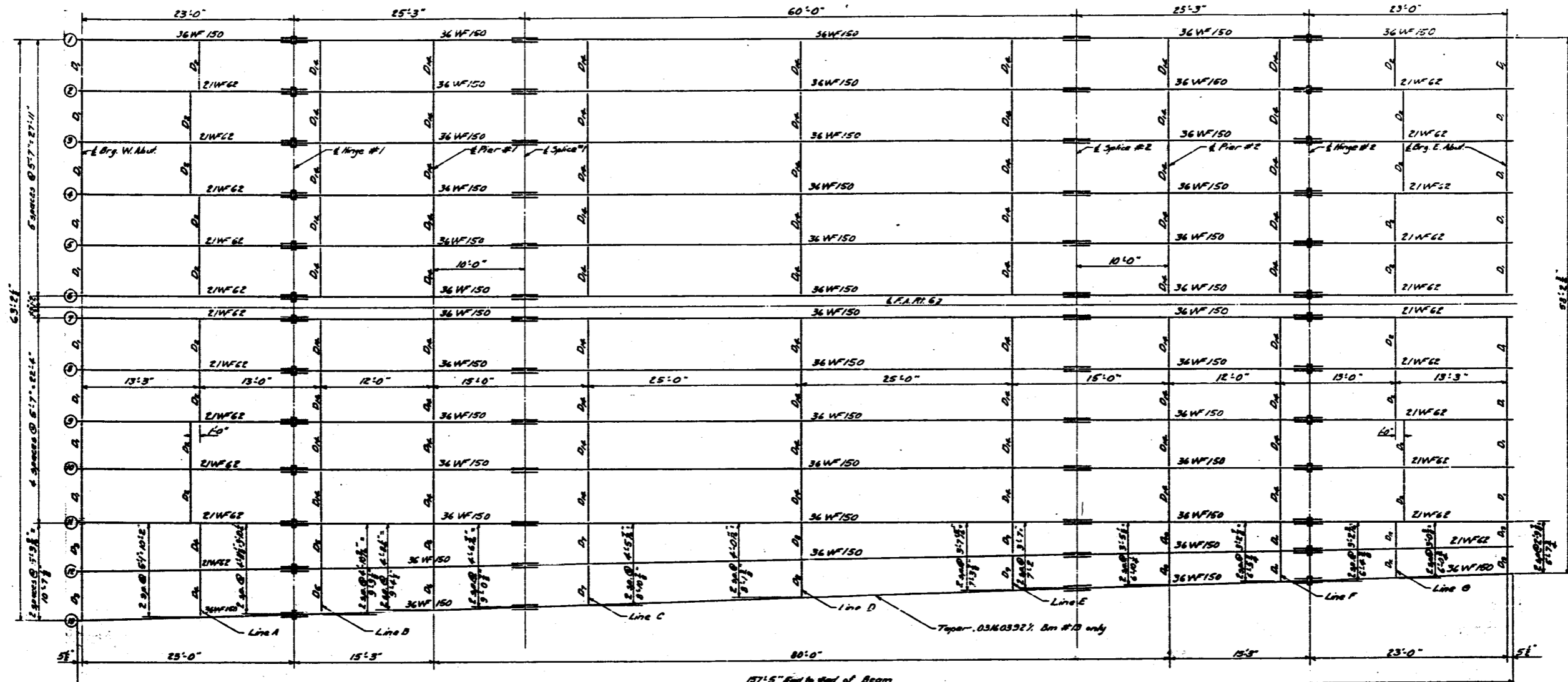


GENERAL PLAN & ELEVATION
 DRAW BY *Pass [Signature]* ST. CHARLES STREET
 PROJECT U-68(3)
 R.A. RT. 6 SEC. BR-15-5
 KANE COUNTY
 ST. CHARLES ILL.



STATE OF ILLINOIS
DEPARTMENT OF PUBLIC WORKS & BUILDINGS
DIVISION OF HIGHWAYS

PROJECT NO.	SECTION	COUNTY	TOTAL SHEETS	SHEET NO.	SHEET NO. 2
11-6	BRIDGES	KANE	22	13	11 SHEETS



ELEV. TOP OF BEAMS (FOR FABRICATION ONLY)*

Line	1	2	3	4	5	6	7	8	9	10	11	12	13
1	753.0	753.0	753.0	753.0	753.0	753.0	753.0	753.0	753.0	753.0	753.0	753.0	753.0
2	753.0	753.0	753.0	753.0	753.0	753.0	753.0	753.0	753.0	753.0	753.0	753.0	753.0
3	753.0	753.0	753.0	753.0	753.0	753.0	753.0	753.0	753.0	753.0	753.0	753.0	753.0
4	753.0	753.0	753.0	753.0	753.0	753.0	753.0	753.0	753.0	753.0	753.0	753.0	753.0
5	753.0	753.0	753.0	753.0	753.0	753.0	753.0	753.0	753.0	753.0	753.0	753.0	753.0
6	753.0	753.0	753.0	753.0	753.0	753.0	753.0	753.0	753.0	753.0	753.0	753.0	753.0
7	753.0	753.0	753.0	753.0	753.0	753.0	753.0	753.0	753.0	753.0	753.0	753.0	753.0
8	753.0	753.0	753.0	753.0	753.0	753.0	753.0	753.0	753.0	753.0	753.0	753.0	753.0
9	753.0	753.0	753.0	753.0	753.0	753.0	753.0	753.0	753.0	753.0	753.0	753.0	753.0
10	753.0	753.0	753.0	753.0	753.0	753.0	753.0	753.0	753.0	753.0	753.0	753.0	753.0
11	753.0	753.0	753.0	753.0	753.0	753.0	753.0	753.0	753.0	753.0	753.0	753.0	753.0
12	753.0	753.0	753.0	753.0	753.0	753.0	753.0	753.0	753.0	753.0	753.0	753.0	753.0
13	753.0	753.0	753.0	753.0	753.0	753.0	753.0	753.0	753.0	753.0	753.0	753.0	753.0

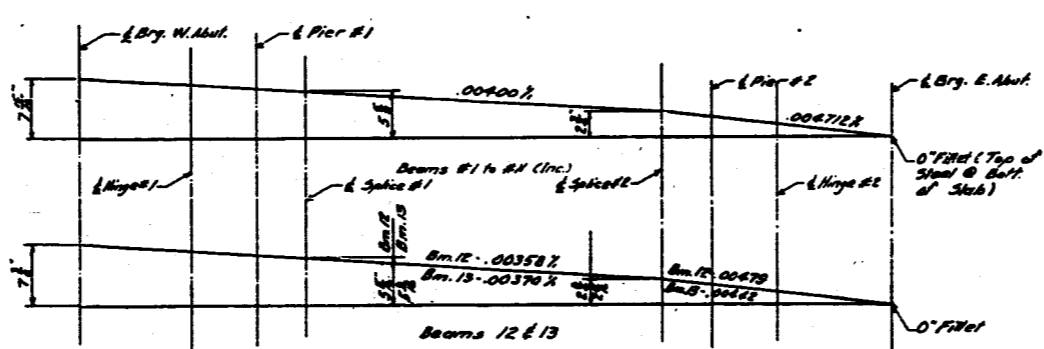
*Does not include deflection.

DESIGNED: *[Signature]*
CHECKED: T. Tanaka
DRAWN: W.A.S. J. Gans
CHECKED: T. Tanaka

EXAMINED: *[Signature]*
APPROVED: *[Signature]*

DEC. 31 1958

STRUCTURAL STEEL LAYOUT

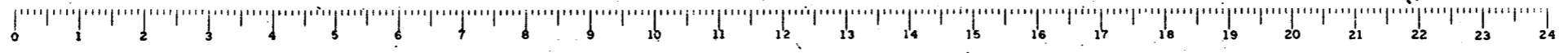


CAMBER DIAGRAM OF BEAMS

BILL OF MATERIAL

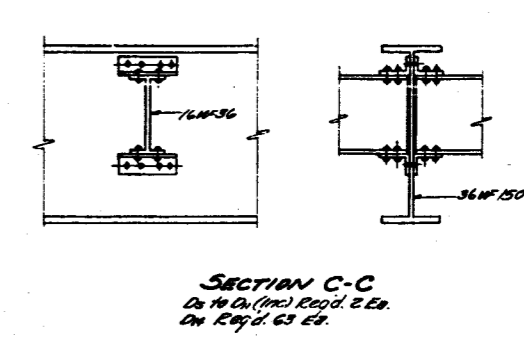
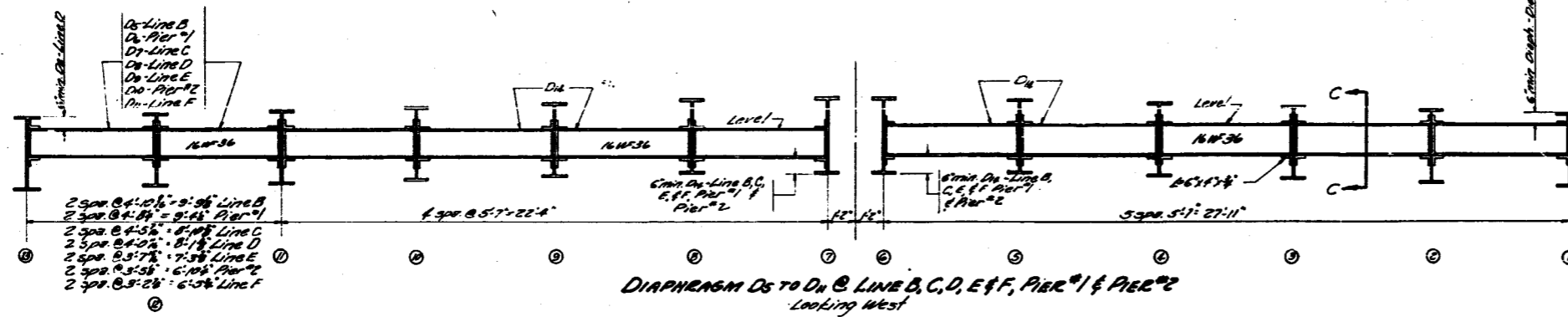
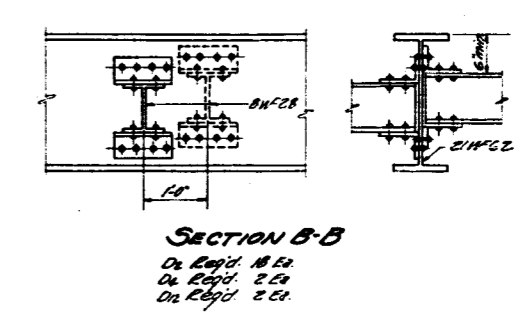
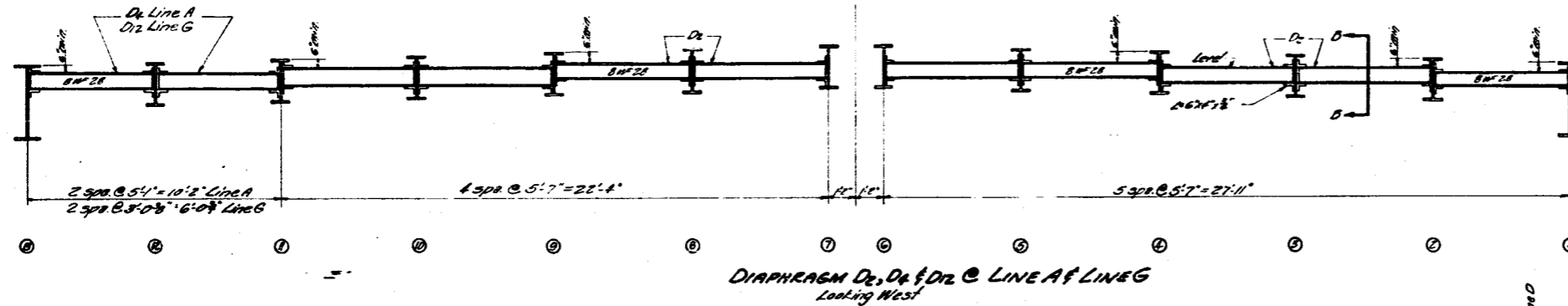
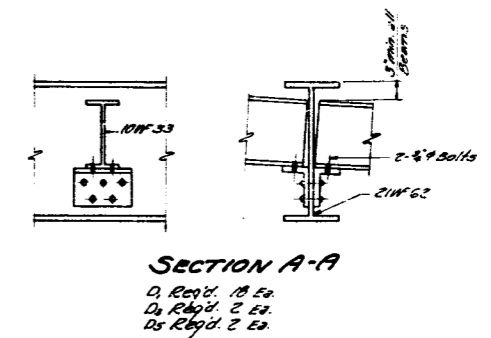
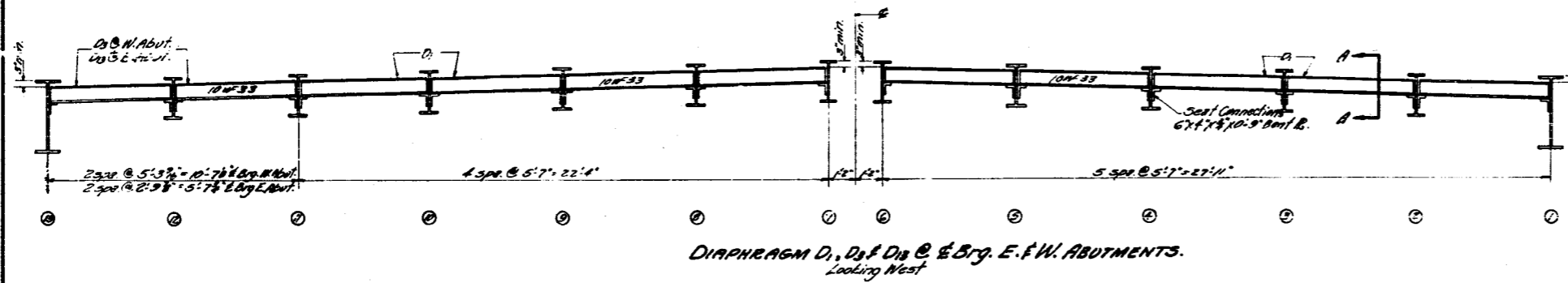
ITEM	QUANTITY	AMOUNT
Structural Steel	1.62	528.340

STRUCTURAL STEEL LAYOUT
EGIN BY-PASS OVER ST. CHARLES ST.
F.A. RT. 6 SECTION BRIND-51
KANE COUNTY
STATION 218+0.95



STATE OF ILLINOIS
DEPARTMENT OF PUBLIC WORKS & BUILDINGS
DIVISION OF HIGHWAYS

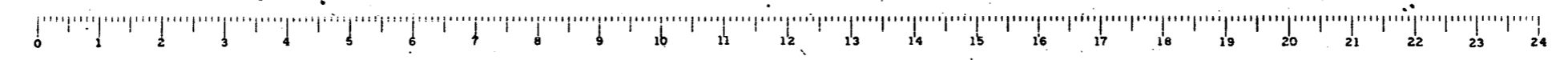
ROUTE NO.	SECTION	COUNTY	SHEET	SHEET NO.
6	BRMS	KANE	22	1A
SHEET NO. 3 11 SHEETS				



DESIGNED *H. A. Huff*
CHECKED *T. Tomala*
DRAWN *W. S. E. E. J.*
CHECKED *T. Tomala*

DATE *Dec. 31, 1953*
DRAWN *McR...*
APPROVED *R. R. ...*

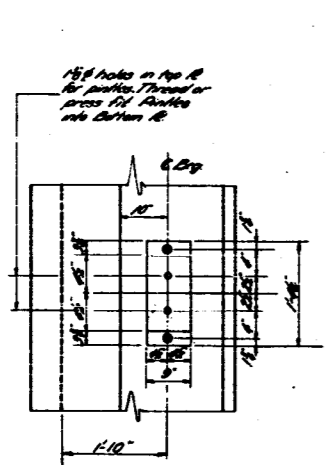
DIAPHRAGM DETAILS
ELGIN BY-PASS OVER ST. CHARLES ST.
E.A. RT. 6 - SEC. 2 & 10 - S.
KANE COUNTY
STA. 218+04.95



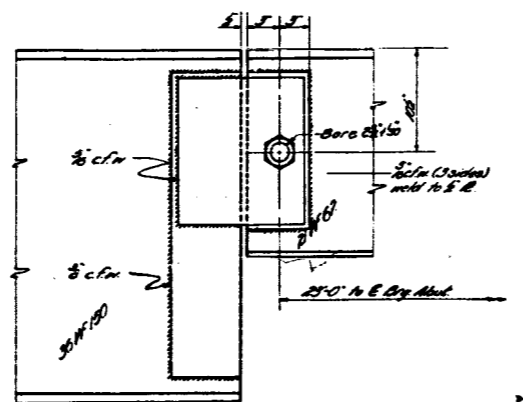
STATE OF ILLINOIS
DEPARTMENT OF PUBLIC WORKS & BUILDINGS
DIVISION OF HIGHWAYS

PROJECT NO.	SECTION	DATE	SHEET NO.
26	B.R.M.	KANE 22	16
DESIGNED BY	CHECKED BY	DRAWN BY	DATE

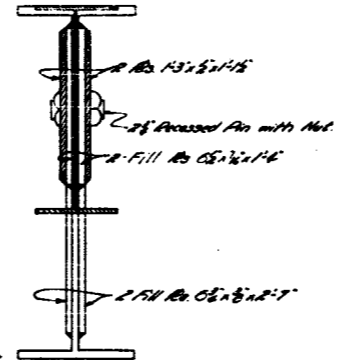
SHEET NO 5
11 SHEETS



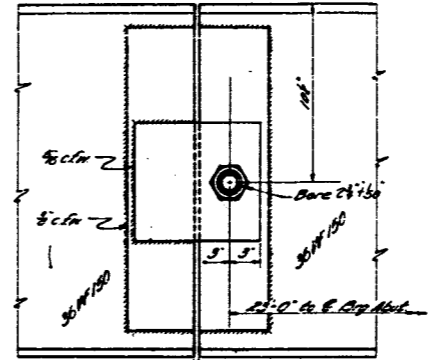
PLAN OF INTERIOR BEARING @ ABUTMENTS



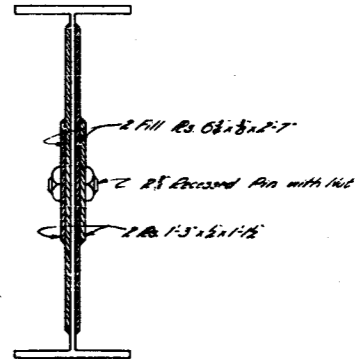
DETAIL OF HINGE INTERIOR BEAMS



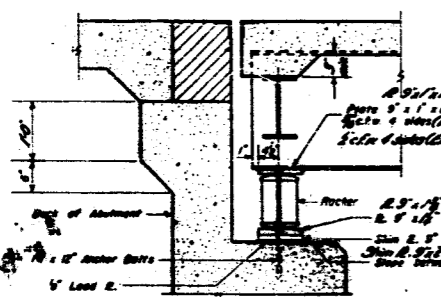
DETAIL OF PRESSED PIN



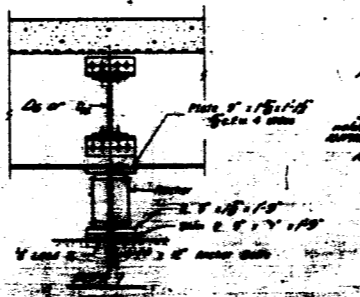
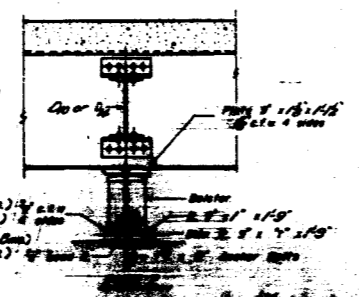
DETAIL OF HINGE EXTERIOR BEAM



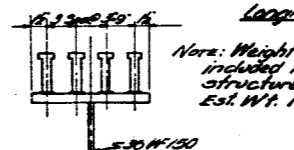
DETAIL OF HINGE EXTERIOR BEAM



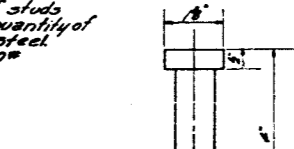
SECTION AT ABUTMENTS



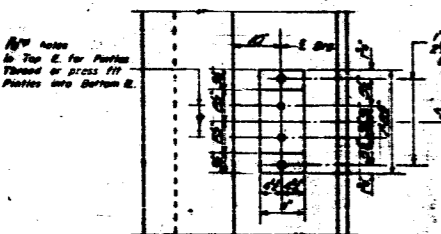
DETAIL OF BEARING INTERIOR BEAMS @ ABUTMENTS



Note: Weight of studs included in quantity of structural steel. Est. Wt. 1900#



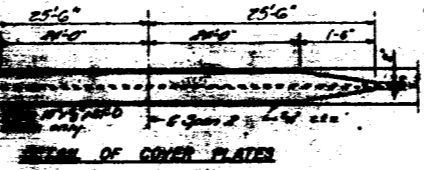
Note: Nelson Gamble Flux-Filled Studs or Equal, Automatically and welded.



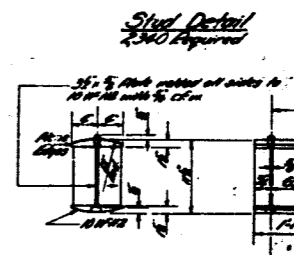
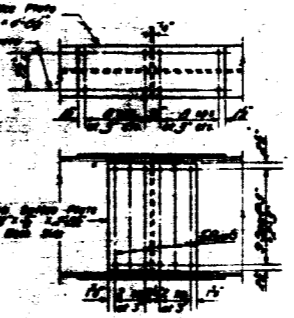
PLAN OF EXTERIOR BEAM @ ABUTMENTS

DETAIL OF PIVOT

DETAIL OF BEARING AT PIVOT



DETAIL OF BEARING AT PIVOT

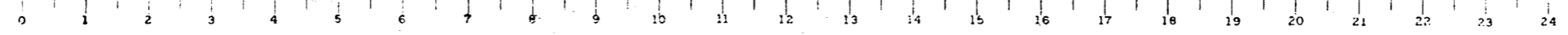


DETAIL OF BEARING EXTERIOR BEAMS @ ABUTMENTS

DESIGNED	H. A. Hoff
CHECKED	T. T. Trencher
DRAWN	W. A. Simpson
CHECKED	T. T. Trencher

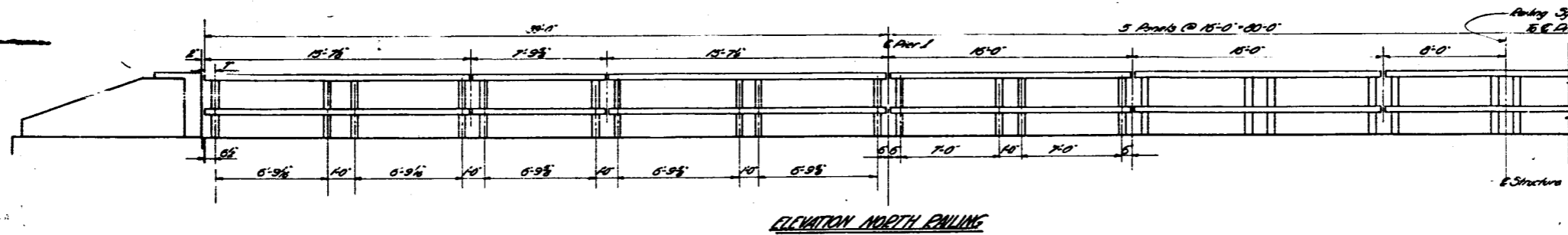
DATE	DEC. 31 1925
BY	W. A. Simpson
BY	W. A. Simpson
BY	W. A. Simpson

BEARING DETAILS
ELGIN BY-PASS OVER ST. CHARLES ST.
EA. R. 6 - Sec. 8P - NB-5
KANE COUNTY
Sta. 218+04.95

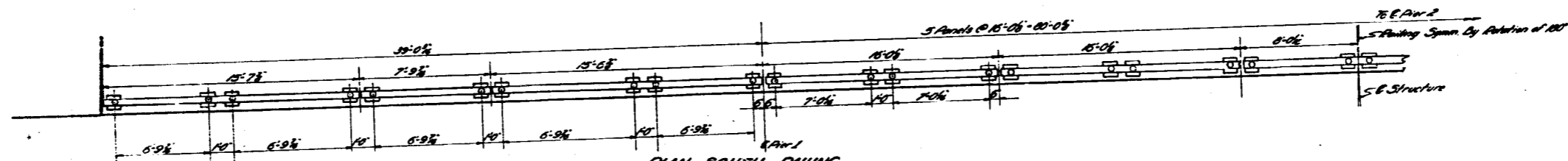


STATE OF ILLINOIS
DEPARTMENT OF PUBLIC WORKS & BUILDINGS
DIVISION OF HIGHWAYS

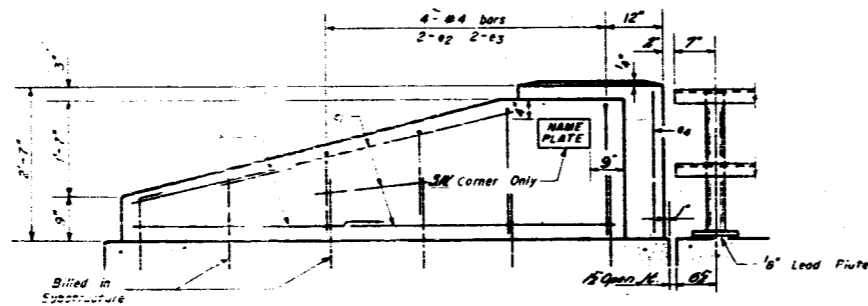
DATE	BY	NO.	REV.
6	B.R. KANE	22	17



ELEVATION NORTH RAILING

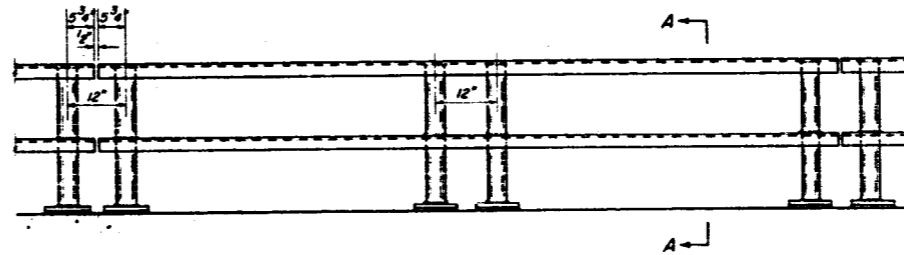


PLAN SOUTH RAILING

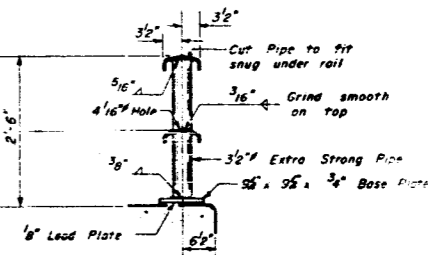


ELEVATION

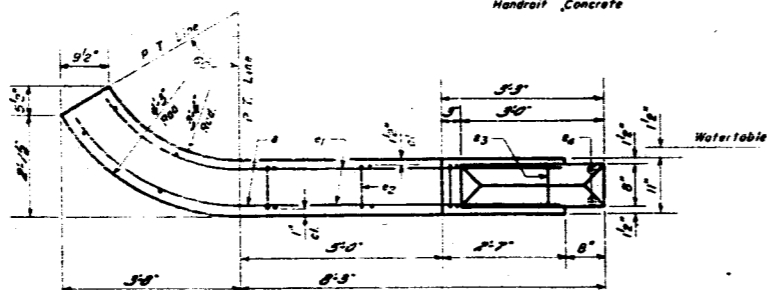
Note All End Post to be Handrail Concrete



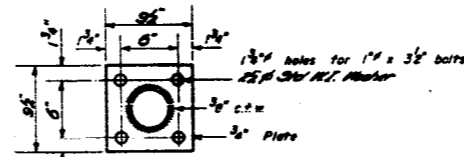
ELEVATION TYPICAL PANEL



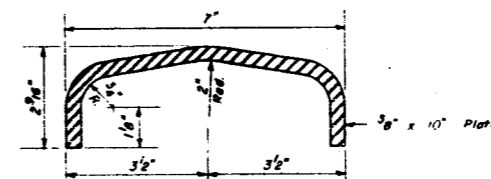
SECTION A-A



PLAN - END POST



BASE PLATE
ALL POSTS - SUPERSTRUCTURE



DETAIL OF RAIL

BILL OF MATERIAL

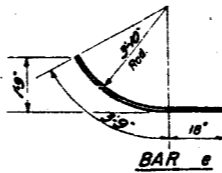
Handrail Concrete	Cu. Yd.	.29
Reinforcement Bars	Lbs.	240
Metal Handrail	Lbs. Ft.	310

DESIGNED	<i>H. A. Hoff</i>
CHECKED	<i>T. Tander</i>
DRAWN	<i>W. A. Schuman</i>
CHECKED	<i>T. Tander</i>

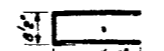
EXAMINED	<i>R. M. Romine</i>
PASSED	<i>C. J. Shindler</i>
APPROVED	<i>R. R. Bartholomew</i>

BILL OF REINFORCEMENT

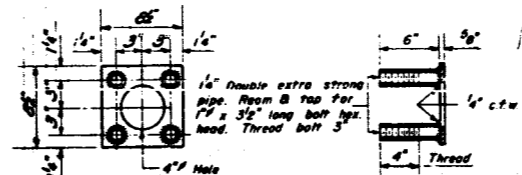
Bar	No.	Size	Length	Shape
e	16	#4	5'-3"	—
e1	24	#4	7'-8"	—
e2	8	#4	3'-4"	—
e3	8	#4	5'-0"	—
e4	8	#4	2'-3"	—



BAR e

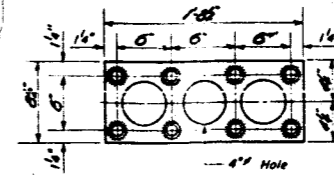


BAR e2 OF e3



ANCHOR DEVICE
At Single Post

Note: Provide 2-1/2" x 1-1/2" slip base plates for 30% of rail posts.

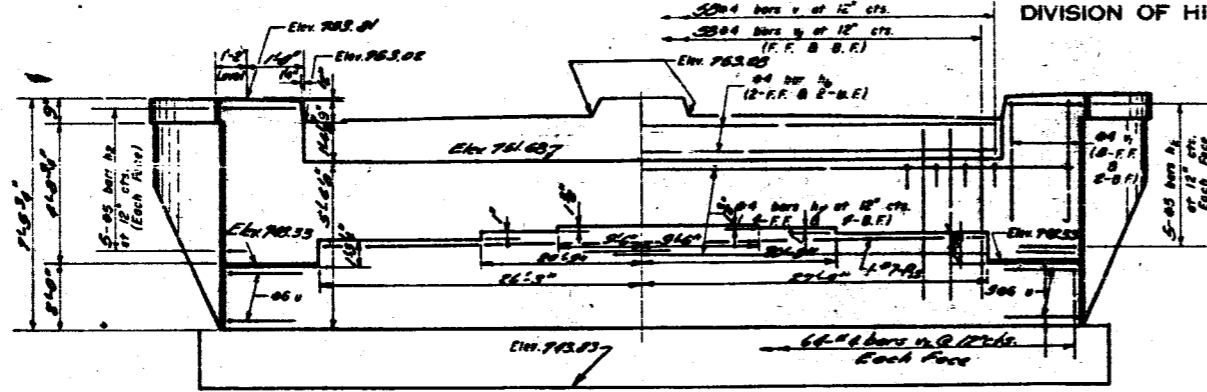


ANCHOR DEVICE
At Double Post

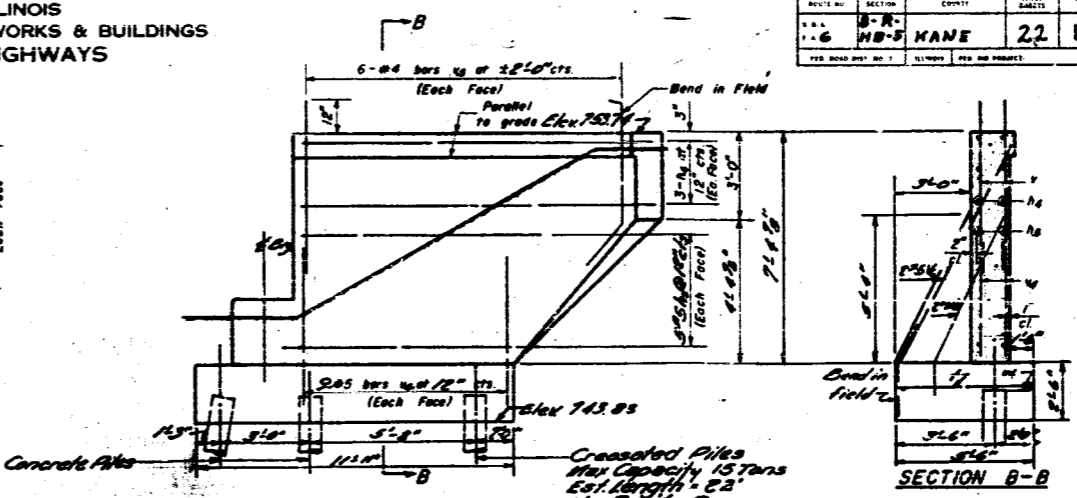
HANDRAIL DETAILS
ELGIN BY-PASS OVER ST. CHARLES ST.
I.A. Pt. 6 - SEC. 82-HB-5
KANE COUNTY
STA. 218+04.95

STATE OF ILLINOIS
DEPARTMENT OF PUBLIC WORKS & BUILDINGS
DIVISION OF HIGHWAYS

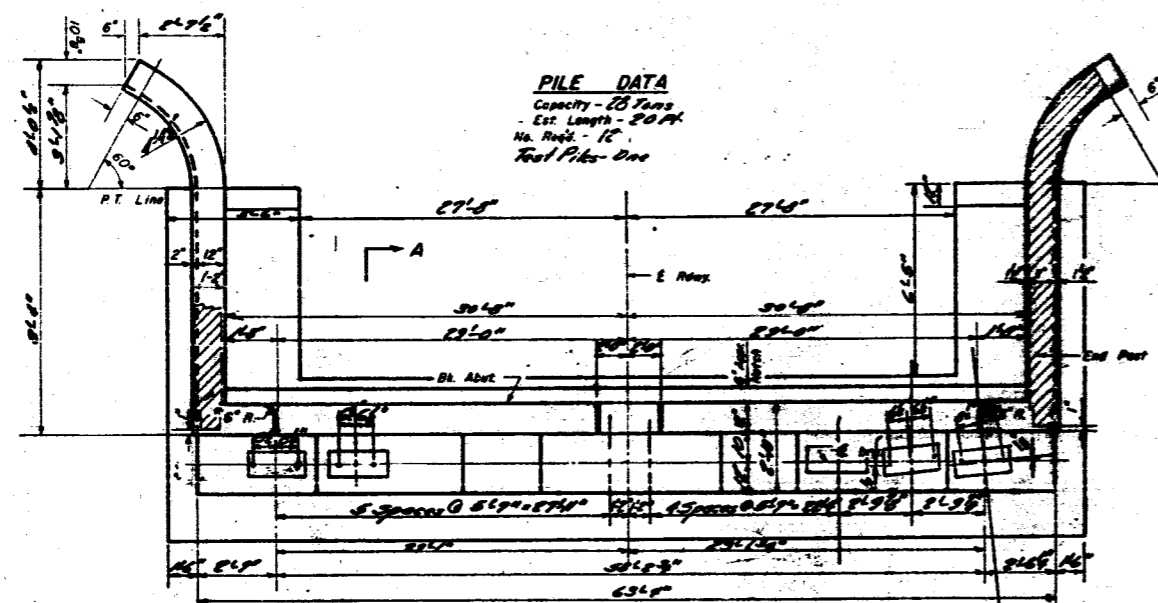
REVISED	SECTION	COUNT	DATE	SHEET
6	B-R	KANE	22 10	7
11-11-17				



ELEVATION
At Right Angles to E. Piers

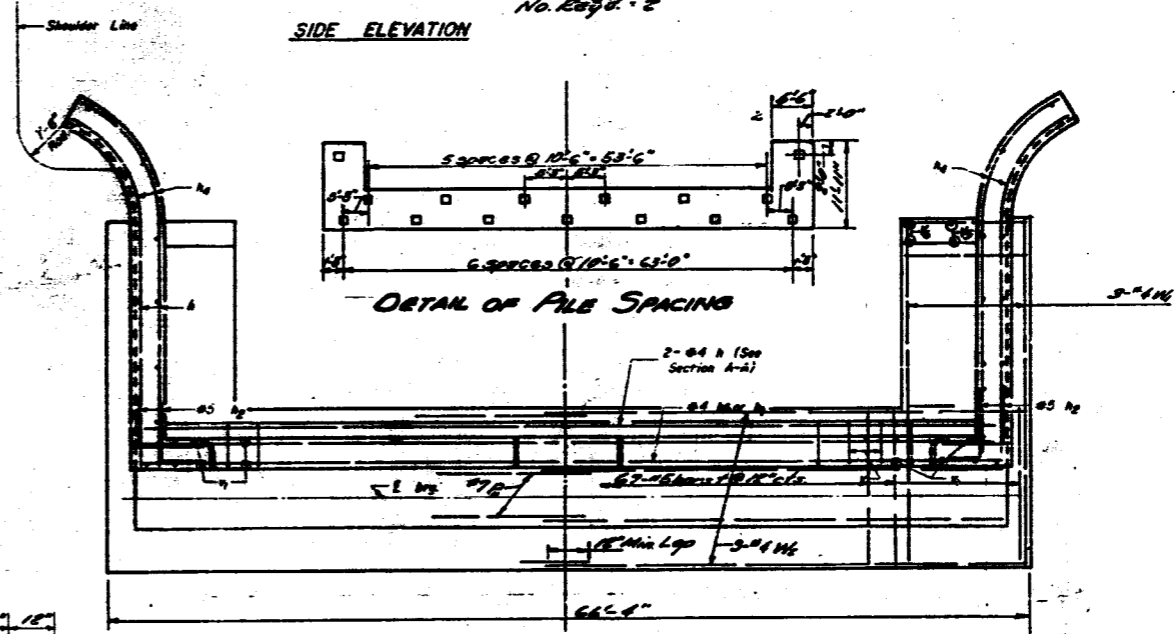


SIDE ELEVATION



PILE DATA
Capacity - 23 Tons
Est. Length - 20 Ft.
No. Piles - 12
Test Piles - One

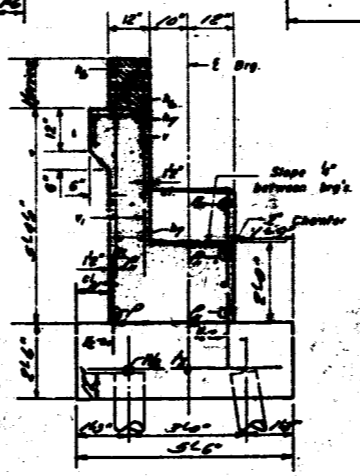
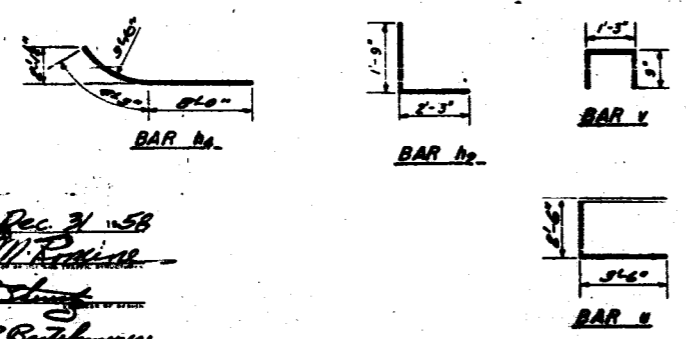
PLAN OF ABUTMENT
Dimensions



DETAIL OF PILE SPACING

PLAN OF ABUTMENT
Reinforcement

Note: Contractor shall construct curb without radius when curb & gutters are to be used on bridge approaches (See Road Plans).



SECTION A-A

BILL OF REINFORCEMENT

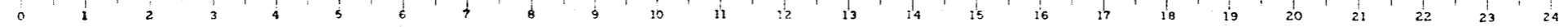
Bar	No.	Size	Length	Shape	Bar	No.	Size	Length	Shape
	20	#5	4'-0"	L	U	6	#6	9'-6"	□
	20	#5	9'-0"						
	12	#5	18'-3"						
	8	#4	29'-6"			58	#4	2'-3"	□
	20	#4	32'-6"			126	#4	5'-3"	
	12	#4	32'-6"			120	#4	4'-3"	
	5	#7	22'-0"			24	#4	6'-3"	
						36	#5	4'-6"	
	1	#8	6'-0"			6	#4	7'-0"	
	1	#5	3'-0"			6	#4	6'-3"	

BILL OF MATERIAL

Item	Spec.	Quantity
Class X Concrete	Co. No. 72.4	
Reinforcement Bars	Co. No. 3850	
Concrete Piles	Un. No. 240	
Concrete Test Piles	Co. No. 400	
Grouted Piles	Un. No. 4.2	

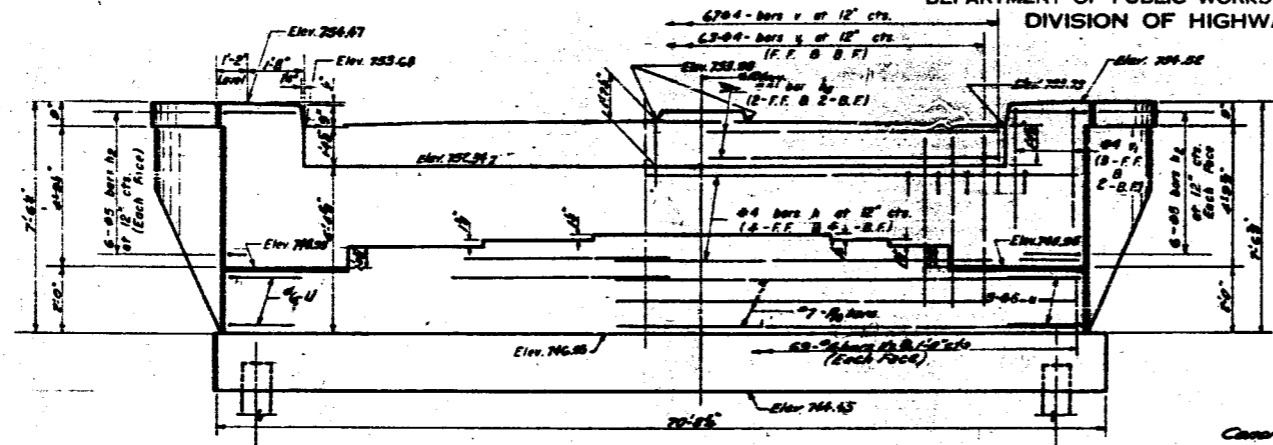
EAST ABUTMENT
ELGIN BYPASS OVER
ST. CHARLES ST.
F.A. R.C.G. SEC. BR. 118-5
KANE COUNTY
STA. 218+04.95

DESIGNED: *Wm. P. Smith*
CHECKED: *T. T. Tamm*
DRAWN: *W. A. Sisson*
EXAMINED: *Rec. 3/12/58*
PASSED: *W. J. R. R. R.*
APPROVED: *W. J. R. R. R.*

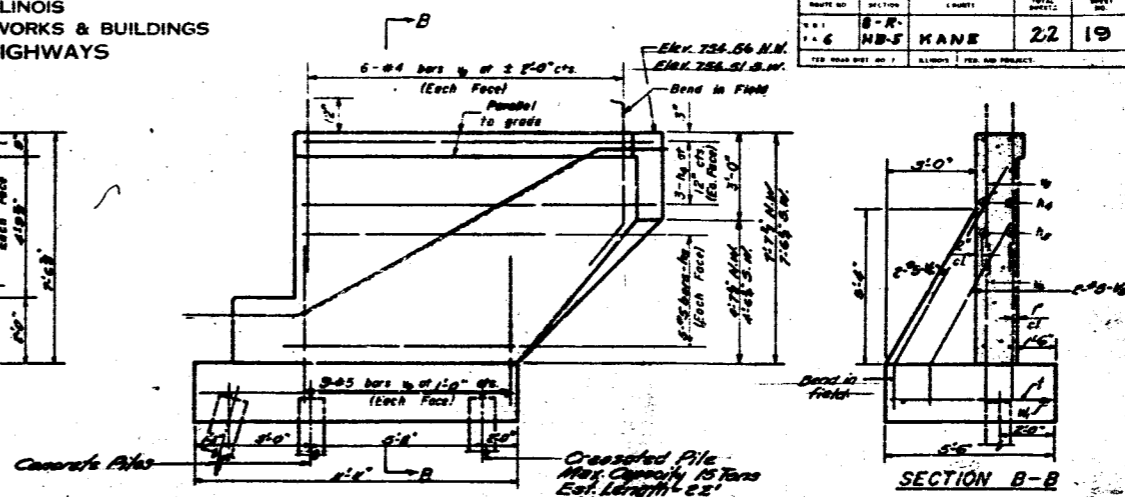


STATE OF ILLINOIS
DEPARTMENT OF PUBLIC WORKS & BUILDINGS
DIVISION OF HIGHWAYS

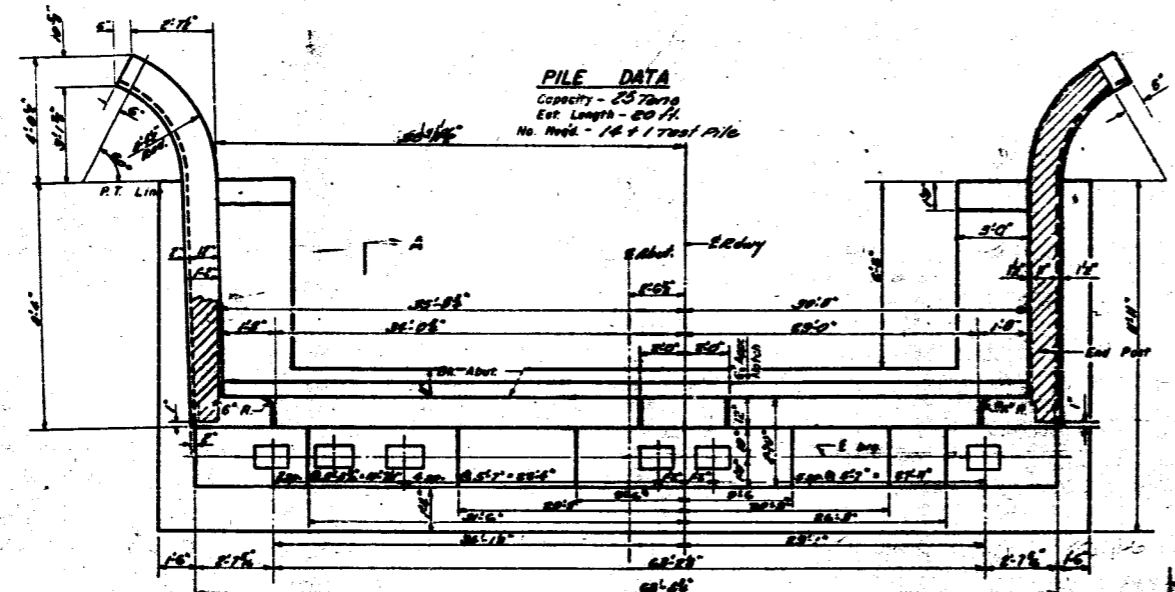
PROJECT NO.	SECTION	DATE	SCALE	SHEET NO.	TOTAL SHEETS
11-6	B-R	KANE	22	19	11 SHEETS



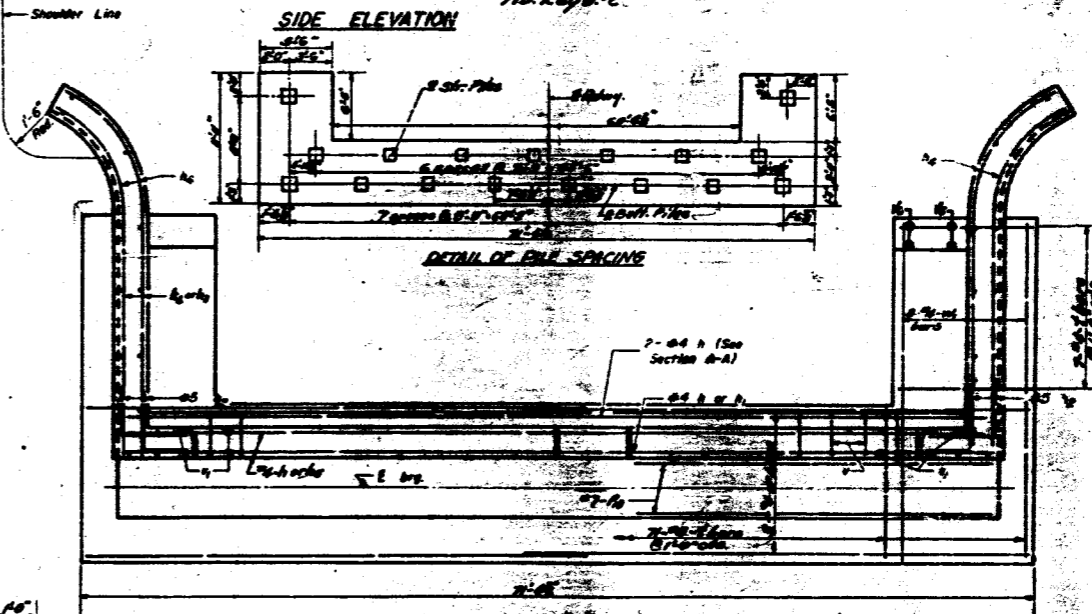
ELEVATION
At Right Angles to E Row



SECTION B-B

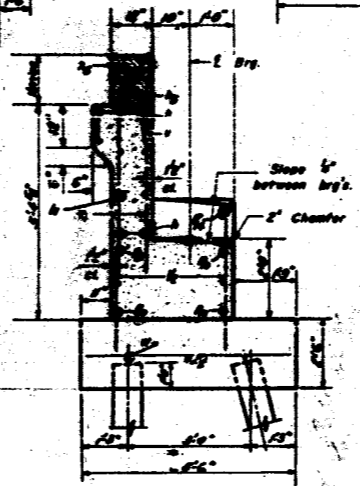
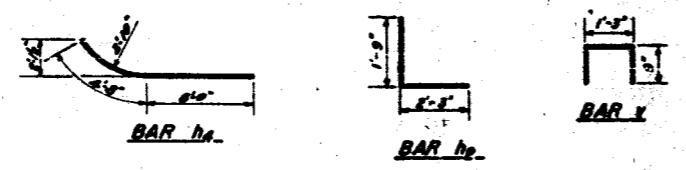


PLAN OF ABUTMENT
Dimensions



PLAN OF ABUTMENT
Reinforcement

Note: Contractor shall construct curb without radius when a curb & gutter are to be used on bridge approaches (See Road Plans).



SECTION A-A

BILL OF REINFORCEMENT

Bar	No.	Size	Length	Shape	Bar	No.	Size	Length	Shape
1	20	#4	20'-0"	—	11	8	#4	20'-0"	—
2	24	#4	4'-0"	—	12	6	#4	7'-0"	—
3	20	#4	20'-0"	—	13	8	#4	20'-0"	—
4	12	#4	12'-0"	—	14	8	#4	20'-0"	—
5	8	#4	20'-0"	—	15	8	#4	20'-0"	—
6	12	#4	12'-0"	—	16	8	#4	20'-0"	—
7	8	#4	20'-0"	—	17	8	#4	20'-0"	—
8	8	#4	20'-0"	—	18	8	#4	20'-0"	—
9	8	#4	20'-0"	—	19	8	#4	20'-0"	—
10	8	#4	20'-0"	—	20	8	#4	20'-0"	—

BILL OF MATERIAL

Item	Quantity
Class X Concrete	76.3
Reinforcement Bars	4080
Crossed File	200
Concrete Piles	12

DESIGNED: *H. P. Smith*
CHECKED: *T. T. Trench*
DRAWN: *W. A. Sorenson*
CHECKED: *T. T. Trench*

EXAMINED: *J. M. Kinnel*
PASSED: *E. J. Smith*
APPROVED: *R. R. Bodinger*

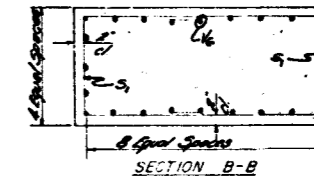
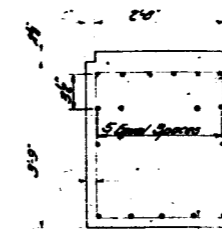
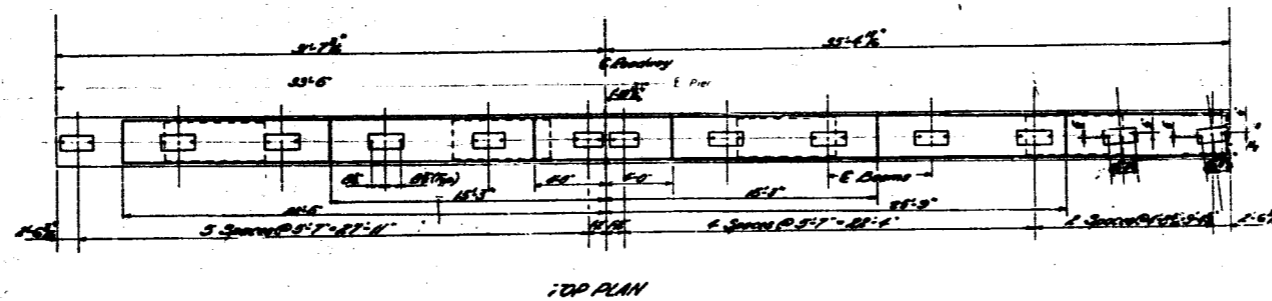
Dec 31 1958

A-3 Draw 5-21-58

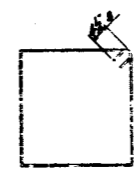
REVISIONS
NO. 1
DATE 12-15-58
BY *W. A. Sorenson*
REASON: *Change in pile spacing*

STATE OF ILLINOIS
DEPARTMENT OF PUBLIC WORKS & BUILDINGS
DIVISION OF HIGHWAYS

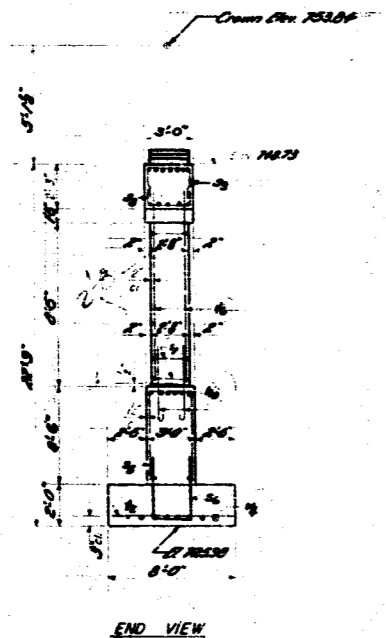
PROJECT NO.	DISTRICT	COUNTY	SHEET NO.	SHEET TOTAL
6	B-N	KANE	22	20
SHEET 9				



SECTION A-A

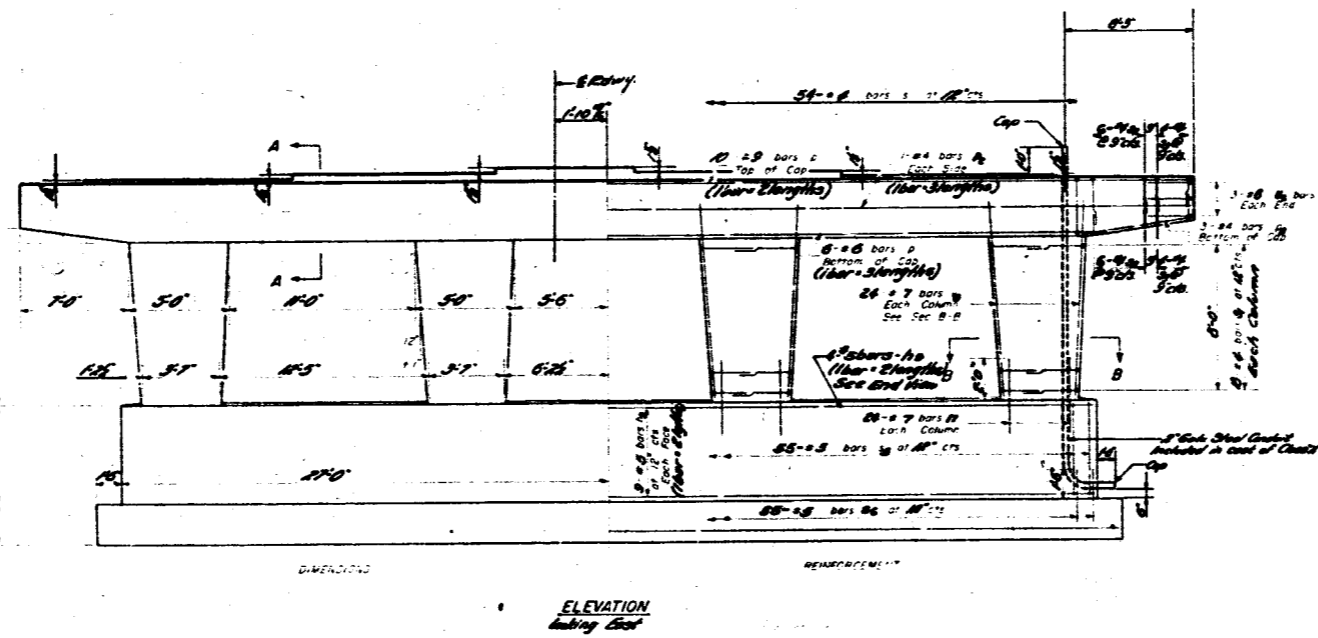


SECTION B-B

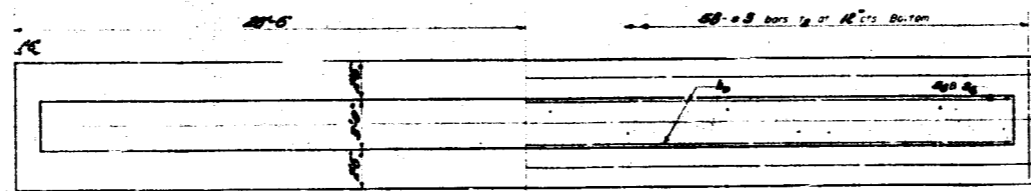


END VIEW

Note: All edges shall have standard 1/4" chamfer except footing.



ELEVATION
Looking East



FOOTING PLAN

A & B DIMENSIONS

Bar	A	B
1	2'-4"	3'-0"
2	2'-8"	2'-1"
3	2'-8"	1'-8"
4	2'-8"	1'-8"
5	2'-8"	1'-3"

PIER
BILL OF MATERIAL

Bar	No.	Size	Length	Qty
1	44	#8	8'-0"	44
2	96	#8	4'-0"	96
3	20	#8	8'-0"	20
4	18	#8	8'-0"	18
5	6	#8	8'-0"	6
6	4	#8	7'-5"	4
7	54	#8	10'-0"	54
8	24	#8	8'-0"	24
9	24	#8	6'-0"	24
10	16	#8	6'-0"	16
11	25	#8	10'-0"	25
12	25	#8	7'-5"	25
13	58	#8	7'-5"	58
14	6	#8	10'-0"	6
15	96	#8	10'-0"	96
16	4	#8	8'-0"	4

Class X Concrete 126.8
Reinforcement Bars 134 10,520
Class X Concrete 126.8 126.8

DESIGNED: *H. A. Smith*
CHECKED: *T. Tomlin*
DRAWN: *H. A. Smith*
CHECKED: *T. Tomlin*

EXAMINED: *W. M. Rogers*
PASSED: *E. J. Smith*
APPROVED: *R. C. Thompson*

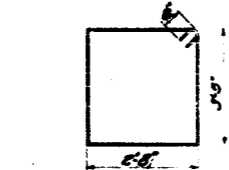
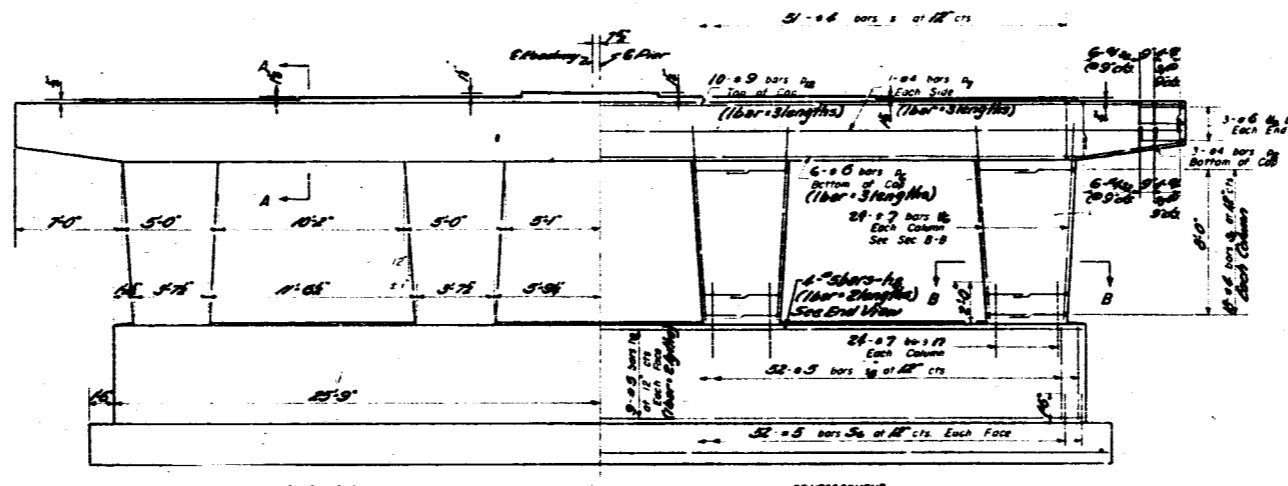
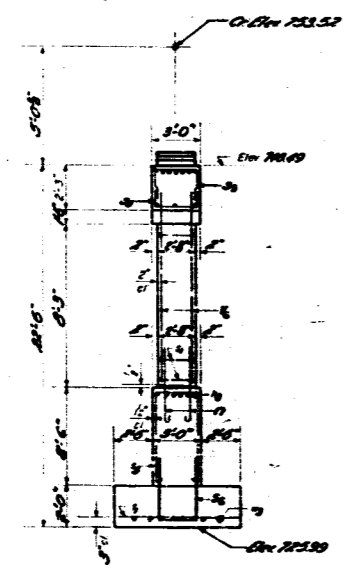
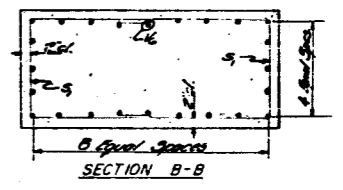
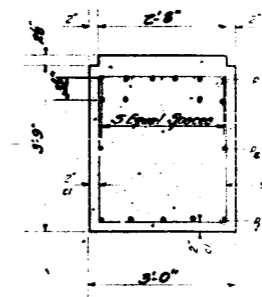
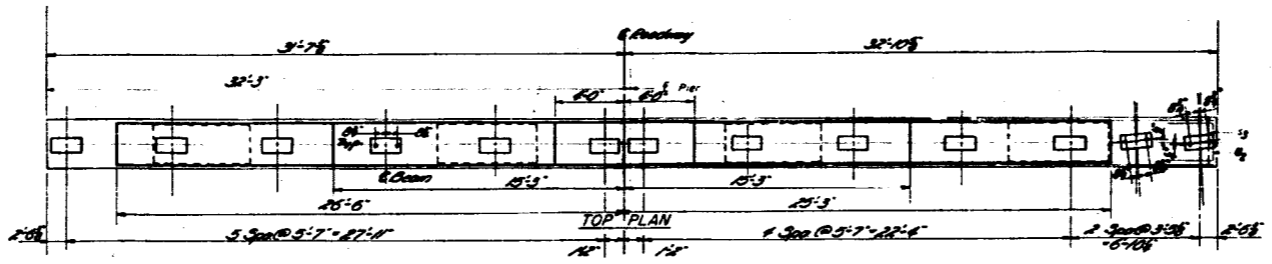
Dec 31 1959

PIER 1
FROM EX-105 OVER ST. CHARLES ST.
EX-105 - SEC. 02-103-5
KANE COUNTY
JUL 20 1955

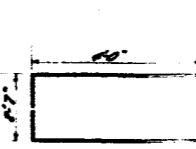
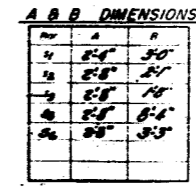
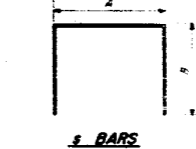
STATE OF ILLINOIS
DEPARTMENT OF PUBLIC WORKS & BUILDINGS
DIVISION OF HIGHWAYS

ROUTE NO.	DISTRICT	COUNTY	SHEET NO.	TOTAL SHEETS
6	11	WANE	22	21

SHEET NO. 10
// SHEETS



5-5/8" dia. BARS



3 BARS

PIER 2
BILL OF MATERIAL

Bar No.	Size	Length	Qty.
10	44	43	263
17	96	97	1-0
18	20	59	33-6
19	18	46	12-9
2	6	44	22-5
3	6	44	7-8
4	51	4	12-0
5	22	4	8-4
6	24	4	6-0
7	10	46	6-0
8	32	45	13-4
9	52	25	9-8
11	55	15	2-9
12	6	40	10-7
13	96	97	10-6
14	16	4	27-9

Class X Concrete Cr. No. 1215
Reinforcement Bars L.M. 12,222
Class I Expansion G.M. 221

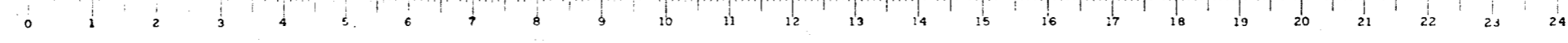
DESIGNED: *W.A. Swannick*
CHECKED: *T. Tander*
DRAWN: *W.A. Swannick*
CHECKED: *T. Tander*

EXAMINED: *RR Bishopp*
PASSED: *RR Bishopp*
APPROVED: *RR Bishopp*

Dec 31 1958

P-5 DRAWN C-4-57

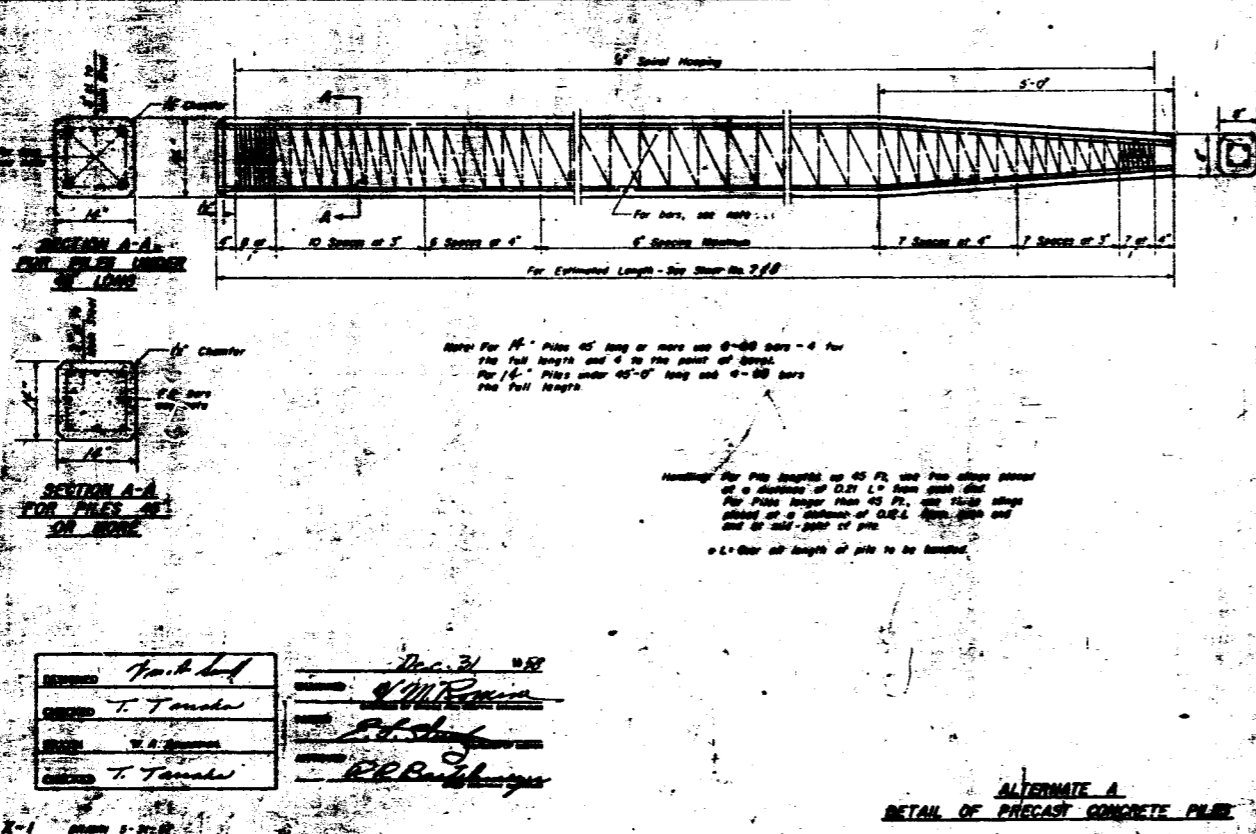
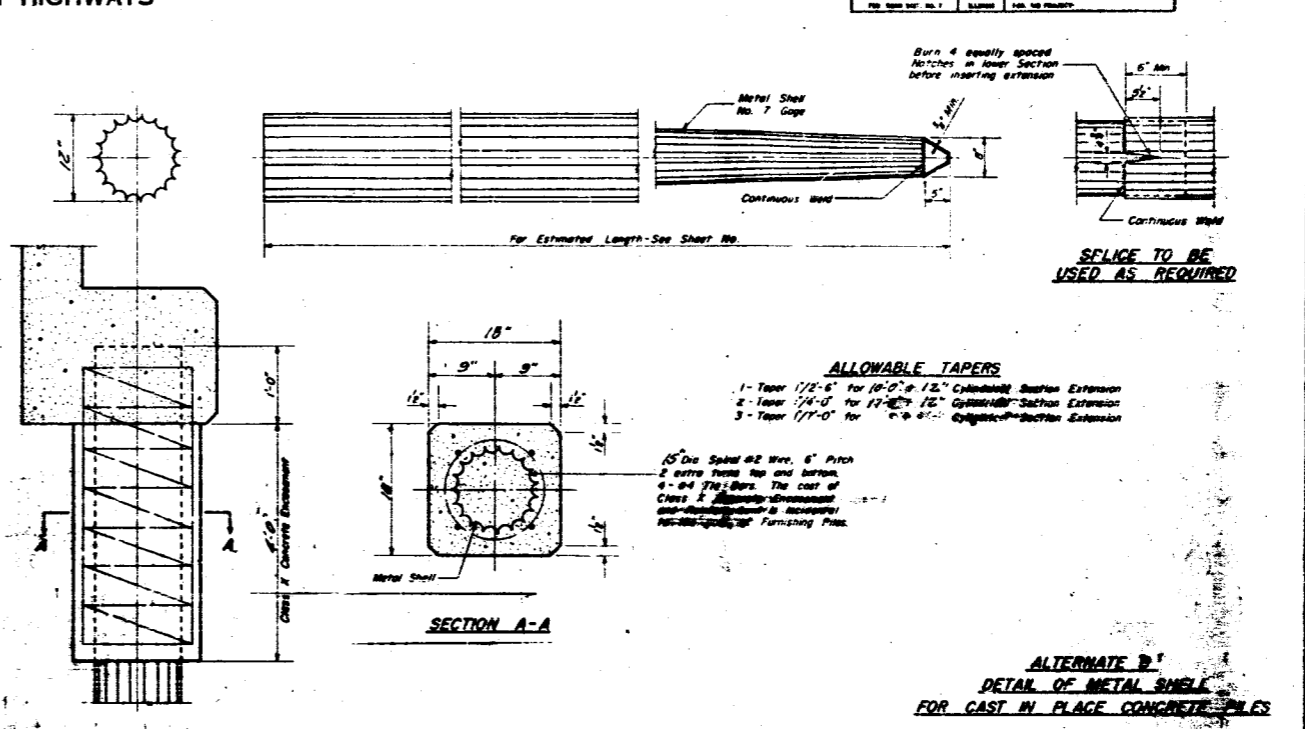
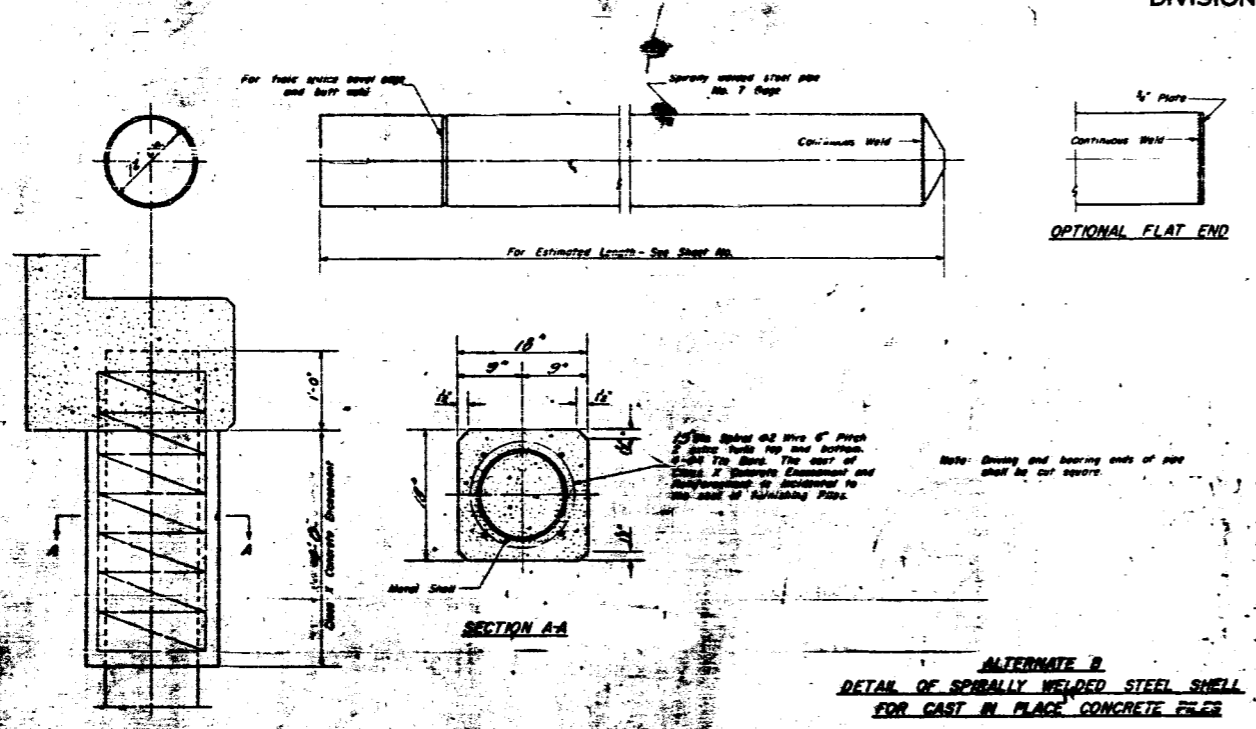
PIER 2
EIGN BY-PIES OVER STICHARDS ST.
R.A.P. 5 - Sec. 31-115-5
DAVE COUNTY
STA. 215+04.95



STATE OF ILLINOIS
DEPARTMENT OF PUBLIC WORKS & BUILDINGS
DIVISION OF HIGHWAYS

DATE	BY	CHECKED	SCALE	SHEET NO.
11-6	H.B.S.	KANE	2.2	2.2

SHEET NO. 11
// SHEETS



Prepared by: T. Tomala

Checked by: T. Tomala

Approved by: [Signature]

Date: [Date]

PILE DETAIL
ELGIN BY-PASS OVER ST. [unclear] ST.
P.A.E.C. SEC. 8E
KANE COUNTY
STA. 218+04.93

