

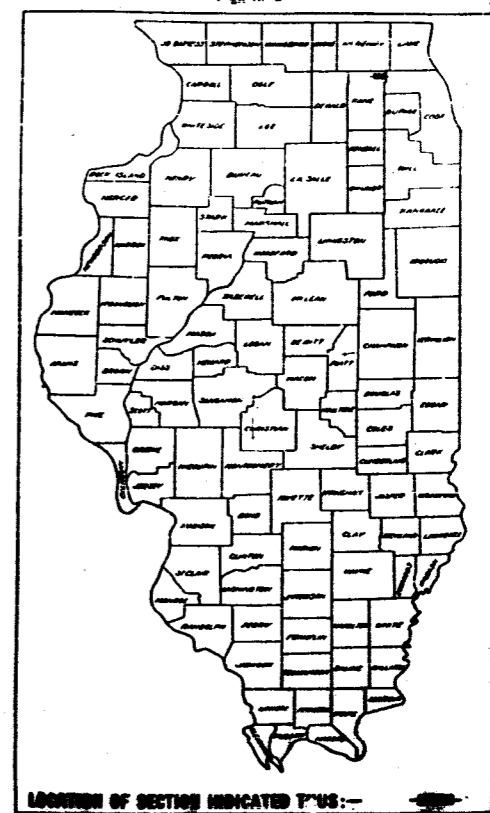
# 045-0007

STATE OF ILLINOIS  
DEPARTMENT OF PUBLIC WORKS AND BUILDINGS  
DIVISION OF HIGHWAYS  
PLANS FOR PROPOSED  
FEDERAL AID HIGHWAY

SCALES: PLAN 1 INCH = 80 FT.  
PROFILE, HOR. 1 INCH = 20 FT.  
PROFILE, VERT. 1 INCH = 10 FT.  
CROSS-SECTIONS 1 INCH = 5 FT.

F.A. ROUTE 6  
SECTIONS 8R-B-1 8R-HB-3 8R-HB-5 8R-HB-6  
8R-HB-4 8R-HF-5 8R-HF-6  
COOK-KANE COUNTIES  
PROJECT U-613(3)

FEDERAL AID ROUTE NO.	SEC.	COUNTY	TOTAL SHEETS	SHEET NO.
6	8R-B-1	KANE		
	8R-HB-3			
	8R-HB-4			
	8R-HB-5			
	8R-HB-6			
	8R-HF-5			
	8R-HF-6			



LOCATION OF SECTION INDICATED P'US:-  
SPECIAL COVER SHEET PREPARED FOR FEDERAL PROJECT

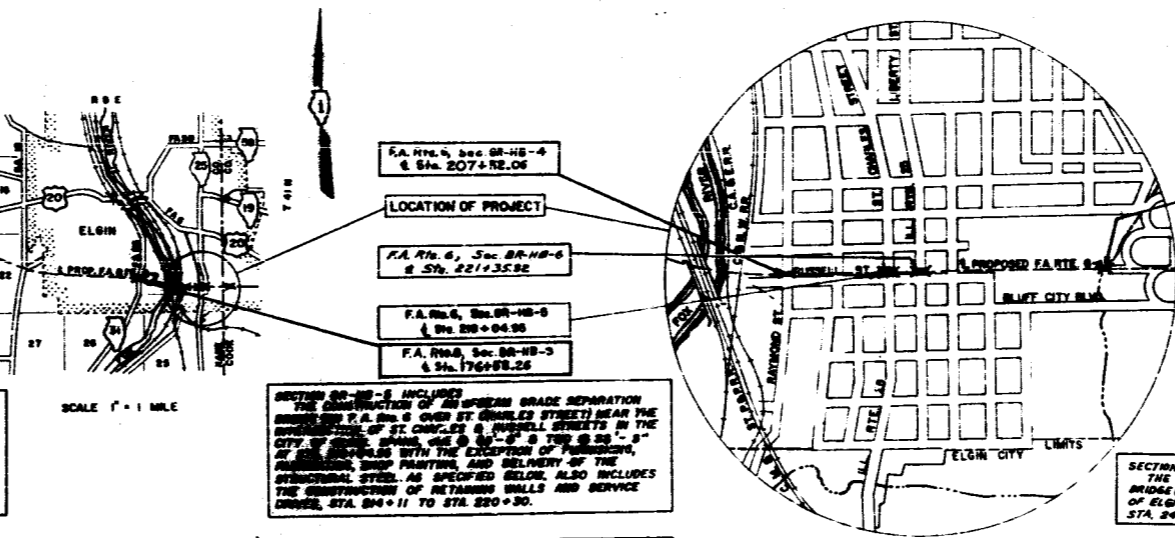
**SECTION 8R-HB-3 INCLUDES:**  
THE CONSTRUCTION OF AN I-BEAM GRADE SEPARATION STRUCTURE (ON ILL. Rte. 6 OVER STATE STREET - OVER F.A. Rte. 6) NEAR THE INTERSECTION OF S. STATE STREET, SOUSTER AVENUE IN THE CITY OF ELGIN. ONE SPAN A 67'-2" (BETWEEN ABUTMENTS 71'-10 1/2") AND THE FURNISHING, FABRICATING, SHIP PAINTING, AND DELIVERY OF THE STRUCTURAL STEEL. ALSO INCLUDES THE RECONSTRUCTION OF S. STATE STREET, ELGIN STATE HOSPITAL ENTRANCE AND SERVICE DRIVE, STORM SEWERS, AND OTHER APPURTENANCES.

**SECTION 8R-HB-4 INCLUDES:**  
THE CONSTRUCTION OF AN I-BEAM GRADE SEPARATION STRUCTURE (ON F.A. Rte. 6 OVER RAYMOND STREET) NEAR THE INTERSECTION OF RAYMOND & RUSSELL STREETS IN THE CITY OF ELGIN. SPANS ONE 48'-0" & TWO @ 42'-9" AT STA. 207+24.06. ALSO INCLUDES THE RECONSTRUCTION OF RAYMOND & DWIGHT STREETS INVOLVING RETAINING WALLS, STORM SEWERS, AND OTHER APPURTENANCES.

**SECTION 8R-HB-5 INCLUDES:**  
THE CONSTRUCTION OF AN I-BEAM GRADE SEPARATION BRIDGE (ON F.A. Rte. 6 OVER LIBERTY STREET (ILL. Rte. 25) NEAR THE INTERSECTION OF LIBERTY AND RUSSELL STREETS IN THE CITY OF ELGIN. SPANS ONE AT 69'-0" AND TWO AT 37'-6" AT STA. 221+35.32 WITH THE EXCEPTION OF FURNISHING, FABRICATING, SHIP PAINTING, AND DELIVERY OF THE STRUCTURAL STEEL AS SPECIFIED BELOW.

**SECTION 8R-HF-6 INCLUDES:**  
FURNISHING, FABRICATING, SHIP PAINTING AND DELIVERY OF THE STRUCTURAL STEEL AS SPECIFIED IN THE NOTE FOR AN I-BEAM GRADE SEPARATION STRUCTURE (ON F.A. Rte. 6 OVER LIBERTY STREET (ILL. Rte. 25) NEAR THE INTERSECTION OF LIBERTY AND RUSSELL STREETS IN THE CITY OF ELGIN. SPANS ONE AT 69'-0" AND TWO AT 37'-6" AT STA. 221+35.32.

**NOTE:**  
STRUCTURAL STEEL SHALL BE DELIVERED FOR NATIONAL STREET IN THE CITY OF ELGIN BY THE CHICAGO AND MILWAUKEE, ST. PAUL AND PACIFIC R.R., EXCEPT THAT DELIVERY MAY BE MADE F.O.B. BRIDGE SITE BY TRUCK IF SUITABLE ARRANGEMENTS ARE MADE WITH THE CONTRACTOR FOR SECTION 8R-HB-6.



- F.A. Rte. 6, Sec. 8R-HB-4 & Sta. 207+24.06
- LOCATION OF PROJECT
- F.A. Rte. 6, Sec. 8R-HB-6 & Sta. 221+35.32
- F.A. Rte. 6, Sec. 8R-HB-5 & Sta. 221+35.32
- F.A. Rte. 6, Sec. 8R-HB-3 & Sta. 221+35.32

**SECTION 8R-HB-6 INCLUDES:**  
THE CONSTRUCTION OF AN I-BEAM GRADE SEPARATION BRIDGE (ON F.A. Rte. 6 OVER ST. CHARLES & RUSSELL STREETS IN THE CITY OF ELGIN. SPANS ONE @ 69'-0" & TWO @ 37'-6" AT STA. 221+35.32 WITH THE EXCEPTION OF FURNISHING, FABRICATING, SHIP PAINTING, AND DELIVERY OF THE STRUCTURAL STEEL AS SPECIFIED BELOW. ALSO INCLUDES THE CONSTRUCTION OF RETAINING WALLS AND SERVICE DRIVE, STA. 220+11 TO STA. 220+30.

**SECTION 8R-HF-5 INCLUDES:**  
THE FURNISHING, FABRICATING, SHIP PAINTING, AND DELIVERY OF THE STRUCTURAL STEEL AS SPECIFIED IN THE NOTE FOR AN I-BEAM GRADE SEPARATION STRUCTURE (ON F.A. Rte. 6 OVER LIBERTY STREET (ILL. Rte. 25) NEAR THE INTERSECTION OF LIBERTY AND RUSSELL STREETS IN THE CITY OF ELGIN. SPANS ONE @ 69'-0" & TWO @ 37'-6" AT STA. 221+35.32.

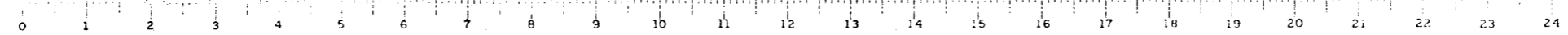
**NOTE:**  
STRUCTURAL STEEL SHALL BE DELIVERED F.O.B. NATIONAL STREET IN THE CITY OF ELGIN BY THE CHICAGO AND MILWAUKEE, ST. PAUL AND PACIFIC R.R., EXCEPT THAT DELIVERY MAY BE MADE F.O.B. BRIDGE SITE BY TRUCK IF SUITABLE ARRANGEMENTS ARE MADE WITH THE CONTRACTOR FOR SECTION 8R-HB-6.

NET LENGTH OF SECTION 8R-B-1 = 119.00 FT. = .222 MI.  
NET LENGTH OF SECTION 8R-HB-3 = 1008.5 FT. = .121 MI.  
NET LENGTH OF SECTION 8R-HB-4 = 1159 FT. = .026 MI.  
NET LENGTH OF SECTION 8R-HB-5 = 146.77 FT. = .030 MI.  
NET LENGTH OF SECTION 8R-HB-6 = 147.5 FT. = .032 MI.

STATE OF ILLINOIS  
DEPARTMENT OF PUBLIC WORKS AND BUILDINGS  
BUREAU OF HIGHWAYS  
December 10, 1932  
*D. J. Maguire*  
March 10, 1933  
*A. V. Van Arsdale*  
March 10, 1933  
*Blanchard*  
March 10, 1933  
*A. J. Buehler*  
March 10, 1933  
*Blanchard*

DEPARTMENT OF COMMERCE  
BUREAU OF PUBLIC ROADS  
APPROVED: \_\_\_\_\_ DATE: \_\_\_\_\_

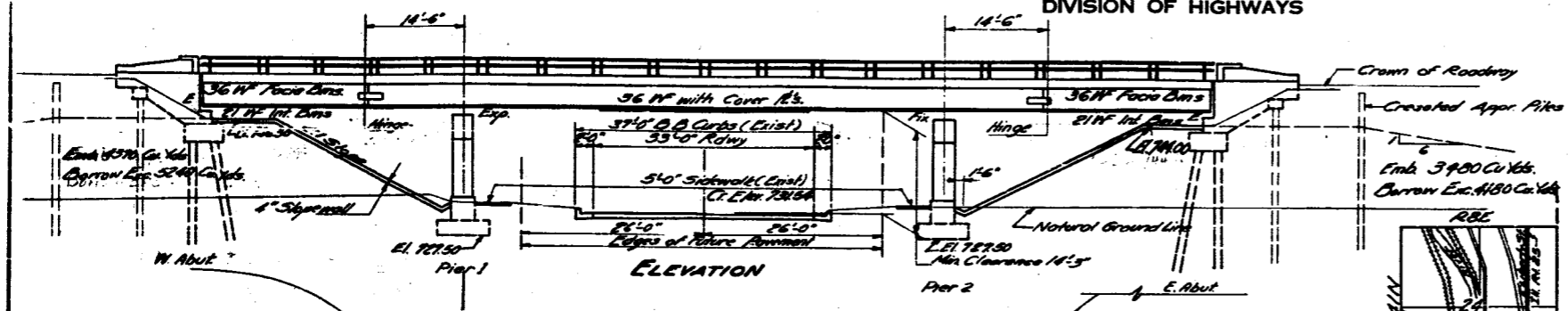
KANE COUNTY SECTIONS 8R-B-1 8R-HB-3 8R-HB-4 8R-HB-5 8R-HB-6 8R-HF-5 8R-HF-6 F.A. ROUTE 6



C. M. 25 - E. Mt. of fire hydrant - NE corner of Liberty  
 & Russell Sts - Elev 728.75  
 No existing structure

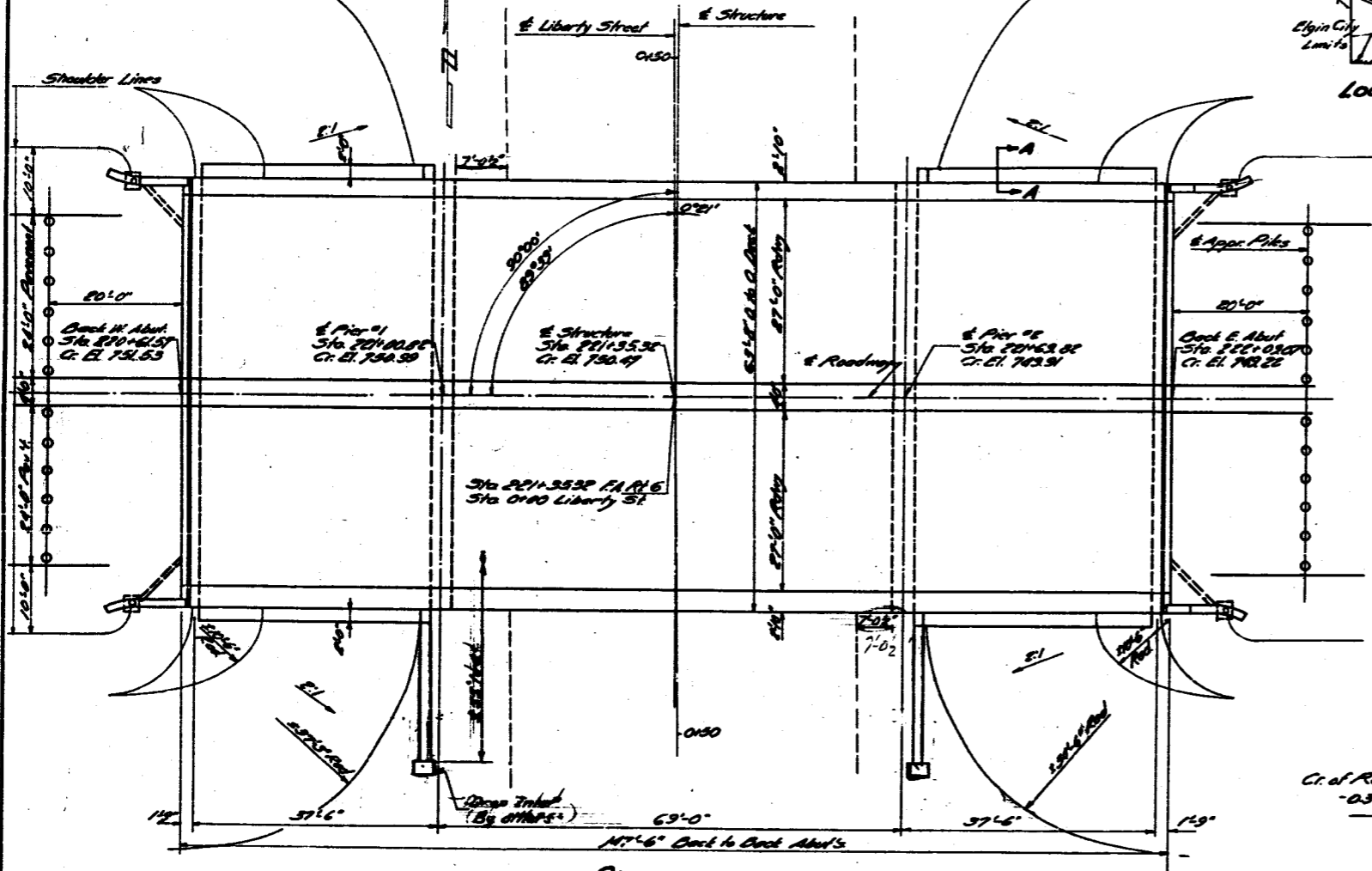
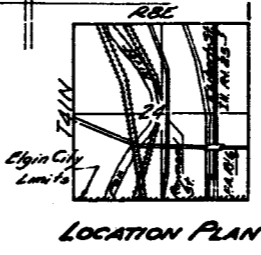
STATE OF ILLINOIS  
 DEPARTMENT OF PUBLIC WORKS & BUILDINGS  
 DIVISION OF HIGHWAYS

PROJECT NO.	SECTION	SUBJECT	DATE	SHEET	SHEET NO. /
P.A. 6	SEC. 8B-HB-6	KANE	12	4	8 SHEETS
DESIGNED BY	DRAWN BY	CHECKED BY	APPROVED BY	DATE	



**GENERAL NOTES**

Class X Concrete shall be used throughout.  
 The concrete floor slab shall be finished in accordance with Art. 51.13 of the Standard Specifications.  
 Slope wall shall be reinforced with welded wire fabric 6" x 6" mesh, weighing 58 lbs per 100 sq ft.  
 Rivets 1/2", open holes 1/8" unless noted.  
 Field connections riveted unless noted.  
 All safety railing, bearing plates, lead plates, pinholes and anchor bolts shall be fabricated and set in accordance with Art. 51.13 of the Standard Specifications and are included in quantity of structural steel (Est. No. 12,200 0.75%).  
 Anchor bolts shall be set before riveting diaphragms over supports.  
 All steel handrail posts shall be vertical.  
 Expansion guards shall be fabricated and erected in accordance with Art. 51.13(d) of the Standard Specifications.  
 Expansion guards are included in quantity of Structural Steel (Est. No. 30 0.12%).  
 Except as otherwise provided all Structural Steel shall receive one shop coat of red lead paint and two field coats of Aluminum Paint. See Art. 5.56.1 to 56.5 inclusive of the Standard Specifications.  
 All paint shall be furnished and applied by the contractor.  
 The contractor shall drive one concrete test pile in permanent location of each Abutment before casting remainder of piles.  
 All cover plates and beams to which cover plates are welded shall conform to the Specification for Structural Steel for building ASTM Designation A373.  
 Notes for Concrete Piles in Abutments shall be prepared in accordance with Art. 60.9 (c) of the Standard Specifications.

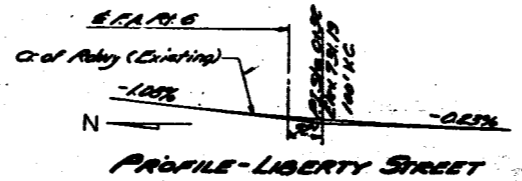


**PILE DATA**

Type - Crossed Timber  
 Capacity - 18 Tons  
 Cdn Length - 60 ft  
 No. Required - 4

**TOTAL BILL OF MATERIAL SEC. 8B-HB-6**

Item	Super	Sub	Total	
Class X Concrete	Cu Yds	288.5	2347	672.2
Reinforcement Bars	Lbs	32,110	25,400	60,520
Metal Handrail	Lin. Ft.	231		231
Name Plates	Each	1		1
Structural Steel	Lbs	276,200		276,200
Handrail Concrete	Cu Yds	2.2		2.2
Concrete Piles	Lin. Ft.		400	400
Test Pile Concrete	Each		2	2
Crossed Piles	Lin. Ft.		360	360
Class A Excavation for Structures	Cu Yds		162	162
Slope Mat	Sq. Yds			6.97
Borrow Excavation	Cu Yds			2460



**DESIGN STRESSES**

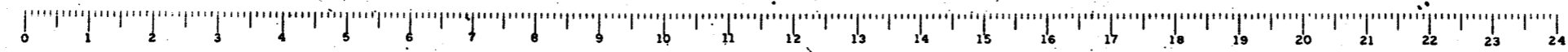
R = 1400 psi Super  
 W = 18 psi. For Footings  
 F<sub>c</sub> = 20,000 psi. Reinf.  
 F<sub>s</sub> = 18,000 psi. Struct.  
 A = 10

**LOADING H20-516-44**

**GENERAL PLAN & ELEVATION**  
 ELGIN BYPASS OVER LIBERTY ST.  
 PROJ. U613(3)  
 P.A. Rte. 6 SEC. 8B-HB-6  
 KANE COUNTY  
 STA. 221+3532

DESIGNED: *James P. ...*  
 CHECKED: *...*  
 DRAWN: *...*  
 APPROVED: *R.P. ...*

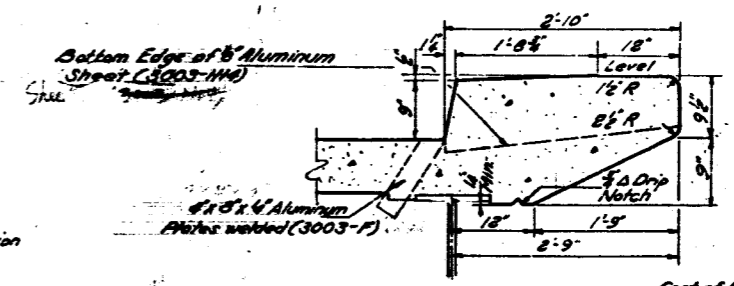
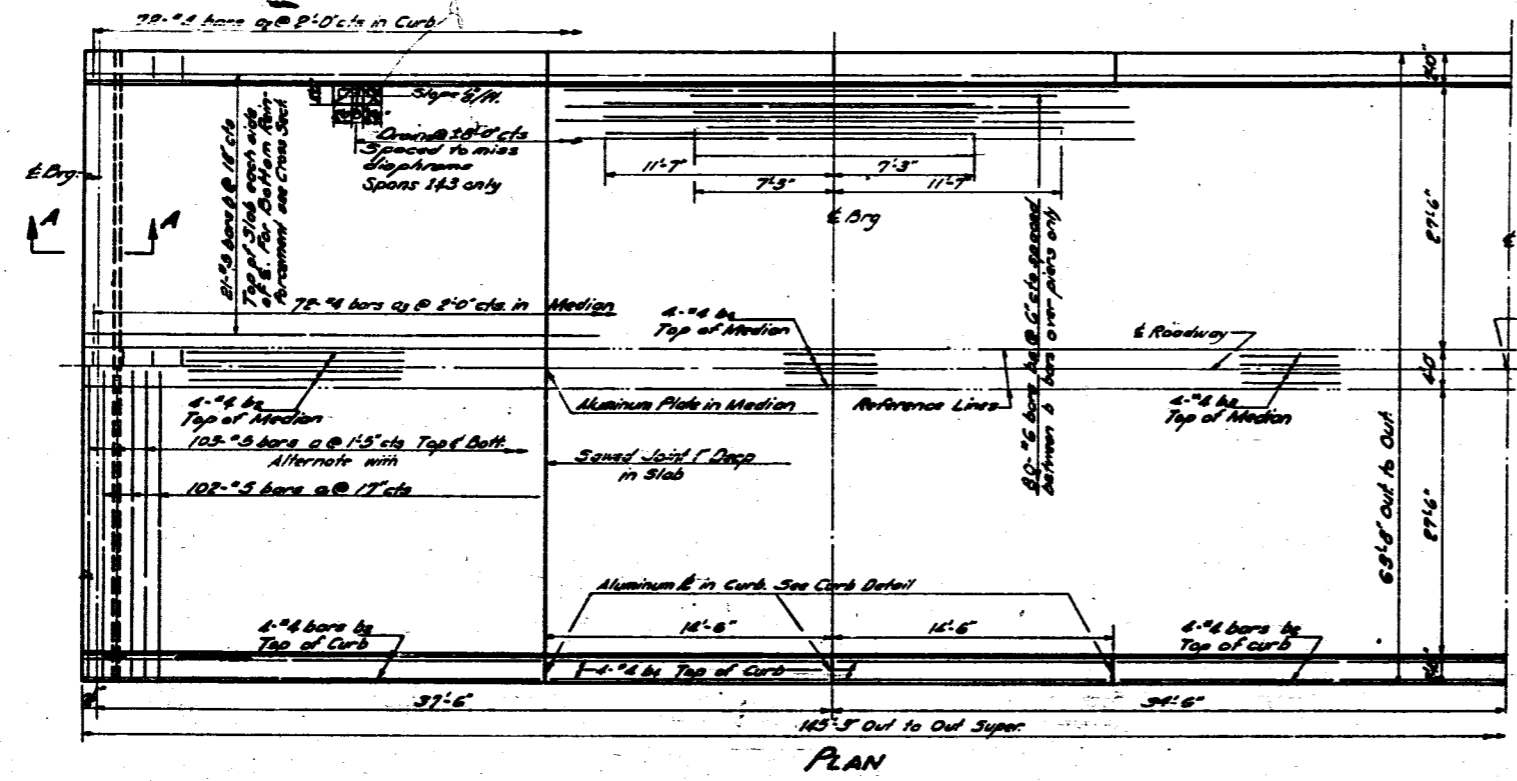
Added note at A.373 and G.7. 12/20/20



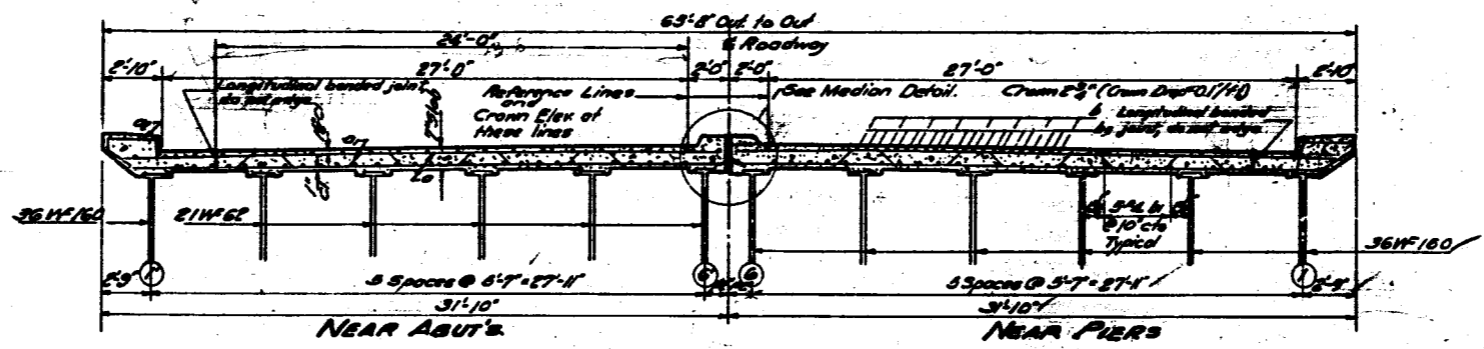
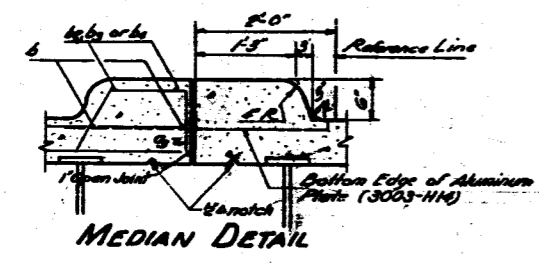
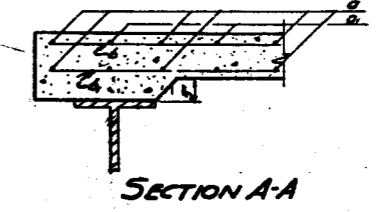
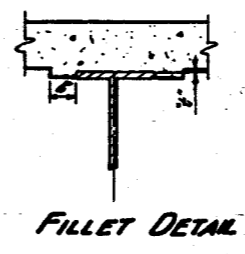
STATE OF ILLINOIS  
DEPARTMENT OF PUBLIC WORKS & BUILDINGS  
DIVISION OF HIGHWAYS

DATE	DESIGN	CHECK	SCALE	SHEET NO.
11-6	11-6	KARE	15	3
P.A. 6				8 SHEETS

**METHOD OF DETERMINING FILLET HEIGHT**  
After all structural steel has been erected elevations of the top flanges of the beams shall be taken at intervals not to exceed 10 ft. From these elevations subtract the increment of deflections for these points, determined from the D.L. Deflection Diagram. The elevations so obtained, subtracted from the Theoretical grade elevations, minus the floor thickness, equals the fillet heights above top of beam.



Cost of Aluminum Sheets and Floor Drains to be incidental to Contract.

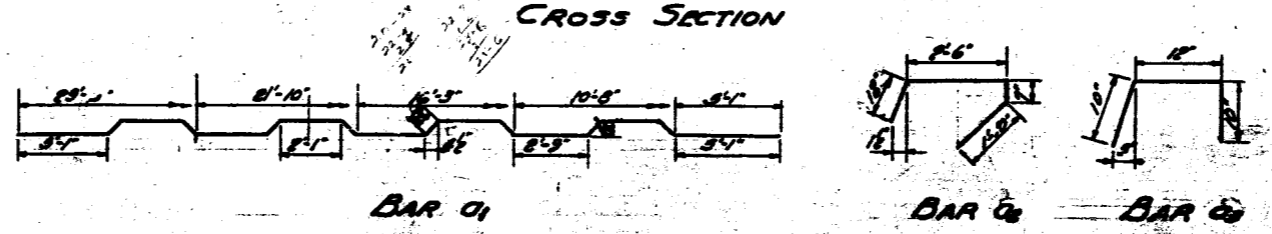


**BILL OF MATERIAL**

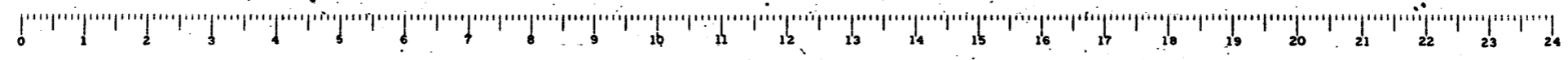
Bar No.	Size	Length	Shape
1	1/2"	30'-0"	
2	20#	31'-11"	curb
3	18#	31'-11"	17
4	18#	2'-0"	17
5	29#	22'-3"	
6	35#	22'-3"	
7	24	23'-8"	
8	24	20'-6"	
9	24	12'-8"	
10	160	18'-10"	
Class X Concrete		Cu. Yds.	24.3
Reinforcement Bars		Lbs.	32,000
Structural Steel		Lbs.	175,000

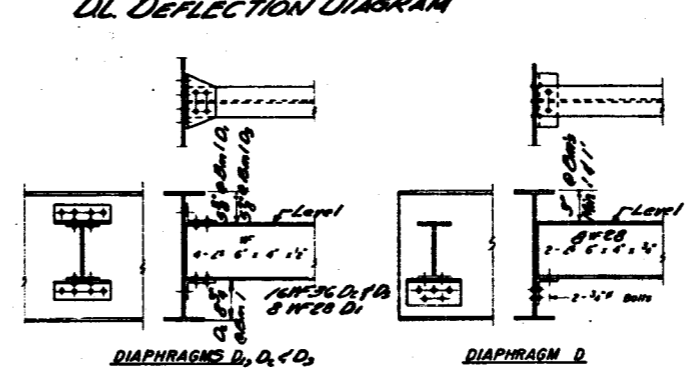
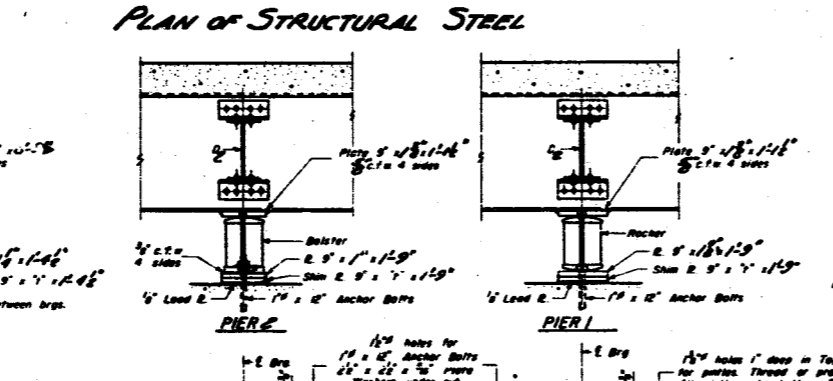
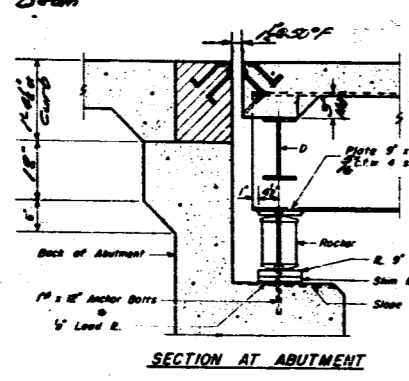
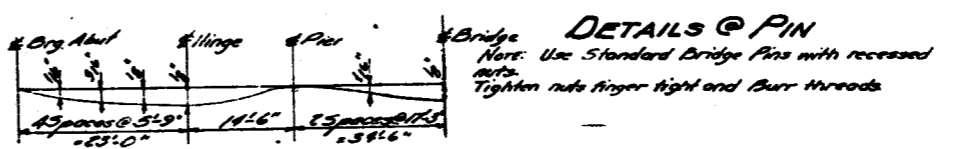
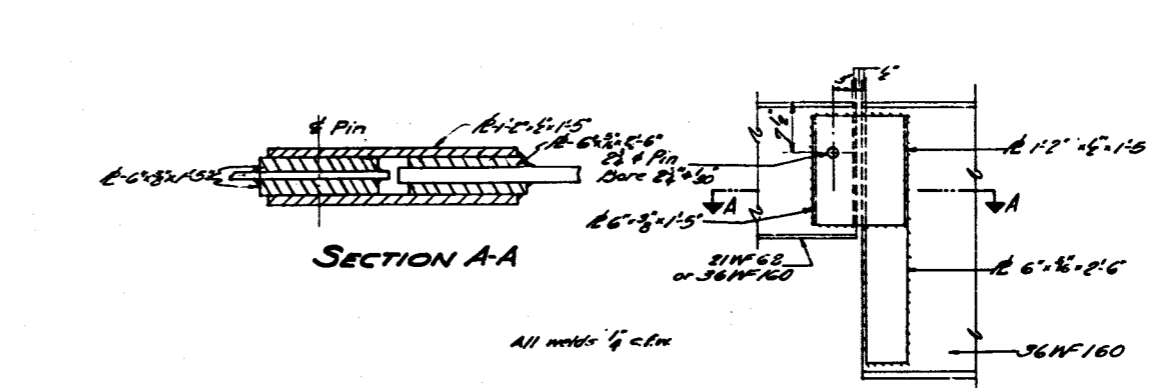
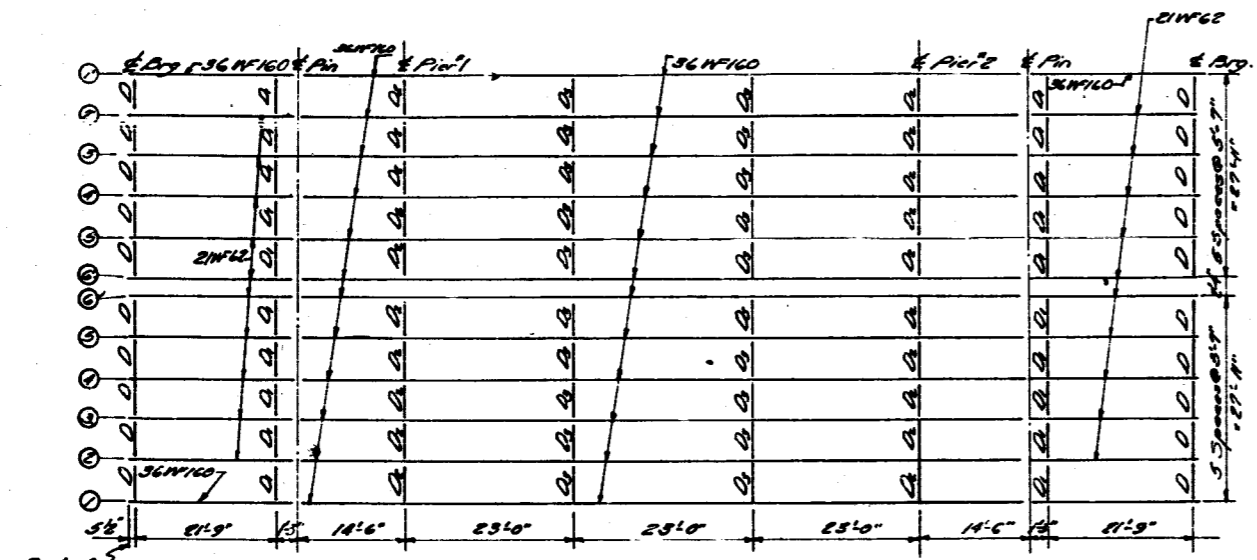
DESIGNED: *[Signature]*  
CHECKED: *[Signature]*  
DRAWN: *[Signature]*  
CHECKED: *[Signature]*

EXAMINED: *[Signature]*  
APPROVED: *[Signature]*



SUPERSTRUCTURE  
P.A. R. 6 SEC. 02-HB-3  
KANE COUNTY  
STA. 221+55.32

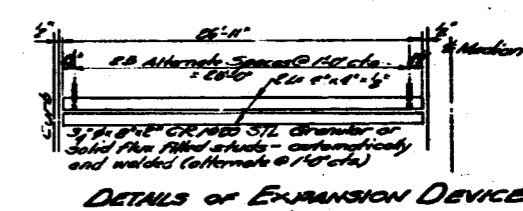
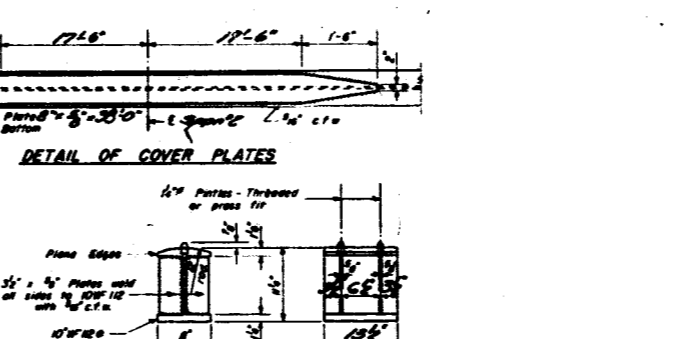
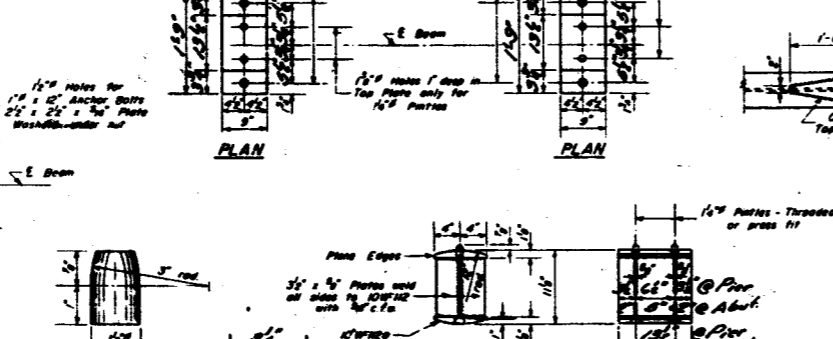
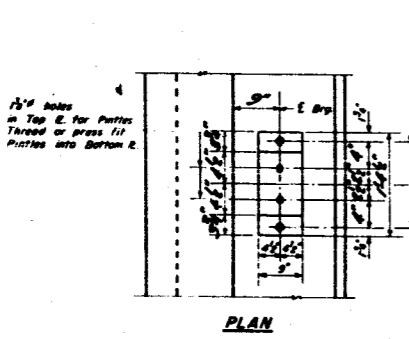




ELEVATION TOP OF BEAMS

Location	Org. R.A.	N. Nings	E. Nings	End E. AB
Elev. 0+7	750.70	750.58	748.85	748.44
0+8	750.75	750.63	748.90	748.49
0+9	750.80	750.68	748.95	748.54
0+0	750.85	750.73	749.00	748.59
0+1	750.90	750.78	749.05	748.64
0+2	750.95	750.83	749.10	748.69

Note: All beams are parallel



DESIGNED	Checked
CHECKED	Checked
DRAWN	Checked
CHECKED	Checked

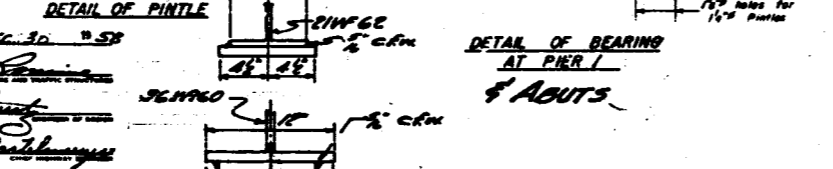
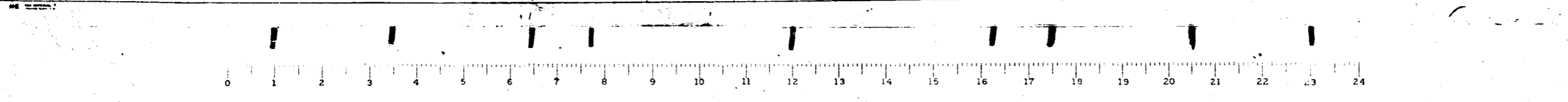


TABLE OF "I" DIMENSIONS

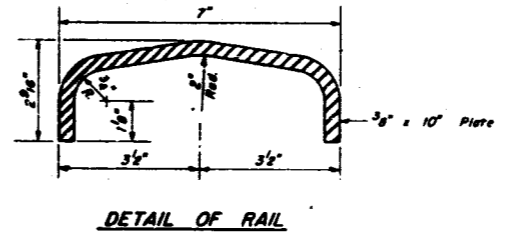
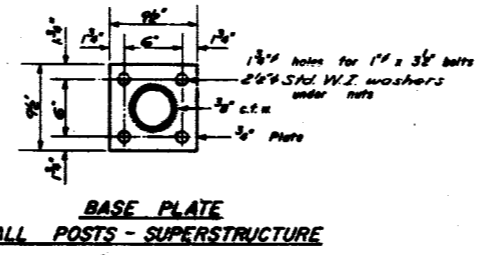
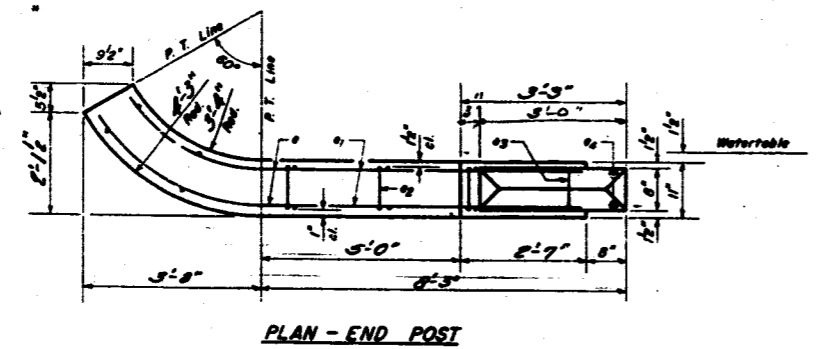
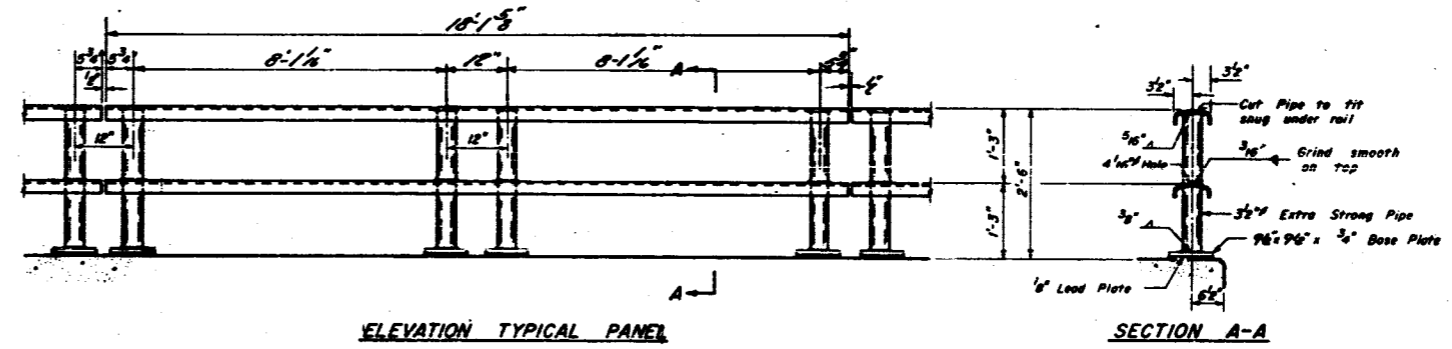
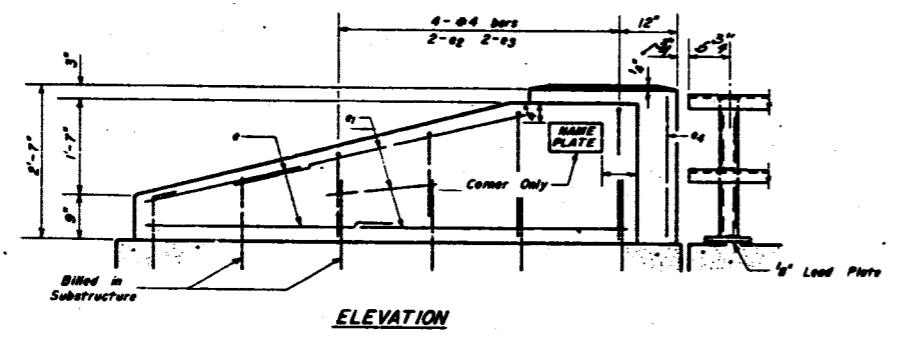
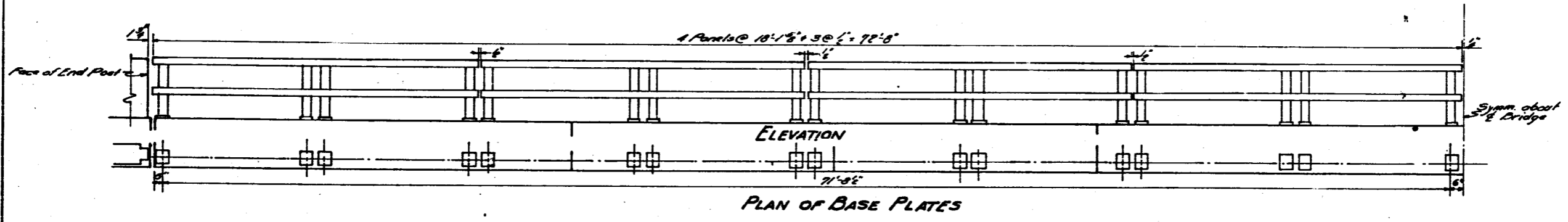
	1	2	3	4	5	6
ABUT.	—	3/4"	—	3/4"	—	—
PIER	3/4"	—	3/4"	—	3/4"	—

STRUCTURAL STEEL  
F.A. R. 6 SEC. BR-HB-6  
KANE COUNTY  
STA. 221+35.32



STATE OF ILLINOIS  
DEPARTMENT OF PUBLIC WORKS & BUILDINGS  
DIVISION OF HIGHWAYS

PROJECT NO.	SECTION	EMPH.	DATE	SHEET NO.
6	BR-88-4	KANE	15	7
SHEETS				



**BILL OF MATERIAL**

Handrail Concrete	Cu. Yd.	2.9
Reinforcement Bars	Lbs.	250
Metal Handrail	Lin. Ft.	691

Note: Provide 2-1/2" x 1-1/2" shim plates for 50% of rail posts. Punch shim plates same as base plate.

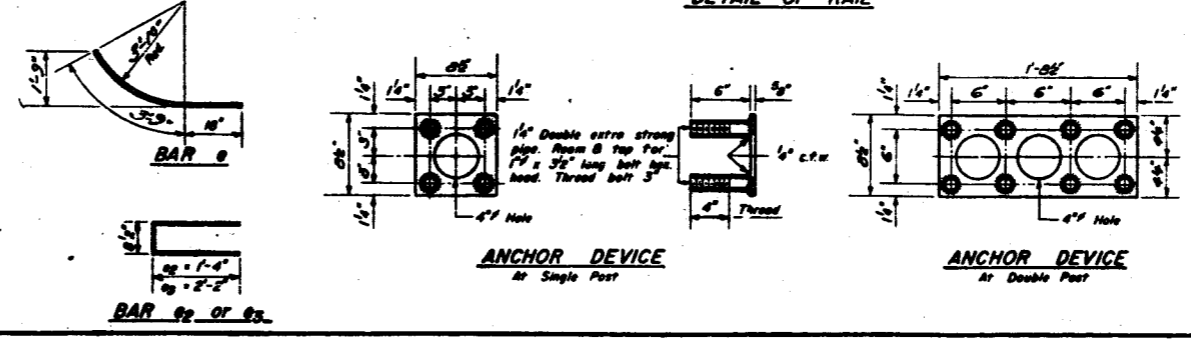
DESIGNED: *[Signature]*  
CHECKED: *[Signature]*  
DRAWN: *[Signature]*  
CHECKED: *[Signature]*

EXAMINED: *[Signature]*  
PASSED: *[Signature]*  
APPROVED: *[Signature]*

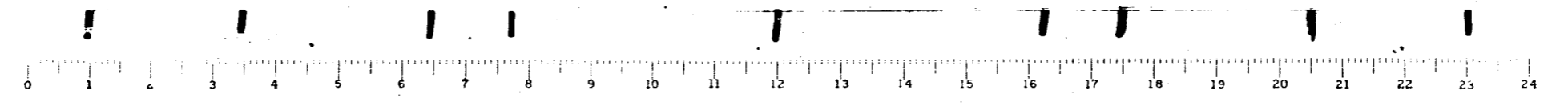
DEC. 30 1958

**BILL OF REINFORCEMENT**

Bar	No.	Size	Length	Shape
1	16	#4	3'-5"	
2	24	#4	2'-0"	
3	8	#4	5'-0"	
4	8	#4	5'-0"	
5	8	#4	2'-3"	

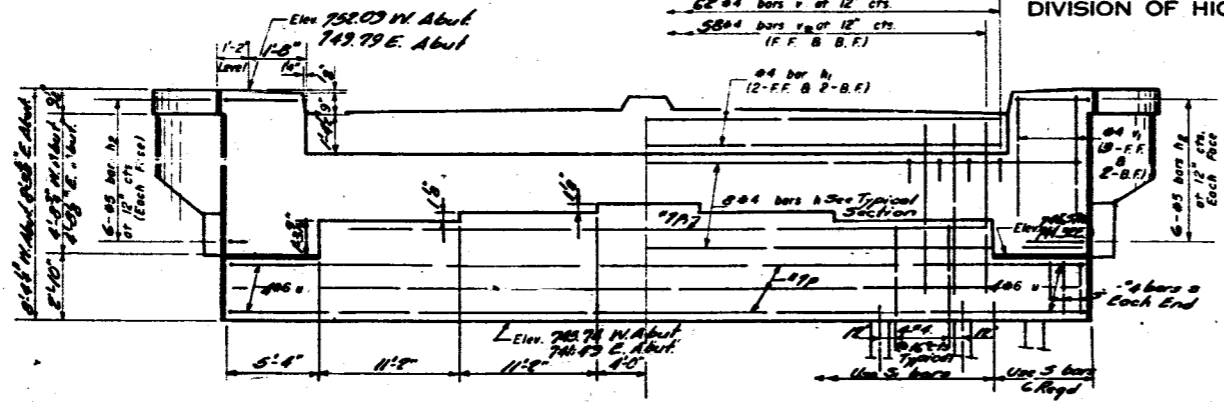


**HANDRAIL DETAILS**  
F.A. RT. 6 SEC 8-R-1136  
KANE COUNTY  
STA. 221+95.32

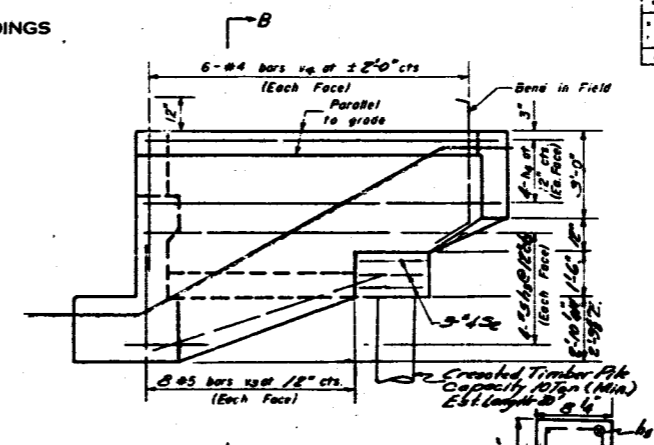


STATE OF ILLINOIS  
DEPARTMENT OF PUBLIC WORKS & BUILDINGS  
DIVISION OF HIGHWAYS

ROUTE NO.	SECTION	CHART	TOTAL SHEETS	SHEET NO.
1-6	110-6	KANE	16	8
DESIGNED BY	DATE	DESIGNED FOR PROJECT		



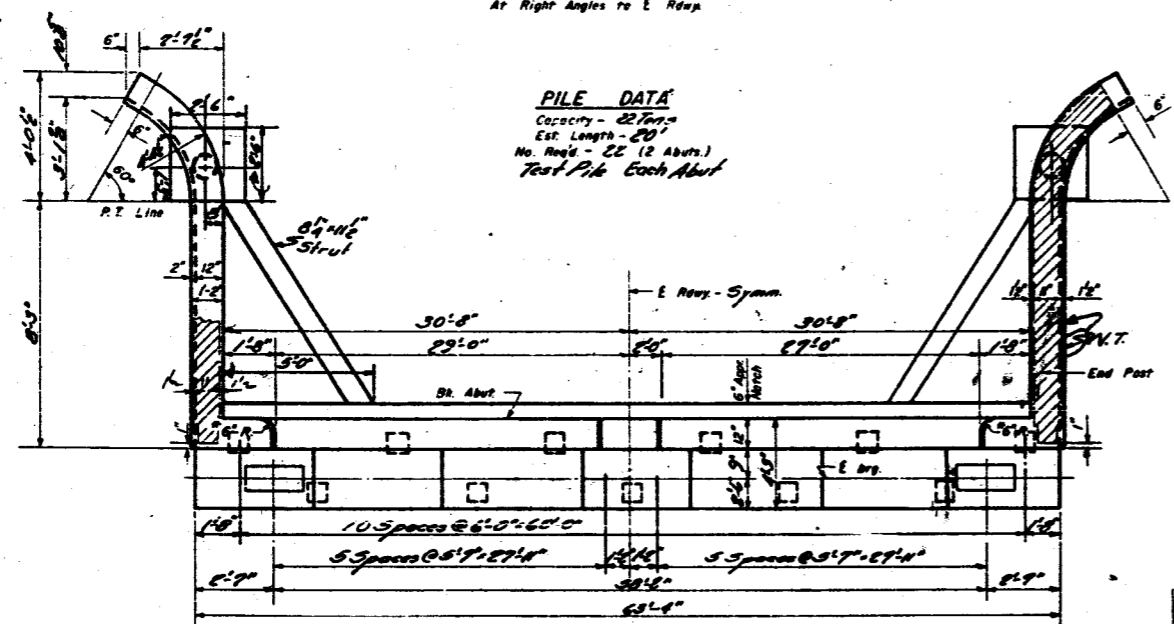
ELEVATION  
At Right Angles to E. Road



SIDE ELEVATION

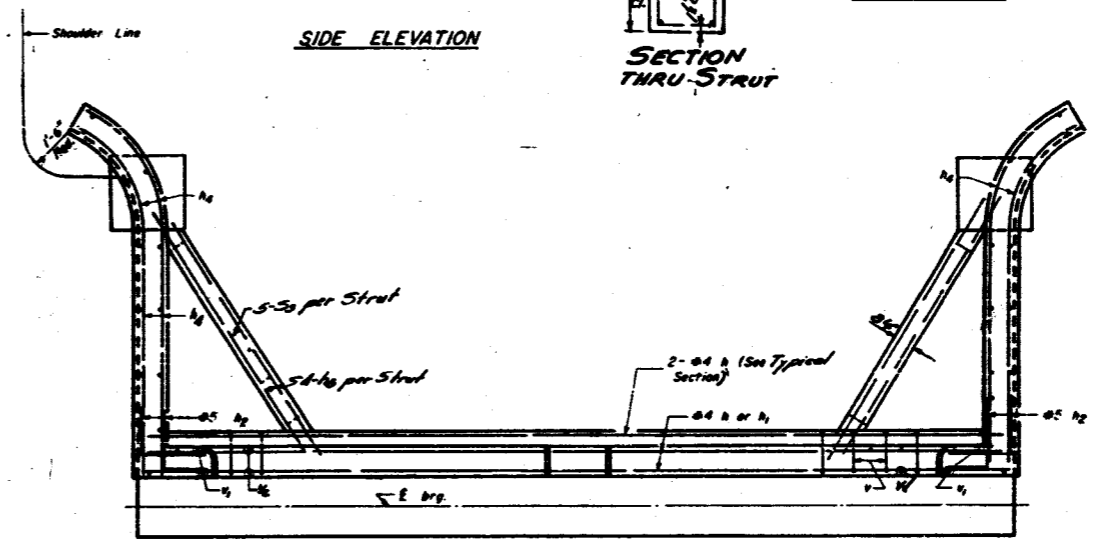
SECTION B-B

SECTION THRU STRUT



PILE DATA  
Capacity - 22 Tons  
Est. Length - 20'  
No. Piles - 22 (2 Abut.)  
Test Pile Each Abut.

PLAN OF ABUTMENT  
Dimensions



Note: Contractor shall construct curb without radius when a curb & gutter are to be used on bridge approaches (See Road Plans).

PLAN OF ABUTMENT  
Reinforcement & Pile Spacing

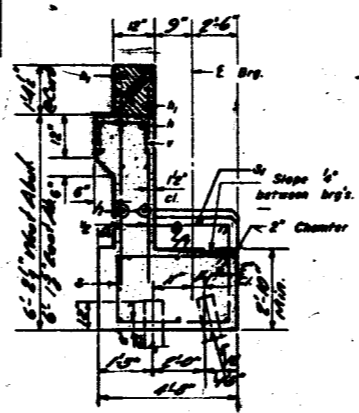
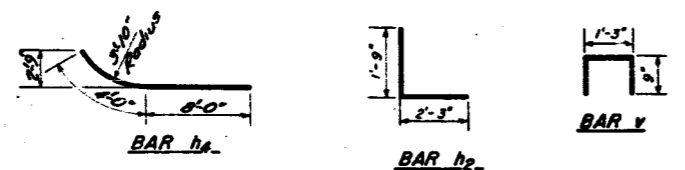
BILL OF REINFORCEMENT

Bar	No.	Size	Length	Shape	Bar	No.	Size	Length	Shape
1	32	#4	37'-6"	—	16	#6	12'-5"	—	—
2	16	#4	30'-0"	—	17	#6	6'-6"	—	—
3	48	#4	8'-0"	U	18	#4	6'-0"	—	—
4	36	#4	8'-0"	—	19	#4	13'-7"	—	—
5	36	#4	18'-0"	—	20	#4	16'-0"	—	—
6	16	#6	11'-0"	—	21	#4	9'-5"	—	—
7	32	#4	35'-0"	—	22	#4	9'-0"	—	—
8	16	#4	30'-0"	—					
9	16	#4	13'-7"	—					
10	64	#4	16'-0"	—					
11	16	#4	9'-5"	—					
12	20	#4	9'-0"	—					

BILL OF MATERIAL

Item	Unit	Quantity
Class X Concrete	Cu. Yd.	128.8
Reinforcement Bars	Lb.	7660
Concrete Piles	Lin. Ft.	400
Test Pile Caps	Each	Two
Concrete Piles	Lin. Ft.	20

ABUTMENTS  
F.A. R.C. SEC 8-110-6  
KANE COUNTY  
STA. 811+35.52

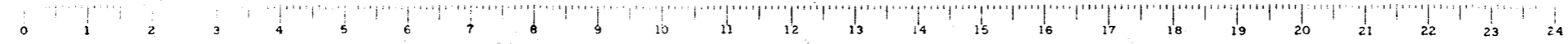


TYPICAL SECTION THRU ABUTMENT

BAR S, S, S, S

DESIGNED: *[Signature]*  
CHECKED: *[Signature]*  
DRAWN: *[Signature]*  
EXAMINED: *[Signature]*  
PASSED: *[Signature]*  
APPROVED: *[Signature]*

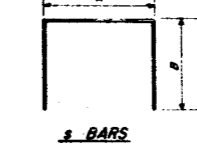
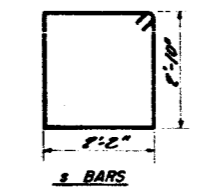
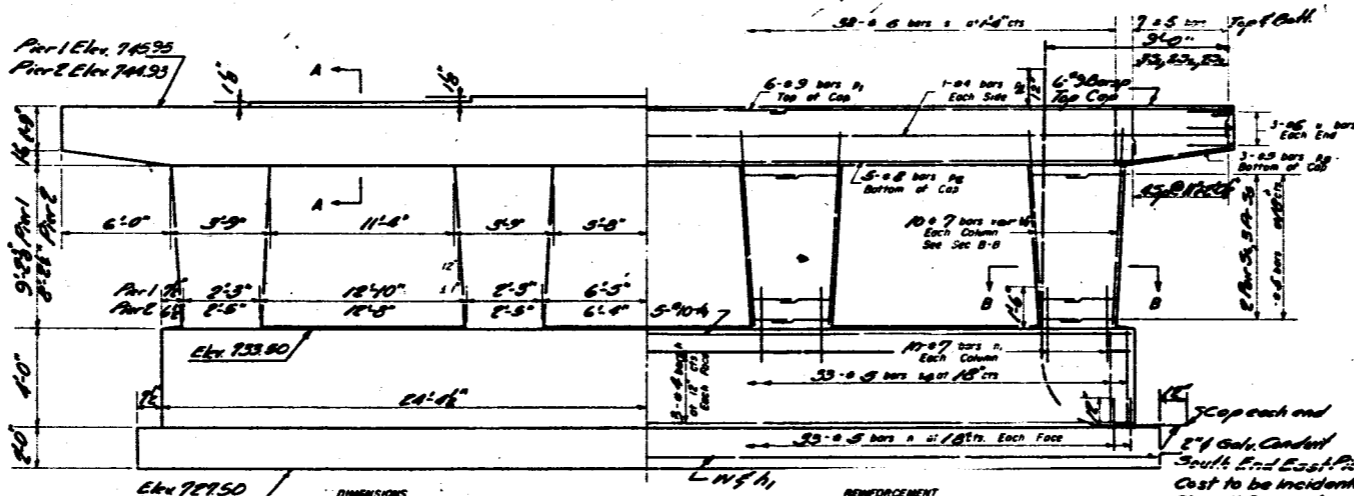
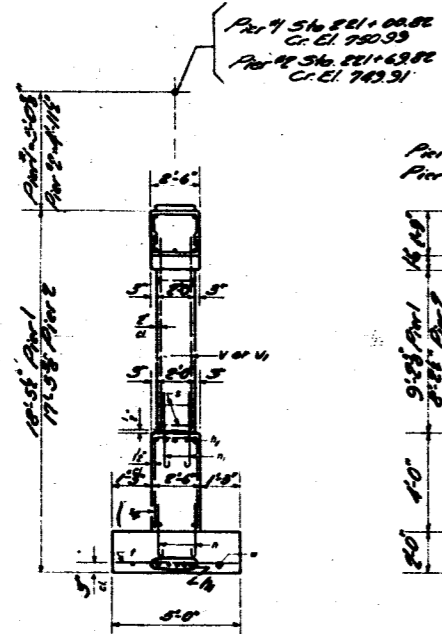
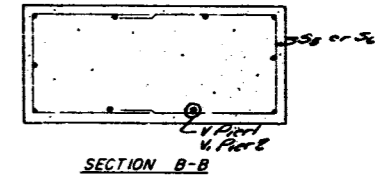
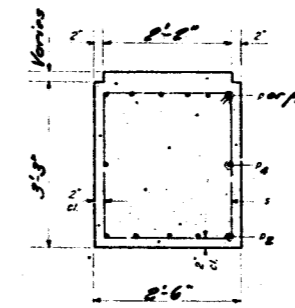
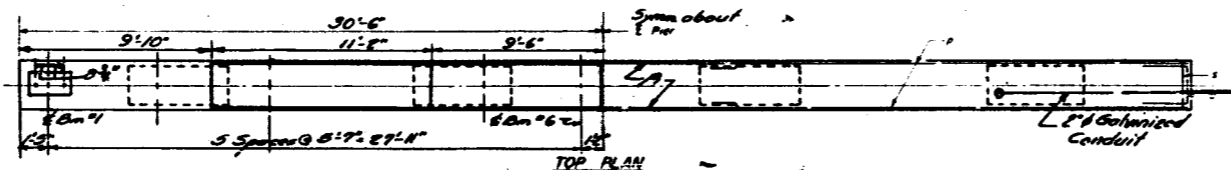
DEC 30 1958



STATE OF ILLINOIS  
DEPARTMENT OF PUBLIC WORKS & BUILDINGS  
DIVISION OF HIGHWAYS

DATE	REVISION	COUNTY	TOTAL SHEETS	SHEET NO.
11-1-32	NO. 6	KANE	15	9
DESIGNED BY		DRAWN BY		CHECKED BY
J. A. G.		V. A. S.		R. B. S.

SHEET NO. 6  
OF SHEETS



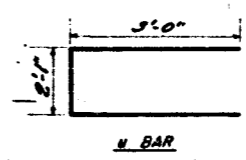
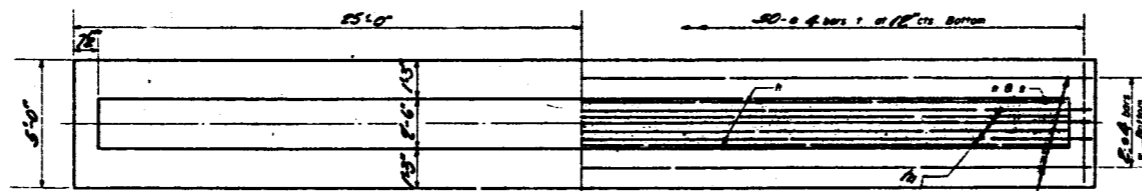
A & B DIMENSIONS

Bar	A	B
1	2'-2"	2'-3"
2	2'-2"	1'-9"
3	2'-2"	1'-6"
4	2'-2"	3'-9"
5	1'-8"	2'-8"
6	1'-8"	1'-11"

PIER 2  
BILL OF MATERIAL

Bar	No.	Size	Length	Shape
1	36	#4	25'-0"	U
2	60	#4	16'-3"	U
3	132	#3	8'-7"	U
4	80	#7	9'-10"	U
5	24	#3	25'-3"	U
6	12	#3	17'-0"	U
7	50	#3	17'-0"	U
8	12	#3	7'-0"	U
9	8	#4	28'-0"	U
10	24	#3	10'-9"	U
11	24	#3	6'-8"	U
12	16	#3	5'-8"	U
13	16	#3	5'-8"	U
14	66	#3	9'-8"	U
15	48	#4	7'-0"	U
16	36	#4	5'-6"	U
17	100	#4	8'-9"	U
18	12	#6	8'-1"	U
19	40	#7	12'-0"	U
20	40	#7	11'-0"	U
21	20	#4	16'-0"	U

Class II Concrete Co. Vol. 1549  
Reinforcement Bars Lbs. 2010

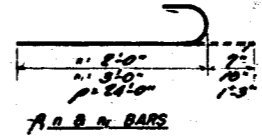


DESIGNED: J. A. G.  
CHECKED: V. A. S.  
DRAWN: V. A. S.  
CHECKED: R. B. S.

EXAMINED: M. B. S.  
PASSED: E. S. S.  
APPROVED: R. B. S.

DEC 30 1932

Max. Soil Pressure = 3.87 tons/sq ft  
Avg. Soil Pressure = 2.57 tons/sq ft



PIERS  
PART 6 SEC 8-HB-6  
KANE COUNTY  
STA. 221+35.32

STATE OF ILLINOIS  
DEPARTMENT OF PUBLIC WORKS & BUILDINGS  
DIVISION OF HIGHWAYS

PROJECT	DATE	BY	NO.	SHEETS
6 BR-10-6	KANE	18	10	3 SHEETS

**EAST ABUT**

Spring No. 1  
Spring located at Station 222+10, 15 Ft Lt Centerline.

Description	Elevation	Depth	Notes
Surface of Ground	732.1		
Dark sandy silty gravelly clay.	729.0		
Very dense brown well graded subangular gravel.	727.0	73	Bottom of Foot Abut
	726.0		
	724.5	74	
	723.5		
	722.5		
Medium brown well graded subangular gravel.	721.0	27	
	720.0		
Very dense brown well graded fine sand.	719.5	114	
	717.5		
	717.0	124	
Very dense brown well graded subangular gravel.	716.0		
	714.5	110	
	713.5		
	713.0		
Very stiff gray clay till.	712.0	25	2.66
	711.0		
	710.0		
	709.5	16	1.52
	708.5		
Stiff gray clay till.	707.0	16	1.42
	706.0		
	704.5	15	1.38
	703.5		
	703.0		
	702.0	25	2.75
Very stiff gray clay till.	701.0		
	699.5	32	3.10
	698.5		
	697.0	29	3.55
	696.0		

**PIER 2**

Spring No. 2  
Spring located at Station 221+71, 15 Ft Rt Centerline.

Description	Elevation	Depth	Notes
Surface of Ground	732.0		
Black silty clay.	731.0		
Very stiff mottled clay till.	727.5		
	727.0	28	Bottom of Pier
	726.0		
Very dense brown subangular well graded gravel.	724.5	64	
	723.5		
	722.5		
	722.0	20	
	721.0		
Medium brown subangular poorly graded gravel.	719.5	19	
	718.5		
	717.5		
	717.0	20	
Very dense brown subangular poorly graded silty clayey gravel.	716.0		
	714.5	20	
Stiff gray clay till.	713.5		Test Sample
	712.0	7	1.55
	711.0		
	709.5	13	1.92
Stiff gray clay till.	708.5		
	707.0	12	1.72
	706.0		
	705.0		
	704.5	15	3.14
	703.5		
	702.0	26	3.55
Very stiff gray clay till.	701.0		
	699.5	27	3.68
	698.5		
	698.0		
Hard gray clay till.	697.0	31	4.00
	696.0		
	695.0		
Very stiff gray clay till.	694.5	33	3.72
	693.5		

**PIER 1**

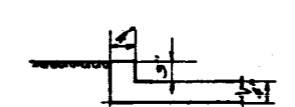
Spring No. 3  
Spring located at Station 221+00, 15 Ft Lt Centerline.

Description	Elevation	Depth	Notes
Surface of Ground	732.0		
Medium brown silty sand and gravel.	728.5		
Dense brown subangular well graded gravel.	727.5	35	Bottom of Pier
	726.5		
	725.5		
	725.0	56	
Very dense brown subangular poorly graded gravel.	724.0		
	722.5	32	
	721.5		
	720.5	47	
	719.0		
Dense brown subangular poorly graded gravel.	717.5	41	
	716.5		
	715.5	102	
Very dense brown subangular poorly graded gravel.	714.0		
	712.5	145	
Very dense brown subangular poorly graded gravel.	711.5		
	710.0	REMOVAL	
	709.0		
Hard gray stoney clay till.	708.5	85	6.54
	707.5		
	706.5		

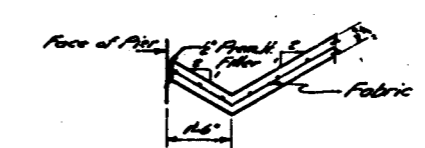
**WEST ABUT**

Spring No. 4  
Spring located at Station 220+02, 15 Ft Rt Centerline.

Description	Elevation	Depth	Notes
Surface of Ground	732.0		
Stiff black sandy silty clay.	729.5		
Very dense brown poorly graded subangular gravel.	727.0	77	Bottom of West Abut
	726.0		
	725.0	34	
	723.5		
	722.0	37	
Dense brown well graded subangular gravel.	721.0		
	719.5	40	
	718.5		
	717.0	46	
	716.0		
	715.0		
Very dense brown well graded subangular gravel.	714.5	56	
	713.5		
Very dense brown well graded subangular gravel.	712.0	68	
	711.0		
	710.0		
	709.5	52	7.62
Hard gray stoney clay till.	708.5		
	707.0	78	Impured
	706.0		



SECTION A-A  
See Sheet #1



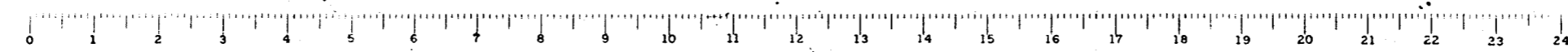
SECTION THRU GUTTER

Station 221+35.38  
Built 125 ft  
State of Illinois  
PART 6 SEC BR-10-6  
P.A. Plan U-13 (3)  
Loading 1400-516

NAME PLATE DATA  
See Standard 0113

IN CHARGE *[Signature]*  
CHECKED *[Signature]*  
EXAMINED *[Signature]*  
APPROVED *[Signature]*  
DATE DEC 30 1958

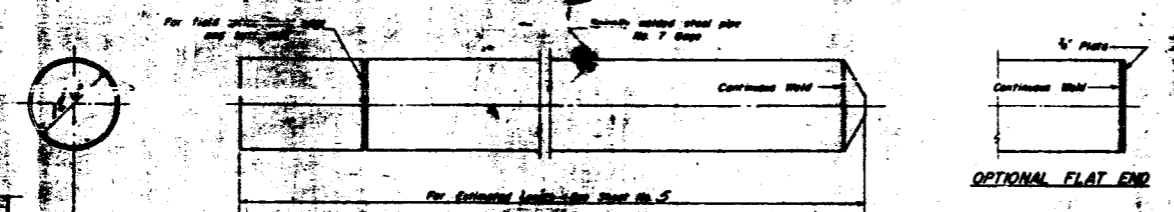
DRIVING DATA  
PART 6 SEC BR-10-6  
KANE COUNTY  
STA 221+35.38



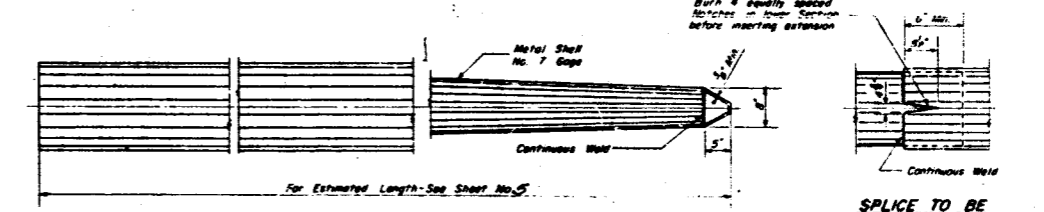


STATE OF ILLINOIS  
DEPARTMENT OF PUBLIC WORKS & BUILDINGS  
DIVISION OF HIGHWAYS

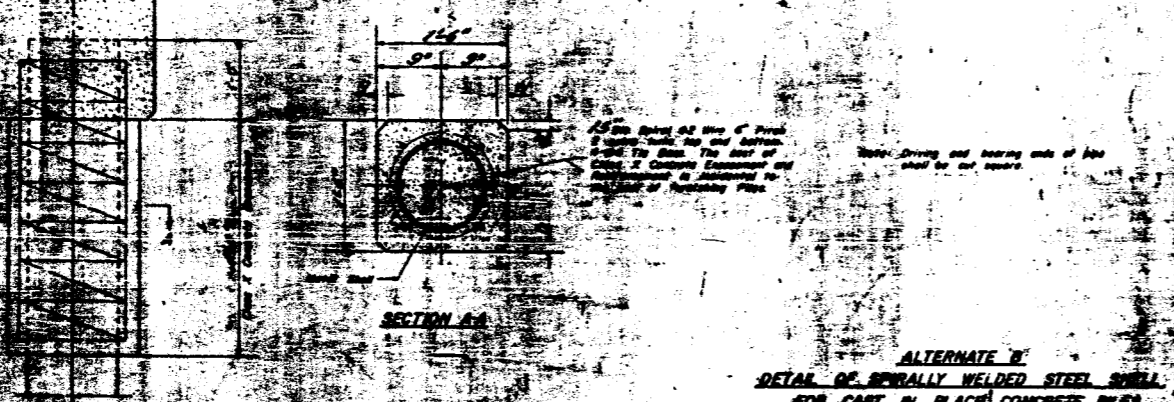
PROJECT NO.	SECTION	DATE	SHEET NO.	TOTAL SHEETS
BR-40-6	KANE	15	11	2 SHEETS



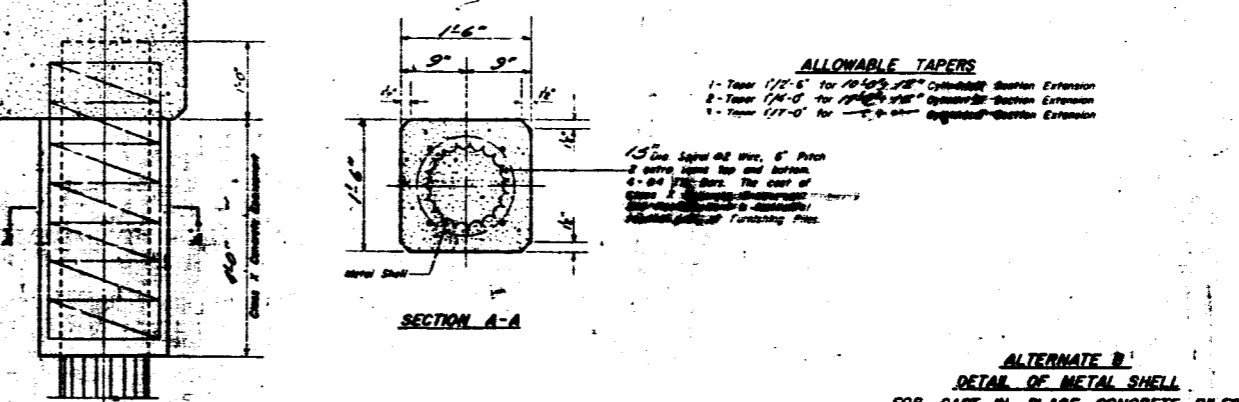
OPTIONAL FLAT END



SPLICE TO BE USED AS REQUIRED

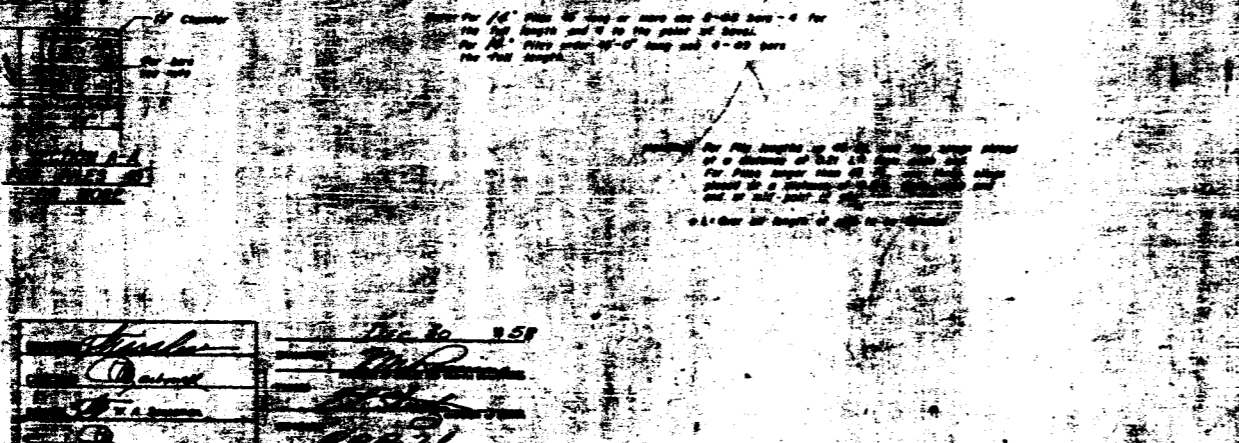


ALTERNATE B  
DETAIL OF SPIRALLY WELDED STEEL SHELL  
FOR CAST IN PLACE CONCRETE PILES



- ALLOWABLE TAPERS**
- 1-Taper 1/2"-6" for 10-12" dia. Openended Section Extension
  - 2-Taper 1/4"-0" for 12-14" dia. Openended Section Extension
  - 3-Taper 1/2"-0" for 14-16" dia. Openended Section Extension

ALTERNATE B  
DETAIL OF METAL SHELL  
FOR CAST IN PLACE CONCRETE PILES



ALTERNATE A  
DETAIL OF PRECAST CONCRETE PILE

PILE DETAILS  
F.A. RILEY & SONS  
KANE COUNTY  
STA 221 + 35.52