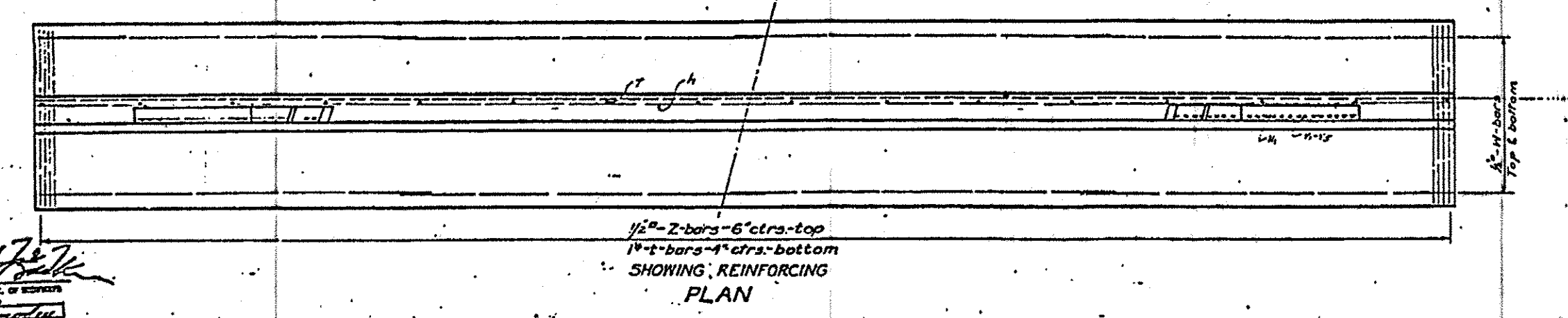
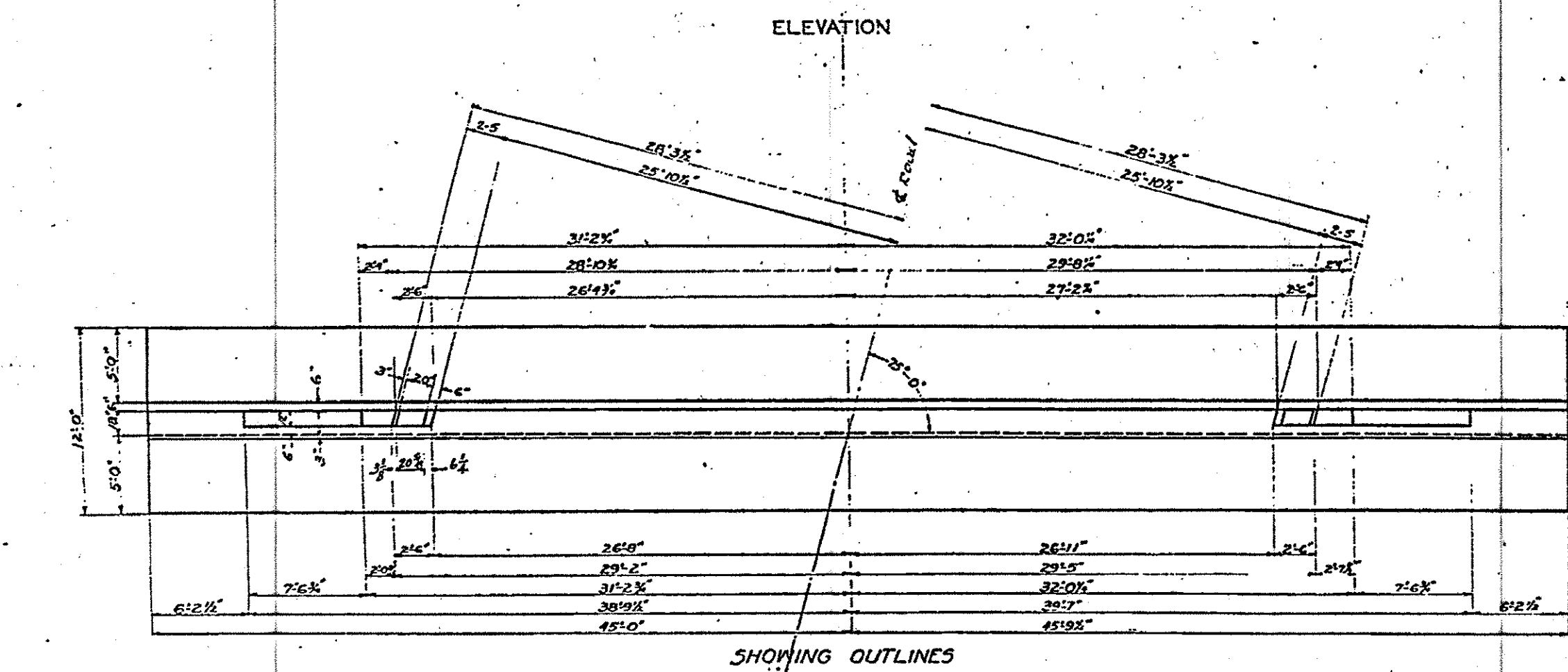
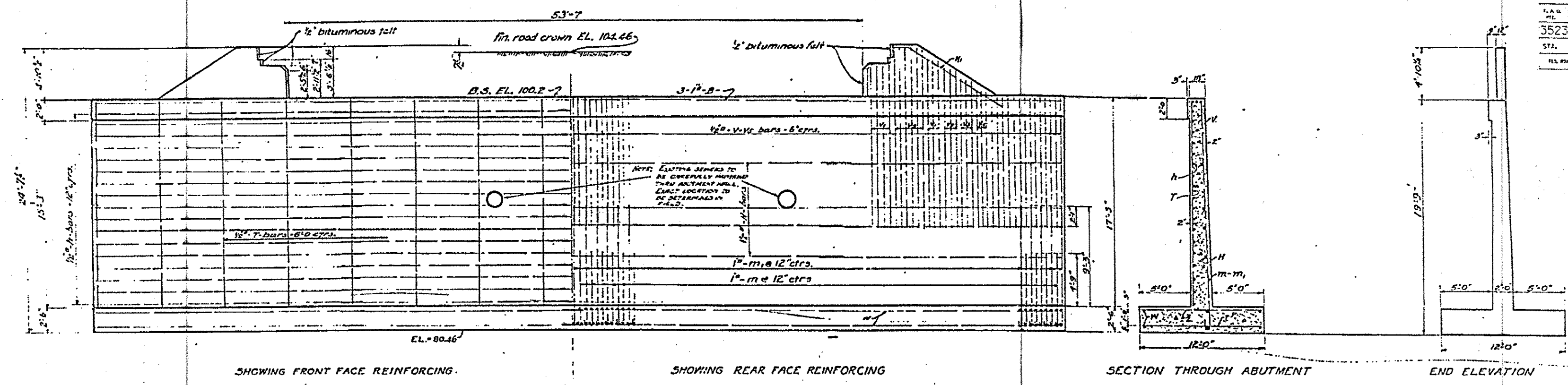


PLAN	SECTION	COUNT	DATE
3523	12891	COOK 22	14
STA.	TO STA.		
FILE NO. PROJ. NO.	BLK. NO.	FILE NO. PROJECT	

SHEET 9 OF 9

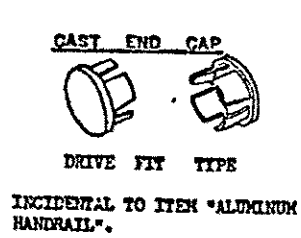
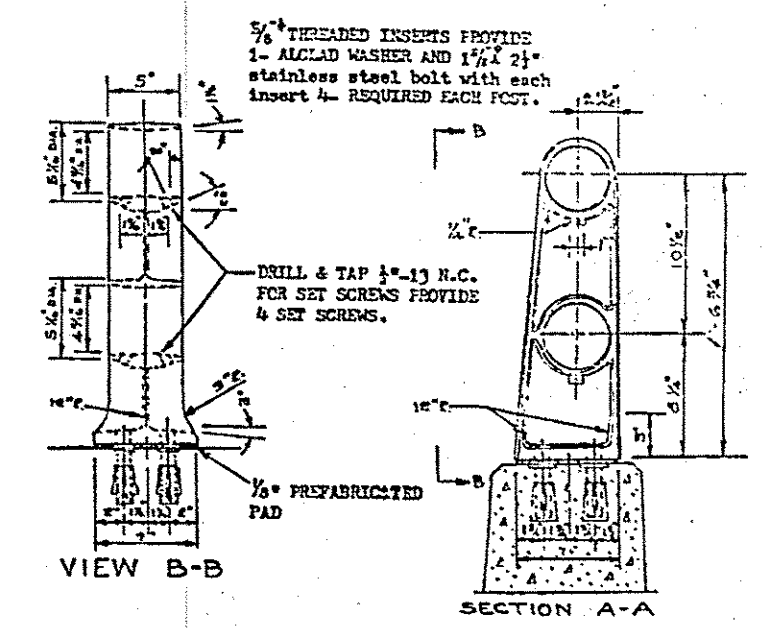


SHOWING FRONT FACE REINFORCING. SHOWING REAR FACE REINFORCING. SECTION THROUGH ABUTMENT. END ELEVATION.

ELEVATION

SHOWING OUTLINES

1/2" - 2-bars - 6' ctrs - top  
1/4" - 4-bars - 4' ctrs - bottom  
SHOWING REINFORCING PLAN



NOTE:  
 ALL POSTS SHALL BE PLACED NORMAL TO PARAPET.  
 ALL POSTS SHALL BE OF ALUMINUM CONFORMING TO ASTM SPECIFICATION B-108 ALLOY SG-708-T6.  
 ALL RAIL TUBING SHALL BE OF ALUMINUM CONFORMING TO ASTM SPECIFICATION B-235 ALLOY GS-11A-T6.  
 ALCLAD WASHERS SHALL BE MADE FROM SHEET CONFORMING TO ASTM SPECIFICATION B-209 ALLOY CLAD CG-42A-T4.  
 RAIL TUBING MAY BE CUT TO RANDOM LENGTHS.  
 FOR MATERIAL COMPOSITION OF PREFABRICATED PAD, SEE ARTICLE 54.9 (F), ( BEARING AND ANCHORAGE), OF THE STANDARD SPECIFICATIONS.  
 SET SCREWS SHALL BE OF ALUMINUM CONFORMING TO ASTM SPECIFICATION B-211 ALLOY CG-42A-T4.

7	182	1 <sup>st</sup>	6'-6"
7	182	1 <sup>st</sup>	4'-5"
1	24	1 <sup>st</sup>	26'-0"
REINFORCING LBS. 44503			
DNC. CU. YDS. = 413.67			

FOR INFORMATION ONLY

ILLINOIS DEPARTMENT OF TRANSPORTATION

RAND ROAD  
 OVER DES PLAINES RIVER  
 SN 016-0362

SCALE: VERT. DATE  
 HORIZ. DRAWN BY GARD  
 CHECKED BY TMS