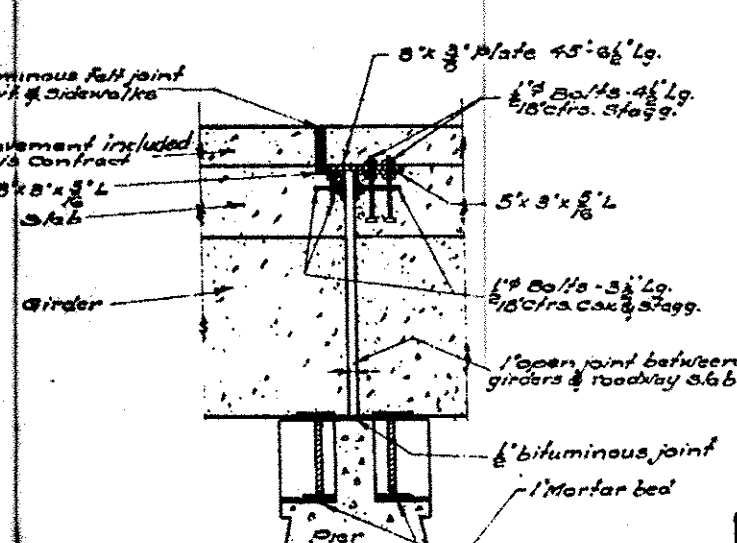
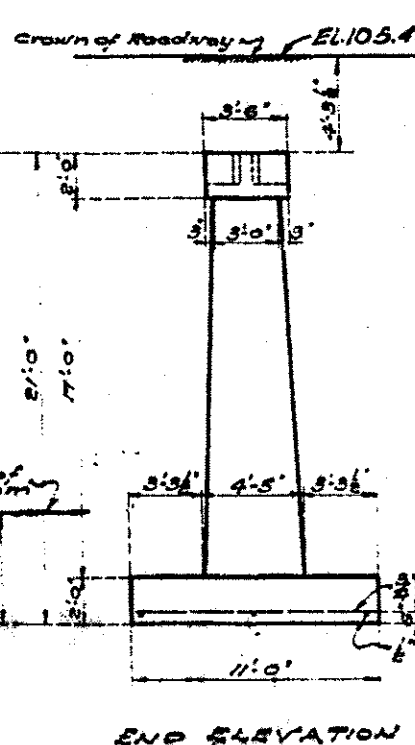
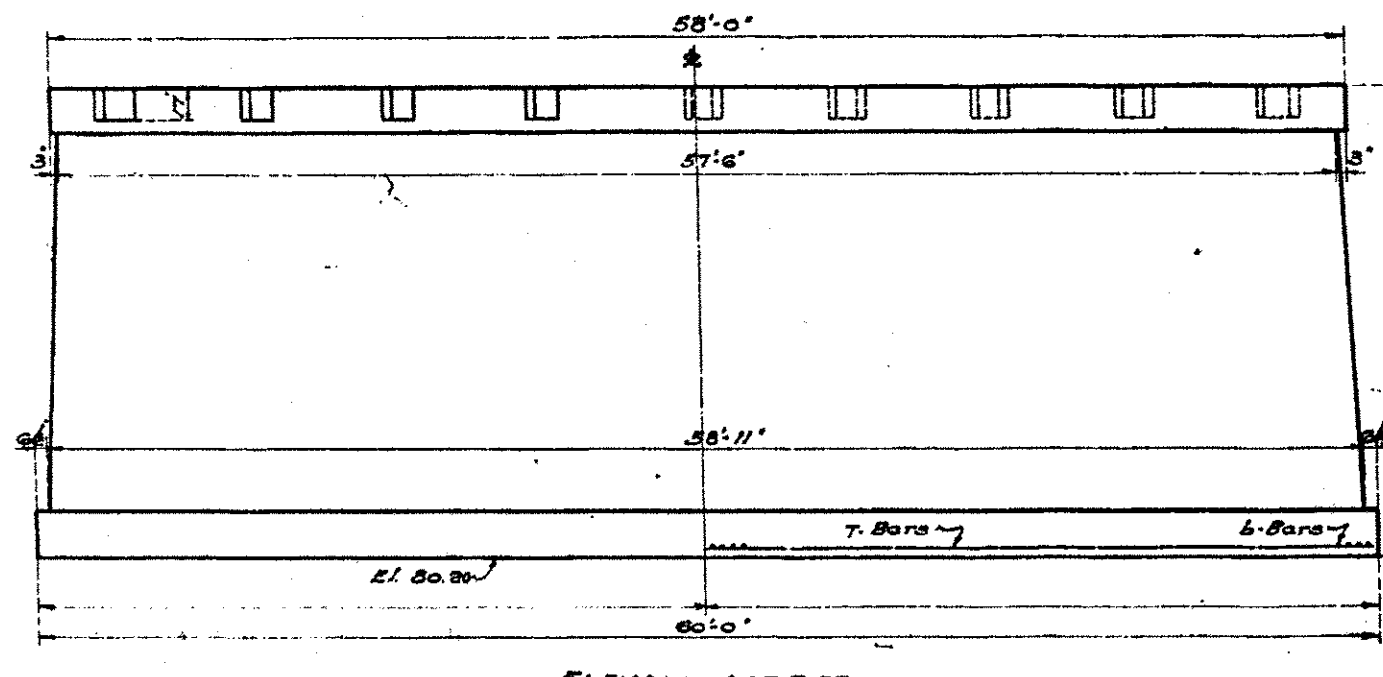
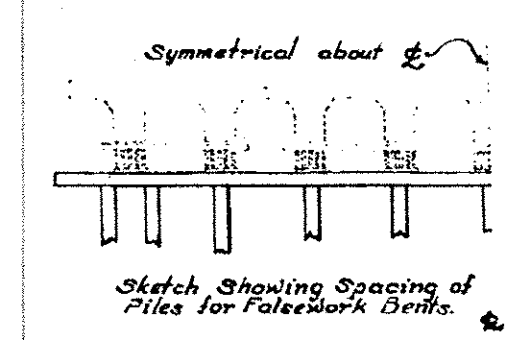
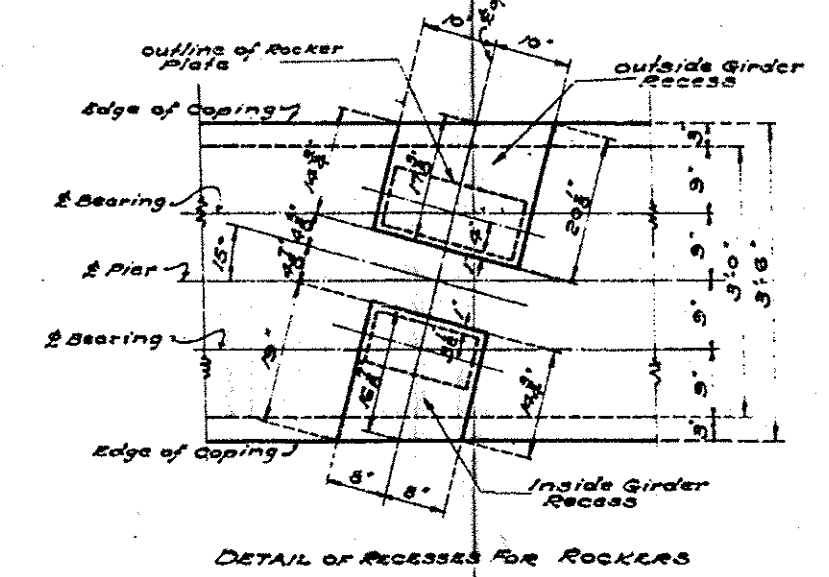
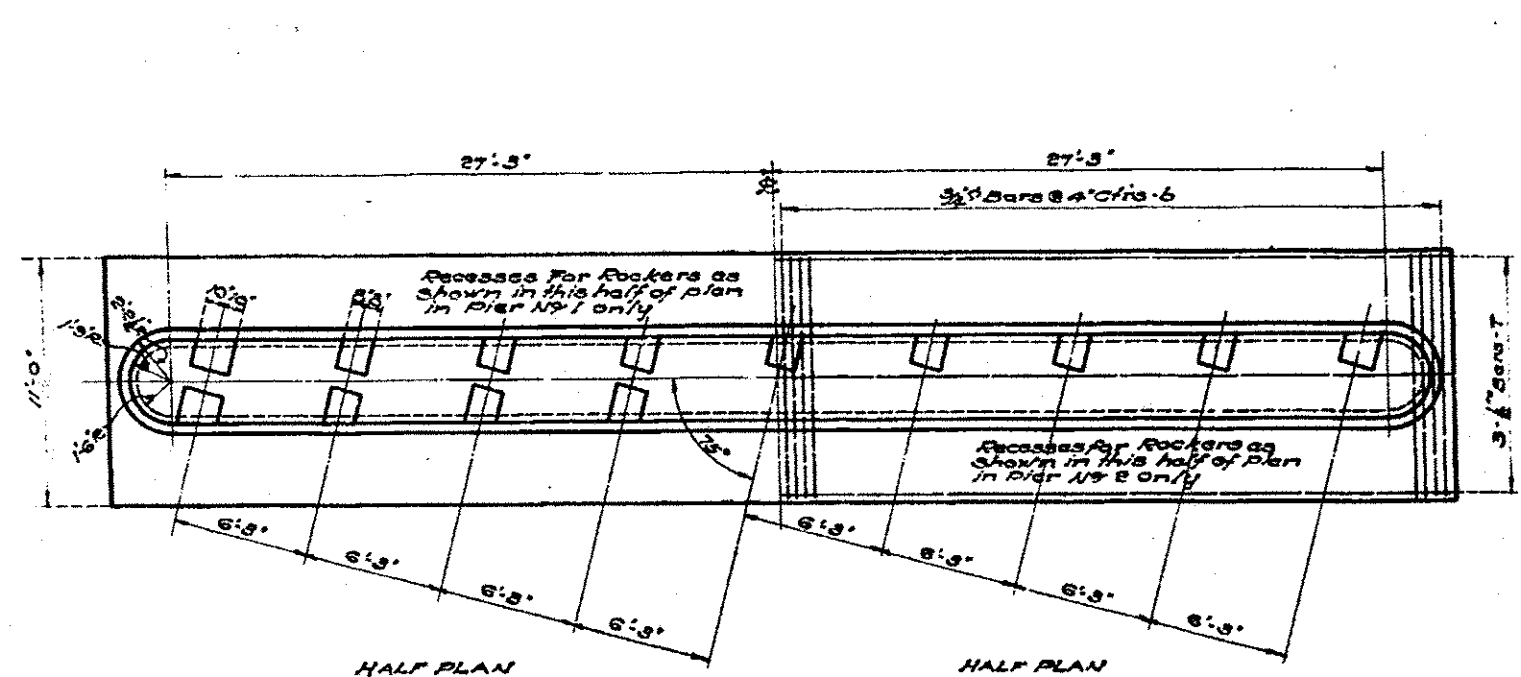
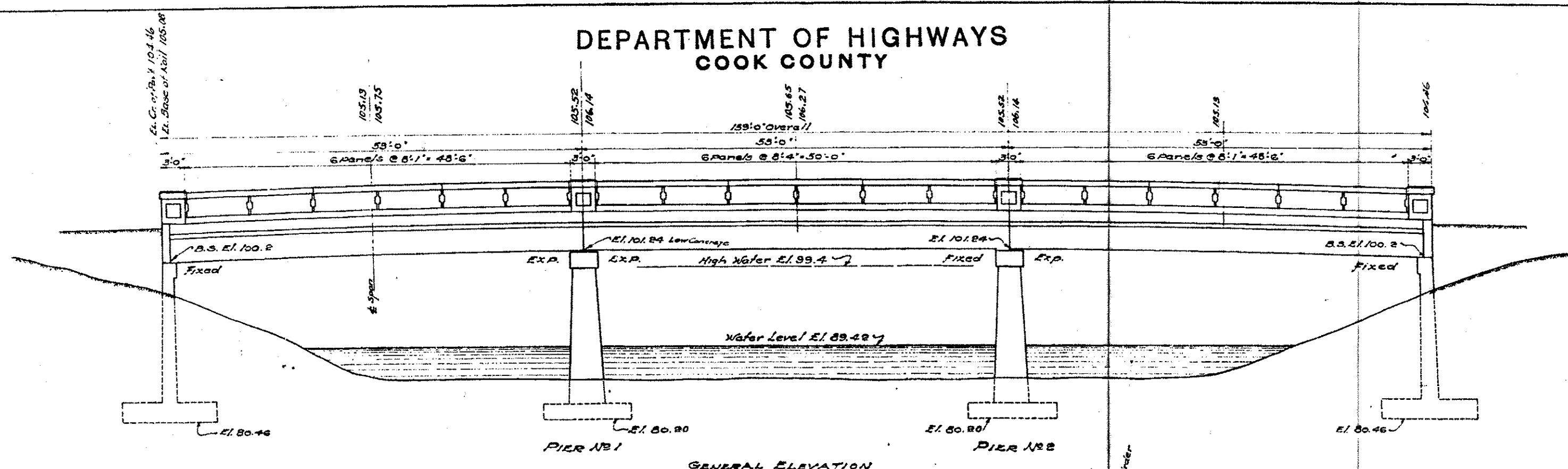


DEPARTMENT OF HIGHWAYS
COOK COUNTY

State A-1	Year	Sheet No.	Total Sheets
5	1927	3	5

SECTION 1289-150



FOR TWO PIERS

Bars	N ^o	Size	Length
L	360	3/4"	10'-9"
T	78	1/2"	31'-0"

Reinforcing Steel: 6121
Concrete cu. Yds. 332.67

NOTE
Class A Concrete to be used throughout. Proportions 1:2 1/4:4.
All edges of exposed concrete to be beveled by use of 1/2 inch triangular moulding.
All reinforcing bars shall be either new billet steel or rail steel conforming to the requirements specified in Art. 474 of the County Specifications for Highways and Bridges. All bars must be obtained in full length and conform to the Bill of Material.
All reinforcing steel shall be thoroughly wired in position before concrete is placed.

Approved: *May 17 27*
P. S. [Signature]
ENGR. COUNTY DEPT. OF HIGHWAYS
DRAWN BY: [Signature]
CHECKED BY: [Signature]
Date 5-10-27 P.M.

The necessity of driving piles will be determined by the Engineer at the time the excavation for the footing is made. If piles are deemed necessary, the Engineer will furnish detailed plans showing spacing and number required.

GENERAL ELEVATION & DETAIL OF PIER
SEC. 1289-150