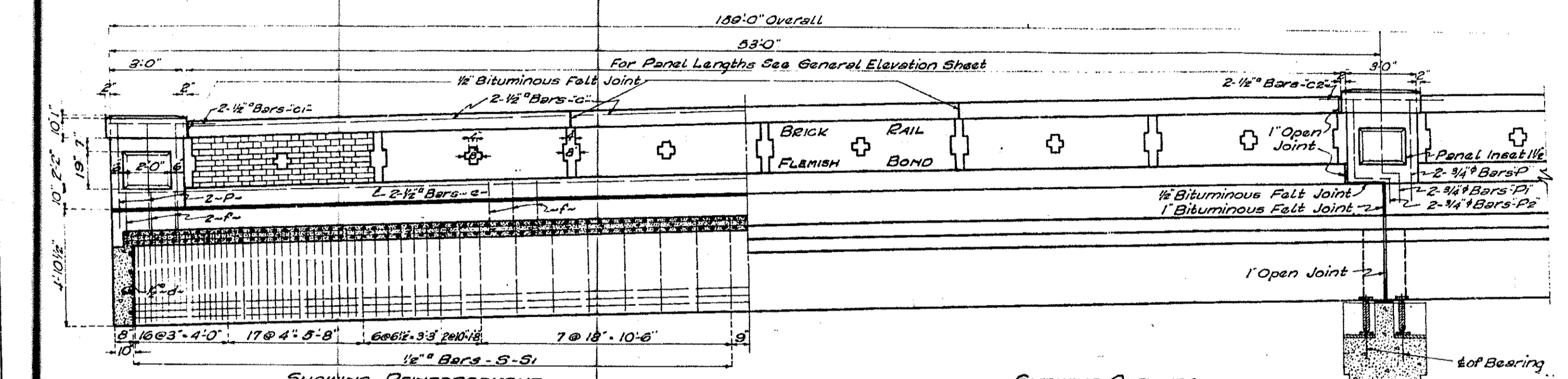


DEPARTMENT OF HIGHWAYS  
COOK COUNTY

State Aid	Fiscal Year	Sheet No.	Total
5	19	4	9

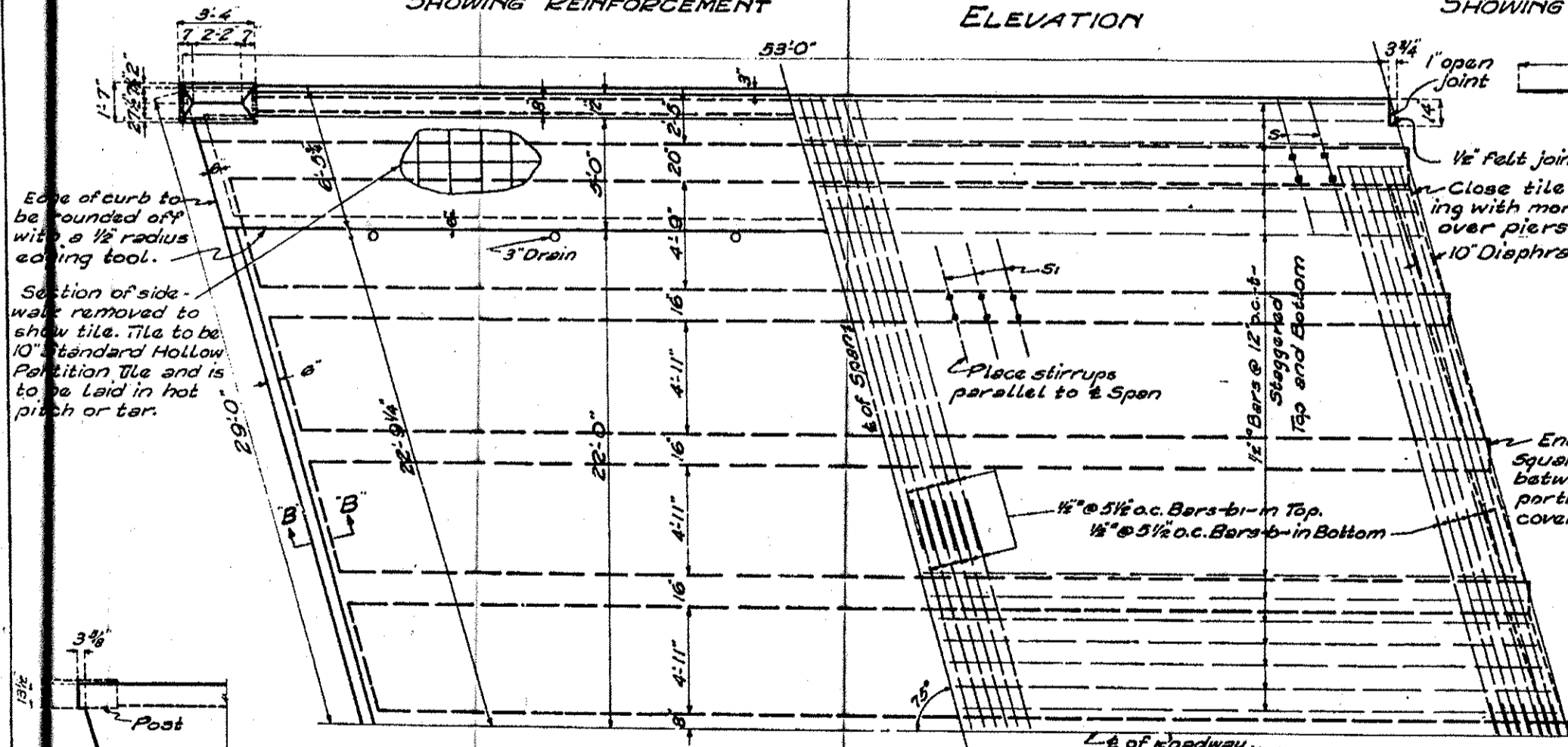
SECTION 1289-50



SHOWING REINFORCEMENT

ELEVATION

SHOWING OUTLINES

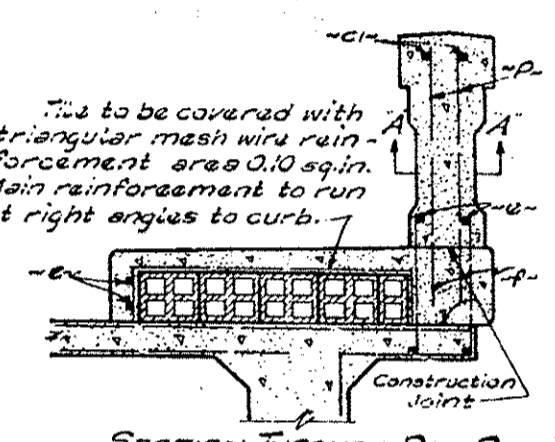


SHOWING OUTLINES

PLAN

SHOWING REINFORCEMENT

This to be covered with triangular mesh wire reinforcement area 0.10 sq.in. Main reinforcement to run at right angles to curb.



SECTION AA

For 3 Spans

**BILL OF MATERIAL**

Bar	No.	Size	Length
a	32	1 1/4"	52'-8"
b	672	1/2"	27'-0"
c	1008	1/2"	21'-0"
d	36	1/2"	15'-6"
e	8	1/2"	5'-0"
f	8	1/2"	7'-6"
g	48	1/2"	27'-0"
h	48	1/2"	27'-0"
i	330	1/2"	3'-3"
j	2088	1/2"	12'-0"
k	588	1/2"	11'-9"
l	336	1/2"	27'-6"
m	32	3/4"	5'-6"
n	8	3/4"	6'-3"
o	8	3/4"	6'-9"

Total Wt. Steel Lbs. 417645  
27 Cast Iron Rockers Lbs. 3668  
54 Steel Plates Lbs. 24887  
Total Vol. Concrete Cuts. 512.6  
Brick Cu. Yds. 14.8  
10 Std. Partition Tile Sq. Ft. 1422  
0.3" Wire Mesh Sq. Ft. 2067  
4 Wearing Surface Sq. Ft. 6952

SECTION THROUGH RAIL POST

SECTION BB

Notch at both ends of bridge to receive pavement and to extend full width of roadway.

**NOTE**

Class A Concrete to be used throughout. Proportions 1-2-4.  
All edges of exposed concrete to be finished by use of 1/4 inch triangular mauling.  
All reinforcing bars shall be either new galvanized steel or rail steel conforming to the requirements specified in Art. 474 of the County Specifications for Highways and Bridges. All bars must be obtained in full lengths indicated in this Material.  
Reinforcing steel shall be securely fastened in position before concrete is placed.

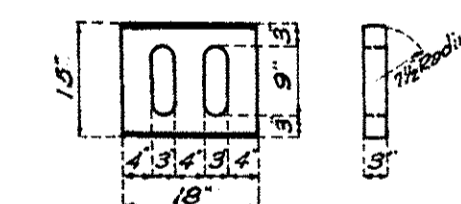
In rail posts, the projecting portion of bars shall be permitted to slide freely in the adjacent rail section. A 1/4 inch slip sleeve with cap shall be provided two inches longer than the projecting portion of the bar.  
Before any work for the construction of this work is started by the Contractor, he shall submit to the Engineer for approval a detail sketch of the falsework intended to be used for supporting the superstructure.

Edge of curb to be rounded off with a 1/2 radius coping tool.  
Section of sidewalk removed to show tile. Tile to be 10" standard Hollow Partition Tile and is to be laid in hot pitch or tar.

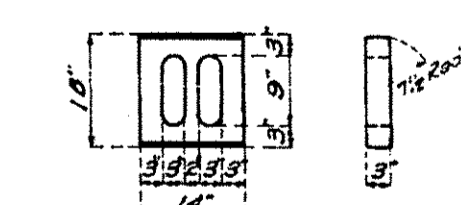
DETAIL OF PROJECTION N.W. & S.E. Corners of Each Span.

STIRRUP-S- For Outside Girders 1/2" 11'9" lg. 558 Req'd.

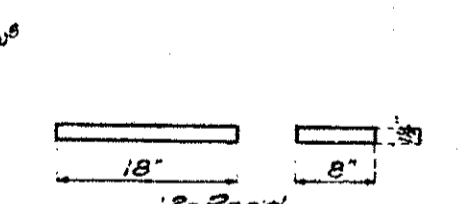
STIRRUP-S1- For Inside Girders 1/2" 12'0" lg. 2088 Req'd.



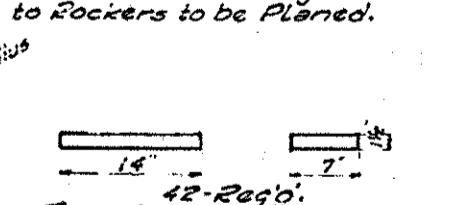
FOR OUTSIDE GIRDERS 6-Req'd.



FOR INSIDE GIRDERS 21-Req'd.



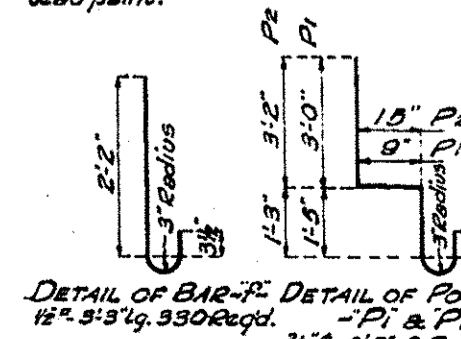
FOR OUTSIDE GIRDERS 12-Req'd.



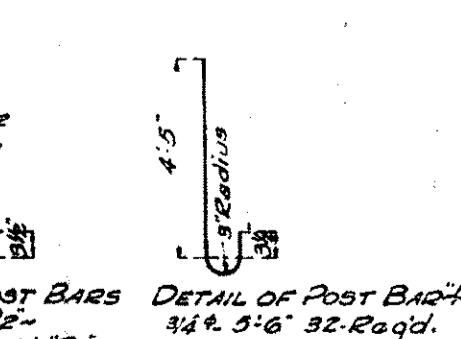
FOR INSIDE GIRDERS 42-Req'd.

Rockers and Plates shall be given two coats of sublimed blue lead paint.

All Plates to be rolled stock of the required thickness.

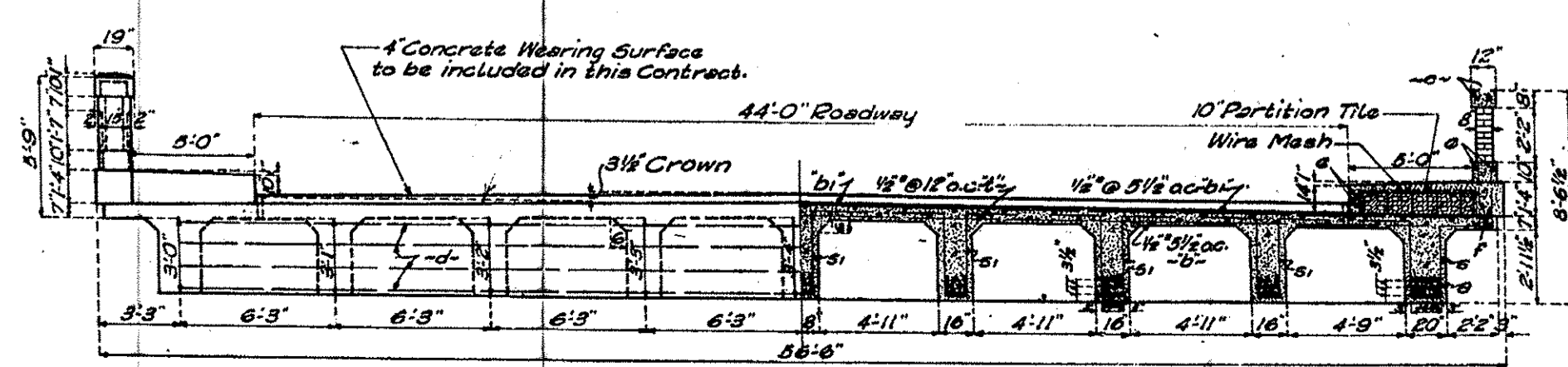


DETAIL OF BAR-P1 12" 5'3" lg. 330 Req'd.



DETAIL OF POST BAR-P2 3/4" 6'3" lg. 8 Req'd.

DETAILS OF SUPERSTRUCTURE  
RAMP BRIDGE  
OVER  
DESPLAINES RIVER  
SECTION 1289-50



HALF ELEVATION

HALF CROSS SECTION

APPROVED: [Signature]  
DATE: May 17, 1917