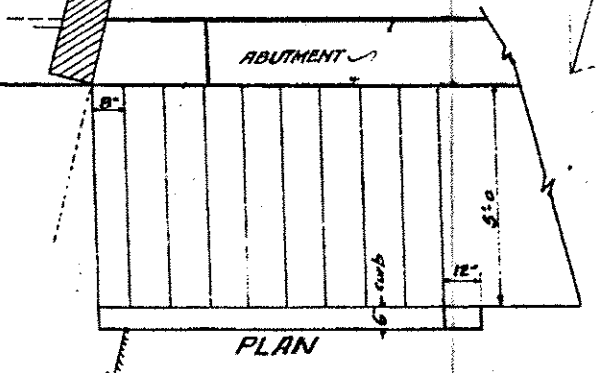
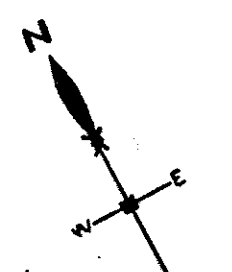
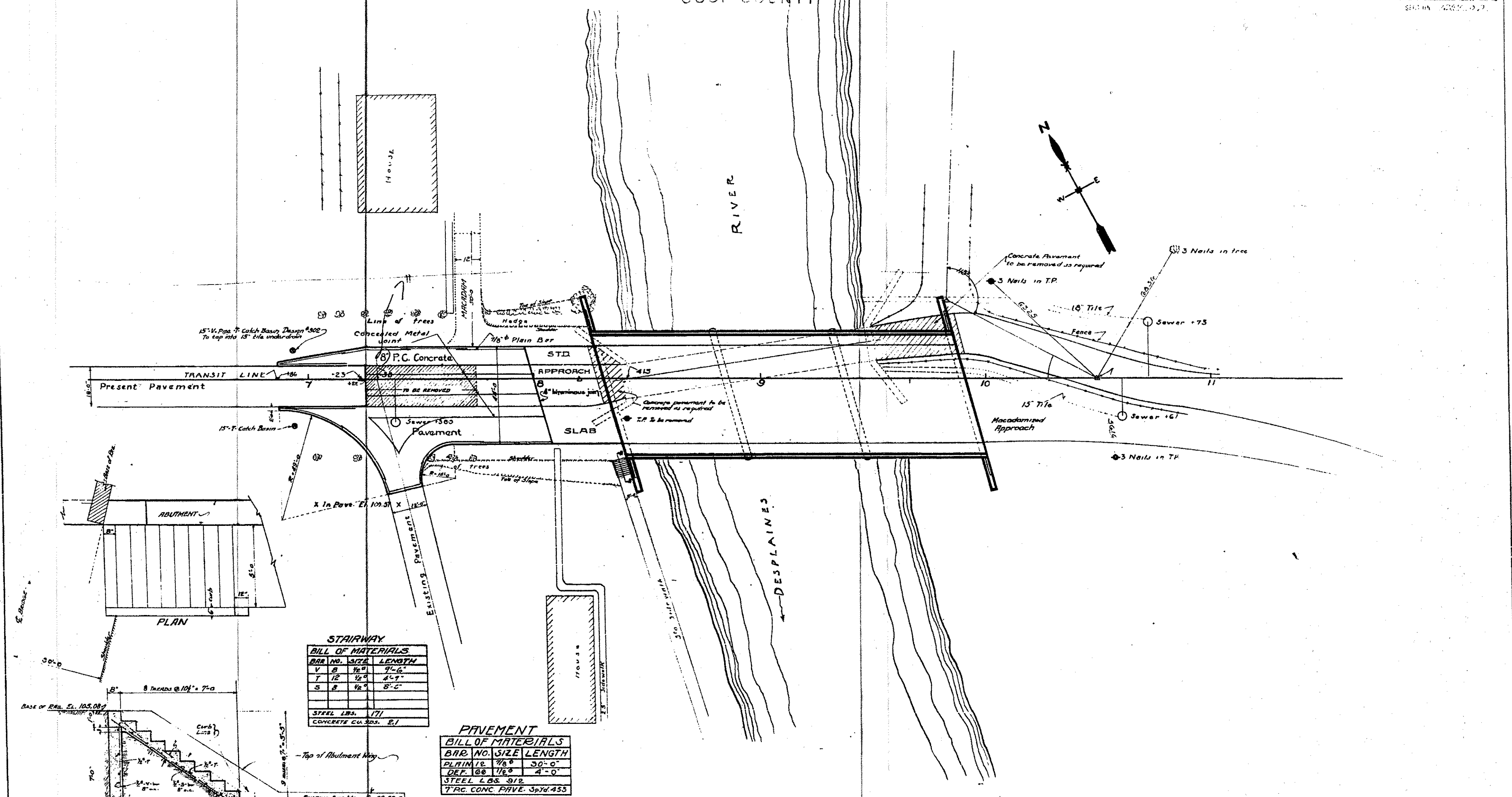


DEPARTMENT OF HIGHWAYS  
COOK COUNTY

SECTION 1289-50

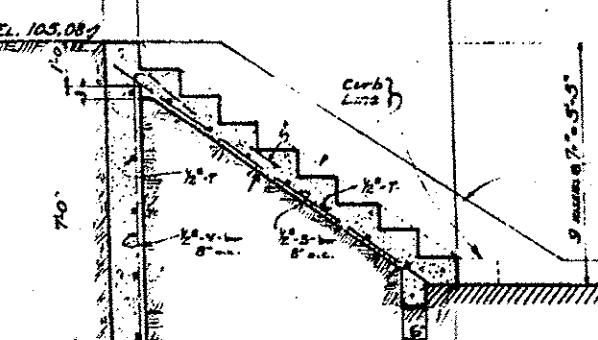


**STAIRWAY**

BAR NO.	SIZE	LENGTH
V	1/2"	9'-6"
T	1/2"	4'-9"
S	1/2"	8'-0"
STEEL LBS.		171
CONCRETE CU. YDS.		2.1

**PAVEMENT**

BAR NO.	SIZE	LENGTH
PLAIN 12	1/8"	30'-0"
DEF. 108	1/8"	4'-0"
STEEL LBS. 312		
7" RC CONC. PAVE. Sp'd 453		



APPROVED: *[Signature]*  
 1927  
 ASST. COUNTY SUPV. OF HIGHWAYS  
 COMPUTED BY *[Signature]*  
 DRAWN BY *[Signature]*  
 CHECKED BY *[Signature]*

LOCATION PLAN  
 RAND BRIDGE  
 OVER  
 DESPLAINES RIVER  
 Sec. 1289-50