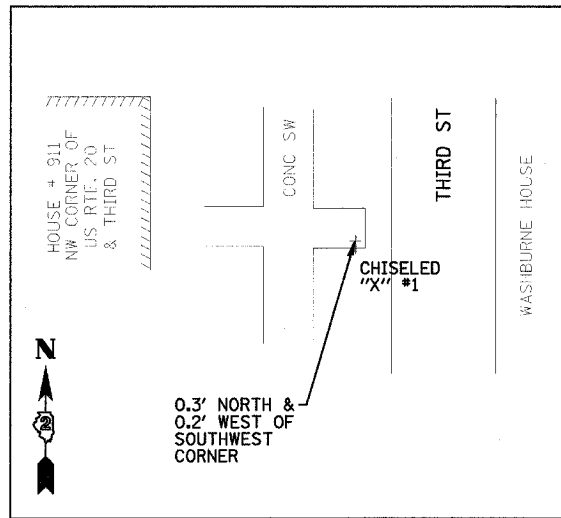
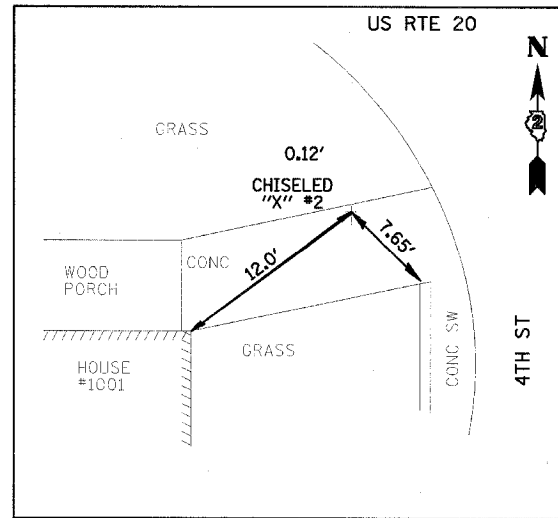


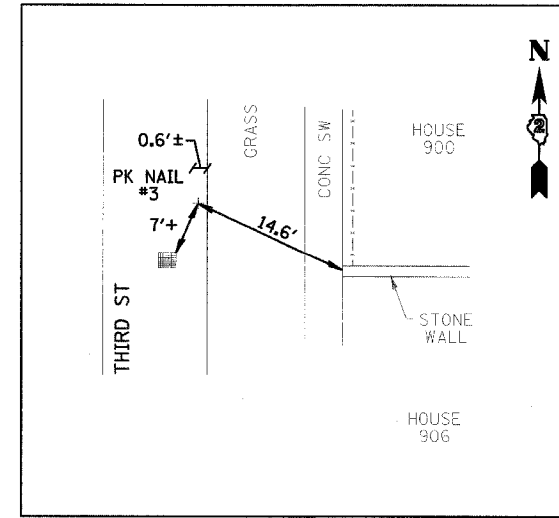
F.A. RTE.	SECTION	COUNTY	TOTAL SHEETS	SHEET NO.
		JO DAVIESS	39	8
STA.	TO STA.			
FED. ROAD DIST. NO.	ILLINOIS FED. AID PROJECT			



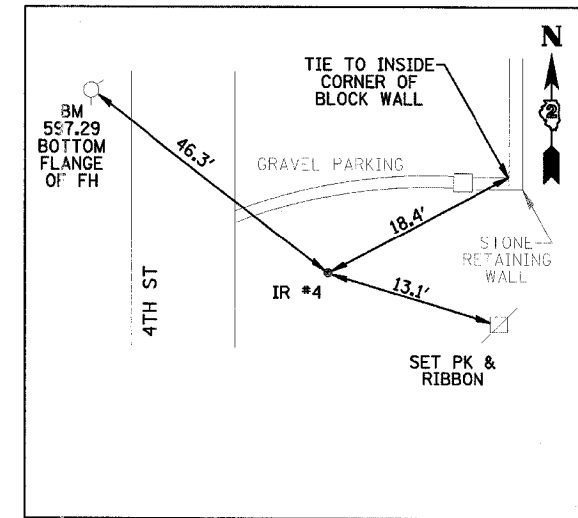
CONTROL TIE #1
(CHISELED "X")



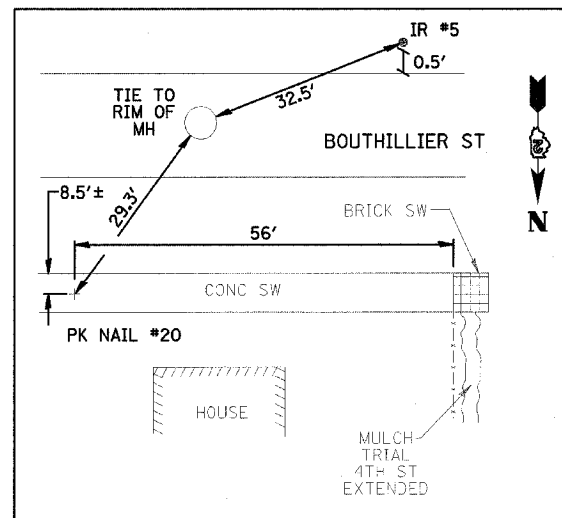
CONTROL TIE #2
(CHISELED "X")
NEAR THE SW CORNER
OF RTE 20 & 4TH ST



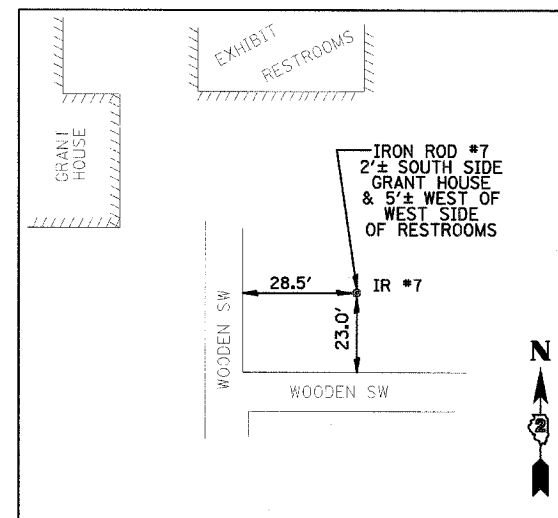
CONTROL TIE #3
(PK NAIL)



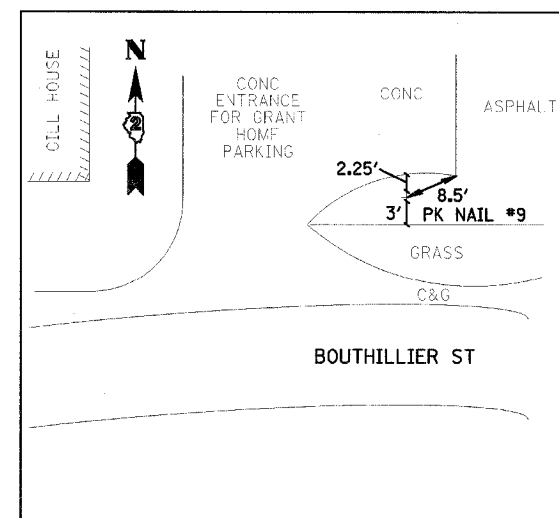
CONTROL TIE #4
(IRON ROD)



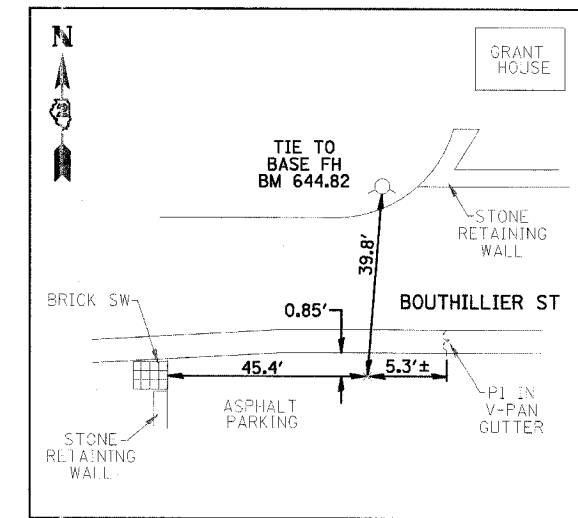
CONTROL TIE #5
(IRON ROD)
CONTROL TIE #20
(PK NAIL)



CONTROL TIE #7
(IRON ROD)



CONTROL TIE #9
(PK NAIL)



CONTROL TIE #25
(PK NAIL)

BENCHMARKS:

- STATE BM EX "□" #410;
ON FLASHING ROAD
SIGN, NORTH SIDE US RTE 20,
OPPOSITE GRANT HOME,
WEST OF STILLMAN INN
ELEV: 637.65

-TOP OF FIRE HYDRANT
NORTH SIDE BOUTHILLIER ST
@ CORNER OF RETAINING
WALL NEAR SOUTHWEST
CORNER OF GRANT HOME
ELEV: 644.82

-TOP OF FIRE HYDRANT
S SIDE BOUTHILLIER ST
130' + EAST OF GILL HOUSE
15' WEST OF ENTRANCE TO
BERNADINE'S STILLMAN INN
ELEV: 681.27

- TOP OF FIRE HYDRANT
NORTHEAST CORNER US RTE 20
(DECATUR ST) & THIRD ST
ELEV: 589.88

- PK NAIL #8:
0.05' NORTH BY (BRICK SIDEWALK)
SOUTH SIDE BOUTHILLIER ST
BETWEEN NOLAN HOUSE
& GILL HOUSE
ELEV: 666.20

-FIRE HYDRANT
NORTHEAST BOLT (PAINTED WHITE)
OF FH @ NORTHWEST CORNER OF
R&L GAS MART, SOUTH SIDE US ROUTE 20,
JUST EAST OF BOUTHILLIER ST
ELEV: 728.23

- TOP OF FIRE HYDRANT;
WEST SIDE, NORTH END OF EX.
4TH ST, NORTH OF US RTE 20
NORTH OF IHPA OFFICE
ELEV: 597.29

- PK NAIL #9
SOUTHWEST CORNER + GRANT HOME
PARKING (EAST SIDE GILL HOUSE)
ELEV: 672.95

LAYOUT COORDINATE SCHEDULE

CONTROL POINT	NORTHING	EASTING	DESCRIPTION
1	10000.000	10000.000	CHISELED "X" IN CONCRETE
2	9903.631	10344.142	CHISELED "X" IN CONCRETE
3	10155.084	10048.561	PK NAIL
4	10114.069	10387.641	IRON ROD
5	10501.516	10394.644	IRON ROD
7	10370.352	10900.033	IRON ROD
9	10244.758	11075.706	PK NAIL
20	10469.761	10344.799	PK NAIL
25	10371.441	10703.639	PK NAIL

REVISIONS	
NAME	DATE

ILLINOIS DEPARTMENT OF TRANSPORTATION

IDOT / IHPA
GALENA STATE HOME HISTORIC SITES
CONTROL TIES & BENCHMARKS

SCALE: VERT.
HORIZ.
DATE: 12/18/06

DRAWN BY: JJ
CHECKED BY: PJM