

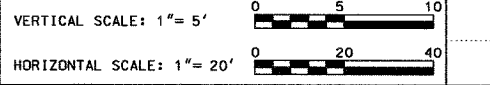
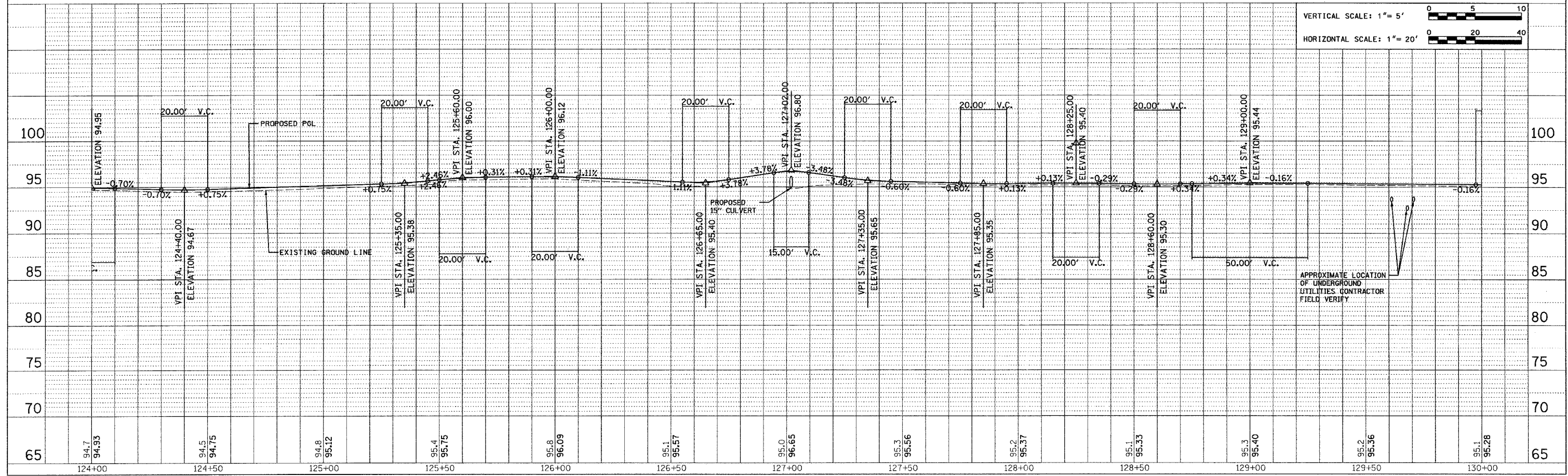
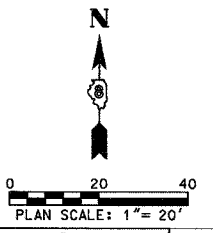
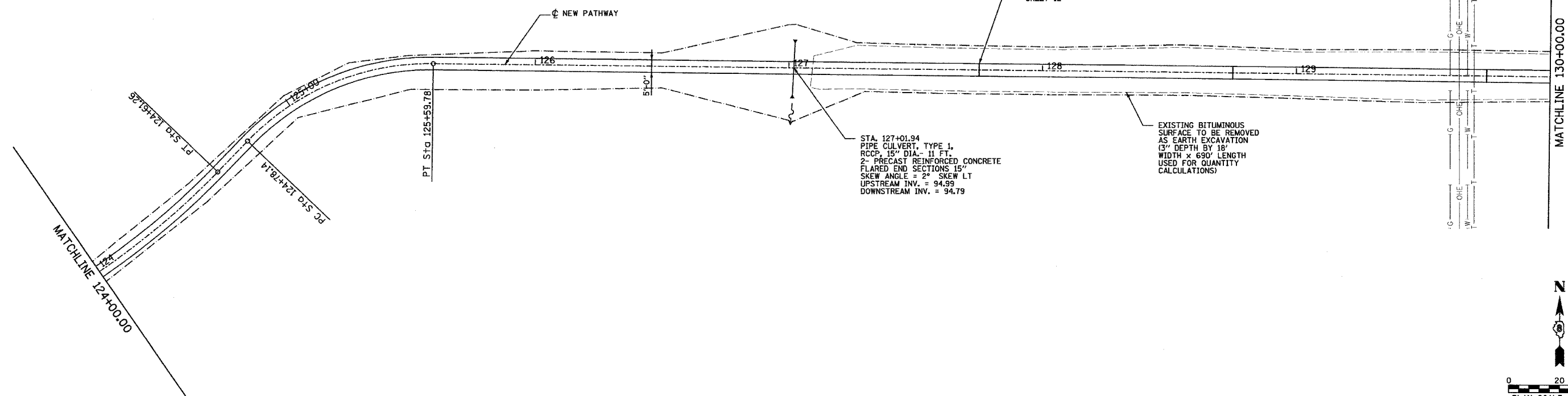
P.I. Station 125+21.39  
 Delta = 46° 46' 32" (RT)  
 Radius = 100'  
 Tangent = 43.25'  
 Length = 81.64'  
 External = 8.95'  
 Long Chord = 79.39'  
 P.C. Station 124+78.14  
 P.T. Station 125+59.78  
 Back = N 43° 54' 54" E  
 Ahead = S 89° 18' 34" E

F.A. RTE.	SECTION	COUNTY	TOTAL SHEETS	SHEET NO.
		ST. CLAIR	18	10
STA. 124+00		TO STA. 130+00		
FED. ROAD DIST. NO.		ILLINOIS FED. AID PROJECT		

CONTRACT NO. 44966

PLAN	DATE
REVISIONS	
NOTED	
ALIGNED	
CHECKED	
DATE	
BY	

PROFILE	DATE
REVISIONS	
NOTED	
GRADES	
CHECKED	
DATE	
BY	



APPROXIMATE LOCATION OF UNDERGROUND UTILITIES CONTRACTOR FIELD VERIFY