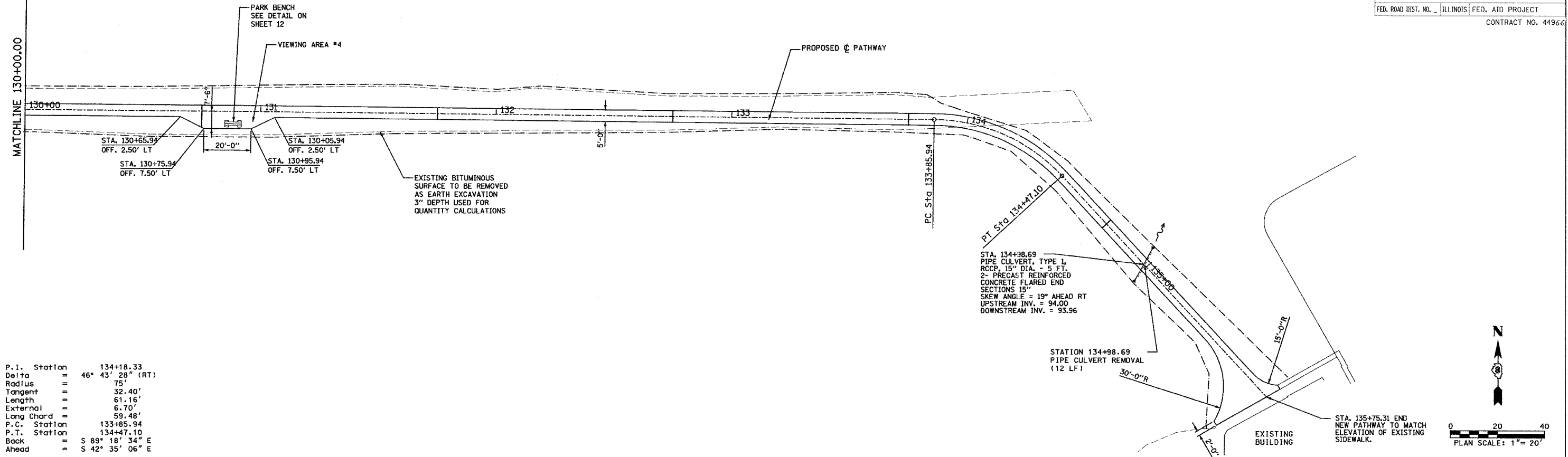


F.A. RTE.	SECTION	COUNTY	TOTAL SHEETS	SHEET NO.
		ST. CLAIR	18	11
STA. 130+00		TO STA. 135+75.31		
FED. ROAD DIST. NO. 1		ILLINOIS FED. AID PROJECT		
CONTRACT NO. 44966				

DATE	BY



P.I. Station	134+18.33
Delta	46° 43' 28" (RT)
Radius	75'
Tangent	32.40'
Length	61.16'
External	6.70'
Long Chord	59.48'
P.C. Station	133+85.94
P.T. Station	134+47.10
Back	S 89° 18' 34" E
Ahead	S 42° 35' 06" E

DATE	BY

