

F.A. RTE.	SECTION	COUNTY	TOTAL SHEETS	SHEET NO.
		ST. CLAIR	18	1

CONTRACT NO. 44966

STATE OF ILLINOIS
DEPARTMENT OF TRANSPORTATION
DIVISION OF HIGHWAYS

IDNR /IHPA STATEWIDE
CAHOKIA MOUNDS STATE HISTORIC SITE

PARK ROADS
SIDEWALK IMPROVEMENTS
ST. CLAIR COUNTY
JOB NO. P-30-009-04
C-30-009-07

INDEX OF SHEETS

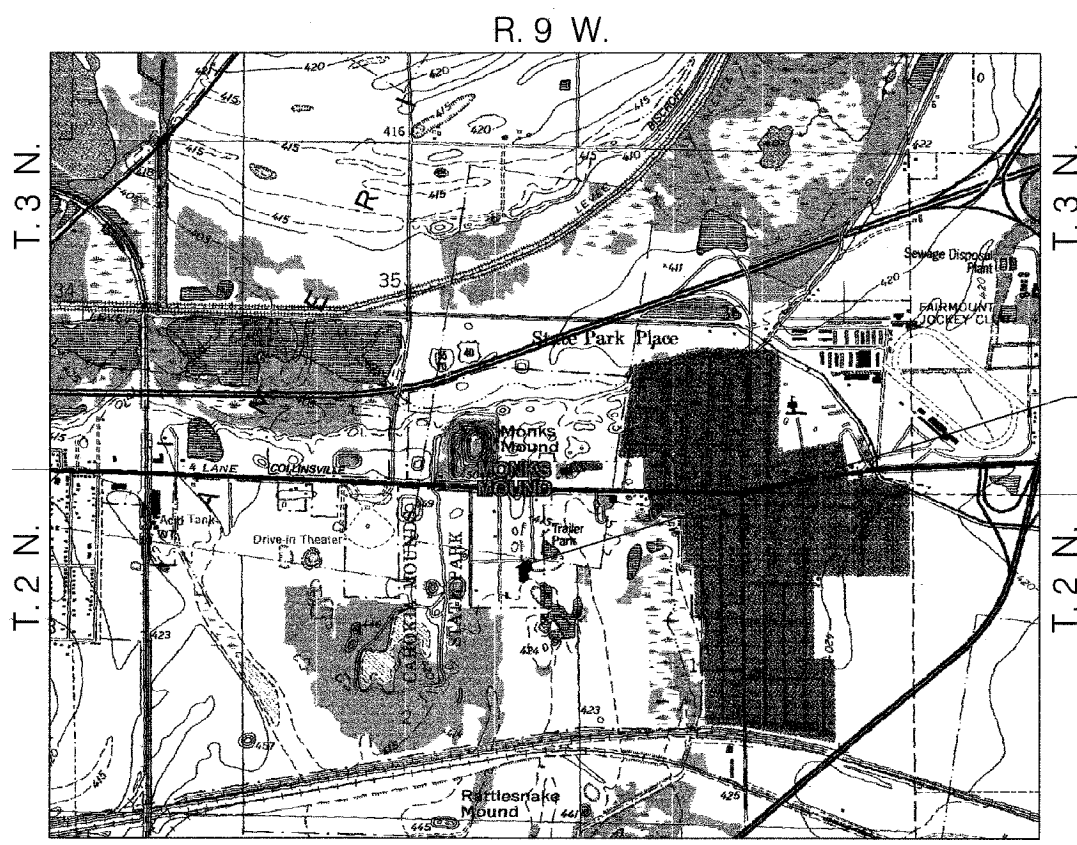
1. COVER SHEET
2. SUMMARY OF QUANTITIES AND GENERAL NOTES
3. SCHEDULES
4. TYPICAL SECTIONS
5. LOCATION MAP w/ SURVEY CONTROL TIE POINT
- 6-11. PLAN AND PROFILE SHEETS
12. DETAILS
- 13-18. SIGN GRAPHICS

STATE STANDARDS

- 424001 - 04
- 542301 - 01
- 702001 - 06



LOCATION OF SECTION INDICATED THUS: - [black rectangle]



CAHOKIA MOUNDS STATE HISTORIC SITE
30 RAMEY STREET,
COLLINSVILLE, IL. 62234

STATE OF ILLINOIS
DEPARTMENT OF TRANSPORTATION
DIVISION OF HIGHWAYS

SUBMITTED May 2, 2007
Eric S. Harsh
DEPUTY DIRECTOR OF HIGHWAYS

May 11, 2007
Eric C. Harsh
INTERIM ENGINEER OF DESIGN AND ENVIRONMENT

May 11, 2007
Melton R. Sees, P.E.
DIRECTOR OF HIGHWAYS, CHIEF ENGINEER



Guy W. Whitlow 2/26/07
Date
Guy W. Whitlow, McDonough-Whitlow, P.C.
Licensed Professional Engineer
State of Illinois No. 062-054106
License Expires 11/30/07

DISTRICT PROJECT ENGINEER - LANCE KIDD



FULL SIZE PLANS HAVE BEEN PREPARED USING STANDARD ENGINEERING SCALES. REDUCED SIZED PLANS WILL NOT CONFORM TO STANDARD SCALES. IN MAKING MEASUREMENTS ON REDUCED PLANS, THE ABOVE SCALES MAY BE USED.

J.U.L.I.E.
JOINT UTILITY LOCATION INFORMATION FOR EXCAVATION
CALL 1-800-892-0123

CONTRACT NO. 44966

LOCATION MAP

GROSS LENGTH = 3,575.31' = 0.68 MILES
NET LENGTH = 3,575.31' = 0.68 MILES



1" = 1400'

McDonough-Whitlow, P.C.
Consulting Engineers & Land Surveyors
138 East Wood Street
Hillsboro, IL 62049
Phone: 217.532.9233
Fax: 217.532.6300
PROFESSIONAL DESIGN NO. 164-002754

PRINTED BY THE AUTHORITY
OF THE STATE OF ILLINOIS

100% STATE

SUMMARY OF QUANTITIES			
Pay Item Code No.	Item Description	Unit	Quantity
20200100	EARTH EXCAVATION	CU YD	100
20400800	FURNISHED EXCAVATION	CU YD	58
* 21101600	TOPSOIL FURNISH AND PLACE, VARIABLE DEPTH	SQ YD	3,734
25000100	SEEDING, CLASS 1	ACRE	1.00
25000400	NITROGEN FERTILIZER NUTRIENT	POUND	90
25000500	PHOSPHORUS FERTILIZER NUTRIENT	POUND	90
25000600	POTASSIUM FERTILIZER NUTRIENT	POUND	90
25100105	MULCH, METHOD 1	ACRE	1.00
35100200	AGGREGATE BASE COURSE, TYPE A	CU YD	14
* 42400420	PORTLAND CEMENT CONCRETE SIDEWALK, 4 INCH, SPECIAL	SQ FT	15,344
* 42400440	PORTLAND CEMENT CONCRETE SIDEWALK, 6 INCH, SPECIAL	SQ FT	6,867
42400800	DETECTABLE WARNINGS	SQ FT	20
* 50105220	PIPE CULVERT REMOVAL	FOOT	94
54200427	PIPE CULVERTS, TYPE 1, RCCP, 12"	FOOT	15
54200430	PIPE CULVERTS, TYPE 1, RCCP, 15"	FOOT	65
54213657	PRECAST REINFORCED CONCRETE FLARED END SECTIONS 12"	EACH	2
54213660	PRECAST REINFORCED CONCRETE FLARED END SECTIONS 15"	EACH	12
67100100	MOBILIZATION	LSUM	1
70103700	TRAFFIC CONTROL COMPLETE	LSUM	1
* 72000105	SIGN PANEL - TYPE 1 (SPECIAL)	SQ FT	144
* X0321158	PARK BENCHES	EACH	3
Z0013798	CONSTRUCTION LAYOUT	LSUM	1

* SPECIAL PROVISION
 ■ SPECIALTY ITEMS

GENERAL NOTES

- THE ILLINOIS DEPARTMENT OF TRANSPORTATION (IDOT) HIGHWAY STANDARDS WITH THE REVISION NUMBER LISTED ON THE COVER SHEET OF THE PLANS SHALL APPLY TO THIS PROJECT.
- UNDERGROUND FACILITIES, STRUCTURES AND UTILITIES HAVE BEEN PLOTTED FROM AVAILABLE SURVEYS AND RECORDS. THEIR LOCATIONS MUST BE CONSIDERED TO BE APPROXIMATE ONLY. IT IS POSSIBLE THERE MAY BE OTHERS, THE EXISTENCE OF WHICH IS NOT PRESENTLY KNOWN OR SHOWN. IT IS THE CONTRACTOR'S RESPONSIBILITY TO DETERMINE THEIR EXISTENCE AND EXACT LOCATION AND TO AVOID DAMAGE THERETO. ILLINOIS LAW REQUIRES A MINIMUM 48-HOUR NOTICE TO ALL UTILITY COMPANIES BEFORE DIGGING. FIELD LOCATIONS OF UNDERGROUND FACILITIES MAY BE OBTAINED BY CALLING THE J.U.L.I.E. SYSTEM AT 800-892-0123 AND PROVIDING 48 HOURS ADVANCE NOTICE. NON-J.U.L.I.E. MEMBERS MAY BE CONTACTED DIRECT. AGENCIES KNOWN TO HAVE FACILITIES WITHIN THE PROJECT LIMITS ARE LISTED BELOW.
- THE CONTRACTOR SHALL PROTECT AND CAREFULLY PRESERVE ALL PROPERTY MARKERS AND MONUMENTS UNTIL THE OWNER AND AN AUTHORIZED SURVEYOR, OR AGENT, HAS WITNESSED OR OTHERWISE REFERENCED THEIR LOCATION.
- THE CONTRACTOR SHALL VERIFY ALL DIMENSIONS AND CONDITIONS IN THE FIELD PRIOR TO ORDERING MATERIALS AND COMMENCING CONSTRUCTION.
- TRENCH BACKFILL IS CONSIDERED INCIDENTAL TO PIPE CULVERT & PIPE CULVERT REMOVAL AND WILL NOT BE PAID FOR AS A SEPARATE ITEM.

UTILITIES:

NAME OF UTILITY	TYPE
AMEREN UE	GAS
AT&T	TELEPHONE
CITY OF COLLINSVILLE	WATER
AMEREN UE	ELECTRIC

THE FOLLOWING ABBREVIATIONS SUPPLEMENT OR SUPERCEDE HIGHWAY STANDARD 000001:

AD	ALGEBRAIC DIFFERENCE IN GRADE	NIF	NOW OR FORMERLY
BVCE	BEGINNING OF VERTICAL CURVE ELEVATION	O/C	OIL AND CHIP
BVCS	BEGINNING OF VERTICAL CURVE STATION	PROP	PROPOSED
CONST	CONSTRUCTION	PVC	POLYVINYL CHLORIDE PIPE
CP	CONTROL POINT	TYP	TYPICAL
ELEV	ELEVATION	W	WIDTH
K	LENGTH OF VERTICAL CURVE PER PERCENT GRADE DIFFERENCE		

- SEEDING MIX SHALL BE LAWN MIXTURE IS ACCORDANCE WITH SECTION 250 OF THE IDOT SSRBC, JAN. 1, 2007
- NO EXCAVATION (OTHER THAN SOD/TOPSOIL REMOVAL UNDER PATHWAY), UNLESS NOTED OTHERWISE, WILL BE ALLOWED ON THE PROJECT SITE.

COMMITMENTS

MICROSTATION FILES OF THIS PROJECT WILL BE MADE AVAILABLE TO THE CONTRACTOR, IF THERE IS A CONFLICT BETWEEN THE ELECTRONIC FILES AND THE PRINTED CONTRACT PLANS AND DOCUMENTS. THE PRINTED CONTRACT PLANS AND DOCUMENTS SHALL TAKE PRECEDENCE OVER THE ELECTRONIC FILES. THE CONTRACTOR SHALL ACCEPT ALL RISK ASSOCIATED WITH USING THE ELECTRONIC FILES AND SHALL HOLD THE DEPARTMENT HARMLESS FOR ANY ERRORS OR OMISSIONS IN THE ELECTRONIC FILES AND THE DATA CONTAINED THEREIN. ERRORS OR DELAYS RESULTING FROM THE USE OF THE ELECTRONIC FILES BY THE CONTRACTOR SHALL NOT RESULT IN AN EXTENSION OF TIME FOR ANY INTERIM OR FINAL COMPLETION DATE OR SHALL NOT BE CONSIDERED CAUSE FOR ADDITIONAL COMPENSATION. THE CONTRACTOR SHALL NOT USE, SHARE, OR DISTRIBUTE THESE ELECTRONIC FILES EXCEPT FOR THE PURPOSE OF CONSTRUCTION OF THIS CONTRACT. ANY CLAIMS BY THIRD PARTIES DUE TO USE OR ERRORS SHALL BE THE SOLE RESPONSIBILITY OF THE CONTRACTOR. THE CONTRACTOR SHALL INCLUDE THIS DISCLAIMER WITH THE TRANSFER OF THESE ELECTRONIC FILES TO ANY OTHER PARTIES AND SHALL INCLUDE APPROPRIATE LANGUAGE BINDING THEM TO SIMILAR RESPONSIBILITIES.

THE ASSISTANT SITE MANAGER, MATTHEW MIGALLA, SHOULD BE CONTACTED BEFORE BEGINNING CONSTRUCTION. HIS PHONE NUMBER IS 618.346.5160.

C.E.R.P. REQUIREMENTS - SEE SPECIAL PROVISIONS

APPLICATION RATES	
NITROGEN FERTILIZER NUTRIENT	90 LB/ACRE
PHOSPHORUS FERTILIZER NUTRIENT	90 LB/ACRE
POTASSIUM FERTILIZER NUTRIENT	90 LB/ACRE
MULCH METHOD 1	2 TONS/ACRE

SOIL CALCULATION	
TOPSOIL	3734 SQ. YDS. x 2" AVG DEPTH = 216 CU. YD.

REVISIONS	
NAME	DATE

ILLINOIS DEPARTMENT OF TRANSPORTATION
 SUMMARY OF QUANTITIES
 AND GENERAL NOTES

IDNR / IHPA STATEWIDE
 SIDEWALK IMPROVEMENTS
 CAHOKIA MOUNDS STATE
 HISTORIC SITE

SCALE: NTS
 DATE: 2-26-07

DRAWN BY: EJR
 CHECKED BY: GWW

F.A. RTE.	SECTION	COUNTY	TOTAL SHEETS	SHEET NO.
		ST. CLAIR	18	3
STA.		TO STA.		
FED. ROAD DIST. NO.		ILLINOIS	FED. AID PROJECT	

SIGN SCHEDULE

SIGN TAG	LOCATION	SQ. FT.	MESSAGE	* POST	SIGN DETAIL
#1	SEE SHEET 5	24	SEE SHEET 13	2	SEE SHEET 12
#2	SEE SHEET 5	24	SEE SHEET 14	2	SEE SHEET 12
#3	SEE SHEET 5	24	SEE SHEET 15	2	SEE SHEET 12
#4	SEE SHEET 5	24	SEE SHEET 16	2	SEE SHEET 12
#5	SEE SHEET 5	24	SEE SHEET 17	2	SEE SHEET 12
#6	SEE SHEET 5	24	SEE SHEET 18	2	SEE SHEET 12
TOTALS:		144		12*	

* INCLUDED IN COST OF SIGN PANEL

AGGREGATE SCHEDULE

STATION	STATION	AGGREGATE BASE COURSE, TYPE A (CU YD)
100+00	100+25	1
134+05.94	135+75.31	13
TOTAL		14

EARTHWORK SCHEDULE

STATION	STATION	EARTH EXCAVATION 20200100 (CU YD)	FUNISHED EXCAVATION 20400800 (CU YD)	TOPSOIL FINISH & PLACE VARIABLE DEPTH (SQ. YD.) 21101600 (SQ. YD)
100+00	135+75.31	100	58	3734
TOTAL		100	58	3734

CULVERT SCHEDULE

STATION	PIPE CULVERT RCCP TYPE 1		P.R.C FLARED END SECTION		PIPE CULVERT REMOVAL (FOOT)
	12" (FOOT)	15" (FOOT)	12" (EACH)	15" (EACH)	
100+13.95		9		2	13
101+06.89		12		2	20
101+52.54		17		2	21
104+07.16		11		2	16
106+58.86	15		2		12
127+01.94		11		2	
134+98.69		5		2	12
TOTAL	15	65	2	12	94

SEEDING SCHEDULE

STATION	STATION	SEEDING CL 1 (ACRE)	NITROGEN FERT NUTR (POUND)	PHOSPHORUS FERT NUTR (POUND)	POTASSIUM FERT NUTR (POUND)	MULCH METH 1 (ACRE)
100+00	135+75.31	1.0	90	90	90	1.0
TOTAL		1.0	90	90	90	1.0

PARK BENCH SCHEDULE

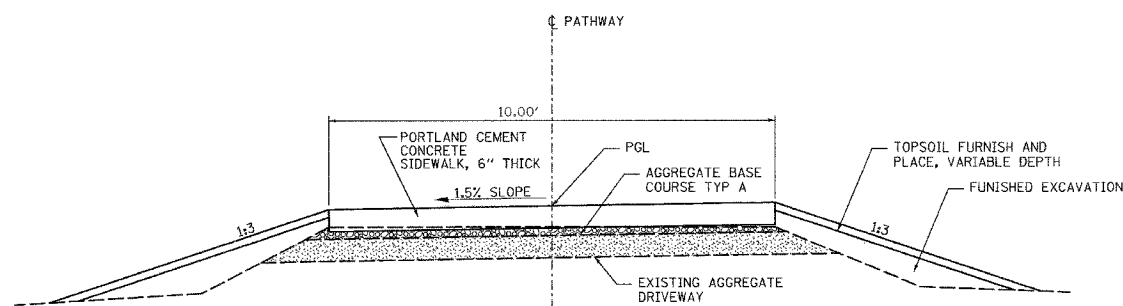
LOCATION	NUMBER
115+40	1
122+34	1
130+86	1
TOTAL	3

DISTRICT PROJECT ENGINEER - LANCE KIDD

REVISIONS		ILLINOIS DEPARTMENT OF TRANSPORTATION SCHEDULES IDOT / IHPA JARROT MANSION STATE HISTORIC SITE
NAME	DATE	
SCALE: NTS		DRAWN BY: EJR
DATE: 2-26-07		CHECKED BY: GWW

...081101014-0816 SCHEDULES.dgn 2/27/2007 2:07:50 AM User *

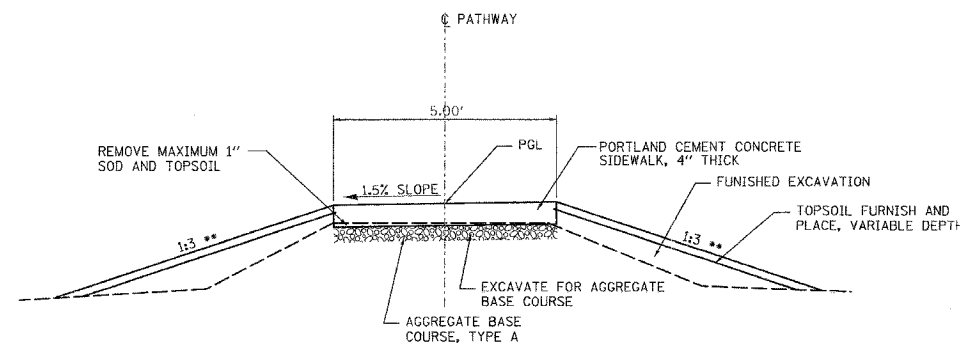
F.A. RTE.	SECTION	COUNTY	TOTAL SHEETS	SHEET NO.
		ST. CLAIR	18	4
STA. _____ TO STA. _____		FED. ROAD DIST. NO. ILLINOIS FED. AID PROJECT		
CONTRACT NO. 44966				



TYPICAL 10' PATHWAY SECTION

STA. 100+00 TO STA. 103+00

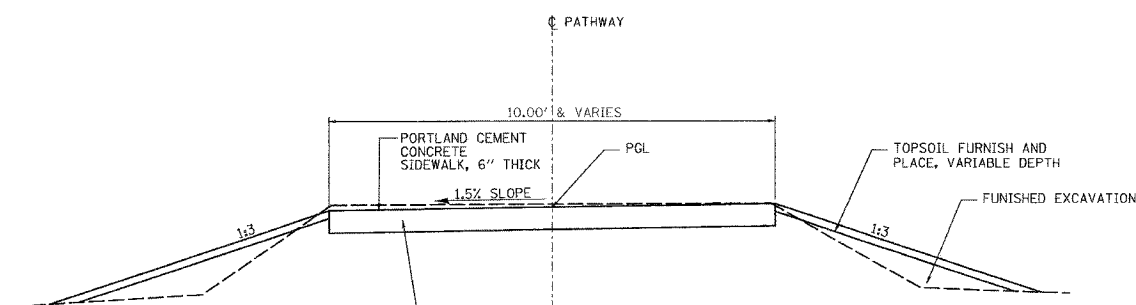
REMOVE EXISTING AGGREGATE SURFACE ADJACENT TO EXISTING PARKING LOT AT STA. 100+00 TO MATCH TOP SURFACE ELEVATION OF EXISTING PARKING LOT AND NEW PATHWAY



TYPICAL 5' PATHWAY SECTION

STA. 134+75 TO 135+25

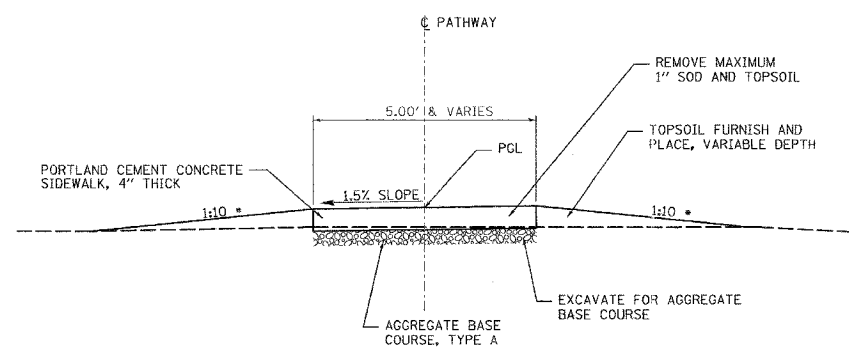
** TRANSITION TO 1:10 AT EACH END. ADJUST TRANSITION LENGTH TO PROVIDE UNIFORM SLOPE WIDTH



TYPICAL 10' PATHWAY SECTION

STA. 103+00 TO STA. 106+96.71

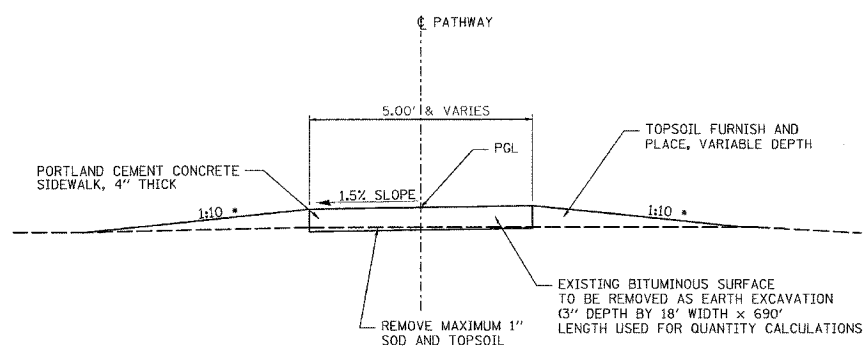
REMOVE EXISTING AGGREGATE SURFACE MATERIAL (EARTH EXCAVATION) 6\"/>



TYPICAL 5' PATHWAY SECTION

STA. 134+05.94 TO 134+75.00
STA. 135+25.00 TO 135+75.31

* EXTEND WIDTH OF TOPSOIL TO MATCH BITUMINOUS SURFACE REMOVAL WIDTH AT STA. 127+30 TO STA. 134+20



TYPICAL 5' PATHWAY SECTION

STA. 106+96.71 TO 134+05.94

* EXTEND WIDTH OF TOPSOIL TO MATCH BITUMINOUS SURFACE REMOVAL WIDTH AT STA. 127+30 TO STA. 134+20

NOTE:
NO EXCAVATION (OTHER THAN SOD/TOPSOIL REMOVAL UNDER PATHWAY), UNLESS NOTED OTHERWISE, WILL BE ALLOWED ON THE PROJECT SITE.

REVISIONS	
NAME	DATE

ILLINOIS DEPARTMENT OF TRANSPORTATION

TYPICAL SECTIONS

IDNR / IHPA STATEWIDE
SIDEWALK IMPROVEMENTS
CAHOKIA MOUNDS STATE
HISTORIC SITE

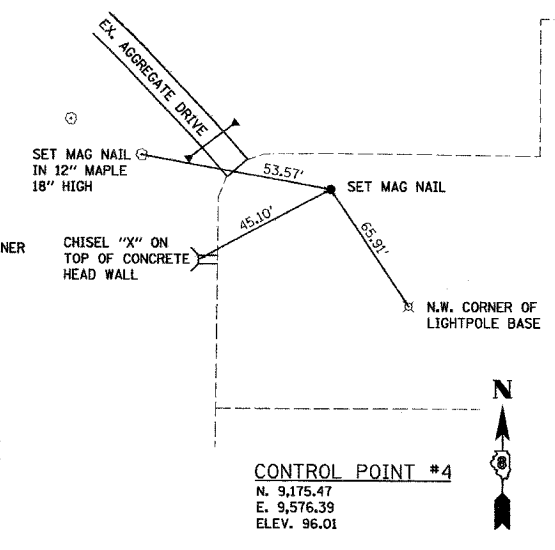
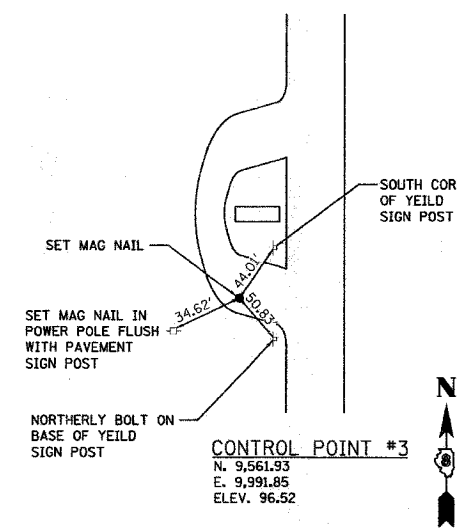
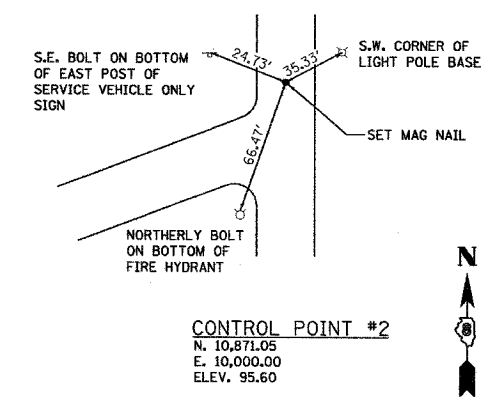
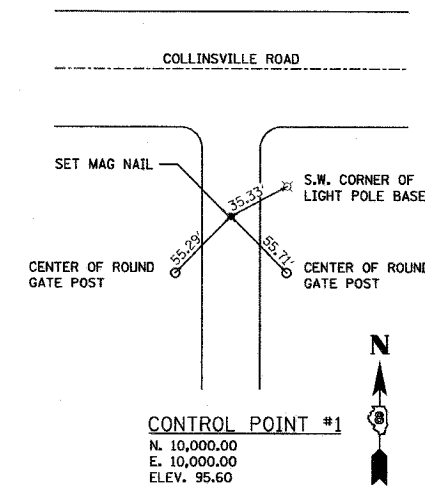
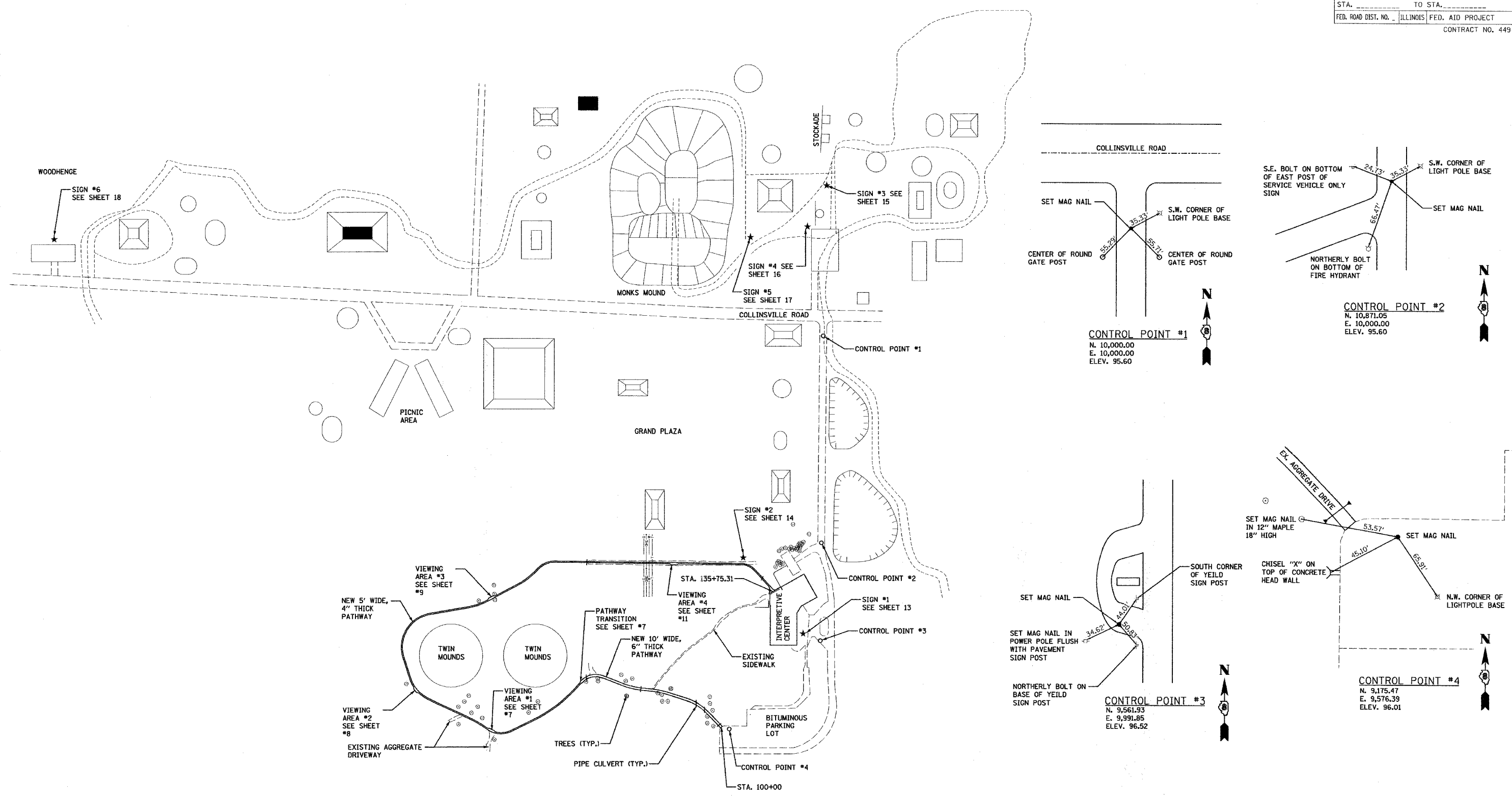
SCALE: NONE
DATE: 2-26-07

DRAWN BY: EJR
CHECKED BY: GWW

DISTRICT PROJECT ENGINEER - LANCE KIDD

DATE PLOTTED: 02/27/07 08:05:45 AM

F.A. RTE.	SECTION	COUNTY	TOTAL SHEETS	SHEET NO.
		ST. CLAIR	18	5
STA. _____		TO STA. _____		
FED. ROAD DIST. NO. ILLINOIS FED. AID PROJECT				
CONTRACT NO. 44966				



CAHOKIA MOUNDS STATE HISTORIC SITE - CONTROL POINT LOCATION MAP
 SCALE: NTS

REVISIONS	
NAME	DATE

ILLINOIS DEPARTMENT OF TRANSPORTATION
 LOCATION MAP w/ SURVEY CONTROL TIE POINTS
 IDNR / IHPA STATEWIDE SIDEWALK IMPROVEMENTS
 CAHOKIA MOUNDS STATE HISTORIC SITE
 SCALE: NONE
 DATE: 2-26-07
 DRAWN BY: EJR
 CHECKED BY: GWW

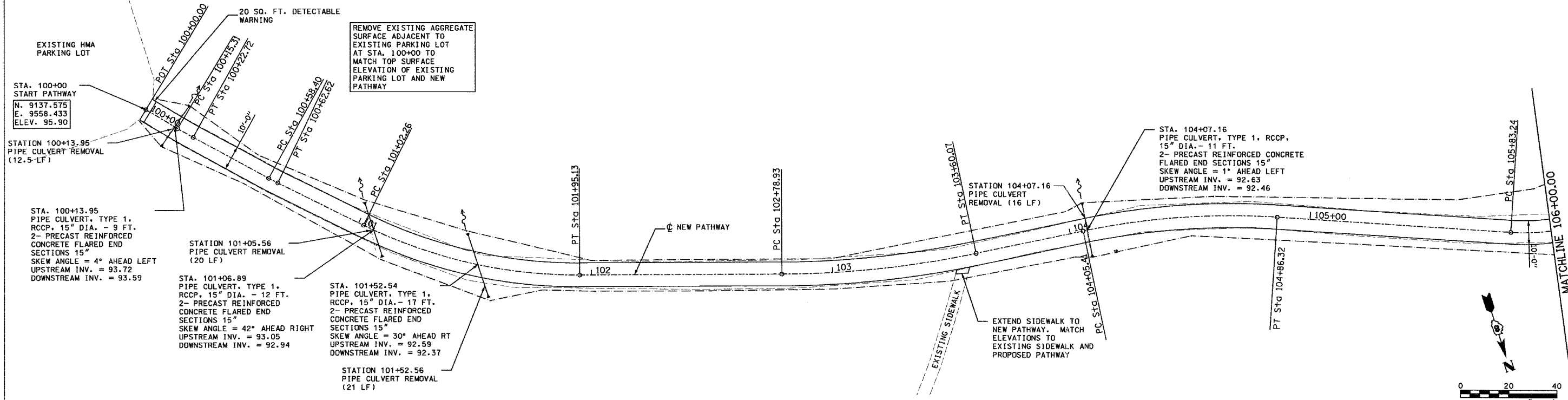
DISTRICT PROJECT ENGINEER - LANCE KIDD

"LAYOUT" MAP SURVEY TIE POINTS IS 2/27/2007 10:05:37 AM

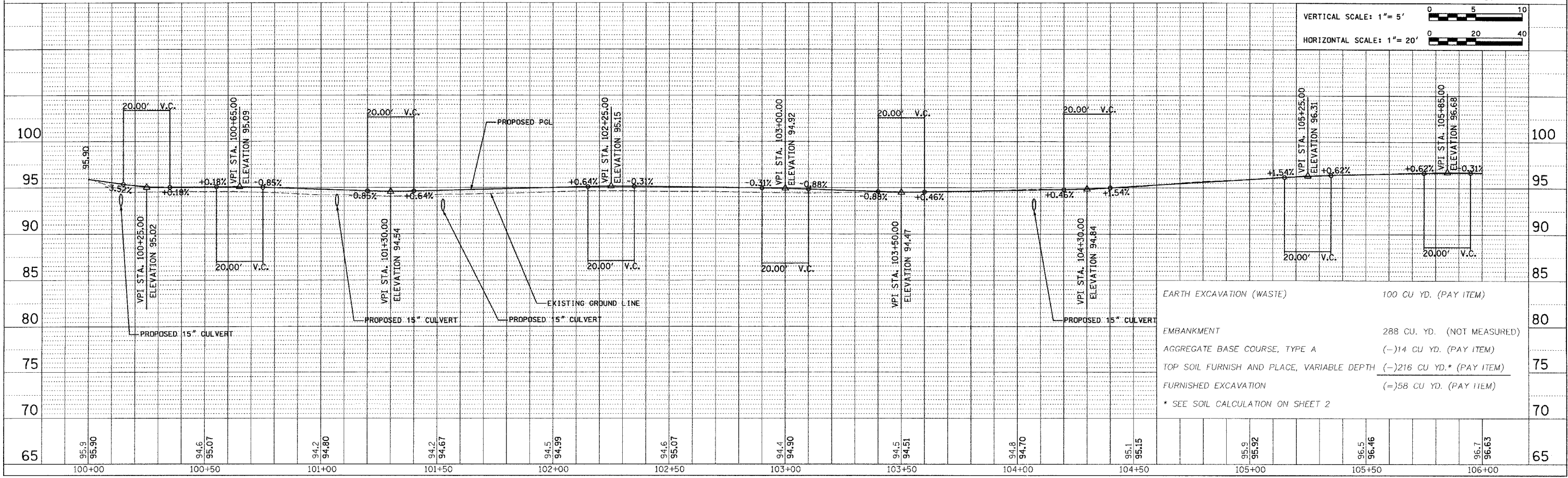
P.I. Station	100+19.01	P.I. Station	100+60.51	P.I. Station	101+49.55	P.I. Station	103+19.64	P.I. Station	104+46.11	P.I. Station	106+42.47
Delta	2° 07' 22" (LT)	Delta	2° 25' 10" (LT)	Delta	26° 36' 14" (LT)	Delta	11° 37' 21" (LT)	Delta	15° 27' 14" (RT)	Delta	69° 44' 26" (LT)
Radius	200'	Radius	100'	Radius	200'	Radius	400'	Radius	300'	Radius	85'
Tangent	3.71'	Tangent	2.11'	Tangent	47.29'	Tangent	40.71'	Tangent	40.71'	Tangent	59.23'
Length	7.41'	Length	4.22'	Length	92.87'	Length	81.14'	Length	80.92'	Length	103.46'
External	0.03'	External	0.02'	External	5.51'	External	2.07'	External	2.75'	External	18.60'
Long Chord	7.41'	Long Chord	4.22'	Long Chord	92.03'	Long Chord	81.00'	Long Chord	80.67'	Long Chord	97.19'
P.C. Station	100+15.31	P.C. Station	100+58.40	P.C. Station	101+02.26	P.C. Station	102+78.93	P.C. Station	104+05.41	P.C. Station	105+83.24
P.T. Station	100+22.72	P.T. Station	100+62.62	P.T. Station	101+95.13	P.T. Station	103+60.07	P.T. Station	104+86.32	P.T. Station	106+86.71
Back	N 41° 08' 37" W	Back	N 43° 15' 59" W	Back	N 45° 41' 09" W	Back	N 72° 17' 24" W	Back	N 83° 54' 45" W	Back	N 68° 27' 31" W
Ahead	N 43° 15' 59" W	Ahead	N 45° 41' 09" W	Ahead	N 72° 17' 24" W	Ahead	N 83° 54' 45" W	Ahead	N 68° 27' 31" W	Ahead	S 41° 48' 03" W

F.A. RTE.	SECTION	COUNTY	TOTAL SHEETS	SHEET NO.
		ST. CLAIR	18	6
STA. 100+00		TO STA. 106+00		
FED. ROAD DIST. NO.		ILLINOIS FED. AID PROJECT		CONTRACT NO. 44966

PLAN	DATE
BY	
REVISIONS	
NO.	DESCRIPTION
1	AS SHOWN



PROFILE	DATE
BY	
REVISIONS	
NO.	DESCRIPTION
1	AS SHOWN

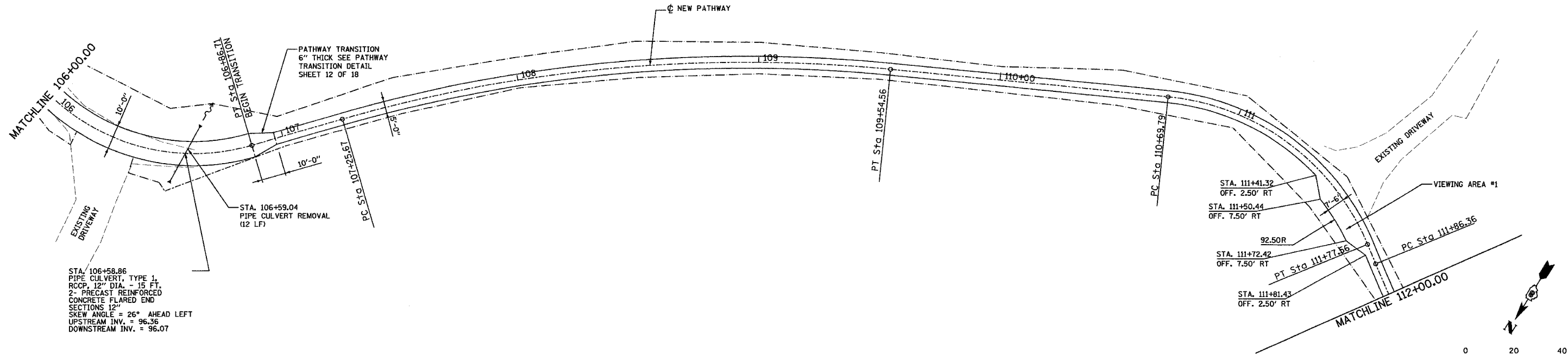


2/27/2007 8:54:40 AM

P.I. Station	108+41.52	P.I. Station	111+29.58	P.I. Station	112+31.78
Delta	21° 51' 28" (RT)	Delta	61° 44' 38" (RT)	Delta	10° 22' 58" (LT)
Radius	600'	Radius	100'	Radius	500'
Tangent	115.86'	Tangent	59.78'	Tangent	45.43'
Length	228.89'	Length	107.76'	Length	90.61'
External	11.08'	External	16.51'	External	2.06'
Long Chord	227.51'	Long Chord	102.62'	Long Chord	90.48'
P.C. Station	107+25.67	P.C. Station	110+59.79	P.C. Station	111+46.36
P.T. Station	109+54.56	P.T. Station	111+77.56	P.T. Station	112+76.96
Back	S 41° 48' 03" W	Back	S 63° 39' 31" W	Back	N 54° 35' 50" W
Ahead	S 63° 39' 31" W	Ahead	N 54° 35' 50" W	Ahead	N 64° 58' 49" W

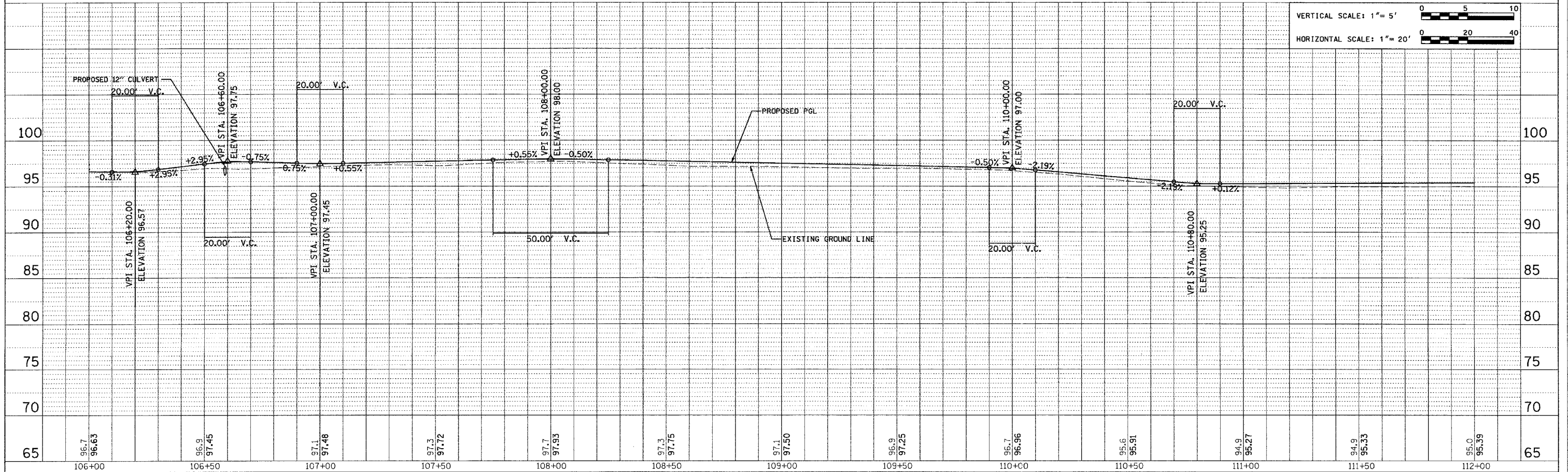
F.A. RTE.	SECTION	COUNTY	TOTAL SHEETS	SHEET NO.
		ST. CLAIR	18	7
STA. 106+00		TO STA. 112+00		
FED. ROAD DIST. NO. ILLINOIS FED. AID PROJECT				
CONTRACT NO. 44966				

DATE	
BY	
REVIEWED	
PLANNED	
NOTED	
NO.	



STA. 106+58.86
 PIPE CULVERT, TYPE 1,
 RCCP, 12" DIA. - 15 FT.
 2" PRECAST REINFORCED
 CONCRETE FLARED END
 SECTIONS 12'
 SKEW ANGLE = 26° AHEAD LEFT
 UPSTREAM INV. = 96.36
 DOWNSTREAM INV. = 96.07

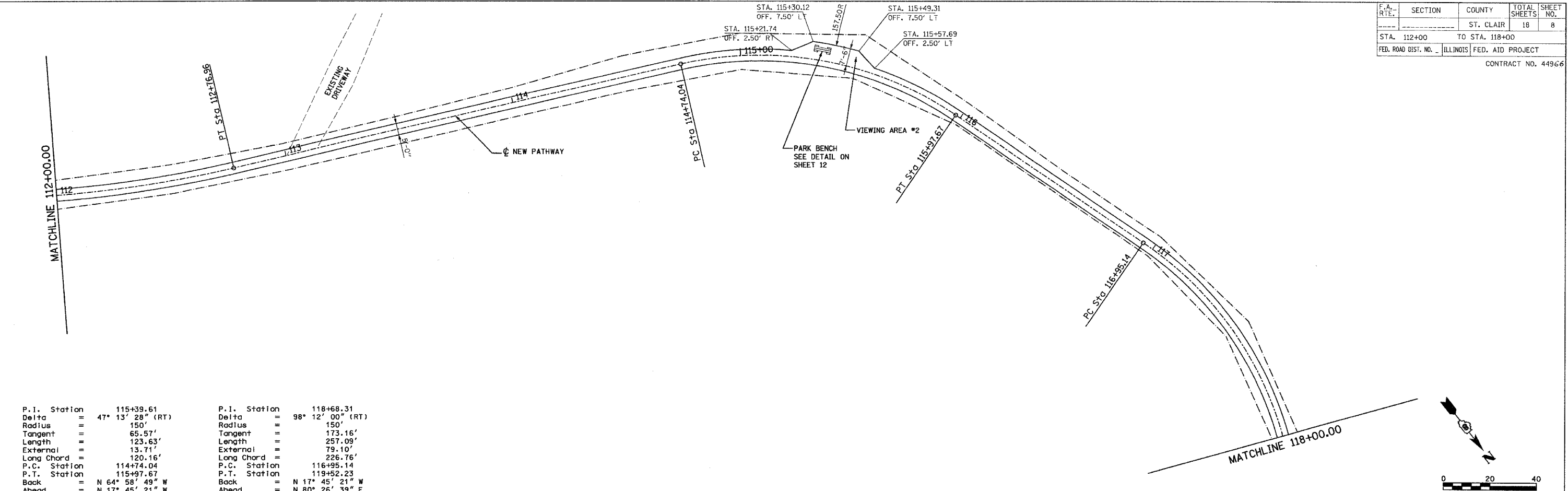
DATE	
BY	
REVIEWED	
PLANNED	
NOTED	
NO.	



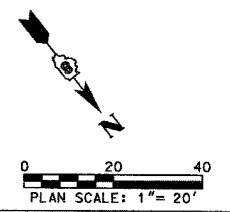
VERTICAL SCALE: 1" = 5'
 HORIZONTAL SCALE: 1" = 20'

F.A. RTE.	SECTION	COUNTY	TOTAL SHEETS	SHEET NO.
		ST. CLAIR	18	8
STA. 112+00		TO STA. 118+00		
FED. ROAD DIST. NO. ILLINOIS FED. AID PROJECT				
CONTRACT NO. 44966				

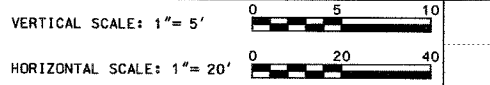
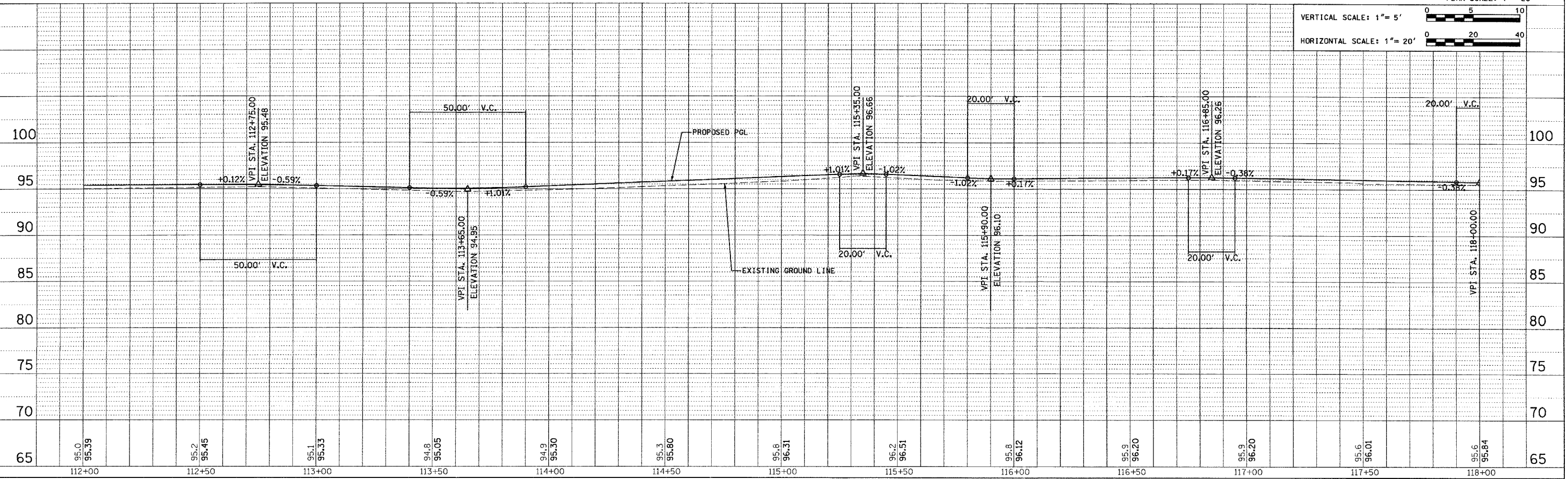
DATE	BY
REVIEWED	DATE
ALIGNED CHECKED	
NOTE BOOK	
NO.	



P.I. Station	115+39.61	P.I. Station	118+68.31
Delta	47° 13' 28" (RT)	Delta	98° 12' 00" (RT)
Radius	150'	Radius	150'
Tangent	65.57'	Tangent	173.16'
Length	123.63'	Length	257.09'
External	13.71'	External	79.10'
Long Chord	120.16'	Long Chord	226.76'
P.C. Station	114+74.04	P.C. Station	116+95.14
P.T. Station	115+97.67	P.T. Station	119+52.23
Back	N 64° 58' 49" W	Back	N 17° 45' 21" W
Ahead	N 17° 45' 21" W	Ahead	N 80° 26' 39" E

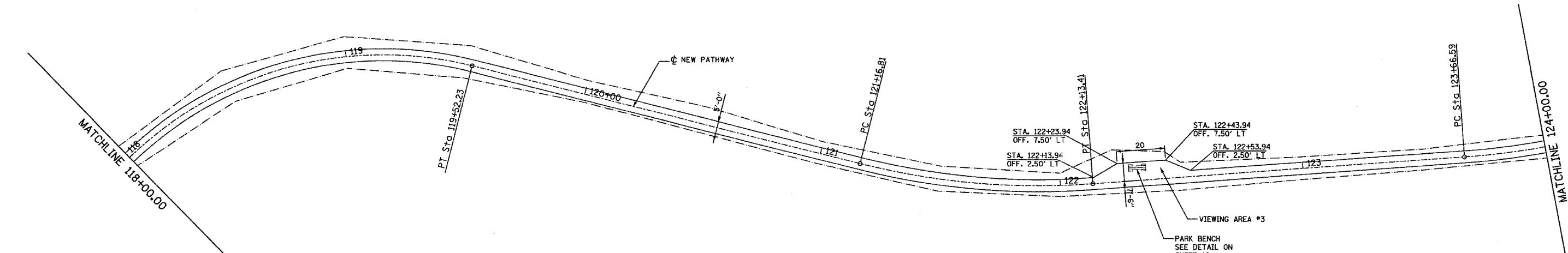


DATE	BY
REVIEWED	DATE
GRADES CHECKED	
NOTE BOOK	
NO.	

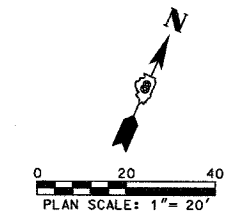


F.A. RTE.	SECTION	COUNTY	TOTAL SHEETS	SHEET NO.
		ST. CLAIR	18	9
STA. 118+00		TO STA. 124+00		
FED. ROAD DIST. NO. _		ILLINOIS FED. AID PROJECT		
CONTRACT NO. 44966				

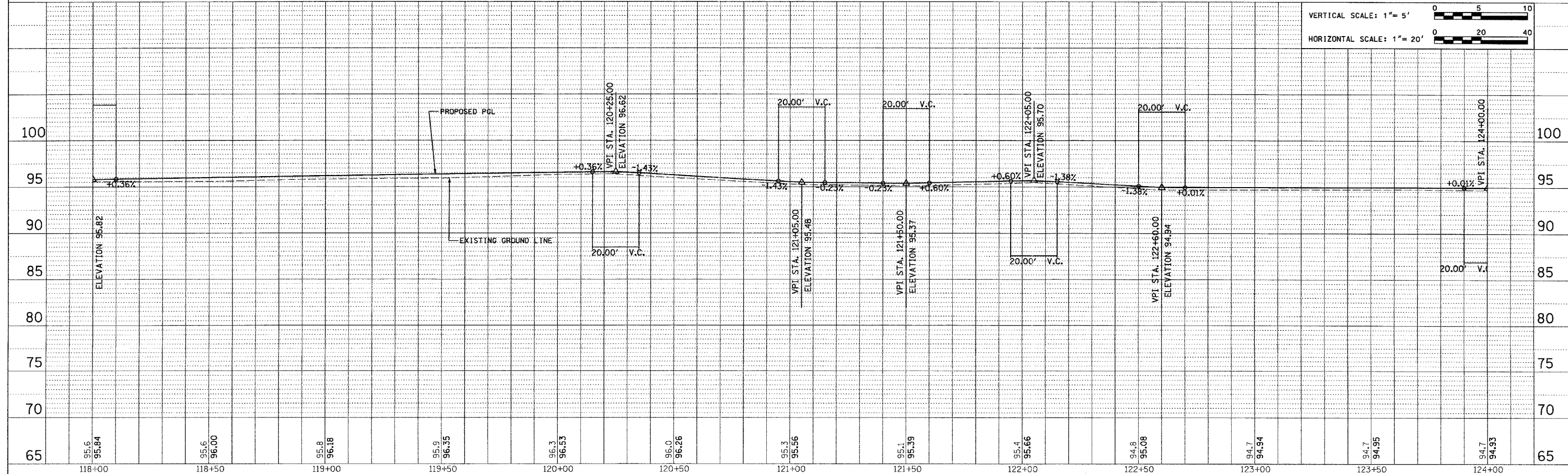
DATE	BY	REVIEWED	DATE
PLAN	NO. _____	NOTE BOOK	NO. _____
		ALIGNMENT CHECKED	NO. _____
		AS BUILT	NO. _____
		CADD FILE NAME	



P.I. Station	121+65.53	P.I. Station	124+14.32
Delta	18° 26' 57" (LT)	Delta	18° 04' 48" (LT)
Radius	300'	Radius	300'
Tangent	48.72'	Tangent	47.73'
Length	96.60'	Length	94.67'
External	3.93'	External	3.77'
Long Chord	96.18'	Long Chord	94.27'
P.C. Station	121+16.81	P.C. Station	123+66.59
P.T. Station	122+13.41	P.T. Station	124+61.26
Back	N 80° 26' 39" E	Back	N 61° 59' 42" E
Ahead	N 61° 59' 42" E	Ahead	N 43° 54' 54" E



DATE	BY	REVIEWED	DATE
PROFILE	NO. _____	NOTE BOOK	NO. _____
		GRADES CHECKED	NO. _____
		STRUCTURE NOTATIONS DRWN	NO. _____



VERTICAL SCALE: 1" = 5'
HORIZONTAL SCALE: 1" = 20'

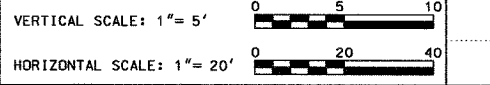
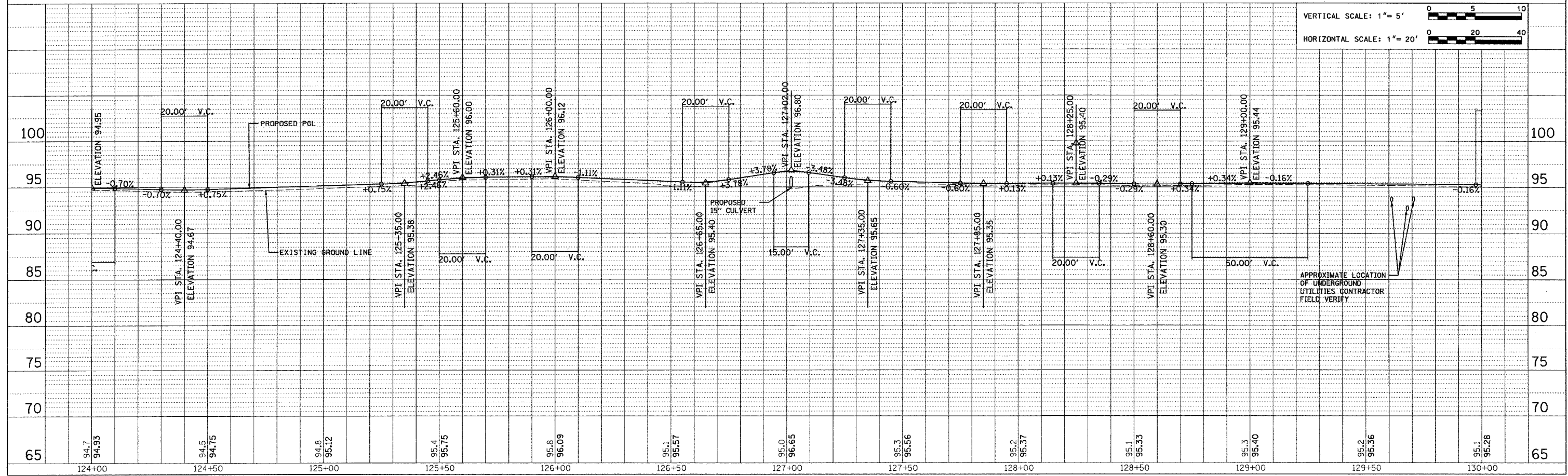
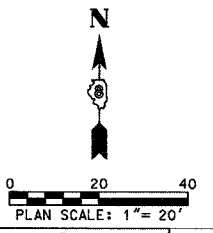
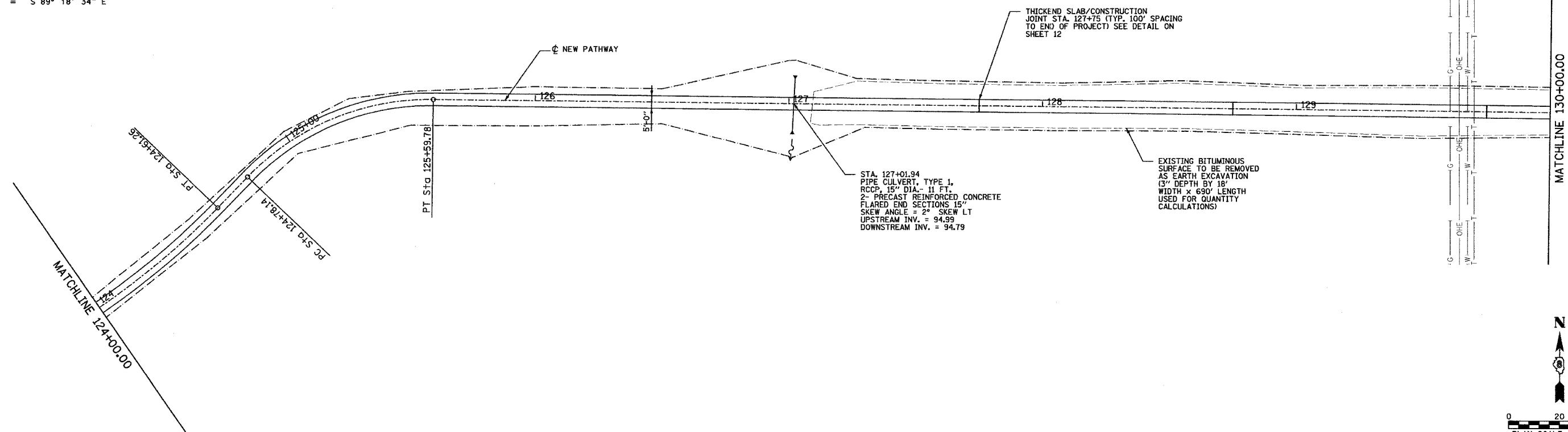
P.I. Station 125+21.39
 Delta = 46° 46' 32" (RT)
 Radius = 100'
 Tangent = 43.25'
 Length = 81.64'
 External = 8.95'
 Long Chord = 79.39'
 P.C. Station 124+78.14
 P.T. Station 125+59.78
 Back = N 43° 54' 54" E
 Ahead = S 89° 18' 34" E

F.A. RTE.	SECTION	COUNTY	TOTAL SHEETS	SHEET NO.
		ST. CLAIR	18	10
STA. 124+00		TO STA. 130+00		
FED. ROAD DIST. NO.		ILLINOIS FED. AID PROJECT		

CONTRACT NO. 44966

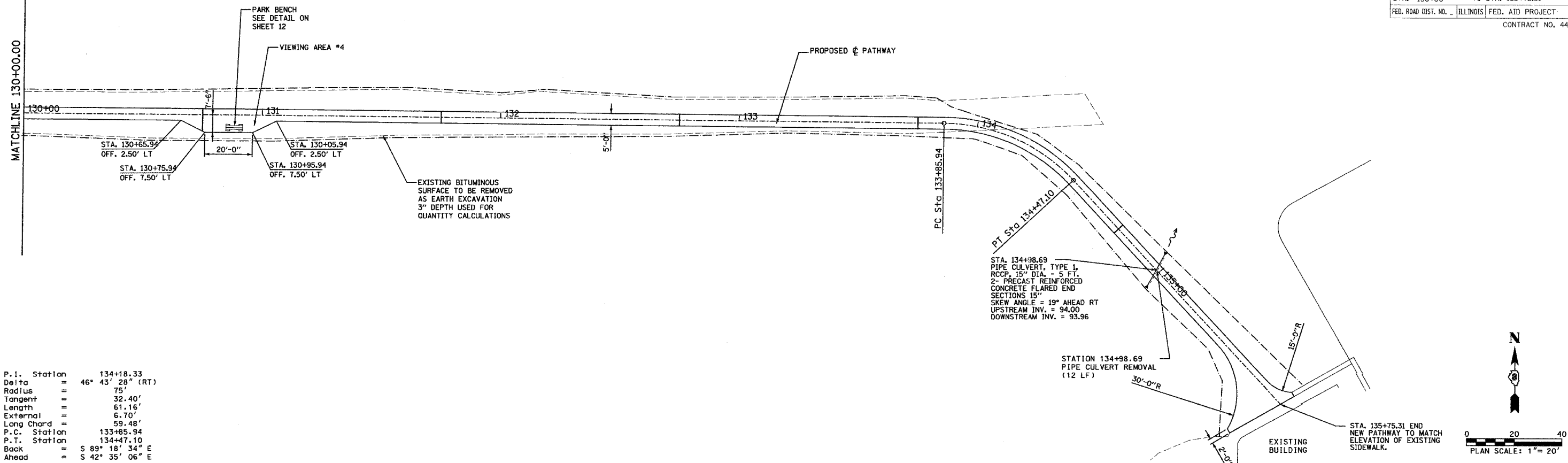
PLAN	DATE
REVISIONS	BY
NOTED	
ALIGNED	
CHECKED	
DATE	
NO.	

PROFILE	DATE
REVISIONS	BY
NOTED	
GRADES	
CHECKED	
DATE	
NO.	



APPROXIMATE LOCATION OF UNDERGROUND UTILITIES CONTRACTOR FIELD VERIFY

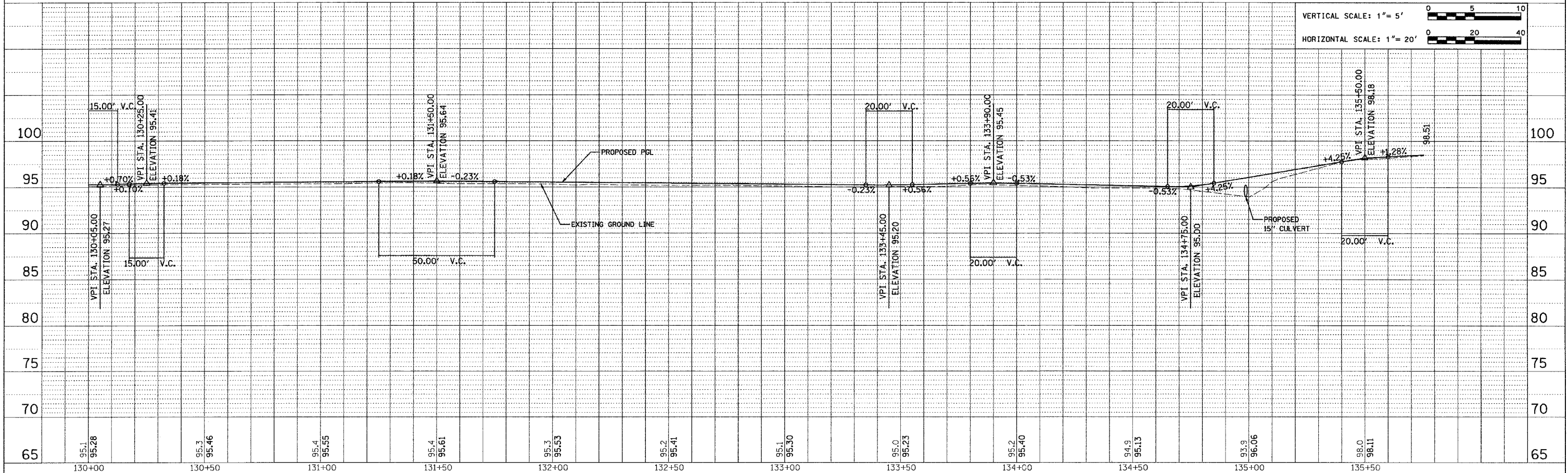
F.A. RTE.	SECTION	COUNTY	TOTAL SHEETS	SHEET NO.
		ST. CLAIR	18	11
STA. 130+00		TO STA. 135+75.31		
FED. ROAD DIST. NO.		ILLINOIS FED. AID PROJECT		
CONTRACT NO. 44966				



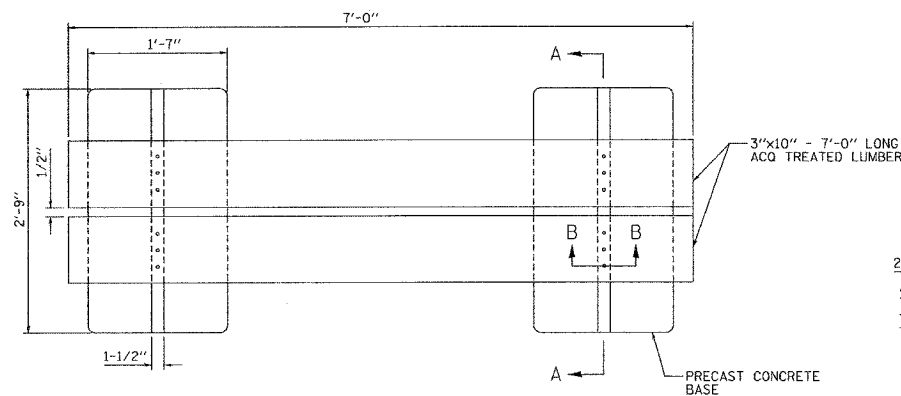
P.I. Station = 134+18.33
 Delta = 46° 43' 28" (RT)
 Radius = 75'
 Tangent = 32.40'
 Length = 61.16'
 External = 6.70'
 Long Chord = 59.48'
 P.C. Station = 133+85.94
 P.T. Station = 134+47.10
 Back = S 89° 18' 34" E
 Ahead = S 42° 35' 06" E

DATE	
BY	
REVISION	
NO.	
DESCRIPTION	
DATE	
BY	
REVISION	
NO.	
DESCRIPTION	
DATE	
BY	
REVISION	
NO.	
DESCRIPTION	

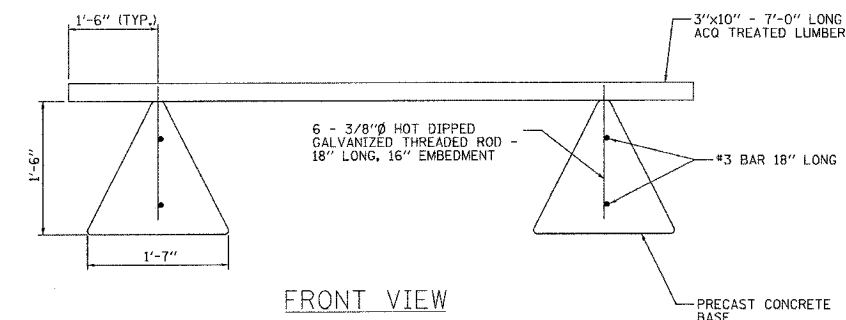
DATE	
BY	
REVISION	
NO.	
DESCRIPTION	
DATE	
BY	
REVISION	
NO.	
DESCRIPTION	
DATE	
BY	
REVISION	
NO.	
DESCRIPTION	



F.A. RTE.	SECTION	COUNTY	TOTAL SHEETS	SHEET NO.
		ST. CLAIR	18	12
STA.		TO STA.		
FED. ROAD DIST. NO.		ILLINOIS FED. AID PROJECT		
CONTRACT NO. 449 66				

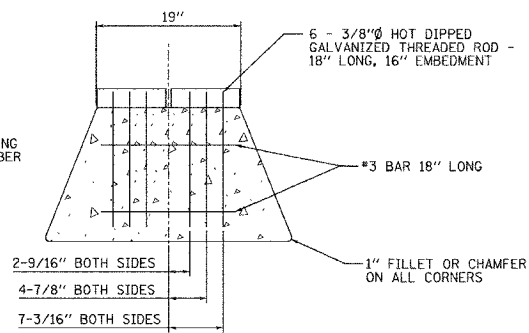


TOP VIEW

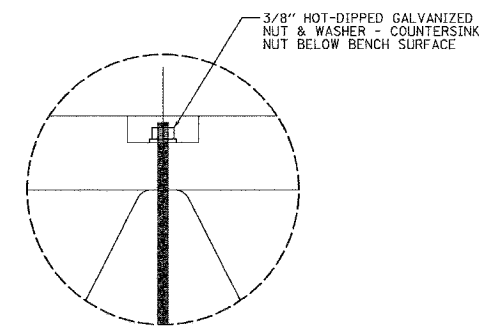


FRONT VIEW

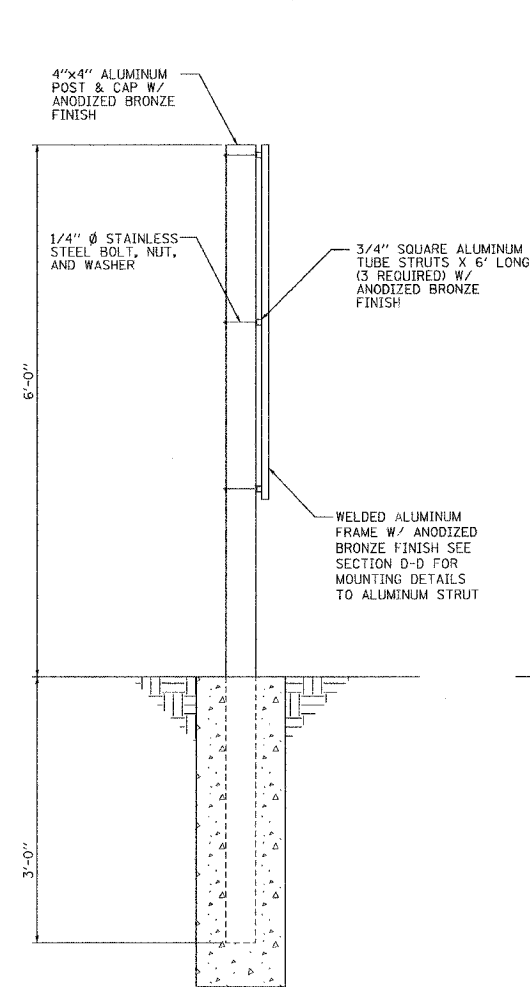
PARK BENCH DETAIL
SCALE: 1"=1'-0"



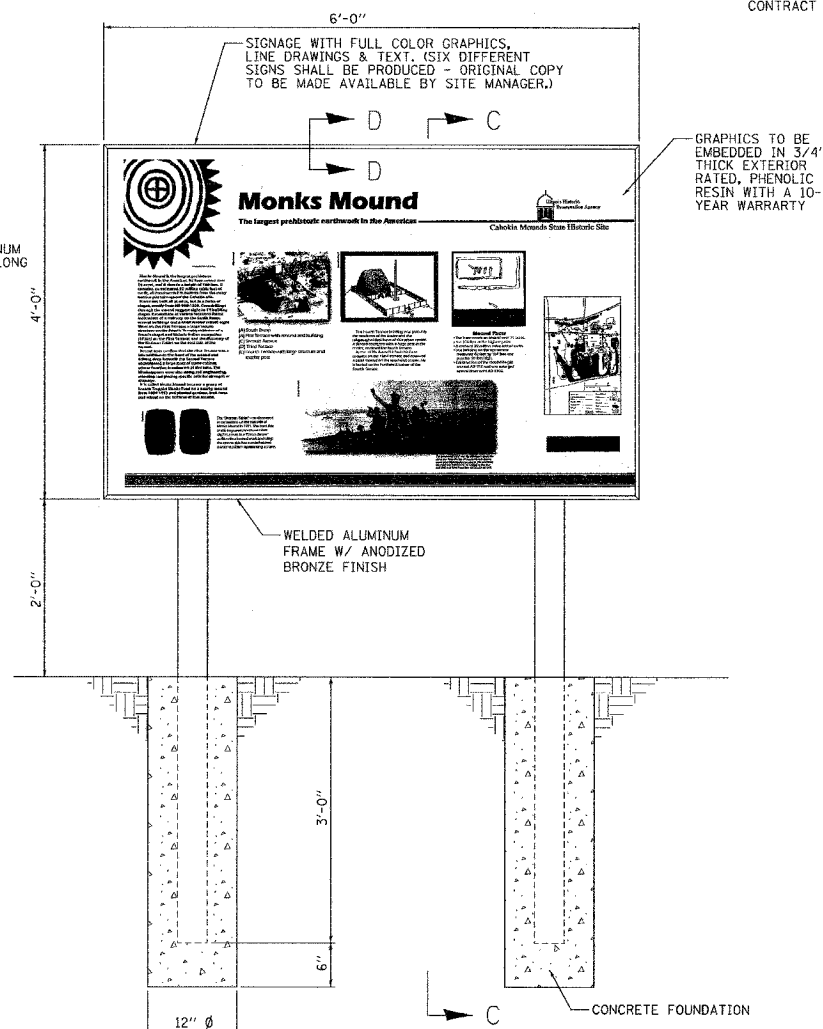
SECTION A-A



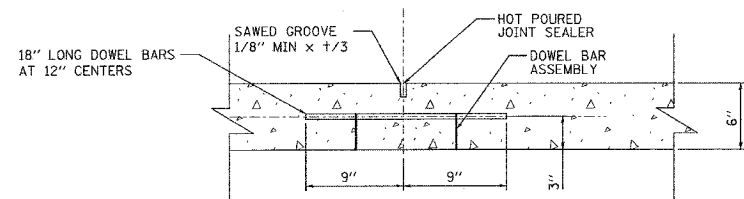
SECTION B-B



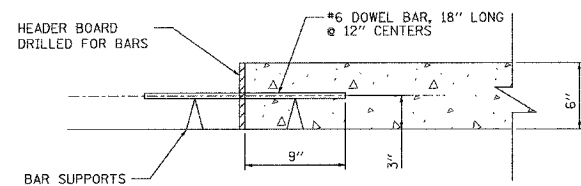
SECTION C-C
SCALE: 1"=1'-0"



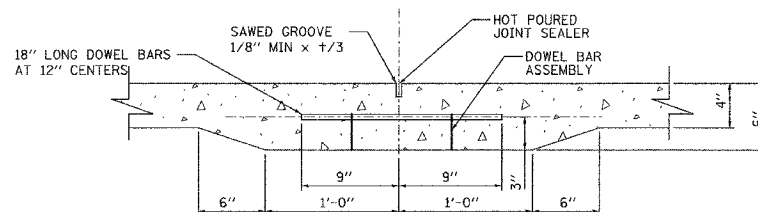
SIGN PANEL DETAIL
SCALE: 1"=1'-0"



TRANSVERSE CONTRACTION JOINT - 6" P.C.C. PATHWAY
SCALE: 1-1/2"=1'-0"

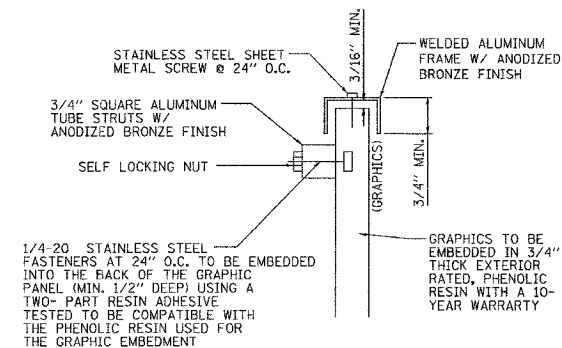


TRANSVERSE CONSTRUCTION JOINT - 6" P.C.C. PATHWAY
SCALE: 1-1/2"=1'-0"

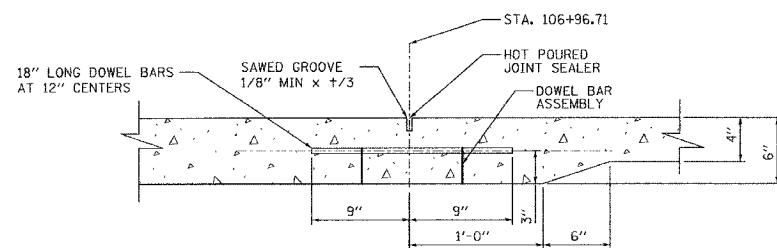


THICKENED SLAB/CONSTRUCTION JOINT
SCALE: 1-1/2"=1'-0"

NOTE:
THICKENED SLAB/CONSTRUCTION JOINTS TO BE PLACED AT THE FOLLOWING STATIONS:
128+75
129+75
130+75
131+75
132+75
133+75
134+75



SECTION D-D
SCALE: 6"=1'-0"



PATHWAY TRANSITION
SCALE: 1-1/2"=1'-0"

NOTE:
SIGN PANELS SHALL BE LOCATED SO THAT GRAPHICS ARE FACING THE NORTHERLY DIRECTION TO MINIMIZE FADING. COORDINATE EXACT ORIENTATION WITH SITE MANAGER

REVISIONS	
NAME	DATE

ILLINOIS DEPARTMENT OF TRANSPORTATION
DETAILS
IDNR / IHPA STATEWIDE
SIDEWALK IMPROVEMENTS
CAHOKIA MOUNDS STATE
HISTORIC SITE

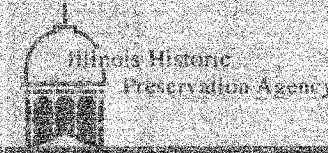
SCALE: SEE DETAILS
DATE: 2-26-07

DRAWN BY: EJR
CHECKED BY: GWW



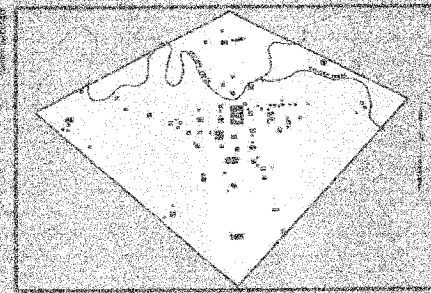
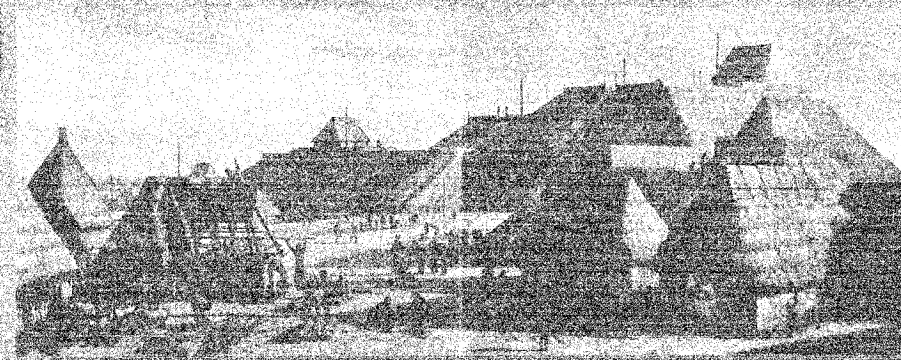
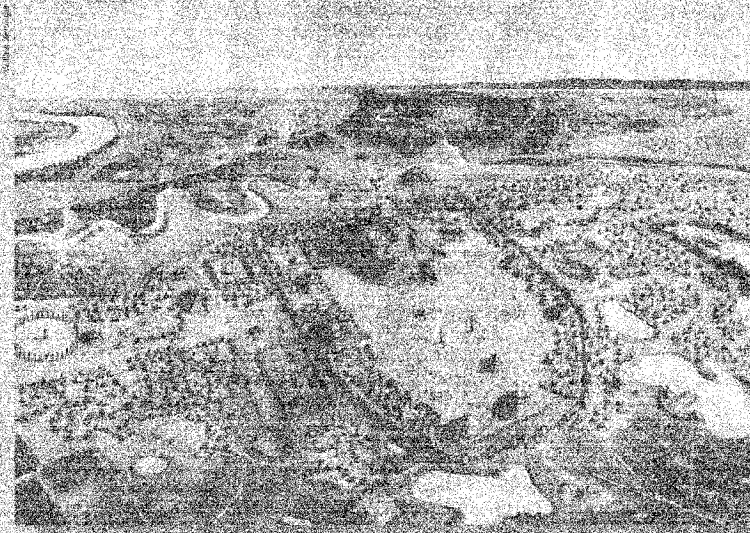
Cahokia

City of the Sun



Cahokia Mounds State Historic Site

Cahokia Mounds State Historic Site
National Historic Landmark and
UNESCO World Heritage Site

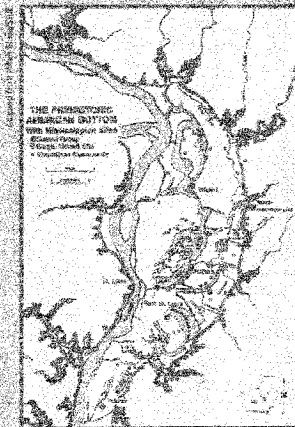


Map of the Cahokia Mounds site showing the layout of the mounds.



Reconstruction drawing of a village scene with people and structures.

Reconstruction drawing of a village scene with people and structures.



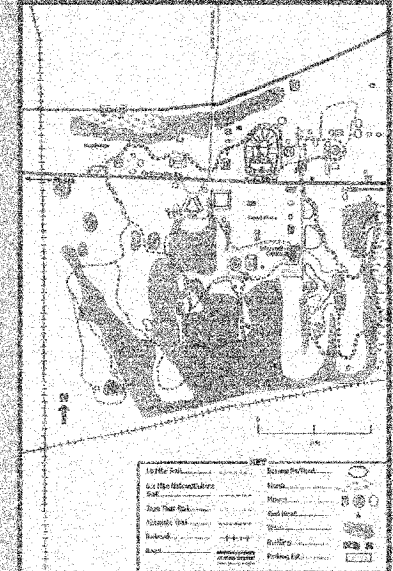
Map of the Mississippi River valley showing the location of Cahokia.

Cahokia was the largest prehistoric Indian community in America north of Mexico. It covered an area of 500 square miles, including at least 120 mounds of different size and function. Initial occupation during late Woodland times (AD 700-800) included small settlements along Cahokia Creek. These expanded and merged during early Mississippian times (AD 800-1000) and the population and community increased, reaching a peak between AD 1050-1150 with an estimated population of 10-20,000. A period of change and population decline began in the 1200s and by AD 1350-1400, Cahokia had been abandoned.

Indians of the Mississippian culture built this community and many other large and small ones throughout the Mississippi floodplain and the adjacent uplands. Cahokia was the center of a large complex chiefdom that had ceremonial and trade connections to other Mississippian sites throughout the Midwest and Southeast.

The decline of Cahokia may be attributed to a combination of many factors, including depletion of resources in the region; internal social and political unrest; external friction and conflicts with other groups; climatic changes affecting crops and local flora and fauna; soil exhaustion due to intensive agriculture; and loss of control and influence over contemporary sites and groups.

Site Trail Guide



F.A. RTE.	SECTION	COUNTY	TOTAL SHEETS	SHEET NO.
		ST. CLAIR	18	13
STA.		TO STA.		
FED. ROAD DIST. NO.		ILLINOIS FED. AID PROJECT		
CONTRACT NO. 44966				

NOTES:
FULL-COLOR, ELECTRONIC FILE GRAPHICS WILL BE MADE AVAILABLE TO CONTRACTOR FOR EMBEDDED FIBERGLASS SIGN PRODUCTION.

REVISIONS	
NAME	DATE

ILLINOIS DEPARTMENT OF TRANSPORTATION
SIGN GRAPHICS 1
IDNR / IHPA STATEWIDE SIDEWALK IMPROVEMENTS CAHOKIA MOUNDS STATE HISTORIC SITE

SCALE: NTS
DATE: 2-26-07
DRAWN BY: EJR
CHECKED BY: GWW

DISTRICT PROJECT ENGINEER - LANCE KIDD

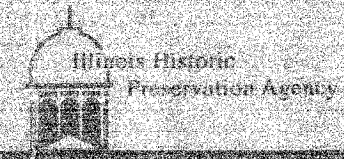
F.A. RTE.	SECTION	COUNTY	TOTAL SHEETS	SHEET NO.
		ST. CLAIR	18	14
STA.		TO STA.		
FED. ROAD DIST. NO.		ILLINOIS FED. AID PROJECT		
CONTRACT NO. 44966				



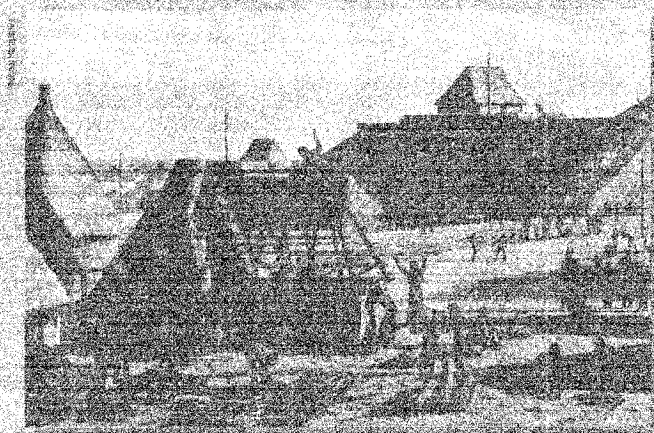
Stone tablet on a shell fragment

Grand Plaza

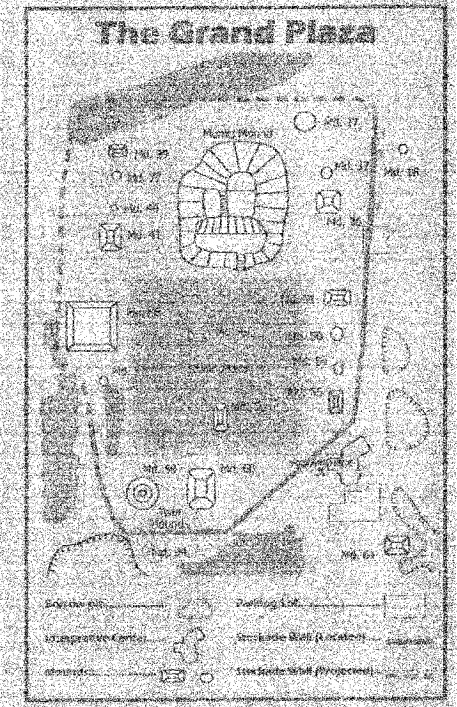
Heart of the City



Cahokia Mounds State Historic Site

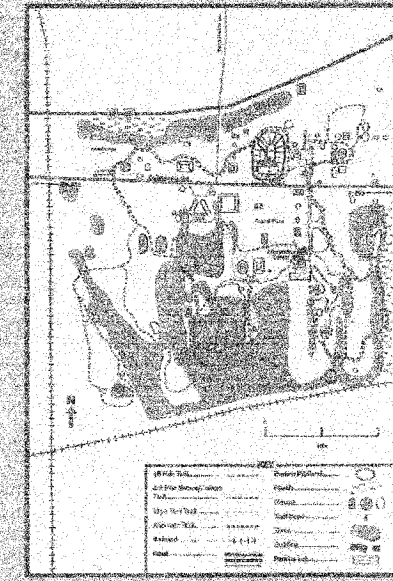


View of mounds and structures in and around the Grand Plaza.



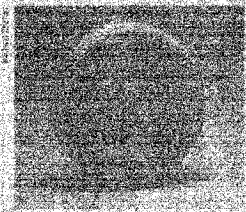
The 46-acre Grand Plaza was bounded on the north by Mounds 17 and 23 and on the south by the Twin Mounds (20 & 21). Mounds 22 and 56 are to their north. The Plaza includes Mounds 24, 25, and 30 near its east edge, and Mounds 19 and 31 near its west edge.

Site Trail Guide

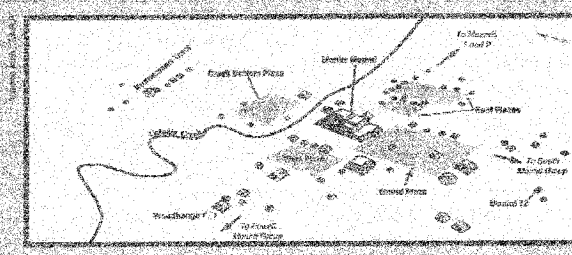


A view of Cahokia, looking north between the Twin Mounds, across the Grand Plaza. Mounds 19 and 21 in the foreground are a double ditch and raised embankment that runs along the plaza's edge, in front of the mounds of the site.

The heart of Cahokia was the Grand Plaza, situated between Mound 17 and the Twin Mounds. Archaeological testing has confirmed that the plaza was, in part, artificially created by filling in low areas and reducing high points to create a flat, prepared surface. It was here that public gatherings, markets and festivals would take place and the chief could address the assembled masses from Mound 17.



The class of clay pipe, or pipe called by archaeologists "bottle pipes," was apparently popular at Cahokia. Many clay pipe stems, or stems, have been found here, such as the one from Mound 22 (left). The pipe was closed by a flat head, and the stem has a narrow neck. The pipe was made of a mixture of clay and sand. The pipe was found in a shallow pit, and it is thought that the pipe was used for drinking. A clay pipe like this was found in other sites, and it is thought that it was a common pipe.



Large pipes were found with pipe stems, and the stems of the pipes were found throughout the site.

The Grand Plaza was a large, flat, prepared surface. It was here that public gatherings, markets and festivals would take place and the chief could address the assembled masses from Mound 17.

DISTRICT PROJECT ENGINEER - LANCE KIDD

REVISIONS	
NAME	DATE

ILLINOIS DEPARTMENT OF TRANSPORTATION
SIGN GRAPHICS 2
 IDNR / IHPA STATEWIDE
 SIDEWALK IMPROVEMENTS
 CAHOKIA MOUNDS STATE
 HISTORIC SITE

SCALE: NTS
 DATE: 2-26-07

DRAWN BY: EJR
 CHECKED BY: GWV

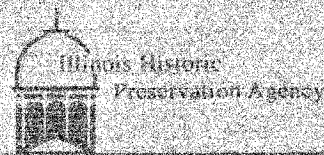
F.A. RTE.	SECTION	COUNTY	TOTAL SHEETS	SHEET NO.
		ST. CLAIR	18	15
STA.		TO STA.		
FED. ROAD DIST. NO.		ILLINOIS FED. AID PROJECT		
CONTRACT NO. 4496P				



Woodblock print design from the Stone River Lintel from Cahokia

Stockade

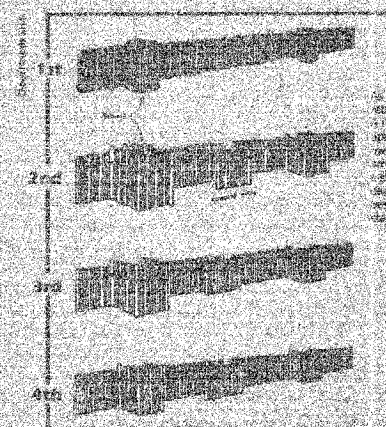
A Walled City



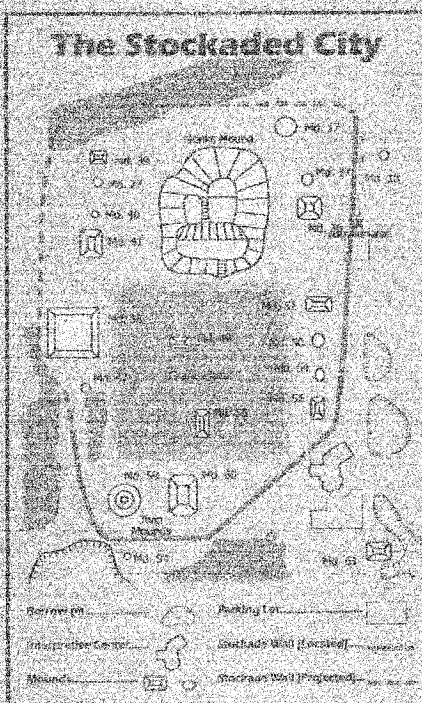
Cahokia Mounds State Historic Site



View of the Stockade from the Cahokia Mounds State Historic Site



As shown in these illustrations, the wall was built in several stages between AD 1150 to 1250. A stock wall required an earthen ramp one approach at 90 feet intervals along the defensive wall. Each section was built on a raised platform, and shaped entirely by hand. The spacing between walls was approximately 100 feet. The spacing between walls became more frequent, indicating a standard width of structure had been determined.



The central ceremonial precinct of Cahokia was enclosed by a defensive wall, the Stockade (or Palisade). It was built of upright logs placed in 4-5 foot deep trenches and probably stood 10-15 feet high above the ground. It would take an estimated 15-20,000 logs to build this wall that was nearly two miles long. At regular intervals (about 95 feet, center-to-center) were bastions, guard towers with raised platforms for warriors to protect the front of the wall. I-shaped entryways were occasionally placed between bastions.

The Stockade would also serve a social function. The wall enclosed an area of nearly 200 acres, including Mounds 10 and 17

other mounds. Those living inside the sacred precinct were somehow different from those living outside, possibly related to the ruling elite. However, it is likely that all citizens would be allowed inside for festivals and ceremonies or to help defend, if needed. It is not known if the enemy were local or from distant areas, or if the site was ever attacked.

The word does not survive, but archaeologists can see dark linear stains in the soil marking where the trenches had been dug into the lighter substrate. Four constructions of wall are evident, often overlapping each other, with the size and shape of the bastions changing each time.



Map of the Stockade excavations in this part of the site, showing the four constructions of the wall and their individual bastions and gates.

Site Trail Guide



For more information on the Cahokia Mounds State Historic Site, visit our website at www.dnr.state.il.us/ohs/cahokia.

NOTES:
FULL-COLOR, ELECTRONIC FILE GRAPHICS WILL BE MADE AVAILABLE TO CONTRACTOR FOR EMBEDDED FIBERGLASS SIGN PRODUCTION.

DISTRICT PROJECT ENGINEER - LANCE KIDD

REVISIONS	
NAME	DATE

ILLINOIS DEPARTMENT OF TRANSPORTATION
SIGN GRAPHICS 3
IDNR / IHPA STATEWIDE
SIDEWALK IMPROVEMENTS
CAHOKIA MOUNDS STATE
HISTORIC SITE

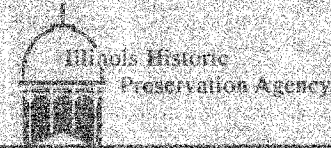
SCALE: NTS
DATE: 2-26-07

DRAWN BY: EJR
CHECKED BY: GWJ



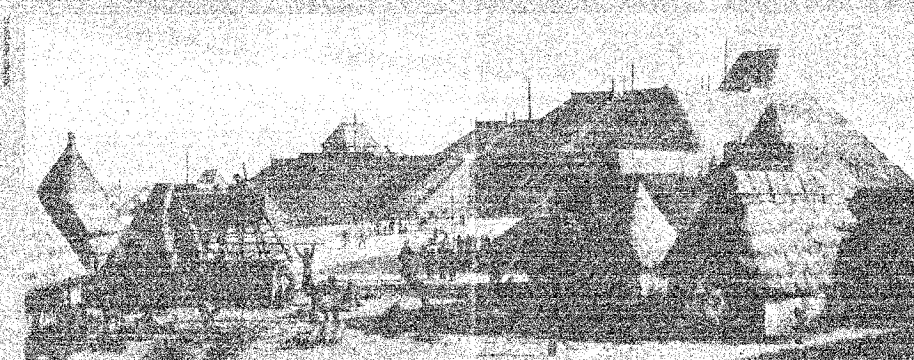
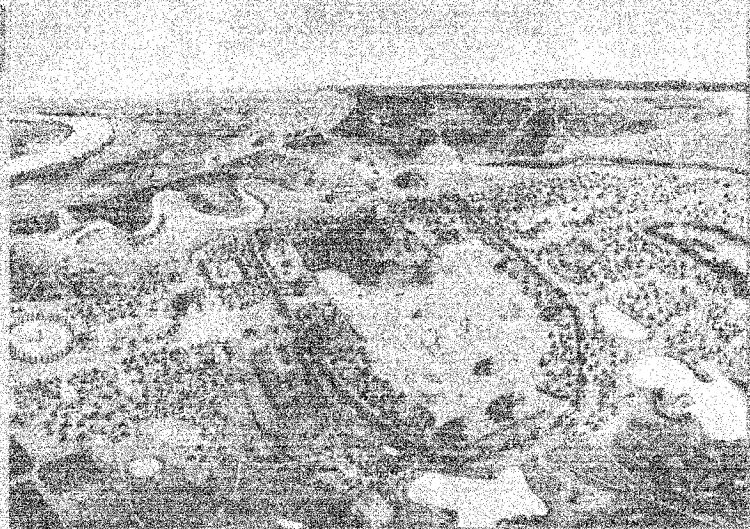
Cahokia

City of the Sun

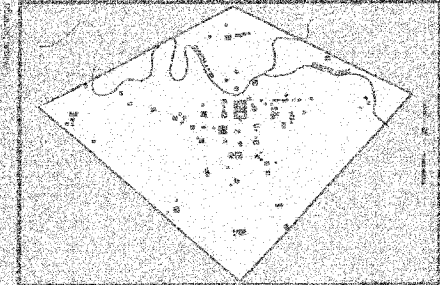


Cahokia Mounds State Historic Site

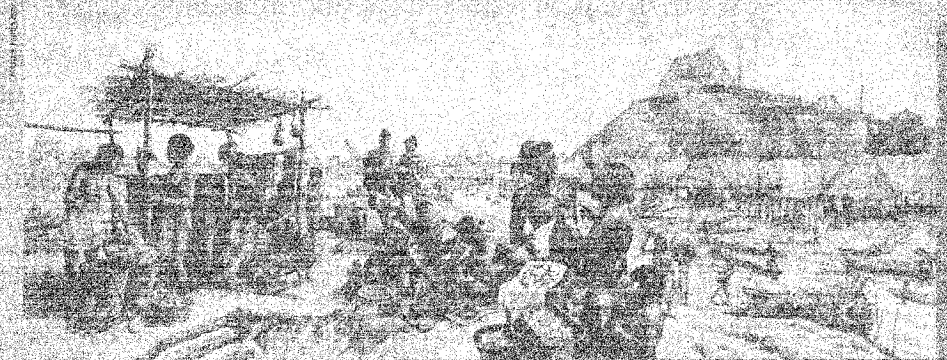
Archaeological site of Cahokia Mounds, Illinois, showing the location of the site relative to the Mississippi River and the city of St. Louis, Missouri.



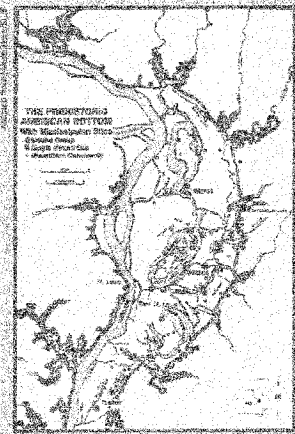
Reconstruction drawing of a large earthen mound structure at Cahokia Mounds, Illinois.



Map of the Cahokia Mounds site showing the layout of the mounds and surrounding area.



Reconstruction drawing of a village scene with several thatched-roof huts and people.



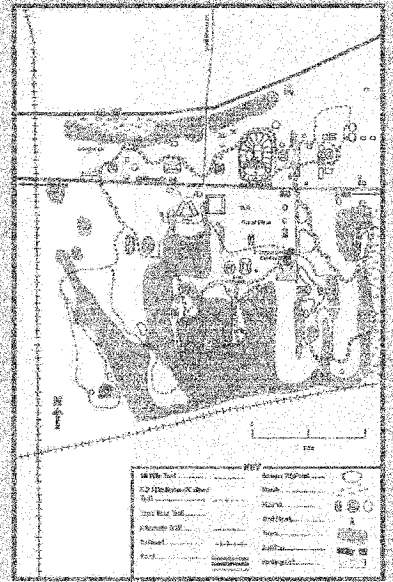
Map of the Mississippi River region showing the location of Cahokia Mounds.

Cahokia was the largest prehistoric Indian community in America north of Mexico. It covered an area of six square miles, including at least 120 mounds of different size and function. Initial occupation during Late Woodland times (AD 700-800) included small settlements along Cahokia Creek. These expanded and merged during early Mississippian times (AD 900-1000) and the population and complexity increased, reaching a peak between AD 1050-1150 with an estimated population of 10,000-15,000. A period of change and population decline began in the 1200s and by AD 1350-1400, Cahokia had been abandoned.

Indians of the Mississippian culture built this community and many other large and small ones throughout the Mississippi floodplain and the adjacent uplands. Cahokia was the center of a large complex chiefdom that had ceremonial and trade connections to other Mississippian sites throughout the Midwest and Southeast.

The decline of Cahokia may be attributed to a combination of many factors, including depletion of resources in the region, internal social and political unrest, extensive fires and conflicts with other groups, climatic changes affecting crops and local flora and fauna, soil exhaustion due to intensive agriculture, and loss of control and influence over contemporary sites and groups.

Site Trail Guide



F.A. RTE.	SECTION	COUNTY	TOTAL SHEETS	SHEET NO.
		ST. CLAIR	18	16
STA. _____		TO STA. _____		
FED. ROAD DIST. NO. _____		ILLINOIS FED. AID PROJECT		

CONTRACT NO. 44966

NOTES:
FULL-COLOR, ELECTRONIC FILE GRAPHICS WILL BE MADE AVAILABLE TO CONTRACTOR FOR EMBEDDED FIBERGLASS SIGN PRODUCTION.

REVISIONS	
NAME	DATE

ILLINOIS DEPARTMENT OF TRANSPORTATION
SIGN GRAPHICS 4
IDNR / IHPA STATEWIDE SIDEWALK IMPROVEMENTS CAHOKIA MOUNDS STATE HISTORIC SITE

SCALE: NTS
DATE: 2-26-07

DRAWN BY: EJR
CHECKED BY: GWW

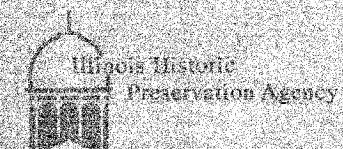
DISTRICT PROJECT ENGINEER - LANCE KIDD

F.A. RTE.	SECTION	COUNTY	TOTAL SHEETS	SHEET NO.
		ST. CLAIR	18	17
STA.		TO STA.		
FED. ROAD DIST. NO.		ILLINOIS FED. AID PROJECT		
CONTRACT NO. 44966				



Monks Mound

The largest prehistoric earthwork in the Americas



Cahokia Mounds State Historic Site

NOTES:
FULL-COLOR, ELECTRONIC FILE
GRAPHICS WILL BE MADE
AVAILABLE TO CONTRACTOR FOR
EMBEDDED FIBERGLASS SIGN
PRODUCTION.

Monks Mound is the largest prehistoric earthwork in the Americas. Its base covers over 14 acres, and it rises to a height of 100 feet. It contains an estimated 22 million cubic feet of earth, all hand-carried in baskets from the many burrow pits throughout the Cahokia site.

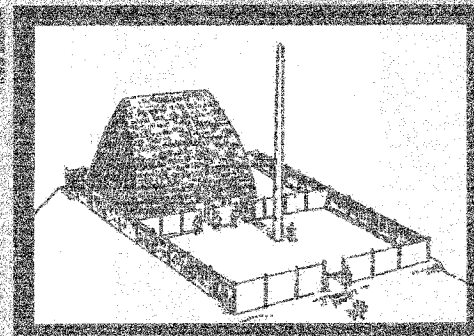
It was not built all at once, but in a series of stages, mostly from AD 950-1200. Core-drillings through the mound suggest eight to 14 building stages. Excavations at various locations found indications of a stairway on the South Ramp, several buildings and a small mound rebuilt eight times on the First Terrace; a large temple structure on the Fourth Terrace; evidence of a French chapel and historic Indian occupation (1730s) on the First Terrace; and the discovery of the Birdman Tablet on the east side of the mound.

Recent tests confirm that the First Terrace was a late addition to the front of the mound and drilling deep beneath the Second Terrace encountered a large mass of stone cobbles whose function is unknown at this time. The Mississippians were also doing soil engineering, sorting and placing specific soils for strength or drainage.

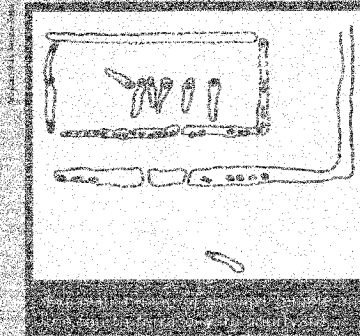
It is called Monks Mound because a group of French Trappist Monks lived on a nearby mound from 1809-1913 and planted gardens, fruit trees and wheat on the terraces of this mound.



- (A) South Ramp
- (B) First Terrace with mound and building
- (C) Second Terrace
- (D) Third Terrace
- (E) Fourth Terrace with large structure and marker post



The Fourth Terrace building was probably the residence of the leader and the religious/political focus of the urban center. A fenced courtyard with a flag post in the center enclosed the Fourth Terrace. In the 1830s, among other things, the earthworks on the Third Terrace were removed, a small mound in the southeast corner. It is buried on the northeast corner of the Fourth Terrace.



Mound Facts

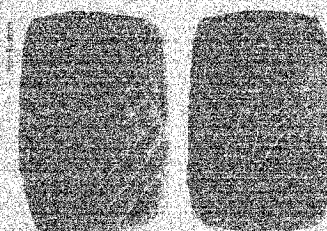
- The mound covers an area of over 14 acres and is 100 feet at the highest point.
- It contains 22 million cubic feet of earth.
- The building on the top terrace measured 54 feet by 114 feet and possibly 80 feet high.
- Construction of the mound began around AD 950 and it was enlarged several times until AD 1200.

Site Trail Guide



This mound is finished in several stages. The French Trappist Monks lived on a nearby mound from 1809-1913 and planted gardens, fruit trees and wheat on the terraces of this mound.

The pattern of the mound and the structure on the top terrace were from the end of the 19th century. Among other things, the earthworks on the Third Terrace were removed, a small mound in the southeast corner. It is buried on the northeast corner of the Fourth Terrace.



The "Birdman Tablet" was discovered in excavations on the east side of Monks Mound in 1971. The front side of this engraved sandstone tablet depicts a man in a falcon dancer outfit, with a beaked mask and wings; the reverse side has a cross-hatched diamond pattern representing a snake.



The pattern of the mound and the structure on the top terrace were from the end of the 19th century. Among other things, the earthworks on the Third Terrace were removed, a small mound in the southeast corner. It is buried on the northeast corner of the Fourth Terrace.

DISTRICT PROJECT ENGINEER - LANCE KIDD

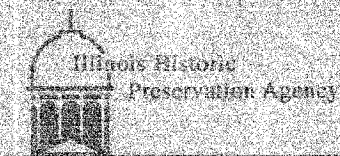
REVISIONS	
NAME	DATE

ILLINOIS DEPARTMENT OF TRANSPORTATION
SIGN GRAPHICS 5
IDNR / IHPA STATEWIDE
SIDEWALK IMPROVEMENTS
CAHOKIA MOUNDS STATE
HISTORIC SITE
SCALE: NTS
DATE: 2-26-07
DRAWN BY: EJR
CHECKED BY: GWW



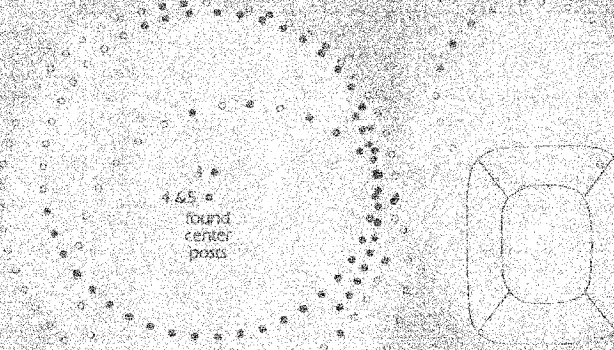
Woodhenge

A prehistoric solar calendar



Cahokia Mounds State Historic Site

The 5 Woodhenge circles and identified center points

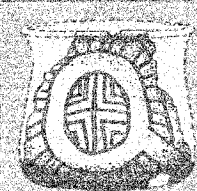
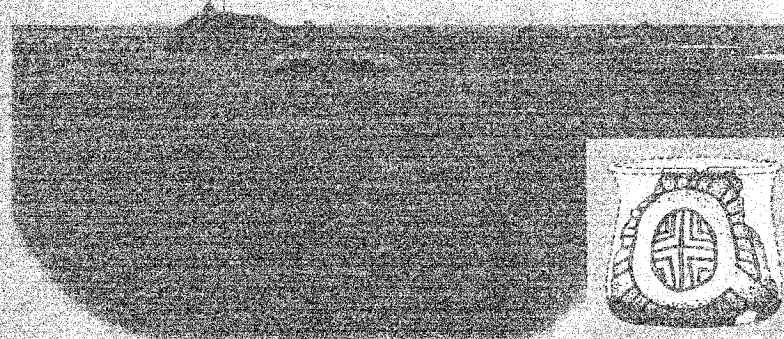


Circle Sequence	Diameter in feet	# of Posts
Woodhenge I	240	24
Woodhenge II	408	36
Woodhenge III	410	48 (reconstructed in its original location)
Woodhenge IV	476	60
Woodhenge V	440	12 (in the sun beam)
confirmed post		(but if complete should be 72)
projected post		

Site Trail Guide



NOTES:
FULL-COLOR, ELECTRONIC FILE GRAPHICS WILL BE MADE AVAILABLE TO CONTRACTOR FOR EMBEDDED FIBERGLASS SIGN PRODUCTION.



Drawing of a reconstructed boat from fragments found in a pit near the winter solstice pole. Its symbols represent the sun, the rising line, earth, and the four directions (circle and cross).

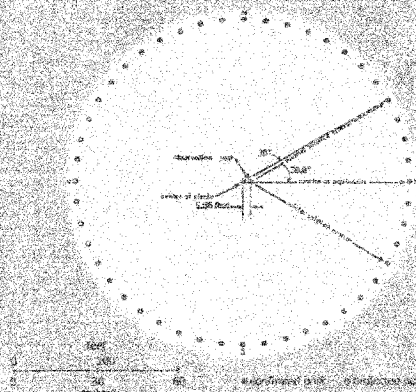
At least five large post-circle monuments were built at this location from AD 1100 to 1200, each with a different diameter and number of posts. Woodhenge III is the circle most extensively excavated and is the one reconstructed here, in the original location. The posts on the west side are missing as that area was destroyed by a highway borrow pit before the existence of Woodhenge was known.

The sun rising above the bluffs to the east aligns with certain posts on the perimeter, as viewed from the central observation post. The most important alignments are the winter and summer solstices, marking the southernmost and northernmost sunrise positions, and the fall and spring equinoxes, when the sun rises due east, midway between the solstice posts. Also, at the equinoxes the rising sun appears to emerge from the front of Monk's Mound, perhaps confirming a link between the sun and the chief who ruled from the top of the mound.

The excavations also revealed hundreds of holes and pits, showing this was a residential area before and after the construction of the Woodhenges. Fragments of wood in some of the holes indicate that red cedar, a sacred wood for most Indians, was used for the posts.



Excavations and studies with the observation post held at the "Solstice position" caused the observer to see events in that same place, but able to stand and read about the solar calendar alignments.



Woodhenge III was reconstructed at its original site. Observer's post was placed east of center post to form an angle of 20.8 degrees needed to sight solstices at ground level.

REVISIONS	
NAME	DATE

ILLINOIS DEPARTMENT OF TRANSPORTATION

SIGN GRAPHICS 6

IDNR / IHPA STATEWIDE SIDEWALK IMPROVEMENTS CAHOKIA MOUNDS STATE HISTORIC SITE

SCALE: NTS
DATE: 2-26-07

DRAWN BY: EJR
CHECKED BY: GWV