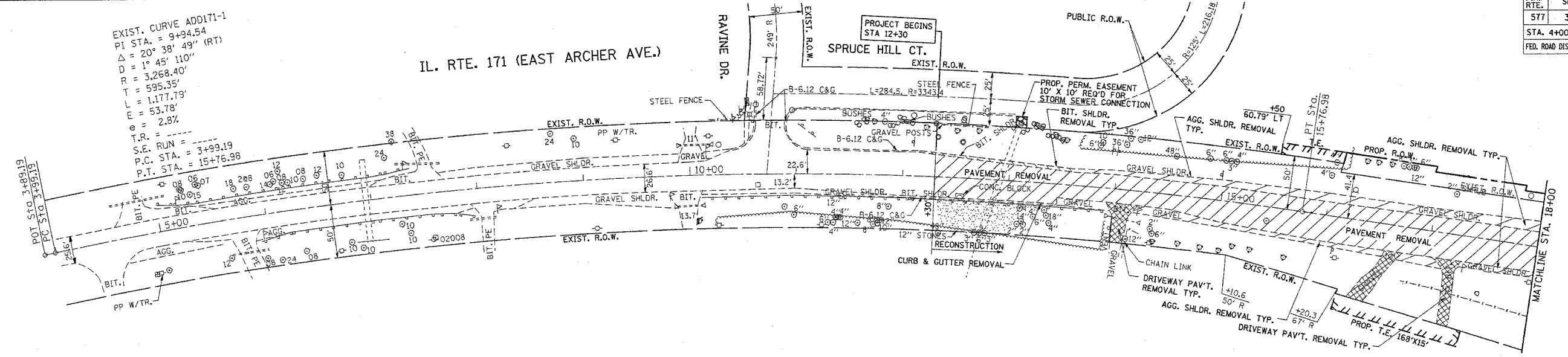


F.A.P. RTE.	SECTION	COUNTY	TOTAL SHEETS	SHEET NO.
577	3114 N-1	COOK	72	12
STA. 4+00		TO STA. 18+00		
FED. ROAD DIST. NO.		ILLINOIS FED. AID PROJECT		

EXIST. CURVE ADD171-1
 PI STA. = 9+94.54
 $\Delta = 20^\circ 38' 49''$ (RT)
 $D = 1^\circ 45' 11''$
 $R = 3,268.40'$
 $T = 595.35'$
 $L = 1,177.79'$
 $E = 53.78'$
 $e = 2.8\%$
 $T.R. =$
 $S.E. RUN = 3+99.19$
 $P.C. STA. = 15+76.98$
 $P.T. STA. = 15+76.98$

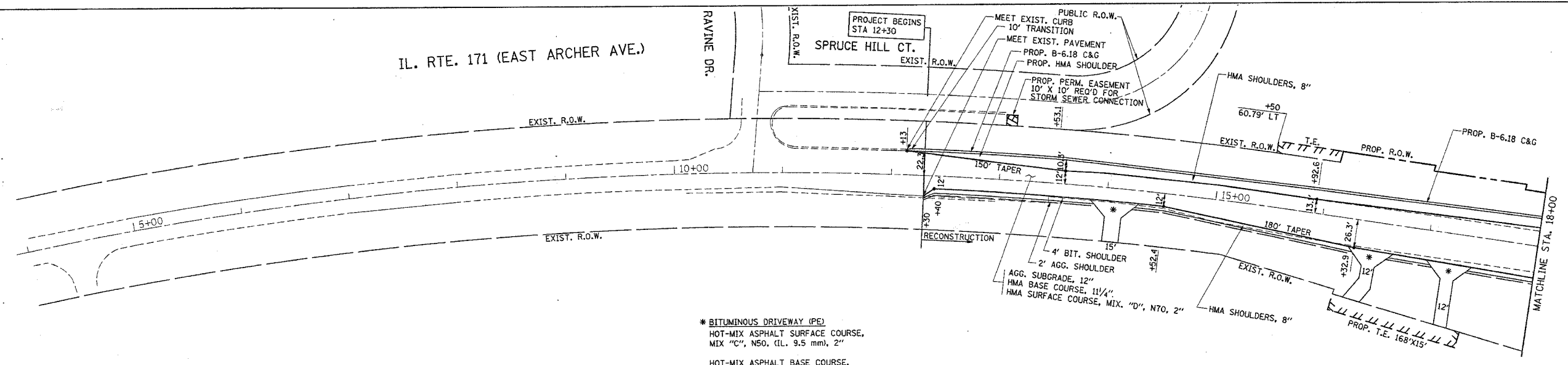
IL. RTE. 171 (EAST ARCHER AVE.)

PROJECT BEGINS STA 12+30
 SPRUCE HILL CT.
 EXIST. R.O.W.

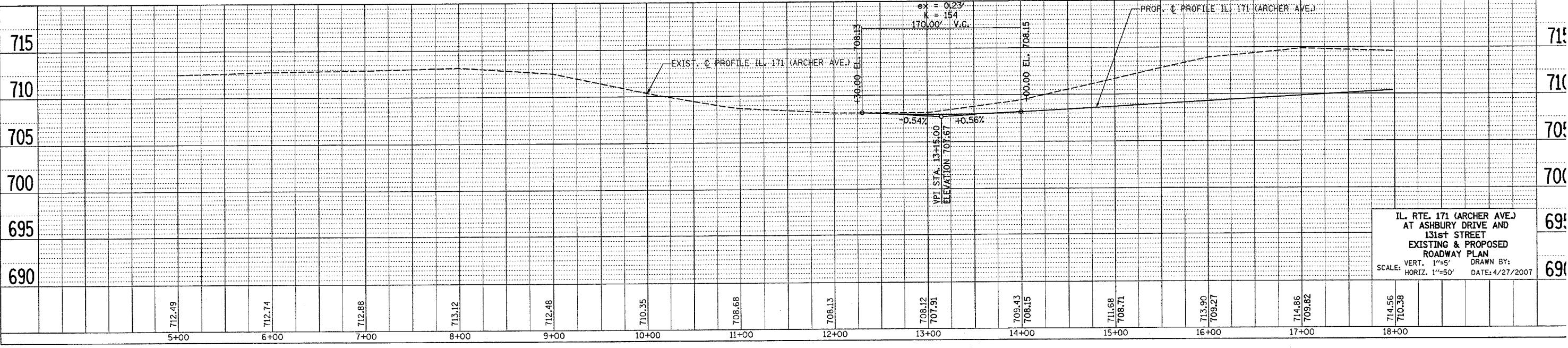


IL. RTE. 171 (EAST ARCHER AVE.)

PROJECT BEGINS STA 12+30
 SPRUCE HILL CT.
 EXIST. R.O.W.



* BITUMINOUS DRIVEWAY (PE)
 HOT-MIX ASPHALT SURFACE COURSE,
 MIX "C", NS0, (IL. 9.5 mm), 2"
 HOT-MIX ASPHALT BASE COURSE,
 (HMA BINDER IL-19 mm), 6"



IL. RTE. 171 (ARCHER AVE.)
 AT ASHBURY DRIVE AND
 131st STREET
 EXISTING & PROPOSED
 ROADWAY PLAN
 SCALE: VERT. 1"=5'
 HORIZ. 1"=50' DATE: 4/27/2007

PLAN	DATE	BY
REVISIONS		
NO. 1		
NO. 2		
NO. 3		
NO. 4		
NO. 5		
NO. 6		
NO. 7		
NO. 8		
NO. 9		
NO. 10		

PROFILE	DATE	BY
REVISIONS		
NO. 1		
NO. 2		
NO. 3		
NO. 4		
NO. 5		
NO. 6		
NO. 7		
NO. 8		
NO. 9		
NO. 10		

PLOT DATE = 4/27/2007
 FILE NAME = C:\pwork\60a25\115862\ah-dwg\pdrn
 USER NAME = [Name]