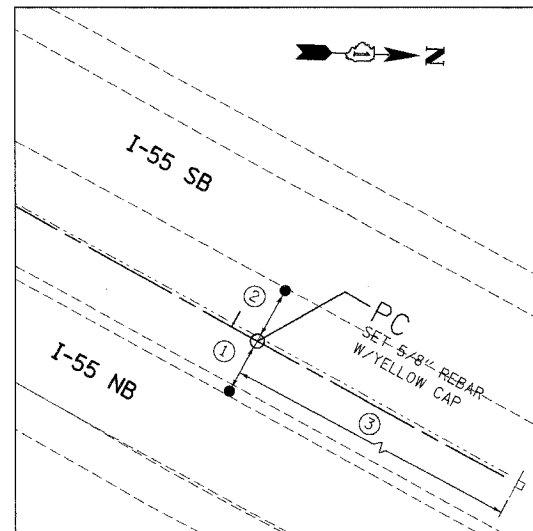
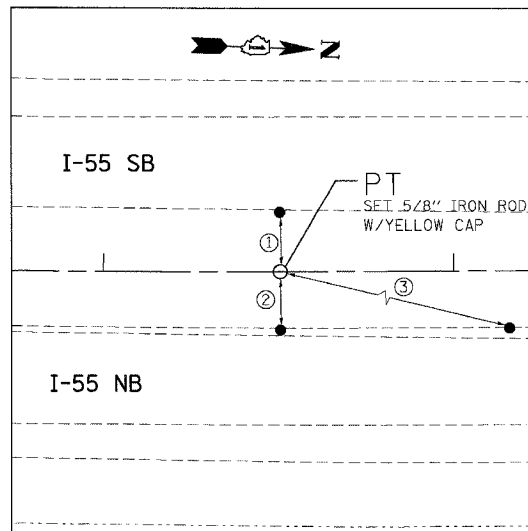


F.A.I. RTE.	SECTION	COUNTY	TOTAL SHEETS	SHEET NO.
55	99 (1&2) WRS-2	WILL	228	28
STA.		TO STA.		
FED. ROAD DIST. NO.		ILLINOIS	FED. AID PROJECT	



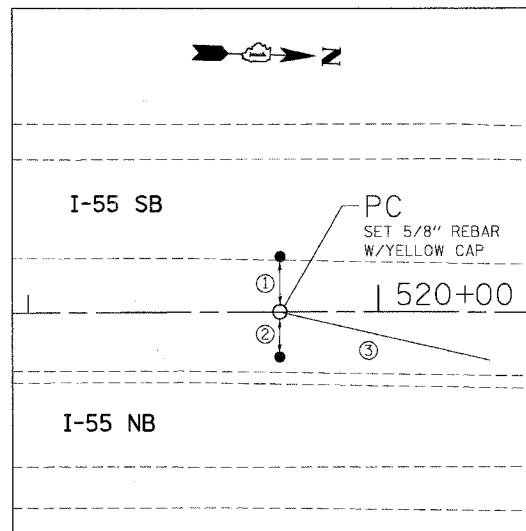
PC STA. 384+08.43

- ① PK NAIL, W. E.P. SHLDR ON NB, 16.39'
- ② PK NAIL, E. E.P. SHLDR ON SB, 16.44'
- ③ PK NAIL, E. FACE OF WD POST, 160.77'



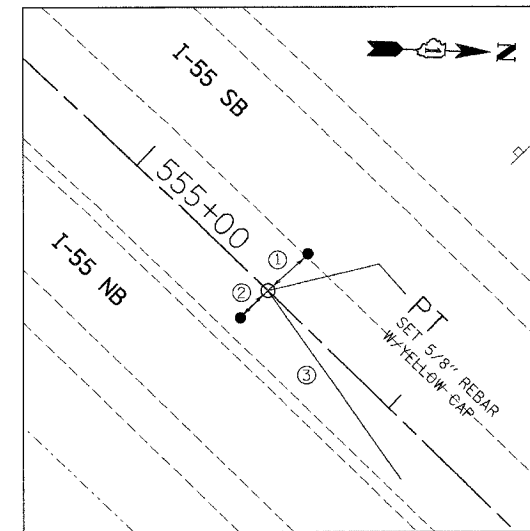
PT STA. 413+50.50

- ① PK NAIL, E. E.P. OF SHLDR ON SB I-55 OPPOSITE P.T., 17.305'
- ② PK NAIL, W. E.P. OF SHLDR ON NB I-55 OPPOSITE P.T., 16.747'
- ③ PK NAIL, W. E.P. OF SHLDR ON NB I-55 OPPOSITE SURFACE DRAIN TO CENTER MEDIAN, 130.54'



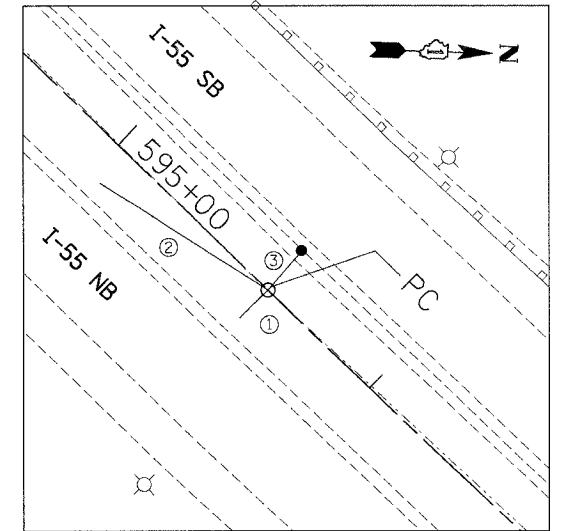
PC STA. 519+71.86

- ① PK NAIL, SHLDR E.P. OF SB I-55, 15.964'
- ② PK NAIL, ON TOP OF POST SPACER TO GR W, 12.796'
- ③ PK NAIL, ON 10TH I-BEAM N. OF TIE # 2, 61.467'



PT STA. 555+51.97

- ① PK NAIL, E. E.P. SB I-55 OPP. P.T., 15.601'
- ② PK NAIL, TOP OF WD. POST SPACER ON GR., 11.095'
- ③ PK NAIL, ON 10TH WD. POST SPACER ON GR NE'LY OF TIE # 2, 65.809'



PC STA. 595+59.70

- ① PK NAIL, ON TOP OF WD. SPACER TO GR. W. SIDE OF NB I-55, 11.215'
- ② PK NAIL, ON TOP OF WD. SPACER TO GR ON 10TH POST S. OF TIE # 1, 56.874'
- ③ PK NAIL, E.P. TO SHLDR OF SB I-55, 15.493'

PLOT DATE = 02/23/07
 FILE NAME = 022307.DWG
 PLOT SCALE = 1/8"=1'-0"
 USER NAME = 022307

PLOT DATE = 02/23/07
 FILE NAME = 022307.DWG
 PLOT SCALE = 1/8"=1'-0"
 USER NAME = 022307

REVISIONS	
NAME	DATE

ILLINOIS DEPARTMENT OF TRANSPORTATION
 FAI ROUTE 55 (BLACK ROAD TO U.S. 30)
 WIDENING AND RESURFACING

ALIGNMENT, TIES AND BENCHMARKS III

SCALE: N.T.S. DRAWN BY SB

DATE 02/23/07 CHECKED BY DDH

TENG TENG & ASSOCIATES, INC.
ENGINEERS/ARCHITECTS/PLANNERS
CHICAGO, ILLINOIS