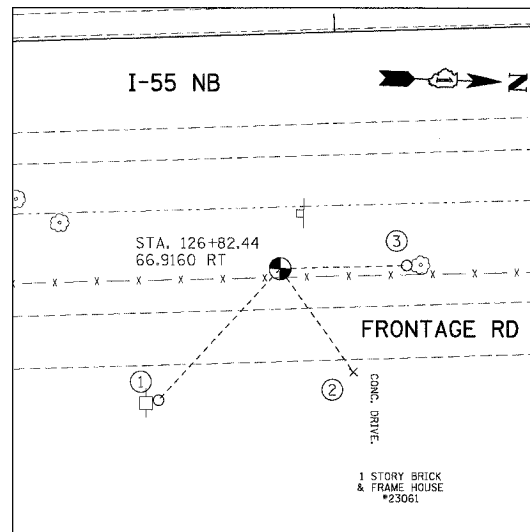
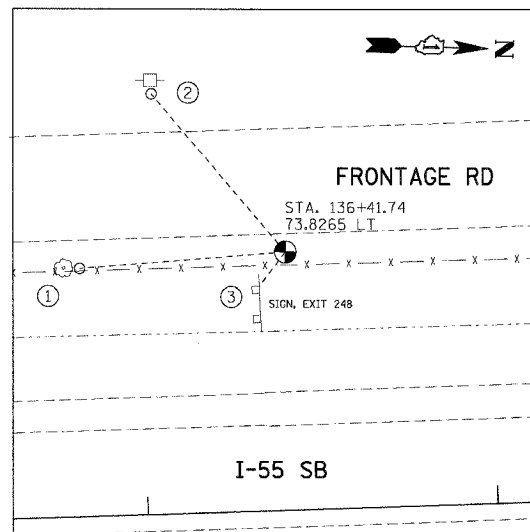


F.A.I. RTE.	SECTION	COUNTY	TOTAL SHEETS	SHEET NO.
55	99 (1&2) WRS-2	WILL.	228	29
STA.		TO STA.		
FED. ROAD DIST. NO.		ILLINOIS FED. AID PROJECT		



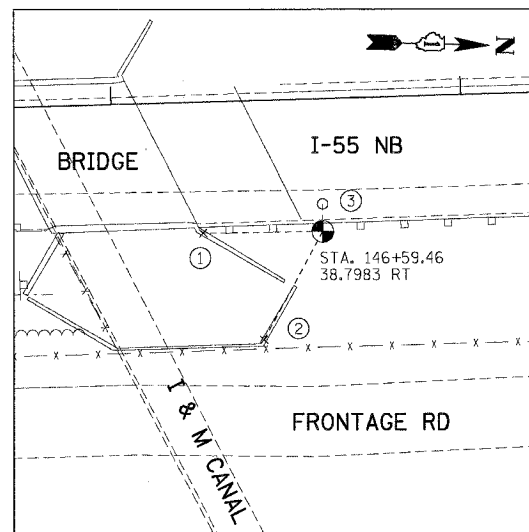
TP1

- (N 1747171.665, E 1021895.312, ELEV. 537.694)
- ① PK NAIL ON WEST FACE OF POWER POLE, 70.70'
 - ② CUT CROSS IN CONC. DRIVEWAY, 52.12'
 - ③ PK NAIL ON SOUTH FACE OF 12" TREE, 36.18'



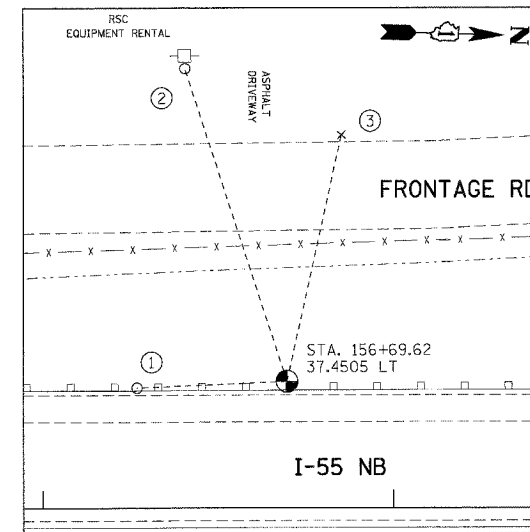
TP2

- (N 1748118.259, E 1021602.430, ELEV. 527.049)
- ① PK NAIL ON EAST FACE OF 10" TREE, 44.45'
 - ② PK NAIL ON WEST FACE OF POWER POLE, 59.00'
 - ③ NEAREST CORNER OF SIGN POST, 12.30'



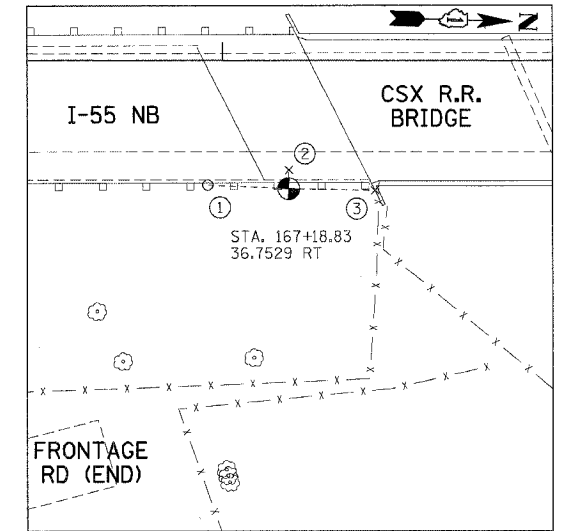
TP3

- (N 1749143.319, E 1021747.490, ELEV. 536.290)
- ① CUT CROSS ON TOP OF CONC. WALL, 34.20'
 - ② CUT CROSS ON TOP OF CONC. WALL, 35.25'
 - ③ PK NAIL IN ASPH. SHOULDER, 7.86'



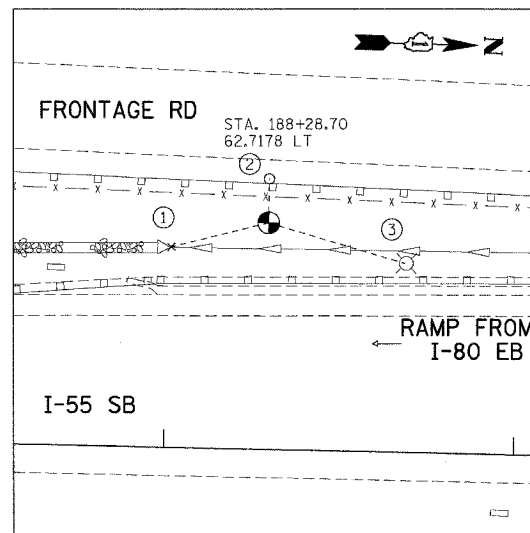
TP4

- (N 1750146.468, E 1021525.206, ELEV. 558.007)
- ① PK NAIL IN ASPHALT, 42.86'
 - ② PK NAIL ON EAST FACE OF POWER POLE, 93.72'
 - ③ CUT CROSS ON TOP OF CONC. CURB, 71.98'



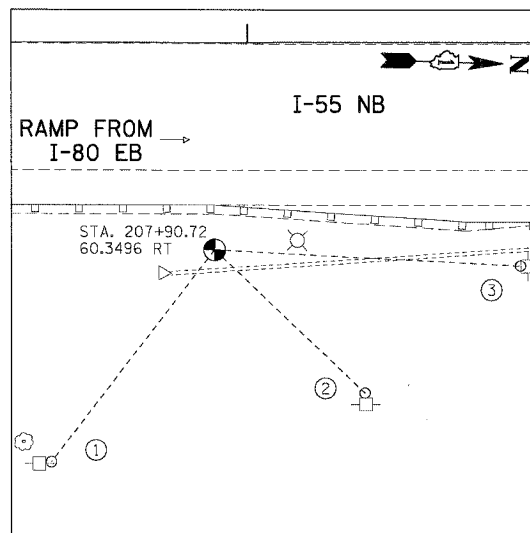
TP5

- (N 1751199.973, E 1021668.568, ELEV. 577.182)
- ① PK NAIL IN ASPHALT, 23.15'
 - ② CUT CROSS IN BRIDGE DECK, 5.35'
 - ③ CUT CROSS ON TOP OF WINGWALL, 24.65'



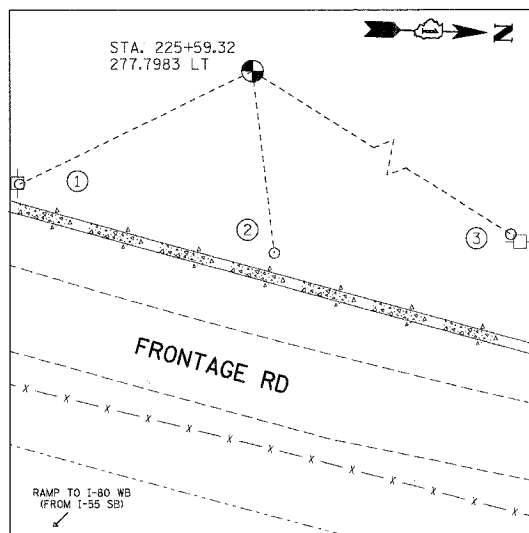
TP6

- (N 1753305.294, E 1021429.772, ELEV. 573.834)
- ① CUT CROSS ON TOP OF RCP 40", 28.60'
 - ② PK NAIL IN ASPHALT, 12.50'
 - ③ SOUTH FACE OF LIGHT POLE, 40.50'



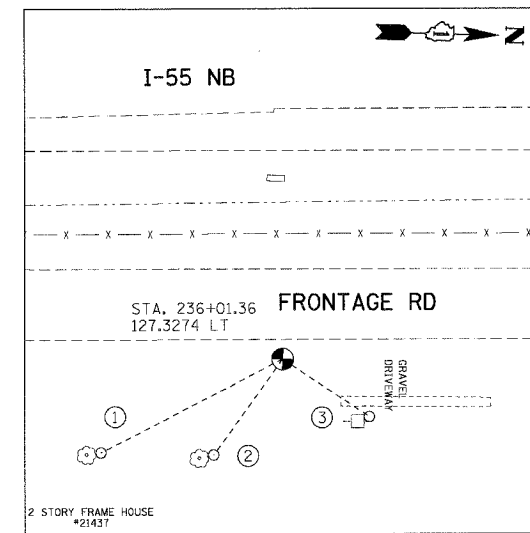
TP7

- (N 1755270.636, E 1021567.644, ELEV. 585.682)
- ① PK NAIL ON NORTH FACE OF POWER POLE, 76.45'
 - ② PK NAIL ON WEST FACE OF POWER POLE, 59.20'
 - ③ PK NAIL ON SOUTH FACE OF POWER POLE, 87.50'



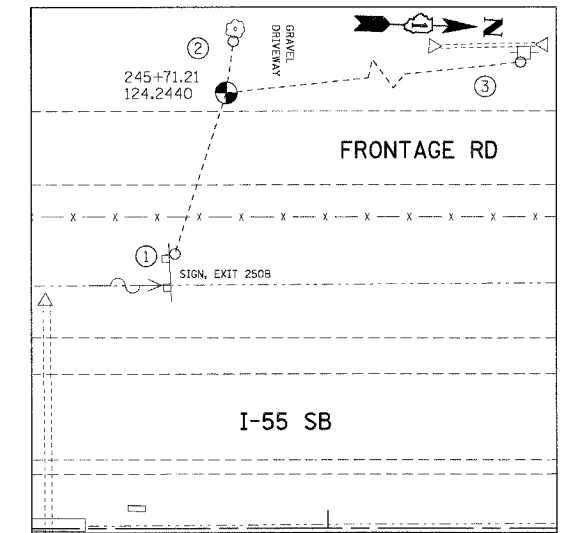
TP8

- (N 1757027.413, E 1021155.818, ELEV. 595.624)
- ① PK NAIL ON NORTH FACE OF POWER POLE, 74.05'
 - ② WILLTEL STAND. PIPE, 52.34'
 - ③ PK NAIL ON SOUTH FACE OF POWER POLE, 139.20'



TP9

- (N 1758081.471, E 1021528.564, ELEV. 589.434)
- ① PK NAIL ON NORTH FACE OF 14" TREE, 58.37'
 - ② PK NAIL ON NORTH FACE OF 24" TREE, 33.75'
 - ③ PK NAIL ON NORTH FACE OF POWER POLE, 29.65'



TP10

- (N 1759043.088, E 1021247.156, ELEV. 591.034)
- ① NEAREST CORNER OF SIGN POST, 48.17'
 - ② PK NAIL ON EAST FACE OF 26" TREE, 14.90'
 - ③ PK NAIL ON EAST FACE OF POWER POLE, 161.26'

NOTE:
ALL CONTROL POINTS ON THIS SHEET WERE SET WITH 2" IRON ROD WITH YELLOW CAP

REVISIONS	
NAME	DATE

ILLINOIS DEPARTMENT OF TRANSPORTATION
FAI ROUTE 55 (BLACK ROAD TO U.S. 30)
WIDENING AND RESURFACING

ALIGNMENT, TIES AND BENCHMARKS IV

SCALE: N.T.S. DRAWN BY SB
DATE 02/23/07 CHECKED BY DDH

TENG TENG & ASSOCIATES, INC.
ENGINEERS/ARCHITECTS/PLANNERS
CHICAGO, ILLINOIS

PLOT DATE = 02/23/07
 FILE NAME = 02FILE4
 PLOT SCALE = 6SCALE#
 USER NAME = #USER#
 S:\DOCUMENT\02291509\CIVIL\DDH\T881A065.DWG
 2-28-2007 1:04:00 PM