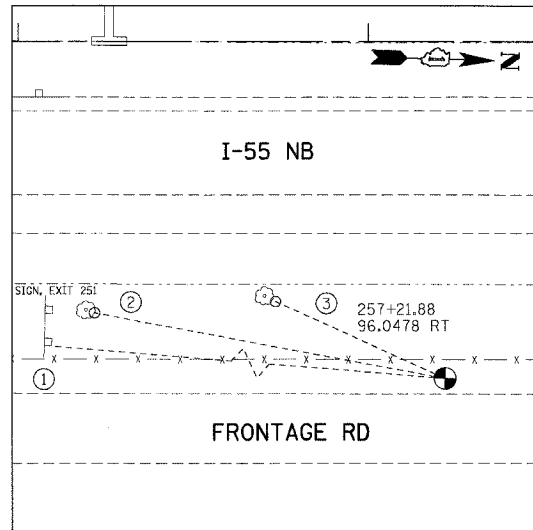
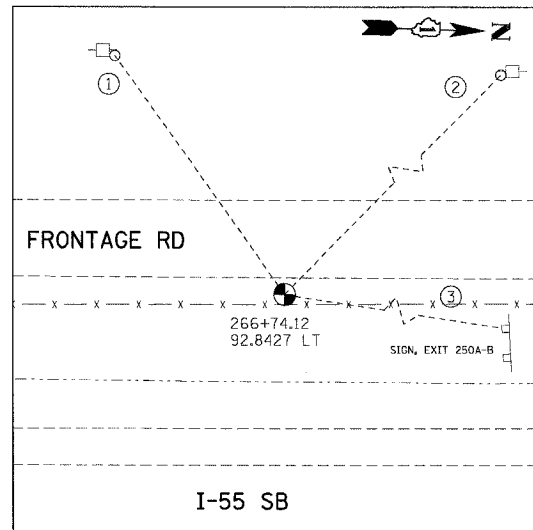


F.A.I. RTE.	SECTION	COUNTY	TOTAL SHEETS	SHEET NO.
55	99 (I&2) WRS-2	WILL	228	30
STA.	TO STA.			
FED. ROAD DIST. NO.	ILLINOIS FED. AID PROJECT			



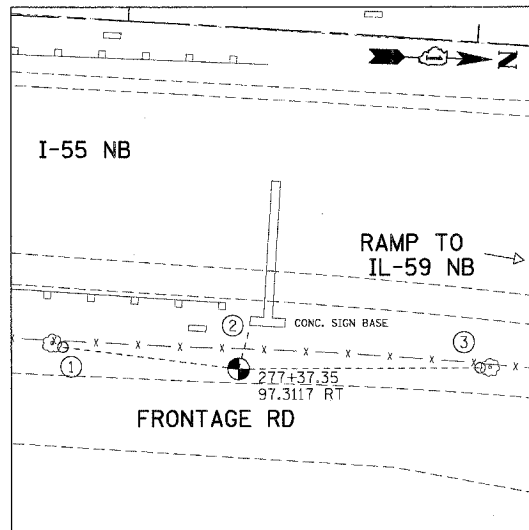
TP11

- (N 1760200.014, E 1021431.801, ELEV. 586.597)
- ① NEAREST CORNER OF SIGN POST, 318.80'
  - ② PK NAIL ON NORTH FACE OF 10" TREE, 101.80'
  - ③ PK NAIL ON NORTH FACE OF 12" TREE, 53.14'



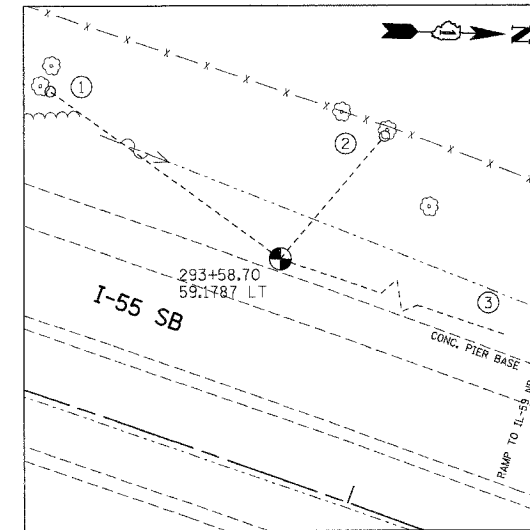
TP12

- (N 1761145.966, E 1021213.588, ELEV. 590.855)
- ① PK NAIL ON NORTH FACE OF POWER POLE, 83.45'
  - ② PK NAIL ON SOUTH FACE OF POWER POLE, 179.20'
  - ③ NEAREST CORNER OF SIGN POST, 227.45'



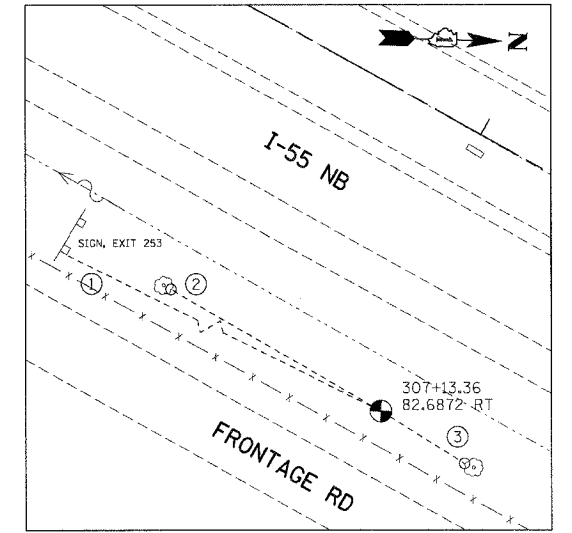
TP13

- (N 1762208.792, E 1021381.377, ELEV. 596.094)
- ① PK NAIL ON NORTH FACE OF 14" TREE, 50.53'
  - ② NEAREST CORNER OF CONC. SIGN BASE, 12.20'
  - ③ PK NAIL ON EAST FACE OF 16" TREE, 68.97'



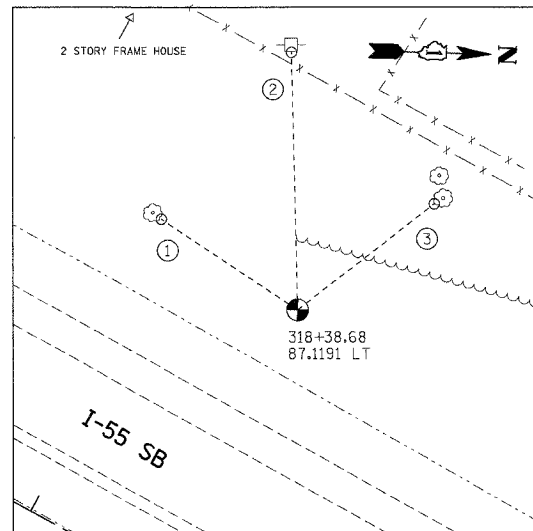
TP14

- (N 1763822.452, E 1021501.351, ELEV. 596.851)
- ① PK NAIL ON NORTH FACE OF 12" TREE, 81.23'
  - ② PK NAIL ON EAST FACE OF 12" TREE, 45.72'
  - ③ CORNER OF CONC. PIER BASE, 274.15'



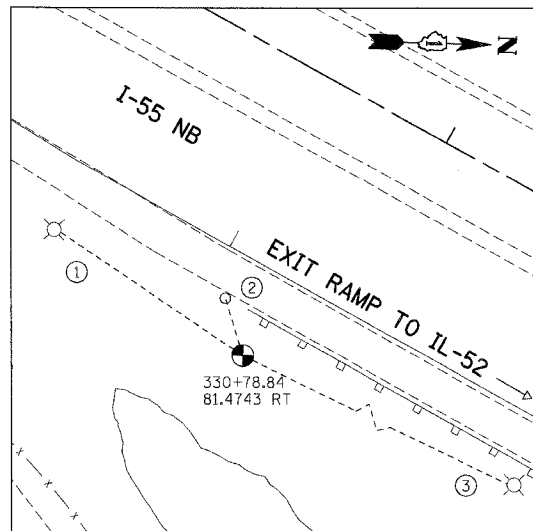
TP15

- (N 1765002.134, E 1022180.735, ELEV. 597.966)
- ① NEAREST CORNER OF SIGN POST, 134.40'
  - ② PK NAIL ON NORTH FACE OF 10" TREE, 69.33'
  - ③ PK NAIL ON SOUTH FACE OF 6" TREE, 28.16'



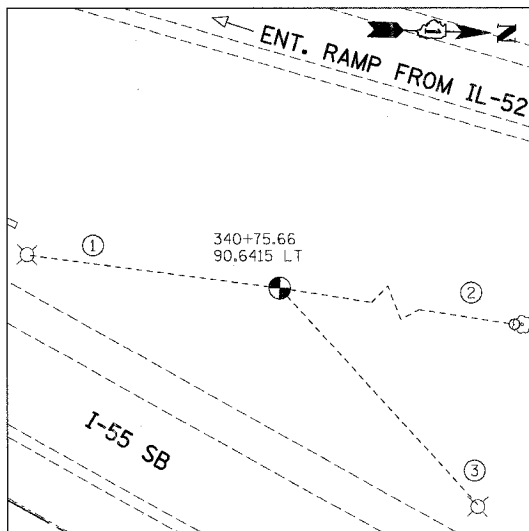
TP16

- (N 1766079.260, E 1022548.112, ELEV. 601.281)
- ① PK NAIL ON NORTH FACE OF 12" TREE, 46.70'
  - ② PK NAIL ON EAST FACE OF POWER POLE, 73.70'
  - ③ PK NAIL ON EAST FACE OF 48" TREE, 49.40'



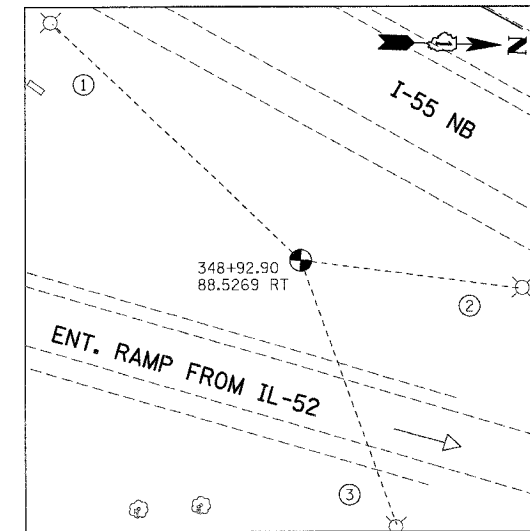
TP17

- (N 1767102.532, E 1023268.763, ELEV. 580.810)
- ① NEAREST FACE OF LIGHT POLE, 62.45'
  - ② PK NAIL IN ASPHALT, 17.10'
  - ③ NEAREST FACE OF LIGHT POLE, 109.30'



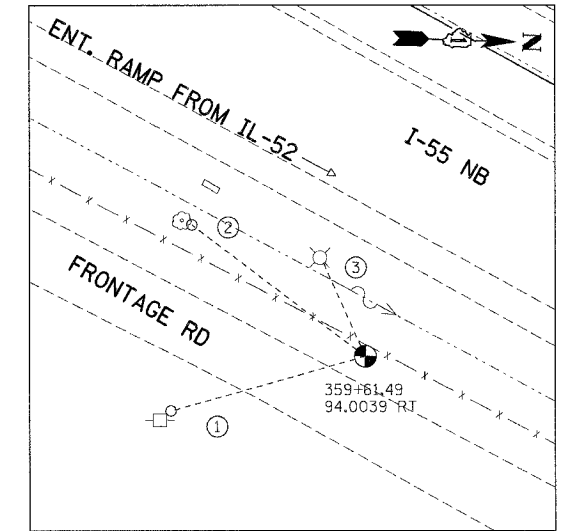
TP18

- (N 1768066.661, E 1023574.931, ELEV. 582.146)
- ① NEAREST FACE OF LIGHT POLE, 72.60'
  - ② PK NAIL ON SOUTH FACE OF 32" TREE, 128.60'
  - ③ NEAREST FACE OF LIGHT POLE, 83.55'



TP19

- (N 1768709.630, E 1024110.251, ELEV. 580.954)
- ① NEAREST FACE OF LIGHT POLE, 97.90'
  - ② NEAREST FACE OF LIGHT POLE, 63.85'
  - ③ NEAREST FACE OF LIGHT POLE, 80.10'



TP20

- (N 1769655.699, E 1024607.111, ELEV. 580.554)
- ① PK NAIL ON NW FACE OF POWER POLE, 57.60'
  - ② PK NAIL ON NORTH FACE OF 14" TREE, 62.10'
  - ③ NEAREST FACE OF LIGHT POLE, 30.40'

NOTE:  
ALL CONTROL POINTS ON THIS SHEET WERE SET WITH 2" IRON ROD WITH YELLOW CAP

REVISIONS	
NAME	DATE

ILLINOIS DEPARTMENT OF TRANSPORTATION  
FAI ROUTE 55 (BLACK ROAD TO U.S. 30)  
WIDENING AND RESURFACING

ALIGNMENT, TIES AND BENCHMARKS

SCALE: N.T.S. DRAWN BY SB  
DATE 02/23/07 CHECKED BY DDH

**TENG** TENG & ASSOCIATES, INC.  
ENGINEERS/ARCHITECTS/PLANNERS  
CHICAGO, ILLINOIS

PLOT DATE = 02/23/07  
 FILE NAME = #FILE#  
 PLOT SCALE = #SCALE#  
 USER NAME = #USER#  
 ..\B01914001.DGN, ..\B01914001.DGN, ..\B01914001.DGN, ..\B01914001.DGN, ..\B01914001.DGN  
 2-20-2007, 10:46:37 GRICHAZ S:\DOCUMENTS\2007\02\20\B01914001.DGN