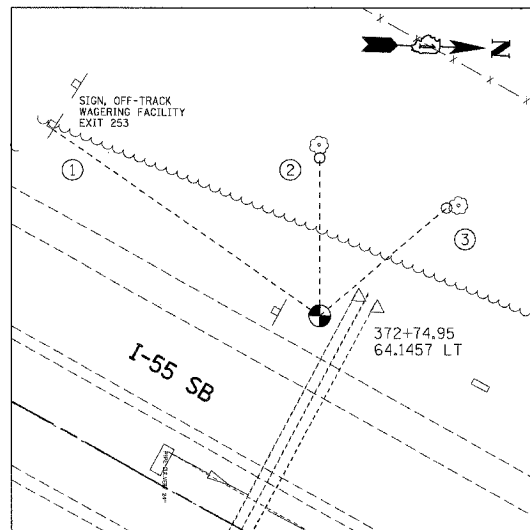
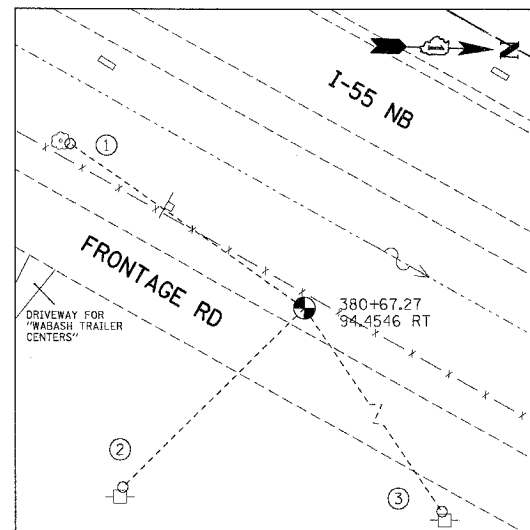


F.A.I. RTE.	SECTION	COUNTY	TOTAL SHEETS	SHEET NO.
55 99 (1&2)	WRS-2	WILL	228	31
STA.		TO STA.		
FED. ROAD DIST. NO.	ILLINOIS	FED. AID PROJECT		



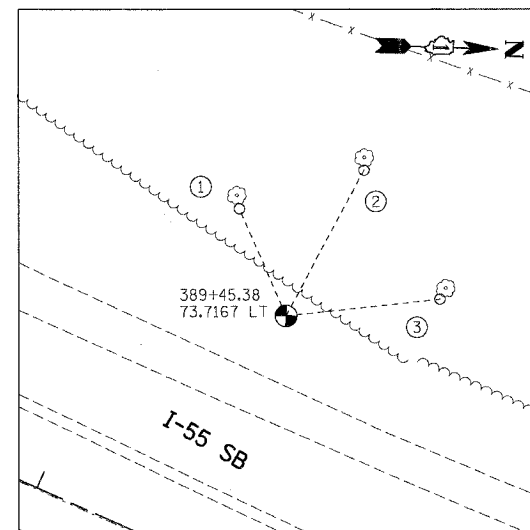
TP21

- (N 1770894.475, E 1025071.461, ELEV. 580.457)
 ① NEAREST CORNER OF SIGN POST, 94.35'
 ② PK NAIL ON WEST FACE OF 12" TREE, 45.05'
 ③ PK NAIL ON SOUTH FACE OF 14" TREE, 47.50'



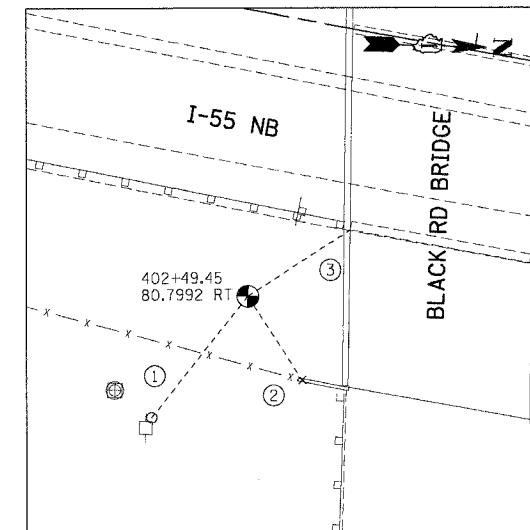
TP22

- (N 1771524.797, E 1025577.049, ELEV. 581.842)
 ① PK NAIL ON NORTH FACE OF 16" TREE, 81.65'
 ② PK NAIL ON WEST FACE OF POWER POLE, 72.95'
 ③ PK NAIL ON WEST FACE OF POWER POLE, 143.05'



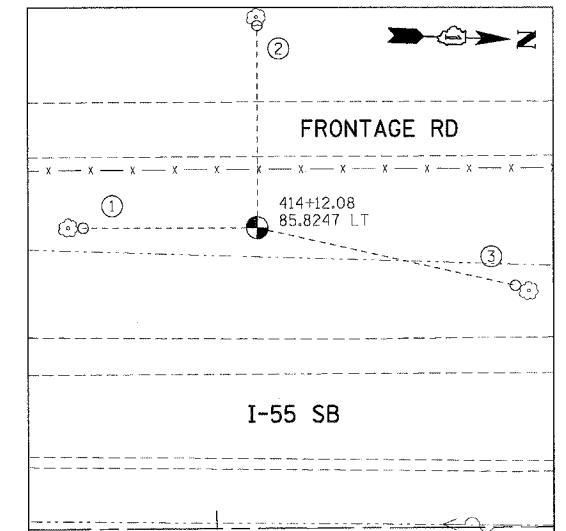
TP23

- (N 1772386.338, E 1025806.470, ELEV. 579.479)
 ① PK NAIL ON EAST FACE OF 16" TREE, 33.30'
 ② PK NAIL ON EAST FACE OF 12" TREE, 47.20'
 ③ PK NAIL ON EAST FACE OF 28" TREE, 44.20'



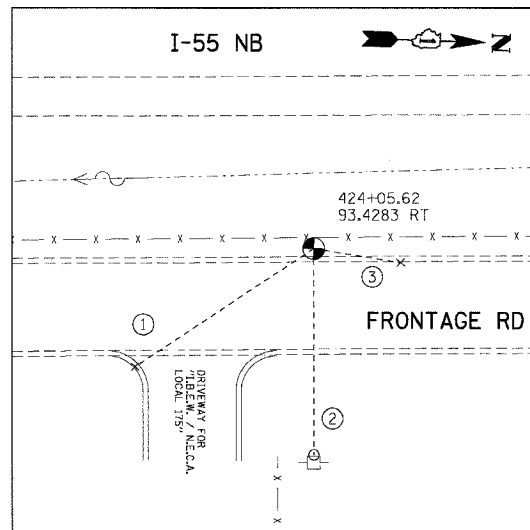
TP24

- (N 1773599.891, E 1026302.676, ELEV. 588.101)
 ① PK NAIL ON WEST FACE OF POWER POLE, 44.20'
 ② CUT CROSS ON TOP OF BRIDGE WING WALL, 28.60'
 ③ NEAREST CORNER OF CONCRETE PIER BASE, 34.80'



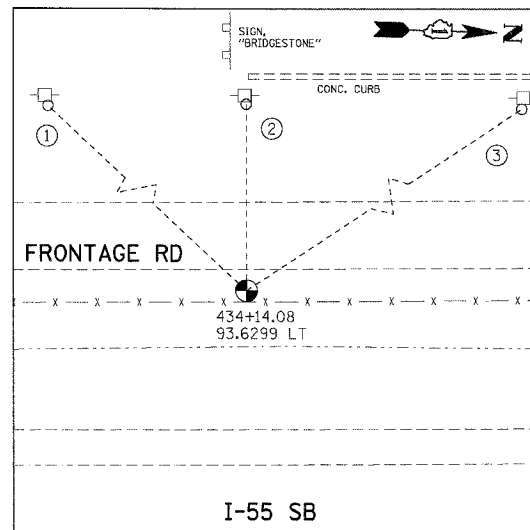
TP25

- (N 1774768.339, E 1026201.638, ELEV. 581.191)
 ① PK NAIL ON NORTH FACE OF 26" TREE, 49.70'
 ② PK NAIL ON WEST FACE OF 24" TREE, 60.70'
 ③ PK NAIL ON SOUTH FACE OF 14" TREE, 75.50'



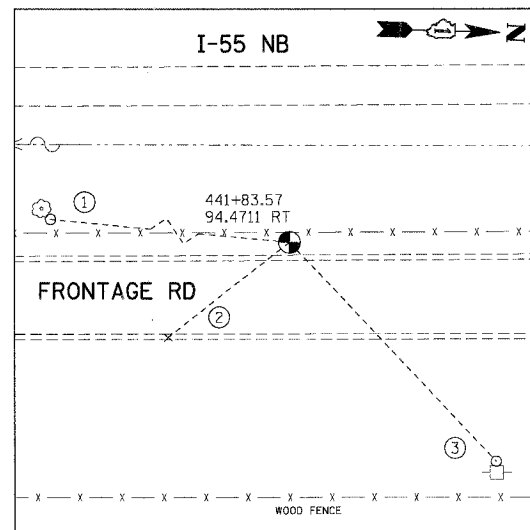
TP26

- (N 1775767.608, E 1026345.581, ELEV. 590.522)
 ① CUT CROSS SET ON TOP OF CURB, 61.10'
 ② PK NAIL ON WEST FACE OF POWER POLE, 58.80'
 ③ CUT CROSS SET ON TOP OF CURB, 25.10'



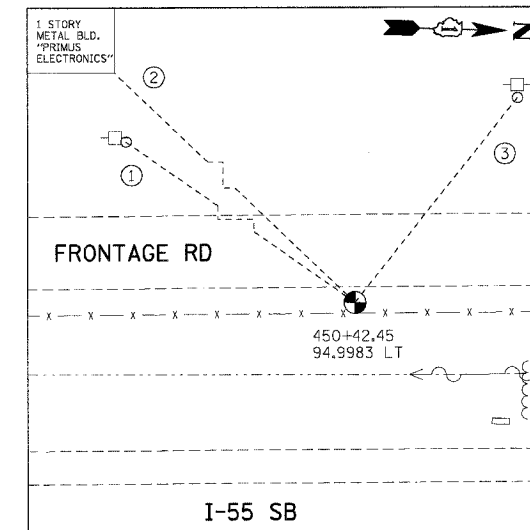
TP27

- (N 1776768.806, E 1026122.916, ELEV. 591.174)
 ① PK NAIL ON EAST FACE OF POWER POLE, 99.90'
 ② PK NAIL ON EAST FACE OF POWER POLE, 53.50'
 ③ PK NAIL ON EAST FACE OF POWER POLE, 121.63'



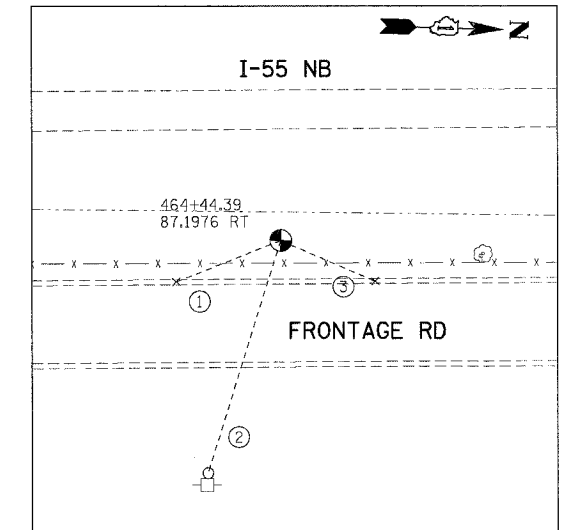
TP28

- (N 177544.478, E 1026283.640, ELEV. 598.777)
 ① PK NAIL ON EAST FACE OF 22" TREE, 117.40'
 ② CUT CROSS ON TOP OF CURB, 44.00'
 ③ PK NAIL ON WEST FACE OF POWER POLE, 85.90'



TP29

- (N 1778396.107, E 1026063.864, ELEV. 595.111)
 ① PK NAIL ON NORTH FACE OF POWER POLE, 161.41'
 ② NEAREST CORNER OF BUILDING, 260.10'
 ③ PK NAIL ON SURFACE OF POWER POLE, 74.90'



TP30

- (N 1779803.620, E 1026196.284, ELEV. 590.699)
 ① CUT CROSS ON TOP OF CURB, 32.10'
 ② PK NAIL ON WEST FACE OF POWER POLE, 69.30'
 ③ CUT CROSS ON TOP OF CURB, 29.40'

NOTE:
 ALL CONTROL POINTS ON THIS SHEET WERE
 SET WITH 2" IRON ROD WITH YELLOW CAP

REVISIONS	
NAME	DATE

ILLINOIS DEPARTMENT OF TRANSPORTATION
 FAI ROUTE 55 (BLACK ROAD TO U.S. 30)
 WIDENING AND RESURFACING

ALIGNMENT, TIES AND BENCHMARKS VI

SCALE: N.T.S. DRAWN BY SB
 DATE 02/23/07 CHECKED BY DDH

TENG
 TENG & ASSOCIATES, INC.
 ENGINEERS/ARCHITECTS/PLANNERS
 CHICAGO, ILLINOIS

PLOT DATE = 02/23/07
 FILE NAME = 022307.DWG
 PLOT SCALE = 1"=40'
 USER NAME = RUBEN