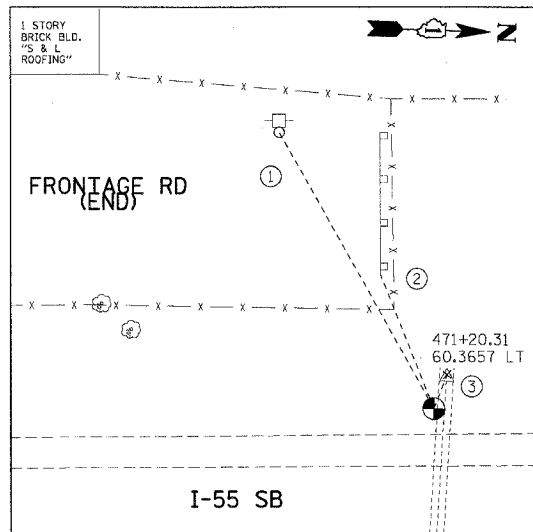
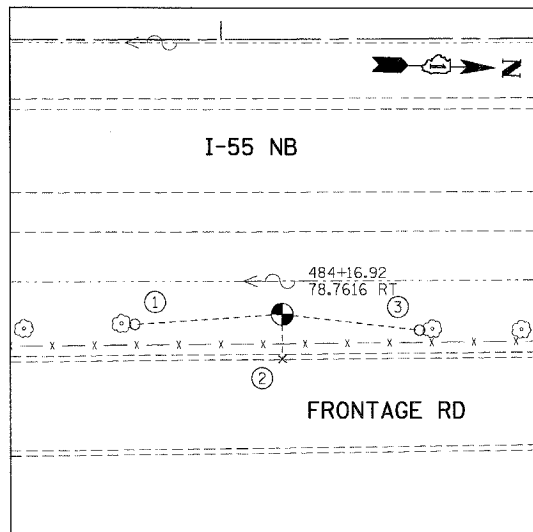


F.A.I. RTE.	SECTION	COUNTY	TOTAL SHEETS	SHEET NO.
55	99 (1&2) WRS-2	WILL	228	32
STA.		TO STA.		
FED. ROAD DIST. NO.		ILLINOIS	FED. AID PROJECT	



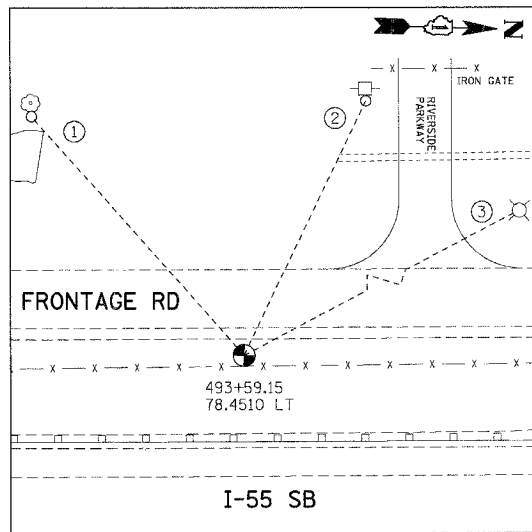
TP31

- (N 1780473.889, E 1026024.869, ELEV. 590.948)  
 ① PK NAIL ON EAST FACE OF POWER POLE, 90.30'  
 ② EAST END OF GUARDRAIL, 40.90'  
 ③ CROSS CUT ON TOP OF CULVERT (48" RCP), 10.30'



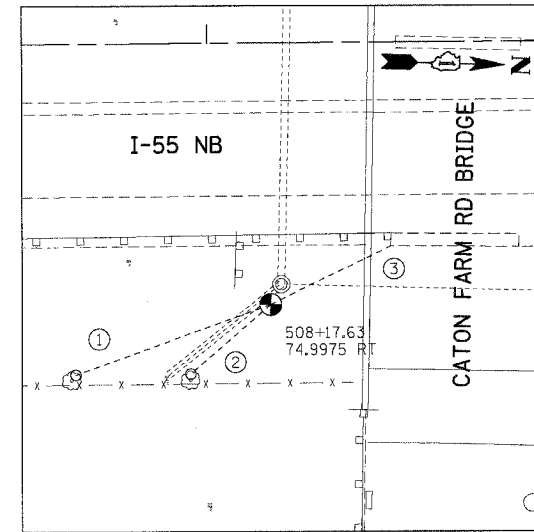
TP32

- (N 1781774.617, E 1026117.977, ELEV. 590.111)  
 ① PK NAIL ON NORTH FACE OF 14" TREE, 42.10'  
 ② CROSS CUT ON TOP OF CURB, 12.70'  
 ③ PK NAIL ON SOUTH FACE OF 14" TREE, 39.35'



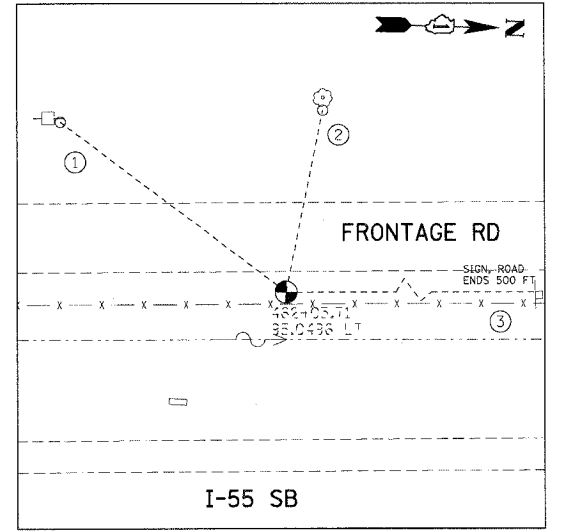
TP33

- (N 1782710.684, E 1025927.485, ELEV. 593.501)  
 ① PK NAIL ON EAST FACE OF 14" TREE, 91.21'  
 ② PK NAIL ON EAST FACE OF POWER POLE, 80.63'  
 ③ NEAREST FACE OF LIGHT POLE, 123.90'



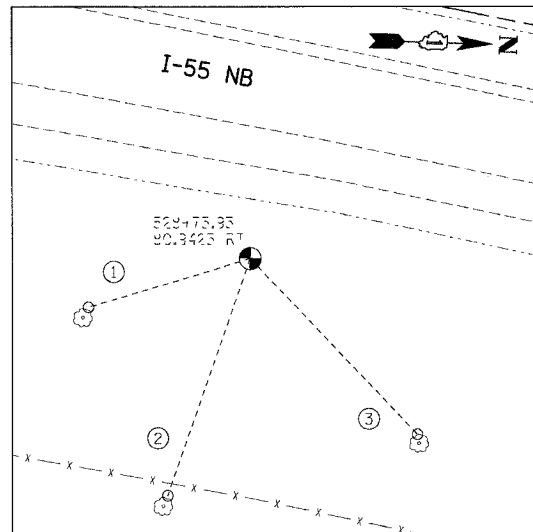
TP34

- (N 1784173.688, E 1026029.171, ELEV. 594.050)  
 ① PK NAIL ON WEST FACE OF 10" TREE, 58.95'  
 ② PK NAIL ON WEST FACE OF 16" TREE, 30.10'  
 ③ NEAREST CORNER OF CONC. PIER BASE, 38.40'



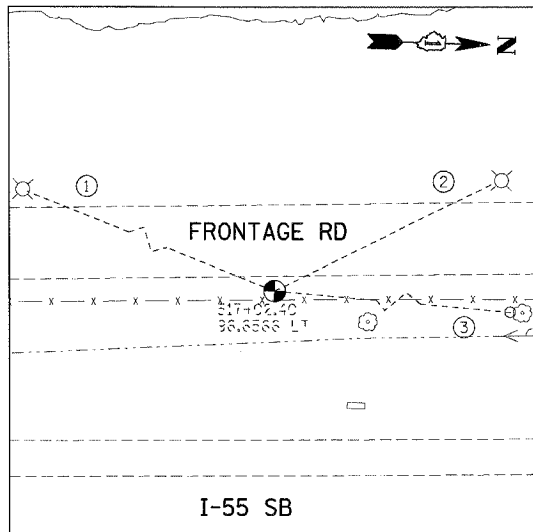
TP35

- (N 1779556.639, E 1026022.677, ELEV. 591.351)  
 ① PK NAIL ON NORTH FACE OF POWER POLE, 80.45'  
 ② PK NAIL ON EAST FACE OF 8" TREE, 63.00'  
 ③ NEAREST CORNER OF SIGN POST, 232.20'



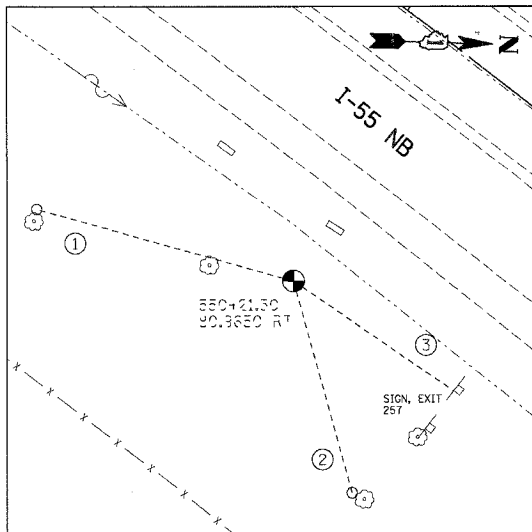
TP36

- (N 1786210.447, E 1026049.592, ELEV. 613.010)  
 ① PK NAIL ON WEST FACE OF 12" TREE, 48.10'  
 ② PK NAIL ON WEST FACE OF 16" TREE, 71.30'  
 ③ PK NAIL ON WEST FACE OF 20" TREE, 69.00'



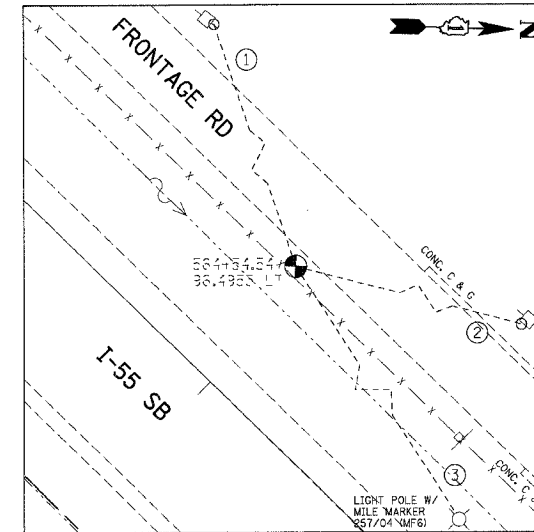
TP37

- (N 178505.820, E 1025826.282, ELEV. 591.733)  
 ① PK NAIL ON NEAREST FACE OF LIGHT POLE, 115.26'  
 ② PK NAIL ON NEAREST FACE OF LIGHT POLE, 70.05'  
 ③ PK NAIL ON SOUTH FACE OF 8" TREE, 85.00'



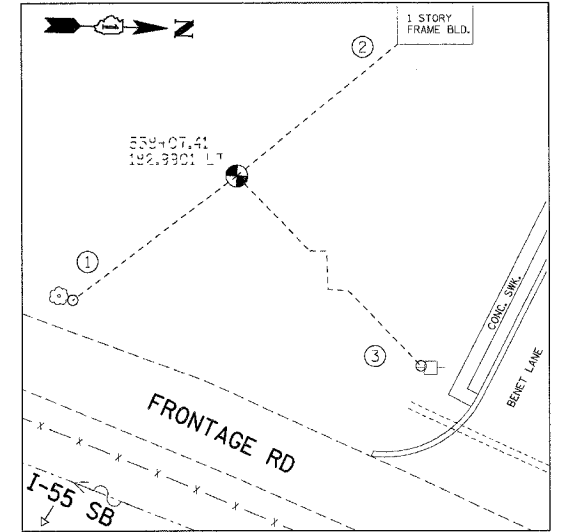
TP38

- (N 1788140.673, E 1026852.265, ELEV. 622.426)  
 ① PK NAIL ON WEST FACE OF 12" TREE, 75.80'  
 ② PK NAIL ON SOUTH FACE OF 40" TREE, 62.60'  
 ③ NEAREST CORNER OF SIGN POST, 56.70'



TP39

- (N 1789328.938, E 1027661.770, ELEV. 615.232)  
 ① PK NAIL ON NORTH FACE OF POWER POLE, 107.75'  
 ② PK NAIL ON EAST FACE OF POWER POLE, 93.25'  
 ③ NEAREST FACE OF LIGHT POLE, 119.10'



TP40

- (N 1787188.516, E 102604.155, ELEV. 627.130)  
 ① PK NAIL ON NORTH FACE OF 12" TREE, 58.60'  
 ② NEAREST CORNER OF BUILDING, 59.00'  
 ③ PK NAIL ON SOUTH FACE OF POWER POLE, 101.50'

PLOT DATE = #DATE#  
 FILE NAME = #FILE#  
 PLOT SCALE = #SCALE#  
 USER NAME = #USER#  
 C:\PROGRAMS\AUTOCAD\BIN\ACAD.PLOT  
 2-22-2007 12:25:41  
 C:\PROGRAMS\AUTOCAD\BIN\ACAD.PLOT  
 2-22-2007 12:25:41  
 C:\PROGRAMS\AUTOCAD\BIN\ACAD.PLOT  
 2-22-2007 12:25:41  
 C:\PROGRAMS\AUTOCAD\BIN\ACAD.PLOT  
 2-22-2007 12:25:41  
 C:\PROGRAMS\AUTOCAD\BIN\ACAD.PLOT  
 2-22-2007 12:25:41

NOTE:  
 ALL CONTROL POINTS ON THIS SHEET WERE  
 SET WITH 2" IRON ROD WITH YELLOW CAP

REVISIONS	
NAME	DATE

ILLINOIS DEPARTMENT OF TRANSPORTATION  
 FAI ROUTE 55 (BLACK ROAD TO U.S. 30)  
 WIDENING AND RESURFACING

**ALIGNMENT, TIES AND BENCHMARKS VII**

SCALE: N.T.S. DRAWN BY: SB  
 DATE: 02/23/07 CHECKED BY: DDH

**TENG** TENG & ASSOCIATES, INC.  
 ENGINEERS/ARCHITECTS/PLANNERS  
 CHICAGO, ILLINOIS