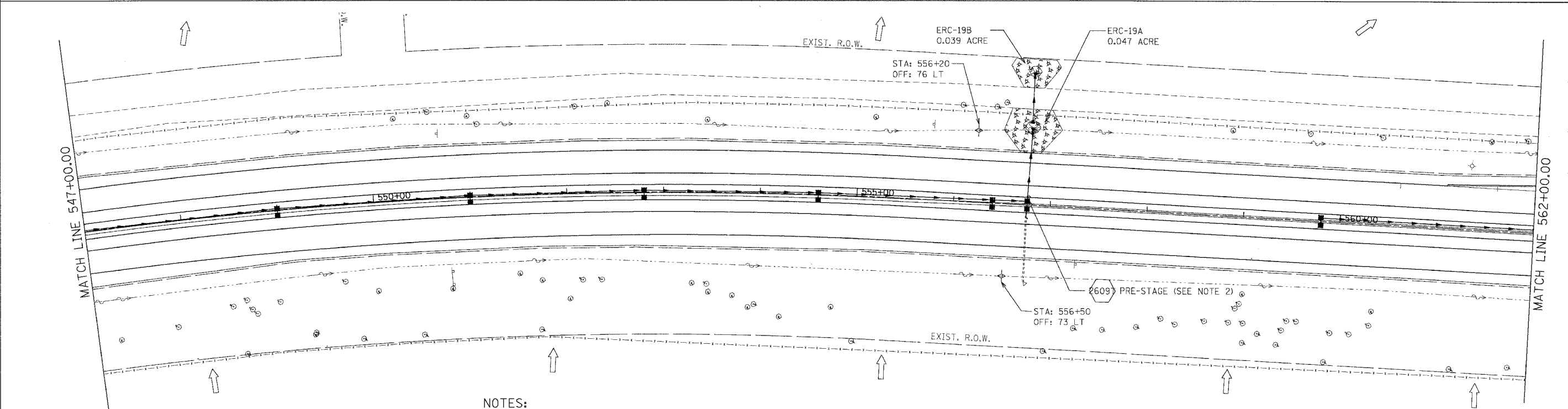
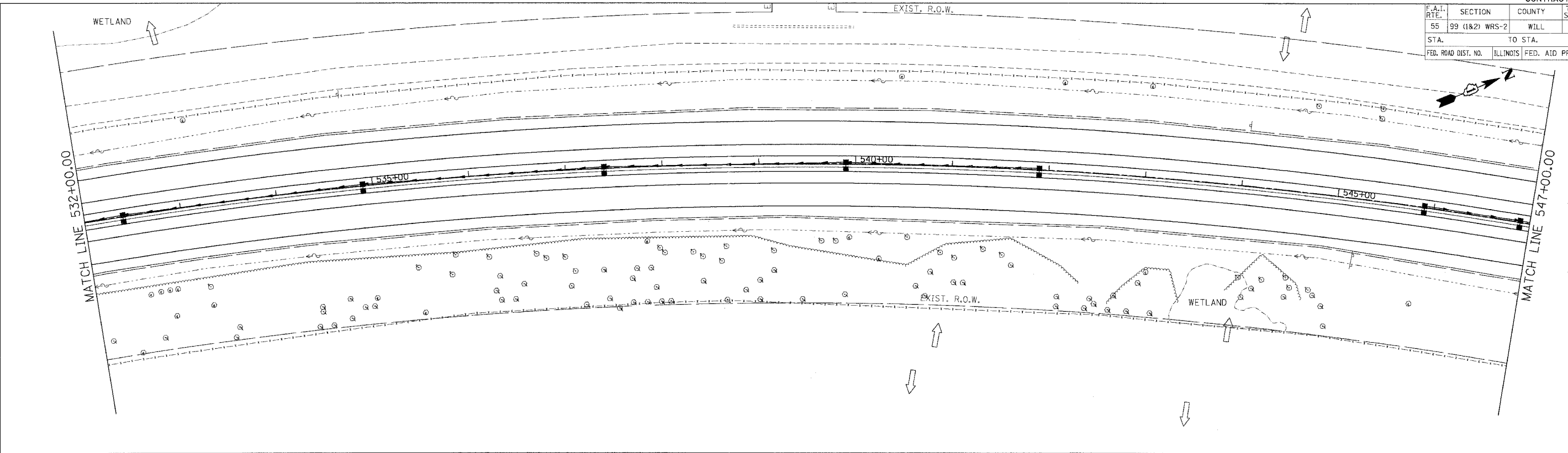


PLOT DATE: 03/15/07  
 PLOT SCALE: 1/8"=10'  
 USER: MORCOM

CONTRACT NO. 60B46				
F.A.I. RTE.	SECTION	COUNTY	TOTAL SHEETS	SHEET NO.
55	99 (1&2) WRS-2	WILL	228	113
STA.	TO STA.			
FED. ROAD DIST. NO.	ILLINOIS	FED. AID PROJECT		



- NOTES:**
1. FOR PERMANENT STRUCTURE, PERMANENT PIPE AND SEDIMENT CONTROL INLET FILTER, SEE DRAINAGE SCHEDULES, SHEETS 129 TO 133.
  2. TEMPORARY END SECTION (2609) SHALL BE CONSTRUCTED FOR INTERIM DRAINAGE IN PRE-STAGE ALONG WITH PIPE (2700). THE EXISTING DITCH SHALL BE GRADED AT THE END SECTION OPENING FOR POSITIVE DRAINAGE. THE GRADING SIDE SLOPES NO STEEPER THAN 3H : 1V AND LONGITUDINAL GRADES NO STEEPER THAN 6H : 1V. THE COST OF GRADING THE DITCH AT THE END SECTION SHALL BE INCLUDED IN THE CONTRACT UNIT PRICE FOR STORM SEWERS OF THE TYPE, SIZE AND CLASS SPECIFIED. INLET AND PIPE PROTECTION SHALL BE CONSTRUCTED AND MAINTAINED UNTIL THE MEDIAN DITCH IS GRADED TO DRAIN INTO THE STRUCTURE THROUGH THE GRATE. INLET AND PIPE PROTECTION WILL BE PAID FOR AT THE CONTRACT UNIT PRICE EACH.

**LEGEND**

	INLET FILTERS
	TEMPORARY DITCH CHECK
	TEMPORARY EROSION CONTROL SEEDING AND MULCH METHOD 2
	RIPRAP CLASS A3 & A4
	TEMPORARY SILT FENCE
	OUTLET
	SHEET FLOW

REVISIONS	
NAME	DATE

**MORCOM, N.V., INC.**  
 CONSULTING ENGINEERS  
 CHICAGO, ILLINOIS

ILLINOIS DEPARTMENT OF TRANSPORTATION  
 FAI ROUTE 55 (BLACK ROAD TO U.S. 30)  
 WIDENING AND RESURFACING  
**EROSION AND SEDIMENT CONTROL**  
**FAI 55**  
**STA. 532+00.00 TO STA. 562+00.00**

SCALE: 1"=50'  
 DATE: 03/15/07  
 DRAWN BY: SN  
 CHECKED BY: TKL

**TENG**

TENG & ASSOCIATES, INC.  
 ENGINEERS/ARCHITECTS/PLANNERS  
 CHICAGO, ILLINOIS