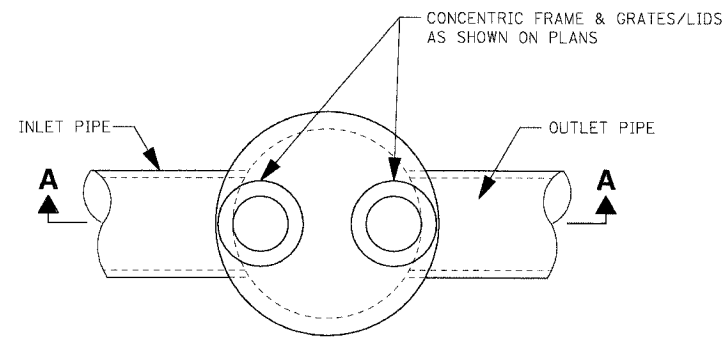
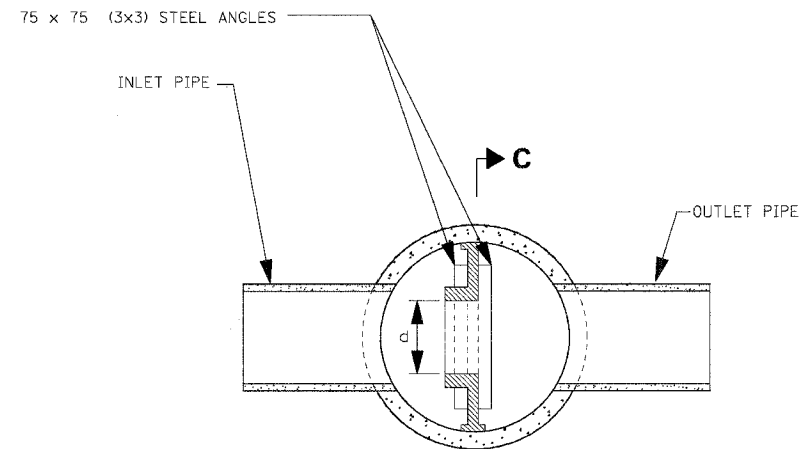


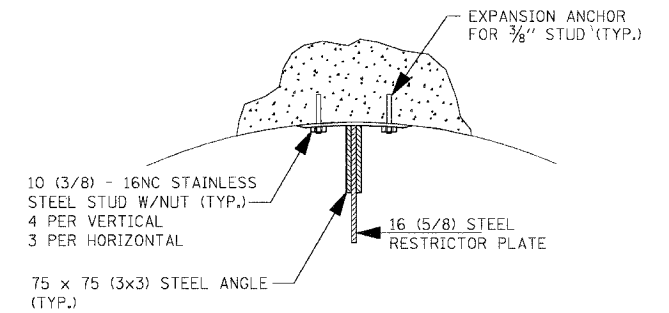
F.A.I. RTE.	SECTION	COUNTY	TOTAL SHEETS	SHEET NO.
55	99 (1&2) WRS-2	WILL	228	143
STA.		TO STA.		
FED. ROAD DIST. NO.		ILLINOIS FED. AID PROJECT		



PLAN



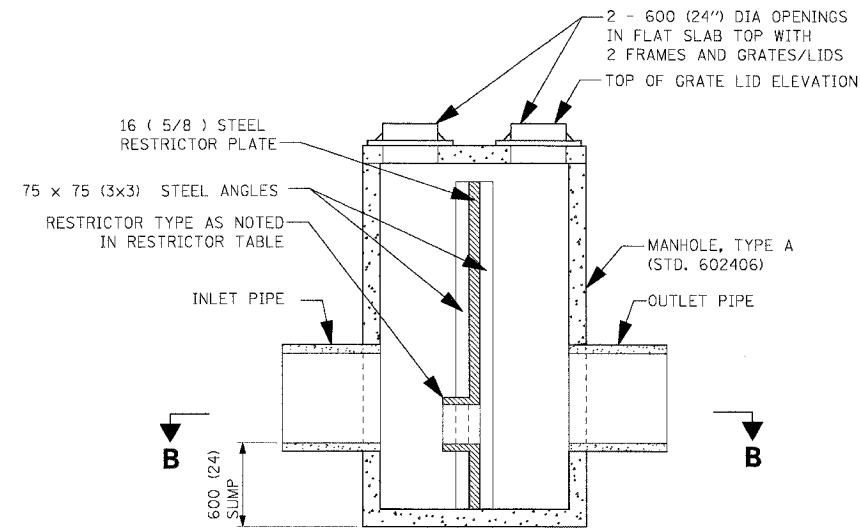
SECTION B-B



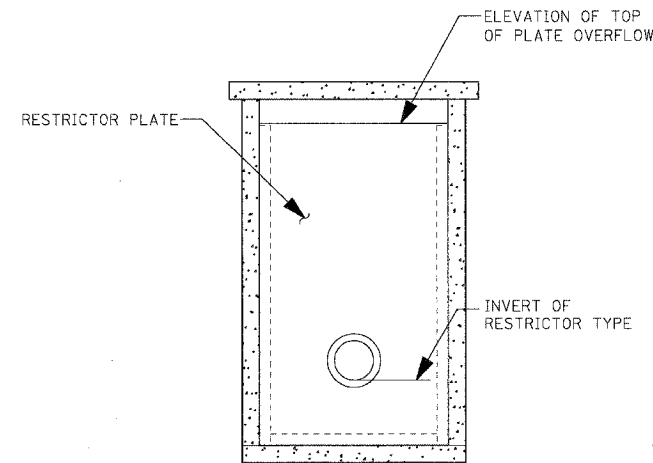
ANGLE FASTENER DETAIL

NOTES:

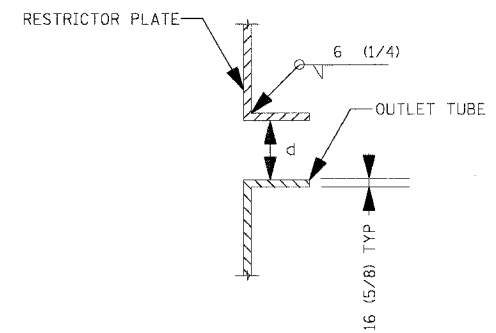
1. ALL STEEL ANGLES AND PLATES TO BE GALVANIZED AFTER FABRICATION.
2. ALL RESTRICTOR PLATES, ANGLES AND HARDWARE TO BE INCLUDED IN THE COST OF THE MANHOLE.
3. BASIS OF PAYMENT: "MANHOLES, TYPE A, 1.8m (6FT.)-DIAMETER, TYPE 1 FRAME, CLOSED LID, RESTRICTOR PLATE" EACH.



SECTION A-A



SECTION C-C

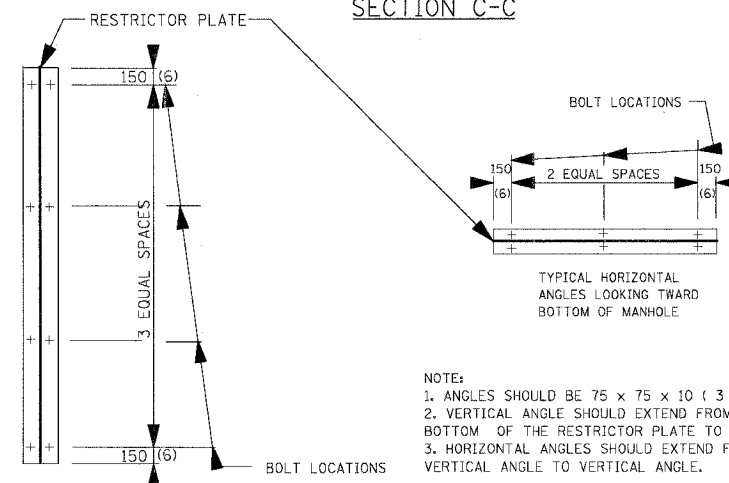


INLET TUBE DETAIL

MANHOLE WITH RESTRICTOR PLATE

N.T.S.

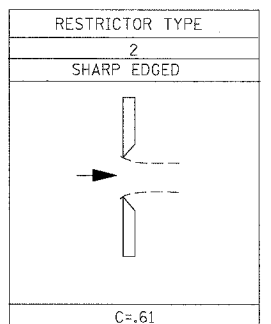
STR. ID	STATION OFFSET	MANHOLE DIAMETER	FRAME AND GRATE	RESTRICTOR TYPE	INSIDE RESTRICTOR TYPE DIA	INVERT OF RESTRICTOR TYPE	ELEVATION OF TOP OF PLATE OVERFLOW
2150	420+00, 5' LT	6'	TYPE 1	2	12"	579.85	584.86
2450	503+88, 5' LT	6'	TYPE 1	2	15"	585.45	589.45



STEEL ANGLE BOLTING DETAILS

NOTE:

1. ANGLES SHOULD BE 75 x 75 x 10 (3 x * x 3/4).
2. VERTICAL ANGLE SHOULD EXTEND FROM THE BOTTOM OF THE RESTRICTOR PLATE TO THE TOP.
3. HORIZONTAL ANGLES SHOULD EXTEND FROM VERTICAL ANGLE TO VERTICAL ANGLE.



REVISIONS	
NAME	DATE

ILLINOIS DEPARTMENT OF TRANSPORTATION
 FAI ROUTE 55 (BLACK ROAD TO U.S. 30)
 WIDENING AND RESURFACING

DRAINAGE DETAILS - IV
 MANHOLE WITH RESTRICTOR PLATE

SCALE: N.T.S.

DATE 02/23/07

DRAWN BY MRK

CHECKED BY TKL

TENG

TENG & ASSOCIATES, INC.
 ENGINEERS/ARCHITECTS/PLANNERS
 CHICAGO, ILLINOIS

PLOT DATE = 02/23/07
 PLOT SCALE = AS SHOWN
 USER NAME = 0156278