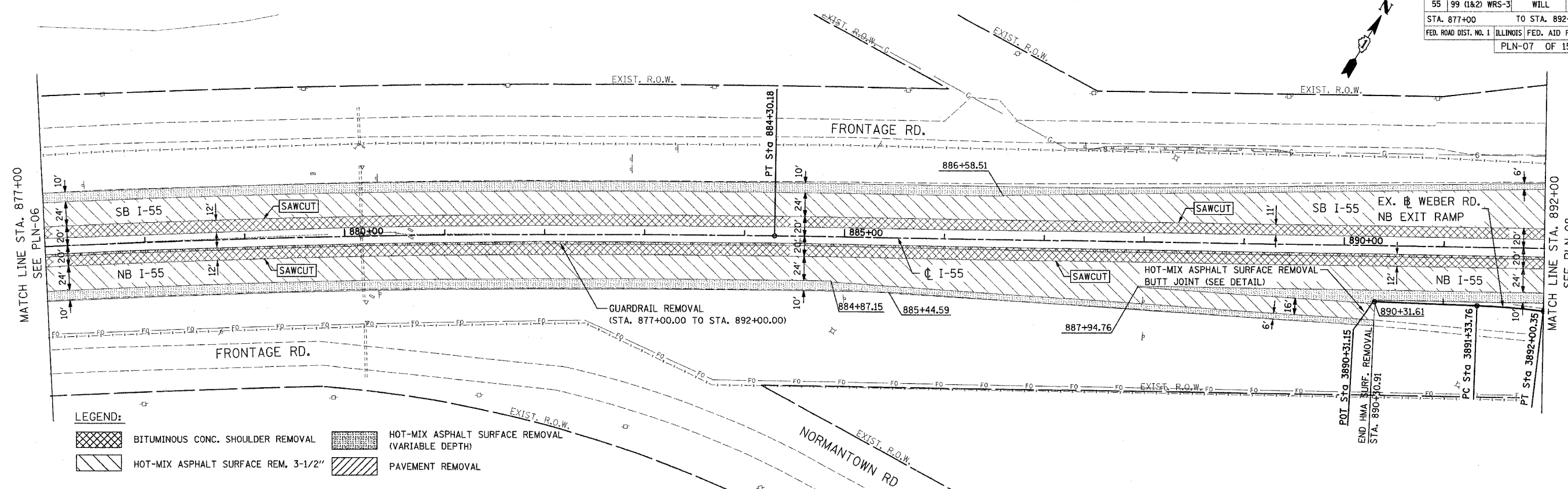


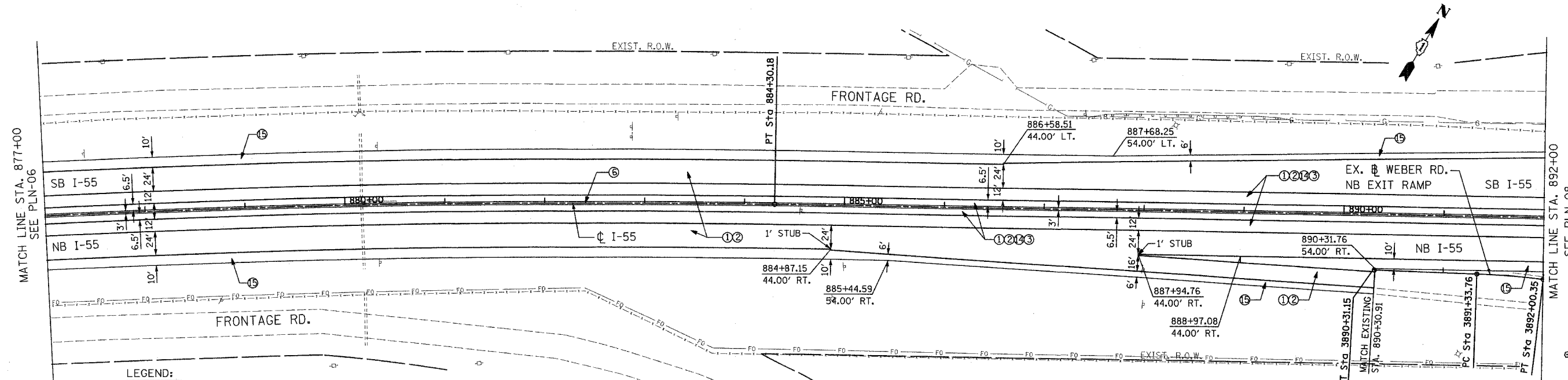
F.A.I. RTE.	SECTION	COUNTY	TOTAL SHEETS	SHEET NO.
55	99 (1&2) WRS-3	WILL	305	47
STA. 877+00		TO STA. 892+00		
FED. ROAD DIST. NO. 1 ILLINOIS FED. AID PROJECT				
PLN-07 OF 15				



LEGEND:

- BITUMINOUS CONC. SHOULDER REMOVAL
- HOT-MIX ASPHALT SURFACE REM, 3-1/2"
- HOT-MIX ASPHALT SURFACE REMOVAL (VARIABLE DEPTH)
- PAVEMENT REMOVAL

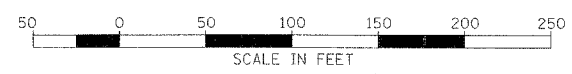
EXISTING CONDITION



LEGEND:

- ① POLYMERIZED HOT-MIX ASPHALT SURF. CSE, STONE MATRIX ASPHALT, N80
- ② POLYMERIZED HOT-MIX ASPHALT BIND. CSE, STONE MATRIX ASPHALT, N80
- ③ HOT-MIX ASPHALT BASE COURSE, 8"
- ④ HOT-MIX ASPHALT BINDER COURSE, IL-19, N70, 8"
- ⑤ P.C.C. CONCRETE BASE COURSE, 10-1/2"
- ⑥ CONCRETE BARRIER, DOUBLE FACE, 42" HEIGHT
- ⑦ HOT-MIX ASPHALT BASE COURSE, 2-1/2"
- ⑧ HOT-MIX ASPHALT SURFACE COURSE, MIX "D", N70 - (SHLD)
- ⑨ HOT-MIX ASPHALT SURFACE COURSE, MIX "D", N70

PROPOSED CONDITION



REVISIONS	
NAME	DATE

ILLINOIS DEPARTMENT OF TRANSPORTATION
 FAI ROUTE 55
 143RD STREET TO WEBER ROAD
 EXISTING AND PROPOSED
 ROADWAY PLAN

SCALE: 1" = 50'
 DATE: 02-23-07

DRAWN BY: ALR
 CHECKED BY: RH

FINAL