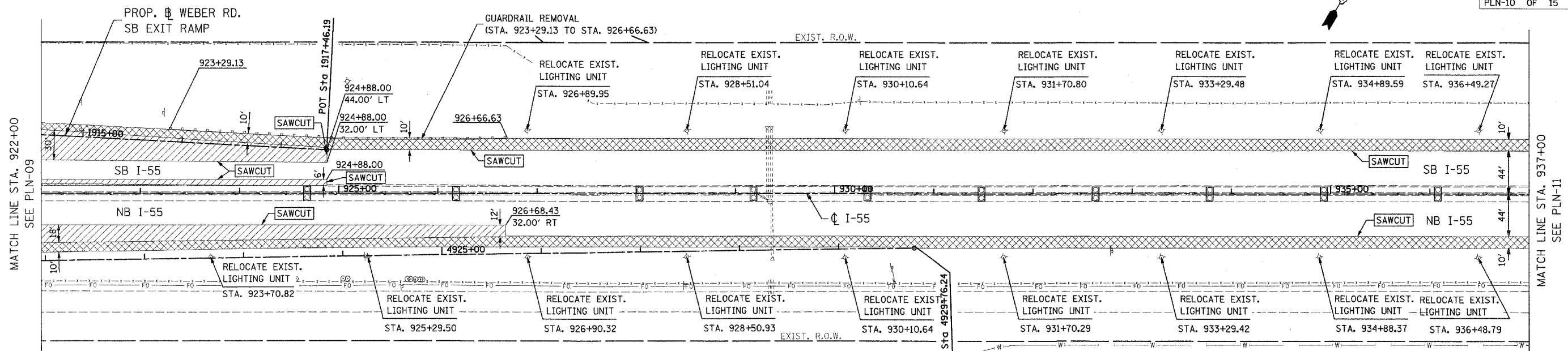


F.A.I. RTE.	SECTION	COUNTY	TOTAL SHEETS	SHEET NO.
55	99 (1&2) WRS-3	WILL	305	50
STA. 922+00		TO STA. 937+00		
FED. ROAD DIST. NO. 1 ILLINOIS FED. AID PROJECT				
PLN-10 OF 15				

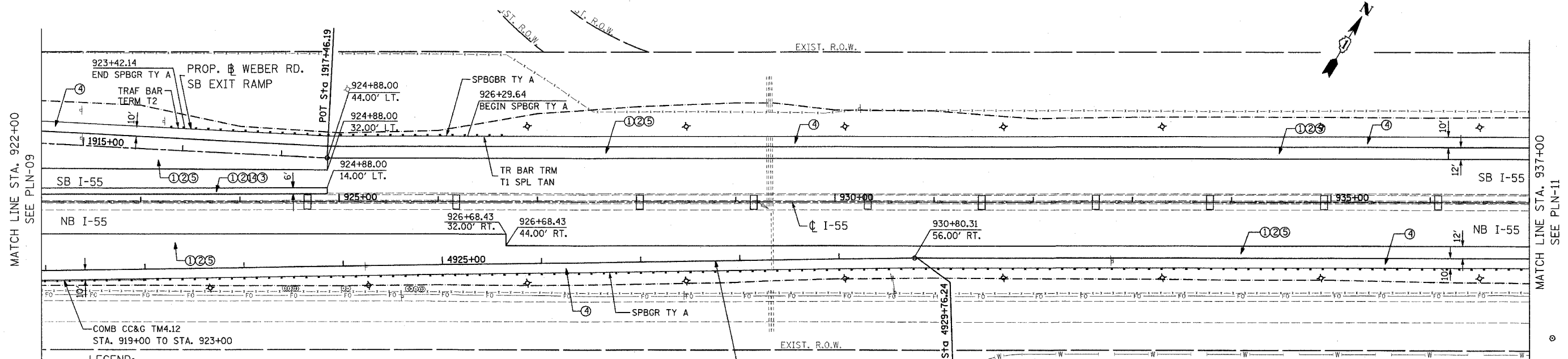


LEGEND:

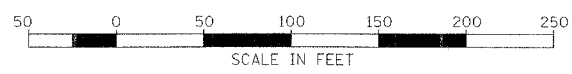
	BITUMINOUS CONC. SHOULDER REMOVAL		HOT-MIX ASPHALT SURFACE REMOVAL (VARIABLE DEPTH)
	HOT-MIX ASPHALT SURFACE REM, 3-1/2"		PAVEMENT REMOVAL

NOTE:
FOR LIGHTNING PLAN DETAILS SEE SHEET NO. 168 TO SHEET NO. 180

EXISTING CONDITION



- LEGEND:**
- ① POLYMERIZED HOT-MIX ASPHALT SURF. CSE, STONE MATRIX ASPHALT, N80
 - ② POLYMERIZED HOT-MIX ASPHALT BIND. CSE, STONE MATRIX ASPHALT, N80
 - ③ HOT-MIX ASPHALT BASE COURSE, 8"
 - ④ HOT-MIX ASPHALT BINDER COURSE, IL-19, N70, 8"
 - ⑤ P.C.C. CONCRETE BASE COURSE, 10-1/2"
 - ⑥ CONCRETE BARRIER, DOUBLE FACE, 42" HEIGHT
 - ⑦ HOT-MIX ASPHALT BASE COURSE, 2-1/2"
 - ⑧ HOT-MIX ASPHALT SURFACE COURSE, MIX "D", N70 - (SHLD)
 - ⑨ HOT-MIX ASPHALT SURFACE COURSE, MIX "D", N70



REVISIONS	
NAME	DATE

PROPOSED CONDITION

ILLINOIS DEPARTMENT OF TRANSPORTATION
FAI ROUTE 55
143RD STREET TO WEBER ROAD
EXISTING AND PROPOSED
ROADWAY PLAN

SCALE: 1" = 50'
DATE: 02-23-07

DRAWN BY: ALR
CHECKED BY: RH

FINAL