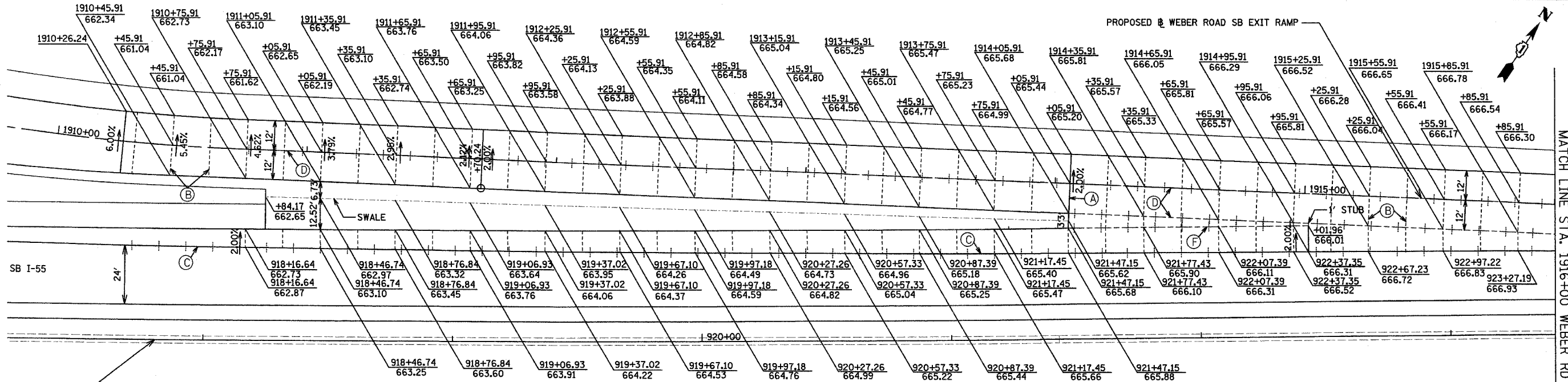
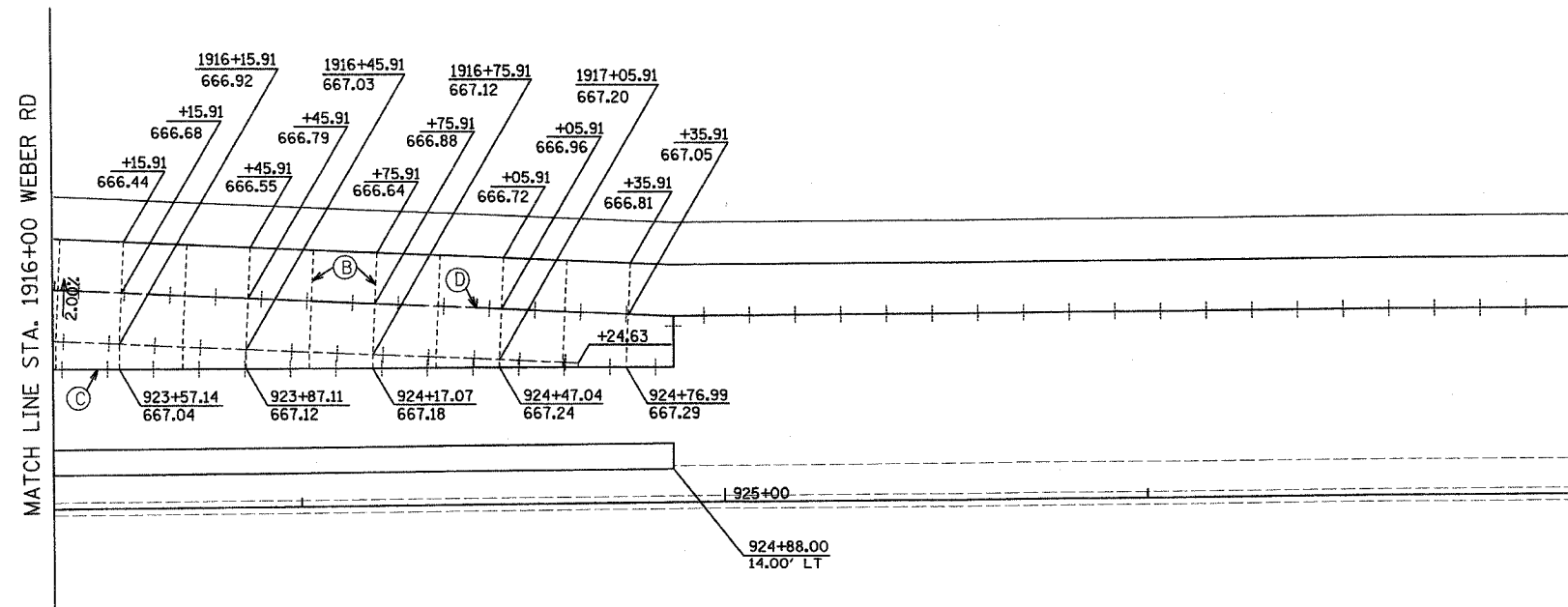


F.A.I. RTE.	SECTION	COUNTY	TOTAL SHEETS	SHEET NO.
55	99 (1&2) WRS-3	WILL	305	56
STA.		TO STA.		
FED. ROAD DIST. NO.		ILLINOIS FED. AID PROJECT		
P-XX-XXX-XX		DET-01 OF 05		



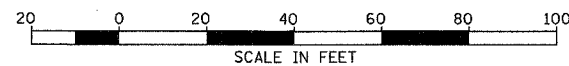
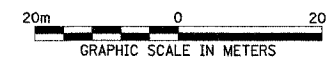
MATCH LINE STA. 1916+00 WEBER RD

☐ I-55



LEGEND

- PROP. MANHOLE
- PROP. CATCH BASIN/INLET
- STUB (0.6 m, UNLESS OTHERWISE NOTED)
- (A) ——— EXPANSION JOINT (STANDARD 420001)
- (B) - - - - SAWED TRANSVERSE CONTRACTION JOINT
- (C) + - - + LONGITUDINAL CONSTRUCTION JOINT WITH NO. 25 TIE BARS EPOXY COATED DEFORMED TIE BARS (DRILL & GROUT)
- (D) + - - + SAWED LONGITUDINAL CONSTRUCTION JOINT WITH NO. 25 TIE BARS
- (E) ——— KEYED LONGITUDINAL CONSTRUCTION JOINT WITHOUT TIEBARS
- (F) + - - + LONGITUDINAL CONSTRUCTION JOINT WITH NO. 22 TIE BARS



REVISIONS	
NAME	DATE

ILLINOIS DEPARTMENT OF TRANSPORTATION
 FAI ROUTE 55
 143RD STREET TO WEBER ROAD
 GORE DETAILS
 WEBER ROAD SB EXIT RAMP

SCALE: 1" = 20'
 DATE: 02-23-07

DRAWN BY: SJV
 CHECKED BY: DM

FINAL