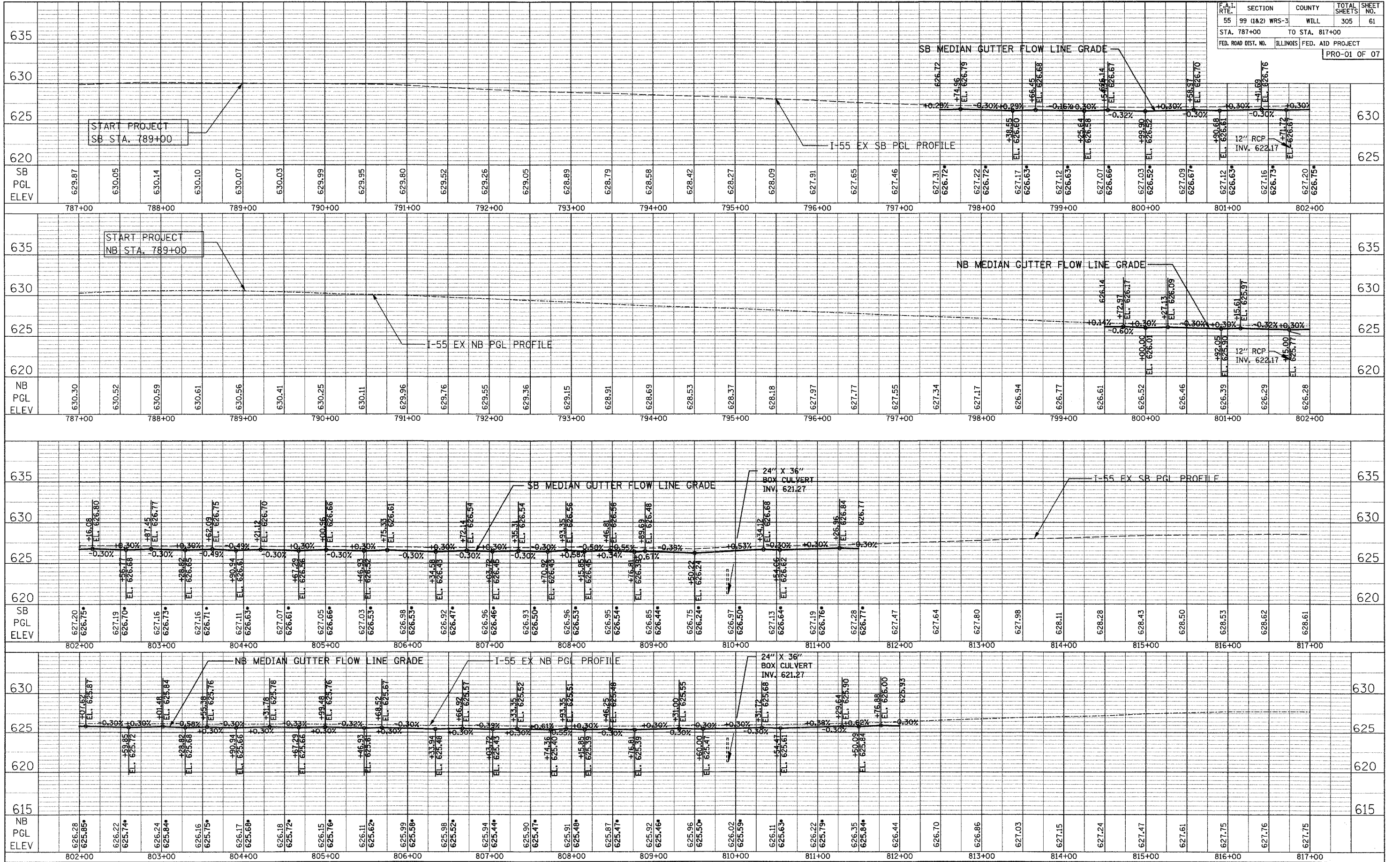


F.A.I. RTE.	SECTION	COUNTY	TOTAL SHEETS	SHEET NO.
55	99 (1&2) WRS-3	WILL	305	61
STA. 787+00		TO STA. 817+00		
FED. ROAD DIST. NO.		ILLINOIS FED. AID PROJECT		
PRO-01 OF 07				

DATE	BY
DATE	BY
DATE	BY

DATE	BY
DATE	BY
DATE	BY

PLOT DATE = 02/08/2007
 FILE NAME = 411EL
 PLOT SCALE = 1/8"=1'-0"
 USER NAME = 01USER8



• PROPOSED GUTTER FLOW LINE GRADE ELEVATION

SCALE: 1"=5' VERTICAL
1"=50' HORIZONTAL

F&I ROUTE 55
143RD STREET TO WEBER ROAD

ROADWAY PROFILES FINAL