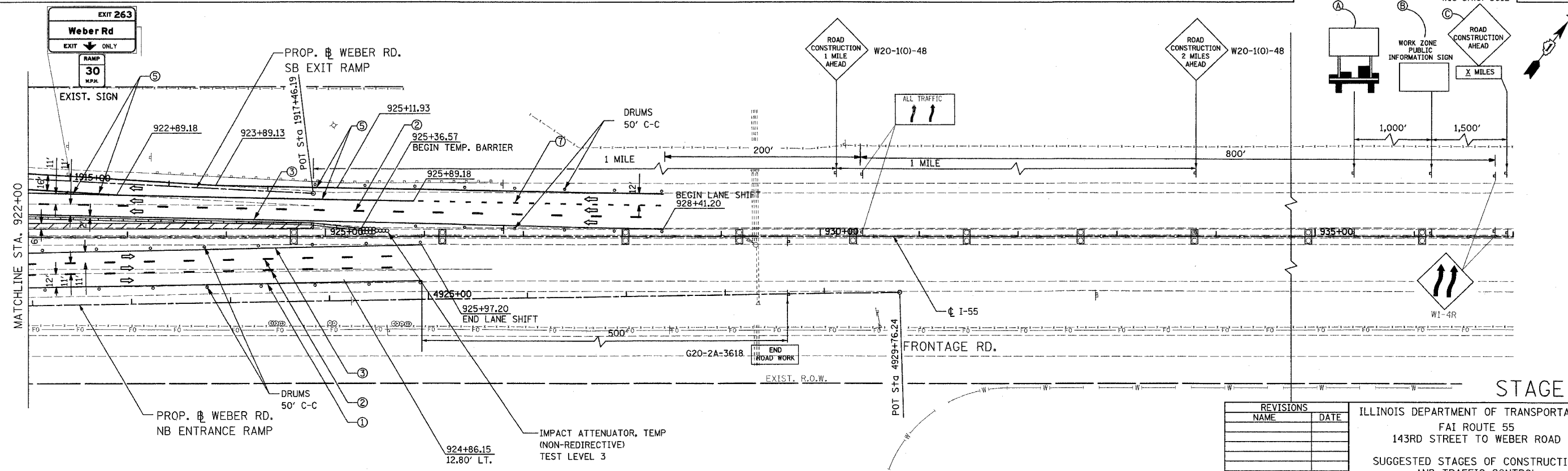
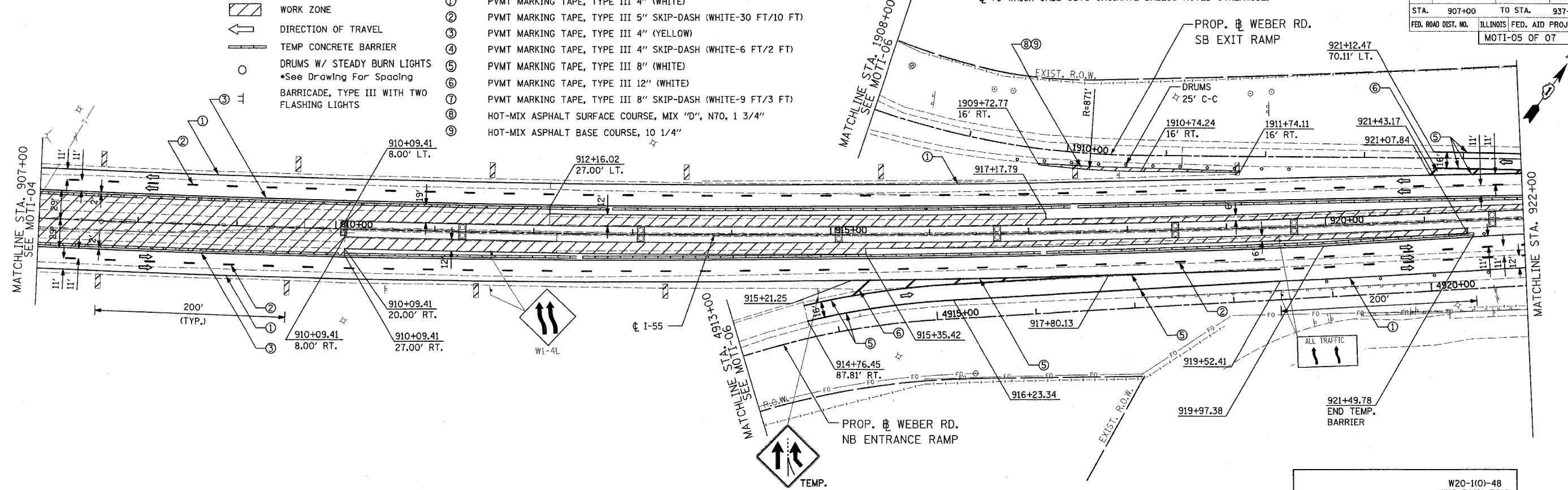


F.A.I. RTE.	SECTION	COUNTY	TOTAL SHEETS	SHEET NO.
55	99 (I&2) WRS-3	WILL	305	78
STA.	907+00	TO STA.	937+00	
FED. ROAD DIST. NO.	ILLINOIS	FED. AID PROJECT	MOTI-05 OF 07	

- LEGEND**
- ① PVMT MARKING TAPE, TYPE III 4" (WHITE)
 - ② PVMT MARKING TAPE, TYPE III 5" SKIP-DASH (WHITE-30 FT/10 FT)
 - ③ PVMT MARKING TAPE, TYPE III 4" (YELLOW)
 - ④ PVMT MARKING TAPE, TYPE III 8" (WHITE-6 FT/2 FT)
 - ⑤ PVMT MARKING TAPE, TYPE III 8" (WHITE)
 - ⑥ PVMT MARKING TAPE, TYPE III 12" (WHITE)
 - ⑦ PVMT MARKING TAPE, TYPE III 8" SKIP-DASH (WHITE-9 FT/3 FT)
 - ⑧ HOT-MIX ASPHALT SURFACE COURSE, MIX "D", N70, 1 3/4"
 - ⑨ HOT-MIX ASPHALT BASE COURSE, 10 1/4"
- WORK ZONE
 - DIRECTION OF TRAVEL
 - TEMP CONCRETE BARRIER
 - DRUMS W/ STEADY BURN LIGHTS
*See Drawing For Spacing
 - BARRICADE, TYPE III WITH TWO FLASHING LIGHTS

*STATION AND OFFSET FOR RAMP WORK ARE DESCRIBED FROM RAMP
 ☒ TO WHICH CALL OUTS ORIGINATE UNLESS NOTED OTHERWISE.

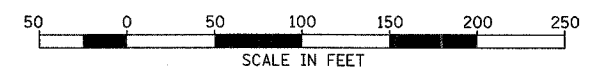


REVISIONS	
NAME	DATE

ILLINOIS DEPARTMENT OF TRANSPORTATION
 FAI ROUTE 55
 143RD STREET TO WEBER ROAD
 SUGGESTED STAGES OF CONSTRUCTION
 AND TRAFFIC CONTROL

SCALE: 1" = 50'
 DATE: 02-23-07

DRAWN BY: TJR
 CHECKED BY: DM



SEE IDOT STANDARD 701400

STAGE I

FINAL