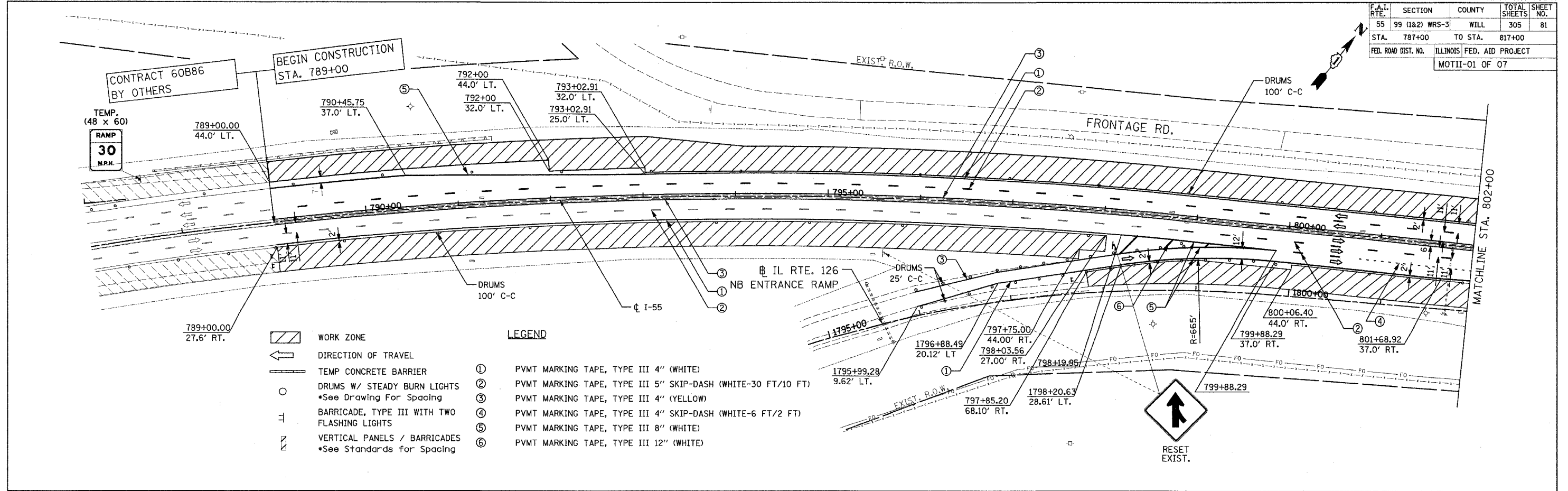


F.A.I. RTE.	SECTION	COUNTY	TOTAL SHEETS	SHEET NO.
55	99 (1&2) WRS-3	WILL	305	81
STA. 787+00	TO STA. 817+00			
FED. ROAD DIST. NO.	ILLINOIS FED. AID PROJECT		MOTII-01 OF 07	

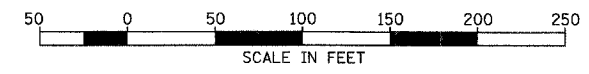
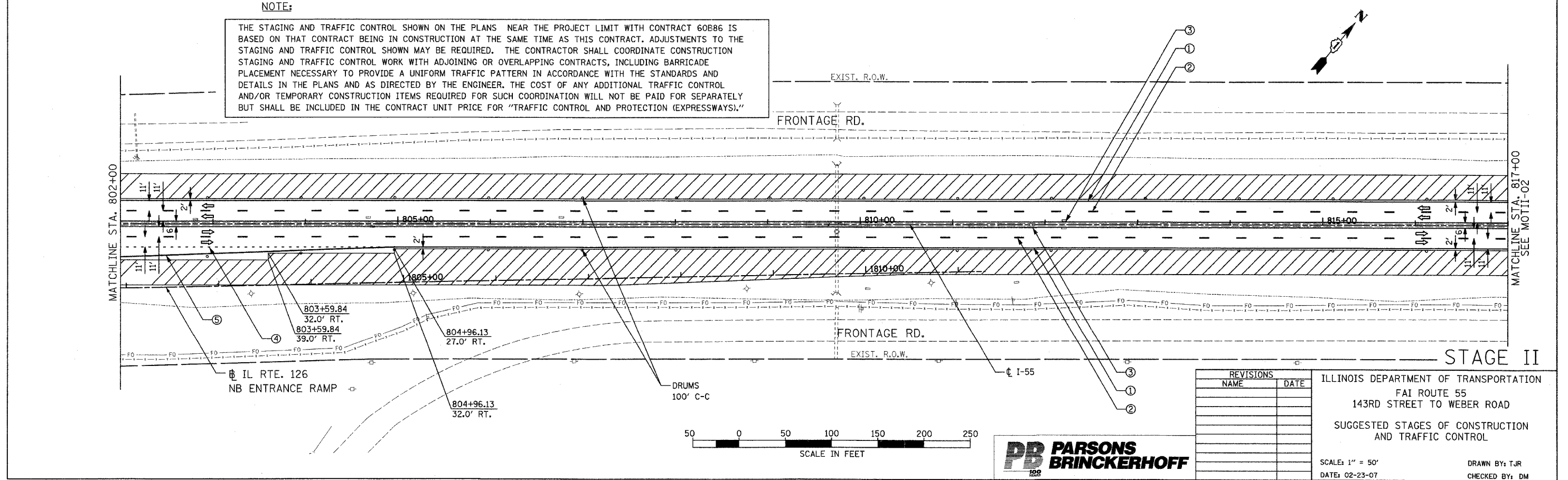


- LEGEND**
- WORK ZONE
 - DIRECTION OF TRAVEL
 - TEMP CONCRETE BARRIER
 - DRUMS W/ STEADY BURN LIGHTS
*See Drawing For Spacing
 - BARRICADE, TYPE III WITH TWO FLASHING LIGHTS
 - VERTICAL PANELS / BARRICADES
*See Standards for Spacing

- LEGEND**
- ① PVMT MARKING TAPE, TYPE III 4" (WHITE)
 - ② PVMT MARKING TAPE, TYPE III 5" SKIP-DASH (WHITE-30 FT/10 FT)
 - ③ PVMT MARKING TAPE, TYPE III 4" (YELLOW)
 - ④ PVMT MARKING TAPE, TYPE III 4" SKIP-DASH (WHITE-6 FT/2 FT)
 - ⑤ PVMT MARKING TAPE, TYPE III 8" (WHITE)
 - ⑥ PVMT MARKING TAPE, TYPE III 12" (WHITE)

NOTE:

THE STAGING AND TRAFFIC CONTROL SHOWN ON THE PLANS NEAR THE PROJECT LIMIT WITH CONTRACT 60B86 IS BASED ON THAT CONTRACT BEING IN CONSTRUCTION AT THE SAME TIME AS THIS CONTRACT. ADJUSTMENTS TO THE STAGING AND TRAFFIC CONTROL SHOWN MAY BE REQUIRED. THE CONTRACTOR SHALL COORDINATE CONSTRUCTION STAGING AND TRAFFIC CONTROL WORK WITH ADJOINING OR OVERLAPPING CONTRACTS, INCLUDING BARRICADE PLACEMENT NECESSARY TO PROVIDE A UNIFORM TRAFFIC PATTERN IN ACCORDANCE WITH THE STANDARDS AND DETAILS IN THE PLANS AND AS DIRECTED BY THE ENGINEER. THE COST OF ANY ADDITIONAL TRAFFIC CONTROL AND/OR TEMPORARY CONSTRUCTION ITEMS REQUIRED FOR SUCH COORDINATION WILL NOT BE PAID FOR SEPARATELY BUT SHALL BE INCLUDED IN THE CONTRACT UNIT PRICE FOR "TRAFFIC CONTROL AND PROTECTION (EXPRESSWAYS)."



REVISIONS	
NAME	DATE

ILLINOIS DEPARTMENT OF TRANSPORTATION
 FAI ROUTE 55
 143RD STREET TO WEBER ROAD
 SUGGESTED STAGES OF CONSTRUCTION
 AND TRAFFIC CONTROL

SCALE: 1" = 50'
 DATE: 02-23-07

DRAWN BY: TJR
 CHECKED BY: DM