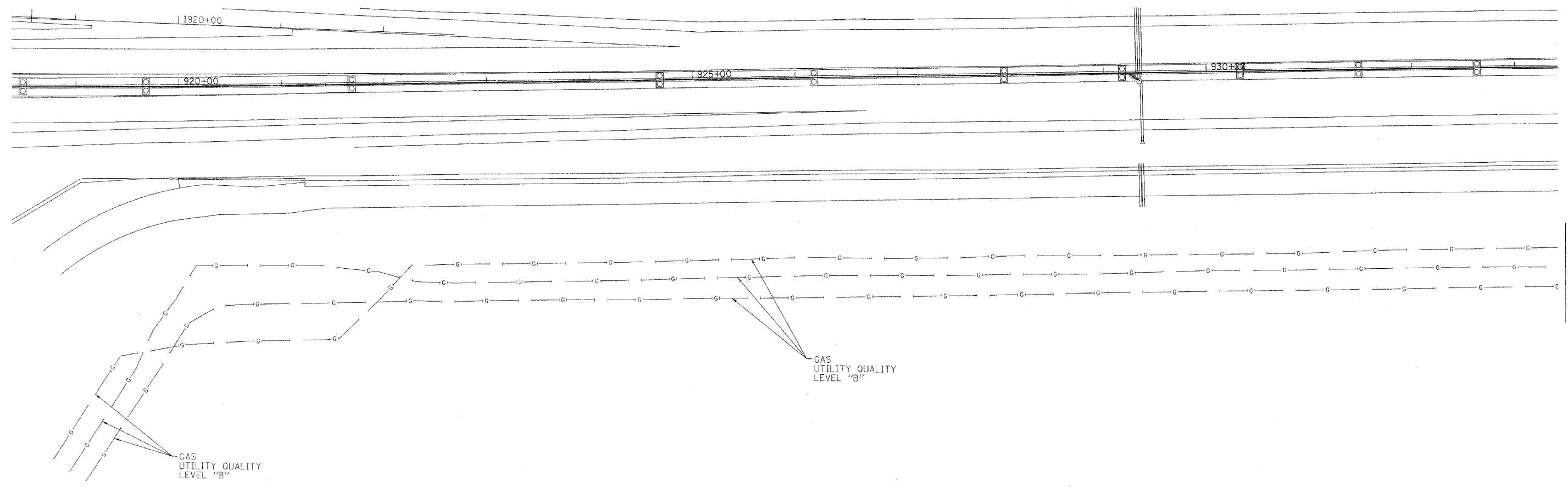
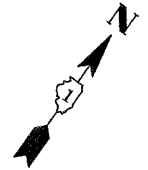
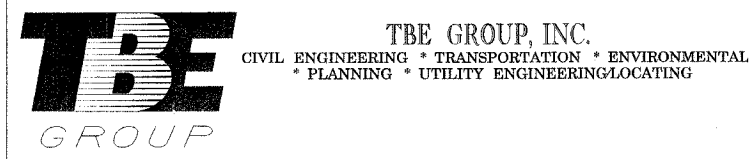


F.A. RTE.	SECTION	COUNTY	TOTAL SHEETS	SHEET NO.
	99 (1&2) WRS-1	WILL	305	133
STA.		TO STA.		
FED. ROAD DIST. NO.	ILLINOIS	FED. AID PROJECT		



MATCH TO PAGE 31




IL09500132, 142, 158, 229, 245
TBE SUE PAGE NO: 30 of 31
Checked by: _____

Utility Quality Level "A" : Test Holes
Utility Quality Level "B" : Designating

— — — — —	FORCE MAIN
— T — T —	TELEPHONE
— W — — —	WATER
— G — — —	GAS
— CTV — CTV —	CABLE TELEVISION
— FO — FO —	FIBER OPTIC
— E — — —	ELECTRIC
⊙	TEST HOLE

The SBC locations depicted have been obtained through the application of geophysical methods to determine the existence and approximate horizontal position of these facilities. However, SBC will not provide TBE Group, Inc. with utility records nor allow access to their field closures (pedestals/manholes etc.), to help verify the locations of their existing underground facilities. Therefore, TBE is unable to verify the completeness of the SBC locations depicted in accordance with the CI/ASCE Standard 38-02.

Utilities shown on these plans as depicted in the legend have been investigated by TBE Group, Inc in accordance with SUE Industry Standards. All other information shown has been provided to TBE Group, Inc by others. Changes to utilities after dates shown may have been made and therefore may result in variances from this plan. Consideration should be given to updating this plan if deemed advisable prior to final design and construction.


205 W. WACKER DRIVE
SUITE 1020
CHICAGO, IL 60606
(312) 704-1970

REVISIONS	
NAME	DATE

ILLINOIS DEPARTMENT OF TRANSPORTATION
SUE Investigation of Underground Utilities
I-55/I-80 from US RT. 30 to Weber Road
Section No. 99 (1&2) WRS-1
Contract No. 62895 and 62896
WILL County
DRAWN BY : KLC
SCALE : 1" = 50'
SOL "B" DATE : 2/16/06