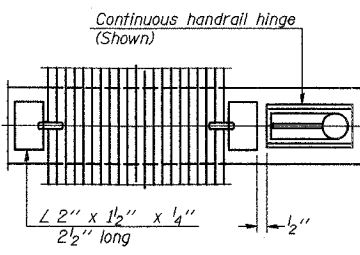
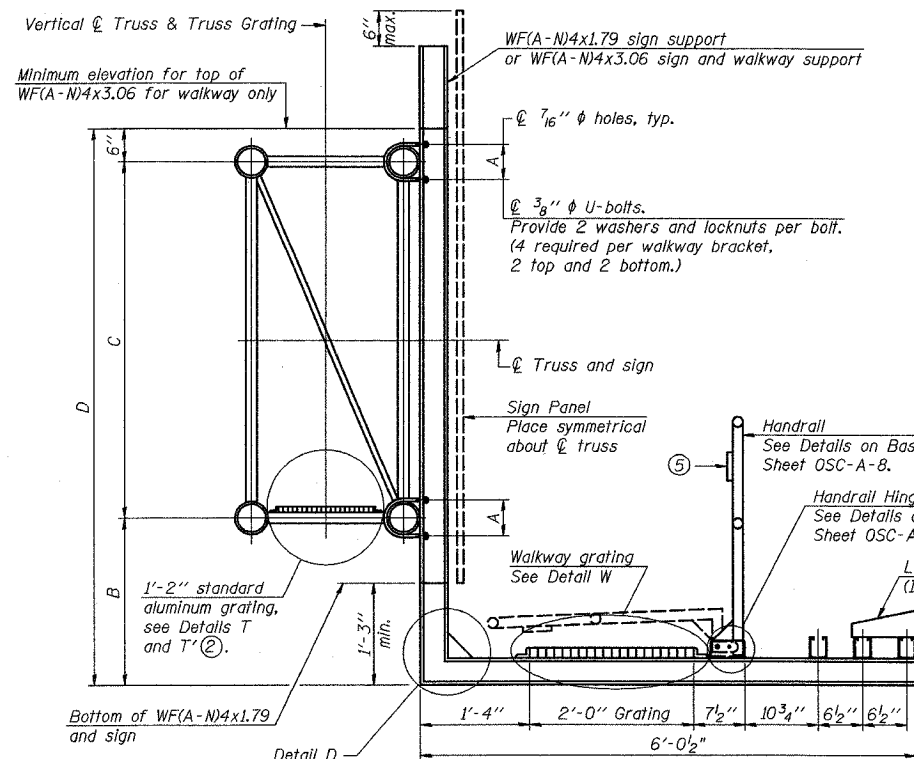
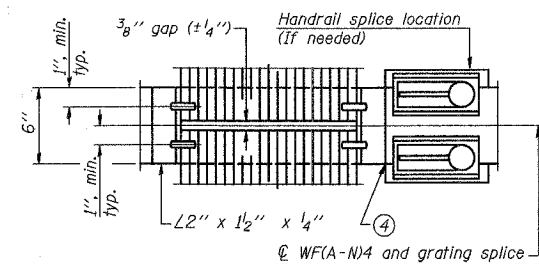


CONTRACT NO. 60B47				
F.A.P. RTE.	SECTION	COUNTY	TOTAL SHEETS	SHEET NO.
55	100 (1&2) I-9	WILL	305	158
STA.		TO STA.		
FED. ROAD DIST. NO.		ILLINOIS FED. AID PROJECT		
DETLS - 24 OF 30				



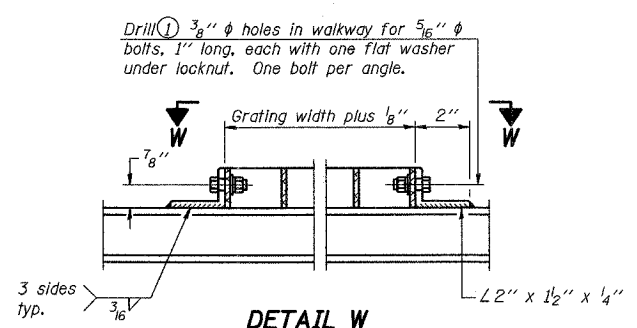
SECTION W-W  
(CONTINUOUS WALKWAY GRATING)



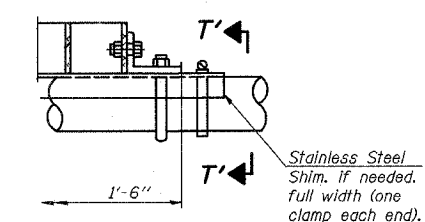
SECTION W-W  
(AT WALKWAY GRATING SPLICE)

**SPECIFICATIONS FOR STANDARD ALUMINUM GRATING**  
Main Bearing Bars (MBB) shall be 3/16" x 1 1/2" on 1 3/16" centers and conform to ASTM B211 Alloy 6061-T6.  
Cross bars (CB) shall be 3/16" x 1 1/2" on 4" centers and conform to ASTM B221 Alloy 6063-T5 or 6061-T6.

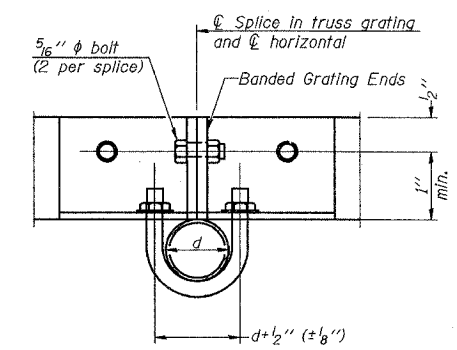
**OR**  
Aluminum Grating with modified "4" sections for main bearing bars shall meet the following requirements:  
Main bars shall conform to ASTM B221 Alloy 6061-T6 and have a minimum section modulus equal to 0.0705 in.<sup>3</sup> per bar, a depth of 1 1/2", spaced on 1 3/16" centers.  
Cross bars shall conform to ASTM B221 Alloy 6063-T5 or T-42 and spaced on 4" centers.



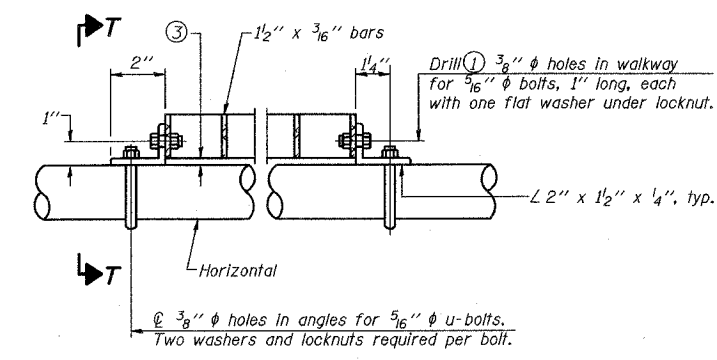
DETAIL W  
(Walkway grating)



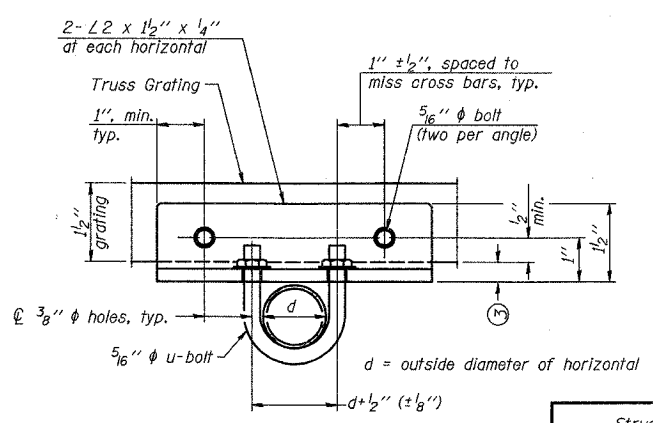
DETAIL T'  
(Truss grating splice)  
Details not shown same as Detail T.  
Alternate materials may be used subject to the Engineer's review and approval.



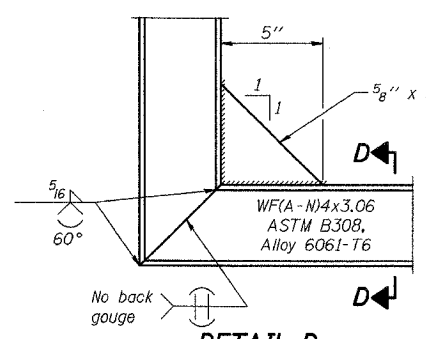
SECTION T'-T'



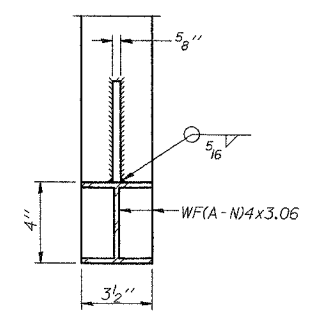
DETAIL T  
(Truss grating at horizontal)



SECTION T-T'



DETAIL D  
(See Detail P, Base Sheet OSC-A-8.)



SECTION D-D

NUMBER	REVISION	DATE

- Drilling holes in grating may be done in shop or field, based on Contractor's preference and subject to accurate alignment.
- When truss grating must be spliced, use suggested detail or other methods subject to the Engineer's review and approval. Locate splice to avoid interference between cross bars and bolt locations.
- Tube to grating gap may vary from 0 to 1/2", max. to align walkway, allow for camber, etc.
- If Handrail Joint present, weld angle to WF(A-N)4 and 1/4" extension bars. (See Base Sheet OSC-A-8)
- 1/8" x 1/2" x 2" welded to handrail posts to protect locations that contact grating.

Structure Number	Station	A	B	C	D
1C0991055L263.8	923+00	7 1/8"	3'-1.5"	7'-0"	10'-7.5"

**DAVID MASON & ASSOCIATES**  
Civil Engineering  
Structural Engineering  
Surveying  
445 E. Illinois, Suite 640  
Chicago, IL 60611  
(312) 942-9000

**PB PARSONS BRINCKERHOFF**

REVISIONS	
NAME	DATE

**OSC-A-7** I-7-05  
ILLINOIS DEPARTMENT OF TRANSPORTATION  
F.A.I. I-55  
143rd STREET TO WEBER RD.  
CANTILEVER SIGN STRUCTURES  
WALKWAY DETAILS  
ALUMINUM TRUSS & STEEL POST  
SCALE: DRAWN BY: JS, LC  
DATE: FEBRUARY 23, 2007 CHECKED BY: SE