

| | | | | |
|--------------------------------|----------------|------------------|--------------|-----------|
| F.A.I. RTE. | SECTION | COUNTY | TOTAL SHEETS | SHEET NO. |
| 95 | 99 (I&2) WRS-3 | WILL | 305 | 174 |
| STA. 937+00 | | TO STA. 952+00 | | |
| FED. ROAD DIST. NO. 1 ILLINOIS | | FED. AID PROJECT | | |
| L-7 OF 13 | | | | |

LEGEND

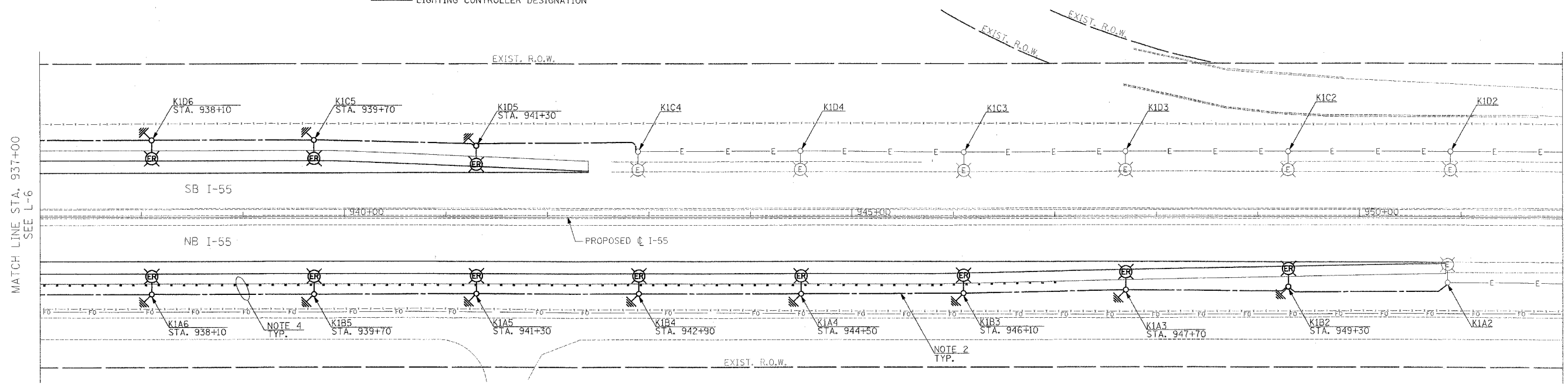
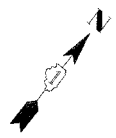
- EXISTING LIGHTING UNIT RELOCATED TO NEW FOUNDATION, 47.5' MOUNTING HEIGHT ALUMINUM POLE, 15' MAST ARM AND 310W HPS LUMINAIRE WITH NEW TRANSFORMER BASE
- EXISTING LIGHTING UNIT
- GROUND ROD
- UNIT DUCT, WITH 3-1/C NO.4 AND 1/C NO.6 GROUND (EPR-TYPE RHW), 1 1/4" DIA., POLYETHYLENE-UNLESS OTHERWISE NOTED
- EXISTING DUCT
- IDOT FIBER OPTIC CABLE

CIRCUIT DESIGNATION SCHEME

- M CD 1
- POLE NO ON GIVEN CKT (S)
- CIRCUIT OR CIRCUITS
- LIGHTING CONTROLLER DESIGNATION

NOTES:

- CONVENTIONAL LIGHT POLES SHALL BE SET BACK 20' FROM EDGE OF PAVEMENT UNLESS OTHERWISE NOTED.
- CONTRACTOR TO PROTECT AND MAINTAIN 5' MINIMUM CLEARANCE FROM EXISTING CABLES WHEN INSTALLING THE PROPOSED UNIT DUCT. LOCATIONS OF EXISTING CABLES AS DEPICTED ON THE PLANS ARE APPROXIMATE IN NATURE AND DO NOT CONSTITUTE THE EXACT REPRESENTATION. CONTRACTOR IS RESPONSIBLE TO ASCERTAIN EXACT LOCATION OF EXISTING CABLES. NO ADDITIONAL PAYMENT WILL BE MADE FOR THIS WORK.
- CONTRACTOR TO DISCONNECT AND ABANDON CABLE RUN BETWEEN POLES, ONCE NEW CABLE IS READY TO BE ENERGIZED.
- CONTRACTOR TO USE EXTREME CAUTION EXCAVATING IN AREAS OF EXISTING OR PROPOSED UNIT DUCT AND EXISTING FIBER OPTIC CABLE. CONTRACTOR SHALL PROTECT EXISTING CABLE DUCT AS NEEDED DURING EXCAVATION, TRENCHING, PLOWING, GUARDRAIL INSTALLATION, FOUNDATION INSTALLATION, AND PAVING ACTIVITIES.



MATCH LINE STA. 937+00
SEE L-6



| REVISIONS | |
|-----------|------|
| NAME | DATE |
| | |
| | |
| | |
| | |
| | |
| | |
| | |
| | |
| | |
| | |

L-7

ILLINOIS DEPARTMENT OF TRANSPORTATION
F.A.I. I-55
143rd STREET TO WEBER ROAD
PROPOSED LIGHTING PLAN

SCALE: 1" = 50'
DATE: 02-23-07

DRAWN BY: VG
CHECKED BY: PV

SINGH 300 W. ADAMS ST.
CHICAGO, IL 60606
STARCH & ASSOCIATES, INC. TEL: (312) 629-9240
CONSULTING ENGINEERS FAX: (312) 629-8449

PB PARSONS BRINCKERHOFF

FINAL