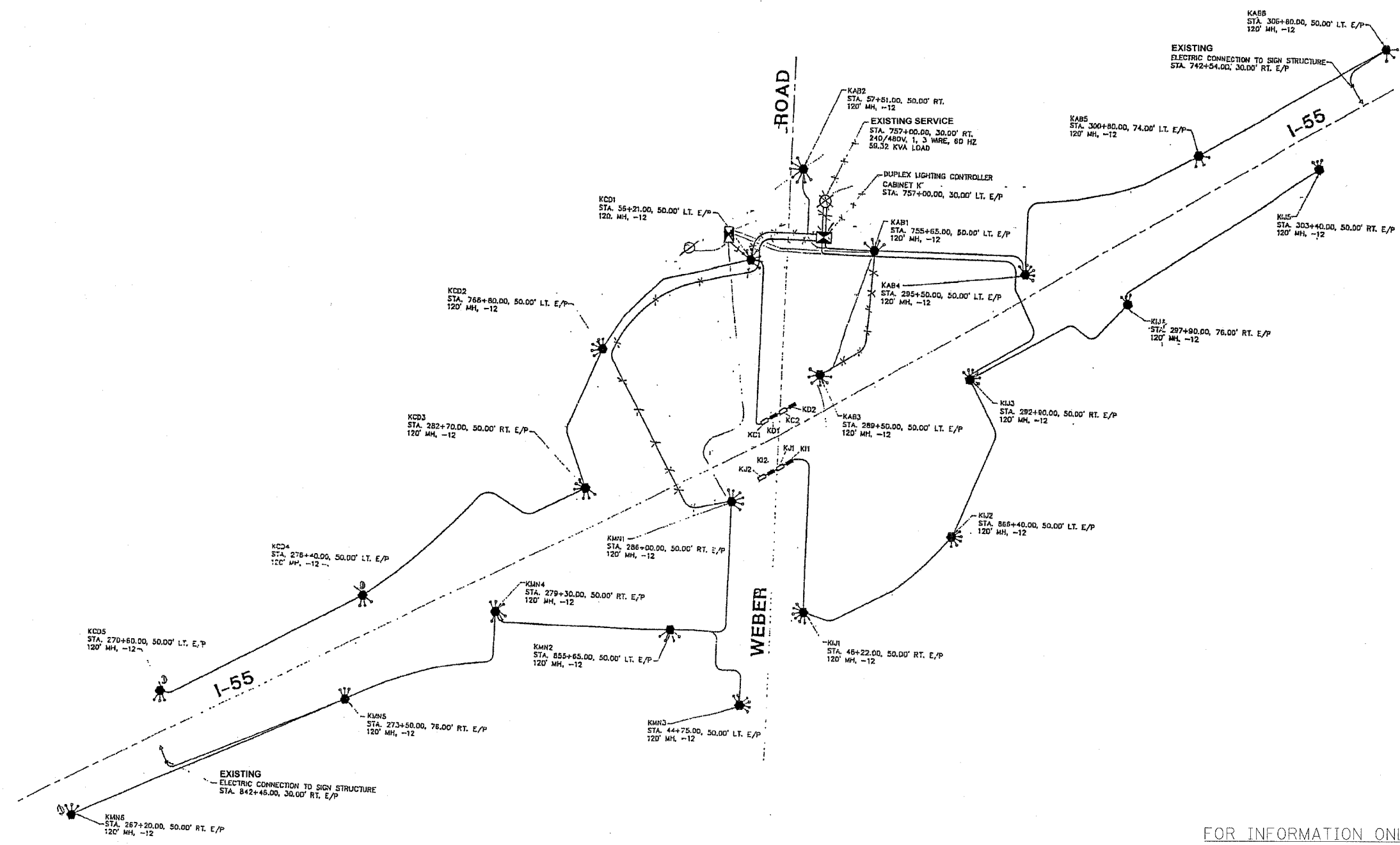
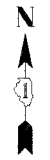


F.A.I. R/L	SECTION	COUNTY	TOTAL SHEETS	SHEET NO.
55	99 (1&2) WRS-3	WILL	305	177
STA.		TO STA.		
FED. ROAD DIST. NO. 1		ILLINOIS FED. AID PROJECT		
L-10 OF 13				



FOR INFORMATION ONLY

L-10

REVISIONS	
NAME	DATE

ILLINOIS DEPARTMENT OF TRANSPORTATION
 F.A.I. I-55
 143rd STREET TO WEBER ROAD
 LIGHTING CONTROLLER "K"
 EXISTING WIRING DIAGRAM

SCALE: NONE
 DATE: 02-23-07

DRAWN BY: VG
 CHECKED BY: PV

SINGH
 500 W. ADAMS ST.
 CHICAGO, IL 60606
 TEL: (312) 629-0240
 SINGH & ASSOCIATES, INC.
 CONSULTING ENGINEERS

PB PARSONS BRINCKERHOFF
 100

FINAL